



Full wwPDB X-ray Structure Validation Report ⓘ

Feb 13, 2017 – 12:03 pm GMT

PDB ID : 4Z8S
Title : Structural studies on a non-toxic homologue of type II RIPs from Momordica charantia (bitter gourd)-Native-1
Authors : Chandran, T.; Sharma, A.; Vijayan, M.
Deposited on : 2015-04-09
Resolution : 2.36 Å(reported)

This is a Full wwPDB X-ray Structure Validation Report for a publicly released PDB entry.

We welcome your comments at validation@mail.wwpdb.org

A user guide is available at

<http://wwpdb.org/validation/2016/XrayValidationReportHelp>

with specific help available everywhere you see the ⓘ symbol.

The following versions of software and data (see [references ⓘ](#)) were used in the production of this report:

MolProbity : 4.02b-467
Mogul : 1.7.2 (RC1), CSD as538be (2017)
Xtriage (Phenix) : 1.9-1692
EDS : trunk28620
Percentile statistics : 20161228.v01 (using entries in the PDB archive December 28th 2016)
Refmac : 5.8.0135
CCP4 : 6.5.0
Ideal geometry (proteins) : Engh & Huber (2001)
Ideal geometry (DNA, RNA) : Parkinson et al. (1996)
Validation Pipeline (wwPDB-VP) : recalc28949

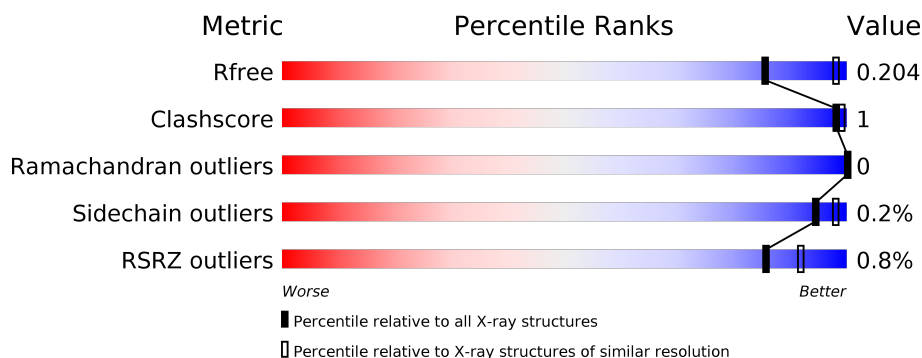
1 Overall quality at a glance

The following experimental techniques were used to determine the structure:

X-RAY DIFFRACTION

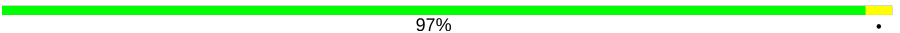
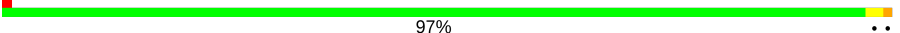
The reported resolution of this entry is 2.36 Å.

Percentile scores (ranging between 0-100) for global validation metrics of the entry are shown in the following graphic. The table shows the number of entries on which the scores are based.



Metric	Whole archive (#Entries)	Similar resolution (#Entries, resolution range(Å))
R_{free}	100719	1522 (2.38-2.34)
Clashscore	112137	1626 (2.38-2.34)
Ramachandran outliers	110173	1605 (2.38-2.34)
Sidechain outliers	110143	1606 (2.38-2.34)
RSRZ outliers	101464	1528 (2.38-2.34)

The table below summarises the geometric issues observed across the polymeric chains and their fit to the electron density. The red, orange, yellow and green segments on the lower bar indicate the fraction of residues that contain outliers for ≥ 3 , 2, 1 and 0 types of geometric quality criteria. A grey segment represents the fraction of residues that are not modelled. The numeric value for each fraction is indicated below the corresponding segment, with a dot representing fractions $\leq 5\%$. The upper red bar (where present) indicates the fraction of residues that have poor fit to the electron density. The numeric value is given above the bar.

Mol	Chain	Length	Quality of chain
1	A	247	 97%
2	B	261	 97%

2 Entry composition [i](#)

There are 8 unique types of molecules in this entry. The entry contains 4463 atoms, of which 0 are hydrogens and 0 are deuteriums.

In the tables below, the ZeroOcc column contains the number of atoms modelled with zero occupancy, the AltConf column contains the number of residues with at least one atom in alternate conformation and the Trace column contains the number of residues modelled with at most 2 atoms.

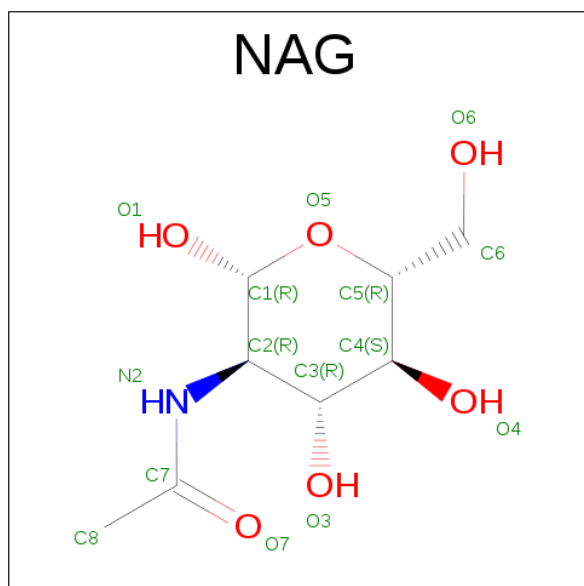
- Molecule 1 is a protein called rRNA N-glycosidase.

Mol	Chain	Residues	Atoms					ZeroOcc	AltConf	Trace
1	A	247	Total	C	N	O	S	0	0	0
			1943	1247	308	377	11			

- Molecule 2 is a protein called rRNA N-glycosidase.

Mol	Chain	Residues	Atoms					ZeroOcc	AltConf	Trace
2	B	261	Total	C	N	O	S	0	0	0
			2001	1235	356	396	14			

- Molecule 3 is N-ACETYL-D-GLUCOSAMINE (three-letter code: NAG) (formula: $C_8H_{15}NO_6$).



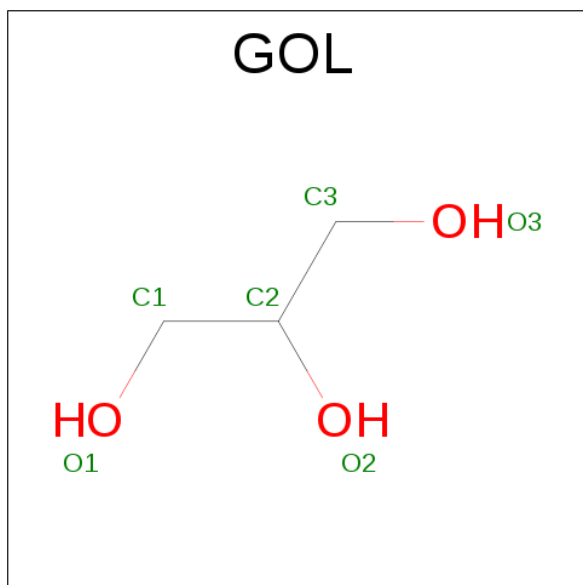
Mol	Chain	Residues	Atoms				ZeroOcc	AltConf
3	A	1	Total	C	N	O	0	0
			14	8	1	5		
3	B	1	Total	C	N	O	0	0
			14	8	1	5		

Continued on next page...

Continued from previous page...

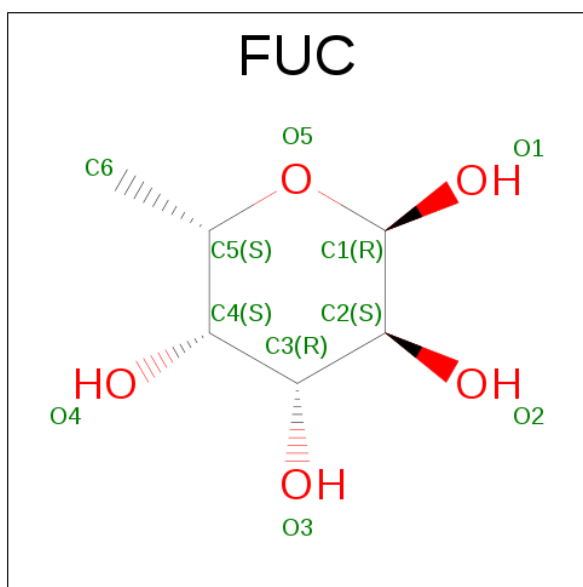
Mol	Chain	Residues	Atoms				ZeroOcc	AltConf
3	B	1	Total	C	N	O	0	0
			14	8	1	5		
3	B	1	Total	C	N	O	0	0
			14	8	1	5		
3	B	1	Total	C	N	O	0	0
			14	8	1	5		

- Molecule 4 is GLYCEROL (three-letter code: GOL) (formula: $C_3H_8O_3$).



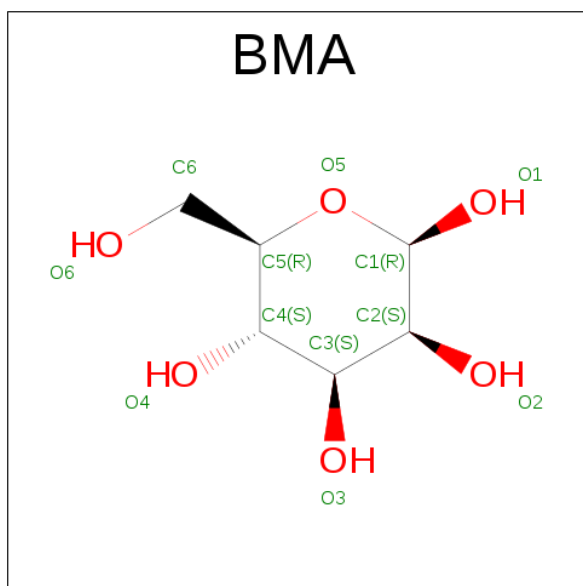
Mol	Chain	Residues	Atoms			ZeroOcc	AltConf
4	B	1	Total	C	O	0	0
			6	3	3		
4	B	1	Total	C	O	0	0
			6	3	3		

- Molecule 5 is ALPHA-L-FUCOSE (three-letter code: FUC) (formula: $C_6H_{12}O_5$).



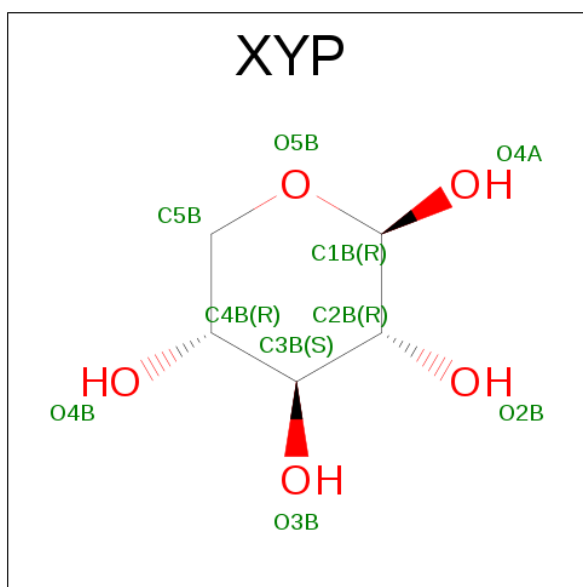
Mol	Chain	Residues	Atoms			ZeroOcc	AltConf
5	B	1	Total	C	O	0	0
			10	6	4		

- Molecule 6 is BETA-D-MANNOSE (three-letter code: BMA) (formula: $C_6H_{12}O_6$).



Mol	Chain	Residues	Atoms			ZeroOcc	AltConf
6	B	1	Total	C	O	0	0
			11	6	5		

- Molecule 7 is BETA-D-XYLOPYRANOSE (three-letter code: XYP) (formula: $C_5H_{10}O_5$).



Mol	Chain	Residues	Atoms			ZeroOcc	AltConf
7	B	1	Total	C	O	0	0
			9	5	4		

- Molecule 8 is water.

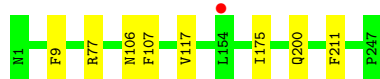
Mol	Chain	Residues	Atoms		ZeroOcc	AltConf
8	A	163	Total	O	0	0
			163	163		
8	B	244	Total	O	0	0
			244	244		

3 Residue-property plots [i](#)

These plots are drawn for all protein, RNA and DNA chains in the entry. The first graphic for a chain summarises the proportions of the various outlier classes displayed in the second graphic. The second graphic shows the sequence view annotated by issues in geometry and electron density. Residues are color-coded according to the number of geometric quality criteria for which they contain at least one outlier: green = 0, yellow = 1, orange = 2 and red = 3 or more. A red dot above a residue indicates a poor fit to the electron density ($RSRZ > 2$). Stretches of 2 or more consecutive residues without any outlier are shown as a green connector. Residues present in the sample, but not in the model, are shown in grey.

- Molecule 1: rRNA N-glycosidase

Chain A:  97% .



- Molecule 2: rRNA N-glycosidase

Chain B:  97% ..



4 Data and refinement statistics

Property	Value	Source
Space group	P 21 21 2	Depositor
Cell constants a, b, c, α , β , γ	144.97Å 134.21Å 44.67Å 90.00° 90.00° 90.00°	Depositor
Resolution (Å)	29.47 – 2.36 29.47 – 2.36	Depositor EDS
% Data completeness (in resolution range)	99.9 (29.47-2.36) 100.0 (29.47-2.36)	Depositor EDS
R_{merge}	0.11	Depositor
R_{sym}	(Not available)	Depositor
$\langle I/\sigma(I) \rangle$ ¹	3.18 (at 2.36Å)	Xtriage
Refinement program	REFMAC 5.8.0107	Depositor
R, R_{free}	0.165 , 0.201 0.173 , 0.204	Depositor DCC
R_{free} test set	1861 reflections (5.33%)	DCC
Wilson B-factor (Å ²)	27.0	Xtriage
Anisotropy	0.602	Xtriage
Bulk solvent k_{sol} (e/Å ³), B_{sol} (Å ²)	0.32 , 46.0	EDS
L-test for twinning ²	$\langle L \rangle = 0.47$, $\langle L^2 \rangle = 0.30$	Xtriage
Estimated twinning fraction	No twinning to report.	Xtriage
F_o, F_c correlation	0.95	EDS
Total number of atoms	4463	wwPDB-VP
Average B, all atoms (Å ²)	29.0	wwPDB-VP

Xtriage's analysis on translational NCS is as follows: *The largest off-origin peak in the Patterson function is 5.02% of the height of the origin peak. No significant pseudotranslation is detected.*

¹Intensities estimated from amplitudes.

²Theoretical values of $\langle |L| \rangle$, $\langle L^2 \rangle$ for acentric reflections are 0.5, 0.333 respectively for untwinned datasets, and 0.375, 0.2 for perfectly twinned datasets.

5 Model quality

5.1 Standard geometry

Bond lengths and bond angles in the following residue types are not validated in this section: XYP, GOL, BMA, NAG, FUC

The Z score for a bond length (or angle) is the number of standard deviations the observed value is removed from the expected value. A bond length (or angle) with $|Z| > 5$ is considered an outlier worth inspection. RMSZ is the root-mean-square of all Z scores of the bond lengths (or angles).

Mol	Chain	Bond lengths		Bond angles	
		RMSZ	$\# Z > 5$	RMSZ	$\# Z > 5$
1	A	0.62	1/1987 (0.1%)	0.77	3/2700 (0.1%)
2	B	0.74	1/2035 (0.0%)	0.93	6/2770 (0.2%)
All	All	0.68	2/4022 (0.0%)	0.86	9/5470 (0.2%)

Chiral center outliers are detected by calculating the chiral volume of a chiral center and verifying if the center is modelled as a planar moiety or with the opposite hand. A planarity outlier is detected by checking planarity of atoms in a peptide group, atoms in a mainchain group or atoms of a sidechain that are expected to be planar.

Mol	Chain	#Chirality outliers	#Planarity outliers
2	B	0	1

All (2) bond length outliers are listed below:

Mol	Chain	Res	Type	Atoms	Z	Observed(Å)	Ideal(Å)
2	B	213	ARG	C-N	9.30	1.55	1.34
1	A	106	ASN	C-N	-5.08	1.22	1.34

All (9) bond angle outliers are listed below:

Mol	Chain	Res	Type	Atoms	Z	Observed(°)	Ideal(°)
2	B	214	TRP	O-C-N	-16.91	95.64	122.70
2	B	213	ARG	C-N-CA	-11.89	91.97	121.70
2	B	214	TRP	CA-C-N	10.87	141.12	117.20
2	B	213	ARG	O-C-N	9.39	137.72	122.70
1	A	106	ASN	C-N-CA	7.81	141.22	121.70
2	B	213	ARG	CA-C-N	-7.22	101.32	117.20
1	A	106	ASN	O-C-N	-6.88	111.69	122.70
1	A	77	ARG	NE-CZ-NH1	5.62	123.11	120.30
2	B	112	ARG	NE-CZ-NH2	-5.51	117.54	120.30

There are no chirality outliers.

All (1) planarity outliers are listed below:

Mol	Chain	Res	Type	Group
2	B	214	TRP	Mainchain

5.2 Too-close contacts ⓘ

In the following table, the Non-H and H(model) columns list the number of non-hydrogen atoms and hydrogen atoms in the chain respectively. The H(added) column lists the number of hydrogen atoms added and optimized by MolProbity. The Clashes column lists the number of clashes within the asymmetric unit, whereas Symm-Clashes lists symmetry related clashes.

Mol	Chain	Non-H	H(model)	H(added)	Clashes	Symm-Clashes
1	A	1943	0	1882	3	0
2	B	2001	0	1923	3	0
3	A	14	0	13	0	0
3	B	56	0	48	0	0
4	B	12	0	16	0	0
5	B	10	0	10	0	0
6	B	11	0	9	0	0
7	B	9	0	8	0	0
8	A	163	0	0	1	0
8	B	244	0	0	0	0
All	All	4463	0	3909	6	0

The all-atom clashscore is defined as the number of clashes found per 1000 atoms (including hydrogen atoms). The all-atom clashscore for this structure is 1.

All (6) close contacts within the same asymmetric unit are listed below, sorted by their clash magnitude.

Atom-1	Atom-2	Interatomic distance (Å)	Clash overlap (Å)
1:A:107:PHE:HB3	1:A:117:VAL:HG21	1.59	0.84
1:A:9:PHE:HE1	1:A:175:ILE:HD11	1.66	0.61
2:B:15:GLY:HA3	2:B:128:TRP:CE3	2.51	0.46
2:B:229:ALA:HB3	2:B:245:LEU:HG	2.02	0.41
8:A:420:HOH:O	2:B:258:THR:HA	2.20	0.41
1:A:200:GLN:HB3	1:A:211:PHE:CG	2.55	0.41

There are no symmetry-related clashes.

5.3 Torsion angles

5.3.1 Protein backbone

In the following table, the Percentiles column shows the percent Ramachandran outliers of the chain as a percentile score with respect to all X-ray entries followed by that with respect to entries of similar resolution.

The Analysed column shows the number of residues for which the backbone conformation was analysed, and the total number of residues.

Mol	Chain	Analysed	Favoured	Allowed	Outliers	Percentiles	
1	A	245/247 (99%)	232 (95%)	13 (5%)	0	100	100
2	B	259/261 (99%)	255 (98%)	4 (2%)	0	100	100
All	All	504/508 (99%)	487 (97%)	17 (3%)	0	100	100

There are no Ramachandran outliers to report.

5.3.2 Protein sidechains

In the following table, the Percentiles column shows the percent sidechain outliers of the chain as a percentile score with respect to all X-ray entries followed by that with respect to entries of similar resolution.

The Analysed column shows the number of residues for which the sidechain conformation was analysed, and the total number of residues.

Mol	Chain	Analysed	Rotameric	Outliers	Percentiles	
1	A	216/217 (100%)	216 (100%)	0	100	100
2	B	222/229 (97%)	221 (100%)	1 (0%)	91	95
All	All	438/446 (98%)	437 (100%)	1 (0%)	94	98

All (1) residues with a non-rotameric sidechain are listed below:

Mol	Chain	Res	Type
2	B	213	ARG

Some sidechains can be flipped to improve hydrogen bonding and reduce clashes. There are no such sidechains identified.

5.3.3 RNA

There are no RNA molecules in this entry.

5.4 Non-standard residues in protein, DNA, RNA chains [i](#)

There are no non-standard protein/DNA/RNA residues in this entry.

5.5 Carbohydrates [i](#)

There are no carbohydrates in this entry.

5.6 Ligand geometry [i](#)

10 ligands are modelled in this entry.

In the following table, the Counts columns list the number of bonds (or angles) for which Mogul statistics could be retrieved, the number of bonds (or angles) that are observed in the model and the number of bonds (or angles) that are defined in the chemical component dictionary. The Link column lists molecule types, if any, to which the group is linked. The Z score for a bond length (or angle) is the number of standard deviations the observed value is removed from the expected value. A bond length (or angle) with $|Z| > 2$ is considered an outlier worth inspection. RMSZ is the root-mean-square of all Z scores of the bond lengths (or angles).

Mol	Type	Chain	Res	Link	Bond lengths			Bond angles		
					Counts	RMSZ	$\# Z > 2$	Counts	RMSZ	$\# Z > 2$
3	NAG	A	301	1	14,14,15	0.85	0	15,19,21	1.57	3 (20%)
4	GOL	B	301	-	5,5,5	0.57	0	5,5,5	0.44	0
4	GOL	B	302	-	5,5,5	0.71	0	5,5,5	1.80	2 (40%)
3	NAG	B	303	3,2	14,14,15	1.30	1 (7%)	15,19,21	1.74	3 (20%)
3	NAG	B	304	3	14,14,15	1.06	1 (7%)	15,19,21	1.56	2 (13%)
3	NAG	B	305	3,2,5	14,14,15	1.08	1 (7%)	15,19,21	2.42	6 (40%)
5	FUC	B	306	3	9,10,11	1.08	1 (11%)	13,14,16	1.63	4 (30%)
3	NAG	B	307	3,6	14,14,15	1.35	2 (14%)	15,19,21	3.16	7 (46%)
6	BMA	B	308	3,7	11,11,12	1.29	1 (9%)	13,15,17	2.10	6 (46%)
7	XYP	B	309	6	9,9,10	0.22	0	10,12,14	0.53	0

In the following table, the Chirals column lists the number of chiral outliers, the number of chiral centers analysed, the number of these observed in the model and the number defined in the chemical component dictionary. Similar counts are reported in the Torsion and Rings columns. '-' means no outliers of that kind were identified.

Mol	Type	Chain	Res	Link	Chirals	Torsions	Rings
3	NAG	A	301	1	-	0/6/23/26	0/1/1/1
4	GOL	B	301	-	-	0/4/4/4	0/0/0/0
4	GOL	B	302	-	-	0/4/4/4	0/0/0/0

Continued on next page...

Continued from previous page...

Mol	Type	Chain	Res	Link	Chirals	Torsions	Rings
3	NAG	B	303	3,2	-	0/6/23/26	0/1/1/1
3	NAG	B	304	3	-	0/6/23/26	0/1/1/1
3	NAG	B	305	3,2,5	-	0/6/23/26	0/1/1/1
5	FUC	B	306	3	-	0/0/17/20	0/1/1/1
3	NAG	B	307	3,6	-	0/6/23/26	0/1/1/1
6	BMA	B	308	3,7	-	0/2/19/22	0/1/1/1
7	XYP	B	309	6	-	0/0/14/17	0/1/1/1

All (7) bond length outliers are listed below:

Mol	Chain	Res	Type	Atoms	Z	Observed(Å)	Ideal(Å)
6	B	308	BMA	O5-C1	-2.81	1.39	1.43
3	B	303	NAG	O7-C7	-2.58	1.17	1.23
3	B	307	NAG	O7-C7	-2.39	1.17	1.23
3	B	305	NAG	O5-C1	-2.27	1.40	1.43
5	B	306	FUC	O5-C1	-2.04	1.40	1.43
3	B	304	NAG	O5-C1	-2.02	1.40	1.43
3	B	307	NAG	O4-C4	3.15	1.50	1.43

All (33) bond angle outliers are listed below:

Mol	Chain	Res	Type	Atoms	Z	Observed(°)	Ideal(°)
3	B	307	NAG	C3-C4-C5	-6.18	99.32	110.22
3	B	305	NAG	C4-C3-C2	-4.61	104.26	111.02
3	B	307	NAG	O3-C3-C2	-4.23	100.31	109.39
3	A	301	NAG	O5-C1-C2	-4.10	105.77	111.47
3	B	303	NAG	O5-C1-C2	-3.70	106.32	111.47
6	B	308	BMA	C3-C4-C5	-3.47	104.10	110.22
6	B	308	BMA	C1-C2-C3	-3.45	105.28	109.65
3	B	305	NAG	C1-C2-N2	-3.11	105.18	110.49
3	B	304	NAG	O5-C1-C2	-3.09	107.17	111.47
5	B	306	FUC	C3-C4-C5	-3.05	104.89	109.68
4	B	302	GOL	O3-C3-C2	-2.96	95.18	110.07
5	B	306	FUC	O2-C2-C3	-2.84	104.59	110.17
3	B	304	NAG	O3-C3-C4	-2.74	104.40	110.36
3	B	307	NAG	O6-C6-C5	-2.65	102.42	111.34
3	A	301	NAG	C3-C4-C5	-2.36	106.05	110.22
6	B	308	BMA	O6-C6-C5	-2.19	103.96	111.34
4	B	302	GOL	O2-C2-C3	-2.07	99.06	108.84
5	B	306	FUC	C1-O5-C5	2.23	117.33	112.39
6	B	308	BMA	O2-C2-C1	2.39	114.04	109.18
3	B	305	NAG	O5-C1-C2	2.44	114.87	111.47

Continued on next page...

Continued from previous page...

Mol	Chain	Res	Type	Atoms	Z	Observed(°)	Ideal(°)
3	A	301	NAG	C1-O5-C5	2.49	115.60	112.17
6	B	308	BMA	O3-C3-C4	2.53	115.87	110.36
3	B	303	NAG	C4-C3-C2	2.63	114.87	111.02
6	B	308	BMA	C1-O5-C5	2.71	115.90	112.17
5	B	306	FUC	O5-C1-C2	2.73	115.07	110.79
3	B	307	NAG	O4-C4-C5	2.94	116.68	109.28
3	B	303	NAG	C1-O5-C5	3.44	116.91	112.17
3	B	305	NAG	O3-C3-C4	3.60	118.20	110.36
3	B	305	NAG	O4-C4-C3	3.63	118.25	110.36
3	B	307	NAG	O4-C4-C3	4.15	119.38	110.36
3	B	305	NAG	C1-O5-C5	4.39	118.21	112.17
3	B	307	NAG	C4-C3-C2	4.39	117.45	111.02
3	B	307	NAG	C1-O5-C5	5.66	119.97	112.17

There are no chirality outliers.

There are no torsion outliers.

There are no ring outliers.

No monomer is involved in short contacts.

5.7 Other polymers [i](#)

There are no such residues in this entry.

5.8 Polymer linkage issues [i](#)

There are no chain breaks in this entry.

6 Fit of model and data [i](#)

6.1 Protein, DNA and RNA chains [i](#)

In the following table, the column labelled ‘#RSRZ > 2’ contains the number (and percentage) of RSRZ outliers, followed by percent RSRZ outliers for the chain as percentile scores relative to all X-ray entries and entries of similar resolution. The OWAB column contains the minimum, median, 95th percentile and maximum values of the occupancy-weighted average B-factor per residue. The column labelled ‘Q < 0.9’ lists the number of (and percentage) of residues with an average occupancy less than 0.9.

Mol	Chain	Analysed	<RSRZ>	#RSRZ>2	OWAB(Å ²)	Q<0.9
1	A	247/247 (100%)	-0.37	1 (0%) 92 96	16, 26, 43, 56	0
2	B	261/261 (100%)	-0.29	3 (1%) 80 88	18, 27, 50, 82	0
All	All	508/508 (100%)	-0.33	4 (0%) 86 92	16, 27, 46, 82	0

All (4) RSRZ outliers are listed below:

Mol	Chain	Res	Type	RSRZ
2	B	1	ASN	4.0
2	B	252	GLY	3.5
2	B	250	ASP	2.8
1	A	154	LEU	2.0

6.2 Non-standard residues in protein, DNA, RNA chains [i](#)

There are no non-standard protein/DNA/RNA residues in this entry.

6.3 Carbohydrates [i](#)

There are no carbohydrates in this entry.

6.4 Ligands [i](#)

In the following table, the Atoms column lists the number of modelled atoms in the group and the number defined in the chemical component dictionary. LLDF column lists the quality of electron density of the group with respect to its neighbouring residues in protein, DNA or RNA chains. The B-factors column lists the minimum, median, 95th percentile and maximum values of B factors of atoms in the group. The column labelled ‘Q < 0.9’ lists the number of atoms with occupancy less than 0.9.

Mol	Type	Chain	Res	Atoms	RSCC	RSR	LLDF	B-factors(\AA^2)	Q<0.9
3	NAG	A	301	14/15	0.88	0.22	1.98	63,72,75,81	0
4	GOL	B	301	6/6	0.84	0.17	1.93	42,52,56,56	0
3	NAG	B	305	14/15	0.93	0.11	0.42	25,30,40,42	0
3	NAG	B	303	14/15	0.95	0.11	-0.79	31,34,39,45	0
7	XYP	B	309	9/10	0.80	0.25	-	49,59,63,63	0
3	NAG	B	304	14/15	0.91	0.22	-	57,67,76,77	0
5	FUC	B	306	10/11	0.93	0.17	-	30,33,37,37	0
6	BMA	B	308	11/12	0.91	0.21	-	50,53,58,59	0
4	GOL	B	302	6/6	0.89	0.19	-	57,60,61,61	0
3	NAG	B	307	14/15	0.92	0.14	-	27,36,40,42	0

6.5 Other polymers [i](#)

There are no such residues in this entry.