



# Full wwPDB X-ray Structure Validation Report ⓘ

Oct 2, 2017 – 09:26 AM EDT

PDB ID : 2ZGI  
Title : Crystal Structure of Putative 4-amino-4-deoxychorismate lyase  
Authors : Padmanabhan, B.; Bessho, Y.; Yokoyama, S.; RIKEN Structural Genomics/Proteomics Initiative (RSGI)  
Deposited on : unknown  
Resolution : 1.93 Å(reported)

This is a Full wwPDB X-ray Structure Validation Report for a publicly released PDB entry.

We welcome your comments at [validation@mail.wwpdb.org](mailto:validation@mail.wwpdb.org)

A user guide is available at

<http://wwpdb.org/validation/2016/XrayValidationReportHelp>

with specific help available everywhere you see the ⓘ symbol.

---

The following versions of software and data (see [references ⓘ](#)) were used in the production of this report:

MolProbity	:	4.02b-467
Mogul	:	1.7.2 (RC1), CSD as538be (2017)
Xtriage (Phenix)	:	1.9-1692
EDS	:	rb-20030345
Percentile statistics	:	20161228.v01 (using entries in the PDB archive December 28th 2016)
Refmac	:	5.8.0135
CCP4	:	6.5.0
Ideal geometry (proteins)	:	Engh & Huber (2001)
Ideal geometry (DNA, RNA)	:	Parkinson et al. (1996)
Validation Pipeline (wwPDB-VP)	:	rb-20030345

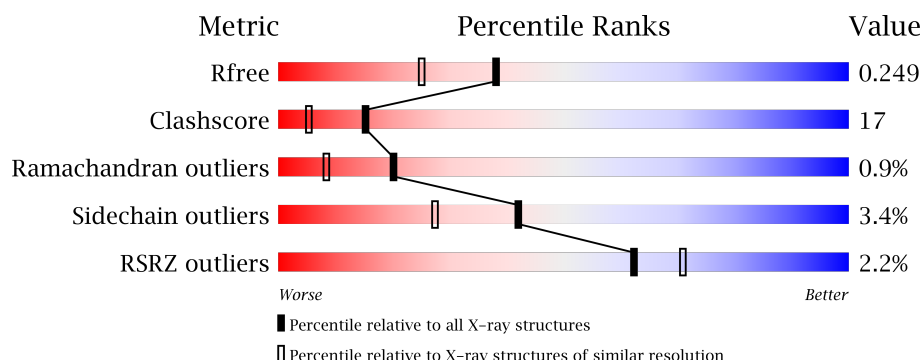
# 1 Overall quality at a glance

The following experimental techniques were used to determine the structure:

*X-RAY DIFFRACTION*

The reported resolution of this entry is 1.93 Å.

Percentile scores (ranging between 0-100) for global validation metrics of the entry are shown in the following graphic. The table shows the number of entries on which the scores are based.



Metric	Whole archive (#Entries)	Similar resolution (#Entries, resolution range(Å))
$R_{free}$	100719	3233 (1.96-1.92)
Clashscore	112137	3430 (1.96-1.92)
Ramachandran outliers	110173	3395 (1.96-1.92)
Sidechain outliers	110143	3395 (1.96-1.92)
RSRZ outliers	101464	3250 (1.96-1.92)

The table below summarises the geometric issues observed across the polymeric chains and their fit to the electron density. The red, orange, yellow and green segments on the lower bar indicate the fraction of residues that contain outliers for  $\geq 3$ , 2, 1 and 0 types of geometric quality criteria. A grey segment represents the fraction of residues that are not modelled. The numeric value for each fraction is indicated below the corresponding segment, with a dot representing fractions  $\leq 5\%$ . The upper red bar (where present) indicates the fraction of residues that have poor fit to the electron density. The numeric value is given above the bar.

Mol	Chain	Length	Quality of chain
1	A	246	<div> <div>0.5%</div> <div> <div></div> <div>77%</div> <div>21%</div> <div>0.5%</div> </div> </div>
1	B	246	<div> <div>4%</div> <div> <div></div> <div>76%</div> <div>22%</div> <div>0.5%</div> </div> </div>
1	C	246	<div> <div>0.5%</div> <div> <div></div> <div>80%</div> <div>16%</div> <div>0.5%</div> </div> </div>
1	D	246	<div> <div>2%</div> <div> <div></div> <div>73%</div> <div>26%</div> <div>0.5%</div> </div> </div>

The following table lists non-polymeric compounds, carbohydrate monomers and non-standard residues in protein, DNA, RNA chains that are outliers for geometric or electron-density-fit crite-

ria:

Mol	Type	Chain	Res	Chirality	Geometry	Clashes	Electron density
5	PEG	B	249	-	-	-	X
5	PEG	D	249	-	-	-	X

## 2 Entry composition [i](#)

There are 6 unique types of molecules in this entry. The entry contains 9172 atoms, of which 0 are hydrogens and 0 are deuteriums.

In the tables below, the ZeroOcc column contains the number of atoms modelled with zero occupancy, the AltConf column contains the number of residues with at least one atom in alternate conformation and the Trace column contains the number of residues modelled with at most 2 atoms.

- Molecule 1 is a protein called Putative 4-amino-4-deoxychorismate lyase.

Mol	Chain	Residues	Atoms						ZeroOcc	AltConf	Trace
1	A	244	Total	C	N	O	S	Se	0	4	0
			1938	1251	353	331	2	1			
1	B	245	Total	C	N	O	S	Se	0	2	0
			1928	1244	351	330	2	1			
1	C	245	Total	C	N	O	S	Se	0	2	0
			1931	1246	351	331	2	1			
1	D	246	Total	C	N	O	S	Se	0	2	0
			1936	1249	352	332	2	1			

- Molecule 2 is SULFATE ION (three-letter code: SO<sub>4</sub>) (formula: O<sub>4</sub>S).



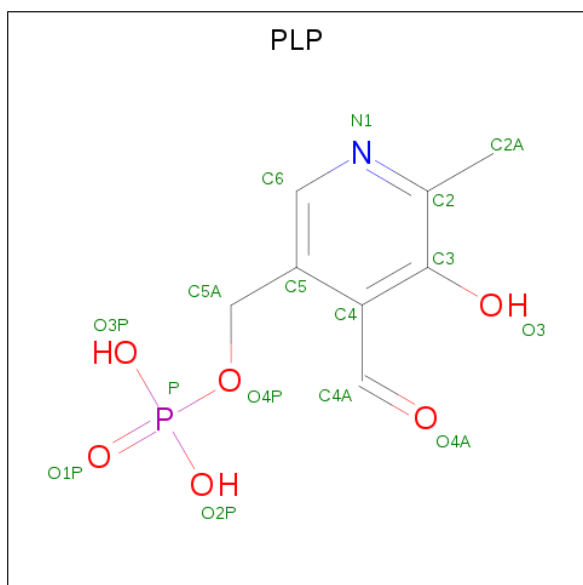
Mol	Chain	Residues	Atoms			ZeroOcc	AltConf
2	A	1	Total	O	S	0	0
			5	4	1		
2	B	1	Total	O	S	0	0
			5	4	1		

*Continued on next page...*

Continued from previous page...

Mol	Chain	Residues	Atoms			ZeroOcc	AltConf
2	C	1	Total	O	S	0	0
			5	4	1		
2	D	1	Total	O	S	0	0
			5	4	1		

- Molecule 3 is PYRIDOXAL-5'-PHOSPHATE (three-letter code: PLP) (formula:  $C_8H_{10}NO_6P$ ).



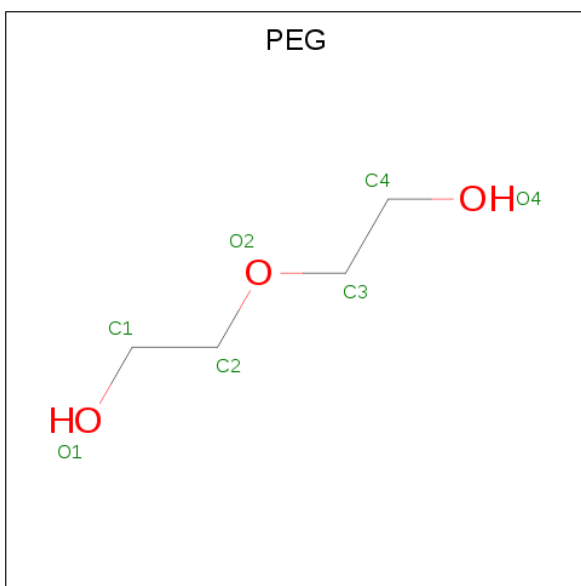
Mol	Chain	Residues	Atoms					ZeroOcc	AltConf
3	A	1	Total	C	N	O	P	0	0
			15	8	1	5	1		
3	B	1	Total	C	N	O	P	0	0
			15	8	1	5	1		
3	C	1	Total	C	N	O	P	0	0
			15	8	1	5	1		
3	D	1	Total	C	N	O	P	0	0
			15	8	1	5	1		

- Molecule 4 is TRIETHYLENE GLYCOL (three-letter code: PGE) (formula:  $C_6H_{14}O_4$ ).



Mol	Chain	Residues	Atoms			ZeroOcc	AltConf
4	A	1	Total	C	O	0	0
			10	6	4		
4	C	1	Total	C	O	0	0
			10	6	4		

- Molecule 5 is DI(HYDROXYETHYL)ETHER (three-letter code: PEG) (formula:  $C_4H_{10}O_3$ ).



Mol	Chain	Residues	Atoms			ZeroOcc	AltConf
5	B	1	Total	C	O	0	0
			7	4	3		
5	B	1	Total	C	O	0	0
			7	4	3		

*Continued on next page...*

*Continued from previous page...*

Mol	Chain	Residues	Atoms			ZeroOcc	AltConf
5	D	1	Total	C	O	0	0
			7	4	3		

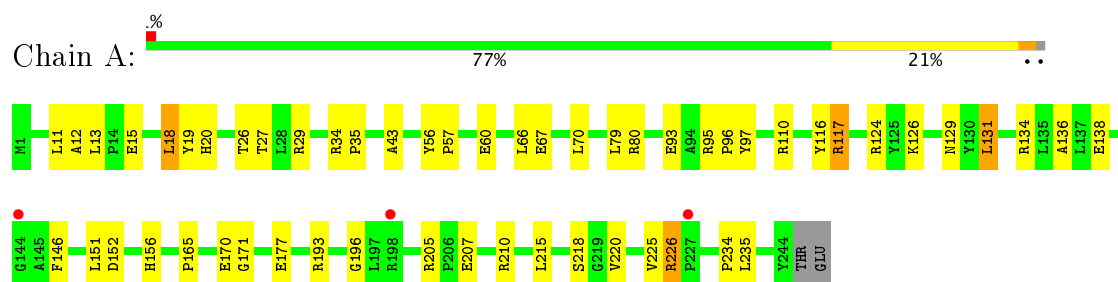
- Molecule 6 is water.

Mol	Chain	Residues	Atoms		ZeroOcc	AltConf
6	A	333	Total	O	0	0
			333	333		
6	B	339	Total	O	0	0
			339	339		
6	C	334	Total	O	0	0
			334	334		
6	D	312	Total	O	0	0
			312	312		

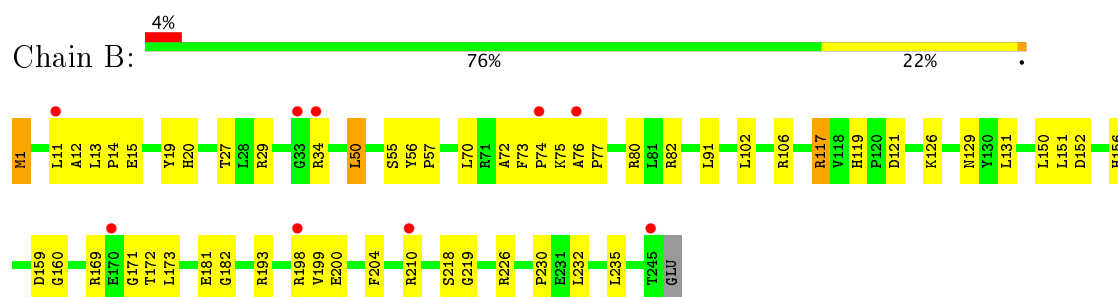
### 3 Residue-property plots [i](#)

These plots are drawn for all protein, RNA and DNA chains in the entry. The first graphic for a chain summarises the proportions of the various outlier classes displayed in the second graphic. The second graphic shows the sequence view annotated by issues in geometry and electron density. Residues are color-coded according to the number of geometric quality criteria for which they contain at least one outlier: green = 0, yellow = 1, orange = 2 and red = 3 or more. A red dot above a residue indicates a poor fit to the electron density ( $RSRZ > 2$ ). Stretches of 2 or more consecutive residues without any outlier are shown as a green connector. Residues present in the sample, but not in the model, are shown in grey.

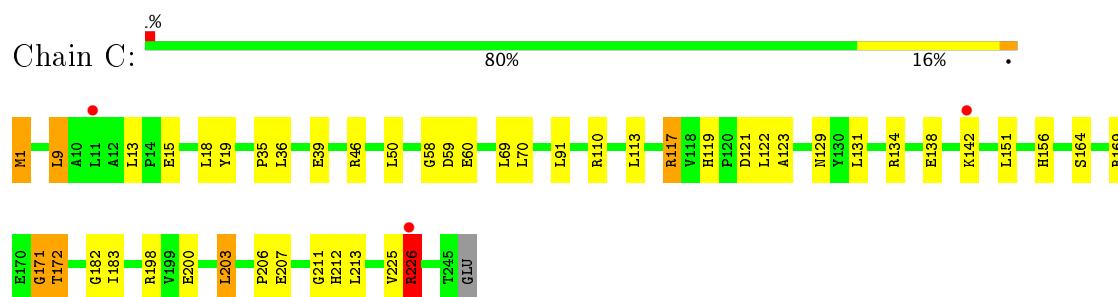
- Molecule 1: Putative 4-amino-4-deoxychorismate lyase



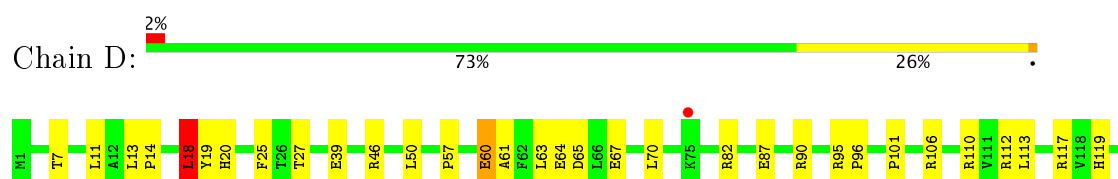
- Molecule 1: Putative 4-amino-4-deoxychorismate lyase



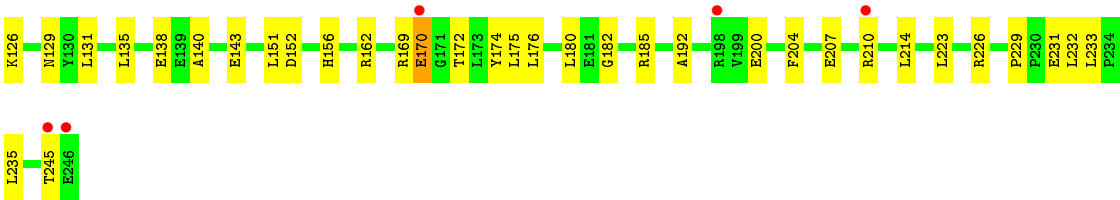
- Molecule 1: Putative 4-amino-4-deoxychorismate lyase



- Molecule 1: Putative 4-amino-4-deoxychorismate lyase







## 4 Data and refinement statistics

Property	Value	Source
Space group	P 21 21 21	Depositor
Cell constants a, b, c, $\alpha$ , $\beta$ , $\gamma$	65.61Å 133.59Å 141.98Å 90.00° 90.00° 90.00°	Depositor
Resolution (Å)	20.00 – 1.93 33.40 – 1.93	Depositor EDS
% Data completeness (in resolution range)	96.7 (20.00-1.93) 96.7 (33.40-1.93)	Depositor EDS
$R_{merge}$	0.06	Depositor
$R_{sym}$	(Not available)	Depositor
$\langle I/\sigma(I) \rangle$ <sup>1</sup>	1.33 (at 1.92Å)	Xtriage
Refinement program	REFMAC 5.4.0061	Depositor
R, $R_{free}$	0.193 , 0.249 0.193 , 0.249	Depositor DCC
$R_{free}$ test set	4572 reflections (5.26%)	DCC
Wilson B-factor (Å <sup>2</sup> )	31.0	Xtriage
Anisotropy	0.245	Xtriage
Bulk solvent $k_{sol}$ (e/Å <sup>3</sup> ), $B_{sol}$ (Å <sup>2</sup> )	0.34 , 56.8	EDS
L-test for twinning <sup>2</sup>	$\langle  L  \rangle = 0.45$ , $\langle L^2 \rangle = 0.28$	Xtriage
Estimated twinning fraction	No twinning to report.	Xtriage
$F_o, F_c$ correlation	0.95	EDS
Total number of atoms	9172	wwPDB-VP
Average B, all atoms (Å <sup>2</sup> )	33.0	wwPDB-VP

Xtriage's analysis on translational NCS is as follows: *The largest off-origin peak in the Patterson function is 3.76% of the height of the origin peak. No significant pseudotranslation is detected.*

<sup>1</sup>Intensities estimated from amplitudes.

<sup>2</sup>Theoretical values of  $\langle |L| \rangle$ ,  $\langle L^2 \rangle$  for acentric reflections are 0.5, 0.333 respectively for untwinned datasets, and 0.375, 0.2 for perfectly twinned datasets.

## 5 Model quality

### 5.1 Standard geometry

Bond lengths and bond angles in the following residue types are not validated in this section: PEG, PGE, SO4, PLP

The Z score for a bond length (or angle) is the number of standard deviations the observed value is removed from the expected value. A bond length (or angle) with  $|Z| > 5$  is considered an outlier worth inspection. RMSZ is the root-mean-square of all Z scores of the bond lengths (or angles).

Mol	Chain	Bond lengths		Bond angles	
		RMSZ	$\# Z  > 5$	RMSZ	$\# Z  > 5$
1	A	0.62	0/1997	0.74	0/2707
1	B	0.65	0/1981	0.76	0/2686
1	C	0.70	0/1984	0.79	2/2690 (0.1%)
1	D	0.62	0/1989	0.75	2/2698 (0.1%)
All	All	0.65	0/7951	0.76	4/10781 (0.0%)

There are no bond length outliers.

All (4) bond angle outliers are listed below:

Mol	Chain	Res	Type	Atoms	Z	Observed(°)	Ideal(°)
1	C	9	LEU	CA-CB-CG	6.60	130.49	115.30
1	D	18	LEU	CA-CB-CG	6.40	130.02	115.30
1	C	226	ARG	NE-CZ-NH1	5.23	122.91	120.30
1	D	223	LEU	CA-CB-CG	5.10	127.04	115.30

There are no chirality outliers.

There are no planarity outliers.

### 5.2 Too-close contacts

In the following table, the Non-H and H(model) columns list the number of non-hydrogen atoms and hydrogen atoms in the chain respectively. The H(added) column lists the number of hydrogen atoms added and optimized by MolProbity. The Clashes column lists the number of clashes within the asymmetric unit, whereas Symm-Clashes lists symmetry related clashes.

Mol	Chain	Non-H	H(model)	H(added)	Clashes	Symm-Clashes
1	A	1938	0	2006	59	0
1	B	1928	0	1985	71	0
1	C	1931	0	1986	74	0

*Continued on next page...*

*Continued from previous page...*

Mol	Chain	Non-H	H(model)	H(added)	Clashes	Symm-Clashes
1	D	1936	0	1996	76	0
2	A	5	0	0	0	0
2	B	5	0	0	0	0
2	C	5	0	0	0	0
2	D	5	0	0	0	0
3	A	15	0	7	2	0
3	B	15	0	6	2	0
3	C	15	0	6	0	0
3	D	15	0	6	2	0
4	A	10	0	14	2	0
4	C	10	0	14	3	0
5	B	14	0	20	4	0
5	D	7	0	10	1	0
6	A	333	0	0	40	0
6	B	339	0	0	42	1
6	C	334	0	0	34	0
6	D	312	0	0	37	1
All	All	9172	0	8056	263	1

The all-atom clashscore is defined as the number of clashes found per 1000 atoms (including hydrogen atoms). The all-atom clashscore for this structure is 17.

All (263) close contacts within the same asymmetric unit are listed below, sorted by their clash magnitude.

Atom-1	Atom-2	Interatomic distance (Å)	Clash overlap (Å)
1:A:126:LYS:HZ3	3:A:248:PLP:C4A	1.26	1.43
1:C:212:HIS:HA	1:C:226:ARG:NH2	1.26	1.43
1:D:126:LYS:HZ3	3:D:248:PLP:C4A	1.39	1.28
1:A:136:ALA:HB2	6:A:502:HOH:O	1.29	1.26
1:C:182:GLY:HA3	6:C:483:HOH:O	1.25	1.25
1:D:135:LEU:HA	6:D:560:HOH:O	1.33	1.25
1:A:79:LEU:HD23	6:A:532:HOH:O	1.31	1.23
1:B:27:THR:HB	6:B:841:HOH:O	1.28	1.21
1:B:204:PHE:HD1	6:B:801:HOH:O	1.22	1.17
5:B:250:PEG:H11	1:D:210:ARG:HG3	1.31	1.10
1:B:50:LEU:HD23	6:B:813:HOH:O	1.52	1.09
1:A:205:ARG:HD2	6:A:497:HOH:O	1.53	1.07
1:A:96:PRO:HA	6:A:532:HOH:O	1.51	1.07
1:D:138:GLU:HB2	6:D:560:HOH:O	1.54	1.06
1:C:50:LEU:HG	6:C:510:HOH:O	1.56	1.06
1:B:102:LEU:HA	6:B:824:HOH:O	1.58	1.04

*Continued on next page...*

*Continued from previous page...*

Atom-1	Atom-2	Interatomic distance (Å)	Clash overlap (Å)
1:C:212:HIS:CA	1:C:226:ARG:NH2	2.21	1.03
1:D:126:LYS:HZ1	3:D:248:PLP:C4A	1.53	1.01
1:C:119:HIS:HB3	6:C:550:HOH:O	1.58	1.01
1:D:112:ARG:HG2	6:D:587:HOH:O	1.60	1.00
1:A:126:LYS:HZ1	3:A:248:PLP:C4A	1.67	1.00
1:B:151:LEU:HB2	6:B:820:HOH:O	1.60	0.99
1:B:117:ARG:HG3	6:B:820:HOH:O	1.60	0.99
1:B:171:GLY:O	6:B:806:HOH:O	1.81	0.99
1:C:142:LYS:HE3	6:C:517:HOH:O	1.63	0.98
1:A:177:GLU:HG2	6:A:551:HOH:O	1.61	0.98
1:C:138:GLU:HB3	6:C:501:HOH:O	1.63	0.96
1:A:80:ARG:HB2	6:A:538:HOH:O	1.66	0.95
1:A:67:GLU:O	6:A:539:HOH:O	1.85	0.94
1:B:50:LEU:CD2	6:B:813:HOH:O	2.11	0.94
1:C:212:HIS:HA	1:C:226:ARG:HH22	1.17	0.94
1:C:164:SER:OG	6:C:483:HOH:O	1.86	0.93
1:C:212:HIS:HA	1:C:226:ARG:HH21	1.22	0.93
1:B:126:LYS:HZ2	3:B:248:PLP:C4A	1.76	0.91
1:D:169:ARG:HG2	1:D:170:GLU:HG2	1.54	0.90
1:B:219:GLY:HA3	6:B:848:HOH:O	1.69	0.90
1:B:20:HIS:ND1	1:C:134[A]:ARG:HD2	1.86	0.90
1:C:46:ARG:NH1	6:C:549:HOH:O	2.04	0.89
1:B:1:MSE:HA	6:B:857:HOH:O	1.71	0.89
1:A:116:TYR:HB2	6:A:502:HOH:O	1.74	0.88
1:D:7:THR:HB	6:D:544:HOH:O	1.75	0.85
1:D:25:PHE:O	6:D:553:HOH:O	1.93	0.84
1:A:124[B]:ARG:HG2	6:A:383:HOH:O	1.76	0.84
1:A:220:VAL:HG23	6:A:557:HOH:O	1.79	0.83
1:D:204:PHE:HD2	6:D:601:HOH:O	1.61	0.83
1:A:97:TYR:HD1	6:A:538:HOH:O	1.63	0.82
1:D:82:ARG:NH1	6:D:596:HOH:O	1.82	0.82
1:C:226:ARG:HG3	6:C:292:HOH:O	1.80	0.81
1:D:126:LYS:HG2	6:D:553:HOH:O	1.80	0.79
1:B:181:GLU:HG3	6:B:811:HOH:O	1.83	0.78
1:B:150:LEU:HD13	6:B:858:HOH:O	1.84	0.77
1:B:119:HIS:CE1	1:C:117:ARG:O	2.37	0.77
1:B:117:ARG:CD	6:B:820:HOH:O	2.31	0.76
1:A:134[A]:ARG:HD2	1:D:20:HIS:ND1	2.01	0.76
1:B:131:LEU:H	1:C:129:ASN:HD21	1.30	0.76
5:B:249:PEG:C4	6:B:832:HOH:O	2.32	0.76
1:C:212:HIS:CA	1:C:226:ARG:HH22	1.91	0.76

*Continued on next page...*

*Continued from previous page...*

Atom-1	Atom-2	Interatomic distance (Å)	Clash overlap (Å)
1:B:119:HIS:HE1	1:C:117:ARG:O	1.68	0.75
1:B:159:ASP:HB3	6:B:858:HOH:O	1.84	0.75
1:C:119:HIS:O	6:C:550:HOH:O	2.03	0.75
1:C:36:LEU:HB2	6:C:499:HOH:O	1.87	0.74
1:B:198:ARG:HB3	6:B:790:HOH:O	1.85	0.74
1:C:138:GLU:O	1:C:142:LYS:HG2	1.87	0.73
1:D:180:LEU:HD13	6:D:545:HOH:O	1.88	0.73
1:C:138:GLU:CB	6:C:501:HOH:O	2.31	0.73
1:B:119:HIS:CD2	1:B:121:ASP:H	2.06	0.72
1:C:18:LEU:HB2	6:C:478:HOH:O	1.90	0.71
1:A:20:HIS:HD2	6:A:534:HOH:O	1.74	0.71
5:B:250:PEG:H11	1:D:210:ARG:CG	2.17	0.71
1:A:193:ARG:NH1	6:A:465:HOH:O	2.24	0.70
1:C:119:HIS:CD2	1:C:121:ASP:H	2.08	0.70
1:B:129:ASN:HD21	1:C:131:LEU:H	1.39	0.70
1:C:142:LYS:HE2	6:C:501:HOH:O	1.92	0.69
1:A:110:ARG:HD3	6:A:521:HOH:O	1.93	0.69
1:C:119:HIS:HD2	1:C:121:ASP:H	1.41	0.68
1:A:226:ARG:HA	6:A:486:HOH:O	1.92	0.68
1:A:193:ARG:NE	6:A:496:HOH:O	2.12	0.68
1:A:220:VAL:CG2	6:A:557:HOH:O	2.39	0.68
1:B:182:GLY:N	6:B:551:HOH:O	2.25	0.67
1:C:213:LEU:H	1:C:226:ARG:HH22	1.43	0.67
1:D:170:GLU:O	6:D:569:HOH:O	2.11	0.67
1:A:129:ASN:HD21	1:D:131:LEU:H	1.42	0.67
1:B:117:ARG:CG	6:B:820:HOH:O	2.25	0.67
1:D:126:LYS:CG	6:D:553:HOH:O	2.40	0.67
1:D:143:GLU:HG3	6:D:532:HOH:O	1.94	0.66
1:B:75:LYS:HB2	6:B:787:HOH:O	1.95	0.66
1:A:116:TYR:CB	6:A:502:HOH:O	2.38	0.66
1:C:225:VAL:O	1:C:226:ARG:HG2	1.96	0.66
1:A:131:LEU:H	1:D:129:ASN:HD21	1.41	0.65
1:A:80:ARG:CB	6:A:538:HOH:O	2.33	0.65
1:B:106:ARG:NH1	6:B:845:HOH:O	2.27	0.65
1:A:215:LEU:O	6:A:557:HOH:O	2.15	0.65
1:D:65:ASP:OD2	1:D:90[A]:ARG:NH1	2.30	0.64
1:C:213:LEU:N	1:C:226:ARG:HH22	1.96	0.64
1:C:171:GLY:N	6:C:513:HOH:O	2.31	0.64
1:D:152:ASP:OD2	1:D:156:HIS:HD2	1.80	0.64
1:A:170:GLU:O	6:A:545:HOH:O	2.16	0.64
1:D:82:ARG:CZ	6:D:596:HOH:O	2.35	0.63

*Continued on next page...*

*Continued from previous page...*

Atom-1	Atom-2	Interatomic distance (Å)	Clash overlap (Å)
1:C:172:THR:HG21	6:C:575:HOH:O	1.98	0.62
1:B:119:HIS:HD2	1:B:121:ASP:H	1.45	0.62
1:B:15:GLU:HG3	1:B:19:TYR:HD2	1.64	0.62
1:D:82:ARG:NH2	6:D:596:HOH:O	2.32	0.62
1:D:95:ARG:HB2	1:D:96:PRO:HD2	1.81	0.61
1:D:13:LEU:HB2	1:D:18:LEU:HD11	1.82	0.61
1:D:64:GLU:HB2	6:D:565:HOH:O	1.98	0.61
1:A:152:ASP:OD2	1:A:156:HIS:HD2	1.83	0.61
1:D:126:LYS:HB3	6:D:553:HOH:O	2.01	0.61
1:A:27[B]:THR:CG2	6:A:311:HOH:O	2.48	0.61
1:C:119:HIS:CB	6:C:550:HOH:O	2.30	0.61
1:B:117:ARG:HD2	6:B:820:HOH:O	1.96	0.60
1:B:1:MSE:CE	1:C:69:LEU:HD23	2.32	0.60
1:A:134[B]:ARG:HD2	1:D:20:HIS:ND1	2.17	0.60
4:A:249:PGE:H6	6:A:453:HOH:O	2.00	0.60
1:B:193:ARG:NH1	6:B:663:HOH:O	2.34	0.60
1:D:14:PRO:O	1:D:18:LEU:HD22	2.01	0.60
1:C:123:ALA:N	6:C:550:HOH:O	2.35	0.59
1:C:119:HIS:C	6:C:550:HOH:O	2.41	0.59
1:A:15:GLU:HG3	1:A:19:TYR:CD2	2.37	0.59
1:B:169:ARG:HD3	1:B:210:ARG:O	2.03	0.58
1:A:97:TYR:CD1	6:A:538:HOH:O	2.46	0.58
1:B:204:PHE:CD1	6:B:801:HOH:O	2.10	0.57
6:B:640:HOH:O	1:D:207:GLU:HG2	2.04	0.57
1:D:229:PRO:HD2	1:D:232:LEU:HD12	1.86	0.57
1:C:122:LEU:N	6:C:550:HOH:O	2.33	0.57
1:B:152:ASP:OD2	1:B:156:HIS:HD2	1.87	0.56
1:B:27:THR:CG2	6:B:665:HOH:O	2.53	0.56
1:B:27:THR:HG22	6:B:665:HOH:O	2.05	0.56
1:B:72:ALA:HB3	1:C:1:MSE:HE1	1.86	0.56
1:C:13:LEU:HB3	6:C:478:HOH:O	2.04	0.56
1:C:134[A]:ARG:NH2	6:C:295:HOH:O	2.39	0.56
1:D:18:LEU:O	6:D:570:HOH:O	2.18	0.56
1:C:35:PRO:HD2	6:C:537:HOH:O	2.04	0.55
1:C:110:ARG:HH12	1:C:226:ARG:CB	2.19	0.55
1:D:126:LYS:CB	6:D:553:HOH:O	2.55	0.55
1:A:134[A]:ARG:NH2	1:A:138:GLU:OE2	2.39	0.55
1:A:79:LEU:CD2	6:A:532:HOH:O	2.13	0.55
1:B:169:ARG:NH1	6:B:871:HOH:O	2.41	0.54
1:B:55:SER:HB3	6:B:785:HOH:O	2.06	0.54
1:D:11:LEU:HD21	1:D:18:LEU:HD23	1.89	0.54

*Continued on next page...*

*Continued from previous page...*

Atom-1	Atom-2	Interatomic distance (Å)	Clash overlap (Å)
1:B:1:MSE:HE3	1:C:69:LEU:HD23	1.90	0.54
1:D:7:THR:CB	6:D:544:HOH:O	2.45	0.54
1:B:198:ARG:NH1	1:B:200:GLU:OE2	2.40	0.54
1:A:117:ARG:O	1:D:119:HIS:NE2	2.38	0.53
1:A:156:HIS:HE1	6:A:305:HOH:O	1.91	0.53
1:D:39:GLU:HB2	6:D:564:HOH:O	2.07	0.53
1:C:39:GLU:HG2	6:C:356:HOH:O	2.06	0.53
1:D:63:LEU:O	1:D:67:GLU:HG3	2.07	0.53
1:D:27:THR:HG22	1:D:82:ARG:HG3	1.90	0.53
1:B:117:ARG:O	1:C:119:HIS:CE1	2.61	0.53
1:B:29:ARG:NH1	1:B:218:SER:O	2.42	0.53
1:B:172:THR:OG1	6:B:790:HOH:O	2.19	0.53
1:D:60:GLU:CD	6:D:565:HOH:O	2.47	0.53
1:D:60:GLU:HB2	6:D:366:HOH:O	2.08	0.52
1:C:138:GLU:CG	6:C:501:HOH:O	2.56	0.52
1:C:212:HIS:HD2	6:C:343:HOH:O	1.92	0.52
1:B:102:LEU:HD12	6:B:824:HOH:O	2.08	0.52
1:B:80:ARG:NH2	6:B:665:HOH:O	2.42	0.52
1:D:64:GLU:CB	6:D:565:HOH:O	2.57	0.51
1:C:58:GLY:HA2	4:C:249:PGE:H52	1.92	0.51
1:D:65:ASP:CG	1:D:90[A]:ARG:HH12	2.15	0.51
1:D:245:THR:HG22	6:D:616:HOH:O	2.10	0.50
1:D:46:ARG:O	1:D:50:LEU:HG	2.12	0.50
1:D:25:PHE:CG	6:D:553:HOH:O	2.64	0.50
1:D:174:TYR:HA	1:D:200:GLU:O	2.12	0.49
1:C:59:ASP:H	4:C:249:PGE:C5	2.25	0.49
1:D:175:LEU:HD13	1:D:185:ARG:HG2	1.93	0.49
1:D:229:PRO:HB2	1:D:231:GLU:OE2	2.13	0.49
1:B:75:LYS:HG3	1:B:77:PRO:HD3	1.95	0.49
1:B:117:ARG:O	1:C:119:HIS:HE1	1.96	0.48
1:D:65:ASP:CG	1:D:90[A]:ARG:NH1	2.66	0.48
1:A:146:PHE:HZ	1:A:220:VAL:HG11	1.79	0.48
1:A:225:VAL:O	1:A:226:ARG:HB2	2.14	0.48
1:A:171:GLY:HA2	6:A:554:HOH:O	2.12	0.47
1:B:160:GLY:O	6:B:858:HOH:O	2.20	0.47
1:C:119:HIS:CA	6:C:550:HOH:O	2.61	0.47
1:C:60:GLU:H	4:C:249:PGE:H3	1.79	0.47
1:D:112:ARG:CG	6:D:587:HOH:O	2.36	0.47
1:D:140:ALA:HA	6:D:587:HOH:O	2.14	0.47
1:A:165:PRO:HD2	6:A:493:HOH:O	2.14	0.47
4:A:249:PGE:H42	4:A:249:PGE:H62	1.63	0.47

*Continued on next page...*



*Continued from previous page...*

Atom-1	Atom-2	Interatomic distance (Å)	Clash overlap (Å)
1:B:119:HIS:HD2	1:B:121:ASP:N	2.11	0.47
1:A:13:LEU:HB2	1:A:18:LEU:HD11	1.97	0.46
1:B:75:LYS:HG2	1:B:75:LYS:H	1.24	0.46
5:B:249:PEG:C3	6:B:832:HOH:O	2.62	0.46
1:B:76:ALA:HA	6:B:784:HOH:O	2.14	0.46
1:D:61:ALA:O	1:D:90[A]:ARG:NH1	2.48	0.46
1:B:34:ARG:NH2	6:B:815:HOH:O	2.48	0.46
1:A:12:ALA:HB3	6:A:251:HOH:O	2.16	0.46
6:A:331:HOH:O	1:C:207:GLU:HG2	2.15	0.46
1:C:198:ARG:NH1	6:C:339:HOH:O	2.48	0.46
1:D:182:GLY:N	6:D:416:HOH:O	2.48	0.46
1:D:101:PRO:HG3	5:D:249:PEG:H21	1.97	0.46
1:A:26:THR:HB	6:A:295:HOH:O	2.15	0.46
1:A:151:LEU:HA	1:A:156:HIS:O	2.16	0.46
1:D:214:LEU:HD11	1:D:232:LEU:HD13	1.98	0.46
1:C:119:HIS:HD2	1:C:121:ASP:N	2.09	0.45
1:A:20:HIS:CD2	6:A:534:HOH:O	2.57	0.45
1:C:134[A]:ARG:HG2	6:C:345:HOH:O	2.16	0.45
6:A:314:HOH:O	1:C:203:LEU:HD21	2.16	0.45
1:B:27:THR:HG22	1:B:82[A]:ARG:HG3	1.99	0.45
1:B:198:ARG:NE	6:B:790:HOH:O	2.48	0.45
1:A:170:GLU:HB3	1:A:171:GLY:H	1.65	0.45
1:D:180:LEU:HD22	6:D:545:HOH:O	2.15	0.45
1:B:198:ARG:CB	6:B:790:HOH:O	2.53	0.45
1:B:230:PRO:HD2	6:B:649:HOH:O	2.16	0.45
1:A:93:GLU:OE1	1:D:19:TYR:OH	2.21	0.45
1:D:152:ASP:OD2	1:D:156:HIS:CD2	2.66	0.45
1:A:138:GLU:HG3	6:A:402:HOH:O	2.15	0.44
1:C:211:GLY:O	1:C:226:ARG:NH2	2.50	0.44
1:B:1:MSE:HE2	1:C:69:LEU:HD23	1.98	0.44
1:A:196:GLY:HA2	6:A:550:HOH:O	2.17	0.44
1:A:234:PRO:HD2	6:A:400:HOH:O	2.16	0.44
1:A:93:GLU:OE2	1:A:95:ARG:NH2	2.48	0.44
1:C:169:ARG:O	1:C:171:GLY:N	2.49	0.44
1:B:232:LEU:HD22	1:B:235:LEU:HD12	2.00	0.44
1:A:34:ARG:HD3	6:A:517:HOH:O	2.17	0.44
1:A:56:TYR:CD1	1:A:57:PRO:HD2	2.53	0.44
1:B:126:LYS:CE	3:B:248:PLP:C4A	2.85	0.44
1:C:122:LEU:CA	6:C:550:HOH:O	2.66	0.44
1:D:64:GLU:CG	6:D:565:HOH:O	2.64	0.44
1:D:176:LEU:HA	6:D:601:HOH:O	2.17	0.44

*Continued on next page...*

*Continued from previous page...*

Atom-1	Atom-2	Interatomic distance (Å)	Clash overlap (Å)
1:B:198:ARG:NH2	6:B:823:HOH:O	2.51	0.44
1:C:169:ARG:HG3	6:C:582:HOH:O	2.17	0.43
1:D:113:LEU:HD11	1:D:151:LEU:HD21	2.00	0.43
1:D:204:PHE:CD2	6:D:601:HOH:O	2.49	0.43
1:D:192:ALA:HB2	1:D:235:LEU:HD11	2.00	0.43
1:C:134[A]:ARG:NH1	6:C:461:HOH:O	2.17	0.43
1:D:87:GLU:HA	1:D:87:GLU:OE1	2.17	0.43
1:A:35:PRO:HG2	1:A:66:LEU:HD21	2.00	0.43
1:D:106:ARG:HD3	6:D:530:HOH:O	2.17	0.43
1:B:152:ASP:OD2	1:B:156:HIS:CD2	2.71	0.43
1:A:134[B]:ARG:HD2	1:D:20:HIS:CB	2.48	0.42
1:B:13:LEU:HA	1:B:14:PRO:HD3	1.91	0.42
1:C:1:MSE:HB3	1:C:1:MSE:HE3	1.83	0.42
1:C:200:GLU:OE2	6:C:575:HOH:O	2.21	0.42
1:C:212:HIS:C	1:C:226:ARG:HH22	2.23	0.42
1:D:229:PRO:CD	1:D:232:LEU:HD12	2.50	0.42
1:A:27[B]:THR:HG23	6:A:311:HOH:O	2.13	0.42
1:A:29:ARG:NH1	1:A:218:SER:O	2.51	0.42
1:D:50:LEU:HD22	6:D:536:HOH:O	2.20	0.42
1:A:43:ALA:HA	6:A:552:HOH:O	2.20	0.41
1:D:57:PRO:HB2	1:D:90[A]:ARG:HD3	2.02	0.41
1:B:50:LEU:HD21	6:B:855:HOH:O	2.20	0.41
1:C:15:GLU:HG3	1:C:19:TYR:CD2	2.55	0.41
1:A:134[B]:ARG:HD2	1:D:20:HIS:CG	2.55	0.41
1:B:1:MSE:HE2	1:C:69:LEU:HA	2.03	0.41
1:C:113:LEU:CD2	1:C:206:PRO:HB3	2.51	0.41
1:B:15:GLU:HB2	6:B:735:HOH:O	2.20	0.41
1:C:13:LEU:CB	6:C:478:HOH:O	2.66	0.41
1:C:151:LEU:HA	1:C:156:HIS:O	2.21	0.41
1:C:212:HIS:CA	1:C:226:ARG:HH21	2.11	0.41
1:D:180:LEU:HB2	6:D:545:HOH:O	2.19	0.41
1:B:13:LEU:HD13	1:C:18:LEU:HD11	2.02	0.41
1:C:183:ILE:HG23	6:C:392:HOH:O	2.21	0.41
6:A:267:HOH:O	1:C:203:LEU:HD22	2.21	0.41
1:A:207:GLU:CD	1:A:207:GLU:H	2.24	0.40
1:B:173:LEU:O	1:B:199:VAL:HA	2.21	0.40
1:B:74:PRO:HB2	6:B:794:HOH:O	2.21	0.40
1:D:207:GLU:O	1:D:210:ARG:CZ	2.68	0.40
1:B:73:PHE:HA	1:B:75:LYS:HE3	2.03	0.40
1:D:18:LEU:C	6:D:570:HOH:O	2.59	0.40
1:B:56:TYR:CD1	1:B:57:PRO:HD2	2.56	0.40

*Continued on next page...*

*Continued from previous page...*

Atom-1	Atom-2	Interatomic distance (Å)	Clash overlap (Å)
1:D:110:ARG:NH1	6:D:548:HOH:O	2.54	0.40

All (1) symmetry-related close contacts are listed below. The label for Atom-2 includes the symmetry operator and encoded unit-cell translations to be applied.

Atom-1	Atom-2	Interatomic distance (Å)	Clash overlap (Å)
6:B:773:HOH:O	6:D:396:HOH:O[1_655]	2.15	0.05

## 5.3 Torsion angles [i](#)

### 5.3.1 Protein backbone [i](#)

In the following table, the Percentiles column shows the percent Ramachandran outliers of the chain as a percentile score with respect to all X-ray entries followed by that with respect to entries of similar resolution.

The Analysed column shows the number of residues for which the backbone conformation was analysed, and the total number of residues.

Mol	Chain	Analysed	Favoured	Allowed	Outliers	Percentiles	
1	A	246/246 (100%)	238 (97%)	6 (2%)	2 (1%)	22	10
1	B	245/246 (100%)	240 (98%)	2 (1%)	3 (1%)	15	5
1	C	245/246 (100%)	240 (98%)	3 (1%)	2 (1%)	22	10
1	D	246/246 (100%)	243 (99%)	1 (0%)	2 (1%)	22	10
All	All	982/984 (100%)	961 (98%)	12 (1%)	9 (1%)	20	8

All (9) Ramachandran outliers are listed below:

Mol	Chain	Res	Type
1	A	11	LEU
1	B	11	LEU
1	B	12	ALA
1	D	170	GLU
1	C	171	GLY
1	C	226	ARG
1	D	226	ARG
1	A	226	ARG
1	B	226	ARG

### 5.3.2 Protein sidechains ⓘ

In the following table, the Percentiles column shows the percent sidechain outliers of the chain as a percentile score with respect to all X-ray entries followed by that with respect to entries of similar resolution.

The Analysed column shows the number of residues for which the sidechain conformation was analysed, and the total number of residues.

Mol	Chain	Analysed	Rotameric	Outliers	Percentiles	
1	A	197/194 (102%)	190 (96%)	7 (4%)	40	25
1	B	195/194 (100%)	190 (97%)	5 (3%)	51	39
1	C	195/194 (100%)	188 (96%)	7 (4%)	40	25
1	D	196/194 (101%)	188 (96%)	8 (4%)	35	20
All	All	783/776 (101%)	756 (97%)	27 (3%)	42	27

All (27) residues with a non-rotameric sidechain are listed below:

Mol	Chain	Res	Type
1	A	18	LEU
1	A	60	GLU
1	A	70	LEU
1	A	117	ARG
1	A	131	LEU
1	A	210	ARG
1	A	235	LEU
1	B	1	MSE
1	B	50	LEU
1	B	70	LEU
1	B	91	LEU
1	B	117	ARG
1	C	1	MSE
1	C	9	LEU
1	C	70	LEU
1	C	91	LEU
1	C	117	ARG
1	C	172	THR
1	C	203	LEU
1	D	18	LEU
1	D	60	GLU
1	D	70	LEU
1	D	117	ARG
1	D	162	ARG

*Continued on next page...*

*Continued from previous page...*

Mol	Chain	Res	Type
1	D	172[A]	THR
1	D	172[B]	THR
1	D	233	LEU

Some sidechains can be flipped to improve hydrogen bonding and reduce clashes. All (9) such sidechains are listed below:

Mol	Chain	Res	Type
1	A	129	ASN
1	A	156	HIS
1	B	119	HIS
1	B	129	ASN
1	B	156	HIS
1	C	119	HIS
1	C	129	ASN
1	D	129	ASN
1	D	156	HIS

### 5.3.3 RNA [i](#)

There are no RNA molecules in this entry.

## 5.4 Non-standard residues in protein, DNA, RNA chains [i](#)

There are no non-standard protein/DNA/RNA residues in this entry.

## 5.5 Carbohydrates [i](#)

There are no carbohydrates in this entry.

## 5.6 Ligand geometry [i](#)

13 ligands are modelled in this entry.

In the following table, the Counts columns list the number of bonds (or angles) for which Mogul statistics could be retrieved, the number of bonds (or angles) that are observed in the model and the number of bonds (or angles) that are defined in the Chemical Component Dictionary. The Link column lists molecule types, if any, to which the group is linked. The Z score for a bond length (or angle) is the number of standard deviations the observed value is removed from the expected value. A bond length (or angle) with  $|Z| > 2$  is considered an outlier worth inspection. RMSZ is the root-mean-square of all Z scores of the bond lengths (or angles).

Mol	Type	Chain	Res	Link	Bond lengths			Bond angles		
					Counts	RMSZ	# Z  > 2	Counts	RMSZ	# Z  > 2
2	SO4	A	247	-	4,4,4	0.33	0	6,6,6	0.44	0
3	PLP	A	248	1	15,15,16	0.96	1 (6%)	20,22,23	1.38	3 (15%)
4	PGE	A	249	-	9,9,9	0.53	0	8,8,8	0.38	0
2	SO4	B	247	-	4,4,4	0.15	0	6,6,6	0.54	0
3	PLP	B	248	1	15,15,16	1.39	1 (6%)	20,22,23	1.48	3 (15%)
5	PEG	B	249	-	6,6,6	0.54	0	5,5,5	0.21	0
5	PEG	B	250	-	6,6,6	0.40	0	5,5,5	0.60	0
2	SO4	C	247	-	4,4,4	0.19	0	6,6,6	0.53	0
3	PLP	C	248	1	15,15,16	0.97	1 (6%)	20,22,23	1.21	2 (10%)
4	PGE	C	249	-	9,9,9	0.45	0	8,8,8	0.35	0
2	SO4	D	247	-	4,4,4	0.17	0	6,6,6	0.37	0
3	PLP	D	248	1	15,15,16	0.57	0	20,22,23	1.45	3 (15%)
5	PEG	D	249	-	6,6,6	0.42	0	5,5,5	0.41	0

In the following table, the Chirals column lists the number of chiral outliers, the number of chiral centers analysed, the number of these observed in the model and the number defined in the Chemical Component Dictionary. Similar counts are reported in the Torsion and Rings columns. '-' means no outliers of that kind were identified.

Mol	Type	Chain	Res	Link	Chirals	Torsions	Rings
2	SO4	A	247	-	-	0/0/0/0	0/0/0/0
3	PLP	A	248	1	-	0/6/6/8	0/1/1/1
4	PGE	A	249	-	-	0/7/7/7	0/0/0/0
2	SO4	B	247	-	-	0/0/0/0	0/0/0/0
3	PLP	B	248	1	-	0/6/6/8	0/1/1/1
5	PEG	B	249	-	-	0/4/4/4	0/0/0/0
5	PEG	B	250	-	-	0/4/4/4	0/0/0/0
2	SO4	C	247	-	-	0/0/0/0	0/0/0/0
3	PLP	C	248	1	-	0/6/6/8	0/1/1/1
4	PGE	C	249	-	-	0/7/7/7	0/0/0/0
2	SO4	D	247	-	-	0/0/0/0	0/0/0/0
3	PLP	D	248	1	-	0/6/6/8	0/1/1/1
5	PEG	D	249	-	-	0/4/4/4	0/0/0/0

All (3) bond length outliers are listed below:

Mol	Chain	Res	Type	Atoms	Z	Observed(Å)	Ideal(Å)
3	B	248	PLP	C3-C2	-4.78	1.37	1.40
3	C	248	PLP	C3-C2	-2.63	1.38	1.40
3	A	248	PLP	C3-C2	-2.59	1.38	1.40

All (11) bond angle outliers are listed below:

Mol	Chain	Res	Type	Atoms	Z	Observed(°)	Ideal(°)
3	D	248	PLP	C4A-C4-C5	-3.12	117.71	120.86
3	D	248	PLP	O3P-P-O4P	-2.94	98.92	106.73
3	A	248	PLP	C5-C6-N1	-2.42	119.77	123.87
3	A	248	PLP	C4A-C4-C5	-2.27	118.57	120.86
3	B	248	PLP	C4A-C4-C5	-2.24	118.59	120.86
3	C	248	PLP	C5-C6-N1	-2.15	120.24	123.87
3	C	248	PLP	O4P-P-O1P	-2.05	100.73	106.47
3	B	248	PLP	O3-C3-C4	2.19	124.08	118.14
3	B	248	PLP	O4P-C5A-C5	2.42	114.18	109.32
3	A	248	PLP	C3-C4-C5	2.58	121.55	118.63
3	D	248	PLP	O4P-C5A-C5	2.83	115.01	109.32

There are no chirality outliers.

There are no torsion outliers.

There are no ring outliers.

8 monomers are involved in 16 short contacts:

Mol	Chain	Res	Type	Clashes	Symm-Clashes
3	A	248	PLP	2	0
4	A	249	PGE	2	0
3	B	248	PLP	2	0
5	B	249	PEG	2	0
5	B	250	PEG	2	0
4	C	249	PGE	3	0
3	D	248	PLP	2	0
5	D	249	PEG	1	0

## 5.7 Other polymers ⓘ

There are no such residues in this entry.

## 5.8 Polymer linkage issues ⓘ

There are no chain breaks in this entry.

## 6 Fit of model and data ⓘ

### 6.1 Protein, DNA and RNA chains ⓘ

In the following table, the column labelled ‘#RSRZ> 2’ contains the number (and percentage) of RSRZ outliers, followed by percent RSRZ outliers for the chain as percentile scores relative to all X-ray entries and entries of similar resolution. The OWAB column contains the minimum, median, 95<sup>th</sup> percentile and maximum values of the occupancy-weighted average B-factor per residue. The column labelled ‘Q< 0.9’ lists the number of (and percentage) of residues with an average occupancy less than 0.9.

Mol	Chain	Analysed	<RSRZ>	#RSRZ>2	OWAB(Å <sup>2</sup> )	Q<0.9
1	A	243/246 (98%)	0.11	3 (1%) 79 84	21, 31, 44, 50	0
1	B	244/246 (99%)	-0.01	9 (3%) 42 51	20, 30, 44, 50	1 (0%)
1	C	244/246 (99%)	-0.02	3 (1%) 79 84	19, 28, 40, 48	1 (0%)
1	D	245/246 (99%)	0.12	6 (2%) 59 68	21, 32, 50, 59	0
All	All	976/984 (99%)	0.05	21 (2%) 62 71	19, 30, 45, 59	2 (0%)

All (21) RSRZ outliers are listed below:

Mol	Chain	Res	Type	RSRZ
1	D	246	GLU	5.2
1	D	170	GLU	4.4
1	B	76	ALA	3.2
1	A	144	GLY	3.0
1	B	11	LEU	2.9
1	D	75	LYS	2.8
1	A	227	PRO	2.8
1	D	245	THR	2.7
1	B	245	THR	2.7
1	C	11	LEU	2.6
1	A	198	ARG	2.6
1	B	170	GLU	2.6
1	B	198	ARG	2.6
1	C	142	LYS	2.5
1	B	74	PRO	2.3
1	D	210	ARG	2.3
1	B	33	GLY	2.2
1	B	34	ARG	2.1
1	C	226	ARG	2.1
1	B	210	ARG	2.1
1	D	198	ARG	2.0



## 6.2 Non-standard residues in protein, DNA, RNA chains [i](#)

There are no non-standard protein/DNA/RNA residues in this entry.

## 6.3 Carbohydrates [i](#)

There are no carbohydrates in this entry.

## 6.4 Ligands [i](#)

In the following table, the Atoms column lists the number of modelled atoms in the group and the number defined in the chemical component dictionary. LLDF column lists the quality of electron density of the group with respect to its neighbouring residues in protein, DNA or RNA chains. The B-factors column lists the minimum, median, 95<sup>th</sup> percentile and maximum values of B factors of atoms in the group. The column labelled 'Q< 0.9' lists the number of atoms with occupancy less than 0.9.

Mol	Type	Chain	Res	Atoms	RSCC	RSR	LLDF	B-factors(Å <sup>2</sup> )	Q<0.9
5	PEG	D	249	7/7	0.68	0.26	5.32	52,55,56,57	0
5	PEG	B	249	7/7	0.65	0.20	2.12	67,68,69,69	0
4	PGE	C	249	10/10	0.81	0.21	1.61	52,53,55,56	0
4	PGE	A	249	10/10	0.62	0.18	1.33	45,51,57,57	0
2	SO4	D	247	5/5	0.97	0.18	1.17	48,48,50,50	0
5	PEG	B	250	7/7	0.68	0.21	0.76	57,57,58,59	0
3	PLP	A	248	15/16	0.98	0.16	0.39	24,27,28,28	0
3	PLP	C	248	15/16	0.98	0.16	0.25	21,23,25,26	0
3	PLP	B	248	15/16	0.98	0.11	0.20	21,24,28,30	0
3	PLP	D	248	15/16	0.98	0.11	-0.58	23,24,26,27	0
2	SO4	B	247	5/5	0.99	0.05	-1.42	33,33,36,37	0
2	SO4	C	247	5/5	0.98	0.07	-1.73	37,38,42,43	0
2	SO4	A	247	5/5	0.99	0.05	-1.95	31,32,33,33	0

## 6.5 Other polymers [i](#)

There are no such residues in this entry.