



# Full wwPDB X-ray Structure Validation Report ⓘ

Feb 14, 2017 – 11:03 am GMT

PDB ID : 3ZPO  
Title : Crystal structure of JmjC domain of human histone demethylase UTY with bound GSK J1  
Authors : Vollmar, M.; Gileadi, C.; Shrestha, L.; Goubin, S.; Johansson, C.; Krojer, T.; von Delft, F.; Arrowsmith, C.H.; Bountra, C.; Edwards, A.; Oppermann, U.  
Deposited on : 2013-02-28  
Resolution : 2.00 Å(reported)

This is a Full wwPDB X-ray Structure Validation Report for a publicly released PDB entry.

We welcome your comments at [validation@mail.wwpdb.org](mailto:validation@mail.wwpdb.org)

A user guide is available at

<http://wwpdb.org/validation/2016/XrayValidationReportHelp>

with specific help available everywhere you see the ⓘ symbol.

---

The following versions of software and data (see [references ⓘ](#)) were used in the production of this report:

MolProbity	:	4.02b-467
Mogul	:	1.7.2 (RC1), CSD as538be (2017)
Xtriage (Phenix)	:	1.9-1692
EDS	:	trunk28620
Percentile statistics	:	20161228.v01 (using entries in the PDB archive December 28th 2016)
Refmac	:	5.8.0135
CCP4	:	6.5.0
Ideal geometry (proteins)	:	Engh & Huber (2001)
Ideal geometry (DNA, RNA)	:	Parkinson et al. (1996)
Validation Pipeline (wwPDB-VP)	:	recalc28949

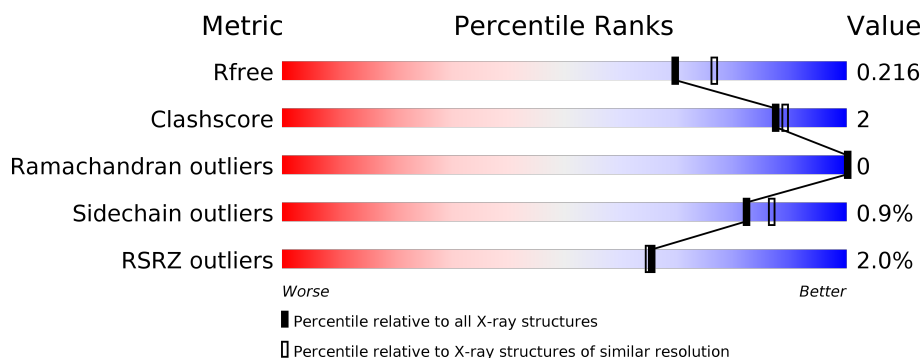
# 1 Overall quality at a glance

The following experimental techniques were used to determine the structure:

*X-RAY DIFFRACTION*

The reported resolution of this entry is 2.00 Å.

Percentile scores (ranging between 0-100) for global validation metrics of the entry are shown in the following graphic. The table shows the number of entries on which the scores are based.



Metric	Whole archive (#Entries)	Similar resolution (#Entries, resolution range(Å))
$R_{free}$	100719	6609 (2.00-2.00)
Clashscore	112137	7775 (2.00-2.00)
Ramachandran outliers	110173	7679 (2.00-2.00)
Sidechain outliers	110143	7678 (2.00-2.00)
RSRZ outliers	101464	6696 (2.00-2.00)

The table below summarises the geometric issues observed across the polymeric chains and their fit to the electron density. The red, orange, yellow and green segments on the lower bar indicate the fraction of residues that contain outliers for  $\geq 3$ , 2, 1 and 0 types of geometric quality criteria. A grey segment represents the fraction of residues that are not modelled. The numeric value for each fraction is indicated below the corresponding segment, with a dot representing fractions  $\leq 5\%$ . The upper red bar (where present) indicates the fraction of residues that have poor fit to the electron density. The numeric value is given above the bar.

Mol	Chain	Length	Quality of chain
1	A	478	<div> <div style="width: 100%; height: 10px; position: relative;"> <div style="position: absolute; top: -10px; left: 0; width: 100%;"></div> <div style="position: absolute; top: 0; left: 0; width: 100%; height: 10px;"> <div style="width: 1%; height: 10px; background-color: red;"></div> <div style="width: 88%; height: 10px; background-color: green;"></div> <div style="width: 5%; height: 10px; background-color: yellow;"></div> <div style="width: 8%; height: 10px; background-color: grey;"></div> </div> </div> <div> <div style="width: 100%; height: 10px; position: relative;"> <div style="position: absolute; top: -10px; left: 0; width: 100%;"></div> <div style="position: absolute; top: 0; left: 0; width: 100%; height: 10px;"> <div style="width: 3%; height: 10px; background-color: red;"></div> <div style="width: 86%; height: 10px; background-color: green;"></div> <div style="width: 5%; height: 10px; background-color: yellow;"></div> <div style="width: 8%; height: 10px; background-color: grey;"></div> </div> </div> </div> </div>
1	B	478	<div> <div style="width: 100%; height: 10px; position: relative;"> <div style="position: absolute; top: -10px; left: 0; width: 100%;"></div> <div style="position: absolute; top: 0; left: 0; width: 100%; height: 10px;"> <div style="width: 3%; height: 10px; background-color: red;"></div> <div style="width: 86%; height: 10px; background-color: green;"></div> <div style="width: 5%; height: 10px; background-color: yellow;"></div> <div style="width: 8%; height: 10px; background-color: grey;"></div> </div> </div> <div> <div style="width: 100%; height: 10px; position: relative;"> <div style="position: absolute; top: -10px; left: 0; width: 100%;"></div> <div style="position: absolute; top: 0; left: 0; width: 100%; height: 10px;"> <div style="width: 3%; height: 10px; background-color: red;"></div> <div style="width: 86%; height: 10px; background-color: green;"></div> <div style="width: 5%; height: 10px; background-color: yellow;"></div> <div style="width: 8%; height: 10px; background-color: grey;"></div> </div> </div> </div> </div>

The following table lists non-polymeric compounds, carbohydrate monomers and non-standard residues in protein, DNA, RNA chains that are outliers for geometric or electron-density-fit criteria:

Mol	Type	Chain	Res	Chirality	Geometry	Clashes	Electron density
5	EDO	A	2346	-	-	-	X
5	EDO	A	2349	-	-	-	X
5	EDO	A	2352	-	-	-	X
5	EDO	A	2353	-	-	-	X
5	EDO	B	2347	-	-	-	X
5	EDO	B	2351	-	-	-	X
5	EDO	B	2352	-	-	-	X

## 2 Entry composition

There are 6 unique types of molecules in this entry. The entry contains 7805 atoms, of which 0 are hydrogens and 0 are deuteriums.

In the tables below, the ZeroOcc column contains the number of atoms modelled with zero occupancy, the AltConf column contains the number of residues with at least one atom in alternate conformation and the Trace column contains the number of residues modelled with at most 2 atoms.

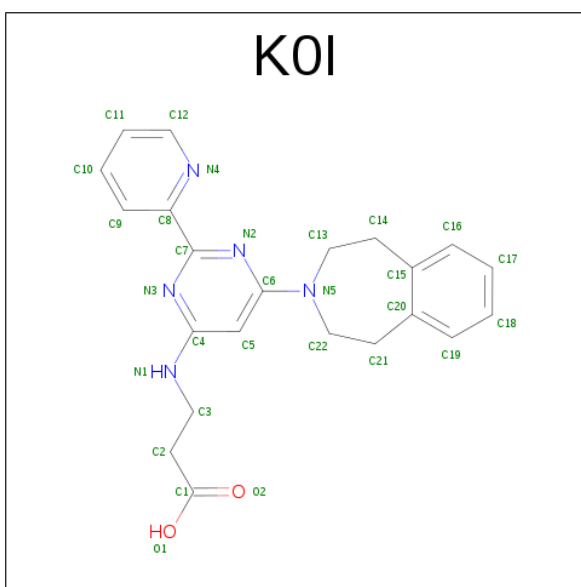
- Molecule 1 is a protein called HISTONE DEMETHYLASE UTY.

Mol	Chain	Residues	Atoms					ZeroOcc	AltConf	Trace
1	A	443	Total	C	N	O	S	0	13	0
			3596	2310	610	655	21			
1	B	438	Total	C	N	O	S	0	9	0
			3538	2271	599	648	20			

There are 16 discrepancies between the modelled and reference sequences:

Chain	Residue	Modelled	Actual	Comment	Reference
A	877	MET	-	EXPRESSION TAG	UNP O14607
A	1348	ALA	-	EXPRESSION TAG	UNP O14607
A	1349	GLU	-	EXPRESSION TAG	UNP O14607
A	1350	ASN	-	EXPRESSION TAG	UNP O14607
A	1351	LEU	-	EXPRESSION TAG	UNP O14607
A	1352	TYR	-	EXPRESSION TAG	UNP O14607
A	1353	PHE	-	EXPRESSION TAG	UNP O14607
A	1354	GLN	-	EXPRESSION TAG	UNP O14607
B	877	MET	-	EXPRESSION TAG	UNP O14607
B	1348	ALA	-	EXPRESSION TAG	UNP O14607
B	1349	GLU	-	EXPRESSION TAG	UNP O14607
B	1350	ASN	-	EXPRESSION TAG	UNP O14607
B	1351	LEU	-	EXPRESSION TAG	UNP O14607
B	1352	TYR	-	EXPRESSION TAG	UNP O14607
B	1353	PHE	-	EXPRESSION TAG	UNP O14607
B	1354	GLN	-	EXPRESSION TAG	UNP O14607

- Molecule 2 is 3-[[2-PYRIDIN-2-YL-6-(1,2,4,5-TETRAHYDRO-3-BENZAZEPIN-3-YL)PYRIMIDIN-4-YL]AMINO]PROPANOIC ACID (three-letter code: K0I) (formula: C<sub>22</sub>H<sub>23</sub>N<sub>5</sub>O<sub>2</sub>).



Mol	Chain	Residues	Atoms				ZeroOcc	AltConf
2	A	1	Total	C	N	O	0	0
			29	22	5	2		
2	B	1	Total	C	N	O	0	0
			29	22	5	2		

- Molecule 3 is ZINC ION (three-letter code: ZN) (formula: Zn).

Mol	Chain	Residues	Atoms		ZeroOcc	AltConf
3	B	1	Total	Zn	0	0
			1	1		
3	A	1	Total	Zn	0	0
			1	1		

- Molecule 4 is FE (II) ION (three-letter code: FE2) (formula: Fe).

Mol	Chain	Residues	Atoms		ZeroOcc	AltConf
4	B	1	Total	Fe	0	0
			1	1		
4	A	1	Total	Fe	0	0
			1	1		

- Molecule 5 is 1,2-ETHANEDIOL (three-letter code: EDO) (formula: C<sub>2</sub>H<sub>6</sub>O<sub>2</sub>).



Mol	Chain	Residues	Atoms			ZeroOcc	AltConf
5	A	1	Total	C	O	0	0
			4	2	2		
5	A	1	Total	C	O	0	0
			4	2	2		
5	A	1	Total	C	O	0	0
			4	2	2		
5	A	1	Total	C	O	0	0
			4	2	2		
5	A	1	Total	C	O	0	0
			4	2	2		
5	A	1	Total	C	O	0	0
			4	2	2		
5	A	1	Total	C	O	0	0
			4	2	2		
5	B	1	Total	C	O	0	0
			4	2	2		
5	B	1	Total	C	O	0	0
			4	2	2		
5	B	1	Total	C	O	0	0
			4	2	2		
5	B	1	Total	C	O	0	0
			4	2	2		

*Continued on next page...*

*Continued from previous page...*

Mol	Chain	Residues	Atoms			ZeroOcc	AltConf
5	B	1	Total	C	O	0	0
			4	2	2		
5	B	1	Total	C	O	0	0
			4	2	2		
5	B	1	Total	C	O	0	0
			4	2	2		

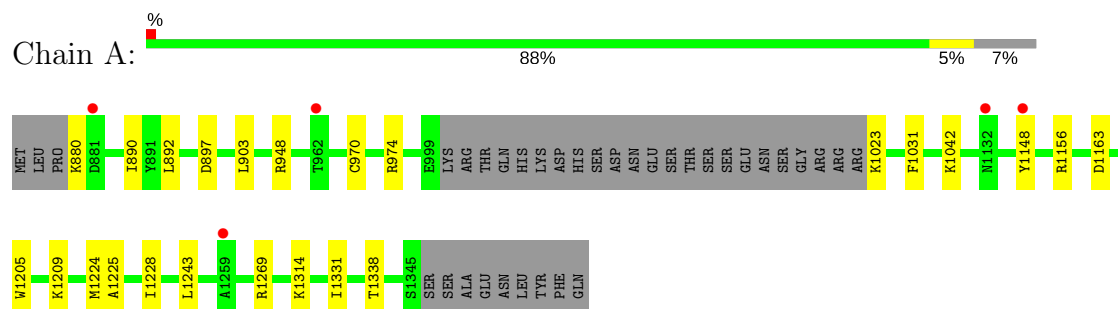
- Molecule 6 is water.

Mol	Chain	Residues	Atoms		ZeroOcc	AltConf
6	A	278	Total	O	0	0
			278	278		
6	B	263	Total	O	0	0
			263	263		

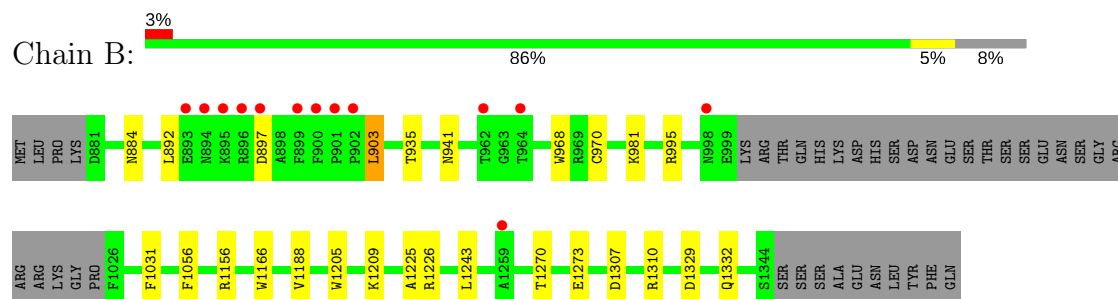
### 3 Residue-property plots [i](#)

These plots are drawn for all protein, RNA and DNA chains in the entry. The first graphic for a chain summarises the proportions of the various outlier classes displayed in the second graphic. The second graphic shows the sequence view annotated by issues in geometry and electron density. Residues are color-coded according to the number of geometric quality criteria for which they contain at least one outlier: green = 0, yellow = 1, orange = 2 and red = 3 or more. A red dot above a residue indicates a poor fit to the electron density ( $RSRZ > 2$ ). Stretches of 2 or more consecutive residues without any outlier are shown as a green connector. Residues present in the sample, but not in the model, are shown in grey.

#### • Molecule 1: HISTONE DEMETHYLASE UTY



#### • Molecule 1: HISTONE DEMETHYLASE UTY





## 4 Data and refinement statistics

Property	Value	Source
Space group	P 21 21 21	Depositor
Cell constants a, b, c, $\alpha$ , $\beta$ , $\gamma$	91.16Å 110.75Å 119.49Å 90.00° 90.00° 90.00°	Depositor
Resolution (Å)	37.51 – 2.00 37.48 – 2.00	Depositor EDS
% Data completeness (in resolution range)	98.9 (37.51-2.00) 99.0 (37.48-2.00)	Depositor EDS
$R_{merge}$	0.11	Depositor
$R_{sym}$	(Not available)	Depositor
$\langle I/\sigma(I) \rangle$ <sup>1</sup>	2.04 (at 2.00Å)	Xtriage
Refinement program	REFMAC 5.7.0032	Depositor
R, $R_{free}$	0.177 , 0.210 0.185 , 0.216	Depositor DCC
$R_{free}$ test set	4068 reflections (5.26%)	DCC
Wilson B-factor (Å <sup>2</sup> )	26.9	Xtriage
Anisotropy	0.523	Xtriage
Bulk solvent $k_{sol}$ (e/Å <sup>3</sup> ), $B_{sol}$ (Å <sup>2</sup> )	0.32 , 40.1	EDS
L-test for twinning <sup>2</sup>	$\langle  L  \rangle = 0.48$ , $\langle L^2 \rangle = 0.31$	Xtriage
Estimated twinning fraction	No twinning to report.	Xtriage
$F_o, F_c$ correlation	0.96	EDS
Total number of atoms	7805	wwPDB-VP
Average B, all atoms (Å <sup>2</sup> )	31.0	wwPDB-VP

Xtriage's analysis on translational NCS is as follows: *The largest off-origin peak in the Patterson function is 4.42% of the height of the origin peak. No significant pseudotranslation is detected.*

<sup>1</sup>Intensities estimated from amplitudes.

<sup>2</sup>Theoretical values of  $\langle |L| \rangle$ ,  $\langle L^2 \rangle$  for acentric reflections are 0.5, 0.333 respectively for untwinned datasets, and 0.375, 0.2 for perfectly twinned datasets.

## 5 Model quality [i](#)

### 5.1 Standard geometry [i](#)

Bond lengths and bond angles in the following residue types are not validated in this section: K0I, ZN, FE2, EDO

The Z score for a bond length (or angle) is the number of standard deviations the observed value is removed from the expected value. A bond length (or angle) with  $|Z| > 5$  is considered an outlier worth inspection. RMSZ is the root-mean-square of all Z scores of the bond lengths (or angles).

Mol	Chain	Bond lengths		Bond angles	
		RMSZ	# Z  >5	RMSZ	# Z  >5
1	A	0.60	0/3726	0.70	1/5076 (0.0%)
1	B	0.57	0/3658	0.69	3/4988 (0.1%)
All	All	0.58	0/7384	0.69	4/10064 (0.0%)

There are no bond length outliers.

All (4) bond angle outliers are listed below:

Mol	Chain	Res	Type	Atoms	Z	Observed(°)	Ideal(°)
1	B	1226	ARG	NE-CZ-NH2	-6.36	117.12	120.30
1	A	1156	ARG	NE-CZ-NH2	-6.21	117.20	120.30
1	B	1156	ARG	NE-CZ-NH2	-6.12	117.24	120.30
1	B	995	ARG	NE-CZ-NH1	5.15	122.87	120.30

There are no chirality outliers.

There are no planarity outliers.

### 5.2 Too-close contacts [i](#)

In the following table, the Non-H and H(model) columns list the number of non-hydrogen atoms and hydrogen atoms in the chain respectively. The H(added) column lists the number of hydrogen atoms added and optimized by MolProbity. The Clashes column lists the number of clashes within the asymmetric unit, whereas Symm-Clashes lists symmetry related clashes.

Mol	Chain	Non-H	H(model)	H(added)	Clashes	Symm-Clashes
1	A	3596	0	3506	16	0
1	B	3538	0	3438	22	0
2	A	29	0	22	0	0
2	B	29	0	22	0	0
3	A	1	0	0	0	0

*Continued on next page...*

*Continued from previous page...*

Mol	Chain	Non-H	H(model)	H(added)	Clashes	Symm-Clashes
3	B	1	0	0	0	0
4	A	1	0	0	0	0
4	B	1	0	0	0	0
5	A	36	0	54	2	0
5	B	32	0	48	5	0
6	A	278	0	0	0	0
6	B	263	0	0	3	0
All	All	7805	0	7090	35	0

The all-atom clashscore is defined as the number of clashes found per 1000 atoms (including hydrogen atoms). The all-atom clashscore for this structure is 2.

All (35) close contacts within the same asymmetric unit are listed below, sorted by their clash magnitude.

Atom-1	Atom-2	Interatomic distance (Å)	Clash overlap (Å)
1:A:1224[B]:MET:SD	1:A:1228:ILE:HD12	1.84	1.16
1:A:1224[B]:MET:SD	1:A:1228:ILE:CD1	2.60	0.89
1:B:968:TRP:H	5:B:2345:EDO:H21	1.50	0.77
1:B:1307[A]:ASP:OD2	6:B:2247:HOH:O	2.13	0.65
1:B:968:TRP:H	5:B:2345:EDO:C2	2.09	0.65
1:A:880:LYS:N	1:A:1148:TYR:HH	2.03	0.57
1:A:1224[B]:MET:CE	1:A:1228:ILE:HD12	2.36	0.56
1:B:903:LEU:HD23	1:B:1056:PHE:CE1	2.41	0.55
1:B:1166:TRP:CH2	1:B:1188[A]:VAL:HG21	2.42	0.55
1:A:1338:THR:HG21	1:B:1310[A]:ARG:HH12	1.74	0.51
1:B:884:ASN:ND2	6:B:2002:HOH:O	2.16	0.51
1:B:935:THR:CG2	5:B:2351:EDO:H11	2.41	0.50
1:A:890:ILE:HG21	1:A:903:LEU:HD13	1.93	0.50
1:B:941:ASN:ND2	6:B:2034:HOH:O	2.38	0.49
1:A:892:LEU:HD22	1:A:897:ASP:HB3	1.96	0.47
1:B:892:LEU:HD22	1:B:897:ASP:HB3	1.96	0.47
1:A:1338:THR:CG2	1:B:1310[A]:ARG:HH12	2.27	0.47
1:A:1205:TRP:CZ2	1:A:1209:LYS:HE3	2.50	0.47
1:B:1270:THR:CG2	1:B:1273:GLU:HB2	2.45	0.46
1:A:1163:ASP:OD1	5:A:2346:EDO:H12	2.17	0.44
1:B:1329[B]:ASP:HA	1:B:1332[B]:GLN:HG2	1.98	0.44
1:B:1225:ALA:HB2	1:B:1243:LEU:HD11	2.00	0.44
1:B:935:THR:HG23	5:B:2351:EDO:H11	2.00	0.44
1:B:1205:TRP:CZ2	1:B:1209:LYS:HE3	2.52	0.44
1:A:1338:THR:HG21	1:B:1310[A]:ARG:NH1	2.34	0.43
1:A:1042:LYS:HE2	5:A:2349:EDO:O1	2.18	0.43

*Continued on next page...*

*Continued from previous page...*

Atom-1	Atom-2	Interatomic distance (Å)	Clash overlap (Å)
1:B:1166:TRP:CH2	1:B:1188[A]:VAL:CG2	3.02	0.43
1:A:1225:ALA:HB2	1:A:1243:LEU:HD11	2.01	0.42
1:A:970:CYS:O	1:A:970:CYS:SG	2.77	0.42
1:B:1329[B]:ASP:HA	1:B:1332[B]:GLN:CG	2.50	0.42
1:B:935:THR:CG2	5:B:2351:EDO:C1	2.98	0.41
1:B:970:CYS:O	1:B:970:CYS:SG	2.79	0.41
1:A:948:ARG:CZ	1:A:974:ARG:HG2	2.51	0.41
1:A:1314:LYS:HD3	1:A:1314:LYS:HA	1.88	0.40

There are no symmetry-related clashes.

## 5.3 Torsion angles [i](#)

### 5.3.1 Protein backbone [i](#)

In the following table, the Percentiles column shows the percent Ramachandran outliers of the chain as a percentile score with respect to all X-ray entries followed by that with respect to entries of similar resolution.

The Analysed column shows the number of residues for which the backbone conformation was analysed, and the total number of residues.

Mol	Chain	Analysed	Favoured	Allowed	Outliers	Percentiles	
1	A	452/478 (95%)	443 (98%)	9 (2%)	0	100	100
1	B	443/478 (93%)	434 (98%)	9 (2%)	0	100	100
All	All	895/956 (94%)	877 (98%)	18 (2%)	0	100	100

There are no Ramachandran outliers to report.

### 5.3.2 Protein sidechains [i](#)

In the following table, the Percentiles column shows the percent sidechain outliers of the chain as a percentile score with respect to all X-ray entries followed by that with respect to entries of similar resolution.

The Analysed column shows the number of residues for which the sidechain conformation was analysed, and the total number of residues.

Mol	Chain	Analysed	Rotameric	Outliers	Percentiles	
1	A	394/432 (91%)	390 (99%)	4 (1%)	80	84

*Continued on next page...*

*Continued from previous page...*

Mol	Chain	Analysed	Rotameric	Outliers	Percentiles	
1	B	388/432 (90%)	385 (99%)	3 (1%)	85	88
All	All	782/864 (90%)	775 (99%)	7 (1%)	82	87

All (7) residues with a non-rotameric sidechain are listed below:

Mol	Chain	Res	Type
1	A	1023	LYS
1	A	1031	PHE
1	A	1269	ARG
1	A	1331	ILE
1	B	903	LEU
1	B	981	LYS
1	B	1031	PHE

Some sidechains can be flipped to improve hydrogen bonding and reduce clashes. There are no such sidechains identified.

### 5.3.3 RNA ⓘ

There are no RNA molecules in this entry.

## 5.4 Non-standard residues in protein, DNA, RNA chains ⓘ

There are no non-standard protein/DNA/RNA residues in this entry.

## 5.5 Carbohydrates ⓘ

There are no carbohydrates in this entry.

## 5.6 Ligand geometry ⓘ

Of 23 ligands modelled in this entry, 4 are monoatomic - leaving 19 for Mogul analysis.

In the following table, the Counts columns list the number of bonds (or angles) for which Mogul statistics could be retrieved, the number of bonds (or angles) that are observed in the model and the number of bonds (or angles) that are defined in the chemical component dictionary. The Link column lists molecule types, if any, to which the group is linked. The Z score for a bond length (or angle) is the number of standard deviations the observed value is removed from the expected

value. A bond length (or angle) with  $|Z| > 2$  is considered an outlier worth inspection. RMSZ is the root-mean-square of all Z scores of the bond lengths (or angles).

Mol	Type	Chain	Res	Link	Bond lengths			Bond angles		
					Counts	RMSZ	# Z  > 2	Counts	RMSZ	# Z  > 2
2	K0I	A	1900	4	29,32,32	0.36	0	36,43,43	0.60	1 (2%)
5	EDO	A	2346	-	3,3,3	0.69	0	2,2,2	0.46	0
5	EDO	A	2347	-	3,3,3	0.36	0	2,2,2	0.66	0
5	EDO	A	2348	-	3,3,3	0.49	0	2,2,2	0.30	0
5	EDO	A	2349	-	3,3,3	0.45	0	2,2,2	0.36	0
5	EDO	A	2350	-	3,3,3	0.41	0	2,2,2	0.46	0
5	EDO	A	2351	-	3,3,3	0.43	0	2,2,2	0.27	0
5	EDO	A	2352	-	3,3,3	0.69	0	2,2,2	0.05	0
5	EDO	A	2353	-	3,3,3	0.32	0	2,2,2	0.19	0
5	EDO	A	2354	-	3,3,3	0.57	0	2,2,2	0.17	0
2	K0I	B	1900	4	29,32,32	0.34	0	36,43,43	0.72	1 (2%)
5	EDO	B	2345	-	3,3,3	0.49	0	2,2,2	0.31	0
5	EDO	B	2346	-	3,3,3	0.40	0	2,2,2	0.18	0
5	EDO	B	2347	-	3,3,3	0.52	0	2,2,2	0.56	0
5	EDO	B	2348	-	3,3,3	0.41	0	2,2,2	0.29	0
5	EDO	B	2349	-	3,3,3	0.56	0	2,2,2	0.34	0
5	EDO	B	2350	-	3,3,3	0.39	0	2,2,2	0.27	0
5	EDO	B	2351	-	3,3,3	0.51	0	2,2,2	0.24	0
5	EDO	B	2352	-	3,3,3	0.71	0	2,2,2	0.03	0

In the following table, the Chirals column lists the number of chiral outliers, the number of chiral centers analysed, the number of these observed in the model and the number defined in the chemical component dictionary. Similar counts are reported in the Torsion and Rings columns. '-' means no outliers of that kind were identified.

Mol	Type	Chain	Res	Link	Chirals	Torsions	Rings
2	K0I	A	1900	4	-	0/10/24/24	0/3/4/4
5	EDO	A	2346	-	-	0/1/1/1	0/0/0/0
5	EDO	A	2347	-	-	0/1/1/1	0/0/0/0
5	EDO	A	2348	-	-	0/1/1/1	0/0/0/0
5	EDO	A	2349	-	-	0/1/1/1	0/0/0/0
5	EDO	A	2350	-	-	0/1/1/1	0/0/0/0
5	EDO	A	2351	-	-	0/1/1/1	0/0/0/0
5	EDO	A	2352	-	-	0/1/1/1	0/0/0/0
5	EDO	A	2353	-	-	0/1/1/1	0/0/0/0
5	EDO	A	2354	-	-	0/1/1/1	0/0/0/0
2	K0I	B	1900	4	-	0/10/24/24	0/3/4/4
5	EDO	B	2345	-	-	0/1/1/1	0/0/0/0
5	EDO	B	2346	-	-	0/1/1/1	0/0/0/0
5	EDO	B	2347	-	-	0/1/1/1	0/0/0/0
5	EDO	B	2348	-	-	0/1/1/1	0/0/0/0
5	EDO	B	2349	-	-	0/1/1/1	0/0/0/0

*Continued on next page...*

*Continued from previous page...*

Mol	Type	Chain	Res	Link	Chirals	Torsions	Rings
5	EDO	B	2350	-	-	0/1/1/1	0/0/0/0
5	EDO	B	2351	-	-	0/1/1/1	0/0/0/0
5	EDO	B	2352	-	-	0/1/1/1	0/0/0/0

There are no bond length outliers.

All (2) bond angle outliers are listed below:

Mol	Chain	Res	Type	Atoms	Z	Observed(°)	Ideal(°)
2	A	1900	K0I	C6-N2-C7	2.53	118.38	116.00
2	B	1900	K0I	C6-N2-C7	2.87	118.71	116.00

There are no chirality outliers.

There are no torsion outliers.

There are no ring outliers.

4 monomers are involved in 7 short contacts:

Mol	Chain	Res	Type	Clashes	Symm-Clashes
5	A	2346	EDO	1	0
5	A	2349	EDO	1	0
5	B	2345	EDO	2	0
5	B	2351	EDO	3	0

## 5.7 Other polymers [i](#)

There are no such residues in this entry.

## 5.8 Polymer linkage issues [i](#)

There are no chain breaks in this entry.



## 6 Fit of model and data [i](#)

### 6.1 Protein, DNA and RNA chains [i](#)

In the following table, the column labelled ‘#RSRZ> 2’ contains the number (and percentage) of RSRZ outliers, followed by percent RSRZ outliers for the chain as percentile scores relative to all X-ray entries and entries of similar resolution. The OWAB column contains the minimum, median, 95<sup>th</sup> percentile and maximum values of the occupancy-weighted average B-factor per residue. The column labelled ‘Q< 0.9’ lists the number of (and percentage) of residues with an average occupancy less than 0.9.

Mol	Chain	Analysed	<RSRZ>	#RSRZ>2	OWAB(Å <sup>2</sup> )	Q<0.9
1	A	443/478 (92%)	-0.29	5 (1%) 80 80	18, 28, 48, 74	0
1	B	438/478 (91%)	-0.25	13 (2%) 51 51	19, 29, 49, 85	0
All	All	881/956 (92%)	-0.27	18 (2%) 65 65	18, 29, 48, 85	0

All (18) RSRZ outliers are listed below:

Mol	Chain	Res	Type	RSRZ
1	B	899	PHE	6.6
1	B	901	PRO	4.9
1	B	897	ASP	3.7
1	B	894	ASN	3.7
1	A	962	THR	3.0
1	A	881	ASP	3.0
1	B	900	PHE	2.9
1	A	1148	TYR	2.9
1	B	1259	ALA	2.8
1	B	893	GLU	2.7
1	A	1132	ASN	2.6
1	A	1259	ALA	2.5
1	B	962	THR	2.5
1	B	964	THR	2.4
1	B	896	ARG	2.3
1	B	902	PRO	2.3
1	B	998	ASN	2.3
1	B	895	LYS	2.1

### 6.2 Non-standard residues in protein, DNA, RNA chains [i](#)

There are no non-standard protein/DNA/RNA residues in this entry.

### 6.3 Carbohydrates [i](#)

There are no carbohydrates in this entry.

### 6.4 Ligands [i](#)

In the following table, the Atoms column lists the number of modelled atoms in the group and the number defined in the chemical component dictionary. LLDF column lists the quality of electron density of the group with respect to its neighbouring residues in protein, DNA or RNA chains. The B-factors column lists the minimum, median, 95<sup>th</sup> percentile and maximum values of B factors of atoms in the group. The column labelled 'Q< 0.9' lists the number of atoms with occupancy less than 0.9.

Mol	Type	Chain	Res	Atoms	RSCC	RSR	LLDF	B-factors( $\text{\AA}^2$ )	Q<0.9
5	EDO	A	2346	4/4	0.83	0.29	30.69	38,38,41,43	0
5	EDO	A	2349	4/4	0.93	0.48	24.19	42,46,49,50	0
5	EDO	B	2347	4/4	0.70	0.29	9.75	45,47,50,56	0
5	EDO	B	2351	4/4	0.91	0.37	8.87	40,42,43,44	0
5	EDO	B	2352	4/4	0.81	0.20	8.31	46,53,55,55	0
5	EDO	A	2353	4/4	0.88	0.26	3.81	39,44,48,51	0
5	EDO	A	2352	4/4	0.82	0.17	3.09	44,47,48,51	0
5	EDO	A	2354	4/4	0.94	0.13	1.98	39,43,44,45	0
5	EDO	B	2349	4/4	0.94	0.11	1.71	32,40,41,44	0
5	EDO	A	2348	4/4	0.88	0.13	1.48	43,45,46,51	0
5	EDO	B	2346	4/4	0.91	0.11	1.44	49,50,50,51	0
5	EDO	A	2350	4/4	0.92	0.12	1.41	30,36,40,41	0
5	EDO	A	2347	4/4	0.97	0.12	1.19	29,32,33,34	0
2	K0I	A	1900	29/29	0.96	0.14	0.82	20,22,28,30	0
5	EDO	B	2345	4/4	0.89	0.12	0.41	33,34,34,50	0
2	K0I	B	1900	29/29	0.95	0.14	0.38	22,24,28,31	0
3	ZN	A	1901	1/1	0.99	0.05	-1.41	28,28,28,28	0
3	ZN	B	1902	1/1	0.99	0.05	-1.71	27,27,27,27	0
5	EDO	A	2351	4/4	0.85	0.16	-	45,46,46,54	0
5	EDO	B	2350	4/4	0.89	0.30	-	36,47,48,55	0
5	EDO	B	2348	4/4	0.91	0.15	-	47,49,51,58	0
4	FE2	A	1902	1/1	1.00	0.03	-	30,30,30,30	0
4	FE2	B	1901	1/1	1.00	0.04	-	30,30,30,30	0

### 6.5 Other polymers [i](#)

There are no such residues in this entry.