



Full wwPDB X-ray Structure Validation Report ⓘ

Feb 13, 2017 – 09:40 am GMT

PDB ID : 4ZS3
Title : Structural complex of 5-aminofluorescein bound to the FTO protein
Authors : Wang, T.; Hong, T.; Huang, Y.; Yang, C.G.; Zhou, X.
Deposited on : 2015-05-13
Resolution : 2.45 Å(reported)

This is a Full wwPDB X-ray Structure Validation Report for a publicly released PDB entry.

We welcome your comments at validation@mail.wwpdb.org

A user guide is available at

<http://wwpdb.org/validation/2016/XrayValidationReportHelp>

with specific help available everywhere you see the ⓘ symbol.

The following versions of software and data (see [references ⓘ](#)) were used in the production of this report:

MolProbity : 4.02b-467
Mogul : 1.7.2 (RC1), CSD as538be (2017)
Xtriage (Phenix) : 1.9-1692
EDS : trunk28620
Percentile statistics : 20161228.v01 (using entries in the PDB archive December 28th 2016)
Refmac : 5.8.0135
CCP4 : 6.5.0
Ideal geometry (proteins) : Engh & Huber (2001)
Ideal geometry (DNA, RNA) : Parkinson et al. (1996)
Validation Pipeline (wwPDB-VP) : recalc28949

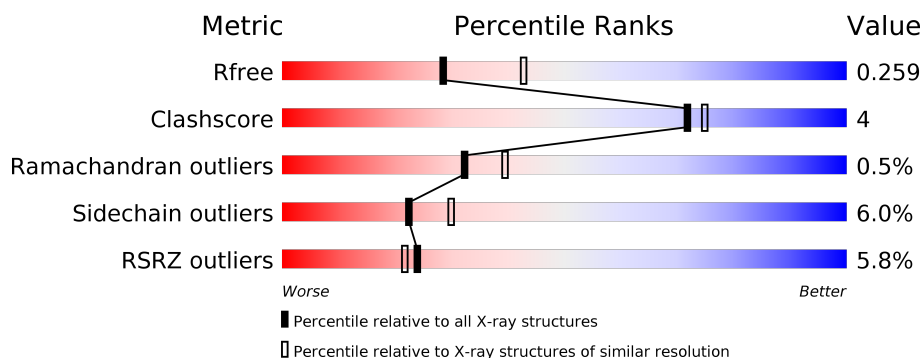
1 Overall quality at a glance

The following experimental techniques were used to determine the structure:

X-RAY DIFFRACTION

The reported resolution of this entry is 2.45 Å.

Percentile scores (ranging between 0-100) for global validation metrics of the entry are shown in the following graphic. The table shows the number of entries on which the scores are based.



Metric	Whole archive (#Entries)	Similar resolution (#Entries, resolution range(Å))
R_{free}	100719	1119 (2.48-2.44)
Clashscore	112137	1193 (2.48-2.44)
Ramachandran outliers	110173	1185 (2.48-2.44)
Sidechain outliers	110143	1185 (2.48-2.44)
RSRZ outliers	101464	1126 (2.48-2.44)

The table below summarises the geometric issues observed across the polymeric chains and their fit to the electron density. The red, orange, yellow and green segments on the lower bar indicate the fraction of residues that contain outliers for ≥ 3 , 2, 1 and 0 types of geometric quality criteria. A grey segment represents the fraction of residues that are not modelled. The numeric value for each fraction is indicated below the corresponding segment, with a dot representing fractions $\leq 5\%$. The upper red bar (where present) indicates the fraction of residues that have poor fit to the electron density. The numeric value is given above the bar.

Mol	Chain	Length	Quality of chain
1	A	478	<div> <div>5%</div> <div>78%</div> <div>11%</div> <div>10%</div> </div>

2 Entry composition [i](#)

There are 5 unique types of molecules in this entry. The entry contains 3604 atoms, of which 0 are hydrogens and 0 are deuteriums.

In the tables below, the ZeroOcc column contains the number of atoms modelled with zero occupancy, the AltConf column contains the number of residues with at least one atom in alternate conformation and the Trace column contains the number of residues modelled with at most 2 atoms.

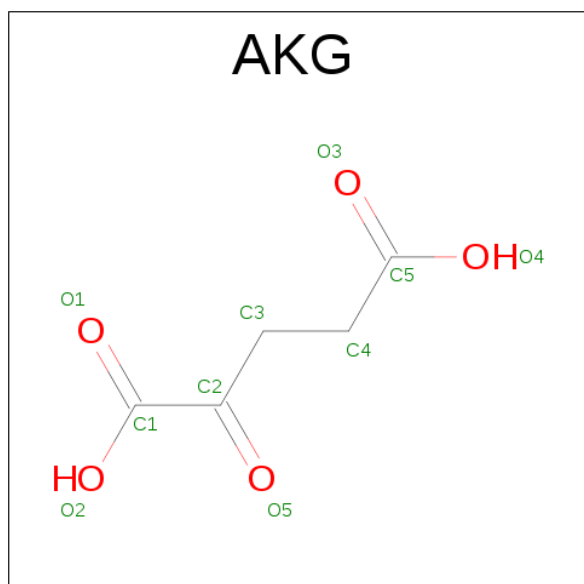
- Molecule 1 is a protein called Alpha-ketoglutarate-dependent dioxygenase FTO.

Mol	Chain	Residues	Atoms					ZeroOcc	AltConf	Trace
			Total	C	N	O	S			
1	A	432	3515	2229	608	656	22	0	1	0

There are 4 discrepancies between the modelled and reference sequences:

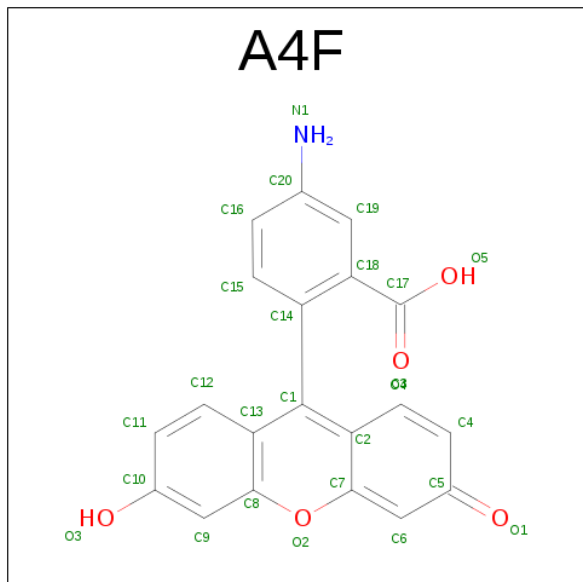
Chain	Residue	Modelled	Actual	Comment	Reference
A	28	GLY	-	expression tag	UNP Q9C0B1
A	29	SER	-	expression tag	UNP Q9C0B1
A	30	HIS	-	expression tag	UNP Q9C0B1
A	31	MET	-	expression tag	UNP Q9C0B1

- Molecule 2 is 2-OXOGLUTARIC ACID (three-letter code: AKG) (formula: $C_5H_6O_5$).



Mol	Chain	Residues	Atoms			ZeroOcc	AltConf
			Total	C	O		
2	A	1	10	5	5	0	0

- Molecule 3 is 5-amino-2-(6-hydroxy-3-oxo-3H-xanthen-9-yl)benzoic acid (three-letter code: A4F) (formula: C₂₀H₁₃NO₅).



Mol	Chain	Residues	Atoms				ZeroOcc	AltConf
3	A	1	Total	C	N	O	0	0
			26	20	1	5		

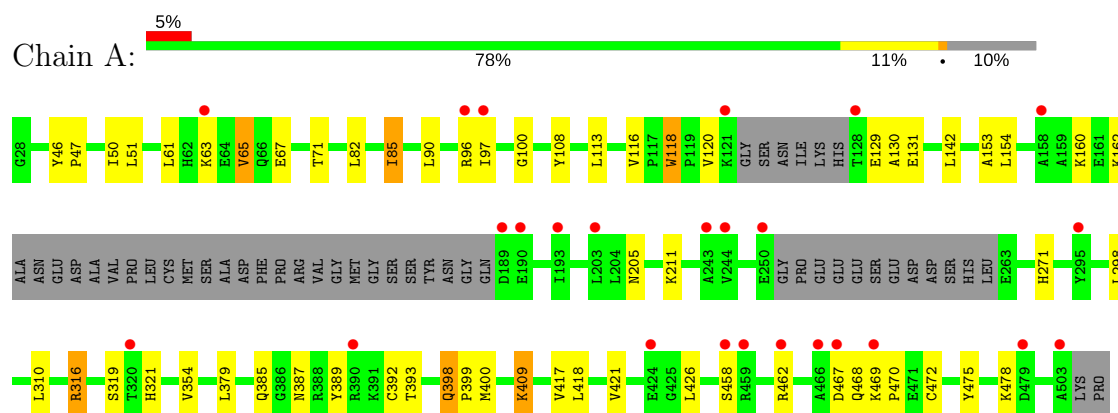
- Molecule 4 is MANGANESE (II) ION (three-letter code: MN) (formula: Mn).

Mol	Chain	Residues	Atoms		ZeroOcc	AltConf
4	A	1	Total	Mn	0	0
			1	1		

- Molecule 5 is water.

Mol	Chain	Residues	Atoms		ZeroOcc	AltConf
5	A	52	Total	O	0	0
			52	52		

- Molecule 1: Alpha-ketoglutarate-dependent dioxygenase FTO



4 Data and refinement statistics

Property	Value	Source
Space group	H 3	Depositor
Cell constants a, b, c, α , β , γ	142.24Å 142.24Å 83.43Å 90.00° 90.00° 120.00°	Depositor
Resolution (Å)	28.91 – 2.45 28.89 – 2.45	Depositor EDS
% Data completeness (in resolution range)	99.6 (28.91-2.45) 99.7 (28.89-2.45)	Depositor EDS
R_{merge}	(Not available)	Depositor
R_{sym}	(Not available)	Depositor
$\langle I/\sigma(I) \rangle$ ¹	1.88 (at 2.45Å)	Xtriage
Refinement program	REFMAC 5.7.0029	Depositor
R, R_{free}	0.206 , 0.263 0.206 , 0.259	Depositor DCC
R_{free} test set	1181 reflections (5.41%)	DCC
Wilson B-factor (Å ²)	61.2	Xtriage
Anisotropy	0.372	Xtriage
Bulk solvent k_{sol} (e/Å ³), B_{sol} (Å ²)	0.32 , 43.0	EDS
L-test for twinning ²	$\langle L \rangle = 0.50$, $\langle L^2 \rangle = 0.34$	Xtriage
Estimated twinning fraction	0.007 for -2/3*h-1/3*k-4/3*l,-1/3*h-2/3*k+4/3*l,-1/3*h+1/3*k+1/3*l 0.007 for -h,1/3*h-1/3*k-4/3*l,-1/3*h-2/3*k+1/3*l 0.006 for -1/3*h+1/3*k+4/3*l,-k,2/3*h+1/3*k+1/3*l 0.000 for -h,2/3*h+1/3*k+4/3*l,1/3*h+2/3*k-1/3*l 0.006 for -1/3*h-2/3*k+4/3*l,-2/3*h-1/3*k-4/3*l,1/3*h-1/3*k-1/3*l 0.004 for 1/3*h+2/3*k-4/3*l,-k,-2/3*h-1/3*k-1/3*l 0.017 for h,-h-k,-l	Xtriage
F_o , F_c correlation	0.95	EDS
Total number of atoms	3604	wwPDB-VP
Average B, all atoms (Å ²)	69.0	wwPDB-VP

Xtriage's analysis on translational NCS is as follows: *The largest off-origin peak in the Patterson function is 4.72% of the height of the origin peak. No significant pseudotranslation is detected.*

¹Intensities estimated from amplitudes.

²Theoretical values of $\langle |L| \rangle$, $\langle L^2 \rangle$ for acentric reflections are 0.5, 0.333 respectively for untwinned datasets, and 0.375, 0.2 for perfectly twinned datasets.

5 Model quality [i](#)

5.1 Standard geometry [i](#)

Bond lengths and bond angles in the following residue types are not validated in this section: A4F, MN, AKG

The Z score for a bond length (or angle) is the number of standard deviations the observed value is removed from the expected value. A bond length (or angle) with $|Z| > 5$ is considered an outlier worth inspection. RMSZ is the root-mean-square of all Z scores of the bond lengths (or angles).

Mol	Chain	Bond lengths		Bond angles	
		RMSZ	$\# Z > 5$	RMSZ	$\# Z > 5$
1	A	0.37	0/3603	0.60	1/4885 (0.0%)

There are no bond length outliers.

All (1) bond angle outliers are listed below:

Mol	Chain	Res	Type	Atoms	Z	Observed($^{\circ}$)	Ideal($^{\circ}$)
1	A	316	ARG	NE-CZ-NH1	5.97	123.29	120.30

There are no chirality outliers.

There are no planarity outliers.

5.2 Too-close contacts [i](#)

In the following table, the Non-H and H(model) columns list the number of non-hydrogen atoms and hydrogen atoms in the chain respectively. The H(added) column lists the number of hydrogen atoms added and optimized by MolProbity. The Clashes column lists the number of clashes within the asymmetric unit, whereas Symm-Clashes lists symmetry related clashes.

Mol	Chain	Non-H	H(model)	H(added)	Clashes	Symm-Clashes
1	A	3515	0	3412	27	0
2	A	10	0	4	3	0
3	A	26	0	11	1	0
4	A	1	0	0	0	0
5	A	52	0	0	0	0
All	All	3604	0	3427	28	0

The all-atom clashscore is defined as the number of clashes found per 1000 atoms (including hydrogen atoms). The all-atom clashscore for this structure is 4.

All (28) close contacts within the same asymmetric unit are listed below, sorted by their clash magnitude.

Atom-1	Atom-2	Interatomic distance (Å)	Clash overlap (Å)
1:A:97:ILE:HD11	1:A:116:VAL:HG11	1.71	0.73
1:A:379:LEU:HD23	1:A:400:MET:HE3	1.79	0.64
1:A:379:LEU:HD23	1:A:400:MET:CE	2.31	0.61
1:A:398:GLN:HG3	1:A:399:PRO:HD3	1.84	0.59
1:A:129:GLU:O	1:A:131:GLU:N	2.38	0.57
1:A:469:LYS:HG3	1:A:470:PRO:HD2	1.89	0.55
1:A:85:ILE:HG23	1:A:90:LEU:HD12	1.87	0.55
1:A:67:GLU:O	1:A:71:THR:HG23	2.06	0.54
1:A:385:GLN:OE1	1:A:389:TYR:OH	2.23	0.54
1:A:379:LEU:HA	1:A:400:MET:HE1	1.91	0.52
1:A:96:ARG:NH2	1:A:205:ASN:OD1	2.44	0.51
1:A:354:VAL:HG22	1:A:409:LYS:HE2	1.94	0.49
1:A:389:TYR:O	1:A:392:CYS:N	2.39	0.49
1:A:319:SER:OG	1:A:321:HIS:NE2	2.45	0.47
1:A:61:LEU:O	1:A:65:VAL:HG13	2.15	0.47
1:A:96:ARG:NH2	2:A:601:AKG:O2	2.49	0.46
1:A:50:ILE:HD12	1:A:298:LEU:HD11	1.99	0.45
1:A:271:HIS:HB2	1:A:310:LEU:HD12	1.98	0.45
1:A:389:TYR:O	1:A:393:THR:N	2.33	0.45
1:A:129:GLU:OE2	1:A:129:GLU:N	2.51	0.44
1:A:46:TYR:N	1:A:47:PRO:CD	2.81	0.44
1:A:316:ARG:HH22	2:A:601:AKG:C5	2.32	0.42
1:A:472:CYS:O	1:A:475:TYR:HB2	2.19	0.42
1:A:50:ILE:CD1	1:A:153:ALA:HB1	2.49	0.41
1:A:316:ARG:NH2	2:A:601:AKG:O4	2.47	0.41
1:A:417:VAL:O	1:A:421:VAL:HG23	2.20	0.41
3:A:602:A4F:H12	3:A:602:A4F:C18	2.50	0.40
1:A:100:GLY:HA2	1:A:118:TRP:CE2	2.56	0.40

There are no symmetry-related clashes.

5.3 Torsion angles

5.3.1 Protein backbone

In the following table, the Percentiles column shows the percent Ramachandran outliers of the chain as a percentile score with respect to all X-ray entries followed by that with respect to entries of similar resolution.

The Analysed column shows the number of residues for which the backbone conformation was analysed, and the total number of residues.

Mol	Chain	Analysed	Favoured	Allowed	Outliers	Percentiles	
1	A	425/478 (89%)	411 (97%)	12 (3%)	2 (0%)	32	39

All (2) Ramachandran outliers are listed below:

Mol	Chain	Res	Type
1	A	130	ALA
1	A	458	SER

5.3.2 Protein sidechains ⓘ

In the following table, the Percentiles column shows the percent sidechain outliers of the chain as a percentile score with respect to all X-ray entries followed by that with respect to entries of similar resolution.

The Analysed column shows the number of residues for which the sidechain conformation was analysed, and the total number of residues.

Mol	Chain	Analysed	Rotameric	Outliers	Percentiles	
1	A	382/421 (91%)	359 (94%)	23 (6%)	22	30

All (23) residues with a non-rotameric sidechain are listed below:

Mol	Chain	Res	Type
1	A	51	LEU
1	A	63	LYS
1	A	65	VAL
1	A	82	LEU
1	A	85	ILE
1	A	108	TYR
1	A	113	LEU
1	A	118	TRP
1	A	120	VAL
1	A	142	LEU
1	A	154	LEU
1	A	160	LYS
1	A	162	LYS
1	A	211	LYS
1	A	387	ASN
1	A	398	GLN
1	A	409	LYS

Continued on next page...

Continued from previous page...

Mol	Chain	Res	Type
1	A	418	LEU
1	A	426	LEU
1	A	462	ARG
1	A	467	ASP
1	A	468	GLN
1	A	478	LYS

Some sidechains can be flipped to improve hydrogen bonding and reduce clashes. There are no such sidechains identified.

5.3.3 RNA [i](#)

There are no RNA molecules in this entry.

5.4 Non-standard residues in protein, DNA, RNA chains [i](#)

There are no non-standard protein/DNA/RNA residues in this entry.

5.5 Carbohydrates [i](#)

There are no carbohydrates in this entry.

5.6 Ligand geometry [i](#)

Of 3 ligands modelled in this entry, 1 is monoatomic - leaving 2 for Mogul analysis.

In the following table, the Counts columns list the number of bonds (or angles) for which Mogul statistics could be retrieved, the number of bonds (or angles) that are observed in the model and the number of bonds (or angles) that are defined in the chemical component dictionary. The Link column lists molecule types, if any, to which the group is linked. The Z score for a bond length (or angle) is the number of standard deviations the observed value is removed from the expected value. A bond length (or angle) with $|Z| > 2$ is considered an outlier worth inspection. RMSZ is the root-mean-square of all Z scores of the bond lengths (or angles).

Mol	Type	Chain	Res	Link	Bond lengths			Bond angles		
					Counts	RMSZ	$\# Z > 2$	Counts	RMSZ	$\# Z > 2$
2	AKG	A	601	4	3,9,9	0.38	0	4,11,11	1.52	1 (25%)
3	A4F	A	602	-	25,29,29	2.30	3 (12%)	28,43,43	0.99	3 (10%)

In the following table, the Chirals column lists the number of chiral outliers, the number of chiral

centers analysed, the number of these observed in the model and the number defined in the chemical component dictionary. Similar counts are reported in the Torsion and Rings columns. '-' means no outliers of that kind were identified.

Mol	Type	Chain	Res	Link	Chirals	Torsions	Rings
2	AKG	A	601	4	-	0/3/9/9	0/0/0/0
3	A4F	A	602	-	-	0/4/12/12	0/4/4/4

All (3) bond length outliers are listed below:

Mol	Chain	Res	Type	Atoms	Z	Observed(Å)	Ideal(Å)
3	A	602	A4F	C14-C1	-8.46	1.39	1.50
3	A	602	A4F	O2-C7	3.06	1.39	1.35
3	A	602	A4F	O1-C5	5.78	1.33	1.23

All (4) bond angle outliers are listed below:

Mol	Chain	Res	Type	Atoms	Z	Observed(°)	Ideal(°)
2	A	601	AKG	C3-C2-C1	-2.15	116.72	121.60
3	A	602	A4F	C14-C1-C13	2.02	122.86	119.44
3	A	602	A4F	C19-C18-C14	2.23	121.71	118.80
3	A	602	A4F	O2-C7-C6	2.43	118.91	116.03

There are no chirality outliers.

There are no torsion outliers.

There are no ring outliers.

2 monomers are involved in 4 short contacts:

Mol	Chain	Res	Type	Clashes	Symm-Clashes
2	A	601	AKG	3	0
3	A	602	A4F	1	0

5.7 Other polymers [i](#)

There are no such residues in this entry.

5.8 Polymer linkage issues [i](#)

There are no chain breaks in this entry.

6 Fit of model and data ⓘ

6.1 Protein, DNA and RNA chains ⓘ

In the following table, the column labelled ‘#RSRZ > 2’ contains the number (and percentage) of RSRZ outliers, followed by percent RSRZ outliers for the chain as percentile scores relative to all X-ray entries and entries of similar resolution. The OWAB column contains the minimum, median, 95th percentile and maximum values of the occupancy-weighted average B-factor per residue. The column labelled ‘Q < 0.9’ lists the number of (and percentage) of residues with an average occupancy less than 0.9.

Mol	Chain	Analysed	<RSRZ>	#RSRZ>2	OWAB(Å ²)	Q<0.9
1	A	432/478 (90%)	0.13	25 (5%) 24 22	42, 64, 111, 129	0

All (25) RSRZ outliers are listed below:

Mol	Chain	Res	Type	RSRZ
1	A	466	ALA	5.6
1	A	503	ALA	5.1
1	A	458	SER	4.5
1	A	121	LYS	3.9
1	A	467	ASP	3.6
1	A	424	GLU	3.3
1	A	193	ILE	3.0
1	A	462	ARG	2.5
1	A	189	ASP	2.5
1	A	295	TYR	2.5
1	A	243	ALA	2.5
1	A	190	GLU	2.4
1	A	63	LYS	2.4
1	A	320	THR	2.4
1	A	390	ARG	2.4
1	A	244	VAL	2.4
1	A	97	ILE	2.4
1	A	128	THR	2.3
1	A	459	ARG	2.2
1	A	479	ASP	2.2
1	A	96	ARG	2.1
1	A	250	GLU	2.1
1	A	203	LEU	2.1
1	A	469	LYS	2.1
1	A	158	ALA	2.0

6.2 Non-standard residues in protein, DNA, RNA chains [i](#)

There are no non-standard protein/DNA/RNA residues in this entry.

6.3 Carbohydrates [i](#)

There are no carbohydrates in this entry.

6.4 Ligands [i](#)

In the following table, the Atoms column lists the number of modelled atoms in the group and the number defined in the chemical component dictionary. LLDF column lists the quality of electron density of the group with respect to its neighbouring residues in protein, DNA or RNA chains. The B-factors column lists the minimum, median, 95th percentile and maximum values of B factors of atoms in the group. The column labelled 'Q< 0.9' lists the number of atoms with occupancy less than 0.9.

Mol	Type	Chain	Res	Atoms	RSCC	RSR	LLDF	B-factors(\AA^2)	Q<0.9
2	AKG	A	601	10/10	0.90	0.26	0.59	56,69,77,80	0
3	A4F	A	602	26/26	0.88	0.18	0.37	66,78,93,95	0
4	MN	A	603	1/1	0.98	0.16	-	94,94,94,94	0

6.5 Other polymers [i](#)

There are no such residues in this entry.