



wwPDB X-ray Structure Validation Summary Report ⓘ

Feb 13, 2017 – 11:24 am GMT

PDB ID : 2ZZ4
Title : Covalent complex of orotidine monophosphate decarboxylase D75N mutant from *M. thermoautotrophicum* with 6-cyano-UMP
Authors : Fujihashi, M.; Pai, E.F.
Deposited on : 2009-02-05
Resolution : 1.67 Å(reported)

This is a wwPDB X-ray Structure Validation Summary Report for a publicly released PDB entry.

We welcome your comments at validation@mail.wwpdb.org

A user guide is available at

<http://wwpdb.org/validation/2016/XrayValidationReportHelp>

with specific help available everywhere you see the ⓘ symbol.

The following versions of software and data (see [references ⓘ](#)) were used in the production of this report:

MolProbity : 4.02b-467
Mogul : 1.7.2 (RC1), CSD as538be (2017)
Xtriage (Phenix) : 1.9-1692
EDS : trunk28620
Percentile statistics : 20161228.v01 (using entries in the PDB archive December 28th 2016)
Refmac : 5.8.0135
CCP4 : 6.5.0
Ideal geometry (proteins) : Engh & Huber (2001)
Ideal geometry (DNA, RNA) : Parkinson et al. (1996)
Validation Pipeline (wwPDB-VP) : recalc28949

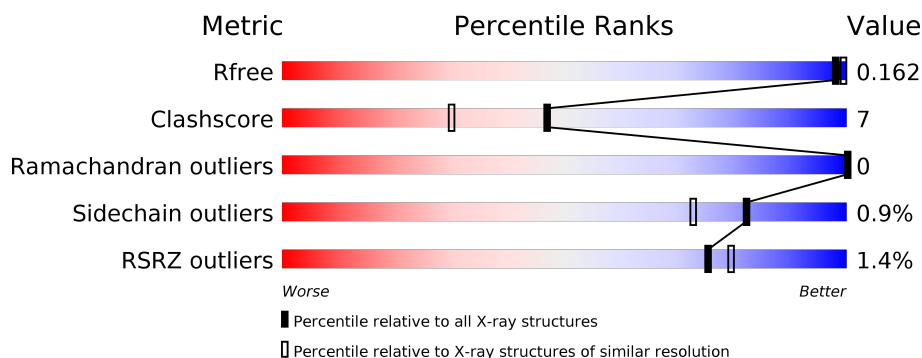
1 Overall quality at a glance

The following experimental techniques were used to determine the structure:

X-RAY DIFFRACTION

The reported resolution of this entry is 1.67 Å.

Percentile scores (ranging between 0-100) for global validation metrics of the entry are shown in the following graphic. The table shows the number of entries on which the scores are based.



Metric	Whole archive (#Entries)	Similar resolution (#Entries, resolution range(Å))
R_{free}	100719	5252 (1.70-1.66)
Clashscore	112137	5803 (1.70-1.66)
Ramachandran outliers	110173	5704 (1.70-1.66)
Sidechain outliers	110143	5703 (1.70-1.66)
RSRZ outliers	101464	5298 (1.70-1.66)

The table below summarises the geometric issues observed across the polymeric chains and their fit to the electron density. The red, orange, yellow and green segments on the lower bar indicate the fraction of residues that contain outliers for ≥ 3 , 2, 1 and 0 types of geometric quality criteria. A grey segment represents the fraction of residues that are not modelled. The numeric value for each fraction is indicated below the corresponding segment, with a dot representing fractions $\leq 5\%$. The upper red bar (where present) indicates the fraction of residues that have poor fit to the electron density. The numeric value is given above the bar.

Mol	Chain	Length	Quality of chain
1	A	252	<div> <div>2%</div> <div> <div></div> <div>73%</div> <div>12%</div> <div>•</div> <div>15%</div> </div> </div>
1	B	252	<div> <div>%</div> <div> <div></div> <div>73%</div> <div>11%</div> <div>•</div> <div>15%</div> </div> </div>

The following table lists non-polymeric compounds, carbohydrate monomers and non-standard residues in protein, DNA, RNA chains that are outliers for geometric or electron-density-fit criteria:

Mol	Type	Chain	Res	Chirality	Geometry	Clashes	Electron density
3	GOL	A	311	-	-	-	X
3	GOL	B	312	-	-	-	X

2 Entry composition

There are 4 unique types of molecules in this entry. The entry contains 3869 atoms, of which 0 are hydrogens and 0 are deuteriums.

In the tables below, the ZeroOcc column contains the number of atoms modelled with zero occupancy, the AltConf column contains the number of residues with at least one atom in alternate conformation and the Trace column contains the number of residues modelled with at most 2 atoms.

- Molecule 1 is a protein called Orotidine 5'-phosphate decarboxylase.

Mol	Chain	Residues	Atoms					ZeroOcc	AltConf	Trace
1	A	215	Total	C	N	O	S	0	13	0
			1744	1091	311	330	12			
1	B	215	Total	C	N	O	S	0	14	0
			1740	1088	306	334	12			

There are 56 discrepancies between the modelled and reference sequences:

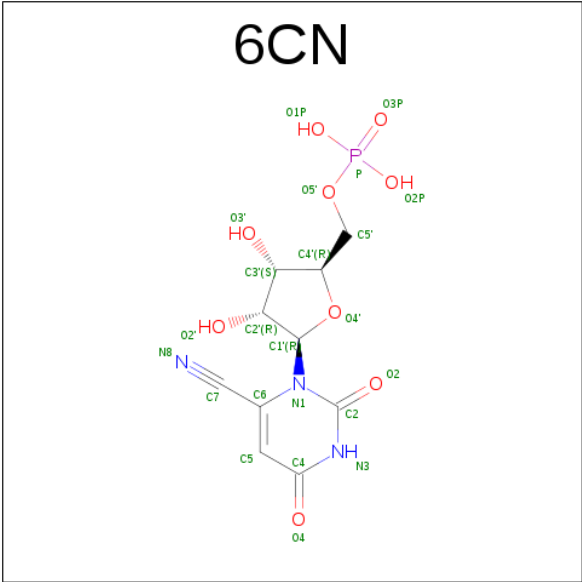
Chain	Residue	Modelled	Actual	Comment	Reference
A	-2	GLY	-	EXPRESSION TAG	UNP O26232
A	-1	SER	-	EXPRESSION TAG	UNP O26232
A	0	HIS	-	EXPRESSION TAG	UNP O26232
A	75	ASN	ASP	ENGINEERED	UNP O26232
A	101	PRO	ARG	SEE REMARK 999	UNP O26232
A	226	ARG	LEU	ENGINEERED	UNP O26232
A	227	ILE	ASN	ENGINEERED	UNP O26232
A	229	GLU	-	EXPRESSION TAG	UNP O26232
A	230	ASP	-	EXPRESSION TAG	UNP O26232
A	231	PRO	-	EXPRESSION TAG	UNP O26232
A	232	ALA	-	EXPRESSION TAG	UNP O26232
A	233	ALA	-	EXPRESSION TAG	UNP O26232
A	234	ASN	-	EXPRESSION TAG	UNP O26232
A	235	LYS	-	EXPRESSION TAG	UNP O26232
A	236	ALA	-	EXPRESSION TAG	UNP O26232
A	237	ARG	-	EXPRESSION TAG	UNP O26232
A	238	LYS	-	EXPRESSION TAG	UNP O26232
A	239	GLU	-	EXPRESSION TAG	UNP O26232
A	240	ALA	-	EXPRESSION TAG	UNP O26232
A	241	GLU	-	EXPRESSION TAG	UNP O26232
A	242	LEU	-	EXPRESSION TAG	UNP O26232
A	243	ALA	-	EXPRESSION TAG	UNP O26232
A	244	ALA	-	EXPRESSION TAG	UNP O26232
A	245	ALA	-	EXPRESSION TAG	UNP O26232
A	246	THR	-	EXPRESSION TAG	UNP O26232

Continued on next page...

Continued from previous page...

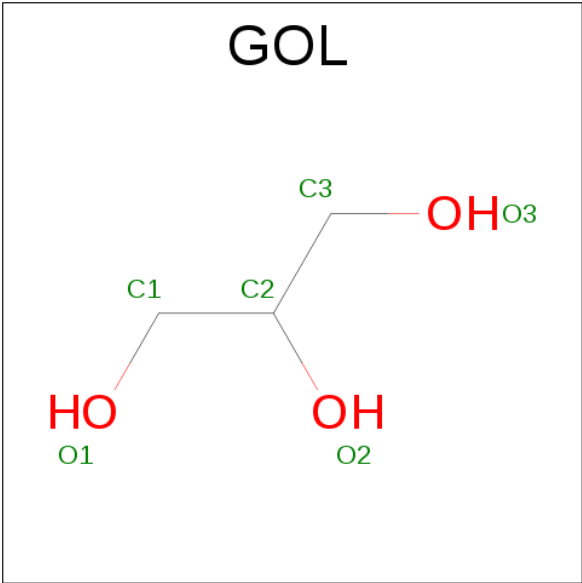
Chain	Residue	Modelled	Actual	Comment	Reference
A	247	ALA	-	EXPRESSION TAG	UNP O26232
A	248	GLU	-	EXPRESSION TAG	UNP O26232
A	249	GLN	-	EXPRESSION TAG	UNP O26232
B	-2	GLY	-	EXPRESSION TAG	UNP O26232
B	-1	SER	-	EXPRESSION TAG	UNP O26232
B	0	HIS	-	EXPRESSION TAG	UNP O26232
B	75	ASN	ASP	ENGINEERED	UNP O26232
B	101	PRO	ARG	SEE REMARK 999	UNP O26232
B	226	ARG	LEU	ENGINEERED	UNP O26232
B	227	ILE	ASN	ENGINEERED	UNP O26232
B	229	GLU	-	EXPRESSION TAG	UNP O26232
B	230	ASP	-	EXPRESSION TAG	UNP O26232
B	231	PRO	-	EXPRESSION TAG	UNP O26232
B	232	ALA	-	EXPRESSION TAG	UNP O26232
B	233	ALA	-	EXPRESSION TAG	UNP O26232
B	234	ASN	-	EXPRESSION TAG	UNP O26232
B	235	LYS	-	EXPRESSION TAG	UNP O26232
B	236	ALA	-	EXPRESSION TAG	UNP O26232
B	237	ARG	-	EXPRESSION TAG	UNP O26232
B	238	LYS	-	EXPRESSION TAG	UNP O26232
B	239	GLU	-	EXPRESSION TAG	UNP O26232
B	240	ALA	-	EXPRESSION TAG	UNP O26232
B	241	GLU	-	EXPRESSION TAG	UNP O26232
B	242	LEU	-	EXPRESSION TAG	UNP O26232
B	243	ALA	-	EXPRESSION TAG	UNP O26232
B	244	ALA	-	EXPRESSION TAG	UNP O26232
B	245	ALA	-	EXPRESSION TAG	UNP O26232
B	246	THR	-	EXPRESSION TAG	UNP O26232
B	247	ALA	-	EXPRESSION TAG	UNP O26232
B	248	GLU	-	EXPRESSION TAG	UNP O26232
B	249	GLN	-	EXPRESSION TAG	UNP O26232

- Molecule 2 is 6-CYANOURIDINE 5'-PHOSPHATE (three-letter code: 6CN) (formula: C₁₀H₁₂N₃O₉P).



Mol	Chain	Residues	Atoms					ZeroOcc	AltConf
2	A	1	Total	C	N	O	P	0	0
			21	9	2	9	1		
2	B	1	Total	C	N	O	P	0	0
			21	9	2	9	1		

- Molecule 3 is GLYCEROL (three-letter code: GOL) (formula: C₃H₈O₃).

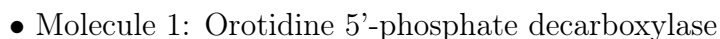


Mol	Chain	Residues	Atoms			ZeroOcc	AltConf
3	A	1	Total	C	O	0	0
			6	3	3		
3	B	1	Total	C	O	0	0
			6	3	3		

- Molecule 4 is water.

Mol	Chain	Residues	Atoms		ZeroOcc	AltConf
4	A	196	Total 196	O 196	0	1
4	B	135	Total 135	O 135	0	1

- Molecule 1: Orotidine 5'-phosphate decarboxylase



4 Data and refinement statistics

Property	Value	Source
Space group	P 1 21 1	Depositor
Cell constants a, b, c, α , β , γ	58.04Å 73.85Å 59.23Å 90.00° 119.33° 90.00°	Depositor
Resolution (Å)	23.10 – 1.67 23.10 – 1.67	Depositor EDS
% Data completeness (in resolution range)	96.2 (23.10-1.67) 96.3 (23.10-1.67)	Depositor EDS
R_{merge}	(Not available)	Depositor
R_{sym}	0.05	Depositor
$\langle I/\sigma(I) \rangle$ ¹	2.94 (at 1.67Å)	Xtriage
Refinement program	CNS 1.1	Depositor
R, R_{free}	0.158 , 0.185 0.157 , 0.162	Depositor DCC
R_{free} test set	2395 reflections (5.17%)	DCC
Wilson B-factor (Å ²)	14.1	Xtriage
Anisotropy	0.301	Xtriage
Bulk solvent k_{sol} (e/Å ³), B_{sol} (Å ²)	0.40 , 36.4	EDS
L-test for twinning ²	$\langle L \rangle = 0.51$, $\langle L^2 \rangle = 0.34$	Xtriage
Estimated twinning fraction	0.002 for -h-l,k,h 0.002 for l,k,-h-l 0.478 for h,-k,-h-l 0.008 for -h-l,-k,l 0.009 for l,-k,h	Xtriage
F_o, F_c correlation	0.97	EDS
Total number of atoms	3869	wwPDB-VP
Average B, all atoms (Å ²)	16.0	wwPDB-VP

Xtriage's analysis on translational NCS is as follows: *The largest off-origin peak in the Patterson function is 6.75% of the height of the origin peak. No significant pseudotranslation is detected.*

¹Intensities estimated from amplitudes.

²Theoretical values of $\langle |L| \rangle$, $\langle L^2 \rangle$ for acentric reflections are 0.5, 0.333 respectively for untwinned datasets, and 0.375, 0.2 for perfectly twinned datasets.

5 Model quality

5.1 Standard geometry

Bond lengths and bond angles in the following residue types are not validated in this section: GOL, 6CN

The Z score for a bond length (or angle) is the number of standard deviations the observed value is removed from the expected value. A bond length (or angle) with $|Z| > 5$ is considered an outlier worth inspection. RMSZ is the root-mean-square of all Z scores of the bond lengths (or angles).

Mol	Chain	Bond lengths		Bond angles	
		RMSZ	$\# Z > 5$	RMSZ	$\# Z > 5$
1	A	0.88	0/1768	0.88	1/2384 (0.0%)
1	B	0.89	0/1774	0.90	3/2393 (0.1%)
All	All	0.88	0/3542	0.89	4/4777 (0.1%)

Chiral center outliers are detected by calculating the chiral volume of a chiral center and verifying if the center is modelled as a planar moiety or with the opposite hand. A planarity outlier is detected by checking planarity of atoms in a peptide group, atoms in a mainchain group or atoms of a sidechain that are expected to be planar.

Mol	Chain	#Chirality outliers	#Planarity outliers
1	A	0	1
1	B	0	1
All	All	0	2

There are no bond length outliers.

All (4) bond angle outliers are listed below:

Mol	Chain	Res	Type	Atoms	Z	Observed(°)	Ideal(°)
1	B	118	ARG	NE-CZ-NH2	-7.66	116.47	120.30
1	A	157	PRO	N-CA-C	5.16	125.52	112.10
1	B	140	ASP	CB-CG-OD1	5.11	122.90	118.30
1	B	157	PRO	N-CA-C	5.09	125.34	112.10

There are no chirality outliers.

All (2) planarity outliers are listed below:

Mol	Chain	Res	Type	Group
1	A	160	ARG	Sidechain
1	B	160	ARG	Sidechain

5.2 Too-close contacts [i](#)

In the following table, the Non-H and H(model) columns list the number of non-hydrogen atoms and hydrogen atoms in the chain respectively. The H(added) column lists the number of hydrogen atoms added and optimized by MolProbity. The Clashes column lists the number of clashes within the asymmetric unit, whereas Symm-Clashes lists symmetry related clashes.

Mol	Chain	Non-H	H(model)	H(added)	Clashes	Symm-Clashes
1	A	1744	0	1742	28	0
1	B	1740	0	1718	22	0
2	A	21	0	10	0	0
2	B	21	0	10	1	0
3	A	6	0	8	0	0
3	B	6	0	8	0	0
4	A	196	0	0	3	0
4	B	135	0	0	5	0
All	All	3869	0	3496	50	0

The all-atom clashscore is defined as the number of clashes found per 1000 atoms (including hydrogen atoms). The all-atom clashscore for this structure is 7.

The worst 5 of 50 close contacts within the same asymmetric unit are listed below, sorted by their clash magnitude.

Atom-1	Atom-2	Interatomic distance (Å)	Clash overlap (Å)
1:A:118:ARG:HG3	1:A:118:ARG:HH11	1.42	0.85
1:B:81[B]:GLU:HG3	1:B:108:ALA:HB1	1.63	0.81
1:A:88:PHE:HA	1:A:118:ARG:HH12	1.53	0.73
1:A:81[B]:GLU:HG3	1:A:108:ALA:HB1	1.72	0.72
1:B:152:LYS:HE2	4:B:590:HOH:O	1.91	0.70

There are no symmetry-related clashes.

5.3 Torsion angles [i](#)

5.3.1 Protein backbone [i](#)

In the following table, the Percentiles column shows the percent Ramachandran outliers of the chain as a percentile score with respect to all X-ray entries followed by that with respect to entries of similar resolution.

The Analysed column shows the number of residues for which the backbone conformation was analysed, and the total number of residues.

Mol	Chain	Analysed	Favoured	Allowed	Outliers	Percentiles	
1	A	226/252 (90%)	220 (97%)	6 (3%)	0	100	100
1	B	227/252 (90%)	220 (97%)	7 (3%)	0	100	100
All	All	453/504 (90%)	440 (97%)	13 (3%)	0	100	100

There are no Ramachandran outliers to report.

5.3.2 Protein sidechains [i](#)

In the following table, the Percentiles column shows the percent sidechain outliers of the chain as a percentile score with respect to all X-ray entries followed by that with respect to entries of similar resolution.

The Analysed column shows the number of residues for which the sidechain conformation was analysed, and the total number of residues.

Mol	Chain	Analysed	Rotameric	Outliers	Percentiles	
1	A	182/197 (92%)	180 (99%)	2 (1%)	78	65
1	B	183/197 (93%)	182 (100%)	1 (0%)	91	86
All	All	365/394 (93%)	362 (99%)	3 (1%)	82	76

All (3) residues with a non-rotameric sidechain are listed below:

Mol	Chain	Res	Type
1	A	157	PRO
1	A	210	ASN
1	B	210	ASN

Some sidechains can be flipped to improve hydrogen bonding and reduce clashes. 5 of 6 such sidechains are listed below:

Mol	Chain	Res	Type
1	A	210	ASN
1	B	210	ASN
1	B	136	GLN
1	A	173	GLN
1	B	173	GLN

5.3.3 RNA [i](#)

There are no RNA molecules in this entry.

5.4 Non-standard residues in protein, DNA, RNA chains ⓘ

There are no non-standard protein/DNA/RNA residues in this entry.

5.5 Carbohydrates ⓘ

There are no carbohydrates in this entry.

5.6 Ligand geometry ⓘ

4 ligands are modelled in this entry.

In the following table, the Counts columns list the number of bonds (or angles) for which Mogul statistics could be retrieved, the number of bonds (or angles) that are observed in the model and the number of bonds (or angles) that are defined in the chemical component dictionary. The Link column lists molecule types, if any, to which the group is linked. The Z score for a bond length (or angle) is the number of standard deviations the observed value is removed from the expected value. A bond length (or angle) with $|Z| > 2$ is considered an outlier worth inspection. RMSZ is the root-mean-square of all Z scores of the bond lengths (or angles).

Mol	Type	Chain	Res	Link	Bond lengths			Bond angles		
					Counts	RMSZ	$\# Z > 2$	Counts	RMSZ	$\# Z > 2$
2	6CN	A	301	1	18,22,24	2.11	3 (16%)	22,33,36	2.95	3 (13%)
3	GOL	A	311	-	5,5,5	0.70	0	5,5,5	0.86	0
2	6CN	B	302	1	18,22,24	1.97	3 (16%)	22,33,36	3.47	6 (27%)
3	GOL	B	312	-	5,5,5	0.62	0	5,5,5	0.80	0

In the following table, the Chirals column lists the number of chiral outliers, the number of chiral centers analysed, the number of these observed in the model and the number defined in the chemical component dictionary. Similar counts are reported in the Torsion and Rings columns. '-' means no outliers of that kind were identified.

Mol	Type	Chain	Res	Link	Chirals	Torsions	Rings
2	6CN	A	301	1	-	0/6/26/28	0/2/2/2
3	GOL	A	311	-	-	0/4/4/4	0/0/0/0
2	6CN	B	302	1	-	0/6/26/28	0/2/2/2
3	GOL	B	312	-	-	0/4/4/4	0/0/0/0

The worst 5 of 6 bond length outliers are listed below:

Mol	Chain	Res	Type	Atoms	Z	Observed(Å)	Ideal(Å)
2	B	302	6CN	P-O5'	-2.51	1.52	1.60
2	A	301	6CN	C2'-C1'	-2.07	1.50	1.53

Continued on next page...

Continued from previous page...

Mol	Chain	Res	Type	Atoms	Z	Observed(Å)	Ideal(Å)
2	B	302	6CN	C4-N3	4.71	1.41	1.33
2	A	301	6CN	C4-N3	5.03	1.42	1.33
2	B	302	6CN	C6-N1	5.17	1.42	1.35

The worst 5 of 9 bond angle outliers are listed below:

Mol	Chain	Res	Type	Atoms	Z	Observed(°)	Ideal(°)
2	B	302	6CN	O2P-P-O1P	-3.90	91.88	107.61
2	A	301	6CN	C5-C4-N3	-2.96	116.06	123.12
2	B	302	6CN	C5-C4-N3	-2.94	116.11	123.12
2	B	302	6CN	O5'-C5'-C4'	-2.39	100.54	109.00
2	A	301	6CN	O5'-C5'-C4'	-2.03	101.78	109.00

There are no chirality outliers.

There are no torsion outliers.

There are no ring outliers.

1 monomer is involved in 1 short contact:

Mol	Chain	Res	Type	Clashes	Symm-Clashes
2	B	302	6CN	1	0

5.7 Other polymers [i](#)

There are no such residues in this entry.

5.8 Polymer linkage issues [i](#)

There are no chain breaks in this entry.

6 Fit of model and data [i](#)

6.1 Protein, DNA and RNA chains [i](#)

In the following table, the column labelled ‘#RSRZ> 2’ contains the number (and percentage) of RSRZ outliers, followed by percent RSRZ outliers for the chain as percentile scores relative to all X-ray entries and entries of similar resolution. The OWAB column contains the minimum, median, 95th percentile and maximum values of the occupancy-weighted average B-factor per residue. The column labelled ‘Q< 0.9’ lists the number of (and percentage) of residues with an average occupancy less than 0.9.

Mol	Chain	Analysed	<RSRZ>	#RSRZ>2	OWAB(Å ²)	Q<0.9
1	A	215/252 (85%)	-0.53	4 (1%) 67 71	8, 12, 31, 49	0
1	B	215/252 (85%)	-0.54	2 (0%) 84 87	8, 12, 29, 51	0
All	All	430/504 (85%)	-0.54	6 (1%) 75 79	8, 12, 31, 51	0

The worst 5 of 6 RSRZ outliers are listed below:

Mol	Chain	Res	Type	RSRZ
1	B	222	ILE	3.8
1	A	225	LEU	3.6
1	B	225	LEU	2.8
1	A	222	ILE	2.2
1	A	224	ASP	2.2

6.2 Non-standard residues in protein, DNA, RNA chains [i](#)

There are no non-standard protein/DNA/RNA residues in this entry.

6.3 Carbohydrates [i](#)

There are no carbohydrates in this entry.

6.4 Ligands [i](#)

In the following table, the Atoms column lists the number of modelled atoms in the group and the number defined in the chemical component dictionary. LLDF column lists the quality of electron density of the group with respect to its neighbouring residues in protein, DNA or RNA chains. The B-factors column lists the minimum, median, 95th percentile and maximum values of B factors of atoms in the group. The column labelled ‘Q< 0.9’ lists the number of atoms with occupancy less than 0.9.

Mol	Type	Chain	Res	Atoms	RSCC	RSR	LLDF	B-factors(\AA^2)	Q<0.9
3	GOL	B	312	6/6	0.85	0.17	8.30	25,33,37,44	0
3	GOL	A	311	6/6	0.89	0.14	7.79	24,32,36,44	0
2	6CN	B	302	21/23	0.98	0.06	-0.10	6,8,10,11	0
2	6CN	A	301	21/23	0.99	0.05	-1.05	6,8,10,11	0

6.5 Other polymers [i](#)

There are no such residues in this entry.