



Full wwPDB X-ray Structure Validation Report ⓘ

Aug 21, 2018 – 01:26 AM EDT

PDB ID : 5O7U
Title : Crystal structure of the 7-Fluorotryptophan RSL lectin in complex with Lewis x tetrasaccharide
Authors : Varrot, A.
Deposited on : 2017-06-09
Resolution : 1.15 Å(reported)

This is a Full wwPDB X-ray Structure Validation Report for a publicly released PDB entry.

We welcome your comments at validation@mail.wwpdb.org

A user guide is available at

<https://www.wwpdb.org/validation/2017/XrayValidationReportHelp>

with specific help available everywhere you see the ⓘ symbol.

The following versions of software and data (see [references ⓘ](#)) were used in the production of this report:

MolProbity : 4.02b-467
Mogul : 1.7.3 (157068), CSD as539be (2018)
Xtriage (Phenix) : 1.13
EDS : rb-20031172
Percentile statistics : 20171227.v01 (using entries in the PDB archive December 27th 2017)
Refmac : 5.8.0158
CCP4 : 7.0 (Gargrove)
Ideal geometry (proteins) : Engh & Huber (2001)
Ideal geometry (DNA, RNA) : Parkinson et al. (1996)
Validation Pipeline (wwPDB-VP) : rb-20031172

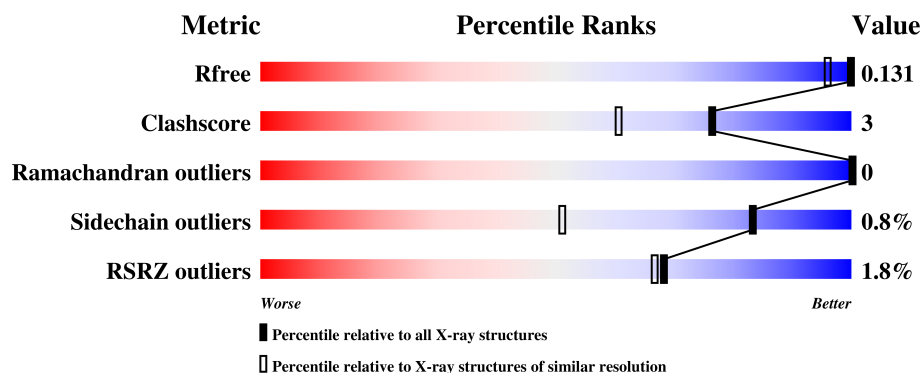
1 Overall quality at a glance

The following experimental techniques were used to determine the structure:

X-RAY DIFFRACTION

The reported resolution of this entry is 1.15 Å.

Percentile scores (ranging between 0-100) for global validation metrics of the entry are shown in the following graphic. The table shows the number of entries on which the scores are based.



Metric	Whole archive (#Entries)	Similar resolution (#Entries, resolution range(Å))
R_{free}	111664	1223 (1.18-1.10)
Clashscore	122126	1264 (1.18-1.10)
Ramachandran outliers	120053	1215 (1.18-1.10)
Sidechain outliers	120020	1212 (1.18-1.10)
RSRZ outliers	108989	1199 (1.18-1.10)

The table below summarises the geometric issues observed across the polymeric chains and their fit to the electron density. The red, orange, yellow and green segments on the lower bar indicate the fraction of residues that contain outliers for ≥ 3 , 2, 1 and 0 types of geometric quality criteria. A grey segment represents the fraction of residues that are not modelled. The numeric value for each fraction is indicated below the corresponding segment, with a dot representing fractions $\leq 5\%$. The upper red bar (where present) indicates the fraction of residues that have poor fit to the electron density. The numeric value is given above the bar.

Mol	Chain	Length	Quality of chain
1	A	90	 98%
1	B	90	 96%

2 Entry composition

There are 8 unique types of molecules in this entry. The entry contains 1953 atoms, of which 0 are hydrogens and 0 are deuteriums.

In the tables below, the ZeroOcc column contains the number of atoms modelled with zero occupancy, the AltConf column contains the number of residues with at least one atom in alternate conformation and the Trace column contains the number of residues modelled with at most 2 atoms.

- Molecule 1 is a protein called Putative fucose-binding lectin protein.

Mol	Chain	Residues	Atoms						ZeroOcc	AltConf	Trace
1	A	89	Total	C	F	N	O	S	0	3	0
			711	439	7	122	141	2			
1	B	89	Total	C	F	N	O	S	0	12	0
			776	478	8	134	154	2			

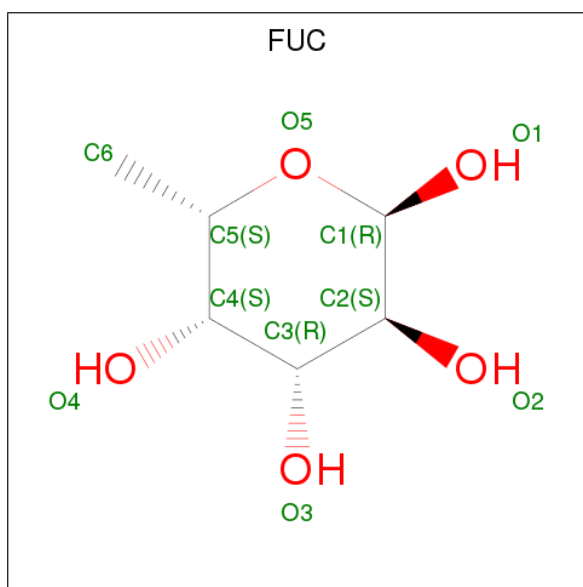
There are 14 discrepancies between the modelled and reference sequences:

Chain	Residue	Modelled	Actual	Comment	Reference
A	10	F7W	TRP	conflict	UNP D8NA05
A	31	F7W	TRP	conflict	UNP D8NA05
A	36	F7W	TRP	conflict	UNP D8NA05
A	53	F7W	TRP	conflict	UNP D8NA05
A	74	F7W	TRP	conflict	UNP D8NA05
A	76	F7W	TRP	conflict	UNP D8NA05
A	81	F7W	TRP	conflict	UNP D8NA05
B	10	F7W	TRP	conflict	UNP D8NA05
B	31	F7W	TRP	conflict	UNP D8NA05
B	36	F7W	TRP	conflict	UNP D8NA05
B	53	F7W	TRP	conflict	UNP D8NA05
B	74	F7W	TRP	conflict	UNP D8NA05
B	76	F7W	TRP	conflict	UNP D8NA05
B	81	F7W	TRP	conflict	UNP D8NA05

- Molecule 2 is MAGNESIUM ION (three-letter code: MG) (formula: Mg).

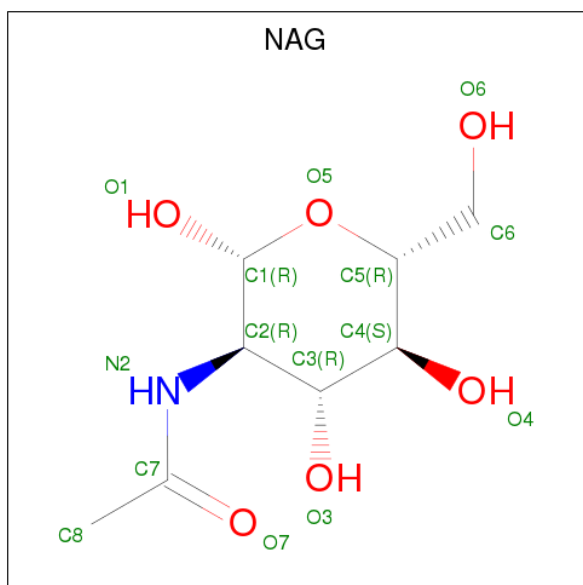
Mol	Chain	Residues	Atoms		ZeroOcc	AltConf
2	B	1	Total	Mg	0	0
			1	1		
2	A	1	Total	Mg	0	0
			1	1		

- Molecule 3 is ALPHA-L-FUCOSE (three-letter code: FUC) (formula: C₆H₁₂O₅).



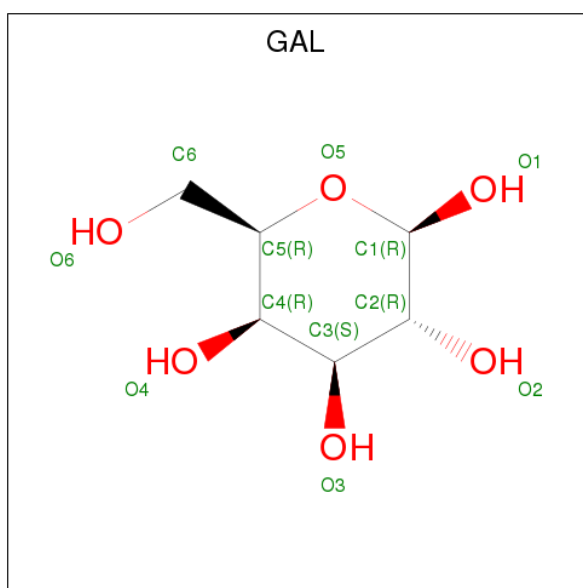
Mol	Chain	Residues	Atoms			ZeroOcc	AltConf
3	A	1	Total	C	O	0	0
			10	6	4		
3	A	1	Total	C	O	0	0
			10	6	4		
3	B	1	Total	C	O	0	0
			10	6	4		
3	B	1	Total	C	O	0	0
			10	6	4		

- Molecule 4 is N-ACETYL-D-GLUCOSAMINE (three-letter code: NAG) (formula: $C_8H_{15}NO_6$).



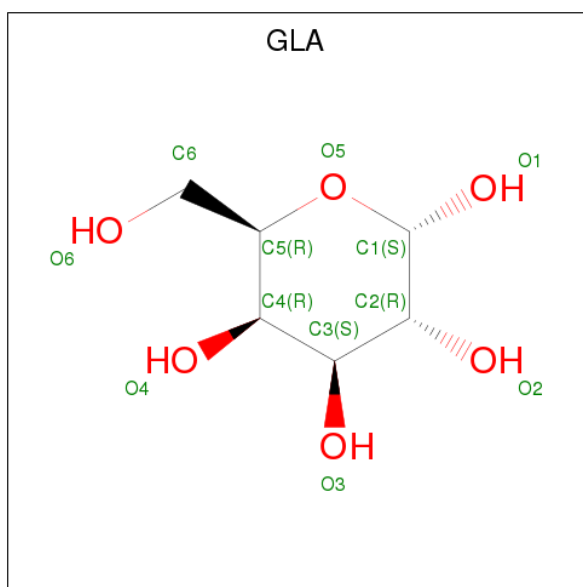
Mol	Chain	Residues	Atoms				ZeroOcc	AltConf
4	A	1	Total	C	N	O	0	0
			15	8	1	6		
4	A	1	Total	C	N	O	0	1
			15	9	1	5		
4	B	1	Total	C	N	O	0	0
			15	8	1	6		
4	B	1	Total	C	N	O	0	1
			17	10	1	6		

- Molecule 5 is BETA-D-GALACTOSE (three-letter code: GAL) (formula: C₆H₁₂O₆).



Mol	Chain	Residues	Atoms			ZeroOcc	AltConf
5	A	1	Total	C	O	0	0
			11	6	5		
5	A	1	Total	C	O	0	1
			14	8	6		
5	B	1	Total	C	O	0	0
			11	6	5		
5	B	1	Total	C	O	0	0
			12	6	6		

- Molecule 6 is ALPHA D-GALACTOSE (three-letter code: GLA) (formula: C₆H₁₂O₆).



Mol	Chain	Residues	Atoms			ZeroOcc	AltConf
6	A	1	Total	C	O	0	1
			24	12	12		

- Molecule 7 is CALCIUM ION (three-letter code: CA) (formula: Ca).

Mol	Chain	Residues	Atoms		ZeroOcc	AltConf
7	B	1	Total	Ca	0	0
			1	1		

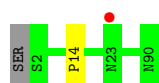
- Molecule 8 is water.

Mol	Chain	Residues	Atoms		ZeroOcc	AltConf
8	A	136	Total	O	0	7
			143	143		
8	B	143	Total	O	0	3
			146	146		

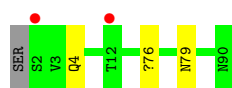
3 Residue-property plots [i](#)

These plots are drawn for all protein, RNA and DNA chains in the entry. The first graphic for a chain summarises the proportions of the various outlier classes displayed in the second graphic. The second graphic shows the sequence view annotated by issues in geometry and electron density. Residues are color-coded according to the number of geometric quality criteria for which they contain at least one outlier: green = 0, yellow = 1, orange = 2 and red = 3 or more. A red dot above a residue indicates a poor fit to the electron density ($RSRZ > 2$). Stretches of 2 or more consecutive residues without any outlier are shown as a green connector. Residues present in the sample, but not in the model, are shown in grey.

- Molecule 1: Putative fucose-binding lectin protein



- Molecule 1: Putative fucose-binding lectin protein



4 Data and refinement statistics

Property	Value	Source
Space group	F 2 3	Depositor
Cell constants a, b, c, α , β , γ	129.15Å 129.15Å 129.15Å 90.00° 90.00° 90.00°	Depositor
Resolution (Å)	32.29 – 1.15 32.29 – 1.15	Depositor EDS
% Data completeness (in resolution range)	99.9 (32.29-1.15) 99.9 (32.29-1.15)	Depositor EDS
R_{merge}	0.07	Depositor
R_{sym}	(Not available)	Depositor
$\langle I/\sigma(I) \rangle$ ¹	5.10 (at 1.15Å)	Xtriage
Refinement program	REFMAC 5.8.0158	Depositor
R, R_{free}	0.104 , 0.129 0.106 , 0.131	Depositor DCC
R_{free} test set	3140 reflections (4.98%)	wwPDB-VP
Wilson B-factor (Å ²)	8.7	Xtriage
Anisotropy	0.000	Xtriage
Bulk solvent k_{sol} (e/Å ³), B_{sol} (Å ²)	0.37 , 53.7	EDS
L-test for twinning ²	$\langle L \rangle = 0.50$, $\langle L^2 \rangle = 0.34$	Xtriage
Estimated twinning fraction	0.037 for k,h,-l	Xtriage
F_o, F_c correlation	0.98	EDS
Total number of atoms	1953	wwPDB-VP
Average B, all atoms (Å ²)	12.0	wwPDB-VP

Xtriage's analysis on translational NCS is as follows: *The analyses of the Patterson function reveals a significant off-origin peak that is 48.38 % of the origin peak, indicating pseudo-translational symmetry. The chance of finding a peak of this or larger height randomly in a structure without pseudo-translational symmetry is equal to 8.6762e-05. The detected translational NCS is most likely also responsible for the elevated intensity ratio.*

¹Intensities estimated from amplitudes.

²Theoretical values of $\langle |L| \rangle$, $\langle L^2 \rangle$ for acentric reflections are 0.5, 0.333 respectively for untwinned datasets, and 0.375, 0.2 for perfectly twinned datasets.

5 Model quality [i](#)

5.1 Standard geometry [i](#)

Bond lengths and bond angles in the following residue types are not validated in this section: MG, NAG, GLA, CA, GAL, FUC, F7W

The Z score for a bond length (or angle) is the number of standard deviations the observed value is removed from the expected value. A bond length (or angle) with $|Z| > 5$ is considered an outlier worth inspection. RMSZ is the root-mean-square of all Z scores of the bond lengths (or angles).

Mol	Chain	Bond lengths		Bond angles	
		RMSZ	# Z >5	RMSZ	# Z >5
1	A	0.56	0/606	0.72	0/813
1	B	0.57	0/655	0.75	0/876
All	All	0.57	0/1261	0.74	0/1689

There are no bond length outliers.

There are no bond angle outliers.

There are no chirality outliers.

There are no planarity outliers.

5.2 Too-close contacts [i](#)

In the following table, the Non-H and H(model) columns list the number of non-hydrogen atoms and hydrogen atoms in the chain respectively. The H(added) column lists the number of hydrogen atoms added and optimized by MolProbity. The Clashes column lists the number of clashes within the asymmetric unit, whereas Symm-Clashes lists symmetry related clashes.

Mol	Chain	Non-H	H(model)	H(added)	Clashes	Symm-Clashes
1	A	711	0	571	0	0
1	B	776	0	617	8	0
2	A	1	0	0	0	0
2	B	1	0	0	0	0
3	A	20	0	20	0	0
3	B	20	0	20	0	0
4	A	30	0	15	0	0
4	B	32	0	24	2	0
5	A	25	0	20	0	0
5	B	23	0	21	0	0
6	A	24	0	22	0	0

Continued on next page...

Continued from previous page...

Mol	Chain	Non-H	H(model)	H(added)	Clashes	Symm-Clashes
7	B	1	0	0	0	0
8	A	143	0	0	2	0
8	B	146	0	0	6	0
All	All	1953	0	1330	9	0

The all-atom clashscore is defined as the number of clashes found per 1000 atoms (including hydrogen atoms). The all-atom clashscore for this structure is 3.

All (9) close contacts within the same asymmetric unit are listed below, sorted by their clash magnitude.

Atom-1	Atom-2	Interatomic distance (Å)	Clash overlap (Å)
8:A:256:HOH:O	1:B:76[A]:F7W:CZ3	2.00	1.07
1:B:4[B]:GLN:NE2	8:B:202:HOH:O	1.60	0.86
4:B:104:NAG:H83	8:B:217:HOH:O	1.73	0.85
8:A:256:HOH:O	1:B:76[A]:F7W:CH2	2.22	0.83
1:B:4[B]:GLN:HG2	8:B:202:HOH:O	1.76	0.82
1:B:4[B]:GLN:CG	8:B:202:HOH:O	2.28	0.75
1:B:76[A]:F7W:CH2	4:B:104:NAG:H62	2.39	0.53
1:B:79[A]:ASN:OD1	8:B:203:HOH:O	2.19	0.52
1:B:4[A]:GLN:OE1	8:B:204:HOH:O	2.20	0.49

There are no symmetry-related clashes.

5.3 Torsion angles [i](#)

5.3.1 Protein backbone [i](#)

In the following table, the Percentiles column shows the percent Ramachandran outliers of the chain as a percentile score with respect to all X-ray entries followed by that with respect to entries of similar resolution.

The Analysed column shows the number of residues for which the backbone conformation was analysed, and the total number of residues.

Mol	Chain	Analysed	Favoured	Allowed	Outliers	Percentiles	
1	A	82/90 (91%)	82 (100%)	0	0	100	100
1	B	91/90 (101%)	88 (97%)	3 (3%)	0	100	100
All	All	173/180 (96%)	170 (98%)	3 (2%)	0	100	100

There are no Ramachandran outliers to report.

5.3.2 Protein sidechains ⓘ

In the following table, the Percentiles column shows the percent sidechain outliers of the chain as a percentile score with respect to all X-ray entries followed by that with respect to entries of similar resolution.

The Analysed column shows the number of residues for which the sidechain conformation was analysed, and the total number of residues.

Mol	Chain	Analysed	Rotameric	Outliers	Percentiles	
1	A	66/64 (103%)	65 (98%)	1 (2%)	67	29
1	B	71/64 (111%)	71 (100%)	0	100	100
All	All	137/128 (107%)	136 (99%)	1 (1%)	83	57

All (1) residues with a non-rotameric sidechain are listed below:

Mol	Chain	Res	Type
1	A	14	PRO

Some sidechains can be flipped to improve hydrogen bonding and reduce clashes. There are no such sidechains identified.

5.3.3 RNA ⓘ

There are no RNA molecules in this entry.

5.4 Non-standard residues in protein, DNA, RNA chains ⓘ

15 non-standard protein/DNA/RNA residues are modelled in this entry.

In the following table, the Counts columns list the number of bonds (or angles) for which Mogul statistics could be retrieved, the number of bonds (or angles) that are observed in the model and the number of bonds (or angles) that are defined in the Chemical Component Dictionary. The Link column lists molecule types, if any, to which the group is linked. The Z score for a bond length (or angle) is the number of standard deviations the observed value is removed from the expected value. A bond length (or angle) with $|Z| > 2$ is considered an outlier worth inspection. RMSZ is the root-mean-square of all Z scores of the bond lengths (or angles).

Mol	Type	Chain	Res	Link	Bond lengths			Bond angles		
					Counts	RMSZ	# Z > 2	Counts	RMSZ	# Z > 2
1	F7W	A	10	1	14,16,17	0.95	0	12,22,24	1.64	4 (33%)
1	F7W	A	31	1	14,16,17	1.01	0	12,22,24	2.48	4 (33%)
1	F7W	A	36	1	14,16,17	0.90	0	12,22,24	1.82	1 (8%)

Mol	Type	Chain	Res	Link	Bond lengths			Bond angles		
					Counts	RMSZ	# Z > 2	Counts	RMSZ	# Z > 2
1	F7W	A	53	1	14,16,17	1.06	0	12,22,24	1.14	1 (8%)
1	F7W	A	74	1	14,16,17	1.33	1 (7%)	12,22,24	2.63	3 (25%)
1	F7W	A	76	1	14,16,17	1.70	4 (28%)	12,22,24	3.13	5 (41%)
1	F7W	A	81	1	14,16,17	0.84	0	12,22,24	2.04	3 (25%)
1	F7W	B	10	1	14,16,17	0.99	0	12,22,24	1.87	2 (16%)
1	F7W	B	31	1	14,16,17	1.10	0	12,22,24	1.62	1 (8%)
1	F7W	B	36	1	14,16,17	1.05	0	12,22,24	2.11	2 (16%)
1	F7W	B	53	1	14,16,17	1.00	0	12,22,24	1.68	2 (16%)
1	F7W	B	74	1	14,16,17	1.25	2 (14%)	12,22,24	2.52	3 (25%)
1	F7W	B	76[A]	1	14,16,17	1.78	3 (21%)	12,22,24	4.48	6 (50%)
1	F7W	B	76[B]	1	14,16,17	1.87	2 (14%)	12,22,24	2.37	3 (25%)
1	F7W	B	81	1	14,16,17	1.20	1 (7%)	12,22,24	1.98	2 (16%)

In the following table, the Chirals column lists the number of chiral outliers, the number of chiral centers analysed, the number of these observed in the model and the number defined in the Chemical Component Dictionary. Similar counts are reported in the Torsion and Rings columns. '-' means no outliers of that kind were identified.

Mol	Type	Chain	Res	Link	Chirals	Torsions	Rings
1	F7W	A	10	1	-	0/3/6/8	0/2/2/2
1	F7W	A	31	1	-	0/3/6/8	0/2/2/2
1	F7W	A	36	1	-	0/3/6/8	0/2/2/2
1	F7W	A	53	1	-	0/3/6/8	0/2/2/2
1	F7W	A	74	1	-	0/3/6/8	0/2/2/2
1	F7W	A	76	1	-	0/3/6/8	0/2/2/2
1	F7W	A	81	1	-	0/3/6/8	0/2/2/2
1	F7W	B	10	1	-	0/3/6/8	0/2/2/2
1	F7W	B	31	1	-	0/3/6/8	0/2/2/2
1	F7W	B	36	1	-	0/3/6/8	0/2/2/2
1	F7W	B	53	1	-	0/3/6/8	0/2/2/2
1	F7W	B	74	1	-	0/3/6/8	0/2/2/2
1	F7W	B	76[A]	1	-	0/3/6/8	0/2/2/2
1	F7W	B	76[B]	1	-	0/3/6/8	0/2/2/2
1	F7W	B	81	1	-	0/3/6/8	0/2/2/2

All (13) bond length outliers are listed below:

Mol	Chain	Res	Type	Atoms	Z	Observed(Å)	Ideal(Å)
1	B	76[A]	F7W	CE3-CD2	-3.32	1.35	1.42

Continued on next page...

Continued from previous page...

Mol	Chain	Res	Type	Atoms	Z	Observed(Å)	Ideal(Å)
1	A	76	F7W	F1-CZ2	-2.36	1.31	1.36
1	B	74	F7W	CH2-CZ2	2.02	1.38	1.36
1	A	76	F7W	CZ3-CE3	2.26	1.41	1.36
1	B	76[A]	F7W	CD1-CG	2.31	1.43	1.37
1	B	74	F7W	CZ2-CE2	2.45	1.44	1.42
1	A	76	F7W	CH2-CZ2	2.51	1.39	1.36
1	B	76[B]	F7W	CH2-CZ2	2.59	1.39	1.36
1	B	81	F7W	CH2-CZ2	2.68	1.39	1.36
1	A	74	F7W	CH2-CZ2	2.94	1.39	1.36
1	A	76	F7W	CZ2-CE2	3.92	1.45	1.42
1	B	76[A]	F7W	CZ2-CE2	4.28	1.46	1.42
1	B	76[B]	F7W	CZ2-CE2	5.64	1.47	1.42

All (42) bond angle outliers are listed below:

Mol	Chain	Res	Type	Atoms	Z	Observed(°)	Ideal(°)
1	B	76[A]	F7W	CH2-CZ2-CE2	-12.60	116.30	123.08
1	A	76	F7W	CH2-CZ2-CE2	-8.43	118.54	123.08
1	A	74	F7W	CH2-CZ2-CE2	-7.45	119.07	123.08
1	B	74	F7W	CH2-CZ2-CE2	-7.36	119.12	123.08
1	A	31	F7W	CH2-CZ2-CE2	-6.71	119.47	123.08
1	B	76[B]	F7W	CH2-CZ2-CE2	-6.09	119.80	123.08
1	B	36	F7W	CH2-CZ2-CE2	-5.45	120.14	123.08
1	A	81	F7W	CH2-CZ2-CE2	-5.38	120.18	123.08
1	B	81	F7W	CH2-CZ2-CE2	-5.38	120.19	123.08
1	B	10	F7W	CH2-CZ2-CE2	-5.03	120.37	123.08
1	A	36	F7W	CH2-CZ2-CE2	-4.94	120.42	123.08
1	B	53	F7W	CH2-CZ2-CE2	-4.51	120.65	123.08
1	B	76[A]	F7W	CB-CG-CD2	-4.35	119.48	126.25
1	B	31	F7W	CH2-CZ2-CE2	-4.20	120.82	123.08
1	A	10	F7W	CH2-CZ2-CE2	-3.34	121.28	123.08
1	A	53	F7W	CH2-CZ2-CE2	-2.34	121.82	123.08
1	A	10	F7W	F1-CZ2-CE2	-2.26	116.47	117.42
1	A	76	F7W	CZ3-CE3-CD2	-2.18	117.89	120.89
1	A	10	F7W	CZ3-CE3-CD2	-2.18	117.90	120.89
1	A	81	F7W	CB-CG-CD2	-2.17	122.87	126.25
1	A	31	F7W	O-C-CA	-2.03	119.37	124.96
1	B	76[B]	F7W	CZ3-CH2-CZ2	2.02	121.36	118.63
1	A	31	F7W	F1-CZ2-CH2	2.02	121.65	117.97
1	B	74	F7W	CZ3-CH2-CZ2	2.12	121.49	118.63
1	B	36	F7W	F1-CZ2-CH2	2.18	121.94	117.97
1	A	76	F7W	F1-CZ2-CH2	2.25	122.08	117.97

Continued on next page...

Continued from previous page...

Mol	Chain	Res	Type	Atoms	Z	Observed(°)	Ideal(°)
1	A	76	F7W	CZ3-CH2-CZ2	2.26	121.69	118.63
1	B	81	F7W	F1-CZ2-CH2	2.27	122.10	117.97
1	A	10	F7W	F1-CZ2-CH2	2.34	122.23	117.97
1	B	76[A]	F7W	F1-CZ2-CE2	2.37	118.43	117.42
1	A	81	F7W	F1-CZ2-CH2	2.40	122.34	117.97
1	B	53	F7W	F1-CZ2-CH2	2.47	122.46	117.97
1	B	10	F7W	F1-CZ2-CH2	2.66	122.81	117.97
1	B	74	F7W	F1-CZ2-CH2	2.77	123.01	117.97
1	A	74	F7W	CZ3-CH2-CZ2	2.99	122.66	118.63
1	A	74	F7W	F1-CZ2-CH2	3.05	123.53	117.97
1	A	31	F7W	F1-CZ2-CE2	3.41	118.87	117.42
1	B	76[B]	F7W	F1-CZ2-CE2	3.55	118.93	117.42
1	B	76[A]	F7W	CZ3-CH2-CZ2	3.63	123.54	118.63
1	B	76[A]	F7W	F1-CZ2-CH2	4.00	125.26	117.97
1	B	76[A]	F7W	CB-CG-CD1	4.36	133.35	127.97
1	A	76	F7W	F1-CZ2-CE2	4.60	119.38	117.42

There are no chirality outliers.

There are no torsion outliers.

There are no ring outliers.

1 monomer is involved in 3 short contacts:

Mol	Chain	Res	Type	Clashes	Symm-Clashes
1	B	76[A]	F7W	3	0

5.5 Carbohydrates [i](#)

There are no carbohydrates in this entry.

5.6 Ligand geometry [i](#)

Of 20 ligands modelled in this entry, 3 are monoatomic - leaving 17 for Mogul analysis.

In the following table, the Counts columns list the number of bonds (or angles) for which Mogul statistics could be retrieved, the number of bonds (or angles) that are observed in the model and the number of bonds (or angles) that are defined in the Chemical Component Dictionary. The Link column lists molecule types, if any, to which the group is linked. The Z score for a bond length (or angle) is the number of standard deviations the observed value is removed from the expected value. A bond length (or angle) with $|Z| > 2$ is considered an outlier worth inspection. RMSZ is the root-mean-square of all Z scores of the bond lengths (or angles).

Mol	Type	Chain	Res	Link	Bond lengths			Bond angles		
					Counts	RMSZ	# Z > 2	Counts	RMSZ	# Z > 2
3	FUC	A	102	4	9,10,11	0.60	0	13,14,16	0.72	0
4	NAG	A	103	3,5	15,15,15	0.95	1 (6%)	21,21,21	2.06	6 (28%)
5	GAL	A	104	4	11,11,12	0.74	0	15,15,17	1.33	1 (6%)
3	FUC	A	105	4	9,10,11	0.48	0	13,14,16	0.90	0
4	NAG	A	106[A]	6	14,14,15	0.86	0	17,19,21	0.98	1 (5%)
4	NAG	A	106[B]	6	14,14,15	0.85	0	17,19,21	1.00	1 (5%)
5	GAL	A	107[A]	-	11,11,12	0.66	0	15,15,17	0.74	0
5	GAL	A	107[B]	-	11,11,12	0.59	0	15,15,17	0.68	0
6	GLA	A	108[A]	4	12,12,12	0.59	0	17,17,17	1.19	2 (11%)
6	GLA	A	108[B]	4	12,12,12	0.50	0	17,17,17	0.73	0
3	FUC	B	103	4	9,10,11	0.54	0	13,14,16	0.95	0
4	NAG	B	104	3	15,15,15	0.87	0	21,21,21	1.47	4 (19%)
3	FUC	B	105	4	9,10,11	0.33	0	13,14,16	0.93	0
4	NAG	B	106[A]	-	14,14,15	0.86	0	17,19,21	1.38	3 (17%)
4	NAG	B	106[B]	-	14,14,15	0.86	0	17,19,21	1.29	3 (17%)
5	GAL	B	107	4	11,11,12	1.09	1 (9%)	15,15,17	1.03	1 (6%)
5	GAL	B	108	4	12,12,12	0.43	0	17,17,17	0.88	0

In the following table, the Chirals column lists the number of chiral outliers, the number of chiral centers analysed, the number of these observed in the model and the number defined in the Chemical Component Dictionary. Similar counts are reported in the Torsion and Rings columns. '-' means no outliers of that kind were identified.

Mol	Type	Chain	Res	Link	Chirals	Torsions	Rings
3	FUC	A	102	4	-	0/0/17/20	0/1/1/1
4	NAG	A	103	3,5	-	0/6/26/26	0/1/1/1
5	GAL	A	104	4	-	0/2/19/22	0/1/1/1
3	FUC	A	105	4	-	0/0/17/20	0/1/1/1
4	NAG	A	106[A]	6	-	0/6/23/26	0/1/1/1
4	NAG	A	106[B]	6	-	0/6/23/26	0/1/1/1
5	GAL	A	107[A]	-	-	0/2/19/22	0/1/1/1
5	GAL	A	107[B]	-	-	0/2/19/22	0/1/1/1
6	GLA	A	108[A]	4	-	0/2/22/22	0/1/1/1
6	GLA	A	108[B]	4	-	0/2/22/22	0/1/1/1
3	FUC	B	103	4	-	0/0/17/20	0/1/1/1
4	NAG	B	104	3	-	0/6/26/26	0/1/1/1
3	FUC	B	105	4	-	0/0/17/20	0/1/1/1
4	NAG	B	106[A]	-	-	0/6/23/26	0/1/1/1
4	NAG	B	106[B]	-	-	0/6/23/26	0/1/1/1
5	GAL	B	107	4	-	0/2/19/22	0/1/1/1
5	GAL	B	108	4	-	0/2/22/22	0/1/1/1

All (2) bond length outliers are listed below:

Mol	Chain	Res	Type	Atoms	Z	Observed(Å)	Ideal(Å)
4	A	103	NAG	O5-C5	-2.31	1.38	1.44
5	B	107	GAL	O5-C1	2.15	1.47	1.43

All (22) bond angle outliers are listed below:

Mol	Chain	Res	Type	Atoms	Z	Observed(°)	Ideal(°)
4	A	103	NAG	C1-C2-N2	-5.46	104.40	110.73
4	A	103	NAG	O5-C5-C6	-4.33	95.53	106.43
4	B	104	NAG	O3-C3-C4	-2.95	103.46	110.34
5	B	107	GAL	O2-C2-C3	-2.54	105.23	110.19
6	A	108[A]	GLA	O3-C3-C2	-2.39	104.77	110.34
4	B	106[B]	NAG	O5-C1-C2	-2.05	108.69	111.52
4	B	106[A]	NAG	O5-C1-C2	-2.05	108.69	111.52
4	A	103	NAG	O1-C1-O5	-2.02	104.35	110.44
4	B	104	NAG	C1-O5-C5	2.04	117.62	113.69
4	A	103	NAG	C3-C2-N2	2.21	114.82	110.58
4	A	106[A]	NAG	O4-C4-C3	2.21	115.50	110.34
4	A	106[B]	NAG	O4-C4-C3	2.21	115.50	110.34
6	A	108[A]	GLA	O3-C3-C4	2.21	115.50	110.34
4	B	106[B]	NAG	C3-C4-C5	2.35	114.44	110.24
5	A	104	GAL	O2-C2-C1	2.36	113.93	109.17
4	B	104	NAG	C3-C4-C5	2.63	114.95	110.24
4	B	104	NAG	C4-C3-C2	2.85	114.55	110.33
4	B	106[A]	NAG	O5-C5-C6	2.86	111.67	107.15
4	B	106[B]	NAG	O4-C4-C3	2.96	117.25	110.34
4	B	106[A]	NAG	O4-C4-C3	2.96	117.25	110.34
4	A	103	NAG	O4-C4-C5	3.02	116.87	109.31
4	A	103	NAG	O3-C3-C2	3.53	116.73	109.62

There are no chirality outliers.

There are no torsion outliers.

There are no ring outliers.

1 monomer is involved in 2 short contacts:

Mol	Chain	Res	Type	Clashes	Symm-Clashes
4	B	104	NAG	2	0

5.7 Other polymers [i](#)

There are no such residues in this entry.

5.8 Polymer linkage issues [i](#)

There are no chain breaks in this entry.

6 Fit of model and data [i](#)

6.1 Protein, DNA and RNA chains [i](#)

In the following table, the column labelled ‘#RSRZ> 2’ contains the number (and percentage) of RSRZ outliers, followed by percent RSRZ outliers for the chain as percentile scores relative to all X-ray entries and entries of similar resolution. The OWAB column contains the minimum, median, 95th percentile and maximum values of the occupancy-weighted average B-factor per residue. The column labelled ‘Q< 0.9’ lists the number of (and percentage) of residues with an average occupancy less than 0.9.

Mol	Chain	Analysed	<RSRZ>	#RSRZ>2	OWAB(Å ²)	Q<0.9
1	A	82/90 (91%)	-0.14	1 (1%) 79 76	6, 9, 16, 20	1 (1%)
1	B	82/90 (91%)	0.01	2 (2%) 59 57	6, 10, 16, 21	0
All	All	164/180 (91%)	-0.07	3 (1%) 68 67	6, 9, 17, 21	1 (0%)

All (3) RSRZ outliers are listed below:

Mol	Chain	Res	Type	RSRZ
1	B	2	SER	4.4
1	A	23[A]	ASN	3.0
1	B	12	THR	2.2

6.2 Non-standard residues in protein, DNA, RNA chains [i](#)

In the following table, the Atoms column lists the number of modelled atoms in the group and the number defined in the chemical component dictionary. The B-factors column lists the minimum, median, 95th percentile and maximum values of B factors of atoms in the group. The column labelled ‘Q< 0.9’ lists the number of atoms with occupancy less than 0.9.

Mol	Type	Chain	Res	Atoms	RSCC	RSR	B-factors(Å ²)	Q<0.9
1	F7W	B	76[A]	15/16	0.97	0.09	6,11,14,15	15
1	F7W	B	76[B]	15/16	0.97	0.09	7,8,9,14	15
1	F7W	B	10	15/16	0.98	0.05	7,8,9,10	0
1	F7W	A	76	15/16	0.98	0.06	7,9,13,17	0
1	F7W	A	10	15/16	0.98	0.05	6,7,8,9	0
1	F7W	A	74	15/16	0.98	0.06	6,7,14,15	0
1	F7W	A	36	15/16	0.99	0.06	6,6,6,7	0
1	F7W	A	81	15/16	0.99	0.05	7,8,9,9	0
1	F7W	B	53	15/16	0.99	0.05	6,8,8,10	0
1	F7W	B	36	15/16	0.99	0.05	6,6,6,7	0
1	F7W	B	74	15/16	0.99	0.05	6,7,11,11	0

Continued on next page...

Continued from previous page...

Mol	Type	Chain	Res	Atoms	RSCC	RSR	B-factors(\AA^2)	Q<0.9
1	F7W	A	31	15/16	0.99	0.04	6,7,7,9	0
1	F7W	B	31	15/16	0.99	0.05	6,8,10,12	0
1	F7W	B	81	15/16	0.99	0.05	7,7,8,9	0
1	F7W	A	53	15/16	0.99	0.05	6,7,8,8	0

6.3 Carbohydrates

There are no carbohydrates in this entry.

6.4 Ligands

In the following table, the Atoms column lists the number of modelled atoms in the group and the number defined in the chemical component dictionary. The B-factors column lists the minimum, median, 95th percentile and maximum values of B factors of atoms in the group. The column labelled 'Q< 0.9' lists the number of atoms with occupancy less than 0.9.

Mol	Type	Chain	Res	Atoms	RSCC	RSR	B-factors(\AA^2)	Q<0.9
5	GAL	A	104	11/12	0.81	0.14	16,22,27,30	11
4	NAG	B	104	15/15	0.87	0.16	12,21,25,27	1
5	GAL	B	108	12/12	0.90	0.13	12,15,21,27	12
6	GLA	A	108[B]	12/12	0.94	0.14	11,19,23,25	12
6	GLA	A	108[A]	12/12	0.94	0.14	10,18,23,24	12
4	NAG	A	103	15/15	0.95	0.09	9,15,22,27	13
4	NAG	B	106[B]	14/15	0.96	0.12	7,11,12,16	3
4	NAG	B	106[A]	14/15	0.96	0.12	7,11,14,16	3
5	GAL	B	107	11/12	0.96	0.11	9,12,14,15	0
4	NAG	A	106[A]	14/15	0.98	0.05	7,9,12,13	1
5	GAL	A	107[B]	11/12	0.98	0.09	9,9,12,14	3
4	NAG	A	106[B]	14/15	0.98	0.05	7,9,12,13	1
5	GAL	A	107[A]	11/12	0.98	0.09	9,9,12,14	3
3	FUC	B	103	10/11	0.99	0.05	9,9,10,11	0
3	FUC	A	102	10/11	0.99	0.06	8,8,9,9	0
3	FUC	A	105	10/11	0.99	0.05	6,6,7,7	0
3	FUC	B	105	10/11	0.99	0.06	7,7,7,8	0
2	MG	B	102	1/1	0.99	0.24	18,18,18,18	0
2	MG	A	101	1/1	1.00	0.27	17,17,17,17	0
7	CA	B	101	1/1	1.00	0.03	7,7,7,7	0

6.5 Other polymers [i](#)

There are no such residues in this entry.