



wwPDB X-ray Structure Validation Summary Report ⓘ

Mar 14, 2018 – 02:25 pm GMT

PDB ID : 4RTL
Title : Complex of Escherichia coli DNA Adenine Methyltransferase (DAM) with Sinefungin and with DNA Containing Distal Pap Regulon Sequence
Authors : Horton, J.R.; Cheng, X.
Deposited on : 2014-11-15
Resolution : 2.19 Å(reported)

This is a wwPDB X-ray Structure Validation Summary Report for a publicly released PDB entry.

We welcome your comments at validation@mail.wwpdb.org

A user guide is available at

<https://www.wwpdb.org/validation/2017/XrayValidationReportHelp>

with specific help available everywhere you see the ⓘ symbol.

The following versions of software and data (see [references ⓘ](#)) were used in the production of this report:

MolProbity : 4.02b-467
Mogul : 1.7.3 (157068), CSD as539be (2018)
Xtriage (Phenix) : 1.13
EDS : trunk31020
Percentile statistics : 20171227.v01 (using entries in the PDB archive December 27th 2017)
Refmac : 5.8.0158
CCP4 : 7.0 (Gargrove)
Ideal geometry (proteins) : Engh & Huber (2001)
Ideal geometry (DNA, RNA) : Parkinson et al. (1996)
Validation Pipeline (wwPDB-VP) : trunk31020

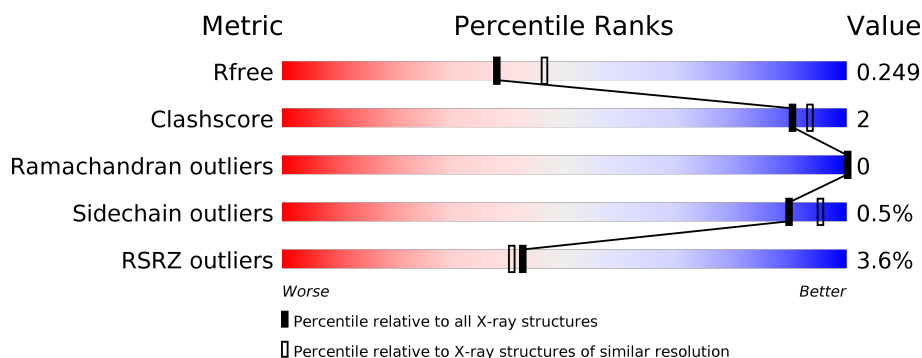
1 Overall quality at a glance

The following experimental techniques were used to determine the structure:

X-RAY DIFFRACTION

The reported resolution of this entry is 2.19 Å.

Percentile scores (ranging between 0-100) for global validation metrics of the entry are shown in the following graphic. The table shows the number of entries on which the scores are based.



Metric	Whole archive (#Entries)	Similar resolution (#Entries, resolution range(Å))
R_{free}	111664	4343 (2.20-2.20)
Clashscore	122126	5027 (2.20-2.20)
Ramachandran outliers	120053	4952 (2.20-2.20)
Sidechain outliers	120020	4953 (2.20-2.20)
RSRZ outliers	108989	4245 (2.20-2.20)

The table below summarises the geometric issues observed across the polymeric chains and their fit to the electron density. The red, orange, yellow and green segments on the lower bar indicate the fraction of residues that contain outliers for ≥ 3 , 2, 1 and 0 types of geometric quality criteria. A grey segment represents the fraction of residues that are not modelled. The numeric value for each fraction is indicated below the corresponding segment, with a dot representing fractions $\leq 5\%$. The upper red bar (where present) indicates the fraction of residues that have poor fit to the electron density. The numeric value is given above the bar.

Mol	Chain	Length	Quality of chain
1	A	298	<div> <div>3%</div> <div> <div></div> <div>83%</div> <div>15%</div> </div> </div>
2	F	11	<div> <div>91%</div> <div>9%</div> </div>
3	G	11	<div> <div>64%</div> <div>36%</div> </div>

2 Entry composition [i](#)

There are 5 unique types of molecules in this entry. The entry contains 2602 atoms, of which 0 are hydrogens and 0 are deuteriums.

In the tables below, the ZeroOcc column contains the number of atoms modelled with zero occupancy, the AltConf column contains the number of residues with at least one atom in alternate conformation and the Trace column contains the number of residues modelled with at most 2 atoms.

- Molecule 1 is a protein called DNA adenine methylase.

Mol	Chain	Residues	Atoms					ZeroOcc	AltConf	Trace
1	A	254	Total	C	N	O	S	0	2	0
			2042	1319	338	377	8			

There are 21 discrepancies between the modelled and reference sequences:

Chain	Residue	Modelled	Actual	Comment	Reference
A	-19	MET	-	EXPRESSION TAG	UNP H0Q7C9
A	-18	GLY	-	EXPRESSION TAG	UNP H0Q7C9
A	-17	SER	-	EXPRESSION TAG	UNP H0Q7C9
A	-16	SER	-	EXPRESSION TAG	UNP H0Q7C9
A	-15	HIS	-	EXPRESSION TAG	UNP H0Q7C9
A	-14	HIS	-	EXPRESSION TAG	UNP H0Q7C9
A	-13	HIS	-	EXPRESSION TAG	UNP H0Q7C9
A	-12	HIS	-	EXPRESSION TAG	UNP H0Q7C9
A	-11	HIS	-	EXPRESSION TAG	UNP H0Q7C9
A	-10	HIS	-	EXPRESSION TAG	UNP H0Q7C9
A	-9	SER	-	EXPRESSION TAG	UNP H0Q7C9
A	-8	SER	-	EXPRESSION TAG	UNP H0Q7C9
A	-7	GLY	-	EXPRESSION TAG	UNP H0Q7C9
A	-6	LEU	-	EXPRESSION TAG	UNP H0Q7C9
A	-5	VAL	-	EXPRESSION TAG	UNP H0Q7C9
A	-4	PRO	-	EXPRESSION TAG	UNP H0Q7C9
A	-3	ARG	-	EXPRESSION TAG	UNP H0Q7C9
A	-2	GLY	-	EXPRESSION TAG	UNP H0Q7C9
A	-1	SER	-	EXPRESSION TAG	UNP H0Q7C9
A	0	HIS	-	EXPRESSION TAG	UNP H0Q7C9
A	175	SER	ALA	SEE REMARK 999	UNP H0Q7C9

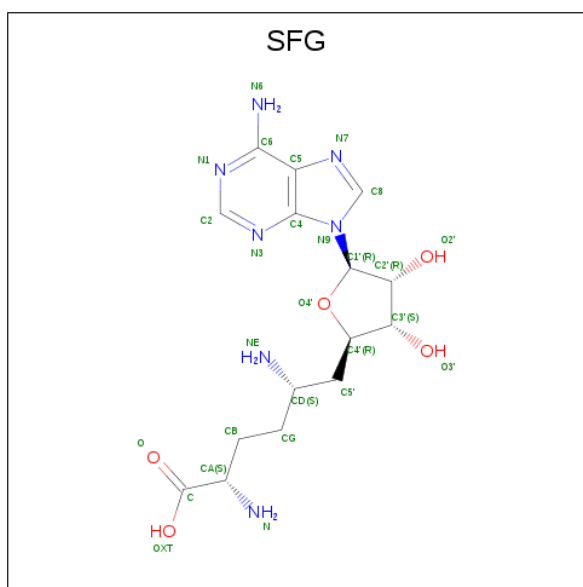
- Molecule 2 is a DNA chain called DNA (5'-D(*TP*CP*TP*AP*AP*AP*GP*AP*TP*CP*G)-3').

Mol	Chain	Residues	Atoms					ZeroOcc	AltConf	Trace
2	F	11	Total	C	N	O	P	0	0	0
			223	108	42	63	10			

- Molecule 3 is a DNA chain called DNA (5'-D(*AP*CP*GP*AP*TP*CP*TP*TP*TP*AP*G)-3').

Mol	Chain	Residues	Atoms					ZeroOcc	AltConf	Trace
3	G	11	Total 222	C 108	N 39	O 65	P 10	0	0	0

- Molecule 4 is SINEFUNGIN (three-letter code: SFG) (formula: $C_{15}H_{23}N_7O_5$).



Mol	Chain	Residues	Atoms				ZeroOcc	AltConf
4	A	1	Total	C	N	O	0	0
			27	15	7	5		

- Molecule 5 is water.

Mol	Chain	Residues	Atoms	ZeroOcc	AltConf
5	A	79	Total O 79 79	0	0
5	F	8	Total O 8 8	0	0
5	G	1	Total O 1 1	0	0

4 Data and refinement statistics

Property	Value	Source
Space group	P 21 21 21	Depositor
Cell constants a, b, c, α , β , γ	38.33Å 66.30Å 149.24Å 90.00° 90.00° 90.00°	Depositor
Resolution (Å)	27.60 – 2.19 27.61 – 2.19	Depositor EDS
% Data completeness (in resolution range)	99.0 (27.60-2.19) 96.7 (27.61-2.19)	Depositor EDS
R_{merge}	0.06	Depositor
R_{sym}	(Not available)	Depositor
$\langle I/\sigma(I) \rangle$ ¹	4.91 (at 2.20Å)	Xtriage
Refinement program	PHENIX (phenix.refine: 1.9_1692)	Depositor
R, R_{free}	0.204 , 0.253 0.207 , 0.249	Depositor DCC
R_{free} test set	1004 reflections (5.00%)	wwPDB-VP
Wilson B-factor (Å ²)	38.5	Xtriage
Anisotropy	0.116	Xtriage
Bulk solvent k_{sol} (e/Å ³), B_{sol} (Å ²)	0.29 , 82.8	EDS
L-test for twinning ²	$\langle L \rangle = 0.49$, $\langle L^2 \rangle = 0.33$	Xtriage
Estimated twinning fraction	No twinning to report.	Xtriage
F_o, F_c correlation	0.95	EDS
Total number of atoms	2602	wwPDB-VP
Average B, all atoms (Å ²)	47.0	wwPDB-VP

Xtriage's analysis on translational NCS is as follows: *The largest off-origin peak in the Patterson function is 5.75% of the height of the origin peak. No significant pseudotranslation is detected.*

¹Intensities estimated from amplitudes.

²Theoretical values of $\langle |L| \rangle$, $\langle L^2 \rangle$ for acentric reflections are 0.5, 0.333 respectively for untwinned datasets, and 0.375, 0.2 for perfectly twinned datasets.

5 Model quality [i](#)

5.1 Standard geometry [i](#)

Bond lengths and bond angles in the following residue types are not validated in this section: SFG

The Z score for a bond length (or angle) is the number of standard deviations the observed value is removed from the expected value. A bond length (or angle) with $|Z| > 5$ is considered an outlier worth inspection. RMSZ is the root-mean-square of all Z scores of the bond lengths (or angles).

Mol	Chain	Bond lengths		Bond angles	
		RMSZ	$\# Z > 5$	RMSZ	$\# Z > 5$
1	A	0.65	3/2103 (0.1%)	0.58	0/2858
2	F	0.90	0/250	0.90	0/384
3	G	0.90	0/248	0.97	0/381
All	All	0.71	3/2601 (0.1%)	0.67	0/3623

All (3) bond length outliers are listed below:

Mol	Chain	Res	Type	Atoms	Z	Observed(Å)	Ideal(Å)
1	A	174[A]	ASP	CA-C	7.01	1.71	1.52
1	A	174[B]	ASP	CA-C	7.01	1.71	1.52
1	A	141	PRO	N-CD	5.11	1.54	1.47

There are no bond angle outliers.

There are no chirality outliers.

There are no planarity outliers.

5.2 Too-close contacts [i](#)

In the following table, the Non-H and H(model) columns list the number of non-hydrogen atoms and hydrogen atoms in the chain respectively. The H(added) column lists the number of hydrogen atoms added and optimized by MolProbity. The Clashes column lists the number of clashes within the asymmetric unit, whereas Symm-Clashes lists symmetry related clashes.

Mol	Chain	Non-H	H(model)	H(added)	Clashes	Symm-Clashes
1	A	2042	0	1917	5	0
2	F	223	0	126	1	0
3	G	222	0	127	4	0
4	A	27	0	22	0	0
5	A	79	0	0	0	0

Continued on next page...

Continued from previous page...

Mol	Chain	Non-H	H(model)	H(added)	Clashes	Symm-Clashes
5	F	8	0	0	0	0
5	G	1	0	0	0	0
All	All	2602	0	2192	9	0

The all-atom clashscore is defined as the number of clashes found per 1000 atoms (including hydrogen atoms). The all-atom clashscore for this structure is 2.

The worst 5 of 9 close contacts within the same asymmetric unit are listed below, sorted by their clash magnitude.

Atom-1	Atom-2	Interatomic distance (Å)	Clash overlap (Å)
3:G:6:DC:H2''	3:G:7:DT:H5''	1.63	0.81
3:G:5:DT:H2''	3:G:6:DC:H5''	1.78	0.63
1:A:259:LYS:HG3	1:A:260:LYS:H	1.66	0.60
1:A:259:LYS:HG3	1:A:260:LYS:N	2.17	0.59
1:A:29:GLU:HB2	1:A:175:SER:OG	2.02	0.59

There are no symmetry-related clashes.

5.3 Torsion angles [i](#)

5.3.1 Protein backbone [i](#)

In the following table, the Percentiles column shows the percent Ramachandran outliers of the chain as a percentile score with respect to all X-ray entries followed by that with respect to entries of similar resolution.

The Analysed column shows the number of residues for which the backbone conformation was analysed, and the total number of residues.

Mol	Chain	Analysed	Favoured	Allowed	Outliers	Percentiles
1	A	250/298 (84%)	243 (97%)	7 (3%)	0	100 100

There are no Ramachandran outliers to report.

5.3.2 Protein sidechains [i](#)

In the following table, the Percentiles column shows the percent sidechain outliers of the chain as a percentile score with respect to all X-ray entries followed by that with respect to entries of similar resolution.

The Analysed column shows the number of residues for which the sidechain conformation was analysed, and the total number of residues.

Mol	Chain	Analysed	Rotameric	Outliers	Percentiles	
1	A	209/257 (81%)	207 (99%)	2 (1%)	78	88

All (2) residues with a non-rotameric sidechain are listed below:

Mol	Chain	Res	Type
1	A	174[A]	ASP
1	A	174[B]	ASP

Some sidechains can be flipped to improve hydrogen bonding and reduce clashes. There are no such sidechains identified.

5.3.3 RNA [i](#)

There are no RNA molecules in this entry.

5.4 Non-standard residues in protein, DNA, RNA chains [i](#)

There are no non-standard protein/DNA/RNA residues in this entry.

5.5 Carbohydrates [i](#)

There are no carbohydrates in this entry.

5.6 Ligand geometry [i](#)

1 ligand is modelled in this entry.

In the following table, the Counts columns list the number of bonds (or angles) for which Mogul statistics could be retrieved, the number of bonds (or angles) that are observed in the model and the number of bonds (or angles) that are defined in the Chemical Component Dictionary. The Link column lists molecule types, if any, to which the group is linked. The Z score for a bond length (or angle) is the number of standard deviations the observed value is removed from the expected value. A bond length (or angle) with $|Z| > 2$ is considered an outlier worth inspection. RMSZ is the root-mean-square of all Z scores of the bond lengths (or angles).

Mol	Type	Chain	Res	Link	Bond lengths			Bond angles		
					Counts	RMSZ	$\# Z > 2$	Counts	RMSZ	$\# Z > 2$
4	SFG	A	301	-	21,29,29	3.86	10 (47%)	17,42,42	3.20	5 (29%)

In the following table, the Chirals column lists the number of chiral outliers, the number of chiral centers analysed, the number of these observed in the model and the number defined in the Chemical Component Dictionary. Similar counts are reported in the Torsion and Rings columns. '-' means no outliers of that kind were identified.

Mol	Type	Chain	Res	Link	Chirals	Torsions	Rings
4	SFG	A	301	-	-	0/9/33/33	0/3/3/3

The worst 5 of 10 bond length outliers are listed below:

Mol	Chain	Res	Type	Atoms	Z	Observed(Å)	Ideal(Å)
4	A	301	SFG	O4'-C4'	-6.09	1.31	1.45
4	A	301	SFG	C5-C4	-2.62	1.34	1.40
4	A	301	SFG	O3'-C3'	-2.25	1.37	1.43
4	A	301	SFG	CG-CD	-2.14	1.50	1.53
4	A	301	SFG	C6-N6	2.48	1.44	1.34

All (5) bond angle outliers are listed below:

Mol	Chain	Res	Type	Atoms	Z	Observed(°)	Ideal(°)
4	A	301	SFG	N3-C2-N1	-10.00	120.31	128.86
4	A	301	SFG	N6-C6-N1	-5.12	107.94	118.57
4	A	301	SFG	C4-C5-N7	-2.32	107.16	109.41
4	A	301	SFG	C4'-O4'-C1'	-2.25	107.48	109.83
4	A	301	SFG	C5-C6-N6	5.44	131.55	120.47

There are no chirality outliers.

There are no torsion outliers.

There are no ring outliers.

No monomer is involved in short contacts.

5.7 Other polymers

There are no such residues in this entry.

5.8 Polymer linkage issues

There are no chain breaks in this entry.

6 Fit of model and data [i](#)

6.1 Protein, DNA and RNA chains [i](#)

In the following table, the column labelled ‘#RSRZ> 2’ contains the number (and percentage) of RSRZ outliers, followed by percent RSRZ outliers for the chain as percentile scores relative to all X-ray entries and entries of similar resolution. The OWAB column contains the minimum, median, 95th percentile and maximum values of the occupancy-weighted average B-factor per residue. The column labelled ‘Q< 0.9’ lists the number of (and percentage) of residues with an average occupancy less than 0.9.

Mol	Chain	Analysed	<RSRZ>	#RSRZ>2	OWAB(Å ²)	Q<0.9
1	A	254/298 (85%)	0.14	10 (3%) 39 37	25, 42, 78, 127	0
2	F	11/11 (100%)	-0.29	0 100 100	36, 56, 62, 66	0
3	G	11/11 (100%)	-0.16	0 100 100	40, 53, 65, 82	0
All	All	276/320 (86%)	0.11	10 (3%) 42 41	25, 44, 78, 127	0

The worst 5 of 10 RSRZ outliers are listed below:

Mol	Chain	Res	Type	RSRZ
1	A	199	ASN	4.8
1	A	189	ALA	3.8
1	A	251	ILE	2.5
1	A	36	VAL	2.5
1	A	15	TYR	2.5

6.2 Non-standard residues in protein, DNA, RNA chains [i](#)

There are no non-standard protein/DNA/RNA residues in this entry.

6.3 Carbohydrates [i](#)

There are no carbohydrates in this entry.

6.4 Ligands [i](#)

In the following table, the Atoms column lists the number of modelled atoms in the group and the number defined in the chemical component dictionary. The B-factors column lists the minimum, median, 95th percentile and maximum values of B factors of atoms in the group. The column labelled ‘Q< 0.9’ lists the number of atoms with occupancy less than 0.9.

Mol	Type	Chain	Res	Atoms	RSCC	RSR	B-factors(\AA^2)	Q<0.9
4	SFG	A	301	27/27	0.91	0.15	21,31,43,49	0

6.5 Other polymers [i](#)

There are no such residues in this entry.