



# Full wwPDB X-ray Structure Validation Report ⓘ

Oct 15, 2018 – 11:43 AM EDT

PDB ID : 6A1G  
Title : Crystal structure of human DYRK1A in complex with compound 32  
Authors : Baba, D.; Hanzawa, H.  
Deposited on : 2018-06-07  
Resolution : 2.15 Å(reported)

This is a Full wwPDB X-ray Structure Validation Report for a publicly released PDB entry.

We welcome your comments at [validation@mail.wwpdb.org](mailto:validation@mail.wwpdb.org)

A user guide is available at

<https://www.wwpdb.org/validation/2017/XrayValidationReportHelp>

with specific help available everywhere you see the ⓘ symbol.

---

The following versions of software and data (see [references ⓘ](#)) were used in the production of this report:

MolProbity : 4.02b-467  
Mogul : 1.7.3 (157068), CSD as539be (2018)  
Xtriage (Phenix) : 1.13  
EDS : rb-20031633  
Percentile statistics : 20171227.v01 (using entries in the PDB archive December 27th 2017)  
Refmac : 5.8.0158  
CCP4 : 7.0 (Gargrove)  
Ideal geometry (proteins) : Engh & Huber (2001)  
Ideal geometry (DNA, RNA) : Parkinson et al. (1996)  
Validation Pipeline (wwPDB-VP) : rb-20031633

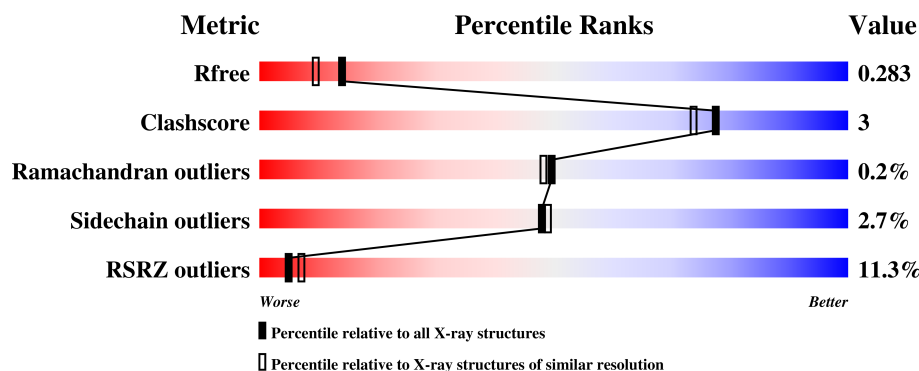
# 1 Overall quality at a glance

The following experimental techniques were used to determine the structure:

*X-RAY DIFFRACTION*

The reported resolution of this entry is 2.15 Å.

Percentile scores (ranging between 0-100) for global validation metrics of the entry are shown in the following graphic. The table shows the number of entries on which the scores are based.



Metric	Whole archive (#Entries)	Similar resolution (#Entries, resolution range(Å))
$R_{free}$	111664	1287 (2.16-2.16)
Clashscore	122126	1390 (2.16-2.16)
Ramachandran outliers	120053	1368 (2.16-2.16)
Sidechain outliers	120020	1367 (2.16-2.16)
RSRZ outliers	108989	1262 (2.16-2.16)

The table below summarises the geometric issues observed across the polymeric chains and their fit to the electron density. The red, orange, yellow and green segments on the lower bar indicate the fraction of residues that contain outliers for  $\geq 3$ , 2, 1 and 0 types of geometric quality criteria. A grey segment represents the fraction of residues that are not modelled. The numeric value for each fraction is indicated below the corresponding segment, with a dot representing fractions  $\leq 5\%$ . The upper red bar (where present) indicates the fraction of residues that have poor fit to the electron density. The numeric value is given above the bar.

Mol	Chain	Length	Quality of chain
1	A	360	<div> <div>9%</div> <div>84%</div> <div>9%</div> <div>6%</div> </div>
1	B	360	<div> <div>12%</div> <div>84%</div> <div>9%</div> <div>6%</div> </div>

## 2 Entry composition [i](#)

There are 3 unique types of molecules in this entry. The entry contains 5735 atoms, of which 0 are hydrogens and 0 are deuteriums.

In the tables below, the ZeroOcc column contains the number of atoms modelled with zero occupancy, the AltConf column contains the number of residues with at least one atom in alternate conformation and the Trace column contains the number of residues modelled with at most 2 atoms.

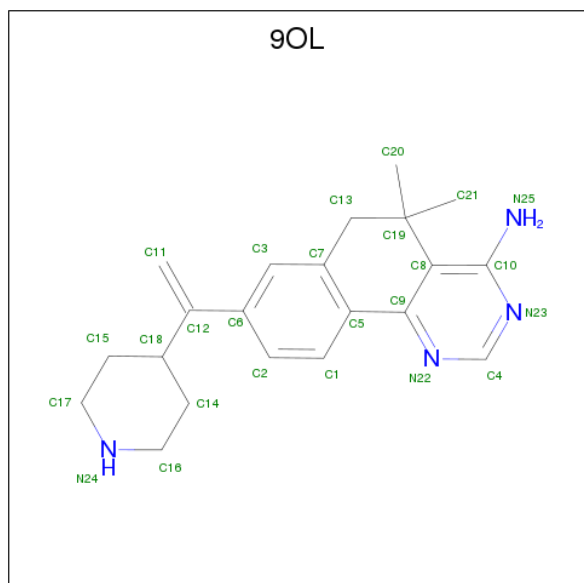
- Molecule 1 is a protein called Dual specificity tyrosine-phosphorylation-regulated kinase 1A.

Mol	Chain	Residues	Atoms						ZeroOcc	AltConf	Trace
1	A	338	Total	C	N	O	P	S	0	0	0
			2766	1780	472	496	1	17			
1	B	338	Total	C	N	O	P	S	0	0	0
			2768	1783	473	494	1	17			

There are 6 discrepancies between the modelled and reference sequences:

Chain	Residue	Modelled	Actual	Comment	Reference
A	124	GLY	-	expression tag	UNP Q13627
A	125	PRO	-	expression tag	UNP Q13627
A	126	MET	-	expression tag	UNP Q13627
B	124	GLY	-	expression tag	UNP Q13627
B	125	PRO	-	expression tag	UNP Q13627
B	126	MET	-	expression tag	UNP Q13627

- Molecule 2 is 5,5-dimethyl-8-[1-(piperidin-4-yl)ethenyl]-5,6-dihydrobenzo[h]quinazolin-4-amine (three-letter code: 9OL) (formula: C<sub>21</sub>H<sub>26</sub>N<sub>4</sub>).



Mol	Chain	Residues	Atoms			ZeroOcc	AltConf
2	A	1	Total	C	N	0	0
			25	21	4		
2	B	1	Total	C	N	0	0
			25	21	4		

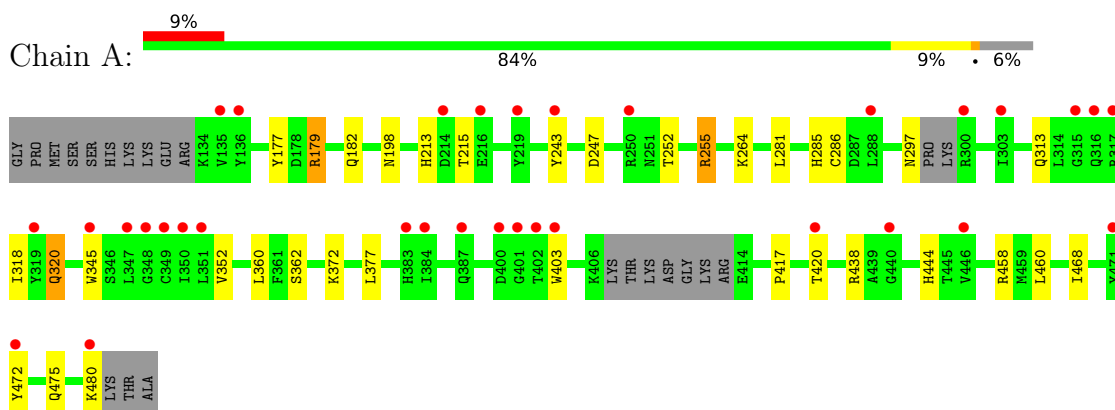
- Molecule 3 is water.

Mol	Chain	Residues	Atoms		ZeroOcc	AltConf
3	A	78	Total	O	0	0
			78	78		
3	B	73	Total	O	0	0
			73	73		

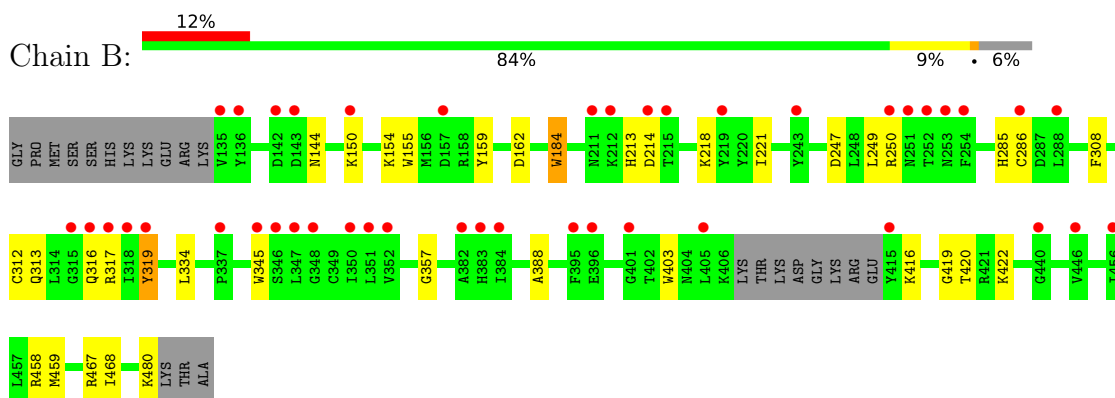
### 3 Residue-property plots [i](#)

These plots are drawn for all protein, RNA and DNA chains in the entry. The first graphic for a chain summarises the proportions of the various outlier classes displayed in the second graphic. The second graphic shows the sequence view annotated by issues in geometry and electron density. Residues are color-coded according to the number of geometric quality criteria for which they contain at least one outlier: green = 0, yellow = 1, orange = 2 and red = 3 or more. A red dot above a residue indicates a poor fit to the electron density ( $RSRZ > 2$ ). Stretches of 2 or more consecutive residues without any outlier are shown as a green connector. Residues present in the sample, but not in the model, are shown in grey.

- Molecule 1: Dual specificity tyrosine-phosphorylation-regulated kinase 1A



- Molecule 1: Dual specificity tyrosine-phosphorylation-regulated kinase 1A



## 4 Data and refinement statistics

Property	Value	Source
Space group	P 1 21 1	Depositor
Cell constants a, b, c, $\alpha$ , $\beta$ , $\gamma$	67.84Å 69.36Å 89.15Å 90.00° 108.81° 90.00°	Depositor
Resolution (Å)	30.00 – 2.15 29.50 – 2.15	Depositor EDS
% Data completeness (in resolution range)	99.8 (30.00-2.15) 99.9 (29.50-2.15)	Depositor EDS
$R_{merge}$	0.08	Depositor
$R_{sym}$	(Not available)	Depositor
$\langle I/\sigma(I) \rangle$ <sup>1</sup>	1.47 (at 2.16Å)	Xtriage
Refinement program	REFMAC 5.6.0117	Depositor
R, $R_{free}$	0.225 , 0.272 0.228 , 0.283	Depositor DCC
$R_{free}$ test set	2095 reflections (4.90%)	wwPDB-VP
Wilson B-factor (Å <sup>2</sup> )	34.2	Xtriage
Anisotropy	0.455	Xtriage
Bulk solvent $k_{sol}$ (e/Å <sup>3</sup> ), $B_{sol}$ (Å <sup>2</sup> )	0.38 , 52.2	EDS
L-test for twinning <sup>2</sup>	$\langle  L  \rangle = 0.55$ , $\langle L^2 \rangle = 0.39$	Xtriage
Estimated twinning fraction	No twinning to report.	Xtriage
$F_o, F_c$ correlation	0.95	EDS
Total number of atoms	5735	wwPDB-VP
Average B, all atoms (Å <sup>2</sup> )	59.0	wwPDB-VP

Xtriage's analysis on translational NCS is as follows: *The analyses of the Patterson function reveals a significant off-origin peak that is 43.73 % of the origin peak, indicating pseudo-translational symmetry. The chance of finding a peak of this or larger height randomly in a structure without pseudo-translational symmetry is equal to 1.6901e-04. The detected translational NCS is most likely also responsible for the elevated intensity ratio.*

<sup>1</sup>Intensities estimated from amplitudes.

<sup>2</sup>Theoretical values of  $\langle |L| \rangle$ ,  $\langle L^2 \rangle$  for acentric reflections are 0.5, 0.333 respectively for untwinned datasets, and 0.375, 0.2 for perfectly twinned datasets.

## 5 Model quality [i](#)

### 5.1 Standard geometry [i](#)

Bond lengths and bond angles in the following residue types are not validated in this section: 9OL, PTR

The Z score for a bond length (or angle) is the number of standard deviations the observed value is removed from the expected value. A bond length (or angle) with  $|Z| > 5$  is considered an outlier worth inspection. RMSZ is the root-mean-square of all Z scores of the bond lengths (or angles).

Mol	Chain	Bond lengths		Bond angles	
		RMSZ	$\# Z  > 5$	RMSZ	$\# Z  > 5$
1	A	0.60	2/2812 (0.1%)	0.68	0/3790
1	B	0.60	4/2816 (0.1%)	0.67	0/3797
All	All	0.60	6/5628 (0.1%)	0.68	0/7587

All (6) bond length outliers are listed below:

Mol	Chain	Res	Type	Atoms	Z	Observed(Å)	Ideal(Å)
1	A	345	TRP	CD2-CE2	6.46	1.49	1.41
1	B	345	TRP	CD2-CE2	6.14	1.48	1.41
1	A	403	TRP	CD2-CE2	5.50	1.48	1.41
1	B	184	TRP	CD2-CE2	5.10	1.47	1.41
1	B	403	TRP	CD2-CE2	5.07	1.47	1.41
1	B	155	TRP	CD2-CE2	5.02	1.47	1.41

There are no bond angle outliers.

There are no chirality outliers.

There are no planarity outliers.

### 5.2 Too-close contacts [i](#)

In the following table, the Non-H and H(model) columns list the number of non-hydrogen atoms and hydrogen atoms in the chain respectively. The H(added) column lists the number of hydrogen atoms added and optimized by MolProbity. The Clashes column lists the number of clashes within the asymmetric unit, whereas Symm-Clashes lists symmetry related clashes.

Mol	Chain	Non-H	H(model)	H(added)	Clashes	Symm-Clashes
1	A	2766	0	2757	19	0
1	B	2768	0	2770	15	0
2	A	25	0	0	1	0

*Continued on next page...*

*Continued from previous page...*

Mol	Chain	Non-H	H(model)	H(added)	Clashes	Symm-Clashes
2	B	25	0	0	1	0
3	A	78	0	0	0	0
3	B	73	0	0	0	0
All	All	5735	0	5527	35	0

The all-atom clashscore is defined as the number of clashes found per 1000 atoms (including hydrogen atoms). The all-atom clashscore for this structure is 3.

All (35) close contacts within the same asymmetric unit are listed below, sorted by their clash magnitude.

Atom-1	Atom-2	Interatomic distance (Å)	Clash overlap (Å)
1:A:179:ARG:HG3	1:A:179:ARG:HH21	1.28	0.96
1:B:312:CYS:HB2	1:B:316:GLN:HG3	1.66	0.77
1:B:313:GLN:O	1:B:316:GLN:HG2	1.91	0.70
1:A:179:ARG:NH2	1:A:179:ARG:HG3	2.01	0.67
1:B:419:GLY:O	1:B:422:LYS:HE3	1.97	0.65
1:A:198:ASN:HD21	1:B:319:TYR:HE1	1.45	0.64
1:B:285:HIS:O	1:B:286:CYS:HB2	2.00	0.61
1:A:320:GLN:HA	1:A:320:GLN:HE21	1.72	0.55
1:A:255:ARG:HH11	1:A:255:ARG:HG2	1.75	0.52
1:A:458:ARG:HB3	1:A:468:ILE:HB	1.91	0.50
1:A:281:LEU:O	1:A:313:GLN:HG2	2.12	0.50
1:B:458:ARG:HB3	1:B:468:ILE:HB	1.95	0.49
1:B:319:TYR:N	1:B:319:TYR:CD2	2.82	0.48
1:A:362:SER:O	1:A:372:LYS:HE3	2.14	0.48
1:A:252:THR:O	1:A:255:ARG:CD	2.63	0.46
1:A:438:ARG:HB3	1:A:444:HIS:CD2	2.51	0.46
1:A:352:VAL:HG11	1:A:360:LEU:HD13	1.98	0.45
1:B:416:LYS:HB3	1:B:420:THR:OG1	2.17	0.45
1:B:154:LYS:HA	1:B:159:TYR:O	2.17	0.45
1:A:255:ARG:NH1	1:A:255:ARG:HG2	2.32	0.45
1:A:472:TYR:HA	1:A:475:GLN:HG2	1.99	0.45
1:B:162:ASP:HB2	1:B:184:TRP:HZ3	1.82	0.45
2:B:801:9OL:C21	2:B:801:9OL:N25	2.80	0.44
1:A:285:HIS:O	1:A:286:CYS:HB2	2.17	0.44
1:B:249:LEU:HD22	1:B:357:GLY:HA2	2.00	0.43
1:A:377:LEU:HD11	1:A:460:LEU:HB3	2.01	0.43
1:A:417:PRO:HG2	1:A:420:THR:HG21	2.00	0.43
1:B:334:LEU:HB3	1:B:388:ALA:HB1	2.00	0.42
1:A:243:TYR:HB2	1:A:247:ASP:OD2	2.20	0.42
1:A:252:THR:O	1:A:255:ARG:HD3	2.19	0.42

*Continued on next page...*



*Continued from previous page...*

Atom-1	Atom-2	Interatomic distance (Å)	Clash overlap (Å)
1:B:459:MET:O	1:B:467:ARG:HD3	2.21	0.41
1:B:247:ASP:OD1	1:B:250:ARG:NH2	2.54	0.41
1:B:221:ILE:HG23	1:B:308:PHE:CE2	2.56	0.41
2:A:801:9OL:N25	2:A:801:9OL:C21	2.84	0.41
1:A:177:TYR:OH	1:A:182:GLN:NE2	2.55	0.40

There are no symmetry-related clashes.

## 5.3 Torsion angles [i](#)

### 5.3.1 Protein backbone [i](#)

In the following table, the Percentiles column shows the percent Ramachandran outliers of the chain as a percentile score with respect to all X-ray entries followed by that with respect to entries of similar resolution.

The Analysed column shows the number of residues for which the backbone conformation was analysed, and the total number of residues.

Mol	Chain	Analysed	Favoured	Allowed	Outliers	Percentiles	
1	A	331/360 (92%)	315 (95%)	16 (5%)	0	100	100
1	B	333/360 (92%)	316 (95%)	16 (5%)	1 (0%)	43	39
All	All	664/720 (92%)	631 (95%)	32 (5%)	1 (0%)	49	48

All (1) Ramachandran outliers are listed below:

Mol	Chain	Res	Type
1	B	317	ARG

### 5.3.2 Protein sidechains [i](#)

In the following table, the Percentiles column shows the percent sidechain outliers of the chain as a percentile score with respect to all X-ray entries followed by that with respect to entries of similar resolution.

The Analysed column shows the number of residues for which the sidechain conformation was analysed, and the total number of residues.

*Continued on next page...*

*Continued from previous page...*

Mol	Chain	Analysed	Rotameric	Outliers	Percentiles	
1	A	298/318 (94%)	289 (97%)	9 (3%)	44	43
1	B	299/318 (94%)	292 (98%)	7 (2%)	53	56
All	All	597/636 (94%)	581 (97%)	16 (3%)	48	49

All (16) residues with a non-rotameric sidechain are listed below:

Mol	Chain	Res	Type
1	A	179	ARG
1	A	213	HIS
1	A	215	THR
1	A	255	ARG
1	A	264	LYS
1	A	297	ASN
1	A	318	ILE
1	A	320	GLN
1	A	480	LYS
1	B	144	ASN
1	B	150	LYS
1	B	213	HIS
1	B	214	ASP
1	B	218	LYS
1	B	319	TYR
1	B	480	LYS

Some sidechains can be flipped to improve hydrogen bonding and reduce clashes. All (8) such sidechains are listed below:

Mol	Chain	Res	Type
1	A	182	GLN
1	A	198	ASN
1	A	251	ASN
1	A	320	GLN
1	B	151	ASN
1	B	182	GLN
1	B	199	GLN
1	B	425	ASN

### 5.3.3 RNA ⓘ

There are no RNA molecules in this entry.

## 5.4 Non-standard residues in protein, DNA, RNA chains ⓘ

2 non-standard protein/DNA/RNA residues are modelled in this entry.

In the following table, the Counts columns list the number of bonds (or angles) for which Mogul statistics could be retrieved, the number of bonds (or angles) that are observed in the model and the number of bonds (or angles) that are defined in the Chemical Component Dictionary. The Link column lists molecule types, if any, to which the group is linked. The Z score for a bond length (or angle) is the number of standard deviations the observed value is removed from the expected value. A bond length (or angle) with  $|Z| > 2$  is considered an outlier worth inspection. RMSZ is the root-mean-square of all Z scores of the bond lengths (or angles).

Mol	Type	Chain	Res	Link	Bond lengths			Bond angles		
					Counts	RMSZ	$\# Z  > 2$	Counts	RMSZ	$\# Z  > 2$
1	PTR	A	321	1	16,16,17	0.72	0	21,22,24	1.06	0
1	PTR	B	321	1	16,16,17	0.66	0	21,22,24	1.07	1 (4%)

In the following table, the Chirals column lists the number of chiral outliers, the number of chiral centers analysed, the number of these observed in the model and the number defined in the Chemical Component Dictionary. Similar counts are reported in the Torsion and Rings columns. '-' means no outliers of that kind were identified.

Mol	Type	Chain	Res	Link	Chirals	Torsions	Rings
1	PTR	A	321	1	-	0/9/11/13	0/1/1/1
1	PTR	B	321	1	-	0/9/11/13	0/1/1/1

There are no bond length outliers.

All (1) bond angle outliers are listed below:

Mol	Chain	Res	Type	Atoms	Z	Observed(°)	Ideal(°)
1	B	321	PTR	O3P-P-O2P	2.35	116.87	107.59

There are no chirality outliers.

There are no torsion outliers.

There are no ring outliers.

No monomer is involved in short contacts.

## 5.5 Carbohydrates [i](#)

There are no carbohydrates in this entry.

## 5.6 Ligand geometry [i](#)

2 ligands are modelled in this entry.

In the following table, the Counts columns list the number of bonds (or angles) for which Mogul statistics could be retrieved, the number of bonds (or angles) that are observed in the model and the number of bonds (or angles) that are defined in the Chemical Component Dictionary. The Link column lists molecule types, if any, to which the group is linked. The Z score for a bond length (or angle) is the number of standard deviations the observed value is removed from the expected value. A bond length (or angle) with  $|Z| > 2$  is considered an outlier worth inspection. RMSZ is the root-mean-square of all Z scores of the bond lengths (or angles).

Mol	Type	Chain	Res	Link	Bond lengths			Bond angles		
					Counts	RMSZ	$\# Z  > 2$	Counts	RMSZ	$\# Z  > 2$
2	9OL	A	801	-	27,28,28	1.48	3 (11%)	35,42,42	1.75	5 (14%)
2	9OL	B	801	-	27,28,28	1.09	2 (7%)	35,42,42	1.50	4 (11%)

In the following table, the Chirals column lists the number of chiral outliers, the number of chiral centers analysed, the number of these observed in the model and the number defined in the Chemical Component Dictionary. Similar counts are reported in the Torsion and Rings columns. '-' means no outliers of that kind were identified.

Mol	Type	Chain	Res	Link	Chirals	Torsions	Rings
2	9OL	A	801	-	-	0/8/31/31	0/4/4/4
2	9OL	B	801	-	-	0/8/31/31	0/4/4/4

All (5) bond length outliers are listed below:

Mol	Chain	Res	Type	Atoms	Z	Observed(Å)	Ideal(Å)
2	A	801	9OL	C18-C12	-5.35	1.48	1.51
2	B	801	9OL	C18-C12	-3.26	1.50	1.51
2	A	801	9OL	C6-C12	-3.12	1.46	1.49
2	A	801	9OL	C10-N25	2.22	1.39	1.34
2	B	801	9OL	C10-N25	2.74	1.41	1.34

All (9) bond angle outliers are listed below:

Mol	Chain	Res	Type	Atoms	Z	Observed(°)	Ideal(°)
2	A	801	9OL	C6-C12-C11	-5.41	115.86	121.60
2	B	801	9OL	C6-C12-C11	-4.85	116.45	121.60

*Continued on next page...*

*Continued from previous page...*

Mol	Chain	Res	Type	Atoms	Z	Observed(°)	Ideal(°)
2	A	801	9OL	C18-C12-C11	-4.67	118.37	124.41
2	B	801	9OL	C18-C12-C11	-4.33	118.81	124.41
2	A	801	9OL	C5-C9-N22	-3.63	113.70	117.83
2	A	801	9OL	C2-C6-C12	-2.94	117.92	121.11
2	B	801	9OL	C5-C9-N22	-2.61	114.86	117.83
2	B	801	9OL	C16-C14-C18	-2.05	108.56	111.42
2	A	801	9OL	C1-C5-C9	-2.01	119.52	122.38

There are no chirality outliers.

There are no torsion outliers.

There are no ring outliers.

2 monomers are involved in 2 short contacts:

Mol	Chain	Res	Type	Clashes	Symm-Clashes
2	A	801	9OL	1	0
2	B	801	9OL	1	0

## 5.7 Other polymers [i](#)

There are no such residues in this entry.

## 5.8 Polymer linkage issues [i](#)

There are no chain breaks in this entry.

## 6 Fit of model and data

### 6.1 Protein, DNA and RNA chains

In the following table, the column labelled ‘#RSRZ> 2’ contains the number (and percentage) of RSRZ outliers, followed by percent RSRZ outliers for the chain as percentile scores relative to all X-ray entries and entries of similar resolution. The OWAB column contains the minimum, median, 95<sup>th</sup> percentile and maximum values of the occupancy-weighted average B-factor per residue. The column labelled ‘Q< 0.9’ lists the number of (and percentage) of residues with an average occupancy less than 0.9.

Mol	Chain	Analysed	<RSRZ>	#RSRZ>2	OWAB(Å <sup>2</sup> )	Q<0.9
1	A	337/360 (93%)	0.62	33 (9%) <b>7</b> <b>11</b>	41, 57, 84, 116	0
1	B	337/360 (93%)	0.74	43 (12%) <b>3</b> <b>5</b>	40, 58, 81, 117	0
All	All	674/720 (93%)	0.68	76 (11%) <b>5</b> <b>7</b>	40, 58, 83, 117	0

All (76) RSRZ outliers are listed below:

Mol	Chain	Res	Type	RSRZ
1	A	440	GLY	6.6
1	A	317	ARG	6.3
1	B	317	ARG	5.6
1	B	316	GLN	5.3
1	B	135	VAL	4.9
1	B	214	ASP	4.6
1	A	214	ASP	4.5
1	A	351	LEU	4.4
1	A	315	GLY	4.3
1	B	384	ILE	4.3
1	B	243	TYR	4.1
1	A	243	TYR	3.9
1	B	415	TYR	3.9
1	B	215	THR	3.7
1	B	318	ILE	3.7
1	B	211	ASN	3.7
1	B	351	LEU	3.6
1	B	254	PHE	3.4
1	A	219	TYR	3.4
1	B	253	ASN	3.3
1	B	396	GLU	3.2
1	B	143	ASP	3.2
1	A	384	ILE	3.1
1	B	347	LEU	3.1

*Continued on next page...*

*Continued from previous page...*

Mol	Chain	Res	Type	RSRZ
1	A	135	VAL	3.1
1	B	440	GLY	3.1
1	B	395	PHE	3.1
1	A	383	HIS	3.1
1	B	251	ASN	3.1
1	B	383	HIS	3.0
1	A	347	LEU	3.0
1	B	352	VAL	3.0
1	B	212	LYS	2.9
1	B	350	ILE	2.9
1	B	319	TYR	2.9
1	B	345	TRP	2.9
1	B	219	TYR	2.9
1	B	456	ILE	2.8
1	A	250	ARG	2.7
1	A	136	TYR	2.7
1	A	216	GLU	2.7
1	A	472	TYR	2.7
1	B	250	ARG	2.7
1	B	288	LEU	2.7
1	B	315	GLY	2.6
1	B	348	GLY	2.6
1	B	157	ASP	2.5
1	A	288	LEU	2.5
1	B	286	CYS	2.5
1	B	346	SER	2.5
1	B	136	TYR	2.5
1	B	405	LEU	2.4
1	A	345	TRP	2.4
1	A	480	LYS	2.4
1	A	303	ILE	2.4
1	A	350	ILE	2.4
1	B	252	THR	2.4
1	A	387	GLN	2.4
1	A	400	ASP	2.4
1	A	349	CYS	2.3
1	A	420	THR	2.3
1	A	471	TYR	2.3
1	A	348	GLY	2.3
1	A	401	GLY	2.3
1	B	401	GLY	2.2
1	B	382	ALA	2.2

*Continued on next page...*

*Continued from previous page...*

Mol	Chain	Res	Type	RSRZ
1	A	316	GLN	2.2
1	B	150	LYS	2.2
1	A	403	TRP	2.1
1	A	446	VAL	2.1
1	B	446	VAL	2.1
1	A	319	TYR	2.1
1	B	337	PRO	2.0
1	A	402	THR	2.0
1	A	300	ARG	2.0
1	B	142	ASP	2.0

## 6.2 Non-standard residues in protein, DNA, RNA chains [i](#)

In the following table, the Atoms column lists the number of modelled atoms in the group and the number defined in the chemical component dictionary. The B-factors column lists the minimum, median, 95<sup>th</sup> percentile and maximum values of B factors of atoms in the group. The column labelled 'Q< 0.9' lists the number of atoms with occupancy less than 0.9.

Mol	Type	Chain	Res	Atoms	RSCC	RSR	B-factors(Å <sup>2</sup> )	Q<0.9
1	PTR	B	321	16/17	0.95	0.11	46,50,58,61	0
1	PTR	A	321	16/17	0.95	0.12	50,59,66,74	0

## 6.3 Carbohydrates [i](#)

There are no carbohydrates in this entry.

## 6.4 Ligands [i](#)

In the following table, the Atoms column lists the number of modelled atoms in the group and the number defined in the chemical component dictionary. The B-factors column lists the minimum, median, 95<sup>th</sup> percentile and maximum values of B factors of atoms in the group. The column labelled 'Q< 0.9' lists the number of atoms with occupancy less than 0.9.

Mol	Type	Chain	Res	Atoms	RSCC	RSR	B-factors(Å <sup>2</sup> )	Q<0.9
2	9OL	A	801	25/25	0.90	0.15	42,49,57,58	0
2	9OL	B	801	25/25	0.91	0.14	48,54,78,87	0

## 6.5 Other polymers [i](#)

There are no such residues in this entry.