



Full wwPDB X-ray Structure Validation Report ⓘ

Apr 15, 2019 – 02:19 PM EDT

PDB ID : 6A2M
Title : Crystal structure of wild type Plasmodium falciparum DHFR-TS complexed with BT2, NADPH, and dUMP
Authors : Chitnumsub, P.; Jaruwat, A.; Tarnchampoo, B.; Yuthavong, Y.
Deposited on : 2018-06-12
Resolution : 2.20 Å(reported)

This is a Full wwPDB X-ray Structure Validation Report for a publicly released PDB entry.

We welcome your comments at validation@mail.wwpdb.org

A user guide is available at

<https://www.wwpdb.org/validation/2017/XrayValidationReportHelp>

with specific help available everywhere you see the ⓘ symbol.

The following versions of software and data (see [references ⓘ](#)) were used in the production of this report:

MolProbity : 4.02b-467
Mogul : 1.8.0 (224370), CSD as540be (2019)
Xtriage (Phenix) : 1.13
EDS : rb-20031633
Percentile statistics : 20171227.v01 (using entries in the PDB archive December 27th 2017)
Refmac : 5.8.0158
CCP4 : 7.0 (Gargrove)
Ideal geometry (proteins) : Engh & Huber (2001)
Ideal geometry (DNA, RNA) : Parkinson et al. (1996)
Validation Pipeline (wwPDB-VP) : rb-20031633

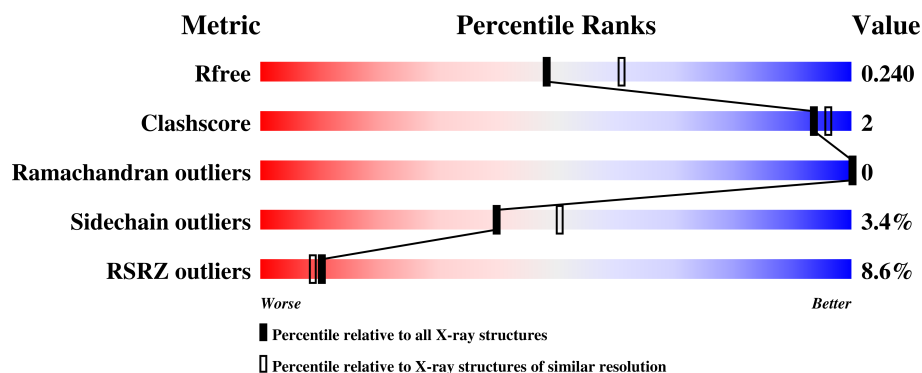
1 Overall quality at a glance

The following experimental techniques were used to determine the structure:

X-RAY DIFFRACTION

The reported resolution of this entry is 2.20 Å.

Percentile scores (ranging between 0-100) for global validation metrics of the entry are shown in the following graphic. The table shows the number of entries on which the scores are based.



Metric	Whole archive (#Entries)	Similar resolution (#Entries, resolution range(Å))
R_{free}	111664	4343 (2.20-2.20)
Clashscore	122126	5027 (2.20-2.20)
Ramachandran outliers	120053	4952 (2.20-2.20)
Sidechain outliers	120020	4953 (2.20-2.20)
RSRZ outliers	108989	4245 (2.20-2.20)

The table below summarises the geometric issues observed across the polymeric chains and their fit to the electron density. The red, orange, yellow and green segments on the lower bar indicate the fraction of residues that contain outliers for ≥ 3 , 2, 1 and 0 types of geometric quality criteria. A grey segment represents the fraction of residues that are not modelled. The numeric value for each fraction is indicated below the corresponding segment, with a dot representing fractions $\leq 5\%$. The upper red bar (where present) indicates the fraction of residues that have poor fit to the electron density. The numeric value is given above the bar.

Mol	Chain	Length	Quality of chain
1	A	608	<div> <div>4%</div> <div>83%</div> <div>5%</div> <div>12%</div> </div>
1	B	608	<div> <div>11%</div> <div>82%</div> <div>5%</div> <div>12%</div> </div>

2 Entry composition [i](#)

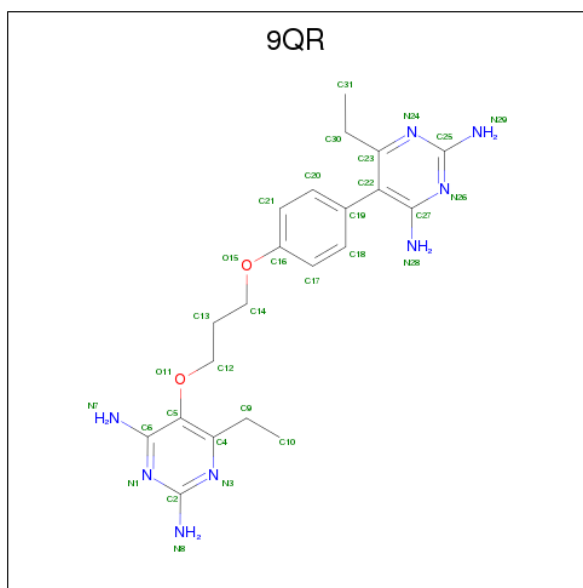
There are 6 unique types of molecules in this entry. The entry contains 9806 atoms, of which 0 are hydrogens and 0 are deuteriums.

In the tables below, the ZeroOcc column contains the number of atoms modelled with zero occupancy, the AltConf column contains the number of residues with at least one atom in alternate conformation and the Trace column contains the number of residues modelled with at most 2 atoms.

- Molecule 1 is a protein called Bifunctional dihydrofolate reductase-thymidylate synthase.

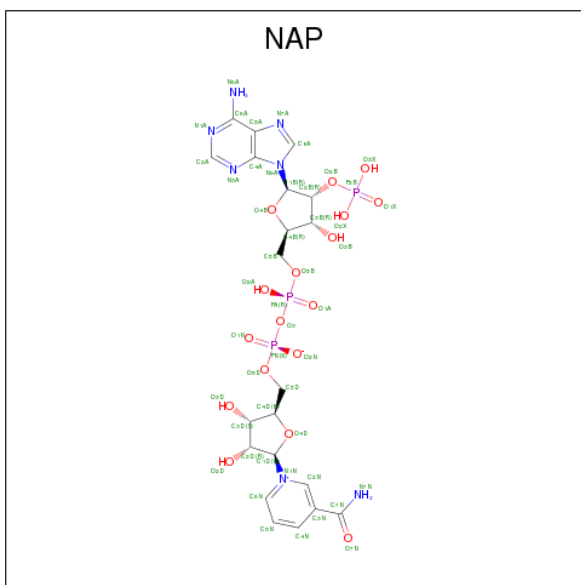
Mol	Chain	Residues	Atoms					ZeroOcc	AltConf	Trace
1	A	537	Total	C	N	O	S	0	0	0
			4463	2884	736	816	27			
1	B	536	Total	C	N	O	S	0	0	0
			4454	2878	734	815	27			

- Molecule 2 is 5-(4-{3-[(2,4-diamino-6-ethylpyrimidin-5-yl)oxy]propoxy}phenyl)-6-ethylpyrimidine-2,4-diamine (three-letter code: 9QR) (formula: C₂₁H₂₈N₈O₂).



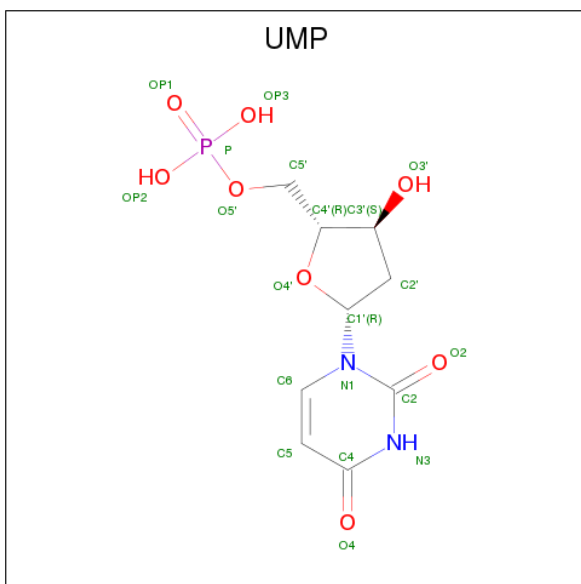
Mol	Chain	Residues	Atoms				ZeroOcc	AltConf
2	A	1	Total	C	N	O	0	0
			31	21	8	2		
2	B	1	Total	C	N	O	0	0
			31	21	8	2		

- Molecule 3 is NADP NICOTINAMIDE-ADENINE-DINUCLEOTIDE PHOSPHATE (three-letter code: NAP) (formula: C₂₁H₂₈N₇O₁₇P₃).



Mol	Chain	Residues	Atoms					ZeroOcc	AltConf
3	A	1	Total 48	C 21	N 7	O 17	P 3	0	0
3	B	1	Total 48	C 21	N 7	O 17	P 3	0	0

- Molecule 4 is 2'-DEOXYURIDINE 5'-MONOPHOSPHATE (three-letter code: UMP) (formula: $\text{C}_9\text{H}_{13}\text{N}_2\text{O}_8\text{P}$).



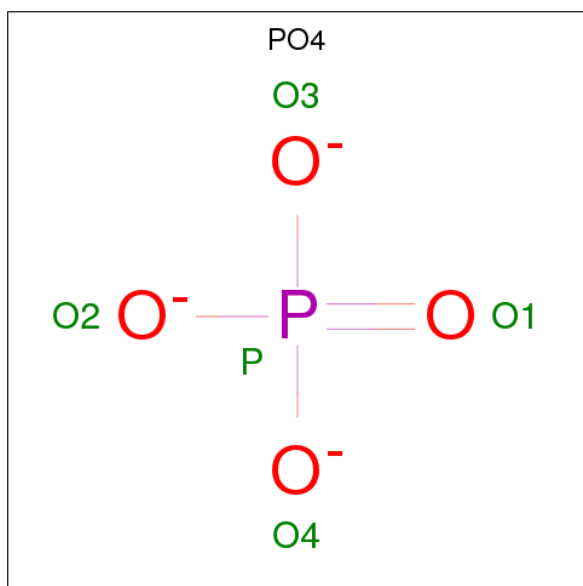
Mol	Chain	Residues	Atoms					ZeroOcc	AltConf
4	A	1	Total	C	N	O	P	0	0
			20	9	2	8	1		

Continued on next page...

Continued from previous page...

Mol	Chain	Residues	Atoms					ZeroOcc	AltConf
4	B	1	Total	C	N	O	P	0	0
			20	9	2	8	1		

- Molecule 5 is PHOSPHATE ION (three-letter code: PO4) (formula: O₄P).



Mol	Chain	Residues	Atoms			ZeroOcc	AltConf
5	A	1	Total	O	P	0	0
			5	4	1		
5	B	1	Total	O	P	0	0
			5	4	1		

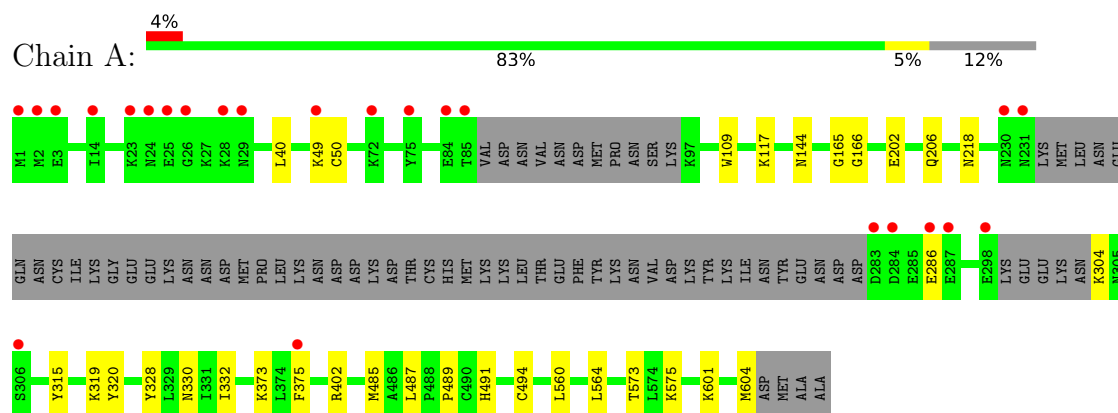
- Molecule 6 is water.

Mol	Chain	Residues	Atoms		ZeroOcc	AltConf
6	A	356	Total	O	0	0
			356	356		
6	B	325	Total	O	0	0
			325	325		

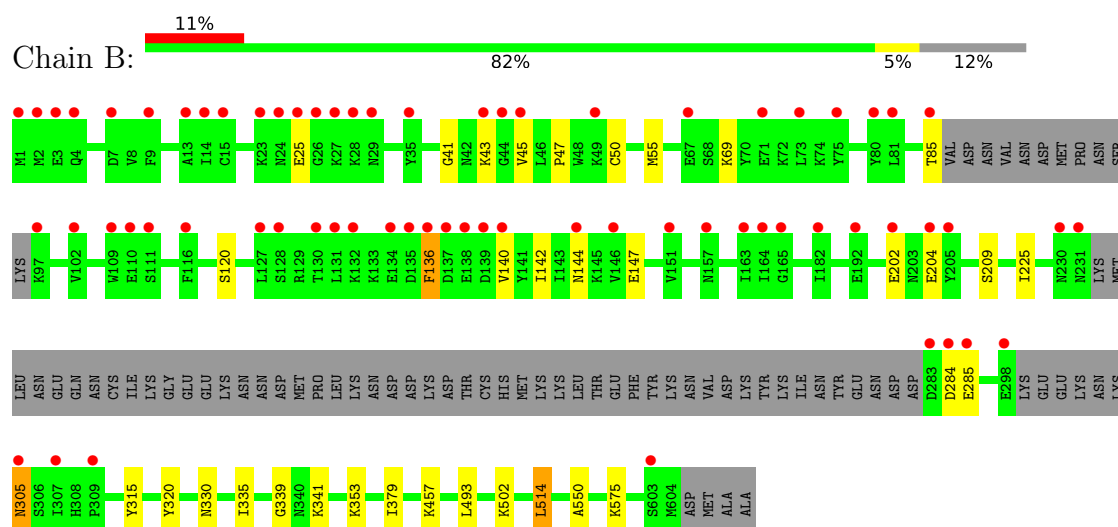
3 Residue-property plots

These plots are drawn for all protein, RNA and DNA chains in the entry. The first graphic for a chain summarises the proportions of the various outlier classes displayed in the second graphic. The second graphic shows the sequence view annotated by issues in geometry and electron density. Residues are color-coded according to the number of geometric quality criteria for which they contain at least one outlier: green = 0, yellow = 1, orange = 2 and red = 3 or more. A red dot above a residue indicates a poor fit to the electron density ($RSRZ > 2$). Stretches of 2 or more consecutive residues without any outlier are shown as a green connector. Residues present in the sample, but not in the model, are shown in grey.

- Molecule 1: Bifunctional dihydrofolate reductase-thymidylate synthase



- Molecule 1: Bifunctional dihydrofolate reductase-thymidylate synthase



4 Data and refinement statistics

Property	Value	Source
Space group	P 21 21 21	Depositor
Cell constants a, b, c, α , β , γ	58.48Å 157.28Å 165.74Å 90.00° 90.00° 90.00°	Depositor
Resolution (Å)	30.00 – 2.20 29.41 – 2.20	Depositor EDS
% Data completeness (in resolution range)	91.8 (30.00-2.20) 91.9 (29.41-2.20)	Depositor EDS
R_{merge}	0.03	Depositor
R_{sym}	(Not available)	Depositor
$\langle I/\sigma(I) \rangle$ ¹	4.64 (at 2.20Å)	Xtriage
Refinement program	REFMAC 5.8.0135	Depositor
R, R_{free}	0.191 , 0.243 0.192 , 0.240	Depositor DCC
R_{free} test set	3635 reflections (5.05%)	wwPDB-VP
Wilson B-factor (Å ²)	26.4	Xtriage
Anisotropy	0.193	Xtriage
Bulk solvent k_{sol} (e/Å ³), B_{sol} (Å ²)	0.32 , 44.2	EDS
L-test for twinning ²	$\langle L \rangle = 0.49$, $\langle L^2 \rangle = 0.32$	Xtriage
Estimated twinning fraction	No twinning to report.	Xtriage
F_o, F_c correlation	0.94	EDS
Total number of atoms	9806	wwPDB-VP
Average B, all atoms (Å ²)	40.0	wwPDB-VP

Xtriage's analysis on translational NCS is as follows: *The largest off-origin peak in the Patterson function is 3.29% of the height of the origin peak. No significant pseudotranslation is detected.*

¹Intensities estimated from amplitudes.

²Theoretical values of $\langle |L| \rangle$, $\langle L^2 \rangle$ for acentric reflections are 0.5, 0.333 respectively for untwinned datasets, and 0.375, 0.2 for perfectly twinned datasets.

5 Model quality

5.1 Standard geometry

Bond lengths and bond angles in the following residue types are not validated in this section: PO4, UMP, NAP, 9QR

The Z score for a bond length (or angle) is the number of standard deviations the observed value is removed from the expected value. A bond length (or angle) with $|Z| > 5$ is considered an outlier worth inspection. RMSZ is the root-mean-square of all Z scores of the bond lengths (or angles).

Mol	Chain	Bond lengths		Bond angles	
		RMSZ	# Z >5	RMSZ	# Z >5
1	A	0.60	0/4567	0.73	1/6166 (0.0%)
1	B	0.56	0/4558	0.69	0/6155
All	All	0.58	0/9125	0.71	1/12321 (0.0%)

Chiral center outliers are detected by calculating the chiral volume of a chiral center and verifying if the center is modelled as a planar moiety or with the opposite hand. A planarity outlier is detected by checking planarity of atoms in a peptide group, atoms in a mainchain group or atoms of a sidechain that are expected to be planar.

Mol	Chain	#Chirality outliers	#Planarity outliers
1	A	0	1

There are no bond length outliers.

All (1) bond angle outliers are listed below:

Mol	Chain	Res	Type	Atoms	Z	Observed(°)	Ideal(°)
1	A	494	CYS	CB-CA-C	-7.23	95.94	110.40

There are no chirality outliers.

All (1) planarity outliers are listed below:

Mol	Chain	Res	Type	Group
1	A	165	GLY	Peptide

5.2 Too-close contacts

In the following table, the Non-H and H(model) columns list the number of non-hydrogen atoms and hydrogen atoms in the chain respectively. The H(added) column lists the number of hydrogen atoms added and optimized by MolProbity. The Clashes column lists the number of clashes within

the asymmetric unit, whereas Symm-Clashes lists symmetry related clashes.

Mol	Chain	Non-H	H(model)	H(added)	Clashes	Symm-Clashes
1	A	4463	0	4416	15	0
1	B	4454	0	4403	12	0
2	A	31	0	0	0	0
2	B	31	0	0	0	0
3	A	48	0	25	3	0
3	B	48	0	25	0	0
4	A	20	0	11	0	0
4	B	20	0	11	0	0
5	A	5	0	0	0	0
5	B	5	0	0	0	0
6	A	356	0	0	3	0
6	B	325	0	0	1	0
All	All	9806	0	8891	27	0

The all-atom clashscore is defined as the number of clashes found per 1000 atoms (including hydrogen atoms). The all-atom clashscore for this structure is 2.

All (27) close contacts within the same asymmetric unit are listed below, sorted by their clash magnitude.

Atom-1	Atom-2	Interatomic distance (Å)	Clash overlap (Å)
1:A:573:THR:HG23	6:A:931:HOH:O	1.82	0.80
1:A:373:LYS:HE2	1:A:375:PHE:CZ	2.36	0.60
1:A:109:TRP:CE2	1:A:117:LYS:HD2	2.43	0.54
1:B:315:TYR:OH	1:B:330:ASN:ND2	2.40	0.54
1:A:573:THR:HG22	6:A:1116:HOH:O	2.09	0.53
1:A:109:TRP:CZ2	1:A:117:LYS:HD2	2.44	0.52
1:B:136:PHE:CE2	1:B:140:VAL:HG22	2.45	0.51
1:B:209:SER:OG	1:B:225:ILE:HD12	2.12	0.50
1:A:166:GLY:HA3	3:A:702:NAP:O1A	2.12	0.49
1:B:209:SER:HB2	1:B:320:TYR:HB2	1.94	0.48
1:B:514:LEU:HD11	1:B:550:ALA:HB1	1.95	0.48
1:A:166:GLY:HA3	3:A:702:NAP:PA	2.55	0.47
1:A:218:ASN:HB2	6:A:1109:HOH:O	2.17	0.45
1:B:335:ILE:CD1	1:B:514:LEU:HD13	2.47	0.44
1:B:502:LYS:HG2	6:B:922:HOH:O	2.17	0.44
1:A:485:MET:SD	1:A:489:PRO:HD3	2.57	0.44
1:B:305:ASN:N	1:B:341:LYS:HZ2	2.15	0.44
1:A:40:LEU:O	3:A:702:NAP:H2N	2.18	0.44
1:B:136:PHE:CE1	1:B:142:ILE:HD11	2.54	0.43
1:A:315:TYR:OH	1:A:330:ASN:ND2	2.52	0.42

Continued on next page...

Continued from previous page...

Atom-1	Atom-2	Interatomic distance (Å)	Clash overlap (Å)
1:B:41:GLY:HA2	1:B:47:PRO:HD3	2.02	0.42
1:A:319:LYS:HG2	1:A:320:TYR:CE2	2.54	0.42
1:A:332:ILE:HD13	1:A:560:LEU:HD22	2.01	0.41
1:A:328:TYR:CZ	1:A:332:ILE:HD11	2.56	0.41
1:B:335:ILE:O	1:B:339:GLY:N	2.51	0.40
1:A:315:TYR:HB2	1:A:564:LEU:O	2.22	0.40
1:B:493:LEU:HD12	1:B:493:LEU:C	2.42	0.40

There are no symmetry-related clashes.

5.3 Torsion angles [i](#)

5.3.1 Protein backbone [i](#)

In the following table, the Percentiles column shows the percent Ramachandran outliers of the chain as a percentile score with respect to all X-ray entries followed by that with respect to entries of similar resolution.

The Analysed column shows the number of residues for which the backbone conformation was analysed, and the total number of residues.

Mol	Chain	Analysed	Favoured	Allowed	Outliers	Percentiles	
1	A	529/608 (87%)	512 (97%)	17 (3%)	0	100	100
1	B	528/608 (87%)	513 (97%)	15 (3%)	0	100	100
All	All	1057/1216 (87%)	1025 (97%)	32 (3%)	0	100	100

There are no Ramachandran outliers to report.

5.3.2 Protein sidechains [i](#)

In the following table, the Percentiles column shows the percent sidechain outliers of the chain as a percentile score with respect to all X-ray entries followed by that with respect to entries of similar resolution.

The Analysed column shows the number of residues for which the sidechain conformation was analysed, and the total number of residues.

Mol	Chain	Analysed	Rotameric	Outliers	Percentiles	
1	A	502/570 (88%)	489 (97%)	13 (3%)	49	62

Continued on next page...

Continued from previous page...

Mol	Chain	Analysed	Rotameric	Outliers	Percentiles	
1	B	501/570 (88%)	480 (96%)	21 (4%)	32	41
All	All	1003/1140 (88%)	969 (97%)	34 (3%)	40	50

All (34) residues with a non-rotameric sidechain are listed below:

Mol	Chain	Res	Type
1	A	49	LYS
1	A	50	CYS
1	A	144	ASN
1	A	202	GLU
1	A	206	GLN
1	A	286	GLU
1	A	304	LYS
1	A	402	ARG
1	A	487	LEU
1	A	491	HIS
1	A	575	LYS
1	A	601	LYS
1	A	604	MET
1	B	25	GLU
1	B	43	LYS
1	B	45	VAL
1	B	50	CYS
1	B	55	MET
1	B	69	LYS
1	B	85	THR
1	B	120	SER
1	B	136	PHE
1	B	144	ASN
1	B	147	GLU
1	B	202	GLU
1	B	204	GLU
1	B	284	ASP
1	B	285	GLU
1	B	305	ASN
1	B	353	LYS
1	B	379	ILE
1	B	457	LYS
1	B	514	LEU
1	B	575	LYS

Some sidechains can be flipped to improve hydrogen bonding and reduce clashes. All (11) such

sidechains are listed below:

Mol	Chain	Res	Type
1	A	99	GLN
1	A	144	ASN
1	A	330	ASN
1	B	29	ASN
1	B	99	GLN
1	B	144	ASN
1	B	330	ASN
1	B	394	ASN
1	B	407	ASN
1	B	415	ASN
1	B	424	ASN

5.3.3 RNA ⓘ

There are no RNA molecules in this entry.

5.4 Non-standard residues in protein, DNA, RNA chains ⓘ

There are no non-standard protein/DNA/RNA residues in this entry.

5.5 Carbohydrates ⓘ

There are no carbohydrates in this entry.

5.6 Ligand geometry ⓘ

8 ligands are modelled in this entry.

In the following table, the Counts columns list the number of bonds (or angles) for which Mogul statistics could be retrieved, the number of bonds (or angles) that are observed in the model and the number of bonds (or angles) that are defined in the Chemical Component Dictionary. The Link column lists molecule types, if any, to which the group is linked. The Z score for a bond length (or angle) is the number of standard deviations the observed value is removed from the expected value. A bond length (or angle) with $|Z| > 2$ is considered an outlier worth inspection. RMSZ is the root-mean-square of all Z scores of the bond lengths (or angles).

Mol	Type	Chain	Res	Link	Bond lengths			Bond angles		
					Counts	RMSZ	$\# Z > 2$	Counts	RMSZ	$\# Z > 2$
2	9QR	A	701	-	32,33,33	0.79	0	38,45,45	2.47	13 (34%)
3	NAP	A	702	-	43,52,52	1.04	3 (6%)	53,80,80	1.51	10 (18%)

Mol	Type	Chain	Res	Link	Bond lengths			Bond angles		
					Counts	RMSZ	# Z > 2	Counts	RMSZ	# Z > 2
4	UMP	A	703	-	17,21,21	0.85	1 (5%)	22,31,31	1.03	1 (4%)
5	PO4	A	704	-	4,4,4	0.93	0	6,6,6	0.57	0
2	9QR	B	701	-	32,33,33	0.71	0	38,45,45	2.43	9 (23%)
3	NAP	B	702	-	43,52,52	0.89	1 (2%)	53,80,80	1.16	4 (7%)
4	UMP	B	703	-	17,21,21	1.02	1 (5%)	22,31,31	1.20	2 (9%)
5	PO4	B	704	-	4,4,4	0.79	0	6,6,6	0.69	0

In the following table, the Chirals column lists the number of chiral outliers, the number of chiral centers analysed, the number of these observed in the model and the number defined in the Chemical Component Dictionary. Similar counts are reported in the Torsion and Rings columns. '-' means no outliers of that kind were identified.

Mol	Type	Chain	Res	Link	Chirals	Torsions	Rings
2	9QR	A	701	-	-	0/16/16/16	0/3/3/3
3	NAP	A	702	-	-	0/27/67/67	0/5/5/5
4	UMP	A	703	-	-	0/6/22/22	0/2/2/2
5	PO4	A	704	-	-	0/0/0/0	0/0/0/0
2	9QR	B	701	-	-	0/16/16/16	0/3/3/3
3	NAP	B	702	-	-	0/27/67/67	0/5/5/5
4	UMP	B	703	-	-	0/6/22/22	0/2/2/2
5	PO4	B	704	-	-	0/0/0/0	0/0/0/0

All (6) bond length outliers are listed below:

Mol	Chain	Res	Type	Atoms	Z	Observed(Å)	Ideal(Å)
4	A	703	UMP	C2-N3	-2.40	1.33	1.38
4	B	703	UMP	C2-N3	-2.39	1.33	1.38
3	A	702	NAP	O4D-C1D	2.16	1.44	1.41
3	A	702	NAP	C3N-C7N	2.66	1.54	1.50
3	A	702	NAP	C5A-C4A	3.06	1.47	1.40
3	B	702	NAP	C5A-C4A	3.18	1.47	1.40

All (39) bond angle outliers are listed below:

Mol	Chain	Res	Type	Atoms	Z	Observed(°)	Ideal(°)
2	A	701	9QR	C22-C27-N26	-5.45	119.43	122.52
2	B	701	9QR	C22-C27-N26	-5.28	119.53	122.52
2	B	701	9QR	N1-C2-N3	-3.74	119.49	125.42
2	A	701	9QR	N26-C25-N24	-3.66	119.62	125.42
3	B	702	NAP	N3A-C2A-N1A	-3.61	122.87	128.68
3	A	702	NAP	C4A-C5A-N7A	-3.60	105.64	109.40

Continued on next page...

Continued from previous page...

Mol	Chain	Res	Type	Atoms	Z	Observed(°)	Ideal(°)
2	B	701	9QR	C22-C23-N24	-3.47	119.31	123.64
3	A	702	NAP	N3A-C2A-N1A	-3.32	123.33	128.68
2	B	701	9QR	N26-C25-N24	-3.27	120.23	125.42
3	A	702	NAP	O7N-C7N-N7N	-3.26	117.95	122.60
2	A	701	9QR	C22-C23-N24	-3.11	119.76	123.64
3	A	702	NAP	C1B-N9A-C4A	-3.09	121.30	126.64
2	A	701	9QR	N1-C2-N3	-3.03	120.61	125.42
3	B	702	NAP	C4A-C5A-N7A	-2.77	106.51	109.40
3	B	702	NAP	O7N-C7N-N7N	-2.30	119.33	122.60
3	A	702	NAP	O2B-C2B-C1B	-2.21	102.15	110.10
3	A	702	NAP	O2B-P2B-O1X	-2.02	101.60	109.39
2	B	701	9QR	N8-C2-N3	2.02	120.41	117.25
2	A	701	9QR	N7-C6-N1	2.03	119.93	117.03
4	B	703	UMP	C2'-C1'-N1	2.06	119.03	114.27
3	B	702	NAP	C3N-C2N-N1N	2.11	122.54	120.40
2	A	701	9QR	N29-C25-N26	2.22	120.72	117.25
3	A	702	NAP	O2A-PA-O1A	2.25	123.51	112.21
2	A	701	9QR	N8-C2-N1	2.28	120.82	117.25
3	A	702	NAP	C2A-N1A-C6A	2.28	122.72	118.77
4	A	703	UMP	P-O5'-C5'	2.53	125.26	118.30
2	A	701	9QR	C22-C27-N28	2.59	124.72	120.89
4	B	703	UMP	P-O5'-C5'	2.61	125.47	118.30
2	B	701	9QR	C2-N1-C6	3.08	120.34	116.97
2	A	701	9QR	C2-N1-C6	3.11	120.37	116.97
3	A	702	NAP	C3N-C2N-N1N	3.14	123.59	120.40
2	A	701	9QR	C14-O15-C16	3.73	127.62	117.91
2	B	701	9QR	C25-N26-C27	3.82	121.15	116.97
3	A	702	NAP	C3N-C7N-N7N	3.87	122.16	117.75
2	A	701	9QR	C25-N26-C27	4.55	121.95	116.97
2	A	701	9QR	C2-N3-C4	5.72	120.64	116.35
2	B	701	9QR	C25-N24-C23	6.48	121.21	116.35
2	A	701	9QR	C25-N24-C23	7.04	121.62	116.35
2	B	701	9QR	C2-N3-C4	7.62	122.06	116.35

There are no chirality outliers.

There are no torsion outliers.

There are no ring outliers.

1 monomer is involved in 3 short contacts:

Mol	Chain	Res	Type	Clashes	Symm-Clashes
3	A	702	NAP	3	0

5.7 Other polymers [i](#)

There are no such residues in this entry.

5.8 Polymer linkage issues [i](#)

There are no chain breaks in this entry.

6 Fit of model and data

6.1 Protein, DNA and RNA chains

In the following table, the column labelled ‘#RSRZ> 2’ contains the number (and percentage) of RSRZ outliers, followed by percent RSRZ outliers for the chain as percentile scores relative to all X-ray entries and entries of similar resolution. The OWAB column contains the minimum, median, 95th percentile and maximum values of the occupancy-weighted average B-factor per residue. The column labelled ‘Q< 0.9’ lists the number of (and percentage) of residues with an average occupancy less than 0.9.

Mol	Chain	Analysed	<RSRZ>	#RSRZ>2		OWAB(Å ²)	Q<0.9
1	A	537/608 (88%)	-0.10	24 (4%)	33 32	13, 27, 79, 120	0
1	B	536/608 (88%)	0.37	68 (12%)	3 3	13, 35, 114, 120	0
All	All	1073/1216 (88%)	0.13	92 (8%)	10 9	13, 30, 105, 120	0

All (92) RSRZ outliers are listed below:

Mol	Chain	Res	Type	RSRZ
1	B	137	ASP	11.0
1	A	1	MET	10.7
1	A	26	GLY	10.7
1	B	2	MET	10.4
1	B	139	ASP	10.3
1	B	1	MET	10.0
1	A	24	ASN	8.5
1	A	2	MET	7.6
1	B	135	ASP	7.5
1	A	230	ASN	6.8
1	B	231	ASN	6.6
1	B	27	LYS	6.4
1	A	85	THR	6.4
1	A	283	ASP	6.3
1	B	24	ASN	6.1
1	B	134	GLU	5.9
1	A	25	GLU	5.8
1	A	284	ASP	5.8
1	B	284	ASP	5.8
1	B	130	THR	5.2
1	B	28	LYS	5.2
1	B	29	ASN	5.1
1	B	25	GLU	4.9
1	B	136	PHE	4.9

Continued on next page...

Continued from previous page...

Mol	Chain	Res	Type	RSRZ
1	A	231	ASN	4.7
1	B	140	VAL	4.7
1	A	298	GLU	4.7
1	B	3	GLU	4.6
1	B	138	GLU	4.5
1	B	14	ILE	4.5
1	A	23	LYS	4.4
1	B	26	GLY	4.3
1	A	75	TYR	4.2
1	B	309	PRO	4.0
1	A	28	LYS	4.0
1	B	85	THR	4.0
1	B	75	TYR	3.9
1	B	116	PHE	3.7
1	B	23	LYS	3.7
1	B	230	ASN	3.6
1	B	132	LYS	3.5
1	A	29	ASN	3.4
1	B	131	LEU	3.3
1	A	84	GLU	3.3
1	B	283	ASP	3.3
1	B	13	ALA	3.3
1	B	80	TYR	3.2
1	B	128	SER	3.2
1	B	44	GLY	3.2
1	B	110	GLU	3.2
1	B	81	LEU	3.2
1	B	305	ASN	3.1
1	B	97	LYS	3.1
1	A	286	GLU	3.1
1	A	306	SER	3.0
1	B	127	LEU	3.0
1	B	307	ILE	2.9
1	B	73	LEU	2.8
1	B	144	ASN	2.8
1	A	375	PHE	2.7
1	A	14	ILE	2.7
1	B	165	GLY	2.7
1	B	151	VAL	2.7
1	B	164	ILE	2.6
1	B	43	LYS	2.6
1	B	298	GLU	2.6

Continued on next page...

Continued from previous page...

Mol	Chain	Res	Type	RSRZ
1	B	146	VAL	2.5
1	B	202	GLU	2.5
1	B	285	GLU	2.5
1	A	3	GLU	2.5
1	B	15	CYS	2.5
1	B	205	TYR	2.4
1	B	4	GLN	2.4
1	B	45	VAL	2.4
1	A	72	LYS	2.4
1	A	49	LYS	2.3
1	B	182	ILE	2.3
1	B	603	SER	2.3
1	A	287	GLU	2.2
1	B	9	PHE	2.2
1	B	67	GLU	2.2
1	B	35	TYR	2.1
1	B	102	VAL	2.1
1	B	163	ILE	2.1
1	B	111	SER	2.1
1	B	192	GLU	2.1
1	B	204	GLU	2.1
1	B	49	LYS	2.1
1	B	109	TRP	2.1
1	B	7	ASP	2.1
1	B	71	GLU	2.0
1	B	157	ASN	2.0

6.2 Non-standard residues in protein, DNA, RNA chains [i](#)

There are no non-standard protein/DNA/RNA residues in this entry.

6.3 Carbohydrates [i](#)

There are no carbohydrates in this entry.

6.4 Ligands [i](#)

In the following table, the Atoms column lists the number of modelled atoms in the group and the number defined in the chemical component dictionary. The B-factors column lists the minimum, median, 95th percentile and maximum values of B factors of atoms in the group. The column labelled 'Q< 0.9' lists the number of atoms with occupancy less than 0.9.

Mol	Type	Chain	Res	Atoms	RSCC	RSR	B-factors(\AA^2)	Q<0.9
2	9QR	B	701	31/31	0.62	0.32	56,92,120,120	0
5	PO4	A	704	5/5	0.77	0.28	92,92,100,100	0
3	NAP	B	702	48/48	0.80	0.22	60,80,99,101	0
2	9QR	A	701	31/31	0.82	0.22	22,51,77,81	0
5	PO4	B	704	5/5	0.86	0.29	96,98,99,99	0
3	NAP	A	702	48/48	0.96	0.08	23,35,45,47	0
4	UMP	A	703	20/20	0.97	0.07	17,19,21,21	0
4	UMP	B	703	20/20	0.98	0.08	20,23,29,31	0

6.5 Other polymers [i](#)

There are no such residues in this entry.