



wwPDB X-ray Structure Validation Summary Report ⓘ

Mar 10, 2018 – 09:53 pm GMT

PDB ID : 1A3L
Title : CATALYSIS OF A DISFAVORED REACTION: AN ANTIBODY EXO DIE
LS-ALDERASE-TSA-INHIBITOR COMPLEX AT 1.95 Å RESOLUTION
Authors : Heine, A.; Wilson, I.A.
Deposited on : 1998-01-22
Resolution : 1.95 Å(reported)

This is a wwPDB X-ray Structure Validation Summary Report for a publicly released PDB entry.

We welcome your comments at validation@mail.wwpdb.org

A user guide is available at

<https://www.wwpdb.org/validation/2017/XrayValidationReportHelp>

with specific help available everywhere you see the ⓘ symbol.

The following versions of software and data (see [references ⓘ](#)) were used in the production of this report:

MolProbity : 4.02b-467
Mogul : 1.7.3 (157068), CSD as539be (2018)
Xtriage (Phenix) : 1.13
EDS : trunk30967
Percentile statistics : 20171227.v01 (using entries in the PDB archive December 27th 2017)
Refmac : 5.8.0158
CCP4 : 7.0 (Gargrove)
Ideal geometry (proteins) : Engh & Huber (2001)
Ideal geometry (DNA, RNA) : Parkinson et al. (1996)
Validation Pipeline (wwPDB-VP) : trunk30967

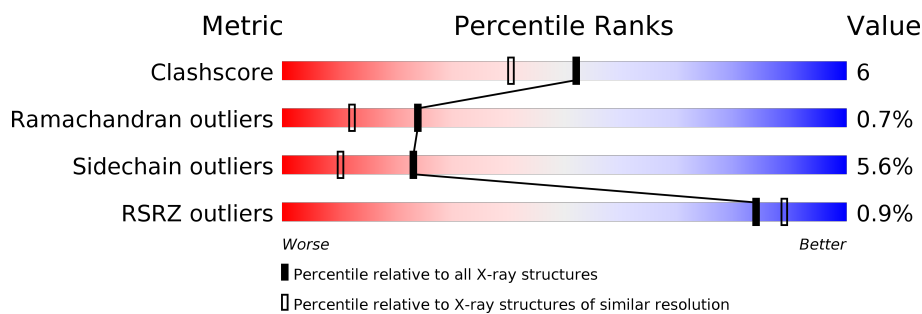
1 Overall quality at a glance

The following experimental techniques were used to determine the structure:

X-RAY DIFFRACTION

The reported resolution of this entry is 1.95 Å.

Percentile scores (ranging between 0-100) for global validation metrics of the entry are shown in the following graphic. The table shows the number of entries on which the scores are based.



Metric	Whole archive (#Entries)	Similar resolution (#Entries, resolution range(Å))
Clashscore	122126	2333 (1.96-1.96)
Ramachandran outliers	120053	2314 (1.96-1.96)
Sidechain outliers	120020	2314 (1.96-1.96)
RSRZ outliers	108989	2174 (1.96-1.96)

The table below summarises the geometric issues observed across the polymeric chains and their fit to the electron density. The red, orange, yellow and green segments on the lower bar indicate the fraction of residues that contain outliers for ≥ 3 , 2, 1 and 0 types of geometric quality criteria. A grey segment represents the fraction of residues that are not modelled. The numeric value for each fraction is indicated below the corresponding segment, with a dot representing fractions $\leq 5\%$. The upper red bar (where present) indicates the fraction of residues that have poor fit to the electron density. The numeric value is given above the bar.

Mol	Chain	Length	Quality of chain
1	L	217	
2	H	218	

2 Entry composition

There are 4 unique types of molecules in this entry. The entry contains 3635 atoms, of which 0 are hydrogens and 0 are deuteriums.

In the tables below, the ZeroOcc column contains the number of atoms modelled with zero occupancy, the AltConf column contains the number of residues with at least one atom in alternate conformation and the Trace column contains the number of residues modelled with at most 2 atoms.

- Molecule 1 is a protein called IMMUNOGLOBULIN FAB 13G5 (LIGHT CHAIN).

Mol	Chain	Residues	Atoms					ZeroOcc	AltConf	Trace
1	L	217	Total	C	N	O	S	0	0	0
			1673	1046	283	337	7			

There are 34 discrepancies between the modelled and reference sequences:

Chain	Residue	Modelled	Actual	Comment	Reference
L	3	VAL	LEU	CONFLICT	GB 1911624
L	4	LEU	MET	CONFLICT	GB 1911624
L	7	ALA	THR	CONFLICT	GB 1911624
L	8	ALA	PRO	CONFLICT	GB 1911624
L	9	PHE	LEU	CONFLICT	GB 1911624
L	11	ASN	LEU	CONFLICT	GB 1911624
L	14	THR	SER	CONFLICT	GB 1911624
L	17	ALA	ASP	CONFLICT	GB 1911624
L	18	SER	GLN	CONFLICT	GB 1911624
L	27	LYS	GLN	CONFLICT	GB 1911624
L	27B	LEU	ILE	CONFLICT	GB 1911624
L	27C	LEU	VAL	CONFLICT	GB 1911624
L	27D	ASN	HIS	CONFLICT	GB 1911624
L	30	ILE	ASN	CONFLICT	GB 1911624
L	31	ILE	THR	CONFLICT	GB 1911624
L	32	HIS	TYR	CONFLICT	GB 1911624
L	33	MET	LEU	CONFLICT	GB 1911624
L	34	TYR	GLU	CONFLICT	GB 1911624
L	45	GLN	LYS	CONFLICT	GB 1911624
L	50	GLN	LYS	CONFLICT	GB 1911624
L	51	MET	LEU	CONFLICT	GB 1911624
L	54	LEU	ARG	CONFLICT	GB 1911624
L	55	ALA	PHE	CONFLICT	GB 1911624
L	58	ALA	VAL	CONFLICT	GB 1911624
L	74	ARG	LYS	CONFLICT	GB 1911624
L	83	VAL	LEU	CONFLICT	GB 1911624
L	89	ALA	PHE	CONFLICT	GB 1911624

Continued on next page...

Continued from previous page...

Chain	Residue	Modelled	Actual	Comment	Reference
L	91	ASN	GLY	CONFLICT	GB 1911624
L	92	LEU	SER	CONFLICT	GB 1911624
L	93	GLU	LEU	CONFLICT	GB 1911624
L	94	LEU	VAL	CONFLICT	GB 1911624
L	96	TYR	TRP	CONFLICT	GB 1911624
L	168	THR	SER	CONFLICT	GB 1911624
L	183	LYS	GLU	CONFLICT	GB 1911624

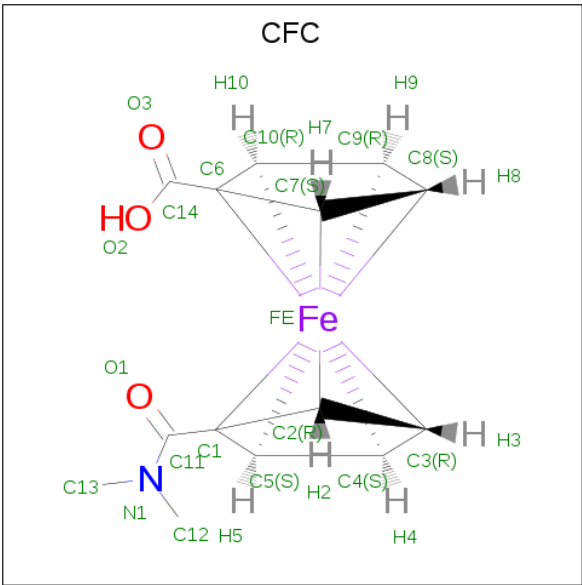
- Molecule 2 is a protein called IMMUNOGLOBULIN FAB 13G5 (HEAVY CHAIN).

Mol	Chain	Residues	Atoms					ZeroOcc	AltConf	Trace
2	H	218	Total	C	N	O	S	34	0	0
			1634	1037	264	327	6			

There are 19 discrepancies between the modelled and reference sequences:

Chain	Residue	Modelled	Actual	Comment	Reference
H	3	GLN	LYS	CONFLICT	EMBL Y08011
H	5	GLU	HIS	CONFLICT	EMBL Y08011
H	10	GLU	GLY	CONFLICT	EMBL Y08011
H	45	PHE	LEU	CONFLICT	EMBL Y08011
H	55	VAL	GLY	CONFLICT	EMBL Y08011
H	58	THR	ASN	CONFLICT	EMBL Y08011
H	59	ASN	TYR	CONFLICT	EMBL Y08011
H	64	ARG	LYS	CONFLICT	EMBL Y08011
H	68	ILE	THR	CONFLICT	EMBL Y08011
H	?	-	PHE	DELETION	EMBL Y08011
H	?	-	TYR	DELETION	EMBL Y08011
H	95	ALA	TYR	CONFLICT	EMBL Y08011
H	97	GLY	SER	CONFLICT	EMBL Y08011
H	98	TYR	SER	CONFLICT	EMBL Y08011
H	100	THR	TRP	CONFLICT	EMBL Y08011
H	100A	GLY	TYR	CONFLICT	EMBL Y08011
H	100B	GLY	PHE	CONFLICT	EMBL Y08011
H	102	TYR	VAL	CONFLICT	EMBL Y08011
H	108	SER	THR	CONFLICT	EMBL Y08011

- Molecule 3 is 1-CARBOXY-1'-[(DIMETHYLAMINO)-CARBONYL]FERROCENE (three-letter code: CFC) (formula: C₁₄H₁₅FeNO₃).



Mol	Chain	Residues	Atoms					ZeroOcc	AltConf
3	L	1	Total	C	Fe	N	O	0	0
			19	14	1	1	3		

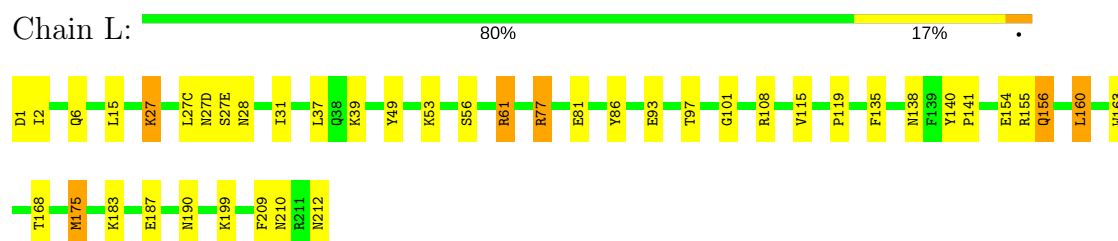
- Molecule 4 is water.

Mol	Chain	Residues	Atoms		ZeroOcc	AltConf
4	L	164	Total	O	0	0
			164	164		
4	H	145	Total	O	0	0
			145	145		

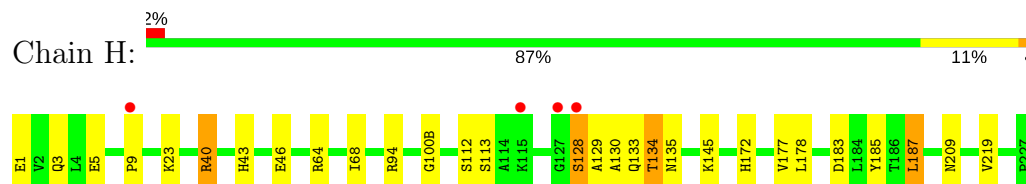
3 Residue-property plots [i](#)

These plots are drawn for all protein, RNA and DNA chains in the entry. The first graphic for a chain summarises the proportions of the various outlier classes displayed in the second graphic. The second graphic shows the sequence view annotated by issues in geometry and electron density. Residues are color-coded according to the number of geometric quality criteria for which they contain at least one outlier: green = 0, yellow = 1, orange = 2 and red = 3 or more. A red dot above a residue indicates a poor fit to the electron density ($RSRZ > 2$). Stretches of 2 or more consecutive residues without any outlier are shown as a green connector. Residues present in the sample, but not in the model, are shown in grey.

• Molecule 1: IMMUNOGLOBULIN FAB 13G5 (LIGHT CHAIN)



• Molecule 2: IMMUNOGLOBULIN FAB 13G5 (HEAVY CHAIN)



4 Data and refinement statistics

Property	Value	Source
Space group	C 1 2 1	Depositor
Cell constants a, b, c, α , β , γ	182.90Å 40.50Å 67.70Å 90.00° 109.00° 90.00°	Depositor
Resolution (Å)	10.00 – 1.95 39.43 – 1.95	Depositor EDS
% Data completeness (in resolution range)	90.0 (10.00-1.95) 93.6 (39.43-1.95)	Depositor EDS
R_{merge}	(Not available)	Depositor
R_{sym}	0.04	Depositor
$\langle I/\sigma(I) \rangle$ ¹	10.71 (at 1.95Å)	Xtriage
Refinement program	SHELXL-96	Depositor
R, R_{free}	0.188 , 0.265 0.190 , (Not available)	Depositor DCC
R_{free} test set	No test flags present.	wwPDB-VP
Wilson B-factor (Å ²)	14.8	Xtriage
Anisotropy	0.136	Xtriage
Bulk solvent k_{sol} (e/Å ³), B_{sol} (Å ²)	0.35 , 66.4	EDS
L-test for twinning ²	$\langle L \rangle = 0.48$, $\langle L^2 \rangle = 0.31$	Xtriage
Estimated twinning fraction	0.023 for -h-2*k,l	Xtriage
F_o, F_c correlation	0.93	EDS
Total number of atoms	3635	wwPDB-VP
Average B, all atoms (Å ²)	22.0	wwPDB-VP

Xtriage's analysis on translational NCS is as follows: *The largest off-origin peak in the Patterson function is 5.57% of the height of the origin peak. No significant pseudotranslation is detected.*

¹Intensities estimated from amplitudes.

²Theoretical values of $\langle |L| \rangle$, $\langle L^2 \rangle$ for acentric reflections are 0.5, 0.333 respectively for untwinned datasets, and 0.375, 0.2 for perfectly twinned datasets.

5 Model quality [i](#)

5.1 Standard geometry [i](#)

Bond lengths and bond angles in the following residue types are not validated in this section: CFC

The Z score for a bond length (or angle) is the number of standard deviations the observed value is removed from the expected value. A bond length (or angle) with $|Z| > 5$ is considered an outlier worth inspection. RMSZ is the root-mean-square of all Z scores of the bond lengths (or angles).

Mol	Chain	Bond lengths		Bond angles	
		RMSZ	$\# Z > 5$	RMSZ	$\# Z > 5$
1	L	0.35	0/1709	0.98	4/2318 (0.2%)
2	H	0.34	0/1681	0.90	3/2303 (0.1%)
All	All	0.34	0/3390	0.95	7/4621 (0.2%)

There are no bond length outliers.

The worst 5 of 7 bond angle outliers are listed below:

Mol	Chain	Res	Type	Atoms	Z	Observed(°)	Ideal(°)
1	L	155	ARG	NE-CZ-NH1	6.98	123.79	120.30
2	H	187	LEU	CA-CB-CG	6.25	129.68	115.30
1	L	77	ARG	NE-CZ-NH1	5.69	123.14	120.30
1	L	108	ARG	NE-CZ-NH1	5.49	123.04	120.30
2	H	40	ARG	NE-CZ-NH1	5.26	122.93	120.30

There are no chirality outliers.

There are no planarity outliers.

5.2 Too-close contacts [i](#)

In the following table, the Non-H and H(model) columns list the number of non-hydrogen atoms and hydrogen atoms in the chain respectively. The H(added) column lists the number of hydrogen atoms added and optimized by MolProbity. The Clashes column lists the number of clashes within the asymmetric unit, whereas Symm-Clashes lists symmetry related clashes.

Mol	Chain	Non-H	H(model)	H(added)	Clashes	Symm-Clashes
1	L	1673	0	1623	28	0
2	H	1634	0	1573	13	0
3	L	19	0	6	0	0
4	H	145	0	0	5	0

Continued on next page...

Continued from previous page...

Mol	Chain	Non-H	H(model)	H(added)	Clashes	Symm-Clashes
4	L	164	0	0	5	0
All	All	3635	0	3202	39	0

The all-atom clashscore is defined as the number of clashes found per 1000 atoms (including hydrogen atoms). The all-atom clashscore for this structure is 6.

The worst 5 of 39 close contacts within the same asymmetric unit are listed below, sorted by their clash magnitude.

Atom-1	Atom-2	Interatomic distance (Å)	Clash overlap (Å)
2:H:3:GLN:HB3	2:H:5:GLU:OE2	1.97	0.65
2:H:40:ARG:O	2:H:43:HIS:HB2	1.97	0.64
2:H:23:LYS:HD2	4:H:316:HOH:O	1.99	0.62
2:H:5:GLU:HG2	4:H:240:HOH:O	1.99	0.61
1:L:27(D):ASN:HB3	1:L:28:ASN:OD1	2.00	0.61

There are no symmetry-related clashes.

5.3 Torsion angles [i](#)

5.3.1 Protein backbone [i](#)

In the following table, the Percentiles column shows the percent Ramachandran outliers of the chain as a percentile score with respect to all X-ray entries followed by that with respect to entries of similar resolution.

The Analysed column shows the number of residues for which the backbone conformation was analysed, and the total number of residues.

Mol	Chain	Analysed	Favoured	Allowed	Outliers	Percentiles	
1	L	215/217 (99%)	212 (99%)	3 (1%)	0	100	100
2	H	216/218 (99%)	208 (96%)	5 (2%)	3 (1%)	12	3
All	All	431/435 (99%)	420 (97%)	8 (2%)	3 (1%)	24	12

All (3) Ramachandran outliers are listed below:

Mol	Chain	Res	Type
2	H	129	ALA
2	H	134	THR
2	H	130	ALA

5.3.2 Protein sidechains [i](#)

In the following table, the Percentiles column shows the percent sidechain outliers of the chain as a percentile score with respect to all X-ray entries followed by that with respect to entries of similar resolution.

The Analysed column shows the number of residues for which the sidechain conformation was analysed, and the total number of residues.

Mol	Chain	Analysed	Rotameric	Outliers	Percentiles	
1	L	189/189 (100%)	182 (96%)	7 (4%)	37	24
2	H	183/183 (100%)	169 (92%)	14 (8%)	14	4
All	All	372/372 (100%)	351 (94%)	21 (6%)	23	10

5 of 21 residues with a non-rotameric sidechain are listed below:

Mol	Chain	Res	Type
2	H	64	ARG
2	H	112	SER
2	H	145	LYS
2	H	46	GLU
2	H	187	LEU

Some sidechains can be flipped to improve hydrogen bonding and reduce clashes. All (5) such sidechains are listed below:

Mol	Chain	Res	Type
1	L	6	GLN
1	L	156	GLN
1	L	190	ASN
1	L	212	ASN
2	H	172	HIS

5.3.3 RNA [i](#)

There are no RNA molecules in this entry.

5.4 Non-standard residues in protein, DNA, RNA chains [i](#)

There are no non-standard protein/DNA/RNA residues in this entry.

5.5 Carbohydrates [i](#)

There are no carbohydrates in this entry.

5.6 Ligand geometry [i](#)

1 ligand is modelled in this entry.

In the following table, the Counts columns list the number of bonds (or angles) for which Mogul statistics could be retrieved, the number of bonds (or angles) that are observed in the model and the number of bonds (or angles) that are defined in the Chemical Component Dictionary. The Link column lists molecule types, if any, to which the group is linked. The Z score for a bond length (or angle) is the number of standard deviations the observed value is removed from the expected value. A bond length (or angle) with $|Z| > 2$ is considered an outlier worth inspection. RMSZ is the root-mean-square of all Z scores of the bond lengths (or angles).

Mol	Type	Chain	Res	Link	Bond lengths			Bond angles		
					Counts	RMSZ	$\# Z > 2$	Counts	RMSZ	$\# Z > 2$
3	CFC	L	213	-	4,28,28	2.03	2 (50%)	5,90,90	1.51	2 (40%)

In the following table, the Chirals column lists the number of chiral outliers, the number of chiral centers analysed, the number of these observed in the model and the number defined in the Chemical Component Dictionary. Similar counts are reported in the Torsion and Rings columns. '-' means no outliers of that kind were identified.

Mol	Type	Chain	Res	Link	Chirals	Torsions	Rings
3	CFC	L	213	-	-	0/4/232/232	0/2/10/10

All (2) bond length outliers are listed below:

Mol	Chain	Res	Type	Atoms	Z	Observed(Å)	Ideal(Å)
3	L	213	CFC	C11-N1	-2.45	1.31	1.34
3	L	213	CFC	O1-C11	3.23	1.27	1.22

All (2) bond angle outliers are listed below:

Mol	Chain	Res	Type	Atoms	Z	Observed(°)	Ideal(°)
3	L	213	CFC	C12-N1-C11	-2.04	112.01	122.34
3	L	213	CFC	C13-N1-C11	2.40	134.50	122.34

There are no chirality outliers.

There are no torsion outliers.

There are no ring outliers.

No monomer is involved in short contacts.

5.7 Other polymers [i](#)

There are no such residues in this entry.

5.8 Polymer linkage issues [i](#)

There are no chain breaks in this entry.

6 Fit of model and data [i](#)

6.1 Protein, DNA and RNA chains [i](#)

In the following table, the column labelled ‘#RSRZ> 2’ contains the number (and percentage) of RSRZ outliers, followed by percent RSRZ outliers for the chain as percentile scores relative to all X-ray entries and entries of similar resolution. The OWAB column contains the minimum, median, 95th percentile and maximum values of the occupancy-weighted average B-factor per residue. The column labelled ‘Q< 0.9’ lists the number of (and percentage) of residues with an average occupancy less than 0.9.

Mol	Chain	Analysed	<RSRZ>	#RSRZ>2	OWAB(Å ²)	Q<0.9
1	L	217/217 (100%)	-0.27	0 100 100	11, 20, 35, 64	0
2	H	213/218 (97%)	-0.17	4 (1%) 66 75	12, 18, 41, 73	0
All	All	430/435 (98%)	-0.22	4 (0%) 84 89	11, 19, 38, 73	0

All (4) RSRZ outliers are listed below:

Mol	Chain	Res	Type	RSRZ
2	H	128	SER	6.7
2	H	115	LYS	2.5
2	H	127	GLY	2.3
2	H	9	PRO	2.1

6.2 Non-standard residues in protein, DNA, RNA chains [i](#)

There are no non-standard protein/DNA/RNA residues in this entry.

6.3 Carbohydrates [i](#)

There are no carbohydrates in this entry.

6.4 Ligands [i](#)

In the following table, the Atoms column lists the number of modelled atoms in the group and the number defined in the chemical component dictionary. The B-factors column lists the minimum, median, 95th percentile and maximum values of B factors of atoms in the group. The column labelled ‘Q< 0.9’ lists the number of atoms with occupancy less than 0.9.

Mol	Type	Chain	Res	Atoms	RSCC	RSR	B-factors(Å ²)	Q<0.9
3	CFC	L	213	19/19	0.98	0.08	8,13,22,24	0

6.5 Other polymers [i](#)

There are no such residues in this entry.