



wwPDB X-ray Structure Validation Summary Report ⓘ

Mar 9, 2018 – 04:31 am GMT

PDB ID : 2A40
Title : Ternary complex of the WH2 domain of WAVE with Actin-DNAse I
Authors : Chereau, D.; Kerff, F.; Dominguez, R.
Deposited on : 2005-06-27
Resolution : 1.80 Å(reported)

This is a wwPDB X-ray Structure Validation Summary Report for a publicly released PDB entry.

We welcome your comments at validation@mail.wwpdb.org

A user guide is available at

<https://www.wwpdb.org/validation/2017/XrayValidationReportHelp>

with specific help available everywhere you see the ⓘ symbol.

The following versions of software and data (see [references ⓘ](#)) were used in the production of this report:

MolProbity : 4.02b-467
Mogul : 1.7.3 (157068), CSD as539be (2018)
Xtriage (Phenix) : 1.13
EDS : trunk30967
Percentile statistics : 20171227.v01 (using entries in the PDB archive December 27th 2017)
Refmac : 5.8.0158
CCP4 : 7.0 (Gargrove)
Ideal geometry (proteins) : Engh & Huber (2001)
Ideal geometry (DNA, RNA) : Parkinson et al. (1996)
Validation Pipeline (wwPDB-VP) : trunk30967

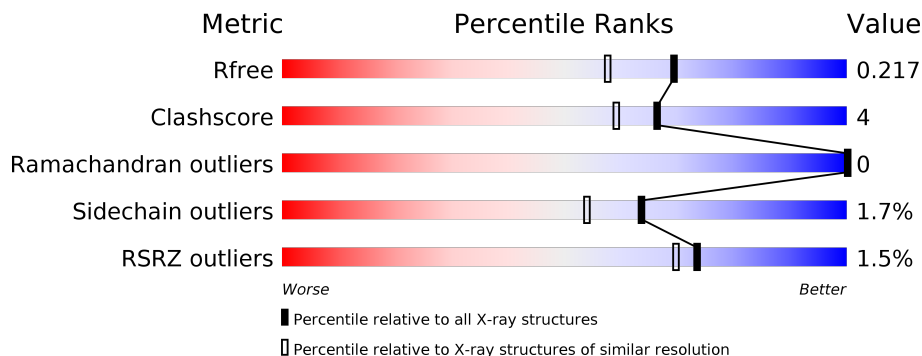
1 Overall quality at a glance

The following experimental techniques were used to determine the structure:

X-RAY DIFFRACTION

The reported resolution of this entry is 1.80 Å.

Percentile scores (ranging between 0-100) for global validation metrics of the entry are shown in the following graphic. The table shows the number of entries on which the scores are based.



Metric	Whole archive (#Entries)	Similar resolution (#Entries, resolution range(Å))
R_{free}	111664	5253 (1.80-1.80)
Clashscore	122126	6077 (1.80-1.80)
Ramachandran outliers	120053	6011 (1.80-1.80)
Sidechain outliers	120020	6010 (1.80-1.80)
RSRZ outliers	108989	5157 (1.80-1.80)

The table below summarises the geometric issues observed across the polymeric chains and their fit to the electron density. The red, orange, yellow and green segments on the lower bar indicate the fraction of residues that contain outliers for ≥ 3 , 2, 1 and 0 types of geometric quality criteria. A grey segment represents the fraction of residues that are not modelled. The numeric value for each fraction is indicated below the corresponding segment, with a dot representing fractions $\leq 5\%$. The upper red bar (where present) indicates the fraction of residues that have poor fit to the electron density. The numeric value is given above the bar.

Mol	Chain	Length	Quality of chain
1	A	375	<div> <div>3%</div> <div>87%</div> <div>9%</div> <div>•</div> </div>
1	D	375	<div> <div>2%</div> <div>84%</div> <div>12%</div> <div>•</div> </div>
2	B	260	<div> <div>94%</div> <div>6%</div> </div>
2	E	260	<div> <div>92%</div> <div>7%</div> </div>
3	C	32	<div> <div>3%</div> <div>56%</div> <div>9%</div> <div>•</div> <div>31%</div> </div>
3	F	32	<div> <div>3%</div> <div>63%</div> <div>6%</div> <div>31%</div> </div>

2 Entry composition [i](#)

There are 9 unique types of molecules in this entry. The entry contains 11357 atoms, of which 0 are hydrogens and 0 are deuteriums.

In the tables below, the ZeroOcc column contains the number of atoms modelled with zero occupancy, the AltConf column contains the number of residues with at least one atom in alternate conformation and the Trace column contains the number of residues modelled with at most 2 atoms.

- Molecule 1 is a protein called Actin, alpha skeletal muscle.

Mol	Chain	Residues	Atoms					ZeroOcc	AltConf	Trace
1	A	362	Total	C	N	O	S	0	15	0
			2899	1843	481	552	23			
1	D	362	Total	C	N	O	S	0	12	0
			2878	1829	477	549	23			

- Molecule 2 is a protein called Deoxyribonuclease-1.

Mol	Chain	Residues	Atoms					ZeroOcc	AltConf	Trace
2	B	260	Total	C	N	O	S	0	5	0
			2071	1312	345	406	8			
2	E	260	Total	C	N	O	S	0	12	0
			2109	1340	351	410	8			

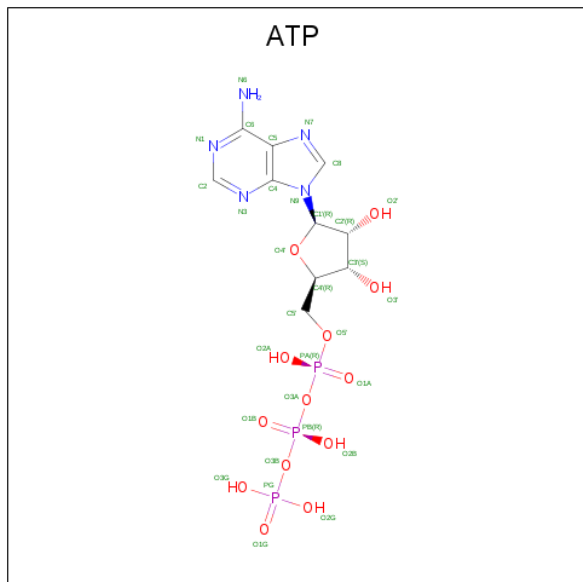
- Molecule 3 is a protein called Wiskott-Aldrich syndrome protein family member 2.

Mol	Chain	Residues	Atoms				ZeroOcc	AltConf	Trace
3	C	22	Total	C	N	O	0	1	0
			181	109	36	36			
3	F	22	Total	C	N	O	0	1	0
			181	109	36	36			

- Molecule 4 is CALCIUM ION (three-letter code: CA) (formula: Ca).

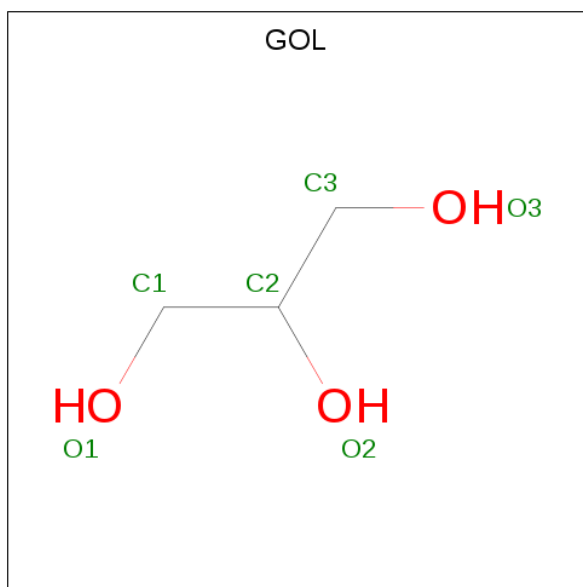
Mol	Chain	Residues	Atoms		ZeroOcc	AltConf
4	B	1	Total	Ca	0	0
			1	1		
4	A	1	Total	Ca	0	0
			1	1		
4	D	1	Total	Ca	0	0
			1	1		
4	E	1	Total	Ca	0	0
			1	1		

- Molecule 5 is ADENOSINE-5'-TRIPHOSPHATE (three-letter code: ATP) (formula: $C_{10}H_{16}N_5O_{13}P_3$).



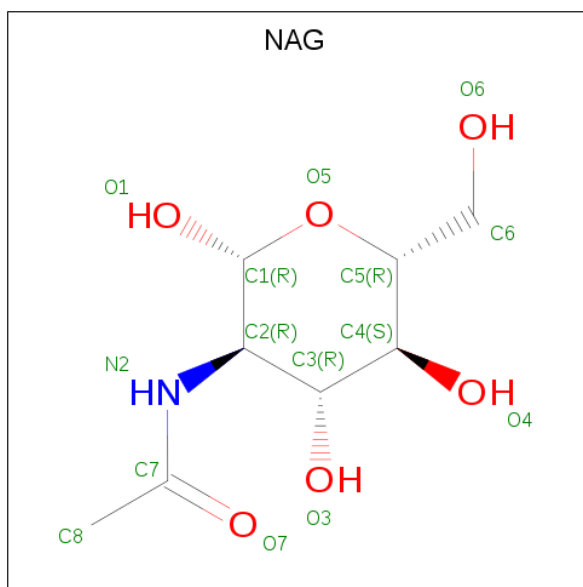
Mol	Chain	Residues	Atoms					ZeroOcc	AltConf
5	A	1	Total	C	N	O	P	0	0
			31	10	5	13	3		
5	D	1	Total	C	N	O	P	0	0
			31	10	5	13	3		

- Molecule 6 is GLYCEROL (three-letter code: GOL) (formula: $C_3H_8O_3$).



Mol	Chain	Residues	Atoms			ZeroOcc	AltConf
6	A	1	Total	C	O	0	0
			6	3	3		
6	B	1	Total	C	O	0	0
			6	3	3		

- Molecule 7 is N-ACETYL-D-GLUCOSAMINE (three-letter code: NAG) (formula: $C_8H_{15}NO_6$).



Mol	Chain	Residues	Atoms				ZeroOcc	AltConf
7	B	1	Total	C	N	O	0	0
			14	8	1	5		
7	B	1	Total	C	N	O	0	0
			14	8	1	5		
7	E	1	Total	C	N	O	0	0
			14	8	1	5		
7	E	1	Total	C	N	O	0	0
			14	8	1	5		

- Molecule 8 is MAGNESIUM ION (three-letter code: MG) (formula: Mg).

Mol	Chain	Residues	Atoms		ZeroOcc	AltConf
8	B	1	Total	Mg	0	0
			1	1		
8	E	1	Total	Mg	0	0
			1	1		

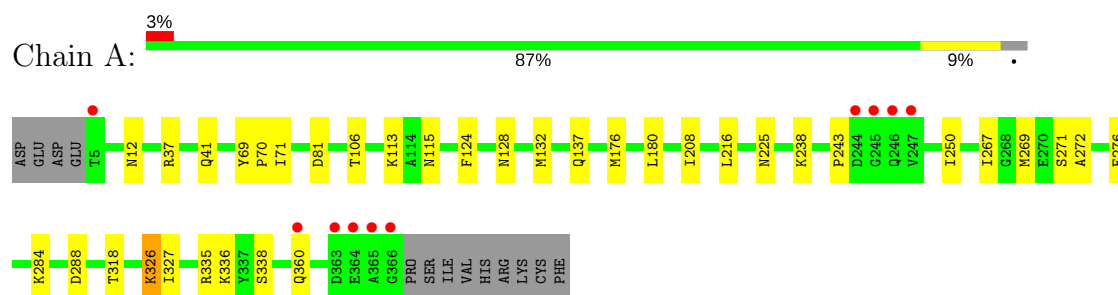
- Molecule 9 is water.

Mol	Chain	Residues	Atoms		ZeroOcc	AltConf
9	A	288	Total 288	O 288	0	0
9	B	167	Total 167	O 167	0	0
9	C	7	Total 7	O 7	0	0
9	D	253	Total 253	O 253	0	0
9	E	183	Total 183	O 183	0	0
9	F	4	Total 4	O 4	0	0

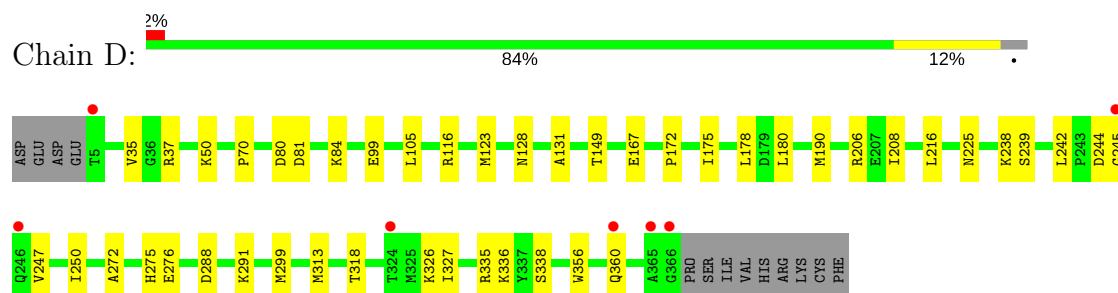
3 Residue-property plots [i](#)

These plots are drawn for all protein, RNA and DNA chains in the entry. The first graphic for a chain summarises the proportions of the various outlier classes displayed in the second graphic. The second graphic shows the sequence view annotated by issues in geometry and electron density. Residues are color-coded according to the number of geometric quality criteria for which they contain at least one outlier: green = 0, yellow = 1, orange = 2 and red = 3 or more. A red dot above a residue indicates a poor fit to the electron density ($RSRZ > 2$). Stretches of 2 or more consecutive residues without any outlier are shown as a green connector. Residues present in the sample, but not in the model, are shown in grey.

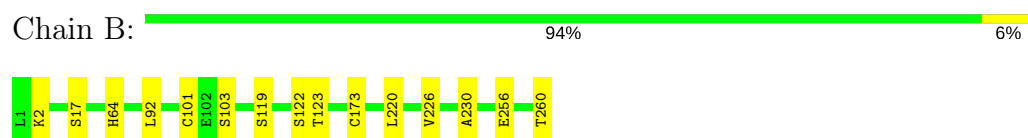
- Molecule 1: Actin, alpha skeletal muscle



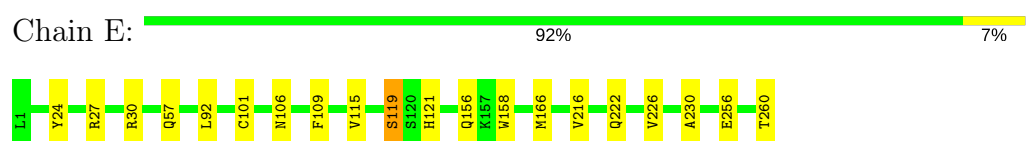
- Molecule 1: Actin, alpha skeletal muscle



- Molecule 2: Deoxyribonuclease-1



- Molecule 2: Deoxyribonuclease-1

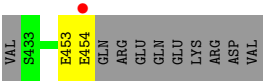


- Molecule 3: Wiskott-Aldrich syndrome protein family member 2





● Molecule 3: Wiskott-Aldrich syndrome protein family member 2



4 Data and refinement statistics

Property	Value	Source
Space group	P 1 21 1	Depositor
Cell constants a, b, c, α , β , γ	118.72Å 41.60Å 153.05Å 90.00° 108.79° 90.00°	Depositor
Resolution (Å)	47.51 – 1.80 47.49 – 1.80	Depositor EDS
% Data completeness (in resolution range)	80.6 (47.51-1.80) 80.6 (47.49-1.80)	Depositor EDS
R_{merge}	0.10	Depositor
R_{sym}	(Not available)	Depositor
$\langle I/\sigma(I) \rangle$ ¹	6.48 (at 1.79Å)	Xtriage
Refinement program	REFMAC 5.2.0005	Depositor
R, R_{free}	0.166 , 0.215 0.167 , 0.217	Depositor DCC
R_{free} test set	5386 reflections (5.04%)	wwPDB-VP
Wilson B-factor (Å ²)	22.2	Xtriage
Anisotropy	0.327	Xtriage
Bulk solvent k_{sol} (e/Å ³), B_{sol} (Å ²)	0.36 , 43.4	EDS
L-test for twinning ²	$\langle L \rangle = 0.50$, $\langle L^2 \rangle = 0.34$	Xtriage
Estimated twinning fraction	No twinning to report.	Xtriage
F_o, F_c correlation	0.97	EDS
Total number of atoms	11357	wwPDB-VP
Average B, all atoms (Å ²)	30.0	wwPDB-VP

Xtriage's analysis on translational NCS is as follows: *The analyses of the Patterson function reveals a significant off-origin peak that is 84.91 % of the origin peak, indicating pseudo-translational symmetry. The chance of finding a peak of this or larger height randomly in a structure without pseudo-translational symmetry is equal to 1.4638e-07. The detected translational NCS is most likely also responsible for the elevated intensity ratio.*

¹Intensities estimated from amplitudes.

²Theoretical values of $\langle |L| \rangle$, $\langle L^2 \rangle$ for acentric reflections are 0.5, 0.333 respectively for untwinned datasets, and 0.375, 0.2 for perfectly twinned datasets.

5 Model quality [i](#)

5.1 Standard geometry [i](#)

Bond lengths and bond angles in the following residue types are not validated in this section: GOL, MG, NAG, CA, HIC, ATP

The Z score for a bond length (or angle) is the number of standard deviations the observed value is removed from the expected value. A bond length (or angle) with $|Z| > 5$ is considered an outlier worth inspection. RMSZ is the root-mean-square of all Z scores of the bond lengths (or angles).

Mol	Chain	Bond lengths		Bond angles	
		RMSZ	# Z >5	RMSZ	# Z >5
1	A	0.63	0/2988	0.71	0/4043
1	D	0.57	0/2961	0.65	0/4007
2	B	0.65	2/2132 (0.1%)	0.73	1/2902 (0.0%)
2	E	0.60	0/2192	0.73	1/2981 (0.0%)
3	C	0.48	0/184	0.51	0/244
3	F	0.40	0/184	0.47	0/244
All	All	0.61	2/10641 (0.0%)	0.70	2/14421 (0.0%)

All (2) bond length outliers are listed below:

Mol	Chain	Res	Type	Atoms	Z	Observed(Å)	Ideal(Å)
2	B	122	SER	C-O	6.28	1.35	1.23
2	B	173	CYS	CB-SG	5.49	1.91	1.82

All (2) bond angle outliers are listed below:

Mol	Chain	Res	Type	Atoms	Z	Observed(°)	Ideal(°)
2	B	123	THR	CA-CB-CG2	-5.40	104.85	112.40
2	E	166	MET	CG-SD-CE	5.37	108.79	100.20

There are no chirality outliers.

There are no planarity outliers.

5.2 Too-close contacts [i](#)

In the following table, the Non-H and H(model) columns list the number of non-hydrogen atoms and hydrogen atoms in the chain respectively. The H(added) column lists the number of hydrogen atoms added and optimized by MolProbity. The Clashes column lists the number of clashes within the asymmetric unit, whereas Symm-Clashes lists symmetry related clashes.

Mol	Chain	Non-H	H(model)	H(added)	Clashes	Symm-Clashes
1	A	2899	0	2912	30	0
1	D	2878	0	2886	35	0
2	B	2071	0	2014	8	0
2	E	2109	0	2074	15	0
3	C	181	0	182	2	0
3	F	181	0	182	1	0
4	A	1	0	0	0	0
4	B	1	0	0	0	0
4	D	1	0	0	0	0
4	E	1	0	0	0	0
5	A	31	0	12	0	0
5	D	31	0	12	0	0
6	A	6	0	8	0	0
6	B	6	0	8	0	0
7	B	28	0	25	0	0
7	E	28	0	25	0	0
8	B	1	0	0	0	0
8	E	1	0	0	0	0
9	A	288	0	0	8	0
9	B	167	0	0	2	1
9	C	7	0	0	0	0
9	D	253	0	0	4	0
9	E	183	0	0	4	0
9	F	4	0	0	0	0
All	All	11357	0	10340	90	1

The all-atom clashscore is defined as the number of clashes found per 1000 atoms (including hydrogen atoms). The all-atom clashscore for this structure is 4.

The worst 5 of 90 close contacts within the same asymmetric unit are listed below, sorted by their clash magnitude.

Atom-1	Atom-2	Interatomic distance (Å)	Clash overlap (Å)
1:A:12[B]:ASN:ND2	9:A:1461:HOH:O	1.62	1.30
2:E:121[B]:HIS:HD2	9:E:1433:HOH:O	1.19	1.21
1:D:299:MET:HE3	1:D:313[B]:MET:HG3	1.30	1.11
1:D:299:MET:CE	1:D:313[B]:MET:HG3	1.80	1.11
1:D:37:ARG:NH2	1:D:84:LYS:HE3	1.67	1.08

All (1) symmetry-related close contacts are listed below. The label for Atom-2 includes the symmetry operator and encoded unit-cell translations to be applied.

Atom-1	Atom-2	Interatomic distance (Å)	Clash overlap (Å)
9:B:1464:HOH:O	9:B:1550:HOH:O[2_556]	2.18	0.02

5.3 Torsion angles [i](#)

5.3.1 Protein backbone [i](#)

In the following table, the Percentiles column shows the percent Ramachandran outliers of the chain as a percentile score with respect to all X-ray entries followed by that with respect to entries of similar resolution.

The Analysed column shows the number of residues for which the backbone conformation was analysed, and the total number of residues.

Mol	Chain	Analysed	Favoured	Allowed	Outliers	Percentiles	
1	A	374/375 (100%)	369 (99%)	5 (1%)	0	100	100
1	D	371/375 (99%)	365 (98%)	6 (2%)	0	100	100
2	B	263/260 (101%)	255 (97%)	8 (3%)	0	100	100
2	E	270/260 (104%)	266 (98%)	4 (2%)	0	100	100
3	C	21/32 (66%)	21 (100%)	0	0	100	100
3	F	21/32 (66%)	21 (100%)	0	0	100	100
All	All	1320/1334 (99%)	1297 (98%)	23 (2%)	0	100	100

There are no Ramachandran outliers to report.

5.3.2 Protein sidechains [i](#)

In the following table, the Percentiles column shows the percent sidechain outliers of the chain as a percentile score with respect to all X-ray entries followed by that with respect to entries of similar resolution.

The Analysed column shows the number of residues for which the sidechain conformation was analysed, and the total number of residues.

Mol	Chain	Analysed	Rotameric	Outliers	Percentiles	
1	A	319/317 (101%)	314 (98%)	5 (2%)	65	57
1	D	316/317 (100%)	310 (98%)	6 (2%)	60	49
2	B	234/229 (102%)	232 (99%)	2 (1%)	81	77
2	E	241/229 (105%)	238 (99%)	3 (1%)	74	68

Continued on next page...

Continued from previous page...

Mol	Chain	Analysed	Rotameric	Outliers	Percentiles	
3	C	20/29 (69%)	17 (85%)	3 (15%)	3	0
3	F	20/29 (69%)	19 (95%)	1 (5%)	27	11
All	All	1150/1150 (100%)	1130 (98%)	20 (2%)	63	54

5 of 20 residues with a non-rotameric sidechain are listed below:

Mol	Chain	Res	Type
3	C	454	GLU
1	D	50	LYS
2	E	101	CYS
3	C	441[A]	SER
3	C	441[B]	SER

Some sidechains can be flipped to improve hydrogen bonding and reduce clashes. 5 of 18 such sidechains are listed below:

Mol	Chain	Res	Type
2	B	243	ASN
1	D	92	ASN
2	E	61	ASN
2	B	161	ASN
2	B	236	GLN

5.3.3 RNA ⓘ

There are no RNA molecules in this entry.

5.4 Non-standard residues in protein, DNA, RNA chains ⓘ

2 non-standard protein/DNA/RNA residues are modelled in this entry.

In the following table, the Counts columns list the number of bonds (or angles) for which Mogul statistics could be retrieved, the number of bonds (or angles) that are observed in the model and the number of bonds (or angles) that are defined in the Chemical Component Dictionary. The Link column lists molecule types, if any, to which the group is linked. The Z score for a bond length (or angle) is the number of standard deviations the observed value is removed from the expected value. A bond length (or angle) with $|Z| > 2$ is considered an outlier worth inspection. RMSZ is the root-mean-square of all Z scores of the bond lengths (or angles).

Mol	Type	Chain	Res	Link	Bond lengths			Bond angles		
					Counts	RMSZ	# Z > 2	Counts	RMSZ	# Z > 2
1	HIC	A	73	1	10,11,12	1.22	2 (20%)	7,14,16	0.74	0
1	HIC	D	73	1	10,11,12	1.05	1 (10%)	7,14,16	0.76	0

In the following table, the Chirals column lists the number of chiral outliers, the number of chiral centers analysed, the number of these observed in the model and the number defined in the Chemical Component Dictionary. Similar counts are reported in the Torsion and Rings columns. '-' means no outliers of that kind were identified.

Mol	Type	Chain	Res	Link	Chirals	Torsions	Rings
1	HIC	A	73	1	-	0/4/6/8	0/1/1/1
1	HIC	D	73	1	-	0/4/6/8	0/1/1/1

All (3) bond length outliers are listed below:

Mol	Chain	Res	Type	Atoms	Z	Observed(Å)	Ideal(Å)
1	D	73	HIC	CD2-NE2	-2.19	1.34	1.38
1	A	73	HIC	CD2-NE2	-2.10	1.35	1.38
1	A	73	HIC	CD2-CG	2.05	1.39	1.36

There are no bond angle outliers.

There are no chirality outliers.

There are no torsion outliers.

There are no ring outliers.

No monomer is involved in short contacts.

5.5 Carbohydrates [i](#)

There are no carbohydrates in this entry.

5.6 Ligand geometry [i](#)

Of 14 ligands modelled in this entry, 6 are monoatomic - leaving 8 for Mogul analysis.

In the following table, the Counts columns list the number of bonds (or angles) for which Mogul statistics could be retrieved, the number of bonds (or angles) that are observed in the model and the number of bonds (or angles) that are defined in the Chemical Component Dictionary. The Link column lists molecule types, if any, to which the group is linked. The Z score for a bond length (or angle) is the number of standard deviations the observed value is removed from the

expected value. A bond length (or angle) with $|Z| > 2$ is considered an outlier worth inspection. RMSZ is the root-mean-square of all Z scores of the bond lengths (or angles).

Mol	Type	Chain	Res	Link	Bond lengths			Bond angles		
					Counts	RMSZ	$\# Z > 2$	Counts	RMSZ	$\# Z > 2$
5	ATP	A	1379	4	27,33,33	1.20	2 (7%)	27,52,52	1.55	3 (11%)
6	GOL	A	1383	-	5,5,5	0.35	0	5,5,5	0.86	0
6	GOL	B	1384	-	5,5,5	0.44	0	5,5,5	0.62	0
7	NAG	B	270	2,7	14,14,15	0.50	0	17,19,21	1.07	2 (11%)
7	NAG	B	271	7	14,14,15	0.57	0	17,19,21	1.17	2 (11%)
5	ATP	D	1380	4	27,33,33	1.11	1 (3%)	27,52,52	1.87	3 (11%)
7	NAG	E	270	2,7	14,14,15	0.64	0	17,19,21	1.11	1 (5%)
7	NAG	E	271	7	14,14,15	0.45	0	17,19,21	1.26	2 (11%)

In the following table, the Chirals column lists the number of chiral outliers, the number of chiral centers analysed, the number of these observed in the model and the number defined in the Chemical Component Dictionary. Similar counts are reported in the Torsion and Rings columns. '-' means no outliers of that kind were identified.

Mol	Type	Chain	Res	Link	Chirals	Torsions	Rings
5	ATP	A	1379	4	-	0/18/38/38	0/3/3/3
6	GOL	A	1383	-	-	0/4/4/4	0/0/0/0
6	GOL	B	1384	-	-	0/4/4/4	0/0/0/0
7	NAG	B	270	2,7	-	0/6/23/26	0/1/1/1
7	NAG	B	271	7	-	0/6/23/26	0/1/1/1
5	ATP	D	1380	4	-	0/18/38/38	0/3/3/3
7	NAG	E	270	2,7	-	0/6/23/26	0/1/1/1
7	NAG	E	271	7	-	0/6/23/26	0/1/1/1

All (3) bond length outliers are listed below:

Mol	Chain	Res	Type	Atoms	Z	Observed(Å)	Ideal(Å)
5	D	1380	ATP	C5-C4	2.46	1.46	1.40
5	A	1379	ATP	C5-C4	2.80	1.46	1.40
5	A	1379	ATP	PG-O3B	2.87	1.64	1.60

The worst 5 of 13 bond angle outliers are listed below:

Mol	Chain	Res	Type	Atoms	Z	Observed(°)	Ideal(°)
5	D	1380	ATP	N3-C2-N1	-6.87	122.98	128.86
5	A	1379	ATP	N3-C2-N1	-5.31	124.32	128.86
7	E	270	NAG	O5-C1-C2	-3.46	106.75	111.52
7	B	271	NAG	C4-C3-C2	-2.61	107.20	111.02

Continued on next page...

Continued from previous page...

Mol	Chain	Res	Type	Atoms	Z	Observed(°)	Ideal(°)
5	D	1380	ATP	C4'-O4'-C1'	-2.22	107.52	109.83

There are no chirality outliers.

There are no torsion outliers.

There are no ring outliers.

No monomer is involved in short contacts.

5.7 Other polymers [i](#)

There are no such residues in this entry.

5.8 Polymer linkage issues [i](#)

There are no chain breaks in this entry.

6 Fit of model and data [i](#)

6.1 Protein, DNA and RNA chains [i](#)

In the following table, the column labelled ‘#RSRZ> 2’ contains the number (and percentage) of RSRZ outliers, followed by percent RSRZ outliers for the chain as percentile scores relative to all X-ray entries and entries of similar resolution. The OWAB column contains the minimum, median, 95th percentile and maximum values of the occupancy-weighted average B-factor per residue. The column labelled ‘Q< 0.9’ lists the number of (and percentage) of residues with an average occupancy less than 0.9.

Mol	Chain	Analysed	<RSRZ>	#RSRZ>2	OWAB(Å ²)	Q<0.9
1	A	361/375 (96%)	-0.20	10 (2%) 53 48	19, 26, 40, 61	0
1	D	361/375 (96%)	-0.14	7 (1%) 66 63	21, 30, 44, 61	0
2	B	260/260 (100%)	-0.29	0 100 100	23, 28, 41, 55	0
2	E	260/260 (100%)	-0.43	0 100 100	22, 27, 37, 50	0
3	C	22/32 (68%)	0.41	1 (4%) 33 28	34, 40, 55, 59	0
3	F	22/32 (68%)	0.76	1 (4%) 33 28	33, 43, 53, 61	0
All	All	1286/1334 (96%)	-0.22	19 (1%) 73 70	19, 28, 43, 61	0

The worst 5 of 19 RSRZ outliers are listed below:

Mol	Chain	Res	Type	RSRZ
1	D	366	GLY	6.4
1	D	365	ALA	5.7
1	A	365	ALA	4.6
1	A	366	GLY	4.6
1	A	5	THR	4.3

6.2 Non-standard residues in protein, DNA, RNA chains [i](#)

In the following table, the Atoms column lists the number of modelled atoms in the group and the number defined in the chemical component dictionary. The B-factors column lists the minimum, median, 95th percentile and maximum values of B factors of atoms in the group. The column labelled ‘Q< 0.9’ lists the number of atoms with occupancy less than 0.9.

Mol	Type	Chain	Res	Atoms	RSCC	RSR	B-factors(Å ²)	Q<0.9
1	HIC	A	73	11/12	0.96	0.09	23,30,34,35	0
1	HIC	D	73	11/12	0.96	0.09	26,34,38,39	0

6.3 Carbohydrates [i](#)

There are no carbohydrates in this entry.

6.4 Ligands [i](#)

In the following table, the Atoms column lists the number of modelled atoms in the group and the number defined in the chemical component dictionary. The B-factors column lists the minimum, median, 95th percentile and maximum values of B factors of atoms in the group. The column labelled 'Q< 0.9' lists the number of atoms with occupancy less than 0.9.

Mol	Type	Chain	Res	Atoms	RSCC	RSR	B-factors(\AA^2)	Q<0.9
6	GOL	A	1383	6/6	0.67	0.21	52,58,59,60	0
7	NAG	B	271	14/15	0.75	0.37	40,43,45,45	0
7	NAG	E	271	14/15	0.85	0.31	42,44,46,47	0
7	NAG	B	270	14/15	0.89	0.29	34,35,42,43	0
7	NAG	E	270	14/15	0.92	0.27	33,37,43,44	0
6	GOL	B	1384	6/6	0.93	0.25	29,32,35,37	0
5	ATP	D	1380	31/31	0.98	0.06	21,24,26,27	0
5	ATP	A	1379	31/31	0.98	0.05	18,21,25,25	0
4	CA	B	1273	1/1	0.99	0.07	24,24,24,24	0
4	CA	A	1381	1/1	0.99	0.06	20,20,20,20	0
8	MG	B	1274	1/1	0.99	0.12	32,32,32,32	0
8	MG	E	1275	1/1	0.99	0.07	27,27,27,27	0
4	CA	E	1272	1/1	1.00	0.05	23,23,23,23	0
4	CA	D	1382	1/1	1.00	0.06	23,23,23,23	0

6.5 Other polymers [i](#)

There are no such residues in this entry.