



Full wwPDB X-ray Structure Validation Report ⓘ

Feb 17, 2018 – 01:27 am GMT

PDB ID : 2A4F
Title : Synthesis and Activity of N-Axyl Azacyclic Urea HIV-1 Protease Inhibitors with High Potency Against Multiple Drug Resistant Viral Strains.
Authors : Zhao, C.; Sham, H.; Sun, M.; Lin, S.; Stoll, V.; Stewart, K.D.; Mo, H.; Vasavanonda, S.; Saldivar, A.; McDonald, E.
Deposited on : 2005-06-28
Resolution : 1.90 Å(reported)

This is a Full wwPDB X-ray Structure Validation Report for a publicly released PDB entry.

We welcome your comments at validation@mail.wwpdb.org

A user guide is available at

<https://www.wwpdb.org/validation/2017/XrayValidationReportHelp>

with specific help available everywhere you see the ⓘ symbol.

The following versions of software and data (see [references ⓘ](#)) were used in the production of this report:

MolProbity	:	4.02b-467
Mogul	:	1.7.3 (157068), CSD as539be (2018)
Xtriage (Phenix)	:	NOT EXECUTED
EDS	:	NOT EXECUTED
Percentile statistics	:	20171227.v01 (using entries in the PDB archive December 27th 2017)
Ideal geometry (proteins)	:	Engh & Huber (2001)
Ideal geometry (DNA, RNA)	:	Parkinson et al. (1996)
Validation Pipeline (wwPDB-VP)	:	trunk30686

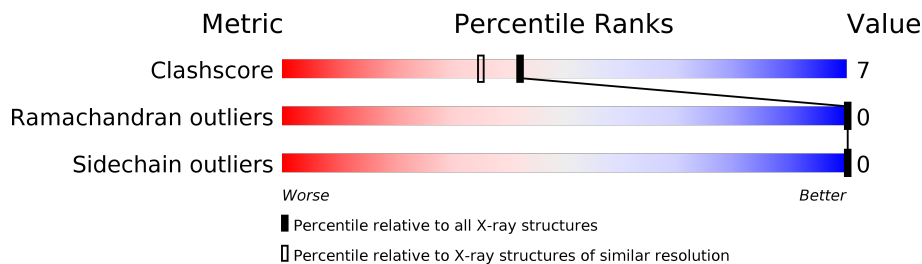
1 Overall quality at a glance

The following experimental techniques were used to determine the structure:

X-RAY DIFFRACTION

The reported resolution of this entry is 1.90 Å.

Percentile scores (ranging between 0-100) for global validation metrics of the entry are shown in the following graphic. The table shows the number of entries on which the scores are based.



Metric	Whole archive (#Entries)	Similar resolution (#Entries, resolution range(Å))
Clashscore	122078	6112 (1.90-1.90)
Ramachandran outliers	120005	6045 (1.90-1.90)
Sidechain outliers	119972	6045 (1.90-1.90)

The table below summarises the geometric issues observed across the polymeric chains and their fit to the electron density. The red, orange, yellow and green segments on the lower bar indicate the fraction of residues that contain outliers for ≥ 3 , 2, 1 and 0 types of geometric quality criteria. A grey segment represents the fraction of residues that are not modelled. The numeric value for each fraction is indicated below the corresponding segment, with a dot representing fractions $\leq 5\%$. The upper red bar (where present) indicates the fraction of residues that have poor fit to the electron density. The numeric value is given above the bar.

Note EDS was not executed.

Mol	Chain	Length	Quality of chain
1	A	99	
1	B	99	

2 Entry composition [i](#)

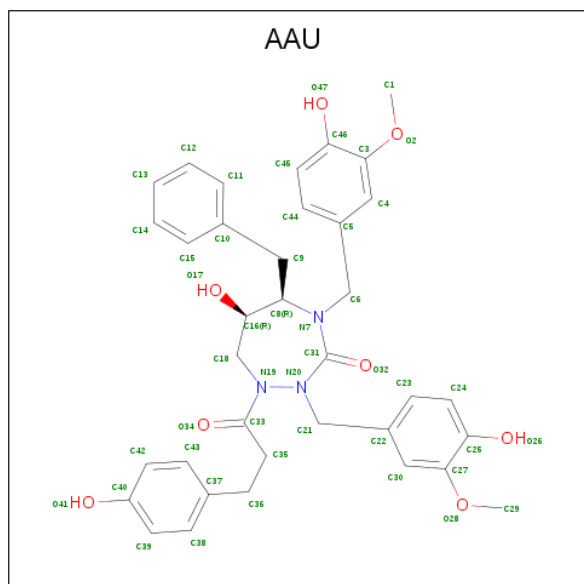
There are 3 unique types of molecules in this entry. The entry contains 1645 atoms, of which 0 are hydrogens and 0 are deuteriums.

In the tables below, the ZeroOcc column contains the number of atoms modelled with zero occupancy, the AltConf column contains the number of residues with at least one atom in alternate conformation and the Trace column contains the number of residues modelled with at most 2 atoms.

- Molecule 1 is a protein called Pol polyprotein.

Mol	Chain	Residues	Atoms					ZeroOcc	AltConf	Trace
1	A	99	Total	C	N	O	S	0	0	0
			757	489	130	134	4			
1	B	99	Total	C	N	O	S	0	0	0
			757	489	130	134	4			

- Molecule 2 is (5R,6R)-5-BENZYL-6-HYDROXY-2,4-BIS(4-HYDROXY-3-METHOXYBENZYL)-1-[3-(4-HYDROXYPHENYL)PROPANOYL]-1,2,4-TRIAZEPAN-3-ONE (three-letter code: AAU) (formula: C₃₆H₃₉N₃O₈).



Mol	Chain	Residues	Atoms				ZeroOcc	AltConf
2	B	1	Total	C	N	O	0	0
			47	36	3	8		

- Molecule 3 is water.

Mol	Chain	Residues	Atoms		ZeroOcc	AltConf
3	A	34	Total 34	O 34	0	0
3	B	50	Total 50	O 50	0	0

3 Residue-property plots [i](#)

These plots are drawn for all protein, RNA and DNA chains in the entry. The first graphic for a chain summarises the proportions of the various outlier classes displayed in the second graphic. The second graphic shows the sequence view annotated by issues in geometry and electron density. Residues are color-coded according to the number of geometric quality criteria for which they contain at least one outlier: green = 0, yellow = 1, orange = 2 and red = 3 or more. A red dot above a residue indicates a poor fit to the electron density ($RSRZ > 2$). Stretches of 2 or more consecutive residues without any outlier are shown as a green connector. Residues present in the sample, but not in the model, are shown in grey.


Note EDS was not executed.

- Molecule 1: Pol polyprotein

Chain A:  86% 14%



- Molecule 1: Pol polyprotein

Chain B:  88% 12%



4 Data and refinement statistics

Xtriage (Phenix) and EDS were not executed - this section is therefore incomplete.

Property	Value	Source
Space group	P 21 21 2	Depositor
Cell constants a, b, c, α , β , γ	58.01Å 85.74Å 46.65Å 90.00° 90.00° 90.00°	Depositor
Resolution (Å)	42.87 – 1.90	Depositor
% Data completeness (in resolution range)	96.5 (42.87-1.90)	Depositor
R_{merge}	(Not available)	Depositor
R_{sym}	(Not available)	Depositor
Refinement program	CNX 2000	Depositor
R, R_{free}	0.298 , 0.336	Depositor
Estimated twinning fraction	No twinning to report.	Xtriage
Total number of atoms	1645	wwPDB-VP
Average B, all atoms (Å ²)	20.0	wwPDB-VP

5 Model quality

5.1 Standard geometry

Bond lengths and bond angles in the following residue types are not validated in this section: AAU

The Z score for a bond length (or angle) is the number of standard deviations the observed value is removed from the expected value. A bond length (or angle) with $|Z| > 5$ is considered an outlier worth inspection. RMSZ is the root-mean-square of all Z scores of the bond lengths (or angles).

Mol	Chain	Bond lengths		Bond angles	
		RMSZ	$\# Z > 5$	RMSZ	$\# Z > 5$
1	A	0.33	0/770	0.64	0/1043
1	B	0.34	0/770	0.65	0/1043
All	All	0.33	0/1540	0.65	0/2086

There are no bond length outliers.

There are no bond angle outliers.

There are no chirality outliers.

There are no planarity outliers.

5.2 Too-close contacts

In the following table, the Non-H and H(model) columns list the number of non-hydrogen atoms and hydrogen atoms in the chain respectively. The H(added) column lists the number of hydrogen atoms added and optimized by MolProbity. The Clashes column lists the number of clashes within the asymmetric unit, whereas Symm-Clashes lists symmetry related clashes.

Mol	Chain	Non-H	H(model)	H(added)	Clashes	Symm-Clashes
1	A	757	0	806	20	0
1	B	757	0	806	15	0
2	B	47	0	39	2	0
3	A	34	0	0	0	0
3	B	50	0	0	0	0
All	All	1645	0	1651	24	0

The all-atom clashscore is defined as the number of clashes found per 1000 atoms (including hydrogen atoms). The all-atom clashscore for this structure is 7.

All (24) close contacts within the same asymmetric unit are listed below, sorted by their clash magnitude.

Atom-1	Atom-2	Interatomic distance (Å)	Clash overlap (Å)
1:A:98:ASN:HD21	1:B:2:GLN:HE21	1.31	0.75
1:B:47:ILE:HD11	1:B:54:ILE:HD11	1.70	0.72
1:A:34:GLU:HG3	1:A:83:ASN:OD1	1.95	0.65
1:A:42:TRP:CE3	1:A:57:ARG:HG2	2.32	0.64
1:A:64:ILE:HD11	1:A:75:VAL:HG21	1.80	0.63
1:A:95:CYS:HA	1:B:99:PHE:HB3	1.80	0.62
1:A:97:LEU:CD1	1:B:5:LEU:HD21	2.35	0.57
1:A:98:ASN:HD21	1:B:2:GLN:NE2	2.04	0.53
1:A:26:THR:HG21	1:A:97:LEU:HD11	1.92	0.50
1:A:98:ASN:HD21	1:B:2:GLN:HG3	1.77	0.50
1:A:64:ILE:HD11	1:A:75:VAL:CG2	2.44	0.47
1:A:97:LEU:HD11	1:B:5:LEU:HD21	1.96	0.47
1:B:42:TRP:CE2	1:B:57:ARG:HD2	2.49	0.46
1:B:82:VAL:HG22	2:B:1000:AAU:H362	1.98	0.46
1:A:50:ILE:HD13	1:B:81:PRO:HD3	1.98	0.45
1:A:97:LEU:HD13	1:B:5:LEU:HD21	1.97	0.45
1:A:2:GLN:HG3	1:B:98:ASN:OD1	2.17	0.44
1:A:98:ASN:ND2	1:B:2:GLN:HE21	2.08	0.44
1:A:97:LEU:HD12	1:A:97:LEU:N	2.32	0.44
1:B:87:ARG:O	1:B:91:THR:HG23	2.19	0.42
1:A:41:ARG:HG2	1:A:41:ARG:HH11	1.86	0.41
1:A:42:TRP:CZ3	1:A:57:ARG:HG2	2.56	0.40
1:A:49:GLY:HA3	2:B:1000:AAU:H212	2.03	0.40
1:A:98:ASN:ND2	1:B:2:GLN:HG3	2.35	0.40

There are no symmetry-related clashes.

5.3 Torsion angles ⓘ

5.3.1 Protein backbone ⓘ

In the following table, the Percentiles column shows the percent Ramachandran outliers of the chain as a percentile score with respect to all X-ray entries followed by that with respect to entries of similar resolution.

The Analysed column shows the number of residues for which the backbone conformation was analysed, and the total number of residues.

Mol	Chain	Analysed	Favoured	Allowed	Outliers	Percentiles	
1	A	97/99 (98%)	97 (100%)	0	0	100	100
1	B	97/99 (98%)	95 (98%)	2 (2%)	0	100	100

Continued on next page...

Continued from previous page...

Mol	Chain	Analysed	Favoured	Allowed	Outliers	Percentiles	
All	All	194/198 (98%)	192 (99%)	2 (1%)	0	100	100

There are no Ramachandran outliers to report.

5.3.2 Protein sidechains [i](#)

In the following table, the Percentiles column shows the percent sidechain outliers of the chain as a percentile score with respect to all X-ray entries followed by that with respect to entries of similar resolution.

The Analysed column shows the number of residues for which the sidechain conformation was analysed, and the total number of residues.

Mol	Chain	Analysed	Rotameric	Outliers	Percentiles	
1	A	83/83 (100%)	83 (100%)	0	100	100
1	B	83/83 (100%)	83 (100%)	0	100	100
All	All	166/166 (100%)	166 (100%)	0	100	100

There are no protein residues with a non-rotameric sidechain to report.

Some sidechains can be flipped to improve hydrogen bonding and reduce clashes. All (2) such sidechains are listed below:

Mol	Chain	Res	Type
1	A	61	GLN
1	B	2	GLN

5.3.3 RNA [i](#)

There are no RNA molecules in this entry.

5.4 Non-standard residues in protein, DNA, RNA chains [i](#)

There are no non-standard protein/DNA/RNA residues in this entry.

5.5 Carbohydrates [i](#)

There are no carbohydrates in this entry.

5.6 Ligand geometry

1 ligand is modelled in this entry.

In the following table, the Counts columns list the number of bonds (or angles) for which Mogul statistics could be retrieved, the number of bonds (or angles) that are observed in the model and the number of bonds (or angles) that are defined in the Chemical Component Dictionary. The Link column lists molecule types, if any, to which the group is linked. The Z score for a bond length (or angle) is the number of standard deviations the observed value is removed from the expected value. A bond length (or angle) with $|Z| > 2$ is considered an outlier worth inspection. RMSZ is the root-mean-square of all Z scores of the bond lengths (or angles).

Mol	Type	Chain	Res	Link	Bond lengths			Bond angles		
					Counts	RMSZ	# Z > 2	Counts	RMSZ	# Z > 2
2	AAU	B	1000	-	48,51,51	1.76	12 (25%)	56,71,71	1.37	6 (10%)

In the following table, the Chirals column lists the number of chiral outliers, the number of chiral centers analysed, the number of these observed in the model and the number defined in the Chemical Component Dictionary. Similar counts are reported in the Torsion and Rings columns. '-' means no outliers of that kind were identified.

Mol	Type	Chain	Res	Link	Chirals	Torsions	Rings
2	AAU	B	1000	-	-	0/21/49/49	0/4/5/5

All (12) bond length outliers are listed below:

Mol	Chain	Res	Type	Atoms	Z	Observed(Å)	Ideal(Å)
2	B	1000	AAU	C9-C8	2.01	1.56	1.53
2	B	1000	AAU	C8-N7	2.06	1.51	1.48
2	B	1000	AAU	C38-C37	2.25	1.43	1.38
2	B	1000	AAU	C6-N7	2.28	1.50	1.46
2	B	1000	AAU	C45-C44	2.34	1.42	1.38
2	B	1000	AAU	O28-C27	2.36	1.40	1.37
2	B	1000	AAU	C30-C27	2.71	1.43	1.38
2	B	1000	AAU	C43-C42	2.79	1.43	1.38
2	B	1000	AAU	C35-C33	3.00	1.58	1.51
2	B	1000	AAU	C4-C3	3.28	1.44	1.38
2	B	1000	AAU	O2-C3	3.35	1.42	1.37
2	B	1000	AAU	C16-C8	3.76	1.58	1.53

All (6) bond angle outliers are listed below:

Mol	Chain	Res	Type	Atoms	Z	Observed(°)	Ideal(°)
2	B	1000	AAU	C36-C35-C33	-3.24	108.38	112.33
2	B	1000	AAU	C30-C27-C25	-2.02	118.08	120.04

Continued on next page...

Continued from previous page...

Mol	Chain	Res	Type	Atoms	Z	Observed(°)	Ideal(°)
2	B	1000	AAU	O2-C3-C46	2.41	117.86	114.59
2	B	1000	AAU	C22-C21-N20	3.05	118.39	113.30
2	B	1000	AAU	C35-C36-C37	4.04	127.37	112.81
2	B	1000	AAU	C5-C6-N7	4.82	122.07	113.48

There are no chirality outliers.

There are no torsion outliers.

There are no ring outliers.

1 monomer is involved in 2 short contacts:

Mol	Chain	Res	Type	Clashes	Symm-Clashes
2	B	1000	AAU	2	0

5.7 Other polymers [i](#)

There are no such residues in this entry.

5.8 Polymer linkage issues [i](#)

There are no chain breaks in this entry.

6 Fit of model and data

6.1 Protein, DNA and RNA chains

EDS was not executed - this section is therefore empty.

6.2 Non-standard residues in protein, DNA, RNA chains

EDS was not executed - this section is therefore empty.

6.3 Carbohydrates

EDS was not executed - this section is therefore empty.

6.4 Ligands

EDS was not executed - this section is therefore empty.

6.5 Other polymers

EDS was not executed - this section is therefore empty.