



# Full wwPDB X-ray Structure Validation Report ⓘ

Mar 9, 2018 – 12:55 am GMT

PDB ID : 3A4T  
Title : Crystal structure of aTrm4 from *M.jannaschii* with sinefungin  
Authors : Hirano, M.; Kuratani, M.; Yokoyama, S.; RIKEN Structural Genomics/Proteomics Initiative (RSGI)  
Deposited on : 2009-07-14  
Resolution : 2.30 Å(reported)

This is a Full wwPDB X-ray Structure Validation Report for a publicly released PDB entry.

We welcome your comments at [validation@mail.wwpdb.org](mailto:validation@mail.wwpdb.org)

A user guide is available at

<https://www.wwpdb.org/validation/2017/XrayValidationReportHelp>

with specific help available everywhere you see the ⓘ symbol.

---

The following versions of software and data (see [references ⓘ](#)) were used in the production of this report:

MolProbity : 4.02b-467  
Mogul : 1.7.3 (157068), CSD as539be (2018)  
Xtriage (Phenix) : 1.13  
EDS : trunk30967  
Percentile statistics : 20171227.v01 (using entries in the PDB archive December 27th 2017)  
Refmac : 5.8.0158  
CCP4 : 7.0 (Gargrove)  
Ideal geometry (proteins) : Engh & Huber (2001)  
Ideal geometry (DNA, RNA) : Parkinson et al. (1996)  
Validation Pipeline (wwPDB-VP) : trunk30967

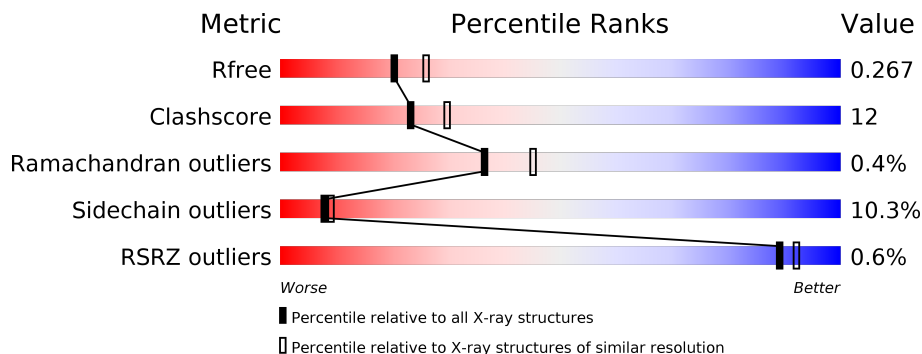
# 1 Overall quality at a glance

The following experimental techniques were used to determine the structure:

## *X-RAY DIFFRACTION*

The reported resolution of this entry is 2.30 Å.

Percentile scores (ranging between 0-100) for global validation metrics of the entry are shown in the following graphic. The table shows the number of entries on which the scores are based.



Metric	Whole archive (#Entries)	Similar resolution (#Entries, resolution range(Å))
$R_{free}$	111664	4477 (2.30-2.30)
Clashscore	122126	5072 (2.30-2.30)
Ramachandran outliers	120053	5022 (2.30-2.30)
Sidechain outliers	120020	5021 (2.30-2.30)
RSRZ outliers	108989	4374 (2.30-2.30)

The table below summarises the geometric issues observed across the polymeric chains and their fit to the electron density. The red, orange, yellow and green segments on the lower bar indicate the fraction of residues that contain outliers for  $\geq 3$ , 2, 1 and 0 types of geometric quality criteria. A grey segment represents the fraction of residues that are not modelled. The numeric value for each fraction is indicated below the corresponding segment, with a dot representing fractions  $\leq 5\%$ . The upper red bar (where present) indicates the fraction of residues that have poor fit to the electron density. The numeric value is given above the bar.

Mol	Chain	Length	Quality of chain
1	A	274	
1	B	274	

## 2 Entry composition [i](#)

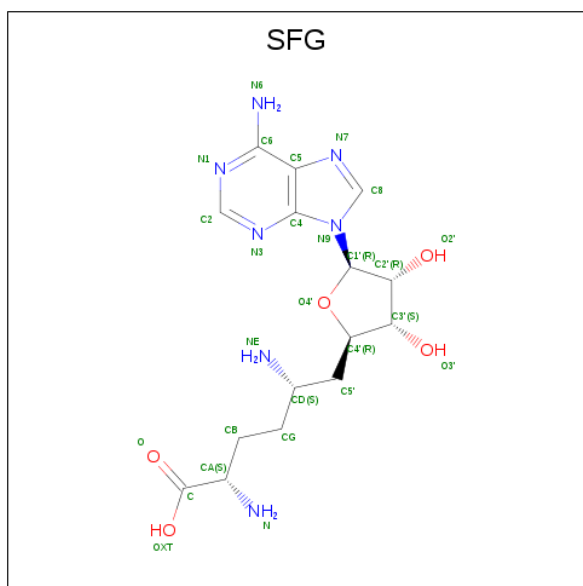
There are 3 unique types of molecules in this entry. The entry contains 4332 atoms, of which 0 are hydrogens and 0 are deuteriums.

In the tables below, the ZeroOcc column contains the number of atoms modelled with zero occupancy, the AltConf column contains the number of residues with at least one atom in alternate conformation and the Trace column contains the number of residues modelled with at most 2 atoms.

- Molecule 1 is a protein called Putative methyltransferase MJ0026.

Mol	Chain	Residues	Atoms					ZeroOcc	AltConf	Trace
1	A	258	Total	C	N	O	S	0	0	0
			2076	1341	341	382	12			
1	B	253	Total	C	N	O	S	0	0	0
			2035	1316	335	372	12			

- Molecule 2 is SINEFUNGIN (three-letter code: SFG) (formula:  $C_{15}H_{23}N_7O_5$ ).



Mol	Chain	Residues	Atoms				ZeroOcc	AltConf
2	A	1	Total	C	N	O	0	0
			27	15	7	5		
2	B	1	Total	C	N	O	0	0
			27	15	7	5		

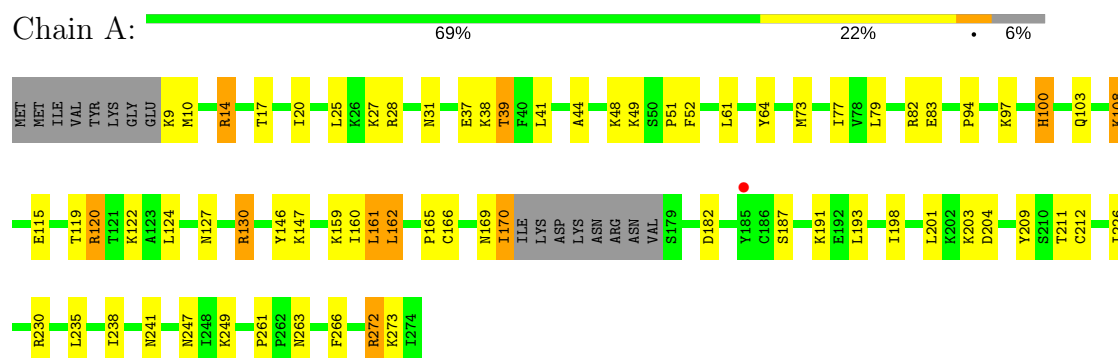
- Molecule 3 is water.

Mol	Chain	Residues	Atoms		ZeroOcc	AltConf
3	A	70	Total 70	O 70	0	0
3	B	97	Total 97	O 97	0	0

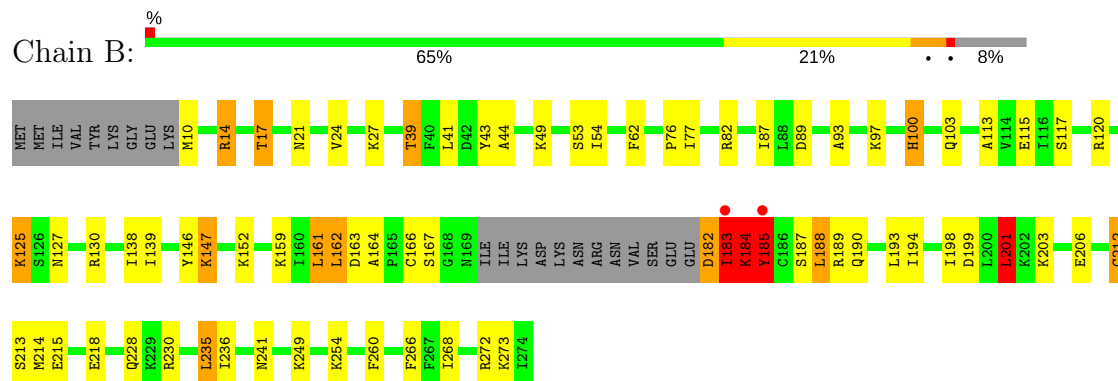
### 3 Residue-property plots

These plots are drawn for all protein, RNA and DNA chains in the entry. The first graphic for a chain summarises the proportions of the various outlier classes displayed in the second graphic. The second graphic shows the sequence view annotated by issues in geometry and electron density. Residues are color-coded according to the number of geometric quality criteria for which they contain at least one outlier: green = 0, yellow = 1, orange = 2 and red = 3 or more. A red dot above a residue indicates a poor fit to the electron density ( $RSRZ > 2$ ). Stretches of 2 or more consecutive residues without any outlier are shown as a green connector. Residues present in the sample, but not in the model, are shown in grey.

#### • Molecule 1: Putative methyltransferase MJ0026



#### • Molecule 1: Putative methyltransferase MJ0026



## 4 Data and refinement statistics

Property	Value	Source
Space group	C 1 2 1	Depositor
Cell constants a, b, c, $\alpha$ , $\beta$ , $\gamma$	170.26Å 40.10Å 85.95Å 90.00° 110.84° 90.00°	Depositor
Resolution (Å)	42.45 – 2.30 42.44 – 2.30	Depositor EDS
% Data completeness (in resolution range)	99.8 (42.45-2.30) 99.8 (42.44-2.30)	Depositor EDS
$R_{merge}$	0.02	Depositor
$R_{sym}$	0.02	Depositor
$\langle I/\sigma(I) \rangle$ <sup>1</sup>	1.96 (at 2.29Å)	Xtriage
Refinement program	REFMAC 5.2.0019	Depositor
R, $R_{free}$	0.181 , 0.268 0.181 , 0.267	Depositor DCC
$R_{free}$ test set	1248 reflections (5.08%)	wwPDB-VP
Wilson B-factor (Å <sup>2</sup> )	23.7	Xtriage
Anisotropy	0.152	Xtriage
Bulk solvent $k_{sol}$ (e/Å <sup>3</sup> ), $B_{sol}$ (Å <sup>2</sup> )	0.38 , 51.0	EDS
L-test for twinning <sup>2</sup>	$\langle  L  \rangle = 0.51$ , $\langle L^2 \rangle = 0.35$	Xtriage
Estimated twinning fraction	No twinning to report.	Xtriage
$F_o, F_c$ correlation	0.94	EDS
Total number of atoms	4332	wwPDB-VP
Average B, all atoms (Å <sup>2</sup> )	22.0	wwPDB-VP

Xtriage's analysis on translational NCS is as follows: *The largest off-origin peak in the Patterson function is 6.22% of the height of the origin peak. No significant pseudotranslation is detected.*

<sup>1</sup>Intensities estimated from amplitudes.

<sup>2</sup>Theoretical values of  $\langle |L| \rangle$ ,  $\langle L^2 \rangle$  for acentric reflections are 0.5, 0.333 respectively for untwinned datasets, and 0.375, 0.2 for perfectly twinned datasets.

## 5 Model quality

### 5.1 Standard geometry

Bond lengths and bond angles in the following residue types are not validated in this section: SFG

The Z score for a bond length (or angle) is the number of standard deviations the observed value is removed from the expected value. A bond length (or angle) with  $|Z| > 5$  is considered an outlier worth inspection. RMSZ is the root-mean-square of all Z scores of the bond lengths (or angles).

Mol	Chain	Bond lengths		Bond angles	
		RMSZ	$\# Z  > 5$	RMSZ	$\# Z  > 5$
1	A	1.16	1/2109 (0.0%)	1.04	6/2832 (0.2%)
1	B	1.24	5/2068 (0.2%)	1.09	9/2778 (0.3%)
All	All	1.20	6/4177 (0.1%)	1.07	15/5610 (0.3%)

Chiral center outliers are detected by calculating the chiral volume of a chiral center and verifying if the center is modelled as a planar moiety or with the opposite hand. A planarity outlier is detected by checking planarity of atoms in a peptide group, atoms in a mainchain group or atoms of a sidechain that are expected to be planar.

Mol	Chain	#Chirality outliers	#Planarity outliers
1	B	0	4

All (6) bond length outliers are listed below:

Mol	Chain	Res	Type	Atoms	Z	Observed(Å)	Ideal(Å)
1	B	215	GLU	CD-OE2	12.95	1.39	1.25
1	B	249	LYS	CD-CE	8.55	1.72	1.51
1	B	249	LYS	CE-NZ	6.43	1.65	1.49
1	B	184	LYS	N-CA	6.13	1.58	1.46
1	A	146	TYR	CD1-CE1	5.64	1.47	1.39
1	B	212	CYS	CB-SG	5.61	1.91	1.82

All (15) bond angle outliers are listed below:

Mol	Chain	Res	Type	Atoms	Z	Observed(°)	Ideal(°)
1	B	183	ILE	CB-CA-C	8.46	128.52	111.60
1	B	14	ARG	NE-CZ-NH1	8.23	124.42	120.30
1	B	235	LEU	CA-CB-CG	7.89	133.45	115.30
1	A	120	ARG	NE-CZ-NH1	6.81	123.70	120.30
1	B	201	LEU	CA-CB-CG	6.71	130.74	115.30

*Continued on next page...*

*Continued from previous page...*

Mol	Chain	Res	Type	Atoms	Z	Observed(°)	Ideal(°)
1	A	120	ARG	NE-CZ-NH2	-6.41	117.10	120.30
1	B	185	TYR	N-CA-C	5.96	127.08	111.00
1	A	130	ARG	NE-CZ-NH1	5.92	123.26	120.30
1	B	147	LYS	CD-CE-NZ	-5.89	98.15	111.70
1	A	182	ASP	CB-CG-OD2	-5.81	113.07	118.30
1	A	161	LEU	CA-CB-CG	5.71	128.44	115.30
1	A	130	ARG	NE-CZ-NH2	-5.43	117.58	120.30
1	B	14	ARG	NE-CZ-NH2	-5.26	117.67	120.30
1	B	161	LEU	CA-CB-CG	5.24	127.35	115.30
1	B	162	LEU	CB-CG-CD2	5.20	119.83	111.00

There are no chirality outliers.

All (4) planarity outliers are listed below:

Mol	Chain	Res	Type	Group
1	B	182	ASP	Peptide
1	B	183	ILE	Peptide
1	B	184	LYS	Peptide
1	B	185	TYR	Peptide

## 5.2 Too-close contacts

In the following table, the Non-H and H(model) columns list the number of non-hydrogen atoms and hydrogen atoms in the chain respectively. The H(added) column lists the number of hydrogen atoms added and optimized by MolProbity. The Clashes column lists the number of clashes within the asymmetric unit, whereas Symm-Clashes lists symmetry related clashes.

Mol	Chain	Non-H	H(model)	H(added)	Clashes	Symm-Clashes
1	A	2076	0	2173	41	0
1	B	2035	0	2132	62	0
2	A	27	0	22	4	0
2	B	27	0	22	6	0
3	A	70	0	0	3	2
3	B	97	0	0	4	1
All	All	4332	0	4349	104	2

The all-atom clashscore is defined as the number of clashes found per 1000 atoms (including hydrogen atoms). The all-atom clashscore for this structure is 12.

All (104) close contacts within the same asymmetric unit are listed below, sorted by their clash magnitude.



Atom-1	Atom-2	Interatomic distance (Å)	Clash overlap (Å)
1:B:184:LYS:HD2	1:B:184:LYS:N	1.51	1.17
1:B:182:ASP:HB3	1:B:183:ILE:HB	1.22	1.13
1:B:185:TYR:HB3	1:B:188:LEU:HB2	1.14	1.11
1:B:184:LYS:CD	1:B:184:LYS:H	1.66	1.09
1:B:185:TYR:CD1	1:B:188:LEU:HD13	1.88	1.06
1:A:39:THR:HG22	1:A:41:LEU:H	1.20	1.05
1:B:182:ASP:HB3	1:B:183:ILE:CB	1.91	0.98
1:B:184:LYS:H	1:B:184:LYS:HD2	1.03	0.97
1:A:272:ARG:HH11	1:A:272:ARG:HG3	1.37	0.90
1:A:39:THR:CG2	1:A:41:LEU:H	1.88	0.86
1:B:185:TYR:CB	1:B:188:LEU:HB2	2.05	0.84
1:B:189:ARG:HB3	1:B:189:ARG:HH21	1.43	0.82
1:B:39:THR:HG21	1:B:44:ALA:HB3	1.65	0.77
1:A:39:THR:HG22	1:A:41:LEU:N	1.98	0.76
1:B:189:ARG:HB3	1:B:189:ARG:NH2	2.03	0.72
1:B:189:ARG:HH12	2:B:501:SFG:HN61	1.37	0.72
1:B:21:ASN:HD22	1:B:24:VAL:H	1.36	0.72
1:B:185:TYR:CD1	1:B:188:LEU:CD1	2.72	0.71
1:A:79:LEU:HD11	1:A:159:LYS:HB3	1.73	0.70
1:A:272:ARG:CG	1:A:272:ARG:HH11	2.05	0.69
1:B:127:ASN:ND2	1:B:130:ARG:HH21	1.91	0.69
1:B:76:PRO:HG2	1:B:100:HIS:CD2	2.28	0.68
1:A:9:LYS:HE3	1:A:10:MET:O	1.94	0.67
1:A:97:LYS:HG3	2:A:500:SFG:O	1.94	0.67
1:A:39:THR:HG21	1:A:44:ALA:HB3	1.76	0.67
1:A:247:ASN:H	1:A:263:ASN:ND2	1.93	0.66
1:B:185:TYR:CG	1:B:188:LEU:HD13	2.30	0.66
1:B:199:ASP:OD2	3:B:371:HOH:O	2.13	0.65
1:A:169:ASN:O	1:A:170:ILE:HB	1.96	0.64
1:A:198:ILE:CD1	1:A:226:ILE:HG12	2.27	0.64
1:B:182:ASP:HB3	1:B:183:ILE:CA	2.29	0.63
1:B:236:ILE:HD11	1:B:272:ARG:HB2	1.81	0.63
1:B:87:ILE:CD1	1:B:159:LYS:HB2	2.29	0.62
1:B:184:LYS:CD	1:B:184:LYS:N	2.32	0.62
1:A:100:HIS:HD2	3:A:280:HOH:O	1.83	0.61
1:A:83:GLU:O	1:A:108:LYS:HB2	2.01	0.60
1:B:189:ARG:HD2	3:B:363:HOH:O	2.01	0.60
1:B:87:ILE:HD13	1:B:159:LYS:HB2	1.83	0.60
1:A:127:ASN:ND2	1:A:130:ARG:HH21	2.00	0.60
1:B:182:ASP:HB2	1:B:184:LYS:HD3	1.84	0.60
1:B:184:LYS:H	1:B:184:LYS:HD3	1.65	0.59
1:A:119:THR:O	1:A:122:LYS:HB2	2.03	0.59

Continued on next page...

*Continued from previous page...*

Atom-1	Atom-2	Interatomic distance (Å)	Clash overlap (Å)
1:B:198:ILE:HG21	1:B:230:ARG:HD3	1.85	0.59
1:A:39:THR:HB	1:A:44:ALA:O	2.04	0.58
1:B:17:THR:HG22	3:B:338:HOH:O	2.02	0.58
1:A:27:LYS:HE2	1:A:31:ASN:HD21	1.67	0.57
1:B:43:TYR:OH	1:B:77:ILE:HD11	2.05	0.56
1:A:203:LYS:O	1:A:204:ASP:HB2	2.06	0.55
1:A:127:ASN:HD22	1:A:130:ARG:HH21	1.54	0.55
1:A:120:ARG:HH11	2:A:500:SFG:H3'	1.72	0.54
1:A:160:ILE:HD12	1:A:201:LEU:HD13	1.89	0.54
1:A:100:HIS:CD2	3:A:280:HOH:O	2.59	0.53
1:A:187:SER:O	1:A:191:LYS:HG3	2.09	0.53
1:A:165:PRO:HG3	2:A:500:SFG:H8	1.91	0.52
1:A:198:ILE:O	1:A:273:LYS:HE3	2.10	0.52
1:B:162:LEU:HD22	1:B:164:ALA:HB2	1.92	0.52
1:A:20:ILE:HD13	1:A:25:LEU:HB2	1.91	0.52
1:B:97:LYS:HG3	2:B:501:SFG:O	2.09	0.51
1:B:39:THR:CG2	1:B:41:LEU:H	2.23	0.51
1:B:254:LYS:NZ	1:B:254:LYS:HB3	2.27	0.50
1:B:166:CYS:HB2	1:B:213:SER:HB2	1.92	0.50
1:B:167:SER:HB2	1:B:183:ILE:HG23	1.93	0.50
1:B:14:ARG:NH1	1:B:103:GLN:OE1	2.32	0.50
1:B:254:LYS:CB	1:B:254:LYS:NZ	2.74	0.50
1:A:27:LYS:CE	1:A:31:ASN:HD21	2.25	0.49
1:B:185:TYR:HB3	1:B:188:LEU:H	1.75	0.49
1:B:167:SER:OG	1:B:218:GLU:OE1	2.26	0.49
1:A:166:CYS:HB3	1:A:211:THR:OG1	2.13	0.49
1:B:17:THR:CG2	3:B:338:HOH:O	2.61	0.49
1:B:39:THR:HG23	1:B:41:LEU:H	1.78	0.49
1:A:14:ARG:NH1	1:A:103:GLN:OE1	2.40	0.48
1:B:162:LEU:HD12	1:B:194:ILE:HA	1.95	0.48
1:B:201:LEU:HD11	1:B:206:GLU:O	2.12	0.48
1:B:93:ALA:O	2:B:501:SFG:HG2	2.12	0.48
1:A:48:LYS:NZ	3:A:298:HOH:O	2.46	0.48
1:A:198:ILE:HD12	1:A:226:ILE:HG12	1.98	0.46
1:B:187:SER:HA	1:B:190:GLN:OE1	2.16	0.46
1:B:183:ILE:HG22	1:B:184:LYS:HE3	1.97	0.46
1:B:115:GLU:OE2	2:B:501:SFG:O2'	2.26	0.46
1:A:247:ASN:ND2	1:A:261:PRO:O	2.49	0.46
1:B:127:ASN:HD22	1:B:130:ARG:HH21	1.59	0.45
1:B:254:LYS:HB3	1:B:254:LYS:HZ3	1.82	0.44
1:B:185:TYR:HA	1:B:187:SER:H	1.82	0.44

*Continued on next page...*

Continued from previous page...

Atom-1	Atom-2	Interatomic distance (Å)	Clash overlap (Å)
1:A:226:ILE:HD11	1:A:230:ARG:HD2	1.99	0.44
1:B:198:ILE:O	1:B:273:LYS:NZ	2.51	0.43
1:A:115:GLU:OE2	2:A:500:SFG:O2'	2.29	0.43
1:B:185:TYR:HD1	1:B:188:LEU:N	2.16	0.43
1:B:54:ILE:HD12	1:B:54:ILE:HA	1.95	0.43
1:B:139:ILE:HD13	1:B:146:TYR:OH	2.18	0.43
1:A:73:MET:O	1:A:77:ILE:HD12	2.20	0.42
1:A:162:LEU:HD13	1:A:209:TYR:HD1	1.85	0.42
1:B:77:ILE:CD1	1:B:100:HIS:CE1	3.02	0.42
1:B:89:ASP:HB3	1:B:113:ALA:HA	2.01	0.42
1:A:25:LEU:HD13	1:A:64:TYR:HB3	2.01	0.42
1:A:17:THR:HA	1:A:20:ILE:O	2.19	0.42
1:B:162:LEU:CD1	1:B:194:ILE:HA	2.49	0.42
1:B:185:TYR:HB2	1:B:188:LEU:HD22	2.03	0.41
1:A:51:PRO:HG2	1:A:52:PHE:CE2	2.55	0.41
1:B:214:MET:HE1	1:B:260:PHE:CD1	2.55	0.41
1:A:226:ILE:HD11	1:A:230:ARG:CD	2.50	0.41
1:B:163:ASP:OD2	2:B:501:SFG:HB2	2.21	0.41
1:B:117:SER:HB3	1:B:120:ARG:HB2	2.04	0.40
1:B:125:LYS:HG2	1:B:138:ILE:CD1	2.52	0.40
2:B:501:SFG:HG2	2:B:501:SFG:H4'	1.99	0.40

All (2) symmetry-related close contacts are listed below. The label for Atom-2 includes the symmetry operator and encoded unit-cell translations to be applied.

Atom-1	Atom-2	Interatomic distance (Å)	Clash overlap (Å)
3:A:342:HOH:O	3:A:342:HOH:O[2_554]	2.16	0.04
3:A:344:HOH:O	3:B:370:HOH:O[1_545]	2.17	0.03

## 5.3 Torsion angles ⓘ

### 5.3.1 Protein backbone ⓘ

In the following table, the Percentiles column shows the percent Ramachandran outliers of the chain as a percentile score with respect to all X-ray entries followed by that with respect to entries of similar resolution.

The Analysed column shows the number of residues for which the backbone conformation was analysed, and the total number of residues.

Mol	Chain	Analysed	Favoured	Allowed	Outliers	Percentiles	
1	A	254/274 (93%)	246 (97%)	7 (3%)	1 (0%)	36	45
1	B	249/274 (91%)	245 (98%)	3 (1%)	1 (0%)	36	45
All	All	503/548 (92%)	491 (98%)	10 (2%)	2 (0%)	36	45

All (2) Ramachandran outliers are listed below:

Mol	Chain	Res	Type
1	A	38	LYS
1	B	183	ILE

### 5.3.2 Protein sidechains ⓘ

In the following table, the Percentiles column shows the percent sidechain outliers of the chain as a percentile score with respect to all X-ray entries followed by that with respect to entries of similar resolution.

The Analysed column shows the number of residues for which the sidechain conformation was analysed, and the total number of residues.

Mol	Chain	Analysed	Rotameric	Outliers	Percentiles	
1	A	235/250 (94%)	212 (90%)	23 (10%)	9	10
1	B	230/250 (92%)	205 (89%)	25 (11%)	7	8
All	All	465/500 (93%)	417 (90%)	48 (10%)	8	9

All (48) residues with a non-rotameric sidechain are listed below:

Mol	Chain	Res	Type
1	A	14	ARG
1	A	28	ARG
1	A	37	GLU
1	A	39	THR
1	A	49	LYS
1	A	61	LEU
1	A	82	ARG
1	A	94	PRO
1	A	100	HIS
1	A	108	LYS
1	A	124	LEU
1	A	147	LYS
1	A	161	LEU
1	A	162	LEU

*Continued on next page...*

*Continued from previous page...*

Mol	Chain	Res	Type
1	A	170	ILE
1	A	193	LEU
1	A	212	CYS
1	A	235	LEU
1	A	238	ILE
1	A	241	ASN
1	A	249	LYS
1	A	266	PHE
1	A	272	ARG
1	B	10	MET
1	B	17	THR
1	B	27	LYS
1	B	39	THR
1	B	49	LYS
1	B	53	SER
1	B	62	PHE
1	B	82	ARG
1	B	100	HIS
1	B	125	LYS
1	B	147	LYS
1	B	152	LYS
1	B	161	LEU
1	B	183	ILE
1	B	184	LYS
1	B	188	LEU
1	B	193	LEU
1	B	201	LEU
1	B	203	LYS
1	B	212	CYS
1	B	228	GLN
1	B	235	LEU
1	B	241	ASN
1	B	266	PHE
1	B	268	ILE

Some sidechains can be flipped to improve hydrogen bonding and reduce clashes. All (12) such sidechains are listed below:

Mol	Chain	Res	Type
1	A	21	ASN
1	A	31	ASN
1	A	100	HIS
1	A	127	ASN

*Continued on next page...*

*Continued from previous page...*

Mol	Chain	Res	Type
1	A	228	GLN
1	A	263	ASN
1	B	21	ASN
1	B	100	HIS
1	B	127	ASN
1	B	129	ASN
1	B	241	ASN
1	B	263	ASN

### 5.3.3 RNA [i](#)

There are no RNA molecules in this entry.

### 5.4 Non-standard residues in protein, DNA, RNA chains [i](#)

There are no non-standard protein/DNA/RNA residues in this entry.

### 5.5 Carbohydrates [i](#)

There are no carbohydrates in this entry.

### 5.6 Ligand geometry [i](#)

2 ligands are modelled in this entry.

In the following table, the Counts columns list the number of bonds (or angles) for which Mogul statistics could be retrieved, the number of bonds (or angles) that are observed in the model and the number of bonds (or angles) that are defined in the Chemical Component Dictionary. The Link column lists molecule types, if any, to which the group is linked. The Z score for a bond length (or angle) is the number of standard deviations the observed value is removed from the expected value. A bond length (or angle) with  $|Z| > 2$  is considered an outlier worth inspection. RMSZ is the root-mean-square of all Z scores of the bond lengths (or angles).

Mol	Type	Chain	Res	Link	Bond lengths			Bond angles		
					Counts	RMSZ	# $ Z  > 2$	Counts	RMSZ	# $ Z  > 2$
2	SFG	A	500	-	21,29,29	1.30	2 (9%)	17,42,42	2.57	6 (35%)
2	SFG	B	501	-	21,29,29	1.02	0	17,42,42	2.40	3 (17%)

In the following table, the Chirals column lists the number of chiral outliers, the number of chiral centers analysed, the number of these observed in the model and the number defined in the

Chemical Component Dictionary. Similar counts are reported in the Torsion and Rings columns.  
'-' means no outliers of that kind were identified.

Mol	Type	Chain	Res	Link	Chirals	Torsions	Rings
2	SFG	A	500	-	-	0/9/33/33	0/3/3/3
2	SFG	B	501	-	-	0/9/33/33	0/3/3/3

All (2) bond length outliers are listed below:

Mol	Chain	Res	Type	Atoms	Z	Observed(Å)	Ideal(Å)
2	A	500	SFG	CG-CD	2.05	1.56	1.53
2	A	500	SFG	O4'-C1'	3.10	1.45	1.41

All (9) bond angle outliers are listed below:

Mol	Chain	Res	Type	Atoms	Z	Observed(°)	Ideal(°)
2	B	501	SFG	N3-C2-N1	-8.22	121.83	128.86
2	A	500	SFG	N3-C2-N1	-7.98	122.03	128.86
2	A	500	SFG	O3'-C3'-C4'	-4.01	99.45	111.06
2	B	501	SFG	O3'-C3'-C4'	-2.98	102.44	111.06
2	B	501	SFG	C4'-O4'-C1'	-2.53	107.19	109.83
2	A	500	SFG	C5'-CD-CG	2.08	117.27	110.89
2	A	500	SFG	C2'-C3'-C4'	2.29	107.01	102.62
2	A	500	SFG	C4'-C5'-CD	2.45	117.83	113.51
2	A	500	SFG	C2-N1-C6	2.76	123.45	118.75

There are no chirality outliers.

There are no torsion outliers.

There are no ring outliers.

2 monomers are involved in 10 short contacts:

Mol	Chain	Res	Type	Clashes	Symm-Clashes
2	A	500	SFG	4	0
2	B	501	SFG	6	0

## 5.7 Other polymers [i](#)

There are no such residues in this entry.

## 5.8 Polymer linkage issues [i](#)

There are no chain breaks in this entry.

## 6 Fit of model and data [i](#)

### 6.1 Protein, DNA and RNA chains [i](#)

In the following table, the column labelled ‘#RSRZ > 2’ contains the number (and percentage) of RSRZ outliers, followed by percent RSRZ outliers for the chain as percentile scores relative to all X-ray entries and entries of similar resolution. The OWAB column contains the minimum, median, 95<sup>th</sup> percentile and maximum values of the occupancy-weighted average B-factor per residue. The column labelled ‘Q < 0.9’ lists the number of (and percentage) of residues with an average occupancy less than 0.9.

Mol	Chain	Analysed	<RSRZ>	#RSRZ>2	OWAB(Å <sup>2</sup> )	Q<0.9
1	A	258/274 (94%)	-0.39	1 (0%) 92 95	13, 22, 35, 42	0
1	B	253/274 (92%)	-0.36	2 (0%) 86 89	12, 20, 33, 40	0
All	All	511/548 (93%)	-0.38	3 (0%) 89 92	12, 21, 34, 42	0

All (3) RSRZ outliers are listed below:

Mol	Chain	Res	Type	RSRZ
1	B	185	TYR	6.5
1	A	185	TYR	2.2
1	B	183	ILE	2.0

### 6.2 Non-standard residues in protein, DNA, RNA chains [i](#)

There are no non-standard protein/DNA/RNA residues in this entry.

### 6.3 Carbohydrates [i](#)

There are no carbohydrates in this entry.

### 6.4 Ligands [i](#)

In the following table, the Atoms column lists the number of modelled atoms in the group and the number defined in the chemical component dictionary. The B-factors column lists the minimum, median, 95<sup>th</sup> percentile and maximum values of B factors of atoms in the group. The column labelled ‘Q < 0.9’ lists the number of atoms with occupancy less than 0.9.

Mol	Type	Chain	Res	Atoms	RSCC	RSR	B-factors(Å <sup>2</sup> )	Q<0.9
2	SFG	A	500	27/27	0.84	0.18	29,39,46,47	0
2	SFG	B	501	27/27	0.89	0.19	29,39,45,46	0



## 6.5 Other polymers [i](#)

There are no such residues in this entry.