



Full wwPDB X-ray Structure Validation Report ⓘ

Mar 9, 2018 – 04:16 am GMT

PDB ID : 4A4X
Title : NEK2-EDE bound to CCT248662
Authors : Mas-Droux, C.; Bayliss, R.
Deposited on : 2011-10-20
Resolution : 2.40 Å(reported)

This is a Full wwPDB X-ray Structure Validation Report for a publicly released PDB entry.

We welcome your comments at validation@mail.wwpdb.org

A user guide is available at

<https://www.wwpdb.org/validation/2017/XrayValidationReportHelp>

with specific help available everywhere you see the ⓘ symbol.

The following versions of software and data (see [references ⓘ](#)) were used in the production of this report:

MolProbity : 4.02b-467
Mogul : 1.7.3 (157068), CSD as539be (2018)
Xtriage (Phenix) : 1.13
EDS : trunk30967
Percentile statistics : 20171227.v01 (using entries in the PDB archive December 27th 2017)
Refmac : 5.8.0158
CCP4 : 7.0 (Gargrove)
Ideal geometry (proteins) : Engh & Huber (2001)
Ideal geometry (DNA, RNA) : Parkinson et al. (1996)
Validation Pipeline (wwPDB-VP) : trunk30967

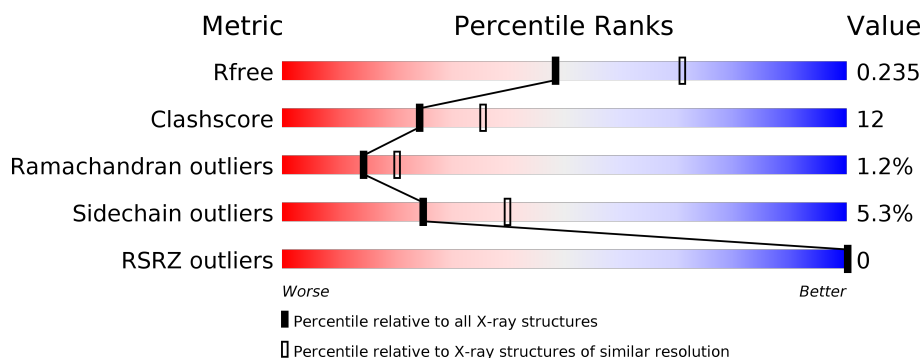
1 Overall quality at a glance

The following experimental techniques were used to determine the structure:

X-RAY DIFFRACTION

The reported resolution of this entry is 2.40 Å.

Percentile scores (ranging between 0-100) for global validation metrics of the entry are shown in the following graphic. The table shows the number of entries on which the scores are based.



Metric	Whole archive (#Entries)	Similar resolution (#Entries, resolution range(Å))
R_{free}	111664	3481 (2.40-2.40)
Clashscore	122126	3956 (2.40-2.40)
Ramachandran outliers	120053	3897 (2.40-2.40)
Sidechain outliers	120020	3898 (2.40-2.40)
RSRZ outliers	108989	3386 (2.40-2.40)

The table below summarises the geometric issues observed across the polymeric chains and their fit to the electron density. The red, orange, yellow and green segments on the lower bar indicate the fraction of residues that contain outliers for ≥ 3 , 2, 1 and 0 types of geometric quality criteria. A grey segment represents the fraction of residues that are not modelled. The numeric value for each fraction is indicated below the corresponding segment, with a dot representing fractions $\leq 5\%$. The upper red bar (where present) indicates the fraction of residues that have poor fit to the electron density. The numeric value is given above the bar.

Mol	Chain	Length	Quality of chain
1	A	279	<div> <div></div> <div>68%</div> <div>18%</div> <div>•</div> <div>9%</div> </div>

2 Entry composition

There are 3 unique types of molecules in this entry. The entry contains 2172 atoms, of which 0 are hydrogens and 0 are deuteriums.

In the tables below, the ZeroOcc column contains the number of atoms modelled with zero occupancy, the AltConf column contains the number of residues with at least one atom in alternate conformation and the Trace column contains the number of residues modelled with at most 2 atoms.

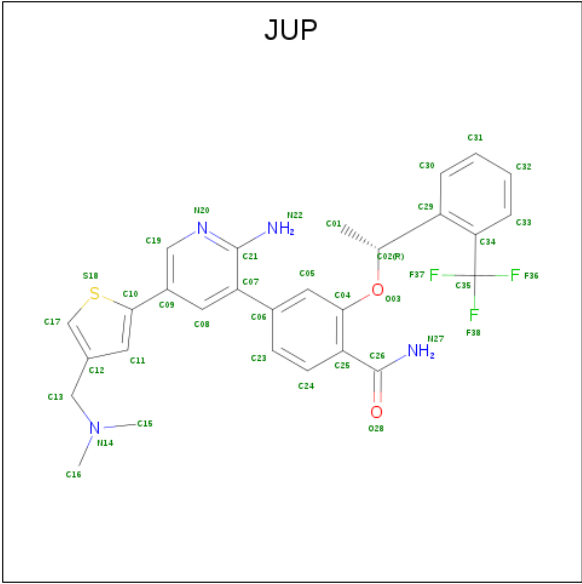
- Molecule 1 is a protein called SERINE/THREONINE-PROTEIN KINASE NEK2.

Mol	Chain	Residues	Atoms					ZeroOcc	AltConf	Trace
1	A	253	Total	C	N	O	S	0	0	0
			2066	1307	361	385	13			

There are 11 discrepancies between the modelled and reference sequences:

Chain	Residue	Modelled	Actual	Comment	Reference
A	272	LEU	-	expression tag	UNP P51955
A	273	GLU	-	expression tag	UNP P51955
A	274	HIS	-	expression tag	UNP P51955
A	275	HIS	-	expression tag	UNP P51955
A	276	HIS	-	expression tag	UNP P51955
A	277	HIS	-	expression tag	UNP P51955
A	278	HIS	-	expression tag	UNP P51955
A	279	HIS	-	expression tag	UNP P51955
A	170	GLU	THR	engineered mutation	UNP P51955
A	171	ASP	SER	engineered mutation	UNP P51955
A	175	GLU	THR	engineered mutation	UNP P51955

- Molecule 2 is 4-(2-AMINO-5-{4-[(DIMETHYLAMINO)METHYL]THIOPHEN-2-YL}PYRIDIN-3-YL)-2-{(1R)-1-[2-(TRIFLUOROMETHYL)PHENYL]ETHOXY}BENZAMIDE (three-letter code: JUP) (formula: C₂₈H₂₇F₃N₄O₂S).



Mol	Chain	Residues	Atoms						ZeroOcc	AltConf
			Total	C	F	N	O	S		
2	A	1	38	28	3	4	2	1	0	0

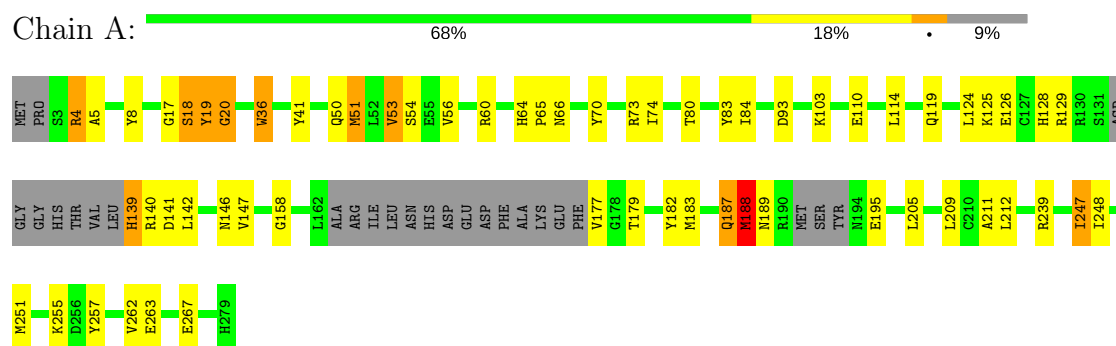
- Molecule 3 is water.

Mol	Chain	Residues	Atoms	ZeroOcc	AltConf
3	A	68	Total O 68 68	0	0

3 Residue-property plots [i](#)

These plots are drawn for all protein, RNA and DNA chains in the entry. The first graphic for a chain summarises the proportions of the various outlier classes displayed in the second graphic. The second graphic shows the sequence view annotated by issues in geometry and electron density. Residues are color-coded according to the number of geometric quality criteria for which they contain at least one outlier: green = 0, yellow = 1, orange = 2 and red = 3 or more. A red dot above a residue indicates a poor fit to the electron density ($RSRZ > 2$). Stretches of 2 or more consecutive residues without any outlier are shown as a green connector. Residues present in the sample, but not in the model, are shown in grey.

- Molecule 1: SERINE/THREONINE-PROTEIN KINASE NEK2



4 Data and refinement statistics

Property	Value	Source
Space group	C 1 2 1	Depositor
Cell constants a, b, c, α , β , γ	101.22Å 56.91Å 74.41Å 90.00° 127.12° 90.00°	Depositor
Resolution (Å)	50.38 – 2.40 50.38 – 2.40	Depositor EDS
% Data completeness (in resolution range)	99.2 (50.38-2.40) 99.2 (50.38-2.40)	Depositor EDS
R_{merge}	0.11	Depositor
R_{sym}	(Not available)	Depositor
$\langle I/\sigma(I) \rangle$ ¹	3.62 (at 2.39Å)	Xtriage
Refinement program	PHENIX (PHENIX.REFINE)	Depositor
R, R_{free}	0.204 , 0.247 0.198 , 0.235	Depositor DCC
R_{free} test set	665 reflections (5.02%)	wwPDB-VP
Wilson B-factor (Å ²)	29.5	Xtriage
Anisotropy	0.386	Xtriage
Bulk solvent k_{sol} (e/Å ³), B_{sol} (Å ²)	0.30 , 44.4	EDS
L-test for twinning ²	$\langle L \rangle = 0.50$, $\langle L^2 \rangle = 0.33$	Xtriage
Estimated twinning fraction	No twinning to report.	Xtriage
F_o, F_c correlation	0.94	EDS
Total number of atoms	2172	wwPDB-VP
Average B, all atoms (Å ²)	37.0	wwPDB-VP

Xtriage's analysis on translational NCS is as follows: *The largest off-origin peak in the Patterson function is 6.75% of the height of the origin peak. No significant pseudotranslation is detected.*

¹Intensities estimated from amplitudes.

²Theoretical values of $\langle |L| \rangle$, $\langle L^2 \rangle$ for acentric reflections are 0.5, 0.333 respectively for untwinned datasets, and 0.375, 0.2 for perfectly twinned datasets.

5 Model quality

5.1 Standard geometry

Bond lengths and bond angles in the following residue types are not validated in this section: JUP

The Z score for a bond length (or angle) is the number of standard deviations the observed value is removed from the expected value. A bond length (or angle) with $|Z| > 5$ is considered an outlier worth inspection. RMSZ is the root-mean-square of all Z scores of the bond lengths (or angles).

Mol	Chain	Bond lengths		Bond angles	
		RMSZ	$\# Z > 5$	RMSZ	$\# Z > 5$
1	A	0.73	7/2106 (0.3%)	0.75	7/2834 (0.2%)

Chiral center outliers are detected by calculating the chiral volume of a chiral center and verifying if the center is modelled as a planar moiety or with the opposite hand. A planarity outlier is detected by checking planarity of atoms in a peptide group, atoms in a mainchain group or atoms of a sidechain that are expected to be planar.

Mol	Chain	#Chirality outliers	#Planarity outliers
1	A	0	1

All (7) bond length outliers are listed below:

Mol	Chain	Res	Type	Atoms	Z	Observed(Å)	Ideal(Å)
1	A	187	GLN	CA-CB	7.76	1.71	1.53
1	A	188	MET	C-O	7.28	1.37	1.23
1	A	189	ASN	CA-CB	7.28	1.72	1.53
1	A	187	GLN	CB-CG	6.68	1.70	1.52
1	A	187	GLN	C-O	-6.65	1.10	1.23
1	A	189	ASN	N-CA	5.76	1.57	1.46
1	A	188	MET	CA-C	-5.57	1.38	1.52

All (7) bond angle outliers are listed below:

Mol	Chain	Res	Type	Atoms	Z	Observed(°)	Ideal(°)
1	A	188	MET	N-CA-C	-12.59	77.01	111.00
1	A	187	GLN	CA-C-N	-9.09	97.20	117.20
1	A	189	ASN	N-CA-CB	7.70	124.47	110.60
1	A	188	MET	C-N-CA	-7.70	102.45	121.70
1	A	189	ASN	N-CA-C	6.24	127.86	111.00
1	A	189	ASN	CB-CA-C	-6.22	97.96	110.40

Continued on next page...

Continued from previous page...

Mol	Chain	Res	Type	Atoms	Z	Observed(°)	Ideal(°)
1	A	187	GLN	CB-CA-C	5.85	122.09	110.40

There are no chirality outliers.

All (1) planarity outliers are listed below:

Mol	Chain	Res	Type	Group
1	A	187	GLN	Mainchain

5.2 Too-close contacts [i](#)

In the following table, the Non-H and H(model) columns list the number of non-hydrogen atoms and hydrogen atoms in the chain respectively. The H(added) column lists the number of hydrogen atoms added and optimized by MolProbity. The Clashes column lists the number of clashes within the asymmetric unit, whereas Symm-Clashes lists symmetry related clashes.

Mol	Chain	Non-H	H(model)	H(added)	Clashes	Symm-Clashes
1	A	2066	0	2034	48	0
2	A	38	0	27	1	0
3	A	68	0	0	3	0
All	All	2172	0	2061	49	0

The all-atom clashscore is defined as the number of clashes found per 1000 atoms (including hydrogen atoms). The all-atom clashscore for this structure is 12.

All (49) close contacts within the same asymmetric unit are listed below, sorted by their clash magnitude.

Atom-1	Atom-2	Interatomic distance (Å)	Clash overlap (Å)
1:A:4:ARG:HB2	1:A:4:ARG:CZ	2.18	0.72
1:A:36:TRP:HD1	1:A:36:TRP:O	1.72	0.71
1:A:188:MET:HA	1:A:188:MET:CE	2.21	0.70
1:A:4:ARG:HB2	1:A:4:ARG:NH1	2.10	0.66
1:A:188:MET:HE2	1:A:188:MET:HA	1.82	0.61
1:A:125:LYS:HB2	1:A:262:VAL:HG11	1.83	0.59
1:A:177:VAL:HG23	3:A:2035:HOH:O	2.03	0.59
1:A:146:ASN:HD21	1:A:158:GLY:C	2.07	0.57
1:A:255:LYS:HD2	1:A:257:TYR:CZ	2.39	0.57
1:A:50:GLN:O	1:A:53:VAL:HG12	2.06	0.55
1:A:247:ILE:HD13	1:A:251:MET:HE2	1.88	0.55
1:A:36:TRP:O	1:A:36:TRP:CD1	2.57	0.55

Continued on next page...

Continued from previous page...

Atom-1	Atom-2	Interatomic distance (Å)	Clash overlap (Å)
1:A:56:VAL:HG11	1:A:73:ARG:HD2	1.88	0.55
1:A:205:LEU:HD23	1:A:205:LEU:C	2.28	0.54
1:A:74:ILE:HB	1:A:83:TYR:HB2	1.89	0.53
1:A:124:LEU:HD21	1:A:142:LEU:HD11	1.91	0.52
1:A:66:ASN:ND2	1:A:119:GLN:HB3	2.25	0.51
1:A:211:ALA:O	1:A:212:LEU:HB2	2.10	0.50
1:A:17:GLY:CA	1:A:18:SER:CB	2.90	0.50
1:A:18:SER:O	1:A:19:TYR:C	2.49	0.50
1:A:60:ARG:HG2	1:A:70:TYR:CE1	2.46	0.50
1:A:126:GLU:CD	1:A:129:ARG:HH21	2.16	0.49
1:A:255:LYS:HD2	1:A:257:TYR:OH	2.12	0.49
1:A:177:VAL:N	3:A:2037:HOH:O	2.45	0.49
1:A:51:MET:O	1:A:54:SER:HB3	2.13	0.49
1:A:177:VAL:N	3:A:2036:HOH:O	2.47	0.47
1:A:41:TYR:CZ	1:A:80:THR:HA	2.49	0.47
1:A:139:HIS:HB3	1:A:140:ARG:H	1.51	0.47
1:A:146:ASN:HD21	1:A:158:GLY:CA	2.28	0.46
1:A:263:GLU:O	1:A:267:GLU:HG3	2.15	0.46
1:A:64:HIS:ND1	1:A:65:PRO:HD2	2.30	0.46
1:A:93:ASP:HA	1:A:147:VAL:O	2.16	0.46
1:A:247:ILE:CG2	1:A:248:ILE:N	2.78	0.46
1:A:60:ARG:HG2	1:A:70:TYR:CZ	2.51	0.45
1:A:110:GLU:O	1:A:114:LEU:HG	2.16	0.45
2:A:1280:JUP:N27	2:A:1280:JUP:O03	2.48	0.45
1:A:19:TYR:CG	1:A:20:GLY:N	2.85	0.44
1:A:8:TYR:CE1	1:A:74:ILE:HD11	2.52	0.44
1:A:36:TRP:C	1:A:36:TRP:CD1	2.90	0.43
1:A:141:ASP:O	1:A:141:ASP:OD1	2.36	0.43
1:A:141:ASP:C	1:A:141:ASP:OD1	2.58	0.42
1:A:124:LEU:HD23	1:A:124:LEU:HA	1.85	0.42
1:A:64:HIS:CE1	1:A:65:PRO:HD2	2.55	0.42
1:A:36:TRP:HA	1:A:84:ILE:O	2.20	0.42
1:A:103:LYS:N	1:A:103:LYS:HD3	2.35	0.42
1:A:128:HIS:CE1	1:A:195:GLU:HB3	2.55	0.42
1:A:126:GLU:OE1	1:A:126:GLU:HA	2.20	0.41
1:A:146:ASN:ND2	1:A:158:GLY:HA3	2.36	0.41
1:A:182:TYR:CD1	1:A:182:TYR:N	2.89	0.41

There are no symmetry-related clashes.

5.3 Torsion angles [i](#)

5.3.1 Protein backbone [i](#)

In the following table, the Percentiles column shows the percent Ramachandran outliers of the chain as a percentile score with respect to all X-ray entries followed by that with respect to entries of similar resolution.

The Analysed column shows the number of residues for which the backbone conformation was analysed, and the total number of residues.

Mol	Chain	Analysed	Favoured	Allowed	Outliers	Percentiles
1	A	245/279 (88%)	230 (94%)	12 (5%)	3 (1%)	14 20

All (3) Ramachandran outliers are listed below:

Mol	Chain	Res	Type
1	A	5	ALA
1	A	19	TYR
1	A	20	GLY

5.3.2 Protein sidechains [i](#)

In the following table, the Percentiles column shows the percent sidechain outliers of the chain as a percentile score with respect to all X-ray entries followed by that with respect to entries of similar resolution.

The Analysed column shows the number of residues for which the sidechain conformation was analysed, and the total number of residues.

Mol	Chain	Analysed	Rotameric	Outliers	Percentiles
1	A	225/252 (89%)	213 (95%)	12 (5%)	25 40

All (12) residues with a non-rotameric sidechain are listed below:

Mol	Chain	Res	Type
1	A	4	ARG
1	A	18	SER
1	A	36	TRP
1	A	51	MET
1	A	53	VAL
1	A	139	HIS
1	A	179	THR
1	A	183	MET

Continued on next page...

Continued from previous page...

Mol	Chain	Res	Type
1	A	188	MET
1	A	209	LEU
1	A	239	ARG
1	A	247	ILE

Some sidechains can be flipped to improve hydrogen bonding and reduce clashes. All (2) such sidechains are listed below:

Mol	Chain	Res	Type
1	A	66	ASN
1	A	146	ASN

5.3.3 RNA [i](#)

There are no RNA molecules in this entry.

5.4 Non-standard residues in protein, DNA, RNA chains [i](#)

There are no non-standard protein/DNA/RNA residues in this entry.

5.5 Carbohydrates [i](#)

There are no carbohydrates in this entry.

5.6 Ligand geometry [i](#)

1 ligand is modelled in this entry.

In the following table, the Counts columns list the number of bonds (or angles) for which Mogul statistics could be retrieved, the number of bonds (or angles) that are observed in the model and the number of bonds (or angles) that are defined in the Chemical Component Dictionary. The Link column lists molecule types, if any, to which the group is linked. The Z score for a bond length (or angle) is the number of standard deviations the observed value is removed from the expected value. A bond length (or angle) with $|Z| > 2$ is considered an outlier worth inspection. RMSZ is the root-mean-square of all Z scores of the bond lengths (or angles).

Mol	Type	Chain	Res	Link	Bond lengths			Bond angles		
					Counts	RMSZ	# Z > 2	Counts	RMSZ	# Z > 2
2	JUP	A	1280	-	39,41,41	2.29	12 (30%)	51,60,60	2.43	9 (17%)

In the following table, the Chirals column lists the number of chiral outliers, the number of chiral centers analysed, the number of these observed in the model and the number defined in the Chemical Component Dictionary. Similar counts are reported in the Torsion and Rings columns. '-' means no outliers of that kind were identified.

Mol	Type	Chain	Res	Link	Chirals	Torsions	Rings
2	JUP	A	1280	-	-	0/29/30/30	0/4/4/4

All (12) bond length outliers are listed below:

Mol	Chain	Res	Type	Atoms	Z	Observed(Å)	Ideal(Å)
2	A	1280	JUP	C07-C06	-4.48	1.41	1.49
2	A	1280	JUP	C10-S18	-2.33	1.70	1.72
2	A	1280	JUP	O28-C26	-2.02	1.20	1.24
2	A	1280	JUP	C05-C04	2.02	1.42	1.38
2	A	1280	JUP	C05-C06	2.06	1.43	1.39
2	A	1280	JUP	C19-C09	2.40	1.43	1.39
2	A	1280	JUP	C13-C12	2.48	1.55	1.51
2	A	1280	JUP	C32-C33	2.92	1.44	1.38
2	A	1280	JUP	O03-C04	4.09	1.44	1.37
2	A	1280	JUP	C21-N22	4.55	1.45	1.34
2	A	1280	JUP	C17-C12	6.39	1.41	1.37
2	A	1280	JUP	C26-N27	6.41	1.45	1.33

All (9) bond angle outliers are listed below:

Mol	Chain	Res	Type	Atoms	Z	Observed(°)	Ideal(°)
2	A	1280	JUP	C12-C17-S18	-9.23	101.90	112.05
2	A	1280	JUP	C04-C25-C26	-6.99	119.94	125.10
2	A	1280	JUP	C13-C12-C17	-4.62	119.15	127.45
2	A	1280	JUP	F38-C35-C34	-3.60	106.31	112.70
2	A	1280	JUP	C07-C08-C09	-2.38	117.93	121.56
2	A	1280	JUP	O03-C02-C01	2.07	111.38	106.51
2	A	1280	JUP	C19-N20-C21	2.08	120.92	118.75
2	A	1280	JUP	O03-C02-C29	4.76	116.67	107.88
2	A	1280	JUP	C11-C12-C17	7.79	117.30	104.89

There are no chirality outliers.

There are no torsion outliers.

There are no ring outliers.

1 monomer is involved in 1 short contact:

Mol	Chain	Res	Type	Clashes	Symm-Clashes
2	A	1280	JUP	1	0

5.7 Other polymers [i](#)

There are no such residues in this entry.

5.8 Polymer linkage issues [i](#)

There are no chain breaks in this entry.

6 Fit of model and data [i](#)

6.1 Protein, DNA and RNA chains [i](#)

In the following table, the column labelled ‘#RSRZ > 2’ contains the number (and percentage) of RSRZ outliers, followed by percent RSRZ outliers for the chain as percentile scores relative to all X-ray entries and entries of similar resolution. The OWAB column contains the minimum, median, 95th percentile and maximum values of the occupancy-weighted average B-factor per residue. The column labelled ‘Q < 0.9’ lists the number of (and percentage) of residues with an average occupancy less than 0.9.

Mol	Chain	Analysed	<RSRZ>	#RSRZ>2	OWAB(Å ²)	Q<0.9
1	A	253/279 (90%)	-0.24	0 100 100	16, 34, 71, 88	0

There are no RSRZ outliers to report.

6.2 Non-standard residues in protein, DNA, RNA chains [i](#)

There are no non-standard protein/DNA/RNA residues in this entry.

6.3 Carbohydrates [i](#)

There are no carbohydrates in this entry.

6.4 Ligands [i](#)

In the following table, the Atoms column lists the number of modelled atoms in the group and the number defined in the chemical component dictionary. The B-factors column lists the minimum, median, 95th percentile and maximum values of B factors of atoms in the group. The column labelled ‘Q < 0.9’ lists the number of atoms with occupancy less than 0.9.

Mol	Type	Chain	Res	Atoms	RSCC	RSR	B-factors(Å ²)	Q<0.9
2	JUP	A	1280	38/38	0.97	0.14	18,25,58,65	0

6.5 Other polymers [i](#)

There are no such residues in this entry.