



# Full wwPDB X-ray Structure Validation Report ⓘ

Mar 8, 2018 – 05:01 pm GMT

PDB ID : 1A5B  
Title : CRYO-CRYSTALLOGRAPHY OF A TRUE SUBSTRATE, INDOLE-3-GLYCEROL PHOSPHATE, BOUND TO A MUTANT (ALPHA D60N) TRYPTOPHAN SYNTHASE ALPHA2BETA2 COMPLEX REVEALS THE CORRECT ORIENTATION OF ACTIVE SITE ALPHA GLU 49  
Authors : Rhee, S.; Miles, E.W.; Davies, D.R.  
Deposited on : 1998-02-12  
Resolution : 2.00 Å(reported)

This is a Full wwPDB X-ray Structure Validation Report for a publicly released PDB entry.

We welcome your comments at [validation@mail.wwpdb.org](mailto:validation@mail.wwpdb.org)

A user guide is available at

<https://www.wwpdb.org/validation/2017/XrayValidationReportHelp>

with specific help available everywhere you see the ⓘ symbol.

---

The following versions of software and data (see [references ⓘ](#)) were used in the production of this report:

MolProbity	:	4.02b-467
Xtriage (Phenix)	:	1.13
EDS	:	trunk30967
Percentile statistics	:	20171227.v01 (using entries in the PDB archive December 27th 2017)
Refmac	:	5.8.0158
CCP4	:	7.0 (Gargrove)
Ideal geometry (proteins)	:	Engh & Huber (2001)
Ideal geometry (DNA, RNA)	:	Parkinson et al. (1996)
Validation Pipeline (wwPDB-VP)	:	trunk30967

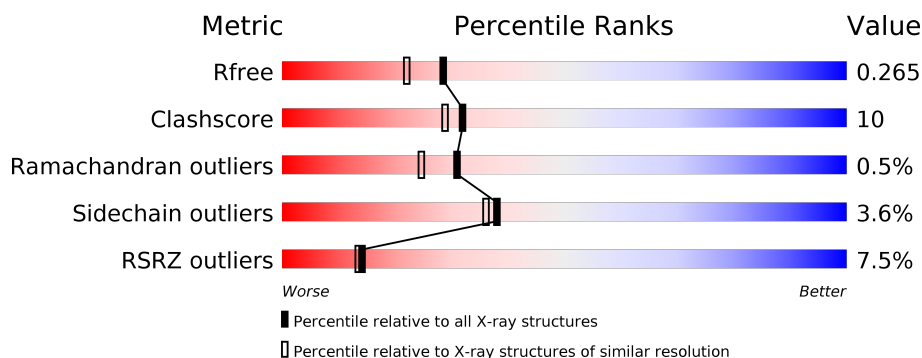
# 1 Overall quality at a glance

The following experimental techniques were used to determine the structure:

*X-RAY DIFFRACTION*

The reported resolution of this entry is 2.00 Å.

Percentile scores (ranging between 0-100) for global validation metrics of the entry are shown in the following graphic. The table shows the number of entries on which the scores are based.



Metric	Whole archive (#Entries)	Similar resolution (#Entries, resolution range(Å))
$R_{free}$	111664	7193 (2.00-2.00)
Clashscore	122126	8267 (2.00-2.00)
Ramachandran outliers	120053	8166 (2.00-2.00)
Sidechain outliers	120020	8165 (2.00-2.00)
RSRZ outliers	108989	7011 (2.00-2.00)

The table below summarises the geometric issues observed across the polymeric chains and their fit to the electron density. The red, orange, yellow and green segments on the lower bar indicate the fraction of residues that contain outliers for  $\geq 3$ , 2, 1 and 0 types of geometric quality criteria. A grey segment represents the fraction of residues that are not modelled. The numeric value for each fraction is indicated below the corresponding segment, with a dot representing fractions  $\leq 5\%$ . The upper red bar (where present) indicates the fraction of residues that have poor fit to the electron density. The numeric value is given above the bar.

Mol	Chain	Length	Quality of chain
1	A	268	<div> <div>6%</div> <div> <div></div> <div>72%</div> <div>19%</div> <div>7%</div> </div> </div>
2	B	397	<div> <div>8%</div> <div> <div></div> <div>77%</div> <div>19%</div> <div></div> </div> </div>

## 2 Entry composition

There are 6 unique types of molecules in this entry. The entry contains 5203 atoms, of which 0 are hydrogens and 0 are deuteriums.

In the tables below, the ZeroOcc column contains the number of atoms modelled with zero occupancy, the AltConf column contains the number of residues with at least one atom in alternate conformation and the Trace column contains the number of residues modelled with at most 2 atoms.

- Molecule 1 is a protein called TRYPTOPHAN SYNTHASE (ALPHA CHAIN).

Mol	Chain	Residues	Atoms					ZeroOcc	AltConf	Trace
1	A	249	Total	C	N	O	S	0	0	0
			1881	1198	323	352	8			

There is a discrepancy between the modelled and reference sequences:

Chain	Residue	Modelled	Actual	Comment	Reference
A	60	ASN	ASP	ENGINEERED	UNP P00929

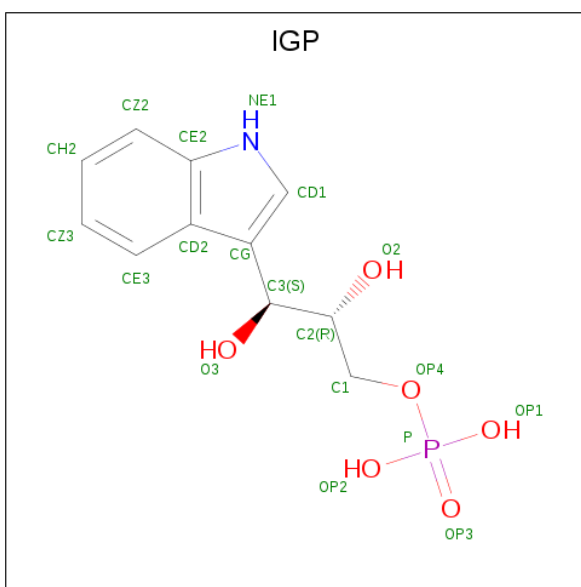
- Molecule 2 is a protein called TRYPTOPHAN SYNTHASE (BETA CHAIN).

Mol	Chain	Residues	Atoms					ZeroOcc	AltConf	Trace
2	B	389	Total	C	N	O	S	0	0	0
			2950	1855	518	558	19			

There is a discrepancy between the modelled and reference sequences:

Chain	Residue	Modelled	Actual	Comment	Reference
B	396	LEU	GLU	CONFLICT	UNP P0A2K1

- Molecule 3 is INDOLE-3-GLYCEROL PHOSPHATE (three-letter code: IGP) (formula:  $C_{11}H_{14}NO_6P$ ).

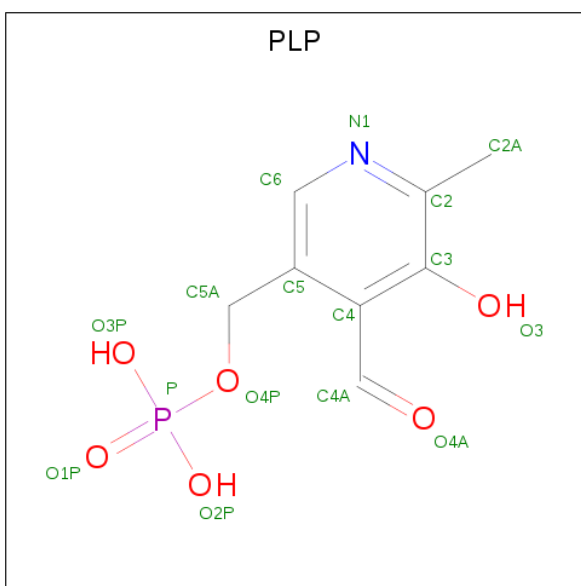


Mol	Chain	Residues	Atoms					ZeroOcc	AltConf
3	A	1	Total	C	N	O	P	0	0
			19	11	1	6	1		

- Molecule 4 is POTASSIUM ION (three-letter code: K) (formula: K).

Mol	Chain	Residues	Atoms		ZeroOcc	AltConf
4	B	1	Total	K	0	0
			1	1		

- Molecule 5 is PYRIDOXAL-5'-PHOSPHATE (three-letter code: PLP) (formula: C<sub>8</sub>H<sub>10</sub>NO<sub>6</sub>P).



Mol	Chain	Residues	Atoms					ZeroOcc	AltConf
5	B	1	Total	C	N	O	P	0	0
			15	8	1	5	1		

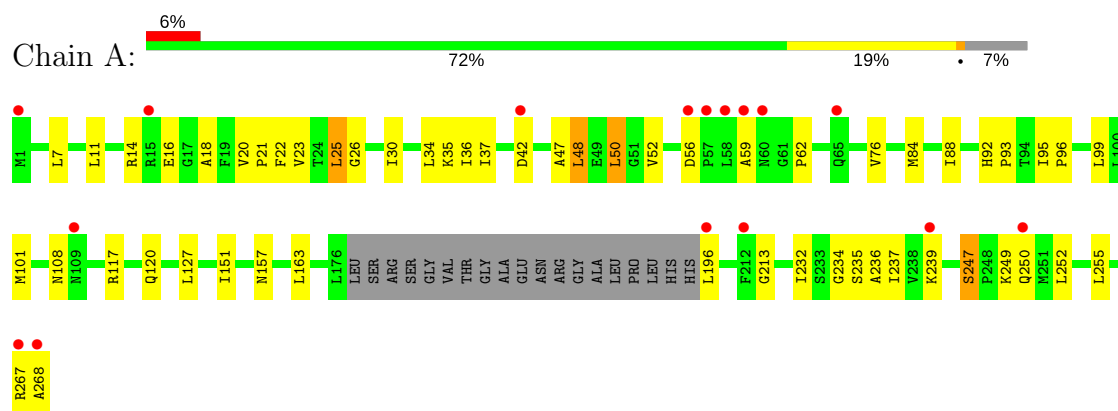
- Molecule 6 is water.

Mol	Chain	Residues	Atoms		ZeroOcc	AltConf
6	A	146	Total	O	0	0
			146	146		
6	B	191	Total	O	0	0
			191	191		

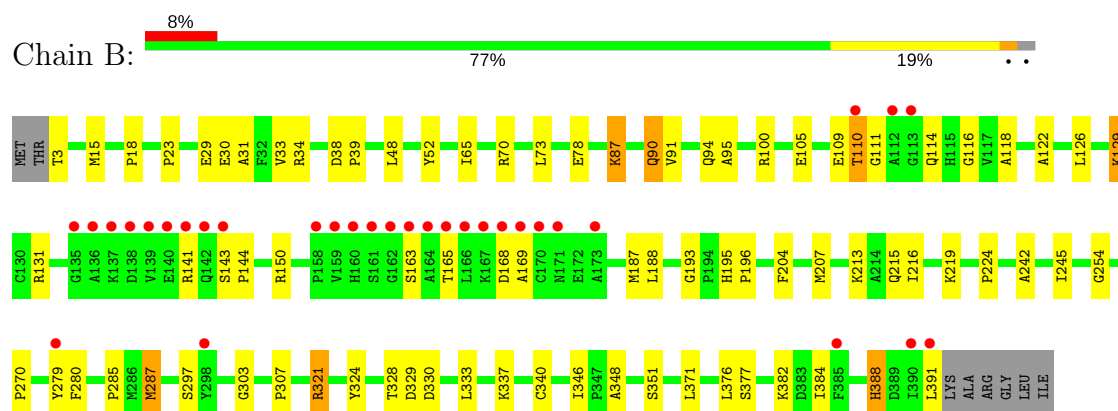
### 3 Residue-property plots [i](#)

These plots are drawn for all protein, RNA and DNA chains in the entry. The first graphic for a chain summarises the proportions of the various outlier classes displayed in the second graphic. The second graphic shows the sequence view annotated by issues in geometry and electron density. Residues are color-coded according to the number of geometric quality criteria for which they contain at least one outlier: green = 0, yellow = 1, orange = 2 and red = 3 or more. A red dot above a residue indicates a poor fit to the electron density ( $RSRZ > 2$ ). Stretches of 2 or more consecutive residues without any outlier are shown as a green connector. Residues present in the sample, but not in the model, are shown in grey.

#### • Molecule 1: TRYPTOPHAN SYNTHASE (ALPHA CHAIN)



#### • Molecule 2: TRYPTOPHAN SYNTHASE (BETA CHAIN)



## 4 Data and refinement statistics

Property	Value	Source
Space group	C 1 2 1	Depositor
Cell constants a, b, c, $\alpha$ , $\beta$ , $\gamma$	182.60Å 59.70Å 67.40Å 90.00° 94.60° 90.00°	Depositor
Resolution (Å)	8.00 – 2.00 8.00 – 2.00	Depositor EDS
% Data completeness (in resolution range)	82.2 (8.00-2.00) 88.5 (8.00-2.00)	Depositor EDS
$R_{merge}$	(Not available)	Depositor
$R_{sym}$	0.06	Depositor
$\langle I/\sigma(I) \rangle$ <sup>1</sup>	1.84 (at 2.00Å)	Xtriage
Refinement program	X-PLOR	Depositor
R, $R_{free}$	0.220 , 0.283 0.212 , 0.265	Depositor DCC
$R_{free}$ test set	4516 reflections (10.10%)	wwPDB-VP
Wilson B-factor (Å <sup>2</sup> )	21.9	Xtriage
Anisotropy	0.566	Xtriage
Bulk solvent $k_{sol}$ (e/Å <sup>3</sup> ), $B_{sol}$ (Å <sup>2</sup> )	0.49 , 104.5	EDS
L-test for twinning <sup>2</sup>	$\langle  L  \rangle = 0.49$ , $\langle L^2 \rangle = 0.33$	Xtriage
Estimated twinning fraction	No twinning to report.	Xtriage
$F_o, F_c$ correlation	0.94	EDS
Total number of atoms	5203	wwPDB-VP
Average B, all atoms (Å <sup>2</sup> )	27.0	wwPDB-VP

Xtriage's analysis on translational NCS is as follows: *The largest off-origin peak in the Patterson function is 6.39% of the height of the origin peak. No significant pseudotranslation is detected.*

<sup>1</sup>Intensities estimated from amplitudes.

<sup>2</sup>Theoretical values of  $\langle |L| \rangle$ ,  $\langle L^2 \rangle$  for acentric reflections are 0.5, 0.333 respectively for untwinned datasets, and 0.375, 0.2 for perfectly twinned datasets.

## 5 Model quality

### 5.1 Standard geometry

Bond lengths and bond angles in the following residue types are not validated in this section: K, IGP, PLP

The Z score for a bond length (or angle) is the number of standard deviations the observed value is removed from the expected value. A bond length (or angle) with  $|Z| > 5$  is considered an outlier worth inspection. RMSZ is the root-mean-square of all Z scores of the bond lengths (or angles).

Mol	Chain	Bond lengths		Bond angles	
		RMSZ	$\# Z  > 5$	RMSZ	$\# Z  > 5$
1	A	0.35	0/1917	0.61	0/2602
2	B	0.39	1/3008 (0.0%)	0.63	0/4064
All	All	0.38	1/4925 (0.0%)	0.62	0/6666

All (1) bond length outliers are listed below:

Mol	Chain	Res	Type	Atoms	Z	Observed(Å)	Ideal(Å)
2	B	87	LYS	CB-CG	5.85	1.68	1.52

There are no bond angle outliers.

There are no chirality outliers.

There are no planarity outliers.

### 5.2 Too-close contacts

In the following table, the Non-H and H(model) columns list the number of non-hydrogen atoms and hydrogen atoms in the chain respectively. The H(added) column lists the number of hydrogen atoms added and optimized by MolProbity. The Clashes column lists the number of clashes within the asymmetric unit, whereas Symm-Clashes lists symmetry related clashes.

Mol	Chain	Non-H	H(model)	H(added)	Clashes	Symm-Clashes
1	A	1881	0	1892	39	0
2	B	2950	0	2924	58	0
3	A	19	0	12	1	0
4	B	1	0	0	0	0
5	B	15	0	6	1	0
6	A	146	0	0	3	0
6	B	191	0	0	5	0
All	All	5203	0	4834	93	0



The all-atom clashscore is defined as the number of clashes found per 1000 atoms (including hydrogen atoms). The all-atom clashscore for this structure is 10.

All (93) close contacts within the same asymmetric unit are listed below, sorted by their clash magnitude.

Atom-1	Atom-2	Interatomic distance (Å)	Clash overlap (Å)
2:B:90:GLN:HE22	2:B:94:GLN:HE21	1.36	0.74
1:A:16:GLU:HG3	1:A:267:ARG:HA	1.69	0.72
2:B:163:SER:HB3	2:B:168:ASP:HB3	1.72	0.72
2:B:340:CYS:SG	2:B:346:ILE:HD13	2.31	0.70
2:B:90:GLN:HE22	2:B:94:GLN:NE2	1.90	0.68
2:B:87:LYS:HD2	2:B:114:GLN:HG3	1.76	0.67
2:B:384:ILE:O	2:B:388:HIS:HB2	1.98	0.64
2:B:90:GLN:NE2	2:B:94:GLN:HE21	1.97	0.62
1:A:42:ASP:HB3	6:A:594:HOH:O	1.99	0.62
1:A:20:VAL:HG22	1:A:47:ALA:HB3	1.80	0.62
1:A:236:ALA:HA	1:A:239:LYS:HD2	1.81	0.61
1:A:99:LEU:HB3	1:A:101:MET:HE2	1.83	0.59
2:B:285:PRO:HG3	6:B:671:HOH:O	2.03	0.59
2:B:169:ALA:HA	6:B:612:HOH:O	2.04	0.58
2:B:129:LYS:H	2:B:129:LYS:HD2	1.69	0.58
2:B:195:HIS:CD2	2:B:196:PRO:HA	2.40	0.56
2:B:337:LYS:HD2	2:B:391:LEU:HD11	1.86	0.56
2:B:193:GLY:HA2	2:B:280:PHE:O	2.07	0.54
2:B:216:ILE:HG21	2:B:224:PRO:HD3	1.89	0.53
2:B:150:ARG:HD2	6:B:600:HOH:O	2.08	0.53
2:B:105:GLU:HG2	2:B:131:ARG:HH12	1.76	0.51
1:A:22:PHE:HB3	1:A:234:GLY:HA2	1.92	0.50
1:A:234:GLY:HA3	3:A:271:IGP:H12	1.92	0.50
1:A:157:ASN:ND2	2:B:23:PRO:HG2	2.26	0.50
1:A:35:LYS:HE2	1:A:252:LEU:HD11	1.94	0.50
1:A:196:LEU:N	6:A:603:HOH:O	2.44	0.49
2:B:328:THR:HG22	2:B:330:ASP:H	1.76	0.49
2:B:91:VAL:HG13	2:B:187:MET:SD	2.51	0.49
1:A:37:ILE:HG23	1:A:48:LEU:HD21	1.94	0.49
2:B:297:SER:OG	2:B:307:PRO:HA	2.12	0.49
2:B:245:ILE:O	2:B:321:ARG:NH1	2.46	0.48
1:A:23:VAL:HG12	1:A:50:LEU:HD12	1.95	0.48
1:A:36:ILE:HG23	1:A:255:LEU:HD13	1.94	0.48
2:B:30:GLU:O	2:B:34:ARG:HG3	2.14	0.48
2:B:195:HIS:HD2	6:B:670:HOH:O	1.96	0.48
2:B:215:GLN:O	2:B:219:LYS:HD3	2.14	0.48
1:A:26:GLY:HA3	1:A:76:VAL:HG21	1.96	0.47

*Continued on next page...*

*Continued from previous page...*

Atom-1	Atom-2	Interatomic distance (Å)	Clash overlap (Å)
2:B:195:HIS:CG	2:B:196:PRO:HA	2.49	0.47
2:B:165:THR:H	2:B:168:ASP:HB2	1.79	0.47
2:B:31:ALA:HA	2:B:34:ARG:NE	2.29	0.47
2:B:78:GLU:HB2	2:B:377:SER:HA	1.97	0.47
1:A:25:LEU:HD22	1:A:50:LEU:HB3	1.96	0.47
1:A:11:LEU:CD1	1:A:18:ALA:HB2	2.44	0.46
2:B:143:SER:N	2:B:144:PRO:HD2	2.30	0.46
2:B:303:GLY:O	5:B:501:PLP:H5A1	2.14	0.46
1:A:52:VAL:HG13	1:A:101:MET:CE	2.45	0.46
2:B:129:LYS:N	2:B:129:LYS:HD2	2.31	0.46
1:A:235:SER:O	1:A:239:LYS:HG3	2.16	0.46
2:B:38:ASP:HA	2:B:39:PRO:HD2	1.82	0.46
1:A:117:ARG:HD2	1:A:120:GLN:HE21	1.81	0.46
1:A:99:LEU:HB3	1:A:101:MET:CE	2.46	0.46
1:A:117:ARG:HH11	1:A:120:GLN:NE2	2.14	0.45
1:A:84:MET:O	1:A:88:ILE:HG13	2.16	0.45
2:B:91:VAL:HG12	2:B:122:ALA:HB2	1.98	0.45
1:A:247:SER:HB2	1:A:250:GLN:HB2	1.97	0.45
2:B:29:GLU:OE2	2:B:195:HIS:HE1	1.98	0.45
2:B:110:THR:HG22	2:B:111:GLY:H	1.81	0.45
2:B:213:LYS:O	2:B:216:ILE:HG22	2.17	0.45
1:A:108:ASN:HA	6:A:717:HOH:O	2.17	0.44
2:B:141:ARG:HH11	2:B:141:ARG:HG3	1.81	0.44
2:B:90:GLN:HA	2:B:204:PHE:HB3	2.00	0.44
2:B:270:PRO:HB3	2:B:287:MET:HE2	1.99	0.44
2:B:95:ALA:HB1	2:B:126:LEU:HD12	2.00	0.43
1:A:267:ARG:HG2	1:A:268:ALA:N	2.33	0.43
2:B:31:ALA:HA	2:B:34:ARG:HE	1.83	0.43
1:A:163:LEU:HD21	1:A:196:LEU:HD22	2.00	0.43
1:A:56:ASP:HB3	2:B:279:TYR:CZ	2.54	0.43
2:B:110:THR:HG21	2:B:116:GLY:H	1.83	0.42
2:B:91:VAL:HG12	2:B:122:ALA:CB	2.50	0.42
1:A:59:ALA:HB2	2:B:18:PRO:HG2	2.01	0.42
1:A:7:LEU:O	1:A:11:LEU:HG	2.20	0.42
2:B:15:MET:HG2	2:B:195:HIS:HB3	2.00	0.42
2:B:105:GLU:HG3	2:B:129:LYS:HB2	2.00	0.42
1:A:95:ILE:HA	1:A:96:PRO:HD3	1.96	0.41
2:B:48:LEU:O	2:B:52:TYR:HB3	2.20	0.41
1:A:30:ILE:O	1:A:34:LEU:HD22	2.21	0.41
2:B:348:ALA:HB1	2:B:382:LYS:NZ	2.35	0.41
1:A:237:ILE:HD12	1:A:237:ILE:N	2.36	0.41

*Continued on next page...*

Continued from previous page...

Atom-1	Atom-2	Interatomic distance (Å)	Clash overlap (Å)
2:B:254:GLY:O	2:B:324:TYR:HA	2.20	0.41
1:A:92:HIS:HA	1:A:93:PRO:HD2	1.89	0.41
2:B:3:THR:N	6:B:505:HOH:O	2.53	0.41
1:A:56:ASP:CB	2:B:279:TYR:CZ	3.04	0.41
2:B:65:ILE:HD11	2:B:73:LEU:HD23	2.03	0.41
2:B:328:THR:HG22	2:B:329:ASP:N	2.35	0.41
2:B:163:SER:HB3	2:B:168:ASP:CB	2.48	0.41
2:B:38:ASP:OD2	2:B:100:ARG:NH2	2.53	0.41
2:B:29:GLU:O	2:B:33:VAL:HG23	2.21	0.41
2:B:91:VAL:HG11	2:B:118:ALA:O	2.21	0.41
1:A:249:LYS:HA	1:A:249:LYS:HD3	1.92	0.40
1:A:21:PRO:HD2	1:A:47:ALA:O	2.22	0.40
1:A:127:LEU:HB2	1:A:151:ILE:HB	2.02	0.40
1:A:14:ARG:HH11	1:A:14:ARG:HG3	1.87	0.40
1:A:20:VAL:HB	1:A:232:ILE:HG12	2.04	0.40

There are no symmetry-related clashes.

## 5.3 Torsion angles

### 5.3.1 Protein backbone

In the following table, the Percentiles column shows the percent Ramachandran outliers of the chain as a percentile score with respect to all X-ray entries followed by that with respect to entries of similar resolution.

The Analysed column shows the number of residues for which the backbone conformation was analysed, and the total number of residues.

Mol	Chain	Analysed	Favoured	Allowed	Outliers	Percentiles	
1	A	245/268 (91%)	234 (96%)	9 (4%)	2 (1%)	21	14
2	B	387/397 (98%)	369 (95%)	17 (4%)	1 (0%)	43	39
All	All	632/665 (95%)	603 (95%)	26 (4%)	3 (0%)	31	25

All (3) Ramachandran outliers are listed below:

Mol	Chain	Res	Type
1	A	62	PRO
2	B	242	ALA
1	A	213	GLY

### 5.3.2 Protein sidechains ⓘ

In the following table, the Percentiles column shows the percent sidechain outliers of the chain as a percentile score with respect to all X-ray entries followed by that with respect to entries of similar resolution.

The Analysed column shows the number of residues for which the sidechain conformation was analysed, and the total number of residues.

Mol	Chain	Analysed	Rotameric	Outliers	Percentiles	
1	A	194/208 (93%)	190 (98%)	4 (2%)	56	60
2	B	305/311 (98%)	291 (95%)	14 (5%)	29	25
All	All	499/519 (96%)	481 (96%)	18 (4%)	38	36

All (18) residues with a non-rotameric sidechain are listed below:

Mol	Chain	Res	Type
1	A	25	LEU
1	A	48	LEU
1	A	50	LEU
1	A	247	SER
2	B	70	ARG
2	B	90	GLN
2	B	109	GLU
2	B	110	THR
2	B	129	LYS
2	B	188	LEU
2	B	207	MET
2	B	287	MET
2	B	321	ARG
2	B	333	LEU
2	B	351	SER
2	B	371	LEU
2	B	376	LEU
2	B	388	HIS

Some sidechains can be flipped to improve hydrogen bonding and reduce clashes. All (4) such sidechains are listed below:

Mol	Chain	Res	Type
1	A	120	GLN
2	B	44	GLN
2	B	90	GLN
2	B	195	HIS

### 5.3.3 RNA ⓘ

There are no RNA molecules in this entry.

## 5.4 Non-standard residues in protein, DNA, RNA chains ⓘ

There are no non-standard protein/DNA/RNA residues in this entry.

## 5.5 Carbohydrates ⓘ

There are no carbohydrates in this entry.

## 5.6 Ligand geometry ⓘ

Of 3 ligands modelled in this entry, 1 is monoatomic - leaving 2 for Mogul analysis.

In the following table, the Counts columns list the number of bonds (or angles) for which Mogul statistics could be retrieved, the number of bonds (or angles) that are observed in the model and the number of bonds (or angles) that are defined in the Chemical Component Dictionary. The Link column lists molecule types, if any, to which the group is linked. The Z score for a bond length (or angle) is the number of standard deviations the observed value is removed from the expected value. A bond length (or angle) with  $|Z| > 2$  is considered an outlier worth inspection. RMSZ is the root-mean-square of all Z scores of the bond lengths (or angles).

Mol	Type	Chain	Res	Link	Bond lengths			Bond angles		
					Counts	RMSZ	# Z  > 2	Counts	RMSZ	# Z  > 2
3	IGP	A	271	-	20,20,20	1.99	4 (20%)	24,29,29	1.07	2 (8%)
5	PLP	B	501	2	15,15,16	5.02	9 (60%)	20,22,23	2.07	5 (25%)

In the following table, the Chirals column lists the number of chiral outliers, the number of chiral centers analysed, the number of these observed in the model and the number defined in the Chemical Component Dictionary. Similar counts are reported in the Torsion and Rings columns. '-' means no outliers of that kind were identified.

Mol	Type	Chain	Res	Link	Chirals	Torsions	Rings
3	IGP	A	271	-	-	0/10/14/14	0/2/2/2
5	PLP	B	501	2	-	0/6/6/8	0/1/1/1

All (13) bond length outliers are listed below:

Mol	Chain	Res	Type	Atoms	Z	Observed(Å)	Ideal(Å)
5	B	501	PLP	P-O3P	-4.41	1.37	1.54

*Continued on next page...*

*Continued from previous page...*

Mol	Chain	Res	Type	Atoms	Z	Observed(Å)	Ideal(Å)
5	B	501	PLP	P-O4P	-4.30	1.46	1.60
3	A	271	IGP	CE2-NE1	-2.62	1.30	1.38
3	A	271	IGP	CD1-NE1	3.14	1.43	1.36
3	A	271	IGP	CZ3-CE3	3.71	1.45	1.36
5	B	501	PLP	C6-N1	4.39	1.43	1.34
5	B	501	PLP	C2-N1	4.56	1.43	1.33
5	B	501	PLP	C6-C5	5.22	1.48	1.37
3	A	271	IGP	CG-CD2	5.30	1.46	1.40
5	B	501	PLP	C5-C4	6.28	1.47	1.40
5	B	501	PLP	C4A-C4	6.82	1.65	1.51
5	B	501	PLP	C3-C4	8.71	1.59	1.40
5	B	501	PLP	C3-C2	9.94	1.47	1.40

All (7) bond angle outliers are listed below:

Mol	Chain	Res	Type	Atoms	Z	Observed(°)	Ideal(°)
5	B	501	PLP	C3-C2-N1	-2.81	117.06	120.75
3	A	271	IGP	CZ3-CE3-CD2	-2.38	117.63	120.89
3	A	271	IGP	CG-C3-C2	-2.03	108.97	112.14
5	B	501	PLP	C6-N1-C2	3.28	125.51	119.19
5	B	501	PLP	O4P-C5A-C5	3.81	116.72	109.39
5	B	501	PLP	C2A-C2-C3	4.16	125.92	120.96
5	B	501	PLP	O3P-P-O4P	4.96	119.94	106.73

There are no chirality outliers.

There are no torsion outliers.

There are no ring outliers.

2 monomers are involved in 2 short contacts:

Mol	Chain	Res	Type	Clashes	Symm-Clashes
3	A	271	IGP	1	0
5	B	501	PLP	1	0

## 5.7 Other polymers ⓘ

There are no such residues in this entry.

## 5.8 Polymer linkage issues ⓘ

There are no chain breaks in this entry.

## 6 Fit of model and data ⓘ

### 6.1 Protein, DNA and RNA chains ⓘ

In the following table, the column labelled ‘#RSRZ > 2’ contains the number (and percentage) of RSRZ outliers, followed by percent RSRZ outliers for the chain as percentile scores relative to all X-ray entries and entries of similar resolution. The OWAB column contains the minimum, median, 95<sup>th</sup> percentile and maximum values of the occupancy-weighted average B-factor per residue. The column labelled ‘Q < 0.9’ lists the number of (and percentage) of residues with an average occupancy less than 0.9.

Mol	Chain	Analysed	<RSRZ>	#RSRZ > 2		OWAB(Å <sup>2</sup> )	Q < 0.9
1	A	249/268 (92%)	0.09	16 (6%)	19 19	9, 23, 56, 84	4 (1%)
2	B	389/397 (97%)	-0.05	32 (8%)	11 11	8, 19, 67, 89	3 (0%)
All	All	638/665 (95%)	0.01	48 (7%)	14 13	8, 21, 61, 89	7 (1%)

All (48) RSRZ outliers are listed below:

Mol	Chain	Res	Type	RSRZ
2	B	163	SER	8.6
2	B	159	VAL	7.4
1	A	212	PHE	7.4
1	A	59	ALA	6.9
1	A	268	ALA	6.9
2	B	160	HIS	5.9
2	B	164	ALA	5.4
2	B	168	ASP	5.1
2	B	112	ALA	4.6
2	B	162	GLY	4.6
2	B	140	GLU	4.5
2	B	139	VAL	4.5
1	A	250	GLN	4.4
1	A	60	ASN	4.3
2	B	138	ASP	4.2
2	B	171	ASN	4.1
2	B	161	SER	4.0
1	A	57	PRO	3.8
2	B	141	ARG	3.7
2	B	391	LEU	3.4
2	B	165	THR	3.3
1	A	1	MET	3.1
1	A	58	LEU	3.1
2	B	166	LEU	3.0

*Continued on next page...*



*Continued from previous page...*

Mol	Chain	Res	Type	RSRZ
2	B	169	ALA	3.0
1	A	42	ASP	2.9
1	A	196	LEU	2.8
2	B	137	LYS	2.8
2	B	142	GLN	2.7
2	B	136	ALA	2.7
1	A	65	GLN	2.7
1	A	267	ARG	2.6
2	B	110	THR	2.6
2	B	170	CYS	2.6
1	A	56	ASP	2.5
2	B	173	ALA	2.5
2	B	158	PRO	2.4
2	B	143	SER	2.4
2	B	135	GLY	2.3
1	A	109	ASN	2.3
2	B	279	TYR	2.3
1	A	15	ARG	2.2
2	B	390	ILE	2.2
1	A	239	LYS	2.2
2	B	113	GLY	2.1
2	B	385	PHE	2.1
2	B	298	TYR	2.1
2	B	167	LYS	2.0

## 6.2 Non-standard residues in protein, DNA, RNA chains [i](#)

There are no non-standard protein/DNA/RNA residues in this entry.

## 6.3 Carbohydrates [i](#)

There are no carbohydrates in this entry.

## 6.4 Ligands [i](#)

In the following table, the Atoms column lists the number of modelled atoms in the group and the number defined in the chemical component dictionary. The B-factors column lists the minimum, median, 95<sup>th</sup> percentile and maximum values of B factors of atoms in the group. The column labelled 'Q< 0.9' lists the number of atoms with occupancy less than 0.9.

Mol	Type	Chain	Res	Atoms	RSCC	RSR	B-factors( $\text{\AA}^2$ )	Q<0.9
3	IGP	A	271	19/19	0.81	0.20	36,53,61,62	0
4	K	B	500	1/1	0.88	0.09	41,41,41,41	0
5	PLP	B	501	15/16	0.97	0.08	17,22,26,31	0

## 6.5 Other polymers [i](#)

There are no such residues in this entry.