



wwPDB X-ray Structure Validation Summary Report ⓘ

Aug 30, 2018 – 04:36 PM EDT

PDB ID : 1A5H
Title : CATALYTIC DOMAIN OF HUMAN TWO-CHAIN TISSUE PLASMINO-
GEN ACTIVATOR COMPLEX OF A BIS-BENZAMIDINE
Authors : Renatus, M.; Bode, W.; Stubbs, M.T.
Deposited on : 1998-02-17
Resolution : 2.90 Å(reported)

This is a wwPDB X-ray Structure Validation Summary Report for a publicly released PDB entry.

We welcome your comments at validation@mail.wwpdb.org

A user guide is available at

<https://www.wwpdb.org/validation/2017/XrayValidationReportHelp>

with specific help available everywhere you see the ⓘ symbol.

The following versions of software and data (see [references ⓘ](#)) were used in the production of this report:

MolProbity : 4.02b-467
Mogul : 1.7.3 (157068), CSD as539be (2018)
Xtriage (Phenix) : **NOT EXECUTED**
EDS : **NOT EXECUTED**
Percentile statistics : 20171227.v01 (using entries in the PDB archive December 27th 2017)
Ideal geometry (proteins) : Engh & Huber (2001)
Ideal geometry (DNA, RNA) : Parkinson et al. (1996)
Validation Pipeline (wwPDB-VP) : rb-20031172

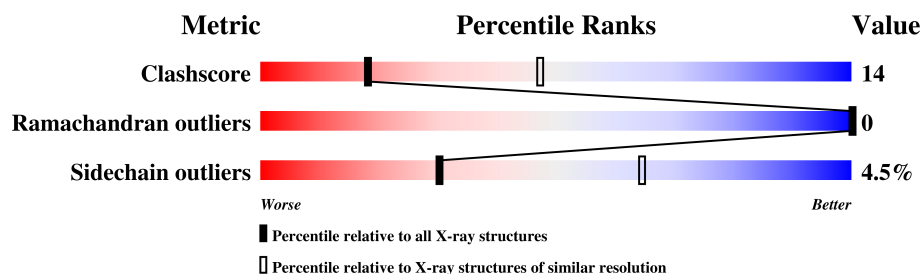
1 Overall quality at a glance

The following experimental techniques were used to determine the structure:

X-RAY DIFFRACTION

The reported resolution of this entry is 2.90 Å.

Percentile scores (ranging between 0-100) for global validation metrics of the entry are shown in the following graphic. The table shows the number of entries on which the scores are based.



Metric	Whole archive (#Entries)	Similar resolution (#Entries, resolution range(Å))
Clashscore	122126	1924 (2.90-2.90)
Ramachandran outliers	120053	1884 (2.90-2.90)
Sidechain outliers	120020	1886 (2.90-2.90)

The table below summarises the geometric issues observed across the polymeric chains and their fit to the electron density. The red, orange, yellow and green segments on the lower bar indicate the fraction of residues that contain outliers for ≥ 3 , 2, 1 and 0 types of geometric quality criteria. A grey segment represents the fraction of residues that are not modelled. The numeric value for each fraction is indicated below the corresponding segment, with a dot representing fractions $\leq 5\%$.

Note EDS was not executed.

Mol	Chain	Length	Quality of chain
1	C	7	<div> <div>29%</div> <div>71%</div> </div>
1	D	7	<div> <div>57%</div> <div>43%</div> </div>
2	A	252	<div> <div>72%</div> <div>27%</div> <div>.</div> </div>
2	B	252	<div> <div>69%</div> <div>30%</div> <div>.</div> </div>

2 Entry composition [i](#)

There are 4 unique types of molecules in this entry. The entry contains 5341 atoms, of which 1128 are hydrogens and 0 are deuteriums.

In the tables below, the ZeroOcc column contains the number of atoms modelled with zero occupancy, the AltConf column contains the number of residues with at least one atom in alternate conformation and the Trace column contains the number of residues modelled with at most 2 atoms.

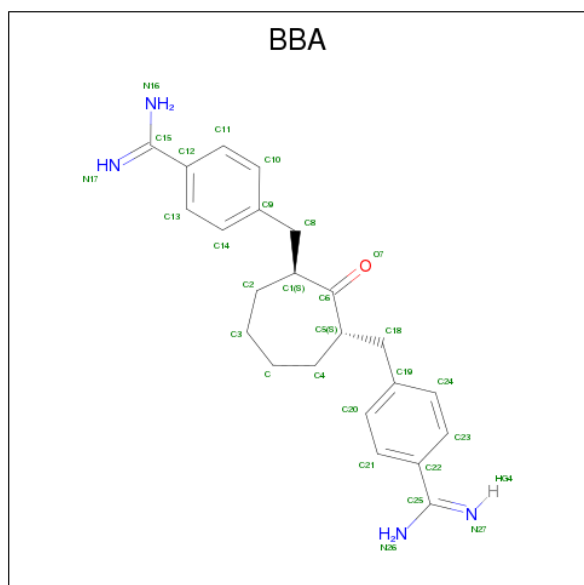
- Molecule 1 is a protein called TISSUE PLASMINOGEN ACTIVATOR.

Mol	Chain	Residues	Atoms						ZeroOcc	AltConf	Trace
1	C	7	Total	C	H	N	O	S	31	0	0
			76	35	18	11	11	1			
1	D	7	Total	C	H	N	O	S	31	0	0
			76	35	18	11	11	1			

- Molecule 2 is a protein called TISSUE PLASMINOGEN ACTIVATOR.

Mol	Chain	Residues	Atoms						ZeroOcc	AltConf	Trace
2	A	252	Total	C	H	N	O	S	601	0	0
			2422	1238	447	352	371	14			
2	B	252	Total	C	H	N	O	S	595	0	0
			2422	1238	447	352	371	14			

- Molecule 3 is 2,7-BIS-(4-AMIDINO BENZYLIDENE)-CYCLOHEPTAN-1-ONE (three-letter code: BBA) (formula: C₂₃H₂₈N₄O).



Mol	Chain	Residues	Atoms					ZeroOcc	AltConf
3	A	1	Total	C	H	N	O	8	0
			36	23	8	4	1		
3	B	1	Total	C	H	N	O	8	0
			36	23	8	4	1		

- Molecule 4 is water.

Mol	Chain	Residues	Atoms			ZeroOcc	AltConf
4	C	2	Total	H	O	4	0
			6	4	2		
4	A	46	Total	H	O	92	0
			138	92	46		
4	D	1	Total	H	O	2	0
			3	2	1		
4	B	42	Total	H	O	84	0
			126	84	42		

3 Residue-property plots

These plots are drawn for all protein, RNA and DNA chains in the entry. The first graphic for a chain summarises the proportions of the various outlier classes displayed in the second graphic. The second graphic shows the sequence view annotated by issues in geometry. Residues are color-coded according to the number of geometric quality criteria for which they contain at least one outlier: green = 0, yellow = 1, orange = 2 and red = 3 or more. Stretches of 2 or more consecutive residues without any outlier are shown as a green connector. Residues present in the sample, but not in the model, are shown in grey.

Note EDS was not executed.

• Molecule 1: TISSUE PLASMINOGEN ACTIVATOR

Chain C: 



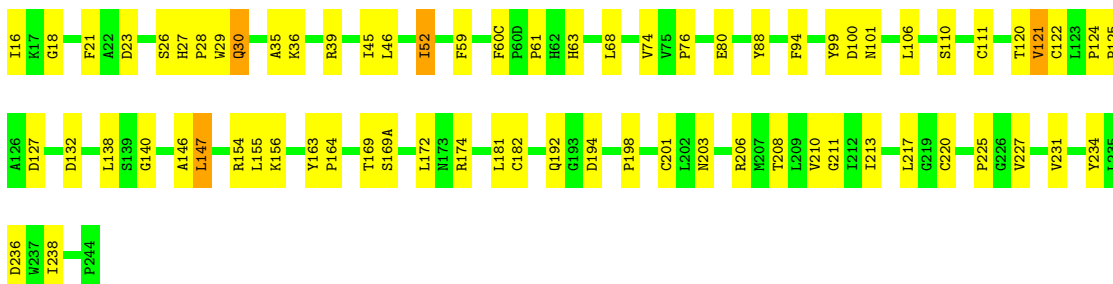
• Molecule 1: TISSUE PLASMINOGEN ACTIVATOR

Chain D: 



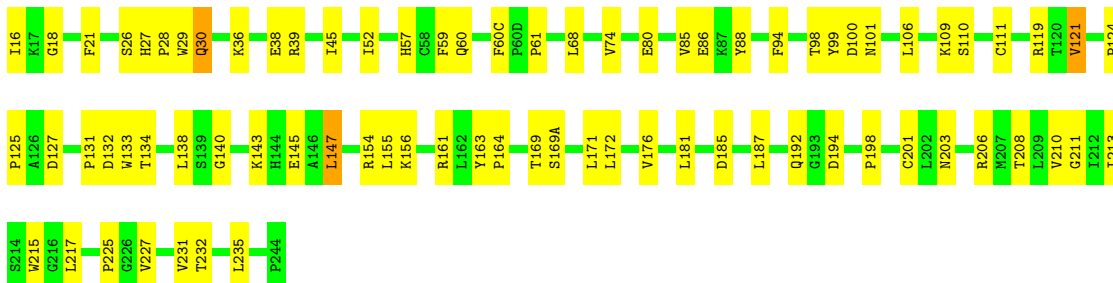
• Molecule 2: TISSUE PLASMINOGEN ACTIVATOR

Chain A: 



• Molecule 2: TISSUE PLASMINOGEN ACTIVATOR

Chain B: 



4 Data and refinement statistics

Xtriage (Phenix) and EDS were not executed - this section is therefore incomplete.

Property	Value	Source
Space group	C 1 2 1	Depositor
Cell constants a, b, c, α , β , γ	151.83Å 60.50Å 62.61Å 90.00° 110.50° 90.00°	Depositor
Resolution (Å)	7.00 – 2.90	Depositor
% Data completeness (in resolution range)	81.0 (7.00-2.90)	Depositor
R_{merge}	0.09	Depositor
R_{sym}	(Not available)	Depositor
Refinement program	X-PLOR 3.1	Depositor
R, R_{free}	0.178 , (Not available)	Depositor
Estimated twinning fraction	No twinning to report.	Xtriage
Total number of atoms	5341	wwPDB-VP
Average B, all atoms (Å ²)	14.0	wwPDB-VP

5 Model quality [i](#)

5.1 Standard geometry [i](#)

Bond lengths and bond angles in the following residue types are not validated in this section: BBA

The Z score for a bond length (or angle) is the number of standard deviations the observed value is removed from the expected value. A bond length (or angle) with $|Z| > 5$ is considered an outlier worth inspection. RMSZ is the root-mean-square of all Z scores of the bond lengths (or angles).

Mol	Chain	Bond lengths		Bond angles	
		RMSZ	$\# Z > 5$	RMSZ	$\# Z > 5$
1	C	0.41	0/58	0.61	0/75
1	D	0.41	0/58	0.58	0/75
2	A	0.37	0/2024	0.64	0/2745
2	B	0.36	0/2024	0.65	0/2745
All	All	0.37	0/4164	0.64	0/5640

There are no bond length outliers.

There are no bond angle outliers.

There are no chirality outliers.

There are no planarity outliers.

5.2 Too-close contacts [i](#)

In the following table, the Non-H and H(model) columns list the number of non-hydrogen atoms and hydrogen atoms in the chain respectively. The H(added) column lists the number of hydrogen atoms added and optimized by MolProbity. The Clashes column lists the number of clashes within the asymmetric unit, whereas Symm-Clashes lists symmetry related clashes.

Mol	Chain	Non-H	H(model)	H(added)	Clashes	Symm-Clashes
1	C	58	18	57	6	0
1	D	58	18	57	6	0
2	A	1975	447	1903	50	0
2	B	1975	447	1903	53	0
3	A	28	8	25	4	0
3	B	28	8	25	3	0
4	A	46	92	0	1	0
4	B	42	84	0	1	0
4	C	2	4	0	1	0

Continued on next page...

Continued from previous page...

Mol	Chain	Non-H	H(model)	H(added)	Clashes	Symm-Clashes
4	D	1	2	0	0	0
All	All	4213	1128	3970	107	0

The all-atom clashscore is defined as the number of clashes found per 1000 atoms (including hydrogen atoms). The all-atom clashscore for this structure is 14.

The worst 5 of 107 close contacts within the same asymmetric unit are listed below, sorted by their clash magnitude.

Atom-1	Atom-2	Interatomic distance (Å)	Clash overlap (Å)
2:A:88:TYR:HB3	2:A:106:LEU:HD13	1.67	0.76
2:A:110:SER:HB2	2:A:111:CYS:SG	2.28	0.72
2:B:29:TRP:CB	2:B:121:VAL:HG22	2.20	0.72
2:B:88:TYR:HB3	2:B:106:LEU:HD13	1.72	0.72
2:A:29:TRP:CB	2:A:121:VAL:HG22	2.23	0.69

There are no symmetry-related clashes.

5.3 Torsion angles [i](#)

5.3.1 Protein backbone [i](#)

In the following table, the Percentiles column shows the percent Ramachandran outliers of the chain as a percentile score with respect to all X-ray entries followed by that with respect to entries of similar resolution.

The Analysed column shows the number of residues for which the backbone conformation was analysed, and the total number of residues.

Mol	Chain	Analysed	Favoured	Allowed	Outliers	Percentiles	
1	C	5/7 (71%)	4 (80%)	1 (20%)	0	100	100
1	D	5/7 (71%)	5 (100%)	0	0	100	100
2	A	250/252 (99%)	230 (92%)	20 (8%)	0	100	100
2	B	250/252 (99%)	231 (92%)	19 (8%)	0	100	100
All	All	510/518 (98%)	470 (92%)	40 (8%)	0	100	100

There are no Ramachandran outliers to report.

5.3.2 Protein sidechains [i](#)

In the following table, the Percentiles column shows the percent sidechain outliers of the chain as a percentile score with respect to all X-ray entries followed by that with respect to entries of similar resolution.

The Analysed column shows the number of residues for which the sidechain conformation was analysed, and the total number of residues.

Mol	Chain	Analysed	Rotameric	Outliers	Percentiles	
1	C	6/6 (100%)	5 (83%)	1 (17%)	2	7
1	D	6/6 (100%)	6 (100%)	0	100	100
2	A	216/216 (100%)	205 (95%)	11 (5%)	26	60
2	B	216/216 (100%)	208 (96%)	8 (4%)	37	72
All	All	444/444 (100%)	424 (96%)	20 (4%)	30	64

5 of 20 residues with a non-rotameric sidechain are listed below:

Mol	Chain	Res	Type
2	A	169	THR
2	A	169(A)	SER
2	B	138	LEU
2	A	138	LEU
2	A	147	LEU

Some sidechains can be flipped to improve hydrogen bonding and reduce clashes. All (2) such sidechains are listed below:

Mol	Chain	Res	Type
2	A	107	GLN
2	B	107	GLN

5.3.3 RNA [i](#)

There are no RNA molecules in this entry.

5.4 Non-standard residues in protein, DNA, RNA chains [i](#)

There are no non-standard protein/DNA/RNA residues in this entry.

5.5 Carbohydrates [i](#)

There are no carbohydrates in this entry.

5.6 Ligand geometry [i](#)

2 ligands are modelled in this entry.

In the following table, the Counts columns list the number of bonds (or angles) for which Mogul statistics could be retrieved, the number of bonds (or angles) that are observed in the model and the number of bonds (or angles) that are defined in the Chemical Component Dictionary. The Link column lists molecule types, if any, to which the group is linked. The Z score for a bond length (or angle) is the number of standard deviations the observed value is removed from the expected value. A bond length (or angle) with $|Z| > 2$ is considered an outlier worth inspection. RMSZ is the root-mean-square of all Z scores of the bond lengths (or angles).

Mol	Type	Chain	Res	Link	Bond lengths			Bond angles		
					Counts	RMSZ	$\# Z > 2$	Counts	RMSZ	$\# Z > 2$
3	BBA	A	250	-	28,30,30	2.12	8 (28%)	30,41,41	2.35	4 (13%)
3	BBA	B	250	-	28,30,30	2.12	6 (21%)	30,41,41	2.44	5 (16%)

In the following table, the Chirals column lists the number of chiral outliers, the number of chiral centers analysed, the number of these observed in the model and the number defined in the Chemical Component Dictionary. Similar counts are reported in the Torsion and Rings columns. '-' means no outliers of that kind were identified.

Mol	Type	Chain	Res	Link	Chirals	Torsions	Rings
3	BBA	A	250	-	-	0/16/31/31	1/3/3/3
3	BBA	B	250	-	-	0/16/31/31	1/3/3/3

The worst 5 of 14 bond length outliers are listed below:

Mol	Chain	Res	Type	Atoms	Z	Observed(Å)	Ideal(Å)
3	B	250	BBA	C8-C1	-6.21	1.35	1.53
3	A	250	BBA	C8-C1	-6.05	1.35	1.53
3	B	250	BBA	C18-C5	-5.81	1.36	1.53
3	A	250	BBA	C18-C5	-5.17	1.38	1.53
3	A	250	BBA	C24-C19	2.05	1.43	1.38

The worst 5 of 9 bond angle outliers are listed below:

Mol	Chain	Res	Type	Atoms	Z	Observed(°)	Ideal(°)
3	A	250	BBA	C12-C15-N16	2.48	121.87	118.08
3	B	250	BBA	C22-C25-N26	2.63	122.10	118.08

Continued on next page...

Continued from previous page...

Mol	Chain	Res	Type	Atoms	Z	Observed(°)	Ideal(°)
3	B	250	BBA	C12-C15-N16	2.64	122.12	118.08
3	B	250	BBA	C2-C1-C6	2.94	118.46	110.03
3	A	250	BBA	C2-C1-C6	2.96	118.50	110.03

There are no chirality outliers.

There are no torsion outliers.

All (2) ring outliers are listed below:

Mol	Chain	Res	Type	Atoms
3	A	250	BBA	C-C1-C2-C3-C4-C5-C6
3	B	250	BBA	C-C1-C2-C3-C4-C5-C6

2 monomers are involved in 7 short contacts:

Mol	Chain	Res	Type	Clashes	Symm-Clashes
3	A	250	BBA	4	0
3	B	250	BBA	3	0

5.7 Other polymers [i](#)

There are no such residues in this entry.

5.8 Polymer linkage issues [i](#)

There are no chain breaks in this entry.

6 Fit of model and data [i](#)

6.1 Protein, DNA and RNA chains [i](#)

EDS was not executed - this section is therefore empty.

6.2 Non-standard residues in protein, DNA, RNA chains [i](#)

EDS was not executed - this section is therefore empty.

6.3 Carbohydrates [i](#)

EDS was not executed - this section is therefore empty.

6.4 Ligands [i](#)

EDS was not executed - this section is therefore empty.

6.5 Other polymers [i](#)

EDS was not executed - this section is therefore empty.