



Full wwPDB X-ray Structure Validation Report ⓘ

Mar 9, 2018 – 06:14 am GMT

PDB ID : 2A7P
Title : Crystal Structure of the G81A mutant of the Active Chimera of (S)-Mandelate Dehydrogenase in complex with its substrate 3-indolelactate
Authors : Sukumar, N.; Xu, Y.; Mitra, B.; Mathews, F.S.
Deposited on : 2005-07-05
Resolution : 2.20 Å(reported)

This is a Full wwPDB X-ray Structure Validation Report for a publicly released PDB entry.

We welcome your comments at validation@mail.wwpdb.org

A user guide is available at

<https://www.wwpdb.org/validation/2017/XrayValidationReportHelp>

with specific help available everywhere you see the ⓘ symbol.

The following versions of software and data (see [references ⓘ](#)) were used in the production of this report:

MolProbity : 4.02b-467
Mogul : 1.7.3 (157068), CSD as539be (2018)
Xtriage (Phenix) : 1.13
EDS : trunk30967
Percentile statistics : 20171227.v01 (using entries in the PDB archive December 27th 2017)
Refmac : 5.8.0158
CCP4 : 7.0 (Gargrove)
Ideal geometry (proteins) : Engh & Huber (2001)
Ideal geometry (DNA, RNA) : Parkinson et al. (1996)
Validation Pipeline (wwPDB-VP) : trunk30967

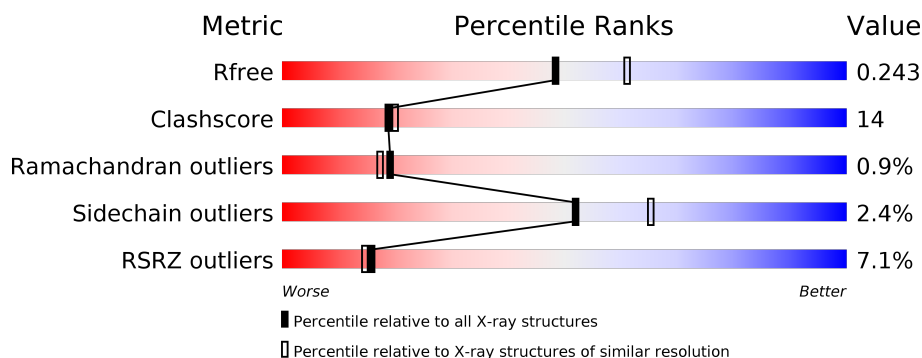
1 Overall quality at a glance

The following experimental techniques were used to determine the structure:

X-RAY DIFFRACTION

The reported resolution of this entry is 2.20 Å.

Percentile scores (ranging between 0-100) for global validation metrics of the entry are shown in the following graphic. The table shows the number of entries on which the scores are based.



Metric	Whole archive (#Entries)	Similar resolution (#Entries, resolution range(Å))
R_{free}	111664	4343 (2.20-2.20)
Clashscore	122126	5027 (2.20-2.20)
Ramachandran outliers	120053	4952 (2.20-2.20)
Sidechain outliers	120020	4953 (2.20-2.20)
RSRZ outliers	108989	4245 (2.20-2.20)

The table below summarises the geometric issues observed across the polymeric chains and their fit to the electron density. The red, orange, yellow and green segments on the lower bar indicate the fraction of residues that contain outliers for ≥ 3 , 2, 1 and 0 types of geometric quality criteria. A grey segment represents the fraction of residues that are not modelled. The numeric value for each fraction is indicated below the corresponding segment, with a dot representing fractions $\leq 5\%$. The upper red bar (where present) indicates the fraction of residues that have poor fit to the electron density. The numeric value is given above the bar.

Mol	Chain	Length	Quality of chain
1	A	380	<div> <div>7%</div> <div>73%</div> <div>18%</div> <div>• 7%</div> </div>

2 Entry composition [i](#)

There are 5 unique types of molecules in this entry. The entry contains 3030 atoms, of which 0 are hydrogens and 0 are deuteriums.

In the tables below, the ZeroOcc column contains the number of atoms modelled with zero occupancy, the AltConf column contains the number of residues with at least one atom in alternate conformation and the Trace column contains the number of residues modelled with at most 2 atoms.

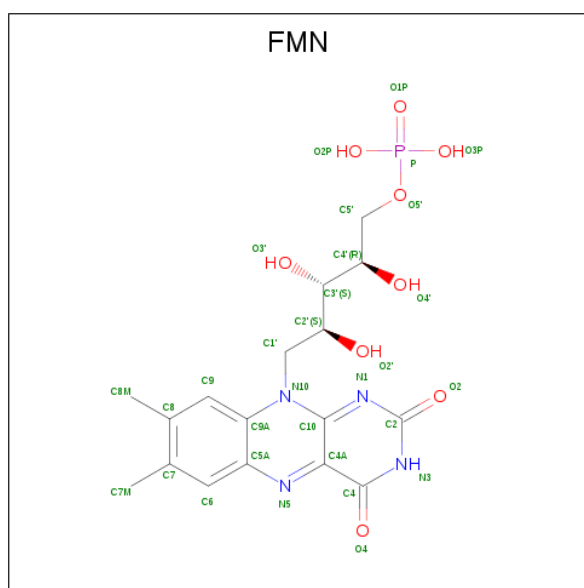
- Molecule 1 is a protein called (S)-Mandelate Dehydrogenase.

Mol	Chain	Residues	Atoms					ZeroOcc	AltConf	Trace
1	A	353	Total	C	N	O	S	10	0	0
			2748	1740	488	507	13			

There are 7 discrepancies between the modelled and reference sequences:

Chain	Residue	Modelled	Actual	Comment	Reference
A	81	ALA	GLY	ENGINEERED	UNP P20932
A	375	HIS	-	EXPRESSION TAG	UNP P20932
A	376	HIS	-	EXPRESSION TAG	UNP P20932
A	377	HIS	-	EXPRESSION TAG	UNP P20932
A	378	HIS	-	EXPRESSION TAG	UNP P20932
A	379	HIS	-	EXPRESSION TAG	UNP P20932
A	380	HIS	-	EXPRESSION TAG	UNP P20932

- Molecule 2 is FLAVIN MONONUCLEOTIDE (three-letter code: FMN) (formula: $C_{17}H_{21}N_4O_9P$).



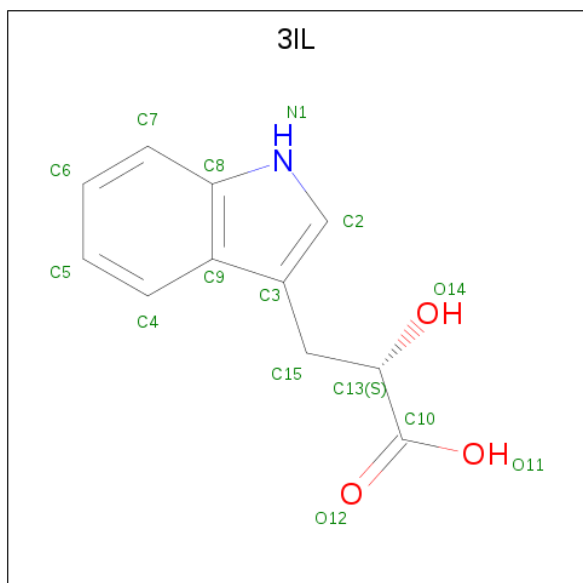
Mol	Chain	Residues	Atoms					ZeroOcc	AltConf
2	A	1	Total	C	N	O	P	0	0
			31	17	4	9	1		

- Molecule 3 is 2-(N-MORPHOLINO)-ETHANESULFONIC ACID (three-letter code: MES) (formula: $C_6H_{13}NO_4S$).



Mol	Chain	Residues	Atoms					ZeroOcc	AltConf
3	A	1	Total	C	N	O	S	0	0
			12	6	1	4	1		

- Molecule 4 is 3-(INDOL-3-YL) LACTATE (three-letter code: 3IL) (formula: $C_{11}H_{11}NO_3$).



Mol	Chain	Residues	Atoms				ZeroOcc	AltConf
4	A	1	Total	C	N	O	0	0
			15	11	1	3		

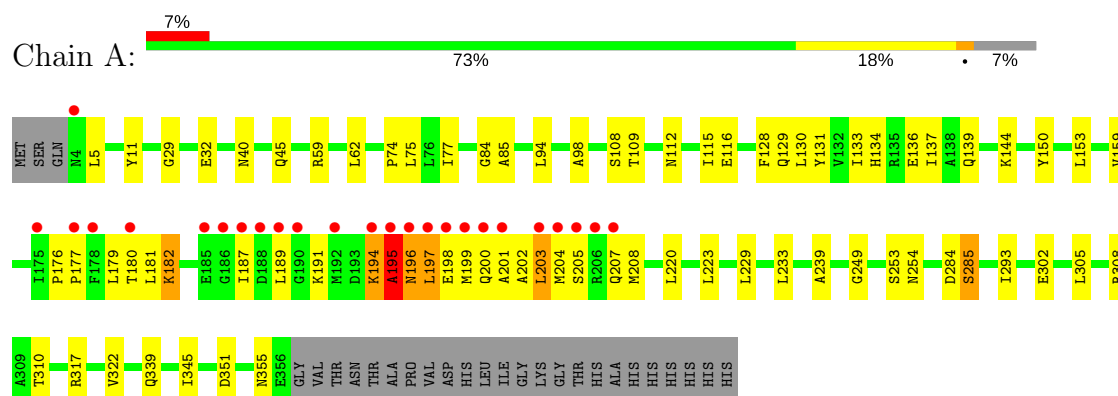
- Molecule 5 is water.

Mol	Chain	Residues	Atoms		ZeroOcc	AltConf
5	A	224	Total	O	0	0
			224	224		

3 Residue-property plots

These plots are drawn for all protein, RNA and DNA chains in the entry. The first graphic for a chain summarises the proportions of the various outlier classes displayed in the second graphic. The second graphic shows the sequence view annotated by issues in geometry and electron density. Residues are color-coded according to the number of geometric quality criteria for which they contain at least one outlier: green = 0, yellow = 1, orange = 2 and red = 3 or more. A red dot above a residue indicates a poor fit to the electron density ($RSRZ > 2$). Stretches of 2 or more consecutive residues without any outlier are shown as a green connector. Residues present in the sample, but not in the model, are shown in grey.

• Molecule 1: (S)-Mandelate Dehydrogenase



4 Data and refinement statistics

Property	Value	Source
Space group	I 4	Depositor
Cell constants a, b, c, α , β , γ	99.40 Å 99.40 Å 87.60 Å 90.00° 90.00° 90.00°	Depositor
Resolution (Å)	40.00 – 2.20 31.43 – 2.05	Depositor EDS
% Data completeness (in resolution range)	(Not available) (40.00-2.20) 79.4 (31.43-2.05)	Depositor EDS
R_{merge}	0.08	Depositor
R_{sym}	(Not available)	Depositor
$\langle I/\sigma(I) \rangle$ ¹	1.06 (at 2.05 Å)	Xtriage
Refinement program	CNS	Depositor
R, R_{free}	0.198 , 0.243 0.198 , 0.243	Depositor DCC
R_{free} test set	1360 reflections (5.84%)	wwPDB-VP
Wilson B-factor (Å ²)	17.8	Xtriage
Anisotropy	0.321	Xtriage
Bulk solvent k_{sol} (e/Å ³), B_{sol} (Å ²)	0.34 , 48.5	EDS
L-test for twinning ²	$\langle L \rangle = 0.49$, $\langle L^2 \rangle = 0.32$	Xtriage
Estimated twinning fraction	0.039 for -k,-h,-l	Xtriage
F_o, F_c correlation	0.92	EDS
Total number of atoms	3030	wwPDB-VP
Average B, all atoms (Å ²)	30.0	wwPDB-VP

Xtriage's analysis on translational NCS is as follows: *The largest off-origin peak in the Patterson function is 4.90% of the height of the origin peak. No significant pseudotranslation is detected.*

¹Intensities estimated from amplitudes.

²Theoretical values of $\langle |L| \rangle$, $\langle L^2 \rangle$ for acentric reflections are 0.5, 0.333 respectively for untwinned datasets, and 0.375, 0.2 for perfectly twinned datasets.

5 Model quality [i](#)

5.1 Standard geometry [i](#)

Bond lengths and bond angles in the following residue types are not validated in this section: FMN, MES, 3IL

The Z score for a bond length (or angle) is the number of standard deviations the observed value is removed from the expected value. A bond length (or angle) with $|Z| > 5$ is considered an outlier worth inspection. RMSZ is the root-mean-square of all Z scores of the bond lengths (or angles).

Mol	Chain	Bond lengths		Bond angles	
		RMSZ	$\# Z > 5$	RMSZ	$\# Z > 5$
1	A	0.47	2/2797 (0.1%)	0.71	3/3784 (0.1%)

All (2) bond length outliers are listed below:

Mol	Chain	Res	Type	Atoms	Z	Observed(Å)	Ideal(Å)
1	A	181	LEU	C-N	-7.18	1.17	1.34
1	A	195	ALA	C-N	-5.95	1.20	1.34

All (3) bond angle outliers are listed below:

Mol	Chain	Res	Type	Atoms	Z	Observed(°)	Ideal(°)
1	A	196	ASN	O-C-N	-12.51	102.68	122.70
1	A	196	ASN	CA-C-N	7.34	133.36	117.20
1	A	203	LEU	CA-CB-CG	6.78	130.88	115.30

There are no chirality outliers.

There are no planarity outliers.

5.2 Too-close contacts [i](#)

In the following table, the Non-H and H(model) columns list the number of non-hydrogen atoms and hydrogen atoms in the chain respectively. The H(added) column lists the number of hydrogen atoms added and optimized by MolProbity. The Clashes column lists the number of clashes within the asymmetric unit, whereas Symm-Clashes lists symmetry related clashes.

Mol	Chain	Non-H	H(model)	H(added)	Clashes	Symm-Clashes
1	A	2748	0	2781	79	0
2	A	31	0	19	2	0
3	A	12	0	13	0	0

Continued on next page...

Continued from previous page...

Mol	Chain	Non-H	H(model)	H(added)	Clashes	Symm-Clashes
4	A	15	0	10	0	0
5	A	224	0	0	5	0
All	All	3030	0	2823	79	0

The all-atom clashscore is defined as the number of clashes found per 1000 atoms (including hydrogen atoms). The all-atom clashscore for this structure is 14.

All (79) close contacts within the same asymmetric unit are listed below, sorted by their clash magnitude.

Atom-1	Atom-2	Interatomic distance (Å)	Clash overlap (Å)
1:A:191:LYS:HB2	1:A:196:ASN:HB3	1.35	1.07
1:A:195:ALA:O	1:A:196:ASN:HB2	1.73	0.86
1:A:84:GLY:H	1:A:112:ASN:HD22	1.24	0.86
1:A:40:ASN:HD21	1:A:254:ASN:HD21	1.23	0.84
1:A:180:THR:HG23	1:A:182:LYS:HG2	1.60	0.83
1:A:355:ASN:HB3	5:A:1067:HOH:O	1.78	0.83
1:A:189:LEU:HD12	1:A:200:GLN:HG2	1.63	0.81
1:A:191:LYS:HB2	1:A:196:ASN:CB	2.12	0.80
1:A:137:ILE:CD1	1:A:203:LEU:HD21	2.14	0.77
1:A:355:ASN:CB	5:A:1067:HOH:O	2.35	0.74
1:A:137:ILE:HD11	1:A:203:LEU:HD21	1.68	0.74
1:A:112:ASN:O	1:A:182:LYS:HG3	1.90	0.71
1:A:200:GLN:HA	1:A:203:LEU:HD12	1.73	0.70
1:A:133:ILE:HG22	1:A:202:ALA:HB1	1.74	0.70
1:A:199:MET:O	1:A:203:LEU:HG	1.95	0.65
1:A:40:ASN:ND2	1:A:254:ASN:HD21	1.94	0.64
1:A:137:ILE:CD1	1:A:203:LEU:CD2	2.74	0.64
1:A:284:ASP:O	1:A:285:SER:HB2	1.97	0.64
1:A:84:GLY:N	1:A:112:ASN:HD22	1.95	0.62
1:A:180:THR:CG2	1:A:182:LYS:HG2	2.30	0.61
1:A:134:HIS:CD2	1:A:136:GLU:HB3	2.38	0.59
1:A:116:GLU:CD	1:A:116:GLU:H	2.06	0.58
1:A:176:PRO:HG2	1:A:179:LEU:HD12	1.85	0.58
1:A:189:LEU:CD1	1:A:200:GLN:HG2	2.30	0.58
1:A:84:GLY:H	1:A:112:ASN:ND2	1.97	0.58
1:A:75:LEU:HD21	1:A:293:ILE:HD13	1.87	0.56
1:A:137:ILE:HD13	1:A:203:LEU:CD2	2.34	0.56
1:A:45:GLN:NE2	5:A:1111:HOH:O	2.39	0.55
1:A:253:SER:HB2	1:A:284:ASP:OD1	2.05	0.55
1:A:133:ILE:N	1:A:133:ILE:HD12	2.22	0.54
1:A:116:GLU:HG2	1:A:144:LYS:HE3	1.90	0.53

Continued on next page...

Continued from previous page...

Atom-1	Atom-2	Interatomic distance (Å)	Clash overlap (Å)
1:A:194:LYS:C	1:A:195:ALA:O	2.44	0.53
1:A:191:LYS:HG3	1:A:196:ASN:CG	2.28	0.53
1:A:205:SER:C	1:A:207:GLN:H	2.12	0.53
1:A:5:LEU:HB3	1:A:11:TYR:CE1	2.44	0.53
1:A:129:GLN:NE2	2:A:390:FMN:HN3	2.07	0.53
1:A:40:ASN:HD21	1:A:254:ASN:ND2	2.01	0.53
1:A:191:LYS:CB	1:A:196:ASN:HB3	2.24	0.52
1:A:189:LEU:HD12	1:A:200:GLN:CG	2.38	0.51
1:A:108:SER:HA	1:A:129:GLN:HE21	1.76	0.51
1:A:191:LYS:CB	1:A:196:ASN:CB	2.87	0.51
1:A:137:ILE:HD13	1:A:203:LEU:HD21	1.89	0.51
1:A:139:GLN:HG3	1:A:223:LEU:CD2	2.41	0.50
1:A:284:ASP:C	1:A:284:ASP:OD1	2.50	0.50
1:A:32:GLU:HG3	5:A:933:HOH:O	2.10	0.50
1:A:198:GLU:O	1:A:201:ALA:HB3	2.12	0.49
1:A:109:THR:OG1	1:A:130:LEU:HA	2.12	0.49
1:A:284:ASP:O	1:A:285:SER:CB	2.61	0.49
1:A:317:ARG:HH11	1:A:317:ARG:HG2	1.79	0.48
1:A:74:PRO:HG2	1:A:345:ILE:HD13	1.93	0.48
1:A:116:GLU:HG2	1:A:144:LYS:CE	2.44	0.48
1:A:194:LYS:O	1:A:197:LEU:HB2	2.13	0.48
1:A:194:LYS:O	1:A:195:ALA:O	2.32	0.47
1:A:195:ALA:O	1:A:196:ASN:CB	2.39	0.47
1:A:139:GLN:HG3	1:A:223:LEU:HD21	1.96	0.47
1:A:187:ILE:HG22	1:A:199:MET:HE3	1.97	0.47
1:A:187:ILE:HG21	1:A:203:LEU:HD21	1.98	0.46
1:A:115:ILE:HG23	1:A:150:TYR:CE1	2.51	0.46
1:A:85:ALA:HA	1:A:179:LEU:HD11	1.99	0.45
1:A:308:ARG:HG3	2:A:390:FMN:O2P	2.16	0.45
1:A:253:SER:CB	1:A:284:ASP:OD1	2.65	0.45
1:A:134:HIS:HD2	1:A:137:ILE:HG13	1.81	0.45
1:A:62:LEU:HD12	1:A:62:LEU:N	2.32	0.44
1:A:116:GLU:CG	1:A:144:LYS:HE3	2.48	0.43
1:A:115:ILE:HD11	1:A:128:PHE:CZ	2.54	0.43
1:A:191:LYS:CB	1:A:196:ASN:CG	2.88	0.42
1:A:77:ILE:HD12	1:A:98:ALA:HB2	2.01	0.42
1:A:200:GLN:HB3	1:A:204:MET:CE	2.50	0.42
1:A:153:LEU:HD21	1:A:220:LEU:HD11	2.01	0.42
1:A:159:VAL:O	1:A:159:VAL:HG12	2.20	0.42
1:A:229:LEU:HD22	1:A:249:GLY:C	2.41	0.41
1:A:284:ASP:HB3	1:A:305:LEU:HB2	2.03	0.41

Continued on next page...

Continued from previous page...

Atom-1	Atom-2	Interatomic distance (Å)	Clash overlap (Å)
1:A:59:ARG:HH11	1:A:59:ARG:HG3	1.84	0.41
1:A:195:ALA:C	1:A:197:LEU:N	2.74	0.41
1:A:233:LEU:HD13	1:A:239:ALA:HA	2.03	0.41
1:A:182:LYS:HE2	1:A:182:LYS:HB3	1.33	0.41
1:A:29:GLY:HA3	5:A:977:HOH:O	2.20	0.41
1:A:94:LEU:HD23	1:A:322:VAL:HG21	2.03	0.41
1:A:131:TYR:HB3	1:A:208:MET:SD	2.60	0.40

There are no symmetry-related clashes.

5.3 Torsion angles [i](#)

5.3.1 Protein backbone [i](#)

In the following table, the Percentiles column shows the percent Ramachandran outliers of the chain as a percentile score with respect to all X-ray entries followed by that with respect to entries of similar resolution.

The Analysed column shows the number of residues for which the backbone conformation was analysed, and the total number of residues.

Mol	Chain	Analysed	Favoured	Allowed	Outliers	Percentiles
1	A	351/380 (92%)	331 (94%)	17 (5%)	3 (1%)	19 17

All (3) Ramachandran outliers are listed below:

Mol	Chain	Res	Type
1	A	194	LYS
1	A	195	ALA
1	A	285	SER

5.3.2 Protein sidechains [i](#)

In the following table, the Percentiles column shows the percent sidechain outliers of the chain as a percentile score with respect to all X-ray entries followed by that with respect to entries of similar resolution.

The Analysed column shows the number of residues for which the sidechain conformation was analysed, and the total number of residues.

Mol	Chain	Analysed	Rotameric	Outliers	Percentiles
1	A	288/311 (93%)	281 (98%)	7 (2%)	52 65

All (7) residues with a non-rotameric sidechain are listed below:

Mol	Chain	Res	Type
1	A	177	PRO
1	A	182	LYS
1	A	197	LEU
1	A	302	GLU
1	A	310	THR
1	A	339	GLN
1	A	351	ASP

Some sidechains can be flipped to improve hydrogen bonding and reduce clashes. All (12) such sidechains are listed below:

Mol	Chain	Res	Type
1	A	16	GLN
1	A	40	ASN
1	A	46	GLN
1	A	83	ASN
1	A	112	ASN
1	A	129	GLN
1	A	134	HIS
1	A	162	ASN
1	A	200	GLN
1	A	259	GLN
1	A	272	GLN
1	A	339	GLN

5.3.3 RNA ⓘ

There are no RNA molecules in this entry.

5.4 Non-standard residues in protein, DNA, RNA chains ⓘ

There are no non-standard protein/DNA/RNA residues in this entry.

5.5 Carbohydrates ⓘ

There are no carbohydrates in this entry.

5.6 Ligand geometry

3 ligands are modelled in this entry.

In the following table, the Counts columns list the number of bonds (or angles) for which Mogul statistics could be retrieved, the number of bonds (or angles) that are observed in the model and the number of bonds (or angles) that are defined in the Chemical Component Dictionary. The Link column lists molecule types, if any, to which the group is linked. The Z score for a bond length (or angle) is the number of standard deviations the observed value is removed from the expected value. A bond length (or angle) with $|Z| > 2$ is considered an outlier worth inspection. RMSZ is the root-mean-square of all Z scores of the bond lengths (or angles).

Mol	Type	Chain	Res	Link	Bond lengths			Bond angles		
					Counts	RMSZ	# Z > 2	Counts	RMSZ	# Z > 2
2	FMN	A	390	-	31,33,33	3.46	14 (45%)	39,50,50	3.23	11 (28%)
4	3IL	A	410	-	12,16,16	1.80	5 (41%)	14,22,22	1.51	2 (14%)
3	MES	A	890	-	12,12,12	2.84	4 (33%)	14,16,16	1.17	1 (7%)

In the following table, the Chirals column lists the number of chiral outliers, the number of chiral centers analysed, the number of these observed in the model and the number defined in the Chemical Component Dictionary. Similar counts are reported in the Torsion and Rings columns. '-' means no outliers of that kind were identified.

Mol	Type	Chain	Res	Link	Chirals	Torsions	Rings
2	FMN	A	390	-	-	0/16/18/18	0/3/3/3
4	3IL	A	410	-	-	0/3/8/8	0/2/2/2
3	MES	A	890	-	-	0/6/14/14	0/1/1/1

All (23) bond length outliers are listed below:

Mol	Chain	Res	Type	Atoms	Z	Observed(Å)	Ideal(Å)
2	A	390	FMN	O2'-C2'	-2.88	1.37	1.43
4	A	410	3IL	C15-C13	2.08	1.56	1.53
2	A	390	FMN	O3'-C3'	2.15	1.48	1.43
4	A	410	3IL	C6-C5	2.19	1.43	1.38
2	A	390	FMN	C9-C8	2.31	1.43	1.37
4	A	410	3IL	C2-N1	2.50	1.41	1.36
3	A	890	MES	O3S-S	2.52	1.56	1.47
3	A	890	MES	C5-N4	2.56	1.53	1.46
4	A	410	3IL	C6-C7	2.69	1.42	1.36
4	A	410	3IL	C5-C4	2.69	1.42	1.36
2	A	390	FMN	C6-C5A	2.72	1.46	1.41
2	A	390	FMN	C6-C7	3.63	1.47	1.37
2	A	390	FMN	C5A-N5	3.86	1.41	1.35
2	A	390	FMN	C9-C9A	3.89	1.48	1.40

Continued on next page...

Continued from previous page...

Mol	Chain	Res	Type	Atoms	Z	Observed(Å)	Ideal(Å)
3	A	890	MES	O2S-S	4.09	1.57	1.45
2	A	390	FMN	C2-N3	4.71	1.47	1.38
2	A	390	FMN	C9A-C5A	5.29	1.53	1.42
2	A	390	FMN	C8-C7	5.55	1.54	1.40
2	A	390	FMN	C4-C4A	5.76	1.51	1.41
2	A	390	FMN	C4-N3	5.83	1.43	1.33
3	A	890	MES	O1S-S	7.57	1.67	1.45
2	A	390	FMN	C4A-C10	8.12	1.54	1.41
2	A	390	FMN	C9A-N10	8.63	1.49	1.38

All (14) bond angle outliers are listed below:

Mol	Chain	Res	Type	Atoms	Z	Observed(°)	Ideal(°)
2	A	390	FMN	C4-C4A-C10	-7.18	114.58	119.95
2	A	390	FMN	C4A-C10-N10	-6.69	114.18	120.40
2	A	390	FMN	C4A-C4-N3	-5.36	115.84	123.47
2	A	390	FMN	C5A-C9A-N10	-3.63	114.94	117.71
4	A	410	3IL	C15-C3-C2	-3.23	123.98	127.97
2	A	390	FMN	O3'-C3'-C4'	-2.38	102.96	108.82
2	A	390	FMN	O4'-C4'-C3'	2.06	114.19	109.10
3	A	890	MES	O2S-S-C8	2.24	109.61	106.92
2	A	390	FMN	C10-C4A-N5	2.51	123.48	120.59
2	A	390	FMN	C4-C4A-N5	2.74	121.79	118.70
4	A	410	3IL	C15-C3-C9	2.88	130.72	126.25
2	A	390	FMN	P-O5'-C5'	4.76	131.42	118.30
2	A	390	FMN	C4A-N5-C5A	5.22	122.23	116.76
2	A	390	FMN	C4-N3-C2	12.60	125.87	115.14

There are no chirality outliers.

There are no torsion outliers.

There are no ring outliers.

1 monomer is involved in 2 short contacts:

Mol	Chain	Res	Type	Clashes	Symm-Clashes
2	A	390	FMN	2	0

5.7 Other polymers ⓘ

There are no such residues in this entry.

5.8 Polymer linkage issues

The following chains have linkage breaks:

Mol	Chain	Number of breaks
1	A	2

All chain breaks are listed below:

Model	Chain	Residue-1	Atom-1	Residue-2	Atom-2	Distance (Å)
1	A	195:ALA	C	196:ASN	N	1.20
1	A	181:LEU	C	182:LYS	N	1.17

6 Fit of model and data

6.1 Protein, DNA and RNA chains

In the following table, the column labelled ‘#RSRZ> 2’ contains the number (and percentage) of RSRZ outliers, followed by percent RSRZ outliers for the chain as percentile scores relative to all X-ray entries and entries of similar resolution. The OWAB column contains the minimum, median, 95th percentile and maximum values of the occupancy-weighted average B-factor per residue. The column labelled ‘Q< 0.9’ lists the number of (and percentage) of residues with an average occupancy less than 0.9.

Mol	Chain	Analysed	<RSRZ>	#RSRZ>2	OWAB(Å ²)	Q<0.9
1	A	353/380 (92%)	0.15	25 (7%) 16 15	11, 24, 82, 91	2 (0%)

All (25) RSRZ outliers are listed below:

Mol	Chain	Res	Type	RSRZ
1	A	187	ILE	8.2
1	A	189	LEU	7.1
1	A	177	PRO	6.9
1	A	196	ASN	6.6
1	A	192	MET	6.6
1	A	190	GLY	5.9
1	A	199	MET	5.7
1	A	198	GLU	5.6
1	A	186	GLY	5.5
1	A	204	MET	5.5
1	A	205	SER	5.4
1	A	197	LEU	5.1
1	A	188	ASP	4.3
1	A	201	ALA	4.2
1	A	200	GLN	3.6
1	A	178	PHE	3.5
1	A	175	ILE	3.3
1	A	195	ALA	3.3
1	A	203	LEU	3.0
1	A	194	LYS	2.9
1	A	4	ASN	2.8
1	A	185	GLU	2.6
1	A	206	ARG	2.3
1	A	207	GLN	2.2
1	A	180	THR	2.2

6.2 Non-standard residues in protein, DNA, RNA chains [i](#)

There are no non-standard protein/DNA/RNA residues in this entry.

6.3 Carbohydrates [i](#)

There are no carbohydrates in this entry.

6.4 Ligands [i](#)

In the following table, the Atoms column lists the number of modelled atoms in the group and the number defined in the chemical component dictionary. The B-factors column lists the minimum, median, 95th percentile and maximum values of B factors of atoms in the group. The column labelled 'Q< 0.9' lists the number of atoms with occupancy less than 0.9.

Mol	Type	Chain	Res	Atoms	RSCC	RSR	B-factors(\AA^2)	Q<0.9
4	3IL	A	410	15/15	0.76	0.19	35,40,42,42	0
3	MES	A	890	12/12	0.96	0.10	21,23,25,26	0
2	FMN	A	390	31/31	0.96	0.17	10,15,18,20	0

6.5 Other polymers [i](#)

There are no such residues in this entry.