



Full wwPDB X-ray Structure Validation Report ⓘ

Mar 8, 2018 – 11:40 pm GMT

PDB ID : 2A9C
Title : Crystal structure of R138Q mutant of recombinant chicken sulfite oxidase with the bound product, sulfate, at the active site
Authors : Karakas, E.; Wilson, H.L.; Graf, T.N.; Xiang, S.; Jaramillo-Busquets, S.; Rajagopalan, K.V.; Kisker, C.
Deposited on : 2005-07-11
Resolution : 2.50 Å(reported)

This is a Full wwPDB X-ray Structure Validation Report for a publicly released PDB entry.

We welcome your comments at validation@mail.wwpdb.org

A user guide is available at

<https://www.wwpdb.org/validation/2017/XrayValidationReportHelp>

with specific help available everywhere you see the ⓘ symbol.

The following versions of software and data (see [references ⓘ](#)) were used in the production of this report:

MolProbity : 4.02b-467
Mogul : 1.7.3 (157068), CSD as539be (2018)
Xtriage (Phenix) : 1.13
EDS : trunk30967
Percentile statistics : 20171227.v01 (using entries in the PDB archive December 27th 2017)
Refmac : 5.8.0158
CCP4 : 7.0 (Gargrove)
Ideal geometry (proteins) : Engh & Huber (2001)
Ideal geometry (DNA, RNA) : Parkinson et al. (1996)
Validation Pipeline (wwPDB-VP) : trunk30967

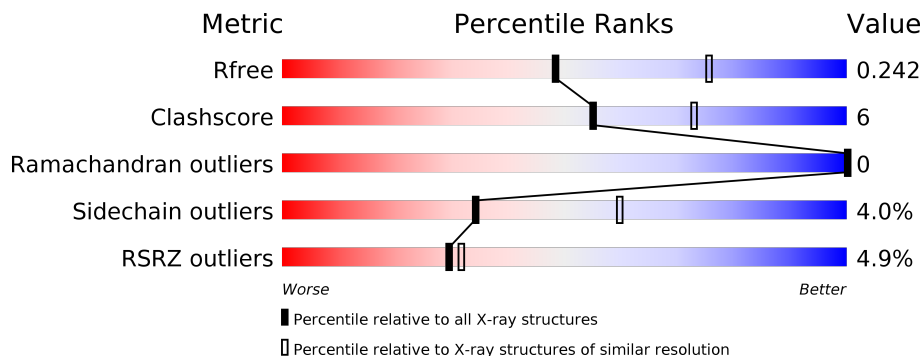
1 Overall quality at a glance

The following experimental techniques were used to determine the structure:

X-RAY DIFFRACTION

The reported resolution of this entry is 2.50 Å.

Percentile scores (ranging between 0-100) for global validation metrics of the entry are shown in the following graphic. The table shows the number of entries on which the scores are based.



Metric	Whole archive (#Entries)	Similar resolution (#Entries, resolution range(Å))
R_{free}	111664	4155 (2.50-2.50)
Clashscore	122126	4827 (2.50-2.50)
Ramachandran outliers	120053	4735 (2.50-2.50)
Sidechain outliers	120020	4737 (2.50-2.50)
RSRZ outliers	108989	4058 (2.50-2.50)

The table below summarises the geometric issues observed across the polymeric chains and their fit to the electron density. The red, orange, yellow and green segments on the lower bar indicate the fraction of residues that contain outliers for ≥ 3 , 2, 1 and 0 types of geometric quality criteria. A grey segment represents the fraction of residues that are not modelled. The numeric value for each fraction is indicated below the corresponding segment, with a dot representing fractions $\leq 5\%$. The upper red bar (where present) indicates the fraction of residues that have poor fit to the electron density. The numeric value is given above the bar.

Mol	Chain	Length	Quality of chain
1	A	372	<div> <div>4%</div> <div> <div></div> <div>81%</div> <div>13%</div> <div>• •</div> </div> </div>
1	B	372	<div> <div>5%</div> <div> <div></div> <div>87%</div> <div>9%</div> <div>• •</div> </div> </div>

2 Entry composition [i](#)

There are 6 unique types of molecules in this entry. The entry contains 6142 atoms, of which 0 are hydrogens and 0 are deuteriums.

In the tables below, the ZeroOcc column contains the number of atoms modelled with zero occupancy, the AltConf column contains the number of residues with at least one atom in alternate conformation and the Trace column contains the number of residues modelled with at most 2 atoms.

- Molecule 1 is a protein called Sulfite Oxidase.

Mol	Chain	Residues	Atoms					ZeroOcc	AltConf	Trace
1	A	359	Total	C	N	O	S	0	0	0
			2772	1756	502	507	7			
1	B	359	Total	C	N	O	S	0	0	0
			2772	1756	502	507	7			

There are 2 discrepancies between the modelled and reference sequences:

Chain	Residue	Modelled	Actual	Comment	Reference
A	138	GLN	ARG	ENGINEERED	UNP P07850
B	138	GLN	ARG	ENGINEERED	UNP P07850

- Molecule 2 is SULFATE ION (three-letter code: SO4) (formula: O₄S).



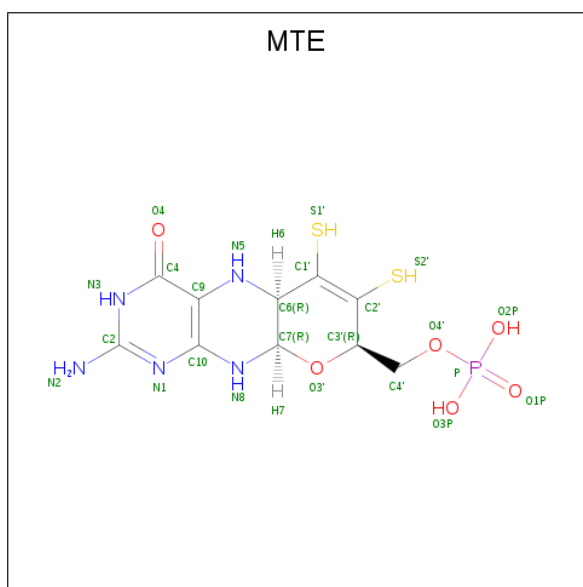
Mol	Chain	Residues	Atoms			ZeroOcc	AltConf
2	A	1	Total	O	S	0	0
			5	4	1		

Continued on next page...

Continued from previous page...

Mol	Chain	Residues	Atoms			ZeroOcc	AltConf
2	B	1	Total	O	S	0	0
			5	4	1		

- Molecule 3 is PHOSPHONIC ACIDMONO-(2-AMINO-5,6-DIMERCAPTO-4-OXO-3,7,8A, 9,10,10A-HEXAHYDRO-4H-8-OXA-1,3,9,10-TETRAAZA-ANTHRACEN-7-YLMETHYL) ESTER (three-letter code: MTE) (formula: C₁₀H₁₄N₅O₆PS₂).



Mol	Chain	Residues	Atoms						ZeroOcc	AltConf
3	A	1	Total	C	N	O	P	S	0	0
			24	10	5	6	1	2		
3	B	1	Total	C	N	O	P	S	0	0
			24	10	5	6	1	2		

- Molecule 4 is MOLYBDENUM ATOM (three-letter code: MO) (formula: Mo).

Mol	Chain	Residues	Atoms		ZeroOcc	AltConf
4	B	1	Total	Mo	0	0
			1	1		
4	A	1	Total	Mo	0	0
			1	1		

- Molecule 5 is GLYCEROL (three-letter code: GOL) (formula: C₃H₈O₃).



Mol	Chain	Residues	Atoms			ZeroOcc	AltConf
5	B	1	Total	C	O	0	0
			6	3	3		

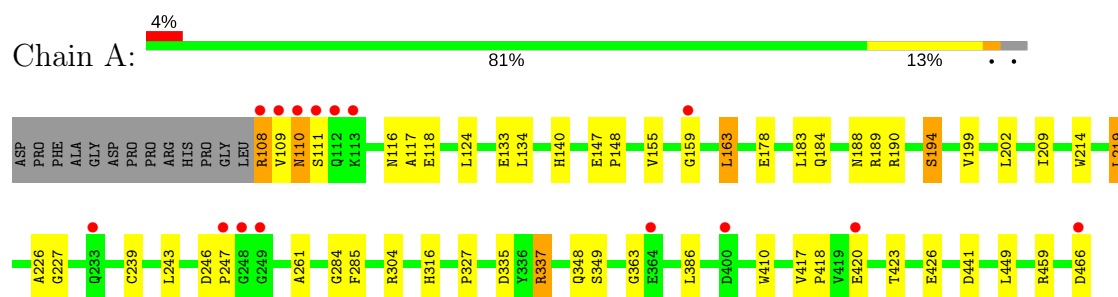
- Molecule 6 is water.

Mol	Chain	Residues	Atoms		ZeroOcc	AltConf
6	A	278	Total	O	0	0
			278	278		
6	B	254	Total	O	0	0
			254	254		

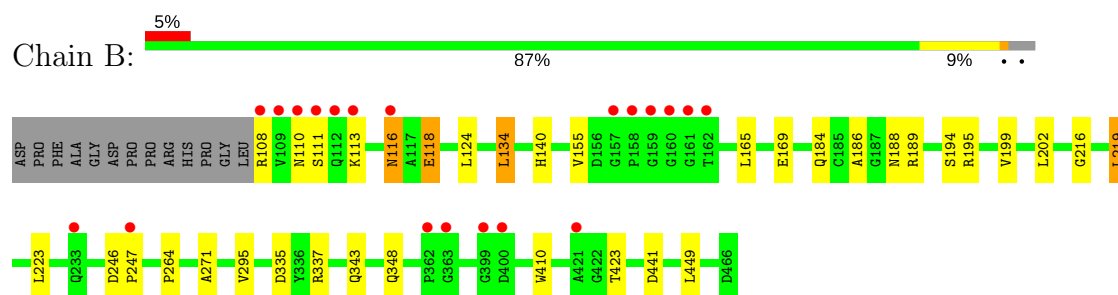
3 Residue-property plots [i](#)

These plots are drawn for all protein, RNA and DNA chains in the entry. The first graphic for a chain summarises the proportions of the various outlier classes displayed in the second graphic. The second graphic shows the sequence view annotated by issues in geometry and electron density. Residues are color-coded according to the number of geometric quality criteria for which they contain at least one outlier: green = 0, yellow = 1, orange = 2 and red = 3 or more. A red dot above a residue indicates a poor fit to the electron density ($RSRZ > 2$). Stretches of 2 or more consecutive residues without any outlier are shown as a green connector. Residues present in the sample, but not in the model, are shown in grey.

• Molecule 1: Sulfite Oxidase



• Molecule 1: Sulfite Oxidase



4 Data and refinement statistics

Property	Value	Source
Space group	P 1 21 1	Depositor
Cell constants a, b, c, α , β , γ	53.91Å 122.57Å 55.18Å 90.00° 94.97° 90.00°	Depositor
Resolution (Å)	30.00 – 2.50 28.65 – 2.51	Depositor EDS
% Data completeness (in resolution range)	97.2 (30.00-2.50) 97.2 (28.65-2.51)	Depositor EDS
R_{merge}	0.16	Depositor
R_{sym}	(Not available)	Depositor
$\langle I/\sigma(I) \rangle$ ¹	2.33 (at 2.51Å)	Xtriage
Refinement program	REFMAC 5.2	Depositor
R, R_{free}	0.156 , 0.237 0.165 , 0.242	Depositor DCC
R_{free} test set	1215 reflections (5.09%)	wwPDB-VP
Wilson B-factor (Å ²)	23.3	Xtriage
Anisotropy	0.304	Xtriage
Bulk solvent k_{sol} (e/Å ³), B_{sol} (Å ²)	0.36 , 48.4	EDS
L-test for twinning ²	$\langle L \rangle = 0.49$, $\langle L^2 \rangle = 0.32$	Xtriage
Estimated twinning fraction	0.031 for l,-k,h	Xtriage
F_o, F_c correlation	0.95	EDS
Total number of atoms	6142	wwPDB-VP
Average B, all atoms (Å ²)	22.0	wwPDB-VP

Xtriage's analysis on translational NCS is as follows: *The largest off-origin peak in the Patterson function is 5.47% of the height of the origin peak. No significant pseudotranslation is detected.*

¹Intensities estimated from amplitudes.

²Theoretical values of $\langle |L| \rangle$, $\langle L^2 \rangle$ for acentric reflections are 0.5, 0.333 respectively for untwinned datasets, and 0.375, 0.2 for perfectly twinned datasets.

5 Model quality [i](#)

5.1 Standard geometry [i](#)

Bond lengths and bond angles in the following residue types are not validated in this section: GOL, MO, SO4, MTE

The Z score for a bond length (or angle) is the number of standard deviations the observed value is removed from the expected value. A bond length (or angle) with $|Z| > 5$ is considered an outlier worth inspection. RMSZ is the root-mean-square of all Z scores of the bond lengths (or angles).

Mol	Chain	Bond lengths		Bond angles	
		RMSZ	$\# Z > 5$	RMSZ	$\# Z > 5$
1	A	0.73	1/2854 (0.0%)	0.84	1/3904 (0.0%)
1	B	0.77	0/2854	0.87	1/3904 (0.0%)
All	All	0.75	1/5708 (0.0%)	0.86	2/7808 (0.0%)

All (1) bond length outliers are listed below:

Mol	Chain	Res	Type	Atoms	Z	Observed(Å)	Ideal(Å)
1	A	239	CYS	CB-SG	-5.15	1.73	1.81

All (2) bond angle outliers are listed below:

Mol	Chain	Res	Type	Atoms	Z	Observed(°)	Ideal(°)
1	B	134	LEU	CA-CB-CG	5.54	128.04	115.30
1	A	337	ARG	NE-CZ-NH1	5.02	122.81	120.30

There are no chirality outliers.

There are no planarity outliers.

5.2 Too-close contacts [i](#)

In the following table, the Non-H and H(model) columns list the number of non-hydrogen atoms and hydrogen atoms in the chain respectively. The H(added) column lists the number of hydrogen atoms added and optimized by MolProbity. The Clashes column lists the number of clashes within the asymmetric unit, whereas Symm-Clashes lists symmetry related clashes.

Mol	Chain	Non-H	H(model)	H(added)	Clashes	Symm-Clashes
1	A	2772	0	2714	37	0
1	B	2772	0	2714	22	0
2	A	5	0	0	0	0

Continued on next page...

Continued from previous page...

Mol	Chain	Non-H	H(model)	H(added)	Clashes	Symm-Clashes
2	B	5	0	0	1	0
3	A	24	0	10	1	0
3	B	24	0	10	1	0
4	A	1	0	0	0	0
4	B	1	0	0	0	0
5	B	6	0	8	0	0
6	A	278	0	0	6	1
6	B	254	0	0	6	1
All	All	6142	0	5456	60	1

The all-atom clashscore is defined as the number of clashes found per 1000 atoms (including hydrogen atoms). The all-atom clashscore for this structure is 6.

All (60) close contacts within the same asymmetric unit are listed below, sorted by their clash magnitude.

Atom-1	Atom-2	Interatomic distance (Å)	Clash overlap (Å)
1:B:116:ASN:HD22	1:B:202:LEU:HD13	1.25	0.98
1:A:227:GLY:O	6:A:7709:HOH:O	1.96	0.82
1:A:316:HIS:ND1	6:A:7634:HOH:O	2.16	0.78
1:B:116:ASN:ND2	1:B:202:LEU:HD13	2.00	0.75
1:A:189:ARG:HH11	1:A:348:GLN:HE22	1.37	0.72
2:B:8503:SO4:O4	6:B:9756:HOH:O	2.08	0.69
1:B:110:ASN:ND2	6:B:9722:HOH:O	2.25	0.67
1:B:111:SER:HB3	1:B:116:ASN:HB3	1.80	0.62
1:B:423:THR:HG21	6:B:9702:HOH:O	1.99	0.62
1:A:109:VAL:HG23	6:A:7719:HOH:O	1.98	0.62
1:A:189:ARG:HH11	1:A:348:GLN:NE2	1.98	0.61
1:A:163:LEU:HD12	1:A:226:ALA:HB2	1.83	0.61
1:B:189:ARG:HH11	1:B:348:GLN:HE22	1.50	0.59
1:A:111:SER:HB3	1:A:116:ASN:OD1	2.02	0.59
1:B:184:GLN:HE21	1:B:188:ASN:HD22	1.50	0.59
1:A:184:GLN:HE21	1:A:188:ASN:HD22	1.52	0.58
1:A:348:GLN:HE21	1:A:349:SER:H	1.50	0.58
1:A:386:LEU:HD11	1:A:417:VAL:HG11	1.86	0.57
1:A:133:GLU:H	1:A:133:GLU:CD	2.09	0.56
1:B:189:ARG:HH11	1:B:348:GLN:NE2	2.06	0.54
1:B:113:LYS:HB3	6:B:9649:HOH:O	2.07	0.54
1:B:140:HIS:HE1	3:B:4501:MTE:S1'	2.31	0.53
1:B:246:ASP:HB2	1:B:247:PRO:CD	2.39	0.52
1:A:110:ASN:HB2	1:A:116:ASN:HD21	1.75	0.52
1:B:184:GLN:NE2	1:B:188:ASN:HD22	2.09	0.51

Continued on next page...

Continued from previous page...

Atom-1	Atom-2	Interatomic distance (Å)	Clash overlap (Å)
1:A:109:VAL:HG22	1:A:117:ALA:HB2	1.93	0.49
1:B:116:ASN:OD1	1:B:116:ASN:C	2.51	0.48
1:A:190:ARG:HD2	1:A:202:LEU:O	2.14	0.47
1:A:426:GLU:OE2	1:A:459:ARG:HD3	2.15	0.47
1:A:184:GLN:NE2	1:A:188:ASN:HD22	2.12	0.47
1:B:335:ASP:OD1	1:B:337:ARG:HD3	2.15	0.46
1:A:147:GLU:OE1	1:A:148:PRO:HD2	2.14	0.46
1:B:194:SER:OG	1:B:199:VAL:HG22	2.15	0.46
1:B:165:LEU:HA	1:B:169:GLU:OE2	2.16	0.46
1:B:216:GLY:HA3	1:B:271:ALA:HA	1.99	0.45
1:A:363:GLY:O	1:A:418:PRO:HA	2.17	0.45
1:B:186:ALA:HB2	1:B:295:VAL:HG21	1.99	0.45
1:A:316:HIS:CE1	6:A:7634:HOH:O	2.66	0.45
1:A:108:ARG:HG3	1:A:118:GLU:O	2.17	0.44
1:A:219:LEU:HD13	1:A:261:ALA:HB1	1.99	0.44
1:A:246:ASP:HB2	1:A:247:PRO:HD2	1.99	0.44
1:B:264:PRO:HD2	6:B:9554:HOH:O	2.17	0.44
1:A:194:SER:OG	1:A:199:VAL:HG22	2.17	0.44
1:A:178:GLU:HA	1:A:214:TRP:O	2.18	0.44
1:A:140:HIS:HE1	3:A:1501:MTE:S1'	2.42	0.43
1:A:304:ARG:HD2	6:A:7672:HOH:O	2.18	0.43
1:A:110:ASN:OD1	1:A:110:ASN:N	2.52	0.43
1:B:108:ARG:N	1:B:118:GLU:O	2.52	0.43
1:B:219:LEU:HD22	1:B:223:LEU:HG	2.00	0.43
1:A:159:GLY:N	6:A:7777:HOH:O	2.44	0.43
1:A:243:LEU:HG	1:A:304:ARG:HB3	2.01	0.42
1:A:184:GLN:HE21	1:A:188:ASN:HB3	1.84	0.42
1:A:183:LEU:O	1:A:209:ILE:HA	2.20	0.42
1:A:417:VAL:HG22	1:A:418:PRO:HD2	2.00	0.42
1:A:420:GLU:O	1:A:423:THR:OG1	2.26	0.42
1:A:116:ASN:CG	1:A:202:LEU:HD13	2.40	0.41
1:A:189:ARG:NH1	1:A:348:GLN:HE22	2.13	0.41
1:B:343:GLN:NE2	6:B:9591:HOH:O	2.53	0.41
1:A:335:ASP:OD1	1:A:337:ARG:HD3	2.21	0.41
1:A:284:GLY:O	1:A:285:PHE:C	2.60	0.40

All (1) symmetry-related close contacts are listed below. The label for Atom-2 includes the symmetry operator and encoded unit-cell translations to be applied.

Atom-1	Atom-2	Interatomic distance (Å)	Clash overlap (Å)
6:A:7538:HOH:O	6:B:9704:HOH:O[1_554]	2.19	0.01

5.3 Torsion angles

5.3.1 Protein backbone

In the following table, the Percentiles column shows the percent Ramachandran outliers of the chain as a percentile score with respect to all X-ray entries followed by that with respect to entries of similar resolution.

The Analysed column shows the number of residues for which the backbone conformation was analysed, and the total number of residues.

Mol	Chain	Analysed	Favoured	Allowed	Outliers	Percentiles	
1	A	357/372 (96%)	345 (97%)	12 (3%)	0	100	100
1	B	357/372 (96%)	348 (98%)	9 (2%)	0	100	100
All	All	714/744 (96%)	693 (97%)	21 (3%)	0	100	100

There are no Ramachandran outliers to report.

5.3.2 Protein sidechains

In the following table, the Percentiles column shows the percent sidechain outliers of the chain as a percentile score with respect to all X-ray entries followed by that with respect to entries of similar resolution.

The Analysed column shows the number of residues for which the sidechain conformation was analysed, and the total number of residues.

Mol	Chain	Analysed	Rotameric	Outliers	Percentiles	
1	A	291/301 (97%)	278 (96%)	13 (4%)	30	54
1	B	291/301 (97%)	281 (97%)	10 (3%)	40	67
All	All	582/602 (97%)	559 (96%)	23 (4%)	34	60

All (23) residues with a non-rotameric sidechain are listed below:

Mol	Chain	Res	Type
1	A	108	ARG
1	A	110	ASN
1	A	124	LEU
1	A	134	LEU
1	A	155	VAL
1	A	163	LEU
1	A	194	SER
1	A	219	LEU

Continued on next page...

Continued from previous page...

Mol	Chain	Res	Type
1	A	327	PRO
1	A	410	TRP
1	A	441	ASP
1	A	449	LEU
1	A	466	ASP
1	B	116	ASN
1	B	118	GLU
1	B	124	LEU
1	B	134	LEU
1	B	155	VAL
1	B	195	ARG
1	B	219	LEU
1	B	410	TRP
1	B	441	ASP
1	B	449	LEU

Some sidechains can be flipped to improve hydrogen bonding and reduce clashes. All (12) such sidechains are listed below:

Mol	Chain	Res	Type
1	A	177	HIS
1	A	184	GLN
1	A	319	GLN
1	A	343	GLN
1	A	348	GLN
1	A	465	GLN
1	B	177	HIS
1	B	184	GLN
1	B	319	GLN
1	B	343	GLN
1	B	348	GLN
1	B	465	GLN

5.3.3 RNA ⓘ

There are no RNA molecules in this entry.

5.4 Non-standard residues in protein, DNA, RNA chains ⓘ

There are no non-standard protein/DNA/RNA residues in this entry.

5.5 Carbohydrates [i](#)

There are no carbohydrates in this entry.

5.6 Ligand geometry [i](#)

Of 7 ligands modelled in this entry, 2 are monoatomic - leaving 5 for Mogul analysis.

In the following table, the Counts columns list the number of bonds (or angles) for which Mogul statistics could be retrieved, the number of bonds (or angles) that are observed in the model and the number of bonds (or angles) that are defined in the Chemical Component Dictionary. The Link column lists molecule types, if any, to which the group is linked. The Z score for a bond length (or angle) is the number of standard deviations the observed value is removed from the expected value. A bond length (or angle) with $|Z| > 2$ is considered an outlier worth inspection. RMSZ is the root-mean-square of all Z scores of the bond lengths (or angles).

Mol	Type	Chain	Res	Link	Bond lengths			Bond angles		
					Counts	RMSZ	# Z > 2	Counts	RMSZ	# Z > 2
3	MTE	A	1501	4	21,26,26	2.88	6 (28%)	19,40,40	2.91	10 (52%)
2	SO4	A	7503	-	4,4,4	0.11	0	6,6,6	0.45	0
3	MTE	B	4501	4	21,26,26	2.19	6 (28%)	19,40,40	2.67	8 (42%)
2	SO4	B	8503	-	4,4,4	0.16	0	6,6,6	0.57	0
5	GOL	B	9505	-	5,5,5	0.32	0	5,5,5	0.64	0

In the following table, the Chirals column lists the number of chiral outliers, the number of chiral centers analysed, the number of these observed in the model and the number defined in the Chemical Component Dictionary. Similar counts are reported in the Torsion and Rings columns. '-' means no outliers of that kind were identified.

Mol	Type	Chain	Res	Link	Chirals	Torsions	Rings
3	MTE	A	1501	4	-	0/6/34/34	0/3/3/3
2	SO4	A	7503	-	-	0/0/0/0	0/0/0/0
3	MTE	B	4501	4	-	0/6/34/34	0/3/3/3
2	SO4	B	8503	-	-	0/0/0/0	0/0/0/0
5	GOL	B	9505	-	-	0/4/4/4	0/0/0/0

All (12) bond length outliers are listed below:

Mol	Chain	Res	Type	Atoms	Z	Observed(Å)	Ideal(Å)
3	A	1501	MTE	C6-N5	-6.07	1.37	1.45
3	B	4501	MTE	C6-N5	-6.07	1.37	1.45
3	B	4501	MTE	C4'-C3'	-4.88	1.45	1.52
3	A	1501	MTE	C4'-C3'	-3.86	1.46	1.52
3	B	4501	MTE	C7-N8	-2.27	1.40	1.44

Continued on next page...

Continued from previous page...

Mol	Chain	Res	Type	Atoms	Z	Observed(Å)	Ideal(Å)
3	B	4501	MTE	P-O2P	-2.22	1.45	1.54
3	A	1501	MTE	P-O4'	-2.15	1.53	1.60
3	A	1501	MTE	C4-N3	2.26	1.37	1.33
3	B	4501	MTE	C7-C6	2.46	1.55	1.53
3	A	1501	MTE	O3'-C7	2.95	1.48	1.43
3	B	4501	MTE	C4-N3	3.65	1.39	1.33
3	A	1501	MTE	C7-C6	9.31	1.60	1.53

All (18) bond angle outliers are listed below:

Mol	Chain	Res	Type	Atoms	Z	Observed(°)	Ideal(°)
3	B	4501	MTE	O3'-C7-C6	-5.38	105.38	108.96
3	B	4501	MTE	N3-C2-N1	-5.17	117.21	125.43
3	A	1501	MTE	N3-C2-N1	-4.82	117.77	125.43
3	A	1501	MTE	O3'-C7-C6	-3.51	106.62	108.96
3	A	1501	MTE	C9-C4-N3	-2.92	115.33	123.91
3	A	1501	MTE	C10-N8-C7	-2.65	118.48	123.67
3	B	4501	MTE	C9-C4-N3	-2.61	116.25	123.91
3	A	1501	MTE	N8-C10-N1	-2.19	112.66	116.90
3	B	4501	MTE	O2P-P-O4'	2.34	112.97	106.73
3	A	1501	MTE	C4-C9-C10	2.39	116.73	114.56
3	B	4501	MTE	N2-C2-N1	2.40	121.01	117.25
3	A	1501	MTE	O3P-P-O2P	2.61	117.93	107.59
3	A	1501	MTE	C2-N1-C10	2.80	120.78	114.50
3	B	4501	MTE	C2-N1-C10	2.87	120.93	114.50
3	B	4501	MTE	C4-C9-C10	3.39	117.63	114.56
3	A	1501	MTE	C9-C10-N8	5.44	123.11	118.13
3	B	4501	MTE	C4-N3-C2	5.91	124.56	116.06
3	A	1501	MTE	C4-N3-C2	6.23	125.02	116.06

There are no chirality outliers.

There are no torsion outliers.

There are no ring outliers.

3 monomers are involved in 3 short contacts:

Mol	Chain	Res	Type	Clashes	Symm-Clashes
3	A	1501	MTE	1	0
3	B	4501	MTE	1	0
2	B	8503	SO4	1	0

5.7 Other polymers

There are no such residues in this entry.

5.8 Polymer linkage issues

There are no chain breaks in this entry.

6 Fit of model and data

6.1 Protein, DNA and RNA chains

In the following table, the column labelled ‘#RSRZ > 2’ contains the number (and percentage) of RSRZ outliers, followed by percent RSRZ outliers for the chain as percentile scores relative to all X-ray entries and entries of similar resolution. The OWAB column contains the minimum, median, 95th percentile and maximum values of the occupancy-weighted average B-factor per residue. The column labelled ‘Q < 0.9’ lists the number of (and percentage) of residues with an average occupancy less than 0.9.

Mol	Chain	Analysed	<RSRZ>	#RSRZ>2	OWAB(Å ²)	Q<0.9
1	A	359/372 (96%)	-0.09	15 (4%) 36 39	11, 19, 37, 66	0
1	B	359/372 (96%)	0.06	20 (5%) 24 26	11, 19, 37, 65	0
All	All	718/744 (96%)	-0.01	35 (4%) 29 32	11, 19, 37, 66	0

All (35) RSRZ outliers are listed below:

Mol	Chain	Res	Type	RSRZ
1	B	109	VAL	7.9
1	B	111	SER	7.0
1	B	160	GLY	6.7
1	A	112	GLN	6.1
1	B	113	LYS	5.0
1	A	109	VAL	4.8
1	B	159	GLY	4.8
1	B	112	GLN	4.7
1	B	110	ASN	4.5
1	B	157	GLY	4.2
1	A	111	SER	4.1
1	B	161	GLY	3.8
1	B	158	PRO	3.6
1	A	113	LYS	3.6
1	A	110	ASN	3.4
1	B	400	ASP	3.3
1	A	249	GLY	3.1
1	A	466	ASP	3.0
1	B	108	ARG	3.0
1	B	162	THR	2.9
1	B	363	GLY	2.9
1	A	108	ARG	2.8
1	A	247	PRO	2.8
1	B	247	PRO	2.8

Continued on next page...

Continued from previous page...

Mol	Chain	Res	Type	RSRZ
1	B	233	GLN	2.7
1	A	420	GLU	2.7
1	B	421	ALA	2.6
1	A	248	GLY	2.3
1	B	362	PRO	2.3
1	A	233	GLN	2.3
1	A	159	GLY	2.1
1	B	399	GLY	2.1
1	A	400	ASP	2.1
1	B	116	ASN	2.1
1	A	364	GLU	2.1

6.2 Non-standard residues in protein, DNA, RNA chains [i](#)

There are no non-standard protein/DNA/RNA residues in this entry.

6.3 Carbohydrates [i](#)

There are no carbohydrates in this entry.

6.4 Ligands [i](#)

In the following table, the Atoms column lists the number of modelled atoms in the group and the number defined in the chemical component dictionary. The B-factors column lists the minimum, median, 95th percentile and maximum values of B factors of atoms in the group. The column labelled 'Q<0.9' lists the number of atoms with occupancy less than 0.9.

Mol	Type	Chain	Res	Atoms	RSCC	RSR	B-factors(\AA^2)	Q<0.9
5	GOL	B	9505	6/6	0.89	0.33	49,49,49,49	0
3	MTE	A	1501	24/24	0.97	0.12	12,13,13,14	0
2	SO4	B	8503	5/5	0.97	0.10	38,38,39,39	0
3	MTE	B	4501	24/24	0.97	0.13	12,14,16,17	0
4	MO	B	5501	1/1	0.99	0.06	17,17,17,17	0
2	SO4	A	7503	5/5	0.99	0.10	36,36,36,37	0
4	MO	A	2501	1/1	1.00	0.05	14,14,14,14	0

6.5 Other polymers [i](#)

There are no such residues in this entry.