



wwPDB X-ray Structure Validation Summary Report ⓘ

Dec 17, 2018 – 11:36 AM EST

PDB ID : 6A9F
Title : Crystal structure of a cyclase from Fischerella sp. TAU in complex with 4-(1H-Indol-3-yl)butan-2-one
Authors : Hu, X.Y.; Liu, W.D.; Chen, C.C.; Guo, R.T.
Deposited on : 2018-07-13
Resolution : 1.70 Å(reported)

This is a wwPDB X-ray Structure Validation Summary Report for a publicly released PDB entry.

We welcome your comments at validation@mail.wwpdb.org

A user guide is available at

<https://www.wwpdb.org/validation/2017/XrayValidationReportHelp>

with specific help available everywhere you see the ⓘ symbol.

The following versions of software and data (see [references ⓘ](#)) were used in the production of this report:

MolProbity : 4.02b-467
Mogul : 1.7.3 (157068), CSD as539be (2018)
Xtriage (Phenix) : 1.13
EDS : rb-20031633
Percentile statistics : 20171227.v01 (using entries in the PDB archive December 27th 2017)
Refmac : 5.8.0158
CCP4 : 7.0 (Gargrove)
Ideal geometry (proteins) : Engh & Huber (2001)
Ideal geometry (DNA, RNA) : Parkinson et al. (1996)
Validation Pipeline (wwPDB-VP) : rb-20031633

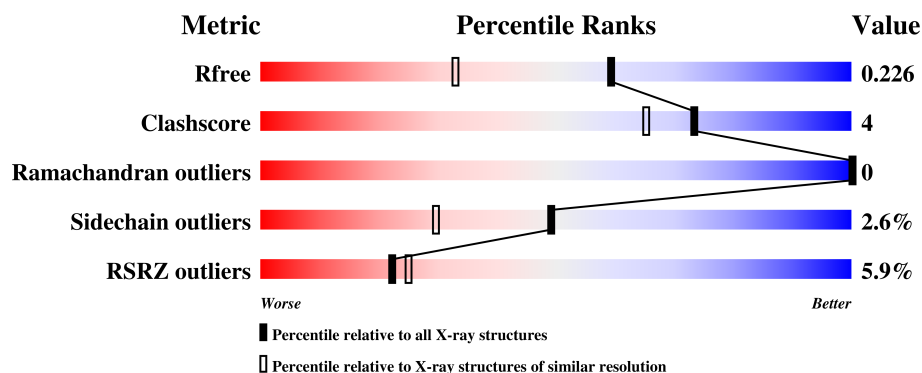
1 Overall quality at a glance

The following experimental techniques were used to determine the structure:

X-RAY DIFFRACTION

The reported resolution of this entry is 1.70 Å.

Percentile scores (ranging between 0-100) for global validation metrics of the entry are shown in the following graphic. The table shows the number of entries on which the scores are based.



Metric	Whole archive (#Entries)	Similar resolution (#Entries, resolution range(Å))
R_{free}	111664	3793 (1.70-1.70)
Clashscore	122126	4167 (1.70-1.70)
Ramachandran outliers	120053	4100 (1.70-1.70)
Sidechain outliers	120020	4100 (1.70-1.70)
RSRZ outliers	108989	3718 (1.70-1.70)

The table below summarises the geometric issues observed across the polymeric chains and their fit to the electron density. The red, orange, yellow and green segments on the lower bar indicate the fraction of residues that contain outliers for ≥ 3 , 2, 1 and 0 types of geometric quality criteria. A grey segment represents the fraction of residues that are not modelled. The numeric value for each fraction is indicated below the corresponding segment, with a dot representing fractions $\leq 5\%$. The upper red bar (where present) indicates the fraction of residues that have poor fit to the electron density. The numeric value is given above the bar.

Mol	Chain	Length	Quality of chain
1	A	223	<div> <div>3%</div> <div>83% 6% 10%</div> </div>
1	B	223	<div> <div>6%</div> <div>81% 8% 10%</div> </div>
1	C	223	<div> <div>7%</div> <div>82% 6% 11%</div> </div>
1	D	223	<div> <div>5%</div> <div>79% 11% 10%</div> </div>

2 Entry composition

There are 6 unique types of molecules in this entry. The entry contains 6713 atoms, of which 0 are hydrogens and 0 are deuteriums.

In the tables below, the ZeroOcc column contains the number of atoms modelled with zero occupancy, the AltConf column contains the number of residues with at least one atom in alternate conformation and the Trace column contains the number of residues modelled with at most 2 atoms.

- Molecule 1 is a protein called aromatic prenyltransferase.

Mol	Chain	Residues	Atoms				ZeroOcc	AltConf	Trace
1	A	200	Total	C	N	O	0	0	0
			1532	978	251	303			
1	B	200	Total	C	N	O	0	0	0
			1532	978	251	303			
1	C	198	Total	C	N	O	0	0	0
			1515	969	249	297			
1	D	200	Total	C	N	O	0	0	0
			1532	978	251	303			

There are 84 discrepancies between the modelled and reference sequences:

Chain	Residue	Modelled	Actual	Comment	Reference
A	6	MET	-	initiating methionine	UNP A0A1P8VSL7
A	7	GLY	-	expression tag	UNP A0A1P8VSL7
A	8	SER	-	expression tag	UNP A0A1P8VSL7
A	9	SER	-	expression tag	UNP A0A1P8VSL7
A	10	HIS	-	expression tag	UNP A0A1P8VSL7
A	11	HIS	-	expression tag	UNP A0A1P8VSL7
A	12	HIS	-	expression tag	UNP A0A1P8VSL7
A	13	HIS	-	expression tag	UNP A0A1P8VSL7
A	14	HIS	-	expression tag	UNP A0A1P8VSL7
A	15	HIS	-	expression tag	UNP A0A1P8VSL7
A	16	SER	-	expression tag	UNP A0A1P8VSL7
A	17	SER	-	expression tag	UNP A0A1P8VSL7
A	18	GLY	-	expression tag	UNP A0A1P8VSL7
A	19	LEU	-	expression tag	UNP A0A1P8VSL7
A	20	VAL	-	expression tag	UNP A0A1P8VSL7
A	21	PRO	-	expression tag	UNP A0A1P8VSL7
A	22	ARG	-	expression tag	UNP A0A1P8VSL7
A	23	GLY	-	expression tag	UNP A0A1P8VSL7
A	24	SER	-	expression tag	UNP A0A1P8VSL7
A	25	HIS	-	expression tag	UNP A0A1P8VSL7
A	26	MET	-	expression tag	UNP A0A1P8VSL7

Continued on next page...

Continued from previous page...

Chain	Residue	Modelled	Actual	Comment	Reference
B	6	MET	-	initiating methionine	UNP A0A1P8VSL7
B	7	GLY	-	expression tag	UNP A0A1P8VSL7
B	8	SER	-	expression tag	UNP A0A1P8VSL7
B	9	SER	-	expression tag	UNP A0A1P8VSL7
B	10	HIS	-	expression tag	UNP A0A1P8VSL7
B	11	HIS	-	expression tag	UNP A0A1P8VSL7
B	12	HIS	-	expression tag	UNP A0A1P8VSL7
B	13	HIS	-	expression tag	UNP A0A1P8VSL7
B	14	HIS	-	expression tag	UNP A0A1P8VSL7
B	15	HIS	-	expression tag	UNP A0A1P8VSL7
B	16	SER	-	expression tag	UNP A0A1P8VSL7
B	17	SER	-	expression tag	UNP A0A1P8VSL7
B	18	GLY	-	expression tag	UNP A0A1P8VSL7
B	19	LEU	-	expression tag	UNP A0A1P8VSL7
B	20	VAL	-	expression tag	UNP A0A1P8VSL7
B	21	PRO	-	expression tag	UNP A0A1P8VSL7
B	22	ARG	-	expression tag	UNP A0A1P8VSL7
B	23	GLY	-	expression tag	UNP A0A1P8VSL7
B	24	SER	-	expression tag	UNP A0A1P8VSL7
B	25	HIS	-	expression tag	UNP A0A1P8VSL7
B	26	MET	-	expression tag	UNP A0A1P8VSL7
C	6	MET	-	initiating methionine	UNP A0A1P8VSL7
C	7	GLY	-	expression tag	UNP A0A1P8VSL7
C	8	SER	-	expression tag	UNP A0A1P8VSL7
C	9	SER	-	expression tag	UNP A0A1P8VSL7
C	10	HIS	-	expression tag	UNP A0A1P8VSL7
C	11	HIS	-	expression tag	UNP A0A1P8VSL7
C	12	HIS	-	expression tag	UNP A0A1P8VSL7
C	13	HIS	-	expression tag	UNP A0A1P8VSL7
C	14	HIS	-	expression tag	UNP A0A1P8VSL7
C	15	HIS	-	expression tag	UNP A0A1P8VSL7
C	16	SER	-	expression tag	UNP A0A1P8VSL7
C	17	SER	-	expression tag	UNP A0A1P8VSL7
C	18	GLY	-	expression tag	UNP A0A1P8VSL7
C	19	LEU	-	expression tag	UNP A0A1P8VSL7
C	20	VAL	-	expression tag	UNP A0A1P8VSL7
C	21	PRO	-	expression tag	UNP A0A1P8VSL7
C	22	ARG	-	expression tag	UNP A0A1P8VSL7
C	23	GLY	-	expression tag	UNP A0A1P8VSL7
C	24	SER	-	expression tag	UNP A0A1P8VSL7
C	25	HIS	-	expression tag	UNP A0A1P8VSL7
C	26	MET	-	expression tag	UNP A0A1P8VSL7

Continued on next page...

Continued from previous page...

Chain	Residue	Modelled	Actual	Comment	Reference
D	6	MET	-	initiating methionine	UNP A0A1P8VSL7
D	7	GLY	-	expression tag	UNP A0A1P8VSL7
D	8	SER	-	expression tag	UNP A0A1P8VSL7
D	9	SER	-	expression tag	UNP A0A1P8VSL7
D	10	HIS	-	expression tag	UNP A0A1P8VSL7
D	11	HIS	-	expression tag	UNP A0A1P8VSL7
D	12	HIS	-	expression tag	UNP A0A1P8VSL7
D	13	HIS	-	expression tag	UNP A0A1P8VSL7
D	14	HIS	-	expression tag	UNP A0A1P8VSL7
D	15	HIS	-	expression tag	UNP A0A1P8VSL7
D	16	SER	-	expression tag	UNP A0A1P8VSL7
D	17	SER	-	expression tag	UNP A0A1P8VSL7
D	18	GLY	-	expression tag	UNP A0A1P8VSL7
D	19	LEU	-	expression tag	UNP A0A1P8VSL7
D	20	VAL	-	expression tag	UNP A0A1P8VSL7
D	21	PRO	-	expression tag	UNP A0A1P8VSL7
D	22	ARG	-	expression tag	UNP A0A1P8VSL7
D	23	GLY	-	expression tag	UNP A0A1P8VSL7
D	24	SER	-	expression tag	UNP A0A1P8VSL7
D	25	HIS	-	expression tag	UNP A0A1P8VSL7
D	26	MET	-	expression tag	UNP A0A1P8VSL7

- Molecule 2 is MAGNESIUM ION (three-letter code: MG) (formula: Mg).

Mol	Chain	Residues	Atoms	ZeroOcc	AltConf
2	A	1	Total Mg 1 1	0	0
2	D	1	Total Mg 1 1	0	0
2	C	1	Total Mg 1 1	0	0

- Molecule 3 is CALCIUM ION (three-letter code: CA) (formula: Ca).

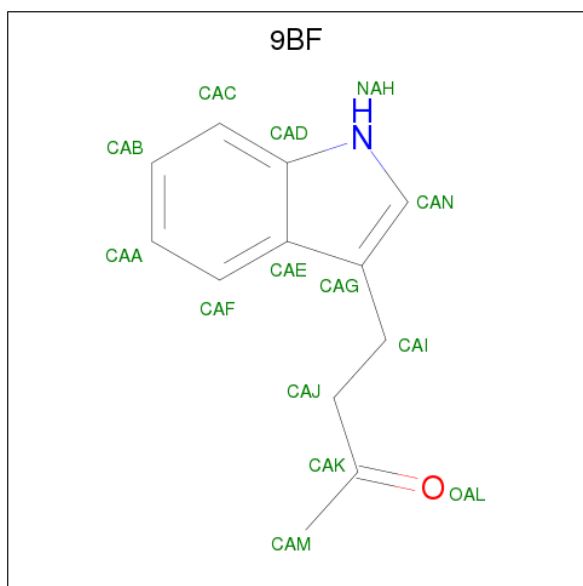
Mol	Chain	Residues	Atoms	ZeroOcc	AltConf
3	B	2	Total Ca 2 2	0	0
3	A	2	Total Ca 2 2	0	0
3	D	2	Total Ca 2 2	0	0

Continued on next page...

Continued from previous page...

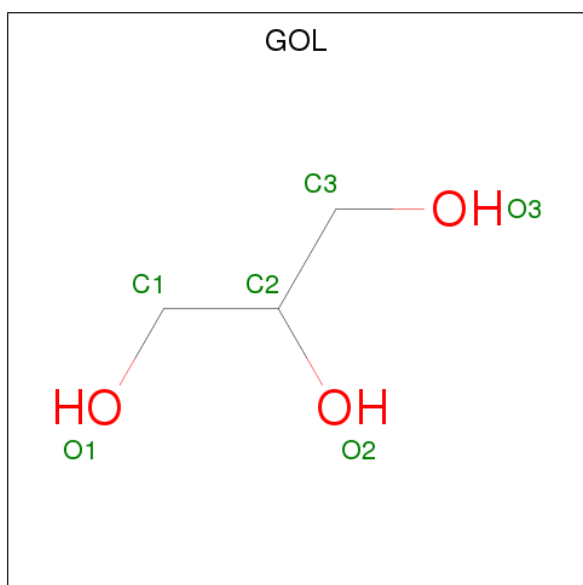
Mol	Chain	Residues	Atoms			ZeroOcc	AltConf
3	C	2	Total	Ca		0	0
			2	2			

- Molecule 4 is 4-(1 {H}-indol-3-yl)butan-2-one (three-letter code: 9BF) (formula: C₁₂H₁₃NO).



Mol	Chain	Residues	Atoms				ZeroOcc	AltConf
4	B	1	Total	C	N	O	0	0
			14	12	1	1		

- Molecule 5 is GLYCEROL (three-letter code: GOL) (formula: C₃H₈O₃).

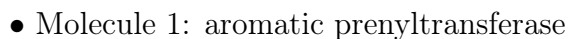
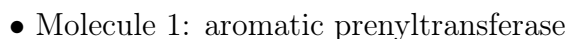


Mol	Chain	Residues	Atoms			ZeroOcc	AltConf
5	D	1	Total	C	O	0	0
			6	3	3		

- Molecule 6 is water.

Mol	Chain	Residues	Atoms		ZeroOcc	AltConf
6	A	156	Total	O	0	0
			156	156		
6	B	148	Total	O	0	0
			148	148		
6	C	143	Total	O	0	0
			143	143		
6	D	124	Total	O	0	0
			124	124		

- Molecule 1: aromatic prenyltransferase





4 Data and refinement statistics

Property	Value	Source
Space group	P 1	Depositor
Cell constants a, b, c, α , β , γ	39.73Å 53.28Å 94.88Å 104.56° 91.14° 94.16°	Depositor
Resolution (Å)	23.92 – 1.70 23.91 – 1.70	Depositor EDS
% Data completeness (in resolution range)	96.8 (23.92-1.70) 96.8 (23.91-1.70)	Depositor EDS
R_{merge}	0.04	Depositor
R_{sym}	(Not available)	Depositor
$\langle I/\sigma(I) \rangle$ ¹	2.17 (at 1.70Å)	Xtriage
Refinement program	REFMAC 5.8.0230	Depositor
R, R_{free}	0.188 , 0.211 0.203 , 0.226	Depositor DCC
R_{free} test set	3848 reflections (4.81%)	wwPDB-VP
Wilson B-factor (Å ²)	24.8	Xtriage
Anisotropy	0.204	Xtriage
Bulk solvent k_{sol} (e/Å ³), B_{sol} (Å ²)	0.34 , 43.8	EDS
L-test for twinning ²	$\langle L \rangle = 0.51$, $\langle L^2 \rangle = 0.34$	Xtriage
Estimated twinning fraction	0.004 for -h,-k,k+l	Xtriage
F_o, F_c correlation	0.96	EDS
Total number of atoms	6713	wwPDB-VP
Average B, all atoms (Å ²)	34.0	wwPDB-VP

Xtriage's analysis on translational NCS is as follows: *The largest off-origin peak in the Patterson function is 6.01% of the height of the origin peak. No significant pseudotranslation is detected.*

¹Intensities estimated from amplitudes.

²Theoretical values of $\langle |L| \rangle$, $\langle L^2 \rangle$ for acentric reflections are 0.5, 0.333 respectively for untwinned datasets, and 0.375, 0.2 for perfectly twinned datasets.

5 Model quality [i](#)

5.1 Standard geometry [i](#)

Bond lengths and bond angles in the following residue types are not validated in this section: GOL, MG, CA, 9BF

The Z score for a bond length (or angle) is the number of standard deviations the observed value is removed from the expected value. A bond length (or angle) with $|Z| > 5$ is considered an outlier worth inspection. RMSZ is the root-mean-square of all Z scores of the bond lengths (or angles).

Mol	Chain	Bond lengths		Bond angles	
		RMSZ	$\# Z > 5$	RMSZ	$\# Z > 5$
1	A	0.53	0/1570	0.79	0/2146
1	B	0.55	0/1570	0.84	0/2146
1	C	0.54	0/1552	0.85	0/2120
1	D	0.52	0/1570	0.82	0/2146
All	All	0.53	0/6262	0.82	0/8558

There are no bond length outliers.

There are no bond angle outliers.

There are no chirality outliers.

There are no planarity outliers.

5.2 Too-close contacts [i](#)

In the following table, the Non-H and H(model) columns list the number of non-hydrogen atoms and hydrogen atoms in the chain respectively. The H(added) column lists the number of hydrogen atoms added and optimized by MolProbity. The Clashes column lists the number of clashes within the asymmetric unit, whereas Symm-Clashes lists symmetry related clashes.

Mol	Chain	Non-H	H(model)	H(added)	Clashes	Symm-Clashes
1	A	1532	0	1491	9	0
1	B	1532	0	1491	16	0
1	C	1515	0	1480	9	0
1	D	1532	0	1491	11	0
2	A	1	0	0	0	0
2	C	1	0	0	0	0
2	D	1	0	0	0	0
3	A	2	0	0	0	0
3	B	2	0	0	0	0

Continued on next page...

Continued from previous page...

Mol	Chain	Non-H	H(model)	H(added)	Clashes	Symm-Clashes
3	C	2	0	0	0	0
3	D	2	0	0	0	0
4	B	14	0	0	0	0
5	D	6	0	8	0	0
6	A	156	0	0	4	0
6	B	148	0	0	1	0
6	C	143	0	0	2	0
6	D	124	0	0	0	0
All	All	6713	0	5961	44	0

The all-atom clashscore is defined as the number of clashes found per 1000 atoms (including hydrogen atoms). The all-atom clashscore for this structure is 4.

The worst 5 of 44 close contacts within the same asymmetric unit are listed below, sorted by their clash magnitude.

Atom-1	Atom-2	Interatomic distance (Å)	Clash overlap (Å)
1:A:162:ASP:HB3	6:A:520:HOH:O	1.76	0.86
1:A:144:GLN:NE2	6:A:401:HOH:O	2.27	0.67
1:B:89:TYR:HH	1:B:143:PHE:HD1	1.46	0.64
1:D:88:ALA:O	1:D:177:LYS:NZ	2.32	0.62
1:A:160:ALA:HB2	1:A:165:LEU:HD11	1.82	0.60

There are no symmetry-related clashes.

5.3 Torsion angles [i](#)

5.3.1 Protein backbone [i](#)

In the following table, the Percentiles column shows the percent Ramachandran outliers of the chain as a percentile score with respect to all X-ray entries followed by that with respect to entries of similar resolution.

The Analysed column shows the number of residues for which the backbone conformation was analysed, and the total number of residues.

Mol	Chain	Analysed	Favoured	Allowed	Outliers	Percentiles	
1	A	198/223 (89%)	194 (98%)	4 (2%)	0	100	100
1	B	198/223 (89%)	193 (98%)	5 (2%)	0	100	100
1	C	194/223 (87%)	190 (98%)	4 (2%)	0	100	100

Continued on next page...

Continued from previous page...

Mol	Chain	Analysed	Favoured	Allowed	Outliers	Percentiles	
1	D	198/223 (89%)	189 (96%)	9 (4%)	0	100	100
All	All	788/892 (88%)	766 (97%)	22 (3%)	0	100	100

There are no Ramachandran outliers to report.

5.3.2 Protein sidechains ⓘ

In the following table, the Percentiles column shows the percent sidechain outliers of the chain as a percentile score with respect to all X-ray entries followed by that with respect to entries of similar resolution.

The Analysed column shows the number of residues for which the sidechain conformation was analysed, and the total number of residues.

Mol	Chain	Analysed	Rotameric	Outliers	Percentiles	
1	A	164/183 (90%)	161 (98%)	3 (2%)	62	45
1	B	164/183 (90%)	161 (98%)	3 (2%)	62	45
1	C	162/183 (88%)	155 (96%)	7 (4%)	32	12
1	D	164/183 (90%)	160 (98%)	4 (2%)	52	33
All	All	654/732 (89%)	637 (97%)	17 (3%)	49	30

5 of 17 residues with a non-rotameric sidechain are listed below:

Mol	Chain	Res	Type
1	C	43	SER
1	C	44	LEU
1	D	43	SER
1	C	41	GLU
1	D	45	THR

Some sidechains can be flipped to improve hydrogen bonding and reduce clashes. There are no such sidechains identified.

5.3.3 RNA ⓘ

There are no RNA molecules in this entry.

5.4 Non-standard residues in protein, DNA, RNA chains [i](#)

There are no non-standard protein/DNA/RNA residues in this entry.

5.5 Carbohydrates [i](#)

There are no carbohydrates in this entry.

5.6 Ligand geometry [i](#)

Of 13 ligands modelled in this entry, 11 are monoatomic - leaving 2 for Mogul analysis.

In the following table, the Counts columns list the number of bonds (or angles) for which Mogul statistics could be retrieved, the number of bonds (or angles) that are observed in the model and the number of bonds (or angles) that are defined in the Chemical Component Dictionary. The Link column lists molecule types, if any, to which the group is linked. The Z score for a bond length (or angle) is the number of standard deviations the observed value is removed from the expected value. A bond length (or angle) with $|Z| > 2$ is considered an outlier worth inspection. RMSZ is the root-mean-square of all Z scores of the bond lengths (or angles).

Mol	Type	Chain	Res	Link	Bond lengths			Bond angles		
					Counts	RMSZ	$\# Z > 2$	Counts	RMSZ	$\# Z > 2$
4	9BF	B	301	-	14,15,15	2.12	5 (35%)	13,20,20	1.08	1 (7%)
5	GOL	D	301	-	5,5,5	0.85	0	5,5,5	1.71	2 (40%)

In the following table, the Chirals column lists the number of chiral outliers, the number of chiral centers analysed, the number of these observed in the model and the number defined in the Chemical Component Dictionary. Similar counts are reported in the Torsion and Rings columns. '-' means no outliers of that kind were identified.

Mol	Type	Chain	Res	Link	Chirals	Torsions	Rings
4	9BF	B	301	-	-	0/5/5/5	0/2/2/2
5	GOL	D	301	-	-	0/4/4/4	0/0/0/0

All (5) bond length outliers are listed below:

Mol	Chain	Res	Type	Atoms	Z	Observed(Å)	Ideal(Å)
4	B	301	9BF	CAC-CAD	-4.03	1.34	1.41
4	B	301	9BF	CAF-CAE	-3.93	1.34	1.42
4	B	301	9BF	CAE-CAD	-2.78	1.35	1.42
4	B	301	9BF	CAI-CAG	2.10	1.56	1.51
4	B	301	9BF	CAJ-CAK	2.30	1.56	1.50

All (3) bond angle outliers are listed below:

Mol	Chain	Res	Type	Atoms	Z	Observed($^{\circ}$)	Ideal($^{\circ}$)
4	B	301	9BF	CAA-CAB-CAC	-2.23	117.33	120.44
5	D	301	GOL	C3-C2-C1	2.11	119.77	111.63
5	D	301	GOL	O3-C3-C2	2.12	120.41	110.11

There are no chirality outliers.

There are no torsion outliers.

There are no ring outliers.

No monomer is involved in short contacts.

5.7 Other polymers [i](#)

There are no such residues in this entry.

5.8 Polymer linkage issues [i](#)

There are no chain breaks in this entry.

6 Fit of model and data [i](#)

6.1 Protein, DNA and RNA chains [i](#)

In the following table, the column labelled ‘#RSRZ> 2’ contains the number (and percentage) of RSRZ outliers, followed by percent RSRZ outliers for the chain as percentile scores relative to all X-ray entries and entries of similar resolution. The OWAB column contains the minimum, median, 95th percentile and maximum values of the occupancy-weighted average B-factor per residue. The column labelled ‘Q< 0.9’ lists the number of (and percentage) of residues with an average occupancy less than 0.9.

Mol	Chain	Analysed	<RSRZ>	#RSRZ>2	OWAB(Å ²)	Q<0.9
1	A	200/223 (89%)	-0.02	7 (3%) 44 49	18, 30, 51, 73	0
1	B	200/223 (89%)	0.16	14 (7%) 16 19	19, 29, 57, 99	0
1	C	198/223 (88%)	0.16	15 (7%) 14 16	19, 29, 58, 100	0
1	D	200/223 (89%)	0.20	11 (5%) 25 28	20, 34, 60, 73	0
All	All	798/892 (89%)	0.12	47 (5%) 22 25	18, 30, 58, 100	0

The worst 5 of 47 RSRZ outliers are listed below:

Mol	Chain	Res	Type	RSRZ
1	B	74	ILE	8.2
1	C	73	ARG	5.1
1	B	73	ARG	5.1
1	D	145	GLY	4.8
1	D	45	THR	4.7

6.2 Non-standard residues in protein, DNA, RNA chains [i](#)

There are no non-standard protein/DNA/RNA residues in this entry.

6.3 Carbohydrates [i](#)

There are no carbohydrates in this entry.

6.4 Ligands [i](#)

In the following table, the Atoms column lists the number of modelled atoms in the group and the number defined in the chemical component dictionary. The B-factors column lists the minimum, median, 95th percentile and maximum values of B factors of atoms in the group. The column labelled ‘Q< 0.9’ lists the number of atoms with occupancy less than 0.9.

Mol	Type	Chain	Res	Atoms	RSCC	RSR	B-factors(\AA^2)	Q<0.9
4	9BF	B	301	14/14	0.73	0.29	61,68,73,76	0
2	MG	A	301	1/1	0.94	0.08	26,26,26,26	0
5	GOL	D	301	6/6	0.94	0.08	23,31,33,34	0
3	CA	D	304	1/1	0.94	0.04	40,40,40,40	0
2	MG	D	302	1/1	0.94	0.07	31,31,31,31	0
3	CA	A	303	1/1	0.96	0.05	35,35,35,35	0
3	CA	C	303	1/1	0.97	0.04	29,29,29,29	0
2	MG	C	301	1/1	0.97	0.06	28,28,28,28	0
3	CA	D	303	1/1	0.98	0.04	29,29,29,29	0
3	CA	B	302	1/1	0.98	0.03	29,29,29,29	0
3	CA	B	303	1/1	0.99	0.05	23,23,23,23	0
3	CA	A	302	1/1	0.99	0.04	24,24,24,24	0
3	CA	C	302	1/1	0.99	0.05	25,25,25,25	0

6.5 Other polymers [i](#)

There are no such residues in this entry.