



# wwPDB X-ray Structure Validation Summary Report ⓘ

Jul 23, 2019 – 10:59 AM EDT

PDB ID : 6AC1  
Title : Rat Xanthine oxidoreductase, NADH bound form  
Authors : Okamoto, K.; Kawaguchi, Y.  
Deposited on : 2018-07-24  
Resolution : 1.77 Å(reported)

This is a wwPDB X-ray Structure Validation Summary Report for a publicly released PDB entry.

We welcome your comments at [validation@mail.wwpdb.org](mailto:validation@mail.wwpdb.org)

A user guide is available at

<https://www.wwpdb.org/validation/2017/XrayValidationReportHelp>

with specific help available everywhere you see the ⓘ symbol.

---

The following versions of software and data (see [references ⓘ](#)) were used in the production of this report:

MolProbity : 4.02b-467  
Mogul : 1.8.0 (224370), CSD as540be (2019)  
Xtriage (Phenix) : 1.13  
EDS : 2.4  
buster-report : 1.1.7 (2018)  
Percentile statistics : 20171227.v01 (using entries in the PDB archive December 27th 2017)  
Refmac : 5.8.0158  
CCP4 : 7.0 (Gargrove)  
Ideal geometry (proteins) : Engh & Huber (2001)  
Ideal geometry (DNA, RNA) : Parkinson et al. (1996)  
Validation Pipeline (wwPDB-VP) : 2.4

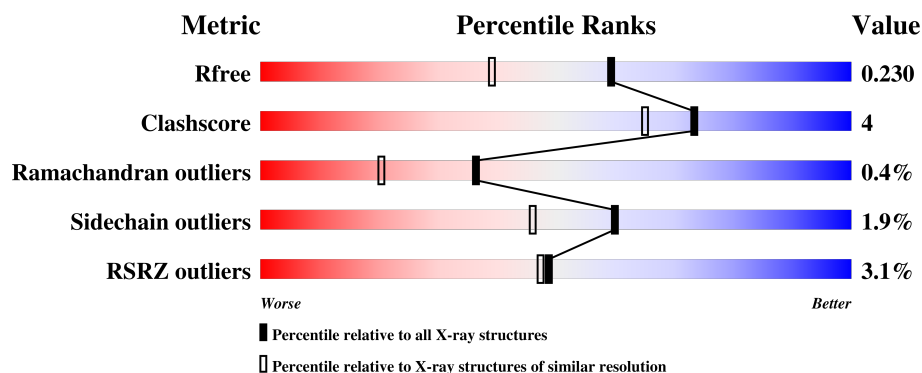
# 1 Overall quality at a glance

The following experimental techniques were used to determine the structure:

*X-RAY DIFFRACTION*

The reported resolution of this entry is 1.77 Å.

Percentile scores (ranging between 0-100) for global validation metrics of the entry are shown in the following graphic. The table shows the number of entries on which the scores are based.



Metric	Whole archive (#Entries)	Similar resolution (#Entries, resolution range(Å))
$R_{free}$	111664	7886 (1.80-1.76)
Clashscore	122126	8858 (1.80-1.76)
Ramachandran outliers	120053	8764 (1.80-1.76)
Sidechain outliers	120020	8763 (1.80-1.76)
RSRZ outliers	108989	7741 (1.80-1.76)

The table below summarises the geometric issues observed across the polymeric chains and their fit to the electron density. The red, orange, yellow and green segments on the lower bar indicate the fraction of residues that contain outliers for  $\geq 3$ , 2, 1 and 0 types of geometric quality criteria. A grey segment represents the fraction of residues that are not modelled. The numeric value for each fraction is indicated below the corresponding segment, with a dot representing fractions  $\leq 5\%$ . The upper red bar (where present) indicates the fraction of residues that have poor fit to the electron density. The numeric value is given above the bar.

Mol	Chain	Length	Quality of chain
1	A	1331	
1	B	1331	

The following table lists non-polymeric compounds, carbohydrate monomers and non-standard residues in protein, DNA, RNA chains that are outliers for geometric or electron-density-fit criteria:

Mol	Type	Chain	Res	Chirality	Geometry	Clashes	Electron density
2	URC	B	3003	-	X	-	-
4	FES	B	3001	-	-	X	-

## 2 Entry composition [i](#)

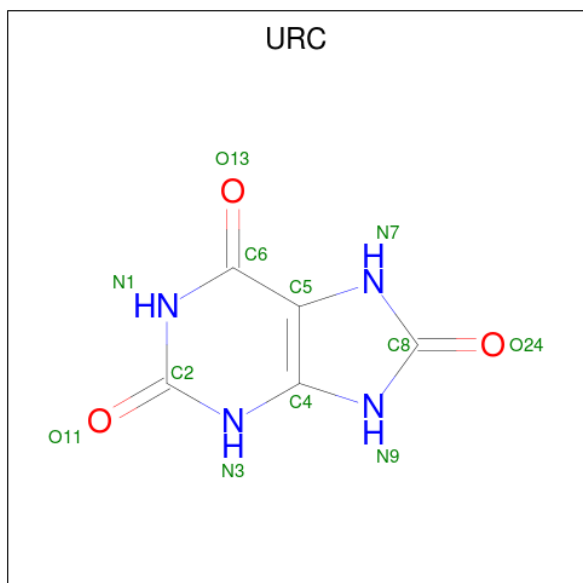
There are 7 unique types of molecules in this entry. The entry contains 21345 atoms, of which 0 are hydrogens and 0 are deuteriums.

In the tables below, the ZeroOcc column contains the number of atoms modelled with zero occupancy, the AltConf column contains the number of residues with at least one atom in alternate conformation and the Trace column contains the number of residues modelled with at most 2 atoms.

- Molecule 1 is a protein called Xanthine dehydrogenase/oxidase.

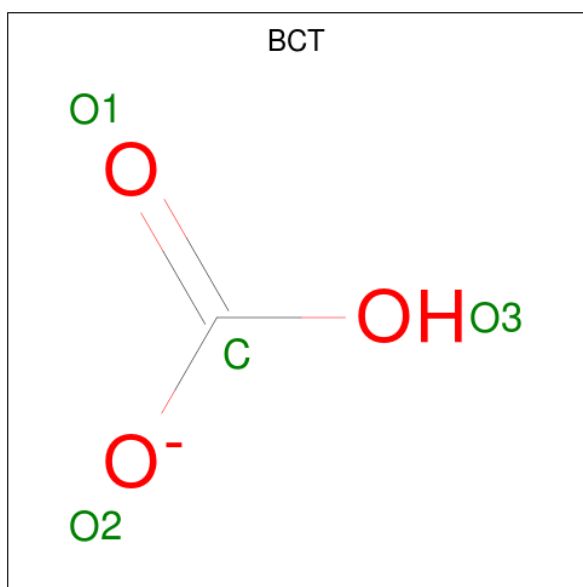
Mol	Chain	Residues	Atoms					ZeroOcc	AltConf	Trace
1	A	1297	Total	C	N	O	S	0	0	0
			10033	6359	1727	1882	65			
1	B	1291	Total	C	N	O	S	0	0	0
			9971	6320	1716	1871	64			

- Molecule 2 is URIC ACID (three-letter code: URC) (formula:  $C_5H_4N_4O_3$ ).



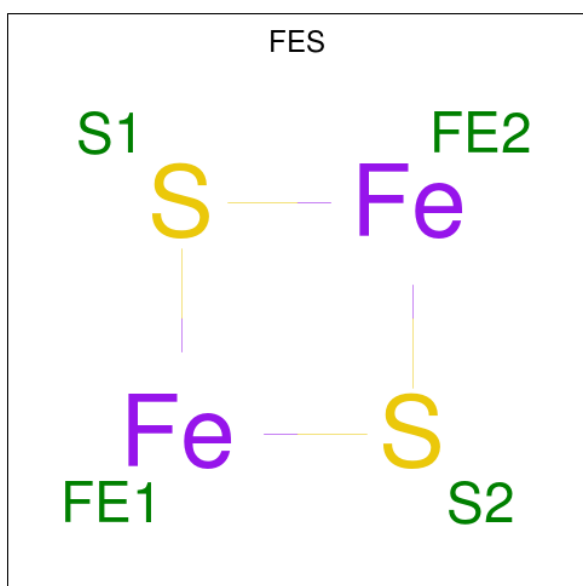
Mol	Chain	Residues	Atoms				ZeroOcc	AltConf
2	A	1	Total	C	N	O	0	0
			12	5	4	3		
2	B	1	Total	C	N	O	0	0
			12	5	4	3		

- Molecule 3 is BICARBONATE ION (three-letter code: BCT) (formula:  $CHO_3$ ).



Mol	Chain	Residues	Atoms			ZeroOcc	AltConf
3	A	1	Total	C	O	0	0
			4	1	3		
3	B	1	Total	C	O	0	0
			4	1	3		

- Molecule 4 is FE2/S2 (INORGANIC) CLUSTER (three-letter code: FES) (formula:  $\text{Fe}_2\text{S}_2$ ).



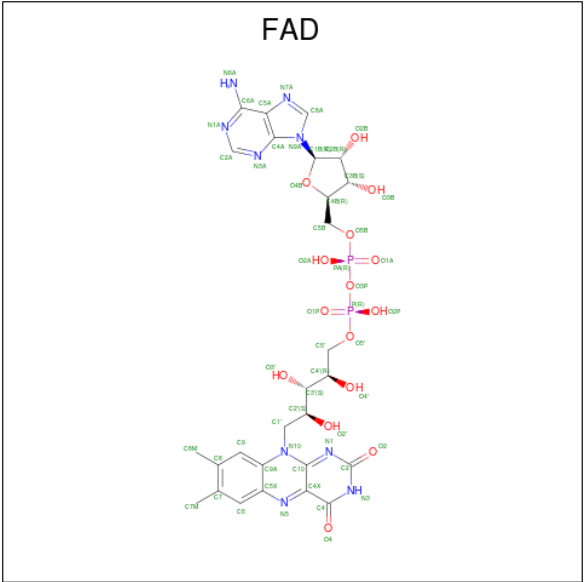
Mol	Chain	Residues	Atoms			ZeroOcc	AltConf
4	A	1	Total	Fe	S	0	0
			4	2	2		
4	A	1	Total	Fe	S	0	0
			4	2	2		

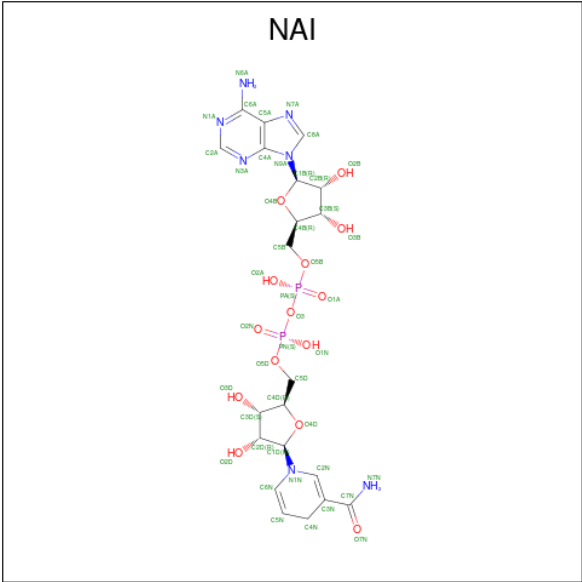
*Continued on next page...*

Continued from previous page...

Mol	Chain	Residues	Atoms			ZeroOcc	AltConf
4	B	1	Total	Fe	S	0	0
			4	2	2		
4	B	1	Total	Fe	S	0	0
			4	2	2		

- Molecule 5 is FLAVIN-ADENINE DINUCLEOTIDE (three-letter code: FAD) (formula: C<sub>27</sub>H<sub>33</sub>N<sub>9</sub>O<sub>15</sub>P<sub>2</sub>).





Mol	Chain	Residues	Atoms					ZeroOcc	AltConf
6	A	1	Total	C	N	O	P	0	0
			44	21	7	14	2		
6	B	1	Total	C	N	O	P	0	0
			44	21	7	14	2		

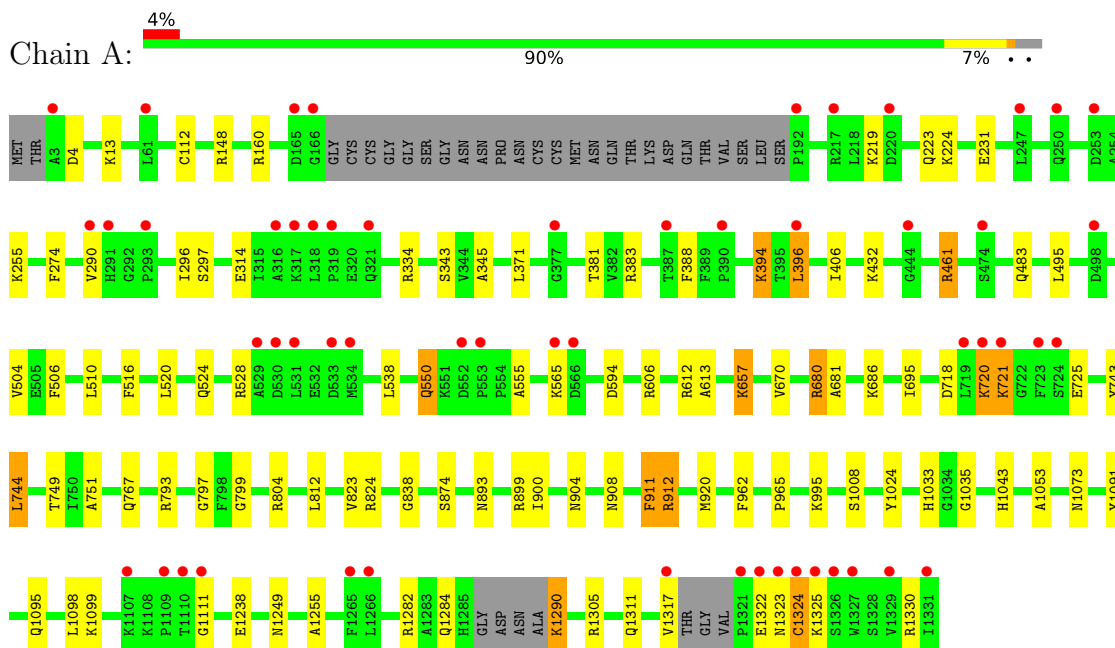
- Molecule 7 is water.

Mol	Chain	Residues	Atoms		ZeroOcc	AltConf
7	A	486	Total	O	0	0
			486	486		
7	B	613	Total	O	0	0
			613	613		

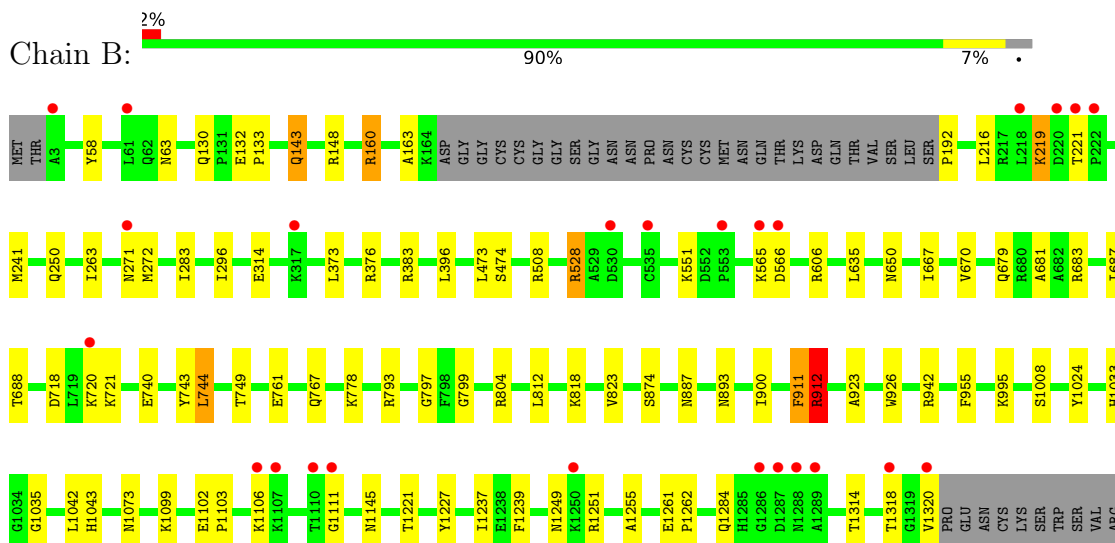
### 3 Residue-property plots [i](#)

These plots are drawn for all protein, RNA and DNA chains in the entry. The first graphic for a chain summarises the proportions of the various outlier classes displayed in the second graphic. The second graphic shows the sequence view annotated by issues in geometry and electron density. Residues are color-coded according to the number of geometric quality criteria for which they contain at least one outlier: green = 0, yellow = 1, orange = 2 and red = 3 or more. A red dot above a residue indicates a poor fit to the electron density ( $RSRZ > 2$ ). Stretches of 2 or more consecutive residues without any outlier are shown as a green connector. Residues present in the sample, but not in the model, are shown in grey.

#### • Molecule 1: Xanthine dehydrogenase/oxidase



#### • Molecule 1: Xanthine dehydrogenase/oxidase





ILE

## 4 Data and refinement statistics

Property	Value	Source
Space group	P 21 21 21	Depositor
Cell constants a, b, c, $\alpha$ , $\beta$ , $\gamma$	98.80Å 137.55Å 222.25Å 90.00° 90.00° 90.00°	Depositor
Resolution (Å)	32.19 – 1.77 32.17 – 1.77	Depositor EDS
% Data completeness (in resolution range)	99.3 (32.19-1.77) 99.3 (32.17-1.77)	Depositor EDS
$R_{merge}$	0.13	Depositor
$R_{sym}$	(Not available)	Depositor
$\langle I/\sigma(I) \rangle$ <sup>1</sup>	1.44 (at 1.77Å)	Xtriage
Refinement program	REFMAC 5.8.0222	Depositor
R, $R_{free}$	0.188 , 0.222 0.196 , 0.230	Depositor DCC
$R_{free}$ test set	14638 reflections (5.00%)	wwPDB-VP
Wilson B-factor (Å <sup>2</sup> )	21.2	Xtriage
Anisotropy	0.030	Xtriage
Bulk solvent $k_{sol}$ (e/Å <sup>3</sup> ), $B_{sol}$ (Å <sup>2</sup> )	0.37 , 47.8	EDS
L-test for twinning <sup>2</sup>	$\langle  L  \rangle = 0.50$ , $\langle L^2 \rangle = 0.33$	Xtriage
Estimated twinning fraction	No twinning to report.	Xtriage
$F_o, F_c$ correlation	0.96	EDS
Total number of atoms	21345	wwPDB-VP
Average B, all atoms (Å <sup>2</sup> )	25.0	wwPDB-VP

Xtriage's analysis on translational NCS is as follows: *The largest off-origin peak in the Patterson function is 2.51% of the height of the origin peak. No significant pseudotranslation is detected.*

<sup>1</sup>Intensities estimated from amplitudes.

<sup>2</sup>Theoretical values of  $\langle |L| \rangle$ ,  $\langle L^2 \rangle$  for acentric reflections are 0.5, 0.333 respectively for untwinned datasets, and 0.375, 0.2 for perfectly twinned datasets.

## 5 Model quality [i](#)

### 5.1 Standard geometry [i](#)

Bond lengths and bond angles in the following residue types are not validated in this section: BCT, NAI, FES, FAD, URC

The Z score for a bond length (or angle) is the number of standard deviations the observed value is removed from the expected value. A bond length (or angle) with  $|Z| > 5$  is considered an outlier worth inspection. RMSZ is the root-mean-square of all Z scores of the bond lengths (or angles).

Mol	Chain	Bond lengths		Bond angles	
		RMSZ	$\# Z  > 5$	RMSZ	$\# Z  > 5$
1	A	0.60	0/10244	0.73	2/13857 (0.0%)
1	B	0.64	2/10181 (0.0%)	0.79	5/13777 (0.0%)
All	All	0.62	2/20425 (0.0%)	0.76	7/27634 (0.0%)

Chiral center outliers are detected by calculating the chiral volume of a chiral center and verifying if the center is modelled as a planar moiety or with the opposite hand. A planarity outlier is detected by checking planarity of atoms in a peptide group, atoms in a mainchain group or atoms of a sidechain that are expected to be planar.

Mol	Chain	#Chirality outliers	#Planarity outliers
1	A	0	10
1	B	0	9
All	All	0	19

All (2) bond length outliers are listed below:

Mol	Chain	Res	Type	Atoms	Z	Observed(Å)	Ideal(Å)
1	B	740	GLU	CD-OE1	5.76	1.31	1.25
1	B	761	GLU	CD-OE1	5.37	1.31	1.25

The worst 5 of 7 bond angle outliers are listed below:

Mol	Chain	Res	Type	Atoms	Z	Observed(°)	Ideal(°)
1	B	793	ARG	NE-CZ-NH1	19.54	130.07	120.30
1	B	793	ARG	NE-CZ-NH2	-19.28	110.66	120.30
1	A	793	ARG	NE-CZ-NH2	-7.39	116.60	120.30
1	A	606	ARG	NE-CZ-NH1	-5.68	117.46	120.30
1	B	528	ARG	NE-CZ-NH2	-5.67	117.47	120.30

There are no chirality outliers.

5 of 19 planarity outliers are listed below:

Mol	Chain	Res	Type	Group
1	A	148	ARG	Sidechain
1	A	160	ARG	Sidechain
1	A	334	ARG	Sidechain
1	A	461	ARG	Sidechain
1	A	528	ARG	Sidechain

## 5.2 Too-close contacts [i](#)

In the following table, the Non-H and H(model) columns list the number of non-hydrogen atoms and hydrogen atoms in the chain respectively. The H(added) column lists the number of hydrogen atoms added and optimized by MolProbity. The Clashes column lists the number of clashes within the asymmetric unit, whereas Symm-Clashes lists symmetry related clashes.

Mol	Chain	Non-H	H(model)	H(added)	Clashes	Symm-Clashes
1	A	10033	0	10041	74	0
1	B	9971	0	9982	69	0
2	A	12	0	4	0	0
2	B	12	0	4	0	0
3	A	4	0	0	0	0
3	B	4	0	0	0	0
4	A	8	0	0	1	0
4	B	8	0	0	2	0
5	A	53	0	31	3	0
5	B	53	0	31	2	0
6	A	44	0	27	2	0
6	B	44	0	27	1	0
7	A	486	0	0	0	0
7	B	613	0	0	4	0
All	All	21345	0	20147	144	0

The all-atom clashscore is defined as the number of clashes found per 1000 atoms (including hydrogen atoms). The all-atom clashscore for this structure is 4.

The worst 5 of 144 close contacts within the same asymmetric unit are listed below, sorted by their clash magnitude.

Atom-1	Atom-2	Interatomic distance (Å)	Clash overlap (Å)
1:B:812:LEU:HB2	7:B:3633:HOH:O	0.92	1.07
1:B:749:THR:HG22	1:B:812:LEU:HD23	1.39	1.04
1:B:718:ASP:H	1:B:893:ASN:HD22	1.16	0.93

*Continued on next page...*

*Continued from previous page...*

Atom-1	Atom-2	Interatomic distance (Å)	Clash overlap (Å)
1:B:1318:THR:HG21	1:B:1320:VAL:HG22	1.55	0.86
1:A:720:LYS:HA	1:A:720:LYS:CE	2.04	0.85

There are no symmetry-related clashes.

## 5.3 Torsion angles [i](#)

### 5.3.1 Protein backbone [i](#)

In the following table, the Percentiles column shows the percent Ramachandran outliers of the chain as a percentile score with respect to all X-ray entries followed by that with respect to entries of similar resolution.

The Analysed column shows the number of residues for which the backbone conformation was analysed, and the total number of residues.

Mol	Chain	Analysed	Favoured	Allowed	Outliers	Percentiles	
1	A	1289/1331 (97%)	1243 (96%)	40 (3%)	6 (0%)	31	15
1	B	1287/1331 (97%)	1253 (97%)	29 (2%)	5 (0%)	36	20
All	All	2576/2662 (97%)	2496 (97%)	69 (3%)	11 (0%)	36	20

5 of 11 Ramachandran outliers are listed below:

Mol	Chain	Res	Type
1	A	1008	SER
1	A	1324	CYS
1	B	1008	SER
1	B	912	ARG
1	A	4	ASP

### 5.3.2 Protein sidechains [i](#)

In the following table, the Percentiles column shows the percent sidechain outliers of the chain as a percentile score with respect to all X-ray entries followed by that with respect to entries of similar resolution.

The Analysed column shows the number of residues for which the sidechain conformation was analysed, and the total number of residues.

Mol	Chain	Analysed	Rotameric	Outliers	Percentiles	
1	A	1097/1124 (98%)	1071 (98%)	26 (2%)	52	35
1	B	1089/1124 (97%)	1074 (99%)	15 (1%)	69	59
All	All	2186/2248 (97%)	2145 (98%)	41 (2%)	60	46

5 of 41 residues with a non-rotameric sidechain are listed below:

Mol	Chain	Res	Type
1	A	743	TYR
1	A	1099	LYS
1	B	911	PHE
1	A	744	LEU
1	A	899	ARG

Some sidechains can be flipped to improve hydrogen bonding and reduce clashes. 5 of 32 such sidechains are listed below:

Mol	Chain	Res	Type
1	A	1194	GLN
1	A	1311	GLN
1	B	1073	ASN
1	A	1285	HIS
1	B	62	GLN

### 5.3.3 RNA ⓘ

There are no RNA molecules in this entry.

## 5.4 Non-standard residues in protein, DNA, RNA chains ⓘ

There are no non-standard protein/DNA/RNA residues in this entry.

## 5.5 Carbohydrates ⓘ

There are no carbohydrates in this entry.

## 5.6 Ligand geometry ⓘ

12 ligands are modelled in this entry.

In the following table, the Counts columns list the number of bonds (or angles) for which Mogul statistics could be retrieved, the number of bonds (or angles) that are observed in the model and the number of bonds (or angles) that are defined in the Chemical Component Dictionary. The Link column lists molecule types, if any, to which the group is linked. The Z score for a bond length (or angle) is the number of standard deviations the observed value is removed from the expected value. A bond length (or angle) with  $|Z| > 2$  is considered an outlier worth inspection. RMSZ is the root-mean-square of all Z scores of the bond lengths (or angles).

Mol	Type	Chain	Res	Link	Bond lengths			Bond angles		
					Counts	RMSZ	$\# Z  > 2$	Counts	RMSZ	$\# Z  > 2$
2	URC	A	1501	-	13,13,13	4.16	5 (38%)	13,19,19	4.21	7 (53%)
3	BCT	A	1502	-	0,3,3	0.00	-	0,3,3	0.00	-
4	FES	A	1503	1	0,4,4	0.00	-	-	-	-
4	FES	A	1504	1	0,4,4	0.00	-	-	-	-
5	FAD	A	1505	-	50,58,58	1.81	8 (16%)	58,89,89	2.43	17 (29%)
6	NAI	A	1506	-	41,48,48	1.21	5 (12%)	45,73,73	1.29	5 (11%)
4	FES	B	3001	1	0,4,4	0.00	-	-	-	-
4	FES	B	3002	1	0,4,4	0.00	-	-	-	-
2	URC	B	3003	-	13,13,13	4.22	6 (46%)	13,19,19	5.32	8 (61%)
3	BCT	B	3004	-	0,3,3	0.00	-	0,3,3	0.00	-
5	FAD	B	3005	-	50,58,58	1.85	9 (18%)	58,89,89	2.33	11 (18%)
6	NAI	B	3006	-	41,48,48	1.07	2 (4%)	45,73,73	1.12	3 (6%)

In the following table, the Chirals column lists the number of chiral outliers, the number of chiral centers analysed, the number of these observed in the model and the number defined in the Chemical Component Dictionary. Similar counts are reported in the Torsion and Rings columns. '-' means no outliers of that kind were identified.

Mol	Type	Chain	Res	Link	Chirals	Torsions	Rings
2	URC	A	1501	-	-	-	0/2/2/2
4	FES	A	1503	1	-	-	0/1/1/1
4	FES	A	1504	1	-	-	0/1/1/1
5	FAD	A	1505	-	-	7/30/50/50	0/6/6/6
6	NAI	A	1506	-	-	4/25/72/72	0/5/5/5
4	FES	B	3001	1	-	-	0/1/1/1
4	FES	B	3002	1	-	-	0/1/1/1
2	URC	B	3003	-	-	-	0/2/2/2
5	FAD	B	3005	-	-	3/30/50/50	0/6/6/6
6	NAI	B	3006	-	-	4/25/72/72	0/5/5/5

The worst 5 of 35 bond length outliers are listed below:

Mol	Chain	Res	Type	Atoms	Z	Observed(Å)	Ideal(Å)
2	B	3003	URC	C4-N3	-10.41	1.34	1.46
2	A	1501	URC	C4-N3	-9.88	1.35	1.46
5	A	1505	FAD	C4X-C10	9.37	1.48	1.38
5	B	3005	FAD	C4X-C10	8.09	1.47	1.38
2	A	1501	URC	C4-N9	-7.97	1.35	1.44

The worst 5 of 51 bond angle outliers are listed below:

Mol	Chain	Res	Type	Atoms	Z	Observed(°)	Ideal(°)
2	B	3003	URC	C5-C4-N9	11.65	108.03	102.64
5	A	1505	FAD	C4-N3-C2	11.34	124.71	115.14
5	B	3005	FAD	C4-N3-C2	11.31	124.69	115.14
2	B	3003	URC	C4-N9-C8	-10.79	105.56	112.89
2	A	1501	URC	C4-N9-C8	-8.44	107.16	112.89

There are no chirality outliers.

5 of 18 torsion outliers are listed below:

Mol	Chain	Res	Type	Atoms
5	B	3005	FAD	N10-C1'-C2'-O2'
5	A	1505	FAD	C2'-C1'-N10-C10
5	A	1505	FAD	N10-C1'-C2'-O2'
5	A	1505	FAD	N10-C1'-C2'-C3'
6	A	1506	NAI	C2D-C1D-N1N-C6N

There are no ring outliers.

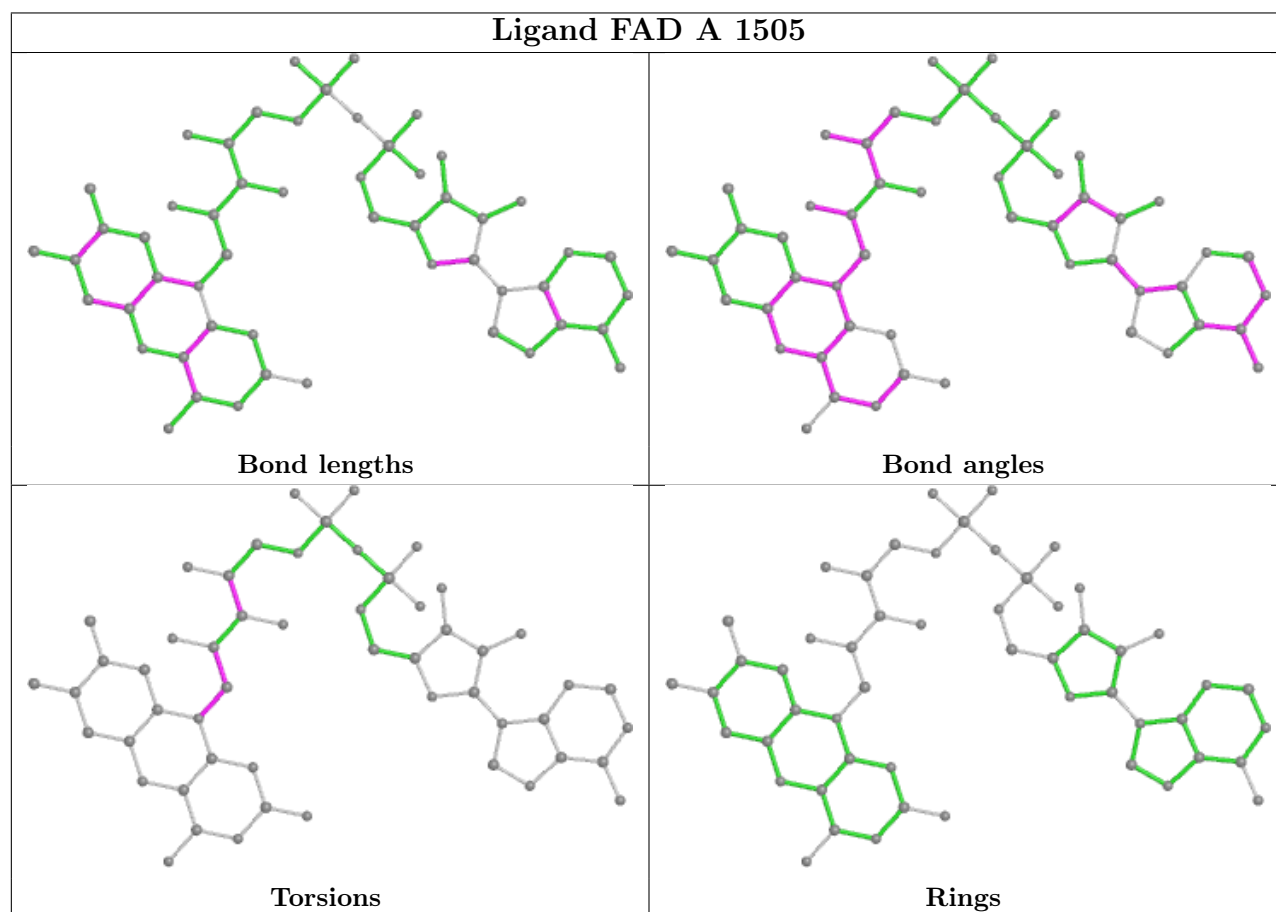
6 monomers are involved in 8 short contacts:

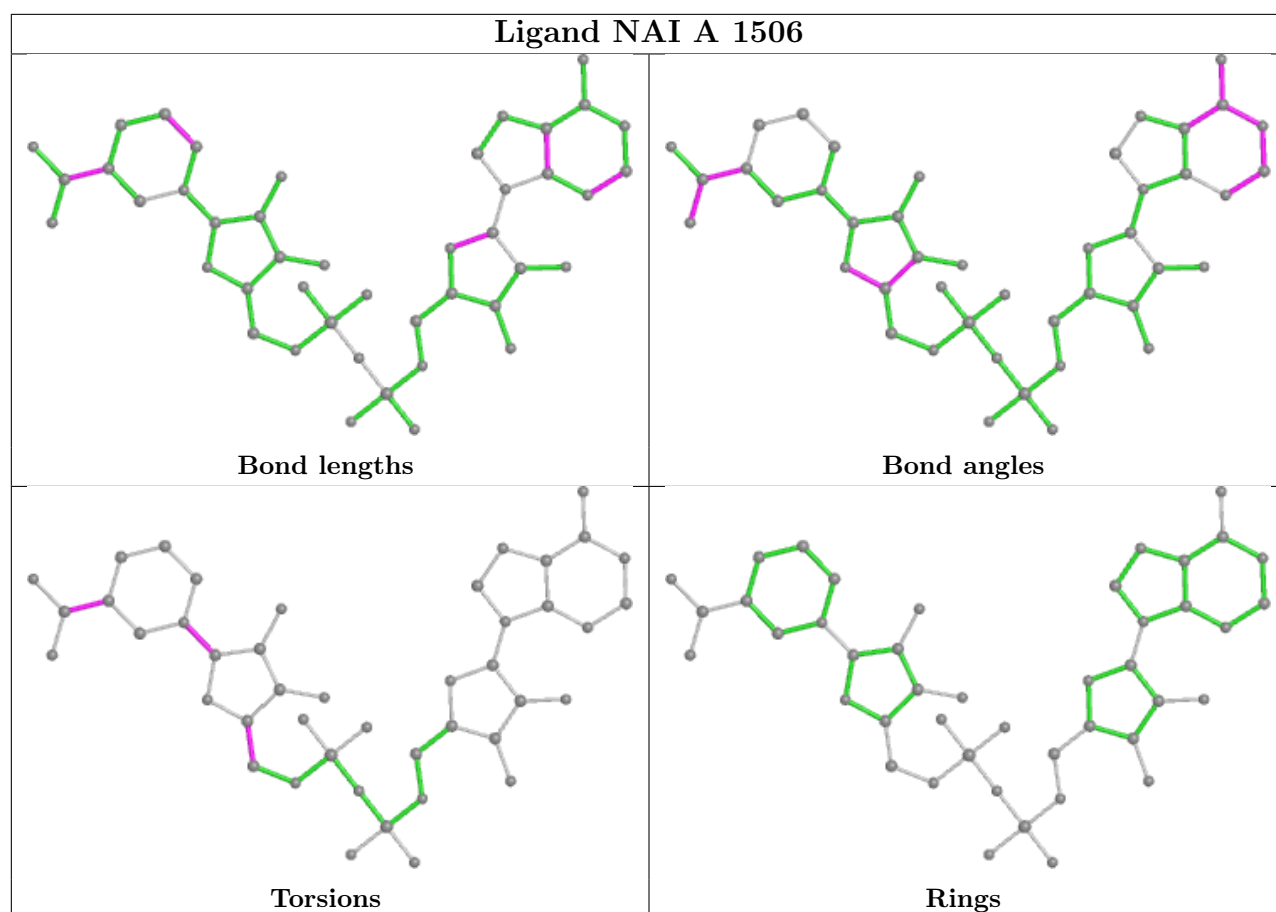
Mol	Chain	Res	Type	Clashes	Symm-Clashes
4	A	1504	FES	1	0
5	A	1505	FAD	3	0
6	A	1506	NAI	2	0
4	B	3001	FES	2	0
5	B	3005	FAD	2	0
6	B	3006	NAI	1	0

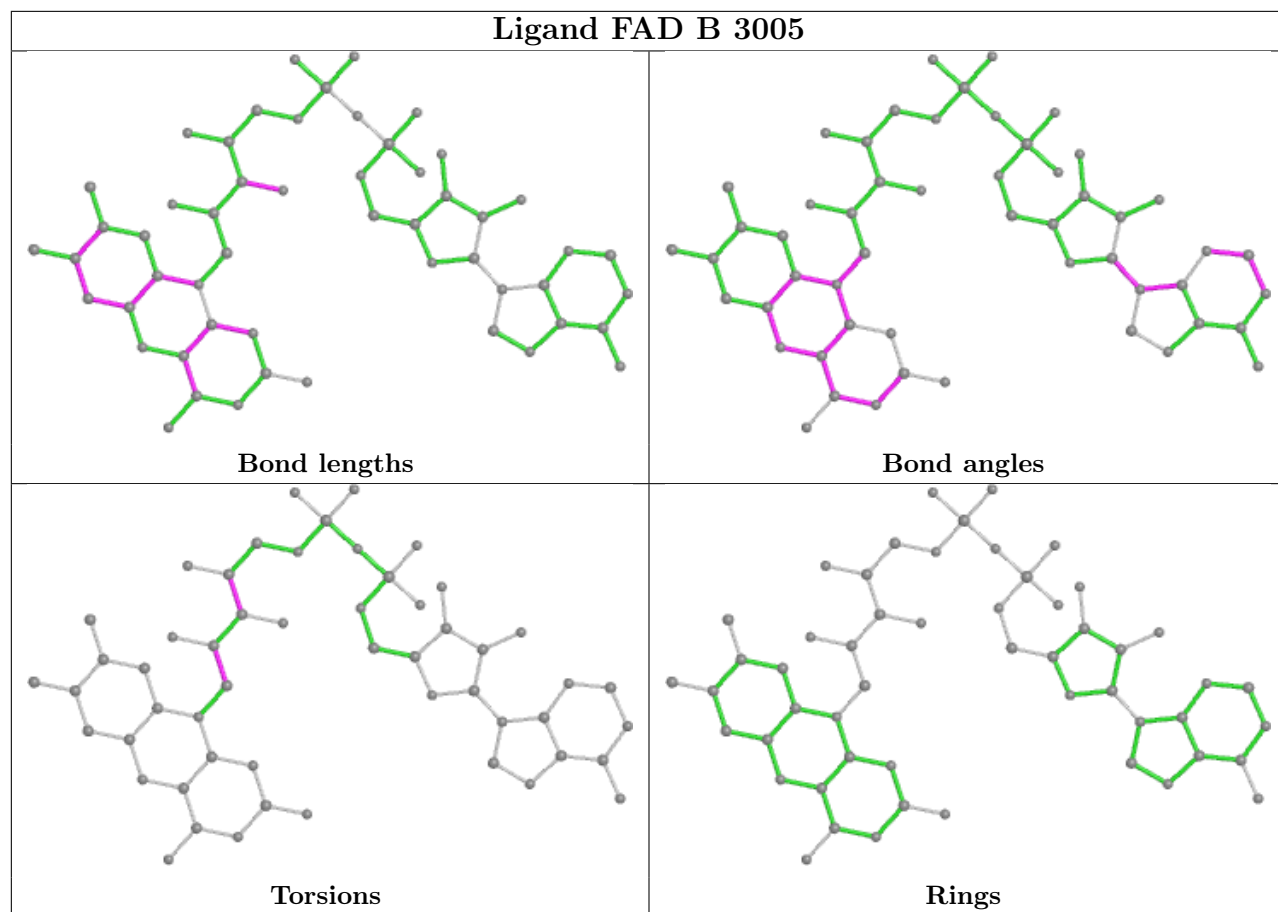
The following is a two-dimensional graphical depiction of Mogul quality analysis of bond lengths, bond angles, torsion angles, and ring geometry for all instances of the Ligand of Interest. In addition, ligands with molecular weight > 250 and outliers as shown on the validation Tables will also be included. For torsion angles, if less than 5% of the Mogul distribution of torsion angles is within 10 degrees of the torsion angle in question, then that torsion angle is considered an outlier. Any bond that is central to one or more torsion angles identified as an outlier by Mogul will be

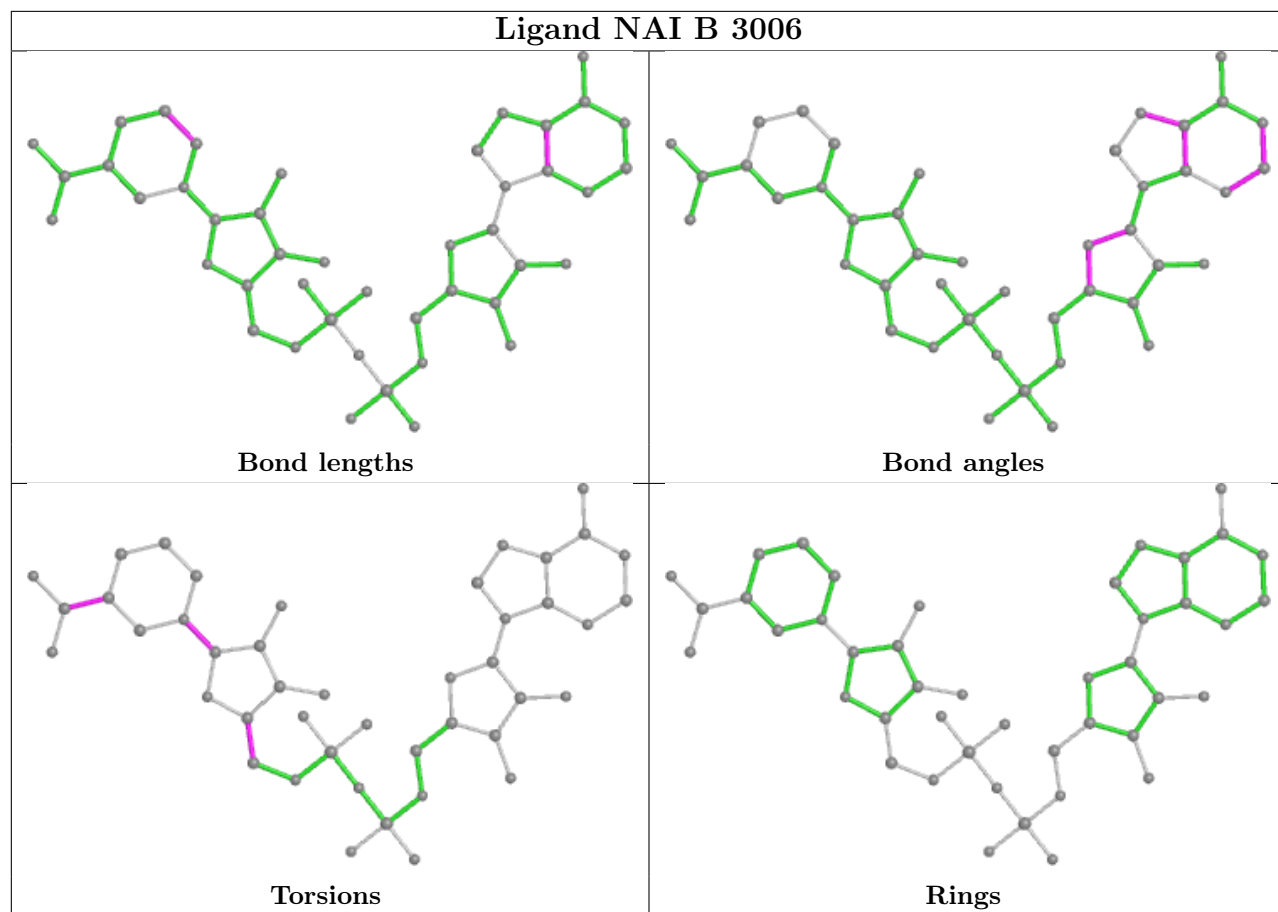


highlighted in the graph. For rings, the root-mean-square deviation (RMSD) between the ring in question and similar rings identified by Mogul is calculated over all ring torsion angles. If the average RMSD is greater than 60 degrees and the minimal RMSD between the ring in question and any Mogul-identified rings is also greater than 60 degrees, then that ring is considered an outlier. The outliers are highlighted in purple. The color gray indicates Mogul did not find sufficient equivalents in the CSD to analyse the geometry.









## 5.7 Other polymers [i](#)

There are no such residues in this entry.

## 5.8 Polymer linkage issues [i](#)

There are no chain breaks in this entry.

## 6 Fit of model and data [i](#)

### 6.1 Protein, DNA and RNA chains [i](#)

In the following table, the column labelled ‘#RSRZ > 2’ contains the number (and percentage) of RSRZ outliers, followed by percent RSRZ outliers for the chain as percentile scores relative to all X-ray entries and entries of similar resolution. The OWAB column contains the minimum, median, 95<sup>th</sup> percentile and maximum values of the occupancy-weighted average B-factor per residue. The column labelled ‘Q < 0.9’ lists the number of (and percentage) of residues with an average occupancy less than 0.9.

Mol	Chain	Analysed	<RSRZ>	#RSRZ>2	OWAB(Å <sup>2</sup> )	Q<0.9
1	A	1297/1331 (97%)	0.07	55 (4%) 36 34	15, 25, 49, 88	0
1	B	1291/1331 (96%)	-0.09	25 (1%) 66 66	14, 21, 40, 73	0
All	All	2588/2662 (97%)	-0.01	80 (3%) 49 47	14, 23, 46, 88	0

The worst 5 of 80 RSRZ outliers are listed below:

Mol	Chain	Res	Type	RSRZ
1	B	1289	ALA	8.3
1	A	1324	CYS	8.1
1	A	1323	ASN	7.4
1	A	1325	LYS	6.9
1	A	1322	GLU	5.3

### 6.2 Non-standard residues in protein, DNA, RNA chains [i](#)

There are no non-standard protein/DNA/RNA residues in this entry.

### 6.3 Carbohydrates [i](#)

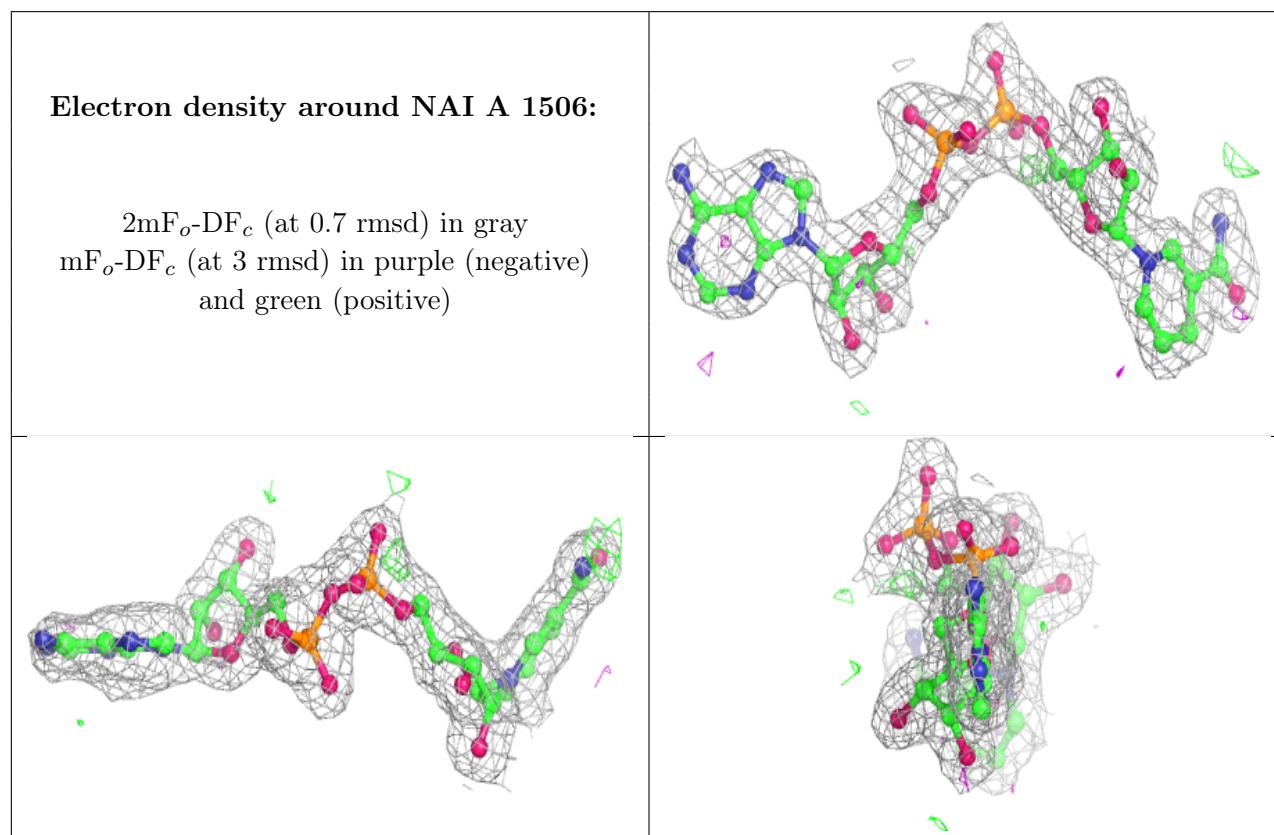
There are no carbohydrates in this entry.

### 6.4 Ligands [i](#)

In the following table, the Atoms column lists the number of modelled atoms in the group and the number defined in the chemical component dictionary. The B-factors column lists the minimum, median, 95<sup>th</sup> percentile and maximum values of B factors of atoms in the group. The column labelled ‘Q < 0.9’ lists the number of atoms with occupancy less than 0.9.

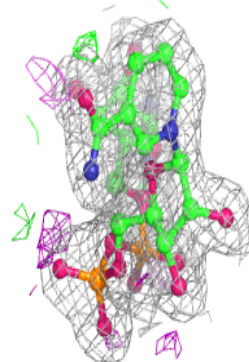
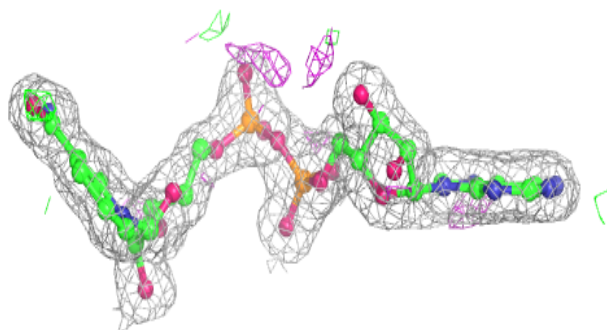
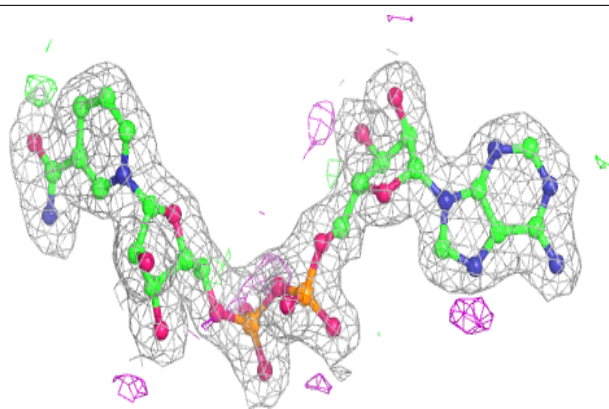
Mol	Type	Chain	Res	Atoms	RSCC	RSR	B-factors( $\text{\AA}^2$ )	Q<0.9
6	NAI	A	1506	44/44	0.94	0.10	26,33,41,47	0
6	NAI	B	3006	44/44	0.96	0.09	19,23,26,32	0
2	URC	A	1501	12/12	0.97	0.07	18,20,22,23	0
5	FAD	A	1505	53/53	0.97	0.08	21,24,29,32	0
3	BCT	A	1502	4/4	0.98	0.07	22,24,25,27	0
4	FES	B	3001	4/4	0.98	0.05	25,28,31,33	0
4	FES	A	1504	4/4	0.98	0.04	26,29,32,32	0
5	FAD	B	3005	53/53	0.98	0.08	16,18,20,21	0
3	BCT	B	3004	4/4	0.99	0.08	18,19,21,22	0
2	URC	B	3003	12/12	0.99	0.06	17,19,21,21	0
4	FES	A	1503	4/4	1.00	0.05	18,18,18,18	0
4	FES	B	3002	4/4	1.00	0.04	16,16,16,17	0

The following is a graphical depiction of the model fit to experimental electron density of all instances of the Ligand of Interest. In addition, ligands with molecular weight > 250 and outliers as shown on the geometry validation Tables will also be included. Each fit is shown from different orientation to approximate a three-dimensional view.

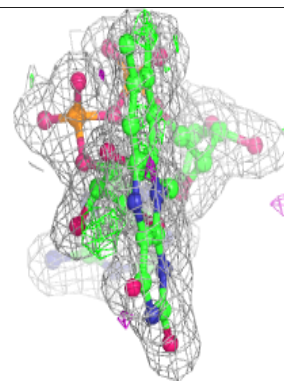
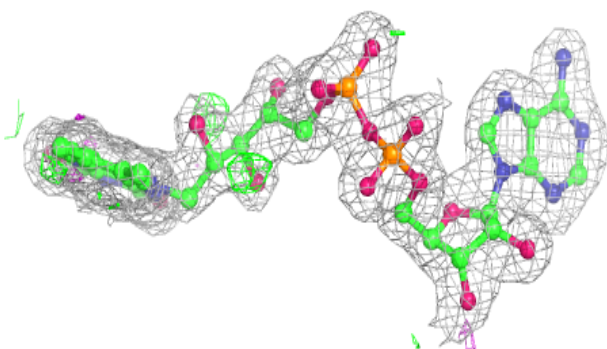
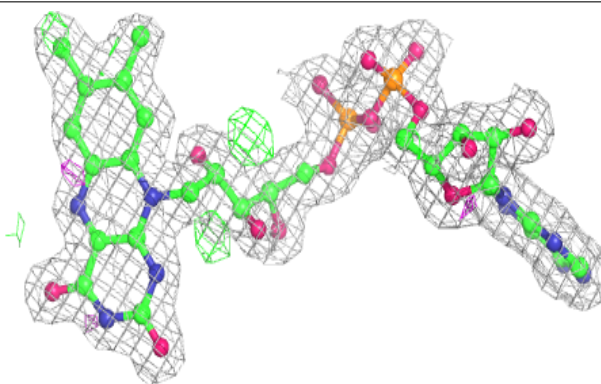


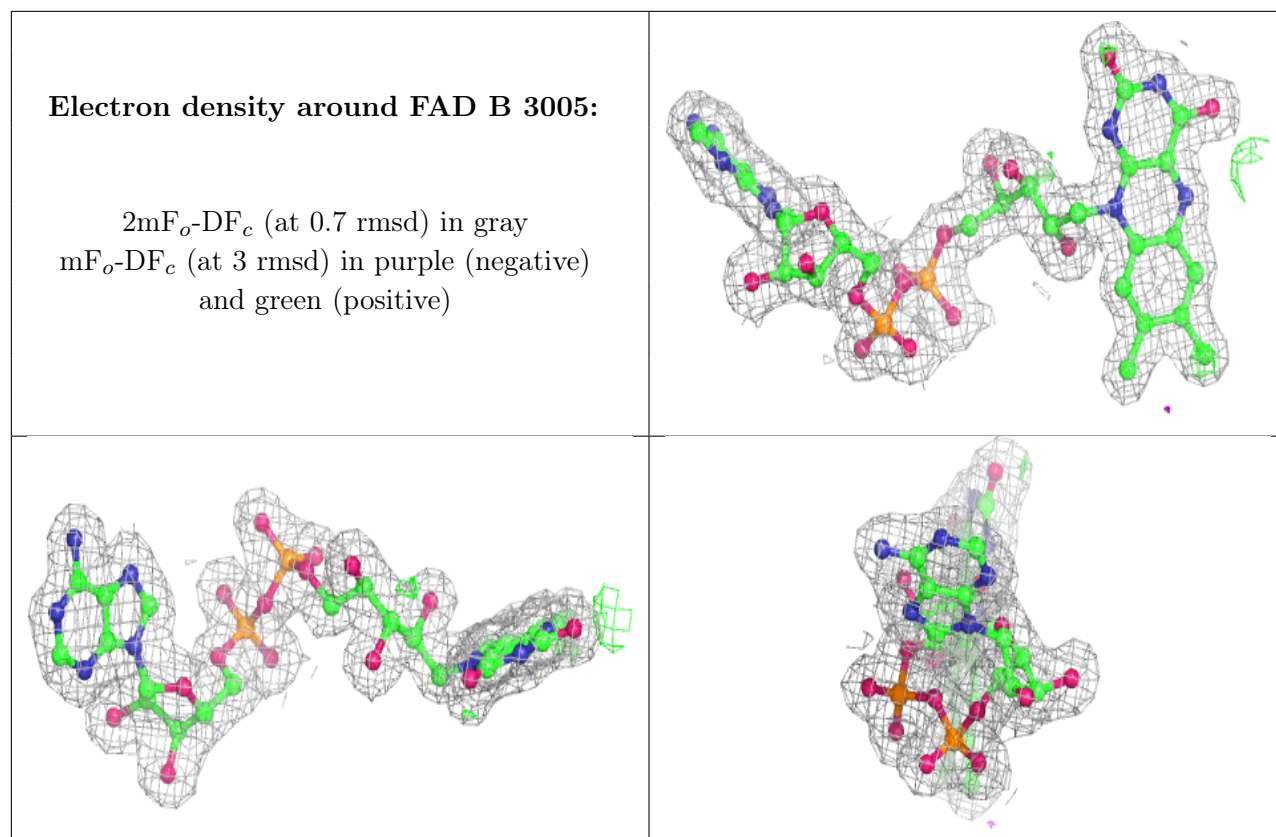
**Electron density around NAI B 3006:**

$2mF_o-DF_c$  (at 0.7 rmsd) in gray  
 $mF_o-DF_c$  (at 3 rmsd) in purple (negative)  
and green (positive)

**Electron density around FAD A 1505:**

$2mF_o-DF_c$  (at 0.7 rmsd) in gray  
 $mF_o-DF_c$  (at 3 rmsd) in purple (negative)  
and green (positive)





## 6.5 Other polymers [i](#)

There are no such residues in this entry.