



Full wwPDB X-ray Structure Validation Report ⓘ

Mar 11, 2019 – 10:49 AM EDT

PDB ID : 6AIK
Title : Cab2 mutant H337A complex with phosphopantothenoyl-CMP
Authors : Zheng, P.; Zhu, Z.
Deposited on : 2018-08-24
Resolution : 1.83 Å(reported)

This is a Full wwPDB X-ray Structure Validation Report for a publicly released PDB entry.

We welcome your comments at validation@mail.wwpdb.org

A user guide is available at

<https://www.wwpdb.org/validation/2017/XrayValidationReportHelp>

with specific help available everywhere you see the ⓘ symbol.

The following versions of software and data (see [references ⓘ](#)) were used in the production of this report:

MolProbity : 4.02b-467
Mogul : 1.7.3 (157068), CSD as539be (2018)
Xtriage (Phenix) : 1.13
EDS : rb-20031633
Percentile statistics : 20171227.v01 (using entries in the PDB archive December 27th 2017)
Refmac : 5.8.0158
CCP4 : 7.0 (Gargrove)
Ideal geometry (proteins) : Engh & Huber (2001)
Ideal geometry (DNA, RNA) : Parkinson et al. (1996)
Validation Pipeline (wwPDB-VP) : rb-20031633

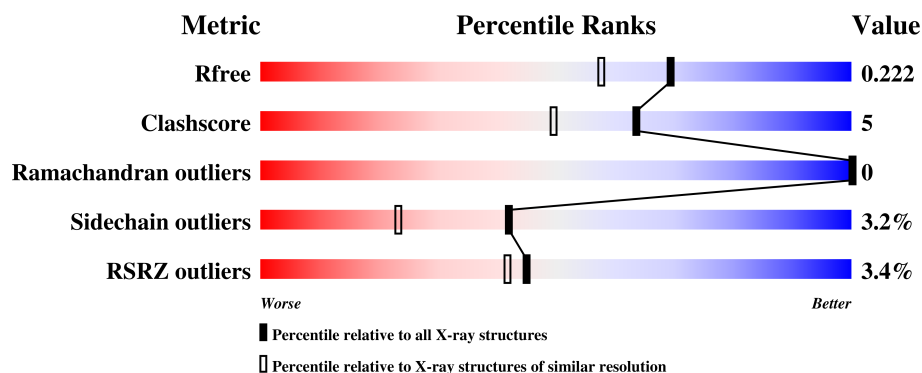
1 Overall quality at a glance

The following experimental techniques were used to determine the structure:

X-RAY DIFFRACTION

The reported resolution of this entry is 1.83 Å.

Percentile scores (ranging between 0-100) for global validation metrics of the entry are shown in the following graphic. The table shows the number of entries on which the scores are based.



Metric	Whole archive (#Entries)	Similar resolution (#Entries, resolution range(Å))
R_{free}	111664	3313 (1.86-1.82)
Clashscore	122126	3530 (1.86-1.82)
Ramachandran outliers	120053	3495 (1.86-1.82)
Sidechain outliers	120020	3496 (1.86-1.82)
RSRZ outliers	108989	3265 (1.86-1.82)

The table below summarises the geometric issues observed across the polymeric chains and their fit to the electron density. The red, orange, yellow and green segments on the lower bar indicate the fraction of residues that contain outliers for ≥ 3 , 2, 1 and 0 types of geometric quality criteria. A grey segment represents the fraction of residues that are not modelled. The numeric value for each fraction is indicated below the corresponding segment, with a dot representing fractions $\leq 5\%$. The upper red bar (where present) indicates the fraction of residues that have poor fit to the electron density. The numeric value is given above the bar.

Mol	Chain	Length	Quality of chain
1	A	371	<div> <div>3%</div> <div> <div></div> <div>76%</div> <div>6% •</div> <div>16%</div> </div> </div>
1	B	371	<div> <div>2%</div> <div> <div></div> <div>74%</div> <div>8% •</div> <div>17%</div> </div> </div>

2 Entry composition

There are 3 unique types of molecules in this entry. The entry contains 5631 atoms, of which 0 are hydrogens and 0 are deuteriums.

In the tables below, the ZeroOcc column contains the number of atoms modelled with zero occupancy, the AltConf column contains the number of residues with at least one atom in alternate conformation and the Trace column contains the number of residues modelled with at most 2 atoms.

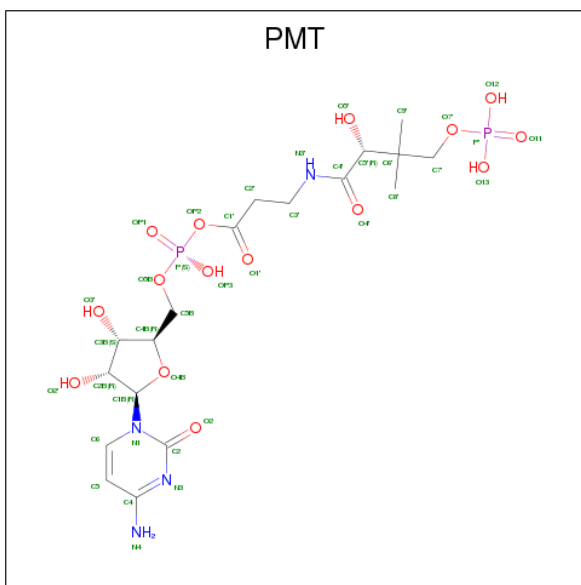
- Molecule 1 is a protein called Phosphopantothenate--cysteine ligase CAB2.

Mol	Chain	Residues	Atoms					ZeroOcc	AltConf	Trace
1	A	310	Total	C	N	O	S	0	0	0
			2529	1628	425	470	6			
1	B	308	Total	C	N	O	S	0	0	0
			2513	1619	423	465	6			

There are 14 discrepancies between the modelled and reference sequences:

Chain	Residue	Modelled	Actual	Comment	Reference
A	-5	HIS	-	expression tag	UNP P40506
A	-4	HIS	-	expression tag	UNP P40506
A	-3	HIS	-	expression tag	UNP P40506
A	-2	HIS	-	expression tag	UNP P40506
A	-1	HIS	-	expression tag	UNP P40506
A	0	HIS	-	expression tag	UNP P40506
A	337	ALA	HIS	engineered mutation	UNP P40506
B	-5	HIS	-	expression tag	UNP P40506
B	-4	HIS	-	expression tag	UNP P40506
B	-3	HIS	-	expression tag	UNP P40506
B	-2	HIS	-	expression tag	UNP P40506
B	-1	HIS	-	expression tag	UNP P40506
B	0	HIS	-	expression tag	UNP P40506
B	337	ALA	HIS	engineered mutation	UNP P40506

- Molecule 2 is PHOSPHORIC ACID MONO-[3-(3-{[5-(4-AMINO-2-OXO-2H-PYRIMIDIN-1-YL)-3,4-DIHYDROXY-TETRAHYDRO-FURAN-2-YLMETHOXY]-HYDROXY-PHOSPHORYLOXY}-3-OXO-PROPYLCARBAMOYL)-3-HYDROXY-2,2-DIMETHYL-PROPYL] ESTER (three-letter code: PMT) (formula: C₁₈H₃₀N₄O₁₅P₂).

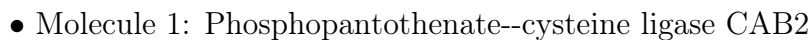


Mol	Chain	Residues	Atoms					ZeroOcc	AltConf
2	A	1	Total 39	C 18	N 4	O 15	P 2	0	0
2	B	1	Total 39	C 18	N 4	O 15	P 2	0	0

- Molecule 3 is water.

Mol	Chain	Residues	Atoms	ZeroOcc	AltConf
3	A	266	Total O 266 266	0	0
3	B	245	Total O 245 245	0	0

- Molecule 1: Phosphopantothenate--cysteine ligase CAB2



4 Data and refinement statistics

Property	Value	Source
Space group	P 1 21 1	Depositor
Cell constants a, b, c, α , β , γ	51.76Å 112.51Å 55.83Å 90.00° 91.56° 90.00°	Depositor
Resolution (Å)	56.26 – 1.83 47.01 – 1.83	Depositor EDS
% Data completeness (in resolution range)	97.8 (56.26-1.83) 97.8 (47.01-1.83)	Depositor EDS
R_{merge}	0.08	Depositor
R_{sym}	(Not available)	Depositor
$\langle I/\sigma(I) \rangle$ ¹	1.81 (at 1.83Å)	Xtriage
Refinement program	REFMAC 5.8.0155	Depositor
R, R_{free}	0.178 , 0.219 0.182 , 0.222	Depositor DCC
R_{free} test set	2669 reflections (4.86%)	wwPDB-VP
Wilson B-factor (Å ²)	30.3	Xtriage
Anisotropy	0.054	Xtriage
Bulk solvent k_{sol} (e/Å ³), B_{sol} (Å ²)	0.33 , 44.6	EDS
L-test for twinning ²	$\langle L \rangle = 0.48$, $\langle L^2 \rangle = 0.31$	Xtriage
Estimated twinning fraction	0.043 for h,-k,-l	Xtriage
F_o, F_c correlation	0.97	EDS
Total number of atoms	5631	wwPDB-VP
Average B, all atoms (Å ²)	37.0	wwPDB-VP

Xtriage's analysis on translational NCS is as follows: *The largest off-origin peak in the Patterson function is 5.75% of the height of the origin peak. No significant pseudotranslation is detected.*

¹Intensities estimated from amplitudes.

²Theoretical values of $\langle |L| \rangle$, $\langle L^2 \rangle$ for acentric reflections are 0.5, 0.333 respectively for untwinned datasets, and 0.375, 0.2 for perfectly twinned datasets.

5 Model quality

5.1 Standard geometry

Bond lengths and bond angles in the following residue types are not validated in this section: PMT

The Z score for a bond length (or angle) is the number of standard deviations the observed value is removed from the expected value. A bond length (or angle) with $|Z| > 5$ is considered an outlier worth inspection. RMSZ is the root-mean-square of all Z scores of the bond lengths (or angles).

Mol	Chain	Bond lengths		Bond angles	
		RMSZ	$\# Z > 5$	RMSZ	$\# Z > 5$
1	A	0.67	0/2585	0.61	1/3497 (0.0%)
1	B	0.63	1/2569 (0.0%)	0.63	1/3475 (0.0%)
All	All	0.65	1/5154 (0.0%)	0.62	2/6972 (0.0%)

Chiral center outliers are detected by calculating the chiral volume of a chiral center and verifying if the center is modelled as a planar moiety or with the opposite hand. A planarity outlier is detected by checking planarity of atoms in a peptide group, atoms in a mainchain group or atoms of a sidechain that are expected to be planar.

Mol	Chain	#Chirality outliers	#Planarity outliers
1	B	0	1

All (1) bond length outliers are listed below:

Mol	Chain	Res	Type	Atoms	Z	Observed(Å)	Ideal(Å)
1	B	101	GLY	C-O	-5.95	1.14	1.23

All (2) bond angle outliers are listed below:

Mol	Chain	Res	Type	Atoms	Z	Observed(°)	Ideal(°)
1	B	281	LYS	CD-CE-NZ	-9.59	89.64	111.70
1	A	265	ARG	CG-CD-NE	5.58	123.51	111.80

There are no chirality outliers.

All (1) planarity outliers are listed below:

Mol	Chain	Res	Type	Group
1	B	325	ARG	Sidechain

5.2 Too-close contacts ⓘ

In the following table, the Non-H and H(model) columns list the number of non-hydrogen atoms and hydrogen atoms in the chain respectively. The H(added) column lists the number of hydrogen atoms added and optimized by MolProbity. The Clashes column lists the number of clashes within the asymmetric unit, whereas Symm-Clashes lists symmetry related clashes.

Mol	Chain	Non-H	H(model)	H(added)	Clashes	Symm-Clashes
1	A	2529	0	2543	22	0
1	B	2513	0	2530	26	0
2	A	39	0	27	2	0
2	B	39	0	26	2	0
3	A	266	0	0	2	0
3	B	245	0	0	4	0
All	All	5631	0	5126	47	0

The all-atom clashscore is defined as the number of clashes found per 1000 atoms (including hydrogen atoms). The all-atom clashscore for this structure is 5.

All (47) close contacts within the same asymmetric unit are listed below, sorted by their clash magnitude.

Atom-1	Atom-2	Interatomic distance (Å)	Clash overlap (Å)
1:A:248:THR:HB	1:A:249:PRO:HD2	1.22	1.14
1:A:248:THR:HB	1:A:249:PRO:CD	1.82	1.10
1:A:253:LEU:HD23	1:B:257:LEU:HD12	1.58	0.83
1:B:281:LYS:NZ	1:B:292:LYS:HB3	1.94	0.82
1:A:248:THR:CB	1:A:249:PRO:HD2	2.07	0.81
1:B:281:LYS:HE2	2:B:401:PMT:H4'	1.64	0.78
1:B:281:LYS:HZ1	1:B:292:LYS:HB3	1.47	0.78
1:A:301:ASN:ND2	3:A:501:HOH:O	2.26	0.68
1:B:49:LYS:HD2	1:B:53:ILE:HG21	1.77	0.66
1:A:205:LEU:CD1	1:A:276:MET:HG2	2.32	0.60
2:A:401:PMT:H2'	2:A:401:PMT:O2	2.02	0.59
1:B:262:LYS:NZ	1:B:265:ARG:HE	2.01	0.58
1:A:63:PHE:O	1:A:67:GLN:HG2	2.03	0.58
1:A:205:LEU:HD13	1:A:276:MET:HG2	1.88	0.54
1:A:281:LYS:HE3	2:A:401:PMT:H5''	1.89	0.54
1:A:265:ARG:HH21	1:A:265:ARG:CG	2.20	0.54
1:B:256:ASN:HB3	3:B:683:HOH:O	2.09	0.52
1:B:288:MET:O	1:B:292:LYS:HG2	2.09	0.51
1:B:295:GLN:OE1	2:B:401:PMT:H5	2.11	0.50
1:A:265:ARG:HH21	1:A:265:ARG:HG2	1.75	0.50
1:B:328:ASP:OD1	3:B:501:HOH:O	2.20	0.49

Continued on next page...

Continued from previous page...

Atom-1	Atom-2	Interatomic distance (Å)	Clash overlap (Å)
1:B:49:LYS:CG	1:B:53:ILE:HG21	2.42	0.49
1:A:95:ILE:HD12	1:B:95:ILE:HD13	1.94	0.49
3:A:508:HOH:O	1:B:226:LYS:NZ	2.46	0.49
1:A:335:LYS:HG3	1:A:335:LYS:O	2.13	0.49
1:B:324:ASN:ND2	1:B:328:ASP:OD2	2.42	0.49
1:B:49:LYS:CD	1:B:53:ILE:HG21	2.43	0.48
1:A:248:THR:CB	1:A:249:PRO:CD	2.59	0.48
1:B:281:LYS:HA	1:B:281:LYS:HD3	1.75	0.48
1:A:41:GLU:H	1:A:41:GLU:HG2	1.45	0.48
1:A:265:ARG:HG3	1:A:269:GLU:OE1	2.14	0.47
1:A:39:GLU:H	1:A:41:GLU:HG2	1.82	0.45
1:B:289:LEU:HD22	1:B:309:LEU:HG	1.98	0.45
1:B:63:PHE:O	1:B:67:GLN:HG2	2.17	0.45
1:A:89:ASN:ND2	1:A:224:GLN:OE1	2.46	0.45
1:B:39:GLU:O	1:B:42:GLN:HB3	2.16	0.45
1:B:274:GLN:NE2	3:B:517:HOH:O	2.51	0.42
1:B:71:LYS:HD3	1:B:71:LYS:HA	1.81	0.42
1:B:244:THR:O	1:B:246:ARG:NH2	2.51	0.42
1:A:281:LYS:HA	1:A:281:LYS:HD3	1.76	0.42
1:B:252:LYS:N	1:B:252:LYS:HD3	2.34	0.42
1:B:49:LYS:HD2	1:B:53:ILE:CG2	2.47	0.41
1:A:215:PHE:HB3	1:A:257:LEU:HB3	2.02	0.41
1:A:337:ALA:HB3	1:A:341:GLU:OE2	2.21	0.41
1:B:356:ALA:O	1:B:359:LYS:HG2	2.21	0.40
1:B:53:ILE:HG22	3:B:601:HOH:O	2.21	0.40
1:A:57:ILE:HG12	1:A:194:SER:HB3	2.02	0.40

There are no symmetry-related clashes.

5.3 Torsion angles [i](#)

5.3.1 Protein backbone [i](#)

In the following table, the Percentiles column shows the percent Ramachandran outliers of the chain as a percentile score with respect to all X-ray entries followed by that with respect to entries of similar resolution.

The Analysed column shows the number of residues for which the backbone conformation was analysed, and the total number of residues.

Mol	Chain	Analysed	Favoured	Allowed	Outliers	Percentiles	
1	A	306/371 (82%)	300 (98%)	6 (2%)	0	100	100
1	B	304/371 (82%)	294 (97%)	10 (3%)	0	100	100
All	All	610/742 (82%)	594 (97%)	16 (3%)	0	100	100

There are no Ramachandran outliers to report.

5.3.2 Protein sidechains ⓘ

In the following table, the Percentiles column shows the percent sidechain outliers of the chain as a percentile score with respect to all X-ray entries followed by that with respect to entries of similar resolution.

The Analysed column shows the number of residues for which the sidechain conformation was analysed, and the total number of residues.

Mol	Chain	Analysed	Rotameric	Outliers	Percentiles	
1	A	282/336 (84%)	272 (96%)	10 (4%)	39	20
1	B	280/336 (83%)	272 (97%)	8 (3%)	45	27
All	All	562/672 (84%)	544 (97%)	18 (3%)	42	23

All (18) residues with a non-rotameric sidechain are listed below:

Mol	Chain	Res	Type
1	A	39	GLU
1	A	41	GLU
1	A	93	ARG
1	A	265	ARG
1	A	276	MET
1	A	281	LYS
1	A	291	TYR
1	A	308	ASN
1	A	323	GLU
1	A	335	LYS
1	B	40	GLU
1	B	42	GLN
1	B	93	ARG
1	B	250	ASP
1	B	252	LYS
1	B	281	LYS
1	B	291	TYR
1	B	308	ASN

Some sidechains can be flipped to improve hydrogen bonding and reduce clashes. All (1) such sidechains are listed below:

Mol	Chain	Res	Type
1	A	42	GLN

5.3.3 RNA [i](#)

There are no RNA molecules in this entry.

5.4 Non-standard residues in protein, DNA, RNA chains [i](#)

There are no non-standard protein/DNA/RNA residues in this entry.

5.5 Carbohydrates [i](#)

There are no carbohydrates in this entry.

5.6 Ligand geometry [i](#)

2 ligands are modelled in this entry.

In the following table, the Counts columns list the number of bonds (or angles) for which Mogul statistics could be retrieved, the number of bonds (or angles) that are observed in the model and the number of bonds (or angles) that are defined in the Chemical Component Dictionary. The Link column lists molecule types, if any, to which the group is linked. The Z score for a bond length (or angle) is the number of standard deviations the observed value is removed from the expected value. A bond length (or angle) with $|Z| > 2$ is considered an outlier worth inspection. RMSZ is the root-mean-square of all Z scores of the bond lengths (or angles).

Mol	Type	Chain	Res	Link	Bond lengths			Bond angles		
					Counts	RMSZ	# $ Z > 2$	Counts	RMSZ	# $ Z > 2$
2	PMT	A	401	-	32,40,40	1.79	7 (21%)	44,60,60	1.42	8 (18%)
2	PMT	B	401	-	32,40,40	1.87	7 (21%)	44,60,60	2.54	14 (31%)

In the following table, the Chirals column lists the number of chiral outliers, the number of chiral centers analysed, the number of these observed in the model and the number defined in the Chemical Component Dictionary. Similar counts are reported in the Torsion and Rings columns. '-' means no outliers of that kind were identified.

Mol	Type	Chain	Res	Link	Chirals	Torsions	Rings
2	PMT	A	401	-	-	0/32/54/54	0/2/2/2

Continued on next page...

Continued from previous page...

Mol	Type	Chain	Res	Link	Chirals	Torsions	Rings
2	PMT	B	401	-	-	0/32/54/54	0/2/2/2

All (14) bond length outliers are listed below:

Mol	Chain	Res	Type	Atoms	Z	Observed(Å)	Ideal(Å)
2	B	401	PMT	P'-O12	-4.72	1.35	1.54
2	A	401	PMT	P'-O13	-4.38	1.37	1.54
2	A	401	PMT	O4'-C4'	-4.30	1.14	1.23
2	A	401	PMT	P'-O12	-4.03	1.38	1.54
2	B	401	PMT	P'-O13	-3.88	1.39	1.54
2	A	401	PMT	P'-O11	-3.39	1.39	1.50
2	B	401	PMT	P'-O11	-3.39	1.39	1.50
2	B	401	PMT	P-OP2	-3.29	1.54	1.61
2	B	401	PMT	O4'-C4'	-2.72	1.18	1.23
2	B	401	PMT	C9'-C6'	-2.71	1.47	1.53
2	A	401	PMT	O4B-C4B	-2.52	1.39	1.45
2	B	401	PMT	C6-N1	-2.28	1.32	1.35
2	A	401	PMT	C8'-C6'	-2.27	1.48	1.53
2	A	401	PMT	C2-N3	-2.05	1.34	1.38

All (22) bond angle outliers are listed below:

Mol	Chain	Res	Type	Atoms	Z	Observed(°)	Ideal(°)
2	B	401	PMT	C4B-O4B-C1B	-8.79	100.67	109.83
2	A	401	PMT	C6-N1-C2	-3.10	116.22	121.22
2	B	401	PMT	C5-C4-N3	-2.74	118.47	121.69
2	A	401	PMT	C5-C4-N3	-2.31	118.98	121.69
2	B	401	PMT	C5-C4-N4	-2.19	117.27	121.17
2	B	401	PMT	O4B-C4B-C3B	-2.08	101.04	105.15
2	B	401	PMT	C5'-C4'-N3'	-2.01	112.44	116.58
2	B	401	PMT	O13-P'-O11	2.03	118.51	110.60
2	A	401	PMT	OP2-P-O5B	2.17	109.27	103.08
2	B	401	PMT	C3'-N3'-C4'	2.25	126.72	122.59
2	A	401	PMT	C9'-C6'-C5'	2.33	112.86	108.82
2	B	401	PMT	O7'-C7'-C6'	2.38	114.37	110.55
2	B	401	PMT	C5B-C4B-C3B	2.45	124.50	115.29
2	B	401	PMT	C8'-C6'-C7'	2.49	112.29	108.23
2	B	401	PMT	C2B-C3B-C4B	2.72	107.84	102.62
2	A	401	PMT	C2'-C3'-N3'	2.74	117.40	111.85
2	A	401	PMT	O7'-C7'-C6'	2.79	115.04	110.55
2	A	401	PMT	C4B-O4B-C1B	3.22	113.19	109.83
2	A	401	PMT	O4B-C1B-N1	3.29	114.59	108.05

Continued on next page...

Continued from previous page...

Mol	Chain	Res	Type	Atoms	Z	Observed(°)	Ideal(°)
2	B	401	PMT	N4-C4-N3	4.70	124.24	116.56
2	B	401	PMT	O5B-C5B-C4B	5.37	127.67	109.00
2	B	401	PMT	O4B-C1B-N1	7.62	123.18	108.05

There are no chirality outliers.

There are no torsion outliers.

There are no ring outliers.

2 monomers are involved in 4 short contacts:

Mol	Chain	Res	Type	Clashes	Symm-Clashes
2	A	401	PMT	2	0
2	B	401	PMT	2	0

5.7 Other polymers [i](#)

There are no such residues in this entry.

5.8 Polymer linkage issues [i](#)

There are no chain breaks in this entry.

6 Fit of model and data [i](#)

6.1 Protein, DNA and RNA chains [i](#)

In the following table, the column labelled ‘#RSRZ> 2’ contains the number (and percentage) of RSRZ outliers, followed by percent RSRZ outliers for the chain as percentile scores relative to all X-ray entries and entries of similar resolution. The OWAB column contains the minimum, median, 95th percentile and maximum values of the occupancy-weighted average B-factor per residue. The column labelled ‘Q< 0.9’ lists the number of (and percentage) of residues with an average occupancy less than 0.9.

Mol	Chain	Analysed	<RSRZ>	#RSRZ>2	OWAB(Å ²)	Q<0.9
1	A	310/371 (83%)	0.17	12 (3%) 39 36	20, 34, 63, 91	0
1	B	308/371 (83%)	0.00	9 (2%) 51 49	20, 35, 59, 75	0
All	All	618/742 (83%)	0.09	21 (3%) 45 42	20, 34, 60, 91	0

All (21) RSRZ outliers are listed below:

Mol	Chain	Res	Type	RSRZ
1	A	242	GLU	6.5
1	A	249	PRO	6.3
1	A	243	GLY	6.0
1	B	243	GLY	5.9
1	B	360	THR	3.9
1	A	38	THR	3.8
1	A	244	THR	3.5
1	B	249	PRO	3.2
1	A	227	ILE	2.9
1	A	291	TYR	2.8
1	B	227	ILE	2.8
1	A	360	THR	2.7
1	B	255	VAL	2.6
1	A	40	GLU	2.5
1	B	250	ASP	2.4
1	A	39	GLU	2.2
1	A	245	THR	2.1
1	A	224	GLN	2.1
1	B	39	GLU	2.0
1	B	263	PHE	2.0
1	B	359	LYS	2.0

6.2 Non-standard residues in protein, DNA, RNA chains [i](#)

There are no non-standard protein/DNA/RNA residues in this entry.

6.3 Carbohydrates [i](#)

There are no carbohydrates in this entry.

6.4 Ligands [i](#)

In the following table, the Atoms column lists the number of modelled atoms in the group and the number defined in the chemical component dictionary. The B-factors column lists the minimum, median, 95th percentile and maximum values of B factors of atoms in the group. The column labelled 'Q< 0.9' lists the number of atoms with occupancy less than 0.9.

Mol	Type	Chain	Res	Atoms	RSCC	RSR	B-factors(\AA^2)	Q<0.9
2	PMT	A	401	39/39	0.95	0.14	22,40,62,64	7
2	PMT	B	401	39/39	0.97	0.12	23,40,61,64	7

6.5 Other polymers [i](#)

There are no such residues in this entry.