



# Full wwPDB X-ray Structure Validation Report ⓘ

Feb 22, 2020 – 12:25 AM EST

PDB ID : 5B0S  
Title : Beta-1,2-Mannobiose phosphorylase from *Listeria innocua* - beta-1,2-mannotriose complex  
Authors : Tsuda, T.; Arakawa, T.; Fushinobu, S.  
Deposited on : 2015-11-02  
Resolution : 2.10 Å(reported)

This is a Full wwPDB X-ray Structure Validation Report for a publicly released PDB entry.

We welcome your comments at [validation@mail.wwpdb.org](mailto:validation@mail.wwpdb.org)

A user guide is available at

<https://www.wwpdb.org/validation/2017/XrayValidationReportHelp>

with specific help available everywhere you see the ⓘ symbol.

---

The following versions of software and data (see [references ⓘ](#)) were used in the production of this report:

MolProbity	:	4.02b-467
Mogul	:	1.8.0 (224370), CSD as540be (2019)
Xtriage (Phenix)	:	1.13
EDS	:	2.8
Percentile statistics	:	20171227.v01 (using entries in the PDB archive December 27th 2017)
Refmac	:	5.8.0158
CCP4	:	7.0.044 (Gargrove)
Ideal geometry (proteins)	:	Engh & Huber (2001)
Ideal geometry (DNA, RNA)	:	Parkinson et al. (1996)
Validation Pipeline (wwPDB-VP)	:	2.8

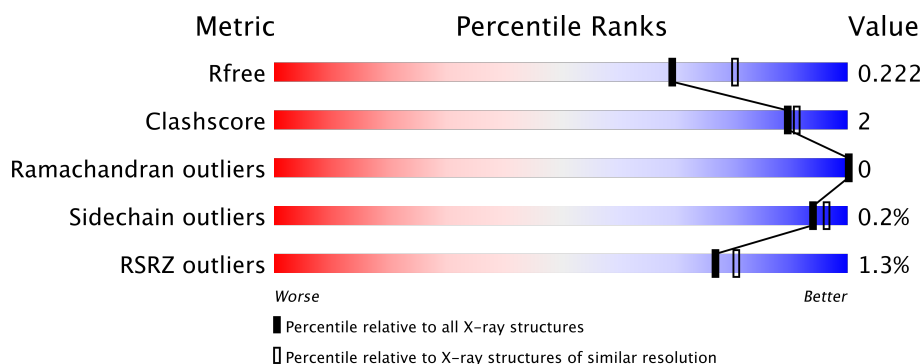
# 1 Overall quality at a glance

The following experimental techniques were used to determine the structure:

## *X-RAY DIFFRACTION*

The reported resolution of this entry is 2.10 Å.

Percentile scores (ranging between 0-100) for global validation metrics of the entry are shown in the following graphic. The table shows the number of entries on which the scores are based.



Metric	Whole archive (#Entries)	Similar resolution (#Entries, resolution range(Å))
$R_{free}$	111664	4608 (2.10-2.10)
Clashscore	122126	5109 (2.10-2.10)
Ramachandran outliers	120053	5059 (2.10-2.10)
Sidechain outliers	120020	5060 (2.10-2.10)
RSRZ outliers	108989	4497 (2.10-2.10)

The table below summarises the geometric issues observed across the polymeric chains and their fit to the electron density. The red, orange, yellow and green segments on the lower bar indicate the fraction of residues that contain outliers for  $\geq 3$ , 2, 1 and 0 types of geometric quality criteria respectively. A grey segment represents the fraction of residues that are not modelled. The numeric value for each fraction is indicated below the corresponding segment, with a dot representing fractions  $\leq 5\%$ . The upper red bar (where present) indicates the fraction of residues that have poor fit to the electron density. The numeric value is given above the bar.

Mol	Chain	Length	Quality of chain
1	A	363	<div> <div></div> <div>91%</div> <div>6%</div> <div>.</div> </div>
1	B	363	<div> <div>2%</div> <div>94%</div> <div>.</div> <div>.</div> </div>

The following table lists non-polymeric compounds, carbohydrate monomers and non-standard residues in protein, DNA, RNA chains that are outliers for geometric or electron-density-fit criteria:

Mol	Type	Chain	Res	Chirality	Geometry	Clashes	Electron density
5	MES	A	409	-	X	-	-

## 2 Entry composition

There are 7 unique types of molecules in this entry. The entry contains 6149 atoms, of which 0 are hydrogens and 0 are deuteriums.

In the tables below, the ZeroOcc column contains the number of atoms modelled with zero occupancy, the AltConf column contains the number of residues with at least one atom in alternate conformation and the Trace column contains the number of residues modelled with at most 2 atoms.

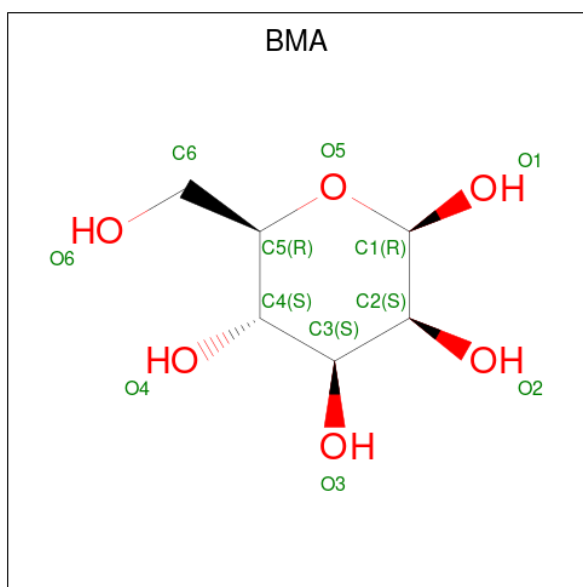
- Molecule 1 is a protein called Lin0857 protein.

Mol	Chain	Residues	Atoms					ZeroOcc	AltConf	Trace
1	A	354	Total	C	N	O	S	0	0	0
			2815	1802	462	542	9			
1	B	355	Total	C	N	O	S	0	0	0
			2824	1808	464	543	9			

There are 16 discrepancies between the modelled and reference sequences:

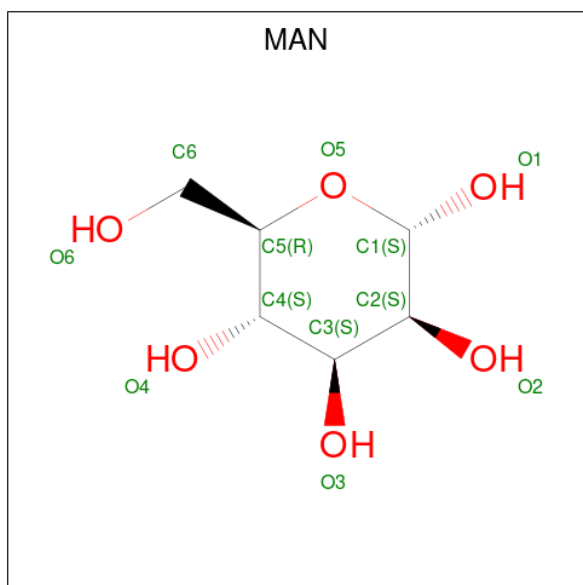
Chain	Residue	Modelled	Actual	Comment	Reference
A	356	LEU	-	expression tag	UNP Q92DF6
A	357	GLU	-	expression tag	UNP Q92DF6
A	358	HIS	-	expression tag	UNP Q92DF6
A	359	HIS	-	expression tag	UNP Q92DF6
A	360	HIS	-	expression tag	UNP Q92DF6
A	361	HIS	-	expression tag	UNP Q92DF6
A	362	HIS	-	expression tag	UNP Q92DF6
A	363	HIS	-	expression tag	UNP Q92DF6
B	356	LEU	-	expression tag	UNP Q92DF6
B	357	GLU	-	expression tag	UNP Q92DF6
B	358	HIS	-	expression tag	UNP Q92DF6
B	359	HIS	-	expression tag	UNP Q92DF6
B	360	HIS	-	expression tag	UNP Q92DF6
B	361	HIS	-	expression tag	UNP Q92DF6
B	362	HIS	-	expression tag	UNP Q92DF6
B	363	HIS	-	expression tag	UNP Q92DF6

- Molecule 2 is BETA-D-MANNOSE (three-letter code: BMA) (formula: C<sub>6</sub>H<sub>12</sub>O<sub>6</sub>).



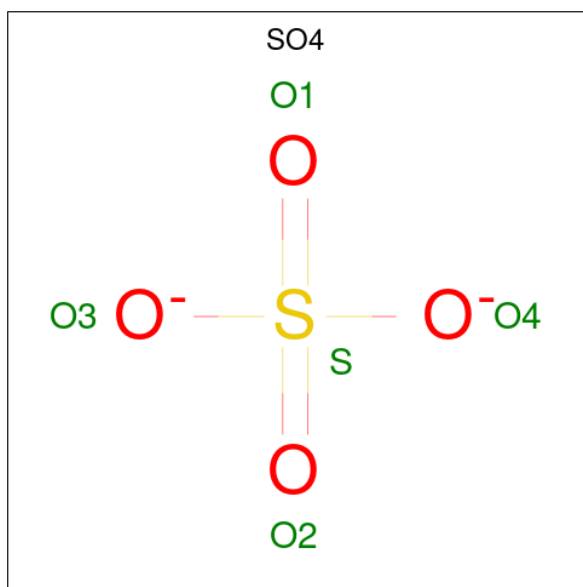
Mol	Chain	Residues	Atoms			ZeroOcc	AltConf
2	A	1	Total	C	O	0	0
			12	6	6		
2	A	1	Total	C	O	0	0
			11	6	5		
2	B	1	Total	C	O	0	0
			12	6	6		
2	B	1	Total	C	O	0	0
			11	6	5		

- Molecule 3 is ALPHA-D-MANNOSE (three-letter code: MAN) (formula: C<sub>6</sub>H<sub>12</sub>O<sub>6</sub>).



Mol	Chain	Residues	Atoms			ZeroOcc	AltConf
3	A	1	Total	C	O	0	0
			11	6	5		
3	B	1	Total	C	O	0	0
			11	6	5		

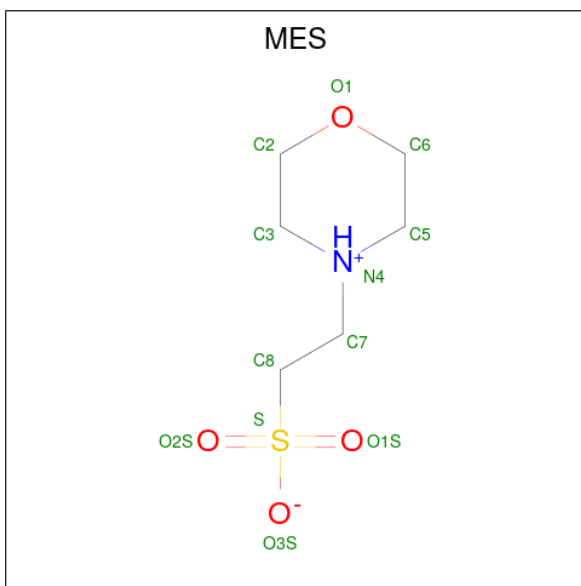
- Molecule 4 is SULFATE ION (three-letter code: SO4) (formula: O<sub>4</sub>S).



Mol	Chain	Residues	Atoms			ZeroOcc	AltConf
4	A	1	Total	O	S	0	0
			5	4	1		
4	A	1	Total	O	S	0	0
			5	4	1		
4	A	1	Total	O	S	0	0
			5	4	1		
4	A	1	Total	O	S	0	0
			5	4	1		
4	B	1	Total	O	S	0	0
			5	4	1		
4	B	1	Total	O	S	0	0
			5	4	1		
4	B	1	Total	O	S	0	0
			5	4	1		

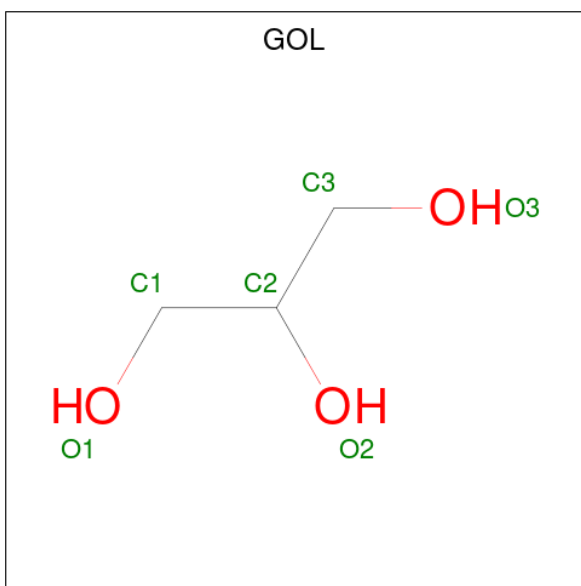
- Molecule 5 is 2-(N-MORPHOLINO)-ETHANESULFONIC ACID (three-letter code: MES)

(formula:  $C_6H_{13}NO_4S$ ).



Mol	Chain	Residues	Atoms					ZeroOcc	AltConf
5	A	1	Total	C	N	O	S	0	0
			12	6	1	4	1		
5	B	1	Total	C	N	O	S	0	0
			12	6	1	4	1		
5	B	1	Total	C	N	O	S	0	0
			12	6	1	4	1		

- Molecule 6 is GLYCEROL (three-letter code: GOL) (formula:  $C_3H_8O_3$ ).



Mol	Chain	Residues	Atoms			ZeroOcc	AltConf
6	B	1	Total	C	O	0	0
			6	3	3		
6	B	1	Total	C	O	0	0
			6	3	3		

- Molecule 7 is water.

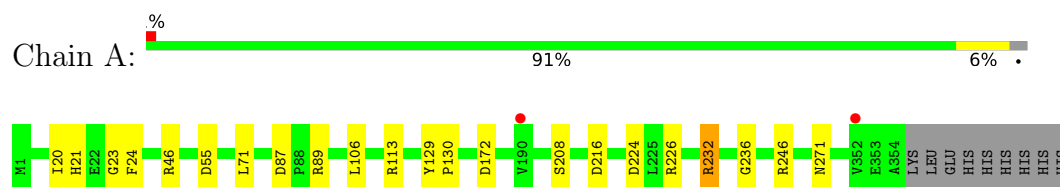
Mol	Chain	Residues	Atoms		ZeroOcc	AltConf
7	A	196	Total	O	0	0
			196	196		
7	B	153	Total	O	0	0
			153	153		



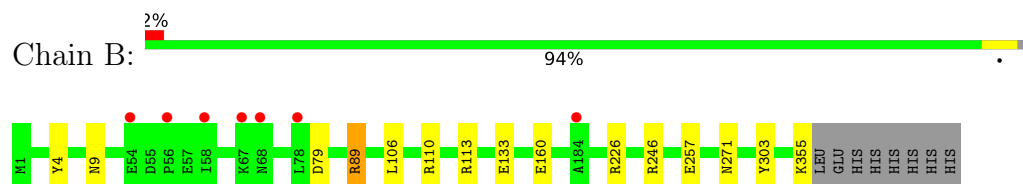
### 3 Residue-property plots [i](#)

These plots are drawn for all protein, RNA and DNA chains in the entry. The first graphic for a chain summarises the proportions of the various outlier classes displayed in the second graphic. The second graphic shows the sequence view annotated by issues in geometry and electron density. Residues are color-coded according to the number of geometric quality criteria for which they contain at least one outlier: green = 0, yellow = 1, orange = 2 and red = 3 or more. A red dot above a residue indicates a poor fit to the electron density ( $RSRZ > 2$ ). Stretches of 2 or more consecutive residues without any outlier are shown as a green connector. Residues present in the sample, but not in the model, are shown in grey.

- Molecule 1: Lin0857 protein



- Molecule 1: Lin0857 protein



## 4 Data and refinement statistics

Property	Value	Source
Space group	P 31 2 1	Depositor
Cell constants a, b, c, $\alpha$ , $\beta$ , $\gamma$	145.54Å 145.54Å 105.74Å 90.00° 90.00° 120.00°	Depositor
Resolution (Å)	43.44 – 2.10 43.44 – 2.10	Depositor EDS
% Data completeness (in resolution range)	99.3 (43.44-2.10) 99.3 (43.44-2.10)	Depositor EDS
$R_{merge}$	0.07	Depositor
$R_{sym}$	(Not available)	Depositor
$\langle I/\sigma(I) \rangle$ <sup>1</sup>	2.99 (at 2.10Å)	Xtriage
Refinement program	REFMAC 5.8.0107	Depositor
R, $R_{free}$	0.179 , 0.215 0.192 , 0.222	Depositor DCC
$R_{free}$ test set	3783 reflections (5.05%)	wwPDB-VP
Wilson B-factor (Å <sup>2</sup> )	33.2	Xtriage
Anisotropy	0.028	Xtriage
Bulk solvent $k_{sol}$ (e/Å <sup>3</sup> ), $B_{sol}$ (Å <sup>2</sup> )	0.37 , 44.1	EDS
L-test for twinning <sup>2</sup>	$\langle  L  \rangle = 0.52$ , $\langle L^2 \rangle = 0.36$	Xtriage
Estimated twinning fraction	0.014 for -h,-k,l	Xtriage
$F_o, F_c$ correlation	0.96	EDS
Total number of atoms	6149	wwPDB-VP
Average B, all atoms (Å <sup>2</sup> )	39.0	wwPDB-VP

Xtriage's analysis on translational NCS is as follows: *The largest off-origin peak in the Patterson function is 3.57% of the height of the origin peak. No significant pseudotranslation is detected.*

<sup>1</sup>Intensities estimated from amplitudes.

<sup>2</sup>Theoretical values of  $\langle |L| \rangle$ ,  $\langle L^2 \rangle$  for acentric reflections are 0.5, 0.333 respectively for untwinned datasets, and 0.375, 0.2 for perfectly twinned datasets.

## 5 Model quality

### 5.1 Standard geometry

Bond lengths and bond angles in the following residue types are not validated in this section: GOL, BMA, SO4, MES, MAN

The Z score for a bond length (or angle) is the number of standard deviations the observed value is removed from the expected value. A bond length (or angle) with  $|Z| > 5$  is considered an outlier worth inspection. RMSZ is the root-mean-square of all Z scores of the bond lengths (or angles).

Mol	Chain	Bond lengths		Bond angles	
		RMSZ	$\# Z  > 5$	RMSZ	$\# Z  > 5$
1	A	1.03	2/2883 (0.1%)	1.04	10/3910 (0.3%)
1	B	1.04	1/2892 (0.0%)	0.99	7/3921 (0.2%)
All	All	1.03	3/5775 (0.1%)	1.02	17/7831 (0.2%)

All (3) bond length outliers are listed below:

Mol	Chain	Res	Type	Atoms	Z	Observed(Å)	Ideal(Å)
1	B	257	GLU	CG-CD	7.48	1.63	1.51
1	A	208	SER	CB-OG	-6.34	1.34	1.42
1	A	23	GLY	C-O	5.03	1.31	1.23

All (17) bond angle outliers are listed below:

Mol	Chain	Res	Type	Atoms	Z	Observed(°)	Ideal(°)
1	A	113	ARG	NE-CZ-NH1	8.74	124.67	120.30
1	B	226	ARG	NE-CZ-NH1	7.59	124.09	120.30
1	A	226	ARG	NE-CZ-NH2	6.72	123.66	120.30
1	A	113	ARG	NE-CZ-NH2	-6.63	116.98	120.30
1	B	106	LEU	CA-CB-CG	6.38	129.98	115.30
1	A	55	ASP	CB-CG-OD1	6.31	123.98	118.30
1	A	232	ARG	NE-CZ-NH2	6.29	123.44	120.30
1	B	110	ARG	NE-CZ-NH2	6.28	123.44	120.30
1	B	113	ARG	NE-CZ-NH2	6.27	123.44	120.30
1	A	87	ASP	CB-CG-OD1	6.25	123.93	118.30
1	B	79	ASP	CB-CG-OD1	6.06	123.75	118.30
1	A	106	LEU	CA-CB-CG	5.93	128.93	115.30
1	A	224	ASP	CB-CG-OD1	5.71	123.44	118.30
1	A	46	ARG	NE-CZ-NH2	-5.51	117.55	120.30
1	A	172	ASP	CB-CG-OD1	5.46	123.21	118.30
1	B	257	GLU	OE1-CD-OE2	-5.22	117.04	123.30

*Continued on next page...*

*Continued from previous page...*

Mol	Chain	Res	Type	Atoms	Z	Observed(°)	Ideal(°)
1	B	89	ARG	NE-CZ-NH1	-5.09	117.75	120.30

There are no chirality outliers.

There are no planarity outliers.

## 5.2 Too-close contacts ⓘ

In the following table, the Non-H and H(model) columns list the number of non-hydrogen atoms and hydrogen atoms in the chain respectively. The H(added) column lists the number of hydrogen atoms added and optimized by MolProbity. The Clashes column lists the number of clashes within the asymmetric unit, whereas Symm-Clashes lists symmetry related clashes.

Mol	Chain	Non-H	H(model)	H(added)	Clashes	Symm-Clashes
1	A	2815	0	2730	11	0
1	B	2824	0	2743	10	0
2	A	23	0	20	0	0
2	B	23	0	19	2	0
3	A	11	0	10	4	0
3	B	11	0	9	3	0
4	A	25	0	0	0	0
4	B	20	0	0	0	0
5	A	12	0	13	2	0
5	B	24	0	26	0	0
6	B	12	0	16	0	0
7	A	196	0	0	0	0
7	B	153	0	0	5	0
All	All	6149	0	5586	23	0

The all-atom clashscore is defined as the number of clashes found per 1000 atoms (including hydrogen atoms). The all-atom clashscore for this structure is 2.

All (23) close contacts within the same asymmetric unit are listed below, sorted by their clash magnitude.

Atom-1	Atom-2	Interatomic distance (Å)	Clash overlap (Å)
2:B:409:BMA:H1	2:B:410:BMA:O1	1.78	0.84
1:A:89:ARG:HH12	3:A:403:MAN:H61	1.51	0.73
2:B:409:BMA:C1	2:B:410:BMA:O1	2.40	0.70
1:B:89:ARG:HH22	3:B:411:MAN:H61	1.56	0.69
1:A:20:ILE:HD12	5:A:409:MES:H62	1.86	0.56
1:A:24:PHE:CZ	1:A:71:LEU:HD23	2.44	0.53

*Continued on next page...*

Continued from previous page...

Atom-1	Atom-2	Interatomic distance (Å)	Clash overlap (Å)
1:B:4:TYR:HE1	7:B:629:HOH:O	1.91	0.53
1:A:246:ARG:HD3	3:A:403:MAN:O4	2.09	0.52
1:B:246:ARG:NH1	1:B:271:ASN:OD1	2.39	0.52
1:A:89:ARG:HH12	3:A:403:MAN:C6	2.21	0.50
1:A:21:HIS:CD2	1:A:71:LEU:HD22	2.48	0.48
1:B:355:LYS:HE2	7:B:645:HOH:O	2.14	0.47
1:B:133:GLU:HG2	7:B:513:HOH:O	2.15	0.46
1:B:89:ARG:NH2	3:B:411:MAN:H61	2.28	0.45
1:B:89:ARG:HH22	3:B:411:MAN:C6	2.25	0.45
1:A:89:ARG:NH1	3:A:403:MAN:H61	2.25	0.44
1:A:246:ARG:NH2	1:A:271:ASN:HD22	2.16	0.43
1:B:133:GLU:CG	7:B:513:HOH:O	2.65	0.43
1:A:216:ASP:CG	1:A:236:GLY:HA2	2.39	0.43
1:B:160:GLU:HG3	7:B:561:HOH:O	2.19	0.42
1:A:20:ILE:O	5:A:409:MES:H82	2.20	0.41
1:B:9:ASN:HB3	1:B:303:TYR:CZ	2.56	0.41
1:A:129:TYR:O	1:A:130:PRO:C	2.58	0.41

There are no symmetry-related clashes.

## 5.3 Torsion angles ⓘ

### 5.3.1 Protein backbone ⓘ

In the following table, the Percentiles column shows the percent Ramachandran outliers of the chain as a percentile score with respect to all X-ray entries followed by that with respect to entries of similar resolution.

The Analysed column shows the number of residues for which the backbone conformation was analysed, and the total number of residues.

Mol	Chain	Analysed	Favoured	Allowed	Outliers	Percentiles	
1	A	352/363 (97%)	338 (96%)	14 (4%)	0	100	100
1	B	353/363 (97%)	341 (97%)	12 (3%)	0	100	100
All	All	705/726 (97%)	679 (96%)	26 (4%)	0	100	100

There are no Ramachandran outliers to report.

### 5.3.2 Protein sidechains [i](#)

In the following table, the Percentiles column shows the percent sidechain outliers of the chain as a percentile score with respect to all X-ray entries followed by that with respect to entries of similar resolution.

The Analysed column shows the number of residues for which the sidechain conformation was analysed, and the total number of residues.

Mol	Chain	Analysed	Rotameric	Outliers	Percentiles	
1	A	302/311 (97%)	301 (100%)	1 (0%)	93	96
1	B	303/311 (97%)	303 (100%)	0	100	100
All	All	605/622 (97%)	604 (100%)	1 (0%)	94	96

All (1) residues with a non-rotameric sidechain are listed below:

Mol	Chain	Res	Type
1	A	232	ARG

Some sidechains can be flipped to improve hydrogen bonding and reduce clashes. All (3) such sidechains are listed below:

Mol	Chain	Res	Type
1	A	198	ASN
1	A	271	ASN
1	B	2	ASN

### 5.3.3 RNA [i](#)

There are no RNA molecules in this entry.

## 5.4 Non-standard residues in protein, DNA, RNA chains [i](#)

There are no non-standard protein/DNA/RNA residues in this entry.

## 5.5 Carbohydrates [i](#)

There are no carbohydrates in this entry.

## 5.6 Ligand geometry

20 ligands are modelled in this entry.

In the following table, the Counts columns list the number of bonds (or angles) for which Mogul statistics could be retrieved, the number of bonds (or angles) that are observed in the model and the number of bonds (or angles) that are defined in the Chemical Component Dictionary. The Link column lists molecule types, if any, to which the group is linked. The Z score for a bond length (or angle) is the number of standard deviations the observed value is removed from the expected value. A bond length (or angle) with  $|Z| > 2$  is considered an outlier worth inspection. RMSZ is the root-mean-square of all Z scores of the bond lengths (or angles).

Mol	Type	Chain	Res	Link	Bond lengths			Bond angles		
					Counts	RMSZ	# Z  > 2	Counts	RMSZ	# Z  > 2
2	BMA	A	401	2	12,12,12	0.87	0	17,17,17	1.42	2 (11%)
2	BMA	A	402	3,2	11,11,12	0.78	0	13,15,17	1.46	2 (15%)
3	MAN	A	403	2	11,11,12	1.82	3 (27%)	13,15,17	3.35	6 (46%)
4	SO4	A	404	-	4,4,4	0.34	0	6,6,6	0.44	0
4	SO4	A	405	-	4,4,4	0.71	0	6,6,6	0.61	0
4	SO4	A	406	-	4,4,4	0.31	0	6,6,6	0.40	0
4	SO4	A	407	-	4,4,4	0.81	0	6,6,6	0.46	0
4	SO4	A	408	-	4,4,4	0.67	0	6,6,6	0.57	0
5	MES	A	409	-	12,12,12	1.89	4 (33%)	14,16,16	4.17	10 (71%)
4	SO4	B	401	-	4,4,4	0.55	0	6,6,6	0.92	0
4	SO4	B	402	-	4,4,4	0.31	0	6,6,6	0.56	0
4	SO4	B	403	-	4,4,4	0.67	0	6,6,6	0.42	0
4	SO4	B	404	-	4,4,4	1.19	0	6,6,6	0.42	0
6	GOL	B	405	-	5,5,5	0.64	0	5,5,5	0.67	0
6	GOL	B	406	-	5,5,5	0.48	0	5,5,5	0.73	0
5	MES	B	407	-	12,12,12	2.05	3 (25%)	14,16,16	2.63	5 (35%)
5	MES	B	408	-	12,12,12	1.73	3 (25%)	14,16,16	4.80	5 (35%)
2	BMA	B	409	2	12,12,12	4.09	4 (33%)	17,17,17	3.84	9 (52%)
2	BMA	B	410	3,2	11,11,12	1.50	2 (18%)	13,15,17	1.69	3 (23%)
3	MAN	B	411	2	11,11,12	2.49	6 (54%)	13,15,17	4.22	7 (53%)

In the following table, the Chirals column lists the number of chiral outliers, the number of chiral centers analysed, the number of these observed in the model and the number defined in the Chemical Component Dictionary. Similar counts are reported in the Torsion and Rings columns. '-' means no outliers of that kind were identified.

Mol	Type	Chain	Res	Link	Chirals	Torsions	Rings
2	BMA	A	401	2	-	0/2/22/22	0/1/1/1
2	BMA	A	402	3,2	-	0/2/18/22	0/1/1/1

*Continued on next page...*

*Continued from previous page...*

Mol	Type	Chain	Res	Link	Chirals	Torsions	Rings
3	MAN	A	403	2	-	2/2/18/22	0/1/1/1
5	MES	A	409	-	-	5/6/14/14	0/1/1/1
6	GOL	B	405	-	-	0/4/4/4	-
6	GOL	B	406	-	-	4/4/4/4	-
5	MES	B	407	-	-	1/6/14/14	0/1/1/1
5	MES	B	408	-	-	0/6/14/14	0/1/1/1
2	BMA	B	409	2	-	0/2/22/22	0/1/1/1
2	BMA	B	410	3,2	-	0/2/18/22	0/1/1/1
3	MAN	B	411	2	-	2/2/18/22	0/1/1/1

All (25) bond length outliers are listed below:

Mol	Chain	Res	Type	Atoms	Z	Observed(Å)	Ideal(Å)
2	B	409	BMA	C1-C2	-10.85	1.25	1.52
2	B	409	BMA	O2-C2	7.37	1.60	1.43
5	B	407	MES	C8-S	-4.92	1.70	1.77
2	B	409	BMA	C3-C2	4.44	1.63	1.52
3	B	411	MAN	C3-C4	4.37	1.59	1.52
3	A	403	MAN	C3-C4	4.04	1.58	1.52
2	B	410	BMA	O1-C1	3.72	1.47	1.39
3	B	411	MAN	C2-C1	3.69	1.58	1.51
3	B	411	MAN	O1-C1	3.53	1.46	1.39
5	A	409	MES	O2S-S	3.36	1.55	1.45
5	B	407	MES	O2S-S	3.27	1.54	1.45
5	B	408	MES	O1S-S	3.27	1.54	1.45
5	B	408	MES	C8-S	-3.18	1.73	1.77
5	A	409	MES	C8-S	-3.07	1.73	1.77
5	A	409	MES	O1S-S	3.02	1.54	1.45
5	A	409	MES	O3S-S	2.74	1.57	1.47
3	B	411	MAN	C2-C3	2.68	1.57	1.52
5	B	408	MES	O2S-S	2.62	1.52	1.45
5	B	407	MES	O1S-S	2.42	1.52	1.45
3	B	411	MAN	O4-C4	2.40	1.48	1.43
3	B	411	MAN	O5-C5	-2.18	1.39	1.44
3	A	403	MAN	O3-C3	2.17	1.48	1.43
2	B	409	BMA	O4-C4	2.16	1.48	1.43
3	A	403	MAN	O5-C1	-2.14	1.39	1.44
2	B	410	BMA	C2-C3	-2.01	1.49	1.52

All (49) bond angle outliers are listed below:



Mol	Chain	Res	Type	Atoms	Z	Observed(°)	Ideal(°)
5	B	408	MES	O2S-S-C8	-12.19	92.23	106.92
5	B	408	MES	O3S-S-C8	11.62	124.57	105.77
3	B	411	MAN	O4-C4-C3	10.97	130.40	110.02
5	A	409	MES	O1S-S-C8	10.33	119.36	106.92
3	A	403	MAN	O4-C4-C3	8.03	124.95	110.02
2	B	409	BMA	O2-C2-C1	7.41	126.45	109.14
2	B	409	BMA	C1-O5-C5	6.99	127.06	113.68
5	B	407	MES	O1S-S-C8	6.79	115.09	106.92
2	B	409	BMA	O2-C2-C3	-6.76	94.65	110.34
5	A	409	MES	O3S-S-O2S	6.36	126.82	111.27
2	B	409	BMA	C1-C2-C3	5.88	122.61	110.31
3	B	411	MAN	C1-C2-C3	-5.69	101.44	111.16
3	B	411	MAN	O3-C3-C2	-5.68	95.83	109.95
2	B	409	BMA	O5-C1-C2	-5.49	100.45	110.31
5	A	409	MES	C6-C5-N4	-4.96	102.49	110.09
3	A	403	MAN	O3-C3-C2	-4.96	97.62	109.95
3	B	411	MAN	O1-C1-O5	-4.47	97.78	108.34
5	A	409	MES	O2S-S-O1S	-4.41	98.70	113.95
3	A	403	MAN	C3-C4-C5	3.74	113.64	109.91
2	A	402	BMA	C3-C4-C5	3.72	113.63	109.91
5	B	407	MES	O1-C6-C5	-3.66	103.79	111.78
5	A	409	MES	O3S-S-O1S	-3.59	102.50	111.27
5	B	407	MES	O3S-S-O2S	3.52	119.89	111.27
5	B	408	MES	O3S-S-O1S	-3.50	102.73	111.27
2	B	409	BMA	O1-C1-C2	-3.38	99.41	109.03
3	A	403	MAN	O1-C1-O5	-3.38	100.37	108.34
3	A	403	MAN	O5-C5-C4	3.32	115.74	109.68
2	B	410	BMA	C3-C4-C5	3.32	113.22	109.91
5	B	407	MES	O2S-S-O1S	-3.29	102.58	113.95
3	A	403	MAN	O4-C4-C5	-3.26	101.13	109.29
3	B	411	MAN	O4-C4-C5	-3.03	101.72	109.29
5	A	409	MES	C5-N4-C3	-3.02	102.18	108.86
5	B	408	MES	O1S-S-C8	2.96	110.48	106.92
5	B	408	MES	O1-C6-C5	-2.88	105.49	111.78
5	A	409	MES	O3S-S-C8	-2.74	101.33	105.77
5	A	409	MES	O1-C6-C5	2.66	117.58	111.78
3	B	411	MAN	C3-C4-C5	2.63	112.54	109.91
2	B	410	BMA	O1-C1-O5	-2.56	102.29	108.34
2	A	401	BMA	C1-O5-C5	2.52	118.50	113.68
2	A	401	BMA	C4-C3-C2	2.51	115.22	110.82
2	B	409	BMA	O4-C4-C3	2.48	116.09	110.34
3	B	411	MAN	O6-C6-C5	2.38	119.53	111.29
5	B	407	MES	C2-C3-N4	-2.27	106.62	110.09

Continued on next page...

*Continued from previous page...*

Mol	Chain	Res	Type	Atoms	Z	Observed(°)	Ideal(°)
2	A	402	BMA	O3-C3-C4	2.26	114.58	110.16
2	B	409	BMA	C3-C4-C5	-2.19	106.29	110.23
5	A	409	MES	O2S-S-C8	2.14	109.49	106.92
2	B	410	BMA	O5-C5-C4	2.11	113.53	109.68
2	B	409	BMA	C6-C5-C4	2.10	117.94	113.00
5	A	409	MES	C7-N4-C5	2.04	116.46	111.23

There are no chirality outliers.

All (14) torsion outliers are listed below:

Mol	Chain	Res	Type	Atoms
5	A	409	MES	C8-C7-N4-C5
5	A	409	MES	C7-C8-S-O2S
3	B	411	MAN	C4-C5-C6-O6
3	A	403	MAN	C4-C5-C6-O6
3	B	411	MAN	O5-C5-C6-O6
3	A	403	MAN	O5-C5-C6-O6
6	B	406	GOL	O1-C1-C2-O2
5	A	409	MES	C7-C8-S-O3S
6	B	406	GOL	O1-C1-C2-C3
5	A	409	MES	C7-C8-S-O1S
5	A	409	MES	C8-C7-N4-C3
5	B	407	MES	C8-C7-N4-C3
6	B	406	GOL	O2-C2-C3-O3
6	B	406	GOL	C1-C2-C3-O3

There are no ring outliers.

5 monomers are involved in 11 short contacts:

Mol	Chain	Res	Type	Clashes	Symm-Clashes
3	A	403	MAN	4	0
5	A	409	MES	2	0
2	B	409	BMA	2	0
2	B	410	BMA	2	0
3	B	411	MAN	3	0

## 5.7 Other polymers [i](#)

There are no such residues in this entry.

## 5.8 Polymer linkage issues ⓘ

There are no chain breaks in this entry.

## 6 Fit of model and data [i](#)

### 6.1 Protein, DNA and RNA chains [i](#)

In the following table, the column labelled ‘#RSRZ > 2’ contains the number (and percentage) of RSRZ outliers, followed by percent RSRZ outliers for the chain as percentile scores relative to all X-ray entries and entries of similar resolution. The OWAB column contains the minimum, median, 95<sup>th</sup> percentile and maximum values of the occupancy-weighted average B-factor per residue. The column labelled ‘Q < 0.9’ lists the number of (and percentage) of residues with an average occupancy less than 0.9.

Mol	Chain	Analysed	<RSRZ>	#RSRZ>2	OWAB(Å <sup>2</sup> )	Q<0.9
1	A	354/363 (97%)	-0.34	2 (0%) 89 91	26, 36, 52, 72	1 (0%)
1	B	355/363 (97%)	-0.25	7 (1%) 65 69	27, 39, 58, 84	1 (0%)
All	All	709/726 (97%)	-0.29	9 (1%) 77 80	26, 37, 56, 84	2 (0%)

All (9) RSRZ outliers are listed below:

Mol	Chain	Res	Type	RSRZ
1	B	54	GLU	3.2
1	B	58	ILE	2.6
1	B	184	ALA	2.3
1	B	68	ASN	2.3
1	A	190	VAL	2.1
1	A	352	VAL	2.1
1	B	56	PRO	2.1
1	B	67	LYS	2.1
1	B	78	LEU	2.0

### 6.2 Non-standard residues in protein, DNA, RNA chains [i](#)

There are no non-standard protein/DNA/RNA residues in this entry.

### 6.3 Carbohydrates [i](#)

There are no carbohydrates in this entry.

### 6.4 Ligands [i](#)

In the following table, the Atoms column lists the number of modelled atoms in the group and the number defined in the chemical component dictionary. The B-factors column lists the minimum,

median, 95<sup>th</sup> percentile and maximum values of B factors of atoms in the group. The column labelled 'Q< 0.9' lists the number of atoms with occupancy less than 0.9.

Mol	Type	Chain	Res	Atoms	RSCC	RSR	B-factors(Å <sup>2</sup> )	Q<0.9
5	MES	A	409	12/12	0.75	0.31	55,58,62,63	0
3	MAN	B	411	11/12	0.79	0.21	44,50,65,66	0
4	SO4	A	406	5/5	0.85	0.20	92,95,101,108	0
3	MAN	A	403	11/12	0.88	0.14	41,49,61,63	0
5	MES	B	408	12/12	0.91	0.21	49,51,58,62	0
4	SO4	B	404	5/5	0.91	0.45	68,74,80,86	0
4	SO4	A	408	5/5	0.92	0.24	61,63,80,83	0
2	BMA	B	410	11/12	0.92	0.09	27,29,32,34	0
6	GOL	B	405	6/6	0.93	0.10	39,53,54,65	0
2	BMA	B	409	12/12	0.93	0.14	25,28,31,32	0
4	SO4	B	403	5/5	0.93	0.26	76,78,84,91	0
6	GOL	B	406	6/6	0.94	0.13	56,64,67,68	0
4	SO4	A	405	5/5	0.95	0.21	54,55,71,76	0
4	SO4	B	401	5/5	0.97	0.16	59,59,64,64	0
5	MES	B	407	12/12	0.98	0.25	46,48,52,53	0
2	BMA	A	401	12/12	0.98	0.12	24,27,29,29	0
2	BMA	A	402	11/12	0.98	0.10	26,27,30,33	0
4	SO4	A	407	5/5	0.98	0.21	54,54,57,66	0
4	SO4	B	402	5/5	1.00	0.11	32,33,34,34	0
4	SO4	A	404	5/5	1.00	0.10	28,28,29,30	0

## 6.5 Other polymers ⓘ

There are no such residues in this entry.