



# Full wwPDB X-ray Structure Validation Report ⓘ

Apr 14, 2019 – 12:39 PM EDT

PDB ID : 6B09  
Title : Crystal structure of HsNUDT16 in complex with diADPR (soaked)  
Authors : Thirawatananond, P.; Gabelli, S.B.  
Deposited on : 2017-09-14  
Resolution : 3.20 Å(reported)

This is a Full wwPDB X-ray Structure Validation Report for a publicly released PDB entry.

We welcome your comments at [validation@mail.wwpdb.org](mailto:validation@mail.wwpdb.org)

A user guide is available at

<https://www.wwpdb.org/validation/2017/XrayValidationReportHelp>

with specific help available everywhere you see the ⓘ symbol.

---

The following versions of software and data (see [references ⓘ](#)) were used in the production of this report:

MolProbity : 4.02b-467  
Mogul : 1.8.0 (224370), CSD as540be (2019)  
Xtriage (Phenix) : 1.13  
EDS : rb-20031633  
Percentile statistics : 20171227.v01 (using entries in the PDB archive December 27th 2017)  
Refmac : 5.8.0158  
CCP4 : 7.0 (Gargrove)  
Ideal geometry (proteins) : Engh & Huber (2001)  
Ideal geometry (DNA, RNA) : Parkinson et al. (1996)  
Validation Pipeline (wwPDB-VP) : rb-20031633



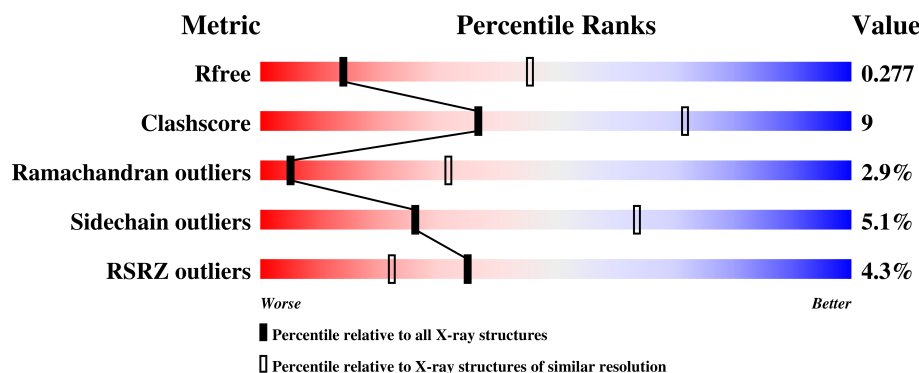
# 1 Overall quality at a glance

The following experimental techniques were used to determine the structure:

*X-RAY DIFFRACTION*


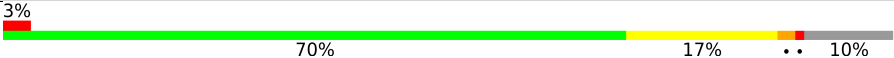
The reported resolution of this entry is 3.20 Å.

Percentile scores (ranging between 0-100) for global validation metrics of the entry are shown in the following graphic. The table shows the number of entries on which the scores are based.



Metric	Whole archive (#Entries)	Similar resolution (#Entries, resolution range(Å))
$R_{free}$	111664	1121 (3.22-3.18)
Clashscore	122126	1091 (3.20-3.20)
Ramachandran outliers	120053	1074 (3.20-3.20)
Sidechain outliers	120020	1073 (3.20-3.20)
RSRZ outliers	108989	1083 (3.22-3.18)

The table below summarises the geometric issues observed across the polymeric chains and their fit to the electron density. The red, orange, yellow and green segments on the lower bar indicate the fraction of residues that contain outliers for  $\geq 3$ , 2, 1 and 0 types of geometric quality criteria. A grey segment represents the fraction of residues that are not modelled. The numeric value for each fraction is indicated below the corresponding segment, with a dot representing fractions  $\leq 5\%$ . The upper red bar (where present) indicates the fraction of residues that have poor fit to the electron density. The numeric value is given above the bar.

Mol	Chain	Length	Quality of chain
1	A	195	 5%                      78%                      10%                      •                      10%
1	B	195	 3%                      70%                      17%                      ••                      10%



## 2 Entry composition [i](#)

There are 6 unique types of molecules in this entry. The entry contains 2874 atoms, of which 0 are hydrogens and 0 are deuteriums.

In the tables below, the ZeroOcc column contains the number of atoms modelled with zero occupancy, the AltConf column contains the number of residues with at least one atom in alternate conformation and the Trace column contains the number of residues modelled with at most 2 atoms.

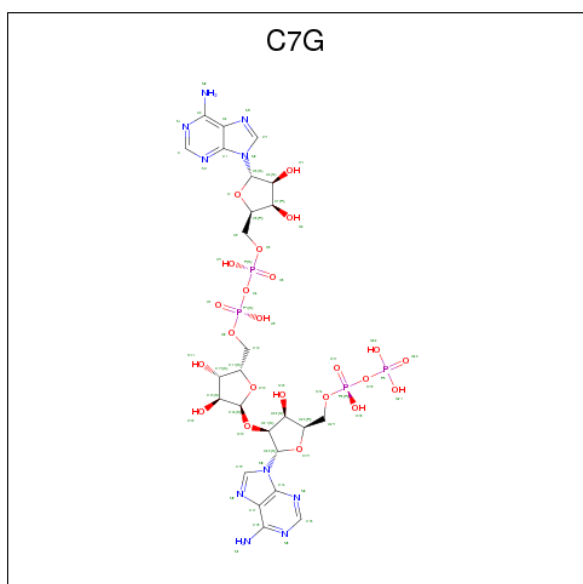
- Molecule 1 is a protein called U8 snoRNA-decapping enzyme.

Mol	Chain	Residues	Atoms					ZeroOcc	AltConf	Trace
1	A	176	Total	C	N	O	S	0	0	0
			1370	867	252	247	4			
1	B	175	Total	C	N	O	S	0	0	0
			1370	869	251	246	4			

There are 2 discrepancies between the modelled and reference sequences:

Chain	Residue	Modelled	Actual	Comment	Reference
A	22	VAL	ALA	engineered mutation	UNP Q96DE0
B	22	VAL	ALA	engineered mutation	UNP Q96DE0

- Molecule 2 is [(2 {R},3 {S},4 {S},5 {S})-5-(6-aminopurin-9-yl)-4-[(2 {S},3 {S},4 {S},5 {S})-5-[[[(2 {R},3 {R},4 {S},5 {S})-5-(6-aminopurin-9-yl)-3,4-bis(oxidanyl)oxolan-2-yl]methoxy-oxidanyl-phosphoryl]oxy-oxidanyl-phosphoryl]oxymethyl]-3,4-bis(oxidanyl)oxolan-2-yl]oxy-3-oxidanyl-oxolan-2-yl]methyl phosphono hydrogen phosphate (three-letter code: C7G) (formula: C<sub>25</sub>H<sub>36</sub>N<sub>10</sub>O<sub>23</sub>P<sub>4</sub>).





Mol	Chain	Residues	Atoms					ZeroOcc	AltConf
2	A	1	Total	C	N	O	P	0	0
			62	25	10	23	4		
2	B	1	Total	C	N	O	P	0	0
			62	25	10	23	4		

- Molecule 3 is MAGNESIUM ION (three-letter code: MG) (formula: Mg).

Mol	Chain	Residues	Atoms		ZeroOcc	AltConf
3	B	2	Total	Mg	0	0
			2	2		
3	A	2	Total	Mg	0	0
			2	2		

- Molecule 4 is CHLORIDE ION (three-letter code: CL) (formula: Cl).

Mol	Chain	Residues	Atoms		ZeroOcc	AltConf
4	A	1	Total	Cl	0	0
			1	1		

- Molecule 5 is SODIUM ION (three-letter code: NA) (formula: Na).

Mol	Chain	Residues	Atoms		ZeroOcc	AltConf
5	B	1	Total	Na	0	0
			1	1		
5	A	1	Total	Na	0	0
			1	1		

- Molecule 6 is water.

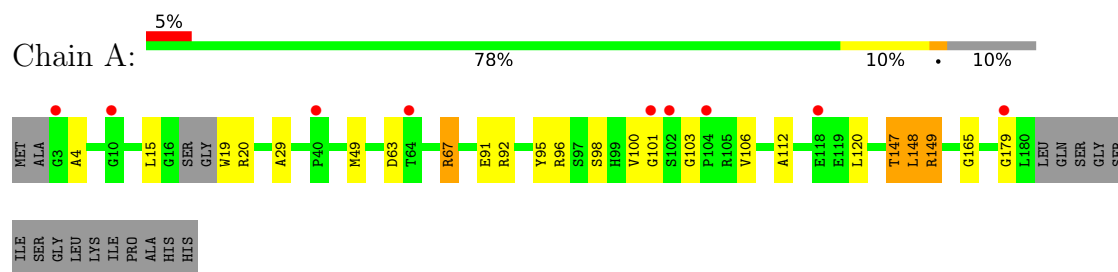
Mol	Chain	Residues	Atoms		ZeroOcc	AltConf
6	A	3	Total	O	0	0
			3	3		



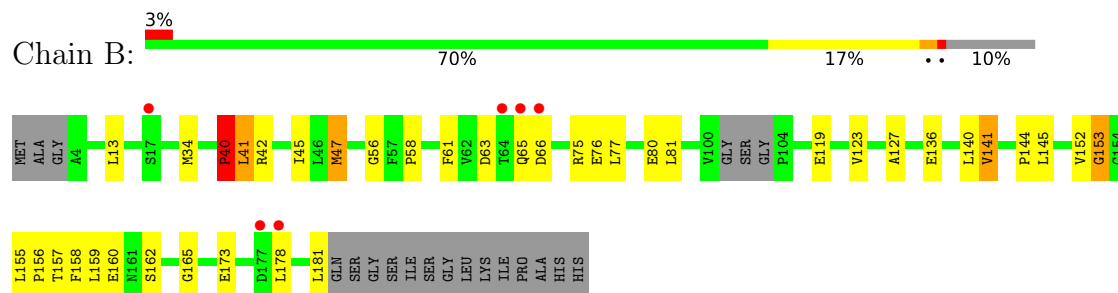
### 3 Residue-property plots [i](#)

These plots are drawn for all protein, RNA and DNA chains in the entry. The first graphic for a chain summarises the proportions of the various outlier classes displayed in the second graphic. The second graphic shows the sequence view annotated by issues in geometry and electron density. Residues are color-coded according to the number of geometric quality criteria for which they contain at least one outlier: green = 0, yellow = 1, orange = 2 and red = 3 or more. A red dot above a residue indicates a poor fit to the electron density ( $RSRZ > 2$ ). Stretches of 2 or more consecutive residues without any outlier are shown as a green connector. Residues present in the sample, but not in the model, are shown in grey.

- Molecule 1: U8 snoRNA-decapping enzyme



- Molecule 1: U8 snoRNA-decapping enzyme





## 4 Data and refinement statistics

Property	Value	Source
Space group	C 1 2 1	Depositor
Cell constants a, b, c, $\alpha$ , $\beta$ , $\gamma$	113.39Å 47.06Å 75.79Å 90.00° 108.74° 90.00°	Depositor
Resolution (Å)	37.62 – 3.20 37.59 – 3.20	Depositor EDS
% Data completeness (in resolution range)	90.8 (37.62-3.20) 90.9 (37.59-3.20)	Depositor EDS
$R_{merge}$	0.17	Depositor
$R_{sym}$	(Not available)	Depositor
$\langle I/\sigma(I) \rangle$ <sup>1</sup>	2.20 (at 3.18Å)	Xtriage
Refinement program	REFMAC	Depositor
R, $R_{free}$	0.256 , 0.279 0.256 , 0.277	Depositor DCC
$R_{free}$ test set	283 reflections (4.84%)	wwPDB-VP
Wilson B-factor (Å <sup>2</sup> )	47.2	Xtriage
Anisotropy	0.831	Xtriage
Bulk solvent $k_{sol}$ (e/Å <sup>3</sup> ), $B_{sol}$ (Å <sup>2</sup> )	0.33 , 52.8	EDS
L-test for twinning <sup>2</sup>	$\langle  L  \rangle = 0.48$ , $\langle L^2 \rangle = 0.31$	Xtriage
Estimated twinning fraction	No twinning to report.	Xtriage
$F_o, F_c$ correlation	0.86	EDS
Total number of atoms	2874	wwPDB-VP
Average B, all atoms (Å <sup>2</sup> )	54.0	wwPDB-VP

Xtriage's analysis on translational NCS is as follows: *The largest off-origin peak in the Patterson function is 7.22% of the height of the origin peak. No significant pseudotranslation is detected.*

<sup>1</sup>Intensities estimated from amplitudes.

<sup>2</sup>Theoretical values of  $\langle |L| \rangle$ ,  $\langle L^2 \rangle$  for acentric reflections are 0.5, 0.333 respectively for untwinned datasets, and 0.375, 0.2 for perfectly twinned datasets.



## 5 Model quality [i](#)

### 5.1 Standard geometry [i](#)

Bond lengths and bond angles in the following residue types are not validated in this section: NA, MG, C7G, CL

The Z score for a bond length (or angle) is the number of standard deviations the observed value is removed from the expected value. A bond length (or angle) with  $|Z| > 5$  is considered an outlier worth inspection. RMSZ is the root-mean-square of all Z scores of the bond lengths (or angles).

Mol	Chain	Bond lengths		Bond angles	
		RMSZ	$\# Z  > 5$	RMSZ	$\# Z  > 5$
1	A	0.68	0/1395	0.81	0/1881
1	B	0.66	0/1395	0.78	1/1881 (0.1%)
All	All	0.67	0/2790	0.80	1/3762 (0.0%)

There are no bond length outliers.

All (1) bond angle outliers are listed below:

Mol	Chain	Res	Type	Atoms	Z	Observed(°)	Ideal(°)
1	B	40	PRO	N-CA-C	6.28	128.42	112.10

There are no chirality outliers.

There are no planarity outliers.

### 5.2 Too-close contacts [i](#)

In the following table, the Non-H and H(model) columns list the number of non-hydrogen atoms and hydrogen atoms in the chain respectively. The H(added) column lists the number of hydrogen atoms added and optimized by MolProbity. The Clashes column lists the number of clashes within the asymmetric unit, whereas Symm-Clashes lists symmetry related clashes.

Mol	Chain	Non-H	H(model)	H(added)	Clashes	Symm-Clashes
1	A	1370	0	1371	23	1
1	B	1370	0	1377	23	0
2	A	62	0	0	2	0
2	B	62	0	0	7	0
3	A	2	0	0	0	0
3	B	2	0	0	0	0
4	A	1	0	0	0	0
5	A	1	0	0	0	0

*Continued on next page...*



*Continued from previous page...*

Mol	Chain	Non-H	H(model)	H(added)	Clashes	Symm-Clashes
5	B	1	0	0	0	0
6	A	3	0	0	0	0
All	All	2874	0	2748	48	1

The all-atom clashscore is defined as the number of clashes found per 1000 atoms (including hydrogen atoms). The all-atom clashscore for this structure is 9.

All (48) close contacts within the same asymmetric unit are listed below, sorted by their clash magnitude.

Atom-1	Atom-2	Interatomic distance (Å)	Clash overlap (Å)
1:A:96:ARG:HD2	1:A:112:ALA:HB3	1.69	0.75
2:B:401:C7G:O11	2:B:401:C7G:O8	2.09	0.70
1:A:15:LEU:HD23	1:A:19:TRP:CZ2	2.27	0.69
1:A:148:LEU:O	1:A:149:ARG:HB2	1.93	0.67
1:A:20:ARG:HH12	2:A:401:C7G:P3	2.17	0.67
1:B:47:MET:HE3	1:B:56:GLY:O	1.96	0.65
1:A:67:ARG:HH21	1:A:67:ARG:HG2	1.64	0.62
1:A:15:LEU:HD23	1:A:19:TRP:CE2	2.37	0.60
1:A:96:ARG:HD2	1:A:112:ALA:CB	2.30	0.60
1:B:34:MET:HG2	1:B:40:PRO:HA	1.83	0.59
1:B:152:VAL:O	1:B:157:THR:OG1	2.22	0.57
1:B:145:LEU:HA	1:B:155:LEU:HD22	1.85	0.56
1:B:61:PHE:CE1	2:B:401:C7G:C9	2.89	0.56
1:B:58:PRO:HB2	1:B:77:LEU:CD2	2.36	0.55
1:B:155:LEU:HB3	1:B:156:PRO:HD3	1.90	0.54
1:A:20:ARG:NH1	2:A:401:C7G:P3	2.82	0.52
1:B:45:ILE:HD12	1:B:145:LEU:HD21	1.91	0.52
1:A:147:THR:O	1:A:148:LEU:HD12	2.10	0.51
2:B:401:C7G:C19	2:B:401:C7G:C22	2.88	0.50
1:B:77:LEU:O	1:B:81:LEU:HB2	2.12	0.50
1:A:20:ARG:HB2	1:A:106:VAL:HG22	1.95	0.48
1:A:67:ARG:HG2	1:A:67:ARG:NH2	2.29	0.48
1:B:66:ASP:OD2	1:B:75:ARG:NH2	2.48	0.46
1:B:76:GLU:O	1:B:80:GLU:HG3	2.16	0.46
1:A:91:GLU:O	1:A:92:ARG:HB3	2.16	0.46
1:B:47:MET:CE	1:B:56:GLY:O	2.64	0.46
2:B:401:C7G:P	2:B:401:C7G:C10	3.04	0.46
1:A:4:ALA:HB1	1:A:100:VAL:O	2.15	0.45
1:B:61:PHE:HE1	2:B:401:C7G:C9	2.29	0.45
1:A:95:TYR:OH	1:A:98:SER:OG	2.21	0.45
1:B:127:ALA:CB	1:B:140:LEU:HD12	2.47	0.44

*Continued on next page...*



Continued from previous page...

Atom-1	Atom-2	Interatomic distance (Å)	Clash overlap (Å)
1:A:147:THR:OG1	1:A:147:THR:O	2.30	0.44
2:B:401:C7G:C19	2:B:401:C7G:C23	2.95	0.44
1:B:75:ARG:NH1	1:B:76:GLU:OE2	2.51	0.44
1:A:101:GLY:N	1:A:106:VAL:O	2.50	0.44
1:A:49:MET:CB	1:B:141:VAL:HG11	2.48	0.43
1:B:158:PHE:O	1:B:158:PHE:CD1	2.72	0.42
1:A:29:ALA:HB3	1:A:120:LEU:HD13	2.02	0.42
1:A:67:ARG:NH2	1:A:67:ARG:CG	2.81	0.42
1:B:152:VAL:O	1:B:153:GLY:O	2.39	0.41
1:A:49:MET:HB2	1:B:141:VAL:HG11	2.02	0.41
1:A:49:MET:HB3	1:B:141:VAL:CG1	2.51	0.41
1:A:15:LEU:HB3	1:A:19:TRP:CD1	2.56	0.41
1:A:103:GLY:HA3	1:A:106:VAL:HG21	2.03	0.41
1:B:144:PRO:O	1:B:155:LEU:HD13	2.21	0.41
1:B:119:GLU:O	1:B:123:VAL:HG23	2.21	0.40
2:B:401:C7G:C23	2:B:401:C7G:O19	2.69	0.40
1:B:158:PHE:CD1	1:B:158:PHE:C	2.94	0.40

All (1) symmetry-related close contacts are listed below. The label for Atom-2 includes the symmetry operator and encoded unit-cell translations to be applied.

Atom-1	Atom-2	Interatomic distance (Å)	Clash overlap (Å)
1:A:63:ASP:OD1	1:A:67:ARG:NH1[2_656]	1.91	0.29

## 5.3 Torsion angles [i](#)

### 5.3.1 Protein backbone [i](#)

In the following table, the Percentiles column shows the percent Ramachandran outliers of the chain as a percentile score with respect to all X-ray entries followed by that with respect to entries of similar resolution.

The Analysed column shows the number of residues for which the backbone conformation was analysed, and the total number of residues.

Mol	Chain	Analysed	Favoured	Allowed	Outliers	Percentiles	
1	A	172/195 (88%)	156 (91%)	13 (8%)	3 (2%)	10	46
1	B	171/195 (88%)	156 (91%)	8 (5%)	7 (4%)	3	23
All	All	343/390 (88%)	312 (91%)	21 (6%)	10 (3%)	5	32



All (10) Ramachandran outliers are listed below:

Mol	Chain	Res	Type
1	B	153	GLY
1	A	165	GLY
1	A	179	GLY
1	B	42	ARG
1	B	65	GLN
1	B	165	GLY
1	A	149	ARG
1	B	40	PRO
1	B	41	LEU
1	B	63	ASP

### 5.3.2 Protein sidechains ⓘ

In the following table, the Percentiles column shows the percent sidechain outliers of the chain as a percentile score with respect to all X-ray entries followed by that with respect to entries of similar resolution.

The Analysed column shows the number of residues for which the sidechain conformation was analysed, and the total number of residues.

Mol	Chain	Analysed	Rotameric	Outliers	Percentiles	
1	A	137/151 (91%)	134 (98%)	3 (2%)	55	82
1	B	138/151 (91%)	127 (92%)	11 (8%)	13	46
All	All	275/302 (91%)	261 (95%)	14 (5%)	26	64

All (14) residues with a non-rotameric sidechain are listed below:

Mol	Chain	Res	Type
1	A	67	ARG
1	A	147	THR
1	A	148	LEU
1	B	13	LEU
1	B	41	LEU
1	B	47	MET
1	B	136	GLU
1	B	141	VAL
1	B	159	LEU
1	B	160	GLU
1	B	162	SER
1	B	173	GLU
1	B	178	LEU

*Continued on next page...*



*Continued from previous page...*

Mol	Chain	Res	Type
1	B	181	LEU

Some sidechains can be flipped to improve hydrogen bonding and reduce clashes. All (1) such sidechains are listed below:

Mol	Chain	Res	Type
1	A	170	GLN

### 5.3.3 RNA ⓘ

There are no RNA molecules in this entry.

## 5.4 Non-standard residues in protein, DNA, RNA chains ⓘ

There are no non-standard protein/DNA/RNA residues in this entry.

## 5.5 Carbohydrates ⓘ

There are no carbohydrates in this entry.

## 5.6 Ligand geometry ⓘ

Of 9 ligands modelled in this entry, 7 are monoatomic - leaving 2 for Mogul analysis.

In the following table, the Counts columns list the number of bonds (or angles) for which Mogul statistics could be retrieved, the number of bonds (or angles) that are observed in the model and the number of bonds (or angles) that are defined in the Chemical Component Dictionary. The Link column lists molecule types, if any, to which the group is linked. The Z score for a bond length (or angle) is the number of standard deviations the observed value is removed from the expected value. A bond length (or angle) with  $|Z| > 2$  is considered an outlier worth inspection. RMSZ is the root-mean-square of all Z scores of the bond lengths (or angles).

Mol	Type	Chain	Res	Link	Bond lengths			Bond angles		
					Counts	RMSZ	# Z  > 2	Counts	RMSZ	# Z  > 2
2	C7G	A	401	3	57,68,68	1.15	5 (8%)	68,106,106	1.39	12 (17%)
2	C7G	B	401	3	57,68,68	0.99	2 (3%)	68,106,106	1.57	8 (11%)

In the following table, the Chirals column lists the number of chiral outliers, the number of chiral centers analysed, the number of these observed in the model and the number defined in the Chemical Component Dictionary. Similar counts are reported in the Torsion and Rings columns.



'-' means no outliers of that kind were identified.

Mol	Type	Chain	Res	Link	Chirals	Torsions	Rings
2	C7G	A	401	3	-	0/34/90/90	0/7/7/7
2	C7G	B	401	3	-	0/34/90/90	0/7/7/7

All (7) bond length outliers are listed below:

Mol	Chain	Res	Type	Atoms	Z	Observed(Å)	Ideal(Å)
2	A	401	C7G	C15-N6	2.12	1.35	1.32
2	A	401	C7G	O-C5	2.44	1.44	1.41
2	A	401	C7G	O14-C20	2.59	1.44	1.41
2	B	401	C7G	C17-C16	2.93	1.47	1.40
2	B	401	C7G	C2-C1	3.13	1.47	1.40
2	A	401	C7G	C17-C16	3.24	1.47	1.40
2	A	401	C7G	C2-C1	3.45	1.48	1.40

All (20) bond angle outliers are listed below:

Mol	Chain	Res	Type	Atoms	Z	Observed(°)	Ideal(°)
2	B	401	C7G	P2-O19-P3	-6.13	113.08	132.57
2	B	401	C7G	P1-O6-P	-4.58	118.01	132.57
2	B	401	C7G	C23-O14-C20	-3.96	105.70	109.83
2	A	401	C7G	N6-C15-N5	-3.93	122.34	128.68
2	A	401	C7G	N1-C-N	-3.89	122.41	128.68
2	B	401	C7G	N6-C15-N5	-3.65	122.80	128.68
2	A	401	C7G	C8-O-C5	-3.20	106.49	109.83
2	B	401	C7G	N1-C-N	-2.99	123.86	128.68
2	B	401	C7G	C16-C17-N9	-2.73	106.55	109.40
2	A	401	C7G	C16-C17-N9	-2.46	106.84	109.40
2	B	401	C7G	O14-C20-C21	-2.33	102.57	106.60
2	A	401	C7G	P2-O19-P3	-2.23	125.48	132.57
2	A	401	C7G	P1-O6-P	-2.19	125.61	132.57
2	A	401	C7G	O13-C12-O10	-2.12	109.14	111.43
2	B	401	C7G	C15-N5-C18	2.03	122.29	118.77
2	A	401	C7G	O13-C12-C13	2.18	112.48	107.96
2	A	401	C7G	O10-C12-C13	2.29	107.93	104.98
2	A	401	C7G	C-N-C3	2.37	122.87	118.77
2	A	401	C7G	C12-C13-C14	2.42	105.36	102.30
2	A	401	C7G	N2-C3-N	2.45	123.65	118.57

There are no chirality outliers.

There are no torsion outliers.

There are no ring outliers.



2 monomers are involved in 9 short contacts:

Mol	Chain	Res	Type	Clashes	Symm-Clashes
2	A	401	C7G	2	0
2	B	401	C7G	7	0

## 5.7 Other polymers [i](#)

There are no such residues in this entry.

## 5.8 Polymer linkage issues [i](#)

There are no chain breaks in this entry.



## 6 Fit of model and data [i](#)

### 6.1 Protein, DNA and RNA chains [i](#)

In the following table, the column labelled ‘#RSRZ> 2’ contains the number (and percentage) of RSRZ outliers, followed by percent RSRZ outliers for the chain as percentile scores relative to all X-ray entries and entries of similar resolution. The OWAB column contains the minimum, median, 95<sup>th</sup> percentile and maximum values of the occupancy-weighted average B-factor per residue. The column labelled ‘Q< 0.9’ lists the number of (and percentage) of residues with an average occupancy less than 0.9.

Mol	Chain	Analysed	<RSRZ>	#RSRZ>2			OWAB(Å <sup>2</sup> )	Q<0.9
1	A	176/195 (90%)	0.10	9 (5%)	28	16	31, 50, 81, 117	0
1	B	175/195 (89%)	0.03	6 (3%)	45	30	25, 51, 80, 106	1 (0%)
All	All	351/390 (90%)	0.07	15 (4%)	35	22	25, 51, 81, 117	1 (0%)

All (15) RSRZ outliers are listed below:

Mol	Chain	Res	Type	RSRZ
1	A	104	PRO	3.6
1	A	179	GLY	3.6
1	B	178	LEU	3.3
1	B	65	GLN	3.1
1	A	102	SER	2.9
1	B	64	THR	2.7
1	A	10	GLY	2.7
1	A	64	THR	2.3
1	B	17	SER	2.3
1	B	66	ASP	2.3
1	A	3	GLY	2.2
1	A	101	GLY	2.2
1	B	177	ASP	2.1
1	A	118	GLU	2.1
1	A	40	PRO	2.0

### 6.2 Non-standard residues in protein, DNA, RNA chains [i](#)

There are no non-standard protein/DNA/RNA residues in this entry.

### 6.3 Carbohydrates [i](#)

There are no carbohydrates in this entry.



## 6.4 Ligands [i](#)

In the following table, the Atoms column lists the number of modelled atoms in the group and the number defined in the chemical component dictionary. The B-factors column lists the minimum, median, 95<sup>th</sup> percentile and maximum values of B factors of atoms in the group. The column labelled 'Q< 0.9' lists the number of atoms with occupancy less than 0.9.

Mol	Type	Chain	Res	Atoms	RSCC	RSR	B-factors(Å <sup>2</sup> )	Q<0.9
5	NA	A	405	1/1	0.86	0.22	23,23,23,23	0
2	C7G	B	401	62/62	0.88	0.21	38,69,110,122	0
2	C7G	A	401	62/62	0.88	0.22	37,54,167,185	0
4	CL	A	404	1/1	0.89	0.14	47,47,47,47	0
5	NA	B	404	1/1	0.92	0.26	25,25,25,25	0
3	MG	A	402	1/1	0.93	0.22	16,16,16,16	0
3	MG	B	402	1/1	0.96	0.10	29,29,29,29	0
3	MG	B	403	1/1	0.96	0.16	15,15,15,15	0
3	MG	A	403	1/1	0.98	0.14	12,12,12,12	0

## 6.5 Other polymers [i](#)

There are no such residues in this entry.