



# wwPDB X-ray Structure Validation Summary Report ⓘ

Mar 8, 2018 – 08:32 pm GMT

PDB ID : 1B3O  
Title : TERNARY COMPLEX OF HUMAN TYPE-II INOSINE MONOPHOSPHATE DEHYDROGENASE WITH 6-CL-IMP AND SELENAZOLE ADENINE DINUCLEOTIDE  
Authors : Colby, T.D.; Vanderveen, K.; Strickler, M.D.; Goldstein, B.M.  
Deposited on : 1998-12-14  
Resolution : 2.90 Å(reported)

This is a wwPDB X-ray Structure Validation Summary Report for a publicly released PDB entry.

We welcome your comments at [validation@mail.wwpdb.org](mailto:validation@mail.wwpdb.org)

A user guide is available at

<https://www.wwpdb.org/validation/2017/XrayValidationReportHelp>

with specific help available everywhere you see the ⓘ symbol.

---

The following versions of software and data (see [references ⓘ](#)) were used in the production of this report:

MolProbity : 4.02b-467  
Mogul : 1.7.3 (157068), CSD as539be (2018)  
Xtriage (Phenix) : 1.13  
EDS : trunk30967  
Percentile statistics : 20171227.v01 (using entries in the PDB archive December 27th 2017)  
Refmac : 5.8.0158  
CCP4 : 7.0 (Gargrove)  
Ideal geometry (proteins) : Engh & Huber (2001)  
Ideal geometry (DNA, RNA) : Parkinson et al. (1996)  
Validation Pipeline (wwPDB-VP) : trunk30967

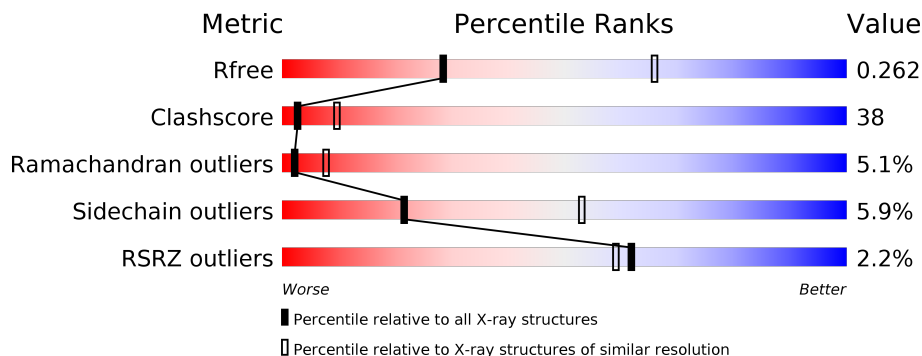
# 1 Overall quality at a glance

The following experimental techniques were used to determine the structure:

## *X-RAY DIFFRACTION*

The reported resolution of this entry is 2.90 Å.

Percentile scores (ranging between 0-100) for global validation metrics of the entry are shown in the following graphic. The table shows the number of entries on which the scores are based.



Metric	Whole archive (#Entries)	Similar resolution (#Entries, resolution range(Å))
$R_{free}$	111664	1716 (2.90-2.90)
Clashscore	122126	1924 (2.90-2.90)
Ramachandran outliers	120053	1884 (2.90-2.90)
Sidechain outliers	120020	1886 (2.90-2.90)
RSRZ outliers	108989	1669 (2.90-2.90)

The table below summarises the geometric issues observed across the polymeric chains and their fit to the electron density. The red, orange, yellow and green segments on the lower bar indicate the fraction of residues that contain outliers for  $\geq 3$ , 2, 1 and 0 types of geometric quality criteria. A grey segment represents the fraction of residues that are not modelled. The numeric value for each fraction is indicated below the corresponding segment, with a dot representing fractions  $\leq 5\%$ . The upper red bar (where present) indicates the fraction of residues that have poor fit to the electron density. The numeric value is given above the bar.

Mol	Chain	Length	Quality of chain
1	A	514	<div> <div> <div></div> <div>35%</div> <div>22%</div> <div>•</div> <div>40%</div> </div> </div>
1	B	514	<div> <div> <div>2%</div> <div>38%</div> <div>35%</div> <div>7%</div> <div>•</div> <div>19%</div> </div> </div>

## 2 Entry composition [i](#)

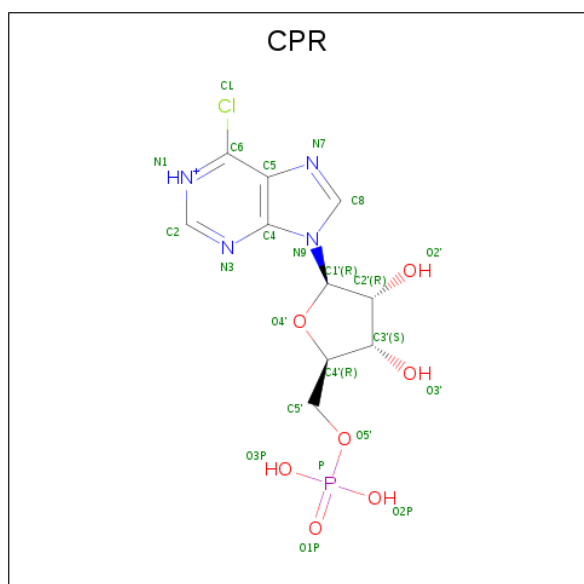
There are 5 unique types of molecules in this entry. The entry contains 5536 atoms, of which 0 are hydrogens and 0 are deuteriums.

In the tables below, the ZeroOcc column contains the number of atoms modelled with zero occupancy, the AltConf column contains the number of residues with at least one atom in alternate conformation and the Trace column contains the number of residues modelled with at most 2 atoms.

- Molecule 1 is a protein called PROTEIN (INOSINE MONOPHOSPHATE DEHYDROGENASE 2).

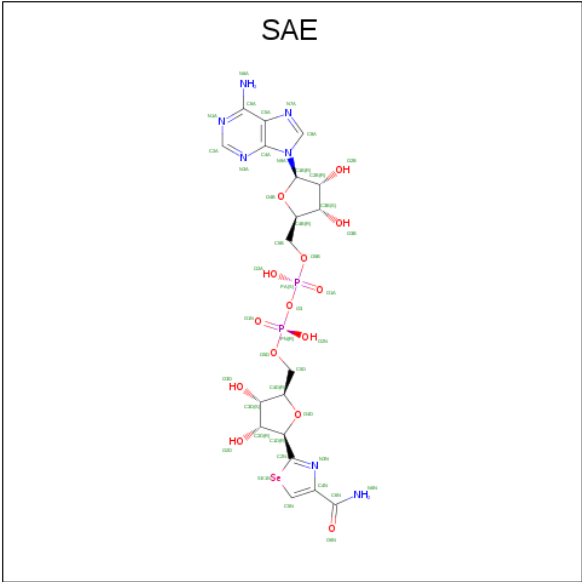
Mol	Chain	Residues	Atoms					ZeroOcc	AltConf	Trace
1	A	307	Total	C	N	O	S	0	0	3
			2275	1434	389	439	13			
1	B	414	Total	C	N	O	S	0	0	4
			3085	1941	535	591	18			

- Molecule 2 is 6-CHLOROPURINE RIBOSIDE, 5'-MONOPHOSPHATE (three-letter code: CPR) (formula:  $C_{10}H_{13}ClN_4O_7P$ ).



Mol	Chain	Residues	Atoms					ZeroOcc	AltConf
2	A	1	Total	C	N	O	P	0	0
			22	10	4	7	1		
2	B	1	Total	C	N	O	P	0	0
			22	10	4	7	1		

- Molecule 3 is SELENAZOLE-4-CARBOXYAMIDE-ADENINE DINUCLEOTIDE (three-letter code: SAE) (formula:  $C_{19}H_{25}N_7O_{14}P_2Se$ ).



Mol	Chain	Residues	Atoms						ZeroOcc	AltConf
3	A	1	Total	C	N	O	P	Se	0	0
			43	19	7	14	2	1		
3	B	1	Total	C	N	O	P	Se	0	0
			43	19	7	14	2	1		

- Molecule 4 is UNKNOWN ATOM OR ION (three-letter code: UNX) (formula: X).

Mol	Chain	Residues	Atoms		ZeroOcc	AltConf
4	B	15	Total	X	15	0
			15	15		

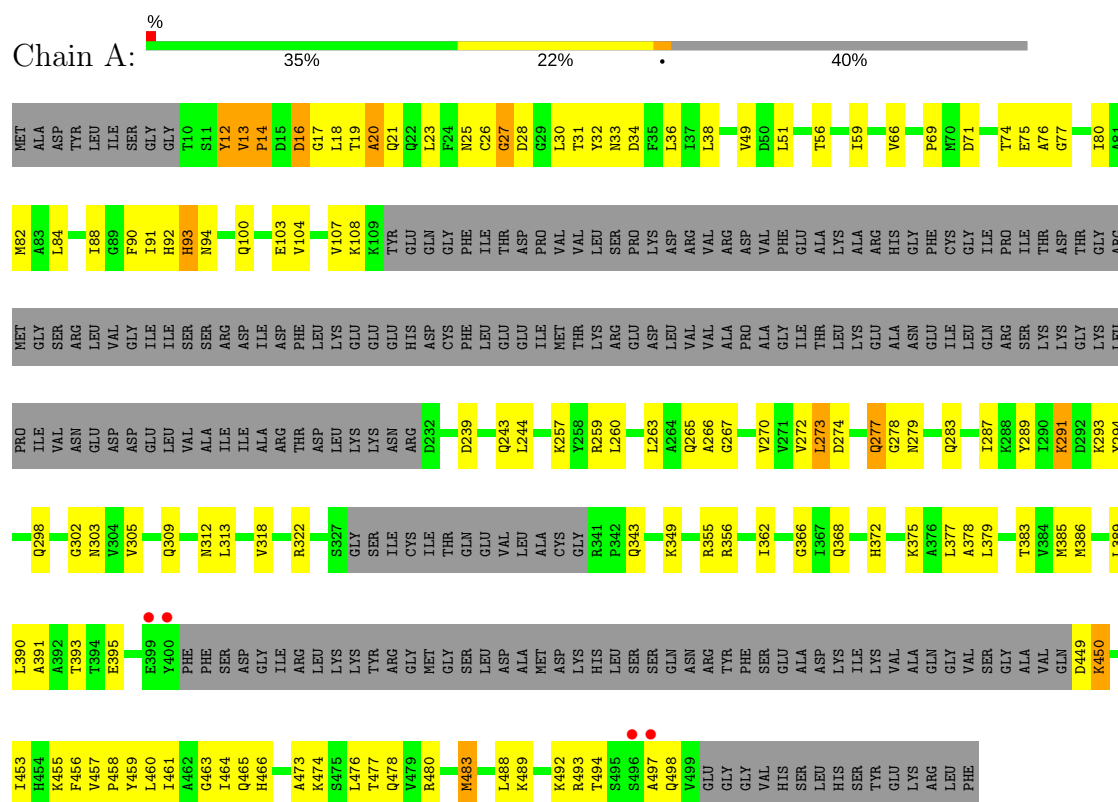
- Molecule 5 is water.

Mol	Chain	Residues	Atoms		ZeroOcc	AltConf
5	A	11	Total	O	0	0
			11	11		
5	B	20	Total	O	0	0
			20	20		

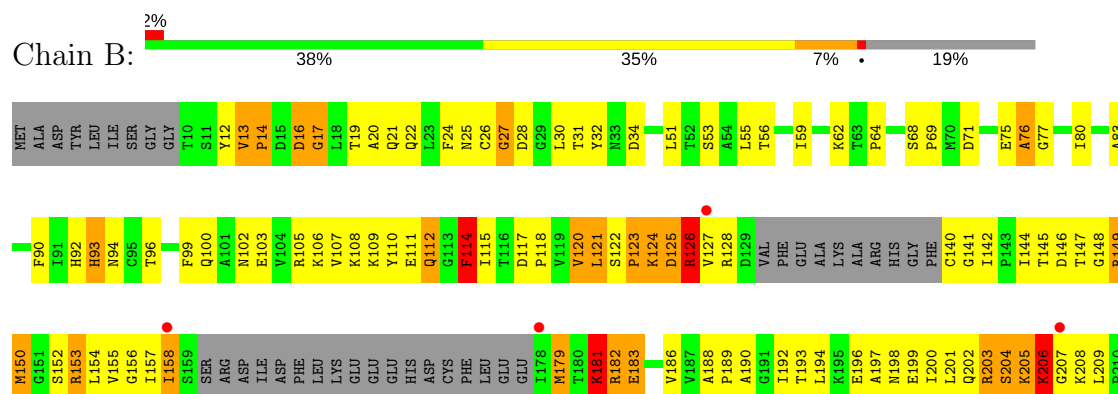
### 3 Residue-property plots

These plots are drawn for all protein, RNA and DNA chains in the entry. The first graphic for a chain summarises the proportions of the various outlier classes displayed in the second graphic. The second graphic shows the sequence view annotated by issues in geometry and electron density. Residues are color-coded according to the number of geometric quality criteria for which they contain at least one outlier: green = 0, yellow = 1, orange = 2 and red = 3 or more. A red dot above a residue indicates a poor fit to the electron density ( $RSRZ > 2$ ). Stretches of 2 or more consecutive residues without any outlier are shown as a green connector. Residues present in the sample, but not in the model, are shown in grey.

#### • Molecule 1: PROTEIN (INOSINE MONOPHOSPHATE DEHYDROGENASE 2)



#### • Molecule 1: PROTEIN (INOSINE MONOPHOSPHATE DEHYDROGENASE 2)





## 4 Data and refinement statistics

Property	Value	Source
Space group	I 4	Depositor
Cell constants a, b, c, $\alpha$ , $\beta$ , $\gamma$	142.26Å 142.26Å 174.94Å 90.00° 90.00° 90.00°	Depositor
Resolution (Å)	100.00 – 2.90 29.69 – 2.86	Depositor EDS
% Data completeness (in resolution range)	86.4 (100.00-2.90) 84.4 (29.69-2.86)	Depositor EDS
$R_{merge}$	0.10	Depositor
$R_{sym}$	0.10	Depositor
$\langle I/\sigma(I) \rangle$ <sup>1</sup>	2.15 (at 2.85Å)	Xtriage
Refinement program	CNS 0.3	Depositor
R, $R_{free}$	0.244 , 0.270 0.234 , 0.262	Depositor DCC
$R_{free}$ test set	3253 reflections (9.62%)	wwPDB-VP
Wilson B-factor (Å <sup>2</sup> )	44.3	Xtriage
Anisotropy	0.068	Xtriage
Bulk solvent $k_{sol}$ (e/Å <sup>3</sup> ), $B_{sol}$ (Å <sup>2</sup> )	0.29 , 4.8	EDS
L-test for twinning <sup>2</sup>	$\langle  L  \rangle = 0.48$ , $\langle L^2 \rangle = 0.31$	Xtriage
Estimated twinning fraction	0.039 for -h,k,-l	Xtriage
$F_o, F_c$ correlation	0.89	EDS
Total number of atoms	5536	wwPDB-VP
Average B, all atoms (Å <sup>2</sup> )	38.0	wwPDB-VP

Xtriage's analysis on translational NCS is as follows: *The largest off-origin peak in the Patterson function is 3.18% of the height of the origin peak. No significant pseudotranslation is detected.*

<sup>1</sup>Intensities estimated from amplitudes.

<sup>2</sup>Theoretical values of  $\langle |L| \rangle$ ,  $\langle L^2 \rangle$  for acentric reflections are 0.5, 0.333 respectively for untwinned datasets, and 0.375, 0.2 for perfectly twinned datasets.

## 5 Model quality [i](#)

### 5.1 Standard geometry [i](#)

Bond lengths and bond angles in the following residue types are not validated in this section: UNX, CPR, SAE

The Z score for a bond length (or angle) is the number of standard deviations the observed value is removed from the expected value. A bond length (or angle) with  $|Z| > 5$  is considered an outlier worth inspection. RMSZ is the root-mean-square of all Z scores of the bond lengths (or angles).

Mol	Chain	Bond lengths		Bond angles	
		RMSZ	$\# Z  > 5$	RMSZ	$\# Z  > 5$
1	A	0.49	0/2308	0.77	0/3122
1	B	0.58	0/3125	0.85	2/4224 (0.0%)
All	All	0.54	0/5433	0.82	2/7346 (0.0%)

Chiral center outliers are detected by calculating the chiral volume of a chiral center and verifying if the center is modelled as a planar moiety or with the opposite hand. A planarity outlier is detected by checking planarity of atoms in a peptide group, atoms in a mainchain group or atoms of a sidechain that are expected to be planar.

Mol	Chain	#Chirality outliers	#Planarity outliers
1	A	0	1

There are no bond length outliers.

All (2) bond angle outliers are listed below:

Mol	Chain	Res	Type	Atoms	Z	Observed( $^{\circ}$ )	Ideal( $^{\circ}$ )
1	B	181	LYS	N-CA-C	6.40	128.27	111.00
1	B	231	ARG	NE-CZ-NH1	-5.02	117.79	120.30

There are no chirality outliers.

All (1) planarity outliers are listed below:

Mol	Chain	Res	Type	Group
1	A	12	TYR	Sidechain

### 5.2 Too-close contacts [i](#)

In the following table, the Non-H and H(model) columns list the number of non-hydrogen atoms and hydrogen atoms in the chain respectively. The H(added) column lists the number of hydrogen



atoms added and optimized by MolProbity. The Clashes column lists the number of clashes within the asymmetric unit, whereas Symm-Clashes lists symmetry related clashes.

Mol	Chain	Non-H	H(model)	H(added)	Clashes	Symm-Clashes
1	A	2275	0	2294	129	0
1	B	3085	0	3161	285	0
2	A	22	0	11	1	0
2	B	22	0	11	2	0
3	A	43	0	23	4	0
3	B	43	0	23	4	0
4	B	15	0	0	0	0
5	A	11	0	0	0	0
5	B	20	0	0	0	0
All	All	5536	0	5523	417	0

The all-atom clashscore is defined as the number of clashes found per 1000 atoms (including hydrogen atoms). The all-atom clashscore for this structure is 38.

The worst 5 of 417 close contacts within the same asymmetric unit are listed below, sorted by their clash magnitude.

Atom-1	Atom-2	Interatomic distance (Å)	Clash overlap (Å)
1:B:105:ARG:HH12	1:B:109:LYS:HG2	1.18	1.06
1:B:181:LYS:HE2	1:B:181:LYS:H	1.20	1.01
1:B:224:ARG:HB3	1:B:227:LEU:HD11	1.46	0.97
1:B:227:LEU:HD13	1:B:228:LYS:N	1.80	0.96
1:B:198:ASN:HA	1:B:201:LEU:HD12	1.44	0.95

There are no symmetry-related clashes.

## 5.3 Torsion angles [i](#)

### 5.3.1 Protein backbone [i](#)

In the following table, the Percentiles column shows the percent Ramachandran outliers of the chain as a percentile score with respect to all X-ray entries followed by that with respect to entries of similar resolution.

The Analysed column shows the number of residues for which the backbone conformation was analysed, and the total number of residues.

Mol	Chain	Analysed	Favoured	Allowed	Outliers	Percentiles
1	A	299/514 (58%)	249 (83%)	39 (13%)	11 (4%)	<b>4</b> <b>15</b>

*Continued on next page...*

*Continued from previous page...*

Mol	Chain	Analysed	Favoured	Allowed	Outliers	Percentiles	
1	B	406/514 (79%)	304 (75%)	77 (19%)	25 (6%)	1	5
All	All	705/1028 (69%)	553 (78%)	116 (16%)	36 (5%)	2	8

5 of 36 Ramachandran outliers are listed below:

Mol	Chain	Res	Type
1	A	13	VAL
1	A	14	PRO
1	A	17	GLY
1	A	76	ALA
1	A	450	LYS

### 5.3.2 Protein sidechains ⓘ

In the following table, the Percentiles column shows the percent sidechain outliers of the chain as a percentile score with respect to all X-ray entries followed by that with respect to entries of similar resolution.

The Analysed column shows the number of residues for which the sidechain conformation was analysed, and the total number of residues.

Mol	Chain	Analysed	Rotameric	Outliers	Percentiles	
1	A	242/420 (58%)	237 (98%)	5 (2%)	56	84
1	B	333/420 (79%)	304 (91%)	29 (9%)	11	33
All	All	575/840 (68%)	541 (94%)	34 (6%)	21	53

5 of 34 residues with a non-rotameric sidechain are listed below:

Mol	Chain	Res	Type
1	B	158	ILE
1	B	183	GLU
1	B	449	ASP
1	B	181	LYS
1	B	93	HIS

Some sidechains can be flipped to improve hydrogen bonding and reduce clashes. 5 of 25 such sidechains are listed below:

Mol	Chain	Res	Type
1	A	478	GLN
1	B	93	HIS

*Continued on next page...*

*Continued from previous page...*

Mol	Chain	Res	Type
1	B	372	HIS
1	B	92	HIS
1	B	94	ASN

### 5.3.3 RNA ⓘ

There are no RNA molecules in this entry.

## 5.4 Non-standard residues in protein, DNA, RNA chains ⓘ

There are no non-standard protein/DNA/RNA residues in this entry.

## 5.5 Carbohydrates ⓘ

There are no carbohydrates in this entry.

## 5.6 Ligand geometry ⓘ

Of 19 ligands modelled in this entry, 15 are unknown - leaving 4 for Mogul analysis.

In the following table, the Counts columns list the number of bonds (or angles) for which Mogul statistics could be retrieved, the number of bonds (or angles) that are observed in the model and the number of bonds (or angles) that are defined in the Chemical Component Dictionary. The Link column lists molecule types, if any, to which the group is linked. The Z score for a bond length (or angle) is the number of standard deviations the observed value is removed from the expected value. A bond length (or angle) with  $|Z| > 2$  is considered an outlier worth inspection. RMSZ is the root-mean-square of all Z scores of the bond lengths (or angles).

Mol	Type	Chain	Res	Link	Bond lengths			Bond angles		
					Counts	RMSZ	# Z  > 2	Counts	RMSZ	# Z  > 2
3	SAE	A	600	-	38,47,47	1.12	2 (5%)	40,72,72	2.55	12 (30%)
2	CPR	A	631	-	20,24,25	1.33	3 (15%)	20,36,38	3.19	6 (30%)
3	SAE	B	601	-	38,47,47	1.13	2 (5%)	40,72,72	2.55	12 (30%)
2	CPR	B	631	1	20,24,25	1.45	5 (25%)	20,36,38	3.04	6 (30%)

In the following table, the Chirals column lists the number of chiral outliers, the number of chiral centers analysed, the number of these observed in the model and the number defined in the Chemical Component Dictionary. Similar counts are reported in the Torsion and Rings columns. '-' means no outliers of that kind were identified.

Mol	Type	Chain	Res	Link	Chirals	Torsions	Rings
3	SAE	A	600	-	-	0/18/62/62	0/5/5/5
2	CPR	A	631	-	-	0/6/26/26	0/3/3/3
3	SAE	B	601	-	-	0/18/62/62	0/5/5/5
2	CPR	B	631	1	-	0/6/26/26	0/3/3/3

The worst 5 of 12 bond length outliers are listed below:

Mol	Chain	Res	Type	Atoms	Z	Observed(Å)	Ideal(Å)
2	B	631	CPR	C5-N7	-2.32	1.31	1.38
2	B	631	CPR	P-O3P	-2.13	1.46	1.54
2	A	631	CPR	C6-N1	2.08	1.36	1.32
2	A	631	CPR	O4'-C1'	2.33	1.44	1.41
3	A	600	SAE	C2A-N3A	2.41	1.36	1.32

The worst 5 of 36 bond angle outliers are listed below:

Mol	Chain	Res	Type	Atoms	Z	Observed(°)	Ideal(°)
3	B	601	SAE	N3A-C2A-N1A	-10.87	119.56	128.86
3	A	600	SAE	N3A-C2A-N1A	-10.83	119.59	128.86
2	B	631	CPR	N1-C2-N3	-8.21	116.87	127.66
2	A	631	CPR	N1-C2-N3	-7.98	117.18	127.66
3	B	601	SAE	C4B-O4B-C1B	-5.51	104.08	109.83

There are no chirality outliers.

There are no torsion outliers.

There are no ring outliers.

4 monomers are involved in 10 short contacts:

Mol	Chain	Res	Type	Clashes	Symm-Clashes
3	A	600	SAE	4	0
2	A	631	CPR	1	0
3	B	601	SAE	4	0
2	B	631	CPR	2	0

## 5.7 Other polymers ⓘ

There are no such residues in this entry.

## 5.8 Polymer linkage issues ⓘ

There are no chain breaks in this entry.

## 6 Fit of model and data [i](#)

### 6.1 Protein, DNA and RNA chains [i](#)

In the following table, the column labelled ‘#RSRZ> 2’ contains the number (and percentage) of RSRZ outliers, followed by percent RSRZ outliers for the chain as percentile scores relative to all X-ray entries and entries of similar resolution. The OWAB column contains the minimum, median, 95<sup>th</sup> percentile and maximum values of the occupancy-weighted average B-factor per residue. The column labelled ‘Q< 0.9’ lists the number of (and percentage) of residues with an average occupancy less than 0.9.

Mol	Chain	Analysed	<RSRZ>	#RSRZ>2	OWAB(Å <sup>2</sup> )	Q<0.9
1	A	307/514 (59%)	-0.05	4 (1%) 77 76	12, 32, 55, 88	0
1	B	414/514 (80%)	0.12	12 (2%) 51 46	14, 35, 81, 95	0
All	All	721/1028 (70%)	0.05	16 (2%) 62 59	12, 34, 78, 95	0

The worst 5 of 16 RSRZ outliers are listed below:

Mol	Chain	Res	Type	RSRZ
1	A	497	ALA	4.6
1	A	400	TYR	4.4
1	B	497	ALA	3.9
1	B	228	LYS	3.3
1	B	498	GLN	3.0

### 6.2 Non-standard residues in protein, DNA, RNA chains [i](#)

There are no non-standard protein/DNA/RNA residues in this entry.

### 6.3 Carbohydrates [i](#)

There are no carbohydrates in this entry.

### 6.4 Ligands [i](#)

In the following table, the Atoms column lists the number of modelled atoms in the group and the number defined in the chemical component dictionary. The B-factors column lists the minimum, median, 95<sup>th</sup> percentile and maximum values of B factors of atoms in the group. The column labelled ‘Q< 0.9’ lists the number of atoms with occupancy less than 0.9.

Mol	Type	Chain	Res	Atoms	RSCC	RSR	B-factors( $\text{\AA}^2$ )	Q<0.9
4	UNX	B	639	1/1	-	-	20,20,20,20	1
4	UNX	B	641	1/1	-	-	20,20,20,20	1
4	UNX	B	643	1/1	-	-	20,20,20,20	1
4	UNX	B	644	1/1	-	-	20,20,20,20	1
4	UNX	B	637	1/1	-	-	20,20,20,20	1
4	UNX	B	640	1/1	-	-	20,20,20,20	1
4	UNX	B	633	1/1	-	-	20,20,20,20	1
3	SAE	B	601	43/43	0.86	0.26	54,76,87,89	43
2	CPR	A	631	22/23	0.95	0.18	30,36,55,57	0
4	UNX	B	642	1/1	-	-	20,20,20,20	1
4	UNX	B	646	1/1	-	-	20,20,20,20	1
2	CPR	B	631	22/23	0.97	0.17	26,31,53,54	0
4	UNX	B	638	1/1	-	-	20,20,20,20	1
4	UNX	B	636	1/1	-	-	20,20,20,20	1
3	SAE	A	600	43/43	0.88	0.30	55,71,91,96	43
4	UNX	B	635	1/1	-	-	20,20,20,20	1
4	UNX	B	634	1/1	-	-	20,20,20,20	1
4	UNX	B	645	1/1	-	-	20,20,20,20	1
4	UNX	B	632	1/1	-	-	20,20,20,20	1

## 6.5 Other polymers [i](#)

There are no such residues in this entry.