



# Full wwPDB X-ray Structure Validation Report ⓘ

Mar 9, 2018 – 12:39 am GMT

PDB ID : 6B3B  
Title : AprA Methyltransferase 1 - GNAT in complex with Mn<sup>2+</sup> , SAM, and Malonate  
Authors : Skiba, M.A.; Smith, J.L.  
Deposited on : 2017-09-21  
Resolution : 1.85 Å(reported)

This is a Full wwPDB X-ray Structure Validation Report for a publicly released PDB entry.

We welcome your comments at [validation@mail.wwpdb.org](mailto:validation@mail.wwpdb.org)

A user guide is available at

<https://www.wwpdb.org/validation/2017/XrayValidationReportHelp>

with specific help available everywhere you see the ⓘ symbol.

---

The following versions of software and data (see [references ⓘ](#)) were used in the production of this report:

MolProbity : 4.02b-467  
Mogul : 1.7.3 (157068), CSD as539be (2018)  
Xtriage (Phenix) : 1.13  
EDS : trunk30967  
Percentile statistics : 20171227.v01 (using entries in the PDB archive December 27th 2017)  
Refmac : 5.8.0158  
CCP4 : 7.0 (Gargrove)  
Ideal geometry (proteins) : Engh & Huber (2001)  
Ideal geometry (DNA, RNA) : Parkinson et al. (1996)  
Validation Pipeline (wwPDB-VP) : trunk30967

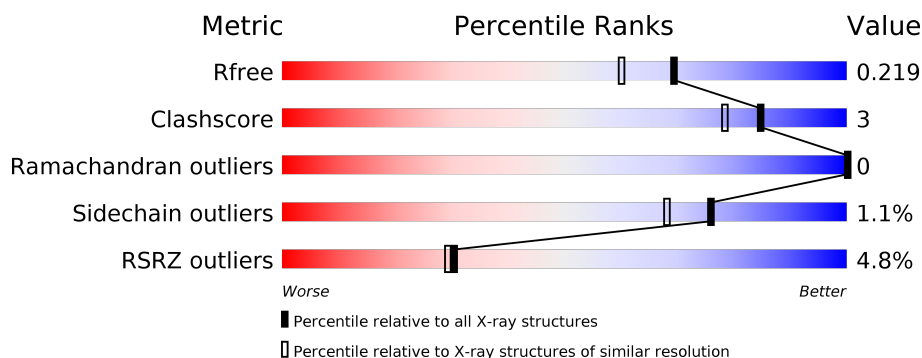
# 1 Overall quality at a glance

The following experimental techniques were used to determine the structure:

## *X-RAY DIFFRACTION*

The reported resolution of this entry is 1.85 Å.

Percentile scores (ranging between 0-100) for global validation metrics of the entry are shown in the following graphic. The table shows the number of entries on which the scores are based.



Metric	Whole archive (#Entries)	Similar resolution (#Entries, resolution range(Å))
$R_{free}$	111664	2111 (1.86-1.86)
Clashscore	122126	2258 (1.86-1.86)
Ramachandran outliers	120053	2234 (1.86-1.86)
Sidechain outliers	120020	2234 (1.86-1.86)
RSRZ outliers	108989	2075 (1.86-1.86)

The table below summarises the geometric issues observed across the polymeric chains and their fit to the electron density. The red, orange, yellow and green segments on the lower bar indicate the fraction of residues that contain outliers for  $\geq 3$ , 2, 1 and 0 types of geometric quality criteria. A grey segment represents the fraction of residues that are not modelled. The numeric value for each fraction is indicated below the corresponding segment, with a dot representing fractions  $\leq 5\%$ . The upper red bar (where present) indicates the fraction of residues that have poor fit to the electron density. The numeric value is given above the bar.

Mol	Chain	Length	Quality of chain
1	A	652	<div> <div>5%</div> <div>88%</div> <div>7%</div> <div>.</div> </div>

## 2 Entry composition

There are 6 unique types of molecules in this entry. The entry contains 5559 atoms, of which 0 are hydrogens and 0 are deuteriums.

In the tables below, the ZeroOcc column contains the number of atoms modelled with zero occupancy, the AltConf column contains the number of residues with at least one atom in alternate conformation and the Trace column contains the number of residues modelled with at most 2 atoms.

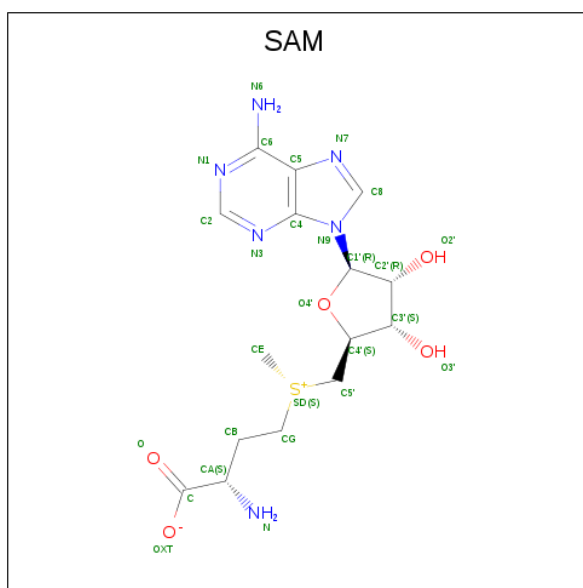
- Molecule 1 is a protein called AprA Methyltransferase 1.

Mol	Chain	Residues	Atoms					ZeroOcc	AltConf	Trace
			Total	C	N	O	S			
1	A	624	5071	3265	857	934	15	0	4	0

There are 26 discrepancies between the modelled and reference sequences:

Chain	Residue	Modelled	Actual	Comment	Reference
A	-22	MET	-	expression tag	UNP A0A1U7N2Z8
A	-21	HIS	-	expression tag	UNP A0A1U7N2Z8
A	-20	HIS	-	expression tag	UNP A0A1U7N2Z8
A	-19	HIS	-	expression tag	UNP A0A1U7N2Z8
A	-18	HIS	-	expression tag	UNP A0A1U7N2Z8
A	-17	HIS	-	expression tag	UNP A0A1U7N2Z8
A	-16	HIS	-	expression tag	UNP A0A1U7N2Z8
A	-15	SER	-	expression tag	UNP A0A1U7N2Z8
A	-14	SER	-	expression tag	UNP A0A1U7N2Z8
A	-13	GLY	-	expression tag	UNP A0A1U7N2Z8
A	-12	VAL	-	expression tag	UNP A0A1U7N2Z8
A	-11	ASP	-	expression tag	UNP A0A1U7N2Z8
A	-10	LEU	-	expression tag	UNP A0A1U7N2Z8
A	-9	GLY	-	expression tag	UNP A0A1U7N2Z8
A	-8	THR	-	expression tag	UNP A0A1U7N2Z8
A	-7	GLU	-	expression tag	UNP A0A1U7N2Z8
A	-6	ASN	-	expression tag	UNP A0A1U7N2Z8
A	-5	LEU	-	expression tag	UNP A0A1U7N2Z8
A	-4	TYR	-	expression tag	UNP A0A1U7N2Z8
A	-3	PHE	-	expression tag	UNP A0A1U7N2Z8
A	-2	GLN	-	expression tag	UNP A0A1U7N2Z8
A	-1	SER	-	expression tag	UNP A0A1U7N2Z8
A	0	ASN	-	expression tag	UNP A0A1U7N2Z8
A	1	ALA	-	expression tag	UNP A0A1U7N2Z8
A	274	ILE	SER	engineered mutation	UNP A0A1U7N2Z8
A	528	PRO	GLN	engineered mutation	UNP A0A1U7N2Z8

- Molecule 2 is S-ADENOSYLMETHIONINE (three-letter code: SAM) (formula:  $C_{15}H_{22}N_6O_5S$ ).

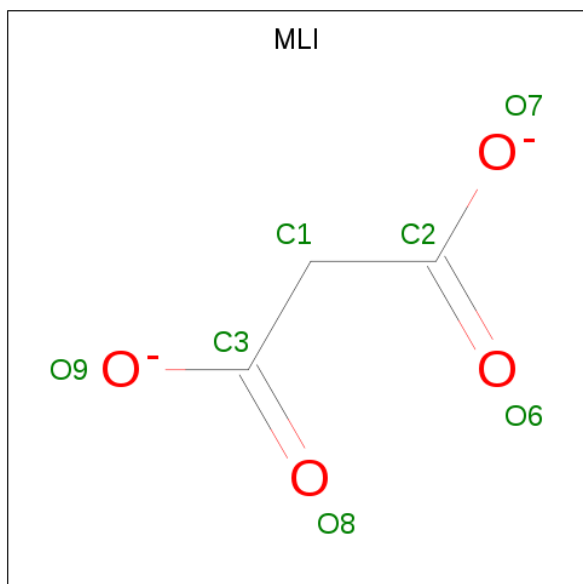


Mol	Chain	Residues	Atoms					ZeroOcc	AltConf
2	A	1	Total	C	N	O	S	0	0
			27	15	6	5	1		

- Molecule 3 is MANGANESE (II) ION (three-letter code: MN) (formula: Mn).

Mol	Chain	Residues	Atoms		ZeroOcc	AltConf
3	A	1	Total	Mn	0	0
			1	1		

- Molecule 4 is MALONATE ION (three-letter code: MLI) (formula:  $C_3H_2O_4$ ).



Mol	Chain	Residues	Atoms			ZeroOcc	AltConf
4	A	1	Total	C	O	0	0
			7	3	4		

- Molecule 5 is GLYCEROL (three-letter code: GOL) (formula:  $C_3H_8O_3$ ).



Mol	Chain	Residues	Atoms			ZeroOcc	AltConf
5	A	1	Total	C	O	0	0
			6	3	3		

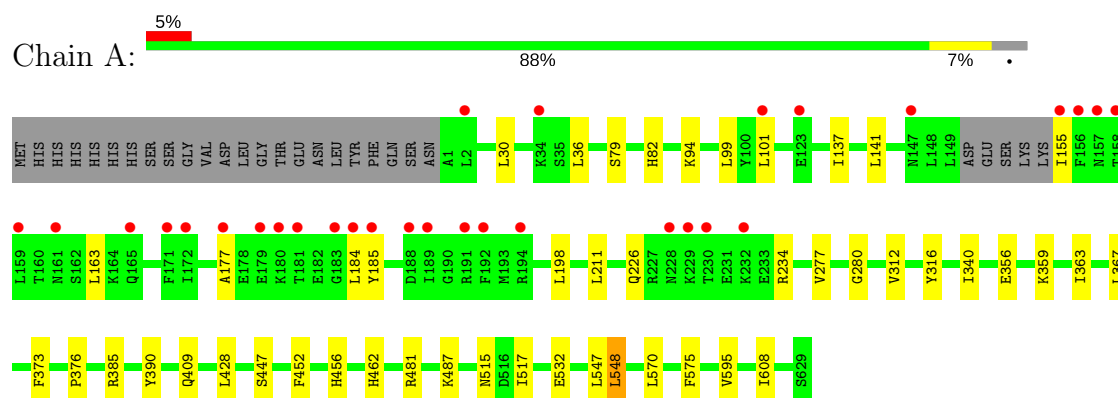
- Molecule 6 is water.

Mol	Chain	Residues	Atoms		ZeroOcc	AltConf
6	A	447	Total	O	0	0
			447	447		

### 3 Residue-property plots [i](#)

These plots are drawn for all protein, RNA and DNA chains in the entry. The first graphic for a chain summarises the proportions of the various outlier classes displayed in the second graphic. The second graphic shows the sequence view annotated by issues in geometry and electron density. Residues are color-coded according to the number of geometric quality criteria for which they contain at least one outlier: green = 0, yellow = 1, orange = 2 and red = 3 or more. A red dot above a residue indicates a poor fit to the electron density ( $RSRZ > 2$ ). Stretches of 2 or more consecutive residues without any outlier are shown as a green connector. Residues present in the sample, but not in the model, are shown in grey.

- Molecule 1: AprA Methyltransferase 1



## 4 Data and refinement statistics

Property	Value	Source
Space group	P 21 21 21	Depositor
Cell constants a, b, c, $\alpha$ , $\beta$ , $\gamma$	60.70Å 88.34Å 136.75Å 90.00° 90.00° 90.00°	Depositor
Resolution (Å)	46.98 – 1.85 46.99 – 1.85	Depositor EDS
% Data completeness (in resolution range)	91.7 (46.98-1.85) 82.7 (46.99-1.85)	Depositor EDS
$R_{merge}$	0.10	Depositor
$R_{sym}$	(Not available)	Depositor
$\langle I/\sigma(I) \rangle$ <sup>1</sup>	0.59 (at 1.84Å)	Xtriage
Refinement program	PHENIX	Depositor
R, $R_{free}$	0.183 , 0.218 0.183 , 0.219	Depositor DCC
$R_{free}$ test set	1939 reflections (3.26%)	wwPDB-VP
Wilson B-factor (Å <sup>2</sup> )	20.8	Xtriage
Anisotropy	0.340	Xtriage
Bulk solvent $k_{sol}$ (e/Å <sup>3</sup> ), $B_{sol}$ (Å <sup>2</sup> )	0.32 , 44.7	EDS
L-test for twinning <sup>2</sup>	$\langle  L  \rangle = 0.48$ , $\langle L^2 \rangle = 0.32$	Xtriage
Estimated twinning fraction	No twinning to report.	Xtriage
$F_o, F_c$ correlation	0.96	EDS
Total number of atoms	5559	wwPDB-VP
Average B, all atoms (Å <sup>2</sup> )	37.0	wwPDB-VP

Xtriage's analysis on translational NCS is as follows: *The largest off-origin peak in the Patterson function is 4.55% of the height of the origin peak. No significant pseudotranslation is detected.*

<sup>1</sup>Intensities estimated from amplitudes.

<sup>2</sup>Theoretical values of  $\langle |L| \rangle$ ,  $\langle L^2 \rangle$  for acentric reflections are 0.5, 0.333 respectively for untwinned datasets, and 0.375, 0.2 for perfectly twinned datasets.

## 5 Model quality [i](#)

### 5.1 Standard geometry [i](#)

Bond lengths and bond angles in the following residue types are not validated in this section: GOL, MLI, SAM, MN

The Z score for a bond length (or angle) is the number of standard deviations the observed value is removed from the expected value. A bond length (or angle) with  $|Z| > 5$  is considered an outlier worth inspection. RMSZ is the root-mean-square of all Z scores of the bond lengths (or angles).

Mol	Chain	Bond lengths		Bond angles	
		RMSZ	$\# Z  > 5$	RMSZ	$\# Z  > 5$
1	A	0.37	0/5178	0.52	1/7011 (0.0%)

There are no bond length outliers.

All (1) bond angle outliers are listed below:

Mol	Chain	Res	Type	Atoms	Z	Observed( $^{\circ}$ )	Ideal( $^{\circ}$ )
1	A	548	LEU	CA-CB-CG	6.64	130.57	115.30

There are no chirality outliers.

There are no planarity outliers.

### 5.2 Too-close contacts [i](#)

In the following table, the Non-H and H(model) columns list the number of non-hydrogen atoms and hydrogen atoms in the chain respectively. The H(added) column lists the number of hydrogen atoms added and optimized by MolProbity. The Clashes column lists the number of clashes within the asymmetric unit, whereas Symm-Clashes lists symmetry related clashes.

Mol	Chain	Non-H	H(model)	H(added)	Clashes	Symm-Clashes
1	A	5071	0	5134	25	0
2	A	27	0	22	2	0
3	A	1	0	0	0	0
4	A	7	0	2	0	0
5	A	6	0	8	0	0
6	A	447	0	0	3	0
All	All	5559	0	5166	26	0

The all-atom clashscore is defined as the number of clashes found per 1000 atoms (including hydrogen atoms). The all-atom clashscore for this structure is 3.



All (26) close contacts within the same asymmetric unit are listed below, sorted by their clash magnitude.

Atom-1	Atom-2	Interatomic distance (Å)	Clash overlap (Å)
1:A:385:ARG:HG2	1:A:390:TYR:HE2	1.67	0.59
1:A:356:GLU:HB2	1:A:359:LYS:HG3	1.87	0.55
1:A:517:ILE:HG21	1:A:532:GLU:HG3	1.91	0.53
1:A:177:ALA:HB1	1:A:184:LEU:HD22	1.93	0.51
1:A:101:LEU:HA	1:A:163:LEU:HD21	1.92	0.50
1:A:280:GLY:HA3	1:A:367:LEU:HD22	1.95	0.49
1:A:155:ILE:HD11	1:A:185:TYR:HA	1.96	0.48
1:A:155:ILE:HD12	1:A:184:LEU:HB3	1.96	0.47
1:A:481:ARG:NH2	6:A:804:HOH:O	2.36	0.46
1:A:94:LYS:HE2	1:A:211:LEU:HD21	1.97	0.45
1:A:340:ILE:HG22	2:A:701:SAM:N6	2.31	0.45
1:A:547:LEU:HD23	1:A:595:VAL:HG22	1.97	0.45
1:A:376:PRO:HB3	1:A:409:GLN:HG3	1.99	0.45
1:A:198:LEU:HB2	6:A:1145:HOH:O	2.17	0.44
1:A:226:GLN:O	1:A:234:ARG:HD3	2.17	0.44
2:A:701:SAM:H4'	2:A:701:SAM:HG1	1.65	0.44
1:A:452:PHE:CZ	1:A:456:HIS:CE1	3.07	0.43
1:A:447:SER:HB3	6:A:815:HOH:O	2.18	0.43
1:A:373:PHE:HB2	1:A:462:HIS:CE1	2.54	0.43
1:A:363:ILE:HG22	1:A:428:LEU:HB3	2.02	0.42
1:A:570:LEU:O	1:A:608:ILE:HA	2.20	0.42
1:A:277:VAL:HG22	1:A:312:VAL:HB	2.03	0.41
1:A:137:ILE:O	1:A:141:LEU:HG	2.21	0.41
1:A:30:LEU:HD23	1:A:36:LEU:HD12	2.03	0.41
1:A:79:SER:O	1:A:82:HIS:HD2	2.04	0.40
1:A:363:ILE:HA	1:A:428:LEU:O	2.22	0.40

There are no symmetry-related clashes.

## 5.3 Torsion angles ⓘ

### 5.3.1 Protein backbone ⓘ

In the following table, the Percentiles column shows the percent Ramachandran outliers of the chain as a percentile score with respect to all X-ray entries followed by that with respect to entries of similar resolution.

The Analysed column shows the number of residues for which the backbone conformation was analysed, and the total number of residues.

Mol	Chain	Analysed	Favoured	Allowed	Outliers	Percentiles	
1	A	624/652 (96%)	612 (98%)	12 (2%)	0	100	100

There are no Ramachandran outliers to report.

### 5.3.2 Protein sidechains ⓘ

In the following table, the Percentiles column shows the percent sidechain outliers of the chain as a percentile score with respect to all X-ray entries followed by that with respect to entries of similar resolution.

The Analysed column shows the number of residues for which the sidechain conformation was analysed, and the total number of residues.

Mol	Chain	Analysed	Rotameric	Outliers	Percentiles	
1	A	561/584 (96%)	555 (99%)	6 (1%)	76	68

All (6) residues with a non-rotameric sidechain are listed below:

Mol	Chain	Res	Type
1	A	99	LEU
1	A	316	TYR
1	A	487	LYS
1	A	515	ASN
1	A	548	LEU
1	A	575	PHE

Some sidechains can be flipped to improve hydrogen bonding and reduce clashes. There are no such sidechains identified.

### 5.3.3 RNA ⓘ

There are no RNA molecules in this entry.

## 5.4 Non-standard residues in protein, DNA, RNA chains ⓘ

There are no non-standard protein/DNA/RNA residues in this entry.

## 5.5 Carbohydrates ⓘ

There are no carbohydrates in this entry.

## 5.6 Ligand geometry

Of 4 ligands modelled in this entry, 1 is monoatomic - leaving 3 for Mogul analysis.

In the following table, the Counts columns list the number of bonds (or angles) for which Mogul statistics could be retrieved, the number of bonds (or angles) that are observed in the model and the number of bonds (or angles) that are defined in the Chemical Component Dictionary. The Link column lists molecule types, if any, to which the group is linked. The Z score for a bond length (or angle) is the number of standard deviations the observed value is removed from the expected value. A bond length (or angle) with  $|Z| > 2$  is considered an outlier worth inspection. RMSZ is the root-mean-square of all Z scores of the bond lengths (or angles).

Mol	Type	Chain	Res	Link	Bond lengths			Bond angles		
					Counts	RMSZ	$\# Z  > 2$	Counts	RMSZ	$\# Z  > 2$
2	SAM	A	701	-	21,29,29	1.19	2 (9%)	16,42,42	2.74	1 (6%)
4	MLI	A	703	3	0,6,6	0.00	-	0,7,7	0.00	-
5	GOL	A	704	-	5,5,5	0.31	0	5,5,5	0.39	0

In the following table, the Chirals column lists the number of chiral outliers, the number of chiral centers analysed, the number of these observed in the model and the number defined in the Chemical Component Dictionary. Similar counts are reported in the Torsion and Rings columns. '-' means no outliers of that kind were identified.

Mol	Type	Chain	Res	Link	Chirals	Torsions	Rings
2	SAM	A	701	-	-	0/8/33/33	0/3/3/3
4	MLI	A	703	3	-	0/0/4/4	0/0/0/0
5	GOL	A	704	-	-	0/4/4/4	0/0/0/0

All (2) bond length outliers are listed below:

Mol	Chain	Res	Type	Atoms	Z	Observed(Å)	Ideal(Å)
2	A	701	SAM	C2-N1	2.44	1.38	1.33
2	A	701	SAM	C2-N3	3.95	1.38	1.32

All (1) bond angle outliers are listed below:

Mol	Chain	Res	Type	Atoms	Z	Observed(°)	Ideal(°)
2	A	701	SAM	N3-C2-N1	-10.64	119.75	128.86

There are no chirality outliers.

There are no torsion outliers.

There are no ring outliers.

1 monomer is involved in 2 short contacts:

Mol	Chain	Res	Type	Clashes	Symm-Clashes
2	A	701	SAM	2	0

## 5.7 Other polymers [i](#)

There are no such residues in this entry.

## 5.8 Polymer linkage issues [i](#)

There are no chain breaks in this entry.

## 6 Fit of model and data

### 6.1 Protein, DNA and RNA chains

In the following table, the column labelled ‘#RSRZ> 2’ contains the number (and percentage) of RSRZ outliers, followed by percent RSRZ outliers for the chain as percentile scores relative to all X-ray entries and entries of similar resolution. The OWAB column contains the minimum, median, 95<sup>th</sup> percentile and maximum values of the occupancy-weighted average B-factor per residue. The column labelled ‘Q< 0.9’ lists the number of (and percentage) of residues with an average occupancy less than 0.9.

Mol	Chain	Analysed	<RSRZ>	#RSRZ>2	OWAB(Å <sup>2</sup> )	Q<0.9
1	A	624/652 (95%)	-0.07	30 (4%) 30 29	16, 29, 79, 142	0

All (30) RSRZ outliers are listed below:

Mol	Chain	Res	Type	RSRZ
1	A	185	TYR	10.4
1	A	181	THR	8.4
1	A	180	LYS	7.9
1	A	155	ILE	5.5
1	A	192	PHE	4.7
1	A	2	LEU	4.5
1	A	230	THR	4.0
1	A	157	ASN	4.0
1	A	156	PHE	4.0
1	A	183	GLY	3.9
1	A	184	LEU	3.7
1	A	159	LEU	3.4
1	A	165	GLN	3.3
1	A	191	ARG	3.1
1	A	228	ASN	3.1
1	A	101	LEU	3.0
1	A	147	ASN	2.9
1	A	172	ILE	2.9
1	A	179	GLU	2.8
1	A	188	ASP	2.5
1	A	232	LYS	2.5
1	A	189	ILE	2.5
1	A	177	ALA	2.3
1	A	161	ASN	2.2
1	A	158	THR	2.1
1	A	34	LYS	2.1
1	A	123	GLU	2.1

*Continued on next page...*

*Continued from previous page...*

Mol	Chain	Res	Type	RSRZ
1	A	171	PHE	2.0
1	A	229	LYS	2.0
1	A	194	ARG	2.0

## 6.2 Non-standard residues in protein, DNA, RNA chains [i](#)

There are no non-standard protein/DNA/RNA residues in this entry.

## 6.3 Carbohydrates [i](#)

There are no carbohydrates in this entry.

## 6.4 Ligands [i](#)

In the following table, the Atoms column lists the number of modelled atoms in the group and the number defined in the chemical component dictionary. The B-factors column lists the minimum, median, 95<sup>th</sup> percentile and maximum values of B factors of atoms in the group. The column labelled 'Q< 0.9' lists the number of atoms with occupancy less than 0.9.

Mol	Type	Chain	Res	Atoms	RSCC	RSR	B-factors( $\text{\AA}^2$ )	Q<0.9
5	GOL	A	704	6/6	0.84	0.21	36,54,57,58	0
2	SAM	A	701	27/27	0.93	0.10	25,31,58,71	0
4	MLI	A	703	7/7	0.94	0.10	29,33,42,44	0
3	MN	A	702	1/1	0.99	0.06	23,23,23,23	0

## 6.5 Other polymers [i](#)

There are no such residues in this entry.