



Full wwPDB X-ray Structure Validation Report ⓘ

Mar 26, 2018 – 01:09 PM EDT

PDB ID : 1B4W
Title : BASIC PHOSPHOLIPASE A2 FROM AGKISTRODON HALYS PALLAS-
IMPLICATIONS FOR ITS ASSOCIATION AND ANTICOAGULANT AC-
TIVITIES BY X-RAY CRYSTALLOGRAPHY
Authors : Zhao, K.H.; Lin, Z.J.
Deposited on : 1998-12-30
Resolution : 2.60 Å(reported)

This is a Full wwPDB X-ray Structure Validation Report for a publicly released PDB entry.

We welcome your comments at validation@mail.wwpdb.org

A user guide is available at

<https://www.wwpdb.org/validation/2017/XrayValidationReportHelp>

with specific help available everywhere you see the ⓘ symbol.

The following versions of software and data (see [references ⓘ](#)) were used in the production of this report:

MolProbity : 4.02b-467
Mogul : 1.7.3 (157068), CSD as539be (2018)
Xtriage (Phenix) : 1.13
EDS : rb-20031021
Percentile statistics : 20171227.v01 (using entries in the PDB archive December 27th 2017)
Refmac : 5.8.0158
CCP4 : 7.0 (Gargrove)
Ideal geometry (proteins) : Engh & Huber (2001)
Ideal geometry (DNA, RNA) : Parkinson et al. (1996)
Validation Pipeline (wwPDB-VP) : rb-20031021

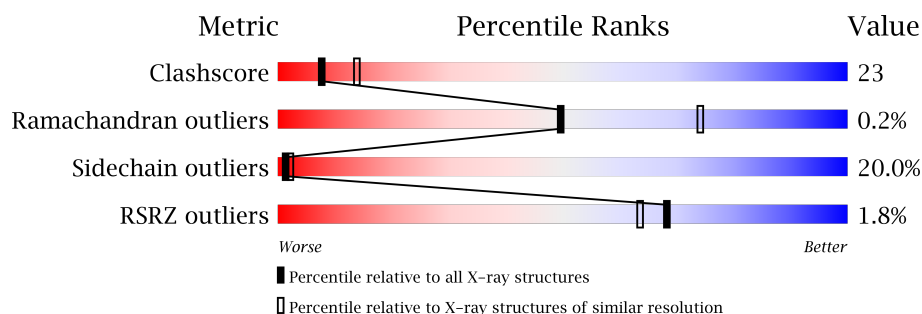
1 Overall quality at a glance

The following experimental techniques were used to determine the structure:

X-RAY DIFFRACTION

The reported resolution of this entry is 2.60 Å.

Percentile scores (ranging between 0-100) for global validation metrics of the entry are shown in the following graphic. The table shows the number of entries on which the scores are based.



Metric	Whole archive (#Entries)	Similar resolution (#Entries, resolution range(Å))
Clashscore	122126	3110 (2.60-2.60)
Ramachandran outliers	120053	3062 (2.60-2.60)
Sidechain outliers	120020	3062 (2.60-2.60)
RSRZ outliers	108989	2706 (2.60-2.60)

The table below summarises the geometric issues observed across the polymeric chains and their fit to the electron density. The red, orange, yellow and green segments on the lower bar indicate the fraction of residues that contain outliers for ≥ 3 , 2, 1 and 0 types of geometric quality criteria. A grey segment represents the fraction of residues that are not modelled. The numeric value for each fraction is indicated below the corresponding segment, with a dot representing fractions $\leq 5\%$. The upper red bar (where present) indicates the fraction of residues that have poor fit to the electron density. The numeric value is given above the bar.

Mol	Chain	Length	Quality of chain
1	A	122	
1	B	122	
1	C	122	
1	D	122	

2 Entry composition

There are 3 unique types of molecules in this entry. The entry contains 4004 atoms, of which 0 are hydrogens and 0 are deuteriums.

In the tables below, the ZeroOcc column contains the number of atoms modelled with zero occupancy, the AltConf column contains the number of residues with at least one atom in alternate conformation and the Trace column contains the number of residues modelled with at most 2 atoms.

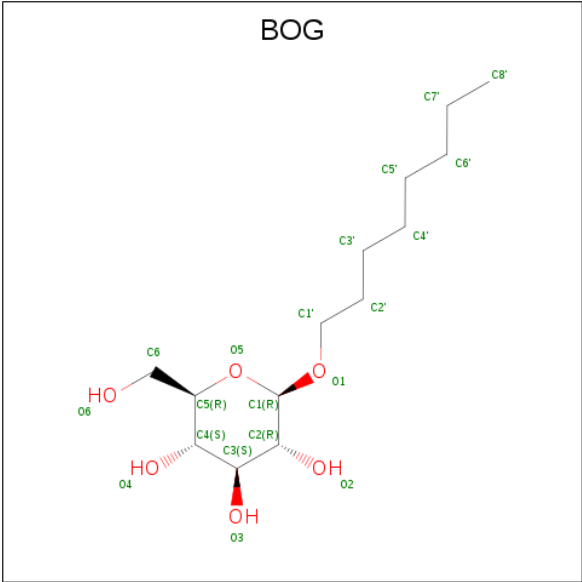
- Molecule 1 is a protein called PROTEIN (PHOSPHOLIPASE A2).

Mol	Chain	Residues	Atoms					ZeroOcc	AltConf	Trace
1	A	122	Total	C	N	O	S	0	0	0
			964	605	163	179	17			
1	B	122	Total	C	N	O	S	0	0	0
			964	605	163	179	17			
1	C	122	Total	C	N	O	S	0	0	0
			964	605	163	179	17			
1	D	122	Total	C	N	O	S	0	0	0
			964	605	163	179	17			

There are 16 discrepancies between the modelled and reference sequences:

Chain	Residue	Modelled	Actual	Comment	Reference
A	1	HIS	SER	ENGINEERED	UNP O42187
A	55	VAL	LEU	ENGINEERED	UNP O42187
A	119	ALA	THR	ENGINEERED	UNP O42187
A	122	ASP	ASN	SEE REMARK 999	UNP O42187
B	1	HIS	SER	ENGINEERED	UNP O42187
B	55	VAL	LEU	ENGINEERED	UNP O42187
B	119	ALA	THR	ENGINEERED	UNP O42187
B	122	ASP	ASN	SEE REMARK 999	UNP O42187
C	1	HIS	SER	ENGINEERED	UNP O42187
C	55	VAL	LEU	ENGINEERED	UNP O42187
C	119	ALA	THR	ENGINEERED	UNP O42187
C	122	ASP	ASN	SEE REMARK 999	UNP O42187
D	1	HIS	SER	ENGINEERED	UNP O42187
D	55	VAL	LEU	ENGINEERED	UNP O42187
D	119	ALA	THR	ENGINEERED	UNP O42187
D	122	ASP	ASN	SEE REMARK 999	UNP O42187

- Molecule 2 is B-OCTYLGLUCOSIDE (three-letter code: BOG) (formula: C₁₄H₂₈O₆).



Mol	Chain	Residues	Atoms			ZeroOcc	AltConf
2	A	1	Total	C	O	0	0
			20	14	6		
2	D	1	Total	C	O	0	0
			20	14	6		

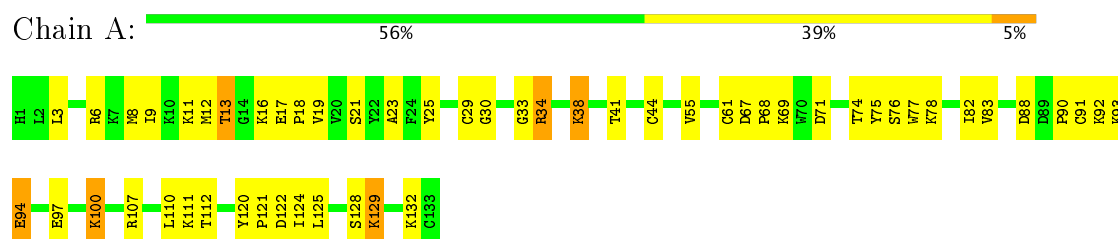
- Molecule 3 is water.

Mol	Chain	Residues	Atoms		ZeroOcc	AltConf
3	A	30	Total	O	0	0
			30	30		
3	B	20	Total	O	0	0
			20	20		
3	C	29	Total	O	0	0
			29	29		
3	D	29	Total	O	0	0
			29	29		

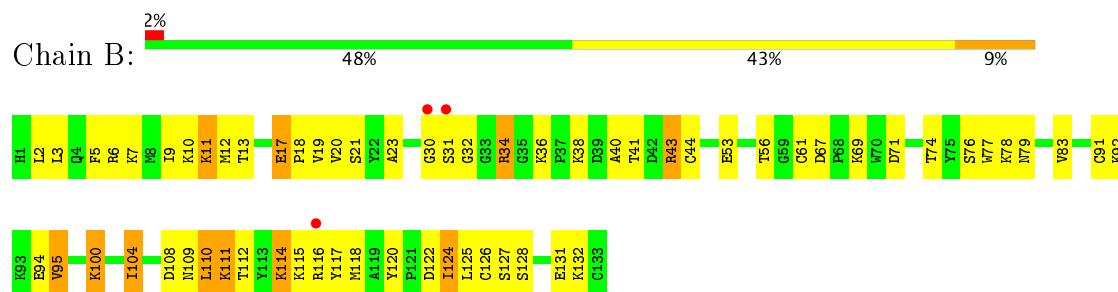
3 Residue-property plots [i](#)

These plots are drawn for all protein, RNA and DNA chains in the entry. The first graphic for a chain summarises the proportions of the various outlier classes displayed in the second graphic. The second graphic shows the sequence view annotated by issues in geometry and electron density. Residues are color-coded according to the number of geometric quality criteria for which they contain at least one outlier: green = 0, yellow = 1, orange = 2 and red = 3 or more. A red dot above a residue indicates a poor fit to the electron density ($RSRZ > 2$). Stretches of 2 or more consecutive residues without any outlier are shown as a green connector. Residues present in the sample, but not in the model, are shown in grey.

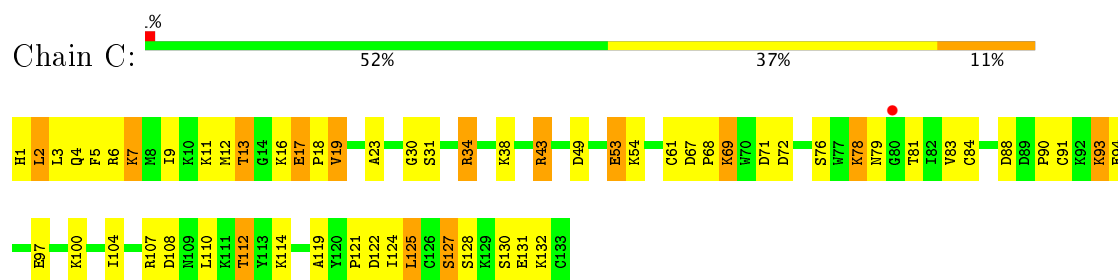
• Molecule 1: PROTEIN (PHOSPHOLIPASE A2)



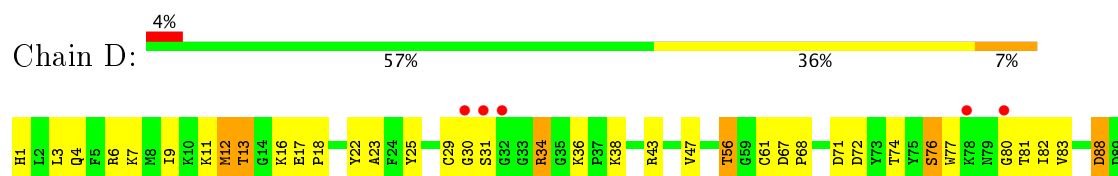
• Molecule 1: PROTEIN (PHOSPHOLIPASE A2)



• Molecule 1: PROTEIN (PHOSPHOLIPASE A2)



• Molecule 1: PROTEIN (PHOSPHOLIPASE A2)



P90	C91	E94	Y95	K100	R107	L110	K111	K115	R116	A119	Y120	P121	D122	I124	S128	K129	G133
-----	-----	-----	-----	------	------	------	------	------	------	------	------	------	------	------	------	------	------

4 Data and refinement statistics

Property	Value	Source
Space group	C 1 2 1	Depositor
Cell constants a, b, c, α , β , γ	100.45Å 54.29Å 108.39Å 90.00° 111.76° 90.00°	Depositor
Resolution (Å)	8.00 – 2.60 9.95 – 2.60	Depositor EDS
% Data completeness (in resolution range)	95.9 (8.00-2.60) 97.4 (9.95-2.60)	Depositor EDS
R_{merge}	0.10	Depositor
R_{sym}	0.09	Depositor
$\langle I/\sigma(I) \rangle$ ¹	2.33 (at 2.60Å)	Xtriage
Refinement program	X-PLOR 3.8	Depositor
R, R_{free}	0.205 , 0.286 0.206 , (Not available)	Depositor DCC
R_{free} test set	No test flags present.	wwPDB-VP
Wilson B-factor (Å ²)	35.6	Xtriage
Anisotropy	0.198	Xtriage
Bulk solvent k_{sol} (e/Å ³), B_{sol} (Å ²)	0.36 , 95.3	EDS
L-test for twinning ²	$\langle L \rangle = 0.50$, $\langle L^2 \rangle = 0.33$	Xtriage
Estimated twinning fraction	No twinning to report.	Xtriage
F_o, F_c correlation	0.93	EDS
Total number of atoms	4004	wwPDB-VP
Average B, all atoms (Å ²)	27.0	wwPDB-VP

Xtriage's analysis on translational NCS is as follows: *The largest off-origin peak in the Patterson function is 6.70% of the height of the origin peak. No significant pseudotranslation is detected.*

¹Intensities estimated from amplitudes.

²Theoretical values of $\langle |L| \rangle$, $\langle L^2 \rangle$ for acentric reflections are 0.5, 0.333 respectively for untwinned datasets, and 0.375, 0.2 for perfectly twinned datasets.

5 Model quality [i](#)

5.1 Standard geometry [i](#)

Bond lengths and bond angles in the following residue types are not validated in this section: BOG

The Z score for a bond length (or angle) is the number of standard deviations the observed value is removed from the expected value. A bond length (or angle) with $|Z| > 5$ is considered an outlier worth inspection. RMSZ is the root-mean-square of all Z scores of the bond lengths (or angles).

Mol	Chain	Bond lengths		Bond angles	
		RMSZ	$\# Z > 5$	RMSZ	$\# Z > 5$
1	A	0.40	0/987	0.59	0/1321
1	B	0.38	0/987	0.56	0/1321
1	C	0.39	0/987	0.58	0/1321
1	D	0.40	0/987	0.59	0/1321
All	All	0.39	0/3948	0.58	0/5284

There are no bond length outliers.

There are no bond angle outliers.

There are no chirality outliers.

There are no planarity outliers.

5.2 Too-close contacts [i](#)

In the following table, the Non-H and H(model) columns list the number of non-hydrogen atoms and hydrogen atoms in the chain respectively. The H(added) column lists the number of hydrogen atoms added and optimized by MolProbity. The Clashes column lists the number of clashes within the asymmetric unit, whereas Symm-Clashes lists symmetry related clashes.

Mol	Chain	Non-H	H(model)	H(added)	Clashes	Symm-Clashes
1	A	964	0	925	37	0
1	B	964	0	925	53	0
1	C	964	0	925	55	0
1	D	964	0	925	49	0
2	A	20	0	28	4	0
2	D	20	0	28	1	0
3	A	30	0	0	0	0
3	B	20	0	0	1	0
3	C	29	0	0	0	0

Continued on next page...

Continued from previous page...

Mol	Chain	Non-H	H(model)	H(added)	Clashes	Symm-Clashes
3	D	29	0	0	0	0
All	All	4004	0	3756	178	0

The all-atom clashscore is defined as the number of clashes found per 1000 atoms (including hydrogen atoms). The all-atom clashscore for this structure is 23.

All (178) close contacts within the same asymmetric unit are listed below, sorted by their clash magnitude.

Atom-1	Atom-2	Interatomic distance (Å)	Clash overlap (Å)
1:C:4:GLN:HA	1:C:7:LYS:HD2	1.42	1.00
1:D:124:ILE:H	1:D:124:ILE:HD13	1.27	0.95
1:C:124:ILE:HG23	1:C:125:LEU:HD13	1.47	0.92
1:A:19:VAL:HG21	1:C:19:VAL:HG21	1.53	0.90
1:C:13:THR:HG22	1:C:16:LYS:H	1.37	0.89
1:B:32:GLY:HA2	1:C:34:ARG:NH1	1.88	0.88
1:B:114:LYS:HG3	1:B:116:ARG:HH21	1.40	0.86
1:A:13:THR:HG22	1:A:16:LYS:H	1.38	0.86
1:C:121:PRO:HB2	1:C:125:LEU:HD22	1.58	0.86
1:C:61:CYS:HB2	1:C:71:ASP:OD2	1.79	0.81
1:C:119:ALA:HB3	1:D:121:PRO:HB3	1.59	0.81
1:D:12:MET:HE1	1:D:107:ARG:HD3	1.63	0.79
2:A:200:BOG:H61	1:D:124:ILE:HD11	1.65	0.78
1:C:121:PRO:CD	1:D:119:ALA:HB1	2.14	0.77
2:A:200:BOG:H4	1:D:124:ILE:HD12	1.68	0.76
1:A:9:ILE:O	1:A:13:THR:HB	1.86	0.74
1:A:55:VAL:HG22	1:A:94:GLU:HG2	1.70	0.73
1:D:124:ILE:N	1:D:124:ILE:HD13	2.02	0.72
1:B:109:ASN:HA	1:B:111:LYS:HE2	1.71	0.72
1:C:112:THR:O	1:C:114:LYS:HE2	1.91	0.71
1:D:13:THR:CG2	1:D:16:LYS:H	2.04	0.70
1:B:78:LYS:HB3	1:B:83:VAL:HG21	1.72	0.70
1:B:34:ARG:CZ	1:B:34:ARG:HB3	2.19	0.70
1:B:34:ARG:HD2	1:B:126:CYS:HB2	1.74	0.69
1:B:111:LYS:NZ	1:B:111:LYS:HB2	2.07	0.69
1:A:67:ASP:O	1:A:71:ASP:HB2	1.93	0.68
1:B:114:LYS:HG3	1:B:116:ARG:NH2	2.09	0.68
1:D:67:ASP:O	1:D:71:ASP:HB2	1.94	0.68
1:C:9:ILE:O	1:C:13:THR:HB	1.94	0.67
1:A:93:LYS:O	1:A:97:GLU:HG2	1.95	0.67
1:B:100:LYS:O	1:B:104:ILE:HG13	1.96	0.66
1:D:13:THR:HG23	1:D:16:LYS:H	1.60	0.66

Continued on next page...

Continued from previous page...

Atom-1	Atom-2	Interatomic distance (Å)	Clash overlap (Å)
1:B:2:LEU:HD11	1:B:69:LYS:HG2	1.76	0.66
1:C:121:PRO:HD3	1:D:119:ALA:HB1	1.78	0.65
1:B:67:ASP:O	1:B:71:ASP:HB2	1.97	0.64
1:C:6:ARG:HH12	1:C:17:GLU:CD	2.00	0.64
1:C:121:PRO:HD2	1:D:119:ALA:HB1	1.79	0.64
1:C:34:ARG:HB2	1:C:34:ARG:CZ	2.27	0.64
1:B:111:LYS:HZ2	1:B:111:LYS:HB2	1.61	0.63
1:A:55:VAL:O	1:D:129:LYS:HE2	2.00	0.62
1:D:1:HIS:HD2	1:D:3:LEU:H	1.48	0.61
1:C:119:ALA:CB	1:D:121:PRO:HB3	2.31	0.61
1:B:114:LYS:HG3	1:B:116:ARG:HE	1.65	0.61
2:A:200:BOG:H4	1:D:124:ILE:CD1	2.32	0.60
1:C:84:CYS:SG	1:C:97:GLU:OE1	2.60	0.60
1:D:12:MET:HG2	1:D:77:TRP:HH2	1.67	0.60
1:C:12:MET:O	1:C:107:ARG:HG3	2.02	0.59
1:A:13:THR:HG22	1:A:16:LYS:N	2.15	0.59
1:A:61:CYS:HB2	1:A:71:ASP:OD2	2.03	0.59
1:B:115:LYS:O	1:B:118:MET:HG2	2.02	0.59
1:C:43:ARG:NH2	1:C:131:GLU:OE1	2.36	0.59
1:C:6:ARG:NH1	1:C:17:GLU:OE2	2.33	0.59
1:B:9:ILE:O	1:B:13:THR:HB	2.04	0.58
1:B:32:GLY:HA2	1:C:34:ARG:HH11	1.69	0.57
2:A:200:BOG:H61	1:D:124:ILE:CD1	2.33	0.57
1:B:108:ASP:O	1:B:111:LYS:HE2	2.04	0.57
1:A:129:LYS:NZ	1:D:56:THR:HA	2.18	0.57
1:C:34:ARG:HD3	1:C:127:SER:O	2.05	0.57
1:C:93:LYS:O	1:C:97:GLU:HG2	2.05	0.56
1:D:34:ARG:HD2	1:D:122:ASP:HB3	1.86	0.56
1:C:61:CYS:N	1:C:91:CYS:SG	2.79	0.56
1:C:107:ARG:HH21	1:C:108:ASP:CG	2.09	0.55
1:C:13:THR:HG23	1:C:16:LYS:HG3	1.88	0.55
1:C:2:LEU:HD21	1:C:69:LYS:HG2	1.88	0.55
1:B:38:LYS:HE2	1:B:120:TYR:CZ	2.42	0.55
1:C:6:ARG:NH1	1:C:18:PRO:HD2	2.22	0.55
1:A:11:LYS:HG2	1:A:77:TRP:CZ3	2.42	0.55
1:B:53:GLU:OE2	1:C:34:ARG:NH2	2.39	0.55
1:B:61:CYS:N	1:B:91:CYS:SG	2.80	0.54
1:A:19:VAL:HG21	1:C:19:VAL:CG2	2.33	0.54
1:A:61:CYS:N	1:A:91:CYS:SG	2.81	0.53
1:C:67:ASP:O	1:C:71:ASP:HB2	2.08	0.53
1:C:78:LYS:O	1:C:81:THR:HG22	2.09	0.53

Continued on next page...

Continued from previous page...

Atom-1	Atom-2	Interatomic distance (Å)	Clash overlap (Å)
1:D:76:SER:O	1:D:83:VAL:HG12	2.07	0.53
1:D:61:CYS:HB2	1:D:71:ASP:OD2	2.08	0.53
1:C:1:HIS:ND1	1:C:2:LEU:N	2.57	0.53
1:C:121:PRO:HD2	1:D:119:ALA:CB	2.39	0.53
1:D:124:ILE:H	1:D:124:ILE:CD1	1.96	0.52
1:C:121:PRO:CD	1:D:119:ALA:CB	2.88	0.52
1:B:5:PHE:CE1	1:B:9:ILE:HD11	2.44	0.52
1:A:55:VAL:HG22	1:A:94:GLU:CG	2.38	0.52
1:B:111:LYS:HE3	1:B:111:LYS:N	2.25	0.52
1:A:6:ARG:NH1	1:A:17:GLU:OE2	2.44	0.51
1:A:8:MET:SD	1:A:82:ILE:HD13	2.49	0.51
1:C:5:PHE:CZ	1:C:9:ILE:HD11	2.46	0.51
1:D:61:CYS:N	1:D:91:CYS:SG	2.84	0.51
1:B:125:LEU:N	1:B:125:LEU:HD23	2.26	0.50
1:B:38:LYS:HG3	1:B:117:TYR:CE1	2.45	0.50
1:B:43:ARG:NH2	1:B:131:GLU:OE1	2.44	0.50
1:A:75:TYR:HD2	1:A:82:ILE:HG23	1.77	0.50
1:D:16:LYS:O	1:D:18:PRO:HD3	2.12	0.50
1:C:4:GLN:HA	1:C:7:LYS:HZ2	1.77	0.50
1:B:111:LYS:H	1:B:111:LYS:HE3	1.76	0.49
1:C:43:ARG:HH21	1:C:131:GLU:CD	2.16	0.49
1:A:12:MET:O	1:A:107:ARG:HG3	2.12	0.49
1:D:12:MET:CE	1:D:107:ARG:HD3	2.37	0.49
1:A:33:GLY:HA2	1:A:34:ARG:NH2	2.27	0.49
1:B:114:LYS:HG3	1:B:116:ARG:NE	2.28	0.48
1:D:29:CYS:O	2:D:300:BOG:H1	2.12	0.48
1:C:3:LEU:O	1:C:7:LYS:HG3	2.12	0.48
1:A:78:LYS:HB2	1:A:83:VAL:HG21	1.95	0.48
1:D:13:THR:HG23	1:D:16:LYS:N	2.28	0.48
1:A:82:ILE:O	1:A:100:LYS:HE2	2.13	0.48
1:B:91:CYS:O	1:B:95:VAL:HG12	2.13	0.48
1:B:34:ARG:NH2	1:B:122:ASP:OD2	2.47	0.48
1:D:13:THR:HG22	1:D:16:LYS:H	1.78	0.48
1:B:38:LYS:HB3	1:B:117:TYR:CE1	2.49	0.48
1:C:76:SER:O	1:C:83:VAL:HG22	2.13	0.48
1:D:1:HIS:HB3	1:D:4:GLN:HG3	1.96	0.47
1:A:6:ARG:HG3	1:A:18:PRO:HB2	1.95	0.47
1:A:91:CYS:O	1:A:94:GLU:HB3	2.15	0.47
1:D:1:HIS:HB2	1:D:72:ASP:OD1	2.14	0.47
1:D:77:TRP:CH2	1:D:82:ILE:HD11	2.49	0.47
1:B:6:ARG:NH1	1:B:17:GLU:OE2	2.48	0.47

Continued on next page...

Continued from previous page...

Atom-1	Atom-2	Interatomic distance (Å)	Clash overlap (Å)
1:A:23:ALA:O	1:A:30:GLY:HA2	2.15	0.46
3:B:153:HOH:O	1:C:53:GLU:HG2	2.16	0.46
1:B:40:ALA:HB1	1:B:109:ASN:ND2	2.31	0.46
1:C:90:PRO:O	1:C:94:GLU:HB2	2.15	0.46
1:A:120:TYR:HA	1:A:121:PRO:HD3	1.82	0.46
1:B:5:PHE:CZ	1:B:9:ILE:HD11	2.51	0.46
1:B:3:LEU:O	1:B:7:LYS:HG3	2.16	0.46
1:B:23:ALA:O	1:B:30:GLY:HA2	2.16	0.45
1:A:75:TYR:CD2	1:A:82:ILE:HG23	2.51	0.45
1:A:121:PRO:HG2	1:A:125:LEU:HD11	1.98	0.45
1:B:40:ALA:HB1	1:B:109:ASN:CG	2.36	0.45
1:D:43:ARG:O	1:D:47:VAL:HG23	2.17	0.45
1:B:41:THR:O	1:B:44:CYS:HB2	2.17	0.45
1:D:88:ASP:O	1:D:90:PRO:HD3	2.17	0.45
1:C:2:LEU:CD2	1:C:69:LYS:HG2	2.46	0.45
1:D:90:PRO:O	1:D:94:GLU:HB2	2.17	0.45
1:C:13:THR:HG22	1:C:16:LYS:N	2.17	0.45
1:B:109:ASN:HA	1:B:111:LYS:CE	2.44	0.44
1:B:6:ARG:HG3	1:B:18:PRO:HG2	1.99	0.44
1:A:25:TYR:O	1:A:29:CYS:HB2	2.18	0.44
1:B:11:LYS:HB3	1:B:77:TRP:CH2	2.52	0.44
1:C:23:ALA:O	1:C:30:GLY:HA2	2.17	0.44
1:D:82:ILE:HB	1:D:100:LYS:HG3	1.99	0.44
1:B:78:LYS:HB3	1:B:83:VAL:CG2	2.44	0.44
1:C:114:LYS:HB2	1:C:114:LYS:HE3	1.78	0.44
1:D:6:ARG:HH21	1:D:17:GLU:CD	2.21	0.44
1:A:88:ASP:O	1:A:90:PRO:HD3	2.18	0.43
1:A:125:LEU:CD2	1:B:20:VAL:HG22	2.47	0.43
1:B:12:MET:CE	1:B:104:ILE:HG12	2.48	0.43
1:B:34:ARG:CB	1:B:34:ARG:CZ	2.91	0.43
1:B:91:CYS:O	1:B:94:GLU:HB3	2.18	0.43
1:A:67:ASP:HA	1:A:68:PRO:HD2	1.93	0.43
1:A:129:LYS:HZ1	1:D:56:THR:HA	1.81	0.42
1:B:3:LEU:HD23	1:B:3:LEU:HA	1.84	0.42
1:B:111:LYS:NZ	1:B:112:THR:HG23	2.33	0.42
1:D:25:TYR:O	1:D:29:CYS:HB2	2.18	0.42
1:B:34:ARG:CG	1:B:34:ARG:HH11	2.33	0.42
1:C:122:ASP:N	1:C:122:ASP:OD1	2.51	0.42
1:B:38:LYS:HA	1:B:38:LYS:HD2	1.70	0.42
1:C:67:ASP:HA	1:C:68:PRO:HD2	1.95	0.42
1:C:4:GLN:HG3	1:C:7:LYS:HZ2	1.84	0.42

Continued on next page...

Continued from previous page...

Atom-1	Atom-2	Interatomic distance (Å)	Clash overlap (Å)
1:D:23:ALA:O	1:D:30:GLY:HA2	2.20	0.42
1:D:6:ARG:HG3	1:D:18:PRO:HG2	2.00	0.42
1:D:76:SER:OG	1:D:83:VAL:HG13	2.19	0.42
1:C:100:LYS:O	1:C:104:ILE:HD12	2.19	0.41
1:B:124:ILE:H	1:B:124:ILE:HG12	1.44	0.41
1:C:4:GLN:CA	1:C:7:LYS:HZ2	2.34	0.41
1:D:38:LYS:HE3	1:D:38:LYS:HB3	1.93	0.41
1:D:91:CYS:O	1:D:95:VAL:HG13	2.21	0.41
1:A:111:LYS:HG2	1:A:111:LYS:O	2.20	0.41
1:A:121:PRO:HG2	1:A:125:LEU:CD1	2.49	0.41
1:C:16:LYS:O	1:C:18:PRO:HD3	2.19	0.41
1:A:38:LYS:HA	1:A:38:LYS:HD2	1.59	0.41
1:C:110:LEU:HA	1:C:110:LEU:HD12	1.80	0.41
1:B:92:LYS:O	1:B:95:VAL:HG13	2.21	0.41
1:C:6:ARG:CG	1:C:6:ARG:HH11	2.33	0.40
1:B:110:LEU:HD12	1:B:110:LEU:HA	1.90	0.40
1:B:114:LYS:HG3	1:B:116:ARG:CZ	2.51	0.40
1:C:78:LYS:HE2	1:C:79:ASN:HB2	2.03	0.40
1:D:67:ASP:HA	1:D:68:PRO:HD2	1.86	0.40
1:D:9:ILE:O	1:D:13:THR:HB	2.20	0.40
1:A:82:ILE:HB	1:A:100:LYS:HG3	2.03	0.40
1:D:22:TYR:O	1:D:29:CYS:HB3	2.21	0.40
1:A:41:THR:O	1:A:44:CYS:HB2	2.21	0.40

There are no symmetry-related clashes.

5.3 Torsion angles [i](#)

5.3.1 Protein backbone [i](#)

In the following table, the Percentiles column shows the percent Ramachandran outliers of the chain as a percentile score with respect to all X-ray entries followed by that with respect to entries of similar resolution.

The Analysed column shows the number of residues for which the backbone conformation was analysed, and the total number of residues.

Mol	Chain	Analysed	Favoured	Allowed	Outliers	Percentiles	
1	A	120/122 (98%)	115 (96%)	5 (4%)	0	100	100
1	B	120/122 (98%)	114 (95%)	6 (5%)	0	100	100

Continued on next page...

Continued from previous page...

Mol	Chain	Analysed	Favoured	Allowed	Outliers	Percentiles	
1	C	120/122 (98%)	114 (95%)	6 (5%)	0	100	100
1	D	120/122 (98%)	114 (95%)	5 (4%)	1 (1%)	21	42
All	All	480/488 (98%)	457 (95%)	22 (5%)	1 (0%)	49	74

All (1) Ramachandran outliers are listed below:

Mol	Chain	Res	Type
1	D	80	GLY

5.3.2 Protein sidechains ⓘ

In the following table, the Percentiles column shows the percent sidechain outliers of the chain as a percentile score with respect to all X-ray entries followed by that with respect to entries of similar resolution.

The Analysed column shows the number of residues for which the sidechain conformation was analysed, and the total number of residues.

Mol	Chain	Analysed	Rotameric	Outliers	Percentiles	
1	A	106/106 (100%)	88 (83%)	18 (17%)	2	3
1	B	106/106 (100%)	83 (78%)	23 (22%)	1	2
1	C	106/106 (100%)	82 (77%)	24 (23%)	1	1
1	D	106/106 (100%)	86 (81%)	20 (19%)	1	2
All	All	424/424 (100%)	339 (80%)	85 (20%)	1	2

All (85) residues with a non-rotameric sidechain are listed below:

Mol	Chain	Res	Type
1	A	3	LEU
1	A	13	THR
1	A	21	SER
1	A	34	ARG
1	A	38	LYS
1	A	69	LYS
1	A	74	THR
1	A	76	SER
1	A	92	LYS
1	A	94	GLU
1	A	100	LYS

Continued on next page...

Continued from previous page...

Mol	Chain	Res	Type
1	A	110	LEU
1	A	112	THR
1	A	122	ASP
1	A	124	ILE
1	A	128	SER
1	A	129	LYS
1	A	132	LYS
1	B	10	LYS
1	B	11	LYS
1	B	17	GLU
1	B	19	VAL
1	B	21	SER
1	B	31	SER
1	B	34	ARG
1	B	36	LYS
1	B	43	ARG
1	B	56	THR
1	B	74	THR
1	B	76	SER
1	B	79	ASN
1	B	95	VAL
1	B	100	LYS
1	B	104	ILE
1	B	110	LEU
1	B	111	LYS
1	B	114	LYS
1	B	124	ILE
1	B	127	SER
1	B	128	SER
1	B	132	LYS
1	C	2	LEU
1	C	7	LYS
1	C	11	LYS
1	C	13	THR
1	C	17	GLU
1	C	19	VAL
1	C	31	SER
1	C	34	ARG
1	C	38	LYS
1	C	43	ARG
1	C	49	ASP
1	C	53	GLU

Continued on next page...

Continued from previous page...

Mol	Chain	Res	Type
1	C	54	LYS
1	C	69	LYS
1	C	72	ASP
1	C	78	LYS
1	C	88	ASP
1	C	93	LYS
1	C	112	THR
1	C	125	LEU
1	C	127	SER
1	C	128	SER
1	C	130	SER
1	C	132	LYS
1	D	7	LYS
1	D	11	LYS
1	D	12	MET
1	D	13	THR
1	D	31	SER
1	D	34	ARG
1	D	36	LYS
1	D	56	THR
1	D	74	THR
1	D	76	SER
1	D	81	THR
1	D	88	ASP
1	D	95	VAL
1	D	110	LEU
1	D	111	LYS
1	D	115	LYS
1	D	116	ARG
1	D	124	ILE
1	D	128	SER
1	D	129	LYS

Some sidechains can be flipped to improve hydrogen bonding and reduce clashes. All (4) such sidechains are listed below:

Mol	Chain	Res	Type
1	A	79	ASN
1	B	79	ASN
1	D	1	HIS
1	D	79	ASN

5.3.3 RNA ⓘ

There are no RNA molecules in this entry.

5.4 Non-standard residues in protein, DNA, RNA chains ⓘ

There are no non-standard protein/DNA/RNA residues in this entry.

5.5 Carbohydrates ⓘ

There are no carbohydrates in this entry.

5.6 Ligand geometry ⓘ

2 ligands are modelled in this entry.

In the following table, the Counts columns list the number of bonds (or angles) for which Mogul statistics could be retrieved, the number of bonds (or angles) that are observed in the model and the number of bonds (or angles) that are defined in the Chemical Component Dictionary. The Link column lists molecule types, if any, to which the group is linked. The Z score for a bond length (or angle) is the number of standard deviations the observed value is removed from the expected value. A bond length (or angle) with $|Z| > 2$ is considered an outlier worth inspection. RMSZ is the root-mean-square of all Z scores of the bond lengths (or angles).

Mol	Type	Chain	Res	Link	Bond lengths			Bond angles		
					Counts	RMSZ	$\# Z > 2$	Counts	RMSZ	$\# Z > 2$
2	BOG	A	200	-	20,20,20	0.46	0	25,25,25	0.59	0
2	BOG	D	300	-	20,20,20	0.52	0	25,25,25	1.13	2 (8%)

In the following table, the Chirals column lists the number of chiral outliers, the number of chiral centers analysed, the number of these observed in the model and the number defined in the Chemical Component Dictionary. Similar counts are reported in the Torsion and Rings columns. '-' means no outliers of that kind were identified.

Mol	Type	Chain	Res	Link	Chirals	Torsions	Rings
2	BOG	A	200	-	-	0/11/31/31	0/1/1/1
2	BOG	D	300	-	-	0/11/31/31	0/1/1/1

There are no bond length outliers.

All (2) bond angle outliers are listed below:

Mol	Chain	Res	Type	Atoms	Z	Observed($^{\circ}$)	Ideal($^{\circ}$)
2	D	300	BOG	C4-C3-C2	2.80	115.73	110.83
2	D	300	BOG	C1-C2-C3	2.95	116.15	109.98

There are no chirality outliers.

There are no torsion outliers.

There are no ring outliers.

2 monomers are involved in 5 short contacts:

Mol	Chain	Res	Type	Clashes	Symm-Clashes
2	A	200	BOG	4	0
2	D	300	BOG	1	0

5.7 Other polymers [i](#)

There are no such residues in this entry.

5.8 Polymer linkage issues [i](#)

There are no chain breaks in this entry.

6 Fit of model and data ⓘ

6.1 Protein, DNA and RNA chains ⓘ

In the following table, the column labelled ‘#RSRZ> 2’ contains the number (and percentage) of RSRZ outliers, followed by percent RSRZ outliers for the chain as percentile scores relative to all X-ray entries and entries of similar resolution. The OWAB column contains the minimum, median, 95th percentile and maximum values of the occupancy-weighted average B-factor per residue. The column labelled ‘Q< 0.9’ lists the number of (and percentage) of residues with an average occupancy less than 0.9.

Mol	Chain	Analysed	<RSRZ>	#RSRZ>2	OWAB(Å ²)	Q<0.9
1	A	122/122 (100%)	-0.56	0 100 100	4, 21, 42, 70	0
1	B	122/122 (100%)	-0.17	3 (2%) 57 50	14, 33, 58, 68	0
1	C	122/122 (100%)	-0.26	1 (0%) 86 84	7, 26, 48, 63	0
1	D	122/122 (100%)	-0.42	5 (4%) 37 29	5, 22, 46, 79	0
All	All	488/488 (100%)	-0.35	9 (1%) 68 63	4, 25, 54, 79	0

All (9) RSRZ outliers are listed below:

Mol	Chain	Res	Type	RSRZ
1	B	31	SER	3.4
1	D	31	SER	2.9
1	D	80	GLY	2.5
1	B	116	ARG	2.2
1	D	78	LYS	2.2
1	C	80	GLY	2.2
1	D	30	GLY	2.1
1	D	32	GLY	2.1
1	B	30	GLY	2.0

6.2 Non-standard residues in protein, DNA, RNA chains ⓘ

There are no non-standard protein/DNA/RNA residues in this entry.

6.3 Carbohydrates ⓘ

There are no carbohydrates in this entry.

6.4 Ligands [i](#)

In the following table, the Atoms column lists the number of modelled atoms in the group and the number defined in the chemical component dictionary. The B-factors column lists the minimum, median, 95th percentile and maximum values of B factors of atoms in the group. The column labelled 'Q< 0.9' lists the number of atoms with occupancy less than 0.9.

Mol	Type	Chain	Res	Atoms	RSCC	RSR	B-factors(\AA^2)	Q<0.9
2	BOG	D	300	20/20	0.71	0.25	24,39,45,45	0
2	BOG	A	200	20/20	0.90	0.15	19,27,39,40	0

6.5 Other polymers [i](#)

There are no such residues in this entry.