



Full wwPDB X-ray Structure Validation Report ⓘ

Mar 8, 2018 – 10:05 pm GMT

PDB ID : 2B7D
Title : Factor VIIa Inhibitors: Chemical Optimization, Preclinical Pharmacokinetics, Pharmacodynamics, and Efficacy in a Baboon Thrombosis Model
Authors : Young, W.B.; Mordenti, J.; Torkelson, S.; Shrader, W.D.; Kolesnikov, A.; Rai, R.; Liu, L.; Hu, H.; Leahy, E.M.; Green, M.J.; Sprengeler, P.A.; Katz, B.A.; Yu, C.; Janc, J.W.; Elrod, K.C.; Marzec, U.M.; Hanson, S.R.
Deposited on : 2005-10-04
Resolution : 2.24 Å(reported)

This is a Full wwPDB X-ray Structure Validation Report for a publicly released PDB entry.

We welcome your comments at validation@mail.wwpdb.org

A user guide is available at

<https://www.wwpdb.org/validation/2017/XrayValidationReportHelp>

with specific help available everywhere you see the ⓘ symbol.

The following versions of software and data (see [references ⓘ](#)) were used in the production of this report:

MolProbity	:	4.02b-467
Mogul	:	1.7.3 (157068), CSD as539be (2018)
Xtriage (Phenix)	:	1.13
EDS	:	trunk30967
Percentile statistics	:	20171227.v01 (using entries in the PDB archive December 27th 2017)
Refmac	:	5.8.0158
CCP4	:	7.0 (Gargrove)
Ideal geometry (proteins)	:	Engh & Huber (2001)
Ideal geometry (DNA, RNA)	:	Parkinson et al. (1996)
Validation Pipeline (wwPDB-VP)	:	trunk30967

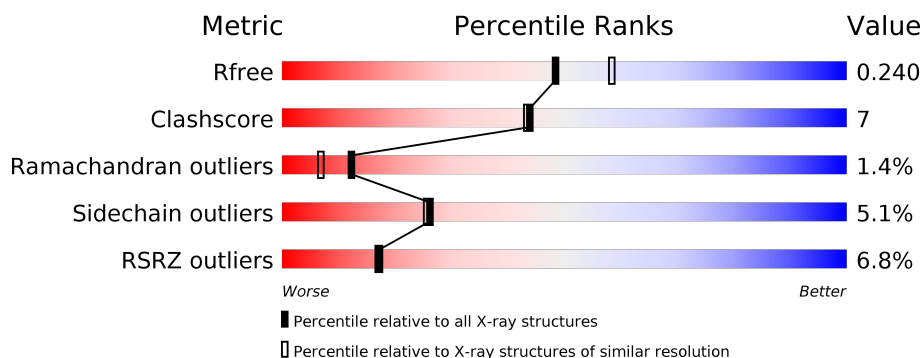
1 Overall quality at a glance

The following experimental techniques were used to determine the structure:

X-RAY DIFFRACTION

The reported resolution of this entry is 2.24 Å.

Percentile scores (ranging between 0-100) for global validation metrics of the entry are shown in the following graphic. The table shows the number of entries on which the scores are based.



Metric	Whole archive (#Entries)	Similar resolution (#Entries, resolution range(Å))
R_{free}	111664	2027 (2.26-2.22)
Clashscore	122126	2170 (2.26-2.22)
Ramachandran outliers	120053	2129 (2.26-2.22)
Sidechain outliers	120020	2130 (2.26-2.22)
RSRZ outliers	108989	1991 (2.26-2.22)

The table below summarises the geometric issues observed across the polymeric chains and their fit to the electron density. The red, orange, yellow and green segments on the lower bar indicate the fraction of residues that contain outliers for ≥ 3 , 2, 1 and 0 types of geometric quality criteria. A grey segment represents the fraction of residues that are not modelled. The numeric value for each fraction is indicated below the corresponding segment, with a dot representing fractions $\leq 5\%$. The upper red bar (where present) indicates the fraction of residues that have poor fit to the electron density. The numeric value is given above the bar.

Mol	Chain	Length	Quality of chain
1	L	152	<div> <div>6%</div> <div>47%</div> <div>14%</div> <div>•</div> <div>38%</div> </div>
2	H	254	<div> <div>5%</div> <div>75%</div> <div>20%</div> <div>5%</div> </div>
3	T	218	<div> <div>6%</div> <div>53%</div> <div>12%</div> <div>•</div> <div>32%</div> </div>

2 Entry composition

There are 5 unique types of molecules in this entry. The entry contains 4233 atoms, of which 0 are hydrogens and 0 are deuteriums.

In the tables below, the ZeroOcc column contains the number of atoms modelled with zero occupancy, the AltConf column contains the number of residues with at least one atom in alternate conformation and the Trace column contains the number of residues modelled with at most 2 atoms.

- Molecule 1 is a protein called Coagulation factor VII.

Mol	Chain	Residues	Atoms					ZeroOcc	AltConf	Trace
1	L	94	Total	C	N	O	S	0	0	0
			706	425	123	145	13			

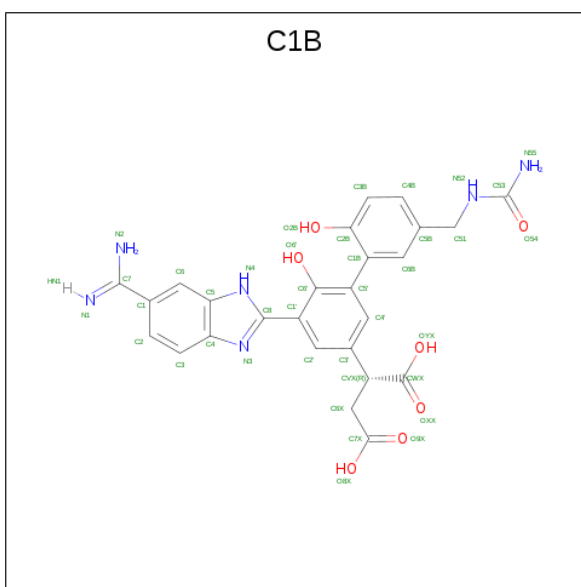
- Molecule 2 is a protein called Coagulation factor VII.

Mol	Chain	Residues	Atoms					ZeroOcc	AltConf	Trace
2	H	254	Total	C	N	O	S	0	3	0
			1988	1262	353	360	13			

- Molecule 3 is a protein called Tissue factor.

Mol	Chain	Residues	Atoms					ZeroOcc	AltConf	Trace
3	T	149	Total	C	N	O	S	0	0	0
			1194	756	196	240	2			

- Molecule 4 is (2R)-2-[5-(5-CARBAMIMIDOYL-1H-BENZOIMIDAZOL-2-YL)-6,2'-DIHYDROXY-5'-UREIDOMETHYL-BIPHENYL-3-YL]-SUCCINIC ACID (three-letter code: C1B) (formula: C₂₆H₂₄N₆O₇).



Mol	Chain	Residues	Atoms				ZeroOcc	AltConf
4	H	1	Total	C	N	O	0	0
			39	26	6	7		

- Molecule 5 is water.

Mol	Chain	Residues	Atoms	ZeroOcc	AltConf
5	L	68	Total O 68 68	0	0
5	H	159	Total O 159 159	0	3
5	T	79	Total O 79 79	0	1

4 Data and refinement statistics

Property	Value	Source
Space group	P 1 21 1	Depositor
Cell constants a, b, c, α , β , γ	78.70Å 69.03Å 78.19Å 90.00° 89.49° 90.00°	Depositor
Resolution (Å)	7.00 – 2.24 7.00 – 2.24	Depositor EDS
% Data completeness (in resolution range)	(Not available) (7.00-2.24) 99.3 (7.00-2.24)	Depositor EDS
R_{merge}	0.11	Depositor
R_{sym}	(Not available)	Depositor
$\langle I/\sigma(I) \rangle$ ¹	4.44 (at 2.24Å)	Xtriage
Refinement program	X-PLOR 3.851	Depositor
R, R_{free}	0.247 , 0.289 0.240 , 0.240	Depositor DCC
R_{free} test set	3892 reflections (10.02%)	wwPDB-VP
Wilson B-factor (Å ²)	24.6	Xtriage
Anisotropy	0.994	Xtriage
Bulk solvent k_{sol} (e/Å ³), B_{sol} (Å ²)	0.25 , 79.3	EDS
L-test for twinning ²	$\langle L \rangle = 0.49$, $\langle L^2 \rangle = 0.32$	Xtriage
Estimated twinning fraction	0.000 for l,k,-h 0.024 for -h,-k,l 0.018 for -l,-k,-h	Xtriage
F_o, F_c correlation	0.92	EDS
Total number of atoms	4233	wwPDB-VP
Average B, all atoms (Å ²)	33.0	wwPDB-VP

Xtriage's analysis on translational NCS is as follows: *The largest off-origin peak in the Patterson function is 7.00% of the height of the origin peak. No significant pseudotranslation is detected.*

¹Intensities estimated from amplitudes.

²Theoretical values of $\langle |L| \rangle$, $\langle L^2 \rangle$ for acentric reflections are 0.5, 0.333 respectively for untwinned datasets, and 0.375, 0.2 for perfectly twinned datasets.

5 Model quality [i](#)

5.1 Standard geometry [i](#)

Bond lengths and bond angles in the following residue types are not validated in this section: C1B

The Z score for a bond length (or angle) is the number of standard deviations the observed value is removed from the expected value. A bond length (or angle) with $|Z| > 5$ is considered an outlier worth inspection. RMSZ is the root-mean-square of all Z scores of the bond lengths (or angles).

Mol	Chain	Bond lengths		Bond angles	
		RMSZ	$\# Z > 5$	RMSZ	$\# Z > 5$
1	L	1.39	0/719	1.41	5/971 (0.5%)
2	H	1.42	1/2046 (0.0%)	1.70	51/2785 (1.8%)
3	T	1.28	0/1218	1.58	20/1657 (1.2%)
All	All	1.38	1/3983 (0.0%)	1.61	76/5413 (1.4%)

All (1) bond length outliers are listed below:

Mol	Chain	Res	Type	Atoms	Z	Observed(Å)	Ideal(Å)
2	H	215	TRP	CG-CD2	-5.25	1.34	1.43

All (76) bond angle outliers are listed below:

Mol	Chain	Res	Type	Atoms	Z	Observed(°)	Ideal(°)
2	H	61	TRP	CD1-NE1-CE2	10.17	118.15	109.00
3	T	45	TRP	CD1-NE1-CE2	10.16	118.14	109.00
2	H	29	TRP	CD1-NE1-CE2	10.03	118.03	109.00
2	H	237	TRP	CD1-NE1-CE2	9.75	117.78	109.00
3	T	25	TRP	CD1-NE1-CE2	9.58	117.62	109.00
2	H	51	TRP	CD1-NE1-CE2	9.27	117.34	109.00
2	H	207	TRP	NE1-CE2-CZ2	9.14	140.46	130.40
2	H	207	TRP	CD1-NE1-CE2	8.89	117.00	109.00
2	H	215	TRP	CD1-NE1-CE2	8.84	116.96	109.00
3	T	14	TRP	CD1-NE1-CE2	8.81	116.93	109.00
2	H	141	TRP	CD1-NE1-CE2	8.45	116.60	109.00
3	T	25	TRP	CG-CD1-NE1	-8.21	101.89	110.10
2	H	29	TRP	CG-CD1-NE1	-8.17	101.93	110.10
2	H	237	TRP	NE1-CE2-CZ2	8.14	139.36	130.40
3	T	74	ARG	NE-CZ-NH2	-8.14	116.23	120.30
2	H	61	TRP	CG-CD1-NE1	-8.04	102.06	110.10
2	H	237	TRP	CG-CD1-NE1	-7.77	102.33	110.10

Continued on next page...

Continued from previous page...

Mol	Chain	Res	Type	Atoms	Z	Observed(°)	Ideal(°)
2	H	61	TRP	NE1-CE2-CZ2	7.76	138.93	130.40
2	H	199	HIS	N-CA-C	-7.75	90.06	111.00
2	H	215	TRP	NE1-CE2-CZ2	7.66	138.82	130.40
2	H	253	ARG	NE-CZ-NH2	-7.63	116.48	120.30
2	H	134	ARG	NE-CZ-NH2	-7.62	116.49	120.30
3	T	45	TRP	NE1-CE2-CZ2	7.44	138.58	130.40
2	H	141	TRP	NE1-CE2-CZ2	7.43	138.57	130.40
2	H	207	TRP	CG-CD1-NE1	-7.36	102.74	110.10
3	T	14	TRP	NE1-CE2-CZ2	7.34	138.47	130.40
2	H	129(G)	VAL	N-CA-C	-7.27	91.38	111.00
3	T	45	TRP	CG-CD1-NE1	-7.26	102.84	110.10
3	T	14	TRP	CG-CD1-NE1	-7.13	102.97	110.10
2	H	230	ARG	NE-CZ-NH2	-7.10	116.75	120.30
2	H	184	TYR	CB-CG-CD2	-7.02	116.79	121.00
1	L	118	TYR	CB-CG-CD2	-6.93	116.84	121.00
3	T	25	TRP	NE1-CE2-CZ2	6.78	137.86	130.40
2	H	51	TRP	CG-CD1-NE1	-6.75	103.35	110.10
2	H	215	TRP	CG-CD1-NE1	-6.74	103.36	110.10
2	H	147	ARG	NE-CZ-NH2	-6.73	116.94	120.30
2	H	170(F)	GLY	N-CA-C	-6.60	96.59	113.10
2	H	141	TRP	CG-CD1-NE1	-6.46	103.64	110.10
1	L	113	ARG	NE-CZ-NH2	-6.44	117.08	120.30
2	H	207	TRP	NE1-CE2-CD2	-6.36	100.94	107.30
2	H	237	TRP	NE1-CE2-CD2	-6.34	100.96	107.30
2	H	207	TRP	CG-CD2-CE3	-6.32	128.21	133.90
2	H	29	TRP	NE1-CE2-CZ2	6.29	137.31	130.40
1	L	123	ASP	CB-CG-OD2	-6.27	112.65	118.30
2	H	61	TRP	NE1-CE2-CD2	-6.25	101.05	107.30
2	H	115	THR	OG1-CB-CG2	-6.22	95.69	110.00
3	T	45	TRP	NE1-CE2-CD2	-6.22	101.08	107.30
2	H	215	TRP	NE1-CE2-CD2	-6.19	101.11	107.30
2	H	162	ARG	NE-CZ-NH2	-6.01	117.30	120.30
2	H	170(E)	VAL	CA-C-N	-5.93	104.34	116.20
2	H	129(B)	ARG	NE-CZ-NH2	-5.87	117.37	120.30
3	T	135	ARG	NE-CZ-NH1	-5.84	117.38	120.30
1	L	118	TYR	CB-CG-CD1	5.83	124.50	121.00
3	T	40	THR	N-CA-C	-5.83	95.27	111.00
3	T	20	LYS	N-CA-C	-5.83	95.27	111.00
3	T	25	TRP	NE1-CE2-CD2	-5.73	101.57	107.30
2	H	170(E)	VAL	C-N-CA	5.69	134.25	122.30
2	H	62	ARG	NE-CZ-NH2	-5.68	117.46	120.30
3	T	196	ARG	NE-CZ-NH2	-5.67	117.47	120.30

Continued on next page...

Continued from previous page...

Mol	Chain	Res	Type	Atoms	Z	Observed(°)	Ideal(°)
2	H	141	TRP	NE1-CE2-CD2	-5.66	101.64	107.30
2	H	51	TRP	NE1-CE2-CD2	-5.66	101.64	107.30
2	H	29	TRP	NE1-CE2-CD2	-5.65	101.65	107.30
2	H	247	ARG	NE-CZ-NH2	-5.59	117.50	120.30
2	H	51	TRP	NE1-CE2-CZ2	5.58	136.54	130.40
2	H	214	SER	N-CA-CB	-5.57	102.15	110.50
2	H	184	TYR	CB-CG-CD1	5.41	124.24	121.00
1	L	104	ASP	CB-CG-OD2	-5.39	113.45	118.30
3	T	193	ILE	N-CA-C	-5.32	96.62	111.00
3	T	14	TRP	NE1-CE2-CD2	-5.32	101.98	107.30
3	T	28	LYS	N-CA-C	-5.30	96.70	111.00
2	H	217	GLN	N-CA-C	-5.29	96.72	111.00
3	T	136	ARG	NE-CZ-NH2	-5.29	117.66	120.30
2	H	164	MET	N-CA-C	-5.25	96.83	111.00
2	H	134	ARG	CA-CB-CG	-5.12	102.14	113.40
2	H	129(B)	ARG	N-CA-CB	-5.05	101.50	110.60
2	H	35	VAL	N-CA-C	-5.01	97.48	111.00

There are no chirality outliers.

There are no planarity outliers.

5.2 Too-close contacts

In the following table, the Non-H and H(model) columns list the number of non-hydrogen atoms and hydrogen atoms in the chain respectively. The H(added) column lists the number of hydrogen atoms added and optimized by MolProbity. The Clashes column lists the number of clashes within the asymmetric unit, whereas Symm-Clashes lists symmetry related clashes.

Mol	Chain	Non-H	H(model)	H(added)	Clashes	Symm-Clashes
1	L	706	0	640	12	0
2	H	1988	0	1963	24	0
3	T	1194	0	1163	20	0
4	H	39	0	21	2	0
5	H	159	0	0	4	0
5	L	68	0	0	0	0
5	T	79	0	0	0	0
All	All	4233	0	3787	55	0

The all-atom clashscore is defined as the number of clashes found per 1000 atoms (including hydrogen atoms). The all-atom clashscore for this structure is 7.

All (55) close contacts within the same asymmetric unit are listed below, sorted by their clash

magnitude.

Atom-1	Atom-2	Interatomic distance (Å)	Clash overlap (Å)
1:L:61:CYS:SG	1:L:68:TYR:HB2	2.34	0.67
1:L:71:PHE:CE2	3:T:131:ARG:HD3	2.32	0.65
4:H:258:C1B:O6'	5:H:391:HOH:O	2.00	0.60
2:H:136:SER:HB2	2:H:199:HIS:CE1	2.37	0.59
2:H:195:SER:CB	5:H:391:HOH:O	2.52	0.57
2:H:195:SER:HB2	5:H:391:HOH:O	2.04	0.57
2:H:136:SER:CB	2:H:199:HIS:CE1	2.89	0.56
2:H:99:THR:HB	2:H:215:TRP:CD1	2.41	0.55
2:H:92:SER:OG	2:H:255:PRO:HA	2.07	0.55
2:H:143:GLN:NE2	2:H:146:ASP:O	2.40	0.54
3:T:150:ASP:O	3:T:193:ILE:HA	2.09	0.53
1:L:71:PHE:CD2	3:T:131:ARG:HD3	2.45	0.52
1:L:105:HIS:HB2	1:L:108:THR:HG23	1.90	0.52
1:L:62:LYS:O	1:L:68:TYR:HA	2.11	0.51
2:H:236:GLU:CD	2:H:236:GLU:H	2.16	0.48
3:T:79:PRO:HD2	3:T:85:SER:CB	2.45	0.47
3:T:45:TRP:CE2	3:T:74:ARG:NH2	2.83	0.47
3:T:51:TYR:CD1	3:T:83:VAL:CG2	2.96	0.47
2:H:27:CYS:N	2:H:28:PRO:CD	2.77	0.47
3:T:6:THR:HG22	3:T:77:SER:HB3	1.96	0.47
3:T:79:PRO:HD2	3:T:85:SER:HB3	1.95	0.47
3:T:51:TYR:CD1	3:T:83:VAL:HG22	2.50	0.47
2:H:164:MET:CE	3:T:91:GLU:HB3	2.46	0.46
3:T:194:PRO:HA	3:T:200:ARG:NH1	2.31	0.46
2:H:61:TRP:HB3	2:H:250:VAL:HG11	1.98	0.46
3:T:135:ARG:HA	3:T:139:THR:O	2.16	0.46
2:H:127:THR:O	2:H:129(B):ARG:HB3	2.17	0.45
1:L:105:HIS:CB	1:L:108:THR:HG23	2.46	0.45
3:T:6:THR:HG22	3:T:77:SER:CB	2.47	0.45
3:T:82:ASN:C	3:T:84:GLU:H	2.20	0.45
1:L:102:CYS:SG	1:L:110:ARG:HD3	2.57	0.45
2:H:187:GLY:HA2	2:H:221(A):ALA:O	2.17	0.44
3:T:136:ARG:O	3:T:137:ASN:C	2.55	0.44
1:L:49:GLN:N	1:L:52:SER:HG	2.16	0.44
4:H:258:C1B:O2B	5:H:385:HOH:O	2.21	0.43
2:H:228:TYR:N	2:H:228:TYR:CD1	2.86	0.43
3:T:16:SER:HA	3:T:20:LYS:O	2.19	0.43
2:H:203:TYR:OH	2:H:204:ARG:NE	2.52	0.42
1:L:61:CYS:SG	1:L:68:TYR:CB	3.07	0.42
1:L:68:TYR:N	1:L:68:TYR:CD1	2.88	0.42
2:H:135:PHE:HB3	2:H:159:ASN:ND2	2.35	0.42

Continued on next page...

Continued from previous page...

Atom-1	Atom-2	Interatomic distance (Å)	Clash overlap (Å)
3:T:12:LEU:HD12	3:T:12:LEU:N	2.35	0.42
3:T:72:LEU:HD13	3:T:73:ALA:N	2.35	0.42
2:H:32:LEU:HB2	2:H:141:TRP:CZ3	2.55	0.41
2:H:107:ARG:NH1	2:H:246:PRO:HG3	2.35	0.41
1:L:138:ILE:O	1:L:142:GLU:HG2	2.19	0.41
3:T:51:TYR:CE1	3:T:83:VAL:HG22	2.55	0.41
2:H:202:HIS:HB2	2:H:207:TRP:CH2	2.56	0.41
2:H:159:ASN:HD22	2:H:159:ASN:HA	1.70	0.41
2:H:45:THR:O	2:H:52:VAL:HA	2.21	0.41
2:H:89:ILE:HA	2:H:252:LEU:O	2.20	0.41
2:H:94:TYR:CE2	2:H:96:PRO:HA	2.55	0.41
2:H:28:PRO:HG2	2:H:29:TRP:CE3	2.56	0.40
1:L:112:CYS:HB2	1:L:124:GLY:O	2.21	0.40
3:T:63:ILE:C	3:T:63:ILE:HD12	2.41	0.40

There are no symmetry-related clashes.

5.3 Torsion angles [i](#)

5.3.1 Protein backbone [i](#)

In the following table, the Percentiles column shows the percent Ramachandran outliers of the chain as a percentile score with respect to all X-ray entries followed by that with respect to entries of similar resolution.

The Analysed column shows the number of residues for which the backbone conformation was analysed, and the total number of residues.

Mol	Chain	Analysed	Favoured	Allowed	Outliers	Percentiles	
1	L	92/152 (60%)	82 (89%)	8 (9%)	2 (2%)	7	2
2	H	255/254 (100%)	231 (91%)	21 (8%)	3 (1%)	14	9
3	T	143/218 (66%)	123 (86%)	18 (13%)	2 (1%)	12	7
All	All	490/624 (78%)	436 (89%)	47 (10%)	7 (1%)	12	7

All (7) Ramachandran outliers are listed below:

Mol	Chain	Res	Type
1	L	66	GLN
1	L	86	ASP
2	H	49	THR

Continued on next page...

Continued from previous page...

Mol	Chain	Res	Type
2	H	61	TRP
2	H	170(D)	LYS
3	T	137	ASN
3	T	148	GLY

5.3.2 Protein sidechains ⓘ

In the following table, the Percentiles column shows the percent sidechain outliers of the chain as a percentile score with respect to all X-ray entries followed by that with respect to entries of similar resolution.

The Analysed column shows the number of residues for which the sidechain conformation was analysed, and the total number of residues.

Mol	Chain	Analysed	Rotameric	Outliers	Percentiles	
1	L	82/132 (62%)	77 (94%)	5 (6%)	20	18
2	H	219/216 (101%)	204 (93%)	15 (7%)	17	14
3	T	137/199 (69%)	134 (98%)	3 (2%)	55	62
All	All	438/547 (80%)	415 (95%)	23 (5%)	26	24

All (23) residues with a non-rotameric sidechain are listed below:

Mol	Chain	Res	Type
1	L	49	GLN
1	L	65	LEU
1	L	83	THR
1	L	92	VAL
1	L	110	ARG
2	H	49	THR
2	H	63	ASN
2	H	68	LEU
2	H	84	ARG
2	H	92	SER
2	H	100	ASN
2	H	106	LEU
2	H	139	SER
2	H	159	ASN
2	H	170[A]	GLN
2	H	170[B]	GLN
2	H	170(C)	ARG
2	H	236	GLU

Continued on next page...

Continued from previous page...

Mol	Chain	Res	Type
2	H	247	ARG
2	H	255	PRO
3	T	83	VAL
3	T	88	SER
3	T	195	SER

Some sidechains can be flipped to improve hydrogen bonding and reduce clashes. All (5) such sidechains are listed below:

Mol	Chain	Res	Type
1	L	88	GLN
2	H	100	ASN
2	H	110	GLN
2	H	143	GLN
2	H	159	ASN

5.3.3 RNA [i](#)

There are no RNA molecules in this entry.

5.4 Non-standard residues in protein, DNA, RNA chains [i](#)

There are no non-standard protein/DNA/RNA residues in this entry.

5.5 Carbohydrates [i](#)

There are no carbohydrates in this entry.

5.6 Ligand geometry [i](#)

1 ligand is modelled in this entry.

In the following table, the Counts columns list the number of bonds (or angles) for which Mogul statistics could be retrieved, the number of bonds (or angles) that are observed in the model and the number of bonds (or angles) that are defined in the Chemical Component Dictionary. The Link column lists molecule types, if any, to which the group is linked. The Z score for a bond length (or angle) is the number of standard deviations the observed value is removed from the expected value. A bond length (or angle) with $|Z| > 2$ is considered an outlier worth inspection. RMSZ is the root-mean-square of all Z scores of the bond lengths (or angles).

Mol	Type	Chain	Res	Link	Bond lengths			Bond angles		
					Counts	RMSZ	# Z > 2	Counts	RMSZ	# Z > 2
4	C1B	H	258	-	36,42,42	2.08	12 (33%)	46,61,61	1.64	6 (13%)

In the following table, the Chirals column lists the number of chiral outliers, the number of chiral centers analysed, the number of these observed in the model and the number defined in the Chemical Component Dictionary. Similar counts are reported in the Torsion and Rings columns. '-' means no outliers of that kind were identified.

Mol	Type	Chain	Res	Link	Chirals	Torsions	Rings
4	C1B	H	258	-	-	0/23/29/29	0/4/4/4

All (12) bond length outliers are listed below:

Mol	Chain	Res	Type	Atoms	Z	Observed(Å)	Ideal(Å)
4	H	258	C1B	C1B-C5'	-5.55	1.40	1.49
4	H	258	C1B	C8-N3	-4.59	1.30	1.35
4	H	258	C1B	C1-C7	-4.55	1.39	1.47
4	H	258	C1B	C1'-C8	-3.20	1.40	1.48
4	H	258	C1B	C3-C4	-3.11	1.36	1.41
4	H	258	C1B	C4-N3	-2.86	1.29	1.39
4	H	258	C1B	C5-C4	-2.65	1.33	1.42
4	H	258	C1B	C6-C5	-2.39	1.38	1.41
4	H	258	C1B	C8-N4	-2.28	1.33	1.35
4	H	258	C1B	C53-N52	-2.19	1.32	1.34
4	H	258	C1B	C2-C1	2.14	1.43	1.39
4	H	258	C1B	C6-C1	2.47	1.41	1.37

All (6) bond angle outliers are listed below:

Mol	Chain	Res	Type	Atoms	Z	Observed(°)	Ideal(°)
4	H	258	C1B	O54-C53-N55	-4.24	115.80	123.09
4	H	258	C1B	C2-C3-C4	-3.41	116.30	120.84
4	H	258	C1B	CWX-CVX-C3'	-3.06	107.18	111.62
4	H	258	C1B	C5B-C51-N52	-2.71	107.11	113.01
4	H	258	C1B	C6X-CVX-CWX	3.49	117.41	111.74
4	H	258	C1B	N55-C53-N52	5.50	122.69	116.85

There are no chirality outliers.

There are no torsion outliers.

There are no ring outliers.

1 monomer is involved in 2 short contacts:

Mol	Chain	Res	Type	Clashes	Symm-Clashes
4	H	258	C1B	2	0

5.7 Other polymers [i](#)

There are no such residues in this entry.

5.8 Polymer linkage issues [i](#)

There are no chain breaks in this entry.

6 Fit of model and data

6.1 Protein, DNA and RNA chains

In the following table, the column labelled ‘#RSRZ > 2’ contains the number (and percentage) of RSRZ outliers, followed by percent RSRZ outliers for the chain as percentile scores relative to all X-ray entries and entries of similar resolution. The OWAB column contains the minimum, median, 95th percentile and maximum values of the occupancy-weighted average B-factor per residue. The column labelled ‘Q < 0.9’ lists the number of (and percentage) of residues with an average occupancy less than 0.9.

Mol	Chain	Analysed	<RSRZ>	#RSRZ>2	OWAB(Å ²)	Q<0.9
1	L	94/152 (61%)	0.10	9 (9%) 8 7	8, 30, 73, 80	14 (14%)
2	H	254/254 (100%)	-0.23	12 (4%) 31 32	2, 22, 73, 93	17 (6%)
3	T	149/218 (68%)	0.29	13 (8%) 10 10	7, 35, 73, 86	23 (15%)
All	All	497/624 (79%)	-0.01	34 (6%) 17 17	2, 27, 73, 93	54 (10%)

All (34) RSRZ outliers are listed below:

Mol	Chain	Res	Type	RSRZ
1	L	66	GLN	10.8
2	H	170(G)	ASP	9.6
3	T	137	ASN	9.5
3	T	138	ASN	7.6
2	H	170(F)	GLY	6.8
2	H	170(H)	SER	6.4
3	T	188	SER	5.9
2	H	248	PRO	5.2
3	T	87	GLY	5.0
2	H	170(E)	VAL	5.0
2	H	78	GLY	4.8
3	T	88	SER	4.7
3	T	205	SER	4.5
2	H	247	ARG	4.1
3	T	129	ASP	4.1
2	H	60(C)	LYS	4.0
3	T	155	LEU	3.8
3	T	195	SER	3.8
3	T	81	GLY	3.5
3	T	154	THR	3.3
1	L	50	CYS	3.2
3	T	109	GLY	3.1
1	L	52	SER	3.0

Continued on next page...

Continued from previous page...

Mol	Chain	Res	Type	RSRZ
2	H	245	GLU	2.9
1	L	67	SER	2.7
1	L	49	GLN	2.7
2	H	63	ASN	2.5
1	L	61	CYS	2.4
2	H	170(D)	LYS	2.3
3	T	136	ARG	2.1
1	L	65	LEU	2.1
1	L	53	SER	2.1
2	H	60(A)	LYS	2.1
1	L	63	ASP	2.0

6.2 Non-standard residues in protein, DNA, RNA chains [i](#)

There are no non-standard protein/DNA/RNA residues in this entry.

6.3 Carbohydrates [i](#)

There are no carbohydrates in this entry.

6.4 Ligands [i](#)

In the following table, the Atoms column lists the number of modelled atoms in the group and the number defined in the chemical component dictionary. The B-factors column lists the minimum, median, 95th percentile and maximum values of B factors of atoms in the group. The column labelled 'Q<0.9' lists the number of atoms with occupancy less than 0.9.

Mol	Type	Chain	Res	Atoms	RSCC	RSR	B-factors(\AA^2)	Q<0.9
4	C1B	H	258	39/39	0.94	0.11	5,19,48,53	7

6.5 Other polymers [i](#)

There are no such residues in this entry.