



# Full wwPDB X-ray Structure Validation Report ⓘ

Oct 5, 2019 – 11:06 PM EDT

PDB ID : 2C04  
Title : GMPPCP complex of SRP GTPase Ffh NG Domain at ultra-high resolution  
Authors : Ramirez, U.D.; Preininger, A.M.; Freymann, D.M.  
Deposited on : 2005-08-25  
Resolution : 1.15 Å(reported)

This is a Full wwPDB X-ray Structure Validation Report for a publicly released PDB entry.

We welcome your comments at [validation@mail.wwpdb.org](mailto:validation@mail.wwpdb.org)

A user guide is available at

<https://www.wwpdb.org/validation/2017/XrayValidationReportHelp>

with specific help available everywhere you see the ⓘ symbol.

---

The following versions of software and data (see [references ⓘ](#)) were used in the production of this report:

MolProbity : 4.02b-467  
Mogul : 1.8.0 (224370), CSD as540be (2019)  
Xtriage (Phenix) : 1.13  
EDS : 2.4  
buster-report : 1.1.7 (2018)  
Percentile statistics : 20171227.v01 (using entries in the PDB archive December 27th 2017)  
Refmac : 5.8.0158  
CCP4 : 7.0 (Gargrove)  
Ideal geometry (proteins) : Engh & Huber (2001)  
Ideal geometry (DNA, RNA) : Parkinson et al. (1996)  
Validation Pipeline (wwPDB-VP) : 2.4

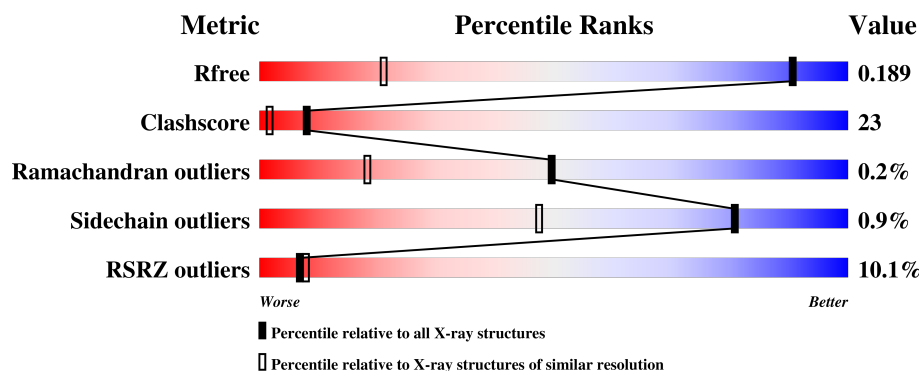
# 1 Overall quality at a glance

The following experimental techniques were used to determine the structure:

*X-RAY DIFFRACTION*

The reported resolution of this entry is 1.15 Å.

Percentile scores (ranging between 0-100) for global validation metrics of the entry are shown in the following graphic. The table shows the number of entries on which the scores are based.



Metric	Whole archive (#Entries)	Similar resolution (#Entries, resolution range(Å))
$R_{free}$	111664	1223 (1.18-1.10)
Clashscore	122126	1264 (1.18-1.10)
Ramachandran outliers	120053	1215 (1.18-1.10)
Sidechain outliers	120020	1212 (1.18-1.10)
RSRZ outliers	108989	1199 (1.18-1.10)

The table below summarises the geometric issues observed across the polymeric chains and their fit to the electron density. The red, orange, yellow and green segments on the lower bar indicate the fraction of residues that contain outliers for  $\geq 3$ , 2, 1 and 0 types of geometric quality criteria. A grey segment represents the fraction of residues that are not modelled. The numeric value for each fraction is indicated below the corresponding segment, with a dot representing fractions  $\leq 5\%$ . The upper red bar (where present) indicates the fraction of residues that have poor fit to the electron density. The numeric value is given above the bar.

Mol	Chain	Length	Quality of chain
1	A	297	<div> <div>7%</div> <div>66%</div> <div>33%</div> <div>.</div> </div>
1	B	297	<div> <div>13%</div> <div>62%</div> <div>36%</div> <div>.</div> </div>

The following table lists non-polymeric compounds, carbohydrate monomers and non-standard residues in protein, DNA, RNA chains that are outliers for geometric or electron-density-fit criteria:

Mol	Type	Chain	Res	Chirality	Geometry	Clashes	Electron density
2	GCP	B	1297	-	-	X	-

## 2 Entry composition [i](#)

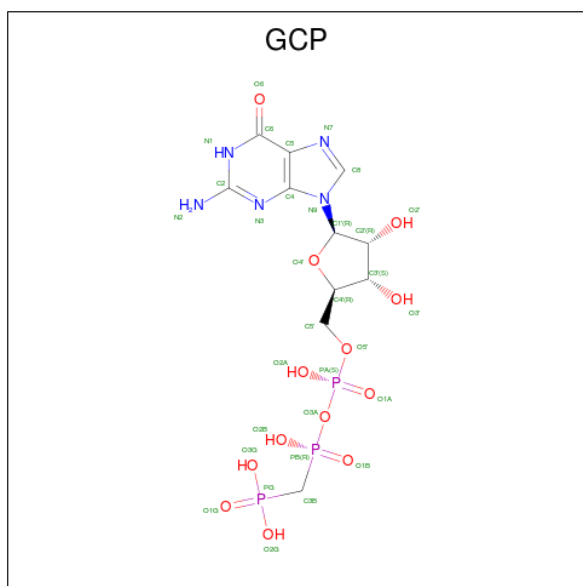
There are 4 unique types of molecules in this entry. The entry contains 17366 atoms, of which 8354 are hydrogens and 0 are deuteriums.

In the tables below, the ZeroOcc column contains the number of atoms modelled with zero occupancy, the AltConf column contains the number of residues with at least one atom in alternate conformation and the Trace column contains the number of residues modelled with at most 2 atoms.

- Molecule 1 is a protein called SIGNAL RECOGNITION PARTICLE PROTEIN.

Mol	Chain	Residues	Atoms						ZeroOcc	AltConf	Trace
1	A	297	Total	C	H	N	O	S	0	195	0
			7591	2388	3786	688	718	11			
1	B	296	Total	C	H	N	O	S	0	295	0
			9053	2842	4532	820	847	12			

- Molecule 2 is PHOSPHOMETHYLPHOSPHONIC ACID GUANYLATE ESTER (three-letter code: GCP) (formula:  $C_{11}H_{18}N_5O_{13}P_3$ ).



Mol	Chain	Residues	Atoms						ZeroOcc	AltConf
2	A	1	Total	C	H	N	O	P	0	1
			88	22	24	10	26	6		
2	B	1	Total	C	H	N	O	P	0	0
			44	11	12	5	13	3		

- Molecule 3 is CALCIUM ION (three-letter code: CA) (formula: Ca).

Mol	Chain	Residues	Atoms		ZeroOcc	AltConf
3	A	2	Total 2	Ca 2	0	0

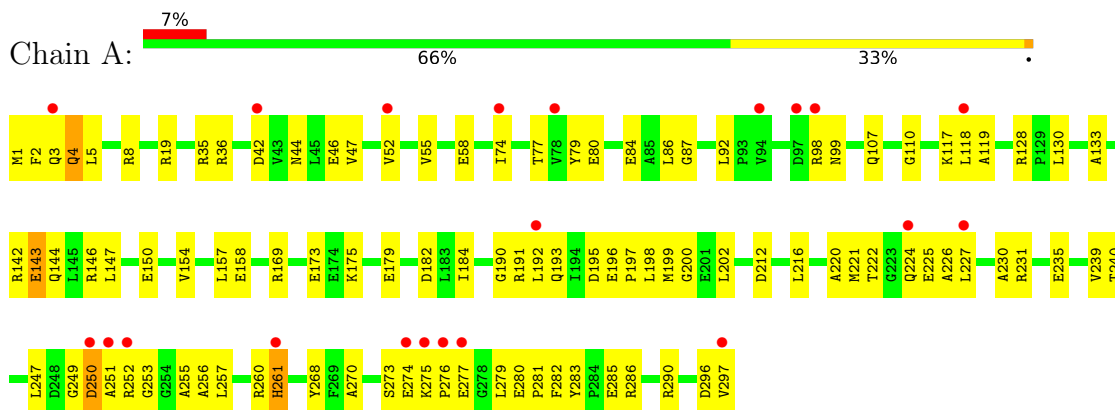
- Molecule 4 is water.

Mol	Chain	Residues	Atoms		ZeroOcc	AltConf
4	A	330	Total 332	O 332	0	2
4	B	255	Total 256	O 256	0	1

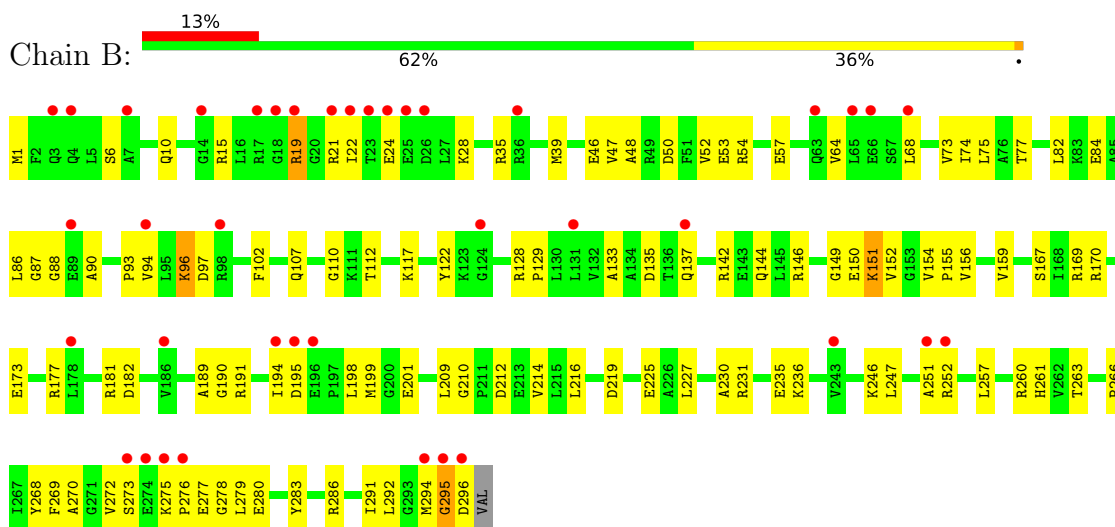
### 3 Residue-property plots

These plots are drawn for all protein, RNA and DNA chains in the entry. The first graphic for a chain summarises the proportions of the various outlier classes displayed in the second graphic. The second graphic shows the sequence view annotated by issues in geometry and electron density. Residues are color-coded according to the number of geometric quality criteria for which they contain at least one outlier: green = 0, yellow = 1, orange = 2 and red = 3 or more. A red dot above a residue indicates a poor fit to the electron density ( $RSRZ > 2$ ). Stretches of 2 or more consecutive residues without any outlier are shown as a green connector. Residues present in the sample, but not in the model, are shown in grey.

#### • Molecule 1: SIGNAL RECOGNITION PARTICLE PROTEIN



#### • Molecule 1: SIGNAL RECOGNITION PARTICLE PROTEIN



## 4 Data and refinement statistics

Property	Value	Source
Space group	C 1 2 1	Depositor
Cell constants a, b, c, $\alpha$ , $\beta$ , $\gamma$	109.01Å 54.44Å 98.83Å 90.00° 97.16° 90.00°	Depositor
Resolution (Å)	19.61 – 1.15 19.61 – 1.15	Depositor EDS
% Data completeness (in resolution range)	89.8 (19.61-1.15) 89.5 (19.61-1.15)	Depositor EDS
$R_{merge}$	0.06	Depositor
$R_{sym}$	(Not available)	Depositor
$\langle I/\sigma(I) \rangle$ <sup>1</sup>	3.49 (at 1.15Å)	Xtriage
Refinement program	REFMAC 5.2.0005	Depositor
R, $R_{free}$	0.143 , 0.180 0.156 , 0.189	Depositor DCC
$R_{free}$ test set	13065 reflections (7.14%)	wwPDB-VP
Wilson B-factor (Å <sup>2</sup> )	14.7	Xtriage
Anisotropy	0.075	Xtriage
Bulk solvent $k_{sol}$ (e/Å <sup>3</sup> ), $B_{sol}$ (Å <sup>2</sup> )	0.40 , 53.1	EDS
L-test for twinning <sup>2</sup>	$\langle  L  \rangle = 0.49$ , $\langle L^2 \rangle = 0.33$	Xtriage
Estimated twinning fraction	No twinning to report.	Xtriage
$F_o, F_c$ correlation	0.98	EDS
Total number of atoms	17366	wwPDB-VP
Average B, all atoms (Å <sup>2</sup> )	19.0	wwPDB-VP

Xtriage's analysis on translational NCS is as follows: *The largest off-origin peak in the Patterson function is 6.29% of the height of the origin peak. No significant pseudotranslation is detected.*

<sup>1</sup>Intensities estimated from amplitudes.

<sup>2</sup>Theoretical values of  $\langle |L| \rangle$ ,  $\langle L^2 \rangle$  for acentric reflections are 0.5, 0.333 respectively for untwinned datasets, and 0.375, 0.2 for perfectly twinned datasets.

## 5 Model quality

### 5.1 Standard geometry

Bond lengths and bond angles in the following residue types are not validated in this section: GCP, CA

The Z score for a bond length (or angle) is the number of standard deviations the observed value is removed from the expected value. A bond length (or angle) with  $|Z| > 5$  is considered an outlier worth inspection. RMSZ is the root-mean-square of all Z scores of the bond lengths (or angles).

Mol	Chain	Bond lengths		Bond angles	
		RMSZ	$\# Z  > 5$	RMSZ	$\# Z  > 5$
1	A	0.77	4/3850 (0.1%)	0.93	10/5189 (0.2%)
1	B	0.84	4/4587 (0.1%)	0.70	4/6182 (0.1%)
All	All	0.81	8/8437 (0.1%)	0.81	14/11371 (0.1%)

Chiral center outliers are detected by calculating the chiral volume of a chiral center and verifying if the center is modelled as a planar moiety or with the opposite hand. A planarity outlier is detected by checking planarity of atoms in a peptide group, atoms in a mainchain group or atoms of a sidechain that are expected to be planar.

Mol	Chain	#Chirality outliers	#Planarity outliers
1	B	0	1

All (8) bond length outliers are listed below:

Mol	Chain	Res	Type	Atoms	Z	Observed(Å)	Ideal(Å)
1	B	151[A]	LYS	CG-CD	33.39	2.65	1.52
1	B	151[B]	LYS	CG-CD	33.39	2.65	1.52
1	A	143[A]	GLU	C-N	23.16	1.87	1.34
1	A	143[B]	GLU	C-N	23.16	1.87	1.34
1	A	143[A]	GLU	CA-C	-12.70	1.20	1.52
1	A	143[B]	GLU	CA-C	-12.70	1.20	1.52
1	B	96[A]	LYS	CG-CD	6.95	1.76	1.52
1	B	96[B]	LYS	CG-CD	6.95	1.76	1.52

All (14) bond angle outliers are listed below:

Mol	Chain	Res	Type	Atoms	Z	Observed(°)	Ideal(°)
1	A	143[A]	GLU	CA-C-O	22.85	168.09	120.10
1	A	143[B]	GLU	CA-C-O	22.85	168.09	120.10
1	A	143[A]	GLU	O-C-N	-20.09	90.56	122.70

*Continued on next page...*



*Continued from previous page...*

Mol	Chain	Res	Type	Atoms	Z	Observed(°)	Ideal(°)
1	A	143[B]	GLU	O-C-N	-20.09	90.56	122.70
1	B	151[A]	LYS	CB-CG-CD	-12.67	78.67	111.60
1	B	151[B]	LYS	CB-CG-CD	-12.67	78.67	111.60
1	A	143[A]	GLU	CA-C-N	-7.22	101.31	117.20
1	A	143[B]	GLU	CA-C-N	-7.22	101.31	117.20
1	A	142[A]	ARG	NE-CZ-NH1	5.64	123.12	120.30
1	A	142[B]	ARG	NE-CZ-NH1	5.64	123.12	120.30
1	A	143[A]	GLU	N-CA-C	5.57	126.05	111.00
1	A	143[B]	GLU	N-CA-C	5.57	126.05	111.00
1	B	96[A]	LYS	CB-CG-CD	5.53	125.98	111.60
1	B	96[B]	LYS	CB-CG-CD	5.53	125.98	111.60

There are no chirality outliers.

All (1) planarity outliers are listed below:

Mol	Chain	Res	Type	Group
1	B	295[B]	GLY	Mainchain

## 5.2 Too-close contacts ⓘ

In the following table, the Non-H and H(model) columns list the number of non-hydrogen atoms and hydrogen atoms in the chain respectively. The H(added) column lists the number of hydrogen atoms added and optimized by MolProbity. The Clashes column lists the number of clashes within the asymmetric unit, whereas Symm-Clashes lists symmetry related clashes.

Mol	Chain	Non-H	H(model)	H(added)	Clashes	Symm-Clashes
1	A	3805	3786	3909	249	0
1	B	4521	4532	4704	134	0
2	A	64	24	28	6	0
2	B	32	12	14	14	0
3	A	2	0	0	0	0
4	A	332	0	0	62	2
4	B	256	0	0	43	2
All	All	9012	8354	8655	390	3

The all-atom clashscore is defined as the number of clashes found per 1000 atoms (including hydrogen atoms). The all-atom clashscore for this structure is 23.

All (390) close contacts within the same asymmetric unit are listed below, sorted by their clash magnitude.

Atom-1	Atom-2	Interatomic distance (Å)	Clash overlap (Å)
1:A:1[B]:MET:CE	1:A:252[B]:ARG:H	1.03	1.62
1:B:96[A]:LYS:CG	1:B:96[A]:LYS:CD	1.76	1.58
1:A:1[B]:MET:CE	1:A:251[B]:ALA:HB1	1.50	1.39
1:A:143[B]:GLU:C	1:A:144[B]:GLN:CA	1.89	1.39
1:A:1[B]:MET:HE2	1:A:252[B]:ARG:N	1.26	1.37
1:A:1[B]:MET:CB	1:A:251[B]:ALA:HB3	1.54	1.36
1:A:261[B]:HIS:CB	4:A:2279:HOH:O	1.68	1.35
1:B:231[B]:ARG:CG	1:B:235[B]:GLU:OE1	1.74	1.32
1:A:143[B]:GLU:CA	1:A:143[B]:GLU:C	1.98	1.32
1:A:1[B]:MET:CE	1:A:252[B]:ARG:N	1.78	1.31
1:A:198[B]:LEU:CD1	4:A:2230:HOH:O	1.66	1.30
1:A:147[B]:LEU:O	1:A:150[B]:GLU:HG3	1.32	1.30
1:B:231[A]:ARG:HG2	4:B:2061:HOH:O	1.23	1.29
1:A:1[B]:MET:SD	1:A:251[B]:ALA:HB1	1.73	1.28
1:A:198[B]:LEU:HD12	4:A:2230:HOH:O	1.23	1.28
1:B:231[B]:ARG:HG3	1:B:235[B]:GLU:OE1	1.18	1.27
1:A:235[A]:GLU:HG2	4:A:2257:HOH:O	1.16	1.27
1:A:79[A]:TYR:OH	1:A:285[A]:GLU:HG3	1.25	1.26
1:A:143[A]:GLU:C	1:A:144[A]:GLN:N	1.87	1.26
1:B:231[A]:ARG:HG3	4:B:2194:HOH:O	1.27	1.25
1:B:39[B]:MET:CE	1:B:48[B]:ALA:HB2	1.68	1.24
1:B:39[B]:MET:CE	1:B:48[B]:ALA:CB	2.15	1.23
1:A:199[B]:MET:CE	1:A:202[B]:LEU:HD12	1.69	1.23
1:A:84[B]:GLU:OE2	4:A:2109:HOH:O	1.55	1.23
1:A:256[A]:ALA:HB2	4:A:2273:HOH:O	1.11	1.22
1:A:79[A]:TYR:OH	1:A:285[A]:GLU:CG	1.87	1.21
1:B:252[B]:ARG:HA	4:B:2211:HOH:O	1.39	1.19
1:B:137[A]:GLN:CD	4:B:2113:HOH:O	1.82	1.18
2:B:1297:GCP:C3'	4:B:2252:HOH:O	1.72	1.18
1:A:42[B]:ASP:OD1	4:A:2056:HOH:O	1.61	1.15
1:A:261[B]:HIS:HB3	4:A:2279:HOH:O	1.28	1.14
1:A:260[B]:ARG:HD3	4:A:2278:HOH:O	1.45	1.12
1:B:212[A]:ASP:OD1	4:B:2182:HOH:O	1.63	1.12
1:A:1[B]:MET:SD	1:A:251[B]:ALA:CB	2.36	1.11
1:A:1[B]:MET:HE3	1:A:252[B]:ARG:H	1.11	1.11
1:A:117[A]:LYS:CE	1:A:275[A]:LYS:O	2.00	1.10
1:A:44[B]:ASN:HD21	1:A:46[B]:GLU:CG	1.64	1.10
1:A:182[B]:ASP:OD2	4:A:2210:HOH:O	1.66	1.09
1:A:58[B]:GLU:OE1	4:A:2083:HOH:O	1.68	1.09
1:A:1[B]:MET:CE	1:A:251[B]:ALA:CB	2.30	1.09
1:A:1[B]:MET:HE3	1:A:251[B]:ALA:HB1	1.14	1.09
1:A:147[B]:LEU:O	1:A:150[B]:GLU:CG	2.01	1.08

Continued on next page...

*Continued from previous page...*

Atom-1	Atom-2	Interatomic distance (Å)	Clash overlap (Å)
1:A:274[B]:GLU:OE1	2:A:1298[B]:GCP:N3	1.86	1.08
1:B:39[B]:MET:HE2	1:B:48[B]:ALA:CB	1.76	1.07
1:A:1[B]:MET:HG3	1:A:2[B]:PHE:CD1	1.91	1.06
1:A:195[A]:ASP:HB3	1:A:198[A]:LEU:HB2	1.35	1.05
1:B:189[B]:ALA:HB3	1:B:198[B]:LEU:HD11	1.37	1.04
1:A:147[B]:LEU:HA	1:A:150[B]:GLU:HG2	1.37	1.04
1:A:199[B]:MET:HE1	1:A:202[B]:LEU:HD12	1.08	1.04
1:A:117[A]:LYS:HE2	1:A:275[A]:LYS:O	1.58	1.04
1:A:44[B]:ASN:HD21	1:A:46[B]:GLU:HG3	1.12	1.04
1:A:195[A]:ASP:O	1:A:198[A]:LEU:HB3	1.57	1.03
1:A:247[A]:LEU:HD12	1:A:270[A]:ALA:HB1	1.37	1.03
1:A:256[A]:ALA:CB	4:A:2273:HOH:O	1.77	1.02
1:A:117[A]:LYS:HG2	1:A:276[A]:PRO:HA	1.37	1.02
1:A:286[A]:ARG:O	1:A:290[A]:ARG:HG2	1.60	1.02
1:A:1[B]:MET:HB3	1:A:251[B]:ALA:CB	1.90	1.02
1:A:285[A]:GLU:HG2	4:A:2105:HOH:O	1.56	1.02
2:B:1297:GCP:C2'	4:B:2252:HOH:O	1.98	1.01
1:A:200[B]:GLY:HA3	4:A:2223:HOH:O	1.59	1.01
1:B:251[B]:ALA:O	4:B:2211:HOH:O	1.74	1.01
1:A:252[A]:ARG:O	4:A:2269:HOH:O	1.76	1.01
1:A:1[B]:MET:HE3	1:A:251[B]:ALA:CB	1.87	1.01
1:B:39[B]:MET:HE3	1:B:48[B]:ALA:CB	1.89	0.99
1:A:79[B]:TYR:OH	4:A:2105:HOH:O	1.81	0.99
1:A:117[A]:LYS:NZ	1:A:275[A]:LYS:O	1.96	0.98
1:B:82[B]:LEU:CD1	1:B:257[B]:LEU:HD21	1.94	0.97
1:A:297[A]:VAL:C	4:A:2313:HOH:O	2.01	0.97
1:B:272[B]:VAL:O	4:B:2231:HOH:O	1.82	0.97
1:B:122[B]:TYR:HH	1:B:269[B]:PHE:HZ	1.10	0.97
1:B:110[B]:GLY:HA2	2:B:1297:GCP:PA	2.05	0.96
1:A:199[B]:MET:HE1	1:A:202[B]:LEU:CD1	1.94	0.95
1:A:58[B]:GLU:OE1	4:A:2085:HOH:O	1.85	0.95
1:B:128[A]:ARG:HD3	4:B:2154:HOH:O	1.65	0.95
1:B:231[B]:ARG:HG2	1:B:235[B]:GLU:OE1	1.64	0.95
1:A:1[B]:MET:HB3	1:A:251[B]:ALA:HB3	0.97	0.95
1:A:268[B]:TYR:OH	4:A:2292:HOH:O	1.84	0.94
1:A:117[A]:LYS:HE2	1:A:275[A]:LYS:C	1.88	0.94
1:B:82[B]:LEU:HD11	1:B:257[B]:LEU:HD21	1.50	0.93
1:A:44[B]:ASN:ND2	1:A:46[B]:GLU:CG	2.31	0.93
1:A:1[B]:MET:HE1	1:A:253[B]:GLY:H	1.32	0.92
1:A:200[A]:GLY:HA3	4:A:2223:HOH:O	1.68	0.91
1:B:189[B]:ALA:CB	1:B:198[B]:LEU:HD11	2.01	0.90

*Continued on next page...*

*Continued from previous page...*

Atom-1	Atom-2	Interatomic distance (Å)	Clash overlap (Å)
1:A:1[B]:MET:CB	1:A:251[B]:ALA:CB	2.48	0.90
1:A:273[A]:SER:OG	1:A:275[A]:LYS:HG2	1.69	0.90
1:A:195[A]:ASP:HB3	1:A:198[A]:LEU:CB	2.01	0.89
1:A:249[B]:GLY:O	1:A:250[B]:ASP:C	2.07	0.89
1:A:117[A]:LYS:CG	1:A:276[A]:PRO:HA	2.03	0.88
1:A:117[A]:LYS:HG2	1:A:276[A]:PRO:CA	2.04	0.88
1:A:212[B]:ASP:OD2	4:A:2242:HOH:O	1.91	0.88
1:A:117[A]:LYS:HG2	1:A:276[A]:PRO:O	1.74	0.87
1:A:44[B]:ASN:ND2	1:A:46[B]:GLU:HG2	1.87	0.87
2:B:1297:GCP:H3'	4:B:2252:HOH:O	1.53	0.86
2:B:1297:GCP:O1A	4:B:2255:HOH:O	1.93	0.85
1:A:143[B]:GLU:C	1:A:144[B]:GLN:N	0.81	0.85
1:A:42[B]:ASP:OD1	4:A:2057:HOH:O	1.94	0.85
1:A:58[B]:GLU:CD	4:A:2083:HOH:O	2.10	0.84
1:A:297[A]:VAL:O	4:A:2312:HOH:O	1.94	0.84
1:B:39[B]:MET:HE3	1:B:48[B]:ALA:HB3	1.57	0.84
1:A:175[A]:LYS:NZ	1:A:179[A]:GLU:OE2	2.09	0.83
1:A:247[A]:LEU:CD1	1:A:270[A]:ALA:HB1	2.08	0.83
1:A:283[A]:TYR:CE2	1:A:286[A]:ARG:NH1	2.47	0.83
1:B:39[B]:MET:CE	1:B:48[B]:ALA:HB3	2.07	0.83
1:A:143[A]:GLU:CA	1:A:144[A]:GLN:N	2.41	0.81
1:B:39[B]:MET:HE3	1:B:48[B]:ALA:HB2	1.54	0.81
1:A:99[B]:ASN:OD1	4:A:2242:HOH:O	1.99	0.81
1:A:44[B]:ASN:ND2	1:A:46[B]:GLU:HG3	1.93	0.81
1:A:199[B]:MET:CE	1:A:202[B]:LEU:CD1	2.54	0.80
2:B:1297:GCP:H2'	4:B:2252:HOH:O	1.69	0.80
1:A:261[B]:HIS:HB2	4:A:2279:HOH:O	1.49	0.80
1:A:200[B]:GLY:CA	4:A:2223:HOH:O	2.22	0.80
1:A:1[B]:MET:CG	1:A:2[B]:PHE:CD1	2.65	0.79
1:A:1[B]:MET:HE3	1:A:252[B]:ARG:N	1.75	0.79
1:A:1[B]:MET:CG	1:A:251[B]:ALA:HB3	2.12	0.78
1:A:1[B]:MET:CE	1:A:253[B]:GLY:H	1.97	0.78
1:A:143[B]:GLU:CA	1:A:144[B]:GLN:N	2.45	0.78
1:A:1[B]:MET:HE1	1:A:252[B]:ARG:H	1.38	0.78
1:A:195[A]:ASP:O	1:A:198[A]:LEU:CB	2.31	0.77
1:B:177[A]:ARG:NH1	4:B:2151:HOH:O	2.15	0.77
1:B:167[B]:SER:O	1:B:170[B]:ARG:HG2	1.85	0.77
1:A:196[B]:GLU:O	4:A:2223:HOH:O	2.02	0.76
1:A:198[B]:LEU:HD11	4:A:2230:HOH:O	1.50	0.76
1:B:251[B]:ALA:HB1	4:B:2210:HOH:O	1.84	0.76
1:A:231[B]:ARG:NE	1:A:235[B]:GLU:OE1	2.19	0.76

*Continued on next page...*

*Continued from previous page...*

Atom-1	Atom-2	Interatomic distance (Å)	Clash overlap (Å)
1:A:260[B]:ARG:HB3	4:A:2280:HOH:O	1.85	0.76
1:A:130[A]:LEU:HB3	1:A:184[A]:ILE:CD1	2.15	0.76
1:B:39[B]:MET:HE2	1:B:48[B]:ALA:HB1	1.66	0.75
1:A:273[A]:SER:HG	1:A:275[A]:LYS:HG2	1.50	0.75
1:A:147[B]:LEU:CA	1:A:150[B]:GLU:HG2	2.14	0.75
1:A:182[A]:ASP:OD2	4:A:2210:HOH:O	2.05	0.75
1:A:195[A]:ASP:CB	1:A:198[A]:LEU:HB2	2.14	0.74
1:A:4[B]:GLN:CD	1:A:8[B]:ARG:NH1	2.41	0.74
1:B:261[B]:HIS:ND1	4:B:2222:HOH:O	2.19	0.74
1:B:151[A]:LYS:CD	1:B:151[A]:LYS:CG	2.66	0.73
1:A:283[B]:TYR:HD1	1:A:285[B]:GLU:OE2	1.72	0.73
1:B:35[B]:ARG:HB2	1:B:52[B]:VAL:HG11	1.70	0.73
1:A:117[A]:LYS:HG2	1:A:276[A]:PRO:C	2.09	0.73
1:B:82[B]:LEU:CD1	1:B:257[B]:LEU:CD2	2.66	0.73
1:A:42[A]:ASP:OD1	1:A:252[A]:ARG:HD2	1.88	0.72
1:A:1[B]:MET:HE2	1:A:252[B]:ARG:CA	2.17	0.72
1:A:224[B]:GLN:NE2	1:A:227[B]:LEU:HD12	2.04	0.72
1:A:297[A]:VAL:O	4:A:2313:HOH:O	2.04	0.72
1:B:252[B]:ARG:CA	4:B:2211:HOH:O	2.12	0.72
1:B:47[B]:VAL:HG22	1:B:261[B]:HIS:CG	2.25	0.71
1:A:1[B]:MET:HE3	1:A:251[B]:ALA:CA	2.19	0.71
1:A:1[B]:MET:HG3	1:A:2[B]:PHE:HD1	1.53	0.71
1:A:290[A]:ARG:HD2	4:A:2313:HOH:O	1.90	0.71
1:A:4[B]:GLN:NE2	1:A:8[B]:ARG:HH12	1.89	0.71
1:A:256[B]:ALA:O	4:A:2274:HOH:O	2.09	0.70
1:A:143[A]:GLU:O	1:A:144[A]:GLN:N	2.24	0.70
1:B:82[B]:LEU:HD12	1:B:257[B]:LEU:CD2	2.21	0.70
1:B:82[B]:LEU:HD12	1:B:257[B]:LEU:HD21	1.74	0.69
1:A:143[B]:GLU:CA	1:A:143[B]:GLU:O	2.40	0.69
1:B:169[B]:ARG:O	1:B:173[B]:GLU:HG3	1.92	0.68
1:B:22[A]:ILE:HD11	1:B:64[A]:VAL:HG22	1.74	0.68
1:A:260[B]:ARG:CD	4:A:2278:HOH:O	2.19	0.68
1:A:274[B]:GLU:OE1	2:A:1298[B]:GCP:C4	2.42	0.68
1:A:44[B]:ASN:HD22	1:A:44[B]:ASN:C	1.96	0.68
1:B:110[B]:GLY:CA	2:B:1297:GCP:PA	2.82	0.68
1:A:1[B]:MET:CE	1:A:251[B]:ALA:C	2.62	0.68
1:B:110[B]:GLY:N	2:B:1297:GCP:O1A	2.27	0.67
1:B:75[A]:LEU:HG	1:B:294[A]:MET:CE	2.23	0.67
1:B:39[B]:MET:HE1	1:B:48[B]:ALA:HB2	1.73	0.67
1:A:42[A]:ASP:O	1:A:224[A]:GLN:NE2	2.25	0.67
1:A:283[B]:TYR:CD1	1:A:285[B]:GLU:OE2	2.47	0.67

*Continued on next page...*

*Continued from previous page...*

Atom-1	Atom-2	Interatomic distance (Å)	Clash overlap (Å)
1:A:107[A]:GLN:HB2	1:A:191[A]:ARG:O	1.94	0.66
1:B:295[B]:GLY:O	1:B:296:ASP:OD2	2.07	0.66
1:B:137[A]:GLN:OE1	4:B:2113:HOH:O	1.96	0.66
1:B:235[B]:GLU:OE2	4:B:2202:HOH:O	2.08	0.66
1:A:285[A]:GLU:CG	4:A:2105:HOH:O	2.28	0.66
1:A:84[B]:GLU:CD	4:A:2109:HOH:O	2.14	0.66
1:A:55:VAL:HG13	1:A:77[B]:THR:HG23	1.77	0.66
1:A:1[B]:MET:HG3	1:A:2[B]:PHE:CE1	2.30	0.65
1:A:46[B]:GLU:HG3	1:A:47:VAL:HG23	1.78	0.65
1:B:82[A]:LEU:HD12	1:B:292[A]:LEU:HD11	1.78	0.65
1:A:261[A]:HIS:ND1	4:A:2279:HOH:O	2.29	0.65
1:A:107[A]:GLN:HB2	1:A:191[A]:ARG:C	2.17	0.65
1:A:249[B]:GLY:O	1:A:250[B]:ASP:O	2.14	0.65
1:A:4[B]:GLN:CG	1:A:8[B]:ARG:NH1	2.60	0.65
1:A:130[A]:LEU:HB3	1:A:184[A]:ILE:HD12	1.79	0.65
1:A:143[B]:GLU:C	1:A:144[B]:GLN:C	2.56	0.64
1:B:247[A]:LEU:HD12	1:B:270[A]:ALA:HB1	1.78	0.64
1:B:1[A]:MET:SD	1:B:247[A]:LEU:HD23	2.38	0.64
1:A:1[B]:MET:CE	1:A:253[B]:GLY:N	2.61	0.63
1:A:199[B]:MET:HE2	1:A:202[B]:LEU:HD12	1.74	0.63
1:A:1[B]:MET:SD	1:A:251[B]:ALA:HB3	2.28	0.63
1:A:275[A]:LYS:HE2	1:A:277[A]:GLU:HB3	1.81	0.62
1:A:8[B]:ARG:CD	4:A:2004:HOH:O	2.48	0.62
1:B:24[B]:GLU:HG3	1:B:28[B]:LYS:HZ2	1.65	0.62
1:A:283[B]:TYR:HB3	1:A:285[B]:GLU:OE2	1.99	0.61
1:B:261[A]:HIS:HD2	4:B:2222:HOH:O	1.82	0.61
1:A:35[A]:ARG:HB2	1:A:52[A]:VAL:HG21	1.82	0.61
1:A:130[A]:LEU:HD23	1:A:184[A]:ILE:HD12	1.81	0.61
1:A:255[B]:ALA:HB2	4:A:2249:HOH:O	2.01	0.60
1:A:79[A]:TYR:OH	1:A:285[A]:GLU:HG2	1.97	0.60
1:A:190[A]:GLY:HA3	2:A:1298[A]:GCP:O3G	2.01	0.60
1:A:2[A]:PHE:CD2	1:A:253[A]:GLY:HA3	2.36	0.60
1:A:117[A]:LYS:CG	1:A:276[A]:PRO:O	2.47	0.60
1:B:110[B]:GLY:HA2	2:B:1297:GCP:O5'	2.01	0.60
1:B:151[A]:LYS:CB	1:B:151[A]:LYS:CD	2.78	0.60
1:B:167[B]:SER:HA	1:B:170[B]:ARG:HE	1.66	0.60
1:A:200[B]:GLY:N	4:A:2223:HOH:O	2.28	0.60
1:A:283[A]:TYR:CD2	1:A:286[A]:ARG:NH1	2.70	0.60
1:A:1[B]:MET:CG	1:A:2[B]:PHE:CE1	2.85	0.60
1:B:6[B]:SER:OG	1:B:10[B]:GLN:NE2	2.34	0.59
1:A:146[A]:ARG:NH2	1:A:158[A]:GLU:OE1	2.31	0.59

*Continued on next page...*

*Continued from previous page...*

Atom-1	Atom-2	Interatomic distance (Å)	Clash overlap (Å)
1:A:42[B]:ASP:CB	4:A:2056:HOH:O	2.51	0.59
1:A:4[B]:GLN:CD	1:A:8[B]:ARG:HH12	2.05	0.59
1:B:198[B]:LEU:O	1:B:201[B]:GLU:HB2	2.01	0.59
1:B:117[B]:LYS:HE3	1:B:279[B]:LEU:HB2	1.83	0.58
1:A:1[B]:MET:C	1:A:3[B]:GLN:H	2.06	0.58
1:A:1[B]:MET:CG	1:A:2[B]:PHE:HD1	2.10	0.58
1:B:247[A]:LEU:CD1	1:B:270[A]:ALA:HB1	2.33	0.58
1:A:274[B]:GLU:CD	2:A:1298[B]:GCP:N3	2.57	0.58
1:A:86:LEU:HD21	1:A:257[A]:LEU:HD23	1.84	0.58
1:B:87[B]:GLY:HA2	1:B:260[B]:ARG:HD2	1.86	0.58
1:A:117[A]:LYS:HE2	1:A:276[A]:PRO:N	2.19	0.58
1:A:55:VAL:HG13	1:A:77[B]:THR:CG2	2.33	0.58
1:B:167[B]:SER:HA	1:B:170[B]:ARG:NE	2.19	0.58
1:A:119[A]:ALA:HB1	1:A:154[A]:VAL:HG11	1.86	0.57
1:A:1[B]:MET:N	1:A:247[B]:LEU:O	2.34	0.57
1:B:68[B]:LEU:HG	4:B:2075:HOH:O	2.04	0.57
1:B:225[B]:GLU:HG2	4:B:2015:HOH:O	2.04	0.57
1:B:261[B]:HIS:CE1	4:B:2222:HOH:O	2.58	0.56
1:A:117[A]:LYS:HE2	1:A:276[A]:PRO:CA	2.35	0.56
1:A:296[A]:ASP:O	1:A:297[A]:VAL:O	2.23	0.56
1:A:147[B]:LEU:C	1:A:150[B]:GLU:CG	2.73	0.56
1:A:290[A]:ARG:NH1	4:A:2305:HOH:O	2.38	0.56
1:A:130[A]:LEU:HB3	1:A:184[A]:ILE:HD13	1.85	0.56
1:A:98[A]:ARG:HB3	4:A:2069:HOH:O	2.05	0.56
1:B:135[B]:ASP:O	1:B:142[B]:ARG:NH1	2.27	0.56
1:B:110[B]:GLY:CA	2:B:1297:GCP:O1A	2.54	0.56
1:A:1[B]:MET:HE2	1:A:251[B]:ALA:C	2.14	0.56
1:A:285[A]:GLU:CD	4:A:2105:HOH:O	2.44	0.56
1:B:251[B]:ALA:CB	4:B:2210:HOH:O	2.48	0.55
1:A:216[B]:LEU:HD21	1:A:230[B]:ALA:HA	1.88	0.55
1:B:24[B]:GLU:HG3	1:B:28[B]:LYS:NZ	2.21	0.55
1:A:283[A]:TYR:CD2	1:A:286[A]:ARG:HD2	2.42	0.55
1:A:4[B]:GLN:HG3	1:A:8[B]:ARG:HH11	1.72	0.55
1:B:236[A]:LYS:HE2	4:B:2202:HOH:O	2.05	0.55
1:A:8[B]:ARG:HD3	4:A:2004:HOH:O	2.06	0.55
1:A:260[B]:ARG:HG3	4:A:2277:HOH:O	2.07	0.54
1:A:2[A]:PHE:CE2	1:A:253[A]:GLY:HA3	2.42	0.54
1:A:195[A]:ASP:HB3	1:A:198[A]:LEU:HD22	1.89	0.54
1:A:1[B]:MET:HE3	1:A:251[B]:ALA:C	2.27	0.54
1:A:79[A]:TYR:HH	1:A:285[A]:GLU:CG	2.14	0.54
1:A:74:ILE:HA	1:A:77[B]:THR:HG22	1.90	0.53

*Continued on next page...*



*Continued from previous page...*

Atom-1	Atom-2	Interatomic distance (Å)	Clash overlap (Å)
1:B:107[B]:GLN:HG3	4:B:2159:HOH:O	2.07	0.53
1:B:195[B]:ASP:O	1:B:199[B]:MET:HG2	2.09	0.52
1:B:209[B]:LEU:O	1:B:210[B]:GLY:C	2.47	0.52
1:B:19[A]:ARG:HH11	1:B:19[A]:ARG:HB2	1.74	0.52
1:A:46[B]:GLU:HG3	1:A:47:VAL:N	2.24	0.52
1:B:283[A]:TYR:HB3	1:B:286[A]:ARG:HG3	1.90	0.52
1:B:50[A]:ASP:OD2	1:B:261[A]:HIS:HE1	1.93	0.52
1:B:137[A]:GLN:NE2	4:B:2115:HOH:O	2.42	0.52
1:B:216[A]:LEU:CD2	1:B:230[A]:ALA:HA	2.40	0.52
1:B:227[A]:LEU:HD12	4:B:2190:HOH:O	2.10	0.51
1:B:94[A]:VAL:HG23	4:B:2183:HOH:O	2.10	0.51
1:B:151[A]:LYS:CD	1:B:151[A]:LYS:HB2	2.41	0.51
1:B:54[A]:ARG:HH12	1:B:84[A]:GLU:HG3	1.74	0.51
1:A:117[A]:LYS:HE2	1:A:276[A]:PRO:HA	1.92	0.51
1:B:133[B]:ALA:O	1:B:159[B]:VAL:HG22	2.10	0.51
1:B:283[B]:TYR:OH	4:B:2237:HOH:O	2.16	0.51
1:B:90[B]:ALA:HB2	1:B:283[B]:TYR:HD1	1.76	0.51
1:A:107[B]:GLN:NE2	1:A:192[B]:LEU:HD21	2.26	0.51
1:A:92[A]:LEU:HA	1:A:268[A]:TYR:CD1	2.46	0.50
1:A:128[B]:ARG:NH1	4:A:2210:HOH:O	2.44	0.50
1:A:255[B]:ALA:CB	4:A:2249:HOH:O	2.58	0.50
1:A:249[B]:GLY:O	1:A:251[B]:ALA:HB2	2.12	0.50
1:B:107[B]:GLN:HA	2:B:1297:GCP:O3G	2.12	0.50
1:B:73[A]:VAL:O	1:B:77[A]:THR:HG23	2.12	0.50
1:A:147[B]:LEU:C	1:A:150[B]:GLU:HG2	2.32	0.50
1:A:79[A]:TYR:OH	1:A:285[A]:GLU:CD	2.49	0.49
1:B:112[B]:THR:OG1	2:B:1297:GCP:O1G	2.23	0.49
1:A:147[B]:LEU:O	1:A:150[B]:GLU:HG2	2.06	0.49
1:A:1[B]:MET:CE	1:A:251[B]:ALA:CA	2.87	0.49
1:B:263[B]:THR:HG22	4:B:2194:HOH:O	2.12	0.49
1:B:216[A]:LEU:HD21	1:B:230[A]:ALA:HA	1.95	0.49
1:B:231[A]:ARG:CG	4:B:2061:HOH:O	2.06	0.49
1:A:4[B]:GLN:HG3	1:A:8[B]:ARG:NH1	2.27	0.49
2:A:1298[B]:GCP:O1G	2:A:1298[B]:GCP:O1A	2.30	0.48
1:A:290[B]:ARG:HD3	4:A:2313:HOH:O	2.13	0.48
1:B:53[B]:GLU:OE1	1:B:57[B]:GLU:OE2	2.31	0.48
1:A:1[B]:MET:C	1:A:3[B]:GLN:N	2.67	0.48
1:B:137[A]:GLN:CG	4:B:2113:HOH:O	2.46	0.48
2:B:1297:GCP:PA	4:B:2255:HOH:O	2.65	0.48
1:A:1[B]:MET:HB2	1:A:251[B]:ALA:HB3	1.77	0.48
1:A:285[B]:GLU:H	1:A:285[B]:GLU:CD	2.17	0.48

*Continued on next page...*



*Continued from previous page...*

Atom-1	Atom-2	Interatomic distance (Å)	Clash overlap (Å)
1:A:118[B]:LEU:HD23	1:A:279[B]:LEU:HD21	1.95	0.47
1:A:133[A]:ALA:HB1	4:A:2142:HOH:O	2.14	0.47
1:A:44[B]:ASN:HD21	1:A:47:VAL:HG23	1.79	0.47
1:A:290[A]:ARG:CZ	4:A:2305:HOH:O	2.62	0.47
1:A:36[B]:ARG:HG3	4:A:2039:HOH:O	2.14	0.47
1:A:4[B]:GLN:CG	1:A:8[B]:ARG:HH11	2.27	0.47
1:B:86[B]:LEU:HG	1:B:257[B]:LEU:HD23	1.95	0.47
1:A:117[A]:LYS:NZ	1:A:273[A]:SER:O	2.47	0.47
1:B:75[A]:LEU:HG	1:B:294[A]:MET:HE3	1.96	0.47
1:B:97[A]:ASP:O	1:B:182[A]:ASP:HB2	2.14	0.47
1:B:137[B]:GLN:CG	4:B:2113:HOH:O	2.62	0.47
1:B:149[B]:GLY:HA3	1:B:156[B]:VAL:HG23	1.97	0.47
1:A:2[A]:PHE:CE2	1:A:253[A]:GLY:CA	2.98	0.47
1:A:4[A]:GLN:HG3	1:A:5[A]:LEU:H	1.79	0.47
1:B:146[B]:ARG:NH1	1:B:150[B]:GLU:OE1	2.47	0.47
1:B:82[B]:LEU:HD21	1:B:291[B]:ILE:CD1	2.45	0.46
1:A:196[A]:GLU:HB3	1:A:197[A]:PRO:HD3	1.98	0.46
1:A:222[B]:THR:OG1	1:A:226[B]:ALA:HB2	2.15	0.46
1:A:92[B]:LEU:HD21	1:A:281[B]:PRO:HB3	1.98	0.46
1:A:79[A]:TYR:HH	1:A:285[A]:GLU:CD	2.19	0.46
1:B:15[A]:ARG:O	1:B:19[A]:ARG:NE	2.48	0.46
1:B:272[A]:VAL:HG11	1:B:280[A]:GLU:OE1	2.14	0.46
1:B:117[A]:LYS:HE2	4:B:2105:HOH:O	2.16	0.46
1:B:129[A]:PRO:HD2	4:B:2152:HOH:O	2.14	0.46
1:B:149[B]:GLY:HA3	1:B:156[B]:VAL:CG2	2.45	0.46
1:B:84[B]:GLU:HA	1:B:88[B]:GLY:HA2	1.98	0.46
1:A:270[A]:ALA:HB2	1:A:282[A]:PHE:HD1	1.82	0.45
1:B:219[B]:ASP:CG	1:B:246[B]:LYS:HD2	2.37	0.45
1:B:82[B]:LEU:HD12	1:B:257[B]:LEU:HD22	1.98	0.45
1:A:110:GLY:HA2	2:A:1298[A]:GCP:H8	1.99	0.45
1:B:194[B]:ILE:HG12	4:B:2162:HOH:O	2.16	0.45
1:A:200[A]:GLY:CA	4:A:2223:HOH:O	2.46	0.44
1:B:144[B]:GLN:HE22	2:B:1297:GCP:H3B2	1.81	0.44
1:B:270[B]:ALA:O	1:B:279[B]:LEU:HD12	2.18	0.44
1:B:152[B]:VAL:HG23	1:B:154[B]:VAL:HG23	1.98	0.44
1:B:46[B]:GLU:OE2	1:B:261[B]:HIS:HE1	2.01	0.44
1:B:275[B]:LYS:C	1:B:277[B]:GLU:N	2.71	0.44
1:A:4[B]:GLN:NE2	1:A:8[B]:ARG:NH1	2.59	0.44
1:A:239[B]:VAL:HG12	1:A:240[B]:THR:N	2.33	0.44
1:A:296[A]:ASP:O	1:A:297[A]:VAL:C	2.56	0.44
1:A:221[A]:MET:SD	1:A:249[A]:GLY:HA3	2.58	0.43

*Continued on next page...*

*Continued from previous page...*

Atom-1	Atom-2	Interatomic distance (Å)	Clash overlap (Å)
1:A:231[B]:ARG:HG2	1:A:235[B]:GLU:OE1	2.17	0.43
1:B:261[A]:HIS:CD2	4:B:2222:HOH:O	2.64	0.43
1:B:64[B]:VAL:HG21	1:B:74[B]:ILE:HD11	1.99	0.43
1:A:146[A]:ARG:NE	1:A:158[A]:GLU:OE2	2.51	0.43
1:A:283[B]:TYR:CB	1:A:285[B]:GLU:OE2	2.64	0.43
1:B:137[B]:GLN:HG3	4:B:2113:HOH:O	2.18	0.43
1:A:44[B]:ASN:ND2	1:A:44[B]:ASN:C	2.68	0.43
1:B:53[B]:GLU:O	1:B:57[B]:GLU:HG3	2.18	0.43
1:B:266[A]:PRO:HA	4:B:2229:HOH:O	2.18	0.43
1:B:189[B]:ALA:HB1	1:B:198[B]:LEU:HD11	1.93	0.43
1:B:90[B]:ALA:HB2	1:B:283[B]:TYR:CD1	2.53	0.43
1:A:1[B]:MET:CE	1:A:252[B]:ARG:CA	2.84	0.42
1:A:1[A]:MET:SD	1:A:220[A]:ALA:HB1	2.59	0.42
1:A:256[A]:ALA:HB3	4:A:2273:HOH:O	1.79	0.42
1:A:283[A]:TYR:CE2	1:A:286[A]:ARG:CZ	3.01	0.42
1:A:79[A]:TYR:HH	1:A:285[A]:GLU:HG3	1.66	0.42
1:A:1[B]:MET:O	1:A:2[B]:PHE:HB2	2.20	0.42
1:A:192[B]:LEU:HB2	1:A:193[B]:GLN:OE1	2.20	0.42
1:A:196[A]:GLU:N	1:A:197[A]:PRO:CD	2.83	0.42
1:A:80[B]:GLU:HG3	4:A:2109:HOH:O	2.19	0.42
1:A:1[B]:MET:HE2	1:A:253[B]:GLY:N	2.33	0.42
1:B:273[B]:SER:OG	1:B:278[B]:GLY:HA3	2.20	0.42
1:B:117[B]:LYS:HG2	1:B:276[B]:PRO:HA	2.02	0.42
1:A:1[A]:MET:SD	1:A:220[A]:ALA:CB	3.07	0.42
1:A:92[A]:LEU:CA	1:A:268[A]:TYR:CD1	3.03	0.42
1:A:280[A]:GLU:HB2	1:A:281[A]:PRO:HD2	2.02	0.42
1:A:224[B]:GLN:HE22	1:A:227[B]:LEU:HD12	1.81	0.42
1:A:44[A]:ASN:ND2	4:A:2061:HOH:O	2.53	0.42
1:A:283[A]:TYR:CD2	1:A:286[A]:ARG:CZ	3.03	0.41
1:B:24[B]:GLU:CG	1:B:28[B]:LYS:NZ	2.83	0.41
1:A:117[B]:LYS:HD3	1:A:279[B]:LEU:HB2	2.01	0.41
1:A:1[B]:MET:O	1:A:3[B]:GLN:N	2.53	0.41
1:B:102[B]:PHE:HB2	1:B:214[B]:VAL:HA	2.02	0.41
1:B:107[B]:GLN:CG	4:B:2159:HOH:O	2.66	0.41
1:B:93[B]:PRO:HD3	1:B:268[B]:TYR:CG	2.55	0.41
1:A:157[B]:LEU:C	1:A:157[B]:LEU:HD23	2.41	0.41
1:B:167[B]:SER:OG	1:B:170[B]:ARG:NH2	2.52	0.41
1:A:169:ARG:O	1:A:173[B]:GLU:HG2	2.21	0.41
1:A:253[B]:GLY:O	1:A:257[B]:LEU:HD23	2.20	0.41
1:B:47[B]:VAL:HG22	1:B:261[B]:HIS:CD2	2.55	0.41
1:A:107[A]:GLN:N	1:A:191[A]:ARG:O	2.35	0.41

*Continued on next page...*

Continued from previous page...

Atom-1	Atom-2	Interatomic distance (Å)	Clash overlap (Å)
1:A:239[B]:VAL:CG1	1:A:240[B]:THR:N	2.84	0.41
1:A:87:GLY:HA2	1:A:260[B]:ARG:HD2	2.01	0.41
1:B:216[B]:LEU:CD2	1:B:230[B]:ALA:HA	2.50	0.41
1:A:199[B]:MET:HA	1:A:199[B]:MET:HE2	2.02	0.41
1:A:222[B]:THR:O	1:A:225[B]:GLU:HB2	2.21	0.41
1:A:2[A]:PHE:HA	4:A:2269:HOH:O	2.20	0.41
1:B:137[A]:GLN:HB2	4:B:2113:HOH:O	2.20	0.41
1:A:261[A]:HIS:HB2	4:A:2280:HOH:O	2.21	0.41
1:B:198[B]:LEU:HA	1:B:201[B]:GLU:OE2	2.21	0.41
1:A:117[B]:LYS:CE	4:A:2129:HOH:O	2.61	0.41
1:A:117[B]:LYS:NZ	4:A:2129:HOH:O	1.95	0.41
1:B:155[B]:PRO:HG3	1:B:181[B]:ARG:CZ	2.51	0.41
1:B:190[B]:GLY:O	1:B:191[B]:ARG:HD3	2.21	0.41
1:A:2[B]:PHE:CD1	1:A:2[B]:PHE:N	2.89	0.40
1:B:21[B]:ARG:NH2	1:B:68[B]:LEU:HD21	2.37	0.40
1:A:235[A]:GLU:CG	4:A:2257:HOH:O	2.04	0.40
1:B:219[B]:ASP:OD2	1:B:246[B]:LYS:HD2	2.21	0.40
1:A:195[A]:ASP:HB3	1:A:198[A]:LEU:CD2	2.49	0.40
1:A:2[B]:PHE:O	1:A:3[B]:GLN:C	2.60	0.40

All (3) symmetry-related close contacts are listed below. The label for Atom-2 includes the symmetry operator and encoded unit-cell translations to be applied.

Atom-1	Atom-2	Interatomic distance (Å)	Clash overlap (Å)
4:B:2178:HOH:O	4:B:2217:HOH:O[2_656]	1.95	0.25
4:A:2305:HOH:O	4:B:2140:HOH:O[2_656]	2.07	0.13
4:A:2164:HOH:O	4:A:2181:HOH:O[4_645]	2.10	0.10

## 5.3 Torsion angles ⓘ

### 5.3.1 Protein backbone ⓘ

In the following table, the Percentiles column shows the percent Ramachandran outliers of the chain as a percentile score with respect to all X-ray entries followed by that with respect to entries of similar resolution.

The Analysed column shows the number of residues for which the backbone conformation was analysed, and the total number of residues.

Mol	Chain	Analysed	Favoured	Allowed	Outliers	Percentiles	
1	A	488/297 (164%)	474 (97%)	12 (2%)	2 (0%)	36	11
1	B	588/297 (198%)	578 (98%)	10 (2%)	0	100	100
All	All	1076/594 (181%)	1052 (98%)	22 (2%)	2 (0%)	49	18

All (2) Ramachandran outliers are listed below:

Mol	Chain	Res	Type
1	A	250[A]	ASP
1	A	250[B]	ASP

### 5.3.2 Protein sidechains ⓘ

In the following table, the Percentiles column shows the percent sidechain outliers of the chain as a percentile score with respect to all X-ray entries followed by that with respect to entries of similar resolution.

The Analysed column shows the number of residues for which the sidechain conformation was analysed, and the total number of residues.

Mol	Chain	Analysed	Rotameric	Outliers	Percentiles	
1	A	394/235 (168%)	389 (99%)	5 (1%)	71	33
1	B	463/235 (197%)	461 (100%)	2 (0%)	92	76
All	All	857/470 (182%)	850 (99%)	7 (1%)	81	51

All (7) residues with a non-rotameric sidechain are listed below:

Mol	Chain	Res	Type
1	A	4[A]	GLN
1	A	4[B]	GLN
1	A	19	ARG
1	A	261[A]	HIS
1	A	261[B]	HIS
1	B	19[A]	ARG
1	B	19[B]	ARG

Some sidechains can be flipped to improve hydrogen bonding and reduce clashes. There are no such sidechains identified.

### 5.3.3 RNA ⓘ

There are no RNA molecules in this entry.

## 5.4 Non-standard residues in protein, DNA, RNA chains [i](#)

There are no non-standard protein/DNA/RNA residues in this entry.

## 5.5 Carbohydrates [i](#)

There are no carbohydrates in this entry.

## 5.6 Ligand geometry [i](#)

Of 5 ligands modelled in this entry, 2 are monoatomic - leaving 3 for Mogul analysis.

In the following table, the Counts columns list the number of bonds (or angles) for which Mogul statistics could be retrieved, the number of bonds (or angles) that are observed in the model and the number of bonds (or angles) that are defined in the Chemical Component Dictionary. The Link column lists molecule types, if any, to which the group is linked. The Z score for a bond length (or angle) is the number of standard deviations the observed value is removed from the expected value. A bond length (or angle) with  $|Z| > 2$  is considered an outlier worth inspection. RMSZ is the root-mean-square of all Z scores of the bond lengths (or angles).

Mol	Type	Chain	Res	Link	Bond lengths			Bond angles		
					Counts	RMSZ	# Z  > 2	Counts	RMSZ	# Z  > 2
2	GCP	A	1298[A]	-	26,34,34	2.68	8 (30%)	31,54,54	0.95	2 (6%)
2	GCP	A	1298[B]	-	26,34,34	2.73	7 (26%)	31,54,54	1.05	3 (9%)
2	GCP	B	1297	-	26,34,34	2.81	5 (19%)	31,54,54	1.24	3 (9%)

In the following table, the Chirals column lists the number of chiral outliers, the number of chiral centers analysed, the number of these observed in the model and the number defined in the Chemical Component Dictionary. Similar counts are reported in the Torsion and Rings columns. '-' means no outliers of that kind were identified.

Mol	Type	Chain	Res	Link	Chirals	Torsions	Rings
2	GCP	A	1298[A]	-	-	2/18/38/38	0/3/3/3
2	GCP	A	1298[B]	-	-	6/18/38/38	0/3/3/3
2	GCP	B	1297	-	-	4/18/38/38	0/3/3/3

All (20) bond length outliers are listed below:

Mol	Chain	Res	Type	Atoms	Z	Observed(Å)	Ideal(Å)
2	B	1297	GCP	C4-N9	-12.70	1.30	1.47
2	A	1298[B]	GCP	C4-N9	-11.80	1.32	1.47
2	A	1298[A]	GCP	C4-N9	-11.54	1.32	1.47

*Continued on next page...*

*Continued from previous page...*

Mol	Chain	Res	Type	Atoms	Z	Observed(Å)	Ideal(Å)
2	A	1298[B]	GCP	PB-O3A	3.28	1.62	1.58
2	A	1298[A]	GCP	PB-O3A	3.22	1.62	1.58
2	A	1298[B]	GCP	PB-O2B	-2.73	1.49	1.56
2	A	1298[B]	GCP	PG-O2G	-2.63	1.48	1.54
2	B	1297	GCP	C5-C6	-2.61	1.48	1.52
2	A	1298[B]	GCP	C5-C6	-2.60	1.48	1.52
2	A	1298[A]	GCP	PB-O2B	-2.59	1.50	1.56
2	A	1298[A]	GCP	PG-O2G	-2.55	1.48	1.54
2	A	1298[B]	GCP	C8-N9	-2.50	1.36	1.45
2	A	1298[A]	GCP	C8-N9	-2.48	1.36	1.45
2	B	1297	GCP	PB-O3A	2.45	1.61	1.58
2	B	1297	GCP	C8-N9	-2.43	1.36	1.45
2	A	1298[A]	GCP	PG-O3G	-2.37	1.49	1.54
2	A	1298[A]	GCP	C5-C6	-2.26	1.48	1.52
2	B	1297	GCP	PB-O2B	-2.14	1.51	1.56
2	A	1298[A]	GCP	C2-N1	-2.04	1.36	1.44
2	A	1298[B]	GCP	C2-N1	-2.00	1.36	1.44

All (8) bond angle outliers are listed below:

Mol	Chain	Res	Type	Atoms	Z	Observed(°)	Ideal(°)
2	B	1297	GCP	C4-C5-N7	3.11	106.59	102.46
2	B	1297	GCP	O1G-PG-C3B	-2.92	104.82	111.24
2	A	1298[B]	GCP	C4-C5-N7	2.79	106.16	102.46
2	A	1298[A]	GCP	C4-C5-N7	2.53	105.81	102.46
2	A	1298[A]	GCP	O2B-PB-O1B	2.34	117.97	110.08
2	A	1298[B]	GCP	O2G-PG-O1G	-2.13	106.62	112.29
2	A	1298[B]	GCP	O2B-PB-O1B	2.03	116.92	110.08
2	B	1297	GCP	O3G-PG-O2G	2.02	114.07	108.18

There are no chirality outliers.

All (12) torsion outliers are listed below:

Mol	Chain	Res	Type	Atoms
2	A	1298[A]	GCP	C2'-C1'-N9-C4
2	B	1297	GCP	PB-C3B-PG-O1G
2	B	1297	GCP	C2'-C1'-N9-C4
2	A	1298[B]	GCP	PB-C3B-PG-O1G
2	A	1298[B]	GCP	PB-C3B-PG-O3G
2	A	1298[B]	GCP	C2'-C1'-N9-C8
2	A	1298[B]	GCP	C2'-C1'-N9-C4
2	A	1298[A]	GCP	PB-C3B-PG-O3G

*Continued on next page...*

*Continued from previous page...*

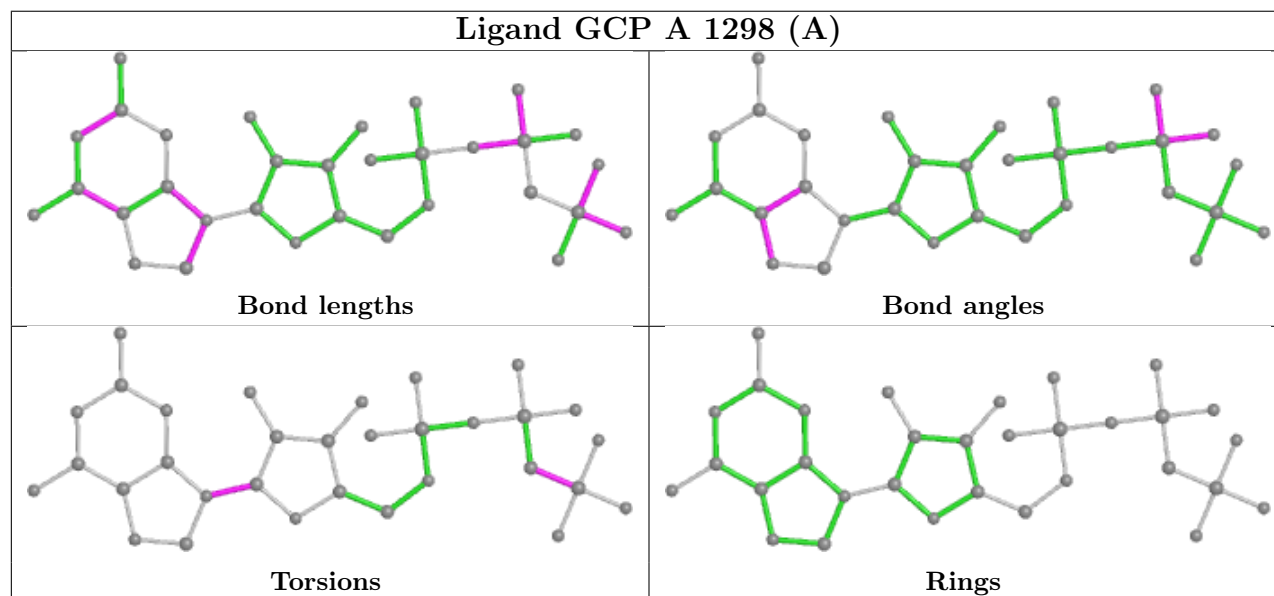
Mol	Chain	Res	Type	Atoms
2	B	1297	GCP	PB-C3B-PG-O2G
2	B	1297	GCP	PB-C3B-PG-O3G
2	A	1298[B]	GCP	PB-C3B-PG-O2G
2	A	1298[B]	GCP	PB-O3A-PA-O2A

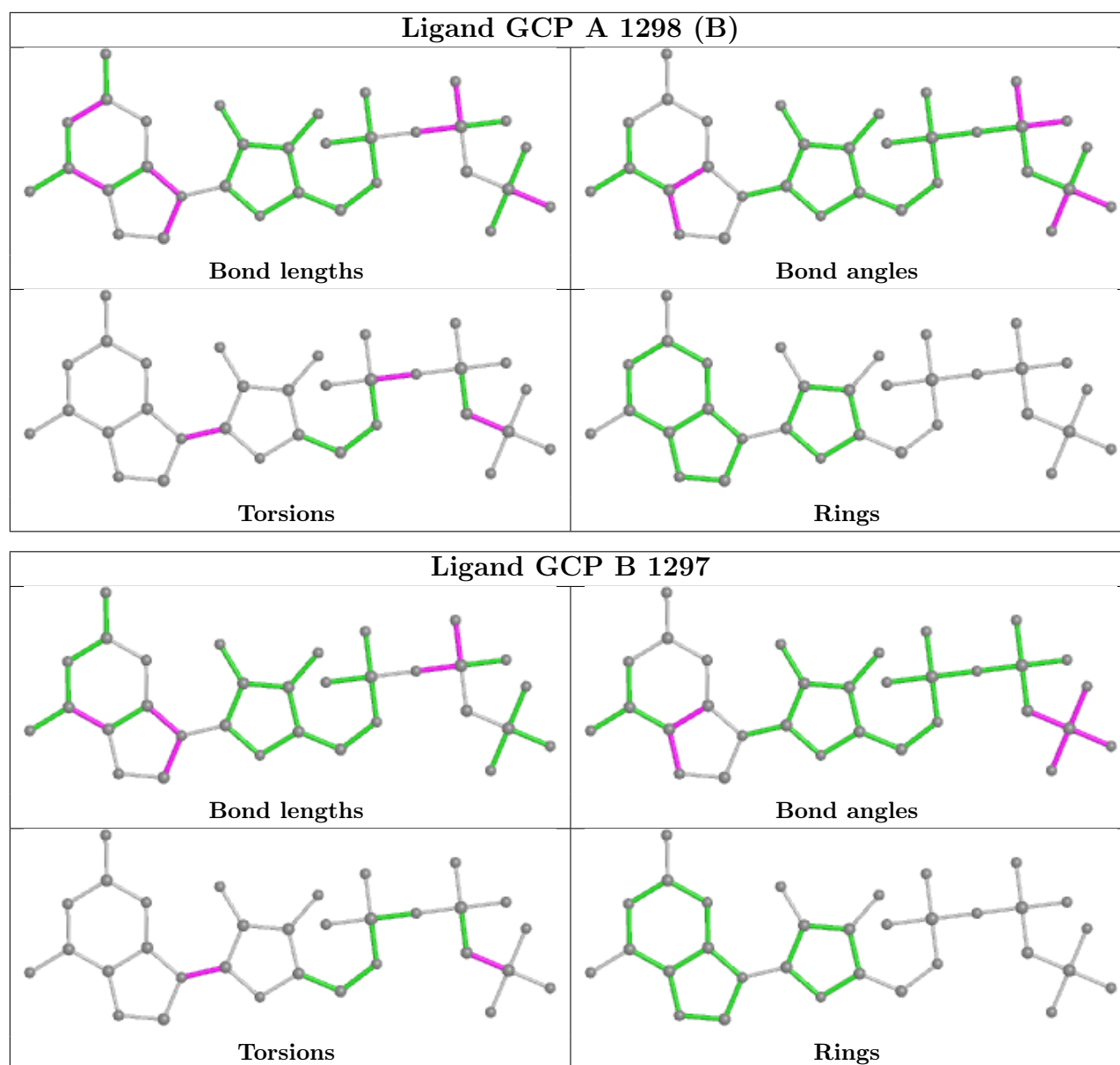
There are no ring outliers.

3 monomers are involved in 20 short contacts:

Mol	Chain	Res	Type	Clashes	Symm-Clashes
2	A	1298[A]	GCP	2	0
2	A	1298[B]	GCP	4	0
2	B	1297	GCP	14	0

The following is a two-dimensional graphical depiction of Mogul quality analysis of bond lengths, bond angles, torsion angles, and ring geometry for all instances of the Ligand of Interest. In addition, ligands with molecular weight > 250 and outliers as shown on the validation Tables will also be included. For torsion angles, if less than 5% of the Mogul distribution of torsion angles is within 10 degrees of the torsion angle in question, then that torsion angle is considered an outlier. Any bond that is central to one or more torsion angles identified as an outlier by Mogul will be highlighted in the graph. For rings, the root-mean-square deviation (RMSD) between the ring in question and similar rings identified by Mogul is calculated over all ring torsion angles. If the average RMSD is greater than 60 degrees and the minimal RMSD between the ring in question and any Mogul-identified rings is also greater than 60 degrees, then that ring is considered an outlier. The outliers are highlighted in purple. The color gray indicates Mogul did not find sufficient equivalents in the CSD to analyse the geometry.





## 5.7 Other polymers [i](#)

There are no such residues in this entry.

## 5.8 Polymer linkage issues [i](#)

The following chains have linkage breaks:

Mol	Chain	Number of breaks
1	A	2
1	B	1



All chain breaks are listed below:

Model	Chain	Residue-1	Atom-1	Residue-2	Atom-2	Distance (Å)
1	A	143[A]:GLU	C	144[A]:GLN	N	1.87
1	A	143[B]:GLU	C	144[B]:GLN	N	0.81
1	B	295[B]:GLY	C	296:ASP	N	0.69

## 6 Fit of model and data

### 6.1 Protein, DNA and RNA chains

In the following table, the column labelled ‘#RSRZ > 2’ contains the number (and percentage) of RSRZ outliers, followed by percent RSRZ outliers for the chain as percentile scores relative to all X-ray entries and entries of similar resolution. The OWAB column contains the minimum, median, 95<sup>th</sup> percentile and maximum values of the occupancy-weighted average B-factor per residue. The column labelled ‘Q < 0.9’ lists the number of (and percentage) of residues with an average occupancy less than 0.9.

Mol	Chain	Analysed	<RSRZ>	#RSRZ>2		OWAB(Å <sup>2</sup> )	Q<0.9
1	A	297/297 (100%)	0.54	21 (7%)	16 16	11, 17, 29, 35	1 (0%)
1	B	296/297 (99%)	0.65	39 (13%)	3 4	10, 17, 30, 36	6 (2%)
All	All	593/594 (99%)	0.60	60 (10%)	7 8	10, 17, 29, 36	7 (1%)

All (60) RSRZ outliers are listed below:

Mol	Chain	Res	Type	RSRZ
1	A	297[A]	VAL	6.5
1	A	250[A]	ASP	6.2
1	B	94[A]	VAL	5.7
1	A	275[A]	LYS	4.4
1	B	18[A]	GLY	4.4
1	B	178[A]	LEU	4.3
1	A	97[A]	ASP	4.3
1	B	251[A]	ALA	4.1
1	B	296	ASP	4.0
1	B	17[A]	ARG	4.0
1	B	276[A]	PRO	3.8
1	B	295[A]	GLY	3.7
1	A	276[A]	PRO	3.6
1	B	4[A]	GLN	3.6
1	B	65[A]	LEU	3.5
1	B	275[A]	LYS	3.5
1	B	3[A]	GLN	3.5
1	A	98[A]	ARG	3.5
1	A	251[A]	ALA	3.4
1	B	273[A]	SER	3.3
1	B	23[A]	THR	3.3
1	A	277[A]	GLU	3.1
1	B	274[A]	GLU	3.1
1	B	19[A]	ARG	3.1

*Continued on next page...*

*Continued from previous page...*

Mol	Chain	Res	Type	RSRZ
1	B	22[A]	ILE	3.0
1	B	25[A]	GLU	2.9
1	B	124[A]	GLY	2.9
1	A	118[A]	LEU	2.8
1	A	94[A]	VAL	2.8
1	B	195[A]	ASP	2.7
1	B	7[A]	ALA	2.7
1	A	274[A]	GLU	2.6
1	B	66[A]	GLU	2.6
1	B	36[A]	ARG	2.6
1	B	98[A]	ARG	2.6
1	B	68[A]	LEU	2.6
1	B	21[A]	ARG	2.5
1	B	252[A]	ARG	2.5
1	A	42[A]	ASP	2.5
1	B	14[A]	GLY	2.5
1	B	89[A]	GLU	2.5
1	A	3[A]	GLN	2.4
1	B	63[A]	GLN	2.4
1	A	224[A]	GLN	2.4
1	B	24[A]	GLU	2.3
1	B	26[A]	ASP	2.2
1	A	252[A]	ARG	2.2
1	B	137[A]	GLN	2.2
1	B	194[A]	ILE	2.2
1	B	294[A]	MET	2.2
1	A	227[A]	LEU	2.2
1	A	261[A]	HIS	2.2
1	A	52[A]	VAL	2.1
1	A	192[A]	LEU	2.1
1	A	74	ILE	2.1
1	B	186[A]	VAL	2.1
1	B	196[A]	GLU	2.1
1	B	131[A]	LEU	2.0
1	A	78	VAL	2.0
1	B	243[A]	VAL	2.0

## 6.2 Non-standard residues in protein, DNA, RNA chains ⓘ

There are no non-standard protein/DNA/RNA residues in this entry.

## 6.3 Carbohydrates [i](#)

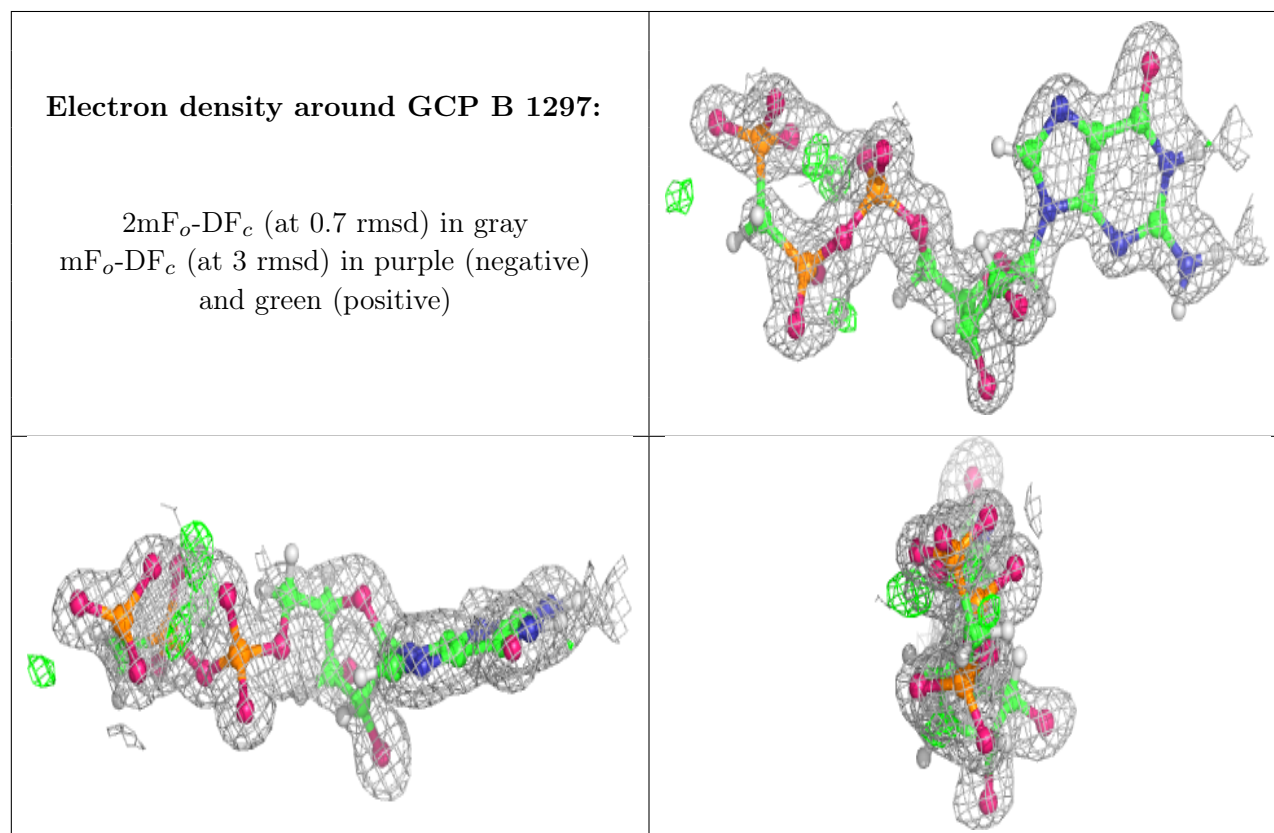
There are no carbohydrates in this entry.

## 6.4 Ligands [i](#)

In the following table, the Atoms column lists the number of modelled atoms in the group and the number defined in the chemical component dictionary. The B-factors column lists the minimum, median, 95<sup>th</sup> percentile and maximum values of B factors of atoms in the group. The column labelled 'Q< 0.9' lists the number of atoms with occupancy less than 0.9.

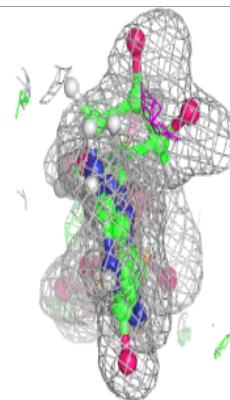
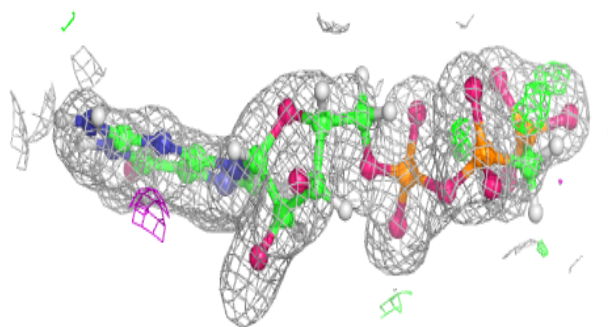
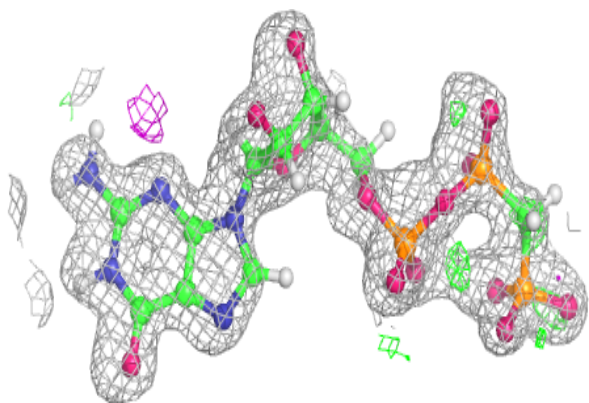
Mol	Type	Chain	Res	Atoms	RSCC	RSR	B-factors(Å <sup>2</sup> )	Q<0.9
2	GCP	B	1297	32/32	0.95	0.07	17,20,23,26	44
2	GCP	A	1298[A]	32/32	0.96	0.09	14,19,25,27	44
2	GCP	A	1298[B]	32/32	0.96	0.09	12,18,21,23	44
3	CA	A	1300	1/1	0.99	0.09	20,20,20,20	1
3	CA	A	1299	1/1	1.00	0.02	13,13,13,13	0

The following is a graphical depiction of the model fit to experimental electron density of all instances of the Ligand of Interest. In addition, ligands with molecular weight > 250 and outliers as shown on the geometry validation Tables will also be included. Each fit is shown from different orientation to approximate a three-dimensional view.

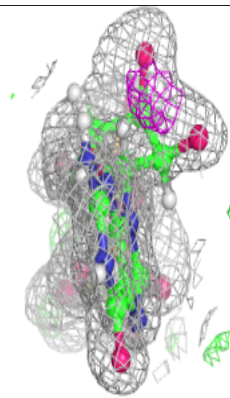
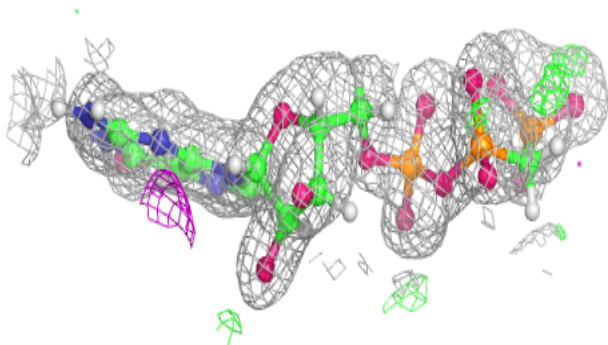
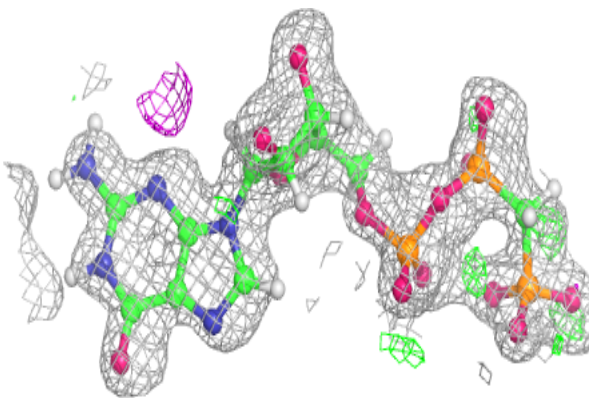


**Electron density around GCP A 1298 (A):**

$2mF_o-DF_c$  (at 0.7 rmsd) in gray  
 $mF_o-DF_c$  (at 3 rmsd) in purple (negative)  
and green (positive)

**Electron density around GCP A 1298 (B):**

$2mF_o-DF_c$  (at 0.7 rmsd) in gray  
 $mF_o-DF_c$  (at 3 rmsd) in purple (negative)  
and green (positive)



## 6.5 Other polymers [i](#)

There are no such residues in this entry.