



Full wwPDB X-ray Structure Validation Report ⓘ

Mar 9, 2018 – 06:28 pm GMT

PDB ID : 2C0U
Title : Crystal Structure of a Covalent Complex of Nitroalkane Oxidase Trapped During Substrate Turnover
Authors : Nagpal, A.; Valley, M.P.; Fitzpatrick, P.F.; Orville, A.M.
Deposited on : 2005-09-07
Resolution : 2.20 Å(reported)

This is a Full wwPDB X-ray Structure Validation Report for a publicly released PDB entry.

We welcome your comments at validation@mail.wwpdb.org

A user guide is available at

<https://www.wwpdb.org/validation/2017/XrayValidationReportHelp>

with specific help available everywhere you see the ⓘ symbol.

The following versions of software and data (see [references ⓘ](#)) were used in the production of this report:

MolProbity : 4.02b-467
Mogul : 1.7.3 (157068), CSD as539be (2018)
Xtriage (Phenix) : 1.13
EDS : trunk30967
Percentile statistics : 20171227.v01 (using entries in the PDB archive December 27th 2017)
Refmac : 5.8.0158
CCP4 : 7.0 (Gargrove)
Ideal geometry (proteins) : Engh & Huber (2001)
Ideal geometry (DNA, RNA) : Parkinson et al. (1996)
Validation Pipeline (wwPDB-VP) : trunk30967

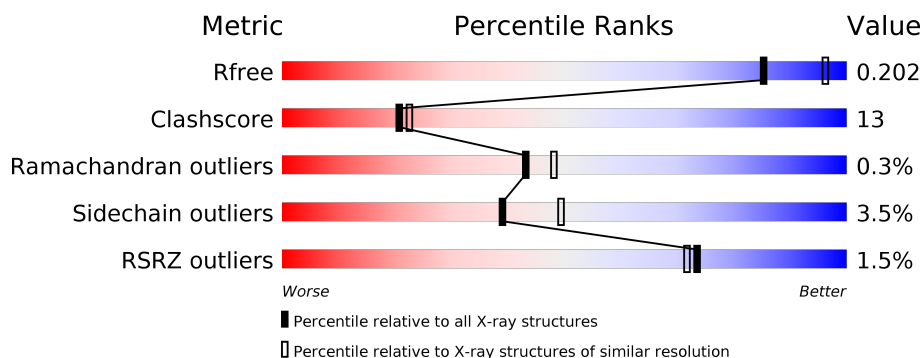
1 Overall quality at a glance

The following experimental techniques were used to determine the structure:

X-RAY DIFFRACTION

The reported resolution of this entry is 2.20 Å.

Percentile scores (ranging between 0-100) for global validation metrics of the entry are shown in the following graphic. The table shows the number of entries on which the scores are based.



Metric	Whole archive (#Entries)	Similar resolution (#Entries, resolution range(Å))
R_{free}	111664	4343 (2.20-2.20)
Clashscore	122126	5027 (2.20-2.20)
Ramachandran outliers	120053	4952 (2.20-2.20)
Sidechain outliers	120020	4953 (2.20-2.20)
RSRZ outliers	108989	4245 (2.20-2.20)

The table below summarises the geometric issues observed across the polymeric chains and their fit to the electron density. The red, orange, yellow and green segments on the lower bar indicate the fraction of residues that contain outliers for ≥ 3 , 2, 1 and 0 types of geometric quality criteria. A grey segment represents the fraction of residues that are not modelled. The numeric value for each fraction is indicated below the corresponding segment, with a dot representing fractions $\leq 5\%$. The upper red bar (where present) indicates the fraction of residues that have poor fit to the electron density. The numeric value is given above the bar.

Mol	Chain	Length	Quality of chain
1	A	439	<div> <div style="width: 100%; height: 10px; background: linear-gradient(to right, red 1%, orange 1%, yellow 22%, green 73%, grey 4%);"></div> <div style="display: flex; justify-content: space-between; width: 100%;"> 73% 22% </div> </div>
1	B	439	<div> <div style="width: 100%; height: 10px; background: linear-gradient(to right, red 2%, orange 2%, yellow 23%, green 72%, grey 3%);"></div> <div style="display: flex; justify-content: space-between; width: 100%;"> 72% 23% </div> </div>
1	C	439	<div> <div style="width: 100%; height: 10px; background: linear-gradient(to right, red 1%, orange 1%, yellow 22%, green 74%, grey 4%);"></div> <div style="display: flex; justify-content: space-between; width: 100%;"> 74% 22% </div> </div>
1	D	439	<div> <div style="width: 100%; height: 10px; background: linear-gradient(to right, red 2%, orange 2%, yellow 24%, green 72%, grey 3%);"></div> <div style="display: flex; justify-content: space-between; width: 100%;"> 72% 24% </div> </div>

The following table lists non-polymeric compounds, carbohydrate monomers and non-standard residues in protein, DNA, RNA chains that are outliers for geometric or electron-density-fit crite-

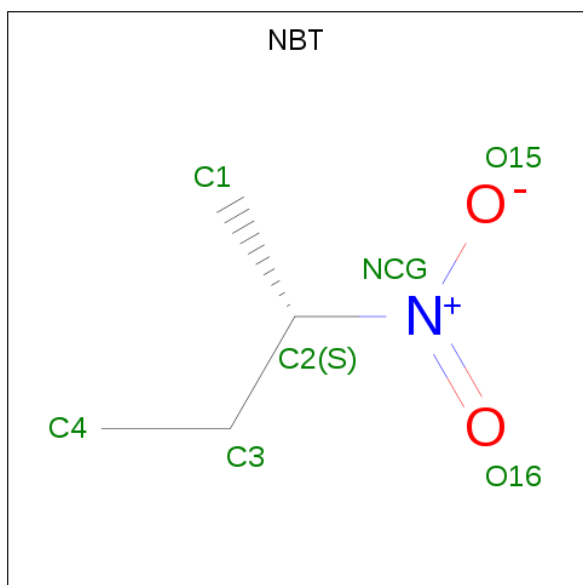
ria:

Mol	Type	Chain	Res	Chirality	Geometry	Clashes	Electron density
3	NBT	A	1433	-	-	X	-
3	NBT	B	1433	-	-	X	X
3	NBT	C	1433	-	-	X	-
3	NBT	D	1433	-	-	X	-

Continued from previous page...

Mol	Chain	Residues	Atoms					ZeroOcc	AltConf
2	C	1	Total	C	N	O	P	0	0
			53	27	9	15	2		
2	D	1	Total	C	N	O	P	0	0
			53	27	9	15	2		

- Molecule 3 is (2S)-2-NITROBUTANE (three-letter code: NBT) (formula: $C_4H_9NO_2$).



Mol	Chain	Residues	Atoms				ZeroOcc	AltConf
3	A	1	Total	C	N	O	0	0
			7	4	1	2		
3	B	1	Total	C	N	O	0	0
			7	4	1	2		
3	C	1	Total	C	N	O	0	0
			7	4	1	2		
3	D	1	Total	C	N	O	0	0
			7	4	1	2		

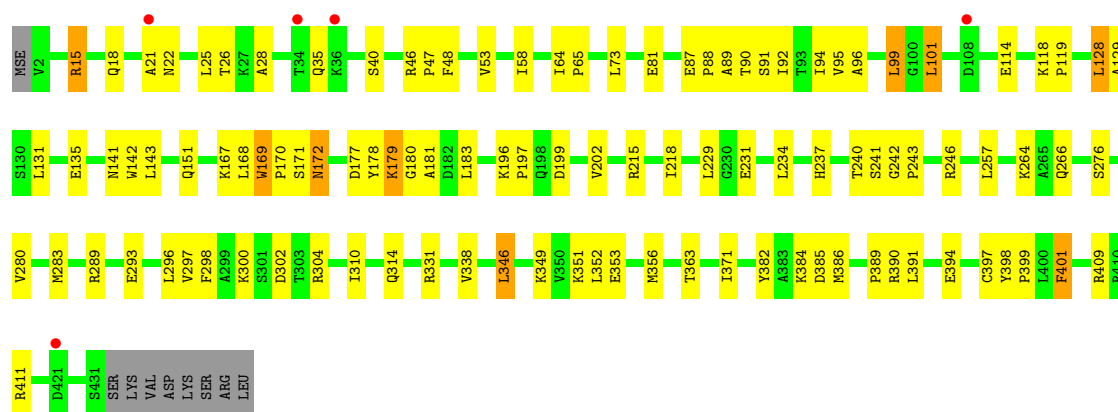
- Molecule 4 is water.

Mol	Chain	Residues	Atoms		ZeroOcc	AltConf
4	A	171	Total	O	0	0
			171	171		
4	B	175	Total	O	0	0
			175	175		
4	C	204	Total	O	0	0
			204	204		

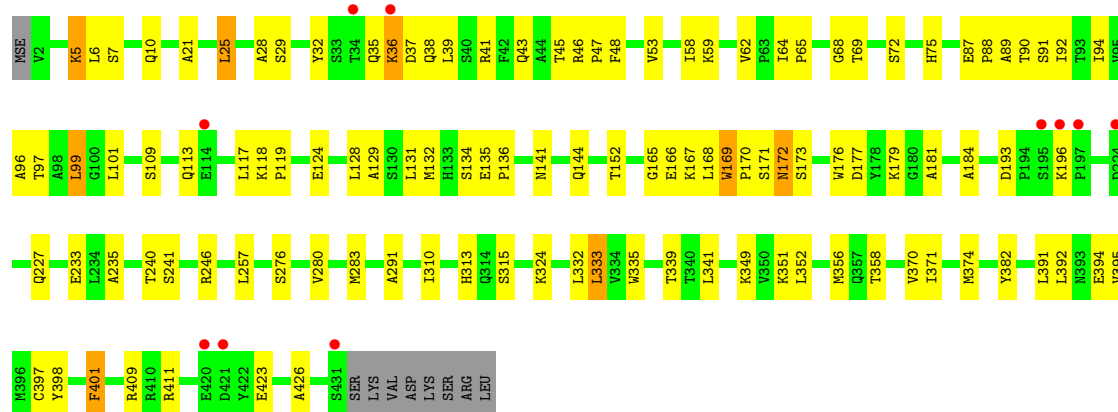
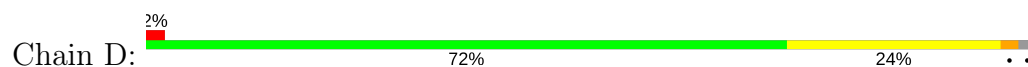
Continued on next page...

Continued from previous page...

Mol	Chain	Residues	Atoms		ZeroOcc	AltConf
4	D	142	Total	O	0	0
			142	142		



● Molecule 1: NITROALKANE OXIDASE



4 Data and refinement statistics

Property	Value	Source
Space group	P 21 21 21	Depositor
Cell constants a, b, c, α , β , γ	90.39Å 163.74Å 173.41Å 90.00° 90.00° 90.00°	Depositor
Resolution (Å)	40.00 – 2.20 39.84 – 2.20	Depositor EDS
% Data completeness (in resolution range)	99.8 (40.00-2.20) 99.8 (39.84-2.20)	Depositor EDS
R_{merge}	0.11	Depositor
R_{sym}	(Not available)	Depositor
$\langle I/\sigma(I) \rangle$ ¹	2.38 (at 2.20Å)	Xtriage
Refinement program	CNS 1.1	Depositor
R, R_{free}	0.201 , 0.232 0.199 , 0.202	Depositor DCC
R_{free} test set	6564 reflections (5.02%)	wwPDB-VP
Wilson B-factor (Å ²)	30.9	Xtriage
Anisotropy	0.287	Xtriage
Bulk solvent k_{sol} (e/Å ³), B_{sol} (Å ²)	0.33 , 41.1	EDS
L-test for twinning ²	$\langle L \rangle = 0.48$, $\langle L^2 \rangle = 0.31$	Xtriage
Estimated twinning fraction	No twinning to report.	Xtriage
F_o, F_c correlation	0.95	EDS
Total number of atoms	14160	wwPDB-VP
Average B, all atoms (Å ²)	34.0	wwPDB-VP

Xtriage's analysis on translational NCS is as follows: *The largest off-origin peak in the Patterson function is 3.60% of the height of the origin peak. No significant pseudotranslation is detected.*

¹Intensities estimated from amplitudes.

²Theoretical values of $\langle |L| \rangle$, $\langle L^2 \rangle$ for acentric reflections are 0.5, 0.333 respectively for untwinned datasets, and 0.375, 0.2 for perfectly twinned datasets.

5 Model quality [i](#)

5.1 Standard geometry [i](#)

Bond lengths and bond angles in the following residue types are not validated in this section: FAD, NBT

The Z score for a bond length (or angle) is the number of standard deviations the observed value is removed from the expected value. A bond length (or angle) with $|Z| > 5$ is considered an outlier worth inspection. RMSZ is the root-mean-square of all Z scores of the bond lengths (or angles).

Mol	Chain	Bond lengths		Bond angles	
		RMSZ	$\# Z > 5$	RMSZ	$\# Z > 5$
1	A	0.36	0/3363	0.54	0/4542
1	B	0.36	0/3363	0.55	0/4542
1	C	0.38	0/3363	0.56	0/4542
1	D	0.33	0/3363	0.51	0/4542
All	All	0.36	0/13452	0.54	0/18168

There are no bond length outliers.

There are no bond angle outliers.

There are no chirality outliers.

There are no planarity outliers.

5.2 Too-close contacts [i](#)

In the following table, the Non-H and H(model) columns list the number of non-hydrogen atoms and hydrogen atoms in the chain respectively. The H(added) column lists the number of hydrogen atoms added and optimized by MolProbity. The Clashes column lists the number of clashes within the asymmetric unit, whereas Symm-Clashes lists symmetry related clashes.

Mol	Chain	Non-H	H(model)	H(added)	Clashes	Symm-Clashes
1	A	3307	0	3319	94	0
1	B	3307	0	3319	89	0
1	C	3307	0	3319	94	0
1	D	3307	0	3319	86	0
2	A	53	0	31	6	0
2	B	53	0	31	9	0
2	C	53	0	31	7	0
2	D	53	0	31	5	0
3	A	7	0	8	5	0

Continued on next page...

Continued from previous page...

Mol	Chain	Non-H	H(model)	H(added)	Clashes	Symm-Clashes
3	B	7	0	8	4	0
3	C	7	0	8	4	0
3	D	7	0	8	4	0
4	A	171	0	0	8	0
4	B	175	0	0	9	0
4	C	204	0	0	7	0
4	D	142	0	0	0	0
All	All	14160	0	13432	356	0

The all-atom clashscore is defined as the number of clashes found per 1000 atoms (including hydrogen atoms). The all-atom clashscore for this structure is 13.

All (356) close contacts within the same asymmetric unit are listed below, sorted by their clash magnitude.

Atom-1	Atom-2	Interatomic distance (Å)	Clash overlap (Å)
1:D:5:LYS:HE3	1:D:6:LEU:H	1.33	0.94
1:B:141:ASN:HD21	2:B:1432:FAD:H61A	1.17	0.89
1:B:102:MSE:HG3	4:B:2121:HOH:O	1.72	0.87
1:D:36:LYS:HZ2	1:D:36:LYS:H	1.19	0.86
1:B:92:ILE:HG21	1:B:240:THR:HG22	1.58	0.85
1:A:379:MSE:HG3	2:B:1432:FAD:H4'	1.63	0.80
1:C:99:LEU:HD22	1:C:131:LEU:HD12	1.65	0.78
1:A:53:VAL:HG22	1:A:58:ILE:HG13	1.65	0.78
1:A:92:ILE:HG21	1:A:240:THR:HG22	1.66	0.78
1:A:132:MSE:HE2	1:A:173:SER:HB2	1.65	0.77
1:C:177:ASP:OD1	1:C:179:LYS:HG2	1.83	0.76
1:C:21:ALA:HB3	4:C:2007:HOH:O	1.83	0.76
1:C:280:VAL:HA	1:C:283:MSE:HE3	1.68	0.76
1:A:73:LEU:HB3	1:A:338:VAL:HB	1.65	0.76
1:D:92:ILE:HG21	1:D:240:THR:HG22	1.67	0.76
1:C:171:SER:OG	3:C:1433:NBT:H1C2	1.85	0.75
1:D:36:LYS:H	1:D:36:LYS:NZ	1.84	0.75
1:A:199:ASP:HB3	1:A:202:VAL:HG12	1.70	0.73
1:C:141:ASN:HD21	2:C:1432:FAD:H61A	1.37	0.73
1:C:21:ALA:HB2	1:C:25:LEU:HD12	1.70	0.73
1:A:132:MSE:HE1	4:A:2089:HOH:O	1.89	0.73
1:A:171:SER:OG	3:A:1433:NBT:H1C2	1.88	0.72
1:A:179:LYS:HB2	1:A:215:ARG:HH21	1.54	0.72
1:A:141:ASN:HD21	2:A:1432:FAD:H61A	1.38	0.72
1:A:99:LEU:HD22	1:A:131:LEU:HD12	1.73	0.71
1:B:171:SER:OG	3:B:1433:NBT:H1C2	1.89	0.71

Continued on next page...

Continued from previous page...

Atom-1	Atom-2	Interatomic distance (Å)	Clash overlap (Å)
1:A:397:CYS:HB2	1:B:382:TYR:CZ	2.24	0.71
1:A:132:MSE:HE3	1:A:184:ALA:CB	2.20	0.70
1:D:72:SER:HB3	1:D:75:HIS:ND1	2.07	0.70
1:D:132:MSE:HE3	1:D:184:ALA:CB	2.22	0.70
1:C:179:LYS:HD2	1:C:215:ARG:NH2	2.07	0.69
1:D:5:LYS:HE3	1:D:6:LEU:N	2.06	0.69
1:D:132:MSE:HE2	1:D:173:SER:HB2	1.74	0.68
1:A:141:ASN:ND2	2:A:1432:FAD:H61A	1.93	0.67
1:C:169:TRP:HB3	2:C:1432:FAD:H1'2	1.77	0.67
1:A:141:ASN:HB3	1:A:144:GLN:HE21	1.60	0.67
1:A:314:GLN:HE21	1:D:315:SER:H	1.43	0.67
1:A:124:GLU:HB3	4:A:2045:HOH:O	1.95	0.66
1:C:397:CYS:HB2	1:D:382:TYR:CZ	2.30	0.66
1:A:132:MSE:HE3	1:A:184:ALA:HB1	1.77	0.66
1:A:379:MSE:HE3	1:B:400:LEU:HB2	1.77	0.66
1:D:280:VAL:HA	1:D:283:MSE:HE3	1.78	0.65
1:C:382:TYR:CZ	1:D:397:CYS:HB2	2.30	0.65
1:D:53:VAL:HG22	1:D:58:ILE:HG13	1.79	0.65
1:D:132:MSE:HE3	1:D:184:ALA:HB1	1.79	0.65
1:B:63:PRO:HG2	1:B:66:LEU:HD13	1.79	0.64
1:B:46:ARG:HB3	1:B:47:PRO:HD3	1.79	0.64
1:B:353:GLU:O	1:B:357:GLN:HG3	1.98	0.63
1:A:304:ARG:HG2	2:B:1432:FAD:O5B	1.98	0.63
1:B:280:VAL:HG21	1:B:359:LYS:HG2	1.80	0.63
1:B:169:TRP:HB3	2:B:1432:FAD:H1'2	1.81	0.62
1:B:333:LEU:HD13	1:B:358:THR:HA	1.79	0.62
1:D:7:SER:H	1:D:10:GLN:NE2	1.97	0.62
1:C:168:LEU:C	1:C:170:PRO:HD3	2.20	0.61
1:A:379:MSE:HA	1:A:379:MSE:CE	2.30	0.61
1:A:171:SER:HG	3:A:1433:NBT:H1C2	1.65	0.60
1:B:168:LEU:O	1:B:170:PRO:HD3	2.01	0.60
1:D:333:LEU:HD13	1:D:358:THR:HA	1.82	0.60
1:B:49:TYR:HD2	1:B:126:GLU:HB2	1.67	0.60
1:B:141:ASN:ND2	2:B:1432:FAD:H61A	1.93	0.60
1:C:141:ASN:ND2	2:C:1432:FAD:H61A	1.99	0.60
1:C:302:ASP:OD2	1:C:304:ARG:HD2	2.01	0.60
1:A:132:MSE:HE2	1:A:173:SER:CB	2.31	0.60
1:A:382:TYR:CZ	1:B:397:CYS:HB2	2.37	0.60
1:A:379:MSE:HE3	1:B:400:LEU:CB	2.32	0.60
1:D:168:LEU:C	1:D:170:PRO:HD3	2.21	0.59
1:D:64:ILE:HB	1:D:65:PRO:HD3	1.84	0.59

Continued on next page...

Continued from previous page...

Atom-1	Atom-2	Interatomic distance (Å)	Clash overlap (Å)
1:A:326:ARG:HD3	1:A:365:VAL:HG22	1.85	0.59
1:C:352:LEU:O	1:C:356:MSE:HG2	2.02	0.59
1:D:169:TRP:HB3	2:D:1432:FAD:H1'2	1.83	0.59
1:A:202:VAL:HG13	4:A:2076:HOH:O	2.02	0.58
1:A:224:ASP:HB3	4:A:2087:HOH:O	2.03	0.58
2:A:1432:FAD:H6	3:A:1433:NBT:H2	1.85	0.58
1:B:199:ASP:HB3	1:B:202:VAL:HG12	1.86	0.58
1:C:21:ALA:N	4:C:2007:HOH:O	2.37	0.58
1:B:260:THR:H	1:B:264:LYS:HZ1	1.52	0.58
2:D:1432:FAD:H6	3:D:1433:NBT:H2	1.86	0.57
1:C:21:ALA:CB	1:C:25:LEU:HD12	2.35	0.57
1:C:168:LEU:O	1:C:170:PRO:HD3	2.04	0.57
1:C:356:MSE:SE	1:C:409:ARG:HD2	2.55	0.57
1:A:199:ASP:HB3	1:A:202:VAL:CG1	2.34	0.57
1:B:277:ALA:O	1:B:280:VAL:HG22	2.05	0.57
2:B:1432:FAD:H6	3:B:1433:NBT:H2	1.86	0.57
1:D:168:LEU:O	1:D:169:TRP:HB2	2.05	0.57
1:B:202:VAL:HG13	4:B:2080:HOH:O	2.05	0.56
1:A:168:LEU:C	1:A:170:PRO:HD3	2.26	0.56
1:A:84:PHE:CE2	1:A:283:MSE:HE3	2.40	0.56
1:B:170:PRO:HD2	4:B:2071:HOH:O	2.06	0.56
1:A:314:GLN:NE2	1:D:315:SER:H	2.02	0.56
1:C:15:ARG:HB3	1:C:15:ARG:HH11	1.70	0.56
1:A:407:GLY:O	1:A:411:ARG:HG3	2.05	0.56
1:C:171:SER:HA	1:C:241:SER:O	2.05	0.56
1:A:171:SER:HA	1:A:241:SER:O	2.06	0.56
1:A:21:ALA:HA	1:A:25:LEU:HB2	1.88	0.55
1:B:328:GLU:HG3	4:B:2140:HOH:O	2.05	0.55
1:B:171:SER:HA	1:B:241:SER:O	2.07	0.55
1:B:425:TRP:CZ3	1:D:324:LYS:HE2	2.42	0.55
1:B:64:ILE:HB	1:B:65:PRO:HD3	1.89	0.55
1:A:352:LEU:O	1:A:356:MSE:HG2	2.06	0.55
1:A:379:MSE:HE2	1:A:379:MSE:HA	1.89	0.55
1:C:229:LEU:HD21	1:C:246:ARG:HB2	1.88	0.54
1:D:28:ALA:HA	1:D:48:PHE:CZ	2.42	0.54
1:B:194:PRO:HG3	4:B:2078:HOH:O	2.08	0.54
1:A:179:LYS:HB2	1:A:215:ARG:NH2	2.23	0.54
1:A:35:GLN:HE21	1:A:40:SER:HB3	1.73	0.54
1:C:53:VAL:HG22	1:C:58:ILE:HG13	1.90	0.54
1:A:169:TRP:HB3	2:A:1432:FAD:H1'2	1.90	0.54
1:D:171:SER:OG	3:D:1433:NBT:H1C2	2.08	0.54

Continued on next page...

Continued from previous page...

Atom-1	Atom-2	Interatomic distance (Å)	Clash overlap (Å)
1:C:199:ASP:O	1:C:202:VAL:HG22	2.09	0.53
1:D:35:GLN:HB2	1:D:41:ARG:HG2	1.90	0.53
1:C:384:LYS:HE3	1:D:235:ALA:HA	1.89	0.53
1:B:168:LEU:C	1:B:170:PRO:HD3	2.29	0.53
1:A:349:LYS:HG2	4:A:2136:HOH:O	2.08	0.53
1:B:228:ILE:HG23	1:B:243:PRO:HB2	1.91	0.53
1:D:62:VAL:O	1:D:68:GLY:HA3	2.09	0.53
1:A:152:THR:HA	1:A:165:GLY:HA3	1.90	0.53
1:B:168:LEU:O	1:B:169:TRP:HB2	2.09	0.53
1:B:280:VAL:CG2	1:B:359:LYS:HG2	2.39	0.53
1:A:61:GLN:HE21	1:A:98:ALA:HB2	1.74	0.52
2:C:1432:FAD:H6	3:C:1433:NBT:H2	1.90	0.52
1:C:168:LEU:O	1:C:169:TRP:HB2	2.10	0.52
1:A:228:ILE:HG23	1:A:243:PRO:HB3	1.90	0.52
1:B:84:PHE:CZ	1:B:283:MSE:HE3	2.44	0.52
1:C:240:THR:HG23	4:C:2121:HOH:O	2.09	0.52
1:D:177:ASP:OD1	1:D:179:LYS:HB2	2.10	0.52
1:D:59:LYS:HE2	1:D:69:THR:HG23	1.91	0.51
1:B:405:ASN:O	1:B:410:ARG:HG3	2.10	0.51
1:C:237:HIS:O	1:C:240:THR:HG22	2.10	0.51
1:C:92:ILE:O	1:C:95:VAL:HG22	2.11	0.51
1:A:293:GLU:O	1:A:297:VAL:HG23	2.10	0.51
1:A:393:ASN:HD21	1:B:393:ASN:HD21	1.57	0.51
1:D:113:GLN:O	1:D:117:LEU:HB2	2.11	0.51
1:C:229:LEU:HD21	1:C:246:ARG:CB	2.41	0.51
1:C:96:ALA:HB1	1:C:171:SER:HB2	1.93	0.51
1:C:46:ARG:HB3	1:C:47:PRO:HD3	1.91	0.51
2:A:1432:FAD:C6	3:A:1433:NBT:H2	2.41	0.51
1:A:289:ARG:O	1:A:293:GLU:HG3	2.11	0.51
1:D:118:LYS:N	1:D:119:PRO:HD2	2.26	0.51
2:B:1432:FAD:C6	3:B:1433:NBT:H2	2.41	0.50
1:C:21:ALA:O	1:C:26:THR:HG23	2.11	0.50
1:B:41:ARG:O	1:B:45:THR:HG23	2.11	0.50
1:C:179:LYS:HD2	1:C:215:ARG:HH22	1.74	0.50
1:D:135:GLU:HB3	1:D:136:PRO:HD2	1.94	0.50
1:B:59:LYS:HG2	1:B:121:ILE:HA	1.94	0.50
1:C:293:GLU:O	1:C:297:VAL:HG23	2.11	0.50
1:D:166:GLU:OE2	1:D:246:ARG:HD3	2.10	0.50
1:A:132:MSE:HE2	1:A:173:SER:CA	2.41	0.50
1:A:46:ARG:HB3	1:A:47:PRO:HD3	1.93	0.50
1:D:96:ALA:HB3	1:D:172:ASN:HD21	1.75	0.50

Continued on next page...

Continued from previous page...

Atom-1	Atom-2	Interatomic distance (Å)	Clash overlap (Å)
1:C:229:LEU:HD22	1:C:229:LEU:N	2.27	0.50
1:D:291:ALA:HB2	1:D:391:LEU:HD23	1.94	0.49
1:A:132:MSE:HE3	1:A:184:ALA:HB2	1.92	0.49
1:D:371:ILE:HA	1:D:374:MSE:HE2	1.93	0.49
1:C:73:LEU:CB	1:C:338:VAL:HB	2.43	0.49
1:D:46:ARG:HB3	1:D:47:PRO:HD3	1.93	0.49
1:C:363:THR:HG22	1:C:398:TYR:HB3	1.95	0.49
1:D:134:SER:OG	2:D:1432:FAD:H1'1	2.13	0.49
1:D:423:GLU:HB3	1:D:426:ALA:HB2	1.93	0.49
1:D:398:TYR:HA	1:D:401:PHE:CE2	2.47	0.49
1:B:152:THR:HA	1:B:165:GLY:HA3	1.95	0.49
1:A:168:LEU:O	1:A:169:TRP:HB2	2.13	0.49
1:B:88:PRO:HG2	1:B:394:GLU:CD	2.33	0.49
1:C:296:LEU:O	1:C:300:LYS:HG3	2.13	0.49
1:B:171:SER:CB	3:B:1433:NBT:H1C2	2.42	0.49
1:B:169:TRP:HB3	2:B:1432:FAD:C1'	2.43	0.48
1:B:352:LEU:O	1:B:356:MSE:HG2	2.12	0.48
1:C:178:TYR:OH	1:C:231:GLU:HB2	2.13	0.48
2:D:1432:FAD:C6	3:D:1433:NBT:H2	2.43	0.48
1:A:132:MSE:CE	1:A:173:SER:HB2	2.41	0.48
1:B:39:LEU:HD22	1:B:178:TYR:CE2	2.48	0.48
1:D:135:GLU:HG2	1:D:167:LYS:HD3	1.96	0.48
1:B:108:ASP:O	1:B:110:PRO:HD3	2.14	0.48
1:B:326:ARG:HG2	1:B:365:VAL:HG22	1.94	0.48
1:C:229:LEU:HD22	1:C:229:LEU:H	1.79	0.48
1:B:401:PHE:CD2	1:B:401:PHE:C	2.85	0.48
1:D:168:LEU:O	1:D:169:TRP:CB	2.62	0.48
1:D:193:ASP:OD2	1:D:196:LYS:HG3	2.13	0.48
1:C:101:LEU:HD13	1:C:129:ALA:CB	2.44	0.47
1:A:401:PHE:CD2	1:A:401:PHE:C	2.85	0.47
1:A:150:LEU:HB2	1:A:189:ARG:HB2	1.96	0.47
1:B:172:ASN:HB2	4:B:2073:HOH:O	2.14	0.47
1:D:170:PRO:HB2	1:D:173:SER:HB3	1.97	0.47
1:C:169:TRP:HB3	2:C:1432:FAD:C1'	2.45	0.47
1:C:242:GLY:N	1:C:243:PRO:HD3	2.29	0.47
1:A:89:ALA:O	1:A:90:THR:HB	2.15	0.47
1:A:189:ARG:HG3	4:A:2077:HOH:O	2.13	0.47
1:B:28:ALA:HA	1:B:48:PHE:CZ	2.49	0.47
1:C:289:ARG:HD3	1:C:293:GLU:OE2	2.15	0.47
1:C:151:GLN:HB2	4:C:2077:HOH:O	2.15	0.47
1:A:277:ALA:HB2	1:A:409:ARG:NH2	2.31	0.46

Continued on next page...

Continued from previous page...

Atom-1	Atom-2	Interatomic distance (Å)	Clash overlap (Å)
1:C:385:ASP:OD1	1:C:386:MSE:HG3	2.16	0.46
1:D:36:LYS:HB2	1:D:36:LYS:HZ3	1.80	0.46
1:D:172:ASN:O	1:D:181:ALA:HB2	2.15	0.46
1:A:118:LYS:N	1:A:119:PRO:HD2	2.31	0.46
1:A:6:LEU:HD21	1:A:335:TRP:CH2	2.51	0.46
1:C:96:ALA:HB3	1:C:172:ASN:HD21	1.81	0.46
1:B:164:SER:HB3	4:B:2114:HOH:O	2.15	0.46
1:B:336:LYS:HG3	1:D:332:LEU:HD21	1.97	0.46
1:D:41:ARG:O	1:D:45:THR:HG23	2.16	0.46
1:A:353:GLU:O	1:A:357:GLN:HG3	2.15	0.46
1:B:411:ARG:HH11	1:B:414:GLN:NE2	2.14	0.46
1:B:8:PRO:O	1:B:12:GLU:HB2	2.16	0.46
1:C:170:PRO:O	1:C:242:GLY:HA2	2.15	0.46
1:C:231:GLU:OE2	1:C:243:PRO:HG3	2.16	0.46
1:A:35:GLN:NE2	1:A:40:SER:HB3	2.31	0.46
1:A:415:ARG:HD2	4:A:2157:HOH:O	2.16	0.46
1:B:199:ASP:HB3	1:B:202:VAL:CG1	2.45	0.46
1:C:179:LYS:HB3	1:C:179:LYS:NZ	2.31	0.46
1:C:234:LEU:HD11	4:C:2121:HOH:O	2.16	0.46
1:C:88:PRO:HG3	1:C:394:GLU:CD	2.37	0.46
1:B:88:PRO:HG2	1:B:394:GLU:OE1	2.16	0.45
1:C:64:ILE:HB	1:C:65:PRO:HD3	1.97	0.45
1:D:21:ALA:HA	1:D:25:LEU:HD22	1.98	0.45
1:A:62:VAL:O	1:A:68:GLY:HA3	2.15	0.45
1:B:118:LYS:N	1:B:119:PRO:HD2	2.32	0.45
1:C:21:ALA:CB	4:C:2007:HOH:O	2.55	0.45
1:A:119:PRO:HG2	1:A:120:PHE:CD2	2.52	0.45
1:B:276:SER:O	1:B:280:VAL:HG13	2.16	0.45
1:C:81:GLU:OE1	1:C:331:ARG:HD3	2.16	0.45
1:C:73:LEU:HB2	1:C:338:VAL:HB	1.98	0.45
1:D:37:ASP:O	1:D:41:ARG:HG3	2.17	0.45
1:A:379:MSE:CG	2:B:1432:FAD:H4'	2.40	0.45
1:B:142:TRP:CE2	1:B:143:LEU:HG	2.51	0.45
1:B:3:ASP:OD1	1:B:5:LYS:HB2	2.16	0.45
2:C:1432:FAD:C6	3:C:1433:NBT:H2	2.47	0.45
1:A:168:LEU:O	1:A:170:PRO:HD3	2.17	0.45
2:D:1432:FAD:O1P	2:D:1432:FAD:H52A	2.17	0.45
1:C:304:ARG:HG2	1:C:310:ILE:HG21	1.99	0.45
1:C:389:PRO:HB3	1:D:235:ALA:HB2	1.99	0.44
1:C:398:TYR:HA	1:C:401:PHE:CE2	2.52	0.44
1:C:401:PHE:C	1:C:401:PHE:CD2	2.89	0.44

Continued on next page...

Continued from previous page...

Atom-1	Atom-2	Interatomic distance (Å)	Clash overlap (Å)
1:D:371:ILE:HA	1:D:374:MSE:CE	2.47	0.44
1:B:314:GLN:HB2	1:C:314:GLN:HB2	1.98	0.44
1:C:276:SER:O	1:C:280:VAL:HG23	2.18	0.44
1:B:349:LYS:HD3	4:B:2146:HOH:O	2.17	0.44
1:B:411:ARG:HD3	1:B:411:ARG:HA	1.54	0.44
1:C:196:LYS:HA	1:C:197:PRO:HD3	1.86	0.44
1:D:38:GLN:HG2	1:D:41:ARG:NH2	2.33	0.44
1:B:50:ARG:HD2	1:B:126:GLU:OE2	2.17	0.44
1:D:171:SER:HA	1:D:241:SER:O	2.18	0.44
1:D:352:LEU:O	1:D:356:MSE:HG2	2.17	0.44
1:C:90:THR:O	1:C:94:ILE:HG13	2.17	0.44
1:C:169:TRP:CB	2:C:1432:FAD:H1'2	2.47	0.44
1:A:422:TYR:CE1	1:A:424:PRO:HG3	2.53	0.44
1:C:346:LEU:O	1:C:351:LYS:HE3	2.18	0.44
1:C:401:PHE:CD1	3:C:1433:NBT:H4C2	2.53	0.44
1:B:168:LEU:C	1:B:170:PRO:CD	2.86	0.44
1:C:118:LYS:N	1:C:119:PRO:HD2	2.32	0.44
1:D:356:MSE:SE	1:D:409:ARG:HD2	2.68	0.44
1:A:156:LYS:HD3	1:A:161:TRP:CE2	2.53	0.44
1:A:156:LYS:HE2	1:A:158:GLY:O	2.17	0.44
1:D:152:THR:HA	1:D:165:GLY:HA3	1.99	0.44
1:D:227:GLN:HE21	1:D:246:ARG:HE	1.66	0.44
1:C:390:ARG:O	1:C:394:GLU:HG3	2.17	0.43
1:D:132:MSE:HE2	1:D:173:SER:CB	2.46	0.43
1:A:110:PRO:HA	1:A:113:GLN:HE21	1.83	0.43
1:B:281:GLY:O	1:B:285:ILE:HG13	2.18	0.43
1:C:180:GLY:HA3	1:C:218:ILE:CD1	2.48	0.43
1:D:168:LEU:O	1:D:170:PRO:HD3	2.18	0.43
1:D:341:LEU:HD23	1:D:351:LYS:HB3	1.99	0.43
1:B:260:THR:H	1:B:264:LYS:NZ	2.14	0.43
1:B:46:ARG:C	1:B:48:PHE:H	2.21	0.43
1:B:84:PHE:CE1	1:B:283:MSE:HG2	2.53	0.43
1:B:85:ALA:HA	1:B:286:GLY:O	2.19	0.43
1:C:168:LEU:O	1:C:169:TRP:CB	2.67	0.43
1:B:25:LEU:HB3	1:B:87:GLU:HB3	2.00	0.43
1:B:62:VAL:O	1:B:68:GLY:HA3	2.18	0.43
1:C:101:LEU:HD12	1:C:183:LEU:HD23	1.99	0.43
1:C:135:GLU:HG2	1:C:167:LYS:HD3	2.00	0.43
1:C:264:LYS:NZ	1:C:264:LYS:HB2	2.34	0.43
1:A:322:ASP:O	1:A:326:ARG:HG3	2.19	0.43
1:C:21:ALA:HB1	1:C:25:LEU:HB2	2.01	0.43

Continued on next page...

Continued from previous page...

Atom-1	Atom-2	Interatomic distance (Å)	Clash overlap (Å)
1:A:168:LEU:O	1:A:169:TRP:CB	2.66	0.43
1:A:171:SER:CB	3:A:1433:NBT:H1C2	2.49	0.43
1:B:92:ILE:HG21	1:B:240:THR:CG2	2.39	0.43
1:C:356:MSE:HE1	1:C:409:ARG:NH1	2.34	0.43
1:D:169:TRP:N	1:D:170:PRO:CD	2.82	0.43
1:A:28:ALA:HA	1:A:48:PHE:CZ	2.53	0.42
1:B:346:LEU:O	1:B:351:LYS:HE3	2.19	0.42
1:D:21:ALA:HA	1:D:25:LEU:HB2	2.01	0.42
1:A:326:ARG:CG	1:A:365:VAL:HG22	2.49	0.42
1:B:47:PRO:C	4:B:2018:HOH:O	2.57	0.42
1:D:128:LEU:HD11	1:D:176:TRP:CE2	2.55	0.42
1:B:257:LEU:HD22	1:B:259:CYS:O	2.18	0.42
1:D:423:GLU:CB	1:D:426:ALA:HB2	2.48	0.42
1:A:168:LEU:C	1:A:170:PRO:CD	2.88	0.42
1:A:169:TRP:N	1:A:170:PRO:CD	2.83	0.42
1:B:383:ALA:HB3	1:B:385:ASP:OD1	2.20	0.42
1:D:276:SER:O	1:D:280:VAL:HG23	2.19	0.42
1:A:356:MSE:SE	1:A:409:ARG:HD2	2.69	0.42
1:B:109:SER:O	1:B:113:GLN:HG3	2.19	0.42
1:C:384:LYS:HB2	1:D:233:GLU:HB2	2.01	0.42
1:D:370:VAL:O	1:D:374:MSE:HG3	2.19	0.42
1:A:166:GLU:HG2	1:A:246:ARG:CB	2.49	0.42
1:C:28:ALA:HA	1:C:48:PHE:CZ	2.54	0.42
1:B:97:THR:HA	1:B:129:ALA:HB3	2.02	0.42
1:C:168:LEU:C	1:C:170:PRO:CD	2.86	0.42
1:A:121:ILE:HD11	4:A:2038:HOH:O	2.20	0.42
1:B:109:SER:OG	1:B:112:LEU:HB2	2.19	0.42
1:C:266:GLN:NE2	4:C:2133:HOH:O	2.53	0.42
1:C:89:ALA:O	1:C:90:THR:HB	2.20	0.42
1:D:89:ALA:C	1:D:91:SER:H	2.22	0.42
1:C:35:GLN:HE21	1:C:40:SER:HB3	1.85	0.42
1:D:401:PHE:C	1:D:401:PHE:CD2	2.93	0.42
1:C:180:GLY:HA3	1:C:218:ILE:HD12	2.01	0.42
1:C:64:ILE:N	1:C:65:PRO:CD	2.83	0.42
1:B:156:LYS:HD3	1:B:161:TRP:CE2	2.55	0.41
1:C:398:TYR:N	1:C:399:PRO:HD2	2.35	0.41
1:D:141:ASN:HB3	1:D:144:GLN:HE21	1.84	0.41
1:A:296:LEU:O	1:A:300:LYS:HG3	2.20	0.41
1:A:102:MSE:HE2	1:A:106:LEU:HD21	2.02	0.41
1:A:132:MSE:HE2	1:A:173:SER:HA	2.03	0.41
1:B:49:TYR:CD2	1:B:126:GLU:HB2	2.52	0.41

Continued on next page...

Continued from previous page...

Atom-1	Atom-2	Interatomic distance (Å)	Clash overlap (Å)
1:C:298:PHE:CZ	1:C:304:ARG:HD3	2.55	0.41
1:D:97:THR:HA	1:D:129:ALA:O	2.21	0.41
1:A:38:GLN:HG3	1:A:233:GLU:HA	2.02	0.41
1:D:171:SER:CB	3:D:1433:NBT:H1C2	2.51	0.41
1:B:168:LEU:O	1:B:169:TRP:CB	2.68	0.41
1:C:142:TRP:CE2	1:C:143:LEU:HG	2.55	0.41
1:C:25:LEU:HB3	1:C:87:GLU:HB3	2.01	0.41
1:D:392:LEU:O	1:D:395:VAL:HG12	2.20	0.41
1:C:18:GLN:O	1:C:22:ASN:HB2	2.21	0.41
1:D:29:SER:HA	1:D:32:TYR:CE1	2.56	0.41
1:A:398:TYR:HA	1:A:401:PHE:CE2	2.55	0.41
1:C:128:LEU:HG	1:C:172:ASN:HB3	2.03	0.41
1:D:109:SER:O	1:D:113:GLN:HG3	2.20	0.41
1:D:99:LEU:HD22	1:D:131:LEU:HD12	2.03	0.41
1:A:64:ILE:N	1:A:65:PRO:CD	2.83	0.41
1:B:99:LEU:HD22	1:B:131:LEU:CD1	2.50	0.41
1:B:155:ARG:HH21	1:B:162:VAL:HG11	1.86	0.41
1:B:25:LEU:HD11	1:B:83:LEU:HG	2.03	0.41
1:C:172:ASN:O	1:C:181:ALA:HB2	2.21	0.41
1:C:89:ALA:C	1:C:91:SER:H	2.24	0.41
1:D:88:PRO:HG2	1:D:394:GLU:OE2	2.21	0.41
1:A:257:LEU:HD21	1:A:261:PRO:HD3	2.02	0.41
1:A:299:ALA:HA	1:A:310:ILE:CG1	2.51	0.41
1:B:336:LYS:HD3	1:B:336:LYS:O	2.21	0.41
1:B:58:ILE:N	1:B:58:ILE:HD12	2.36	0.41
1:D:101:LEU:HD13	1:D:129:ALA:CB	2.51	0.41
1:D:39:LEU:O	1:D:43:GLN:HG3	2.20	0.41
1:D:90:THR:O	1:D:94:ILE:HG13	2.21	0.41
1:D:310:ILE:HA	1:D:313:HIS:CD2	2.56	0.41
1:D:25:LEU:HB3	1:D:87:GLU:HB3	2.02	0.41
1:A:128:LEU:HD11	1:A:176:TRP:CE2	2.57	0.40
1:A:229:LEU:HD11	1:A:246:ARG:HB2	2.03	0.40
1:B:267:GLY:O	1:B:271:THR:HG23	2.21	0.40
1:B:326:ARG:HG2	1:B:365:VAL:CG2	2.51	0.40
1:C:371:ILE:HD11	1:D:371:ILE:HD11	2.03	0.40
1:A:116:PHE:CD2	1:A:212:LEU:HD23	2.57	0.40
1:A:281:GLY:O	1:A:285:ILE:HG13	2.21	0.40
1:B:73:LEU:CB	1:B:338:VAL:HB	2.51	0.40
1:A:134:SER:OG	2:A:1432:FAD:H1'1	2.20	0.40
1:A:398:TYR:HB2	1:A:399:PRO:HD3	2.03	0.40
1:B:99:LEU:HD22	1:B:131:LEU:HD12	2.02	0.40

Continued on next page...

Continued from previous page...

Atom-1	Atom-2	Interatomic distance (Å)	Clash overlap (Å)
1:D:335:TRP:O	1:D:339:THR:HG23	2.21	0.40
1:D:38:GLN:HB3	1:D:38:GLN:HE21	1.68	0.40

There are no symmetry-related clashes.

5.3 Torsion angles [i](#)

5.3.1 Protein backbone [i](#)

In the following table, the Percentiles column shows the percent Ramachandran outliers of the chain as a percentile score with respect to all X-ray entries followed by that with respect to entries of similar resolution.

The Analysed column shows the number of residues for which the backbone conformation was analysed, and the total number of residues.

Mol	Chain	Analysed	Favoured	Allowed	Outliers	Percentiles	
1	A	428/439 (98%)	416 (97%)	10 (2%)	2 (0%)	31	33
1	B	428/439 (98%)	415 (97%)	12 (3%)	1 (0%)	49	57
1	C	428/439 (98%)	416 (97%)	11 (3%)	1 (0%)	49	57
1	D	428/439 (98%)	418 (98%)	9 (2%)	1 (0%)	49	57
All	All	1712/1756 (98%)	1665 (97%)	42 (2%)	5 (0%)	43	48

All (5) Ramachandran outliers are listed below:

Mol	Chain	Res	Type
1	A	169	TRP
1	B	169	TRP
1	C	169	TRP
1	D	169	TRP
1	A	243	PRO

5.3.2 Protein sidechains [i](#)

In the following table, the Percentiles column shows the percent sidechain outliers of the chain as a percentile score with respect to all X-ray entries followed by that with respect to entries of similar resolution.

The Analysed column shows the number of residues for which the sidechain conformation was

analysed, and the total number of residues.

Mol	Chain	Analysed	Rotameric	Outliers	Percentiles	
1	A	355/350 (101%)	343 (97%)	12 (3%)	40	50
1	B	355/350 (101%)	343 (97%)	12 (3%)	40	50
1	C	355/350 (101%)	341 (96%)	14 (4%)	35	44
1	D	355/350 (101%)	344 (97%)	11 (3%)	43	55
All	All	1420/1400 (101%)	1371 (96%)	49 (4%)	39	49

All (49) residues with a non-rotameric sidechain are listed below:

Mol	Chain	Res	Type
1	A	25	LEU
1	A	73	LEU
1	A	99	LEU
1	A	168	LEU
1	A	212	LEU
1	A	304	ARG
1	A	312	GLU
1	A	332	LEU
1	A	353	GLU
1	A	365	VAL
1	A	379	MSE
1	A	401	PHE
1	B	50	ARG
1	B	99	LEU
1	B	101	LEU
1	B	114	GLU
1	B	124	GLU
1	B	128	LEU
1	B	257	LEU
1	B	333	LEU
1	B	353	GLU
1	B	365	VAL
1	B	401	PHE
1	B	411	ARG
1	C	15	ARG
1	C	99	LEU
1	C	101	LEU
1	C	114	GLU
1	C	128	LEU
1	C	172	ASN
1	C	179	LYS

Continued on next page...

Continued from previous page...

Mol	Chain	Res	Type
1	C	257	LEU
1	C	346	LEU
1	C	349	LYS
1	C	353	GLU
1	C	391	LEU
1	C	401	PHE
1	C	411	ARG
1	D	5	LYS
1	D	25	LEU
1	D	36	LYS
1	D	99	LEU
1	D	124	GLU
1	D	172	ASN
1	D	257	LEU
1	D	333	LEU
1	D	349	LYS
1	D	401	PHE
1	D	411	ARG

Some sidechains can be flipped to improve hydrogen bonding and reduce clashes. All (49) such sidechains are listed below:

Mol	Chain	Res	Type
1	A	16	HIS
1	A	18	GLN
1	A	22	ASN
1	A	35	GLN
1	A	43	GLN
1	A	113	GLN
1	A	137	ASN
1	A	141	ASN
1	A	144	GLN
1	A	198	GLN
1	A	201	ASN
1	A	227	GLN
1	A	256	ASN
1	A	314	GLN
1	B	18	GLN
1	B	22	ASN
1	B	43	GLN
1	B	137	ASN
1	B	141	ASN
1	B	198	GLN

Continued on next page...

Continued from previous page...

Mol	Chain	Res	Type
1	B	201	ASN
1	B	220	ASN
1	B	393	ASN
1	B	405	ASN
1	B	412	GLN
1	B	414	GLN
1	C	16	HIS
1	C	35	GLN
1	C	43	GLN
1	C	137	ASN
1	C	141	ASN
1	C	172	ASN
1	C	393	ASN
1	C	412	GLN
1	C	414	GLN
1	D	10	GLN
1	D	18	GLN
1	D	55	HIS
1	D	61	GLN
1	D	137	ASN
1	D	144	GLN
1	D	172	ASN
1	D	198	GLN
1	D	207	GLN
1	D	220	ASN
1	D	227	GLN
1	D	357	GLN
1	D	393	ASN
1	D	405	ASN

5.3.3 RNA ⓘ

There are no RNA molecules in this entry.

5.4 Non-standard residues in protein, DNA, RNA chains ⓘ

There are no non-standard protein/DNA/RNA residues in this entry.

5.5 Carbohydrates ⓘ

There are no carbohydrates in this entry.

5.6 Ligand geometry

8 ligands are modelled in this entry.

In the following table, the Counts columns list the number of bonds (or angles) for which Mogul statistics could be retrieved, the number of bonds (or angles) that are observed in the model and the number of bonds (or angles) that are defined in the Chemical Component Dictionary. The Link column lists molecule types, if any, to which the group is linked. The Z score for a bond length (or angle) is the number of standard deviations the observed value is removed from the expected value. A bond length (or angle) with $|Z| > 2$ is considered an outlier worth inspection. RMSZ is the root-mean-square of all Z scores of the bond lengths (or angles).

Mol	Type	Chain	Res	Link	Bond lengths			Bond angles		
					Counts	RMSZ	# $ Z > 2$	Counts	RMSZ	# $ Z > 2$
2	FAD	A	1432	3	51,58,58	1.32	4 (7%)	57,89,89	2.03	7 (12%)
3	NBT	A	1433	2	5,6,6	4.76	1 (20%)	3,7,7	0.54	0
2	FAD	B	1432	3	51,58,58	1.31	4 (7%)	57,89,89	2.00	7 (12%)
3	NBT	B	1433	2	5,6,6	4.77	1 (20%)	3,7,7	0.52	0
2	FAD	C	1432	3	51,58,58	1.33	4 (7%)	57,89,89	2.01	7 (12%)
3	NBT	C	1433	2	5,6,6	4.79	1 (20%)	3,7,7	0.53	0
2	FAD	D	1432	3	51,58,58	1.29	4 (7%)	57,89,89	2.03	7 (12%)
3	NBT	D	1433	2	5,6,6	4.78	1 (20%)	3,7,7	0.55	0

In the following table, the Chirals column lists the number of chiral outliers, the number of chiral centers analysed, the number of these observed in the model and the number defined in the Chemical Component Dictionary. Similar counts are reported in the Torsion and Rings columns. '-' means no outliers of that kind were identified.

Mol	Type	Chain	Res	Link	Chirals	Torsions	Rings
2	FAD	A	1432	3	-	0/28/50/50	0/6/6/6
3	NBT	A	1433	2	-	0/4/6/6	0/0/0/0
2	FAD	B	1432	3	-	0/28/50/50	0/6/6/6
3	NBT	B	1433	2	-	0/4/6/6	0/0/0/0
2	FAD	C	1432	3	-	0/28/50/50	0/6/6/6
3	NBT	C	1433	2	-	0/4/6/6	0/0/0/0
2	FAD	D	1432	3	-	0/28/50/50	0/6/6/6
3	NBT	D	1433	2	-	0/4/6/6	0/0/0/0

All (20) bond length outliers are listed below:

Mol	Chain	Res	Type	Atoms	Z	Observed(Å)	Ideal(Å)
2	C	1432	FAD	C8A-N9A	-2.83	1.33	1.36
2	B	1432	FAD	C8A-N9A	-2.50	1.33	1.36

Continued on next page...

Continued from previous page...

Mol	Chain	Res	Type	Atoms	Z	Observed(Å)	Ideal(Å)
2	D	1432	FAD	C8A-N9A	-2.48	1.33	1.36
2	A	1432	FAD	C8A-N9A	-2.47	1.34	1.36
2	A	1432	FAD	O4B-C1B	2.56	1.44	1.41
2	C	1432	FAD	O4B-C1B	2.60	1.44	1.41
2	D	1432	FAD	O4B-C1B	2.63	1.44	1.41
2	B	1432	FAD	O4B-C1B	2.66	1.45	1.41
2	D	1432	FAD	C4-N3	4.19	1.40	1.33
2	B	1432	FAD	C4-N3	4.24	1.40	1.33
2	C	1432	FAD	C4-N3	4.29	1.40	1.33
2	A	1432	FAD	C4-N3	4.31	1.40	1.33
2	D	1432	FAD	C10-N1	5.11	1.40	1.33
2	C	1432	FAD	C10-N1	5.25	1.40	1.33
2	B	1432	FAD	C10-N1	5.35	1.40	1.33
2	A	1432	FAD	C10-N1	5.41	1.40	1.33
3	A	1433	NBT	O16-NCG	10.56	1.42	1.21
3	B	1433	NBT	O16-NCG	10.58	1.42	1.21
3	D	1433	NBT	O16-NCG	10.59	1.42	1.21
3	C	1433	NBT	O16-NCG	10.62	1.42	1.21

All (28) bond angle outliers are listed below:

Mol	Chain	Res	Type	Atoms	Z	Observed(°)	Ideal(°)
2	C	1432	FAD	N3A-C2A-N1A	-9.02	121.14	128.86
2	A	1432	FAD	N3A-C2A-N1A	-9.01	121.15	128.86
2	B	1432	FAD	N3A-C2A-N1A	-8.88	121.26	128.86
2	D	1432	FAD	N3A-C2A-N1A	-8.84	121.30	128.86
2	B	1432	FAD	C9A-N10-C10	-3.33	117.34	121.77
2	D	1432	FAD	P-O3P-PA	-3.29	121.58	132.63
2	A	1432	FAD	C9A-N10-C10	-3.29	117.39	121.77
2	C	1432	FAD	C9A-N10-C10	-3.26	117.43	121.77
2	D	1432	FAD	C9A-N10-C10	-3.05	117.70	121.77
2	A	1432	FAD	P-O3P-PA	-3.01	122.52	132.63
2	D	1432	FAD	C4-C4X-C10	-2.91	117.78	119.95
2	B	1432	FAD	P-O3P-PA	-2.84	123.09	132.63
2	C	1432	FAD	P-O3P-PA	-2.80	123.22	132.63
2	B	1432	FAD	C4-C4X-C10	-2.76	117.89	119.95
2	C	1432	FAD	C4-C4X-C10	-2.64	117.98	119.95
2	A	1432	FAD	C4-C4X-C10	-2.57	118.03	119.95
2	A	1432	FAD	C4'-C3'-C2'	-2.13	108.92	113.40
2	C	1432	FAD	C4'-C3'-C2'	-2.12	108.94	113.40
2	B	1432	FAD	C4X-C4-N3	-2.08	120.52	123.47
2	D	1432	FAD	C4'-C3'-C2'	-2.05	109.07	113.40

Continued on next page...

Continued from previous page...

Mol	Chain	Res	Type	Atoms	Z	Observed(°)	Ideal(°)
2	C	1432	FAD	C1'-N10-C9A	5.81	123.47	118.31
2	B	1432	FAD	C1'-N10-C9A	5.84	123.50	118.31
2	A	1432	FAD	C1'-N10-C9A	6.20	123.82	118.31
2	D	1432	FAD	C1'-N10-C9A	6.42	124.02	118.31
2	C	1432	FAD	C4-N3-C2	6.70	120.85	115.14
2	D	1432	FAD	C4-N3-C2	6.75	120.89	115.14
2	A	1432	FAD	C4-N3-C2	6.80	120.93	115.14
2	B	1432	FAD	C4-N3-C2	6.94	121.05	115.14

There are no chirality outliers.

There are no torsion outliers.

There are no ring outliers.

8 monomers are involved in 36 short contacts:

Mol	Chain	Res	Type	Clashes	Symm-Clashes
2	A	1432	FAD	6	0
3	A	1433	NBT	5	0
2	B	1432	FAD	9	0
3	B	1433	NBT	4	0
2	C	1432	FAD	7	0
3	C	1433	NBT	4	0
2	D	1432	FAD	5	0
3	D	1433	NBT	4	0

5.7 Other polymers [i](#)

There are no such residues in this entry.

5.8 Polymer linkage issues [i](#)

There are no chain breaks in this entry.

6 Fit of model and data

6.1 Protein, DNA and RNA chains

In the following table, the column labelled ‘#RSRZ> 2’ contains the number (and percentage) of RSRZ outliers, followed by percent RSRZ outliers for the chain as percentile scores relative to all X-ray entries and entries of similar resolution. The OWAB column contains the minimum, median, 95th percentile and maximum values of the occupancy-weighted average B-factor per residue. The column labelled ‘Q< 0.9’ lists the number of (and percentage) of residues with an average occupancy less than 0.9.

Mol	Chain	Analysed	<RSRZ>	#RSRZ>2	OWAB(Å ²)	Q<0.9
1	A	417/439 (94%)	-0.24	3 (0%) 87 86	18, 30, 50, 66	0
1	B	417/439 (94%)	-0.10	7 (1%) 70 68	20, 32, 51, 70	1 (0%)
1	C	417/439 (94%)	-0.27	5 (1%) 79 77	16, 29, 49, 64	1 (0%)
1	D	417/439 (94%)	-0.08	10 (2%) 59 56	22, 36, 56, 68	0
All	All	1668/1756 (94%)	-0.17	25 (1%) 73 72	16, 32, 53, 70	2 (0%)

All (25) RSRZ outliers are listed below:

Mol	Chain	Res	Type	RSRZ
1	D	36	LYS	3.4
1	B	108	ASP	3.3
1	B	431	SER	3.2
1	D	34	THR	3.2
1	B	36	LYS	3.2
1	C	36	LYS	3.1
1	B	99	LEU	2.9
1	C	108	ASP	2.9
1	D	431	SER	2.8
1	D	195	SER	2.7
1	B	344	GLU	2.6
1	B	124	GLU	2.6
1	D	421	ASP	2.4
1	C	34	THR	2.4
1	B	279	LEU	2.4
1	D	196	LYS	2.2
1	C	21	ALA	2.2
1	D	420	GLU	2.2
1	D	114	GLU	2.1
1	D	224	ASP	2.1
1	D	197	PRO	2.1

Continued on next page...

Continued from previous page...

Mol	Chain	Res	Type	RSRZ
1	A	224	ASP	2.0
1	A	99	LEU	2.0
1	A	159	ASN	2.0
1	C	421	ASP	2.0

6.2 Non-standard residues in protein, DNA, RNA chains [i](#)

There are no non-standard protein/DNA/RNA residues in this entry.

6.3 Carbohydrates [i](#)

There are no carbohydrates in this entry.

6.4 Ligands [i](#)

In the following table, the Atoms column lists the number of modelled atoms in the group and the number defined in the chemical component dictionary. The B-factors column lists the minimum, median, 95th percentile and maximum values of B factors of atoms in the group. The column labelled 'Q< 0.9' lists the number of atoms with occupancy less than 0.9.

Mol	Type	Chain	Res	Atoms	RSCC	RSR	B-factors(Å ²)	Q<0.9
3	NBT	A	1433	7/7	0.73	0.39	43,55,76,84	0
3	NBT	B	1433	7/7	0.74	0.46	50,52,76,88	0
3	NBT	D	1433	7/7	0.82	0.35	49,54,75,82	0
3	NBT	C	1433	7/7	0.85	0.32	45,53,71,77	0
2	FAD	D	1432	53/53	0.92	0.13	23,33,44,47	0
2	FAD	B	1432	53/53	0.92	0.14	15,32,44,47	0
2	FAD	A	1432	53/53	0.93	0.13	20,29,40,41	0
2	FAD	C	1432	53/53	0.94	0.12	19,29,40,43	0

6.5 Other polymers [i](#)

There are no such residues in this entry.