



Full wwPDB X-ray Structure Validation Report ⓘ

Mar 9, 2018 – 01:54 am GMT

PDB ID : 5C1M
Title : Crystal structure of active mu-opioid receptor bound to the agonist BU72
Authors : Huang, W.J.; Manglik, A.; Venkatakrisnan, A.J.; Laeremans, T.; Feinberg, E.N.; Sanborn, A.L.; Kato, H.E.; Livingston, K.E.; Thorsen, T.S.; Kling, R.; Granier, S.; Gmeiner, P.; Husbands, S.M.; Traynor, J.R.; Weis, W.I.; Steyaert, J.; Dror, R.O.; Kobilka, B.K.
Deposited on : 2015-06-15
Resolution : 2.10 Å(reported)

This is a Full wwPDB X-ray Structure Validation Report for a publicly released PDB entry.

We welcome your comments at validation@mail.wwpdb.org

A user guide is available at

<https://www.wwpdb.org/validation/2017/XrayValidationReportHelp>

with specific help available everywhere you see the ⓘ symbol.

The following versions of software and data (see [references ⓘ](#)) were used in the production of this report:

MolProbity : 4.02b-467
Mogul : 1.7.3 (157068), CSD as539be (2018)
Xtriage (Phenix) : 1.13
EDS : trunk30967
Percentile statistics : 20171227.v01 (using entries in the PDB archive December 27th 2017)
Refmac : 5.8.0158
CCP4 : 7.0 (Gargrove)
Ideal geometry (proteins) : Engh & Huber (2001)
Ideal geometry (DNA, RNA) : Parkinson et al. (1996)
Validation Pipeline (wwPDB-VP) : trunk30967

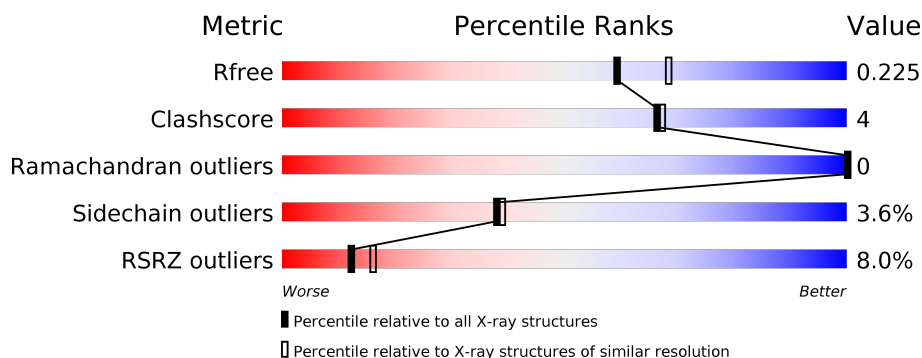
1 Overall quality at a glance

The following experimental techniques were used to determine the structure:

X-RAY DIFFRACTION

The reported resolution of this entry is 2.10 Å.

Percentile scores (ranging between 0-100) for global validation metrics of the entry are shown in the following graphic. The table shows the number of entries on which the scores are based.



Metric	Whole archive (#Entries)	Similar resolution (#Entries, resolution range(Å))
R_{free}	111664	4608 (2.10-2.10)
Clashscore	122126	5109 (2.10-2.10)
Ramachandran outliers	120053	5059 (2.10-2.10)
Sidechain outliers	120020	5060 (2.10-2.10)
RSRZ outliers	108989	4497 (2.10-2.10)

The table below summarises the geometric issues observed across the polymeric chains and their fit to the electron density. The red, orange, yellow and green segments on the lower bar indicate the fraction of residues that contain outliers for ≥ 3 , 2, 1 and 0 types of geometric quality criteria. A grey segment represents the fraction of residues that are not modelled. The numeric value for each fraction is indicated below the corresponding segment, with a dot representing fractions $\leq 5\%$. The upper red bar (where present) indicates the fraction of residues that have poor fit to the electron density. The numeric value is given above the bar.

Mol	Chain	Length	Quality of chain
1	A	296	<div> <div>9%</div> <div>89%</div> <div>10%</div> <div>•</div> </div>
2	B	125	<div> <div>4%</div> <div>83%</div> <div>10%</div> <div>•</div> <div>6%</div> </div>

2 Entry composition [i](#)

There are 8 unique types of molecules in this entry. The entry contains 3518 atoms, of which 0 are hydrogens and 0 are deuteriums.

In the tables below, the ZeroOcc column contains the number of atoms modelled with zero occupancy, the AltConf column contains the number of residues with at least one atom in alternate conformation and the Trace column contains the number of residues modelled with at most 2 atoms.

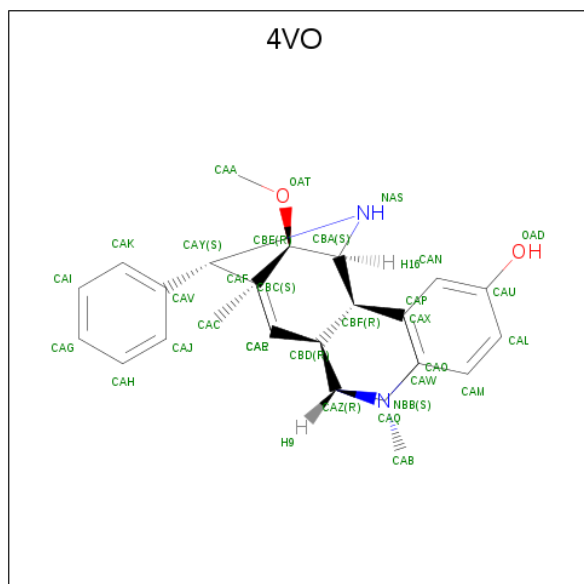
- Molecule 1 is a protein called Mu-type opioid receptor.

Mol	Chain	Residues	Atoms					ZeroOcc	AltConf	Trace
1	A	296	Total	C	N	O	S	0	3	0
			2374	1569	381	398	26			

- Molecule 2 is a protein called Nanobody 39.

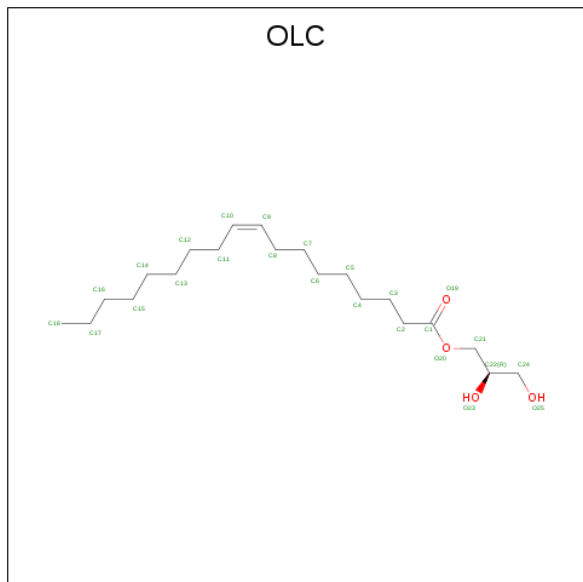
Mol	Chain	Residues	Atoms					ZeroOcc	AltConf	Trace
2	B	118	Total	C	N	O	S	0	1	0
			919	571	162	182	4			

- Molecule 3 is (2S,3S,3aR,5aR,6R,11bR,11cS)-3a-methoxy-3,14-dimethyl-2-phenyl-2,3,3a,6,7,11c-hexahydro-1H-6,11b-(epiminoethano)-3,5a-methanonaphtho[2,1-g]indol-10-ol (three-letter code: 4VO) (formula: C₂₈H₃₂N₂O₂).



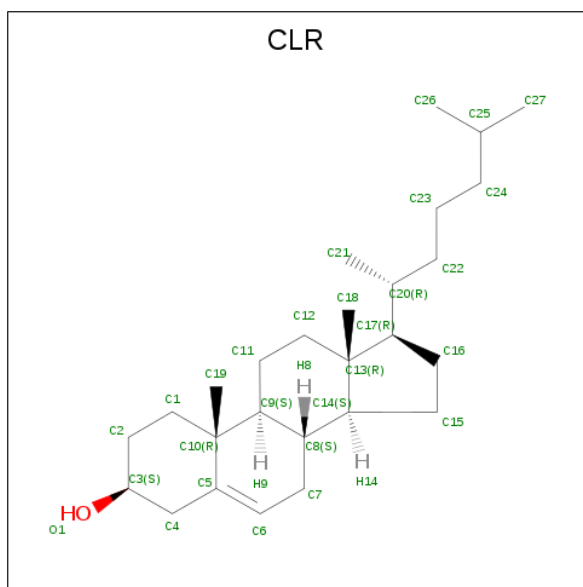
Mol	Chain	Residues	Atoms				ZeroOcc	AltConf
3	A	1	Total	C	N	O	0	0
			32	28	2	2		

- Molecule 4 is (2R)-2,3-dihydroxypropyl (9Z)-octadec-9-enoate (three-letter code: OLC) (formula: $C_{21}H_{40}O_4$).



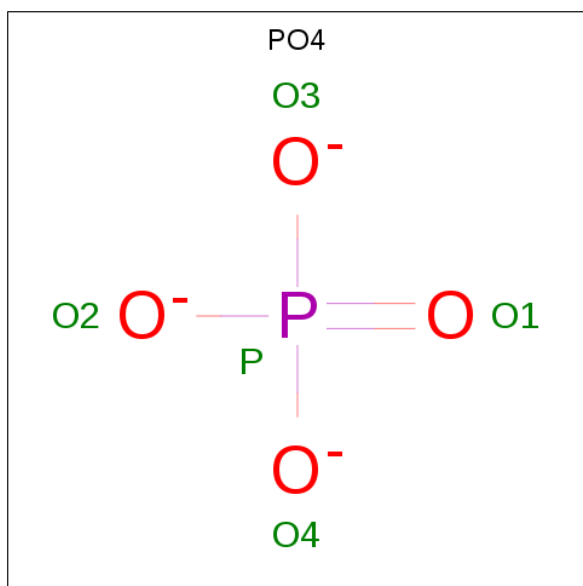
Mol	Chain	Residues	Atoms			ZeroOcc	AltConf
4	A	1	Total	C	O	0	0
			16	12	4		
4	A	1	Total	C	O	0	0
			18	14	4		

- Molecule 5 is CHOLESTEROL (three-letter code: CLR) (formula: $C_{27}H_{46}O$).



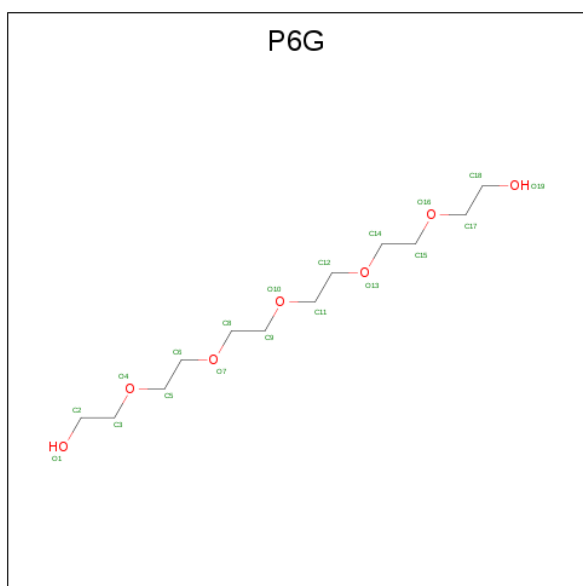
Mol	Chain	Residues	Atoms			ZeroOcc	AltConf
5	A	1	Total	C	O	0	0
			28	27	1		

- Molecule 6 is PHOSPHATE ION (three-letter code: PO4) (formula: O_4P).



Mol	Chain	Residues	Atoms			ZeroOcc	AltConf
6	A	1	Total	O	P	0	0
			5	4	1		

- Molecule 7 is HEXAETHYLENE GLYCOL (three-letter code: P6G) (formula: $C_{12}H_{26}O_7$).



Mol	Chain	Residues	Atoms			ZeroOcc	AltConf
7	A	1	Total	C	O	0	0
			19	12	7		
7	A	1	Total	C	O	0	0
			13	8	5		

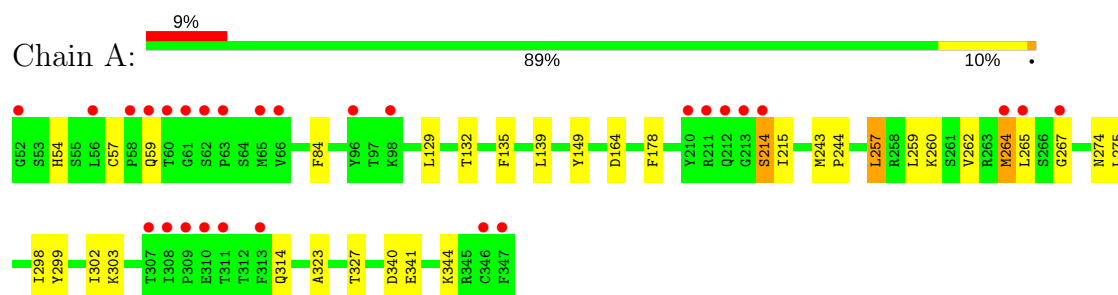
- Molecule 8 is water.

Mol	Chain	Residues	Atoms		ZeroOcc	AltConf
8	A	68	Total	O	0	0
			68	68		
8	B	26	Total	O	0	0
			26	26		

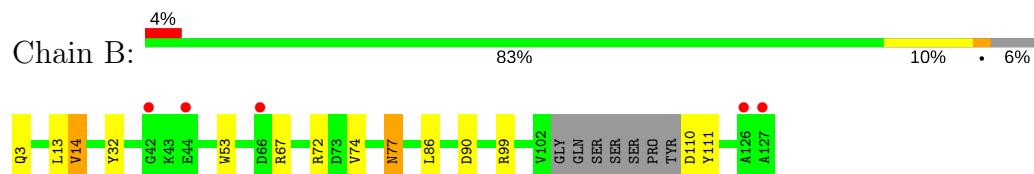
3 Residue-property plots [i](#)

These plots are drawn for all protein, RNA and DNA chains in the entry. The first graphic for a chain summarises the proportions of the various outlier classes displayed in the second graphic. The second graphic shows the sequence view annotated by issues in geometry and electron density. Residues are color-coded according to the number of geometric quality criteria for which they contain at least one outlier: green = 0, yellow = 1, orange = 2 and red = 3 or more. A red dot above a residue indicates a poor fit to the electron density ($RSRZ > 2$). Stretches of 2 or more consecutive residues without any outlier are shown as a green connector. Residues present in the sample, but not in the model, are shown in grey.

- Molecule 1: Mu-type opioid receptor



- Molecule 2: Nanobody 39



4 Data and refinement statistics

Property	Value	Source
Space group	I 21 21 21	Depositor
Cell constants a, b, c, α , β , γ	44.43Å 144.00Å 209.90Å 90.00° 90.00° 90.00°	Depositor
Resolution (Å)	42.45 – 2.10 43.47 – 1.80	Depositor EDS
% Data completeness (in resolution range)	99.8 (42.45-2.10) 99.7 (43.47-1.80)	Depositor EDS
R_{merge}	0.14	Depositor
R_{sym}	(Not available)	Depositor
$\langle I/\sigma(I) \rangle$ ¹	0.94 (at 1.79Å)	Xtriage
Refinement program	PHENIX	Depositor
R, R_{free}	0.185 , 0.222 0.191 , 0.225	Depositor DCC
R_{free} test set	3144 reflections (4.99%)	wwPDB-VP
Wilson B-factor (Å ²)	47.0	Xtriage
Anisotropy	0.230	Xtriage
Bulk solvent k_{sol} (e/Å ³), B_{sol} (Å ²)	0.33 , 59.9	EDS
L-test for twinning ²	$\langle L \rangle = 0.48$, $\langle L^2 \rangle = 0.31$	Xtriage
Estimated twinning fraction	No twinning to report.	Xtriage
F_o, F_c correlation	0.96	EDS
Total number of atoms	3518	wwPDB-VP
Average B, all atoms (Å ²)	57.0	wwPDB-VP

Xtriage's analysis on translational NCS is as follows: *The largest off-origin peak in the Patterson function is 5.82% of the height of the origin peak. No significant pseudotranslation is detected.*

¹Intensities estimated from amplitudes.

²Theoretical values of $\langle |L| \rangle$, $\langle L^2 \rangle$ for acentric reflections are 0.5, 0.333 respectively for untwinned datasets, and 0.375, 0.2 for perfectly twinned datasets.

5 Model quality

5.1 Standard geometry

Bond lengths and bond angles in the following residue types are not validated in this section: OLC, P6G, PO4, 4VO, YCM, CLR

The Z score for a bond length (or angle) is the number of standard deviations the observed value is removed from the expected value. A bond length (or angle) with $|Z| > 5$ is considered an outlier worth inspection. RMSZ is the root-mean-square of all Z scores of the bond lengths (or angles).

Mol	Chain	Bond lengths		Bond angles	
		RMSZ	# Z >5	RMSZ	# Z >5
1	A	0.39	0/2424	0.50	0/3304
2	B	0.37	0/939	0.55	0/1277
All	All	0.38	0/3363	0.51	0/4581

There are no bond length outliers.

There are no bond angle outliers.

There are no chirality outliers.

There are no planarity outliers.

5.2 Too-close contacts

In the following table, the Non-H and H(model) columns list the number of non-hydrogen atoms and hydrogen atoms in the chain respectively. The H(added) column lists the number of hydrogen atoms added and optimized by MolProbity. The Clashes column lists the number of clashes within the asymmetric unit, whereas Symm-Clashes lists symmetry related clashes.

Mol	Chain	Non-H	H(model)	H(added)	Clashes	Symm-Clashes
1	A	2374	0	2446	21	0
2	B	919	0	865	8	0
3	A	32	0	31	2	0
4	A	34	0	44	0	0
5	A	28	0	46	0	0
6	A	5	0	0	0	0
7	A	32	0	43	3	0
8	A	68	0	0	1	0
8	B	26	0	0	1	0
All	All	3518	0	3475	30	0

The all-atom clashscore is defined as the number of clashes found per 1000 atoms (including

hydrogen atoms). The all-atom clashscore for this structure is 4.

All (30) close contacts within the same asymmetric unit are listed below, sorted by their clash magnitude.

Atom-1	Atom-2	Interatomic distance (Å)	Clash overlap (Å)
1:A:264:MET:SD	1:A:264:MET:N	2.56	0.78
2:B:3:GLN:N	8:B:201:HOH:O	2.17	0.77
1:A:57:YCM:HB2	1:A:59:GLN:HE21	1.49	0.77
2:B:99:ARG:NH1	2:B:110:ASP:O	2.19	0.75
2:B:32:TYR:HD1	2:B:77[A]:ASN:HD21	1.34	0.75
1:A:164:ASP:OD1	8:A:501:HOH:O	2.14	0.64
1:A:132:THR:HG23	1:A:215:ILE:H	1.63	0.63
2:B:53:TRP:O	2:B:72:ARG:NH1	2.32	0.62
2:B:67:ARG:NH1	2:B:90:ASP:OD2	2.31	0.58
1:A:54:HIS:NE2	3:A:401:4VO:NAS	2.51	0.56
1:A:84:PHE:HD1	7:A:407:P6G:H121	1.70	0.56
1:A:243:MET:HB3	1:A:244:PRO:HD3	1.90	0.54
1:A:259:LEU:O	1:A:262:VAL:HG12	2.08	0.54
1:A:178:PHE:HB2	7:A:406:P6G:H31	1.90	0.54
2:B:72:ARG:NH1	2:B:74:VAL:HG12	2.23	0.53
1:A:57:YCM:HZ22	1:A:303:LYS:HE2	1.76	0.51
1:A:264:MET:HG2	1:A:267:GLY:HA3	1.92	0.50
1:A:323:ALA:O	1:A:327[B]:THR:HG23	2.13	0.48
1:A:135:PHE:HB3	1:A:139:LEU:HD23	1.95	0.48
2:B:14:VAL:HG21	2:B:86:LEU:HD13	1.96	0.48
1:A:260:LYS:HA	1:A:275:LEU:HD11	1.95	0.48
1:A:84:PHE:CD1	7:A:407:P6G:H121	2.49	0.46
1:A:57:YCM:NZ2	1:A:303:LYS:HE2	2.31	0.45
1:A:340:ASP:O	1:A:344:LYS:HB2	2.15	0.45
1:A:132:THR:HG23	1:A:215:ILE:HB	2.00	0.44
1:A:132:THR:OG1	1:A:214:SER:HB2	2.18	0.43
2:B:110:ASP:OD1	2:B:111:TYR:N	2.52	0.43
1:A:298:ILE:O	1:A:302:ILE:HG13	2.19	0.43
3:A:401:4VO:CAW	3:A:401:4VO:CAE	2.92	0.41
1:A:257:LEU:HA	1:A:257:LEU:HD12	1.92	0.40

There are no symmetry-related clashes.

5.3 Torsion angles

5.3.1 Protein backbone

In the following table, the Percentiles column shows the percent Ramachandran outliers of the chain as a percentile score with respect to all X-ray entries followed by that with respect to entries of similar resolution.

The Analysed column shows the number of residues for which the backbone conformation was analysed, and the total number of residues.

Mol	Chain	Analysed	Favoured	Allowed	Outliers	Percentiles	
1	A	296/296 (100%)	283 (96%)	13 (4%)	0	100	100
2	B	115/125 (92%)	112 (97%)	3 (3%)	0	100	100
All	All	411/421 (98%)	395 (96%)	16 (4%)	0	100	100

There are no Ramachandran outliers to report.

5.3.2 Protein sidechains

In the following table, the Percentiles column shows the percent sidechain outliers of the chain as a percentile score with respect to all X-ray entries followed by that with respect to entries of similar resolution.

The Analysed column shows the number of residues for which the sidechain conformation was analysed, and the total number of residues.

Mol	Chain	Analysed	Rotameric	Outliers	Percentiles	
1	A	267/267 (100%)	257 (96%)	10 (4%)	37	38
2	B	97/102 (95%)	93 (96%)	4 (4%)	33	33
All	All	364/369 (99%)	350 (96%)	14 (4%)	38	36

All (14) residues with a non-rotameric sidechain are listed below:

Mol	Chain	Res	Type
1	A	129	LEU
1	A	149	TYR
1	A	214	SER
1	A	257	LEU
1	A	264	MET
1	A	265	LEU
1	A	274	ASN
1	A	299	TYR

Continued on next page...

Continued from previous page...

Mol	Chain	Res	Type
1	A	314	GLN
1	A	341	GLU
2	B	13	LEU
2	B	14	VAL
2	B	77[A]	ASN
2	B	77[B]	ASN

Some sidechains can be flipped to improve hydrogen bonding and reduce clashes. There are no such sidechains identified.

5.3.3 RNA ⓘ

There are no RNA molecules in this entry.

5.4 Non-standard residues in protein, DNA, RNA chains ⓘ

1 non-standard protein/DNA/RNA residue is modelled in this entry.

In the following table, the Counts columns list the number of bonds (or angles) for which Mogul statistics could be retrieved, the number of bonds (or angles) that are observed in the model and the number of bonds (or angles) that are defined in the Chemical Component Dictionary. The Link column lists molecule types, if any, to which the group is linked. The Z score for a bond length (or angle) is the number of standard deviations the observed value is removed from the expected value. A bond length (or angle) with $|Z| > 2$ is considered an outlier worth inspection. RMSZ is the root-mean-square of all Z scores of the bond lengths (or angles).

Mol	Type	Chain	Res	Link	Bond lengths			Bond angles		
					Counts	RMSZ	# Z > 2	Counts	RMSZ	# Z > 2
1	YCM	A	57	1	9,9,10	1.39	1 (11%)	4,10,12	1.22	1 (25%)

In the following table, the Chirals column lists the number of chiral outliers, the number of chiral centers analysed, the number of these observed in the model and the number defined in the Chemical Component Dictionary. Similar counts are reported in the Torsion and Rings columns. '-' means no outliers of that kind were identified.

Mol	Type	Chain	Res	Link	Chirals	Torsions	Rings
1	YCM	A	57	1	-	0/6/8/10	0/0/0/0

All (1) bond length outliers are listed below:

Mol	Chain	Res	Type	Atoms	Z	Observed(Å)	Ideal(Å)
1	A	57	YCM	CD-SG	-2.39	1.76	1.81

All (1) bond angle outliers are listed below:

Mol	Chain	Res	Type	Atoms	Z	Observed(°)	Ideal(°)
1	A	57	YCM	CA-CB-SG	2.01	118.13	113.08

There are no chirality outliers.

There are no torsion outliers.

There are no ring outliers.

1 monomer is involved in 3 short contacts:

Mol	Chain	Res	Type	Clashes	Symm-Clashes
1	A	57	YCM	3	0

5.5 Carbohydrates [i](#)

There are no carbohydrates in this entry.

5.6 Ligand geometry [i](#)

7 ligands are modelled in this entry.

In the following table, the Counts columns list the number of bonds (or angles) for which Mogul statistics could be retrieved, the number of bonds (or angles) that are observed in the model and the number of bonds (or angles) that are defined in the Chemical Component Dictionary. The Link column lists molecule types, if any, to which the group is linked. The Z score for a bond length (or angle) is the number of standard deviations the observed value is removed from the expected value. A bond length (or angle) with $|Z| > 2$ is considered an outlier worth inspection. RMSZ is the root-mean-square of all Z scores of the bond lengths (or angles).

Mol	Type	Chain	Res	Link	Bond lengths			Bond angles		
					Counts	RMSZ	# Z > 2	Counts	RMSZ	# Z > 2
3	4VO	A	401	-	35,38,38	2.44	9 (25%)	45,64,64	2.93	11 (24%)
4	OLC	A	402	-	15,15,24	0.87	1 (6%)	16,16,25	0.87	1 (6%)
4	OLC	A	403	-	17,17,24	1.10	2 (11%)	18,18,25	1.17	2 (11%)
5	CLR	A	404	-	31,31,31	2.04	2 (6%)	48,48,48	1.47	4 (8%)
6	PO4	A	405	-	4,4,4	0.75	0	6,6,6	0.39	0
7	P6G	A	406	-	18,18,18	0.68	0	17,17,17	0.32	0
7	P6G	A	407	-	12,12,18	0.59	0	11,11,17	0.40	0

In the following table, the Chirals column lists the number of chiral outliers, the number of chiral centers analysed, the number of these observed in the model and the number defined in the Chemical Component Dictionary. Similar counts are reported in the Torsion and Rings columns. '-' means no outliers of that kind were identified.

Mol	Type	Chain	Res	Link	Chirals	Torsions	Rings
3	4VO	A	401	-	-	0/7/86/86	0/1/7/7
4	OLC	A	402	-	-	0/15/15/24	0/0/0/0
4	OLC	A	403	-	-	0/17/17/24	0/0/0/0
5	CLR	A	404	-	-	0/10/68/68	0/4/4/4
6	PO4	A	405	-	-	0/0/0/0	0/0/0/0
7	P6G	A	406	-	-	0/16/16/16	0/0/0/0
7	P6G	A	407	-	-	0/10/10/16	0/0/0/0

All (14) bond length outliers are listed below:

Mol	Chain	Res	Type	Atoms	Z	Observed(Å)	Ideal(Å)
3	A	401	4VO	CAV-CAY	-7.73	1.42	1.52
5	A	404	CLR	C7-C6	-7.65	1.33	1.50
5	A	404	CLR	C4-C5	-7.53	1.34	1.51
3	A	401	4VO	CBE-CAF	-5.45	1.41	1.50
3	A	401	4VO	CAQ-CAW	-5.22	1.42	1.51
3	A	401	4VO	CBD-CAE	-4.86	1.41	1.50
3	A	401	4VO	CBF-CAX	-3.88	1.43	1.51
3	A	401	4VO	CBD-CAZ	-2.25	1.52	1.54
3	A	401	4VO	CBE-CBC	-2.18	1.54	1.57
3	A	401	4VO	CBF-CBA	2.19	1.58	1.53
4	A	402	OLC	O20-C1	2.75	1.41	1.33
4	A	403	OLC	O20-C1	2.78	1.41	1.33
4	A	403	OLC	C9-C10	3.00	1.51	1.29
3	A	401	4VO	CAE-CAF	5.18	1.39	1.32

All (18) bond angle outliers are listed below:

Mol	Chain	Res	Type	Atoms	Z	Observed(°)	Ideal(°)
3	A	401	4VO	CAK-CAV-CAY	-5.06	112.84	120.80
3	A	401	4VO	CBC-CBE-CBA	-4.04	99.92	104.42
3	A	401	4VO	CAQ-CAZ-CBD	-3.61	107.65	111.44
3	A	401	4VO	CAR-CBD-CAZ	-2.90	111.74	115.32
5	A	404	CLR	C7-C8-C9	-2.55	106.53	109.71
4	A	403	OLC	C8-C9-C10	-2.43	111.63	131.33
3	A	401	4VO	CAR-CBD-CAE	-2.30	103.13	105.07
4	A	402	OLC	O20-C1-C2	2.74	119.84	111.92
3	A	401	4VO	CBE-CBC-CAY	2.81	103.49	100.19

Continued on next page...

Continued from previous page...

Mol	Chain	Res	Type	Atoms	Z	Observed(°)	Ideal(°)
3	A	401	4VO	CBF-CBD-CAE	2.87	109.02	107.53
5	A	404	CLR	C4-C5-C10	3.02	120.54	116.41
4	A	403	OLC	O20-C1-C2	3.12	120.93	111.92
3	A	401	4VO	CBF-CBD-CAZ	3.36	107.19	105.65
5	A	404	CLR	C8-C7-C6	4.32	119.14	112.73
3	A	401	4VO	CAJ-CAV-CAY	4.51	127.89	120.80
5	A	404	CLR	C3-C4-C5	5.76	122.03	112.02
3	A	401	4VO	CAR-CBD-CBF	7.87	113.38	108.69
3	A	401	4VO	CAV-CAY-NAS	13.10	134.62	113.38

There are no chirality outliers.

There are no torsion outliers.

There are no ring outliers.

3 monomers are involved in 5 short contacts:

Mol	Chain	Res	Type	Clashes	Symm-Clashes
3	A	401	4VO	2	0
7	A	406	P6G	1	0
7	A	407	P6G	2	0

5.7 Other polymers [i](#)

There are no such residues in this entry.

5.8 Polymer linkage issues [i](#)

There are no chain breaks in this entry.

6 Fit of model and data ⓘ

6.1 Protein, DNA and RNA chains ⓘ

In the following table, the column labelled ‘#RSRZ > 2’ contains the number (and percentage) of RSRZ outliers, followed by percent RSRZ outliers for the chain as percentile scores relative to all X-ray entries and entries of similar resolution. The OWAB column contains the minimum, median, 95th percentile and maximum values of the occupancy-weighted average B-factor per residue. The column labelled ‘Q < 0.9’ lists the number of (and percentage) of residues with an average occupancy less than 0.9.

Mol	Chain	Analysed	<RSRZ>	#RSRZ>2	OWAB(Å ²)	Q<0.9
1	A	295/296 (99%)	0.23	28 (9%) 8 11	32, 47, 107, 151	0
2	B	118/125 (94%)	0.12	5 (4%) 36 43	37, 55, 97, 117	0
All	All	413/421 (98%)	0.20	33 (7%) 12 16	32, 49, 103, 151	0

All (33) RSRZ outliers are listed below:

Mol	Chain	Res	Type	RSRZ
1	A	59	GLN	8.3
1	A	61	GLY	7.5
1	A	210	TYR	6.8
1	A	347	PHE	6.8
1	A	213	GLY	5.9
1	A	62	SER	5.4
2	B	126	ALA	5.4
1	A	60	THR	5.3
1	A	52	GLY	5.2
1	A	308	ILE	5.0
1	A	58	PRO	4.8
2	B	127	ALA	4.7
1	A	265	LEU	4.2
1	A	212	GLN	4.1
1	A	63	PRO	3.9
1	A	309	PRO	3.8
1	A	307	THR	3.8
1	A	346	CYS	3.7
1	A	96	TYR	3.7
1	A	65	MET	3.7
1	A	211	ARG	3.1
1	A	313	PHE	2.9
1	A	267	GLY	2.7
2	B	44	GLU	2.7

Continued on next page...

Continued from previous page...

Mol	Chain	Res	Type	RSRZ
1	A	56	LEU	2.5
2	B	66	ASP	2.3
1	A	214	SER	2.2
1	A	264	MET	2.2
1	A	98	LYS	2.1
1	A	311	THR	2.1
2	B	42	GLY	2.0
1	A	310	GLU	2.0
1	A	66	VAL	2.0

6.2 Non-standard residues in protein, DNA, RNA chains [i](#)

In the following table, the Atoms column lists the number of modelled atoms in the group and the number defined in the chemical component dictionary. The B-factors column lists the minimum, median, 95th percentile and maximum values of B factors of atoms in the group. The column labelled 'Q< 0.9' lists the number of atoms with occupancy less than 0.9.

Mol	Type	Chain	Res	Atoms	RSCC	RSR	B-factors(Å ²)	Q<0.9
1	YCM	A	57	10/11	0.76	0.18	83,88,97,159	0

6.3 Carbohydrates [i](#)

There are no carbohydrates in this entry.

6.4 Ligands [i](#)

In the following table, the Atoms column lists the number of modelled atoms in the group and the number defined in the chemical component dictionary. The B-factors column lists the minimum, median, 95th percentile and maximum values of B factors of atoms in the group. The column labelled 'Q< 0.9' lists the number of atoms with occupancy less than 0.9.

Mol	Type	Chain	Res	Atoms	RSCC	RSR	B-factors(Å ²)	Q<0.9
4	OLC	A	402	16/25	0.66	0.26	66,88,96,106	0
7	P6G	A	407	13/19	0.76	0.27	71,83,98,99	0
5	CLR	A	404	28/28	0.77	0.21	56,85,97,109	0
4	OLC	A	403	18/25	0.78	0.17	68,78,105,106	0
7	P6G	A	406	19/19	0.85	0.13	66,83,90,91	0
6	PO4	A	405	5/5	0.88	0.15	115,118,126,129	0
3	4VO	A	401	32/32	0.91	0.09	30,39,47,52	0

6.5 Other polymers [i](#)

There are no such residues in this entry.