



# wwPDB X-ray Structure Validation Summary Report ⓘ

May 6, 2019 – 11:50 PM EDT

PDB ID : 2C4M  
Title : Starch phosphorylase: structural studies explain oxyanion-dependent kinetic stability and regulatory control.  
Authors : Purvis, A.; Nidetzky, B.; Watson, K.  
Deposited on : 2005-10-20  
Resolution : 1.90 Å(reported)

This is a wwPDB X-ray Structure Validation Summary Report for a publicly released PDB entry.

We welcome your comments at [validation@mail.wwpdb.org](mailto:validation@mail.wwpdb.org)

A user guide is available at

<https://www.wwpdb.org/validation/2017/XrayValidationReportHelp>

with specific help available everywhere you see the ⓘ symbol.

---

The following versions of software and data (see [references ⓘ](#)) were used in the production of this report:

MolProbity : 4.02b-467  
Mogul : 1.8.0 (224370), CSD as540be (2019)  
Xtriage (Phenix) : 1.13  
EDS : rb-20031633  
Percentile statistics : 20171227.v01 (using entries in the PDB archive December 27th 2017)  
Refmac : 5.8.0158  
CCP4 : 7.0 (Gargrove)  
Ideal geometry (proteins) : Engh & Huber (2001)  
Ideal geometry (DNA, RNA) : Parkinson et al. (1996)  
Validation Pipeline (wwPDB-VP) : rb-20031633

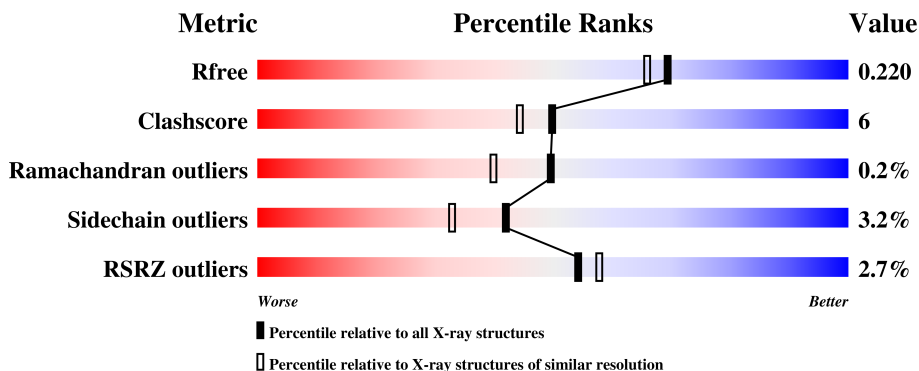
# 1 Overall quality at a glance ⓘ

The following experimental techniques were used to determine the structure:

*X-RAY DIFFRACTION*

The reported resolution of this entry is 1.90 Å.

Percentile scores (ranging between 0-100) for global validation metrics of the entry are shown in the following graphic. The table shows the number of entries on which the scores are based.



Metric	Whole archive (#Entries)	Similar resolution (#Entries, resolution range(Å))
$R_{free}$	111664	5502 (1.90-1.90)
Clashscore	122126	6115 (1.90-1.90)
Ramachandran outliers	120053	6048 (1.90-1.90)
Sidechain outliers	120020	6048 (1.90-1.90)
RSRZ outliers	108989	5379 (1.90-1.90)

The table below summarises the geometric issues observed across the polymeric chains and their fit to the electron density. The red, orange, yellow and green segments on the lower bar indicate the fraction of residues that contain outliers for  $\geq 3$ , 2, 1 and 0 types of geometric quality criteria. A grey segment represents the fraction of residues that are not modelled. The numeric value for each fraction is indicated below the corresponding segment, with a dot representing fractions  $\leq 5\%$ . The upper red bar (where present) indicates the fraction of residues that have poor fit to the electron density. The numeric value is given above the bar.

Mol	Chain	Length	Quality of chain
1	A	796	<div> <div>2%</div> <div>81% 17% ..</div> </div>
1	B	796	<div> <div>3%</div> <div>86% 12% ..</div> </div>
1	C	796	<div> <div>2%</div> <div>85% 14% ..</div> </div>
1	D	796	<div> <div>4%</div> <div>80% 18% ..</div> </div>

## 2 Entry composition

There are 6 unique types of molecules in this entry. The entry contains 26654 atoms, of which 0 are hydrogens and 0 are deuteriums.

In the tables below, the ZeroOcc column contains the number of atoms modelled with zero occupancy, the AltConf column contains the number of residues with at least one atom in alternate conformation and the Trace column contains the number of residues modelled with at most 2 atoms.

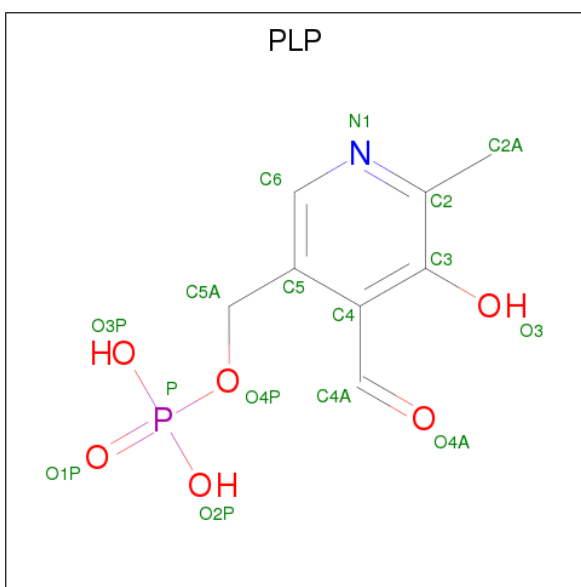
- Molecule 1 is a protein called GLYCOGEN PHOSPHORYLASE.

Mol	Chain	Residues	Atoms					ZeroOcc	AltConf	Trace
1	A	789	Total	C	N	O	S	63	0	1
			6328	4014	1088	1204	22			
1	B	789	Total	C	N	O	S	56	0	1
			6326	4014	1087	1203	22			
1	C	791	Total	C	N	O	S	57	0	1
			6344	4025	1091	1206	22			
1	D	789	Total	C	N	O	S	69	0	1
			6328	4014	1088	1204	22			

There are 4 discrepancies between the modelled and reference sequences:

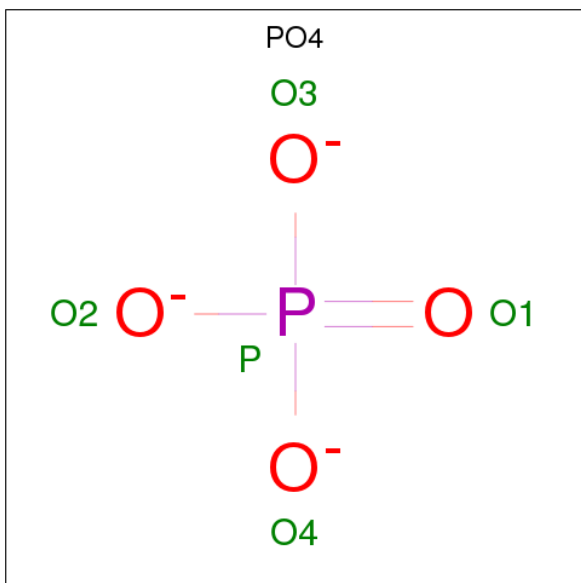
Chain	Residue	Modelled	Actual	Comment	Reference
A	224	ALA	SER	engineered mutation	UNP Q8KQ56
B	224	ALA	SER	engineered mutation	UNP Q8KQ56
C	224	ALA	SER	engineered mutation	UNP Q8KQ56
D	224	ALA	SER	engineered mutation	UNP Q8KQ56

- Molecule 2 is PYRIDOXAL-5'-PHOSPHATE (three-letter code: PLP) (formula: C<sub>8</sub>H<sub>10</sub>NO<sub>6</sub>P).



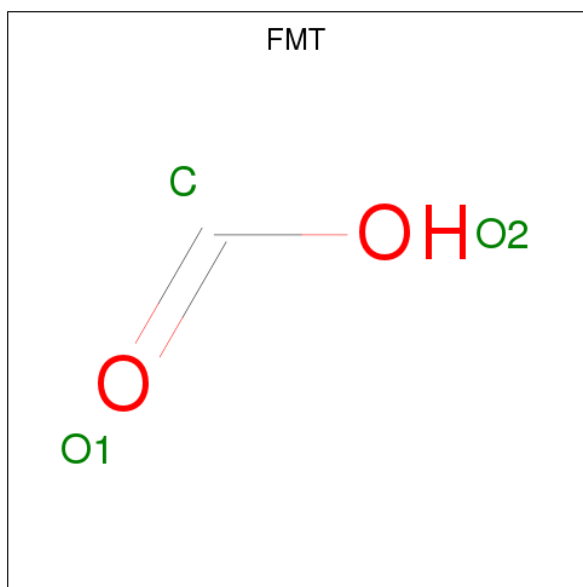
Mol	Chain	Residues	Atoms					ZeroOcc	AltConf
2	A	1	Total	C	N	O	P	0	0
			15	8	1	5	1		
2	B	1	Total	C	N	O	P	0	0
			15	8	1	5	1		
2	C	1	Total	C	N	O	P	0	0
			15	8	1	5	1		
2	D	1	Total	C	N	O	P	0	0
			15	8	1	5	1		

- Molecule 3 is PHOSPHATE ION (three-letter code: PO4) (formula: O<sub>4</sub>P).



Mol	Chain	Residues	Atoms	ZeroOcc	AltConf
3	A	1	Total O P 5 4 1	0	0
3	B	1	Total O P 5 4 1	0	0
3	B	1	Total O P 5 4 1	0	0
3	B	1	Total O P 5 4 1	0	0
3	B	1	Total O P 5 4 1	0	0
3	C	1	Total O P 5 4 1	0	0
3	C	1	Total O P 5 4 1	0	0
3	C	1	Total O P 5 4 1	0	0
3	D	1	Total O P 5 4 1	0	0

- Molecule 4 is FORMIC ACID (three-letter code: FMT) (formula: CH<sub>2</sub>O<sub>2</sub>).



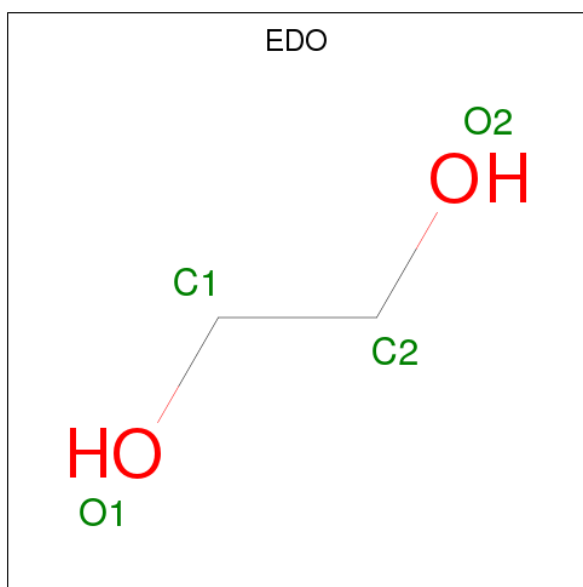
Mol	Chain	Residues	Atoms	ZeroOcc	AltConf
4	A	1	Total C O 3 1 2	0	0
4	A	1	Total C O 3 1 2	0	0
4	A	1	Total C O 3 1 2	0	0

*Continued on next page...*

*Continued from previous page...*

Mol	Chain	Residues	Atoms			ZeroOcc	AltConf
4	A	1	Total	C	O	0	0
			3	1	2		
4	A	1	Total	C	O	0	0
			3	1	2		
4	A	1	Total	C	O	0	0
			3	1	2		
4	A	1	Total	C	O	0	0
			3	1	2		
4	A	1	Total	C	O	0	0
			3	1	2		
4	B	1	Total	C	O	0	0
			3	1	2		
4	B	1	Total	C	O	0	0
			3	1	2		
4	C	1	Total	C	O	0	0
			3	1	2		
4	C	1	Total	C	O	0	0
			3	1	2		
4	C	1	Total	C	O	0	0
			3	1	2		
4	C	1	Total	C	O	0	0
			3	1	2		
4	D	1	Total	C	O	0	0
			3	1	2		
4	D	1	Total	C	O	0	0
			3	1	2		
4	D	1	Total	C	O	0	0
			3	1	2		

- Molecule 5 is 1,2-ETHANEDIOL (three-letter code: EDO) (formula: C<sub>2</sub>H<sub>6</sub>O<sub>2</sub>).



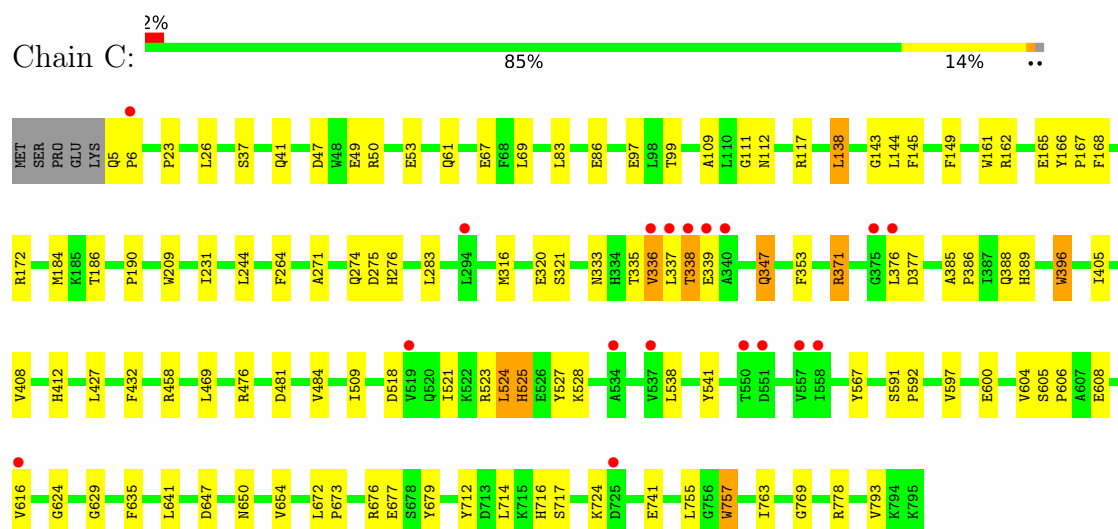
Mol	Chain	Residues	Atoms			ZeroOcc	AltConf
5	B	1	Total	C	O	0	0
			4	2	2		
5	B	1	Total	C	O	0	0
			4	2	2		
5	C	1	Total	C	O	0	0
			4	2	2		

- Molecule 6 is water.

Mol	Chain	Residues	Atoms		ZeroOcc	AltConf
6	A	303	Total	O	0	0
			303	303		
6	B	306	Total	O	0	0
			306	306		
6	C	340	Total	O	0	0
			340	340		
6	D	205	Total	O	0	0
			205	205		







• Molecule 1: GLYCOGEN PHOSPHORYLASE



## 4 Data and refinement statistics

Property	Value	Source
Space group	P 1 21 1	Depositor
Cell constants a, b, c, $\alpha$ , $\beta$ , $\gamma$	99.27Å 187.62Å 129.31Å 90.00° 112.48° 90.00°	Depositor
Resolution (Å)	30.00 – 1.90 29.93 – 1.90	Depositor EDS
% Data completeness (in resolution range)	89.3 (30.00-1.90) 89.5 (29.93-1.90)	Depositor EDS
$R_{merge}$	0.08	Depositor
$R_{sym}$	(Not available)	Depositor
$\langle I/\sigma(I) \rangle$ <sup>1</sup>	2.35 (at 1.91Å)	Xtriage
Refinement program	CNS 1.1	Depositor
R, $R_{free}$	0.216 , 0.232 0.203 , 0.220	Depositor DCC
$R_{free}$ test set	15209 reflections (4.97%)	wwPDB-VP
Wilson B-factor (Å <sup>2</sup> )	24.9	Xtriage
Anisotropy	0.467	Xtriage
Bulk solvent $k_{sol}$ (e/Å <sup>3</sup> ), $B_{sol}$ (Å <sup>2</sup> )	0.35 , 42.0	EDS
L-test for twinning <sup>2</sup>	$\langle  L  \rangle = 0.48$ , $\langle L^2 \rangle = 0.31$	Xtriage
Estimated twinning fraction	0.016 for h,-k,-h-l	Xtriage
$F_o, F_c$ correlation	0.95	EDS
Total number of atoms	26654	wwPDB-VP
Average B, all atoms (Å <sup>2</sup> )	31.0	wwPDB-VP

Xtriage's analysis on translational NCS is as follows: *The analyses of the Patterson function reveals a significant off-origin peak that is 26.29 % of the origin peak, indicating pseudo-translational symmetry. The chance of finding a peak of this or larger height randomly in a structure without pseudo-translational symmetry is equal to 2.7096e-03. The detected translational NCS is most likely also responsible for the elevated intensity ratio.*

<sup>1</sup>Intensities estimated from amplitudes.

<sup>2</sup>Theoretical values of  $\langle |L| \rangle$ ,  $\langle L^2 \rangle$  for acentric reflections are 0.5, 0.333 respectively for untwinned datasets, and 0.375, 0.2 for perfectly twinned datasets.

## 5 Model quality [i](#)

### 5.1 Standard geometry [i](#)

Bond lengths and bond angles in the following residue types are not validated in this section: PO4, FMT, EDO, PLP

The Z score for a bond length (or angle) is the number of standard deviations the observed value is removed from the expected value. A bond length (or angle) with  $|Z| > 5$  is considered an outlier worth inspection. RMSZ is the root-mean-square of all Z scores of the bond lengths (or angles).

Mol	Chain	Bond lengths		Bond angles	
		RMSZ	$\# Z  > 5$	RMSZ	$\# Z  > 5$
1	A	0.71	12/6478 (0.2%)	0.89	0/8801
1	B	0.56	5/6476 (0.1%)	0.73	0/8798
1	C	0.48	1/6494 (0.0%)	0.72	0/8822
1	D	0.47	0/6478	0.70	0/8801
All	All	0.56	18/25926 (0.1%)	0.76	0/35222

The worst 5 of 18 bond length outliers are listed below:

Mol	Chain	Res	Type	Atoms	Z	Observed(Å)	Ideal(Å)
1	A	428	TRP	NE1-CE2	8.84	1.49	1.37
1	B	502	TRP	NE1-CE2	8.79	1.49	1.37
1	A	354	TRP	NE1-CE2	8.77	1.49	1.37
1	C	757	TRP	NE1-CE2	8.75	1.49	1.37
1	A	502	TRP	NE1-CE2	8.70	1.48	1.37

There are no bond angle outliers.

There are no chirality outliers.

There are no planarity outliers.

### 5.2 Too-close contacts [i](#)

In the following table, the Non-H and H(model) columns list the number of non-hydrogen atoms and hydrogen atoms in the chain respectively. The H(added) column lists the number of hydrogen atoms added and optimized by MolProbity. The Clashes column lists the number of clashes within the asymmetric unit, whereas Symm-Clashes lists symmetry related clashes.

Mol	Chain	Non-H	H(model)	H(added)	Clashes	Symm-Clashes
1	A	6328	0	6116	80	0
1	B	6326	0	6118	54	0

*Continued on next page...*

*Continued from previous page...*

Mol	Chain	Non-H	H(model)	H(added)	Clashes	Symm-Clashes
1	C	6344	0	6138	77	0
1	D	6328	0	6116	103	0
2	A	15	0	7	0	0
2	B	15	0	7	0	0
2	C	15	0	7	0	0
2	D	15	0	7	2	0
3	A	5	0	0	0	0
3	B	20	0	0	1	0
3	C	15	0	0	0	0
3	D	5	0	0	0	0
4	A	27	0	18	0	0
4	B	6	0	4	0	0
4	C	12	0	8	0	0
4	D	12	0	8	0	0
5	B	8	0	12	2	0
5	C	4	0	6	0	0
6	A	303	0	0	7	0
6	B	306	0	0	3	0
6	C	340	0	0	3	0
6	D	205	0	0	1	0
All	All	26654	0	24572	310	0

The all-atom clashscore is defined as the number of clashes found per 1000 atoms (including hydrogen atoms). The all-atom clashscore for this structure is 6.

The worst 5 of 310 close contacts within the same asymmetric unit are listed below, sorted by their clash magnitude.

Atom-1	Atom-2	Interatomic distance (Å)	Clash overlap (Å)
1:C:6:PRO:HG2	1:C:86:GLU:HG2	1.56	0.85
1:B:6:PRO:HB2	1:B:8:PRO:HD3	1.60	0.83
1:D:244:LEU:HD12	1:D:245:TYR:HD1	1.45	0.79
1:C:112:ASN:HB2	1:C:244:LEU:HD21	1.64	0.79
1:D:380:THR:HA	1:D:383:ARG:HD3	1.64	0.78

There are no symmetry-related clashes.

## 5.3 Torsion angles ⓘ

### 5.3.1 Protein backbone ⓘ

In the following table, the Percentiles column shows the percent Ramachandran outliers of the chain as a percentile score with respect to all X-ray entries followed by that with respect to entries of similar resolution.

The Analysed column shows the number of residues for which the backbone conformation was analysed, and the total number of residues.

Mol	Chain	Analysed	Favoured	Allowed	Outliers	Percentiles	
1	A	787/796 (99%)	752 (96%)	32 (4%)	3 (0%)	36	25
1	B	787/796 (99%)	760 (97%)	25 (3%)	2 (0%)	43	33
1	C	789/796 (99%)	762 (97%)	26 (3%)	1 (0%)	53	44
1	D	787/796 (99%)	761 (97%)	25 (3%)	1 (0%)	53	44
All	All	3150/3184 (99%)	3035 (96%)	108 (3%)	7 (0%)	49	40

5 of 7 Ramachandran outliers are listed below:

Mol	Chain	Res	Type
1	A	339	GLU
1	A	338	THR
1	B	184	MET
1	B	629	GLY
1	D	629	GLY

### 5.3.2 Protein sidechains ⓘ

In the following table, the Percentiles column shows the percent sidechain outliers of the chain as a percentile score with respect to all X-ray entries followed by that with respect to entries of similar resolution.

The Analysed column shows the number of residues for which the sidechain conformation was analysed, and the total number of residues.

Mol	Chain	Analysed	Rotameric	Outliers	Percentiles	
1	A	660/668 (99%)	642 (97%)	18 (3%)	48	40
1	B	660/668 (99%)	636 (96%)	24 (4%)	38	28
1	C	662/668 (99%)	641 (97%)	21 (3%)	42	33
1	D	660/668 (99%)	638 (97%)	22 (3%)	41	32
All	All	2642/2672 (99%)	2557 (97%)	85 (3%)	42	33

5 of 85 residues with a non-rotameric sidechain are listed below:

Mol	Chain	Res	Type
1	B	660	GLU
1	C	338	THR
1	D	522	LYS
1	B	668	ARG
1	C	138	LEU

Some sidechains can be flipped to improve hydrogen bonding and reduce clashes. 5 of 23 such sidechains are listed below:

Mol	Chain	Res	Type
1	B	437	ASN
1	C	223	ASN
1	D	706	ASN
1	C	61	GLN
1	C	274	GLN

### 5.3.3 RNA [i](#)

There are no RNA molecules in this entry.

## 5.4 Non-standard residues in protein, DNA, RNA chains [i](#)

There are no non-standard protein/DNA/RNA residues in this entry.

## 5.5 Carbohydrates [i](#)

There are no carbohydrates in this entry.

## 5.6 Ligand geometry [i](#)

35 ligands are modelled in this entry.

In the following table, the Counts columns list the number of bonds (or angles) for which Mogul statistics could be retrieved, the number of bonds (or angles) that are observed in the model and the number of bonds (or angles) that are defined in the Chemical Component Dictionary. The Link column lists molecule types, if any, to which the group is linked. The Z score for a bond length (or angle) is the number of standard deviations the observed value is removed from the expected value. A bond length (or angle) with  $|Z| > 2$  is considered an outlier worth inspection. RMSZ is the root-mean-square of all Z scores of the bond lengths (or angles).

Mol	Type	Chain	Res	Link	Bond lengths			Bond angles		
					Counts	RMSZ	# Z  > 2	Counts	RMSZ	# Z  > 2
2	PLP	A	1634	1	15,15,16	2.21	7 (46%)	20,22,23	1.82	6 (30%)
3	PO4	A	1794	-	4,4,4	1.36	1 (25%)	6,6,6	0.86	0
4	FMT	A	1795	-	0,2,2	0.00	-	0,1,1	0.00	-
4	FMT	A	1796	-	0,2,2	0.00	-	0,1,1	0.00	-
4	FMT	A	1797	-	0,2,2	0.00	-	0,1,1	0.00	-
4	FMT	A	1798	-	0,2,2	0.00	-	0,1,1	0.00	-
4	FMT	A	1799	-	0,2,2	0.00	-	0,1,1	0.00	-
4	FMT	A	1800	-	0,2,2	0.00	-	0,1,1	0.00	-
4	FMT	A	1801	-	0,2,2	0.00	-	0,1,1	0.00	-
4	FMT	A	1802	-	0,2,2	0.00	-	0,1,1	0.00	-
4	FMT	A	1803	-	0,2,2	0.00	-	0,1,1	0.00	-
2	PLP	B	1634	1	15,15,16	1.91	6 (40%)	20,22,23	2.04	7 (35%)
3	PO4	B	1795	-	4,4,4	1.58	1 (25%)	6,6,6	0.88	0
3	PO4	B	1796	-	4,4,4	1.29	1 (25%)	6,6,6	0.94	0
3	PO4	B	1797	-	4,4,4	1.27	1 (25%)	6,6,6	0.82	0
3	PO4	B	1798	-	4,4,4	1.36	1 (25%)	6,6,6	0.86	0
4	FMT	B	1799	-	0,2,2	0.00	-	0,1,1	0.00	-
4	FMT	B	1800	-	0,2,2	0.00	-	0,1,1	0.00	-
5	EDO	B	1801	-	3,3,3	0.47	0	2,2,2	0.33	0
5	EDO	B	1802	-	3,3,3	0.47	0	2,2,2	0.33	0
2	PLP	C	1634	1	15,15,16	2.10	7 (46%)	20,22,23	1.97	7 (35%)
3	PO4	C	1796	-	4,4,4	1.80	1 (25%)	6,6,6	0.92	0
3	PO4	C	1797	-	4,4,4	1.29	1 (25%)	6,6,6	0.84	0
3	PO4	C	1798	-	4,4,4	1.37	1 (25%)	6,6,6	0.86	0
4	FMT	C	1799	-	0,2,2	0.00	-	0,1,1	0.00	-
4	FMT	C	1800	-	0,2,2	0.00	-	0,1,1	0.00	-
4	FMT	C	1801	-	0,2,2	0.00	-	0,1,1	0.00	-
4	FMT	C	1802	-	0,2,2	0.00	-	0,1,1	0.00	-
5	EDO	C	1803	-	3,3,3	0.48	0	2,2,2	0.33	0
2	PLP	D	1634	1	15,15,16	2.17	6 (40%)	20,22,23	2.22	9 (45%)
3	PO4	D	1794	-	4,4,4	1.68	1 (25%)	6,6,6	0.91	0
4	FMT	D	1795	-	0,2,2	0.00	-	0,1,1	0.00	-
4	FMT	D	1796	-	0,2,2	0.00	-	0,1,1	0.00	-
4	FMT	D	1797	-	0,2,2	0.00	-	0,1,1	0.00	-
4	FMT	D	1798	-	0,2,2	0.00	-	0,1,1	0.00	-

In the following table, the Chirals column lists the number of chiral outliers, the number of chiral centers analysed, the number of these observed in the model and the number defined in the Chemical Component Dictionary. Similar counts are reported in the Torsion and Rings columns. '-' means no outliers of that kind were identified.

Mol	Type	Chain	Res	Link	Chirals	Torsions	Rings
2	PLP	A	1634	1	-	0/6/6/8	0/1/1/1
3	PO4	A	1794	-	-	0/0/0/0	0/0/0/0
4	FMT	A	1795	-	-	0/0/0/0	0/0/0/0
4	FMT	A	1796	-	-	0/0/0/0	0/0/0/0
4	FMT	A	1797	-	-	0/0/0/0	0/0/0/0
4	FMT	A	1798	-	-	0/0/0/0	0/0/0/0
4	FMT	A	1799	-	-	0/0/0/0	0/0/0/0
4	FMT	A	1800	-	-	0/0/0/0	0/0/0/0
4	FMT	A	1801	-	-	0/0/0/0	0/0/0/0
4	FMT	A	1802	-	-	0/0/0/0	0/0/0/0
4	FMT	A	1803	-	-	0/0/0/0	0/0/0/0
2	PLP	B	1634	1	-	0/6/6/8	0/1/1/1
3	PO4	B	1795	-	-	0/0/0/0	0/0/0/0
3	PO4	B	1796	-	-	0/0/0/0	0/0/0/0
3	PO4	B	1797	-	-	0/0/0/0	0/0/0/0
3	PO4	B	1798	-	-	0/0/0/0	0/0/0/0
4	FMT	B	1799	-	-	0/0/0/0	0/0/0/0
4	FMT	B	1800	-	-	0/0/0/0	0/0/0/0
5	EDO	B	1801	-	-	0/1/1/1	0/0/0/0
5	EDO	B	1802	-	-	0/1/1/1	0/0/0/0
2	PLP	C	1634	1	-	0/6/6/8	0/1/1/1
3	PO4	C	1796	-	-	0/0/0/0	0/0/0/0
3	PO4	C	1797	-	-	0/0/0/0	0/0/0/0
3	PO4	C	1798	-	-	0/0/0/0	0/0/0/0
4	FMT	C	1799	-	-	0/0/0/0	0/0/0/0
4	FMT	C	1800	-	-	0/0/0/0	0/0/0/0
4	FMT	C	1801	-	-	0/0/0/0	0/0/0/0
4	FMT	C	1802	-	-	0/0/0/0	0/0/0/0
5	EDO	C	1803	-	-	0/1/1/1	0/0/0/0
2	PLP	D	1634	1	-	0/6/6/8	0/1/1/1
3	PO4	D	1794	-	-	0/0/0/0	0/0/0/0
4	FMT	D	1795	-	-	0/0/0/0	0/0/0/0
4	FMT	D	1796	-	-	0/0/0/0	0/0/0/0
4	FMT	D	1797	-	-	0/0/0/0	0/0/0/0
4	FMT	D	1798	-	-	0/0/0/0	0/0/0/0

The worst 5 of 35 bond length outliers are listed below:

Mol	Chain	Res	Type	Atoms	Z	Observed(Å)	Ideal(Å)
2	D	1634	PLP	P-O4P	-3.41	1.49	1.60
2	A	1634	PLP	P-O4P	-3.39	1.49	1.60
2	B	1634	PLP	P-O4P	-3.17	1.50	1.60
2	C	1634	PLP	P-O4P	-2.89	1.50	1.60

*Continued on next page...*



*Continued from previous page...*

Mol	Chain	Res	Type	Atoms	Z	Observed(Å)	Ideal(Å)
2	A	1634	PLP	C2A-C2	-2.65	1.45	1.50

The worst 5 of 29 bond angle outliers are listed below:

Mol	Chain	Res	Type	Atoms	Z	Observed(°)	Ideal(°)
2	C	1634	PLP	C5A-C5-C6	-4.21	112.34	119.36
2	B	1634	PLP	C5-C6-N1	-3.90	117.26	123.83
2	B	1634	PLP	C5A-C5-C6	-3.64	113.29	119.36
2	C	1634	PLP	C5-C6-N1	-3.39	118.11	123.83
2	A	1634	PLP	C5A-C5-C6	-3.34	113.80	119.36

There are no chirality outliers.

There are no torsion outliers.

There are no ring outliers.

3 monomers are involved in 5 short contacts:

Mol	Chain	Res	Type	Clashes	Symm-Clashes
3	B	1795	PO4	1	0
5	B	1801	EDO	2	0
2	D	1634	PLP	2	0

## 5.7 Other polymers [i](#)

There are no such residues in this entry.

## 5.8 Polymer linkage issues [i](#)

There are no chain breaks in this entry.

## 6 Fit of model and data [i](#)

### 6.1 Protein, DNA and RNA chains [i](#)

In the following table, the column labelled ‘#RSRZ> 2’ contains the number (and percentage) of RSRZ outliers, followed by percent RSRZ outliers for the chain as percentile scores relative to all X-ray entries and entries of similar resolution. The OWAB column contains the minimum, median, 95<sup>th</sup> percentile and maximum values of the occupancy-weighted average B-factor per residue. The column labelled ‘Q< 0.9’ lists the number of (and percentage) of residues with an average occupancy less than 0.9.

Mol	Chain	Analysed	<RSRZ>	#RSRZ>2	OWAB(Å <sup>2</sup> )	Q<0.9
1	A	789/796 (99%)	-0.01	17 (2%) 62 65	15, 29, 46, 75	16 (2%)
1	B	789/796 (99%)	-0.02	20 (2%) 57 61	15, 28, 48, 69	14 (1%)
1	C	791/796 (99%)	-0.04	18 (2%) 60 64	15, 27, 45, 74	15 (1%)
1	D	789/796 (99%)	0.15	29 (3%) 41 45	20, 34, 52, 71	16 (2%)
All	All	3158/3184 (99%)	0.02	84 (2%) 54 58	15, 29, 48, 75	61 (1%)

The worst 5 of 84 RSRZ outliers are listed below:

Mol	Chain	Res	Type	RSRZ
1	C	338	THR	6.0
1	D	340	ALA	5.4
1	C	336	VAL	5.3
1	A	337	LEU	4.3
1	B	793	VAL	4.3

### 6.2 Non-standard residues in protein, DNA, RNA chains [i](#)

There are no non-standard protein/DNA/RNA residues in this entry.

### 6.3 Carbohydrates [i](#)

There are no carbohydrates in this entry.

### 6.4 Ligands [i](#)

In the following table, the Atoms column lists the number of modelled atoms in the group and the number defined in the chemical component dictionary. The B-factors column lists the minimum, median, 95<sup>th</sup> percentile and maximum values of B factors of atoms in the group. The column labelled ‘Q< 0.9’ lists the number of atoms with occupancy less than 0.9.

Mol	Type	Chain	Res	Atoms	RSCC	RSR	B-factors( $\text{\AA}^2$ )	Q<0.9
4	FMT	C	1802	3/3	0.64	0.12	36,36,38,39	0
4	FMT	A	1802	3/3	0.72	0.16	42,42,42,42	0
4	FMT	D	1797	3/3	0.78	0.13	36,36,37,38	0
4	FMT	A	1801	3/3	0.83	0.14	35,35,36,38	0
4	FMT	A	1799	3/3	0.84	0.13	39,39,40,41	0
3	PO4	C	1798	5/5	0.85	0.17	56,57,58,58	2
4	FMT	B	1800	3/3	0.85	0.14	32,32,36,37	0
4	FMT	A	1803	3/3	0.85	0.12	39,39,39,40	0
4	FMT	A	1797	3/3	0.85	0.13	38,38,38,39	0
4	FMT	A	1796	3/3	0.86	0.17	39,39,39,41	0
4	FMT	C	1801	3/3	0.87	0.12	35,35,37,38	0
4	FMT	A	1795	3/3	0.87	0.15	41,41,43,43	0
4	FMT	C	1799	3/3	0.87	0.10	36,36,38,38	0
3	PO4	A	1794	5/5	0.88	0.14	56,57,57,57	3
4	FMT	D	1796	3/3	0.89	0.11	35,35,37,37	0
5	EDO	B	1802	4/4	0.89	0.11	27,27,31,34	0
4	FMT	A	1800	3/3	0.90	0.19	38,38,40,40	0
4	FMT	D	1795	3/3	0.90	0.18	32,32,33,36	0
5	EDO	C	1803	4/4	0.91	0.14	26,27,30,33	0
4	FMT	B	1799	3/3	0.93	0.09	37,37,40,40	0
3	PO4	B	1798	5/5	0.93	0.14	55,56,57,57	3
4	FMT	D	1798	3/3	0.93	0.08	40,40,40,40	0
5	EDO	B	1801	4/4	0.94	0.09	41,42,43,43	0
2	PLP	C	1634	15/16	0.94	0.10	23,24,42,43	0
2	PLP	A	1634	15/16	0.95	0.09	21,24,42,43	0
2	PLP	B	1634	15/16	0.95	0.09	19,21,42,44	0
4	FMT	A	1798	3/3	0.96	0.12	23,23,26,28	0
2	PLP	D	1634	15/16	0.96	0.09	28,30,48,48	0
4	FMT	C	1800	3/3	0.96	0.07	33,33,35,36	0
3	PO4	C	1796	5/5	0.97	0.12	36,39,41,42	4
3	PO4	B	1796	5/5	0.97	0.14	38,38,40,41	3
3	PO4	D	1794	5/5	0.97	0.11	37,39,41,41	3
3	PO4	B	1795	5/5	0.98	0.12	37,38,39,39	4
3	PO4	B	1797	5/5	0.99	0.09	37,39,41,41	0
3	PO4	C	1797	5/5	0.99	0.10	36,38,40,41	0

## 6.5 Other polymers ⓘ

There are no such residues in this entry.