



Full wwPDB X-ray Structure Validation Report ⓘ

Mar 9, 2018 – 11:41 am GMT

PDB ID : 4C5K
Title : Structure of the pyridoxal kinase from *Staphylococcus aureus* in complex with ADP
Authors : Nodwell, M.; Alte, F.; Sieber, S.A.; Schneider, S.
Deposited on : 2013-09-12
Resolution : 1.40 Å(reported)

This is a Full wwPDB X-ray Structure Validation Report for a publicly released PDB entry.

We welcome your comments at validation@mail.wwpdb.org

A user guide is available at

<https://www.wwpdb.org/validation/2017/XrayValidationReportHelp>

with specific help available everywhere you see the ⓘ symbol.

The following versions of software and data (see [references ⓘ](#)) were used in the production of this report:

MolProbity : 4.02b-467
Mogul : 1.7.3 (157068), CSD as539be (2018)
Xtriage (Phenix) : 1.13
EDS : trunk30967
Percentile statistics : 20171227.v01 (using entries in the PDB archive December 27th 2017)
Refmac : 5.8.0158
CCP4 : 7.0 (Gargrove)
Ideal geometry (proteins) : Engh & Huber (2001)
Ideal geometry (DNA, RNA) : Parkinson et al. (1996)
Validation Pipeline (wwPDB-VP) : trunk30967

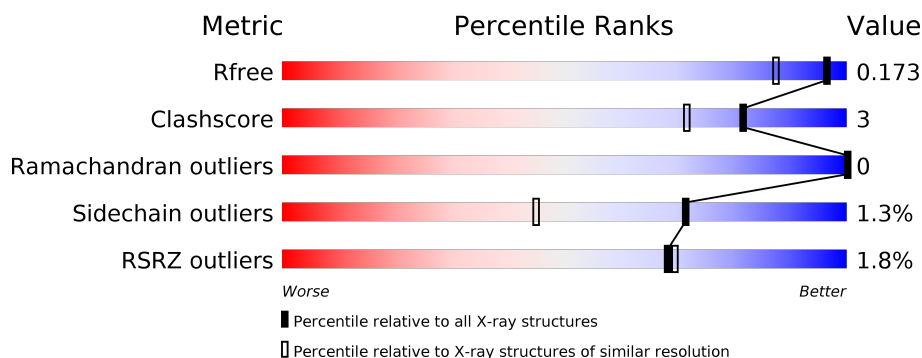
1 Overall quality at a glance ⓘ

The following experimental techniques were used to determine the structure:

X-RAY DIFFRACTION

The reported resolution of this entry is 1.40 Å.

Percentile scores (ranging between 0-100) for global validation metrics of the entry are shown in the following graphic. The table shows the number of entries on which the scores are based.



Metric	Whole archive (#Entries)	Similar resolution (#Entries, resolution range(Å))
R_{free}	111664	1450 (1.40-1.40)
Clashscore	122126	1541 (1.40-1.40)
Ramachandran outliers	120053	1500 (1.40-1.40)
Sidechain outliers	120020	1499 (1.40-1.40)
RSRZ outliers	108989	1412 (1.40-1.40)

The table below summarises the geometric issues observed across the polymeric chains and their fit to the electron density. The red, orange, yellow and green segments on the lower bar indicate the fraction of residues that contain outliers for ≥ 3 , 2, 1 and 0 types of geometric quality criteria. A grey segment represents the fraction of residues that are not modelled. The numeric value for each fraction is indicated below the corresponding segment, with a dot representing fractions $\leq 5\%$. The upper red bar (where present) indicates the fraction of residues that have poor fit to the electron density. The numeric value is given above the bar.

Mol	Chain	Length	Quality of chain
1	A	276	<div> <div>2%</div> <div> <div></div> <div>95%</div> <div>5%</div> <div>• •</div> </div> </div>
1	B	276	<div> <div>%</div> <div> <div></div> <div>92%</div> <div>7%</div> <div>•</div> </div> </div>
1	C	276	<div> <div>2%</div> <div> <div></div> <div>93%</div> <div>5%</div> <div>• •</div> </div> </div>
1	D	276	<div> <div>3%</div> <div> <div></div> <div>95%</div> <div>5%</div> <div></div> </div> </div>

2 Entry composition

There are 4 unique types of molecules in this entry. The entry contains 9504 atoms, of which 0 are hydrogens and 0 are deuteriums.

In the tables below, the ZeroOcc column contains the number of atoms modelled with zero occupancy, the AltConf column contains the number of residues with at least one atom in alternate conformation and the Trace column contains the number of residues modelled with at most 2 atoms.

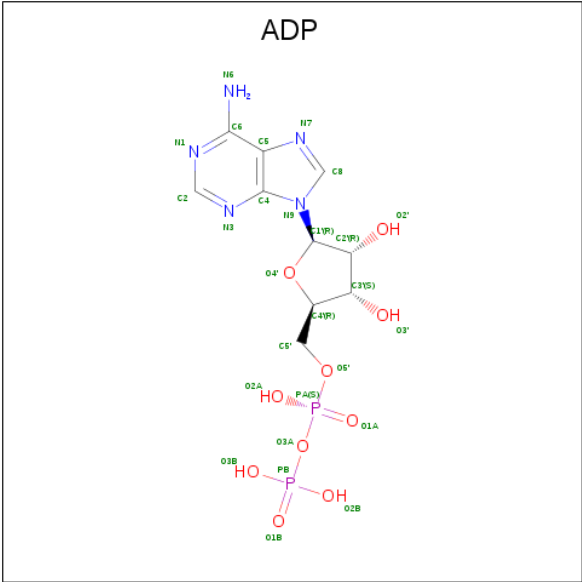
- Molecule 1 is a protein called PHOSPHOMETHYLPYRIMIDINE KINASE.

Mol	Chain	Residues	Atoms					ZeroOcc	AltConf	Trace
1	A	274	Total	C	N	O	S	0	7	0
			2104	1340	340	411	13			
1	B	274	Total	C	N	O	S	0	7	0
			2104	1347	334	409	14			
1	C	270	Total	C	N	O	S	0	7	0
			2076	1328	332	405	11			
1	D	276	Total	C	N	O	S	0	5	0
			2110	1343	340	414	13			

There are 4 discrepancies between the modelled and reference sequences:

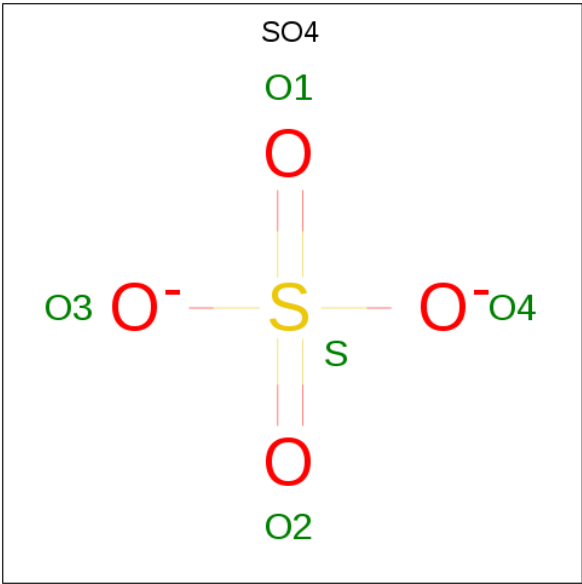
Chain	Residue	Modelled	Actual	Comment	Reference
A	1	GLY	-	expression tag	UNP Q99W31
B	1	GLY	-	expression tag	UNP Q99W31
C	1	GLY	-	expression tag	UNP Q99W31
D	1	GLY	-	expression tag	UNP Q99W31

- Molecule 2 is ADENOSINE-5'-DIPHOSPHATE (three-letter code: ADP) (formula: $C_{10}H_{15}N_5O_{10}P_2$).



Mol	Chain	Residues	Atoms					ZeroOcc	AltConf
2	A	1	Total	C	N	O	P	0	0
			27	10	5	10	2		
2	B	1	Total	C	N	O	P	0	0
			27	10	5	10	2		
2	C	1	Total	C	N	O	P	0	0
			27	10	5	10	2		
2	D	1	Total	C	N	O	P	0	1
			35	10	5	16	4		

- Molecule 3 is SULFATE ION (three-letter code: SO4) (formula: O₄S).



Mol	Chain	Residues	Atoms	ZeroOcc	AltConf
3	A	1	Total O S 5 4 1	0	0
3	A	1	Total O S 5 4 1	0	0
3	A	1	Total O S 5 4 1	0	0
3	B	1	Total O S 5 4 1	0	0
3	B	1	Total O S 5 4 1	0	0
3	B	1	Total O S 5 4 1	0	0
3	C	1	Total O S 5 4 1	0	0
3	C	1	Total O S 5 4 1	0	0
3	C	1	Total O S 5 4 1	0	0
3	D	1	Total O S 5 4 1	0	0
3	D	1	Total O S 5 4 1	0	0
3	D	1	Total O S 10 8 2	0	1
3	D	1	Total O S 5 4 1	0	0

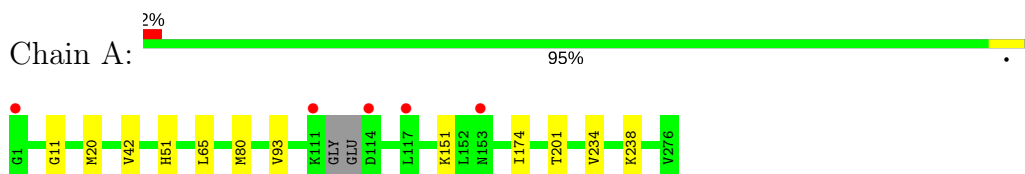
- Molecule 4 is water.

Mol	Chain	Residues	Atoms	ZeroOcc	AltConf
4	A	253	Total O 253 253	0	0
4	B	237	Total O 237 237	0	0
4	C	172	Total O 172 172	0	0
4	D	262	Total O 262 262	0	0

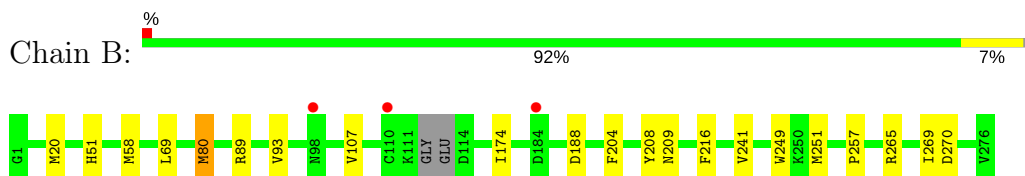
3 Residue-property plots [i](#)

These plots are drawn for all protein, RNA and DNA chains in the entry. The first graphic for a chain summarises the proportions of the various outlier classes displayed in the second graphic. The second graphic shows the sequence view annotated by issues in geometry and electron density. Residues are color-coded according to the number of geometric quality criteria for which they contain at least one outlier: green = 0, yellow = 1, orange = 2 and red = 3 or more. A red dot above a residue indicates a poor fit to the electron density ($RSRZ > 2$). Stretches of 2 or more consecutive residues without any outlier are shown as a green connector. Residues present in the sample, but not in the model, are shown in grey.

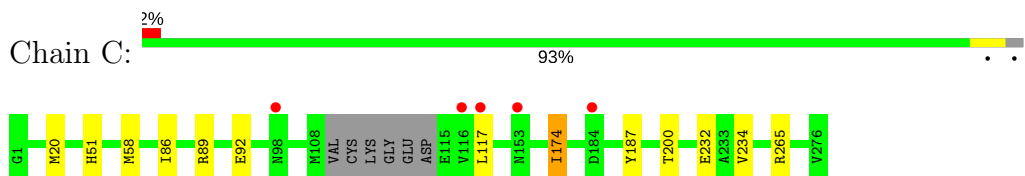
• Molecule 1: PHOSPHOMETHYLPYRIMIDINE KINASE



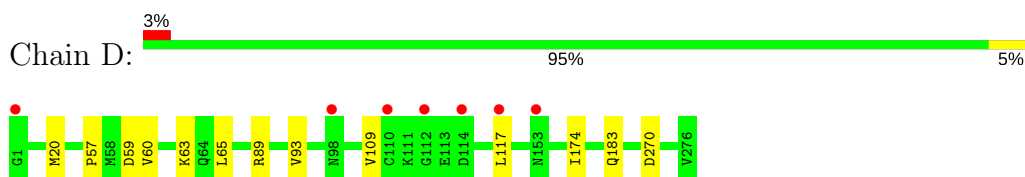
• Molecule 1: PHOSPHOMETHYLPYRIMIDINE KINASE



• Molecule 1: PHOSPHOMETHYLPYRIMIDINE KINASE



• Molecule 1: PHOSPHOMETHYLPYRIMIDINE KINASE



4 Data and refinement statistics

Property	Value	Source
Space group	P 21 21 21	Depositor
Cell constants a, b, c, α , β , γ	62.46Å 100.36Å 167.22Å 90.00° 90.00° 90.00°	Depositor
Resolution (Å)	48.78 – 1.40 48.73 – 1.40	Depositor EDS
% Data completeness (in resolution range)	97.1 (48.78-1.40) 97.1 (48.73-1.40)	Depositor EDS
R_{merge}	0.05	Depositor
R_{sym}	(Not available)	Depositor
$\langle I/\sigma(I) \rangle$ ¹	1.48 (at 1.40Å)	Xtriage
Refinement program	REFMAC 5.7.0032	Depositor
R, R_{free}	0.128 , 0.165 0.140 , 0.173	Depositor DCC
R_{free} test set	10053 reflections (5.01%)	wwPDB-VP
Wilson B-factor (Å ²)	16.5	Xtriage
Anisotropy	0.360	Xtriage
Bulk solvent k_{sol} (e/Å ³), B_{sol} (Å ²)	0.35 , 40.0	EDS
L-test for twinning ²	$\langle L \rangle = 0.48$, $\langle L^2 \rangle = 0.31$	Xtriage
Estimated twinning fraction	No twinning to report.	Xtriage
F_o, F_c correlation	0.98	EDS
Total number of atoms	9504	wwPDB-VP
Average B, all atoms (Å ²)	22.0	wwPDB-VP

Xtriage's analysis on translational NCS is as follows: *The largest off-origin peak in the Patterson function is 12.74% of the height of the origin peak. No significant pseudotranslation is detected.*

¹Intensities estimated from amplitudes.

²Theoretical values of $\langle |L| \rangle$, $\langle L^2 \rangle$ for acentric reflections are 0.5, 0.333 respectively for untwinned datasets, and 0.375, 0.2 for perfectly twinned datasets.

5 Model quality [i](#)

5.1 Standard geometry [i](#)

Bond lengths and bond angles in the following residue types are not validated in this section: SO4, ADP

The Z score for a bond length (or angle) is the number of standard deviations the observed value is removed from the expected value. A bond length (or angle) with $|Z| > 5$ is considered an outlier worth inspection. RMSZ is the root-mean-square of all Z scores of the bond lengths (or angles).

Mol	Chain	Bond lengths		Bond angles	
		RMSZ	$\# Z > 5$	RMSZ	$\# Z > 5$
1	A	0.72	0/2159	0.80	0/2923
1	B	0.73	1/2162 (0.0%)	0.85	3/2929 (0.1%)
1	C	0.71	2/2134 (0.1%)	0.77	1/2889 (0.0%)
1	D	0.75	0/2160	0.83	1/2926 (0.0%)
All	All	0.73	3/8615 (0.0%)	0.82	5/11667 (0.0%)

All (3) bond length outliers are listed below:

Mol	Chain	Res	Type	Atoms	Z	Observed(Å)	Ideal(Å)
1	C	92	GLU	CD-OE2	-6.35	1.18	1.25
1	B	257	PRO	N-CD	5.54	1.55	1.47
1	C	265	ARG	C-O	-5.12	1.13	1.23

All (5) bond angle outliers are listed below:

Mol	Chain	Res	Type	Atoms	Z	Observed(°)	Ideal(°)
1	D	89	ARG	NE-CZ-NH2	-9.01	115.80	120.30
1	B	265	ARG	NE-CZ-NH2	-8.23	116.18	120.30
1	B	265	ARG	NE-CZ-NH1	7.79	124.19	120.30
1	B	270	ASP	CB-CG-OD1	6.25	123.92	118.30
1	C	89	ARG	NE-CZ-NH2	-5.54	117.53	120.30

There are no chirality outliers.

There are no planarity outliers.

5.2 Too-close contacts [i](#)

In the following table, the Non-H and H(model) columns list the number of non-hydrogen atoms and hydrogen atoms in the chain respectively. The H(added) column lists the number of hydrogen

atoms added and optimized by MolProbity. The Clashes column lists the number of clashes within the asymmetric unit, whereas Symm-Clashes lists symmetry related clashes.

Mol	Chain	Non-H	H(model)	H(added)	Clashes	Symm-Clashes
1	A	2104	0	2100	11	0
1	B	2104	0	2117	20	0
1	C	2076	0	2093	7	0
1	D	2110	0	2099	8	0
2	A	27	0	12	0	0
2	B	27	0	12	1	0
2	C	27	0	12	1	0
2	D	35	0	0	0	0
3	A	15	0	0	0	0
3	B	15	0	0	1	0
3	C	15	0	0	1	0
3	D	25	0	0	0	0
4	A	253	0	0	1	0
4	B	237	0	0	4	0
4	C	172	0	0	2	0
4	D	262	0	0	1	0
All	All	9504	0	8445	47	0

The all-atom clashscore is defined as the number of clashes found per 1000 atoms (including hydrogen atoms). The all-atom clashscore for this structure is 3.

All (47) close contacts within the same asymmetric unit are listed below, sorted by their clash magnitude.

Atom-1	Atom-2	Interatomic distance (Å)	Clash overlap (Å)
4:B:2055:HOH:O	1:D:63:LYS:HD3	1.49	1.13
1:B:69[B]:LEU:HD11	1:B:93:VAL:HG23	1.53	0.89
2:C:1277:ADP:O2B	3:C:1279:SO4:O1	1.93	0.86
1:B:80:MET:HG2	1:B:107:VAL:CG1	2.06	0.85
4:B:2055:HOH:O	1:D:63:LYS:CD	2.21	0.70
1:D:65:LEU:HD13	1:D:93[B]:VAL:HG11	1.76	0.68
1:B:80:MET:HG2	1:B:107:VAL:HG11	1.76	0.67
1:A:80[B]:MET:O	1:A:80[B]:MET:HG3	1.96	0.66
1:A:174:ILE:HD13	1:A:234[B]:VAL:HG13	1.77	0.65
2:B:1277:ADP:O3B	3:B:1278:SO4:O4	2.18	0.60
1:C:117:LEU:HD23	1:D:270:ASP:HB3	1.83	0.59
1:B:69[B]:LEU:CD1	1:B:93:VAL:HG23	2.30	0.58
1:D:57:PRO:HB2	1:D:59[B]:ASP:OD1	2.02	0.58
1:B:80:MET:C	1:B:80:MET:HE3	2.27	0.56
1:C:174:ILE:HD13	1:C:234[A]:VAL:HG11	1.87	0.54

Continued on next page...

Continued from previous page...

Atom-1	Atom-2	Interatomic distance (Å)	Clash overlap (Å)
1:D:109:VAL:HG23	1:D:117:LEU:HB3	1.88	0.54
1:B:58[A]:MET:HE1	4:B:2084:HOH:O	2.07	0.54
1:C:232:GLU:HG3	4:C:2141:HOH:O	2.09	0.53
1:B:174:ILE:HD11	1:B:188:ASP:HB3	1.89	0.53
1:A:42:VAL:HG21	1:A:80[B]:MET:HE1	1.91	0.52
1:A:65:LEU:HD13	1:A:93:VAL:HG21	1.92	0.51
1:B:80:MET:HG2	1:B:107:VAL:CB	2.40	0.51
1:B:204:PHE:CZ	1:B:269[A]:ILE:HD13	2.45	0.51
1:C:232:GLU:HG3	4:C:2138:HOH:O	2.13	0.49
1:B:58[A]:MET:CE	4:B:2084:HOH:O	2.60	0.48
1:C:58:MET:HE2	1:C:58:MET:HA	1.96	0.46
1:D:59[B]:ASP:OD1	1:D:60:VAL:N	2.48	0.46
1:B:249:TRP:CZ3	1:B:251[B]:MET:HG2	2.50	0.46
1:B:80:MET:HG2	1:B:107:VAL:HB	1.99	0.45
1:D:183:GLN:NE2	4:D:2147:HOH:O	2.49	0.45
1:B:249:TRP:CH2	1:B:251[B]:MET:HG2	2.52	0.45
1:C:187:TYR:CD1	1:C:200[A]:THR:HG22	2.52	0.45
1:A:174:ILE:CD1	1:A:234[B]:VAL:CG1	2.97	0.43
1:A:80[B]:MET:HG3	4:A:2051:HOH:O	2.18	0.43
1:A:174:ILE:HD13	1:A:234[B]:VAL:CG1	2.48	0.42
1:B:208:TYR:C	1:B:209:ASN:HD22	2.22	0.42
1:B:58[B]:MET:HE3	1:B:89:ARG:HG3	2.00	0.42
1:B:58[B]:MET:CE	1:B:89:ARG:HG3	2.49	0.42
1:A:42:VAL:CG2	1:A:80[B]:MET:HE1	2.49	0.42
1:B:249:TRP:CH2	1:B:251[B]:MET:CG	3.03	0.41
1:A:174:ILE:CD1	1:A:234[B]:VAL:HG13	2.48	0.41
1:A:201:THR:HG23	1:A:238:LYS:HE3	2.02	0.41
1:B:80:MET:HG2	1:B:107:VAL:HG12	1.99	0.41
1:A:11:GLY:HA3	1:A:80[B]:MET:HE2	2.03	0.40
1:B:174:ILE:HD11	1:B:188:ASP:CB	2.51	0.40
1:C:58:MET:HE1	1:C:86:ILE:HG13	2.03	0.40
1:B:216:PHE:CA	1:B:241[B]:VAL:HG21	2.52	0.40

There are no symmetry-related clashes.

5.3 Torsion angles

5.3.1 Protein backbone

In the following table, the Percentiles column shows the percent Ramachandran outliers of the chain as a percentile score with respect to all X-ray entries followed by that with respect to entries

of similar resolution.

The Analysed column shows the number of residues for which the backbone conformation was analysed, and the total number of residues.

Mol	Chain	Analysed	Favoured	Allowed	Outliers	Percentiles	
1	A	277/276 (100%)	271 (98%)	6 (2%)	0	100	100
1	B	277/276 (100%)	271 (98%)	6 (2%)	0	100	100
1	C	273/276 (99%)	266 (97%)	7 (3%)	0	100	100
1	D	279/276 (101%)	271 (97%)	8 (3%)	0	100	100
All	All	1106/1104 (100%)	1079 (98%)	27 (2%)	0	100	100

There are no Ramachandran outliers to report.

5.3.2 Protein sidechains ⓘ

In the following table, the Percentiles column shows the percent sidechain outliers of the chain as a percentile score with respect to all X-ray entries followed by that with respect to entries of similar resolution.

The Analysed column shows the number of residues for which the sidechain conformation was analysed, and the total number of residues.

Mol	Chain	Analysed	Rotameric	Outliers	Percentiles	
1	A	223/221 (101%)	220 (99%)	3 (1%)	71	45
1	B	225/221 (102%)	222 (99%)	3 (1%)	71	45
1	C	222/221 (100%)	219 (99%)	3 (1%)	69	42
1	D	223/221 (101%)	221 (99%)	2 (1%)	81	60
All	All	893/884 (101%)	882 (99%)	11 (1%)	71	49

All (11) residues with a non-rotameric sidechain are listed below:

Mol	Chain	Res	Type
1	A	20	MET
1	A	51	HIS
1	A	151	LYS
1	B	20	MET
1	B	51	HIS
1	B	80	MET
1	C	20	MET
1	C	51	HIS

Continued on next page...

Continued from previous page...

Mol	Chain	Res	Type
1	C	174	ILE
1	D	20	MET
1	D	174	ILE

Some sidechains can be flipped to improve hydrogen bonding and reduce clashes. All (2) such sidechains are listed below:

Mol	Chain	Res	Type
1	A	153	ASN
1	B	206	GLN

5.3.3 RNA [i](#)

There are no RNA molecules in this entry.

5.4 Non-standard residues in protein, DNA, RNA chains [i](#)

There are no non-standard protein/DNA/RNA residues in this entry.

5.5 Carbohydrates [i](#)

There are no carbohydrates in this entry.

5.6 Ligand geometry [i](#)

19 ligands are modelled in this entry.

In the following table, the Counts columns list the number of bonds (or angles) for which Mogul statistics could be retrieved, the number of bonds (or angles) that are observed in the model and the number of bonds (or angles) that are defined in the Chemical Component Dictionary. The Link column lists molecule types, if any, to which the group is linked. The Z score for a bond length (or angle) is the number of standard deviations the observed value is removed from the expected value. A bond length (or angle) with $|Z| > 2$ is considered an outlier worth inspection. RMSZ is the root-mean-square of all Z scores of the bond lengths (or angles).

Mol	Type	Chain	Res	Link	Bond lengths			Bond angles		
					Counts	RMSZ	# Z > 2	Counts	RMSZ	# Z > 2
2	ADP	A	1277	-	25,29,29	1.42	3 (12%)	25,45,45	1.77	6 (24%)
3	SO4	A	1278	-	4,4,4	0.60	0	6,6,6	0.14	0
3	SO4	A	1279	-	4,4,4	0.67	0	6,6,6	0.57	0

Mol	Type	Chain	Res	Link	Bond lengths			Bond angles		
					Counts	RMSZ	# Z > 2	Counts	RMSZ	# Z > 2
3	SO4	A	1280	-	4,4,4	1.64	1 (25%)	6,6,6	0.54	0
2	ADP	B	1277	-	25,29,29	1.85	6 (24%)	25,45,45	2.33	6 (24%)
3	SO4	B	1278	-	4,4,4	0.82	0	6,6,6	0.51	0
3	SO4	B	1279	-	4,4,4	0.56	0	6,6,6	0.37	0
3	SO4	B	1280	-	4,4,4	0.50	0	6,6,6	0.49	0
2	ADP	C	1277	-	25,29,29	1.33	3 (12%)	25,45,45	2.23	7 (28%)
3	SO4	C	1278	-	4,4,4	0.53	0	6,6,6	0.45	0
3	SO4	C	1279	-	4,4,4	0.73	0	6,6,6	0.57	0
3	SO4	C	1280	-	4,4,4	0.31	0	6,6,6	0.07	0
2	ADP	D	1277[A]	-	25,29,29	1.16	4 (16%)	25,45,45	1.61	6 (24%)
2	ADP	D	1277[B]	-	25,29,29	1.07	3 (12%)	25,45,45	1.51	5 (20%)
3	SO4	D	1278	-	4,4,4	1.42	1 (25%)	6,6,6	0.73	0
3	SO4	D	1279	-	4,4,4	0.70	0	6,6,6	0.33	0
3	SO4	D	1280[A]	-	4,4,4	0.27	0	6,6,6	0.49	0
3	SO4	D	1280[B]	-	4,4,4	0.32	0	6,6,6	0.26	0
3	SO4	D	1281	-	4,4,4	0.53	0	6,6,6	0.25	0

In the following table, the Chirals column lists the number of chiral outliers, the number of chiral centers analysed, the number of these observed in the model and the number defined in the Chemical Component Dictionary. Similar counts are reported in the Torsion and Rings columns. '-' means no outliers of that kind were identified.

Mol	Type	Chain	Res	Link	Chirals	Torsions	Rings
2	ADP	A	1277	-	-	0/12/32/32	0/3/3/3
3	SO4	A	1278	-	-	0/0/0/0	0/0/0/0
3	SO4	A	1279	-	-	0/0/0/0	0/0/0/0
3	SO4	A	1280	-	-	0/0/0/0	0/0/0/0
2	ADP	B	1277	-	-	0/12/32/32	0/3/3/3
3	SO4	B	1278	-	-	0/0/0/0	0/0/0/0
3	SO4	B	1279	-	-	0/0/0/0	0/0/0/0
3	SO4	B	1280	-	-	0/0/0/0	0/0/0/0
2	ADP	C	1277	-	-	0/12/32/32	0/3/3/3
3	SO4	C	1278	-	-	0/0/0/0	0/0/0/0
3	SO4	C	1279	-	-	0/0/0/0	0/0/0/0
3	SO4	C	1280	-	-	0/0/0/0	0/0/0/0
2	ADP	D	1277[A]	-	-	0/12/32/32	0/3/3/3
2	ADP	D	1277[B]	-	-	0/12/32/32	0/3/3/3
3	SO4	D	1278	-	-	0/0/0/0	0/0/0/0
3	SO4	D	1279	-	-	0/0/0/0	0/0/0/0
3	SO4	D	1280[A]	-	-	0/0/0/0	0/0/0/0
3	SO4	D	1280[B]	-	-	0/0/0/0	0/0/0/0

Continued on next page...

Continued from previous page...

Mol	Type	Chain	Res	Link	Chirals	Torsions	Rings
3	SO4	D	1281	-	-	0/0/0/0	0/0/0/0

All (21) bond length outliers are listed below:

Mol	Chain	Res	Type	Atoms	Z	Observed(Å)	Ideal(Å)
2	B	1277	ADP	PB-O2B	-2.28	1.45	1.54
2	D	1277[B]	ADP	C8-N9	-2.22	1.34	1.36
2	D	1277[A]	ADP	C8-N9	-2.22	1.34	1.36
3	D	1278	SO4	O1-S	2.03	1.56	1.45
2	D	1277[B]	ADP	C2-N3	2.07	1.35	1.32
2	D	1277[A]	ADP	C2-N3	2.07	1.35	1.32
2	B	1277	ADP	C2-N3	2.13	1.35	1.32
2	D	1277[A]	ADP	PB-O3A	2.48	1.63	1.60
2	C	1277	ADP	PB-O3A	2.61	1.64	1.60
2	C	1277	ADP	C5-C4	2.75	1.46	1.40
2	A	1277	ADP	C5-C4	2.83	1.46	1.40
3	A	1280	SO4	O1-S	3.01	1.61	1.45
2	B	1277	ADP	PA-O1A	3.17	1.62	1.50
2	D	1277[B]	ADP	O4'-C1'	3.34	1.45	1.41
2	D	1277[A]	ADP	O4'-C1'	3.34	1.45	1.41
2	B	1277	ADP	C5-C4	3.46	1.48	1.40
2	C	1277	ADP	O4'-C1'	3.99	1.46	1.41
2	A	1277	ADP	PB-O3A	4.09	1.66	1.60
2	A	1277	ADP	O4'-C1'	4.18	1.47	1.41
2	B	1277	ADP	PB-O3A	4.29	1.66	1.60
2	B	1277	ADP	O4'-C1'	5.02	1.48	1.41

All (30) bond angle outliers are listed below:

Mol	Chain	Res	Type	Atoms	Z	Observed(°)	Ideal(°)
2	C	1277	ADP	N3-C2-N1	-8.69	121.42	128.86
2	B	1277	ADP	PA-O3A-PB	-6.39	111.14	132.63
2	B	1277	ADP	N3-C2-N1	-6.22	123.54	128.86
2	A	1277	ADP	N3-C2-N1	-5.63	124.05	128.86
2	D	1277[A]	ADP	PA-O3A-PB	-3.59	120.58	132.63
2	C	1277	ADP	PA-O3A-PB	-3.08	122.27	132.63
2	A	1277	ADP	PA-O3A-PB	-2.94	122.75	132.63
2	D	1277[B]	ADP	N3-C2-N1	-2.87	126.41	128.86
2	D	1277[A]	ADP	N3-C2-N1	-2.87	126.41	128.86
2	D	1277[B]	ADP	C5-C6-N1	-2.41	112.41	119.70
2	D	1277[A]	ADP	C5-C6-N1	-2.41	112.41	119.70
2	A	1277	ADP	C4-C5-N7	-2.38	107.11	109.41

Continued on next page...

Continued from previous page...

Mol	Chain	Res	Type	Atoms	Z	Observed(°)	Ideal(°)
2	A	1277	ADP	O3A-PB-O1B	-2.11	98.74	111.48
2	D	1277[B]	ADP	O3'-C3'-C4'	-2.10	104.96	111.06
2	D	1277[A]	ADP	O3'-C3'-C4'	-2.10	104.96	111.06
2	C	1277	ADP	O3A-PB-O1B	-2.03	99.25	111.48
2	C	1277	ADP	O2A-PA-O1A	2.11	122.88	112.14
2	C	1277	ADP	O3B-PB-O2B	2.12	115.97	107.59
2	C	1277	ADP	N6-C6-N1	2.22	123.17	118.57
2	A	1277	ADP	O3B-PB-O2B	2.54	117.63	107.59
2	B	1277	ADP	N6-C6-N1	2.69	124.16	118.57
2	A	1277	ADP	N6-C6-N1	2.76	124.31	118.57
2	B	1277	ADP	C2-N1-C6	2.80	123.51	118.75
2	D	1277[B]	ADP	N6-C6-N1	3.21	125.23	118.57
2	D	1277[A]	ADP	N6-C6-N1	3.21	125.23	118.57
2	C	1277	ADP	C2-N1-C6	3.27	124.31	118.75
2	D	1277[B]	ADP	C2-N1-C6	3.31	124.38	118.75
2	D	1277[A]	ADP	C2-N1-C6	3.31	124.38	118.75
2	B	1277	ADP	O2A-PA-O1A	3.42	129.51	112.14
2	B	1277	ADP	O2B-PB-O1B	3.51	124.30	110.60

There are no chirality outliers.

There are no torsion outliers.

There are no ring outliers.

4 monomers are involved in 2 short contacts:

Mol	Chain	Res	Type	Clashes	Symm-Clashes
2	B	1277	ADP	1	0
3	B	1278	SO4	1	0
2	C	1277	ADP	1	0
3	C	1279	SO4	1	0

5.7 Other polymers [i](#)

There are no such residues in this entry.

5.8 Polymer linkage issues [i](#)

There are no chain breaks in this entry.

6 Fit of model and data

6.1 Protein, DNA and RNA chains

In the following table, the column labelled ‘#RSRZ> 2’ contains the number (and percentage) of RSRZ outliers, followed by percent RSRZ outliers for the chain as percentile scores relative to all X-ray entries and entries of similar resolution. The OWAB column contains the minimum, median, 95th percentile and maximum values of the occupancy-weighted average B-factor per residue. The column labelled ‘Q< 0.9’ lists the number of (and percentage) of residues with an average occupancy less than 0.9.

Mol	Chain	Analysed	<RSRZ>	#RSRZ>2	OWAB(Å ²)	Q<0.9
1	A	274/276 (99%)	-0.34	5 (1%) 68 69	11, 19, 38, 81	0
1	B	274/276 (99%)	-0.42	3 (1%) 80 80	11, 19, 37, 58	0
1	C	270/276 (97%)	-0.33	5 (1%) 66 67	13, 21, 38, 51	0
1	D	276/276 (100%)	-0.40	7 (2%) 57 57	10, 16, 37, 72	0
All	All	1094/1104 (99%)	-0.37	20 (1%) 68 69	10, 19, 38, 81	0

All (20) RSRZ outliers are listed below:

Mol	Chain	Res	Type	RSRZ
1	C	117	LEU	4.5
1	D	112	GLY	4.0
1	D	117	LEU	3.9
1	D	1	GLY	3.3
1	A	1	GLY	3.3
1	B	184	ASP	3.1
1	C	116	VAL	2.9
1	A	114	ASP	2.7
1	D	110	CYS	2.6
1	A	111	LYS	2.5
1	B	98	ASN	2.4
1	C	98	ASN	2.4
1	A	117	LEU	2.3
1	C	153	ASN	2.3
1	C	184	ASP	2.1
1	D	114	ASP	2.1
1	B	110	CYS	2.1
1	D	98	ASN	2.1
1	A	153	ASN	2.0
1	D	153	ASN	2.0

6.2 Non-standard residues in protein, DNA, RNA chains [i](#)

There are no non-standard protein/DNA/RNA residues in this entry.

6.3 Carbohydrates [i](#)

There are no carbohydrates in this entry.

6.4 Ligands [i](#)

In the following table, the Atoms column lists the number of modelled atoms in the group and the number defined in the chemical component dictionary. The B-factors column lists the minimum, median, 95th percentile and maximum values of B factors of atoms in the group. The column labelled 'Q< 0.9' lists the number of atoms with occupancy less than 0.9.

Mol	Type	Chain	Res	Atoms	RSCC	RSR	B-factors(\AA^2)	Q<0.9
3	SO4	C	1279	5/5	0.76	0.18	22,28,52,58	5
3	SO4	A	1280	5/5	0.79	0.18	22,34,39,39	5
3	SO4	B	1278	5/5	0.89	0.14	16,28,32,37	5
3	SO4	C	1278	5/5	0.89	0.18	31,38,47,49	5
2	ADP	B	1277	27/27	0.91	0.15	22,26,33,41	0
3	SO4	A	1278	5/5	0.92	0.32	64,66,82,102	0
3	SO4	B	1280	5/5	0.93	0.26	38,43,58,59	5
3	SO4	D	1279	5/5	0.94	0.27	35,41,46,49	5
3	SO4	D	1278	5/5	0.94	0.13	21,22,24,27	0
3	SO4	C	1280	5/5	0.94	0.12	41,41,48,48	5
2	ADP	A	1277	27/27	0.94	0.08	14,17,28,40	0
3	SO4	D	1280[A]	5/5	0.95	0.11	18,23,31,35	5
3	SO4	D	1281	5/5	0.95	0.23	47,65,66,75	0
3	SO4	D	1280[B]	5/5	0.95	0.11	29,31,40,40	5
2	ADP	C	1277	27/27	0.96	0.09	19,22,33,41	0
3	SO4	A	1279	5/5	0.97	0.12	31,40,46,64	0
2	ADP	D	1277[A]	27/27	0.97	0.07	10,13,25,30	8
2	ADP	D	1277[B]	27/27	0.97	0.07	10,12,14,15	8
3	SO4	B	1279	5/5	0.97	0.20	38,43,58,58	0

6.5 Other polymers [i](#)

There are no such residues in this entry.