



# wwPDB X-ray Structure Validation Summary Report ⓘ

Dec 29, 2019 – 09:53 AM EST

PDB ID : 6C5H  
Title : S25-5 Fab in complex with Chlamydiaceae-specific LPS antigen  
Authors : Evans, S.V.; Haji-Ghassemi, O.  
Deposited on : 2018-01-16  
Resolution : 1.99 Å(reported)

This is a wwPDB X-ray Structure Validation Summary Report for a publicly released PDB entry.

We welcome your comments at [validation@mail.wwpdb.org](mailto:validation@mail.wwpdb.org)

A user guide is available at

<https://www.wwpdb.org/validation/2017/XrayValidationReportHelp>

with specific help available everywhere you see the ⓘ symbol.

---

The following versions of software and data (see [references ⓘ](#)) were used in the production of this report:

MolProbity : 4.02b-467  
Mogul : 1.8.0 (224370), CSD as540be (2019)  
Xtriage (Phenix) : 1.13  
EDS : 2.4  
buster-report : 1.1.7 (2018)  
Percentile statistics : 20171227.v01 (using entries in the PDB archive December 27th 2017)  
Refmac : 5.8.0158  
CCP4 : 7.0 (Gargrove)  
Ideal geometry (proteins) : Engh & Huber (2001)  
Ideal geometry (DNA, RNA) : Parkinson et al. (1996)  
Validation Pipeline (wwPDB-VP) : 2.4

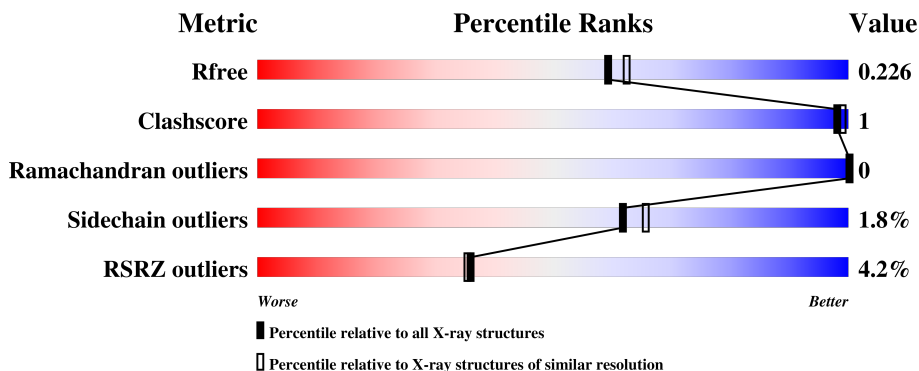
# 1 Overall quality at a glance

The following experimental techniques were used to determine the structure:

*X-RAY DIFFRACTION*

The reported resolution of this entry is 1.99 Å.

Percentile scores (ranging between 0-100) for global validation metrics of the entry are shown in the following graphic. The table shows the number of entries on which the scores are based.



Metric	Whole archive (#Entries)	Similar resolution (#Entries, resolution range(Å))
$R_{free}$	111664	7193 (2.00-2.00)
Clashscore	122126	8267 (2.00-2.00)
Ramachandran outliers	120053	8166 (2.00-2.00)
Sidechain outliers	120020	8165 (2.00-2.00)
RSRZ outliers	108989	7011 (2.00-2.00)

The table below summarises the geometric issues observed across the polymeric chains and their fit to the electron density. The red, orange, yellow and green segments on the lower bar indicate the fraction of residues that contain outliers for  $\geq 3$ , 2, 1 and 0 types of geometric quality criteria. A grey segment represents the fraction of residues that are not modelled. The numeric value for each fraction is indicated below the corresponding segment, with a dot representing fractions  $\leq 5\%$ . The upper red bar (where present) indicates the fraction of residues that have poor fit to the electron density. The numeric value is given above the bar.

Mol	Chain	Length	Quality of chain
1	H	218	<div> <div>5%</div> <div>96%</div> <div>..</div> </div>
2	L	219	<div> <div>3%</div> <div>95%</div> <div>..</div> </div>

## 2 Entry composition [i](#)

There are 12 unique types of molecules in this entry. The entry contains 3738 atoms, of which 0 are hydrogens and 0 are deuteriums.

In the tables below, the ZeroOcc column contains the number of atoms modelled with zero occupancy, the AltConf column contains the number of residues with at least one atom in alternate conformation and the Trace column contains the number of residues modelled with at most 2 atoms.

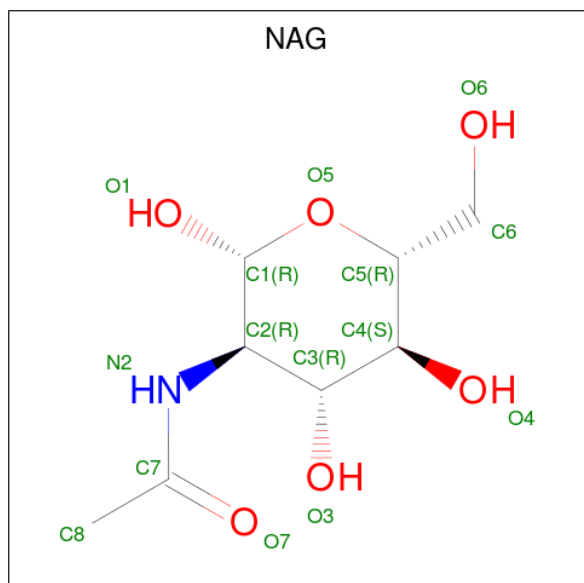
- Molecule 1 is a protein called Fab Heavy Chain (IgG1).

Mol	Chain	Residues	Atoms					ZeroOcc	AltConf	Trace
1	H	213	Total	C	N	O	S	0	0	0
			1614	1031	264	312	7			

- Molecule 2 is a protein called Fab Light Chain (IgG1 Kappa).

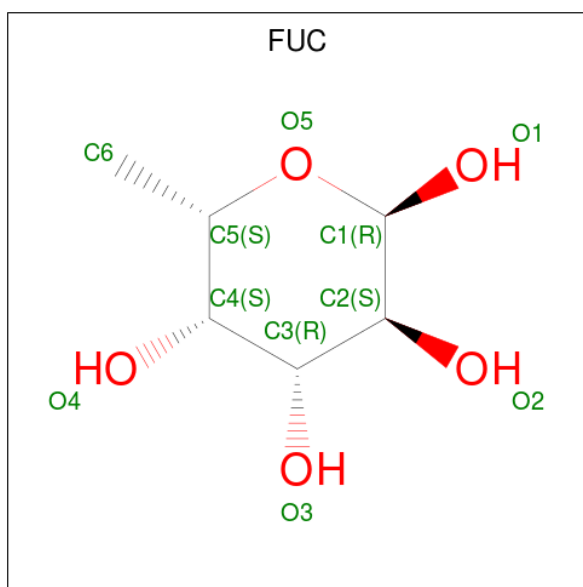
Mol	Chain	Residues	Atoms					ZeroOcc	AltConf	Trace
2	L	216	Total	C	N	O	S	0	0	0
			1682	1056	283	337	6			

- Molecule 3 is N-ACETYL-D-GLUCOSAMINE (three-letter code: NAG) (formula:  $C_8H_{15}NO_6$ ).



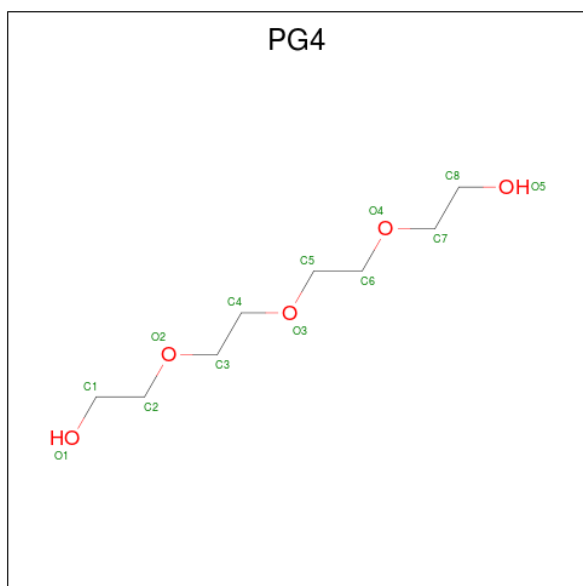
Mol	Chain	Residues	Atoms				ZeroOcc	AltConf
3	H	1	Total	C	N	O	0	0
			14	8	1	5		

- Molecule 4 is ALPHA-L-FUCOSE (three-letter code: FUC) (formula:  $C_6H_{12}O_5$ ).



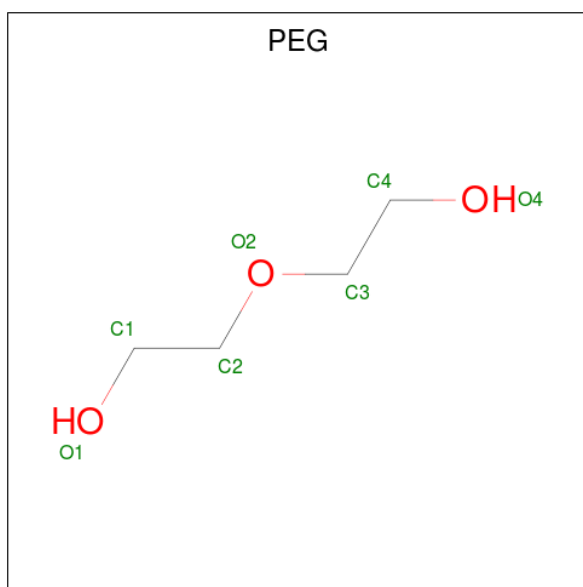
Mol	Chain	Residues	Atoms			ZeroOcc	AltConf
4	H	1	Total	C	O	0	0
			10	6	4		

- Molecule 5 is TETRAETHYLENE GLYCOL (three-letter code: PG4) (formula:  $C_8H_{18}O_5$ ).



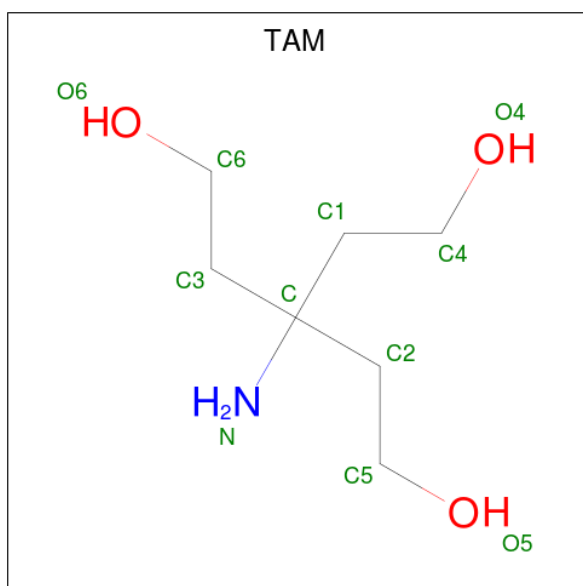
Mol	Chain	Residues	Atoms			ZeroOcc	AltConf
5	H	1	Total	C	O	0	0
			13	8	5		

- Molecule 6 is DI(HYDROXYETHYL)ETHER (three-letter code: PEG) (formula:  $C_4H_{10}O_3$ ).



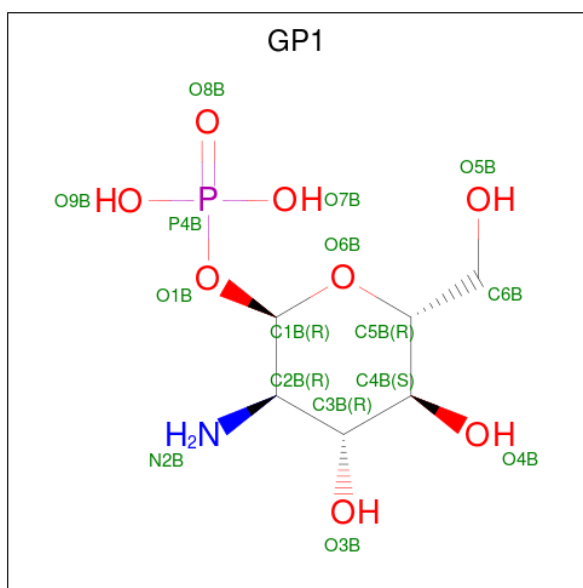
Mol	Chain	Residues	Atoms			ZeroOcc	AltConf
6	H	1	Total	C	O	0	0
			7	4	3		
6	H	1	Total	C	O	0	0
			7	4	3		

- Molecule 7 is TRIS(HYDROXYETHYL)AMINOMETHANE (three-letter code: TAM) (formula:  $C_7H_{17}NO_3$ ).



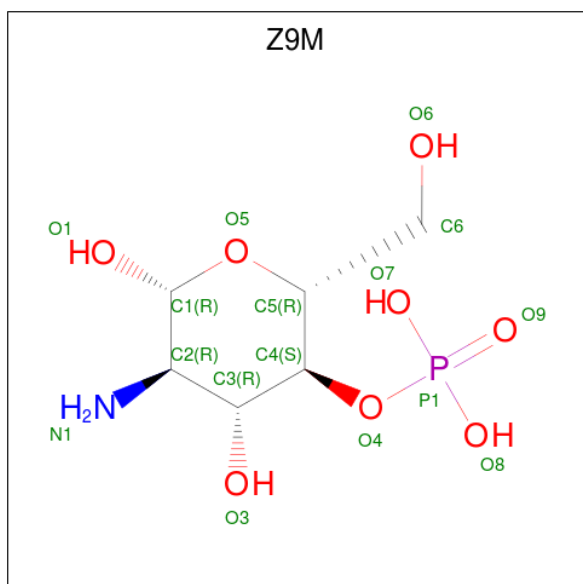
Mol	Chain	Residues	Atoms				ZeroOcc	AltConf
7	H	1	Total	C	N	O	0	0
			11	7	1	3		

- Molecule 8 is GLUCOSAMINE 1-PHOSPHATE (three-letter code: GP1) (formula:  $C_6H_{14}NO_8P$ ).



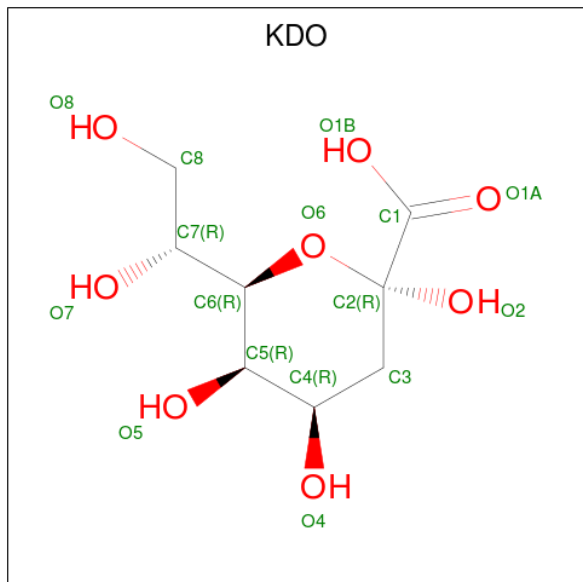
Mol	Chain	Residues	Atoms					ZeroOcc	AltConf
8	H	1	Total	C	N	O	P	0	0
			16	6	1	8	1		

- Molecule 9 is 2-amino-2-deoxy-4-O-phosphono-beta-D-glucopyranose (three-letter code: Z9M) (formula:  $C_6H_{14}NO_8P$ ).



Mol	Chain	Residues	Atoms					ZeroOcc	AltConf
9	H	1	Total	C	N	O	P	0	0
			15	6	1	7	1		

- Molecule 10 is 3-DEOXY-D-MANNO-OCT-2-ULOSONIC ACID (three-letter code: KDO) (formula:  $C_8H_{14}O_8$ ).



Mol	Chain	Residues	Atoms			ZeroOcc	AltConf
10	H	1	Total	C	O	0	0
			15	8	7		
10	H	1	Total	C	O	0	0
			15	8	7		
10	H	1	Total	C	O	0	0
			15	8	7		

- Molecule 11 is CHLORIDE ION (three-letter code: CL) (formula:  $Cl$ ).

Mol	Chain	Residues	Atoms		ZeroOcc	AltConf
11	L	1	Total	Cl	0	0
			1	1		

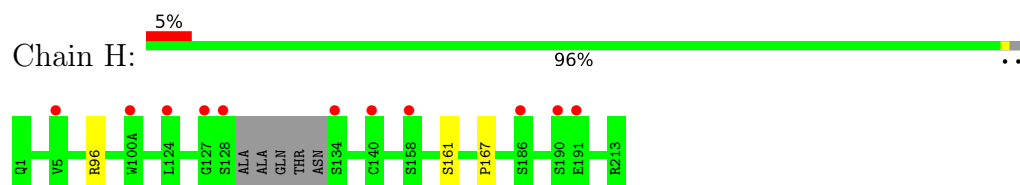
- Molecule 12 is water.

Mol	Chain	Residues	Atoms		ZeroOcc	AltConf
12	H	152	Total	O	0	0
			152	152		
12	L	151	Total	O	0	0
			151	151		

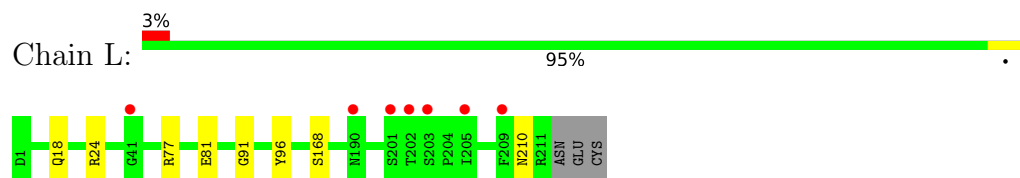
### 3 Residue-property plots [i](#)

These plots are drawn for all protein, RNA and DNA chains in the entry. The first graphic for a chain summarises the proportions of the various outlier classes displayed in the second graphic. The second graphic shows the sequence view annotated by issues in geometry and electron density. Residues are color-coded according to the number of geometric quality criteria for which they contain at least one outlier: green = 0, yellow = 1, orange = 2 and red = 3 or more. A red dot above a residue indicates a poor fit to the electron density ( $RSRZ > 2$ ). Stretches of 2 or more consecutive residues without any outlier are shown as a green connector. Residues present in the sample, but not in the model, are shown in grey.

- Molecule 1: Fab Heavy Chain (IgG1)



- Molecule 2: Fab Light Chain (IgG1 Kappa)





## 4 Data and refinement statistics

Property	Value	Source
Space group	C 2 2 21	Depositor
Cell constants a, b, c, $\alpha$ , $\beta$ , $\gamma$	52.15Å 128.96Å 135.43Å 90.00° 90.00° 90.00°	Depositor
Resolution (Å)	25.00 – 1.99 24.97 – 1.99	Depositor EDS
% Data completeness (in resolution range)	99.2 (25.00-1.99) 99.3 (24.97-1.99)	Depositor EDS
$R_{merge}$	0.12	Depositor
$R_{sym}$	(Not available)	Depositor
$\langle I/\sigma(I) \rangle$ <sup>1</sup>	2.97 (at 1.99Å)	Xtriage
Refinement program	REFMAC 5.8.0155	Depositor
R, $R_{free}$	0.187 , 0.226 0.195 , 0.226	Depositor DCC
$R_{free}$ test set	1571 reflections (4.98%)	wwPDB-VP
Wilson B-factor (Å <sup>2</sup> )	24.5	Xtriage
Anisotropy	0.104	Xtriage
Bulk solvent $k_{sol}$ (e/Å <sup>3</sup> ), $B_{sol}$ (Å <sup>2</sup> )	0.40 , 60.5	EDS
L-test for twinning <sup>2</sup>	$\langle  L  \rangle = 0.50$ , $\langle L^2 \rangle = 0.33$	Xtriage
Estimated twinning fraction	No twinning to report.	Xtriage
$F_o, F_c$ correlation	0.95	EDS
Total number of atoms	3738	wwPDB-VP
Average B, all atoms (Å <sup>2</sup> )	30.0	wwPDB-VP

Xtriage's analysis on translational NCS is as follows: *The largest off-origin peak in the Patterson function is 4.91% of the height of the origin peak. No significant pseudotranslation is detected.*

<sup>1</sup>Intensities estimated from amplitudes.

<sup>2</sup>Theoretical values of  $\langle |L| \rangle$ ,  $\langle L^2 \rangle$  for acentric reflections are 0.5, 0.333 respectively for untwinned datasets, and 0.375, 0.2 for perfectly twinned datasets.

## 5 Model quality [i](#)

### 5.1 Standard geometry [i](#)

Bond lengths and bond angles in the following residue types are not validated in this section: KDO, NAG, CL, Z9M, PG4, FUC, PEG, TAM, PCA, GP1

The Z score for a bond length (or angle) is the number of standard deviations the observed value is removed from the expected value. A bond length (or angle) with  $|Z| > 5$  is considered an outlier worth inspection. RMSZ is the root-mean-square of all Z scores of the bond lengths (or angles).

Mol	Chain	Bond lengths		Bond angles	
		RMSZ	# Z  >5	RMSZ	# Z  >5
1	H	0.45	0/1652	0.66	0/2265
2	L	0.49	0/1722	0.69	0/2337
All	All	0.47	0/3374	0.67	0/4602

There are no bond length outliers.

There are no bond angle outliers.

There are no chirality outliers.

There are no planarity outliers.

### 5.2 Too-close contacts [i](#)

In the following table, the Non-H and H(model) columns list the number of non-hydrogen atoms and hydrogen atoms in the chain respectively. The H(added) column lists the number of hydrogen atoms added and optimized by MolProbity. The Clashes column lists the number of clashes within the asymmetric unit, whereas Symm-Clashes lists symmetry related clashes.

Mol	Chain	Non-H	H(model)	H(added)	Clashes	Symm-Clashes
1	H	1614	0	1582	2	0
2	L	1682	0	1623	2	0
3	H	14	0	12	1	0
4	H	10	0	10	1	0
5	H	13	0	18	0	0
6	H	14	0	20	0	0
7	H	11	0	17	2	0
8	H	16	0	11	0	0
9	H	15	0	9	0	0
10	H	45	0	34	0	0
11	L	1	0	0	0	0

*Continued on next page...*

*Continued from previous page...*

Mol	Chain	Non-H	H(model)	H(added)	Clashes	Symm-Clashes
12	H	152	0	0	0	0
12	L	151	0	0	0	0
All	All	3738	0	3336	5	0

The all-atom clashscore is defined as the number of clashes found per 1000 atoms (including hydrogen atoms). The all-atom clashscore for this structure is 1.

All (5) close contacts within the same asymmetric unit are listed below, sorted by their clash magnitude.

Atom-1	Atom-2	Interatomic distance (Å)	Clash overlap (Å)
1:H:167:PRO:HA	7:H:406:TAM:H32	1.89	0.55
3:H:401:NAG:H62	4:H:402:FUC:C5	2.44	0.47
7:H:406:TAM:H62	7:H:406:TAM:O4	2.18	0.42
1:H:96:ARG:HD2	2:L:91:GLY:O	2.22	0.40
2:L:91:GLY:HA2	2:L:96:TYR:CD1	2.57	0.40

There are no symmetry-related clashes.

## 5.3 Torsion angles [i](#)

### 5.3.1 Protein backbone [i](#)

In the following table, the Percentiles column shows the percent Ramachandran outliers of the chain as a percentile score with respect to all X-ray entries followed by that with respect to entries of similar resolution.

The Analysed column shows the number of residues for which the backbone conformation was analysed, and the total number of residues.

Mol	Chain	Analysed	Favoured	Allowed	Outliers	Percentiles	
1	H	209/218 (96%)	205 (98%)	4 (2%)	0	100	100
2	L	214/219 (98%)	208 (97%)	6 (3%)	0	100	100
All	All	423/437 (97%)	413 (98%)	10 (2%)	0	100	100

There are no Ramachandran outliers to report.

### 5.3.2 Protein sidechains ⓘ

In the following table, the Percentiles column shows the percent sidechain outliers of the chain as a percentile score with respect to all X-ray entries followed by that with respect to entries of similar resolution.

The Analysed column shows the number of residues for which the sidechain conformation was analysed, and the total number of residues.

Mol	Chain	Analysed	Rotameric	Outliers	Percentiles	
1	H	186/189 (98%)	185 (100%)	1 (0%)	90	93
2	L	193/196 (98%)	187 (97%)	6 (3%)	43	42
All	All	379/385 (98%)	372 (98%)	7 (2%)	62	66

5 of 7 residues with a non-rotameric sidechain are listed below:

Mol	Chain	Res	Type
2	L	77	ARG
2	L	210	ASN
2	L	81	GLU
2	L	18	GLN
2	L	168	SER

Some sidechains can be flipped to improve hydrogen bonding and reduce clashes. All (2) such sidechains are listed below:

Mol	Chain	Res	Type
1	H	77	GLN
2	L	42	GLN

### 5.3.3 RNA ⓘ

There are no RNA molecules in this entry.

## 5.4 Non-standard residues in protein, DNA, RNA chains ⓘ

1 non-standard protein/DNA/RNA residue is modelled in this entry.

In the following table, the Counts columns list the number of bonds (or angles) for which Mogul statistics could be retrieved, the number of bonds (or angles) that are observed in the model and the number of bonds (or angles) that are defined in the Chemical Component Dictionary. The Link column lists molecule types, if any, to which the group is linked. The Z score for a bond length (or angle) is the number of standard deviations the observed value is removed from the

expected value. A bond length (or angle) with  $|Z| > 2$  is considered an outlier worth inspection. RMSZ is the root-mean-square of all Z scores of the bond lengths (or angles).

Mol	Type	Chain	Res	Link	Bond lengths			Bond angles		
					Counts	RMSZ	$\# Z  > 2$	Counts	RMSZ	$\# Z  > 2$
1	PCA	H	1	1	8,8,9	0.48	0	9,10,12	1.33	2 (22%)

In the following table, the Chirals column lists the number of chiral outliers, the number of chiral centers analysed, the number of these observed in the model and the number defined in the Chemical Component Dictionary. Similar counts are reported in the Torsion and Rings columns. '-' means no outliers of that kind were identified.

Mol	Type	Chain	Res	Link	Chirals	Torsions	Rings
1	PCA	H	1	1	-	0/0/11/13	0/1/1/1

There are no bond length outliers.

All (2) bond angle outliers are listed below:

Mol	Chain	Res	Type	Atoms	Z	Observed(°)	Ideal(°)
1	H	1	PCA	CB-CA-C	-2.66	109.05	112.70
1	H	1	PCA	OE-CD-CG	-2.08	123.10	126.81

There are no chirality outliers.

There are no torsion outliers.

There are no ring outliers.

No monomer is involved in short contacts.

## 5.5 Carbohydrates [i](#)

There are no carbohydrates in this entry.

## 5.6 Ligand geometry [i](#)

Of 12 ligands modelled in this entry, 1 is monoatomic - leaving 11 for Mogul analysis.

In the following table, the Counts columns list the number of bonds (or angles) for which Mogul statistics could be retrieved, the number of bonds (or angles) that are observed in the model and the number of bonds (or angles) that are defined in the Chemical Component Dictionary. The Link column lists molecule types, if any, to which the group is linked. The Z score for a bond length (or angle) is the number of standard deviations the observed value is removed from the expected value. A bond length (or angle) with  $|Z| > 2$  is considered an outlier worth inspection. RMSZ is the root-mean-square of all Z scores of the bond lengths (or angles).

Mol	Type	Chain	Res	Link	Bond lengths			Bond angles		
					Counts	RMSZ	# Z  > 2	Counts	RMSZ	# Z  > 2
3	NAG	H	401	1,4	14,14,15	0.42	0	17,19,21	0.86	0
4	FUC	H	402	3	9,10,11	0.30	0	13,14,16	0.61	0
5	PG4	H	403	-	12,12,12	0.41	0	11,11,11	0.34	0
6	PEG	H	404	-	6,6,6	0.37	0	5,5,5	0.17	0
6	PEG	H	405	-	6,6,6	0.47	0	5,5,5	0.34	0
7	TAM	H	406	-	7,10,10	0.75	0	9,12,12	1.58	3 (33%)
8	GP1	H	407	9	15,16,16	1.27	2 (13%)	23,24,24	1.15	2 (8%)
9	Z9M	H	408	8,10	15,15,16	1.09	2 (13%)	18,22,24	0.96	0
10	KDO	H	409	9,10	12,15,16	1.06	0	15,21,24	1.79	2 (13%)
10	KDO	H	410	10	12,15,16	0.87	0	15,21,24	1.05	1 (6%)
10	KDO	H	411	10	12,15,16	1.07	1 (8%)	15,21,24	1.10	1 (6%)

In the following table, the Chirals column lists the number of chiral outliers, the number of chiral centers analysed, the number of these observed in the model and the number defined in the Chemical Component Dictionary. Similar counts are reported in the Torsion and Rings columns. '-' means no outliers of that kind were identified.

Mol	Type	Chain	Res	Link	Chirals	Torsions	Rings
3	NAG	H	401	1,4	-	1/6/23/26	0/1/1/1
4	FUC	H	402	3	-	-	0/1/1/1
5	PG4	H	403	-	-	5/10/10/10	-
6	PEG	H	404	-	-	1/4/4/4	-
6	PEG	H	405	-	-	1/4/4/4	-
7	TAM	H	406	-	-	7/12/12/12	-
8	GP1	H	407	9	-	0/6/27/27	0/1/1/1
9	Z9M	H	408	8,10	-	1/7/24/27	0/1/1/1
10	KDO	H	409	9,10	-	2/6/26/30	0/1/1/1
10	KDO	H	410	10	-	1/6/26/30	0/1/1/1
10	KDO	H	411	10	-	0/6/26/30	0/1/1/1

All (5) bond length outliers are listed below:

Mol	Chain	Res	Type	Atoms	Z	Observed(Å)	Ideal(Å)
8	H	407	GP1	P4B-O1B	2.72	1.64	1.59
10	H	411	KDO	C3-C2	-2.31	1.48	1.52
9	H	408	Z9M	P1-O4	2.26	1.63	1.59
8	H	407	GP1	O6B-C1B	2.06	1.47	1.41
9	H	408	Z9M	P1-O8	-2.06	1.46	1.54

The worst 5 of 9 bond angle outliers are listed below:

Mol	Chain	Res	Type	Atoms	Z	Observed(°)	Ideal(°)
10	H	409	KDO	O8-C8-C7	-5.47	99.13	111.09
8	H	407	GP1	O6B-C5B-C6B	3.16	114.31	106.43
7	H	406	TAM	O6-C6-C3	-2.93	103.30	111.30
10	H	410	KDO	C6-O6-C2	2.80	117.34	111.34
8	H	407	GP1	O9B-P4B-O8B	2.48	120.32	110.53

There are no chirality outliers.

5 of 19 torsion outliers are listed below:

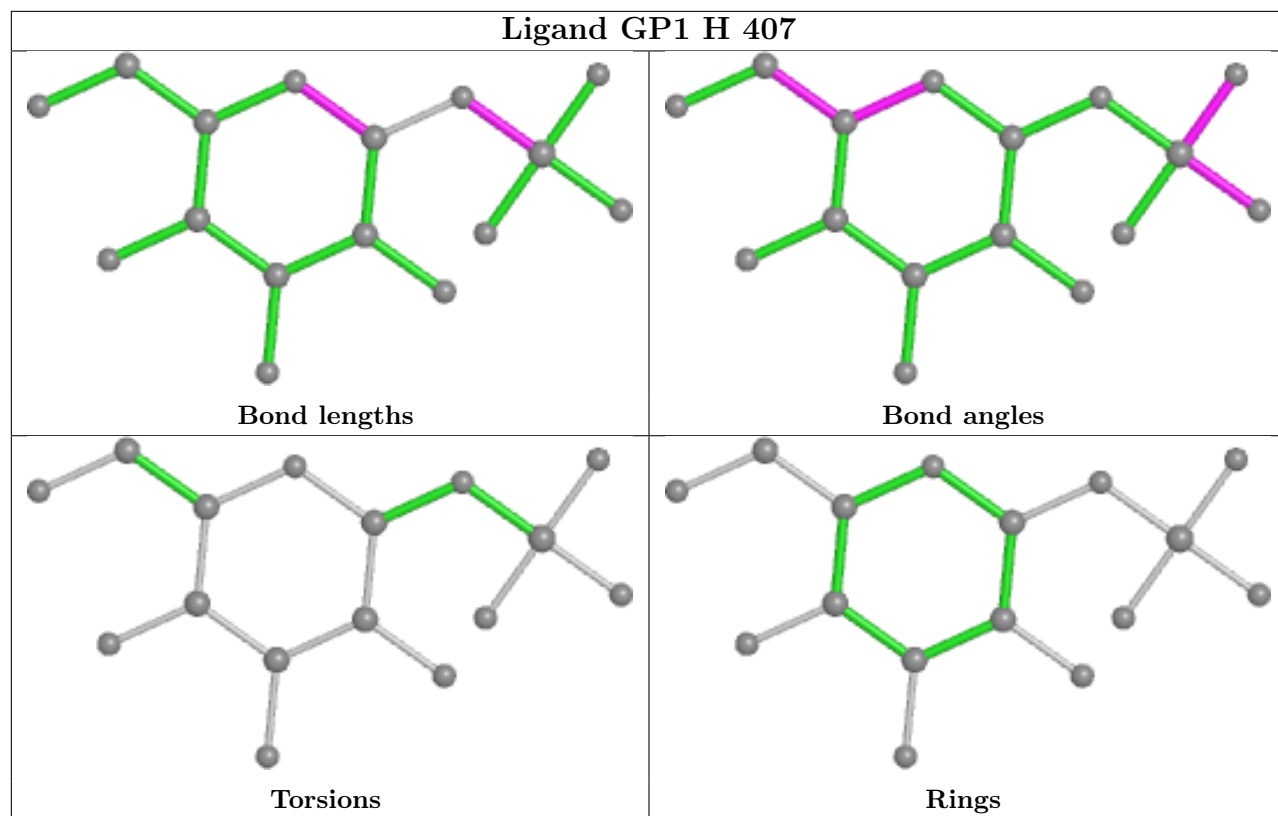
Mol	Chain	Res	Type	Atoms
7	H	406	TAM	N-C-C1-C4
7	H	406	TAM	C1-C-C3-C6
7	H	406	TAM	C2-C-C3-C6
7	H	406	TAM	N-C-C3-C6
10	H	409	KDO	O7-C7-C8-O8

There are no ring outliers.

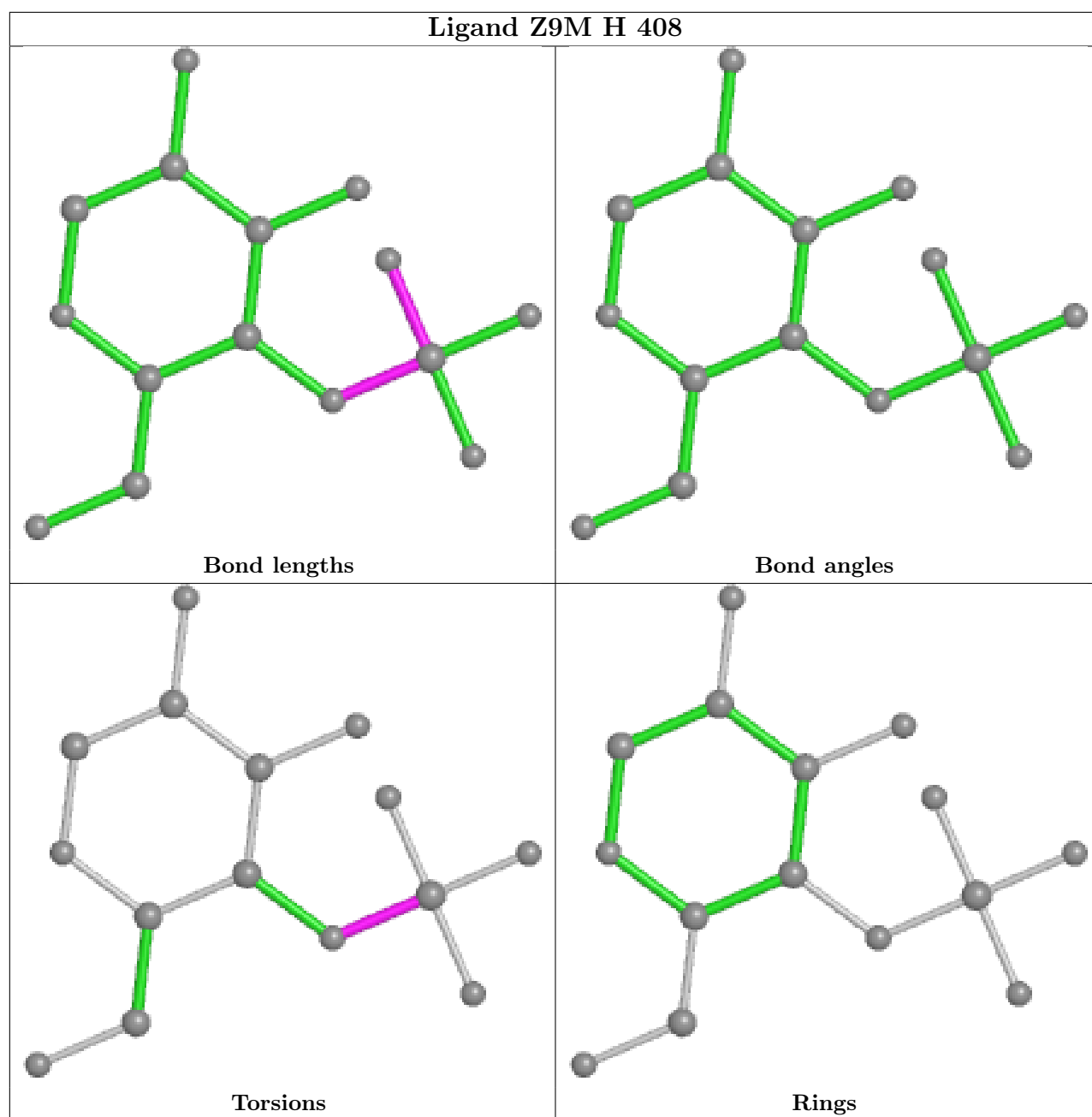
3 monomers are involved in 3 short contacts:

Mol	Chain	Res	Type	Clashes	Symm-Clashes
3	H	401	NAG	1	0
4	H	402	FUC	1	0
7	H	406	TAM	2	0

The following is a two-dimensional graphical depiction of Mogul quality analysis of bond lengths, bond angles, torsion angles, and ring geometry for all instances of the Ligand of Interest. In addition, ligands with molecular weight > 250 and outliers as shown on the validation Tables will also be included. For torsion angles, if less than 5% of the Mogul distribution of torsion angles is within 10 degrees of the torsion angle in question, then that torsion angle is considered an outlier. Any bond that is central to one or more torsion angles identified as an outlier by Mogul will be highlighted in the graph. For rings, the root-mean-square deviation (RMSD) between the ring in question and similar rings identified by Mogul is calculated over all ring torsion angles. If the average RMSD is greater than 60 degrees and the minimal RMSD between the ring in question and any Mogul-identified rings is also greater than 60 degrees, then that ring is considered an outlier. The outliers are highlighted in purple. The color gray indicates Mogul did not find sufficient equivalents in the CSD to analyse the geometry.







## 5.7 Other polymers [i](#)

There are no such residues in this entry.

## 5.8 Polymer linkage issues [i](#)

There are no chain breaks in this entry.

## 6 Fit of model and data [i](#)

### 6.1 Protein, DNA and RNA chains [i](#)

In the following table, the column labelled ‘#RSRZ > 2’ contains the number (and percentage) of RSRZ outliers, followed by percent RSRZ outliers for the chain as percentile scores relative to all X-ray entries and entries of similar resolution. The OWAB column contains the minimum, median, 95<sup>th</sup> percentile and maximum values of the occupancy-weighted average B-factor per residue. The column labelled ‘Q < 0.9’ lists the number of (and percentage) of residues with an average occupancy less than 0.9.

Mol	Chain	Analysed	<RSRZ>	#RSRZ>2	OWAB(Å <sup>2</sup> )	Q<0.9
1	H	212/218 (97%)	0.44	11 (5%) 27 27	15, 28, 53, 69	0
2	L	216/219 (98%)	0.27	7 (3%) 47 47	14, 26, 53, 64	0
All	All	428/437 (97%)	0.35	18 (4%) 36 35	14, 27, 53, 69	0

The worst 5 of 18 RSRZ outliers are listed below:

Mol	Chain	Res	Type	RSRZ
2	L	202	THR	5.0
1	H	128	SER	4.8
2	L	201	SER	4.3
1	H	191	GLU	3.6
2	L	203	SER	3.2

### 6.2 Non-standard residues in protein, DNA, RNA chains [i](#)

In the following table, the Atoms column lists the number of modelled atoms in the group and the number defined in the chemical component dictionary. The B-factors column lists the minimum, median, 95<sup>th</sup> percentile and maximum values of B factors of atoms in the group. The column labelled ‘Q < 0.9’ lists the number of atoms with occupancy less than 0.9.

Mol	Type	Chain	Res	Atoms	RSCC	RSR	B-factors(Å <sup>2</sup> )	Q<0.9
1	PCA	H	1	8/9	0.81	0.28	49,54,56,57	0

### 6.3 Carbohydrates [i](#)

There are no carbohydrates in this entry.

## 6.4 Ligands

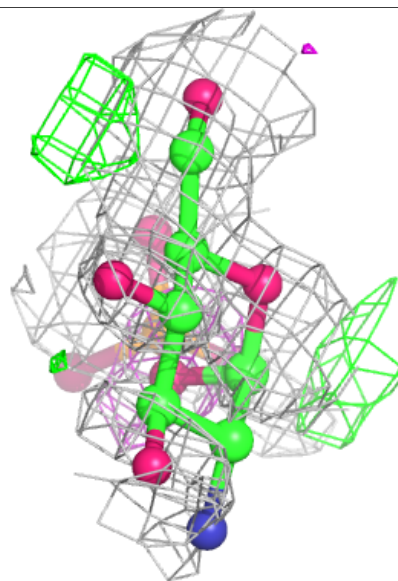
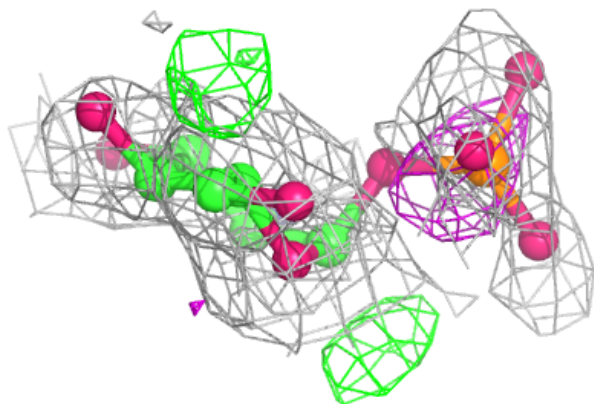
In the following table, the Atoms column lists the number of modelled atoms in the group and the number defined in the chemical component dictionary. The B-factors column lists the minimum, median, 95<sup>th</sup> percentile and maximum values of B factors of atoms in the group. The column labelled 'Q< 0.9' lists the number of atoms with occupancy less than 0.9.

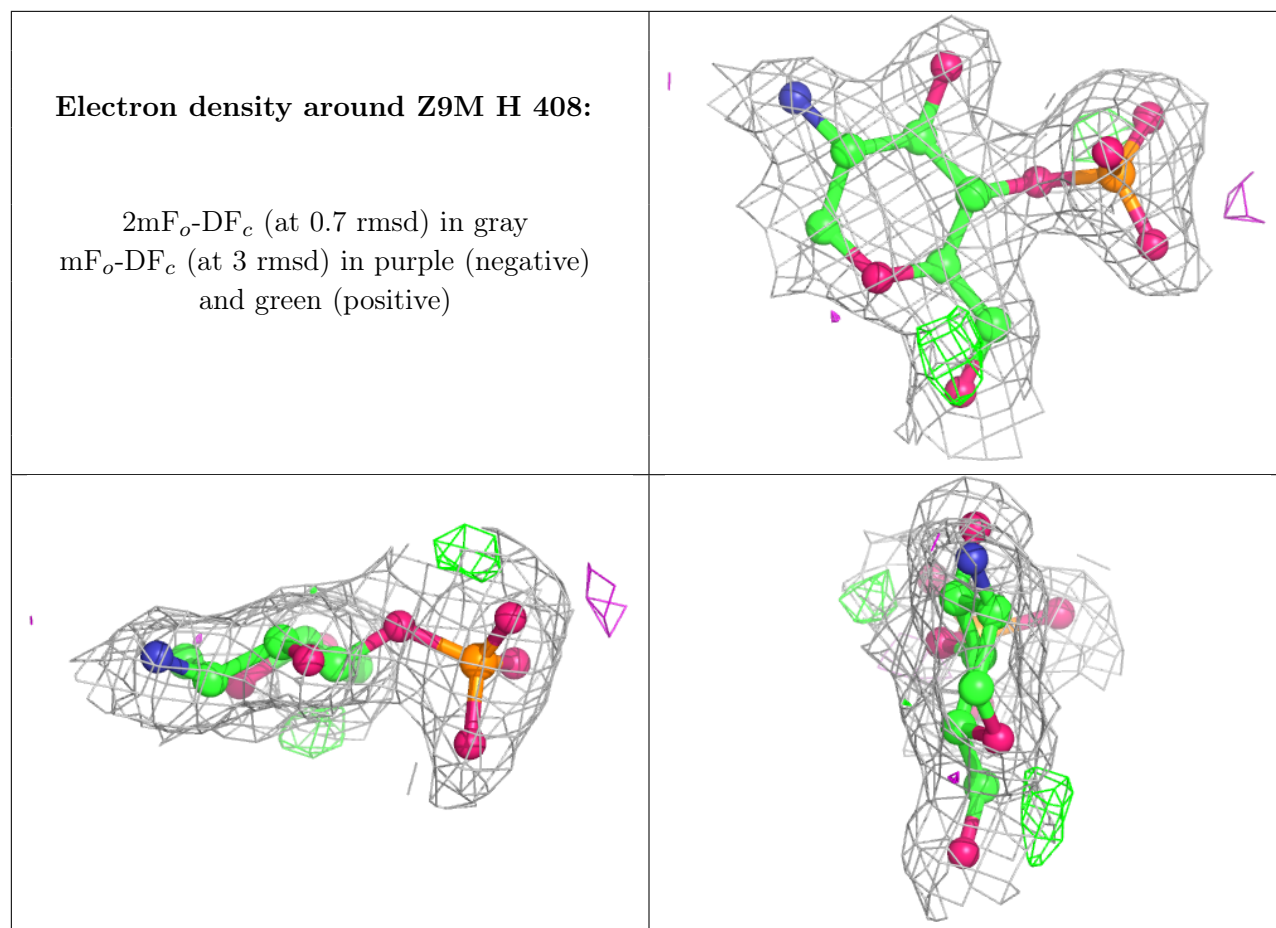
Mol	Type	Chain	Res	Atoms	RSCC	RSR	B-factors(Å <sup>2</sup> )	Q<0.9
8	GP1	H	407	16/16	0.64	0.33	33,60,79,82	0
7	TAM	H	406	11/11	0.77	0.21	37,42,45,45	0
6	PEG	H	405	7/7	0.79	0.18	52,54,55,56	0
4	FUC	H	402	10/11	0.80	0.24	37,38,38,39	0
5	PG4	H	403	13/13	0.88	0.12	44,45,49,51	0
3	NAG	H	401	14/15	0.91	0.14	35,38,39,41	0
6	PEG	H	404	7/7	0.93	0.15	35,38,40,41	0
10	KDO	H	410	15/16	0.95	0.09	18,19,20,20	0
10	KDO	H	409	15/16	0.95	0.10	19,20,27,30	0
9	Z9M	H	408	15/16	0.96	0.09	21,26,29,29	0
10	KDO	H	411	15/16	0.96	0.08	20,21,23,23	0
11	CL	L	301	1/1	0.97	0.09	30,30,30,30	1

The following is a graphical depiction of the model fit to experimental electron density of all instances of the Ligand of Interest. In addition, ligands with molecular weight > 250 and outliers as shown on the geometry validation Tables will also be included. Each fit is shown from different orientation to approximate a three-dimensional view.

**Electron density around GP1 H 407:**

$2mF_o-DF_c$  (at 0.7 rmsd) in gray  
 $mF_o-DF_c$  (at 3 rmsd) in purple (negative)  
and green (positive)





## 6.5 Other polymers [i](#)

There are no such residues in this entry.