



Full wwPDB X-ray Structure Validation Report ⓘ

Sep 2, 2019 – 11:23 AM EDT

PDB ID : 2C9A
Title : Crystal structure of the MAM-Ig module of receptor protein tyrosine phosphatase mu
Authors : Aricescu, A.R.; Hon, W.C.; Siebold, C.; Lu, W.; Van Der Merwe, P.A.; Jones, E.Y.
Deposited on : 2005-12-09
Resolution : 2.70 Å(reported)

This is a Full wwPDB X-ray Structure Validation Report for a publicly released PDB entry.

We welcome your comments at validation@mail.wwpdb.org

A user guide is available at

<https://www.wwpdb.org/validation/2017/XrayValidationReportHelp>

with specific help available everywhere you see the ⓘ symbol.

The following versions of software and data (see [references ⓘ](#)) were used in the production of this report:

MolProbity : 4.02b-467
Mogul : 1.8.0 (224370), CSD as540be (2019)
Xtriage (Phenix) : 1.13
EDS : 2.4
Percentile statistics : 20171227.v01 (using entries in the PDB archive December 27th 2017)
Refmac : 5.8.0158
CCP4 : 7.0 (Gargrove)
Ideal geometry (proteins) : Engh & Huber (2001)
Ideal geometry (DNA, RNA) : Parkinson et al. (1996)
Validation Pipeline (wwPDB-VP) : 2.4

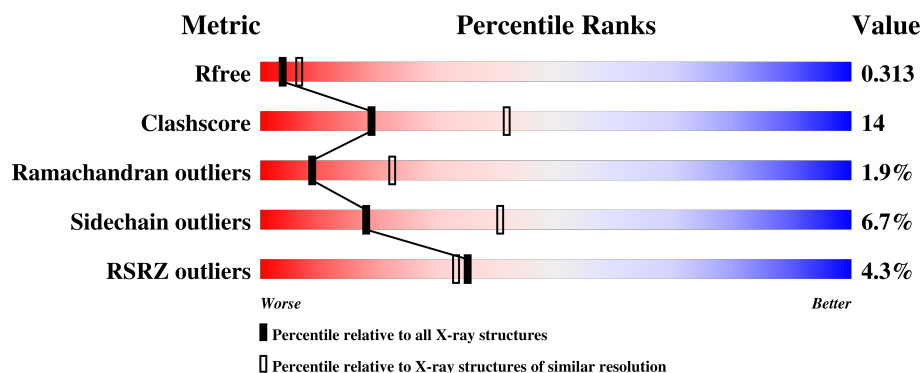
1 Overall quality at a glance ⓘ

The following experimental techniques were used to determine the structure:

X-RAY DIFFRACTION

The reported resolution of this entry is 2.70 Å.

Percentile scores (ranging between 0-100) for global validation metrics of the entry are shown in the following graphic. The table shows the number of entries on which the scores are based.



Metric	Whole archive (#Entries)	Similar resolution (#Entries, resolution range(Å))
R_{free}	111664	2449 (2.70-2.70)
Clashscore	122126	2756 (2.70-2.70)
Ramachandran outliers	120053	2716 (2.70-2.70)
Sidechain outliers	120020	2716 (2.70-2.70)
RSRZ outliers	108989	2376 (2.70-2.70)

The table below summarises the geometric issues observed across the polymeric chains and their fit to the electron density. The red, orange, yellow and green segments on the lower bar indicate the fraction of residues that contain outliers for ≥ 3 , 2, 1 and 0 types of geometric quality criteria. A grey segment represents the fraction of residues that are not modelled. The numeric value for each fraction is indicated below the corresponding segment, with a dot representing fractions $\leq 5\%$. The upper red bar (where present) indicates the fraction of residues that have poor fit to the electron density. The numeric value is given above the bar.

Mol	Chain	Length	Quality of chain
1	A	259	<div> <div>4%</div> <div>67%</div> <div>31%</div> <div>.</div> </div>

The following table lists non-polymeric compounds, carbohydrate monomers and non-standard residues in protein, DNA, RNA chains that are outliers for geometric or electron-density-fit criteria:

Mol	Type	Chain	Res	Chirality	Geometry	Clashes	Electron density
2	NAG	A	1285	X	-	-	-

Continued on next page...

Continued from previous page...

Mol	Type	Chain	Res	Chirality	Geometry	Clashes	Electron density
4	FUC	A	1286	X	-	-	-

2 Entry composition [i](#)

There are 6 unique types of molecules in this entry. The entry contains 2208 atoms, of which 0 are hydrogens and 0 are deuteriums.

In the tables below, the ZeroOcc column contains the number of atoms modelled with zero occupancy, the AltConf column contains the number of residues with at least one atom in alternate conformation and the Trace column contains the number of residues modelled with at most 2 atoms.

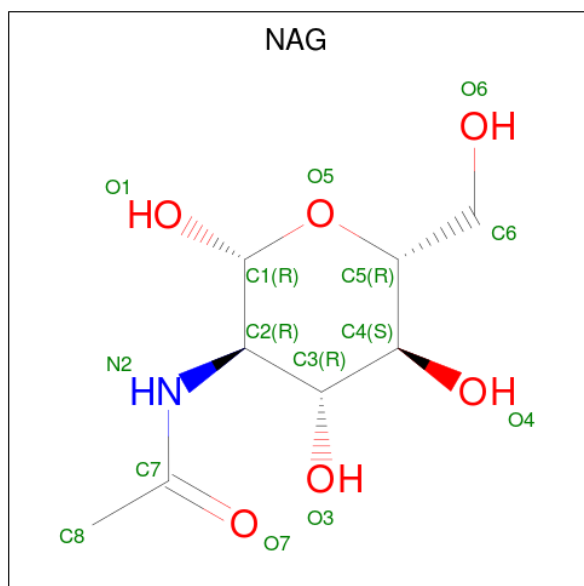
- Molecule 1 is a protein called RECEPTOR-TYPE TYROSINE-PROTEIN PHOSPHATASE MU.

Mol	Chain	Residues	Atoms						ZeroOcc	AltConf	Trace
1	A	259	Total	C	N	O	S	Se	0	0	0
			2037	1290	356	382	6	3			

There is a discrepancy between the modelled and reference sequences:

Chain	Residue	Modelled	Actual	Comment	Reference
A	68	PHE	LEU	conflict	UNP P28827

- Molecule 2 is N-ACETYL-D-GLUCOSAMINE (three-letter code: NAG) (formula: C₈H₁₅NO₆).



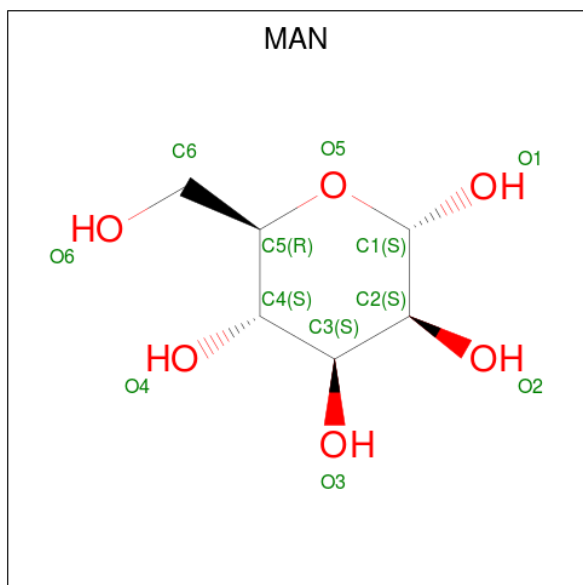
Mol	Chain	Residues	Atoms				ZeroOcc	AltConf
2	A	1	Total	C	N	O	0	0
			14	8	1	5		
2	A	1	Total	C	N	O	0	0
			14	8	1	5		

Continued on next page...

Continued from previous page...

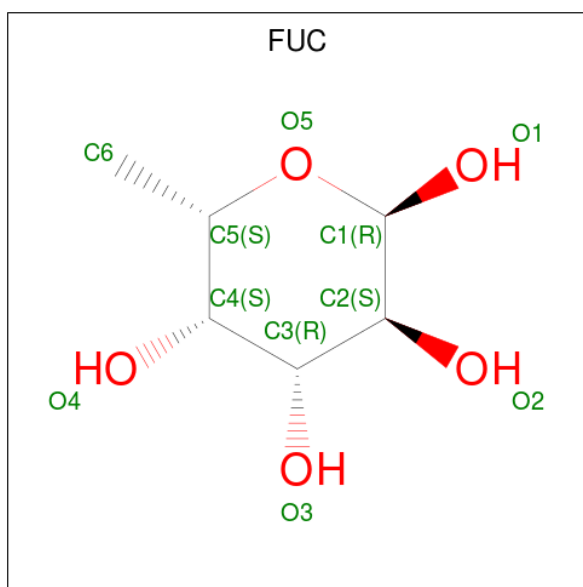
Mol	Chain	Residues	Atoms				ZeroOcc	AltConf
2	A	1	Total	C	N	O	0	0
			14	8	1	5		
2	A	1	Total	C	N	O	0	0
			14	8	1	5		
2	A	1	Total	C	N	O	0	0
			14	8	1	5		

- Molecule 3 is ALPHA-D-MANNOSE (three-letter code: MAN) (formula: $C_6H_{12}O_6$).



Mol	Chain	Residues	Atoms			ZeroOcc	AltConf
3	A	1	Total	C	O	0	0
			11	6	5		
3	A	1	Total	C	O	0	0
			11	6	5		

- Molecule 4 is ALPHA-L-FUCOSE (three-letter code: FUC) (formula: $C_6H_{12}O_5$).



Mol	Chain	Residues	Atoms			ZeroOcc	AltConf
4	A	1	Total	C	O	0	0
			10	6	4		

- Molecule 5 is SODIUM ION (three-letter code: NA) (formula: Na).

Mol	Chain	Residues	Atoms		ZeroOcc	AltConf
5	A	2	Total	Na	0	0
			2	2		

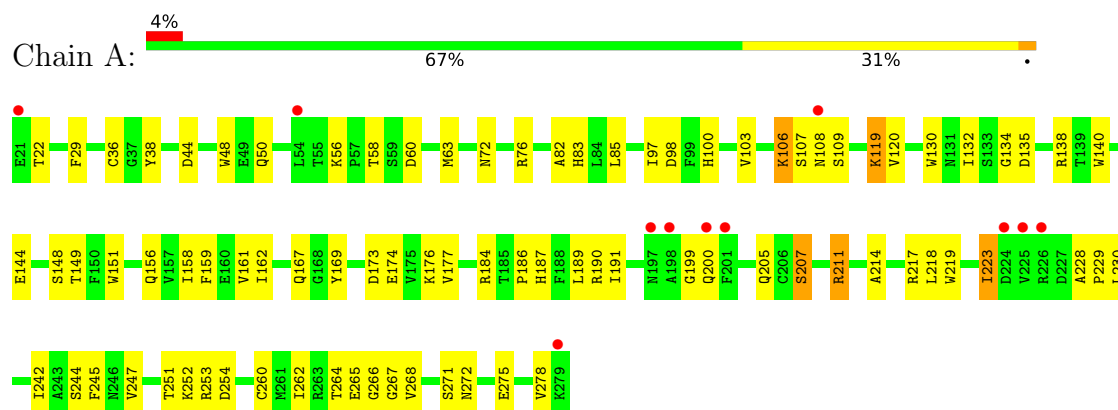
- Molecule 6 is water.

Mol	Chain	Residues	Atoms		ZeroOcc	AltConf
6	A	67	Total	O	0	0
			67	67		

3 Residue-property plots

These plots are drawn for all protein, RNA and DNA chains in the entry. The first graphic for a chain summarises the proportions of the various outlier classes displayed in the second graphic. The second graphic shows the sequence view annotated by issues in geometry and electron density. Residues are color-coded according to the number of geometric quality criteria for which they contain at least one outlier: green = 0, yellow = 1, orange = 2 and red = 3 or more. A red dot above a residue indicates a poor fit to the electron density ($RSRZ > 2$). Stretches of 2 or more consecutive residues without any outlier are shown as a green connector. Residues present in the sample, but not in the model, are shown in grey.

• Molecule 1: RECEPTOR-TYPE TYROSINE-PROTEIN PHOSPHATASE MU



4 Data and refinement statistics

Property	Value	Source
Space group	I 2 2 2	Depositor
Cell constants a, b, c, α , β , γ	58.86Å 97.74Å 134.36Å 90.00° 90.00° 90.00°	Depositor
Resolution (Å)	30.00 – 2.70 29.43 – 2.69	Depositor EDS
% Data completeness (in resolution range)	100.0 (30.00-2.70) 99.9 (29.43-2.69)	Depositor EDS
R_{merge}	0.14	Depositor
R_{sym}	(Not available)	Depositor
$\langle I/\sigma(I) \rangle$ ¹	2.96 (at 2.68Å)	Xtriage
Refinement program	REFMAC 5.2.0019	Depositor
R, R_{free}	0.222 , 0.275 0.256 , 0.313	Depositor DCC
R_{free} test set	534 reflections (4.83%)	wwPDB-VP
Wilson B-factor (Å ²)	43.3	Xtriage
Anisotropy	0.907	Xtriage
Bulk solvent k_{sol} (e/Å ³), B_{sol} (Å ²)	0.29 , 33.3	EDS
L-test for twinning ²	$\langle L \rangle = 0.48$, $\langle L^2 \rangle = 0.31$	Xtriage
Estimated twinning fraction	No twinning to report.	Xtriage
F_o, F_c correlation	0.90	EDS
Total number of atoms	2208	wwPDB-VP
Average B, all atoms (Å ²)	47.0	wwPDB-VP

Xtriage's analysis on translational NCS is as follows: *The largest off-origin peak in the Patterson function is 5.83% of the height of the origin peak. No significant pseudotranslation is detected.*

¹Intensities estimated from amplitudes.

²Theoretical values of $\langle |L| \rangle$, $\langle L^2 \rangle$ for acentric reflections are 0.5, 0.333 respectively for untwinned datasets, and 0.375, 0.2 for perfectly twinned datasets.

5 Model quality

5.1 Standard geometry

Bond lengths and bond angles in the following residue types are not validated in this section: FUC, NA, NAG, MAN

The Z score for a bond length (or angle) is the number of standard deviations the observed value is removed from the expected value. A bond length (or angle) with $|Z| > 5$ is considered an outlier worth inspection. RMSZ is the root-mean-square of all Z scores of the bond lengths (or angles).

Mol	Chain	Bond lengths		Bond angles	
		RMSZ	$\# Z > 5$	RMSZ	$\# Z > 5$
1	A	0.62	0/2088	0.70	0/2836

There are no bond length outliers.

There are no bond angle outliers.

There are no chirality outliers.

There are no planarity outliers.

5.2 Too-close contacts

In the following table, the Non-H and H(model) columns list the number of non-hydrogen atoms and hydrogen atoms in the chain respectively. The H(added) column lists the number of hydrogen atoms added and optimized by MolProbity. The Clashes column lists the number of clashes within the asymmetric unit, whereas Symm-Clashes lists symmetry related clashes.

Mol	Chain	Non-H	H(model)	H(added)	Clashes	Symm-Clashes
1	A	2037	0	1960	58	0
2	A	70	0	61	6	0
3	A	22	0	19	0	0
4	A	10	0	10	1	0
5	A	2	0	0	0	0
6	A	67	0	0	7	0
All	All	2208	0	2050	59	0

The all-atom clashscore is defined as the number of clashes found per 1000 atoms (including hydrogen atoms). The all-atom clashscore for this structure is 14.

All (59) close contacts within the same asymmetric unit are listed below, sorted by their clash magnitude.

Atom-1	Atom-2	Interatomic distance (Å)	Clash overlap (Å)
1:A:191:ILE:H	1:A:272:ASN:HD21	1.13	0.91
1:A:63:MSE:HE3	2:A:1280:NAG:H82	1.63	0.80
1:A:140:TRP:CH2	1:A:173:ASP:HB3	2.21	0.75
1:A:211:ARG:HB3	6:A:2059:HOH:O	1.89	0.72
1:A:85:LEU:HD22	1:A:158:ILE:HG12	1.72	0.71
1:A:63:MSE:CE	2:A:1280:NAG:H82	2.20	0.71
2:A:1285:NAG:H62	4:A:1286:FUC:H61	1.76	0.68
1:A:119:LYS:HB3	1:A:119:LYS:NZ	2.11	0.66
1:A:151:TRP:HZ2	2:A:1285:NAG:H83	1.59	0.66
1:A:29:PHE:HB3	1:A:50:GLN:HE21	1.61	0.66
1:A:120:VAL:HG23	1:A:149:THR:HG21	1.80	0.64
1:A:130:TRP:HB2	1:A:268:VAL:HG11	1.80	0.63
1:A:151:TRP:HZ2	2:A:1285:NAG:C8	2.12	0.62
1:A:97:ILE:HG12	1:A:177:VAL:HG22	1.83	0.58
1:A:275:GLU:HB3	6:A:2067:HOH:O	2.04	0.58
1:A:191:ILE:N	1:A:272:ASN:HD21	1.95	0.57
1:A:29:PHE:HB3	1:A:50:GLN:NE2	2.18	0.57
1:A:58:THR:HG21	1:A:63:MSE:HG2	1.85	0.57
1:A:48:TRP:CH2	1:A:161:VAL:HG23	2.39	0.56
1:A:251:THR:O	1:A:254:ASP:HB2	2.06	0.56
1:A:85:LEU:CD2	1:A:158:ILE:HG23	2.37	0.55
1:A:186:PRO:HG2	1:A:262:ILE:HG21	1.88	0.55
1:A:44:ASP:OD2	1:A:82:ALA:HA	2.09	0.53
1:A:218:LEU:HG	1:A:262:ILE:HG13	1.91	0.52
1:A:72:ASN:O	1:A:76:ARG:NH1	2.43	0.52
1:A:103:VAL:HG11	1:A:134:GLY:O	2.09	0.52
1:A:151:TRP:CZ2	2:A:1285:NAG:H83	2.42	0.52
1:A:187:HIS:HB3	6:A:2052:HOH:O	2.09	0.51
1:A:108:ASN:HA	6:A:2025:HOH:O	2.11	0.51
1:A:252:LYS:C	1:A:254:ASP:H	2.13	0.51
1:A:174:GLU:OE2	1:A:176:LYS:HD3	2.12	0.50
1:A:119:LYS:HB3	1:A:119:LYS:HZ2	1.77	0.49
1:A:260:CYS:HB2	1:A:271:SER:HB3	1.93	0.49
1:A:107:SER:C	1:A:109:SER:H	2.16	0.49
1:A:119:LYS:HG3	6:A:2030:HOH:O	2.12	0.49
1:A:205:GLN:NE2	1:A:244:SER:HB3	2.28	0.48
1:A:106:LYS:HD2	1:A:167:GLN:NE2	2.28	0.48
1:A:85:LEU:HD23	1:A:158:ILE:HG23	1.95	0.47
1:A:48:TRP:CZ2	1:A:161:VAL:HG23	2.50	0.46
1:A:119:LYS:CB	1:A:119:LYS:NZ	2.76	0.46
1:A:211:ARG:CB	6:A:2059:HOH:O	2.56	0.46
1:A:190:ARG:HA	1:A:272:ASN:ND2	2.31	0.45

Continued on next page...

Continued from previous page...

Atom-1	Atom-2	Interatomic distance (Å)	Clash overlap (Å)
1:A:217:ARG:HG2	1:A:219:TRP:CE3	2.50	0.45
1:A:230:LEU:HA	1:A:245:PHE:CD1	2.52	0.45
1:A:36:CYS:HB2	1:A:38:TYR:CD1	2.52	0.44
1:A:132:ILE:HD12	1:A:134:GLY:HA2	1.99	0.44
1:A:60:ASP:HB3	1:A:63:MSE:HB2	2.00	0.43
1:A:264:THR:C	1:A:266:GLY:H	2.22	0.43
1:A:144:GLU:O	1:A:267:GLY:HA3	2.19	0.43
1:A:63:MSE:HE1	1:A:169:TYR:CZ	2.53	0.43
1:A:119:LYS:HZ3	1:A:119:LYS:HB3	1.79	0.43
1:A:207:SER:HB2	1:A:242:ILE:HG12	2.01	0.42
1:A:223:ILE:HG13	1:A:223:ILE:H	1.67	0.42
1:A:156:GLN:HA	6:A:2047:HOH:O	2.19	0.41
1:A:228:ALA:HA	1:A:229:PRO:HD3	1.94	0.41
1:A:189:LEU:O	1:A:190:ARG:C	2.58	0.41
1:A:218:LEU:HD21	1:A:262:ILE:HD12	2.02	0.41
1:A:83:HIS:HA	1:A:159:PHE:O	2.21	0.40
1:A:100:HIS:NE2	1:A:140:TRP:HB3	2.37	0.40

There are no symmetry-related clashes.

5.3 Torsion angles

5.3.1 Protein backbone

In the following table, the Percentiles column shows the percent Ramachandran outliers of the chain as a percentile score with respect to all X-ray entries followed by that with respect to entries of similar resolution.

The Analysed column shows the number of residues for which the backbone conformation was analysed, and the total number of residues.

Mol	Chain	Analysed	Favoured	Allowed	Outliers	Percentiles	
1	A	257/259 (99%)	236 (92%)	16 (6%)	5 (2%)	9	22

All (5) Ramachandran outliers are listed below:

Mol	Chain	Res	Type
1	A	138	ARG
1	A	199	GLY
1	A	214	ALA
1	A	265	GLU

Continued on next page...

Continued from previous page...

Mol	Chain	Res	Type
1	A	253	ARG

5.3.2 Protein sidechains ⓘ

In the following table, the Percentiles column shows the percent sidechain outliers of the chain as a percentile score with respect to all X-ray entries followed by that with respect to entries of similar resolution.

The Analysed column shows the number of residues for which the sidechain conformation was analysed, and the total number of residues.

Mol	Chain	Analysed	Rotameric	Outliers	Percentiles	
1	A	224/221 (101%)	209 (93%)	15 (7%)	18	40

All (15) residues with a non-rotameric sidechain are listed below:

Mol	Chain	Res	Type
1	A	22	THR
1	A	56	LYS
1	A	98	ASP
1	A	106	LYS
1	A	119	LYS
1	A	135	ASP
1	A	148	SER
1	A	162	ILE
1	A	184	ARG
1	A	200	GLN
1	A	207	SER
1	A	211	ARG
1	A	223	ILE
1	A	247	VAL
1	A	278	VAL

Some sidechains can be flipped to improve hydrogen bonding and reduce clashes. All (7) such sidechains are listed below:

Mol	Chain	Res	Type
1	A	83	HIS
1	A	115	ASN
1	A	167	GLN
1	A	192	GLN
1	A	205	GLN

Continued on next page...

Continued from previous page...

Mol	Chain	Res	Type
1	A	246	ASN
1	A	272	ASN

5.3.3 RNA [i](#)

There are no RNA molecules in this entry.

5.4 Non-standard residues in protein, DNA, RNA chains [i](#)

There are no non-standard protein/DNA/RNA residues in this entry.

5.5 Carbohydrates [i](#)

There are no carbohydrates in this entry.

5.6 Ligand geometry [i](#)

Of 10 ligands modelled in this entry, 2 are monoatomic - leaving 8 for Mogul analysis.

In the following table, the Counts columns list the number of bonds (or angles) for which Mogul statistics could be retrieved, the number of bonds (or angles) that are observed in the model and the number of bonds (or angles) that are defined in the Chemical Component Dictionary. The Link column lists molecule types, if any, to which the group is linked. The Z score for a bond length (or angle) is the number of standard deviations the observed value is removed from the expected value. A bond length (or angle) with $|Z| > 2$ is considered an outlier worth inspection. RMSZ is the root-mean-square of all Z scores of the bond lengths (or angles).

Mol	Type	Chain	Res	Link	Bond lengths			Bond angles		
					Counts	RMSZ	$\# Z > 2$	Counts	RMSZ	$\# Z > 2$
2	NAG	A	1280	1,2	14,14,15	0.62	0	17,19,21	1.51	1 (5%)
2	NAG	A	1281	3,2	14,14,15	0.64	0	17,19,21	2.01	5 (29%)
3	MAN	A	1282	3,2	11,11,12	0.90	0	15,15,17	0.88	0
3	MAN	A	1283	3	11,11,12	0.83	0	15,15,17	2.13	5 (33%)
2	NAG	A	1284	1,2,4	14,14,15	0.59	0	17,19,21	1.83	3 (17%)
2	NAG	A	1285	2	14,14,15	0.72	1 (7%)	17,19,21	1.77	4 (23%)
4	FUC	A	1286	2	9,10,11	0.67	0	13,14,16	1.85	2 (15%)
2	NAG	A	1287	1	14,14,15	0.58	0	17,19,21	2.50	5 (29%)

In the following table, the Chirals column lists the number of chiral outliers, the number of chiral

centers analysed, the number of these observed in the model and the number defined in the Chemical Component Dictionary. Similar counts are reported in the Torsion and Rings columns. '-' means no outliers of that kind were identified.

Mol	Type	Chain	Res	Link	Chirals	Torsions	Rings
2	NAG	A	1280	1,2	-	2/6/23/26	0/1/1/1
2	NAG	A	1281	3,2	-	2/6/23/26	0/1/1/1
3	MAN	A	1282	3,2	-	0/2/19/22	1/1/1/1
3	MAN	A	1283	3	-	1/2/19/22	0/1/1/1
2	NAG	A	1284	1,2,4	-	4/6/23/26	0/1/1/1
2	NAG	A	1285	2	1/1/5/7	1/6/23/26	0/1/1/1
4	FUC	A	1286	2	1/1/4/5	-	0/1/1/1
2	NAG	A	1287	1	-	2/6/23/26	0/1/1/1

All (1) bond length outliers are listed below:

Mol	Chain	Res	Type	Atoms	Z	Observed(Å)	Ideal(Å)
2	A	1285	NAG	C1-C2	2.04	1.55	1.52

All (25) bond angle outliers are listed below:

Mol	Chain	Res	Type	Atoms	Z	Observed(°)	Ideal(°)
2	A	1287	NAG	C4-C3-C2	-6.20	101.93	111.02
3	A	1283	MAN	C1-O5-C5	5.25	119.34	112.20
4	A	1286	FUC	C1-C2-C3	-5.05	103.44	109.66
2	A	1280	NAG	C1-O5-C5	5.03	119.04	112.20
2	A	1287	NAG	C3-C4-C5	-4.97	101.29	110.23
2	A	1284	NAG	C1-O5-C5	4.70	118.59	112.20
2	A	1281	NAG	C4-C3-C2	4.56	117.70	111.02
2	A	1281	NAG	O4-C4-C3	-4.31	100.35	110.34
3	A	1283	MAN	C1-C2-C3	3.94	114.51	109.66
2	A	1281	NAG	C1-O5-C5	3.44	116.88	112.20
2	A	1285	NAG	O5-C5-C6	3.39	112.51	107.15
2	A	1285	NAG	C2-N2-C7	3.34	127.71	122.92
2	A	1284	NAG	O5-C5-C6	-3.32	101.89	107.15
2	A	1287	NAG	C1-O5-C5	3.14	116.47	112.20
2	A	1284	NAG	O5-C1-C2	-3.14	106.43	111.36
2	A	1285	NAG	C1-O5-C5	3.06	116.36	112.20
2	A	1287	NAG	O4-C4-C5	2.97	116.72	109.29
3	A	1283	MAN	O5-C1-C2	2.68	114.92	110.79
2	A	1281	NAG	O4-C4-C5	2.65	115.91	109.29
2	A	1287	NAG	C6-C5-C4	2.52	118.93	113.00
3	A	1283	MAN	C3-C4-C5	2.42	114.58	110.23
2	A	1285	NAG	C1-C2-N2	2.28	114.39	110.49

Continued on next page...

Continued from previous page...

Mol	Chain	Res	Type	Atoms	Z	Observed(°)	Ideal(°)
4	A	1286	FUC	C3-C4-C5	2.09	113.01	109.74
3	A	1283	MAN	C2-C3-C4	2.07	114.47	110.89
2	A	1281	NAG	C3-C4-C5	2.06	113.92	110.23

All (2) chirality outliers are listed below:

Mol	Chain	Res	Type	Atom
2	A	1285	NAG	C1
4	A	1286	FUC	C1

All (12) torsion outliers are listed below:

Mol	Chain	Res	Type	Atoms
2	A	1284	NAG	C8-C7-N2-C2
2	A	1284	NAG	O7-C7-N2-C2
2	A	1287	NAG	C8-C7-N2-C2
2	A	1287	NAG	O7-C7-N2-C2
2	A	1280	NAG	C8-C7-N2-C2
2	A	1280	NAG	O7-C7-N2-C2
2	A	1284	NAG	O5-C5-C6-O6
2	A	1281	NAG	O5-C5-C6-O6
2	A	1281	NAG	C4-C5-C6-O6
2	A	1284	NAG	C4-C5-C6-O6
3	A	1283	MAN	O5-C5-C6-O6
2	A	1285	NAG	C3-C2-N2-C7

All (1) ring outliers are listed below:

Mol	Chain	Res	Type	Atoms
3	A	1282	MAN	C1-C2-C3-C4-C5-O5

3 monomers are involved in 6 short contacts:

Mol	Chain	Res	Type	Clashes	Symm-Clashes
2	A	1280	NAG	2	0
2	A	1285	NAG	4	0
4	A	1286	FUC	1	0

5.7 Other polymers ⓘ

There are no such residues in this entry.

5.8 Polymer linkage issues ⓘ

There are no chain breaks in this entry.

6 Fit of model and data [i](#)

6.1 Protein, DNA and RNA chains [i](#)

In the following table, the column labelled ‘#RSRZ> 2’ contains the number (and percentage) of RSRZ outliers, followed by percent RSRZ outliers for the chain as percentile scores relative to all X-ray entries and entries of similar resolution. The OWAB column contains the minimum, median, 95th percentile and maximum values of the occupancy-weighted average B-factor per residue. The column labelled ‘Q< 0.9’ lists the number of (and percentage) of residues with an average occupancy less than 0.9.

Mol	Chain	Analysed	<RSRZ>	#RSRZ>2	OWAB(Å ²)	Q<0.9
1	A	256/259 (98%)	0.16	11 (4%) 35 33	35, 46, 55, 59	0

All (11) RSRZ outliers are listed below:

Mol	Chain	Res	Type	RSRZ
1	A	224	ASP	4.1
1	A	225	VAL	3.3
1	A	197	ASN	3.3
1	A	279	LYS	2.8
1	A	226	ARG	2.7
1	A	198	ALA	2.5
1	A	201	PHE	2.4
1	A	108	ASN	2.3
1	A	21	GLU	2.3
1	A	200	GLN	2.2
1	A	54	LEU	2.1

6.2 Non-standard residues in protein, DNA, RNA chains [i](#)

There are no non-standard protein/DNA/RNA residues in this entry.

6.3 Carbohydrates [i](#)

There are no carbohydrates in this entry.

6.4 Ligands [i](#)

In the following table, the Atoms column lists the number of modelled atoms in the group and the number defined in the chemical component dictionary. The B-factors column lists the minimum,

median, 95th percentile and maximum values of B factors of atoms in the group. The column labelled 'Q< 0.9' lists the number of atoms with occupancy less than 0.9.

Mol	Type	Chain	Res	Atoms	RSCC	RSR	B-factors(\AA^2)	Q<0.9
3	MAN	A	1282	11/12	0.56	0.34	93,96,97,100	0
3	MAN	A	1283	11/12	0.64	0.37	99,100,101,101	0
2	NAG	A	1281	14/15	0.77	0.21	66,79,84,89	0
2	NAG	A	1284	14/15	0.83	0.21	69,75,79,81	0
2	NAG	A	1285	14/15	0.86	0.26	79,85,87,87	0
4	FUC	A	1286	10/11	0.88	0.20	81,83,84,84	0
2	NAG	A	1287	14/15	0.90	0.19	61,65,69,70	0
5	NA	A	1288	1/1	0.93	0.12	33,33,33,33	0
2	NAG	A	1280	14/15	0.94	0.13	57,61,63,69	0
5	NA	A	1289	1/1	0.96	0.06	44,44,44,44	0

6.5 Other polymers [i](#)

There are no such residues in this entry.