



# wwPDB X-ray Structure Validation Summary Report ⓘ

Mar 9, 2018 – 04:21 am GMT

PDB ID : 5CB0  
Title : Crystal structure and functional implications of the tandem-type universal stress protein UspE from Escherichia coli  
Authors : Xu, Y.; Quan, C.S.; Jin, X.; Jin, L.; Kim, J.S.; Guo, J.; Fan, S.; Ha, N.C.  
Deposited on : 2015-06-30  
Resolution : 3.21 Å(reported)

This is a wwPDB X-ray Structure Validation Summary Report for a publicly released PDB entry.

We welcome your comments at [validation@mail.wwpdb.org](mailto:validation@mail.wwpdb.org)

A user guide is available at

<https://www.wwpdb.org/validation/2017/XrayValidationReportHelp>

with specific help available everywhere you see the ⓘ symbol.

---

The following versions of software and data (see [references ⓘ](#)) were used in the production of this report:

MolProbity : 4.02b-467  
Mogul : 1.7.3 (157068), CSD as539be (2018)  
Xtriage (Phenix) : 1.13  
EDS : trunk30967  
Percentile statistics : 20171227.v01 (using entries in the PDB archive December 27th 2017)  
Refmac : 5.8.0158  
CCP4 : 7.0 (Gargrove)  
Ideal geometry (proteins) : Engh & Huber (2001)  
Ideal geometry (DNA, RNA) : Parkinson et al. (1996)  
Validation Pipeline (wwPDB-VP) : trunk30967

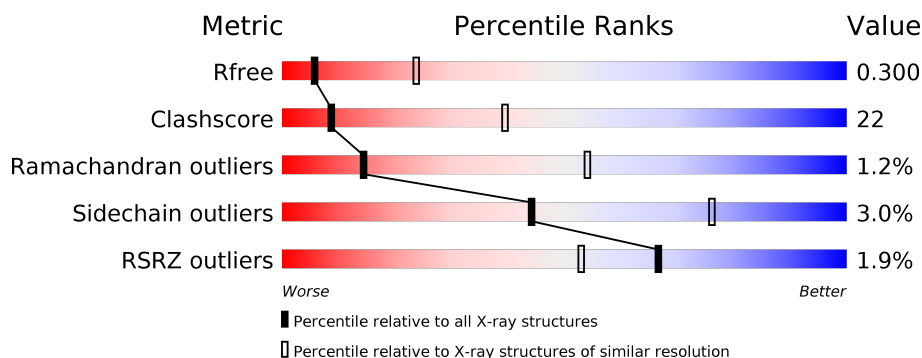
# 1 Overall quality at a glance

The following experimental techniques were used to determine the structure:

## *X-RAY DIFFRACTION*

The reported resolution of this entry is 3.21 Å.

Percentile scores (ranging between 0-100) for global validation metrics of the entry are shown in the following graphic. The table shows the number of entries on which the scores are based.



Metric	Whole archive (#Entries)	Similar resolution (#Entries, resolution range(Å))
$R_{free}$	111664	1121 (3.22-3.18)
Clashscore	122126	1091 (3.20-3.20)
Ramachandran outliers	120053	1074 (3.20-3.20)
Sidechain outliers	120020	1073 (3.20-3.20)
RSRZ outliers	108989	1083 (3.22-3.18)

The table below summarises the geometric issues observed across the polymeric chains and their fit to the electron density. The red, orange, yellow and green segments on the lower bar indicate the fraction of residues that contain outliers for  $\geq 3$ , 2, 1 and 0 types of geometric quality criteria. A grey segment represents the fraction of residues that are not modelled. The numeric value for each fraction is indicated below the corresponding segment, with a dot representing fractions  $\leq 5\%$ . The upper red bar (where present) indicates the fraction of residues that have poor fit to the electron density. The numeric value is given above the bar.

Mol	Chain	Length	Quality of chain
1	A	316	<div> <div style="width: 100%; height: 10px; position: relative;"> <div style="position: absolute; top: -10px; left: 0; width: 100%; height: 1px; background-color: red;"></div> <div style="position: absolute; bottom: 0; left: 0; width: 100%; height: 10px;"> <div style="width: 57%; height: 10px; background-color: green;"></div> <div style="width: 31%; height: 10px; background-color: yellow;"></div> <div style="width: 8%; height: 10px; background-color: orange;"></div> <div style="width: 4%; height: 10px; background-color: grey;"></div> </div> </div> <div>57% 31% • 8%</div> </div>
1	B	316	<div> <div style="width: 100%; height: 10px; position: relative;"> <div style="position: absolute; top: -10px; left: 0; width: 100%; height: 1px; background-color: red;"></div> <div style="position: absolute; bottom: 0; left: 0; width: 100%; height: 10px;"> <div style="width: 64%; height: 10px; background-color: green;"></div> <div style="width: 25%; height: 10px; background-color: yellow;"></div> <div style="width: 9%; height: 10px; background-color: orange;"></div> <div style="width: 2%; height: 10px; background-color: grey;"></div> </div> </div> <div>3% 64% 25% • 9%</div> </div>

The following table lists non-polymeric compounds, carbohydrate monomers and non-standard residues in protein, DNA, RNA chains that are outliers for geometric or electron-density-fit criteria:

Mol	Type	Chain	Res	Chirality	Geometry	Clashes	Electron density
2	Z6X	B	401	-	-	-	X

## 2 Entry composition [i](#)

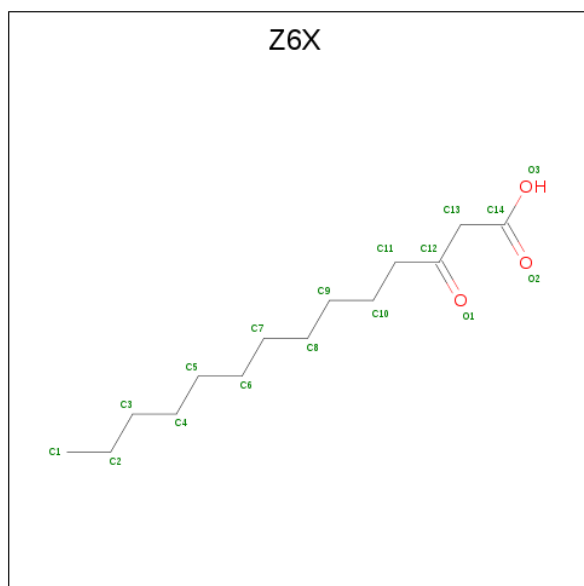
There are 2 unique types of molecules in this entry. The entry contains 4665 atoms, of which 0 are hydrogens and 0 are deuteriums.

In the tables below, the ZeroOcc column contains the number of atoms modelled with zero occupancy, the AltConf column contains the number of residues with at least one atom in alternate conformation and the Trace column contains the number of residues modelled with at most 2 atoms.

- Molecule 1 is a protein called Universal stress protein E.

Mol	Chain	Residues	Atoms					ZeroOcc	AltConf	Trace
1	A	290	Total	C	N	O	S	1	0	0
			2320	1487	402	421	10			
1	B	288	Total	C	N	O	S	1	0	0
			2311	1478	403	420	10			

- Molecule 2 is 3-oxotetradecanoic acid (three-letter code: Z6X) (formula: C<sub>14</sub>H<sub>26</sub>O<sub>3</sub>).



Mol	Chain	Residues	Atoms			ZeroOcc	AltConf
2	A	1	Total	C	O	0	0
			17	14	3		
2	B	1	Total	C	O	0	0
			17	14	3		



## 4 Data and refinement statistics

Property	Value	Source
Space group	I 41 2 2	Depositor
Cell constants a, b, c, $\alpha$ , $\beta$ , $\gamma$	121.13Å 121.13Å 241.75Å 90.00° 90.00° 90.00°	Depositor
Resolution (Å)	19.90 – 3.21 44.96 – 3.21	Depositor EDS
% Data completeness (in resolution range)	46.5 (19.90-3.21) 86.2 (44.96-3.21)	Depositor EDS
$R_{merge}$	(Not available)	Depositor
$R_{sym}$	(Not available)	Depositor
$\langle I/\sigma(I) \rangle$ <sup>1</sup>	4.46 (at 3.19Å)	Xtriage
Refinement program	PHENIX 1.8.4_1496	Depositor
R, $R_{free}$	0.243 , 0.301 0.245 , 0.300	Depositor DCC
$R_{free}$ test set	1308 reflections (10.01%)	wwPDB-VP
Wilson B-factor (Å <sup>2</sup> )	75.5	Xtriage
Anisotropy	0.155	Xtriage
Bulk solvent $k_{sol}$ (e/Å <sup>3</sup> ), $B_{sol}$ (Å <sup>2</sup> )	0.32 , 43.8	EDS
L-test for twinning <sup>2</sup>	$\langle  L  \rangle = 0.35$ , $\langle L^2 \rangle = 0.18$	Xtriage
Estimated twinning fraction	No twinning to report.	Xtriage
$F_o, F_c$ correlation	0.88	EDS
Total number of atoms	4665	wwPDB-VP
Average B, all atoms (Å <sup>2</sup> )	70.0	wwPDB-VP

Xtriage's analysis on translational NCS is as follows: *The largest off-origin peak in the Patterson function is 4.11% of the height of the origin peak. No significant pseudotranslation is detected.*

<sup>1</sup>Intensities estimated from amplitudes.

<sup>2</sup>Theoretical values of  $\langle |L| \rangle$ ,  $\langle L^2 \rangle$  for acentric reflections are 0.5, 0.333 respectively for untwinned datasets, and 0.375, 0.2 for perfectly twinned datasets.

## 5 Model quality

### 5.1 Standard geometry

Bond lengths and bond angles in the following residue types are not validated in this section: Z6X

The Z score for a bond length (or angle) is the number of standard deviations the observed value is removed from the expected value. A bond length (or angle) with  $|Z| > 5$  is considered an outlier worth inspection. RMSZ is the root-mean-square of all Z scores of the bond lengths (or angles).

Mol	Chain	Bond lengths		Bond angles	
		RMSZ	$\# Z  > 5$	RMSZ	$\# Z  > 5$
1	A	0.41	0/2377	0.70	3/3236 (0.1%)
1	B	0.33	0/2367	0.63	2/3219 (0.1%)
All	All	0.38	0/4744	0.67	5/6455 (0.1%)

Chiral center outliers are detected by calculating the chiral volume of a chiral center and verifying if the center is modelled as a planar moiety or with the opposite hand. A planarity outlier is detected by checking planarity of atoms in a peptide group, atoms in a mainchain group or atoms of a sidechain that are expected to be planar.

Mol	Chain	#Chirality outliers	#Planarity outliers
1	A	0	1

There are no bond length outliers.

All (5) bond angle outliers are listed below:

Mol	Chain	Res	Type	Atoms	Z	Observed( $^{\circ}$ )	Ideal( $^{\circ}$ )
1	B	227	LEU	CA-CB-CG	11.86	142.57	115.30
1	A	201	THR	C-N-CD	5.67	140.31	128.40
1	A	202	PRO	CA-N-CD	-5.46	103.86	111.50
1	A	122	LEU	CA-CB-CG	-5.35	103.00	115.30
1	B	122	LEU	CA-CB-CG	5.33	127.55	115.30

There are no chirality outliers.

All (1) planarity outliers are listed below:

Mol	Chain	Res	Type	Group
1	A	188	ASN	Peptide

## 5.2 Too-close contacts

In the following table, the Non-H and H(model) columns list the number of non-hydrogen atoms and hydrogen atoms in the chain respectively. The H(added) column lists the number of hydrogen atoms added and optimized by MolProbity. The Clashes column lists the number of clashes within the asymmetric unit, whereas Symm-Clashes lists symmetry related clashes.

Mol	Chain	Non-H	H(model)	H(added)	Clashes	Symm-Clashes
1	A	2320	0	2311	126	0
1	B	2311	0	2296	90	5
2	A	17	0	25	3	0
2	B	17	0	25	5	0
All	All	4665	0	4657	204	5

The all-atom clashscore is defined as the number of clashes found per 1000 atoms (including hydrogen atoms). The all-atom clashscore for this structure is 22.

The worst 5 of 204 close contacts within the same asymmetric unit are listed below, sorted by their clash magnitude.

Atom-1	Atom-2	Interatomic distance (Å)	Clash overlap (Å)
1:A:233:ARG:NH1	1:A:240:GLU:HG3	1.52	1.22
1:A:302:ASP:OD1	1:A:303:GLN:NE2	1.88	1.07
1:A:233:ARG:HH12	1:A:240:GLU:CG	1.69	1.05
1:A:233:ARG:HH12	1:A:240:GLU:HG3	0.85	1.01
1:B:120:ASP:HB3	1:B:123:GLU:HG3	1.40	1.01

All (5) symmetry-related close contacts are listed below. The label for Atom-2 includes the symmetry operator and encoded unit-cell translations to be applied.

Atom-1	Atom-2	Interatomic distance (Å)	Clash overlap (Å)
1:B:303:GLN:OE1	1:B:303:GLN:OE1[10_555]	0.73	1.47
1:B:303:GLN:CD	1:B:303:GLN:OE1[10_555]	0.92	1.28
1:B:303:GLN:CD	1:B:303:GLN:CD[10_555]	1.79	0.41
1:B:303:GLN:CG	1:B:303:GLN:OE1[10_555]	1.89	0.31
1:B:303:GLN:OE1	1:B:303:GLN:NE2[10_555]	2.16	0.04



## 5.3 Torsion angles

### 5.3.1 Protein backbone

In the following table, the Percentiles column shows the percent Ramachandran outliers of the chain as a percentile score with respect to all X-ray entries followed by that with respect to entries of similar resolution.

The Analysed column shows the number of residues for which the backbone conformation was analysed, and the total number of residues.

Mol	Chain	Analysed	Favoured	Allowed	Outliers	Percentiles	
1	A	284/316 (90%)	262 (92%)	16 (6%)	6 (2%)	8	40
1	B	282/316 (89%)	268 (95%)	13 (5%)	1 (0%)	36	74
All	All	566/632 (90%)	530 (94%)	29 (5%)	7 (1%)	14	54

5 of 7 Ramachandran outliers are listed below:

Mol	Chain	Res	Type
1	A	240	GLU
1	A	108	GLY
1	A	202	PRO
1	A	281	LEU
1	B	120	ASP

### 5.3.2 Protein sidechains

In the following table, the Percentiles column shows the percent sidechain outliers of the chain as a percentile score with respect to all X-ray entries followed by that with respect to entries of similar resolution.

The Analysed column shows the number of residues for which the sidechain conformation was analysed, and the total number of residues.

Mol	Chain	Analysed	Rotameric	Outliers	Percentiles	
1	A	252/273 (92%)	241 (96%)	11 (4%)	31	67
1	B	250/273 (92%)	246 (98%)	4 (2%)	65	87
All	All	502/546 (92%)	487 (97%)	15 (3%)	44	76

5 of 15 residues with a non-rotameric sidechain are listed below:

Mol	Chain	Res	Type
1	A	233	ARG

*Continued on next page...*

*Continued from previous page...*

Mol	Chain	Res	Type
1	A	280	PHE
1	B	121	ARG
1	A	224	GLN
1	B	119	HIS

Some sidechains can be flipped to improve hydrogen bonding and reduce clashes. All (4) such sidechains are listed below:

Mol	Chain	Res	Type
1	A	224	GLN
1	B	133	HIS
1	B	225	HIS
1	B	291	HIS

### 5.3.3 RNA [i](#)

There are no RNA molecules in this entry.

## 5.4 Non-standard residues in protein, DNA, RNA chains [i](#)

There are no non-standard protein/DNA/RNA residues in this entry.

## 5.5 Carbohydrates [i](#)

There are no carbohydrates in this entry.

## 5.6 Ligand geometry [i](#)

2 ligands are modelled in this entry.

In the following table, the Counts columns list the number of bonds (or angles) for which Mogul statistics could be retrieved, the number of bonds (or angles) that are observed in the model and the number of bonds (or angles) that are defined in the Chemical Component Dictionary. The Link column lists molecule types, if any, to which the group is linked. The Z score for a bond length (or angle) is the number of standard deviations the observed value is removed from the expected value. A bond length (or angle) with  $|Z| > 2$  is considered an outlier worth inspection. RMSZ is the root-mean-square of all Z scores of the bond lengths (or angles).

Mol	Type	Chain	Res	Link	Bond lengths			Bond angles		
					Counts	RMSZ	$\# Z  > 2$	Counts	RMSZ	$\# Z  > 2$
2	Z6X	A	401	-	13,16,16	3.06	1 (7%)	13,17,17	0.40	0

Mol	Type	Chain	Res	Link	Bond lengths			Bond angles		
					Counts	RMSZ	# Z  > 2	Counts	RMSZ	# Z  > 2
2	Z6X	B	401	-	13,16,16	3.03	1 (7%)	13,17,17	0.47	0

In the following table, the Chirals column lists the number of chiral outliers, the number of chiral centers analysed, the number of these observed in the model and the number defined in the Chemical Component Dictionary. Similar counts are reported in the Torsion and Rings columns. '-' means no outliers of that kind were identified.

Mol	Type	Chain	Res	Link	Chirals	Torsions	Rings
2	Z6X	A	401	-	-	0/13/15/15	0/0/0/0
2	Z6X	B	401	-	-	0/13/15/15	0/0/0/0

All (2) bond length outliers are listed below:

Mol	Chain	Res	Type	Atoms	Z	Observed(Å)	Ideal(Å)
2	B	401	Z6X	O1-C12	10.93	1.40	1.21
2	A	401	Z6X	O1-C12	11.02	1.41	1.21

There are no bond angle outliers.

There are no chirality outliers.

There are no torsion outliers.

There are no ring outliers.

2 monomers are involved in 8 short contacts:

Mol	Chain	Res	Type	Clashes	Symm-Clashes
2	A	401	Z6X	3	0
2	B	401	Z6X	5	0

## 5.7 Other polymers [i](#)

There are no such residues in this entry.

## 5.8 Polymer linkage issues [i](#)

There are no chain breaks in this entry.

## 6 Fit of model and data [i](#)

### 6.1 Protein, DNA and RNA chains [i](#)

In the following table, the column labelled ‘#RSRZ> 2’ contains the number (and percentage) of RSRZ outliers, followed by percent RSRZ outliers for the chain as percentile scores relative to all X-ray entries and entries of similar resolution. The OWAB column contains the minimum, median, 95<sup>th</sup> percentile and maximum values of the occupancy-weighted average B-factor per residue. The column labelled ‘Q< 0.9’ lists the number of (and percentage) of residues with an average occupancy less than 0.9.

Mol	Chain	Analysed	<RSRZ>	#RSRZ>2	OWAB(Å <sup>2</sup> )	Q<0.9
1	A	290/316 (91%)	-0.13	3 (1%) 82 73	34, 66, 110, 130	1 (0%)
1	B	288/316 (91%)	0.15	8 (2%) 53 39	29, 68, 108, 145	1 (0%)
All	All	578/632 (91%)	0.01	11 (1%) 66 53	29, 66, 110, 145	2 (0%)

The worst 5 of 11 RSRZ outliers are listed below:

Mol	Chain	Res	Type	RSRZ
1	B	211	GLU	6.8
1	A	212	PHE	4.1
1	B	55	ASP	3.3
1	B	214	PRO	3.1
1	A	55	ASP	3.0

### 6.2 Non-standard residues in protein, DNA, RNA chains [i](#)

There are no non-standard protein/DNA/RNA residues in this entry.

### 6.3 Carbohydrates [i](#)

There are no carbohydrates in this entry.

### 6.4 Ligands [i](#)

In the following table, the Atoms column lists the number of modelled atoms in the group and the number defined in the chemical component dictionary. The B-factors column lists the minimum, median, 95<sup>th</sup> percentile and maximum values of B factors of atoms in the group. The column labelled ‘Q< 0.9’ lists the number of atoms with occupancy less than 0.9.

Mol	Type	Chain	Res	Atoms	RSCC	RSR	B-factors( $\text{\AA}^2$ )	Q<0.9
2	Z6X	B	401	17/17	0.80	0.56	61,75,91,109	0
2	Z6X	A	401	17/17	0.89	0.54	77,86,103,108	0

## 6.5 Other polymers [i](#)

There are no such residues in this entry.