



wwPDB X-ray Structure Validation Summary Report ⓘ

Feb 23, 2018 – 08:07 am GMT

PDB ID : 1CDK
Title : CAMP-DEPENDENT PROTEIN KINASE CATALYTIC SUBUNIT (E.C.2.7.1.37) (PROTEIN KINASE A) COMPLEXED WITH PROTEIN KINASE INHIBITOR PEPTIDE FRAGMENT 5-24 (PKI(5-24) ISOELECTRIC VARIANT CA) AND MN²⁺ ADENYLYL IMIDODIPHOSPHATE (MNAMP-PNP) AT PH 5.6 AND 7C AND 4C
Authors : Bossemeyer, D.; Engh, R.A.; Kinzel, V.; Ponstingl, H.; Huber, R.
Deposited on : 1994-07-04
Resolution : 2.00 Å(reported)

This is a wwPDB X-ray Structure Validation Summary Report for a publicly released PDB entry.

We welcome your comments at validation@mail.wwpdb.org

A user guide is available at

<https://www.wwpdb.org/validation/2017/XrayValidationReportHelp>

with specific help available everywhere you see the ⓘ symbol.

The following versions of software and data (see [references ⓘ](#)) were used in the production of this report:

MolProbity : 4.02b-467
Mogul : 1.7.3 (157068), CSD as539be (2018)
Xtriage (Phenix) : **NOT EXECUTED**
EDS : **NOT EXECUTED**
Percentile statistics : 20171227.v01 (using entries in the PDB archive December 27th 2017)
Ideal geometry (proteins) : Engh & Huber (2001)
Ideal geometry (DNA, RNA) : Parkinson et al. (1996)
Validation Pipeline (wwPDB-VP) : trunk30686

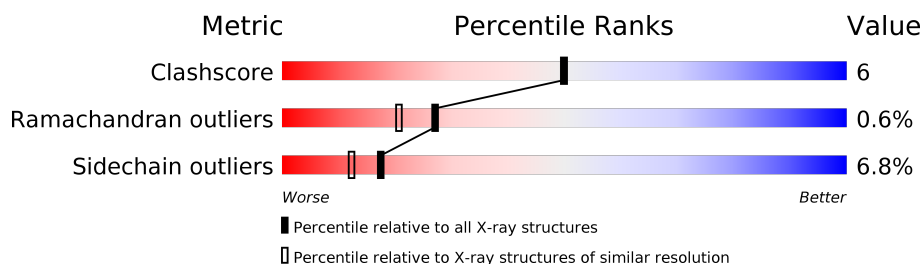
1 Overall quality at a glance

The following experimental techniques were used to determine the structure:

X-RAY DIFFRACTION

The reported resolution of this entry is 2.00 Å.

Percentile scores (ranging between 0-100) for global validation metrics of the entry are shown in the following graphic. The table shows the number of entries on which the scores are based.



Metric	Whole archive (#Entries)	Similar resolution (#Entries, resolution range(Å))
Clashscore	122078	8264 (2.00-2.00)
Ramachandran outliers	120005	8163 (2.00-2.00)
Sidechain outliers	119972	8162 (2.00-2.00)

The table below summarises the geometric issues observed across the polymeric chains and their fit to the electron density. The red, orange, yellow and green segments on the lower bar indicate the fraction of residues that contain outliers for ≥ 3 , 2, 1 and 0 types of geometric quality criteria. A grey segment represents the fraction of residues that are not modelled. The numeric value for each fraction is indicated below the corresponding segment, with a dot representing fractions $\leq 5\%$.

Note EDS was not executed.

Mol	Chain	Length	Quality of chain
1	A	350	
1	B	350	
2	I	20	
2	J	20	

2 Entry composition

There are 6 unique types of molecules in this entry. The entry contains 6361 atoms, of which 0 are hydrogens and 0 are deuteriums.

In the tables below, the ZeroOcc column contains the number of atoms modelled with zero occupancy, the AltConf column contains the number of residues with at least one atom in alternate conformation and the Trace column contains the number of residues modelled with at most 2 atoms.

- Molecule 1 is a protein called CAMP-DEPENDENT PROTEIN KINASE.

Mol	Chain	Residues	Atoms						ZeroOcc	AltConf	Trace
1	A	343	Total	C	N	O	P	S	107	0	0
			2828	1832	475	512	1	8			
1	B	343	Total	C	N	O	P	S	100	0	0
			2829	1833	475	512	1	8			

There are 8 discrepancies between the modelled and reference sequences:

Chain	Residue	Modelled	Actual	Comment	Reference
A	63	LYS	MET	CONFLICT	UNP P00517
A	69	PHE	TYR	CONFLICT	UNP P00517
A	108	TYR	PHE	CONFLICT	UNP P00517
A	286	ASP	ASN	CONFLICT	UNP P00517
B	63	LYS	MET	CONFLICT	UNP P00517
B	69	PHE	TYR	CONFLICT	UNP P00517
B	108	TYR	PHE	CONFLICT	UNP P00517
B	286	ASP	ASN	CONFLICT	UNP P00517

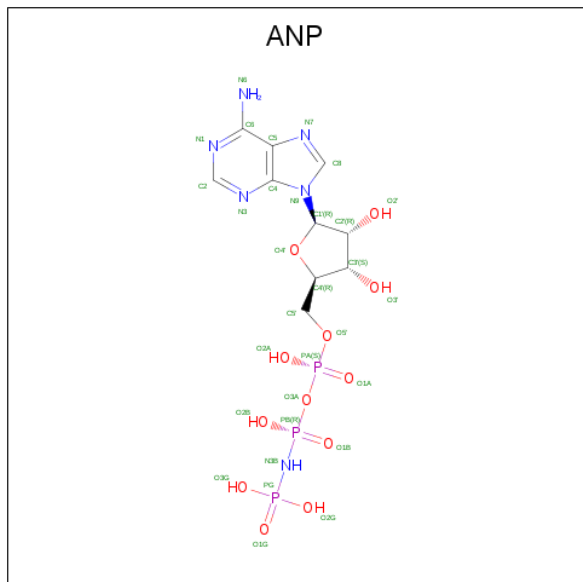
- Molecule 2 is a protein called PROTEIN KINASE INHIBITOR.

Mol	Chain	Residues	Atoms				ZeroOcc	AltConf	Trace
2	I	20	Total	C	N	O	7	0	0
			157	94	32	31			
2	J	20	Total	C	N	O	8	0	0
			157	94	32	31			

- Molecule 3 is MANGANESE (II) ION (three-letter code: MN) (formula: Mn).

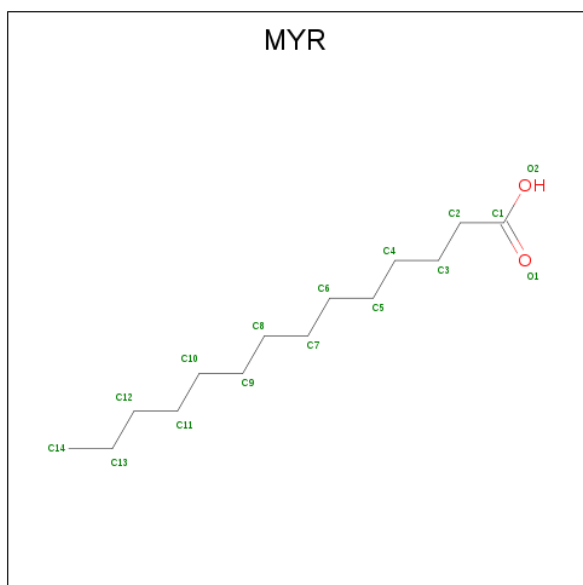
Mol	Chain	Residues	Atoms		ZeroOcc	AltConf
3	B	2	Total	Mn	0	0
			2	2		
3	A	2	Total	Mn	0	0
			2	2		

- Molecule 4 is PHOSPHOAMINOPHOSPHONIC ACID-ADENYLATE ESTER (three-letter code: ANP) (formula: $C_{10}H_{17}N_6O_{12}P_3$).



Mol	Chain	Residues	Atoms					ZeroOcc	AltConf
4	A	1	Total	C	N	O	P	0	0
			31	10	6	12	3		
4	B	1	Total	C	N	O	P	0	0
			31	10	6	12	3		

- Molecule 5 is MYRISTIC ACID (three-letter code: MYR) (formula: $C_{14}H_{28}O_2$).



Mol	Chain	Residues	Atoms	ZeroOcc	AltConf
5	A	1	Total C 6 6	0	0
5	B	1	Total C 6 6	0	0

- Molecule 6 is water.

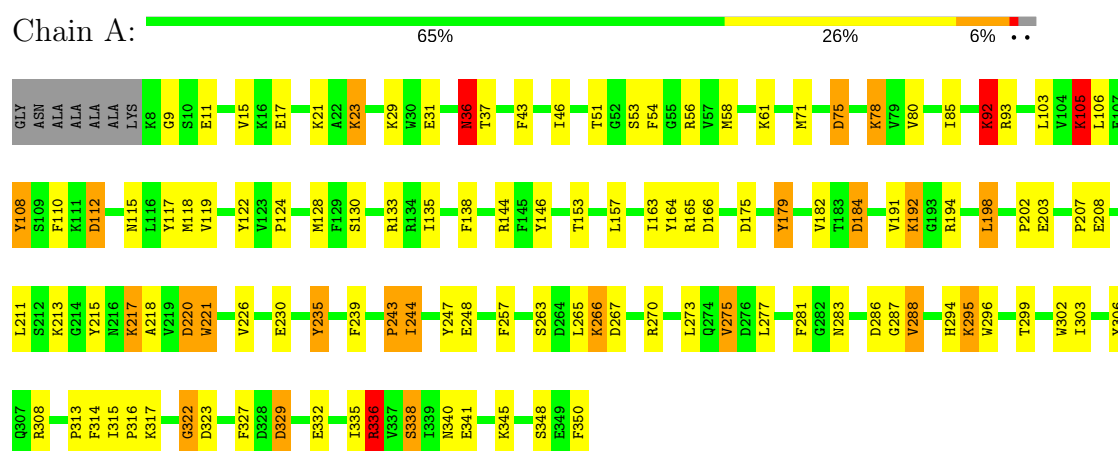
Mol	Chain	Residues	Atoms	ZeroOcc	AltConf
6	A	129	Total O 129 129	0	0
6	I	20	Total O 20 20	0	0
6	B	140	Total O 140 140	0	0
6	J	23	Total O 23 23	0	0

3 Residue-property plots

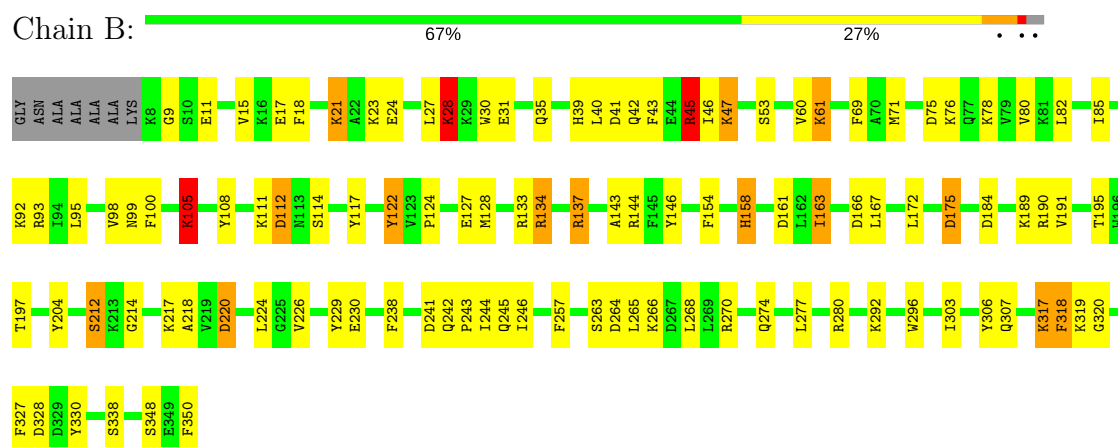
These plots are drawn for all protein, RNA and DNA chains in the entry. The first graphic for a chain summarises the proportions of the various outlier classes displayed in the second graphic. The second graphic shows the sequence view annotated by issues in geometry. Residues are color-coded according to the number of geometric quality criteria for which they contain at least one outlier: green = 0, yellow = 1, orange = 2 and red = 3 or more. Stretches of 2 or more consecutive residues without any outlier are shown as a green connector. Residues present in the sample, but not in the model, are shown in grey.

Note EDS was not executed.

• Molecule 1: CAMP-DEPENDENT PROTEIN KINASE



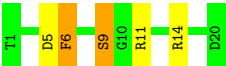
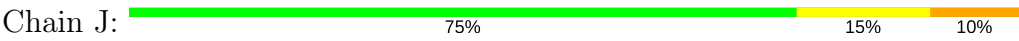
• Molecule 1: CAMP-DEPENDENT PROTEIN KINASE



• Molecule 2: PROTEIN KINASE INHIBITOR



• Molecule 2: PROTEIN KINASE INHIBITOR



4 Data and refinement statistics

Xtriage (Phenix) and EDS were not executed - this section is therefore incomplete.

Property	Value	Source
Space group	I 1 2 1	Depositor
Cell constants a, b, c, α , β , γ	107.61 Å 80.60 Å 110.10 Å 90.00° 88.59° 90.00°	Depositor
Resolution (Å)	5.00 – 2.00	Depositor
% Data completeness (in resolution range)	(Not available) (5.00-2.00)	Depositor
R_{merge}	(Not available)	Depositor
R_{sym}	(Not available)	Depositor
Refinement program	X-PLOR	Depositor
R, R_{free}	0.197 , (Not available)	Depositor
Estimated twinning fraction	No twinning to report.	Xtriage
Total number of atoms	6361	wwPDB-VP
Average B, all atoms (Å ²)	31.0	wwPDB-VP

5 Model quality

5.1 Standard geometry

Bond lengths and bond angles in the following residue types are not validated in this section: TPO, MYR, ANP, MN

The Z score for a bond length (or angle) is the number of standard deviations the observed value is removed from the expected value. A bond length (or angle) with $|Z| > 5$ is considered an outlier worth inspection. RMSZ is the root-mean-square of all Z scores of the bond lengths (or angles).

Mol	Chain	Bond lengths		Bond angles	
		RMSZ	$\# Z > 5$	RMSZ	$\# Z > 5$
1	A	1.19	10/2888 (0.3%)	1.57	47/3888 (1.2%)
1	B	1.20	4/2890 (0.1%)	1.53	42/3892 (1.1%)
2	I	1.20	0/159	1.44	3/212 (1.4%)
2	J	1.34	1/159 (0.6%)	1.52	3/212 (1.4%)
All	All	1.20	15/6096 (0.2%)	1.55	95/8204 (1.2%)

Chiral center outliers are detected by calculating the chiral volume of a chiral center and verifying if the center is modelled as a planar moiety or with the opposite hand. A planarity outlier is detected by checking planarity of atoms in a peptide group, atoms in a mainchain group or atoms of a sidechain that are expected to be planar.

Mol	Chain	#Chirality outliers	#Planarity outliers
1	A	1	25
1	B	0	28
2	I	0	5
2	J	0	2
All	All	1	60

The worst 5 of 15 bond length outliers are listed below:

Mol	Chain	Res	Type	Atoms	Z	Observed(Å)	Ideal(Å)
1	A	323	ASP	N-CA	-9.91	1.26	1.46
1	A	179	TYR	CD2-CE2	6.21	1.48	1.39
1	A	36	ASN	CB-CG	5.90	1.64	1.51
1	A	327	PHE	CG-CD2	5.83	1.47	1.38
1	B	30	TRP	CB-CG	5.82	1.60	1.50

The worst 5 of 95 bond angle outliers are listed below:

Mol	Chain	Res	Type	Atoms	Z	Observed(°)	Ideal(°)
1	B	184	ASP	CB-CG-OD1	14.68	131.51	118.30
1	A	323	ASP	N-CA-CB	12.76	133.56	110.60
1	A	322	GLY	CA-C-N	-12.36	90.01	117.20
1	B	270	ARG	NE-CZ-NH2	-12.13	114.23	120.30
1	A	128	MET	CG-SD-CE	-11.72	81.45	100.20

All (1) chirality outliers are listed below:

Mol	Chain	Res	Type	Atom
1	A	192	LYS	CA

5 of 60 planarity outliers are listed below:

Mol	Chain	Res	Type	Group
1	A	108	TYR	Sidechain
1	A	164	TYR	Sidechain
1	A	166	ASP	Mainchain
1	A	23	LYS	Mainchain
1	A	51	THR	Mainchain

5.2 Too-close contacts

In the following table, the Non-H and H(model) columns list the number of non-hydrogen atoms and hydrogen atoms in the chain respectively. The H(added) column lists the number of hydrogen atoms added and optimized by MolProbity. The Clashes column lists the number of clashes within the asymmetric unit, whereas Symm-Clashes lists symmetry related clashes.

Mol	Chain	Non-H	H(model)	H(added)	Clashes	Symm-Clashes
1	A	2828	0	2805	43	0
1	B	2829	0	2810	30	0
2	I	157	0	149	4	0
2	J	157	0	149	1	0
3	A	2	0	0	0	0
3	B	2	0	0	0	0
4	A	31	0	13	0	0
4	B	31	0	13	0	0
5	A	6	0	11	0	0
5	B	6	0	11	1	0
6	A	129	0	0	4	0
6	B	140	0	0	4	0
6	I	20	0	0	0	0
6	J	23	0	0	0	0

Continued on next page...

Continued from previous page...

Mol	Chain	Non-H	H(model)	H(added)	Clashes	Symm-Clashes
All	All	6361	0	5961	73	0

The all-atom clashscore is defined as the number of clashes found per 1000 atoms (including hydrogen atoms). The all-atom clashscore for this structure is 6.

The worst 5 of 73 close contacts within the same asymmetric unit are listed below, sorted by their clash magnitude.

Atom-1	Atom-2	Interatomic distance (Å)	Clash overlap (Å)
1:A:336:ARG:HH11	1:A:336:ARG:HB2	1.49	0.77
1:A:75:ASP:HB3	1:A:78:LYS:HG2	1.71	0.72
1:B:80:VAL:HG22	1:B:85:ILE:HD11	1.74	0.70
1:A:211:LEU:HB2	1:A:213:LYS:HE2	1.78	0.65
1:A:340:ASN:HD21	1:B:137:ARG:HH22	1.46	0.64

There are no symmetry-related clashes.

5.3 Torsion angles [i](#)

5.3.1 Protein backbone [i](#)

In the following table, the Percentiles column shows the percent Ramachandran outliers of the chain as a percentile score with respect to all X-ray entries followed by that with respect to entries of similar resolution.

The Analysed column shows the number of residues for which the backbone conformation was analysed, and the total number of residues.

Mol	Chain	Analysed	Favoured	Allowed	Outliers	Percentiles	
1	A	340/350 (97%)	324 (95%)	13 (4%)	3 (1%)	19	12
1	B	340/350 (97%)	320 (94%)	19 (6%)	1 (0%)	43	39
2	I	18/20 (90%)	16 (89%)	2 (11%)	0	100	100
2	J	18/20 (90%)	16 (89%)	2 (11%)	0	100	100
All	All	716/740 (97%)	676 (94%)	36 (5%)	4 (1%)	27	21

All (4) Ramachandran outliers are listed below:

Mol	Chain	Res	Type
1	A	36	ASN

Continued on next page...

Continued from previous page...

Mol	Chain	Res	Type
1	A	46	ILE
1	B	320	GLY
1	A	9	GLY

5.3.2 Protein sidechains ⓘ

In the following table, the Percentiles column shows the percent sidechain outliers of the chain as a percentile score with respect to all X-ray entries followed by that with respect to entries of similar resolution.

The Analysed column shows the number of residues for which the sidechain conformation was analysed, and the total number of residues.

Mol	Chain	Analysed	Rotameric	Outliers	Percentiles	
1	A	301/304 (99%)	277 (92%)	24 (8%)	13	8
1	B	302/304 (99%)	283 (94%)	19 (6%)	20	14
2	I	15/15 (100%)	15 (100%)	0	100	100
2	J	15/15 (100%)	15 (100%)	0	100	100
All	All	633/638 (99%)	590 (93%)	43 (7%)	17	12

5 of 43 residues with a non-rotameric sidechain are listed below:

Mol	Chain	Res	Type
1	A	329	ASP
1	B	21	LYS
1	B	317	LYS
1	A	335	ILE
1	A	336	ARG

Some sidechains can be flipped to improve hydrogen bonding and reduce clashes. 5 of 12 such sidechains are listed below:

Mol	Chain	Res	Type
1	B	67	ASN
1	B	99	ASN
1	B	283	ASN
1	B	39	HIS
1	B	271	ASN

5.3.3 RNA ⓘ

There are no RNA molecules in this entry.

5.4 Non-standard residues in protein, DNA, RNA chains ⓘ

2 non-standard protein/DNA/RNA residues are modelled in this entry.

In the following table, the Counts columns list the number of bonds (or angles) for which Mogul statistics could be retrieved, the number of bonds (or angles) that are observed in the model and the number of bonds (or angles) that are defined in the Chemical Component Dictionary. The Link column lists molecule types, if any, to which the group is linked. The Z score for a bond length (or angle) is the number of standard deviations the observed value is removed from the expected value. A bond length (or angle) with $|Z| > 2$ is considered an outlier worth inspection. RMSZ is the root-mean-square of all Z scores of the bond lengths (or angles).

Mol	Type	Chain	Res	Link	Bond lengths			Bond angles		
					Counts	RMSZ	$\# Z > 2$	Counts	RMSZ	$\# Z > 2$
1	TPO	A	197	1	9,10,11	1.79	2 (22%)	11,14,16	1.93	4 (36%)
1	TPO	B	197	1	9,10,11	2.37	2 (22%)	11,14,16	2.05	5 (45%)

In the following table, the Chirals column lists the number of chiral outliers, the number of chiral centers analysed, the number of these observed in the model and the number defined in the Chemical Component Dictionary. Similar counts are reported in the Torsion and Rings columns. '-' means no outliers of that kind were identified.

Mol	Type	Chain	Res	Link	Chirals	Torsions	Rings
1	TPO	A	197	1	-	0/8/11/13	0/0/0/0
1	TPO	B	197	1	-	0/8/11/13	0/0/0/0

All (4) bond length outliers are listed below:

Mol	Chain	Res	Type	Atoms	Z	Observed(Å)	Ideal(Å)
1	B	197	TPO	P-OG1	-6.20	1.47	1.59
1	A	197	TPO	P-O1P	2.15	1.57	1.50
1	B	197	TPO	CA-C	2.41	1.53	1.50
1	A	197	TPO	CA-C	3.91	1.55	1.50

The worst 5 of 9 bond angle outliers are listed below:

Mol	Chain	Res	Type	Atoms	Z	Observed(°)	Ideal(°)
1	A	197	TPO	O-C-CA	-3.53	116.86	125.09
1	B	197	TPO	O3P-P-OG1	-3.31	91.16	105.99
1	B	197	TPO	O-C-CA	-2.73	118.73	125.09

Continued on next page...

Continued from previous page...

Mol	Chain	Res	Type	Atoms	Z	Observed(°)	Ideal(°)
1	A	197	TPO	O3P-P-OG1	-2.09	96.61	105.99
1	B	197	TPO	O2P-P-OG1	2.34	116.48	105.99

There are no chirality outliers.

There are no torsion outliers.

There are no ring outliers.

1 monomer is involved in 1 short contact:

Mol	Chain	Res	Type	Clashes	Symm-Clashes
1	B	197	TPO	1	0

5.5 Carbohydrates [i](#)

There are no carbohydrates in this entry.

5.6 Ligand geometry [i](#)

Of 8 ligands modelled in this entry, 4 are monoatomic - leaving 4 for Mogul analysis.

In the following table, the Counts columns list the number of bonds (or angles) for which Mogul statistics could be retrieved, the number of bonds (or angles) that are observed in the model and the number of bonds (or angles) that are defined in the Chemical Component Dictionary. The Link column lists molecule types, if any, to which the group is linked. The Z score for a bond length (or angle) is the number of standard deviations the observed value is removed from the expected value. A bond length (or angle) with $|Z| > 2$ is considered an outlier worth inspection. RMSZ is the root-mean-square of all Z scores of the bond lengths (or angles).

Mol	Type	Chain	Res	Link	Bond lengths			Bond angles		
					Counts	RMSZ	# Z > 2	Counts	RMSZ	# Z > 2
4	ANP	A	400	3	29,33,33	1.94	6 (20%)	29,52,52	1.54	5 (17%)
5	MYR	A	403	-	5,5,15	0.48	0	4,4,15	0.43	0
4	ANP	B	400	3	29,33,33	1.73	6 (20%)	29,52,52	1.61	2 (6%)
5	MYR	B	403	-	5,5,15	0.48	0	4,4,15	0.52	0

In the following table, the Chirals column lists the number of chiral outliers, the number of chiral centers analysed, the number of these observed in the model and the number defined in the Chemical Component Dictionary. Similar counts are reported in the Torsion and Rings columns. '-' means no outliers of that kind were identified.

Mol	Type	Chain	Res	Link	Chirals	Torsions	Rings
4	ANP	A	400	3	-	1/13/38/38	0/3/3/3
5	MYR	A	403	-	-	0/3/3/13	0/0/0/0
4	ANP	B	400	3	-	0/13/38/38	0/3/3/3
5	MYR	B	403	-	-	0/3/3/13	0/0/0/0

The worst 5 of 12 bond length outliers are listed below:

Mol	Chain	Res	Type	Atoms	Z	Observed(Å)	Ideal(Å)
4	A	400	ANP	PG-O3G	-3.90	1.45	1.56
4	B	400	ANP	PG-O3G	-3.52	1.47	1.56
4	B	400	ANP	PB-O2B	-3.30	1.47	1.56
4	A	400	ANP	PB-O2B	-3.11	1.48	1.56
4	A	400	ANP	PG-O2G	-2.81	1.49	1.56

The worst 5 of 7 bond angle outliers are listed below:

Mol	Chain	Res	Type	Atoms	Z	Observed(°)	Ideal(°)
4	B	400	ANP	O1G-PG-N3B	-4.86	104.52	111.79
4	A	400	ANP	O1G-PG-N3B	-3.65	106.33	111.79
4	A	400	ANP	O1B-PB-N3B	-3.04	107.25	111.79
4	A	400	ANP	PA-O3A-PB	-2.08	125.10	132.40
4	A	400	ANP	O3G-PG-O2G	2.04	113.16	107.61

There are no chirality outliers.

All (1) torsion outliers are listed below:

Mol	Chain	Res	Type	Atoms
4	A	400	ANP	O1B-PB-N3B-PG

There are no ring outliers.

1 monomer is involved in 1 short contact:

Mol	Chain	Res	Type	Clashes	Symm-Clashes
5	B	403	MYR	1	0

5.7 Other polymers ⓘ

There are no such residues in this entry.

5.8 Polymer linkage issues ⓘ

There are no chain breaks in this entry.

6 Fit of model and data

6.1 Protein, DNA and RNA chains

EDS was not executed - this section is therefore empty.

6.2 Non-standard residues in protein, DNA, RNA chains

EDS was not executed - this section is therefore empty.

6.3 Carbohydrates

EDS was not executed - this section is therefore empty.

6.4 Ligands

EDS was not executed - this section is therefore empty.

6.5 Other polymers

EDS was not executed - this section is therefore empty.