



# Full wwPDB X-ray Structure Validation Report ⓘ

Nov 5, 2019 – 01:43 PM EST

PDB ID : 1CF3  
Title : GLUCOSE OXIDASE FROM APERGILLUS NIGER  
Authors : Hecht, H.J.; Kalisz, H.  
Deposited on : 1999-03-23  
Resolution : 1.90 Å(reported)

This is a Full wwPDB X-ray Structure Validation Report for a publicly released PDB entry.

We welcome your comments at [validation@mail.wwpdb.org](mailto:validation@mail.wwpdb.org)

A user guide is available at

<https://www.wwpdb.org/validation/2017/XrayValidationReportHelp>

with specific help available everywhere you see the ⓘ symbol.

---

The following versions of software and data (see [references ⓘ](#)) were used in the production of this report:

MolProbity : 4.02b-467  
Mogul : 1.8.0 (224370), CSD as540be (2019)  
Xtriage (Phenix) : 1.13  
EDS : 2.4  
buster-report : 1.1.7 (2018)  
Percentile statistics : 20171227.v01 (using entries in the PDB archive December 27th 2017)  
Refmac : 5.8.0158  
CCP4 : 7.0 (Gargrove)  
Ideal geometry (proteins) : Engh & Huber (2001)  
Ideal geometry (DNA, RNA) : Parkinson et al. (1996)  
Validation Pipeline (wwPDB-VP) : 2.4

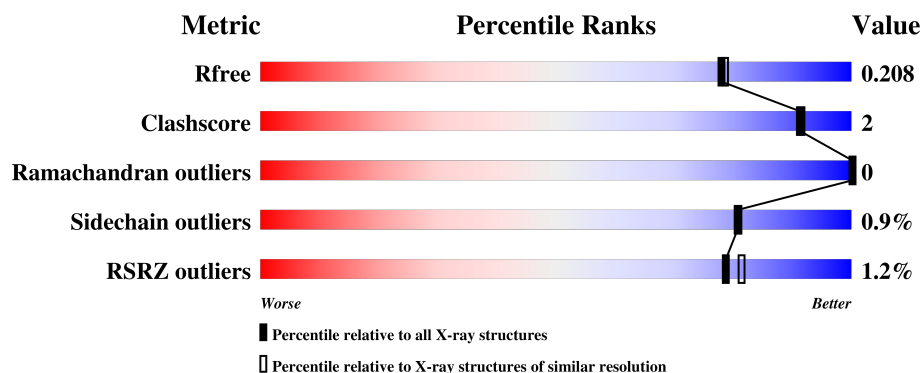
# 1 Overall quality at a glance

The following experimental techniques were used to determine the structure:

*X-RAY DIFFRACTION*

The reported resolution of this entry is 1.90 Å.

Percentile scores (ranging between 0-100) for global validation metrics of the entry are shown in the following graphic. The table shows the number of entries on which the scores are based.



Metric	Whole archive (#Entries)	Similar resolution (#Entries, resolution range(Å))
$R_{free}$	111664	5502 (1.90-1.90)
Clashscore	122126	6115 (1.90-1.90)
Ramachandran outliers	120053	6048 (1.90-1.90)
Sidechain outliers	120020	6048 (1.90-1.90)
RSRZ outliers	108989	5379 (1.90-1.90)

The table below summarises the geometric issues observed across the polymeric chains and their fit to the electron density. The red, orange, yellow and green segments on the lower bar indicate the fraction of residues that contain outliers for  $\geq 3$ , 2, 1 and 0 types of geometric quality criteria. A grey segment represents the fraction of residues that are not modelled. The numeric value for each fraction is indicated below the corresponding segment, with a dot representing fractions  $\leq 5\%$ . The upper red bar (where present) indicates the fraction of residues that have poor fit to the electron density. The numeric value is given above the bar.

Mol	Chain	Length	Quality of chain
1	A	583	<div> <div></div> <div>93%</div> <div>7%</div> </div>

## 2 Entry composition [i](#)

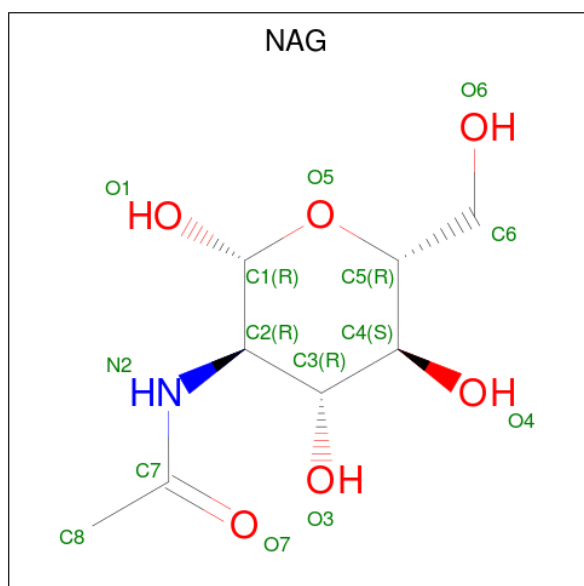
There are 6 unique types of molecules in this entry. The entry contains 4917 atoms, of which 0 are hydrogens and 0 are deuteriums.

In the tables below, the ZeroOcc column contains the number of atoms modelled with zero occupancy, the AltConf column contains the number of residues with at least one atom in alternate conformation and the Trace column contains the number of residues modelled with at most 2 atoms.

- Molecule 1 is a protein called PROTEIN (GLUCOSE OXIDASE).

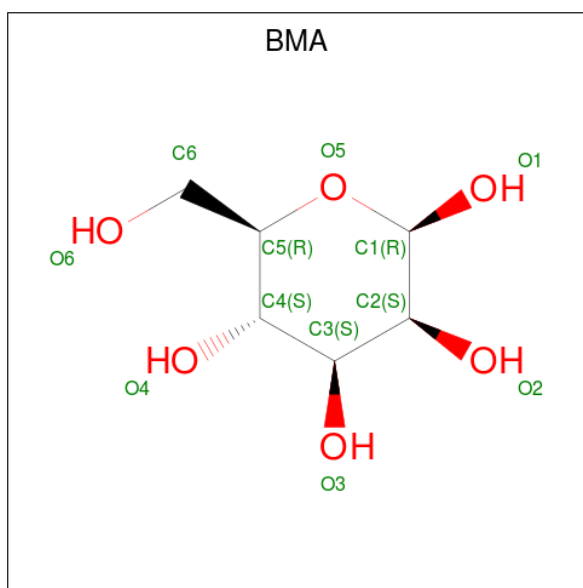
Mol	Chain	Residues	Atoms					ZeroOcc	AltConf	Trace
1	A	581	Total	C	N	O	S	0	0	0
			4452	2801	764	873	14			

- Molecule 2 is N-ACETYL-D-GLUCOSAMINE (three-letter code: NAG) (formula:  $C_8H_{15}NO_6$ ).



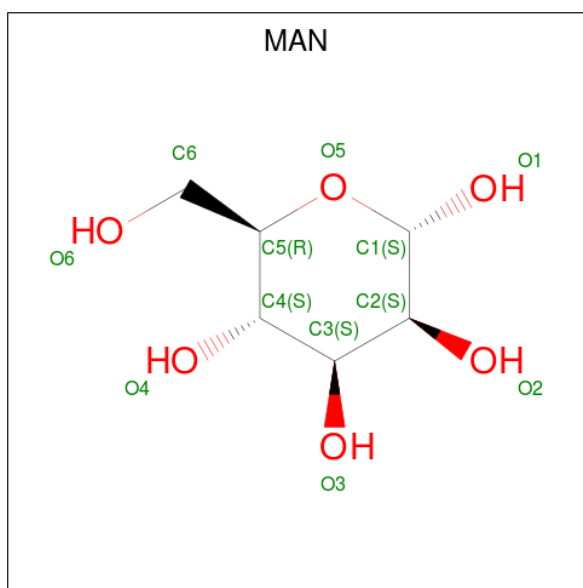
Mol	Chain	Residues	Atoms				ZeroOcc	AltConf
2	A	1	Total	C	N	O	0	0
			14	8	1	5		
2	A	1	Total	C	N	O	0	0
			14	8	1	5		
2	A	1	Total	C	N	O	0	0
			14	8	1	5		
2	A	1	Total	C	N	O	0	0
			14	8	1	5		
2	A	1	Total	C	N	O	0	0
			14	8	1	5		

- Molecule 3 is BETA-D-MANNOSE (three-letter code: BMA) (formula:  $C_6H_{12}O_6$ ).



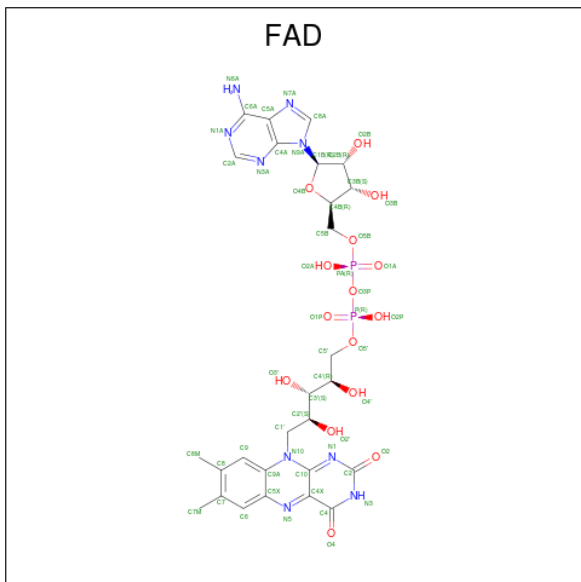
Mol	Chain	Residues	Atoms			ZeroOcc	AltConf
3	A	1	Total	C	O	0	0
			11	6	5		

- Molecule 4 is ALPHA-D-MANNOSE (three-letter code: MAN) (formula:  $C_6H_{12}O_6$ ).



Mol	Chain	Residues	Atoms			ZeroOcc	AltConf
4	A	1	Total	C	O	0	0
			11	6	5		
4	A	1	Total	C	O	0	0
			11	6	5		

- Molecule 5 is FLAVIN-ADENINE DINUCLEOTIDE (three-letter code: FAD) (formula:  $\text{C}_{27}\text{H}_{33}\text{N}_9\text{O}_{15}\text{P}_2$ ).



Mol	Chain	Residues	Atoms					ZeroOcc	AltConf
5	A	1	Total	C	N	O	P	0	0
			53	27	9	15	2		

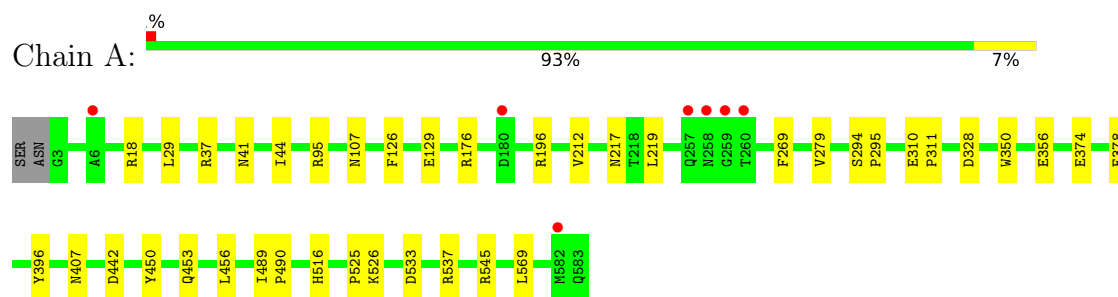
- Molecule 6 is water.

Mol	Chain	Residues	Atoms	ZeroOcc	AltConf
6	A	309	Total O 309 309	0	0

### 3 Residue-property plots

These plots are drawn for all protein, RNA and DNA chains in the entry. The first graphic for a chain summarises the proportions of the various outlier classes displayed in the second graphic. The second graphic shows the sequence view annotated by issues in geometry and electron density. Residues are color-coded according to the number of geometric quality criteria for which they contain at least one outlier: green = 0, yellow = 1, orange = 2 and red = 3 or more. A red dot above a residue indicates a poor fit to the electron density ( $RSRZ > 2$ ). Stretches of 2 or more consecutive residues without any outlier are shown as a green connector. Residues present in the sample, but not in the model, are shown in grey.

- Molecule 1: PROTEIN (GLUCOSE OXIDASE)



## 4 Data and refinement statistics

Property	Value	Source
Space group	P 31 2 1	Depositor
Cell constants a, b, c, $\alpha$ , $\beta$ , $\gamma$	67.54Å 67.54Å 215.38Å 90.00° 90.00° 120.00°	Depositor
Resolution (Å)	20.00 – 1.90 19.67 – 1.90	Depositor EDS
% Data completeness (in resolution range)	87.7 (20.00-1.90) 87.9 (19.67-1.90)	Depositor EDS
$R_{merge}$	0.05	Depositor
$R_{sym}$	(Not available)	Depositor
$\langle I/\sigma(I) \rangle$ <sup>1</sup>	7.17 (at 1.90Å)	Xtriage
Refinement program	REFMAC	Depositor
R, $R_{free}$	0.190 , 0.240 0.163 , 0.208	Depositor DCC
$R_{free}$ test set	2026 reflections (5.02%)	wwPDB-VP
Wilson B-factor (Å <sup>2</sup> )	19.6	Xtriage
Anisotropy	0.476	Xtriage
Bulk solvent $k_{sol}$ (e/Å <sup>3</sup> ), $B_{sol}$ (Å <sup>2</sup> )	0.34 , 53.2	EDS
L-test for twinning <sup>2</sup>	$\langle  L  \rangle = 0.50$ , $\langle L^2 \rangle = 0.34$	Xtriage
Estimated twinning fraction	0.021 for -h,-k,l	Xtriage
$F_o, F_c$ correlation	0.96	EDS
Total number of atoms	4917	wwPDB-VP
Average B, all atoms (Å <sup>2</sup> )	24.0	wwPDB-VP

Xtriage's analysis on translational NCS is as follows: *The largest off-origin peak in the Patterson function is 5.88% of the height of the origin peak. No significant pseudotranslation is detected.*

<sup>1</sup>Intensities estimated from amplitudes.

<sup>2</sup>Theoretical values of  $\langle |L| \rangle$ ,  $\langle L^2 \rangle$  for acentric reflections are 0.5, 0.333 respectively for untwinned datasets, and 0.375, 0.2 for perfectly twinned datasets.

## 5 Model quality [i](#)

### 5.1 Standard geometry [i](#)

Bond lengths and bond angles in the following residue types are not validated in this section: BMA, NAG, FAD, MAN

The Z score for a bond length (or angle) is the number of standard deviations the observed value is removed from the expected value. A bond length (or angle) with  $|Z| > 5$  is considered an outlier worth inspection. RMSZ is the root-mean-square of all Z scores of the bond lengths (or angles).

Mol	Chain	Bond lengths		Bond angles	
		RMSZ	$\# Z  > 5$	RMSZ	$\# Z  > 5$
1	A	0.46	0/4560	1.03	15/6219 (0.2%)

There are no bond length outliers.

All (15) bond angle outliers are listed below:

Mol	Chain	Res	Type	Atoms	Z	Observed(°)	Ideal(°)
1	A	18	ARG	CD-NE-CZ	8.40	135.36	123.60
1	A	18	ARG	NE-CZ-NH1	6.42	123.51	120.30
1	A	442	ASP	CB-CG-OD1	6.23	123.91	118.30
1	A	450	TYR	CB-CG-CD2	-6.18	117.29	121.00
1	A	396	TYR	CB-CG-CD2	-5.97	117.42	121.00
1	A	176	ARG	NE-CZ-NH2	-5.64	117.48	120.30
1	A	450	TYR	CB-CG-CD1	5.55	124.33	121.00
1	A	196	ARG	NE-CZ-NH2	-5.40	117.60	120.30
1	A	328	ASP	CB-CG-OD1	5.38	123.14	118.30
1	A	95	ARG	NE-CZ-NH1	5.31	122.95	120.30
1	A	396	TYR	CB-CG-CD1	5.29	124.17	121.00
1	A	537	ARG	NE-CZ-NH2	-5.24	117.68	120.30
1	A	356	GLU	OE1-CD-OE2	-5.15	117.12	123.30
1	A	533	ASP	CB-CG-OD1	5.12	122.91	118.30
1	A	545	ARG	NE-CZ-NH1	5.02	122.81	120.30

There are no chirality outliers.

There are no planarity outliers.

### 5.2 Too-close contacts [i](#)

In the following table, the Non-H and H(model) columns list the number of non-hydrogen atoms and hydrogen atoms in the chain respectively. The H(added) column lists the number of hydrogen



atoms added and optimized by MolProbity. The Clashes column lists the number of clashes within the asymmetric unit, whereas Symm-Clashes lists symmetry related clashes.

Mol	Chain	Non-H	H(model)	H(added)	Clashes	Symm-Clashes
1	A	4452	0	4240	15	0
2	A	70	0	63	0	0
3	A	11	0	9	0	0
4	A	22	0	19	0	0
5	A	53	0	31	3	0
6	A	309	0	0	2	0
All	All	4917	0	4362	16	0

The all-atom clashscore is defined as the number of clashes found per 1000 atoms (including hydrogen atoms). The all-atom clashscore for this structure is 2.

All (16) close contacts within the same asymmetric unit are listed below, sorted by their clash magnitude.

Atom-1	Atom-2	Interatomic distance (Å)	Clash overlap (Å)
1:A:269:PHE:HE1	1:A:279:VAL:HG23	1.57	0.69
1:A:310:GLU:HB3	1:A:311:PRO:HD3	1.83	0.60
1:A:107:ASN:HB2	5:A:600:FAD:C5X	2.36	0.56
1:A:41:ASN:HB3	1:A:44:ILE:HD12	1.90	0.53
1:A:107:ASN:HB2	5:A:600:FAD:N5	2.24	0.53
1:A:37:ARG:HH21	1:A:569:LEU:HD22	1.75	0.50
1:A:126:PHE:O	1:A:525:PRO:HD3	2.15	0.46
1:A:453:GLN:HB3	1:A:456:LEU:HD12	1.97	0.45
1:A:526:LYS:HE3	6:A:636:HOH:O	2.17	0.45
1:A:29:LEU:HD23	1:A:29:LEU:C	2.38	0.43
1:A:129:GLU:HG3	6:A:648:HOH:O	2.17	0.43
1:A:294:SER:N	1:A:295:PRO:HD2	2.35	0.42
1:A:374:GLU:O	1:A:378:GLU:HG3	2.19	0.42
5:A:600:FAD:H1'1	5:A:600:FAD:H9	1.84	0.41
1:A:212:VAL:HG22	1:A:350:TRP:HB2	2.03	0.41
1:A:489:ILE:HA	1:A:490:PRO:C	2.41	0.40

There are no symmetry-related clashes.

## 5.3 Torsion angles

### 5.3.1 Protein backbone

In the following table, the Percentiles column shows the percent Ramachandran outliers of the chain as a percentile score with respect to all X-ray entries followed by that with respect to entries

of similar resolution.

The Analysed column shows the number of residues for which the backbone conformation was analysed, and the total number of residues.

Mol	Chain	Analysed	Favoured	Allowed	Outliers	Percentiles	
1	A	579/583 (99%)	560 (97%)	19 (3%)	0	100	100

There are no Ramachandran outliers to report.

### 5.3.2 Protein sidechains ⓘ

In the following table, the Percentiles column shows the percent sidechain outliers of the chain as a percentile score with respect to all X-ray entries followed by that with respect to entries of similar resolution.

The Analysed column shows the number of residues for which the sidechain conformation was analysed, and the total number of residues.

Mol	Chain	Analysed	Rotameric	Outliers	Percentiles	
1	A	466/468 (100%)	462 (99%)	4 (1%)	81	81

All (4) residues with a non-rotameric sidechain are listed below:

Mol	Chain	Res	Type
1	A	217	ASN
1	A	219	LEU
1	A	407	ASN
1	A	516	HIS

Some sidechains can be flipped to improve hydrogen bonding and reduce clashes. All (3) such sidechains are listed below:

Mol	Chain	Res	Type
1	A	142	GLN
1	A	407	ASN
1	A	493	ASN

### 5.3.3 RNA ⓘ

There are no RNA molecules in this entry.

## 5.4 Non-standard residues in protein, DNA, RNA chains [i](#)

There are no non-standard protein/DNA/RNA residues in this entry.

## 5.5 Carbohydrates [i](#)

There are no carbohydrates in this entry.

## 5.6 Ligand geometry [i](#)

9 ligands are modelled in this entry.

In the following table, the Counts columns list the number of bonds (or angles) for which Mogul statistics could be retrieved, the number of bonds (or angles) that are observed in the model and the number of bonds (or angles) that are defined in the Chemical Component Dictionary. The Link column lists molecule types, if any, to which the group is linked. The Z score for a bond length (or angle) is the number of standard deviations the observed value is removed from the expected value. A bond length (or angle) with  $|Z| > 2$  is considered an outlier worth inspection. RMSZ is the root-mean-square of all Z scores of the bond lengths (or angles).

Mol	Type	Chain	Res	Link	Bond lengths			Bond angles		
					Counts	RMSZ	$\# Z  > 2$	Counts	RMSZ	$\# Z  > 2$
5	FAD	A	600	-	50,58,58	1.87	10 (20%)	58,89,89	1.81	12 (20%)
2	NAG	A	601	1,2	14,14,15	1.19	1 (7%)	17,19,21	0.79	0
2	NAG	A	602	3,2	14,14,15	1.10	1 (7%)	17,19,21	1.03	1 (5%)
2	NAG	A	603	1	14,14,15	1.19	1 (7%)	17,19,21	1.20	2 (11%)
2	NAG	A	604	1	14,14,15	1.18	1 (7%)	17,19,21	1.93	3 (17%)
2	NAG	A	605	1	14,14,15	1.28	1 (7%)	17,19,21	1.01	1 (5%)
3	BMA	A	613	2,4	11,11,12	0.71	0	15,15,17	0.99	0
4	MAN	A	615	3,4	11,11,12	1.07	1 (9%)	15,15,17	1.58	2 (13%)
4	MAN	A	616	4	11,11,12	0.77	0	15,15,17	1.43	1 (6%)

In the following table, the Chirals column lists the number of chiral outliers, the number of chiral centers analysed, the number of these observed in the model and the number defined in the Chemical Component Dictionary. Similar counts are reported in the Torsion and Rings columns. '-' means no outliers of that kind were identified.

Mol	Type	Chain	Res	Link	Chirals	Torsions	Rings
5	FAD	A	600	-	-	4/30/50/50	0/6/6/6
2	NAG	A	601	1,2	-	0/6/23/26	0/1/1/1
2	NAG	A	602	3,2	-	1/6/23/26	0/1/1/1
2	NAG	A	603	1	-	4/6/23/26	0/1/1/1

*Continued on next page...*

*Continued from previous page...*

Mol	Type	Chain	Res	Link	Chirals	Torsions	Rings
2	NAG	A	604	1	-	1/6/23/26	0/1/1/1
2	NAG	A	605	1	-	0/6/23/26	0/1/1/1
3	BMA	A	613	2,4	-	0/2/19/22	0/1/1/1
4	MAN	A	615	3,4	-	0/2/19/22	0/1/1/1
4	MAN	A	616	4	-	1/2/19/22	0/1/1/1

All (16) bond length outliers are listed below:

Mol	Chain	Res	Type	Atoms	Z	Observed(Å)	Ideal(Å)
5	A	600	FAD	C4X-C10	6.85	1.45	1.38
5	A	600	FAD	O4B-C1B	4.41	1.47	1.41
5	A	600	FAD	PA-O2A	-4.00	1.36	1.55
2	A	605	NAG	O7-C7	-3.98	1.14	1.23
2	A	601	NAG	O7-C7	-3.59	1.15	1.23
5	A	600	FAD	O5'-C5'	3.58	1.58	1.44
2	A	603	NAG	O7-C7	-3.54	1.15	1.23
2	A	604	NAG	O7-C7	-3.46	1.15	1.23
2	A	602	NAG	O7-C7	-3.39	1.15	1.23
5	A	600	FAD	C2-N1	-3.08	1.32	1.38
5	A	600	FAD	P-O2P	-2.97	1.41	1.55
5	A	600	FAD	C9A-N10	2.91	1.42	1.38
5	A	600	FAD	C4-N3	2.66	1.37	1.33
4	A	615	MAN	C1-C2	2.28	1.57	1.52
5	A	600	FAD	C2-N3	2.25	1.42	1.38
5	A	600	FAD	C4-C4X	2.08	1.45	1.41

All (22) bond angle outliers are listed below:

Mol	Chain	Res	Type	Atoms	Z	Observed(°)	Ideal(°)
5	A	600	FAD	C4-N3-C2	5.17	119.50	115.14
5	A	600	FAD	C1'-N10-C10	5.07	123.43	118.46
2	A	604	NAG	O5-C1-C2	-4.71	103.96	111.36
2	A	604	NAG	C4-C3-C2	-4.37	104.61	111.02
4	A	616	MAN	C1-O5-C5	4.20	117.92	112.20
5	A	600	FAD	C5A-C6A-N6A	3.95	126.58	120.38
5	A	600	FAD	C4X-C4-N3	-3.87	118.09	123.47
5	A	600	FAD	C5'-C4'-C3'	-3.74	104.78	112.17
5	A	600	FAD	C2A-N1A-C6A	3.54	124.90	118.77
2	A	604	NAG	C2-N2-C7	3.48	127.91	122.92
4	A	615	MAN	C1-O5-C5	3.33	116.72	112.20
5	A	600	FAD	C6-C5X-N5	-3.19	115.46	118.97
5	A	600	FAD	C5A-C6A-N1A	-3.06	113.12	120.31

*Continued on next page...*

*Continued from previous page...*

Mol	Chain	Res	Type	Atoms	Z	Observed(°)	Ideal(°)
2	A	603	NAG	O5-C1-C2	-2.97	106.70	111.36
5	A	600	FAD	C1'-N10-C9A	-2.90	115.79	118.31
2	A	602	NAG	O5-C1-C2	-2.40	107.59	111.36
2	A	603	NAG	C4-C3-C2	-2.38	107.54	111.02
5	A	600	FAD	C4B-O4B-C1B	-2.28	107.45	109.83
2	A	605	NAG	O5-C1-C2	-2.24	107.84	111.36
4	A	615	MAN	O3-C3-C4	2.10	115.22	110.34
5	A	600	FAD	C9A-C5X-N5	2.06	125.20	122.34
5	A	600	FAD	N3A-C2A-N1A	-2.05	125.37	128.68

There are no chirality outliers.

All (11) torsion outliers are listed below:

Mol	Chain	Res	Type	Atoms
5	A	600	FAD	PA-O3P-P-O5'
2	A	603	NAG	C4-C5-C6-O6
2	A	603	NAG	O5-C5-C6-O6
4	A	616	MAN	O5-C5-C6-O6
2	A	604	NAG	C3-C2-N2-C7
2	A	602	NAG	C3-C2-N2-C7
5	A	600	FAD	P-O3P-PA-O1A
5	A	600	FAD	P-O3P-PA-O2A
5	A	600	FAD	O4B-C4B-C5B-O5B
2	A	603	NAG	C1-C2-N2-C7
2	A	603	NAG	C3-C2-N2-C7

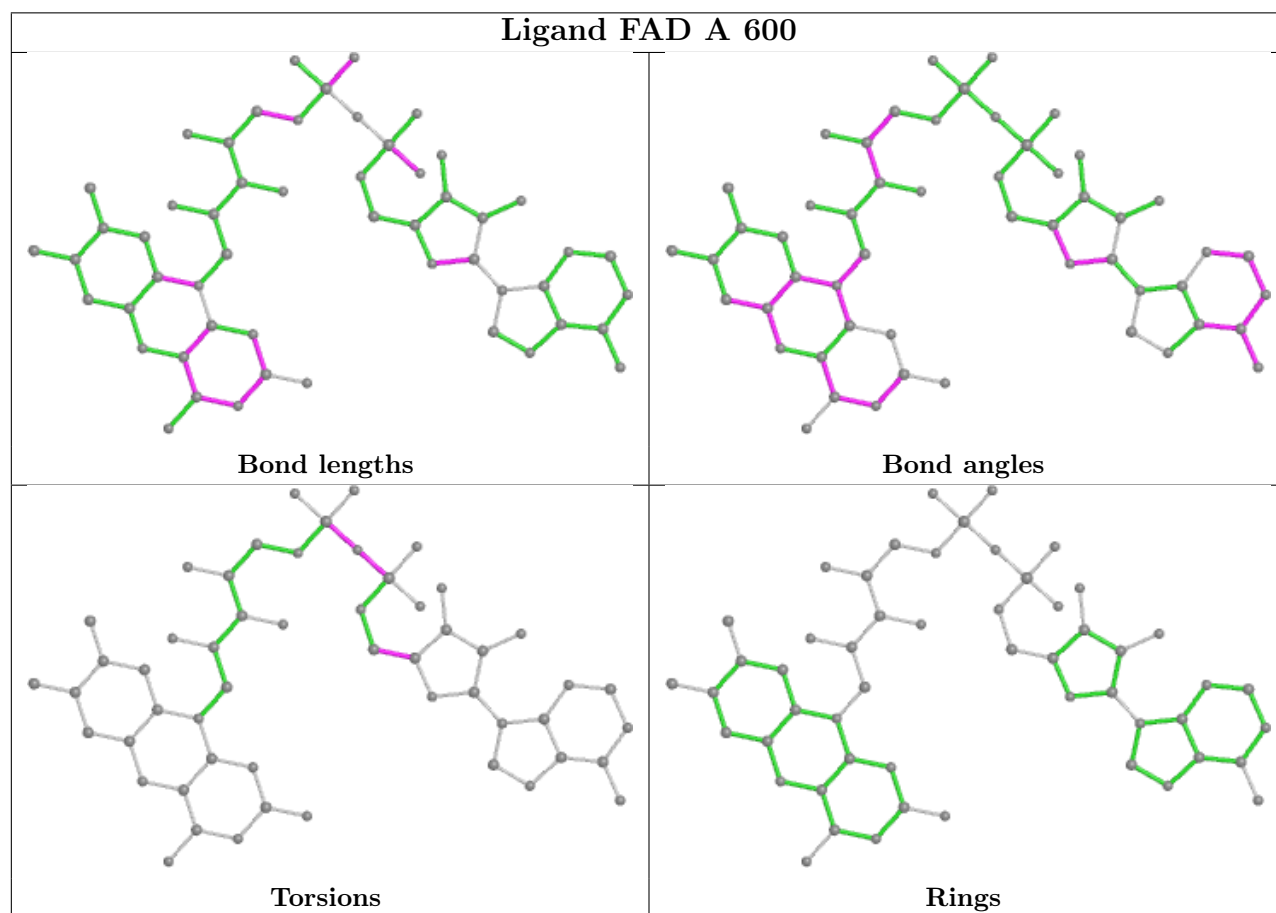
There are no ring outliers.

1 monomer is involved in 3 short contacts:

Mol	Chain	Res	Type	Clashes	Symm-Clashes
5	A	600	FAD	3	0

The following is a two-dimensional graphical depiction of Mogul quality analysis of bond lengths, bond angles, torsion angles, and ring geometry for all instances of the Ligand of Interest. In addition, ligands with molecular weight > 250 and outliers as shown on the validation Tables will also be included. For torsion angles, if less than 5% of the Mogul distribution of torsion angles is within 10 degrees of the torsion angle in question, then that torsion angle is considered an outlier. Any bond that is central to one or more torsion angles identified as an outlier by Mogul will be highlighted in the graph. For rings, the root-mean-square deviation (RMSD) between the ring in question and similar rings identified by Mogul is calculated over all ring torsion angles. If the average RMSD is greater than 60 degrees and the minimal RMSD between the ring in question and any Mogul-identified rings is also greater than 60 degrees, then that ring is considered an outlier.

The outliers are highlighted in purple. The color gray indicates Mogul did not find sufficient equivalents in the CSD to analyse the geometry.



## 5.7 Other polymers [i](#)

There are no such residues in this entry.

## 5.8 Polymer linkage issues [i](#)

There are no chain breaks in this entry.

## 6 Fit of model and data [i](#)

### 6.1 Protein, DNA and RNA chains [i](#)

In the following table, the column labelled '#RSRZ > 2' contains the number (and percentage) of RSRZ outliers, followed by percent RSRZ outliers for the chain as percentile scores relative to all X-ray entries and entries of similar resolution. The OWAB column contains the minimum, median, 95<sup>th</sup> percentile and maximum values of the occupancy-weighted average B-factor per residue. The column labelled 'Q < 0.9' lists the number of (and percentage) of residues with an average occupancy less than 0.9.

Mol	Chain	Analysed	<RSRZ>	#RSRZ>2	OWAB(Å <sup>2</sup> )	Q<0.9
1	A	581/583 (99%)	-0.34	7 (1%) 79 81	9, 22, 40, 64	0

All (7) RSRZ outliers are listed below:

Mol	Chain	Res	Type	RSRZ
1	A	260	THR	4.0
1	A	258	ASN	3.9
1	A	582	MET	3.4
1	A	257	GLN	3.2
1	A	259	GLY	2.2
1	A	180	ASP	2.2
1	A	6	ALA	2.1

### 6.2 Non-standard residues in protein, DNA, RNA chains [i](#)

There are no non-standard protein/DNA/RNA residues in this entry.

### 6.3 Carbohydrates [i](#)

There are no carbohydrates in this entry.

### 6.4 Ligands [i](#)

In the following table, the Atoms column lists the number of modelled atoms in the group and the number defined in the chemical component dictionary. The B-factors column lists the minimum, median, 95<sup>th</sup> percentile and maximum values of B factors of atoms in the group. The column labelled 'Q < 0.9' lists the number of atoms with occupancy less than 0.9.

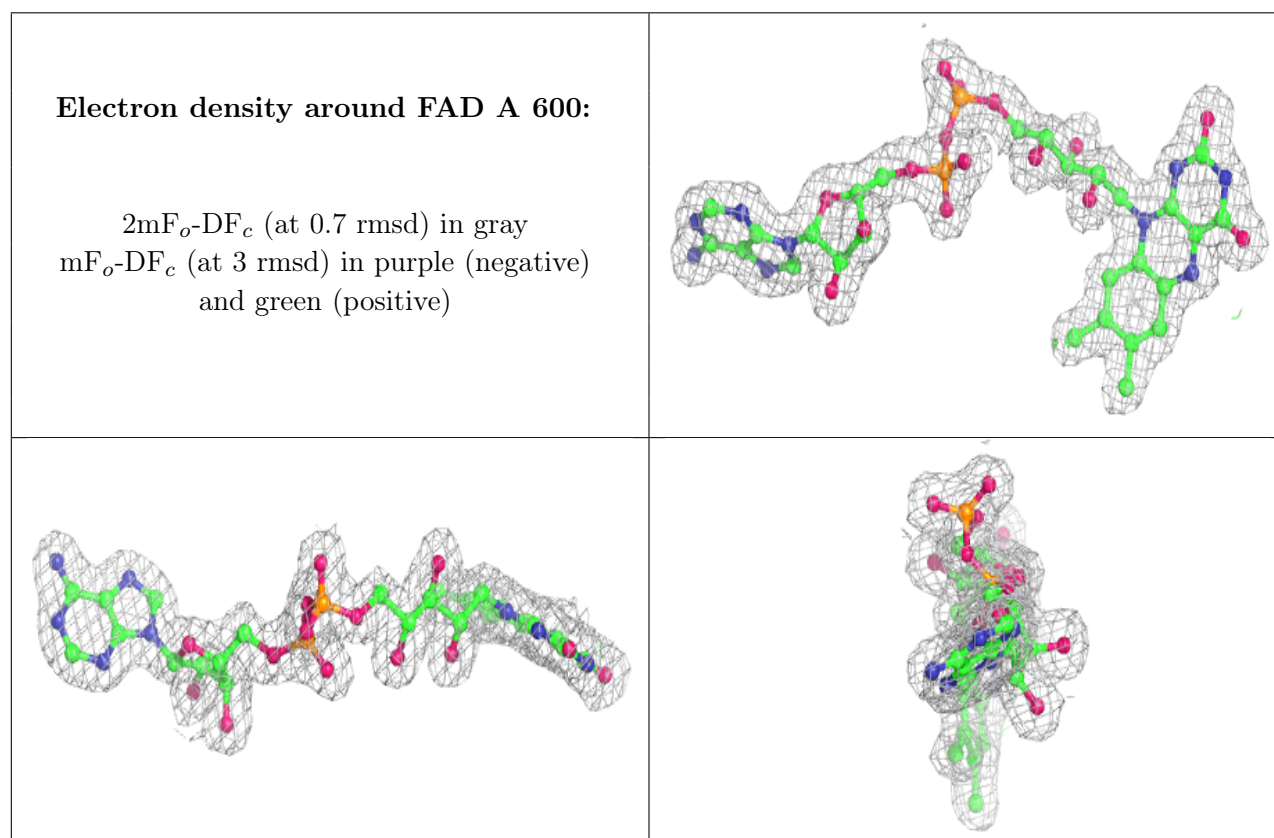
Mol	Type	Chain	Res	Atoms	RSCC	RSR	B-factors(Å <sup>2</sup> )	Q<0.9
2	NAG	A	603	14/15	0.75	0.33	49,53,55,55	0

*Continued on next page...*

*Continued from previous page...*

Mol	Type	Chain	Res	Atoms	RSCC	RSR	B-factors( $\text{\AA}^2$ )	Q<0.9
4	MAN	A	616	11/12	0.78	0.32	51,54,55,55	0
4	MAN	A	615	11/12	0.80	0.16	43,44,47,49	0
3	BMA	A	613	11/12	0.85	0.18	37,40,41,43	0
2	NAG	A	604	14/15	0.87	0.13	28,31,34,37	0
2	NAG	A	602	14/15	0.90	0.13	31,34,37,38	0
2	NAG	A	601	14/15	0.94	0.10	26,28,30,31	0
2	NAG	A	605	14/15	0.96	0.10	25,27,33,34	0
5	FAD	A	600	53/53	0.98	0.06	11,14,18,19	0

The following is a graphical depiction of the model fit to experimental electron density of all instances of the Ligand of Interest. In addition, ligands with molecular weight > 250 and outliers as shown on the geometry validation Tables will also be included. Each fit is shown from different orientation to approximate a three-dimensional view.



## 6.5 Other polymers ⓘ

There are no such residues in this entry.