



wwPDB X-ray Structure Validation Summary Report ⓘ

Feb 10, 2019 – 04:25 AM EST

PDB ID : 6CF5
Title : Crystal structure of the A/Viet Nam/1203/2004(H5N1) influenza virus hemagglutinin in complex with small molecule N-Cyclohexyltaurine
Authors : Wilson, I.A.; Kadam, R.U.
Deposited on : 2018-02-13
Resolution : 2.04 Å(reported)

This is a wwPDB X-ray Structure Validation Summary Report for a publicly released PDB entry.

We welcome your comments at validation@mail.wwpdb.org

A user guide is available at

<https://www.wwpdb.org/validation/2017/XrayValidationReportHelp>

with specific help available everywhere you see the ⓘ symbol.

The following versions of software and data (see [references ⓘ](#)) were used in the production of this report:

MolProbity : 4.02b-467
Mogul : 1.7.3 (157068), CSD as539be (2018)
Xtriage (Phenix) : 1.13
EDS : rb-20031633
Percentile statistics : 20171227.v01 (using entries in the PDB archive December 27th 2017)
Refmac : 5.8.0158
CCP4 : 7.0 (Gargrove)
Ideal geometry (proteins) : Engh & Huber (2001)
Ideal geometry (DNA, RNA) : Parkinson et al. (1996)
Validation Pipeline (wwPDB-VP) : rb-20031633

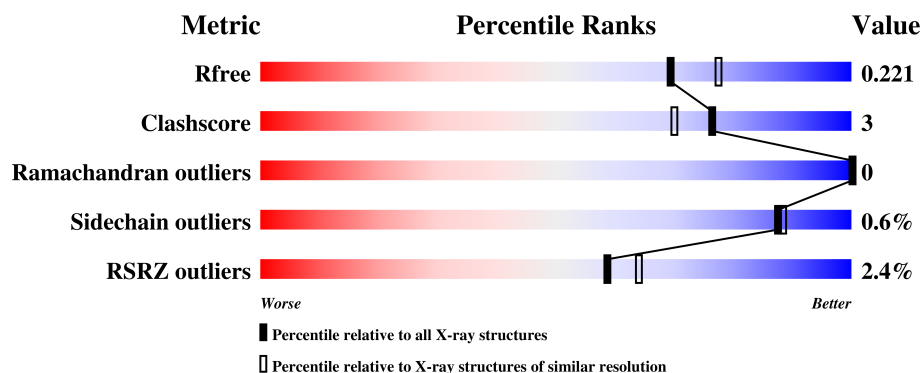
1 Overall quality at a glance ⓘ

The following experimental techniques were used to determine the structure:

X-RAY DIFFRACTION

The reported resolution of this entry is 2.04 Å.

Percentile scores (ranging between 0-100) for global validation metrics of the entry are shown in the following graphic. The table shows the number of entries on which the scores are based.




Metric	Whole archive (#Entries)	Similar resolution (#Entries, resolution range(Å))
R_{free}	111664	1449 (2.04-2.04)
Clashscore	122126	1524 (2.04-2.04)
Ramachandran outliers	120053	1512 (2.04-2.04)
Sidechain outliers	120020	1512 (2.04-2.04)
RSRZ outliers	108989	1429 (2.04-2.04)

The table below summarises the geometric issues observed across the polymeric chains and their fit to the electron density. The red, orange, yellow and green segments on the lower bar indicate the fraction of residues that contain outliers for ≥ 3 , 2, 1 and 0 types of geometric quality criteria. A grey segment represents the fraction of residues that are not modelled. The numeric value for each fraction is indicated below the corresponding segment, with a dot representing fractions $\leq 5\%$. The upper red bar (where present) indicates the fraction of residues that have poor fit to the electron density. The numeric value is given above the bar.

Mol	Chain	Length	Quality of chain
1	A	334	<div> <div>%</div> <div>91% 6% .</div> </div>
1	C	334	<div> <div>%</div> <div>87% 10% .</div> </div>
1	E	334	<div> <div>%</div> <div>87% 10% .</div> </div>
2	B	177	<div> <div>%</div> <div>93% 7% .</div> </div>
2	D	177	<div> <div>3%</div> <div>92% 7% .</div> </div>

Continued on next page...

Continued from previous page...

Mol	Chain	Length	Quality of chain
2	F	177	

The following table lists non-polymeric compounds, carbohydrate monomers and non-standard residues in protein, DNA, RNA chains that are outliers for geometric or electron-density-fit criteria:

Mol	Type	Chain	Res	Chirality	Geometry	Clashes	Electron density
4	NAG	A	403	-	-	-	X
4	NAG	C	402	-	-	-	X

2 Entry composition

There are 7 unique types of molecules in this entry. The entry contains 13578 atoms, of which 0 are hydrogens and 0 are deuteriums.

In the tables below, the ZeroOcc column contains the number of atoms modelled with zero occupancy, the AltConf column contains the number of residues with at least one atom in alternate conformation and the Trace column contains the number of residues modelled with at most 2 atoms.

- Molecule 1 is a protein called Hemagglutinin.

Mol	Chain	Residues	Atoms					ZeroOcc	AltConf	Trace
1	A	324	Total	C	N	O	S	0	2	0
			2579	1629	446	489	15			
1	C	323	Total	C	N	O	S	0	0	0
			2560	1618	442	485	15			
1	E	323	Total	C	N	O	S	0	3	0
			2576	1630	444	486	16			

There are 12 discrepancies between the modelled and reference sequences:

Chain	Residue	Modelled	Actual	Comment	Reference
A	7	ALA	-	expression tag	UNP Q5EP31
A	8	ASP	-	expression tag	UNP Q5EP31
A	9	PRO	-	expression tag	UNP Q5EP31
A	10	GLY	-	expression tag	UNP Q5EP31
C	7	ALA	-	expression tag	UNP Q5EP31
C	8	ASP	-	expression tag	UNP Q5EP31
C	9	PRO	-	expression tag	UNP Q5EP31
C	10	GLY	-	expression tag	UNP Q5EP31
E	7	ALA	-	expression tag	UNP Q5EP31
E	8	ASP	-	expression tag	UNP Q5EP31
E	9	PRO	-	expression tag	UNP Q5EP31
E	10	GLY	-	expression tag	UNP Q5EP31

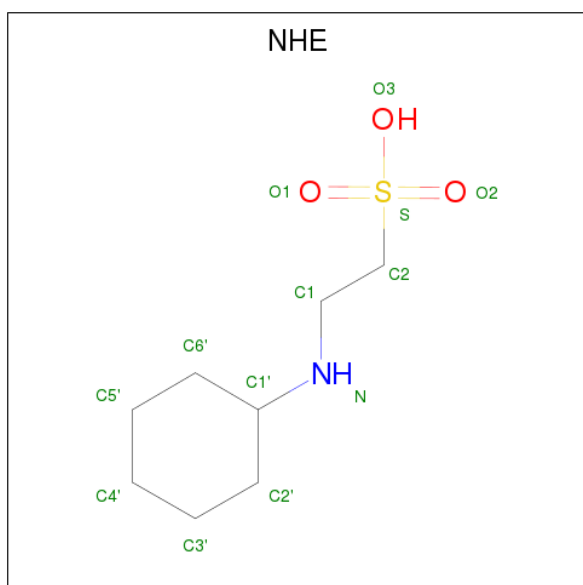
- Molecule 2 is a protein called Hemagglutinin.

Mol	Chain	Residues	Atoms					ZeroOcc	AltConf	Trace
2	B	176	Total	C	N	O	S	0	1	0
			1427	888	247	284	8			
2	D	176	Total	C	N	O	S	0	2	0
			1433	891	247	286	9			
2	F	175	Total	C	N	O	S	0	1	0
			1423	886	246	283	8			

There are 9 discrepancies between the modelled and reference sequences:

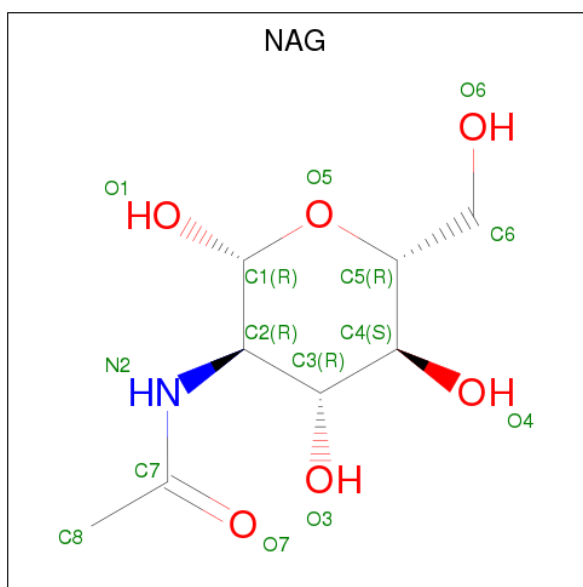
Chain	Residue	Modelled	Actual	Comment	Reference
B	175	SER	-	expression tag	UNP Q6DQ18
B	176	GLY	-	expression tag	UNP Q6DQ18
B	177	ARG	-	expression tag	UNP Q6DQ18
D	175	SER	-	expression tag	UNP Q6DQ18
D	176	GLY	-	expression tag	UNP Q6DQ18
D	177	ARG	-	expression tag	UNP Q6DQ18
F	175	SER	-	expression tag	UNP Q6DQ18
F	176	GLY	-	expression tag	UNP Q6DQ18
F	177	ARG	-	expression tag	UNP Q6DQ18

- Molecule 3 is 2-[N-CYCLOHEXYLAMINO]ETHANE SULFONIC ACID (three-letter code: NHE) (formula: $C_8H_{17}NO_3S$).



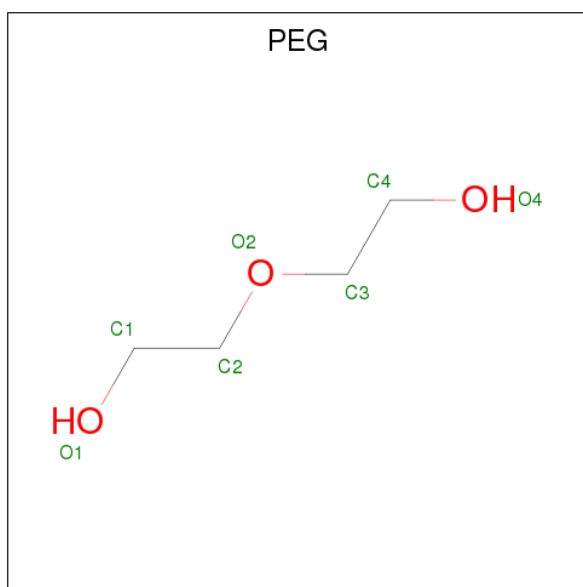
Mol	Chain	Residues	Atoms					ZeroOcc	AltConf
3	A	1	Total	C	N	O	S	0	0
			13	8	1	3	1		
3	C	1	Total	C	N	O	S	0	0
			13	8	1	3	1		
3	E	1	Total	C	N	O	S	0	0
			13	8	1	3	1		

- Molecule 4 is N-ACETYL-D-GLUCOSAMINE (three-letter code: NAG) (formula: $C_8H_{15}NO_6$).



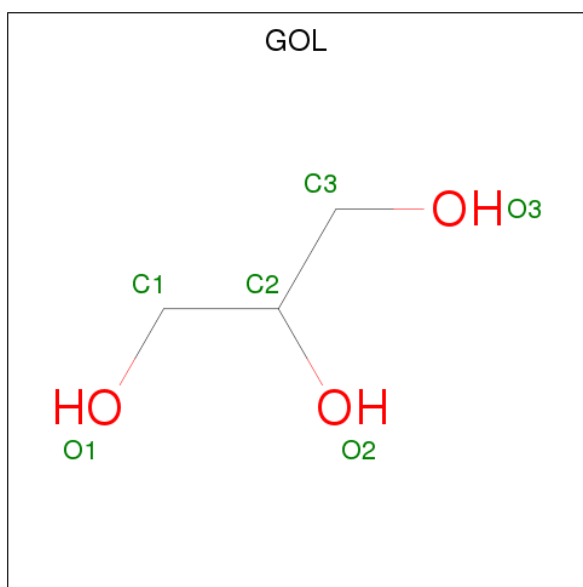
Mol	Chain	Residues	Atoms				ZeroOcc	AltConf
4	A	1	Total	C	N	O	0	0
			14	8	1	5		
4	A	1	Total	C	N	O	0	0
			14	8	1	5		
4	A	1	Total	C	N	O	0	0
			14	8	1	5		
4	C	1	Total	C	N	O	0	0
			14	8	1	5		
4	C	1	Total	C	N	O	0	0
			14	8	1	5		
4	C	1	Total	C	N	O	0	0
			14	8	1	5		
4	E	1	Total	C	N	O	0	0
			14	8	1	5		
4	E	1	Total	C	N	O	0	0
			14	8	1	5		

- Molecule 5 is DI(HYDROXYETHYL)ETHER (three-letter code: PEG) (formula: C₄H₁₀O₃).



Mol	Chain	Residues	Atoms			ZeroOcc	AltConf
5	A	1	Total	C	O	0	0
			7	4	3		
5	A	1	Total	C	O	0	0
			7	4	3		
5	A	1	Total	C	O	0	0
			7	4	3		
5	B	1	Total	C	O	0	0
			7	4	3		
5	B	1	Total	C	O	0	0
			7	4	3		
5	C	1	Total	C	O	0	0
			7	4	3		
5	D	1	Total	C	O	0	0
			7	4	3		
5	D	1	Total	C	O	0	0
			7	4	3		
5	E	1	Total	C	O	0	0
			7	4	3		

- Molecule 6 is GLYCEROL (three-letter code: GOL) (formula: $C_3H_8O_3$).

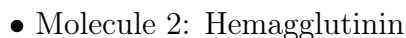
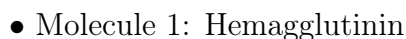
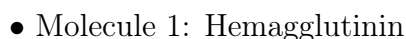


Mol	Chain	Residues	Atoms			ZeroOcc	AltConf
6	A	1	Total	C	O	0	0
			6	3	3		
6	C	1	Total	C	O	0	0
			6	3	3		
6	E	1	Total	C	O	0	0
			6	3	3		
6	E	1	Total	C	O	0	0
			6	3	3		

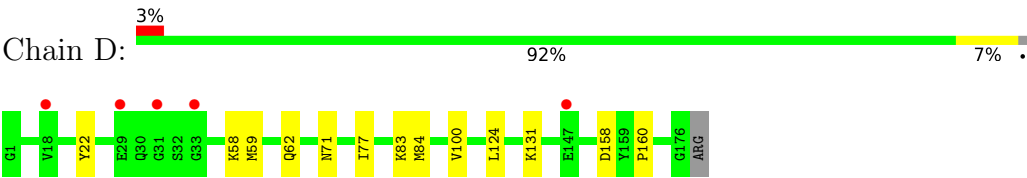
- Molecule 7 is water.

Mol	Chain	Residues	Atoms		ZeroOcc	AltConf
7	A	335	Total	O	0	0
			335	335		
7	B	124	Total	O	0	0
			124	124		
7	C	311	Total	O	0	0
			311	311		
7	D	151	Total	O	0	0
			151	151		
7	E	283	Total	O	0	0
			283	283		
7	F	124	Total	O	0	0
			124	124		

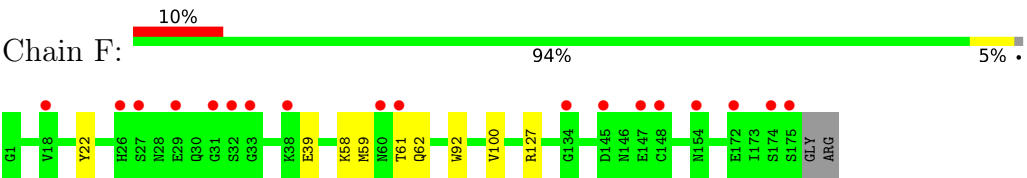
- Molecule 1: Hemagglutinin



● Molecule 2: Hemagglutinin



● Molecule 2: Hemagglutinin



4 Data and refinement statistics

Property	Value	Source
Space group	P 1 21 1	Depositor
Cell constants a, b, c, α , β , γ	72.58Å 232.98Å 72.63Å 90.00° 118.91° 90.00°	Depositor
Resolution (Å)	37.58 – 2.04 37.58 – 2.04	Depositor EDS
% Data completeness (in resolution range)	98.3 (37.58-2.04) 98.3 (37.58-2.04)	Depositor EDS
R_{merge}	(Not available)	Depositor
R_{sym}	0.04	Depositor
$\langle I/\sigma(I) \rangle$ ¹	6.17 (at 2.03Å)	Xtriage
Refinement program	PHENIX 1.12_2829	Depositor
R, R_{free}	0.191 , 0.222 0.192 , 0.221	Depositor DCC
R_{free} test set	6500 reflections (4.93%)	wwPDB-VP
Wilson B-factor (Å ²)	24.4	Xtriage
Anisotropy	0.383	Xtriage
Bulk solvent k_{sol} (e/Å ³), B_{sol} (Å ²)	0.35 , 54.9	EDS
L-test for twinning ²	$\langle L \rangle = 0.49$, $\langle L^2 \rangle = 0.32$	Xtriage
Estimated twinning fraction	0.006 for -h-l,k,h 0.006 for l,k,-h-l 0.021 for h,-k,-h-l 0.021 for -h-l,-k,l 0.023 for l,-k,h	Xtriage
F_o, F_c correlation	0.95	EDS
Total number of atoms	13578	wwPDB-VP
Average B, all atoms (Å ²)	30.0	wwPDB-VP

Xtriage's analysis on translational NCS is as follows: *The largest off-origin peak in the Patterson function is 3.22% of the height of the origin peak. No significant pseudotranslation is detected.*

¹Intensities estimated from amplitudes.

²Theoretical values of $\langle |L| \rangle$, $\langle L^2 \rangle$ for acentric reflections are 0.5, 0.333 respectively for untwinned datasets, and 0.375, 0.2 for perfectly twinned datasets.

5 Model quality [i](#)

5.1 Standard geometry [i](#)

Bond lengths and bond angles in the following residue types are not validated in this section: NHE, GOL, PEG, NAG

The Z score for a bond length (or angle) is the number of standard deviations the observed value is removed from the expected value. A bond length (or angle) with $|Z| > 5$ is considered an outlier worth inspection. RMSZ is the root-mean-square of all Z scores of the bond lengths (or angles).

Mol	Chain	Bond lengths		Bond angles	
		RMSZ	# Z >5	RMSZ	# Z >5
1	A	0.27	0/2648	0.48	0/3596
1	C	0.26	0/2623	0.47	0/3562
1	E	0.26	0/2648	0.47	0/3595
2	B	0.26	0/1457	0.43	0/1958
2	D	0.27	0/1466	0.43	0/1969
2	F	0.26	0/1453	0.43	0/1953
All	All	0.26	0/12295	0.46	0/16633

There are no bond length outliers.

There are no bond angle outliers.

There are no chirality outliers.

There are no planarity outliers.

5.2 Too-close contacts [i](#)

In the following table, the Non-H and H(model) columns list the number of non-hydrogen atoms and hydrogen atoms in the chain respectively. The H(added) column lists the number of hydrogen atoms added and optimized by MolProbity. The Clashes column lists the number of clashes within the asymmetric unit, whereas Symm-Clashes lists symmetry related clashes.

Mol	Chain	Non-H	H(model)	H(added)	Clashes	Symm-Clashes
1	A	2579	0	2525	17	0
1	C	2560	0	2503	21	0
1	E	2576	0	2533	23	0
2	B	1427	0	1338	11	0
2	D	1433	0	1342	11	0
2	F	1423	0	1335	10	0
3	A	13	0	17	1	0

Continued on next page...

Continued from previous page...

Mol	Chain	Non-H	H(model)	H(added)	Clashes	Symm-Clashes
3	C	13	0	17	0	0
3	E	13	0	17	1	0
4	A	42	0	38	0	0
4	C	56	0	51	0	0
4	E	28	0	25	0	0
5	A	21	0	30	0	0
5	B	14	0	20	0	0
5	C	7	0	10	0	0
5	D	14	0	20	0	0
5	E	7	0	10	0	0
6	A	6	0	8	1	0
6	C	6	0	8	1	0
6	E	12	0	16	2	0
7	A	335	0	0	3	0
7	B	124	0	0	4	0
7	C	311	0	0	2	0
7	D	151	0	0	0	0
7	E	283	0	0	2	0
7	F	124	0	0	1	0
All	All	13578	0	11863	79	0

The all-atom clashscore is defined as the number of clashes found per 1000 atoms (including hydrogen atoms). The all-atom clashscore for this structure is 3.

The worst 5 of 79 close contacts within the same asymmetric unit are listed below, sorted by their clash magnitude.

Atom-1	Atom-2	Interatomic distance (Å)	Clash overlap (Å)
1:C:314:LEU:HA	6:C:407:GOL:H32	1.68	0.76
1:A:114:ARG:NH2	7:A:501:HOH:O	2.20	0.70
1:E:294:PHE:HZ	2:F:59:MET:HG3	1.55	0.70
1:C:185:PRO:HG2	1:C:217:ILE:HG12	1.76	0.68
1:A:25:GLN:O	1:A:313:ARG:NH2	2.26	0.67

There are no symmetry-related clashes.

5.3 Torsion angles

5.3.1 Protein backbone

In the following table, the Percentiles column shows the percent Ramachandran outliers of the chain as a percentile score with respect to all X-ray entries followed by that with respect to entries of similar resolution.

The Analysed column shows the number of residues for which the backbone conformation was analysed, and the total number of residues.

Mol	Chain	Analysed	Favoured	Allowed	Outliers	Percentiles	
1	A	324/334 (97%)	318 (98%)	6 (2%)	0	100	100
1	C	321/334 (96%)	315 (98%)	6 (2%)	0	100	100
1	E	324/334 (97%)	318 (98%)	6 (2%)	0	100	100
2	B	175/177 (99%)	172 (98%)	3 (2%)	0	100	100
2	D	176/177 (99%)	173 (98%)	3 (2%)	0	100	100
2	F	174/177 (98%)	171 (98%)	3 (2%)	0	100	100
All	All	1494/1533 (98%)	1467 (98%)	27 (2%)	0	100	100

There are no Ramachandran outliers to report.

5.3.2 Protein sidechains

In the following table, the Percentiles column shows the percent sidechain outliers of the chain as a percentile score with respect to all X-ray entries followed by that with respect to entries of similar resolution.

The Analysed column shows the number of residues for which the sidechain conformation was analysed, and the total number of residues.

Mol	Chain	Analysed	Rotameric	Outliers	Percentiles	
1	A	293/300 (98%)	291 (99%)	2 (1%)	85	86
1	C	290/300 (97%)	289 (100%)	1 (0%)	93	94
1	E	293/300 (98%)	290 (99%)	3 (1%)	78	78
2	B	151/151 (100%)	150 (99%)	1 (1%)	85	86
2	D	152/151 (101%)	151 (99%)	1 (1%)	85	86
2	F	151/151 (100%)	150 (99%)	1 (1%)	85	86
All	All	1330/1353 (98%)	1321 (99%)	9 (1%)	87	86

5 of 9 residues with a non-rotameric sidechain are listed below:

Mol	Chain	Res	Type
2	D	22	TYR
2	F	22	TYR
1	E	292[A]	MET
2	B	22	TYR
1	E	114	ARG

Some sidechains can be flipped to improve hydrogen bonding and reduce clashes. There are no such sidechains identified.

5.3.3 RNA ⓘ

There are no RNA molecules in this entry.

5.4 Non-standard residues in protein, DNA, RNA chains ⓘ

There are no non-standard protein/DNA/RNA residues in this entry.

5.5 Carbohydrates ⓘ

There are no carbohydrates in this entry.

5.6 Ligand geometry ⓘ

25 ligands are modelled in this entry.

In the following table, the Counts columns list the number of bonds (or angles) for which Mogul statistics could be retrieved, the number of bonds (or angles) that are observed in the model and the number of bonds (or angles) that are defined in the Chemical Component Dictionary. The Link column lists molecule types, if any, to which the group is linked. The Z score for a bond length (or angle) is the number of standard deviations the observed value is removed from the expected value. A bond length (or angle) with $|Z| > 2$ is considered an outlier worth inspection. RMSZ is the root-mean-square of all Z scores of the bond lengths (or angles).

Mol	Type	Chain	Res	Link	Bond lengths			Bond angles		
					Counts	RMSZ	$\# Z > 2$	Counts	RMSZ	$\# Z > 2$
3	NHE	A	401	-	13,13,13	1.72	3 (23%)	16,17,17	1.21	1 (6%)
4	NAG	A	402	1,4	14,14,15	0.36	0	17,19,21	0.72	0
4	NAG	A	403	4	14,14,15	0.20	0	17,19,21	0.44	0
4	NAG	A	404	1	14,14,15	0.20	0	17,19,21	0.50	0
5	PEG	A	405	-	6,6,6	0.34	0	5,5,5	0.47	0
5	PEG	A	406	-	6,6,6	0.53	0	5,5,5	0.44	0

Mol	Type	Chain	Res	Link	Bond lengths			Bond angles		
					Counts	RMSZ	# Z > 2	Counts	RMSZ	# Z > 2
5	PEG	A	407	-	6,6,6	0.53	0	5,5,5	0.38	0
6	GOL	A	408	-	5,5,5	0.93	0	5,5,5	0.96	0
5	PEG	B	201	-	6,6,6	0.53	0	5,5,5	0.64	0
5	PEG	B	202	-	6,6,6	0.30	0	5,5,5	1.14	0
3	NHE	C	401	-	13,13,13	1.70	3 (23%)	16,17,17	1.25	2 (12%)
4	NAG	C	402	1	14,14,15	0.18	0	17,19,21	0.39	0
4	NAG	C	403	1,4	14,14,15	0.36	0	17,19,21	0.61	0
4	NAG	C	404	4	14,14,15	0.16	0	17,19,21	0.60	0
4	NAG	C	405	1	14,14,15	0.30	0	17,19,21	0.53	0
5	PEG	C	406	-	6,6,6	0.52	0	5,5,5	0.39	0
6	GOL	C	407	-	5,5,5	0.71	0	5,5,5	0.75	0
5	PEG	D	201	-	6,6,6	0.50	0	5,5,5	0.47	0
5	PEG	D	202	-	6,6,6	0.57	0	5,5,5	0.22	0
3	NHE	E	401	-	13,13,13	1.74	3 (23%)	16,17,17	1.25	2 (12%)
4	NAG	E	402	1,4	14,14,15	0.29	0	17,19,21	0.57	0
4	NAG	E	403	4	14,14,15	0.25	0	17,19,21	0.56	0
5	PEG	E	404	-	6,6,6	0.55	0	5,5,5	0.35	0
6	GOL	E	405	-	5,5,5	0.88	0	5,5,5	0.99	0
6	GOL	E	406	-	5,5,5	0.80	0	5,5,5	1.17	1 (20%)

In the following table, the Chirals column lists the number of chiral outliers, the number of chiral centers analysed, the number of these observed in the model and the number defined in the Chemical Component Dictionary. Similar counts are reported in the Torsion and Rings columns. '-' means no outliers of that kind were identified.

Mol	Type	Chain	Res	Link	Chirals	Torsions	Rings
3	NHE	A	401	-	-	0/7/15/15	0/1/1/1
4	NAG	A	402	1,4	-	0/6/23/26	0/1/1/1
4	NAG	A	403	4	-	0/6/23/26	0/1/1/1
4	NAG	A	404	1	-	0/6/23/26	0/1/1/1
5	PEG	A	405	-	-	0/4/4/4	0/0/0/0
5	PEG	A	406	-	-	0/4/4/4	0/0/0/0
5	PEG	A	407	-	-	0/4/4/4	0/0/0/0
6	GOL	A	408	-	-	0/4/4/4	0/0/0/0
5	PEG	B	201	-	-	0/4/4/4	0/0/0/0
5	PEG	B	202	-	-	0/4/4/4	0/0/0/0
3	NHE	C	401	-	-	0/7/15/15	0/1/1/1
4	NAG	C	402	1	-	0/6/23/26	0/1/1/1
4	NAG	C	403	1,4	-	0/6/23/26	0/1/1/1
4	NAG	C	404	4	-	0/6/23/26	0/1/1/1
4	NAG	C	405	1	-	0/6/23/26	0/1/1/1
5	PEG	C	406	-	-	0/4/4/4	0/0/0/0

Continued on next page...

Continued from previous page...

Mol	Type	Chain	Res	Link	Chirals	Torsions	Rings
6	GOL	C	407	-	-	0/4/4/4	0/0/0/0
5	PEG	D	201	-	-	0/4/4/4	0/0/0/0
5	PEG	D	202	-	-	0/4/4/4	0/0/0/0
3	NHE	E	401	-	-	0/7/15/15	0/1/1/1
4	NAG	E	402	1,4	-	0/6/23/26	0/1/1/1
4	NAG	E	403	4	-	0/6/23/26	0/1/1/1
5	PEG	E	404	-	-	0/4/4/4	0/0/0/0
6	GOL	E	405	-	-	0/4/4/4	0/0/0/0
6	GOL	E	406	-	-	0/4/4/4	0/0/0/0

The worst 5 of 9 bond length outliers are listed below:

Mol	Chain	Res	Type	Atoms	Z	Observed(Å)	Ideal(Å)
3	C	401	NHE	O2-S	2.81	1.53	1.45
3	A	401	NHE	O1-S	2.82	1.53	1.45
3	E	401	NHE	O2-S	2.92	1.53	1.45
3	C	401	NHE	O1-S	2.97	1.53	1.45
3	E	401	NHE	O1-S	2.98	1.53	1.45

The worst 5 of 6 bond angle outliers are listed below:

Mol	Chain	Res	Type	Atoms	Z	Observed(°)	Ideal(°)
6	E	406	GOL	C3-C2-C1	-2.12	103.45	111.63
3	C	401	NHE	O3-S-C2	2.09	109.14	105.77
3	E	401	NHE	O3-S-C2	2.30	109.48	105.77
3	E	401	NHE	O1-S-C2	2.48	109.90	106.92
3	A	401	NHE	O2-S-C2	2.96	110.48	106.92

There are no chirality outliers.

There are no torsion outliers.

There are no ring outliers.

5 monomers are involved in 6 short contacts:

Mol	Chain	Res	Type	Clashes	Symm-Clashes
3	A	401	NHE	1	0
6	A	408	GOL	1	0
6	C	407	GOL	1	0
3	E	401	NHE	1	0
6	E	406	GOL	2	0

5.7 Other polymers [i](#)

There are no such residues in this entry.

5.8 Polymer linkage issues [i](#)

There are no chain breaks in this entry.

6 Fit of model and data [i](#)

6.1 Protein, DNA and RNA chains [i](#)

In the following table, the column labelled ‘#RSRZ > 2’ contains the number (and percentage) of RSRZ outliers, followed by percent RSRZ outliers for the chain as percentile scores relative to all X-ray entries and entries of similar resolution. The OWAB column contains the minimum, median, 95th percentile and maximum values of the occupancy-weighted average B-factor per residue. The column labelled ‘Q < 0.9’ lists the number of (and percentage) of residues with an average occupancy less than 0.9.

Mol	Chain	Analysed	<RSRZ>	#RSRZ>2	OWAB(Å ²)	Q<0.9
1	A	324/334 (97%)	-0.25	5 (1%) 73 77	12, 25, 40, 70	0
1	C	323/334 (96%)	-0.20	3 (0%) 84 86	12, 28, 44, 70	0
1	E	323/334 (96%)	-0.13	4 (1%) 79 82	12, 27, 45, 77	0
2	B	176/177 (99%)	0.05	1 (0%) 89 91	11, 32, 49, 65	0
2	D	176/177 (99%)	0.01	5 (2%) 53 59	11, 30, 49, 62	0
2	F	175/177 (98%)	0.57	18 (10%) 6 7	11, 38, 59, 73	0
All	All	1497/1533 (97%)	-0.05	36 (2%) 59 64	11, 29, 50, 77	0

The worst 5 of 36 RSRZ outliers are listed below:

Mol	Chain	Res	Type	RSRZ
1	C	324	PRO	5.3
1	A	324	PRO	4.5
1	E	324	PRO	4.4
2	F	26	HIS	4.2
1	E	323	SER	4.1

6.2 Non-standard residues in protein, DNA, RNA chains [i](#)

There are no non-standard protein/DNA/RNA residues in this entry.

6.3 Carbohydrates [i](#)

There are no carbohydrates in this entry.

6.4 Ligands

In the following table, the Atoms column lists the number of modelled atoms in the group and the number defined in the chemical component dictionary. The B-factors column lists the minimum, median, 95th percentile and maximum values of B factors of atoms in the group. The column labelled 'Q< 0.9' lists the number of atoms with occupancy less than 0.9.

Mol	Type	Chain	Res	Atoms	RSCC	RSR	B-factors(Å ²)	Q<0.9
4	NAG	C	405	14/15	0.64	0.38	59,86,91,93	0
4	NAG	C	402	14/15	0.66	0.50	102,107,108,108	0
4	NAG	A	403	14/15	0.68	0.45	82,90,101,104	0
3	NHE	C	401	13/13	0.69	0.28	34,47,73,87	0
5	PEG	B	202	7/7	0.69	0.20	30,36,41,42	0
5	PEG	A	405	7/7	0.74	0.29	30,36,41,42	0
4	NAG	A	404	14/15	0.76	0.23	66,71,74,75	0
5	PEG	A	406	7/7	0.77	0.15	38,47,50,54	0
4	NAG	C	404	14/15	0.77	0.37	63,76,86,87	0
5	PEG	E	404	7/7	0.80	0.17	46,48,53,58	0
5	PEG	D	202	7/7	0.80	0.31	31,43,54,55	0
6	GOL	C	407	6/6	0.81	0.25	30,31,43,43	0
5	PEG	C	406	7/7	0.83	0.22	36,38,44,53	0
5	PEG	A	407	7/7	0.83	0.17	40,44,50,51	0
4	NAG	E	403	14/15	0.83	0.30	58,71,79,80	0
6	GOL	E	406	6/6	0.87	0.14	30,31,43,43	0
3	NHE	E	401	13/13	0.88	0.21	33,44,62,84	0
5	PEG	D	201	7/7	0.89	0.11	42,44,48,53	0
6	GOL	E	405	6/6	0.90	0.13	33,39,41,44	0
4	NAG	A	402	14/15	0.92	0.15	37,48,61,70	0
4	NAG	E	402	14/15	0.92	0.09	34,41,49,57	0
4	NAG	C	403	14/15	0.92	0.12	26,34,48,55	0
6	GOL	A	408	6/6	0.92	0.15	25,36,43,44	0
5	PEG	B	201	7/7	0.93	0.09	30,36,41,42	0
3	NHE	A	401	13/13	0.97	0.09	20,29,37,42	0

6.5 Other polymers

There are no such residues in this entry.