



wwPDB X-ray Structure Validation Summary Report ⓘ

Mar 9, 2018 – 07:01 pm GMT

PDB ID : 3CSL
Title : Structure of the *Serratia marcescens* hemophore receptor HasR in complex with its hemophore HasA and heme
Authors : Krieg, S.; Diederichs, K.
Deposited on : 2008-04-10
Resolution : 2.70 Å(reported)

This is a wwPDB X-ray Structure Validation Summary Report for a publicly released PDB entry.

We welcome your comments at validation@mail.wwpdb.org

A user guide is available at

<https://www.wwpdb.org/validation/2017/XrayValidationReportHelp>

with specific help available everywhere you see the ⓘ symbol.

The following versions of software and data (see [references ⓘ](#)) were used in the production of this report:

MolProbity : 4.02b-467
Mogul : 1.7.3 (157068), CSD as539be (2018)
Xtriage (Phenix) : 1.13
EDS : trunk30967
Percentile statistics : 20171227.v01 (using entries in the PDB archive December 27th 2017)
Refmac : 5.8.0158
CCP4 : 7.0 (Gargrove)
Ideal geometry (proteins) : Engh & Huber (2001)
Ideal geometry (DNA, RNA) : Parkinson et al. (1996)
Validation Pipeline (wwPDB-VP) : trunk30967

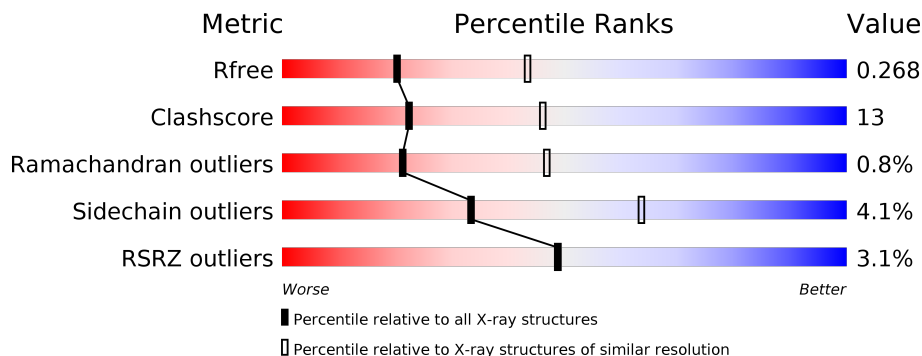
1 Overall quality at a glance

The following experimental techniques were used to determine the structure:

X-RAY DIFFRACTION

The reported resolution of this entry is 2.70 Å.

Percentile scores (ranging between 0-100) for global validation metrics of the entry are shown in the following graphic. The table shows the number of entries on which the scores are based.



Metric	Whole archive (#Entries)	Similar resolution (#Entries, resolution range(Å))
R_{free}	111664	2449 (2.70-2.70)
Clashscore	122126	2756 (2.70-2.70)
Ramachandran outliers	120053	2716 (2.70-2.70)
Sidechain outliers	120020	2716 (2.70-2.70)
RSRZ outliers	108989	2376 (2.70-2.70)

The table below summarises the geometric issues observed across the polymeric chains and their fit to the electron density. The red, orange, yellow and green segments on the lower bar indicate the fraction of residues that contain outliers for ≥ 3 , 2, 1 and 0 types of geometric quality criteria. A grey segment represents the fraction of residues that are not modelled. The numeric value for each fraction is indicated below the corresponding segment, with a dot representing fractions $\leq 5\%$. The upper red bar (where present) indicates the fraction of residues that have poor fit to the electron density. The numeric value is given above the bar.

Mol	Chain	Length	Quality of chain
1	A	865	<div> <div>2%</div> <div> <div></div> <div>62%</div> <div>23%</div> <div>•</div> <div>13%</div> </div> </div>
1	B	865	<div> <div>2%</div> <div> <div></div> <div>62%</div> <div>23%</div> <div>•</div> <div>13%</div> </div> </div>
2	C	206	<div> <div>6%</div> <div> <div></div> <div>66%</div> <div>13%</div> <div>21%</div> </div> </div>
2	D	206	<div> <div>6%</div> <div> <div></div> <div>67%</div> <div>11%</div> <div>21%</div> </div> </div>

The following table lists non-polymeric compounds, carbohydrate monomers and non-standard residues in protein, DNA, RNA chains that are outliers for geometric or electron-density-fit crite-

ria:

Mol	Type	Chain	Res	Chirality	Geometry	Clashes	Electron density
4	GOL	A	871	-	-	-	X

2 Entry composition

There are 5 unique types of molecules in this entry. The entry contains 14317 atoms, of which 0 are hydrogens and 0 are deuteriums.

In the tables below, the ZeroOcc column contains the number of atoms modelled with zero occupancy, the AltConf column contains the number of residues with at least one atom in alternate conformation and the Trace column contains the number of residues modelled with at most 2 atoms.

- Molecule 1 is a protein called HasR protein.

Mol	Chain	Residues	Atoms					ZeroOcc	AltConf	Trace
1	A	753	Total	C	N	O	S	0	0	0
			5889	3674	1043	1159	13			
1	B	753	Total	C	N	O	S	0	0	0
			5889	3674	1043	1159	13			

There are 2 discrepancies between the modelled and reference sequences:

Chain	Residue	Modelled	Actual	Comment	Reference
A	645	ALA	GLY	SEE REMARK 999	UNP Q79AD2
B	645	ALA	GLY	SEE REMARK 999	UNP Q79AD2

- Molecule 2 is a protein called Hemophore HasA.

Mol	Chain	Residues	Atoms					ZeroOcc	AltConf	Trace
2	C	163	Total	C	N	O	S	0	0	0
			1184	743	189	251	1			
2	D	163	Total	C	N	O	S	0	0	0
			1184	743	189	251	1			

There are 38 discrepancies between the modelled and reference sequences:

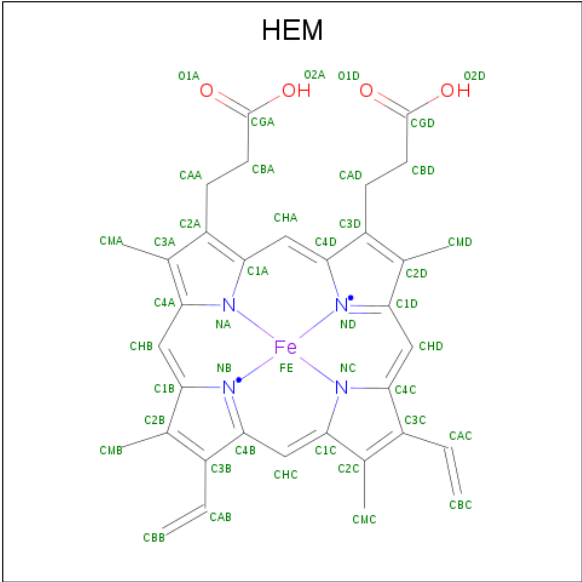
Chain	Residue	Modelled	Actual	Comment	Reference
C	-17	MET	-	EXPRESSION TAG	UNP Q54450
C	-16	ARG	-	EXPRESSION TAG	UNP Q54450
C	-15	GLY	-	EXPRESSION TAG	UNP Q54450
C	-14	SER	-	EXPRESSION TAG	UNP Q54450
C	-13	HIS	-	EXPRESSION TAG	UNP Q54450
C	-12	HIS	-	EXPRESSION TAG	UNP Q54450
C	-11	HIS	-	EXPRESSION TAG	UNP Q54450
C	-10	HIS	-	EXPRESSION TAG	UNP Q54450
C	-9	HIS	-	EXPRESSION TAG	UNP Q54450
C	-8	HIS	-	EXPRESSION TAG	UNP Q54450

Continued on next page...

Continued from previous page...

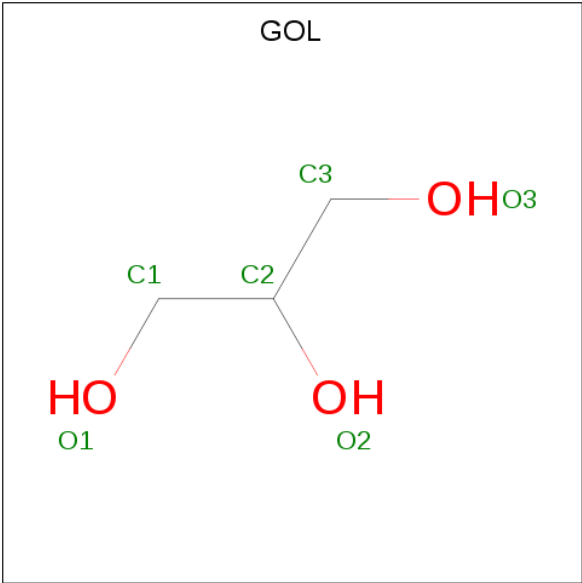
Chain	Residue	Modelled	Actual	Comment	Reference
C	-7	GLY	-	EXPRESSION TAG	UNP Q54450
C	-6	ILE	-	EXPRESSION TAG	UNP Q54450
C	-5	ARG	-	EXPRESSION TAG	UNP Q54450
C	-4	MET	-	EXPRESSION TAG	UNP Q54450
C	-3	ARG	-	EXPRESSION TAG	UNP Q54450
C	-2	ALA	-	EXPRESSION TAG	UNP Q54450
C	-1	ARG	-	EXPRESSION TAG	UNP Q54450
C	0	TYR	-	EXPRESSION TAG	UNP Q54450
C	1	PRO	-	EXPRESSION TAG	UNP Q54450
D	-17	MET	-	EXPRESSION TAG	UNP Q54450
D	-16	ARG	-	EXPRESSION TAG	UNP Q54450
D	-15	GLY	-	EXPRESSION TAG	UNP Q54450
D	-14	SER	-	EXPRESSION TAG	UNP Q54450
D	-13	HIS	-	EXPRESSION TAG	UNP Q54450
D	-12	HIS	-	EXPRESSION TAG	UNP Q54450
D	-11	HIS	-	EXPRESSION TAG	UNP Q54450
D	-10	HIS	-	EXPRESSION TAG	UNP Q54450
D	-9	HIS	-	EXPRESSION TAG	UNP Q54450
D	-8	HIS	-	EXPRESSION TAG	UNP Q54450
D	-7	GLY	-	EXPRESSION TAG	UNP Q54450
D	-6	ILE	-	EXPRESSION TAG	UNP Q54450
D	-5	ARG	-	EXPRESSION TAG	UNP Q54450
D	-4	MET	-	EXPRESSION TAG	UNP Q54450
D	-3	ARG	-	EXPRESSION TAG	UNP Q54450
D	-2	ALA	-	EXPRESSION TAG	UNP Q54450
D	-1	ARG	-	EXPRESSION TAG	UNP Q54450
D	0	TYR	-	EXPRESSION TAG	UNP Q54450
D	1	PRO	-	EXPRESSION TAG	UNP Q54450

- Molecule 3 is PROTOPORPHYRIN IX CONTAINING FE (three-letter code: HEM) (formula: $C_{34}H_{32}FeN_4O_4$).



Mol	Chain	Residues	Atoms					ZeroOcc	AltConf
3	A	1	Total 43	C 34	Fe 1	N 4	O 4	0	0
3	B	1	Total 43	C 34	Fe 1	N 4	O 4	0	0

- Molecule 4 is GLYCEROL (three-letter code: GOL) (formula: C₃H₈O₃).



Mol	Chain	Residues	Atoms			ZeroOcc	AltConf
4	A	1	Total	C	O	0	0
			6	3	3		
4	A	1	Total	C	O	0	0
			6	3	3		

Continued on next page...

Continued from previous page...

Mol	Chain	Residues	Atoms			ZeroOcc	AltConf
4	A	1	Total	C	O	0	0
			6	3	3		
4	A	1	Total	C	O	0	0
			6	3	3		
4	A	1	Total	C	O	0	0
			6	3	3		
4	B	1	Total	C	O	0	0
			6	3	3		
4	B	1	Total	C	O	0	0
			6	3	3		

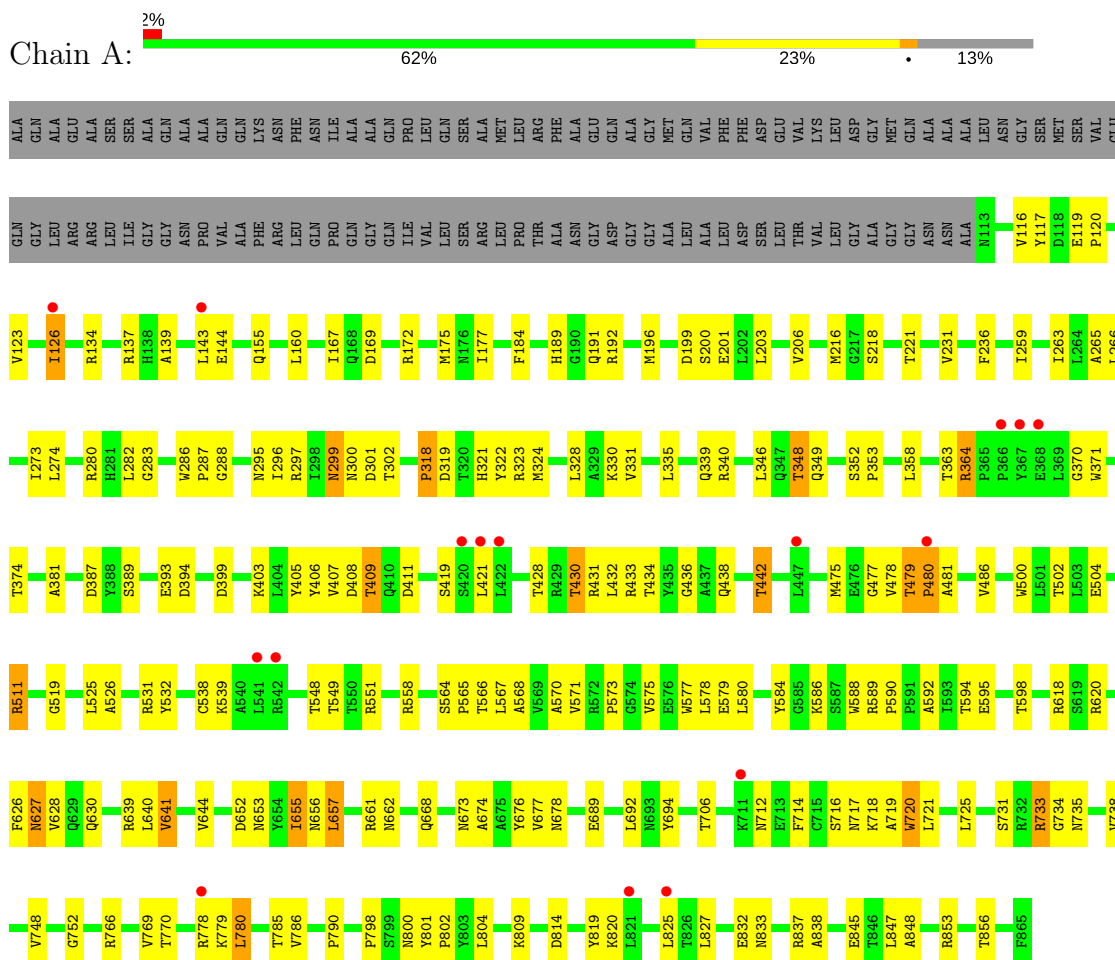
- Molecule 5 is water.

Mol	Chain	Residues	Atoms		ZeroOcc	AltConf
5	A	26	Total	O	0	0
			26	26		
5	B	16	Total	O	0	0
			16	16		
5	D	1	Total	O	0	0
			1	1		

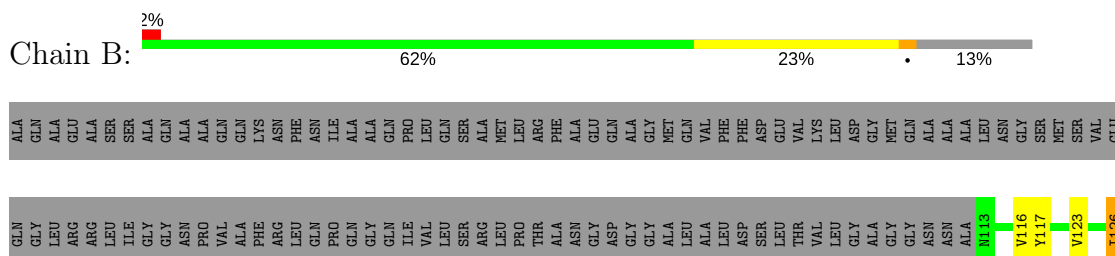
3 Residue-property plots [i](#)

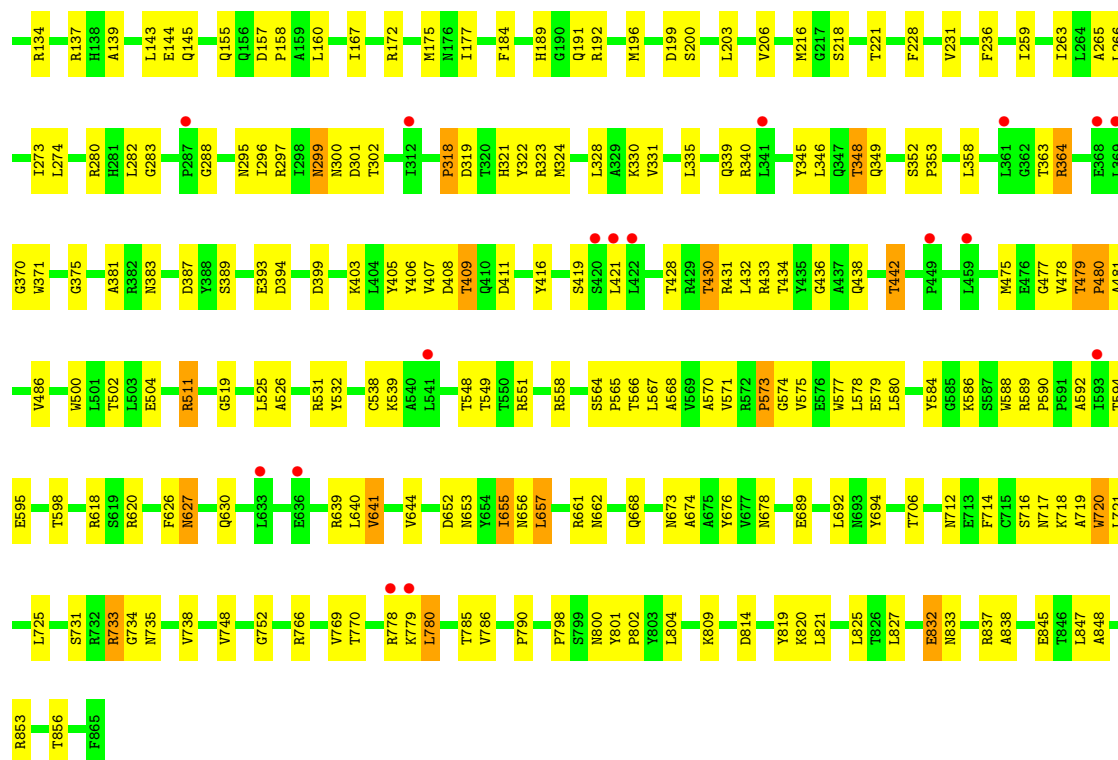
These plots are drawn for all protein, RNA and DNA chains in the entry. The first graphic for a chain summarises the proportions of the various outlier classes displayed in the second graphic. The second graphic shows the sequence view annotated by issues in geometry and electron density. Residues are color-coded according to the number of geometric quality criteria for which they contain at least one outlier: green = 0, yellow = 1, orange = 2 and red = 3 or more. A red dot above a residue indicates a poor fit to the electron density ($RSRZ > 2$). Stretches of 2 or more consecutive residues without any outlier are shown as a green connector. Residues present in the sample, but not in the model, are shown in grey.

• Molecule 1: HasR protein

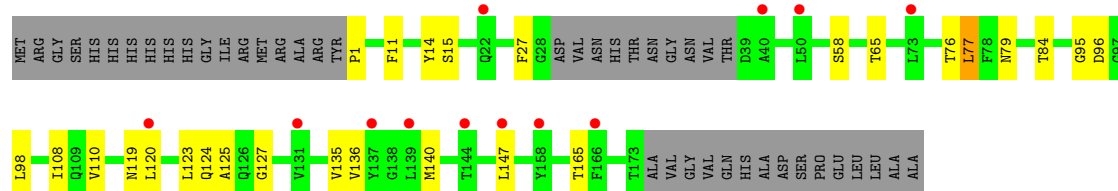


• Molecule 1: HasR protein

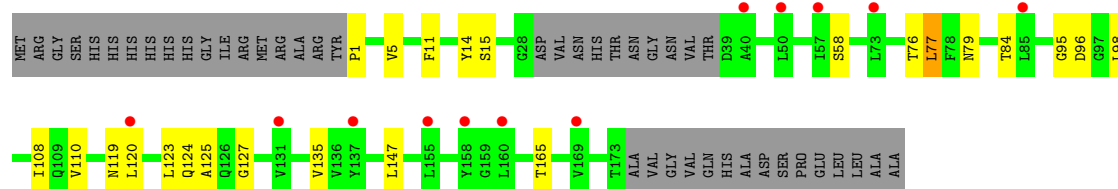




• Molecule 2: Hemophore HasA



• Molecule 2: Hemophore HasA



4 Data and refinement statistics

Property	Value	Source
Space group	F 2 2 2	Depositor
Cell constants a, b, c, α , β , γ	157.02Å 163.40Å 595.53Å 90.00° 90.00° 90.00°	Depositor
Resolution (Å)	49.17 – 2.70 49.17 – 2.70	Depositor EDS
% Data completeness (in resolution range)	95.0 (49.17-2.70) 95.0 (49.17-2.70)	Depositor EDS
R_{merge}	0.16	Depositor
R_{sym}	(Not available)	Depositor
$\langle I/\sigma(I) \rangle$ ¹	1.51 (at 2.69Å)	Xtriage
Refinement program	PHENIX (phenix.refine)	Depositor
R, R_{free}	0.239 , 0.274 0.233 , 0.268	Depositor DCC
R_{free} test set	4959 reflections (4.99%)	wwPDB-VP
Wilson B-factor (Å ²)	54.8	Xtriage
Anisotropy	0.153	Xtriage
Bulk solvent k_{sol} (e/Å ³), B_{sol} (Å ²)	0.32 , 57.8	EDS
L-test for twinning ²	$\langle L \rangle = 0.42$, $\langle L^2 \rangle = 0.25$	Xtriage
Estimated twinning fraction	0.074 for -k,-h,-l	Xtriage
F_o, F_c correlation	0.93	EDS
Total number of atoms	14317	wwPDB-VP
Average B, all atoms (Å ²)	98.0	wwPDB-VP

Xtriage's analysis on translational NCS is as follows: *The largest off-origin peak in the Patterson function is 2.78% of the height of the origin peak. No significant pseudotranslation is detected.*

¹Intensities estimated from amplitudes.

²Theoretical values of $\langle |L| \rangle$, $\langle L^2 \rangle$ for acentric reflections are 0.5, 0.333 respectively for untwinned datasets, and 0.375, 0.2 for perfectly twinned datasets.

5 Model quality [i](#)

5.1 Standard geometry [i](#)

Bond lengths and bond angles in the following residue types are not validated in this section: GOL, HEM

The Z score for a bond length (or angle) is the number of standard deviations the observed value is removed from the expected value. A bond length (or angle) with $|Z| > 5$ is considered an outlier worth inspection. RMSZ is the root-mean-square of all Z scores of the bond lengths (or angles).

Mol	Chain	Bond lengths		Bond angles	
		RMSZ	$\# Z > 5$	RMSZ	$\# Z > 5$
1	A	0.21	0/6027	0.38	0/8188
1	B	0.21	0/6027	0.38	0/8188
2	C	0.21	0/1211	0.33	0/1649
2	D	0.21	0/1211	0.33	0/1649
All	All	0.21	0/14476	0.37	0/19674

There are no bond length outliers.

There are no bond angle outliers.

There are no chirality outliers.

There are no planarity outliers.

5.2 Too-close contacts [i](#)

In the following table, the Non-H and H(model) columns list the number of non-hydrogen atoms and hydrogen atoms in the chain respectively. The H(added) column lists the number of hydrogen atoms added and optimized by MolProbity. The Clashes column lists the number of clashes within the asymmetric unit, whereas Symm-Clashes lists symmetry related clashes.

Mol	Chain	Non-H	H(model)	H(added)	Clashes	Symm-Clashes
1	A	5889	0	5597	152	0
1	B	5889	0	5597	150	0
2	C	1184	0	1078	18	0
2	D	1184	0	1078	17	0
3	A	43	0	30	9	0
3	B	43	0	30	8	0
4	A	30	0	40	0	0
4	B	12	0	16	0	0
5	A	26	0	0	0	0

Continued on next page...

Continued from previous page...

Mol	Chain	Non-H	H(model)	H(added)	Clashes	Symm-Clashes
5	B	16	0	0	0	0
5	D	1	0	0	0	0
All	All	14317	0	13466	347	0

The all-atom clashscore is defined as the number of clashes found per 1000 atoms (including hydrogen atoms). The all-atom clashscore for this structure is 13.

The worst 5 of 347 close contacts within the same asymmetric unit are listed below, sorted by their clash magnitude.

Atom-1	Atom-2	Interatomic distance (Å)	Clash overlap (Å)
1:A:137:ARG:HD3	1:A:853:ARG:HD2	1.40	1.03
1:B:137:ARG:HD3	1:B:853:ARG:HD2	1.41	1.01
1:A:779:LYS:HZ3	1:A:820:LYS:HG3	1.30	0.96
1:A:318:PRO:HG2	1:A:371:TRP:HB2	1.48	0.95
3:B:866:HEM:HHC	3:B:866:HEM:HBB2	1.48	0.93

There are no symmetry-related clashes.

5.3 Torsion angles [i](#)

5.3.1 Protein backbone [i](#)

In the following table, the Percentiles column shows the percent Ramachandran outliers of the chain as a percentile score with respect to all X-ray entries followed by that with respect to entries of similar resolution.

The Analysed column shows the number of residues for which the backbone conformation was analysed, and the total number of residues.

Mol	Chain	Analysed	Favoured	Allowed	Outliers	Percentiles	
1	A	751/865 (87%)	678 (90%)	67 (9%)	6 (1%)	21	47
1	B	751/865 (87%)	679 (90%)	66 (9%)	6 (1%)	21	47
2	C	159/206 (77%)	150 (94%)	8 (5%)	1 (1%)	27	54
2	D	159/206 (77%)	150 (94%)	7 (4%)	2 (1%)	13	33
All	All	1820/2142 (85%)	1657 (91%)	148 (8%)	15 (1%)	21	47

5 of 15 Ramachandran outliers are listed below:

Mol	Chain	Res	Type
1	A	318	PRO
1	A	480	PRO
1	A	573	PRO
1	B	318	PRO
1	B	480	PRO

5.3.2 Protein sidechains ⓘ

In the following table, the Percentiles column shows the percent sidechain outliers of the chain as a percentile score with respect to all X-ray entries followed by that with respect to entries of similar resolution.

The Analysed column shows the number of residues for which the sidechain conformation was analysed, and the total number of residues.

Mol	Chain	Analysed	Rotameric	Outliers	Percentiles	
1	A	616/695 (89%)	587 (95%)	29 (5%)	29	58
1	B	616/695 (89%)	587 (95%)	29 (5%)	29	58
2	C	124/158 (78%)	123 (99%)	1 (1%)	83	94
2	D	124/158 (78%)	123 (99%)	1 (1%)	83	94
All	All	1480/1706 (87%)	1420 (96%)	60 (4%)	33	63

5 of 60 residues with a non-rotameric sidechain are listed below:

Mol	Chain	Res	Type
1	A	825	LEU
1	B	323	ARG
1	B	780	LEU
1	B	143	LEU
1	B	348	THR

Some sidechains can be flipped to improve hydrogen bonding and reduce clashes. 5 of 10 such sidechains are listed below:

Mol	Chain	Res	Type
1	B	608	GLN
1	B	627	ASN
2	C	126	GLN
1	B	193	ASN
2	C	119	ASN

5.3.3 RNA ⓘ

There are no RNA molecules in this entry.

5.4 Non-standard residues in protein, DNA, RNA chains ⓘ

There are no non-standard protein/DNA/RNA residues in this entry.

5.5 Carbohydrates ⓘ

There are no carbohydrates in this entry.

5.6 Ligand geometry ⓘ

9 ligands are modelled in this entry.

In the following table, the Counts columns list the number of bonds (or angles) for which Mogul statistics could be retrieved, the number of bonds (or angles) that are observed in the model and the number of bonds (or angles) that are defined in the Chemical Component Dictionary. The Link column lists molecule types, if any, to which the group is linked. The Z score for a bond length (or angle) is the number of standard deviations the observed value is removed from the expected value. A bond length (or angle) with $|Z| > 2$ is considered an outlier worth inspection. RMSZ is the root-mean-square of all Z scores of the bond lengths (or angles).

Mol	Type	Chain	Res	Link	Bond lengths			Bond angles		
					Counts	RMSZ	# $ Z > 2$	Counts	RMSZ	# $ Z > 2$
3	HEM	A	866	1	27,50,50	2.17	5 (18%)	17,82,82	1.27	0
4	GOL	A	867	-	5,5,5	0.34	0	5,5,5	0.15	0
4	GOL	A	868	-	5,5,5	0.37	0	5,5,5	0.17	0
4	GOL	A	869	-	5,5,5	0.37	0	5,5,5	0.26	0
4	GOL	A	870	-	5,5,5	0.36	0	5,5,5	0.21	0
4	GOL	A	871	-	5,5,5	0.35	0	5,5,5	0.24	0
3	HEM	B	866	1	27,50,50	2.18	5 (18%)	17,82,82	1.29	1 (5%)
4	GOL	B	867	-	5,5,5	0.37	0	5,5,5	0.27	0
4	GOL	B	868	-	5,5,5	0.36	0	5,5,5	0.23	0

In the following table, the Chirals column lists the number of chiral outliers, the number of chiral centers analysed, the number of these observed in the model and the number defined in the Chemical Component Dictionary. Similar counts are reported in the Torsion and Rings columns. '-' means no outliers of that kind were identified.

Mol	Type	Chain	Res	Link	Chirals	Torsions	Rings
3	HEM	A	866	1	-	0/6/54/54	0/0/8/8

Continued on next page...

Continued from previous page...

Mol	Type	Chain	Res	Link	Chirals	Torsions	Rings
4	GOL	A	867	-	-	0/4/4/4	0/0/0/0
4	GOL	A	868	-	-	0/4/4/4	0/0/0/0
4	GOL	A	869	-	-	0/4/4/4	0/0/0/0
4	GOL	A	870	-	-	0/4/4/4	0/0/0/0
4	GOL	A	871	-	-	0/4/4/4	0/0/0/0
3	HEM	B	866	1	-	0/6/54/54	0/0/8/8
4	GOL	B	867	-	-	0/4/4/4	0/0/0/0
4	GOL	B	868	-	-	0/4/4/4	0/0/0/0

The worst 5 of 10 bond length outliers are listed below:

Mol	Chain	Res	Type	Atoms	Z	Observed(Å)	Ideal(Å)
3	B	866	HEM	C3B-C2B	-4.73	1.33	1.40
3	A	866	HEM	C3B-C2B	-4.73	1.33	1.40
3	A	866	HEM	C3C-C2C	-4.24	1.34	1.40
3	B	866	HEM	C3C-C2C	-4.23	1.34	1.40
3	B	866	HEM	C3B-CAB	3.53	1.54	1.47

All (1) bond angle outliers are listed below:

Mol	Chain	Res	Type	Atoms	Z	Observed(°)	Ideal(°)
3	B	866	HEM	C1D-C2D-C3D	-2.02	105.59	107.00

There are no chirality outliers.

There are no torsion outliers.

There are no ring outliers.

2 monomers are involved in 17 short contacts:

Mol	Chain	Res	Type	Clashes	Symm-Clashes
3	A	866	HEM	9	0
3	B	866	HEM	8	0

5.7 Other polymers [i](#)

There are no such residues in this entry.

5.8 Polymer linkage issues [i](#)

There are no chain breaks in this entry.

6 Fit of model and data [i](#)

6.1 Protein, DNA and RNA chains [i](#)

In the following table, the column labelled ‘#RSRZ > 2’ contains the number (and percentage) of RSRZ outliers, followed by percent RSRZ outliers for the chain as percentile scores relative to all X-ray entries and entries of similar resolution. The OWAB column contains the minimum, median, 95th percentile and maximum values of the occupancy-weighted average B-factor per residue. The column labelled ‘Q < 0.9’ lists the number of (and percentage) of residues with an average occupancy less than 0.9.

Mol	Chain	Analysed	<RSRZ>	#RSRZ>2	OWAB(Å ²)	Q<0.9
1	A	753/865 (87%)	0.49	16 (2%) 63 64	53, 91, 133, 199	0
1	B	753/865 (87%)	0.52	17 (2%) 60 61	61, 91, 134, 196	0
2	C	163/206 (79%)	0.57	12 (7%) 14 12	82, 109, 141, 179	0
2	D	163/206 (79%)	0.55	12 (7%) 14 12	82, 109, 141, 179	0
All	All	1832/2142 (85%)	0.51	57 (3%) 49 49	53, 94, 138, 199	0

The worst 5 of 57 RSRZ outliers are listed below:

Mol	Chain	Res	Type	RSRZ
1	A	422	LEU	7.9
1	B	422	LEU	5.4
1	B	421	LEU	5.1
1	A	447	LEU	4.8
1	A	541	LEU	4.6

6.2 Non-standard residues in protein, DNA, RNA chains [i](#)

There are no non-standard protein/DNA/RNA residues in this entry.

6.3 Carbohydrates [i](#)

There are no carbohydrates in this entry.

6.4 Ligands [i](#)

In the following table, the Atoms column lists the number of modelled atoms in the group and the number defined in the chemical component dictionary. The B-factors column lists the minimum, median, 95th percentile and maximum values of B factors of atoms in the group. The column labelled ‘Q < 0.9’ lists the number of atoms with occupancy less than 0.9.

Mol	Type	Chain	Res	Atoms	RSCC	RSR	B-factors(\AA^2)	Q<0.9
4	GOL	A	871	6/6	0.72	0.42	60,120,142,145	0
4	GOL	A	867	6/6	0.83	0.21	68,74,118,119	0
4	GOL	A	870	6/6	0.83	0.18	101,122,137,144	0
4	GOL	B	867	6/6	0.86	0.20	65,89,122,123	0
4	GOL	A	868	6/6	0.89	0.27	49,82,113,137	0
4	GOL	A	869	6/6	0.89	0.20	105,119,128,128	0
4	GOL	B	868	6/6	0.90	0.14	73,109,123,124	0
3	HEM	B	866	43/43	0.98	0.35	38,80,148,169	0
3	HEM	A	866	43/43	0.99	0.29	42,79,148,171	0

6.5 Other polymers [i](#)

There are no such residues in this entry.