



wwPDB X-ray Structure Validation Summary Report ⓘ

Jul 4, 2018 – 02:05 PM EDT

PDB ID : 5CSE
Title : Streptavidin-S112Y-K121E Complexed with Palladium-Containing Biotin
Ligand
Authors : Finke, A.D.; Vera, L.; Marsh, M.; Chatterjee, A.; Ward, T.R.
Deposited on : 2015-07-23
Resolution : 1.79 Å(reported)

This is a wwPDB X-ray Structure Validation Summary Report for a publicly released PDB entry.

We welcome your comments at validation@mail.wwpdb.org

A user guide is available at

<https://www.wwpdb.org/validation/2017/XrayValidationReportHelp>

with specific help available everywhere you see the ⓘ symbol.

The following versions of software and data (see [references ⓘ](#)) were used in the production of this report:

MolProbity : 4.02b-467
Mogul : 1.7.3 (157068), CSD as539be (2018)
Xtriage (Phenix) : 1.13
EDS : rb-20031172
Percentile statistics : 20171227.v01 (using entries in the PDB archive December 27th 2017)
Refmac : 5.8.0158
CCP4 : 7.0 (Gargrove)
Ideal geometry (proteins) : Engh & Huber (2001)
Ideal geometry (DNA, RNA) : Parkinson et al. (1996)
Validation Pipeline (wwPDB-VP) : rb-20031172

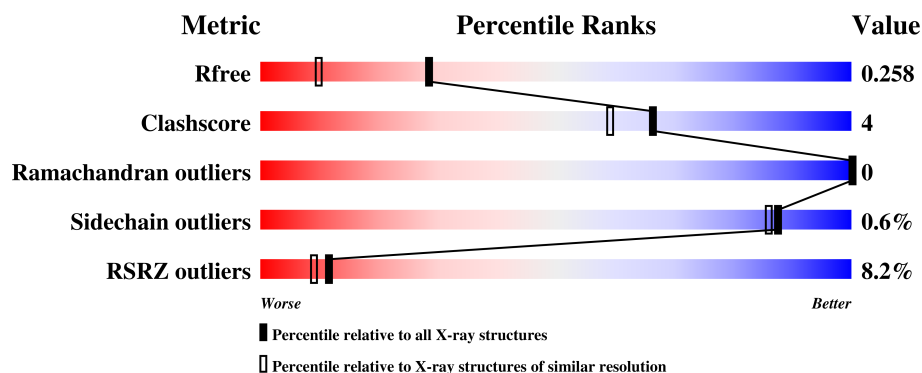
1 Overall quality at a glance

The following experimental techniques were used to determine the structure:

X-RAY DIFFRACTION

The reported resolution of this entry is 1.79 Å.

Percentile scores (ranging between 0-100) for global validation metrics of the entry are shown in the following graphic. The table shows the number of entries on which the scores are based.



Metric	Whole archive (#Entries)	Similar resolution (#Entries, resolution range(Å))
R_{free}	111664	5253 (1.80-1.80)
Clashscore	122126	6077 (1.80-1.80)
Ramachandran outliers	120053	6011 (1.80-1.80)
Sidechain outliers	120020	6010 (1.80-1.80)
RSRZ outliers	108989	5157 (1.80-1.80)

The table below summarises the geometric issues observed across the polymeric chains and their fit to the electron density. The red, orange, yellow and green segments on the lower bar indicate the fraction of residues that contain outliers for ≥ 3 , 2, 1 and 0 types of geometric quality criteria. A grey segment represents the fraction of residues that are not modelled. The numeric value for each fraction is indicated below the corresponding segment, with a dot representing fractions $\leq 5\%$. The upper red bar (where present) indicates the fraction of residues that have poor fit to the electron density. The numeric value is given above the bar.

Mol	Chain	Length	Quality of chain
1	A	159	<div> <div>7%</div> <div>70%</div> <div>6%</div> <div>24%</div> </div>
1	B	159	<div> <div>6%</div> <div>73%</div> <div>.</div> <div>23%</div> </div>

2 Entry composition

There are 4 unique types of molecules in this entry. The entry contains 1973 atoms, of which 0 are hydrogens and 0 are deuteriums.

In the tables below, the ZeroOcc column contains the number of atoms modelled with zero occupancy, the AltConf column contains the number of residues with at least one atom in alternate conformation and the Trace column contains the number of residues modelled with at most 2 atoms.

- Molecule 1 is a protein called Streptavidin.

Mol	Chain	Residues	Atoms				ZeroOcc	AltConf	Trace
1	A	121	Total	C	N	O	0	4	0
			929	582	157	190			
1	B	122	Total	C	N	O	0	3	0
			934	582	162	190			

There are 80 discrepancies between the modelled and reference sequences:

Chain	Residue	Modelled	Actual	Comment	Reference
A	1	MET	-	initiating methionine	UNP P22629
A	2	ALA	-	expression tag	UNP P22629
A	3	SER	-	expression tag	UNP P22629
A	4	MET	-	expression tag	UNP P22629
A	5	THR	-	expression tag	UNP P22629
A	6	GLY	-	expression tag	UNP P22629
A	7	GLY	-	expression tag	UNP P22629
A	8	GLN	-	expression tag	UNP P22629
A	9	GLN	-	expression tag	UNP P22629
A	10	MET	-	expression tag	UNP P22629
A	11	GLY	-	expression tag	UNP P22629
A	12	ARG	-	expression tag	UNP P22629
A	13	ASP	-	expression tag	UNP P22629
A	112	TYR	SER	engineered mutation	UNP P22629
A	121	GLU	LYS	engineered mutation	UNP P22629
A	135	PRO	-	expression tag	UNP P22629
A	136	SER	-	expression tag	UNP P22629
A	137	ALA	-	expression tag	UNP P22629
A	138	ALA	-	expression tag	UNP P22629
A	139	SER	-	expression tag	UNP P22629
A	140	ILE	-	expression tag	UNP P22629
A	141	ASP	-	expression tag	UNP P22629
A	142	ALA	-	expression tag	UNP P22629
A	143	ALA	-	expression tag	UNP P22629
A	144	LYS	-	expression tag	UNP P22629

Continued on next page...

Continued from previous page...

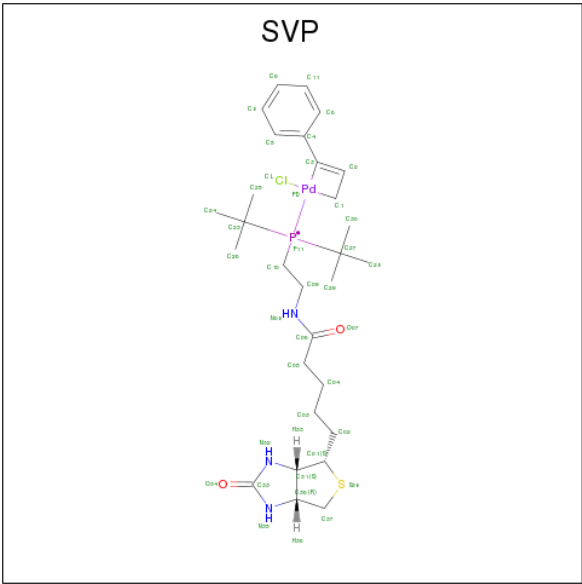
Chain	Residue	Modelled	Actual	Comment	Reference
A	145	LYS	-	expression tag	UNP P22629
A	146	ALA	-	expression tag	UNP P22629
A	147	GLY	-	expression tag	UNP P22629
A	148	VAL	-	expression tag	UNP P22629
A	149	ASN	-	expression tag	UNP P22629
A	150	ASN	-	expression tag	UNP P22629
A	151	GLY	-	expression tag	UNP P22629
A	152	ASN	-	expression tag	UNP P22629
A	153	PRO	-	expression tag	UNP P22629
A	154	LEU	-	expression tag	UNP P22629
A	155	ASP	-	expression tag	UNP P22629
A	156	ALA	-	expression tag	UNP P22629
A	157	VAL	-	expression tag	UNP P22629
A	158	GLN	-	expression tag	UNP P22629
A	159	GLN	-	expression tag	UNP P22629
B	1	MET	-	initiating methionine	UNP P22629
B	2	ALA	-	expression tag	UNP P22629
B	3	SER	-	expression tag	UNP P22629
B	4	MET	-	expression tag	UNP P22629
B	5	THR	-	expression tag	UNP P22629
B	6	GLY	-	expression tag	UNP P22629
B	7	GLY	-	expression tag	UNP P22629
B	8	GLN	-	expression tag	UNP P22629
B	9	GLN	-	expression tag	UNP P22629
B	10	MET	-	expression tag	UNP P22629
B	11	GLY	-	expression tag	UNP P22629
B	12	ARG	-	expression tag	UNP P22629
B	13	ASP	-	expression tag	UNP P22629
B	112	TYR	SER	engineered mutation	UNP P22629
B	121	GLU	LYS	engineered mutation	UNP P22629
B	135	PRO	-	expression tag	UNP P22629
B	136	SER	-	expression tag	UNP P22629
B	137	ALA	-	expression tag	UNP P22629
B	138	ALA	-	expression tag	UNP P22629
B	139	SER	-	expression tag	UNP P22629
B	140	ILE	-	expression tag	UNP P22629
B	141	ASP	-	expression tag	UNP P22629
B	142	ALA	-	expression tag	UNP P22629
B	143	ALA	-	expression tag	UNP P22629
B	144	LYS	-	expression tag	UNP P22629
B	145	LYS	-	expression tag	UNP P22629
B	146	ALA	-	expression tag	UNP P22629

Continued on next page...

Continued from previous page...

Chain	Residue	Modelled	Actual	Comment	Reference
B	147	GLY	-	expression tag	UNP P22629
B	148	VAL	-	expression tag	UNP P22629
B	149	ASN	-	expression tag	UNP P22629
B	150	ASN	-	expression tag	UNP P22629
B	151	GLY	-	expression tag	UNP P22629
B	152	ASN	-	expression tag	UNP P22629
B	153	PRO	-	expression tag	UNP P22629
B	154	LEU	-	expression tag	UNP P22629
B	155	ASP	-	expression tag	UNP P22629
B	156	ALA	-	expression tag	UNP P22629
B	157	VAL	-	expression tag	UNP P22629
B	158	GLN	-	expression tag	UNP P22629
B	159	GLN	-	expression tag	UNP P22629

- Molecule 2 is chloro{di-tert-butyl[2-(5-[(3aS,4S,6aR)-2-oxohexahydro-1H-thieno[3,4-d]imidazol-4-yl]pentanoyl)amino)ethyl]-lambda 5 -phosphanyl}(1-phenylprop-1-ene-1,3-diyl-kappa a 2 C 1 ,C 3)palladium (three-letter code: SVP) (formula: C₂₉H₄₆ClN₃O₂PPdS).



Mol	Chain	Residues	Atoms								ZeroOcc	AltConf
			Total	C	Cl	N	O	P	Pd	S		
2	A	1	29	20	1	3	2	1	1	1	0	0
2	B	1	29	20	1	3	2	1	1	1	0	0

- Molecule 3 is CHLORIDE ION (three-letter code: CL) (formula: Cl).

Mol	Chain	Residues	Atoms		ZeroOcc	AltConf
3	B	1	Total 1	Cl 1	0	0
3	A	1	Total 1	Cl 1	0	0

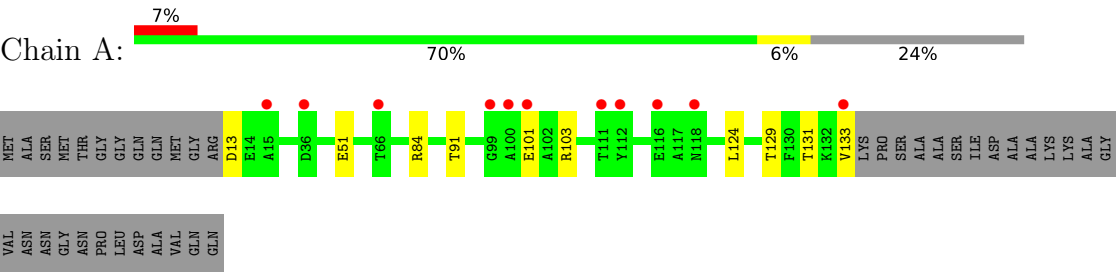
- Molecule 4 is water.

Mol	Chain	Residues	Atoms		ZeroOcc	AltConf
4	A	22	Total 22	O 22	0	0
4	B	28	Total 28	O 28	0	0

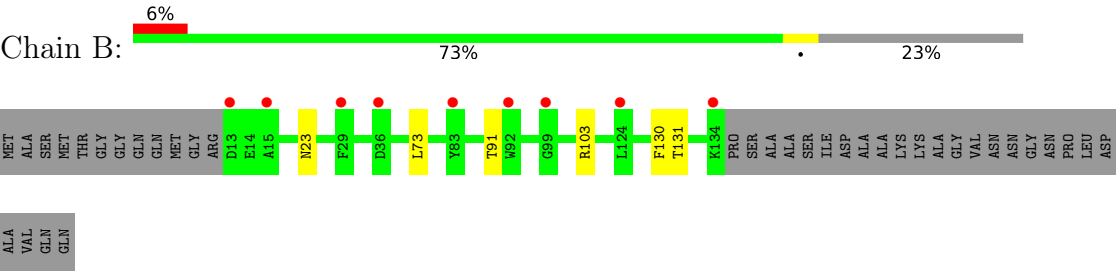
3 Residue-property plots [i](#)

These plots are drawn for all protein, RNA and DNA chains in the entry. The first graphic for a chain summarises the proportions of the various outlier classes displayed in the second graphic. The second graphic shows the sequence view annotated by issues in geometry and electron density. Residues are color-coded according to the number of geometric quality criteria for which they contain at least one outlier: green = 0, yellow = 1, orange = 2 and red = 3 or more. A red dot above a residue indicates a poor fit to the electron density ($RSRZ > 2$). Stretches of 2 or more consecutive residues without any outlier are shown as a green connector. Residues present in the sample, but not in the model, are shown in grey.

• Molecule 1: Streptavidin



• Molecule 1: Streptavidin



4 Data and refinement statistics

Property	Value	Source
Space group	C 2 2 21	Depositor
Cell constants a, b, c, α , β , γ	81.37Å 81.46Å 90.81Å 90.00° 90.00° 90.00°	Depositor
Resolution (Å)	48.62 – 1.79 48.62 – 1.79	Depositor EDS
% Data completeness (in resolution range)	97.2 (48.62-1.79) 97.6 (48.62-1.79)	Depositor EDS
R_{merge}	0.09	Depositor
R_{sym}	(Not available)	Depositor
$\langle I/\sigma(I) \rangle$ ¹	1.80 (at 1.79Å)	Xtriage
Refinement program	PHENIX 1.9_1692	Depositor
R, R_{free}	0.223 , 0.256 0.226 , 0.258	Depositor DCC
R_{free} test set	1400 reflections (5.00%)	wwPDB-VP
Wilson B-factor (Å ²)	19.3	Xtriage
Anisotropy	0.475	Xtriage
Bulk solvent k_{sol} (e/Å ³), B_{sol} (Å ²)	0.38 , 51.4	EDS
L-test for twinning ²	$\langle L \rangle = 0.44$, $\langle L^2 \rangle = 0.27$	Xtriage
Estimated twinning fraction	0.000 for -k,-h,-l	Xtriage
F_o, F_c correlation	0.95	EDS
Total number of atoms	1973	wwPDB-VP
Average B, all atoms (Å ²)	24.0	wwPDB-VP

Xtriage's analysis on translational NCS is as follows: *The analyses of the Patterson function reveals a significant off-origin peak that is 57.21 % of the origin peak, indicating pseudo-translational symmetry. The chance of finding a peak of this or larger height randomly in a structure without pseudo-translational symmetry is equal to 2.4476e-05. The detected translational NCS is most likely also responsible for the elevated intensity ratio.*

¹Intensities estimated from amplitudes.

²Theoretical values of $\langle |L| \rangle$, $\langle L^2 \rangle$ for acentric reflections are 0.5, 0.333 respectively for untwinned datasets, and 0.375, 0.2 for perfectly twinned datasets.

5 Model quality

5.1 Standard geometry

Bond lengths and bond angles in the following residue types are not validated in this section: SVP, CL

The Z score for a bond length (or angle) is the number of standard deviations the observed value is removed from the expected value. A bond length (or angle) with $|Z| > 5$ is considered an outlier worth inspection. RMSZ is the root-mean-square of all Z scores of the bond lengths (or angles).

Mol	Chain	Bond lengths		Bond angles	
		RMSZ	$\# Z > 5$	RMSZ	$\# Z > 5$
1	A	0.36	0/959	0.59	0/1316
1	B	0.36	0/964	0.59	0/1320
All	All	0.36	0/1923	0.59	0/2636

There are no bond length outliers.

There are no bond angle outliers.

There are no chirality outliers.

There are no planarity outliers.

5.2 Too-close contacts

In the following table, the Non-H and H(model) columns list the number of non-hydrogen atoms and hydrogen atoms in the chain respectively. The H(added) column lists the number of hydrogen atoms added and optimized by MolProbity. The Clashes column lists the number of clashes within the asymmetric unit, whereas Symm-Clashes lists symmetry related clashes.

Mol	Chain	Non-H	H(model)	H(added)	Clashes	Symm-Clashes
1	A	929	0	859	9	0
1	B	934	0	859	3	0
2	A	29	0	38	3	0
2	B	29	0	38	3	0
3	A	1	0	0	0	0
3	B	1	0	0	0	0
4	A	22	0	0	1	0
4	B	28	0	0	0	0
All	All	1973	0	1794	16	0

The all-atom clashscore is defined as the number of clashes found per 1000 atoms (including hydrogen atoms). The all-atom clashscore for this structure is 4.

The worst 5 of 16 close contacts within the same asymmetric unit are listed below, sorted by their clash magnitude.

Atom-1	Atom-2	Interatomic distance (Å)	Clash overlap (Å)
1:A:124:LEU:HD11	2:A:201:SVP:H24	1.80	0.63
1:A:131[A]:THR:HG22	1:A:133:VAL:H	1.64	0.62
2:A:201:SVP:H23	2:A:201:SVP:CL	2.41	0.57
1:B:103:ARG:HG2	1:B:131:THR:HG22	1.86	0.56
2:B:201:SVP:CL	2:B:201:SVP:H17	2.43	0.55

There are no symmetry-related clashes.

5.3 Torsion angles [i](#)

5.3.1 Protein backbone [i](#)

In the following table, the Percentiles column shows the percent Ramachandran outliers of the chain as a percentile score with respect to all X-ray entries followed by that with respect to entries of similar resolution.

The Analysed column shows the number of residues for which the backbone conformation was analysed, and the total number of residues.

Mol	Chain	Analysed	Favoured	Allowed	Outliers	Percentiles	
1	A	123/159 (77%)	120 (98%)	3 (2%)	0	100	100
1	B	123/159 (77%)	118 (96%)	5 (4%)	0	100	100
All	All	246/318 (77%)	238 (97%)	8 (3%)	0	100	100

There are no Ramachandran outliers to report.

5.3.2 Protein sidechains [i](#)

In the following table, the Percentiles column shows the percent sidechain outliers of the chain as a percentile score with respect to all X-ray entries followed by that with respect to entries of similar resolution.

The Analysed column shows the number of residues for which the sidechain conformation was analysed, and the total number of residues.

Mol	Chain	Analysed	Rotameric	Outliers	Percentiles	
1	A	92/115 (80%)	92 (100%)	0	100	100

Continued on next page...

Continued from previous page...

Mol	Chain	Analysed	Rotameric	Outliers	Percentiles	
1	B	92/115 (80%)	91 (99%)	1 (1%)	76	71
All	All	184/230 (80%)	183 (100%)	1 (0%)	87	89

All (1) residues with a non-rotameric sidechain are listed below:

Mol	Chain	Res	Type
1	B	73	LEU

Some sidechains can be flipped to improve hydrogen bonding and reduce clashes. There are no such sidechains identified.

5.3.3 RNA [i](#)

There are no RNA molecules in this entry.

5.4 Non-standard residues in protein, DNA, RNA chains [i](#)

There are no non-standard protein/DNA/RNA residues in this entry.

5.5 Carbohydrates [i](#)

There are no carbohydrates in this entry.

5.6 Ligand geometry [i](#)

Of 4 ligands modelled in this entry, 2 are monoatomic - leaving 2 for Mogul analysis.

In the following table, the Counts columns list the number of bonds (or angles) for which Mogul statistics could be retrieved, the number of bonds (or angles) that are observed in the model and the number of bonds (or angles) that are defined in the Chemical Component Dictionary. The Link column lists molecule types, if any, to which the group is linked. The Z score for a bond length (or angle) is the number of standard deviations the observed value is removed from the expected value. A bond length (or angle) with $|Z| > 2$ is considered an outlier worth inspection. RMSZ is the root-mean-square of all Z scores of the bond lengths (or angles).

Mol	Type	Chain	Res	Link	Bond lengths			Bond angles		
					Counts	RMSZ	$\# Z > 2$	Counts	RMSZ	$\# Z > 2$
2	SVP	A	201	-	25,30,41	0.69	0	38,45,63	0.99	2 (5%)
2	SVP	B	201	-	25,30,41	0.73	0	38,45,63	1.13	5 (13%)

In the following table, the Chirals column lists the number of chiral outliers, the number of chiral centers analysed, the number of these observed in the model and the number defined in the Chemical Component Dictionary. Similar counts are reported in the Torsion and Rings columns. '-' means no outliers of that kind were identified.

Mol	Type	Chain	Res	Link	Chirals	Torsions	Rings
2	SVP	A	201	-	-	0/25/56/78	0/2/2/4
2	SVP	B	201	-	-	0/25/56/78	0/2/2/4

There are no bond length outliers.

The worst 5 of 7 bond angle outliers are listed below:

Mol	Chain	Res	Type	Atoms	Z	Observed(°)	Ideal(°)
2	B	201	SVP	N32-C33-N35	-3.01	106.46	108.83
2	A	201	SVP	C37-C36-N35	-2.44	110.68	113.15
2	B	201	SVP	C37-C36-C31	-2.41	106.69	108.70
2	B	201	SVP	C36-N35-C33	2.08	114.72	112.45
2	B	201	SVP	C31-N32-C33	2.09	114.53	112.68

There are no chirality outliers.

There are no torsion outliers.

There are no ring outliers.

2 monomers are involved in 6 short contacts:

Mol	Chain	Res	Type	Clashes	Symm-Clashes
2	A	201	SVP	3	0
2	B	201	SVP	3	0

5.7 Other polymers [i](#)

There are no such residues in this entry.

5.8 Polymer linkage issues [i](#)

There are no chain breaks in this entry.

6 Fit of model and data [i](#)

6.1 Protein, DNA and RNA chains [i](#)

In the following table, the column labelled ‘#RSRZ> 2’ contains the number (and percentage) of RSRZ outliers, followed by percent RSRZ outliers for the chain as percentile scores relative to all X-ray entries and entries of similar resolution. The OWAB column contains the minimum, median, 95th percentile and maximum values of the occupancy-weighted average B-factor per residue. The column labelled ‘Q< 0.9’ lists the number of (and percentage) of residues with an average occupancy less than 0.9.

Mol	Chain	Analysed	<RSRZ>	#RSRZ>2	OWAB(Å ²)	Q<0.9
1	A	121/159 (76%)	0.70	11 (9%) 9 7	13, 22, 40, 63	1 (0%)
1	B	122/159 (76%)	0.81	9 (7%) 14 11	12, 22, 40, 71	0
All	All	243/318 (76%)	0.75	20 (8%) 11 9	12, 22, 40, 71	1 (0%)

The worst 5 of 20 RSRZ outliers are listed below:

Mol	Chain	Res	Type	RSRZ
1	A	99	GLY	4.6
1	B	99	GLY	4.6
1	B	134	LYS	4.1
1	A	101	GLU	3.9
1	A	100	ALA	3.8

6.2 Non-standard residues in protein, DNA, RNA chains [i](#)

There are no non-standard protein/DNA/RNA residues in this entry.

6.3 Carbohydrates [i](#)

There are no carbohydrates in this entry.

6.4 Ligands [i](#)

In the following table, the Atoms column lists the number of modelled atoms in the group and the number defined in the chemical component dictionary. The B-factors column lists the minimum, median, 95th percentile and maximum values of B factors of atoms in the group. The column labelled ‘Q< 0.9’ lists the number of atoms with occupancy less than 0.9.

Mol	Type	Chain	Res	Atoms	RSCC	RSR	B-factors(\AA^2)	Q<0.9
3	CL	A	202	1/1	0.91	0.08	48,48,48,48	0
3	CL	B	202	1/1	0.94	0.07	49,49,49,49	0
2	SVP	A	201	29/38	0.94	0.14	15,24,61,111	0
2	SVP	B	201	29/38	0.95	0.14	14,27,59,81	0

6.5 Other polymers [i](#)

There are no such residues in this entry.