



Full wwPDB X-ray Structure Validation Report ⓘ

Aug 29, 2018 – 03:52 PM EDT

PDB ID : 6CXO
Title : Complement component-9
Authors : Law, R.H.P.; Spicer, B.A.; Caradoc-Davies, T.T.
Deposited on : 2018-04-03
Resolution : 2.20 Å(reported)

This is a Full wwPDB X-ray Structure Validation Report for a publicly released PDB entry.

We welcome your comments at validation@mail.wwpdb.org

A user guide is available at

<https://www.wwpdb.org/validation/2017/XrayValidationReportHelp>

with specific help available everywhere you see the ⓘ symbol.

The following versions of software and data (see [references ⓘ](#)) were used in the production of this report:

MolProbity : 4.02b-467
Mogul : 1.7.3 (157068), CSD as539be (2018)
Xtriage (Phenix) : 1.13
EDS : rb-20031172
Percentile statistics : 20171227.v01 (using entries in the PDB archive December 27th 2017)
Refmac : 5.8.0158
CCP4 : 7.0 (Gargrove)
Ideal geometry (proteins) : Engh & Huber (2001)
Ideal geometry (DNA, RNA) : Parkinson et al. (1996)
Validation Pipeline (wwPDB-VP) : rb-20031172

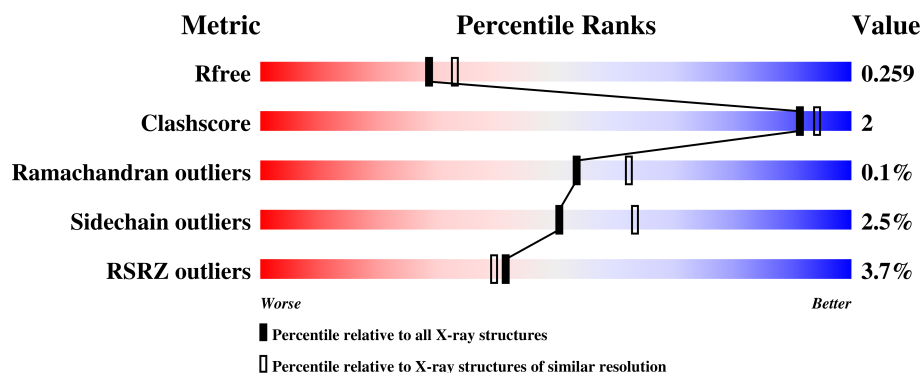
1 Overall quality at a glance

The following experimental techniques were used to determine the structure:

X-RAY DIFFRACTION


The reported resolution of this entry is 2.20 Å.

Percentile scores (ranging between 0-100) for global validation metrics of the entry are shown in the following graphic. The table shows the number of entries on which the scores are based.



Metric	Whole archive (#Entries)	Similar resolution (#Entries, resolution range(Å))
R_{free}	111664	4343 (2.20-2.20)
Clashscore	122126	5027 (2.20-2.20)
Ramachandran outliers	120053	4952 (2.20-2.20)
Sidechain outliers	120020	4953 (2.20-2.20)
RSRZ outliers	108989	4245 (2.20-2.20)

The table below summarises the geometric issues observed across the polymeric chains and their fit to the electron density. The red, orange, yellow and green segments on the lower bar indicate the fraction of residues that contain outliers for ≥ 3 , 2, 1 and 0 types of geometric quality criteria. A grey segment represents the fraction of residues that are not modelled. The numeric value for each fraction is indicated below the corresponding segment, with a dot representing fractions $\leq 5\%$. The upper red bar (where present) indicates the fraction of residues that have poor fit to the electron density. The numeric value is given above the bar.

Mol	Chain	Length	Quality of chain
1	A	529	 4% 83% 5% 12%
1	B	529	 3% 78% 7% 15%

2 Entry composition

There are 7 unique types of molecules in this entry. The entry contains 7554 atoms, of which 0 are hydrogens and 0 are deuteriums.

In the tables below, the ZeroOcc column contains the number of atoms modelled with zero occupancy, the AltConf column contains the number of residues with at least one atom in alternate conformation and the Trace column contains the number of residues modelled with at most 2 atoms.

- Molecule 1 is a protein called Complement component C9.

Mol	Chain	Residues	Atoms					ZeroOcc	AltConf	Trace
1	A	465	Total	C	N	O	S	0	0	0
			3632	2280	619	703	30			
1	B	449	Total	C	N	O	S	0	0	0
			3528	2219	602	675	32			

There are 8 discrepancies between the modelled and reference sequences:

Chain	Residue	Modelled	Actual	Comment	Reference
A	0	ASP	-	expression tag	UNP P06683
A	28	GLU	ASN	engineered mutation	UNP P06683
A	243	ASP	ASN	engineered mutation	UNP P06683
A	397	ASP	ASN	engineered mutation	UNP P06683
B	0	ASP	-	expression tag	UNP P06683
B	28	GLU	ASN	engineered mutation	UNP P06683
B	243	ASP	ASN	engineered mutation	UNP P06683
B	397	ASP	ASN	engineered mutation	UNP P06683

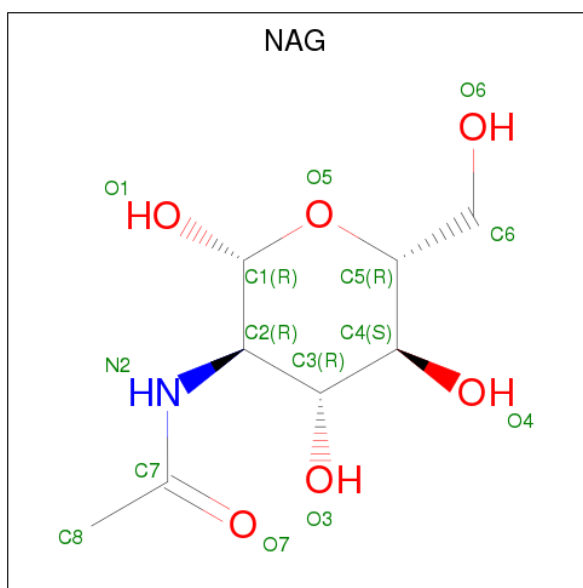
- Molecule 2 is ZINC ION (three-letter code: ZN) (formula: Zn).

Mol	Chain	Residues	Atoms		ZeroOcc	AltConf
2	B	3	Total	Zn	0	0
			3	3		
2	A	2	Total	Zn	0	0
			2	2		

- Molecule 3 is CALCIUM ION (three-letter code: CA) (formula: Ca).

Mol	Chain	Residues	Atoms		ZeroOcc	AltConf
3	B	1	Total	Ca	0	0
			1	1		
3	A	1	Total	Ca	0	0
			1	1		

- Molecule 4 is N-ACETYL-D-GLUCOSAMINE (three-letter code: NAG) (formula: $C_8H_{15}NO_6$).

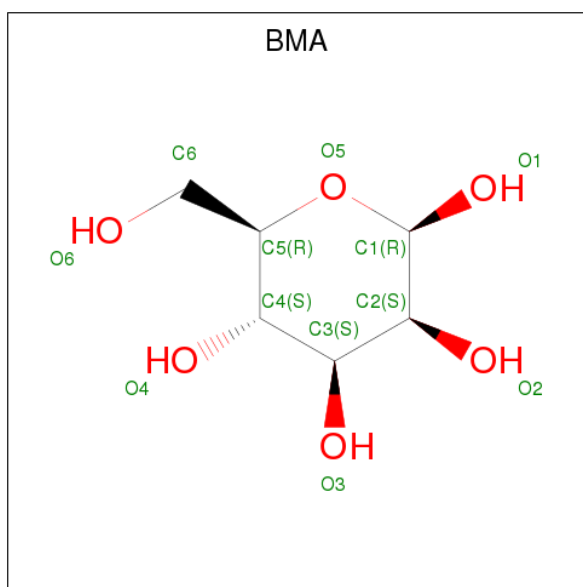


Mol	Chain	Residues	Atoms				ZeroOcc	AltConf
4	A	1	Total	C	N	O	0	0
			14	8	1	5		
4	B	1	Total	C	N	O	0	0
			14	8	1	5		

- Molecule 5 is MAGNESIUM ION (three-letter code: MG) (formula: Mg).

Mol	Chain	Residues	Atoms		ZeroOcc	AltConf
5	B	1	Total	Mg	0	0
			1	1		
5	A	1	Total	Mg	0	0
			1	1		

- Molecule 6 is BETA-D-MANNOSE (three-letter code: BMA) (formula: $C_6H_{12}O_6$).



Mol	Chain	Residues	Atoms			ZeroOcc	AltConf
6	A	1	Total	C	O	0	0
			11	6	5		
6	B	1	Total	C	O	0	0
			11	6	5		

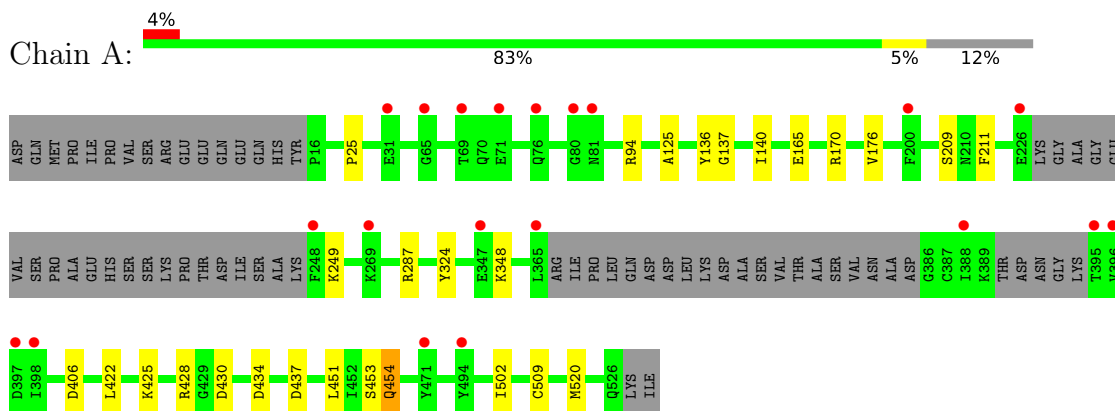
- Molecule 7 is water.

Mol	Chain	Residues	Atoms		ZeroOcc	AltConf
7	A	130	Total	O	0	0
			130	130		
7	B	205	Total	O	0	0
			205	205		

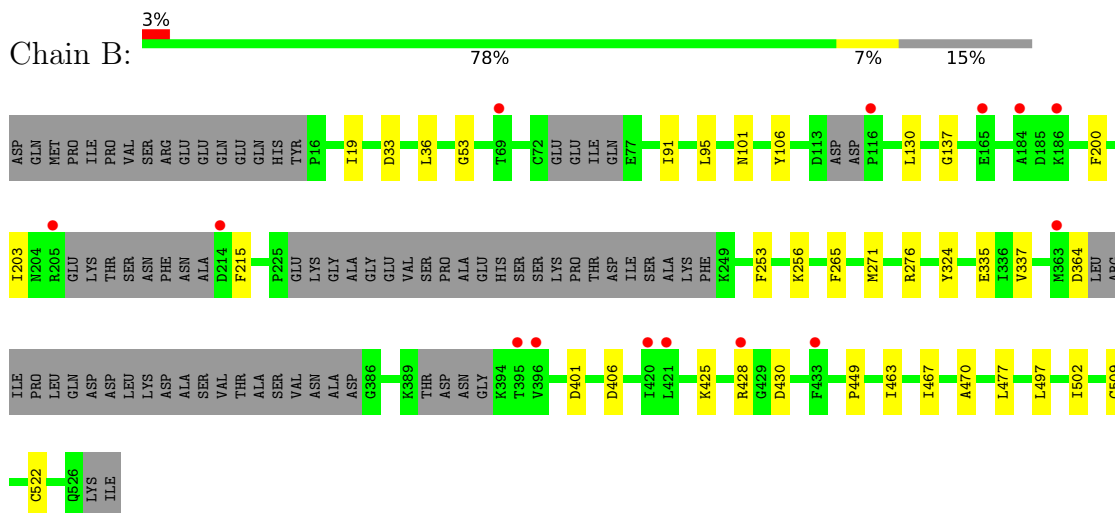
3 Residue-property plots [i](#)

These plots are drawn for all protein, RNA and DNA chains in the entry. The first graphic for a chain summarises the proportions of the various outlier classes displayed in the second graphic. The second graphic shows the sequence view annotated by issues in geometry and electron density. Residues are color-coded according to the number of geometric quality criteria for which they contain at least one outlier: green = 0, yellow = 1, orange = 2 and red = 3 or more. A red dot above a residue indicates a poor fit to the electron density ($RSRZ > 2$). Stretches of 2 or more consecutive residues without any outlier are shown as a green connector. Residues present in the sample, but not in the model, are shown in grey.

• Molecule 1: Complement component C9



• Molecule 1: Complement component C9



4 Data and refinement statistics

Property	Value	Source
Space group	P 2 ₁ 2 ₁ 2 ₁	Depositor
Cell constants a, b, c, α , β , γ	52.59Å 149.21Å 165.83Å 90.00° 90.00° 90.00°	Depositor
Resolution (Å)	49.74 – 2.20 49.74 – 2.20	Depositor EDS
% Data completeness (in resolution range)	98.2 (49.74-2.20) 98.4 (49.74-2.20)	Depositor EDS
R_{merge}	0.07	Depositor
R_{sym}	(Not available)	Depositor
$\langle I/\sigma(I) \rangle$ ¹	1.53 (at 2.20Å)	Xtriage
Refinement program	BUSTER 2.10.3	Depositor
R, R_{free}	0.209 , 0.251 0.214 , 0.259	Depositor DCC
R_{free} test set	3369 reflections (5.10%)	wwPDB-VP
Wilson B-factor (Å ²)	53.0	Xtriage
Anisotropy	0.492	Xtriage
Bulk solvent k_{sol} (e/Å ³), B_{sol} (Å ²)	0.33 , 61.5	EDS
L-test for twinning ²	$\langle L \rangle = 0.50$, $\langle L^2 \rangle = 0.34$	Xtriage
Estimated twinning fraction	No twinning to report.	Xtriage
F_o, F_c correlation	0.95	EDS
Total number of atoms	7554	wwPDB-VP
Average B, all atoms (Å ²)	67.0	wwPDB-VP

Xtriage's analysis on translational NCS is as follows: *The largest off-origin peak in the Patterson function is 3.47% of the height of the origin peak. No significant pseudotranslation is detected.*

¹Intensities estimated from amplitudes.

²Theoretical values of $\langle |L| \rangle$, $\langle L^2 \rangle$ for acentric reflections are 0.5, 0.333 respectively for untwinned datasets, and 0.375, 0.2 for perfectly twinned datasets.

5 Model quality [i](#)

5.1 Standard geometry [i](#)

Bond lengths and bond angles in the following residue types are not validated in this section: ZN, MG, BMA, CA, NAG

The Z score for a bond length (or angle) is the number of standard deviations the observed value is removed from the expected value. A bond length (or angle) with $|Z| > 5$ is considered an outlier worth inspection. RMSZ is the root-mean-square of all Z scores of the bond lengths (or angles).

Mol	Chain	Bond lengths		Bond angles	
		RMSZ	$\# Z > 5$	RMSZ	$\# Z > 5$
1	A	0.49	0/3702	0.66	0/4996
1	B	0.52	0/3594	0.68	0/4839
All	All	0.51	0/7296	0.67	0/9835

There are no bond length outliers.

There are no bond angle outliers.

There are no chirality outliers.

There are no planarity outliers.

5.2 Too-close contacts [i](#)

In the following table, the Non-H and H(model) columns list the number of non-hydrogen atoms and hydrogen atoms in the chain respectively. The H(added) column lists the number of hydrogen atoms added and optimized by MolProbity. The Clashes column lists the number of clashes within the asymmetric unit, whereas Symm-Clashes lists symmetry related clashes.

Mol	Chain	Non-H	H(model)	H(added)	Clashes	Symm-Clashes
1	A	3632	0	3416	9	0
1	B	3528	0	3362	15	0
2	A	2	0	0	0	0
2	B	3	0	0	0	0
3	A	1	0	0	0	0
3	B	1	0	0	0	0
4	A	14	0	13	0	0
4	B	14	0	13	1	0
5	A	1	0	0	0	0
5	B	1	0	0	0	0
6	A	11	0	10	0	0

Continued on next page...

Continued from previous page...

Mol	Chain	Non-H	H(model)	H(added)	Clashes	Symm-Clashes
6	B	11	0	10	0	0
7	A	130	0	0	0	0
7	B	205	0	0	0	0
All	All	7554	0	6824	25	0

The all-atom clashscore is defined as the number of clashes found per 1000 atoms (including hydrogen atoms). The all-atom clashscore for this structure is 2.

All (25) close contacts within the same asymmetric unit are listed below, sorted by their clash magnitude.

Atom-1	Atom-2	Interatomic distance (Å)	Clash overlap (Å)
1:B:200:PHE:CD2	1:B:265:PHE:HZ	2.08	0.72
1:B:276:ARG:HG2	1:B:335:GLU:HG2	1.81	0.62
1:A:176:VAL:HG23	1:A:287:ARG:HB3	1.87	0.55
1:A:502:ILE:HD11	1:A:509:CYS:HB3	1.90	0.53
4:B:603:NAG:O7	4:B:603:NAG:C1	2.57	0.51
1:B:91:ILE:HD12	1:B:95:LEU:HB2	1.92	0.51
1:A:434:ASP:HB3	1:A:437:ASP:HB2	1.93	0.50
1:B:137:GLY:HA2	1:B:324:TYR:HA	1.95	0.48
1:A:137:GLY:HA2	1:A:324:TYR:HA	1.96	0.47
1:A:140:ILE:HG22	1:A:211:PHE:HB2	1.96	0.47
1:A:140:ILE:O	1:A:209:SER:HA	2.16	0.46
1:B:130:LEU:HD12	1:B:449:PRO:HG3	1.98	0.46
1:B:101:ASN:HB2	1:B:106:TYR:CE1	2.51	0.45
1:B:502:ILE:HD11	1:B:509:CYS:HB3	1.97	0.45
1:A:125:ALA:HB1	1:A:170:ARG:HB2	1.99	0.45
1:B:200:PHE:CD2	1:B:265:PHE:CZ	2.97	0.44
1:B:19:ILE:O	1:B:53:GLY:HA3	2.18	0.43
1:A:451:LEU:HG	1:A:454:GLN:HE21	1.84	0.43
1:B:425:LYS:HA	1:B:428:ARG:HE	1.84	0.42
1:B:33:ASP:HB3	1:B:36:LEU:HB2	2.02	0.42
1:B:497:LEU:O	1:B:522:CYS:HB2	2.20	0.41
1:B:463:ILE:HD11	1:B:477:LEU:HD12	2.01	0.41
1:A:425:LYS:HG2	1:A:428:ARG:HH22	1.86	0.40
1:B:203:ILE:HD11	1:B:337:VAL:HG21	2.03	0.40
1:B:467:ILE:HG13	1:B:470:ALA:HB2	2.04	0.40

There are no symmetry-related clashes.

5.3 Torsion angles

5.3.1 Protein backbone

In the following table, the Percentiles column shows the percent Ramachandran outliers of the chain as a percentile score with respect to all X-ray entries followed by that with respect to entries of similar resolution.

The Analysed column shows the number of residues for which the backbone conformation was analysed, and the total number of residues.

Mol	Chain	Analysed	Favoured	Allowed	Outliers	Percentiles	
1	A	457/529 (86%)	444 (97%)	12 (3%)	1 (0%)	49	57
1	B	435/529 (82%)	428 (98%)	7 (2%)	0	100	100
All	All	892/1058 (84%)	872 (98%)	19 (2%)	1 (0%)	53	62

All (1) Ramachandran outliers are listed below:

Mol	Chain	Res	Type
1	A	165	GLU

5.3.2 Protein sidechains

In the following table, the Percentiles column shows the percent sidechain outliers of the chain as a percentile score with respect to all X-ray entries followed by that with respect to entries of similar resolution.

The Analysed column shows the number of residues for which the sidechain conformation was analysed, and the total number of residues.

Mol	Chain	Analysed	Rotameric	Outliers	Percentiles	
1	A	389/469 (83%)	378 (97%)	11 (3%)	47	59
1	B	384/469 (82%)	376 (98%)	8 (2%)	56	70
All	All	773/938 (82%)	754 (98%)	19 (2%)	50	63

All (19) residues with a non-rotameric sidechain are listed below:

Mol	Chain	Res	Type
1	A	25	PRO
1	A	94	ARG
1	A	136	TYR
1	A	249	LYS
1	A	348	LYS

Continued on next page...

Continued from previous page...

Mol	Chain	Res	Type
1	A	406	ASP
1	A	422	LEU
1	A	430	ASP
1	A	453	SER
1	A	454	GLN
1	A	520	MET
1	B	215	PHE
1	B	253	PHE
1	B	256	LYS
1	B	271	MET
1	B	364	ASP
1	B	401	ASP
1	B	406	ASP
1	B	430	ASP

Some sidechains can be flipped to improve hydrogen bonding and reduce clashes. All (1) such sidechains are listed below:

Mol	Chain	Res	Type
1	A	454	GLN

5.3.3 RNA [i](#)

There are no RNA molecules in this entry.

5.4 Non-standard residues in protein, DNA, RNA chains [i](#)

There are no non-standard protein/DNA/RNA residues in this entry.

5.5 Carbohydrates [i](#)

There are no carbohydrates in this entry.

5.6 Ligand geometry [i](#)

Of 13 ligands modelled in this entry, 9 are monoatomic - leaving 4 for Mogul analysis.

In the following table, the Counts columns list the number of bonds (or angles) for which Mogul statistics could be retrieved, the number of bonds (or angles) that are observed in the model and the number of bonds (or angles) that are defined in the Chemical Component Dictionary. The

Link column lists molecule types, if any, to which the group is linked. The Z score for a bond length (or angle) is the number of standard deviations the observed value is removed from the expected value. A bond length (or angle) with $|Z| > 2$ is considered an outlier worth inspection. RMSZ is the root-mean-square of all Z scores of the bond lengths (or angles).

Mol	Type	Chain	Res	Link	Bond lengths			Bond angles		
					Counts	RMSZ	# Z > 2	Counts	RMSZ	# Z > 2
4	NAG	A	603	1	14,14,15	0.35	0	17,19,21	0.26	0
6	BMA	A	605	1	11,11,12	0.42	0	15,15,17	0.48	0
4	NAG	B	603	1	14,14,15	0.41	0	17,19,21	0.27	0
6	BMA	B	605	1	11,11,12	0.52	0	15,15,17	0.67	0

In the following table, the Chirals column lists the number of chiral outliers, the number of chiral centers analysed, the number of these observed in the model and the number defined in the Chemical Component Dictionary. Similar counts are reported in the Torsion and Rings columns. '-' means no outliers of that kind were identified.

Mol	Type	Chain	Res	Link	Chirals	Torsions	Rings
4	NAG	A	603	1	-	0/6/23/26	0/1/1/1
6	BMA	A	605	1	-	0/2/19/22	1/1/1/1
4	NAG	B	603	1	-	0/6/23/26	0/1/1/1
6	BMA	B	605	1	-	0/2/19/22	1/1/1/1

There are no bond length outliers.

There are no bond angle outliers.

There are no chirality outliers.

There are no torsion outliers.

All (2) ring outliers are listed below:

Mol	Chain	Res	Type	Atoms
6	A	605	BMA	C1-C2-C3-C4-C5-O5
6	B	605	BMA	C1-C2-C3-C4-C5-O5

1 monomer is involved in 1 short contact:

Mol	Chain	Res	Type	Clashes	Symm-Clashes
4	B	603	NAG	1	0

5.7 Other polymers ⓘ

There are no such residues in this entry.

5.8 Polymer linkage issues ⓘ

There are no chain breaks in this entry.

6 Fit of model and data [i](#)

6.1 Protein, DNA and RNA chains [i](#)

In the following table, the column labelled ‘#RSRZ > 2’ contains the number (and percentage) of RSRZ outliers, followed by percent RSRZ outliers for the chain as percentile scores relative to all X-ray entries and entries of similar resolution. The OWAB column contains the minimum, median, 95th percentile and maximum values of the occupancy-weighted average B-factor per residue. The column labelled ‘Q < 0.9’ lists the number of (and percentage) of residues with an average occupancy less than 0.9.

Mol	Chain	Analysed	<RSRZ>	#RSRZ>2	OWAB(Å ²)	Q<0.9
1	A	465/529 (87%)	0.14	20 (4%) 35 33	44, 70, 104, 144	0
1	B	449/529 (84%)	-0.01	14 (3%) 49 46	38, 59, 96, 139	3 (0%)
All	All	914/1058 (86%)	0.06	34 (3%) 41 39	38, 65, 100, 144	3 (0%)

All (34) RSRZ outliers are listed below:

Mol	Chain	Res	Type	RSRZ
1	B	205	ARG	8.1
1	B	214	ASP	6.1
1	A	365	LEU	4.3
1	A	398	ILE	4.2
1	B	363	MET	4.2
1	B	69	THR	3.7
1	B	186	LYS	3.5
1	A	396	VAL	3.4
1	A	65	GLY	3.3
1	A	388	ILE	3.3
1	A	71	GLU	3.2
1	A	248	PHE	3.2
1	B	116	PRO	3.1
1	B	433	PHE	3.1
1	B	395	THR	3.0
1	A	494	TYR	2.9
1	B	428	ARG	2.8
1	A	347	GLU	2.7
1	A	397	ASP	2.6
1	A	226	GLU	2.6
1	B	420	ILE	2.6
1	B	184	ALA	2.5
1	A	76	GLN	2.5
1	A	200	PHE	2.4

Continued on next page...

Continued from previous page...

Mol	Chain	Res	Type	RSRZ
1	A	80	GLY	2.4
1	A	31	GLU	2.3
1	A	471	TYR	2.3
1	A	81	ASN	2.2
1	B	421	LEU	2.2
1	B	396	VAL	2.1
1	A	69	THR	2.1
1	A	269	LYS	2.1
1	B	165	GLU	2.0
1	A	395	THR	2.0

6.2 Non-standard residues in protein, DNA, RNA chains [i](#)

There are no non-standard protein/DNA/RNA residues in this entry.

6.3 Carbohydrates [i](#)

There are no carbohydrates in this entry.

6.4 Ligands [i](#)

In the following table, the Atoms column lists the number of modelled atoms in the group and the number defined in the chemical component dictionary. The B-factors column lists the minimum, median, 95th percentile and maximum values of B factors of atoms in the group. The column labelled 'Q< 0.9' lists the number of atoms with occupancy less than 0.9.

Mol	Type	Chain	Res	Atoms	RSCC	RSR	B-factors(Å ²)	Q<0.9
2	ZN	B	606	1/1	0.44	0.16	148,148,148,148	0
2	ZN	A	606	1/1	0.69	0.10	174,174,174,174	0
5	MG	B	604	1/1	0.79	0.38	94,94,94,94	0
5	MG	A	604	1/1	0.86	0.06	71,71,71,71	0
4	NAG	A	603	14/15	0.86	0.24	85,97,101,101	0
4	NAG	B	603	14/15	0.86	0.24	78,84,90,94	0
6	BMA	A	605	11/12	0.90	0.10	73,80,82,83	0
6	BMA	B	605	11/12	0.92	0.13	47,53,56,59	0
2	ZN	B	601	1/1	0.92	0.07	106,106,106,106	0
2	ZN	A	601	1/1	0.96	0.05	117,117,117,117	0
3	CA	A	602	1/1	0.97	0.05	65,65,65,65	0
2	ZN	B	607	1/1	0.97	0.10	99,99,99,99	0
3	CA	B	602	1/1	0.99	0.13	49,49,49,49	0

6.5 Other polymers [i](#)

There are no such residues in this entry.