



# Full wwPDB X-ray Structure Validation Report ⓘ

Jul 16, 2018 – 11:14 PM EDT

PDB ID : 6D0N  
Title : Crystal structure of a CLC-type fluoride/proton antiporter, V319G mutant  
Authors : Last, N.B.; Stockbridge, R.B.; Wilson, A.E.; Shane, T.; Kolmakova-Partensky, L.; Koide, A.; Koide, S.; Miller, C.  
Deposited on : 2018-04-10  
Resolution : 3.12 Å(reported)

This is a Full wwPDB X-ray Structure Validation Report for a publicly released PDB entry.

We welcome your comments at [validation@mail.wwpdb.org](mailto:validation@mail.wwpdb.org)

A user guide is available at

<https://www.wwpdb.org/validation/2017/XrayValidationReportHelp>

with specific help available everywhere you see the ⓘ symbol.

---

The following versions of software and data (see [references ⓘ](#)) were used in the production of this report:

MolProbity : 4.02b-467  
Mogul : 1.7.3 (157068), CSD as539be (2018)  
Xtriage (Phenix) : 1.13  
EDS : rb-20031172  
Percentile statistics : 20171227.v01 (using entries in the PDB archive December 27th 2017)  
Refmac : 5.8.0158  
CCP4 : 7.0 (Gargrove)  
Ideal geometry (proteins) : Engh & Huber (2001)  
Ideal geometry (DNA, RNA) : Parkinson et al. (1996)  
Validation Pipeline (wwPDB-VP) : rb-20031172

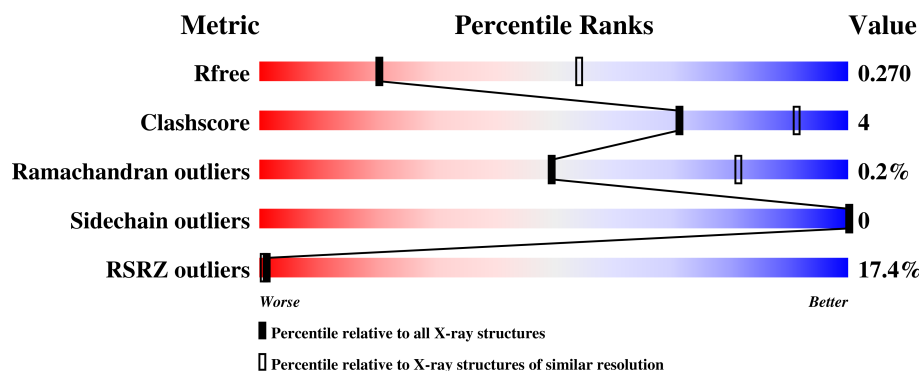
# 1 Overall quality at a glance

The following experimental techniques were used to determine the structure:

*X-RAY DIFFRACTION*

The reported resolution of this entry is 3.12 Å.

Percentile scores (ranging between 0-100) for global validation metrics of the entry are shown in the following graphic. The table shows the number of entries on which the scores are based.



Metric	Whole archive (#Entries)	Similar resolution (#Entries, resolution range(Å))
$R_{free}$	111664	1111 (3.14-3.10)
Clashscore	122126	1202 (3.14-3.10)
Ramachandran outliers	120053	1163 (3.14-3.10)
Sidechain outliers	120020	1163 (3.14-3.10)
RSRZ outliers	108989	1084 (3.14-3.10)

The table below summarises the geometric issues observed across the polymeric chains and their fit to the electron density. The red, orange, yellow and green segments on the lower bar indicate the fraction of residues that contain outliers for  $\geq 3$ , 2, 1 and 0 types of geometric quality criteria. A grey segment represents the fraction of residues that are not modelled. The numeric value for each fraction is indicated below the corresponding segment, with a dot representing fractions  $\leq 5\%$ . The upper red bar (where present) indicates the fraction of residues that have poor fit to the electron density. The numeric value is given above the bar.

Mol	Chain	Length	Quality of chain
1	A	421	<div> <div>16%</div> <div>82%</div> <div>12%</div> <div>6%</div> </div>
1	B	421	<div> <div>7%</div> <div>83%</div> <div>11%</div> <div>6%</div> </div>
2	C	93	<div> <div>35%</div> <div>92%</div> <div>•</div> <div>•</div> </div>
2	D	93	<div> <div>43%</div> <div>94%</div> <div>•</div> <div>5%</div> </div>

## 2 Entry composition

There are 6 unique types of molecules in this entry. The entry contains 7614 atoms, of which 0 are hydrogens and 0 are deuteriums.

In the tables below, the ZeroOcc column contains the number of atoms modelled with zero occupancy, the AltConf column contains the number of residues with at least one atom in alternate conformation and the Trace column contains the number of residues modelled with at most 2 atoms.

- Molecule 1 is a protein called CLC-type fluoride/proton antiporter.

Mol	Chain	Residues	Atoms					ZeroOcc	AltConf	Trace
1	A	395	Total	C	N	O	S	0	0	0
			3019	2028	467	513	11			
1	B	396	Total	C	N	O	S	0	0	0
			3030	2034	471	514	11			

There are 36 discrepancies between the modelled and reference sequences:

Chain	Residue	Modelled	Actual	Comment	Reference
A	-2	MET	-	expression tag	UNP C9CPP6
A	-1	ALA	-	expression tag	UNP C9CPP6
A	0	ALA	-	expression tag	UNP C9CPP6
A	1	ALA	-	expression tag	UNP C9CPP6
A	4	ILE	MET	engineered mutation	UNP C9CPP6
A	319	GLY	VAL	engineered mutation	UNP C9CPP6
A	407	THR	-	expression tag	UNP C9CPP6
A	408	ARG	-	expression tag	UNP C9CPP6
A	409	GLY	-	expression tag	UNP C9CPP6
A	410	SER	-	expression tag	UNP C9CPP6
A	411	GLY	-	expression tag	UNP C9CPP6
A	412	GLY	-	expression tag	UNP C9CPP6
A	413	HIS	-	expression tag	UNP C9CPP6
A	414	HIS	-	expression tag	UNP C9CPP6
A	415	HIS	-	expression tag	UNP C9CPP6
A	416	HIS	-	expression tag	UNP C9CPP6
A	417	HIS	-	expression tag	UNP C9CPP6
A	418	HIS	-	expression tag	UNP C9CPP6
B	-2	MET	-	expression tag	UNP C9CPP6
B	-1	ALA	-	expression tag	UNP C9CPP6
B	0	ALA	-	expression tag	UNP C9CPP6
B	1	ALA	-	expression tag	UNP C9CPP6
B	4	ILE	MET	engineered mutation	UNP C9CPP6
B	319	GLY	VAL	engineered mutation	UNP C9CPP6
B	407	THR	-	expression tag	UNP C9CPP6

*Continued on next page...*

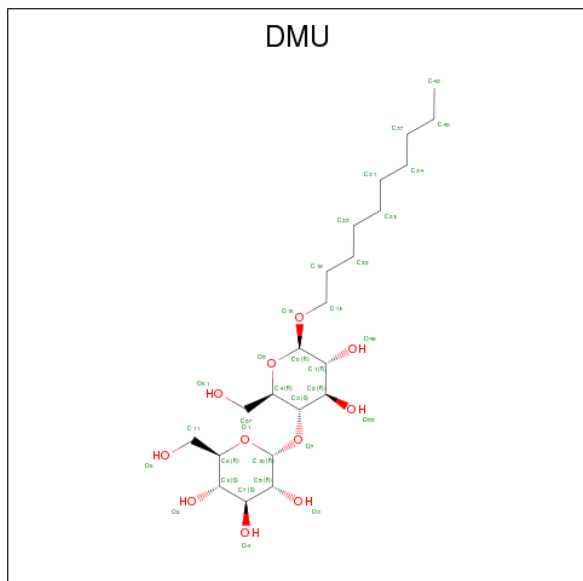
Continued from previous page...

Chain	Residue	Modelled	Actual	Comment	Reference
B	408	ARG	-	expression tag	UNP C9CPP6
B	409	GLY	-	expression tag	UNP C9CPP6
B	410	SER	-	expression tag	UNP C9CPP6
B	411	GLY	-	expression tag	UNP C9CPP6
B	412	GLY	-	expression tag	UNP C9CPP6
B	413	HIS	-	expression tag	UNP C9CPP6
B	414	HIS	-	expression tag	UNP C9CPP6
B	415	HIS	-	expression tag	UNP C9CPP6
B	416	HIS	-	expression tag	UNP C9CPP6
B	417	HIS	-	expression tag	UNP C9CPP6
B	418	HIS	-	expression tag	UNP C9CPP6

- Molecule 2 is a protein called Monobody.

Mol	Chain	Residues	Atoms					ZeroOcc	AltConf	Trace
2	D	88	Total	C	N	O	S	0	0	0
			668	427	104	136	1			
2	C	90	Total	C	N	O	S	0	0	0
			681	435	106	139	1			

- Molecule 3 is DECYL-BETA-D-MALTOPYRANOSIDE (three-letter code: DMU) (formula: C<sub>22</sub>H<sub>42</sub>O<sub>11</sub>).



Mol	Chain	Residues	Atoms			ZeroOcc	AltConf
3	A	1	Total	C	O	0	0
			33	22	11		

Continued on next page...

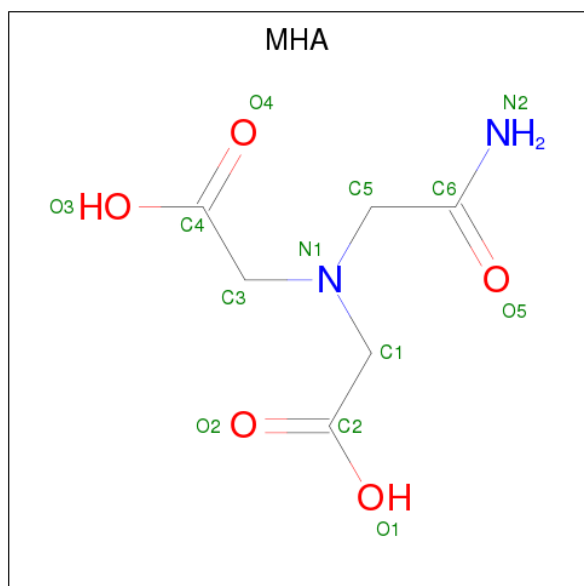
Continued from previous page...

Mol	Chain	Residues	Atoms			ZeroOcc	AltConf
3	A	1	Total	C	O	0	0
			33	22	11		
3	A	1	Total	C	O	0	0
			33	22	11		
3	B	1	Total	C	O	0	0
			33	22	11		
3	B	1	Total	C	O	0	0
			33	22	11		
3	B	1	Total	C	O	0	0
			26	15	11		

- Molecule 4 is FLUORIDE ION (three-letter code: F) (formula: F).

Mol	Chain	Residues	Atoms		ZeroOcc	AltConf
4	B	1	Total	F	0	0
			1	1		

- Molecule 5 is (CARBAMOYLMETHYL-CARBOXYMETHYL-AMINO)-ACETIC ACID (three-letter code: MHA) (formula: C<sub>6</sub>H<sub>10</sub>N<sub>2</sub>O<sub>5</sub>).



Mol	Chain	Residues	Atoms				ZeroOcc	AltConf
5	C	1	Total	C	N	O	0	0
			13	6	2	5		

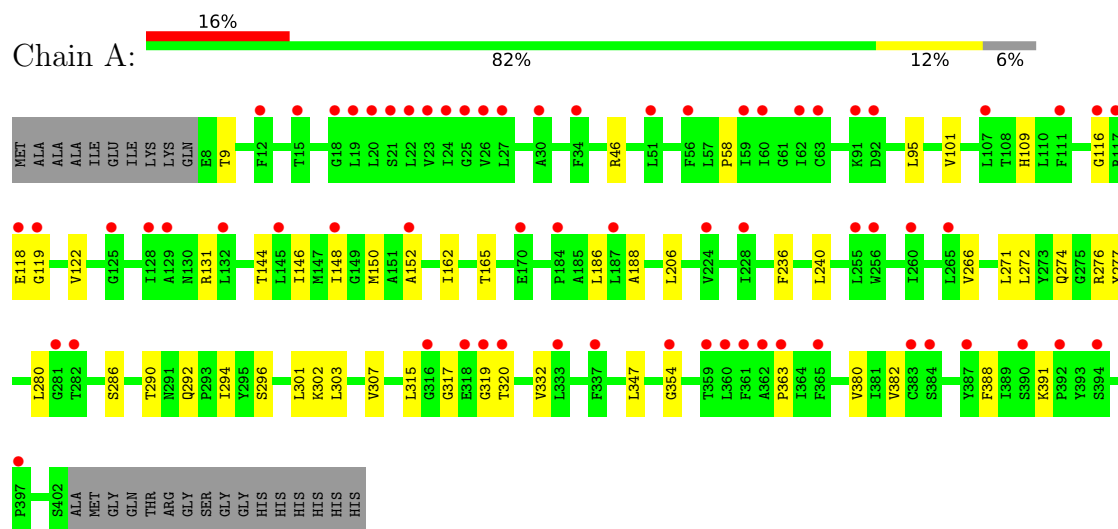
- Molecule 6 is water.

Mol	Chain	Residues	Atoms		ZeroOcc	AltConf
6	A	6	Total 6	O 6	0	0
6	B	5	Total 5	O 5	0	0

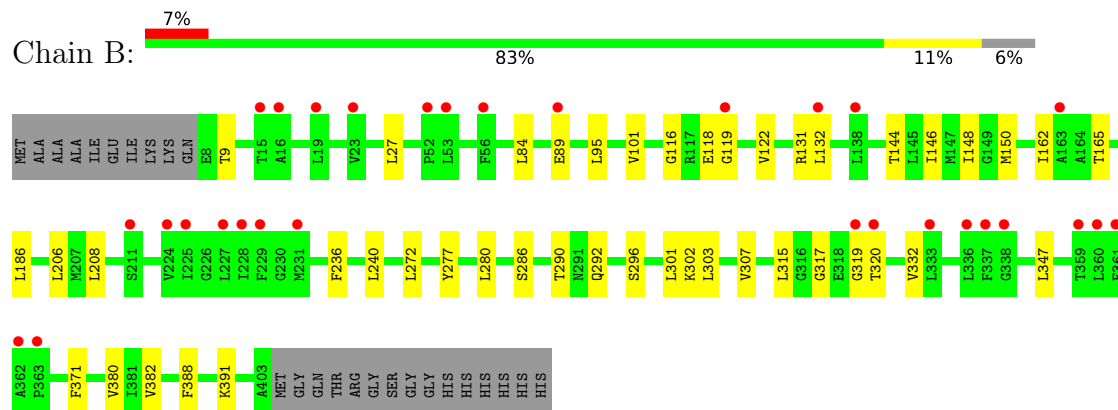
### 3 Residue-property plots

These plots are drawn for all protein, RNA and DNA chains in the entry. The first graphic for a chain summarises the proportions of the various outlier classes displayed in the second graphic. The second graphic shows the sequence view annotated by issues in geometry and electron density. Residues are color-coded according to the number of geometric quality criteria for which they contain at least one outlier: green = 0, yellow = 1, orange = 2 and red = 3 or more. A red dot above a residue indicates a poor fit to the electron density ( $RSRZ > 2$ ). Stretches of 2 or more consecutive residues without any outlier are shown as a green connector. Residues present in the sample, but not in the model, are shown in grey.

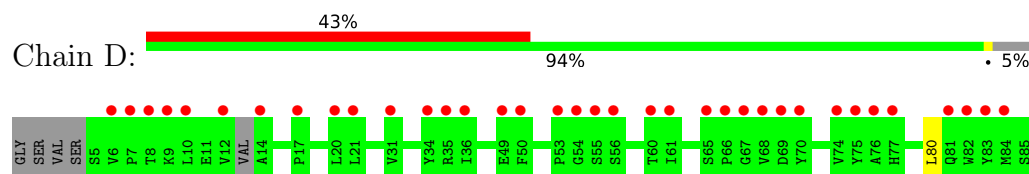
#### • Molecule 1: CLC-type fluoride/proton antiporter



#### • Molecule 1: CLC-type fluoride/proton antiporter

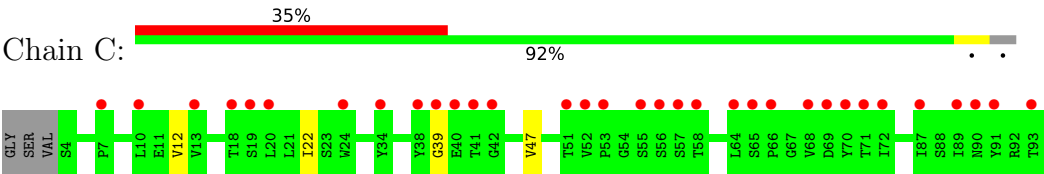


#### • Molecule 2: Monobody





● Molecule 2: Monobody





## 4 Data and refinement statistics

Property	Value	Source
Space group	P 21 21 21	Depositor
Cell constants a, b, c, $\alpha$ , $\beta$ , $\gamma$	118.11Å 124.84Å 135.48Å 90.00° 90.00° 90.00°	Depositor
Resolution (Å)	49.67 – 3.12 49.67 – 3.12	Depositor EDS
% Data completeness (in resolution range)	98.9 (49.67-3.12) 99.5 (49.67-3.12)	Depositor EDS
$R_{merge}$	0.08	Depositor
$R_{sym}$	(Not available)	Depositor
$\langle I/\sigma(I) \rangle$ <sup>1</sup>	1.60 (at 3.12Å)	Xtriage
Refinement program	PHENIX 1.13_2998	Depositor
R, $R_{free}$	0.248 , 0.270 0.248 , 0.270	Depositor DCC
$R_{free}$ test set	1778 reflections (4.93%)	wwPDB-VP
Wilson B-factor (Å <sup>2</sup> )	123.5	Xtriage
Anisotropy	0.499	Xtriage
Bulk solvent $k_{sol}$ (e/Å <sup>3</sup> ), $B_{sol}$ (Å <sup>2</sup> )	0.23 , 73.6	EDS
L-test for twinning <sup>2</sup>	$\langle  L  \rangle = 0.48$ , $\langle L^2 \rangle = 0.32$	Xtriage
Estimated twinning fraction	No twinning to report.	Xtriage
$F_o, F_c$ correlation	0.84	EDS
Total number of atoms	7614	wwPDB-VP
Average B, all atoms (Å <sup>2</sup> )	169.0	wwPDB-VP

Xtriage's analysis on translational NCS is as follows: *The largest off-origin peak in the Patterson function is 3.65% of the height of the origin peak. No significant pseudotranslation is detected.*

<sup>1</sup>Intensities estimated from amplitudes.

<sup>2</sup>Theoretical values of  $\langle |L| \rangle$ ,  $\langle L^2 \rangle$  for acentric reflections are 0.5, 0.333 respectively for untwinned datasets, and 0.375, 0.2 for perfectly twinned datasets.

## 5 Model quality [i](#)

### 5.1 Standard geometry [i](#)

Bond lengths and bond angles in the following residue types are not validated in this section: F, DMU, MHA

The Z score for a bond length (or angle) is the number of standard deviations the observed value is removed from the expected value. A bond length (or angle) with  $|Z| > 5$  is considered an outlier worth inspection. RMSZ is the root-mean-square of all Z scores of the bond lengths (or angles).

Mol	Chain	Bond lengths		Bond angles	
		RMSZ	$\# Z  > 5$	RMSZ	$\# Z  > 5$
1	A	0.25	0/3099	0.39	0/4217
1	B	0.25	0/3110	0.39	0/4231
2	C	0.23	0/701	0.45	0/965
2	D	0.23	0/687	0.44	0/944
All	All	0.24	0/7597	0.40	0/10357

There are no bond length outliers.

There are no bond angle outliers.

There are no chirality outliers.

There are no planarity outliers.

### 5.2 Too-close contacts [i](#)

In the following table, the Non-H and H(model) columns list the number of non-hydrogen atoms and hydrogen atoms in the chain respectively. The H(added) column lists the number of hydrogen atoms added and optimized by MolProbity. The Clashes column lists the number of clashes within the asymmetric unit, whereas Symm-Clashes lists symmetry related clashes.

Mol	Chain	Non-H	H(model)	H(added)	Clashes	Symm-Clashes
1	A	3019	0	3131	30	0
1	B	3030	0	3147	27	0
2	C	681	0	653	2	0
2	D	668	0	638	1	0
3	A	99	0	126	1	0
3	B	92	0	109	1	0
4	B	1	0	0	1	0
5	C	13	0	8	0	0
6	A	6	0	0	0	0

*Continued on next page...*

*Continued from previous page...*

Mol	Chain	Non-H	H(model)	H(added)	Clashes	Symm-Clashes
6	B	5	0	0	0	0
All	All	7614	0	7812	59	0

The all-atom clashscore is defined as the number of clashes found per 1000 atoms (including hydrogen atoms). The all-atom clashscore for this structure is 4.

All (59) close contacts within the same asymmetric unit are listed below, sorted by their clash magnitude.

Atom-1	Atom-2	Interatomic distance (Å)	Clash overlap (Å)
1:A:347:LEU:HD13	1:A:382:VAL:HG21	1.87	0.55
1:A:101:VAL:HA	1:A:315:LEU:HD13	1.91	0.52
1:B:280:LEU:HB3	1:B:320:THR:HG21	1.91	0.52
1:A:271:LEU:HG	2:D:80:LEU:HA	1.92	0.51
1:B:101:VAL:HA	1:B:315:LEU:HD13	1.92	0.51
1:A:119:GLY:H	1:A:317:GLY:HA3	1.76	0.51
1:A:272:LEU:HD23	1:A:301:LEU:HD13	1.93	0.51
1:B:165:THR:HG21	1:B:186:LEU:HA	1.93	0.50
1:B:290:THR:HG23	1:B:292:GLN:HG3	1.94	0.49
1:B:272:LEU:HD23	1:B:301:LEU:HD13	1.94	0.49
1:A:165:THR:HG21	1:A:186:LEU:HA	1.94	0.49
1:B:347:LEU:HD13	1:B:382:VAL:HG21	1.94	0.49
1:A:290:THR:HG23	1:A:292:GLN:HG3	1.95	0.49
1:B:119:GLY:H	1:B:317:GLY:HA3	1.78	0.48
1:B:95:LEU:HD13	1:B:131:ARG:HG3	1.95	0.48
1:B:388:PHE:HA	1:B:391:LYS:HE3	1.97	0.47
1:A:276:ARG:HH12	1:A:294:ILE:HG22	1.80	0.47
1:A:144:THR:O	1:A:148:ILE:HG12	2.16	0.46
2:C:12:VAL:HG22	2:C:22:ILE:HG22	1.98	0.46
1:A:118:GLU:HG3	1:A:317:GLY:HA3	1.98	0.46
1:B:277:TYR:O	1:B:302:LYS:NZ	2.39	0.46
1:A:280:LEU:HB3	1:A:320:THR:HG21	1.98	0.46
1:A:277:TYR:O	1:A:302:LYS:NZ	2.40	0.45
1:A:58:PRO:HD3	1:A:266:VAL:HG21	1.99	0.45
1:A:296:SER:HA	1:A:332:VAL:HG21	1.99	0.45
1:B:146:ILE:O	1:B:150:MET:HG3	2.17	0.45
1:A:95:LEU:HD13	1:A:131:ARG:HG3	1.99	0.45
3:B:501:DMU:H8	3:B:501:DMU:H5	1.56	0.45
1:A:388:PHE:HA	1:A:391:LYS:HE3	1.98	0.45
1:B:118:GLU:O	1:B:122:VAL:HG12	2.17	0.45
1:A:152:ALA:HB2	1:A:188:ALA:HB1	1.99	0.44
1:A:240:LEU:HA	1:A:307:VAL:HG13	1.99	0.44

*Continued on next page...*

*Continued from previous page...*

Atom-1	Atom-2	Interatomic distance (Å)	Clash overlap (Å)
1:A:380:VAL:HG11	1:B:162:ILE:HG23	1.99	0.44
1:B:236:PHE:HD2	1:B:303:LEU:HG	1.82	0.44
1:A:116:GLY:HA2	1:A:280:LEU:HD23	2.00	0.44
1:B:286:SER:O	1:B:290:THR:HG22	2.18	0.44
1:A:146:ILE:O	1:A:150:MET:HG3	2.18	0.43
1:B:118:GLU:HG3	1:B:317:GLY:HA3	2.00	0.43
1:A:118:GLU:HG2	1:A:319:GLY:H	1.83	0.43
1:B:84:LEU:HD22	1:B:89:GLU:HG2	2.01	0.43
1:B:144:THR:O	1:B:148:ILE:HG12	2.18	0.43
1:B:208:LEU:HD13	1:B:371:PHE:HB3	2.01	0.43
2:C:39:GLY:HA3	2:C:47:VAL:HG12	2.01	0.42
1:B:296:SER:HA	1:B:332:VAL:HG21	2.00	0.42
1:A:162:ILE:HG23	1:B:380:VAL:HG11	2.00	0.42
1:B:118:GLU:N	4:B:504:F:F	2.42	0.42
1:B:240:LEU:HA	1:B:307:VAL:HG13	2.00	0.42
1:A:274:GLN:N	1:A:274:GLN:OE1	2.52	0.42
3:A:501:DMU:H41	3:A:501:DMU:H36	1.85	0.42
1:A:286:SER:O	1:A:290:THR:HG22	2.20	0.42
1:A:354:GLY:HA3	1:A:363:PRO:HG3	2.01	0.41
1:A:206:LEU:HA	1:A:206:LEU:HD12	1.95	0.41
1:B:118:GLU:HG2	1:B:319:GLY:H	1.85	0.41
1:A:46:ARG:HD3	1:A:109:HIS:O	2.21	0.41
1:A:236:PHE:HD2	1:A:303:LEU:HG	1.86	0.41
1:B:206:LEU:HA	1:B:206:LEU:HD12	1.96	0.41
1:A:118:GLU:O	1:A:122:VAL:HG12	2.21	0.41
1:B:27:LEU:HD12	1:B:132:LEU:HD11	2.03	0.41
1:B:116:GLY:HA2	1:B:280:LEU:HD23	2.03	0.40

There are no symmetry-related clashes.

## 5.3 Torsion angles

### 5.3.1 Protein backbone

In the following table, the Percentiles column shows the percent Ramachandran outliers of the chain as a percentile score with respect to all X-ray entries followed by that with respect to entries of similar resolution.

The Analysed column shows the number of residues for which the backbone conformation was analysed, and the total number of residues.

Mol	Chain	Analysed	Favoured	Allowed	Outliers	Percentiles	
1	A	393/421 (93%)	380 (97%)	12 (3%)	1 (0%)	43	76
1	B	394/421 (94%)	380 (96%)	13 (3%)	1 (0%)	43	76
2	C	88/93 (95%)	85 (97%)	3 (3%)	0	100	100
2	D	84/93 (90%)	81 (96%)	3 (4%)	0	100	100
All	All	959/1028 (93%)	926 (97%)	31 (3%)	2 (0%)	49	81

All (2) Ramachandran outliers are listed below:

Mol	Chain	Res	Type
1	A	9	THR
1	B	9	THR

### 5.3.2 Protein sidechains ⓘ

In the following table, the Percentiles column shows the percent sidechain outliers of the chain as a percentile score with respect to all X-ray entries followed by that with respect to entries of similar resolution.

The Analysed column shows the number of residues for which the sidechain conformation was analysed, and the total number of residues.

Mol	Chain	Analysed	Rotameric	Outliers	Percentiles	
1	A	319/339 (94%)	319 (100%)	0	100	100
1	B	320/339 (94%)	320 (100%)	0	100	100
2	C	78/80 (98%)	78 (100%)	0	100	100
2	D	76/80 (95%)	76 (100%)	0	100	100
All	All	793/838 (95%)	793 (100%)	0	100	100

There are no protein residues with a non-rotameric sidechain to report.

Some sidechains can be flipped to improve hydrogen bonding and reduce clashes. There are no such sidechains identified.

### 5.3.3 RNA ⓘ

There are no RNA molecules in this entry.

## 5.4 Non-standard residues in protein, DNA, RNA chains [i](#)

There are no non-standard protein/DNA/RNA residues in this entry.

## 5.5 Carbohydrates [i](#)

There are no carbohydrates in this entry.

## 5.6 Ligand geometry [i](#)

Of 8 ligands modelled in this entry, 1 is monoatomic - leaving 7 for Mogul analysis.

In the following table, the Counts columns list the number of bonds (or angles) for which Mogul statistics could be retrieved, the number of bonds (or angles) that are observed in the model and the number of bonds (or angles) that are defined in the Chemical Component Dictionary. The Link column lists molecule types, if any, to which the group is linked. The Z score for a bond length (or angle) is the number of standard deviations the observed value is removed from the expected value. A bond length (or angle) with  $|Z| > 2$  is considered an outlier worth inspection. RMSZ is the root-mean-square of all Z scores of the bond lengths (or angles).

Mol	Type	Chain	Res	Link	Bond lengths			Bond angles		
					Counts	RMSZ	$\# Z  > 2$	Counts	RMSZ	$\# Z  > 2$
3	DMU	A	501	-	34,34,34	0.13	0	45,45,45	0.39	0
3	DMU	A	502	-	34,34,34	0.14	0	45,45,45	0.45	0
3	DMU	A	503	-	34,34,34	0.14	0	45,45,45	0.30	0
3	DMU	B	501	-	34,34,34	0.13	0	45,45,45	0.39	0
3	DMU	B	502	-	34,34,34	0.14	0	45,45,45	0.46	1 (2%)
3	DMU	B	503	-	27,27,34	0.13	0	38,38,45	0.15	0
5	MHA	C	101	-	6,12,12	0.32	0	9,15,15	1.12	1 (11%)

In the following table, the Chirals column lists the number of chiral outliers, the number of chiral centers analysed, the number of these observed in the model and the number defined in the Chemical Component Dictionary. Similar counts are reported in the Torsion and Rings columns. '-' means no outliers of that kind were identified.

Mol	Type	Chain	Res	Link	Chirals	Torsions	Rings
3	DMU	A	501	-	-	0/19/59/59	0/2/2/2
3	DMU	A	502	-	-	0/19/59/59	0/2/2/2
3	DMU	A	503	-	-	0/19/59/59	0/2/2/2
3	DMU	B	501	-	-	0/19/59/59	0/2/2/2
3	DMU	B	502	-	-	0/19/59/59	0/2/2/2
3	DMU	B	503	-	-	0/12/52/59	0/2/2/2
5	MHA	C	101	-	-	0/8/12/12	0/0/0/0

There are no bond length outliers.

All (2) bond angle outliers are listed below:

Mol	Chain	Res	Type	Atoms	Z	Observed(°)	Ideal(°)
5	C	101	MHA	C6-C5-N1	-2.94	108.89	114.00
3	B	502	DMU	C6-O5-C4	2.05	117.74	113.71

There are no chirality outliers.

There are no torsion outliers.

There are no ring outliers.

2 monomers are involved in 2 short contacts:

Mol	Chain	Res	Type	Clashes	Symm-Clashes
3	A	501	DMU	1	0
3	B	501	DMU	1	0

## 5.7 Other polymers [i](#)

There are no such residues in this entry.

## 5.8 Polymer linkage issues [i](#)

There are no chain breaks in this entry.

## 6 Fit of model and data ⓘ

### 6.1 Protein, DNA and RNA chains ⓘ

In the following table, the column labelled ‘#RSRZ > 2’ contains the number (and percentage) of RSRZ outliers, followed by percent RSRZ outliers for the chain as percentile scores relative to all X-ray entries and entries of similar resolution. The OWAB column contains the minimum, median, 95<sup>th</sup> percentile and maximum values of the occupancy-weighted average B-factor per residue. The column labelled ‘Q < 0.9’ lists the number of (and percentage) of residues with an average occupancy less than 0.9.

Mol	Chain	Analysed	<RSRZ>	#RSRZ>2	OWAB(Å <sup>2</sup> )	Q<0.9
1	A	395/421 (93%)	0.80	66 (16%) 1 1	119, 158, 203, 233	0
1	B	396/421 (94%)	0.40	30 (7%) 14 5	119, 150, 194, 236	0
2	C	90/93 (96%)	1.84	33 (36%) 0 0	153, 197, 253, 304	0
2	D	88/93 (94%)	2.27	40 (45%) 0 0	178, 225, 284, 314	0
All	All	969/1028 (94%)	0.87	169 (17%) 1 1	119, 160, 235, 314	0

All (169) RSRZ outliers are listed below:

Mol	Chain	Res	Type	RSRZ
2	D	93	THR	10.0
2	C	70	TYR	9.8
2	C	40	GLU	9.2
2	D	67	GLY	8.9
2	C	65	SER	8.8
2	D	66	PRO	8.5
2	D	68	VAL	8.4
2	D	70	TYR	7.5
1	A	23	VAL	6.7
1	B	229	PHE	6.4
1	A	24	ILE	6.3
2	D	14	ALA	6.1
2	C	68	VAL	6.0
1	B	228	ILE	5.9
1	A	19	LEU	5.8
2	D	6	VAL	5.8
2	D	7	PRO	5.8
1	B	227	LEU	5.7
2	D	75	TYR	5.7
2	C	10	LEU	5.6
2	C	39	GLY	5.5

*Continued on next page...*



*Continued from previous page...*

Mol	Chain	Res	Type	RSRZ
2	C	91	TYR	5.5
1	A	63	CYS	5.5
2	D	65	SER	5.4
1	A	21	SER	5.4
2	C	56	SER	5.3
1	A	129	ALA	5.2
1	B	231	MET	5.1
2	C	93	THR	4.9
2	D	83	TYR	4.9
2	C	72	ILE	4.8
2	C	58	THR	4.8
1	A	132	LEU	4.7
2	D	50	PHE	4.7
1	A	22	LEU	4.6
1	A	60	ILE	4.6
2	D	34	TYR	4.4
2	C	7	PRO	4.4
2	C	89	ILE	4.4
1	A	260	ILE	4.4
1	A	128	ILE	4.3
1	A	320	THR	4.3
2	D	69	ASP	4.3
1	A	383	CYS	4.2
1	A	62	ILE	4.1
1	A	26	VAL	4.1
1	A	91	LYS	4.1
2	D	12	VAL	4.1
2	C	52	VAL	4.1
2	D	54	GLY	4.1
2	D	76	ALA	4.1
1	A	363	PRO	4.0
1	A	361	PHE	4.0
2	D	91	TYR	4.0
1	B	336	LEU	3.9
2	D	84	MET	3.9
1	A	27	LEU	3.8
2	D	49	GLU	3.8
2	D	90	ASN	3.8
1	A	224	VAL	3.8
2	D	74	VAL	3.8
1	A	18	GLY	3.7
1	A	145	LEU	3.7

*Continued on next page...*

*Continued from previous page...*

Mol	Chain	Res	Type	RSRZ
2	C	71	THR	3.7
1	A	59	ILE	3.6
2	C	66	PRO	3.6
1	A	255	LEU	3.6
2	D	36	ILE	3.6
2	D	35	ARG	3.6
1	B	23	VAL	3.5
2	C	53	PRO	3.5
1	A	107	LEU	3.5
2	D	21	LEU	3.4
1	B	337	PHE	3.4
1	A	20	LEU	3.3
2	C	55	SER	3.3
1	A	265	LEU	3.2
1	B	361	PHE	3.2
1	A	318	GLU	3.2
1	A	359	THR	3.2
1	A	384	SER	3.2
1	B	53	LEU	3.1
1	A	387	TYR	3.1
1	B	338	GLY	3.1
1	A	184	PRO	3.0
2	D	53	PRO	3.0
2	C	24	TRP	3.0
1	B	15	THR	3.0
1	A	282	THR	3.0
2	D	31	VAL	3.0
1	B	225	ILE	3.0
2	C	64	LEU	3.0
1	B	320	THR	2.9
2	C	18	THR	2.9
1	A	319	GLY	2.8
2	C	57	SER	2.7
1	A	354	GLY	2.7
2	D	82	TRP	2.7
1	B	359	THR	2.7
1	A	360	LEU	2.7
1	A	116	GLY	2.7
1	B	56	PHE	2.7
1	B	138	LEU	2.6
1	B	19	LEU	2.6
1	A	333	LEU	2.6

*Continued on next page...*

*Continued from previous page...*

Mol	Chain	Res	Type	RSRZ
2	C	34	TYR	2.6
1	A	15	THR	2.6
1	A	365	PHE	2.6
2	D	60	THR	2.6
1	A	117	ARG	2.6
2	D	86	PRO	2.6
1	A	152	ALA	2.5
1	A	170	GLU	2.5
2	D	10	LEU	2.5
1	A	228	ILE	2.5
1	A	337	PHE	2.5
1	A	392	PRO	2.5
1	A	119	GLY	2.5
1	B	119	GLY	2.5
1	A	118	GLU	2.5
1	A	362	ALA	2.5
1	A	56	PHE	2.5
1	B	363	PRO	2.5
1	A	394	SER	2.5
2	C	19	SER	2.5
1	A	125	GLY	2.5
1	A	25	GLY	2.4
1	B	224	VAL	2.4
1	A	187	LEU	2.4
1	B	211	SER	2.4
1	B	333	LEU	2.4
2	C	41	THR	2.4
2	D	8	THR	2.4
2	C	90	ASN	2.4
2	D	77	HIS	2.4
1	A	316	GLY	2.4
2	C	69	ASP	2.3
1	A	51	LEU	2.3
2	C	38	TYR	2.3
2	C	13	VAL	2.3
1	A	281	GLY	2.3
1	B	319	GLY	2.3
1	A	111	PHE	2.3
1	B	52	PRO	2.3
2	C	42	GLY	2.2
2	D	20	LEU	2.2
2	D	55	SER	2.2

*Continued on next page...*

*Continued from previous page...*

Mol	Chain	Res	Type	RSRZ
2	D	9	LYS	2.2
1	B	132	LEU	2.2
2	D	56	SER	2.2
1	A	34	PHE	2.2
1	B	362	ALA	2.2
1	A	12	PHE	2.2
2	D	17	PRO	2.2
1	A	148	ILE	2.2
2	C	87	ILE	2.2
1	B	360	LEU	2.1
1	A	397	PRO	2.1
2	C	51	THR	2.1
1	B	89	GLU	2.1
2	C	20	LEU	2.1
1	A	390	SER	2.1
2	D	81	GLN	2.1
1	A	256	TRP	2.0
1	A	30	ALA	2.0
1	A	92	ASP	2.0
1	B	16	ALA	2.0
1	B	163	ALA	2.0
2	D	61	ILE	2.0

## 6.2 Non-standard residues in protein, DNA, RNA chains [i](#)

There are no non-standard protein/DNA/RNA residues in this entry.

## 6.3 Carbohydrates [i](#)

There are no carbohydrates in this entry.

## 6.4 Ligands [i](#)

In the following table, the Atoms column lists the number of modelled atoms in the group and the number defined in the chemical component dictionary. The B-factors column lists the minimum, median, 95<sup>th</sup> percentile and maximum values of B factors of atoms in the group. The column labelled 'Q< 0.9' lists the number of atoms with occupancy less than 0.9.

Mol	Type	Chain	Res	Atoms	RSCC	RSR	B-factors(Å <sup>2</sup> )	Q<0.9
3	DMU	A	501	33/33	0.69	0.31	136,226,240,245	0

*Continued on next page...*

*Continued from previous page...*

Mol	Type	Chain	Res	Atoms	RSCC	RSR	B-factors( $\text{\AA}^2$ )	Q<0.9
5	MHA	C	101	13/13	0.73	0.38	196,228,235,245	0
3	DMU	A	503	33/33	0.74	0.27	130,266,276,283	0
3	DMU	B	501	33/33	0.83	0.35	135,174,197,198	0
3	DMU	A	502	33/33	0.87	0.35	125,195,213,236	0
3	DMU	B	503	26/33	0.88	0.14	179,240,270,274	0
3	DMU	B	502	33/33	0.90	0.18	152,176,198,201	0
4	F	B	504	1/1	0.93	0.78	137,137,137,137	0

## 6.5 Other polymers [i](#)

There are no such residues in this entry.