



wwPDB X-ray Structure Validation Summary Report ⓘ

Mar 8, 2018 – 11:35 pm GMT

PDB ID : 3D4L
Title : Human dipeptidyl peptidase IV/CD26 in complex with a novel inhibitor
Authors : Scapin, G.
Deposited on : 2008-05-14
Resolution : 2.00 Å(reported)

This is a wwPDB X-ray Structure Validation Summary Report for a publicly released PDB entry.

We welcome your comments at validation@mail.wwpdb.org

A user guide is available at

<https://www.wwpdb.org/validation/2017/XrayValidationReportHelp>

with specific help available everywhere you see the ⓘ symbol.

The following versions of software and data (see [references ⓘ](#)) were used in the production of this report:

MolProbity : 4.02b-467
Mogul : 1.7.3 (157068), CSD as539be (2018)
Xtriage (Phenix) : 1.13
EDS : trunk30967
Percentile statistics : 20171227.v01 (using entries in the PDB archive December 27th 2017)
Refmac : 5.8.0158
CCP4 : 7.0 (Gargrove)
Ideal geometry (proteins) : Engh & Huber (2001)
Ideal geometry (DNA, RNA) : Parkinson et al. (1996)
Validation Pipeline (wwPDB-VP) : trunk30967

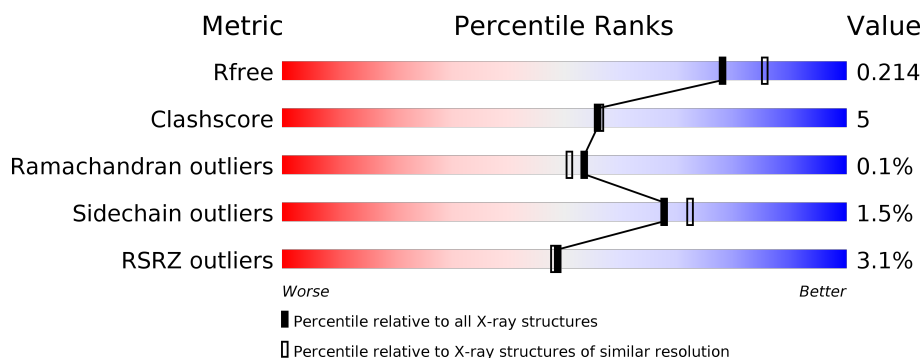
1 Overall quality at a glance

The following experimental techniques were used to determine the structure:

X-RAY DIFFRACTION

The reported resolution of this entry is 2.00 Å.

Percentile scores (ranging between 0-100) for global validation metrics of the entry are shown in the following graphic. The table shows the number of entries on which the scores are based.



Metric	Whole archive (#Entries)	Similar resolution (#Entries, resolution range(Å))
R_{free}	111664	7193 (2.00-2.00)
Clashscore	122126	8267 (2.00-2.00)
Ramachandran outliers	120053	8166 (2.00-2.00)
Sidechain outliers	120020	8165 (2.00-2.00)
RSRZ outliers	108989	7011 (2.00-2.00)

The table below summarises the geometric issues observed across the polymeric chains and their fit to the electron density. The red, orange, yellow and green segments on the lower bar indicate the fraction of residues that contain outliers for ≥ 3 , 2, 1 and 0 types of geometric quality criteria. A grey segment represents the fraction of residues that are not modelled. The numeric value for each fraction is indicated below the corresponding segment, with a dot representing fractions $\leq 5\%$. The upper red bar (where present) indicates the fraction of residues that have poor fit to the electron density. The numeric value is given above the bar.

Mol	Chain	Length	Quality of chain
1	A	728	<div> <div>2%</div> <div> <div></div> <div>87%</div> <div>12%</div> </div> </div>
1	B	728	<div> <div>4%</div> <div> <div></div> <div>87%</div> <div>13%</div> </div> </div>

The following table lists non-polymeric compounds, carbohydrate monomers and non-standard residues in protein, DNA, RNA chains that are outliers for geometric or electron-density-fit criteria:

Mol	Type	Chain	Res	Chirality	Geometry	Clashes	Electron density
2	NAG	A	1092	-	-	-	X
2	NAG	A	1322	-	-	-	X
2	NAG	A	1520	-	-	-	X
2	NAG	B	2086	-	-	-	X
2	NAG	B	2092	-	-	-	X
2	NAG	B	2150	-	-	-	X
3	NDG	A	1150	-	-	-	X

2 Entry composition [i](#)

There are 6 unique types of molecules in this entry. The entry contains 13340 atoms, of which 0 are hydrogens and 0 are deuteriums.

In the tables below, the ZeroOcc column contains the number of atoms modelled with zero occupancy, the AltConf column contains the number of residues with at least one atom in alternate conformation and the Trace column contains the number of residues modelled with at most 2 atoms.

- Molecule 1 is a protein called Dipeptidyl peptidase 4 soluble form.

Mol	Chain	Residues	Atoms					ZeroOcc	AltConf	Trace
1	A	728	Total	C	N	O	S	0	3	0
			5987	3840	987	1134	26			
1	B	728	Total	C	N	O	S	0	2	0
			5982	3839	986	1131	26			

There are 2 discrepancies between the modelled and reference sequences:

Chain	Residue	Modelled	Actual	Comment	Reference
A	39	THR	SER	ENGINEERED	UNP P27487
B	39	THR	SER	ENGINEERED	UNP P27487

- Molecule 2 is N-ACETYL-D-GLUCOSAMINE (three-letter code: NAG) (formula: $C_8H_{15}NO_6$).



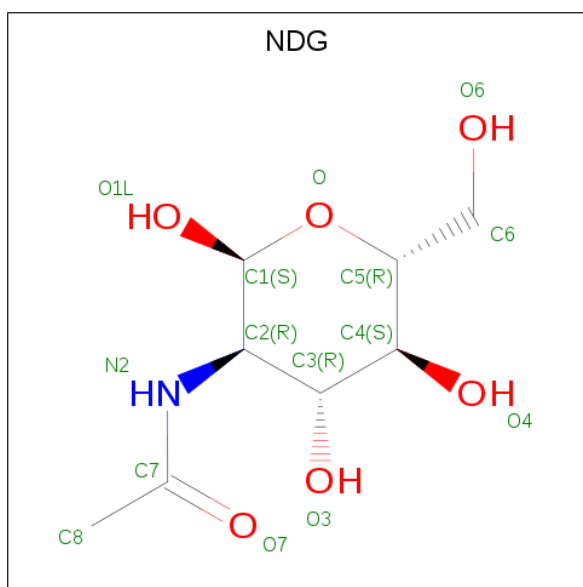
Mol	Chain	Residues	Atoms				ZeroOcc	AltConf
2	A	1	Total	C	N	O	0	0
			14	8	1	5		

Continued on next page...

Continued from previous page...

Mol	Chain	Residues	Atoms				ZeroOcc	AltConf
2	A	1	Total	C	N	O	0	0
			14	8	1	5		
2	A	1	Total	C	N	O	0	0
			14	8	1	5		
2	A	1	Total	C	N	O	0	0
			14	8	1	5		
2	A	1	Total	C	N	O	0	0
			14	8	1	5		
2	A	1	Total	C	N	O	0	0
			14	8	1	5		
2	A	1	Total	C	N	O	0	0
			14	8	1	5		
2	A	1	Total	C	N	O	0	0
			14	8	1	5		
2	B	1	Total	C	N	O	0	0
			14	8	1	5		
2	B	1	Total	C	N	O	0	0
			14	8	1	5		
2	B	1	Total	C	N	O	0	0
			14	8	1	5		
2	B	1	Total	C	N	O	0	0
			14	8	1	5		
2	B	1	Total	C	N	O	0	0
			14	8	1	5		
2	B	1	Total	C	N	O	0	0
			14	8	1	5		
2	B	1	Total	C	N	O	0	0
			14	8	1	5		
2	B	1	Total	C	N	O	0	0
			14	8	1	5		
2	B	1	Total	C	N	O	0	0
			14	8	1	5		

- Molecule 3 is 2-(ACETYLAMINO)-2-DEOXY-A-D-GLUCOPYRANOSE (three-letter code: NDG) (formula: C₈H₁₅NO₆).

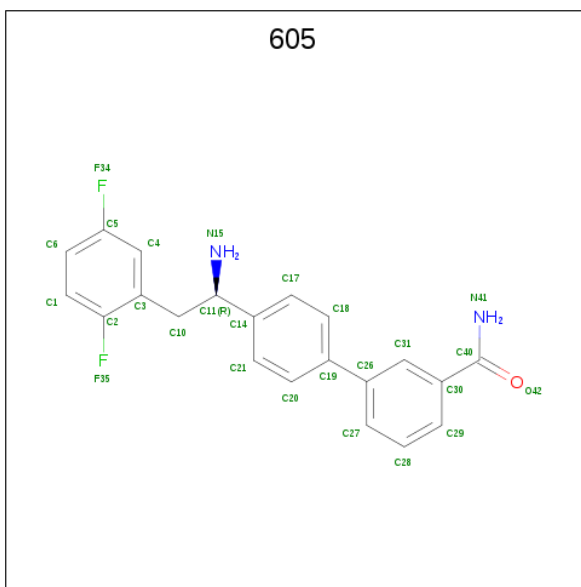


Mol	Chain	Residues	Atoms				ZeroOcc	AltConf
3	A	1	Total	C	N	O	0	0
			14	8	1	5		
3	A	1	Total	C	N	O	0	0
			14	8	1	5		
3	A	1	Total	C	N	O	0	0
			14	8	1	5		

- Molecule 4 is SODIUM ION (three-letter code: NA) (formula: Na).

Mol	Chain	Residues	Atoms		ZeroOcc	AltConf
4	A	1	Total	Na	0	0
			1	1		

- Molecule 5 is 4'-[(1R)-1-amino-2-(2,5-difluorophenyl)ethyl]biphenyl-3-carboxamide (three-letter code: 605) (formula: C₂₁H₁₈F₂N₂O).



Mol	Chain	Residues	Atoms					ZeroOcc	AltConf
5	A	1	Total	C	F	N	O	0	0
			26	21	2	2	1		
5	B	1	Total	C	F	N	O	0	0
			26	21	2	2	1		

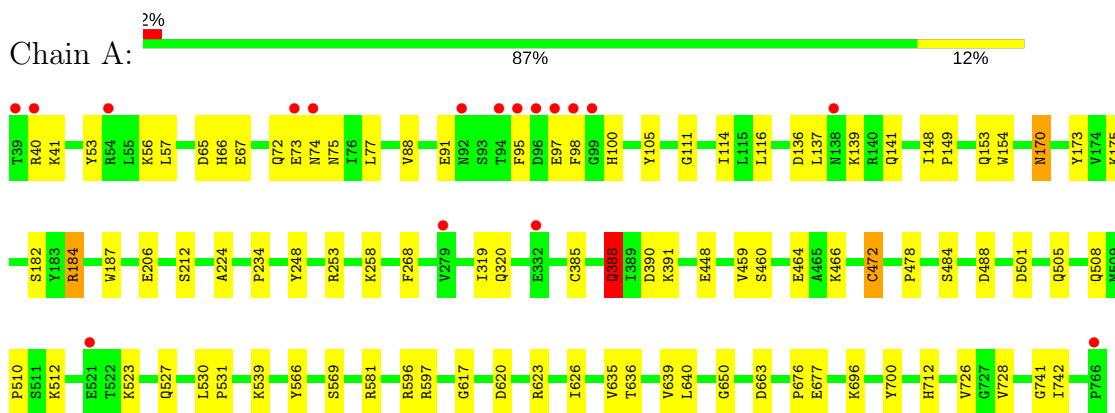
- Molecule 6 is water.

Mol	Chain	Residues	Atoms		ZeroOcc	AltConf
6	A	500	Total	O	0	0
			500	500		
6	B	482	Total	O	0	0
			482	482		

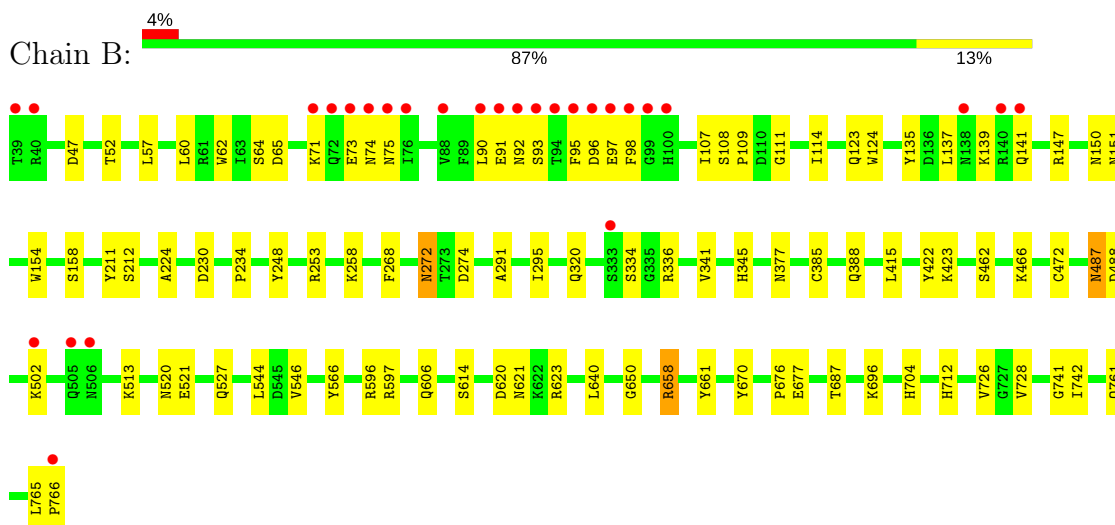
3 Residue-property plots [i](#)

These plots are drawn for all protein, RNA and DNA chains in the entry. The first graphic for a chain summarises the proportions of the various outlier classes displayed in the second graphic. The second graphic shows the sequence view annotated by issues in geometry and electron density. Residues are color-coded according to the number of geometric quality criteria for which they contain at least one outlier: green = 0, yellow = 1, orange = 2 and red = 3 or more. A red dot above a residue indicates a poor fit to the electron density ($RSRZ > 2$). Stretches of 2 or more consecutive residues without any outlier are shown as a green connector. Residues present in the sample, but not in the model, are shown in grey.

- Molecule 1: Dipeptidyl peptidase 4 soluble form



- Molecule 1: Dipeptidyl peptidase 4 soluble form



4 Data and refinement statistics

Property	Value	Source
Space group	P 21 21 21	Depositor
Cell constants a, b, c, α , β , γ	118.44Å 125.75Å 137.18Å 90.00° 90.00° 90.00°	Depositor
Resolution (Å)	30.00 – 2.00 46.35 – 2.00	Depositor EDS
% Data completeness (in resolution range)	98.8 (30.00-2.00) 98.5 (46.35-2.00)	Depositor EDS
R_{merge}	0.08	Depositor
R_{sym}	(Not available)	Depositor
$\langle I/\sigma(I) \rangle$ ¹	2.96 (at 2.00Å)	Xtriage
Refinement program	CNX	Depositor
R, R_{free}	0.192 , 0.217 0.190 , 0.214	Depositor DCC
R_{free} test set	6944 reflections (5.08%)	wwPDB-VP
Wilson B-factor (Å ²)	30.8	Xtriage
Anisotropy	0.396	Xtriage
Bulk solvent k_{sol} (e/Å ³), B_{sol} (Å ²)	0.37 , 49.6	EDS
L-test for twinning ²	$\langle L \rangle = 0.50$, $\langle L^2 \rangle = 0.34$	Xtriage
Estimated twinning fraction	No twinning to report.	Xtriage
F_o, F_c correlation	0.96	EDS
Total number of atoms	13340	wwPDB-VP
Average B, all atoms (Å ²)	32.0	wwPDB-VP

Xtriage's analysis on translational NCS is as follows: *The largest off-origin peak in the Patterson function is 2.77% of the height of the origin peak. No significant pseudotranslation is detected.*

¹Intensities estimated from amplitudes.

²Theoretical values of $\langle |L| \rangle$, $\langle L^2 \rangle$ for acentric reflections are 0.5, 0.333 respectively for untwinned datasets, and 0.375, 0.2 for perfectly twinned datasets.

5 Model quality

5.1 Standard geometry

Bond lengths and bond angles in the following residue types are not validated in this section: 605, NA, NAG, NDG

The Z score for a bond length (or angle) is the number of standard deviations the observed value is removed from the expected value. A bond length (or angle) with $|Z| > 5$ is considered an outlier worth inspection. RMSZ is the root-mean-square of all Z scores of the bond lengths (or angles).

Mol	Chain	Bond lengths		Bond angles	
		RMSZ	# Z >5	RMSZ	# Z >5
1	A	0.50	0/6162	0.69	2/8380 (0.0%)
1	B	0.48	0/6155	0.68	1/8371 (0.0%)
All	All	0.49	0/12317	0.69	3/16751 (0.0%)

Chiral center outliers are detected by calculating the chiral volume of a chiral center and verifying if the center is modelled as a planar moiety or with the opposite hand. A planarity outlier is detected by checking planarity of atoms in a peptide group, atoms in a mainchain group or atoms of a sidechain that are expected to be planar.

Mol	Chain	#Chirality outliers	#Planarity outliers
1	A	0	1
1	B	0	1
All	All	0	2

There are no bond length outliers.

All (3) bond angle outliers are listed below:

Mol	Chain	Res	Type	Atoms	Z	Observed(°)	Ideal(°)
1	A	388	GLN	N-CA-C	-5.37	96.51	111.00
1	A	319	ILE	N-CA-C	-5.27	96.77	111.00
1	B	388	GLN	N-CA-C	-5.10	97.23	111.00

There are no chirality outliers.

All (2) planarity outliers are listed below:

Mol	Chain	Res	Type	Group
1	A	700	TYR	Sidechain
1	B	211	TYR	Sidechain

5.2 Too-close contacts [i](#)

In the following table, the Non-H and H(model) columns list the number of non-hydrogen atoms and hydrogen atoms in the chain respectively. The H(added) column lists the number of hydrogen atoms added and optimized by MolProbity. The Clashes column lists the number of clashes within the asymmetric unit, whereas Symm-Clashes lists symmetry related clashes.

Mol	Chain	Non-H	H(model)	H(added)	Clashes	Symm-Clashes
1	A	5987	0	5690	64	0
1	B	5982	0	5693	67	0
2	A	140	0	126	8	0
2	B	154	0	139	1	0
3	A	42	0	38	4	0
4	A	1	0	0	0	0
5	A	26	0	18	0	0
5	B	26	0	18	0	0
6	A	500	0	0	1	0
6	B	482	0	0	7	0
All	All	13340	0	11722	132	0

The all-atom clashscore is defined as the number of clashes found per 1000 atoms (including hydrogen atoms). The all-atom clashscore for this structure is 5.

The worst 5 of 132 close contacts within the same asymmetric unit are listed below, sorted by their clash magnitude.

Atom-1	Atom-2	Interatomic distance (Å)	Clash overlap (Å)
1:A:253:ARG:HH21	1:B:253:ARG:HH21	1.21	0.85
1:A:581:ARG:CZ	2:A:1520:NAG:H62	2.07	0.83
1:A:75:ASN:HD21	2:A:1092:NAG:HN2	1.23	0.82
1:A:66[B]:HIS:CA	1:A:67:GLU:N	2.45	0.80
1:B:147:ARG:HE	2:B:2150:NAG:H83	1.46	0.79

There are no symmetry-related clashes.

5.3 Torsion angles [i](#)

5.3.1 Protein backbone [i](#)

In the following table, the Percentiles column shows the percent Ramachandran outliers of the chain as a percentile score with respect to all X-ray entries followed by that with respect to entries of similar resolution.

The Analysed column shows the number of residues for which the backbone conformation was

analysed, and the total number of residues.

Mol	Chain	Analysed	Favoured	Allowed	Outliers	Percentiles	
1	A	729/728 (100%)	705 (97%)	23 (3%)	1 (0%)	53	51
1	B	728/728 (100%)	700 (96%)	27 (4%)	1 (0%)	53	51
All	All	1457/1456 (100%)	1405 (96%)	50 (3%)	2 (0%)	53	51

All (2) Ramachandran outliers are listed below:

Mol	Chain	Res	Type
1	A	320	GLN
1	B	320	GLN

5.3.2 Protein sidechains ⓘ

In the following table, the Percentiles column shows the percent sidechain outliers of the chain as a percentile score with respect to all X-ray entries followed by that with respect to entries of similar resolution.

The Analysed column shows the number of residues for which the sidechain conformation was analysed, and the total number of residues.

Mol	Chain	Analysed	Rotameric	Outliers	Percentiles	
1	A	656/653 (100%)	648 (99%)	8 (1%)	74	78
1	B	655/653 (100%)	644 (98%)	11 (2%)	63	68
All	All	1311/1306 (100%)	1292 (99%)	19 (1%)	67	74

5 of 19 residues with a non-rotameric sidechain are listed below:

Mol	Chain	Res	Type
1	B	57	LEU
1	B	230	ASP
1	B	566	TYR
1	A	566	TYR
1	B	658	ARG

Some sidechains can be flipped to improve hydrogen bonding and reduce clashes. 5 of 20 such sidechains are listed below:

Mol	Chain	Res	Type
1	B	51	ASN
1	B	138	ASN

Continued on next page...

Continued from previous page...

Mol	Chain	Res	Type
1	B	572	ASN
1	A	572	ASN
1	A	712	HIS

5.3.3 RNA ⓘ

There are no RNA molecules in this entry.

5.4 Non-standard residues in protein, DNA, RNA chains ⓘ

There are no non-standard protein/DNA/RNA residues in this entry.

5.5 Carbohydrates ⓘ

There are no carbohydrates in this entry.

5.6 Ligand geometry ⓘ

Of 27 ligands modelled in this entry, 1 is monoatomic - leaving 26 for Mogul analysis.

In the following table, the Counts columns list the number of bonds (or angles) for which Mogul statistics could be retrieved, the number of bonds (or angles) that are observed in the model and the number of bonds (or angles) that are defined in the Chemical Component Dictionary. The Link column lists molecule types, if any, to which the group is linked. The Z score for a bond length (or angle) is the number of standard deviations the observed value is removed from the expected value. A bond length (or angle) with $|Z| > 2$ is considered an outlier worth inspection. RMSZ is the root-mean-square of all Z scores of the bond lengths (or angles).

Mol	Type	Chain	Res	Link	Bond lengths			Bond angles		
					Counts	RMSZ	$\# Z > 2$	Counts	RMSZ	$\# Z > 2$
2	NAG	A	1085	1,3	14,14,15	0.72	0	17,19,21	1.20	1 (5%)
3	NDG	A	1086	2	14,14,15	0.74	0	17,19,21	0.81	1 (5%)
2	NAG	A	1092	1	14,14,15	0.72	0	17,19,21	0.57	0
3	NDG	A	1150	1,2	14,14,15	0.74	1 (7%)	17,19,21	0.70	0
2	NAG	A	1151	3	14,14,15	0.83	1 (7%)	17,19,21	0.69	0
2	NAG	A	1219	1,2	14,14,15	0.56	0	17,19,21	0.70	1 (5%)
2	NAG	A	1220	2	14,14,15	0.60	0	17,19,21	0.73	0
2	NAG	A	1229	1,3	14,14,15	0.61	0	17,19,21	0.77	1 (5%)
3	NDG	A	1230	2	14,14,15	0.97	1 (7%)	17,19,21	1.05	1 (5%)

Mol	Type	Chain	Res	Link	Bond lengths			Bond angles		
					Counts	RMSZ	# Z > 2	Counts	RMSZ	# Z > 2
2	NAG	A	1281	1	14,14,15	0.72	0	17,19,21	0.85	1 (5%)
2	NAG	A	1321	1,2	14,14,15	0.66	0	17,19,21	1.03	1 (5%)
2	NAG	A	1322	2	14,14,15	0.61	0	17,19,21	0.72	0
2	NAG	A	1520	1	14,14,15	0.80	0	17,19,21	0.75	0
5	605	A	1521	-	27,28,28	3.63	20 (74%)	35,39,39	1.21	5 (14%)
5	605	B	1521	-	27,28,28	3.71	20 (74%)	35,39,39	1.19	5 (14%)
2	NAG	B	2085	1,2	14,14,15	0.64	0	17,19,21	0.71	0
2	NAG	B	2086	2	14,14,15	0.93	1 (7%)	17,19,21	1.18	1 (5%)
2	NAG	B	2092	1	14,14,15	0.79	1 (7%)	17,19,21	0.68	0
2	NAG	B	2150	1	14,14,15	0.56	0	17,19,21	0.73	1 (5%)
2	NAG	B	2219	1,2	14,14,15	0.52	0	17,19,21	0.72	0
2	NAG	B	2220	2	14,14,15	0.56	0	17,19,21	0.67	0
2	NAG	B	2229	1,2	14,14,15	0.55	0	17,19,21	0.89	0
2	NAG	B	2230	2	14,14,15	0.58	0	17,19,21	0.72	0
2	NAG	B	2281	1,2	14,14,15	0.41	0	17,19,21	0.89	1 (5%)
2	NAG	B	2282	2	14,14,15	0.58	0	17,19,21	0.74	1 (5%)
2	NAG	B	2321	1	14,14,15	0.52	0	17,19,21	0.97	1 (5%)

In the following table, the Chirals column lists the number of chiral outliers, the number of chiral centers analysed, the number of these observed in the model and the number defined in the Chemical Component Dictionary. Similar counts are reported in the Torsion and Rings columns. '-' means no outliers of that kind were identified.

Mol	Type	Chain	Res	Link	Chirals	Torsions	Rings
2	NAG	A	1085	1,3	-	0/6/23/26	0/1/1/1
3	NDG	A	1086	2	-	0/6/23/26	0/1/1/1
2	NAG	A	1092	1	-	0/6/23/26	0/1/1/1
3	NDG	A	1150	1,2	-	0/6/23/26	0/1/1/1
2	NAG	A	1151	3	-	0/6/23/26	0/1/1/1
2	NAG	A	1219	1,2	-	0/6/23/26	0/1/1/1
2	NAG	A	1220	2	-	0/6/23/26	0/1/1/1
2	NAG	A	1229	1,3	-	0/6/23/26	0/1/1/1
3	NDG	A	1230	2	-	0/6/23/26	0/1/1/1
2	NAG	A	1281	1	-	0/6/23/26	0/1/1/1
2	NAG	A	1321	1,2	-	0/6/23/26	0/1/1/1
2	NAG	A	1322	2	-	0/6/23/26	0/1/1/1
2	NAG	A	1520	1	-	0/6/23/26	0/1/1/1
5	605	A	1521	-	-	0/16/16/16	0/3/3/3
5	605	B	1521	-	-	0/16/16/16	0/3/3/3
2	NAG	B	2085	1,2	-	0/6/23/26	0/1/1/1

Continued on next page...

Continued from previous page...

Mol	Type	Chain	Res	Link	Chirals	Torsions	Rings
2	NAG	B	2086	2	-	0/6/23/26	0/1/1/1
2	NAG	B	2092	1	-	0/6/23/26	0/1/1/1
2	NAG	B	2150	1	-	0/6/23/26	0/1/1/1
2	NAG	B	2219	1,2	-	0/6/23/26	0/1/1/1
2	NAG	B	2220	2	-	0/6/23/26	0/1/1/1
2	NAG	B	2229	1,2	-	0/6/23/26	0/1/1/1
2	NAG	B	2230	2	-	0/6/23/26	0/1/1/1
2	NAG	B	2281	1,2	-	0/6/23/26	0/1/1/1
2	NAG	B	2282	2	-	0/6/23/26	0/1/1/1
2	NAG	B	2321	1	-	0/6/23/26	0/1/1/1

The worst 5 of 45 bond length outliers are listed below:

Mol	Chain	Res	Type	Atoms	Z	Observed(Å)	Ideal(Å)
5	B	1521	605	F34-C5	-2.72	1.29	1.36
5	A	1521	605	F34-C5	-2.68	1.30	1.36
5	A	1521	605	C14-C11	-2.60	1.48	1.51
5	B	1521	605	F35-C2	-2.56	1.29	1.35
5	A	1521	605	F35-C2	-2.38	1.29	1.35

The worst 5 of 22 bond angle outliers are listed below:

Mol	Chain	Res	Type	Atoms	Z	Observed(°)	Ideal(°)
2	A	1085	NAG	C4-C3-C2	-3.20	106.33	111.02
5	B	1521	605	O42-C40-N41	-2.54	118.90	122.60
2	B	2281	NAG	C2-N2-C7	-2.50	119.30	122.94
5	A	1521	605	C31-C26-C19	-2.43	116.72	120.87
5	B	1521	605	C31-C26-C19	-2.38	116.80	120.87

There are no chirality outliers.

There are no torsion outliers.

There are no ring outliers.

10 monomers are involved in 11 short contacts:

Mol	Chain	Res	Type	Clashes	Symm-Clashes
2	A	1085	NAG	1	0
3	A	1086	NDG	1	0
2	A	1092	NAG	2	0
3	A	1150	NDG	2	0
2	A	1151	NAG	1	0
3	A	1230	NDG	1	0

Continued on next page...

Continued from previous page...

Mol	Chain	Res	Type	Clashes	Symm-Clashes
2	A	1321	NAG	1	0
2	A	1322	NAG	1	0
2	A	1520	NAG	3	0
2	B	2150	NAG	1	0

5.7 Other polymers [i](#)

There are no such residues in this entry.

5.8 Polymer linkage issues [i](#)

There are no chain breaks in this entry.

6 Fit of model and data [i](#)

6.1 Protein, DNA and RNA chains [i](#)

In the following table, the column labelled ‘#RSRZ > 2’ contains the number (and percentage) of RSRZ outliers, followed by percent RSRZ outliers for the chain as percentile scores relative to all X-ray entries and entries of similar resolution. The OWAB column contains the minimum, median, 95th percentile and maximum values of the occupancy-weighted average B-factor per residue. The column labelled ‘Q < 0.9’ lists the number of (and percentage) of residues with an average occupancy less than 0.9.

Mol	Chain	Analysed	<RSRZ>	#RSRZ>2	OWAB(Å ²)	Q<0.9
1	A	728/728 (100%)	0.00	17 (2%) 60 59	21, 29, 48, 59	0
1	B	728/728 (100%)	0.02	28 (3%) 40 40	21, 31, 49, 59	0
All	All	1456/1456 (100%)	0.01	45 (3%) 49 48	21, 30, 49, 59	0

The worst 5 of 45 RSRZ outliers are listed below:

Mol	Chain	Res	Type	RSRZ
1	A	39	THR	7.3
1	B	39	THR	7.1
1	B	766	PRO	5.6
1	A	766	PRO	5.5
1	B	95	PHE	5.1

6.2 Non-standard residues in protein, DNA, RNA chains [i](#)

There are no non-standard protein/DNA/RNA residues in this entry.

6.3 Carbohydrates [i](#)

There are no carbohydrates in this entry.

6.4 Ligands [i](#)

In the following table, the Atoms column lists the number of modelled atoms in the group and the number defined in the chemical component dictionary. The B-factors column lists the minimum, median, 95th percentile and maximum values of B factors of atoms in the group. The column labelled ‘Q < 0.9’ lists the number of atoms with occupancy less than 0.9.

Mol	Type	Chain	Res	Atoms	RSCC	RSR	B-factors(\AA^2)	Q<0.9
3	NDG	A	1086	14/15	0.51	0.38	58,60,61,61	0
2	NAG	A	1520	14/15	0.53	0.42	59,60,60,60	0
2	NAG	A	1322	14/15	0.55	0.42	56,58,60,60	0
3	NDG	A	1150	14/15	0.59	0.41	55,58,60,61	0
2	NAG	A	1151	14/15	0.61	0.40	59,61,62,63	0
2	NAG	B	2086	14/15	0.61	0.51	59,60,61,61	0
2	NAG	A	1092	14/15	0.62	0.54	61,62,62,62	0
2	NAG	B	2282	14/15	0.64	0.25	50,52,54,54	0
2	NAG	B	2092	14/15	0.68	0.43	60,60,61,62	0
3	NDG	A	1230	14/15	0.76	0.37	53,56,58,59	0
2	NAG	B	2150	14/15	0.77	0.41	53,55,57,57	0
2	NAG	B	2085	14/15	0.78	0.21	50,53,55,57	0
2	NAG	A	1220	14/15	0.80	0.26	52,54,57,57	0
2	NAG	A	1085	14/15	0.81	0.16	46,50,53,56	0
2	NAG	B	2321	14/15	0.82	0.28	42,46,48,49	0
2	NAG	A	1321	14/15	0.82	0.29	43,48,49,54	0
2	NAG	B	2230	14/15	0.83	0.28	48,51,52,53	0
2	NAG	A	1281	14/15	0.86	0.18	47,49,50,51	0
2	NAG	B	2220	14/15	0.88	0.17	48,49,51,51	0
2	NAG	B	2281	14/15	0.91	0.12	40,41,46,48	0
2	NAG	A	1219	14/15	0.92	0.15	44,47,49,49	0
2	NAG	B	2229	14/15	0.92	0.12	33,35,40,45	0
2	NAG	A	1229	14/15	0.92	0.15	39,43,47,49	0
2	NAG	B	2219	14/15	0.93	0.11	41,44,46,46	0
5	605	B	1521	26/26	0.95	0.19	21,26,32,35	0
5	605	A	1521	26/26	0.97	0.18	17,22,29,32	0
4	NA	A	1	1/1	0.97	0.06	35,35,35,35	0

6.5 Other polymers ⓘ

There are no such residues in this entry.