



wwPDB X-ray Structure Validation Summary Report ⓘ

Jul 19, 2019 – 02:22 PM EDT

PDB ID : 3D4Y
Title : GOLGI MANNOSIDASE II complex with mannoimidazole
Authors : Kuntz, D.A.; Tarling, C.A.; Withers, S.G.; Rose, D.R.
Deposited on : 2008-05-15
Resolution : 1.52 Å(reported)

This is a wwPDB X-ray Structure Validation Summary Report for a publicly released PDB entry.

We welcome your comments at validation@mail.wwpdb.org

A user guide is available at

<https://www.wwpdb.org/validation/2017/XrayValidationReportHelp>

with specific help available everywhere you see the ⓘ symbol.

The following versions of software and data (see [references ⓘ](#)) were used in the production of this report:

MolProbity : 4.02b-467
Mogul : 1.8.0 (224370), CSD as540be (2019)
Xtriage (Phenix) : 1.13
EDS : 2.3.2
Percentile statistics : 20171227.v01 (using entries in the PDB archive December 27th 2017)
Refmac : 5.8.0158
CCP4 : 7.0 (Gargrove)
Ideal geometry (proteins) : Engh & Huber (2001)
Ideal geometry (DNA, RNA) : Parkinson et al. (1996)
Validation Pipeline (wwPDB-VP) : 2.3.2

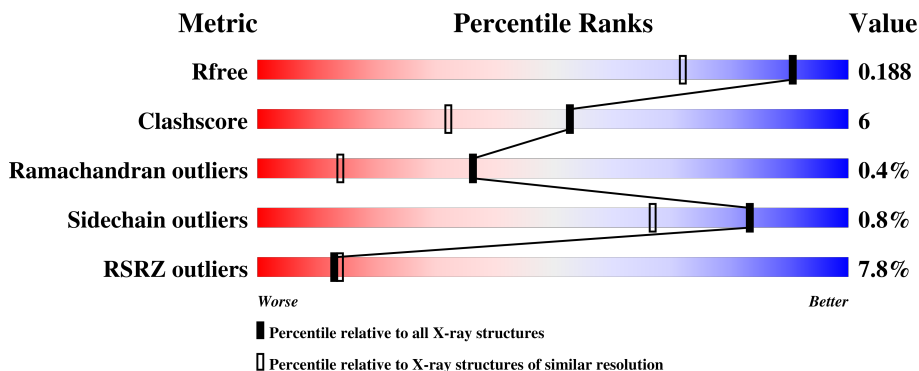
1 Overall quality at a glance

The following experimental techniques were used to determine the structure:

X-RAY DIFFRACTION

The reported resolution of this entry is 1.52 Å.

Percentile scores (ranging between 0-100) for global validation metrics of the entry are shown in the following graphic. The table shows the number of entries on which the scores are based.



Metric	Whole archive (#Entries)	Similar resolution (#Entries, resolution range(Å))
R_{free}	111664	3365 (1.54-1.50)
Clashscore	122126	3586 (1.54-1.50)
Ramachandran outliers	120053	3504 (1.54-1.50)
Sidechain outliers	120020	3502 (1.54-1.50)
RSRZ outliers	108989	3301 (1.54-1.50)

The table below summarises the geometric issues observed across the polymeric chains and their fit to the electron density. The red, orange, yellow and green segments on the lower bar indicate the fraction of residues that contain outliers for ≥ 3 , 2, 1 and 0 types of geometric quality criteria. A grey segment represents the fraction of residues that are not modelled. The numeric value for each fraction is indicated below the corresponding segment, with a dot representing fractions $\leq 5\%$. The upper red bar (where present) indicates the fraction of residues that have poor fit to the electron density. The numeric value is given above the bar.

Mol	Chain	Length	Quality of chain
1	A	1045	<div> <div>8%</div> <div>87%</div> <div>10%</div> <div>.</div> </div>

2 Entry composition

There are 7 unique types of molecules in this entry. The entry contains 9444 atoms, of which 0 are hydrogens and 0 are deuteriums.

In the tables below, the ZeroOcc column contains the number of atoms modelled with zero occupancy, the AltConf column contains the number of residues with at least one atom in alternate conformation and the Trace column contains the number of residues modelled with at most 2 atoms.

- Molecule 1 is a protein called Alpha-mannosidase 2.

Mol	Chain	Residues	Atoms					ZeroOcc	AltConf	Trace
1	A	1016	Total	C	N	O	S	0	11	0
			8287	5262	1455	1528	42			

There are 13 discrepancies between the modelled and reference sequences:

Chain	Residue	Modelled	Actual	Comment	Reference
A	1	ARG	-	EXPRESSION TAG	UNP Q24451
A	2	SER	-	EXPRESSION TAG	UNP Q24451
A	3	SER	-	EXPRESSION TAG	UNP Q24451
A	4	HIS	-	EXPRESSION TAG	UNP Q24451
A	5	HIS	-	EXPRESSION TAG	UNP Q24451
A	6	HIS	-	EXPRESSION TAG	UNP Q24451
A	7	HIS	-	EXPRESSION TAG	UNP Q24451
A	8	HIS	-	EXPRESSION TAG	UNP Q24451
A	9	HIS	-	EXPRESSION TAG	UNP Q24451
A	10	GLY	-	EXPRESSION TAG	UNP Q24451
A	11	GLU	-	EXPRESSION TAG	UNP Q24451
A	12	PHE	-	EXPRESSION TAG	UNP Q24451
A	907	LYS	GLU	SEE REMARK 999	UNP Q24451

- Molecule 2 is N-ACETYL-D-GLUCOSAMINE (three-letter code: NAG) (formula: C₈H₁₅NO₆).

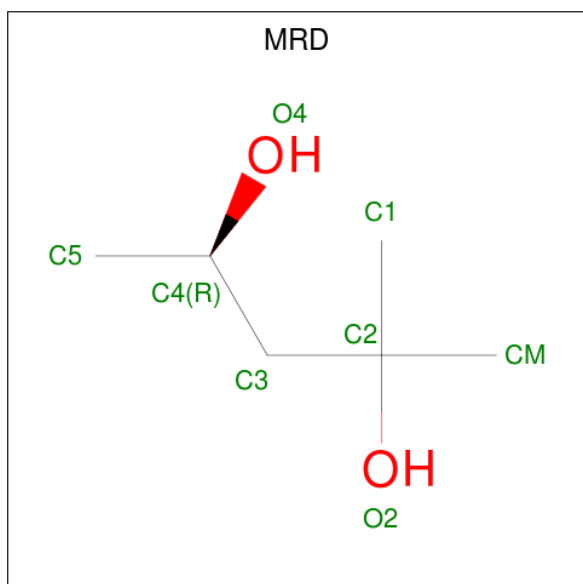


Mol	Chain	Residues	Atoms				ZeroOcc	AltConf
2	A	1	Total	C	N	O	0	0
			14	8	1	5		

- Molecule 3 is ZINC ION (three-letter code: ZN) (formula: Zn).

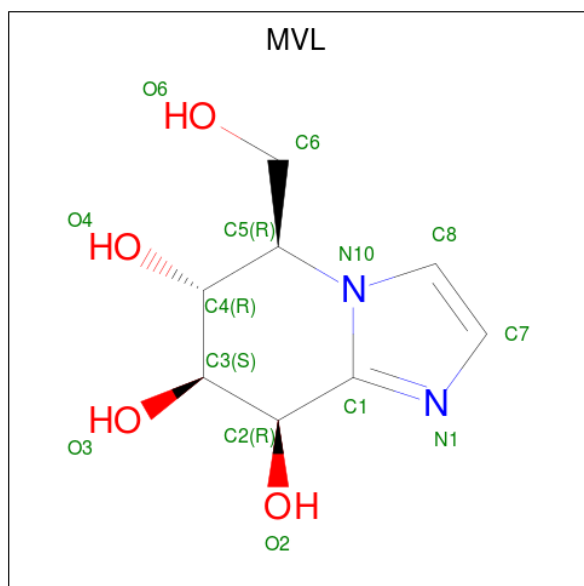
Mol	Chain	Residues	Atoms		ZeroOcc	AltConf
3	A	1	Total	Zn	0	0
			1	1		

- Molecule 4 is (4R)-2-METHYLPENTANE-2,4-DIOL (three-letter code: MRD) (formula: C₆H₁₄O₂).



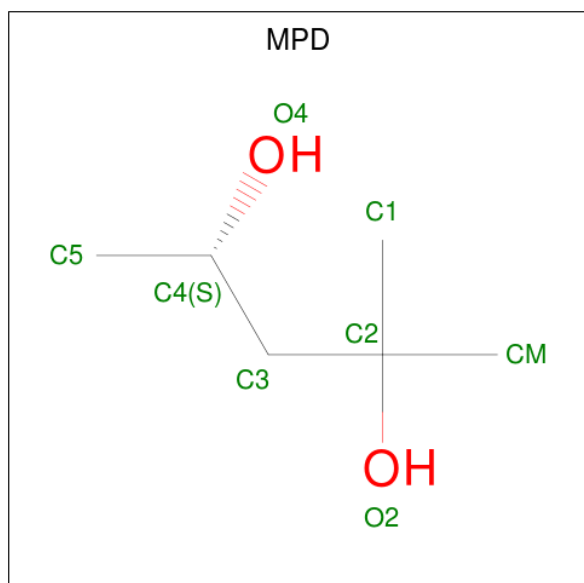
Mol	Chain	Residues	Atoms			ZeroOcc	AltConf
4	A	1	Total	C	O	0	0
			8	6	2		

- Molecule 5 is (5R,6R,7S,8R)-5-(HYDROXYMETHYL)-5,6,7,8-TETRAHYDROIMIDAZO[1,2-A]PYRIDINE-6,7,8-TRIOL (three-letter code: MVL) (formula: $C_8H_{12}N_2O_4$).



Mol	Chain	Residues	Atoms				ZeroOcc	AltConf
5	A	1	Total	C	N	O	0	0
			14	8	2	4		

- Molecule 6 is (4S)-2-METHYL-2,4-PENTANEDIOL (three-letter code: MPD) (formula: $C_6H_{14}O_2$).



Mol	Chain	Residues	Atoms			ZeroOcc	AltConf
6	A	1	Total	C	O	0	0
			8	6	2		
6	A	1	Total	C	O	0	0
			8	6	2		

- Molecule 7 is water.

Mol	Chain	Residues	Atoms		ZeroOcc	AltConf
7	A	1099	Total	O	0	5
			1104	1104		

4 Data and refinement statistics

Property	Value	Source
Space group	P 21 21 21	Depositor
Cell constants a, b, c, α , β , γ	68.63Å 108.80Å 137.03Å 90.00° 90.00° 90.00°	Depositor
Resolution (Å)	30.00 – 1.52 29.53 – 1.52	Depositor EDS
% Data completeness (in resolution range)	97.9 (30.00-1.52) 97.9 (29.53-1.52)	Depositor EDS
R_{merge}	0.08	Depositor
R_{sym}	(Not available)	Depositor
$\langle I/\sigma(I) \rangle$ ¹	1.98 (at 1.52Å)	Xtriage
Refinement program	REFMAC, CNS	Depositor
R, R_{free}	0.186 , 0.208 0.184 , 0.188	Depositor DCC
R_{free} test set	2296 reflections (1.49%)	wwPDB-VP
Wilson B-factor (Å ²)	22.4	Xtriage
Anisotropy	0.106	Xtriage
Bulk solvent k_{sol} (e/Å ³), B_{sol} (Å ²)	0.39 , 56.5	EDS
L-test for twinning ²	$\langle L \rangle = 0.49$, $\langle L^2 \rangle = 0.32$	Xtriage
Estimated twinning fraction	No twinning to report.	Xtriage
F_o, F_c correlation	0.97	EDS
Total number of atoms	9444	wwPDB-VP
Average B, all atoms (Å ²)	26.0	wwPDB-VP

Xtriage's analysis on translational NCS is as follows: *The largest off-origin peak in the Patterson function is 3.64% of the height of the origin peak. No significant pseudotranslation is detected.*

¹Intensities estimated from amplitudes.

²Theoretical values of $\langle |L| \rangle$, $\langle L^2 \rangle$ for acentric reflections are 0.5, 0.333 respectively for untwinned datasets, and 0.375, 0.2 for perfectly twinned datasets.

5 Model quality

5.1 Standard geometry

Bond lengths and bond angles in the following residue types are not validated in this section: ZN, MRD, MPD, MVL, NAG

The Z score for a bond length (or angle) is the number of standard deviations the observed value is removed from the expected value. A bond length (or angle) with $|Z| > 5$ is considered an outlier worth inspection. RMSZ is the root-mean-square of all Z scores of the bond lengths (or angles).

Mol	Chain	Bond lengths		Bond angles	
		RMSZ	$\# Z > 5$	RMSZ	$\# Z > 5$
1	A	0.87	2/8512 (0.0%)	0.89	6/11555 (0.1%)

Chiral center outliers are detected by calculating the chiral volume of a chiral center and verifying if the center is modelled as a planar moiety or with the opposite hand. A planarity outlier is detected by checking planarity of atoms in a peptide group, atoms in a mainchain group or atoms of a sidechain that are expected to be planar.

Mol	Chain	#Chirality outliers	#Planarity outliers
1	A	0	2

All (2) bond length outliers are listed below:

Mol	Chain	Res	Type	Atoms	Z	Observed(Å)	Ideal(Å)
1	A	418	TYR	CE2-CZ	6.00	1.46	1.38
1	A	807	ASP	CB-CG	-5.38	1.40	1.51

The worst 5 of 6 bond angle outliers are listed below:

Mol	Chain	Res	Type	Atoms	Z	Observed($^{\circ}$)	Ideal($^{\circ}$)
1	A	963	ARG	NE-CZ-NH2	-5.98	117.31	120.30
1	A	818	ARG	NE-CZ-NH2	-5.58	117.51	120.30
1	A	432	LEU	CB-CG-CD2	-5.18	102.20	111.00
1	A	437	ARG	NE-CZ-NH1	-5.13	117.74	120.30
1	A	341	ASP	CB-CG-OD2	-5.11	113.70	118.30

There are no chirality outliers.

All (2) planarity outliers are listed below:

Mol	Chain	Res	Type	Group
1	A	30	GLN	Peptide

Continued on next page...

Continued from previous page...

Mol	Chain	Res	Type	Group
1	A	992	GLU	Peptide

5.2 Too-close contacts

In the following table, the Non-H and H(model) columns list the number of non-hydrogen atoms and hydrogen atoms in the chain respectively. The H(added) column lists the number of hydrogen atoms added and optimized by MolProbity. The Clashes column lists the number of clashes within the asymmetric unit, whereas Symm-Clashes lists symmetry related clashes.

Mol	Chain	Non-H	H(model)	H(added)	Clashes	Symm-Clashes
1	A	8287	0	8069	90	0
2	A	14	0	13	0	0
3	A	1	0	0	0	0
4	A	8	0	14	3	0
5	A	14	0	10	1	0
6	A	16	0	28	6	0
7	A	1104	0	0	21	0
All	All	9444	0	8134	98	0

The all-atom clashscore is defined as the number of clashes found per 1000 atoms (including hydrogen atoms). The all-atom clashscore for this structure is 6.

The worst 5 of 98 close contacts within the same asymmetric unit are listed below, sorted by their clash magnitude.

Atom-1	Atom-2	Interatomic distance (Å)	Clash overlap (Å)
1:A:264[B]:MET:CE	1:A:337:PRO:HG2	1.96	0.95
6:A:1051:MPD:H53	6:A:1051:MPD:HM1	1.46	0.94
1:A:601:ASP:HB2	1:A:608:HIS:NE2	1.85	0.91
1:A:264[B]:MET:HE1	1:A:337:PRO:HG2	1.54	0.88
1:A:723:ARG:HH11	1:A:723:ARG:HG2	1.37	0.85

There are no symmetry-related clashes.

5.3 Torsion angles

5.3.1 Protein backbone

In the following table, the Percentiles column shows the percent Ramachandran outliers of the chain as a percentile score with respect to all X-ray entries followed by that with respect to entries of similar resolution.

The Analysed column shows the number of residues for which the backbone conformation was analysed, and the total number of residues.

Mol	Chain	Analysed	Favoured	Allowed	Outliers	Percentiles	
1	A	1025/1045 (98%)	998 (97%)	23 (2%)	4 (0%)	36	14

All (4) Ramachandran outliers are listed below:

Mol	Chain	Res	Type
1	A	95	TRP
1	A	993	HIS
1	A	204	ASP
1	A	549	ILE

5.3.2 Protein sidechains ⓘ

In the following table, the Percentiles column shows the percent sidechain outliers of the chain as a percentile score with respect to all X-ray entries followed by that with respect to entries of similar resolution.

The Analysed column shows the number of residues for which the sidechain conformation was analysed, and the total number of residues.

Mol	Chain	Analysed	Rotameric	Outliers	Percentiles	
1	A	914/929 (98%)	907 (99%)	7 (1%)	83	67

5 of 7 residues with a non-rotameric sidechain are listed below:

Mol	Chain	Res	Type
1	A	610	GLN
1	A	828	TYR
1	A	654	LYS
1	A	447	SER
1	A	723	ARG

Some sidechains can be flipped to improve hydrogen bonding and reduce clashes. All (1) such sidechains are listed below:

Mol	Chain	Res	Type
1	A	701	GLN

5.3.3 RNA ⓘ

There are no RNA molecules in this entry.

5.4 Non-standard residues in protein, DNA, RNA chains ⓘ

There are no non-standard protein/DNA/RNA residues in this entry.

5.5 Carbohydrates ⓘ

There are no carbohydrates in this entry.

5.6 Ligand geometry ⓘ

Of 6 ligands modelled in this entry, 1 is monoatomic - leaving 5 for Mogul analysis.

In the following table, the Counts columns list the number of bonds (or angles) for which Mogul statistics could be retrieved, the number of bonds (or angles) that are observed in the model and the number of bonds (or angles) that are defined in the Chemical Component Dictionary. The Link column lists molecule types, if any, to which the group is linked. The Z score for a bond length (or angle) is the number of standard deviations the observed value is removed from the expected value. A bond length (or angle) with $|Z| > 2$ is considered an outlier worth inspection. RMSZ is the root-mean-square of all Z scores of the bond lengths (or angles).

Mol	Type	Chain	Res	Link	Bond lengths			Bond angles		
					Counts	RMSZ	$\# Z > 2$	Counts	RMSZ	$\# Z > 2$
2	NAG	A	1046	1	14,14,15	0.40	0	17,19,21	1.16	1 (5%)
4	MRD	A	1048	-	7,7,7	0.43	0	9,10,10	0.84	0
5	MVL	A	1049	3	11,15,15	0.71	0	10,22,22	2.37	5 (50%)
6	MPD	A	1050	-	7,7,7	0.52	0	9,10,10	0.47	0
6	MPD	A	1051	-	7,7,7	0.33	0	9,10,10	1.18	1 (11%)

In the following table, the Chirals column lists the number of chiral outliers, the number of chiral centers analysed, the number of these observed in the model and the number defined in the Chemical Component Dictionary. Similar counts are reported in the Torsion and Rings columns. '-' means no outliers of that kind were identified.

Mol	Type	Chain	Res	Link	Chirals	Torsions	Rings
2	NAG	A	1046	1	-	2/6/23/26	0/1/1/1
4	MRD	A	1048	-	-	1/5/5/5	-
5	MVL	A	1049	3	-	0/2/22/22	0/1/2/2
6	MPD	A	1050	-	-	0/5/5/5	-

Continued on next page...

Continued from previous page...

Mol	Type	Chain	Res	Link	Chirals	Torsions	Rings
6	MPD	A	1051	-	-	1/5/5/5	-

There are no bond length outliers.

The worst 5 of 7 bond angle outliers are listed below:

Mol	Chain	Res	Type	Atoms	Z	Observed(°)	Ideal(°)
5	A	1049	MVL	O4-C4-C5	-4.21	102.28	109.78
5	A	1049	MVL	C3-C4-C5	3.87	117.85	111.32
2	A	1046	NAG	C1-C2-N2	-3.38	104.72	110.49
5	A	1049	MVL	C4-C3-C2	2.82	114.43	110.38
6	A	1051	MPD	CM-C2-C3	2.19	120.16	109.96

There are no chirality outliers.

All (4) torsion outliers are listed below:

Mol	Chain	Res	Type	Atoms
4	A	1048	MRD	C2-C3-C4-O4
2	A	1046	NAG	C4-C5-C6-O6
2	A	1046	NAG	O5-C5-C6-O6
6	A	1051	MPD	C2-C3-C4-C5

There are no ring outliers.

4 monomers are involved in 10 short contacts:

Mol	Chain	Res	Type	Clashes	Symm-Clashes
4	A	1048	MRD	3	0
5	A	1049	MVL	1	0
6	A	1050	MPD	2	0
6	A	1051	MPD	4	0

5.7 Other polymers [i](#)

There are no such residues in this entry.

5.8 Polymer linkage issues [i](#)

There are no chain breaks in this entry.

6 Fit of model and data [i](#)

6.1 Protein, DNA and RNA chains [i](#)

In the following table, the column labelled ‘#RSRZ > 2’ contains the number (and percentage) of RSRZ outliers, followed by percent RSRZ outliers for the chain as percentile scores relative to all X-ray entries and entries of similar resolution. The OWAB column contains the minimum, median, 95th percentile and maximum values of the occupancy-weighted average B-factor per residue. The column labelled ‘Q < 0.9’ lists the number of (and percentage) of residues with an average occupancy less than 0.9.

Mol	Chain	Analysed	<RSRZ>	#RSRZ>2	OWAB(Å ²)	Q<0.9
1	A	1016/1045 (97%)	0.36	79 (7%) 13 14	14, 23, 38, 61	0

The worst 5 of 79 RSRZ outliers are listed below:

Mol	Chain	Res	Type	RSRZ
1	A	602	THR	8.1
1	A	603	LEU	7.5
1	A	534	SER	7.4
1	A	537	GLU	6.7
1	A	539	SER	6.6

6.2 Non-standard residues in protein, DNA, RNA chains [i](#)

There are no non-standard protein/DNA/RNA residues in this entry.

6.3 Carbohydrates [i](#)

There are no carbohydrates in this entry.

6.4 Ligands [i](#)

In the following table, the Atoms column lists the number of modelled atoms in the group and the number defined in the chemical component dictionary. The B-factors column lists the minimum, median, 95th percentile and maximum values of B factors of atoms in the group. The column labelled ‘Q < 0.9’ lists the number of atoms with occupancy less than 0.9.

Mol	Type	Chain	Res	Atoms	RSCC	RSR	B-factors(Å ²)	Q<0.9
6	MPD	A	1051	8/8	0.74	0.30	28,31,34,37	0
6	MPD	A	1050	8/8	0.83	0.19	50,53,55,56	0

Continued on next page...

Continued from previous page...

Mol	Type	Chain	Res	Atoms	RSCC	RSR	B-factors(\AA^2)	Q<0.9
2	NAG	A	1046	14/15	0.83	0.46	57,65,66,67	0
4	MRD	A	1048	8/8	0.87	0.16	24,30,32,34	0
5	MVL	A	1049	14/14	0.89	0.09	18,22,29,31	0
3	ZN	A	1047	1/1	0.99	0.05	20,20,20,20	0

6.5 Other polymers [i](#)

There are no such residues in this entry.