



Full wwPDB X-ray Structure Validation Report ⓘ

Feb 10, 2020 – 01:24 PM EST

PDB ID : 5D4J
Title : Chloride-bound form of a copper nitrite reductase from *Alcaligenes faecalis*
Authors : Fukuda, Y.; Tse, K.M.; Nakane, T.; Nakatsu, T.; Suzuki, M.; Sugahara, M.; Inoue, S.; Yumoto, F.; Matsugaki, N.; Nango, E.; Tono, K.; Joti, Y.; Kameshima, T.; Song, C.; Yabashi, M.; Nureki, O.; Murphy, M.E.P.; Inoue, T.; Iwata, S.; Mizohata, E.
Deposited on : 2015-08-07
Resolution : 2.00 Å(reported)

This is a Full wwPDB X-ray Structure Validation Report for a publicly released PDB entry.

We welcome your comments at validation@mail.wwpdb.org

A user guide is available at

<https://www.wwpdb.org/validation/2017/XrayValidationReportHelp>

with specific help available everywhere you see the ⓘ symbol.

The following versions of software and data (see [references ⓘ](#)) were used in the production of this report:

MolProbity : 4.02b-467
Mogul : 1.8.0 (224370), CSD as540be (2019)
Xtriage (Phenix) : 1.13
EDS : 2.4
Percentile statistics : 20171227.v01 (using entries in the PDB archive December 27th 2017)
Refmac : 5.8.0158
CCP4 : 7.0 (Gargrove)
Ideal geometry (proteins) : Engh & Huber (2001)
Ideal geometry (DNA, RNA) : Parkinson et al. (1996)
Validation Pipeline (wwPDB-VP) : 2.4

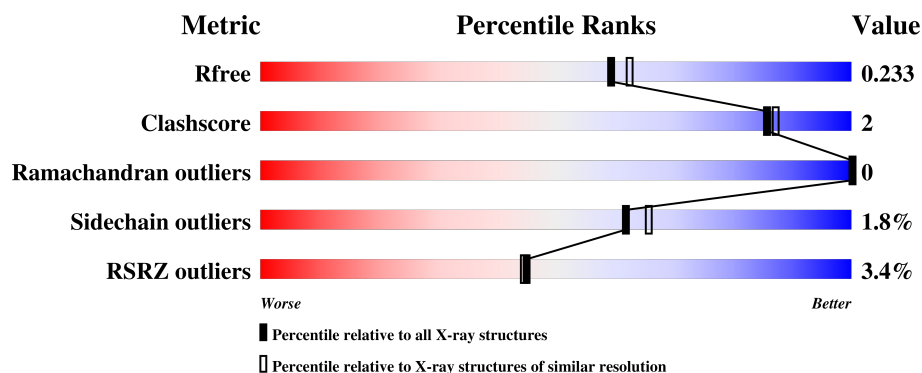
1 Overall quality at a glance

The following experimental techniques were used to determine the structure:

X-RAY DIFFRACTION

The reported resolution of this entry is 2.00 Å.

Percentile scores (ranging between 0-100) for global validation metrics of the entry are shown in the following graphic. The table shows the number of entries on which the scores are based.



Metric	Whole archive (#Entries)	Similar resolution (#Entries, resolution range(Å))
R_{free}	111664	7193 (2.00-2.00)
Clashscore	122126	8267 (2.00-2.00)
Ramachandran outliers	120053	8166 (2.00-2.00)
Sidechain outliers	120020	8165 (2.00-2.00)
RSRZ outliers	108989	7011 (2.00-2.00)

The table below summarises the geometric issues observed across the polymeric chains and their fit to the electron density. The red, orange, yellow and green segments on the lower bar indicate the fraction of residues that contain outliers for ≥ 3 , 2, 1 and 0 types of geometric quality criteria. A grey segment represents the fraction of residues that are not modelled. The numeric value for each fraction is indicated below the corresponding segment, with a dot representing fractions $\leq 5\%$. The upper red bar (where present) indicates the fraction of residues that have poor fit to the electron density. The numeric value is given above the bar.

Mol	Chain	Length	Quality of chain
1	A	342	<div> <div>4%</div> <div>89%</div> <div>8%</div> <div>••</div> </div>
1	B	342	<div> <div>3%</div> <div>90%</div> <div>8%</div> <div>•</div> </div>
1	C	342	<div> <div>3%</div> <div>87%</div> <div>11%</div> <div>•</div> </div>

The following table lists non-polymeric compounds, carbohydrate monomers and non-standard residues in protein, DNA, RNA chains that are outliers for geometric or electron-density-fit criteria:

Mol	Type	Chain	Res	Chirality	Geometry	Clashes	Electron density
4	GOL	C	607	-	X	-	-

2 Entry composition

There are 6 unique types of molecules in this entry. The entry contains 8149 atoms, of which 0 are hydrogens and 0 are deuteriums.

In the tables below, the ZeroOcc column contains the number of atoms modelled with zero occupancy, the AltConf column contains the number of residues with at least one atom in alternate conformation and the Trace column contains the number of residues modelled with at most 2 atoms.

- Molecule 1 is a protein called Copper-containing nitrite reductase.

Mol	Chain	Residues	Atoms					ZeroOcc	AltConf	Trace
1	A	335	Total	C	N	O	S	0	1	0
			2563	1640	431	481	11			
1	B	336	Total	C	N	O	S	0	0	0
			2560	1639	430	480	11			
1	C	336	Total	C	N	O	S	0	0	0
			2560	1639	430	480	11			

There are 15 discrepancies between the modelled and reference sequences:

Chain	Residue	Modelled	Actual	Comment	Reference
A	3	MET	-	initiating methionine	UNP P38501
A	341	LEU	-	expression tag	UNP P38501
A	342	VAL	-	expression tag	UNP P38501
A	343	PRO	-	expression tag	UNP P38501
A	344	ARG	-	expression tag	UNP P38501
B	3	MET	-	initiating methionine	UNP P38501
B	341	LEU	-	expression tag	UNP P38501
B	342	VAL	-	expression tag	UNP P38501
B	343	PRO	-	expression tag	UNP P38501
B	344	ARG	-	expression tag	UNP P38501
C	3	MET	-	initiating methionine	UNP P38501
C	341	LEU	-	expression tag	UNP P38501
C	342	VAL	-	expression tag	UNP P38501
C	343	PRO	-	expression tag	UNP P38501
C	344	ARG	-	expression tag	UNP P38501

- Molecule 2 is COPPER (II) ION (three-letter code: CU) (formula: Cu).

Mol	Chain	Residues	Atoms		ZeroOcc	AltConf
2	B	2	Total	Cu	0	0
			2	2		

Continued on next page...

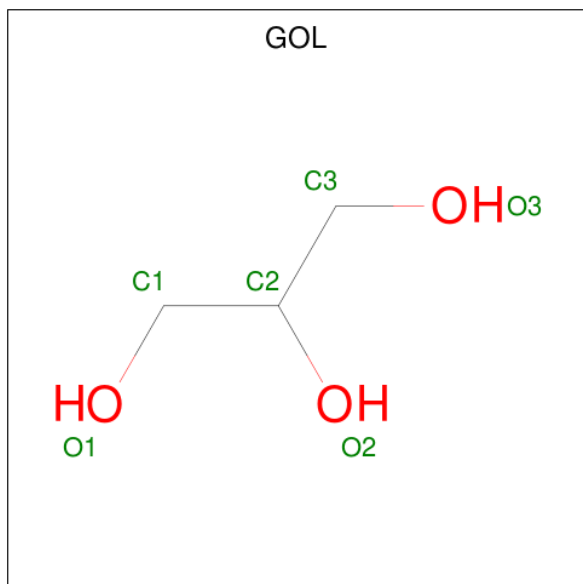
Continued from previous page...

Mol	Chain	Residues	Atoms		ZeroOcc	AltConf
2	A	2	Total	Cu	0	0
			2	2		
2	C	2	Total	Cu	0	0
			2	2		

- Molecule 3 is CHLORIDE ION (three-letter code: CL) (formula: Cl).

Mol	Chain	Residues	Atoms		ZeroOcc	AltConf
3	B	1	Total	Cl	0	0
			1	1		
3	A	1	Total	Cl	0	0
			1	1		
3	C	1	Total	Cl	0	0
			1	1		

- Molecule 4 is GLYCEROL (three-letter code: GOL) (formula: C₃H₈O₃).



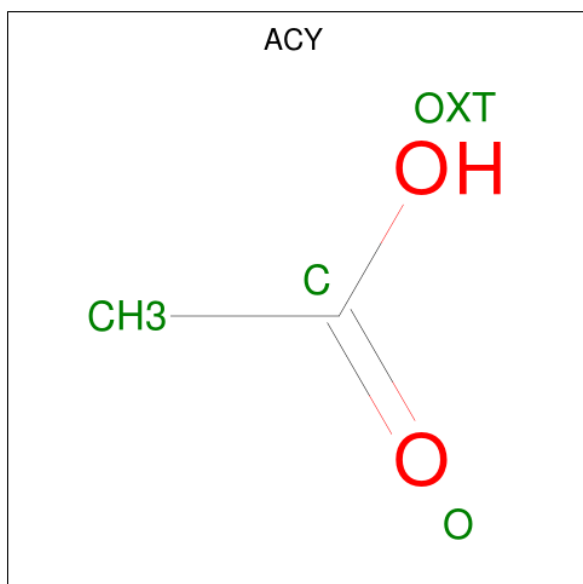
Mol	Chain	Residues	Atoms			ZeroOcc	AltConf
4	A	1	Total	C	O	0	0
			6	3	3		
4	A	1	Total	C	O	0	0
			6	3	3		
4	A	1	Total	C	O	0	0
			6	3	3		
4	B	1	Total	C	O	0	0
			6	3	3		

Continued on next page...

Continued from previous page...

Mol	Chain	Residues	Atoms			ZeroOcc	AltConf
4	B	1	Total	C	O	0	0
			6	3	3		
4	C	1	Total	C	O	0	0
			6	3	3		
4	C	1	Total	C	O	0	0
			6	3	3		
4	C	1	Total	C	O	0	0
			6	3	3		
4	C	1	Total	C	O	0	0
			6	3	3		

- Molecule 5 is ACETIC ACID (three-letter code: ACY) (formula: C₂H₄O₂).



Mol	Chain	Residues	Atoms			ZeroOcc	AltConf
5	A	1	Total	C	O	0	0
			4	2	2		
5	B	1	Total	C	O	0	0
			4	2	2		
5	C	1	Total	C	O	0	0
			4	2	2		

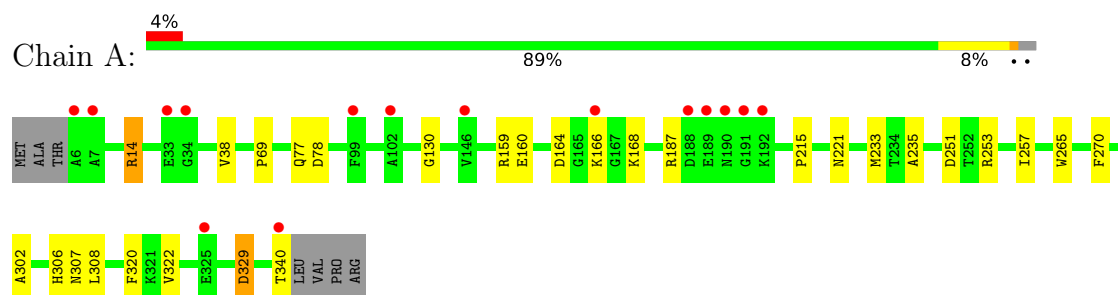
- Molecule 6 is water.

Mol	Chain	Residues	Atoms		ZeroOcc	AltConf
6	A	114	Total 114	O 114	0	0
6	B	118	Total 118	O 118	0	0
6	C	153	Total 153	O 153	0	0

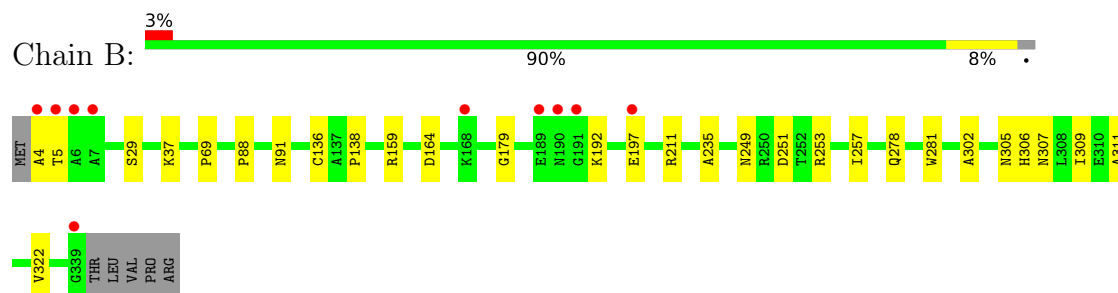
3 Residue-property plots [i](#)

These plots are drawn for all protein, RNA and DNA chains in the entry. The first graphic for a chain summarises the proportions of the various outlier classes displayed in the second graphic. The second graphic shows the sequence view annotated by issues in geometry and electron density. Residues are color-coded according to the number of geometric quality criteria for which they contain at least one outlier: green = 0, yellow = 1, orange = 2 and red = 3 or more. A red dot above a residue indicates a poor fit to the electron density ($RSRZ > 2$). Stretches of 2 or more consecutive residues without any outlier are shown as a green connector. Residues present in the sample, but not in the model, are shown in grey.

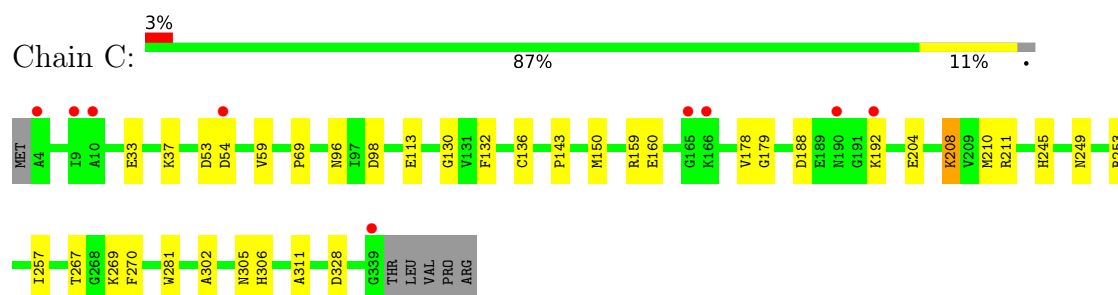
• Molecule 1: Copper-containing nitrite reductase



• Molecule 1: Copper-containing nitrite reductase



• Molecule 1: Copper-containing nitrite reductase



4 Data and refinement statistics

Property	Value	Source
Space group	P 21 21 21	Depositor
Cell constants a, b, c, α , β , γ	61.40Å 102.21Å 144.51Å 90.00° 90.00° 90.00°	Depositor
Resolution (Å)	24.79 – 2.00 24.79 – 2.00	Depositor EDS
% Data completeness (in resolution range)	99.6 (24.79-2.00) 99.7 (24.79-2.00)	Depositor EDS
R_{merge}	0.15	Depositor
R_{sym}	(Not available)	Depositor
$\langle I/\sigma(I) \rangle$ ¹	2.13 (at 1.99Å)	Xtriage
Refinement program	REFMAC 5.8.0103	Depositor
R, R_{free}	0.182 , 0.232 0.183 , 0.233	Depositor DCC
R_{free} test set	2979 reflections (4.80%)	wwPDB-VP
Wilson B-factor (Å ²)	32.4	Xtriage
Anisotropy	0.088	Xtriage
Bulk solvent k_{sol} (e/Å ³), B_{sol} (Å ²)	0.39 , 47.1	EDS
L-test for twinning ²	$\langle L \rangle = 0.48$, $\langle L^2 \rangle = 0.31$	Xtriage
Estimated twinning fraction	No twinning to report.	Xtriage
F_o, F_c correlation	0.97	EDS
Total number of atoms	8149	wwPDB-VP
Average B, all atoms (Å ²)	33.0	wwPDB-VP

Xtriage's analysis on translational NCS is as follows: *The largest off-origin peak in the Patterson function is 4.71% of the height of the origin peak. No significant pseudotranslation is detected.*

¹Intensities estimated from amplitudes.

²Theoretical values of $\langle |L| \rangle$, $\langle L^2 \rangle$ for acentric reflections are 0.5, 0.333 respectively for untwinned datasets, and 0.375, 0.2 for perfectly twinned datasets.

5 Model quality ⓘ

5.1 Standard geometry ⓘ

Bond lengths and bond angles in the following residue types are not validated in this section: GOL, ACY, CU, CL

The Z score for a bond length (or angle) is the number of standard deviations the observed value is removed from the expected value. A bond length (or angle) with $|Z| > 5$ is considered an outlier worth inspection. RMSZ is the root-mean-square of all Z scores of the bond lengths (or angles).

Mol	Chain	Bond lengths		Bond angles	
		RMSZ	$\# Z > 5$	RMSZ	$\# Z > 5$
1	A	0.87	1/2634 (0.0%)	0.90	6/3592 (0.2%)
1	B	0.86	0/2631	0.90	6/3588 (0.2%)
1	C	0.88	0/2631	0.89	7/3588 (0.2%)
All	All	0.87	1/7896 (0.0%)	0.89	19/10768 (0.2%)

Chiral center outliers are detected by calculating the chiral volume of a chiral center and verifying if the center is modelled as a planar moiety or with the opposite hand. A planarity outlier is detected by checking planarity of atoms in a peptide group, atoms in a mainchain group or atoms of a sidechain that are expected to be planar.

Mol	Chain	#Chirality outliers	#Planarity outliers
1	A	0	1
1	B	0	1
1	C	0	1
All	All	0	3

All (1) bond length outliers are listed below:

Mol	Chain	Res	Type	Atoms	Z	Observed(Å)	Ideal(Å)
1	A	265	TRP	CB-CG	5.00	1.59	1.50

All (19) bond angle outliers are listed below:

Mol	Chain	Res	Type	Atoms	Z	Observed(°)	Ideal(°)
1	B	211	ARG	NE-CZ-NH2	9.07	124.83	120.30
1	C	98	ASP	CB-CG-OD1	7.27	124.84	118.30
1	A	187	ARG	NE-CZ-NH1	6.94	123.77	120.30
1	B	159	ARG	NE-CZ-NH2	-6.80	116.90	120.30
1	B	211	ARG	NE-CZ-NH1	-6.68	116.96	120.30
1	B	164	ASP	CB-CG-OD1	6.35	124.02	118.30

Continued on next page...

Continued from previous page...

Mol	Chain	Res	Type	Atoms	Z	Observed(°)	Ideal(°)
1	B	159	ARG	NE-CZ-NH1	5.88	123.24	120.30
1	C	98	ASP	CB-CG-OD2	-5.78	113.10	118.30
1	A	14	ARG	NE-CZ-NH1	5.77	123.19	120.30
1	C	53	ASP	CB-CG-OD1	5.76	123.49	118.30
1	A	251	ASP	CB-CG-OD1	5.64	123.37	118.30
1	C	159	ARG	NE-CZ-NH1	5.53	123.06	120.30
1	A	329	ASP	CB-CG-OD1	5.44	123.19	118.30
1	C	188	ASP	CB-CG-OD1	5.37	123.13	118.30
1	A	159	ARG	NE-CZ-NH1	5.23	122.91	120.30
1	B	251	ASP	CB-CG-OD1	5.19	122.97	118.30
1	C	328	ASP	CB-CG-OD1	5.07	122.86	118.30
1	C	211	ARG	NE-CZ-NH2	5.02	122.81	120.30
1	A	308	LEU	CB-CG-CD1	-5.01	102.48	111.00

There are no chirality outliers.

All (3) planarity outliers are listed below:

Mol	Chain	Res	Type	Group
1	A	306	HIS	Peptide
1	B	306	HIS	Peptide
1	C	306	HIS	Peptide

5.2 Too-close contacts ⓘ

In the following table, the Non-H and H(model) columns list the number of non-hydrogen atoms and hydrogen atoms in the chain respectively. The H(added) column lists the number of hydrogen atoms added and optimized by MolProbity. The Clashes column lists the number of clashes within the asymmetric unit, whereas Symm-Clashes lists symmetry related clashes.

Mol	Chain	Non-H	H(model)	H(added)	Clashes	Symm-Clashes
1	A	2563	0	2485	12	0
1	B	2560	0	2485	12	0
1	C	2560	0	2485	18	0
2	A	2	0	0	0	0
2	B	2	0	0	0	0
2	C	2	0	0	0	0
3	A	1	0	0	0	0
3	B	1	0	0	0	0
3	C	1	0	0	1	0
4	A	18	0	24	0	0
4	B	12	0	16	0	0

Continued on next page...

Continued from previous page...

Mol	Chain	Non-H	H(model)	H(added)	Clashes	Symm-Clashes
4	C	30	0	40	2	0
5	A	4	0	3	0	0
5	B	4	0	3	0	0
5	C	4	0	3	0	0
6	A	114	0	0	2	0
6	B	118	0	0	0	0
6	C	153	0	0	0	0
All	All	8149	0	7544	37	0

The all-atom clashscore is defined as the number of clashes found per 1000 atoms (including hydrogen atoms). The all-atom clashscore for this structure is 2.

All (37) close contacts within the same asymmetric unit are listed below, sorted by their clash magnitude.

Atom-1	Atom-2	Interatomic distance (Å)	Clash overlap (Å)
1:C:257:ILE:HG12	3:C:601:CL:CL	2.16	0.83
1:C:59:VAL:HG13	4:C:608:GOL:H31	1.80	0.62
1:C:54:ASP:HA	4:C:607:GOL:H2	1.82	0.62
1:C:143:PRO:HB2	1:C:210:MET:CE	2.38	0.53
1:A:168:LYS:HG3	6:A:703:HOH:O	2.07	0.53
1:C:305:ASN:O	1:C:311:ALA:HB2	2.09	0.53
1:C:204:GLU:O	1:C:208:LYS:HD3	2.08	0.53
1:A:307:ASN:HA	1:B:249:ASN:O	2.09	0.52
1:A:164:ASP:OD2	1:A:168:LYS:HB2	2.09	0.52
1:C:69:PRO:HG3	1:C:179:GLY:HA3	1.92	0.51
1:B:257:ILE:HD12	1:B:302:ALA:HB3	1.93	0.51
1:A:329:ASP:OD2	1:B:4:ALA:HA	2.12	0.50
1:C:257:ILE:HD12	1:C:302:ALA:HB3	1.94	0.49
1:A:14:ARG:HG2	1:A:38:VAL:HB	1.95	0.48
1:C:132:PHE:CE2	1:C:269:LYS:HE3	2.49	0.48
1:A:235:ALA:O	1:A:322:VAL:HA	2.13	0.48
1:B:69:PRO:HG3	1:B:179:GLY:HA3	1.96	0.48
1:B:88:PRO:HD2	1:B:91:ASN:ND2	2.29	0.48
1:B:235:ALA:O	1:B:322:VAL:HA	2.15	0.47
1:C:143:PRO:HB2	1:C:210:MET:HE1	1.97	0.47
1:A:130:GLY:HA2	1:A:270:PHE:CD2	2.50	0.46
1:A:160:GLU:HG2	6:A:666:HOH:O	2.17	0.44
1:B:278:GLN:OE1	1:C:267:THR:HB	2.17	0.44
1:B:305:ASN:O	1:B:311:ALA:HB2	2.18	0.44
1:B:253:ARG:HA	1:B:281:TRP:O	2.19	0.43
1:A:77:GLN:O	1:A:78:ASP:HB2	2.18	0.43

Continued on next page...

Continued from previous page...

Atom-1	Atom-2	Interatomic distance (Å)	Clash overlap (Å)
1:C:178:VAL:O	1:C:245:HIS:HA	2.18	0.43
1:A:257:ILE:HD12	1:A:302:ALA:HB3	2.01	0.43
1:C:130:GLY:HA2	1:C:270:PHE:CD2	2.54	0.42
1:A:69:PRO:HD3	1:A:221[B]:ASN:HA	2.02	0.42
1:B:307:ASN:HA	1:C:249:ASN:O	2.20	0.42
1:C:253:ARG:HA	1:C:281:TRP:O	2.19	0.42
1:B:136:CYS:SG	1:B:138:PRO:HD3	2.60	0.42
1:A:233:MET:O	1:A:320:PHE:HA	2.20	0.41
1:C:96:ASN:HB3	1:C:113:GLU:HA	2.02	0.41
1:B:309:ILE:HG12	1:C:210:MET:HE3	2.03	0.41
1:C:136:CYS:HB2	1:C:150:MET:HG2	2.04	0.40

There are no symmetry-related clashes.

5.3 Torsion angles [i](#)

5.3.1 Protein backbone [i](#)

In the following table, the Percentiles column shows the percent Ramachandran outliers of the chain as a percentile score with respect to all X-ray entries followed by that with respect to entries of similar resolution.

The Analysed column shows the number of residues for which the backbone conformation was analysed, and the total number of residues.

Mol	Chain	Analysed	Favoured	Allowed	Outliers	Percentiles	
1	A	334/342 (98%)	327 (98%)	7 (2%)	0	100	100
1	B	334/342 (98%)	327 (98%)	7 (2%)	0	100	100
1	C	334/342 (98%)	330 (99%)	4 (1%)	0	100	100
All	All	1002/1026 (98%)	984 (98%)	18 (2%)	0	100	100

There are no Ramachandran outliers to report.

5.3.2 Protein sidechains [i](#)

In the following table, the Percentiles column shows the percent sidechain outliers of the chain as a percentile score with respect to all X-ray entries followed by that with respect to entries of similar resolution.

The Analysed column shows the number of residues for which the sidechain conformation was

analysed, and the total number of residues.

Mol	Chain	Analysed	Rotameric	Outliers	Percentiles	
1	A	265/270 (98%)	261 (98%)	4 (2%)	67	72
1	B	264/270 (98%)	259 (98%)	5 (2%)	60	64
1	C	264/270 (98%)	259 (98%)	5 (2%)	60	64
All	All	793/810 (98%)	779 (98%)	14 (2%)	62	66

All (14) residues with a non-rotameric sidechain are listed below:

Mol	Chain	Res	Type
1	A	166	LYS
1	A	215	PRO
1	A	253	ARG
1	A	340	THR
1	B	5	THR
1	B	29	SER
1	B	37	LYS
1	B	192	LYS
1	B	197	GLU
1	C	33	GLU
1	C	37	LYS
1	C	160	GLU
1	C	192	LYS
1	C	208	LYS

Some sidechains can be flipped to improve hydrogen bonding and reduce clashes. All (3) such sidechains are listed below:

Mol	Chain	Res	Type
1	A	115	ASN
1	C	115	ASN
1	C	163	HIS

5.3.3 RNA ⓘ

There are no RNA molecules in this entry.

5.4 Non-standard residues in protein, DNA, RNA chains ⓘ

There are no non-standard protein/DNA/RNA residues in this entry.

5.5 Carbohydrates [i](#)

There are no carbohydrates in this entry.

5.6 Ligand geometry [i](#)

Of 22 ligands modelled in this entry, 9 are monoatomic - leaving 13 for Mogul analysis.

In the following table, the Counts columns list the number of bonds (or angles) for which Mogul statistics could be retrieved, the number of bonds (or angles) that are observed in the model and the number of bonds (or angles) that are defined in the Chemical Component Dictionary. The Link column lists molecule types, if any, to which the group is linked. The Z score for a bond length (or angle) is the number of standard deviations the observed value is removed from the expected value. A bond length (or angle) with $|Z| > 2$ is considered an outlier worth inspection. RMSZ is the root-mean-square of all Z scores of the bond lengths (or angles).

Mol	Type	Chain	Res	Link	Bond lengths			Bond angles		
					Counts	RMSZ	# Z > 2	Counts	RMSZ	# Z > 2
4	GOL	A	504	-	5,5,5	0.61	0	5,5,5	1.54	1 (20%)
4	GOL	A	505	-	5,5,5	0.35	0	5,5,5	1.27	1 (20%)
4	GOL	A	506	-	5,5,5	0.42	0	5,5,5	0.66	0
5	ACY	A	507	-	1,3,3	1.91	0	0,3,3	0.00	-
4	GOL	B	504	-	5,5,5	0.47	0	5,5,5	1.03	1 (20%)
4	GOL	B	505	-	5,5,5	0.34	0	5,5,5	1.28	0
5	ACY	B	506	-	1,3,3	4.40	1 (100%)	0,3,3	0.00	-
4	GOL	C	604	-	5,5,5	0.26	0	5,5,5	0.97	0
4	GOL	C	605	-	5,5,5	0.31	0	5,5,5	0.87	0
4	GOL	C	606	-	5,5,5	0.26	0	5,5,5	0.59	0
4	GOL	C	607	-	5,5,5	0.50	0	5,5,5	1.40	2 (40%)
4	GOL	C	608	-	5,5,5	0.77	0	5,5,5	0.90	0
5	ACY	C	609	-	1,3,3	1.48	0	0,3,3	0.00	-

In the following table, the Chirals column lists the number of chiral outliers, the number of chiral centers analysed, the number of these observed in the model and the number defined in the Chemical Component Dictionary. Similar counts are reported in the Torsion and Rings columns. '-' means no outliers of that kind were identified.

Mol	Type	Chain	Res	Link	Chirals	Torsions	Rings
4	GOL	A	504	-	-	2/4/4/4	-
4	GOL	A	505	-	-	2/4/4/4	-
4	GOL	A	506	-	-	4/4/4/4	-
4	GOL	B	504	-	-	2/4/4/4	-
4	GOL	B	505	-	-	0/4/4/4	-

Continued on next page...

Continued from previous page...

Mol	Type	Chain	Res	Link	Chirals	Torsions	Rings
4	GOL	C	604	-	-	2/4/4/4	-
4	GOL	C	605	-	-	0/4/4/4	-
4	GOL	C	606	-	-	0/4/4/4	-
4	GOL	C	607	-	-	4/4/4/4	-
4	GOL	C	608	-	-	4/4/4/4	-

All (1) bond length outliers are listed below:

Mol	Chain	Res	Type	Atoms	Z	Observed(Å)	Ideal(Å)
5	B	506	ACY	CH3-C	4.40	1.54	1.48

All (5) bond angle outliers are listed below:

Mol	Chain	Res	Type	Atoms	Z	Observed(°)	Ideal(°)
4	A	504	GOL	C3-C2-C1	-2.32	102.71	111.75
4	C	607	GOL	O1-C1-C2	-2.16	99.68	110.12
4	A	505	GOL	C3-C2-C1	-2.13	103.44	111.75
4	B	504	GOL	O1-C1-C2	-2.03	100.31	110.12
4	C	607	GOL	O2-C2-C3	2.03	118.05	109.12

There are no chirality outliers.

All (20) torsion outliers are listed below:

Mol	Chain	Res	Type	Atoms
4	C	604	GOL	O1-C1-C2-C3
4	C	608	GOL	O1-C1-C2-C3
4	C	608	GOL	C1-C2-C3-O3
4	C	607	GOL	O1-C1-C2-O2
4	C	607	GOL	O1-C1-C2-C3
4	A	505	GOL	C1-C2-C3-O3
4	A	505	GOL	O2-C2-C3-O3
4	A	506	GOL	C1-C2-C3-O3
4	B	504	GOL	O1-C1-C2-C3
4	B	504	GOL	O1-C1-C2-O2
4	A	506	GOL	O1-C1-C2-C3
4	A	504	GOL	C1-C2-C3-O3
4	C	604	GOL	O1-C1-C2-O2
4	C	608	GOL	O1-C1-C2-O2
4	A	506	GOL	O1-C1-C2-O2
4	C	608	GOL	O2-C2-C3-O3

Continued on next page...

Continued from previous page...

Mol	Chain	Res	Type	Atoms
4	C	607	GOL	O2-C2-C3-O3
4	A	506	GOL	O2-C2-C3-O3
4	A	504	GOL	O2-C2-C3-O3
4	C	607	GOL	C1-C2-C3-O3

There are no ring outliers.

2 monomers are involved in 2 short contacts:

Mol	Chain	Res	Type	Clashes	Symm-Clashes
4	C	607	GOL	1	0
4	C	608	GOL	1	0

5.7 Other polymers [i](#)

There are no such residues in this entry.

5.8 Polymer linkage issues [i](#)

There are no chain breaks in this entry.

6 Fit of model and data

6.1 Protein, DNA and RNA chains

In the following table, the column labelled ‘#RSRZ > 2’ contains the number (and percentage) of RSRZ outliers, followed by percent RSRZ outliers for the chain as percentile scores relative to all X-ray entries and entries of similar resolution. The OWAB column contains the minimum, median, 95th percentile and maximum values of the occupancy-weighted average B-factor per residue. The column labelled ‘Q < 0.9’ lists the number of (and percentage) of residues with an average occupancy less than 0.9.

Mol	Chain	Analysed	<RSRZ>	#RSRZ>2	OWAB(Å ²)	Q<0.9
1	A	335/342 (97%)	-0.09	15 (4%) 33 32	23, 32, 51, 80	0
1	B	336/342 (98%)	-0.14	10 (2%) 50 49	22, 31, 50, 73	0
1	C	336/342 (98%)	-0.23	9 (2%) 54 53	21, 29, 48, 78	0
All	All	1007/1026 (98%)	-0.15	34 (3%) 45 44	21, 31, 50, 80	0

All (34) RSRZ outliers are listed below:

Mol	Chain	Res	Type	RSRZ
1	C	339	GLY	7.5
1	B	7	ALA	6.3
1	C	4	ALA	4.8
1	A	189	GLU	4.2
1	B	190	ASN	4.1
1	B	5	THR	4.0
1	A	192	LYS	3.8
1	B	4	ALA	3.7
1	A	190	ASN	3.5
1	B	6	ALA	3.5
1	C	166	LYS	3.4
1	B	189	GLU	3.1
1	B	339	GLY	2.9
1	B	168	LYS	2.8
1	B	197	GLU	2.8
1	A	7	ALA	2.5
1	A	191	GLY	2.5
1	A	102	ALA	2.5
1	A	166	LYS	2.4
1	C	54	ASP	2.4
1	A	33	GLU	2.3
1	A	340	THR	2.3
1	C	190	ASN	2.3

Continued on next page...

Continued from previous page...

Mol	Chain	Res	Type	RSRZ
1	A	325	GLU	2.3
1	C	165	GLY	2.3
1	A	34	GLY	2.2
1	C	10	ALA	2.2
1	A	6	ALA	2.2
1	A	99	PHE	2.2
1	C	192	LYS	2.2
1	C	9	ILE	2.2
1	B	191	GLY	2.1
1	A	146	VAL	2.0
1	A	188	ASP	2.0

6.2 Non-standard residues in protein, DNA, RNA chains [i](#)

There are no non-standard protein/DNA/RNA residues in this entry.

6.3 Carbohydrates [i](#)

There are no carbohydrates in this entry.

6.4 Ligands [i](#)

In the following table, the Atoms column lists the number of modelled atoms in the group and the number defined in the chemical component dictionary. The B-factors column lists the minimum, median, 95th percentile and maximum values of B factors of atoms in the group. The column labelled 'Q<0.9' lists the number of atoms with occupancy less than 0.9.

Mol	Type	Chain	Res	Atoms	RSCC	RSR	B-factors(Å ²)	Q<0.9
4	GOL	C	608	6/6	0.78	0.24	43,48,50,51	0
5	ACY	A	507	4/4	0.79	0.18	50,51,57,59	0
4	GOL	C	607	6/6	0.89	0.23	48,52,56,61	0
4	GOL	C	606	6/6	0.90	0.20	48,50,53,57	0
4	GOL	A	505	6/6	0.90	0.16	47,50,54,58	0
4	GOL	A	504	6/6	0.91	0.15	38,45,45,47	0
4	GOL	B	504	6/6	0.92	0.18	39,44,46,48	0
4	GOL	C	605	6/6	0.92	0.20	48,54,56,57	0
4	GOL	C	604	6/6	0.93	0.14	41,44,49,50	0
5	ACY	C	609	4/4	0.94	0.09	40,42,45,47	0
3	CL	C	601	1/1	0.95	0.14	53,53,53,53	0
4	GOL	A	506	6/6	0.95	0.14	37,44,47,52	0

Continued on next page...

Continued from previous page...

Mol	Type	Chain	Res	Atoms	RSCC	RSR	B-factors(\AA^2)	Q<0.9
3	CL	A	503	1/1	0.95	0.14	63,63,63,63	0
5	ACY	B	506	4/4	0.95	0.09	35,36,37,39	0
4	GOL	B	505	6/6	0.95	0.15	33,41,47,48	0
3	CL	B	503	1/1	0.97	0.08	49,49,49,49	0
2	CU	A	501	1/1	1.00	0.05	30,30,30,30	0
2	CU	C	603	1/1	1.00	0.02	27,27,27,27	0
2	CU	A	502	1/1	1.00	0.03	31,31,31,31	0
2	CU	C	602	1/1	1.00	0.04	29,29,29,29	0
2	CU	B	501	1/1	1.00	0.04	32,32,32,32	0
2	CU	B	502	1/1	1.00	0.02	30,30,30,30	0

6.5 Other polymers [i](#)

There are no such residues in this entry.