



Full wwPDB X-ray Structure Validation Report ⓘ

Dec 18, 2019 – 07:05 PM EST

PDB ID : 1D7C
Title : CYTOCHROME DOMAIN OF CELLOBIOSE DEHYDROGENASE, PH 4.6
Authors : Hallberg, B.M.; Bergfors, T.; Backbro, K.; Divne, C.
Deposited on : 1999-10-16
Resolution : 1.90 Å(reported)

This is a Full wwPDB X-ray Structure Validation Report for a publicly released PDB entry.

We welcome your comments at validation@mail.wwpdb.org

A user guide is available at

<https://www.wwpdb.org/validation/2017/XrayValidationReportHelp>

with specific help available everywhere you see the ⓘ symbol.

The following versions of software and data (see [references ⓘ](#)) were used in the production of this report:

MolProbity : 4.02b-467
Mogul : 1.8.0 (224370), CSD as540be (2019)
Xtriage (Phenix) : 1.13
EDS : 2.4
buster-report : 1.1.7 (2018)
Percentile statistics : 20171227.v01 (using entries in the PDB archive December 27th 2017)
Refmac : 5.8.0158
CCP4 : 7.0 (Gargrove)
Ideal geometry (proteins) : Engh & Huber (2001)
Ideal geometry (DNA, RNA) : Parkinson et al. (1996)
Validation Pipeline (wwPDB-VP) : 2.4

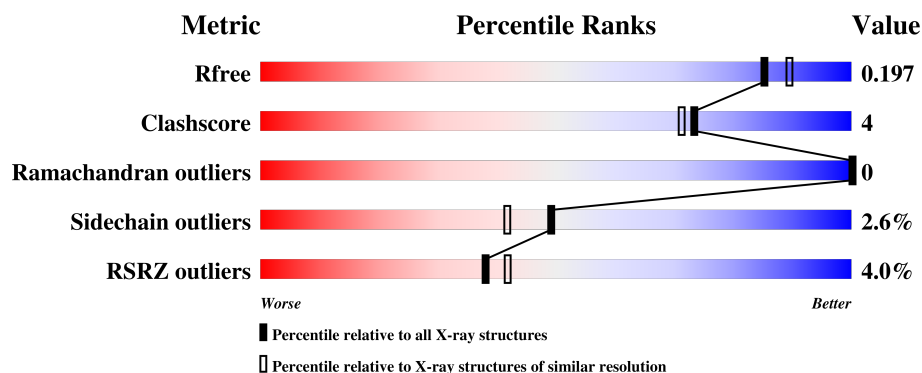
1 Overall quality at a glance

The following experimental techniques were used to determine the structure:

X-RAY DIFFRACTION

The reported resolution of this entry is 1.90 Å.

Percentile scores (ranging between 0-100) for global validation metrics of the entry are shown in the following graphic. The table shows the number of entries on which the scores are based.



Metric	Whole archive (#Entries)	Similar resolution (#Entries, resolution range(Å))
R_{free}	111664	5502 (1.90-1.90)
Clashscore	122126	6115 (1.90-1.90)
Ramachandran outliers	120053	6048 (1.90-1.90)
Sidechain outliers	120020	6048 (1.90-1.90)
RSRZ outliers	108989	5379 (1.90-1.90)

The table below summarises the geometric issues observed across the polymeric chains and their fit to the electron density. The red, orange, yellow and green segments on the lower bar indicate the fraction of residues that contain outliers for ≥ 3 , 2, 1 and 0 types of geometric quality criteria. A grey segment represents the fraction of residues that are not modelled. The numeric value for each fraction is indicated below the corresponding segment, with a dot representing fractions $\leq 5\%$. The upper red bar (where present) indicates the fraction of residues that have poor fit to the electron density. The numeric value is given above the bar.

Mol	Chain	Length	Quality of chain
1	A	190	<div> <div>3%</div> <div>89%</div> <div>11%</div> </div>
1	B	190	<div> <div>5%</div> <div>90%</div> <div>9%</div> </div>

The following table lists non-polymeric compounds, carbohydrate monomers and non-standard residues in protein, DNA, RNA chains that are outliers for geometric or electron-density-fit criteria:

Mol	Type	Chain	Res	Chirality	Geometry	Clashes	Electron density
3	BMA	A	303	-	-	-	X
3	BMA	B	303	-	-	-	X

2 Entry composition [i](#)

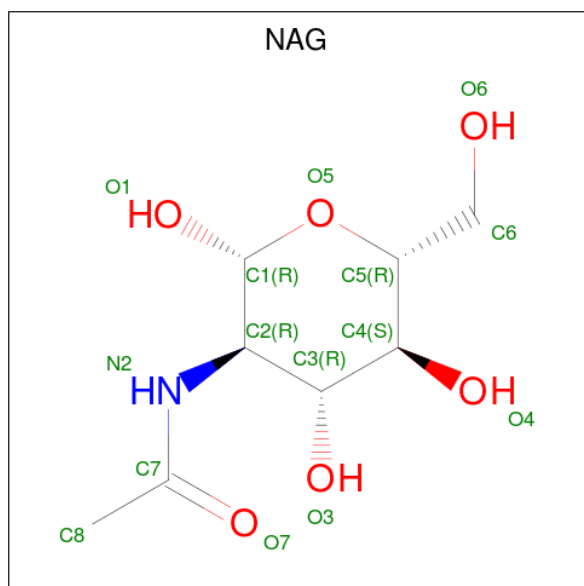
There are 7 unique types of molecules in this entry. The entry contains 3406 atoms, of which 0 are hydrogens and 0 are deuteriums.

In the tables below, the ZeroOcc column contains the number of atoms modelled with zero occupancy, the AltConf column contains the number of residues with at least one atom in alternate conformation and the Trace column contains the number of residues modelled with at most 2 atoms.

- Molecule 1 is a protein called CELLOBIOSE DEHYDROGENASE.

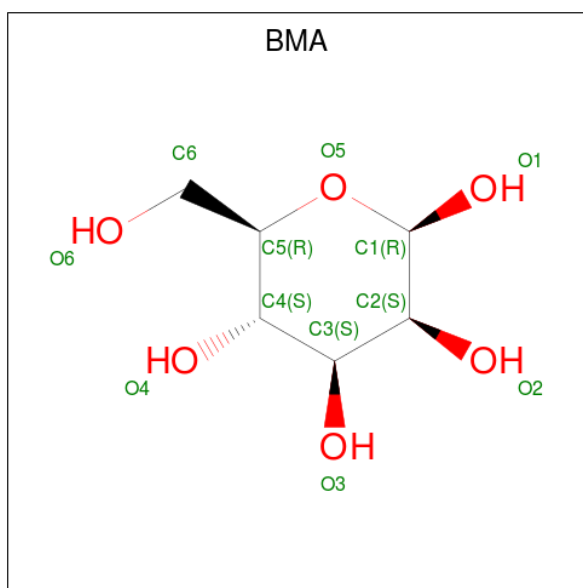
Mol	Chain	Residues	Atoms					ZeroOcc	AltConf	Trace
1	A	190	Total	C	N	O	S	0	0	0
			1440	914	233	290	3			
1	B	190	Total	C	N	O	S	0	0	0
			1440	914	233	290	3			

- Molecule 2 is N-ACETYL-D-GLUCOSAMINE (three-letter code: NAG) (formula: $C_8H_{15}NO_6$).



Mol	Chain	Residues	Atoms				ZeroOcc	AltConf
2	A	1	Total	C	N	O	0	0
			14	8	1	5		
2	A	1	Total	C	N	O	0	0
			14	8	1	5		
2	B	1	Total	C	N	O	0	0
			14	8	1	5		
2	B	1	Total	C	N	O	0	0
			14	8	1	5		

- Molecule 3 is BETA-D-MANNOSE (three-letter code: BMA) (formula: $C_6H_{12}O_6$).

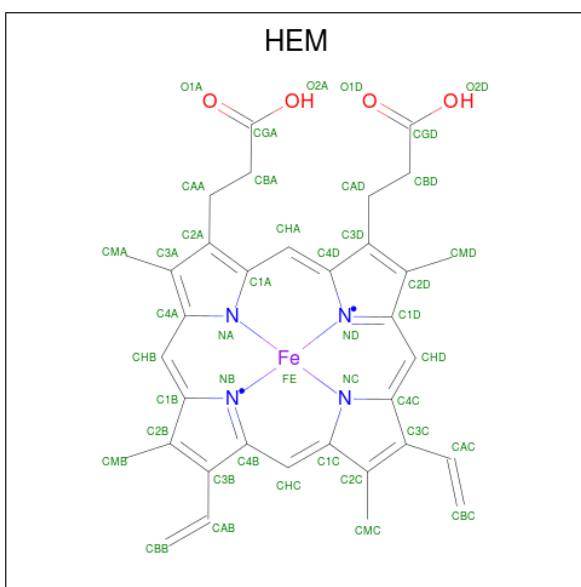


Mol	Chain	Residues	Atoms			ZeroOcc	AltConf
3	A	1	Total	C	O	0	0
			11	6	5		
3	B	1	Total	C	O	0	0
			11	6	5		

- Molecule 4 is CADMIUM ION (three-letter code: CD) (formula: Cd).

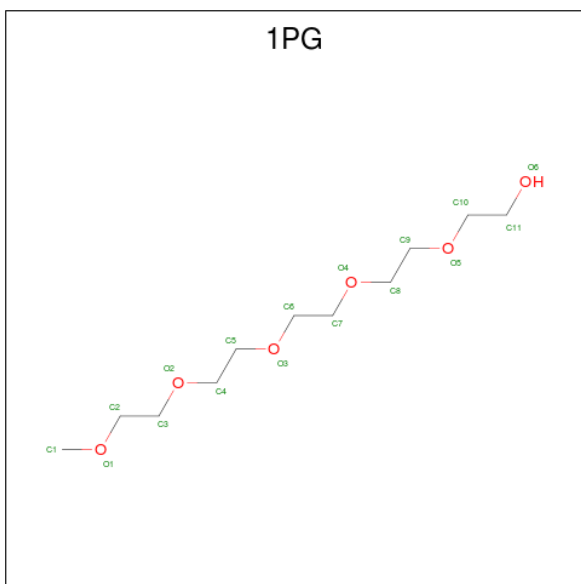
Mol	Chain	Residues	Atoms		ZeroOcc	AltConf
4	B	1	Total	Cd	0	0
			1	1		
4	A	4	Total	Cd	0	0
			4	4		

- Molecule 5 is PROTOPORPHYRIN IX CONTAINING FE (three-letter code: HEM) (formula: $C_{34}H_{32}FeN_4O_4$).



Mol	Chain	Residues	Atoms					ZeroOcc	AltConf
5	A	1	Total 43	C 34	Fe 1	N 4	O 4	0	0
5	B	1	Total 43	C 34	Fe 1	N 4	O 4	0	0

- Molecule 6 is 2-(2-{2-[2-(2-METHOXY-ETHOXY)-ETHOXY]-ETHOXY}-ETHOXY)-ETHANOL (three-letter code: 1PG) (formula: $C_{11}H_{24}O_6$).



Mol	Chain	Residues	Atoms			ZeroOcc	AltConf
6	B	1	Total	C	O	0	0
			17	11	6		

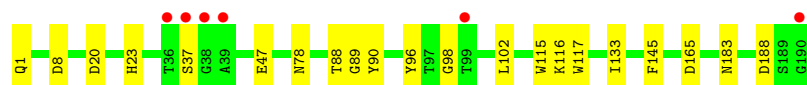
- Molecule 7 is water.

Mol	Chain	Residues	Atoms		ZeroOcc	AltConf
7	A	179	Total 179	O 179	0	0
7	B	161	Total 161	O 161	0	0

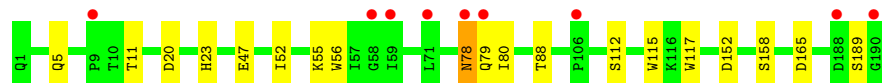
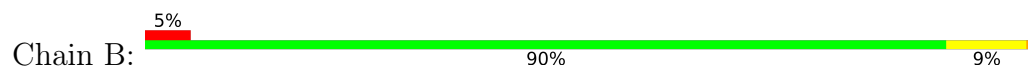
3 Residue-property plots [i](#)

These plots are drawn for all protein, RNA and DNA chains in the entry. The first graphic for a chain summarises the proportions of the various outlier classes displayed in the second graphic. The second graphic shows the sequence view annotated by issues in geometry and electron density. Residues are color-coded according to the number of geometric quality criteria for which they contain at least one outlier: green = 0, yellow = 1, orange = 2 and red = 3 or more. A red dot above a residue indicates a poor fit to the electron density ($RSRZ > 2$). Stretches of 2 or more consecutive residues without any outlier are shown as a green connector. Residues present in the sample, but not in the model, are shown in grey.

- Molecule 1: CELLOBIOSE DEHYDROGENASE



- Molecule 1: CELLOBIOSE DEHYDROGENASE



4 Data and refinement statistics

Property	Value	Source
Space group	P 65	Depositor
Cell constants a, b, c, α , β , γ	139.40Å 139.40Å 53.94Å 90.00° 90.00° 120.00°	Depositor
Resolution (Å)	25.00 – 1.90 24.64 – 1.90	Depositor EDS
% Data completeness (in resolution range)	97.4 (25.00-1.90) 97.5 (24.64-1.90)	Depositor EDS
R_{merge}	0.05	Depositor
R_{sym}	(Not available)	Depositor
$\langle I/\sigma(I) \rangle$ ¹	7.25 (at 1.90Å)	Xtriage
Refinement program	CNS, SHELXL-97	Depositor
R, R_{free}	0.187 , 0.220 0.166 , 0.197	Depositor DCC
R_{free} test set	2017 reflections (4.37%)	wwPDB-VP
Wilson B-factor (Å ²)	16.9	Xtriage
Anisotropy	0.384	Xtriage
Bulk solvent k_{sol} (e/Å ³), B_{sol} (Å ²)	0.38 , 60.6	EDS
L-test for twinning ²	$\langle L \rangle = 0.51$, $\langle L^2 \rangle = 0.34$	Xtriage
Estimated twinning fraction	0.022 for h,-h-k,-l	Xtriage
F_o, F_c correlation	0.95	EDS
Total number of atoms	3406	wwPDB-VP
Average B, all atoms (Å ²)	21.0	wwPDB-VP

Xtriage's analysis on translational NCS is as follows: *The largest off-origin peak in the Patterson function is 3.53% of the height of the origin peak. No significant pseudotranslation is detected.*

¹Intensities estimated from amplitudes.

²Theoretical values of $\langle |L| \rangle$, $\langle L^2 \rangle$ for acentric reflections are 0.5, 0.333 respectively for untwinned datasets, and 0.375, 0.2 for perfectly twinned datasets.

5 Model quality

5.1 Standard geometry

Bond lengths and bond angles in the following residue types are not validated in this section: BMA, NAG, 1PG, CD, HEM, PCA

The Z score for a bond length (or angle) is the number of standard deviations the observed value is removed from the expected value. A bond length (or angle) with $|Z| > 5$ is considered an outlier worth inspection. RMSZ is the root-mean-square of all Z scores of the bond lengths (or angles).

Mol	Chain	Bond lengths		Bond angles	
		RMSZ	$\# Z > 5$	RMSZ	$\# Z > 5$
1	A	0.38	0/1477	0.94	2/2030 (0.1%)
1	B	0.38	0/1477	0.93	3/2030 (0.1%)
All	All	0.38	0/2954	0.94	5/4060 (0.1%)

There are no bond length outliers.

All (5) bond angle outliers are listed below:

Mol	Chain	Res	Type	Atoms	Z	Observed(°)	Ideal(°)
1	A	115	TRP	CA-CB-CG	6.44	125.94	113.70
1	A	145	PHE	CB-CG-CD1	6.15	125.10	120.80
1	B	56	TRP	CA-CB-CG	5.57	124.28	113.70
1	B	88	THR	CA-C-N	5.48	127.15	116.20
1	B	115	TRP	CA-CB-CG	5.10	123.40	113.70

There are no chirality outliers.

There are no planarity outliers.

5.2 Too-close contacts

In the following table, the Non-H and H(model) columns list the number of non-hydrogen atoms and hydrogen atoms in the chain respectively. The H(added) column lists the number of hydrogen atoms added and optimized by MolProbity. The Clashes column lists the number of clashes within the asymmetric unit, whereas Symm-Clashes lists symmetry related clashes.

Mol	Chain	Non-H	H(model)	H(added)	Clashes	Symm-Clashes
1	A	1440	0	1317	8	1
1	B	1440	0	1317	12	0
2	A	28	0	24	1	0
2	B	28	0	24	0	0

Continued on next page...

Continued from previous page...

Mol	Chain	Non-H	H(model)	H(added)	Clashes	Symm-Clashes
3	A	11	0	10	1	0
3	B	11	0	10	0	0
4	A	4	0	0	0	0
4	B	1	0	0	0	0
5	A	43	0	30	0	0
5	B	43	0	30	0	0
6	B	17	0	23	1	0
7	A	179	0	0	1	0
7	B	161	0	0	3	1
All	All	3406	0	2785	21	1

The all-atom clashscore is defined as the number of clashes found per 1000 atoms (including hydrogen atoms). The all-atom clashscore for this structure is 4.

All (21) close contacts within the same asymmetric unit are listed below, sorted by their clash magnitude.

Atom-1	Atom-2	Interatomic distance (Å)	Clash overlap (Å)
1:B:78:ASN:HD22	1:B:78:ASN:H	1.32	0.78
1:B:78:ASN:H	1:B:78:ASN:ND2	1.97	0.63
1:B:52:ILE:HD13	1:B:112:SER:O	2.00	0.61
2:A:302:NAG:H4	3:A:303:BMA:O2	2.05	0.56
1:B:78:ASN:N	1:B:78:ASN:HD22	2.01	0.56
1:A:23:HIS:HE1	1:A:165:ASP:OD2	1.90	0.53
1:B:23:HIS:HD2	7:B:2618:HOH:O	1.91	0.53
1:A:1:PCA:N	6:B:402:1PG:H102	2.23	0.52
1:B:23:HIS:HE1	1:B:165:ASP:OD2	1.93	0.52
1:A:23:HIS:HD2	7:A:1618:HOH:O	1.93	0.51
1:B:55:LYS:HE2	7:B:2757:HOH:O	2.11	0.50
1:A:8:ASP:OD2	1:A:116:LYS:NZ	2.41	0.49
1:B:80:ILE:HG21	1:B:117:TRP:CD1	2.47	0.48
1:B:5:GLN:HG3	7:B:2751:HOH:O	2.14	0.48
1:A:89:GLY:O	1:A:90:TYR:HB2	2.14	0.47
1:A:96:TYR:CZ	1:A:98:GLY:HA3	2.50	0.47
1:A:47:GLU:HA	1:A:117:TRP:O	2.19	0.43
1:B:152:ASP:O	1:B:158:SER:HB2	2.20	0.41
1:B:11:THR:O	1:B:189:SER:HB3	2.20	0.41
1:A:183:ASN:HB3	1:A:188:ASP:HB2	2.02	0.41
1:B:47:GLU:HA	1:B:117:TRP:O	2.21	0.40

All (1) symmetry-related close contacts are listed below. The label for Atom-2 includes the symmetry operator and encoded unit-cell translations to be applied.

Atom-1	Atom-2	Interatomic distance (Å)	Clash overlap (Å)
1:A:88:THR:OG1	7:B:2706:HOH:O[5_555]	2.01	0.19

5.3 Torsion angles [i](#)

5.3.1 Protein backbone [i](#)

In the following table, the Percentiles column shows the percent Ramachandran outliers of the chain as a percentile score with respect to all X-ray entries followed by that with respect to entries of similar resolution.

The Analysed column shows the number of residues for which the backbone conformation was analysed, and the total number of residues.

Mol	Chain	Analysed	Favoured	Allowed	Outliers	Percentiles	
1	A	188/190 (99%)	183 (97%)	5 (3%)	0	100	100
1	B	188/190 (99%)	183 (97%)	5 (3%)	0	100	100
All	All	376/380 (99%)	366 (97%)	10 (3%)	0	100	100

There are no Ramachandran outliers to report.

5.3.2 Protein sidechains [i](#)

In the following table, the Percentiles column shows the percent sidechain outliers of the chain as a percentile score with respect to all X-ray entries followed by that with respect to entries of similar resolution.

The Analysed column shows the number of residues for which the sidechain conformation was analysed, and the total number of residues.

Mol	Chain	Analysed	Rotameric	Outliers	Percentiles	
1	A	152/152 (100%)	147 (97%)	5 (3%)	41	32
1	B	152/152 (100%)	149 (98%)	3 (2%)	58	53
All	All	304/304 (100%)	296 (97%)	8 (3%)	49	42

All (8) residues with a non-rotameric sidechain are listed below:

Mol	Chain	Res	Type
1	A	20	ASP
1	A	37	SER
1	A	78	ASN

Continued on next page...

Continued from previous page...

Mol	Chain	Res	Type
1	A	102	LEU
1	A	133	ILE
1	B	20	ASP
1	B	78	ASN
1	B	79	GLN

Some sidechains can be flipped to improve hydrogen bonding and reduce clashes. All (6) such sidechains are listed below:

Mol	Chain	Res	Type
1	A	23	HIS
1	A	78	ASN
1	B	23	HIS
1	B	78	ASN
1	B	182	GLN
1	B	186	ASN

5.3.3 RNA ⓘ

There are no RNA molecules in this entry.

5.4 Non-standard residues in protein, DNA, RNA chains ⓘ

2 non-standard protein/DNA/RNA residues are modelled in this entry.

In the following table, the Counts columns list the number of bonds (or angles) for which Mogul statistics could be retrieved, the number of bonds (or angles) that are observed in the model and the number of bonds (or angles) that are defined in the Chemical Component Dictionary. The Link column lists molecule types, if any, to which the group is linked. The Z score for a bond length (or angle) is the number of standard deviations the observed value is removed from the expected value. A bond length (or angle) with $|Z| > 2$ is considered an outlier worth inspection. RMSZ is the root-mean-square of all Z scores of the bond lengths (or angles).

Mol	Type	Chain	Res	Link	Bond lengths			Bond angles		
					Counts	RMSZ	$\# Z > 2$	Counts	RMSZ	$\# Z > 2$
1	PCA	A	1	1	8,8,9	1.39	1 (12%)	9,10,12	1.16	1 (11%)
1	PCA	B	1	1	8,8,9	1.55	1 (12%)	9,10,12	1.17	1 (11%)

In the following table, the Chirals column lists the number of chiral outliers, the number of chiral centers analysed, the number of these observed in the model and the number defined in the Chemical Component Dictionary. Similar counts are reported in the Torsion and Rings columns. '-' means no outliers of that kind were identified.

Mol	Type	Chain	Res	Link	Chirals	Torsions	Rings
1	PCA	A	1	1	-	0/0/11/13	0/1/1/1
1	PCA	B	1	1	-	0/0/11/13	0/1/1/1

All (2) bond length outliers are listed below:

Mol	Chain	Res	Type	Atoms	Z	Observed(Å)	Ideal(Å)
1	B	1	PCA	CA-C	3.29	1.54	1.50
1	A	1	PCA	CA-C	2.59	1.53	1.50

All (2) bond angle outliers are listed below:

Mol	Chain	Res	Type	Atoms	Z	Observed(°)	Ideal(°)
1	B	1	PCA	O-C-CA	-2.47	119.47	125.11
1	A	1	PCA	O-C-CA	-2.33	119.78	125.11

There are no chirality outliers.

There are no torsion outliers.

There are no ring outliers.

1 monomer is involved in 1 short contact:

Mol	Chain	Res	Type	Clashes	Symm-Clashes
1	A	1	PCA	1	0

5.5 Carbohydrates [i](#)

There are no carbohydrates in this entry.

5.6 Ligand geometry [i](#)

Of 14 ligands modelled in this entry, 5 are monoatomic - leaving 9 for Mogul analysis.

In the following table, the Counts columns list the number of bonds (or angles) for which Mogul statistics could be retrieved, the number of bonds (or angles) that are observed in the model and the number of bonds (or angles) that are defined in the Chemical Component Dictionary. The Link column lists molecule types, if any, to which the group is linked. The Z score for a bond length (or angle) is the number of standard deviations the observed value is removed from the expected value. A bond length (or angle) with $|Z| > 2$ is considered an outlier worth inspection. RMSZ is the root-mean-square of all Z scores of the bond lengths (or angles).

Mol	Type	Chain	Res	Link	Bond lengths			Bond angles		
					Counts	RMSZ	# Z > 2	Counts	RMSZ	# Z > 2
2	NAG	A	301	1,2	14,14,15	0.57	0	17,19,21	0.59	0
2	NAG	A	302	3,2	14,14,15	0.51	0	17,19,21	0.69	0
3	BMA	A	303	2	11,11,12	0.49	0	15,15,17	0.36	0
5	HEM	A	401	1,4	27,50,50	2.02	8 (29%)	17,82,82	1.65	4 (23%)
2	NAG	B	301	1,2	14,14,15	0.44	0	17,19,21	0.61	0
2	NAG	B	302	3,2	14,14,15	0.88	1 (7%)	17,19,21	1.30	3 (17%)
3	BMA	B	303	2	11,11,12	0.62	0	15,15,17	0.99	1 (6%)
5	HEM	B	401	1,4	27,50,50	2.06	10 (37%)	17,82,82	1.60	4 (23%)
6	1PG	B	402	-	16,16,16	1.32	1 (6%)	15,15,15	0.32	0

In the following table, the Chirals column lists the number of chiral outliers, the number of chiral centers analysed, the number of these observed in the model and the number defined in the Chemical Component Dictionary. Similar counts are reported in the Torsion and Rings columns. '-' means no outliers of that kind were identified.

Mol	Type	Chain	Res	Link	Chirals	Torsions	Rings
2	NAG	A	301	1,2	-	0/6/23/26	0/1/1/1
2	NAG	A	302	3,2	-	2/6/23/26	0/1/1/1
3	BMA	A	303	2	-	2/2/19/22	0/1/1/1
5	HEM	A	401	1,4	-	0/6/54/54	-
2	NAG	B	301	1,2	-	0/6/23/26	0/1/1/1
2	NAG	B	302	3,2	-	2/6/23/26	0/1/1/1
3	BMA	B	303	2	-	2/2/19/22	0/1/1/1
5	HEM	B	401	1,4	-	0/6/54/54	-
6	1PG	B	402	-	-	5/14/14/14	-

All (20) bond length outliers are listed below:

Mol	Chain	Res	Type	Atoms	Z	Observed(Å)	Ideal(Å)
5	A	401	HEM	C3C-CAC	4.20	1.56	1.47
5	B	401	HEM	C3C-CAC	4.03	1.56	1.47
5	B	401	HEM	C3B-CAB	3.97	1.56	1.47
5	A	401	HEM	C3B-CAB	3.68	1.55	1.47
5	B	401	HEM	CBB-CAB	3.63	1.53	1.29
5	A	401	HEM	CBB-CAB	3.61	1.53	1.29
5	A	401	HEM	CBC-CAC	3.61	1.53	1.29
5	B	401	HEM	CBC-CAC	3.53	1.52	1.29
5	A	401	HEM	C3C-C2C	-3.06	1.36	1.40
5	B	401	HEM	C3C-C2C	-2.93	1.36	1.40
5	B	401	HEM	CAA-C2A	2.68	1.56	1.52

Continued on next page...

Continued from previous page...

Mol	Chain	Res	Type	Atoms	Z	Observed(Å)	Ideal(Å)
5	A	401	HEM	CAA-C2A	2.57	1.56	1.52
5	A	401	HEM	C1C-C2C	2.49	1.48	1.42
6	B	402	1PG	O1-C1	2.48	1.54	1.42
2	B	302	NAG	C1-C2	2.46	1.56	1.52
5	B	401	HEM	C1D-ND	2.44	1.41	1.36
5	B	401	HEM	C1C-C2C	2.27	1.47	1.42
5	B	401	HEM	CMC-C2C	2.26	1.57	1.51
5	A	401	HEM	C3B-C2B	-2.24	1.37	1.40
5	B	401	HEM	C3B-C2B	-2.06	1.37	1.40

All (12) bond angle outliers are listed below:

Mol	Chain	Res	Type	Atoms	Z	Observed(°)	Ideal(°)
5	A	401	HEM	CMB-C2B-C3B	3.67	131.68	124.80
5	A	401	HEM	CMD-C2D-C1D	-3.35	123.31	128.46
3	B	303	BMA	C1-C2-C3	3.20	113.59	109.66
5	B	401	HEM	CMD-C2D-C1D	-3.12	123.66	128.46
2	B	302	NAG	C4-C3-C2	-3.11	106.46	111.02
5	B	401	HEM	CMA-C3A-C4A	-2.96	123.91	128.46
5	A	401	HEM	CMC-C2C-C3C	2.85	130.15	124.80
5	B	401	HEM	CMB-C2B-C3B	2.84	130.12	124.80
2	B	302	NAG	O4-C4-C3	2.33	115.75	110.34
5	B	401	HEM	CMC-C2C-C3C	2.25	129.02	124.80
5	A	401	HEM	CMD-C2D-C3D	2.10	128.89	124.94
2	B	302	NAG	C3-C4-C5	-2.02	106.59	110.23

There are no chirality outliers.

All (13) torsion outliers are listed below:

Mol	Chain	Res	Type	Atoms
3	B	303	BMA	C4-C5-C6-O6
2	A	302	NAG	C4-C5-C6-O6
3	A	303	BMA	O5-C5-C6-O6
2	A	302	NAG	O5-C5-C6-O6
3	B	303	BMA	O5-C5-C6-O6
6	B	402	1PG	O2-C4-C5-O3
2	B	302	NAG	C4-C5-C6-O6
3	A	303	BMA	C4-C5-C6-O6
6	B	402	1PG	O5-C10-C11-O6
6	B	402	1PG	O4-C8-C9-O5
2	B	302	NAG	O5-C5-C6-O6
6	B	402	1PG	C6-C7-O4-C8

Continued on next page...

Continued from previous page...

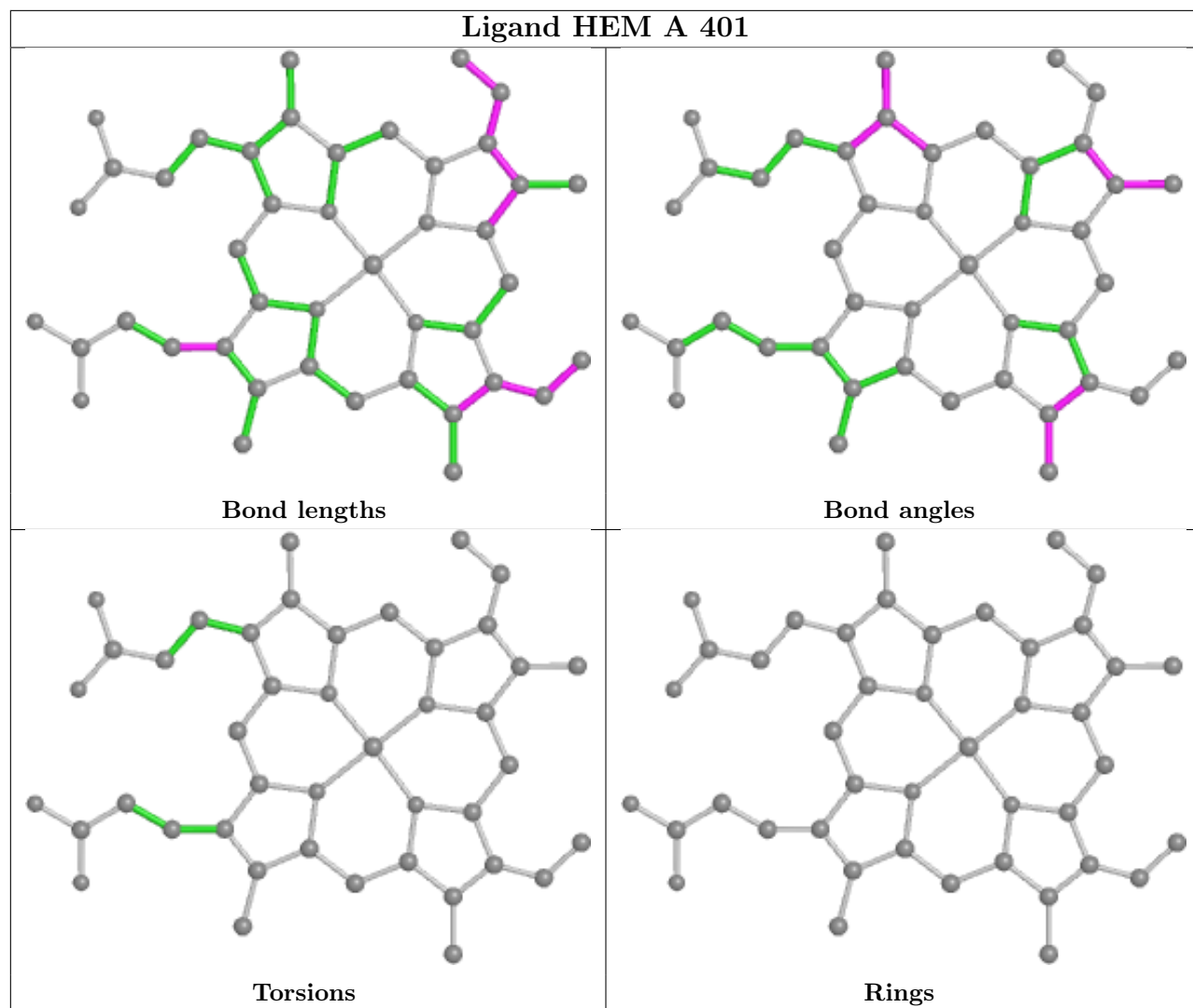
Mol	Chain	Res	Type	Atoms
6	B	402	1PG	C8-C9-O5-C10

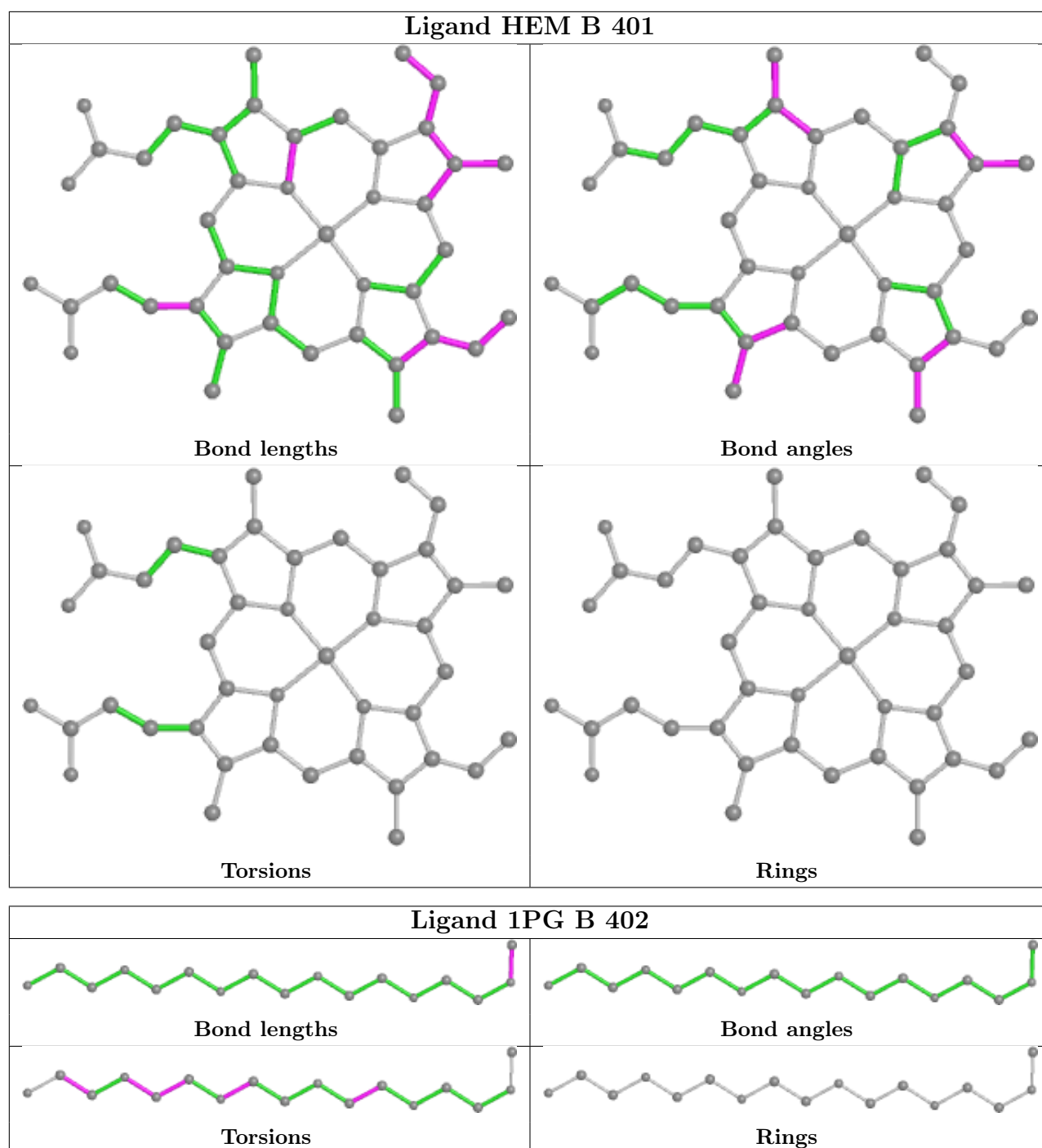
There are no ring outliers.

3 monomers are involved in 2 short contacts:

Mol	Chain	Res	Type	Clashes	Symm-Clashes
2	A	302	NAG	1	0
3	A	303	BMA	1	0
6	B	402	1PG	1	0

The following is a two-dimensional graphical depiction of Mogul quality analysis of bond lengths, bond angles, torsion angles, and ring geometry for all instances of the Ligand of Interest. In addition, ligands with molecular weight > 250 and outliers as shown on the validation Tables will also be included. For torsion angles, if less than 5% of the Mogul distribution of torsion angles is within 10 degrees of the torsion angle in question, then that torsion angle is considered an outlier. Any bond that is central to one or more torsion angles identified as an outlier by Mogul will be highlighted in the graph. For rings, the root-mean-square deviation (RMSD) between the ring in question and similar rings identified by Mogul is calculated over all ring torsion angles. If the average RMSD is greater than 60 degrees and the minimal RMSD between the ring in question and any Mogul-identified rings is also greater than 60 degrees, then that ring is considered an outlier. The outliers are highlighted in purple. The color gray indicates Mogul did not find sufficient equivalents in the CSD to analyse the geometry.





5.7 Other polymers [i](#)

There are no such residues in this entry.

5.8 Polymer linkage issues [i](#)

There are no chain breaks in this entry.

6 Fit of model and data [i](#)

6.1 Protein, DNA and RNA chains [i](#)

In the following table, the column labelled ‘#RSRZ > 2’ contains the number (and percentage) of RSRZ outliers, followed by percent RSRZ outliers for the chain as percentile scores relative to all X-ray entries and entries of similar resolution. The OWAB column contains the minimum, median, 95th percentile and maximum values of the occupancy-weighted average B-factor per residue. The column labelled ‘Q < 0.9’ lists the number of (and percentage) of residues with an average occupancy less than 0.9.

Mol	Chain	Analysed	<RSRZ>	#RSRZ > 2			OWAB(Å ²)	Q < 0.9
1	A	189/190 (99%)	-0.04	6 (3%)	47	51	11, 17, 35, 68	0
1	B	189/190 (99%)	0.04	9 (4%)	30	34	12, 18, 34, 68	0
All	All	378/380 (99%)	-0.00	15 (3%)	38	42	11, 18, 35, 68	0

All (15) RSRZ outliers are listed below:

Mol	Chain	Res	Type	RSRZ
1	A	37	SER	5.8
1	A	190	GLY	4.6
1	A	36	THR	4.3
1	A	38	GLY	3.7
1	B	59	ILE	3.3
1	B	188	ASP	3.2
1	B	9	PRO	2.9
1	B	190	GLY	2.9
1	B	79	GLN	2.6
1	B	71	LEU	2.3
1	B	106	PRO	2.2
1	B	58	GLY	2.2
1	A	39	ALA	2.1
1	B	78	ASN	2.1
1	A	99	THR	2.0

6.2 Non-standard residues in protein, DNA, RNA chains [i](#)

In the following table, the Atoms column lists the number of modelled atoms in the group and the number defined in the chemical component dictionary. The B-factors column lists the minimum, median, 95th percentile and maximum values of B factors of atoms in the group. The column labelled ‘Q < 0.9’ lists the number of atoms with occupancy less than 0.9.

Mol	Type	Chain	Res	Atoms	RSCC	RSR	B-factors(\AA^2)	Q<0.9
1	PCA	B	1	8/9	0.96	0.08	12,14,17,18	0
1	PCA	A	1	8/9	0.98	0.09	13,15,16,18	0

6.3 Carbohydrates [i](#)

There are no carbohydrates in this entry.

6.4 Ligands [i](#)

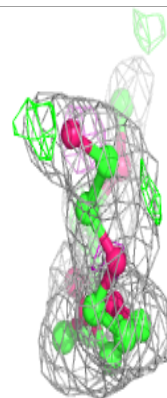
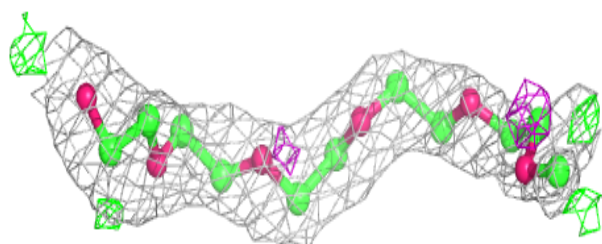
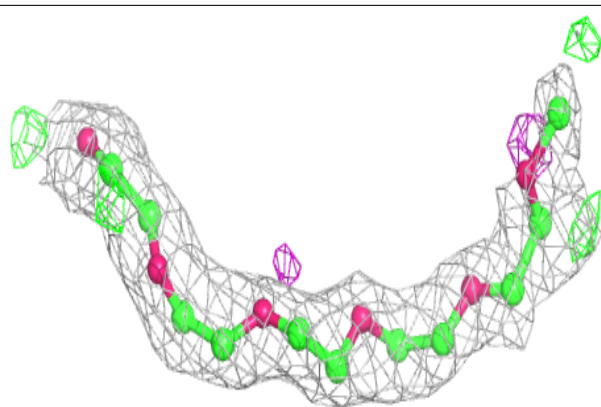
In the following table, the Atoms column lists the number of modelled atoms in the group and the number defined in the chemical component dictionary. The B-factors column lists the minimum, median, 95th percentile and maximum values of B factors of atoms in the group. The column labelled 'Q< 0.9' lists the number of atoms with occupancy less than 0.9.

Mol	Type	Chain	Res	Atoms	RSCC	RSR	B-factors(\AA^2)	Q<0.9
3	BMA	B	303	11/12	0.53	0.47	72,104,114,114	0
4	CD	A	503	1/1	0.76	0.36	81,81,81,81	0
3	BMA	A	303	11/12	0.77	0.45	34,61,78,80	0
6	1PG	B	402	17/17	0.85	0.16	34,43,59,64	0
2	NAG	A	302	14/15	0.87	0.22	30,37,51,55	0
2	NAG	B	301	14/15	0.90	0.17	32,37,62,65	0
2	NAG	B	302	14/15	0.90	0.27	32,46,75,81	0
4	CD	A	504	1/1	0.92	0.18	68,68,68,68	0
2	NAG	A	301	14/15	0.94	0.08	14,20,27,31	0
5	HEM	A	401	43/43	0.97	0.10	7,13,20,22	0
5	HEM	B	401	43/43	0.97	0.09	7,14,18,22	0
4	CD	A	501	1/1	0.99	0.05	17,17,17,17	0
4	CD	B	502	1/1	1.00	0.04	18,18,18,18	0
4	CD	A	502	1/1	1.00	0.04	16,16,16,16	0

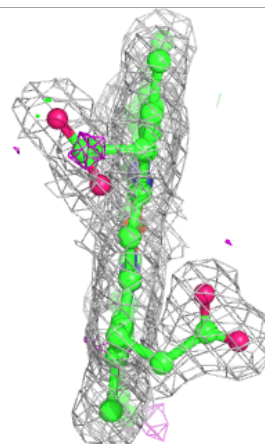
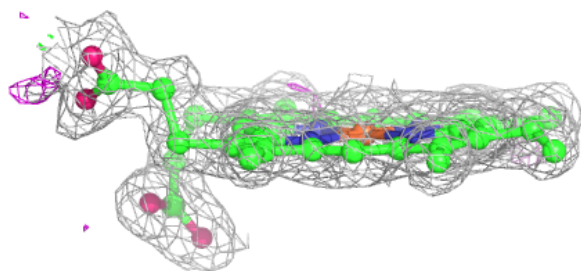
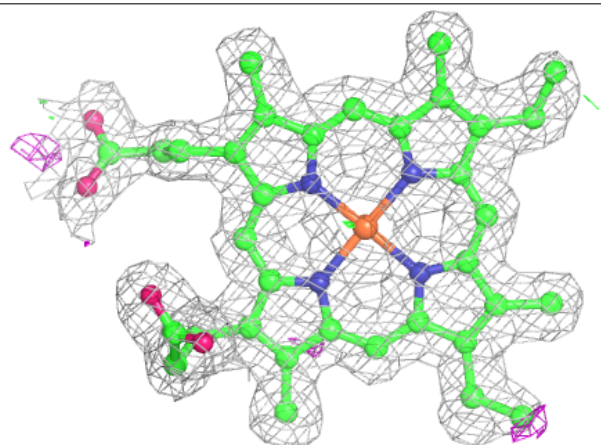
The following is a graphical depiction of the model fit to experimental electron density of all instances of the Ligand of Interest. In addition, ligands with molecular weight > 250 and outliers as shown on the geometry validation Tables will also be included. Each fit is shown from different orientation to approximate a three-dimensional view.

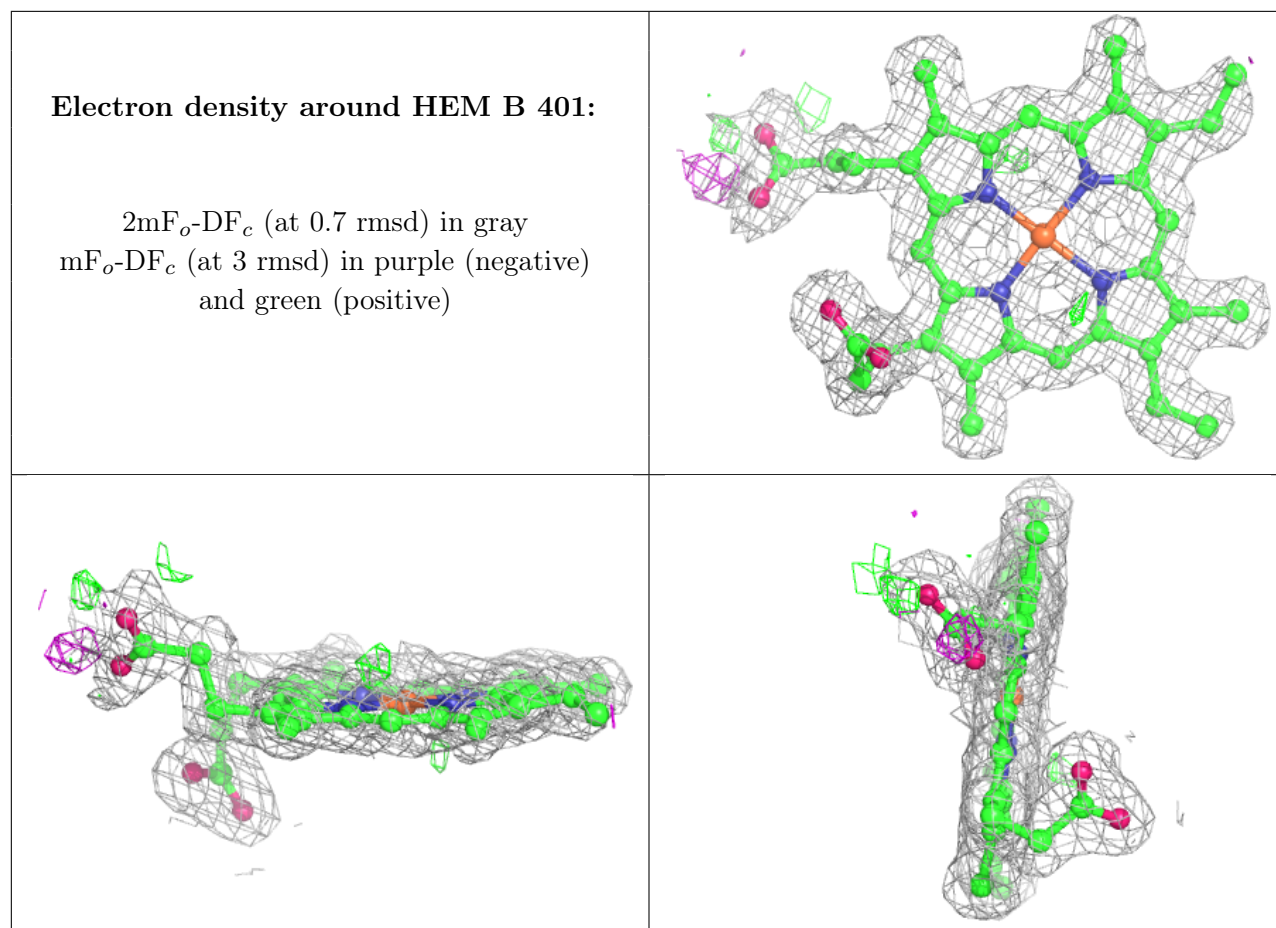
Electron density around 1PG B 402:

$2mF_o-DF_c$ (at 0.7 rmsd) in gray
 mF_o-DF_c (at 3 rmsd) in purple (negative)
and green (positive)

**Electron density around HEM A 401:**

$2mF_o-DF_c$ (at 0.7 rmsd) in gray
 mF_o-DF_c (at 3 rmsd) in purple (negative)
and green (positive)





6.5 Other polymers [i](#)

There are no such residues in this entry.