



# wwPDB X-ray Structure Validation Summary Report ⓘ

Mar 8, 2018 – 11:24 pm GMT

PDB ID : 4D8C  
Title : Crystal Structure of Human Beta Secretase in Complex with NVP-BXD552,  
derived from a co-crystallization experiment  
Authors : Rondeau, J.M.; Bourgier, E.  
Deposited on : 2012-01-10  
Resolution : 2.07 Å(reported)

This is a wwPDB X-ray Structure Validation Summary Report for a publicly released PDB entry.

We welcome your comments at [validation@mail.wwpdb.org](mailto:validation@mail.wwpdb.org)

A user guide is available at

<https://www.wwpdb.org/validation/2017/XrayValidationReportHelp>

with specific help available everywhere you see the ⓘ symbol.

---

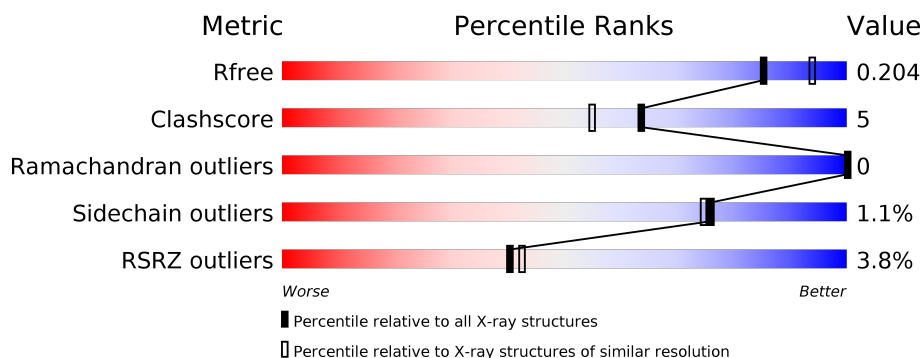
The following versions of software and data (see [references ⓘ](#)) were used in the production of this report:

MolProbity : 4.02b-467  
Mogul : 1.7.3 (157068), CSD as539be (2018)  
Xtriage (Phenix) : 1.13  
EDS : trunk30967  
Percentile statistics : 20171227.v01 (using entries in the PDB archive December 27th 2017)  
Refmac : 5.8.0158  
CCP4 : 7.0 (Gargrove)  
Ideal geometry (proteins) : Engh & Huber (2001)  
Ideal geometry (DNA, RNA) : Parkinson et al. (1996)  
Validation Pipeline (wwPDB-VP) : trunk30967

**i**




## X-RAY DIFFRACTION

Percentile scores (ranging between 0-100) for global validation metrics of the entry are shown in the following graphic. The table shows the number of entries on which the scores are based.



<b>Metric</b>	<b>Whole archive (#Entries)</b>	<b>Similar resolution (#Entries, resolution range(Å))</b>
R <sub>free</sub>	111664	2250 (2.08-2.04)
Clashscore	122126	2358 (2.08-2.04)
Ramachandran outliers	120053	2339 (2.08-2.04)
Sidechain outliers	120020	2339 (2.08-2.04)
RSRZ outliers	108989	2211 (2.08-2.04)

The table below summarises the geometric issues observed across the polymeric chains and their fit to the electron density. The red, orange, yellow and green segments on the lower bar indicate the fraction of residues that contain outliers for  $\geq 3$ , 2, 1 and 0 types of geometric quality criteria. A grey segment represents the fraction of residues that are not modelled. The numeric value for each fraction is indicated below the corresponding segment, with a dot representing fractions  $\leq 5\%$ . The upper red bar (where present) indicates the fraction of residues that have poor fit to the electron density. The numeric value is given above the bar.

Mol	Chain	Length	Quality of chain
1	A	402	 <p>2% 84% 8% 6%</p>
1	B	402	 <p>4% 85% 8% 6%</p>
1	C	402	 <p>4% 84% 10% 5%</p>

## 2 Entry composition

There are 4 unique types of molecules in this entry. The entry contains 9759 atoms, of which 0 are hydrogens and 0 are deuteriums.

In the tables below, the ZeroOcc column contains the number of atoms modelled with zero occupancy, the AltConf column contains the number of residues with at least one atom in alternate conformation and the Trace column contains the number of residues modelled with at most 2 atoms.

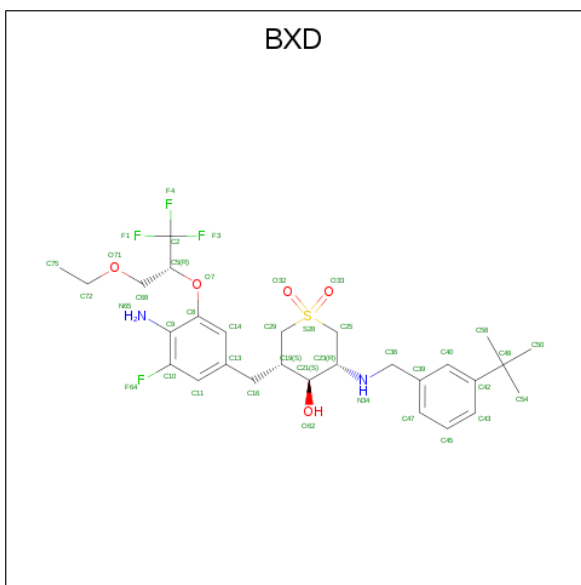
- Molecule 1 is a protein called Beta-secretase 1.

Mol	Chain	Residues	Atoms					ZeroOcc	AltConf	Trace
1	A	377	Total	C	N	O	S	0	0	0
			2966	1898	493	561	14			
1	B	377	Total	C	N	O	S	0	0	0
			2966	1898	493	561	14			
1	C	381	Total	C	N	O	S	0	0	0
			2993	1917	497	565	14			

There are 6 discrepancies between the modelled and reference sequences:

Chain	Residue	Modelled	Actual	Comment	Reference
A	-15	GLY	-	EXPRESSION TAG	UNP P56817
A	-14	PRO	-	EXPRESSION TAG	UNP P56817
B	-15	GLY	-	EXPRESSION TAG	UNP P56817
B	-14	PRO	-	EXPRESSION TAG	UNP P56817
C	-15	GLY	-	EXPRESSION TAG	UNP P56817
C	-14	PRO	-	EXPRESSION TAG	UNP P56817

- Molecule 2 is (3S,4S,5R)-3-(4-amino-3-{[(2R)-3-ethoxy-1,1,1-trifluoropropan-2-yl]oxy}-5-fluorobenzyl)-5-[(3-tert-butylbenzyl)amino]tetrahydro-2H-thiopyran-4-ol 1,1-dioxide (three-letter code: BXD) (formula: C<sub>28</sub>H<sub>38</sub>F<sub>4</sub>N<sub>2</sub>O<sub>5</sub>S).



Mol	Chain	Residues	Atoms						ZeroOcc	AltConf
2	A	1	Total	C	F	N	O	S	0	0
			40	28	4	2	5	1		
2	B	1	Total	C	F	N	O	S	0	0
			40	28	4	2	5	1		
2	C	1	Total	C	F	N	O	S	0	0
			40	28	4	2	5	1		

- Molecule 3 is SULFATE ION (three-letter code: SO<sub>4</sub>) (formula: O<sub>4</sub>S).



Mol	Chain	Residues	Atoms		ZeroOcc	AltConf
3	B	1	Total	O S	0	0
			5	4 1		

*Continued on next page...*

*Continued from previous page...*

Mol	Chain	Residues	Atoms			ZeroOcc	AltConf
3	C	1	Total	O	S	0	0
			5	4	1		

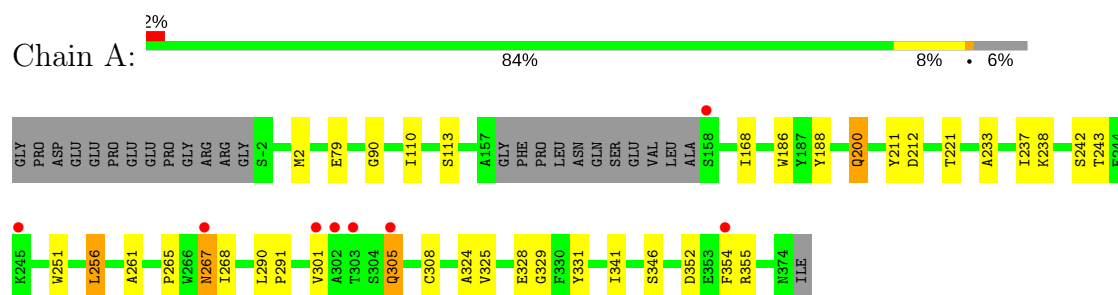
- Molecule 4 is water.

Mol	Chain	Residues	Atoms		ZeroOcc	AltConf
4	A	244	Total	O	0	0
			244	244		
4	B	215	Total	O	0	0
			215	215		
4	C	245	Total	O	0	0
			245	245		

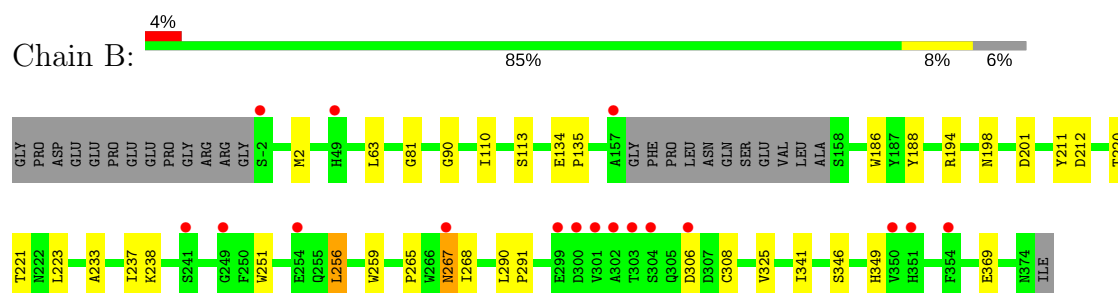
### 3 Residue-property plots

These plots are drawn for all protein, RNA and DNA chains in the entry. The first graphic for a chain summarises the proportions of the various outlier classes displayed in the second graphic. The second graphic shows the sequence view annotated by issues in geometry and electron density. Residues are color-coded according to the number of geometric quality criteria for which they contain at least one outlier: green = 0, yellow = 1, orange = 2 and red = 3 or more. A red dot above a residue indicates a poor fit to the electron density ( $RSRZ > 2$ ). Stretches of 2 or more consecutive residues without any outlier are shown as a green connector. Residues present in the sample, but not in the model, are shown in grey.

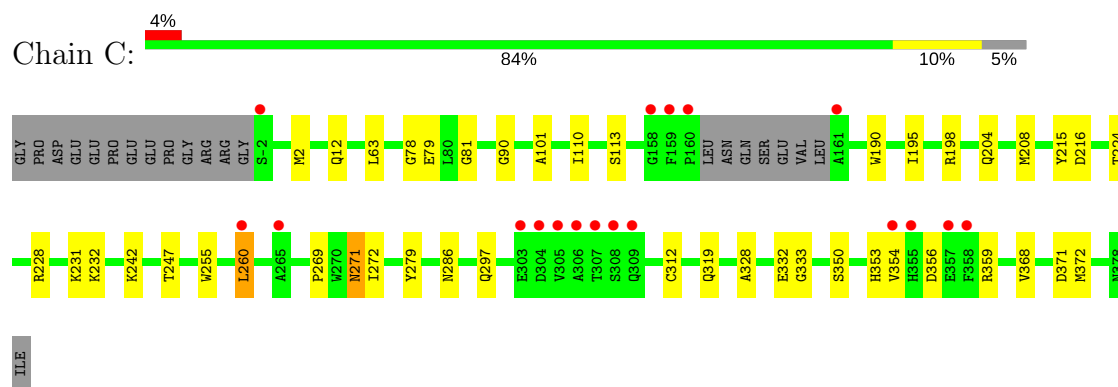
#### • Molecule 1: Beta-secretase 1



#### • Molecule 1: Beta-secretase 1



#### • Molecule 1: Beta-secretase 1



## 4 Data and refinement statistics

Property	Value	Source
Space group	P 1 21 1	Depositor
Cell constants a, b, c, $\alpha$ , $\beta$ , $\gamma$	82.13Å 103.50Å 100.41Å 90.00° 103.98° 90.00°	Depositor
Resolution (Å)	70.95 – 2.07 70.95 – 2.07	Depositor EDS
% Data completeness (in resolution range)	99.8 (70.95-2.07) 99.9 (70.95-2.07)	Depositor EDS
$R_{merge}$	0.06	Depositor
$R_{sym}$	(Not available)	Depositor
$\langle I/\sigma(I) \rangle$ <sup>1</sup>	3.84 (at 2.07Å)	Xtriage
Refinement program	CNS, CNX 2002	Depositor
R, $R_{free}$	0.191 , 0.211 0.184 , 0.204	Depositor DCC
$R_{free}$ test set	9956 reflections (10.04%)	wwPDB-VP
Wilson B-factor (Å <sup>2</sup> )	33.8	Xtriage
Anisotropy	0.491	Xtriage
Bulk solvent $k_{sol}$ (e/Å <sup>3</sup> ), $B_{sol}$ (Å <sup>2</sup> )	0.37 , 53.0	EDS
L-test for twinning <sup>2</sup>	$\langle  L  \rangle = 0.48$ , $\langle L^2 \rangle = 0.31$	Xtriage
Estimated twinning fraction	No twinning to report.	Xtriage
$F_o, F_c$ correlation	0.96	EDS
Total number of atoms	9759	wwPDB-VP
Average B, all atoms (Å <sup>2</sup> )	40.0	wwPDB-VP

Xtriage's analysis on translational NCS is as follows: *The largest off-origin peak in the Patterson function is 4.18% of the height of the origin peak. No significant pseudotranslation is detected.*

<sup>1</sup>Intensities estimated from amplitudes.

<sup>2</sup>Theoretical values of  $\langle |L| \rangle$ ,  $\langle L^2 \rangle$  for acentric reflections are 0.5, 0.333 respectively for untwinned datasets, and 0.375, 0.2 for perfectly twinned datasets.

## 5 Model quality [i](#)

### 5.1 Standard geometry [i](#)

Bond lengths and bond angles in the following residue types are not validated in this section: SO4, BXD

The Z score for a bond length (or angle) is the number of standard deviations the observed value is removed from the expected value. A bond length (or angle) with  $|Z| > 5$  is considered an outlier worth inspection. RMSZ is the root-mean-square of all Z scores of the bond lengths (or angles).

Mol	Chain	Bond lengths		Bond angles	
		RMSZ	# Z  >5	RMSZ	# Z  >5
1	A	0.30	0/3041	0.48	0/4133
1	B	0.30	0/3041	0.48	0/4133
1	C	0.30	0/3070	0.50	2/4173 (0.0%)
All	All	0.30	0/9152	0.48	2/12439 (0.0%)

There are no bond length outliers.

All (2) bond angle outliers are listed below:

Mol	Chain	Res	Type	Atoms	Z	Observed(°)	Ideal(°)
1	C	228	ARG	NE-CZ-NH2	7.57	124.09	120.30
1	C	228	ARG	NH1-CZ-NH2	-5.69	113.14	119.40

There are no chirality outliers.

There are no planarity outliers.

### 5.2 Too-close contacts [i](#)

In the following table, the Non-H and H(model) columns list the number of non-hydrogen atoms and hydrogen atoms in the chain respectively. The H(added) column lists the number of hydrogen atoms added and optimized by MolProbity. The Clashes column lists the number of clashes within the asymmetric unit, whereas Symm-Clashes lists symmetry related clashes.

Mol	Chain	Non-H	H(model)	H(added)	Clashes	Symm-Clashes
1	A	2966	0	2878	28	0
1	B	2966	0	2878	25	0
1	C	2993	0	2902	31	0
2	A	40	0	38	0	0
2	B	40	0	38	1	0
2	C	40	0	38	1	0

*Continued on next page...*



*Continued from previous page...*

Mol	Chain	Non-H	H(model)	H(added)	Clashes	Symm-Clashes
3	B	5	0	0	0	0
3	C	5	0	0	0	0
4	A	244	0	0	2	0
4	B	215	0	0	2	0
4	C	245	0	0	4	0
All	All	9759	0	8772	82	0

The all-atom clashscore is defined as the number of clashes found per 1000 atoms (including hydrogen atoms). The all-atom clashscore for this structure is 5.

The worst 5 of 82 close contacts within the same asymmetric unit are listed below, sorted by their clash magnitude.

Atom-1	Atom-2	Interatomic distance (Å)	Clash overlap (Å)
1:B:267:ASN:N	1:B:267:ASN:HD22	1.59	1.00
1:B:267:ASN:ND2	1:B:267:ASN:H	1.59	1.00
1:C:271:ASN:H	1:C:271:ASN:HD22	1.07	0.98
1:A:267:ASN:H	1:A:267:ASN:HD22	1.02	0.98
1:A:267:ASN:ND2	1:A:267:ASN:H	1.73	0.85

There are no symmetry-related clashes.

## 5.3 Torsion angles [i](#)

### 5.3.1 Protein backbone [i](#)

In the following table, the Percentiles column shows the percent Ramachandran outliers of the chain as a percentile score with respect to all X-ray entries followed by that with respect to entries of similar resolution.

The Analysed column shows the number of residues for which the backbone conformation was analysed, and the total number of residues.

Mol	Chain	Analysed	Favoured	Allowed	Outliers	Percentiles	
1	A	373/402 (93%)	364 (98%)	9 (2%)	0	100	100
1	B	373/402 (93%)	362 (97%)	11 (3%)	0	100	100
1	C	377/402 (94%)	369 (98%)	8 (2%)	0	100	100
All	All	1123/1206 (93%)	1095 (98%)	28 (2%)	0	100	100

There are no Ramachandran outliers to report.

### 5.3.2 Protein sidechains [i](#)

In the following table, the Percentiles column shows the percent sidechain outliers of the chain as a percentile score with respect to all X-ray entries followed by that with respect to entries of similar resolution.

The Analysed column shows the number of residues for which the sidechain conformation was analysed, and the total number of residues.

Mol	Chain	Analysed	Rotameric	Outliers	Percentiles	
1	A	322/342 (94%)	317 (98%)	5 (2%)	65	62
1	B	322/342 (94%)	319 (99%)	3 (1%)	81	80
1	C	324/342 (95%)	321 (99%)	3 (1%)	81	80
All	All	968/1026 (94%)	957 (99%)	11 (1%)	76	74

5 of 11 residues with a non-rotameric sidechain are listed below:

Mol	Chain	Res	Type
1	A	305	GLN
1	B	186	TRP
1	C	190	TRP
1	A	267	ASN
1	B	267	ASN

Some sidechains can be flipped to improve hydrogen bonding and reduce clashes. 5 of 10 such sidechains are listed below:

Mol	Chain	Res	Type
1	B	114	ASN
1	B	267	ASN
1	B	315	GLN
1	A	315	GLN
1	B	282	ASN

### 5.3.3 RNA [i](#)

There are no RNA molecules in this entry.

## 5.4 Non-standard residues in protein, DNA, RNA chains [i](#)

There are no non-standard protein/DNA/RNA residues in this entry.

## 5.5 Carbohydrates [i](#)

There are no carbohydrates in this entry.

## 5.6 Ligand geometry [i](#)

5 ligands are modelled in this entry.

In the following table, the Counts columns list the number of bonds (or angles) for which Mogul statistics could be retrieved, the number of bonds (or angles) that are observed in the model and the number of bonds (or angles) that are defined in the Chemical Component Dictionary. The Link column lists molecule types, if any, to which the group is linked. The Z score for a bond length (or angle) is the number of standard deviations the observed value is removed from the expected value. A bond length (or angle) with  $|Z| > 2$  is considered an outlier worth inspection. RMSZ is the root-mean-square of all Z scores of the bond lengths (or angles).

Mol	Type	Chain	Res	Link	Bond lengths			Bond angles		
					Counts	RMSZ	# Z  > 2	Counts	RMSZ	# Z  > 2
2	BXD	A	501	-	39,42,42	1.74	9 (23%)	51,63,63	1.19	4 (7%)
2	BXD	B	501	-	39,42,42	1.76	9 (23%)	51,63,63	1.21	4 (7%)
3	SO4	B	502	-	4,4,4	0.33	0	6,6,6	0.11	0
2	BXD	C	401	-	39,42,42	1.73	10 (25%)	51,63,63	1.17	5 (9%)
3	SO4	C	402	-	4,4,4	0.39	0	6,6,6	0.12	0

In the following table, the Chirals column lists the number of chiral outliers, the number of chiral centers analysed, the number of these observed in the model and the number defined in the Chemical Component Dictionary. Similar counts are reported in the Torsion and Rings columns. '-' means no outliers of that kind were identified.

Mol	Type	Chain	Res	Link	Chirals	Torsions	Rings
2	BXD	A	501	-	-	0/29/47/47	0/3/3/3
2	BXD	B	501	-	-	0/29/47/47	0/3/3/3
3	SO4	B	502	-	-	0/0/0/0	0/0/0/0
2	BXD	C	401	-	-	0/29/47/47	0/3/3/3
3	SO4	C	402	-	-	0/0/0/0	0/0/0/0

The worst 5 of 28 bond length outliers are listed below:

Mol	Chain	Res	Type	Atoms	Z	Observed(Å)	Ideal(Å)
2	C	401	BXD	C21-C23	2.01	1.56	1.52
2	B	501	BXD	C68-C5	2.23	1.55	1.50
2	A	501	BXD	C40-C42	2.26	1.43	1.39
2	C	401	BXD	C68-C5	2.27	1.55	1.50
2	A	501	BXD	C68-C5	2.37	1.55	1.50

The worst 5 of 13 bond angle outliers are listed below:

Mol	Chain	Res	Type	Atoms	Z	Observed(°)	Ideal(°)
2	C	401	BXD	O62-C21-C23	-2.09	104.91	109.39
2	C	401	BXD	C11-C10-C9	-2.00	120.36	123.28
2	A	501	BXD	C54-C49-C42	2.08	115.43	110.38
2	B	501	BXD	C54-C49-C42	2.12	115.54	110.38
2	C	401	BXD	C36-N34-C23	2.91	121.05	114.95

There are no chirality outliers.

There are no torsion outliers.

There are no ring outliers.

2 monomers are involved in 2 short contacts:

Mol	Chain	Res	Type	Clashes	Symm-Clashes
2	B	501	BXD	1	0
2	C	401	BXD	1	0

## 5.7 Other polymers [i](#)

There are no such residues in this entry.

## 5.8 Polymer linkage issues [i](#)

There are no chain breaks in this entry.

## 6 Fit of model and data [i](#)

### 6.1 Protein, DNA and RNA chains [i](#)

In the following table, the column labelled ‘#RSRZ > 2’ contains the number (and percentage) of RSRZ outliers, followed by percent RSRZ outliers for the chain as percentile scores relative to all X-ray entries and entries of similar resolution. The OWAB column contains the minimum, median, 95<sup>th</sup> percentile and maximum values of the occupancy-weighted average B-factor per residue. The column labelled ‘Q < 0.9’ lists the number of (and percentage) of residues with an average occupancy less than 0.9.

Mol	Chain	Analysed	<RSRZ>	#RSRZ>2	OWAB(Å <sup>2</sup> )	Q<0.9
1	A	377/402 (93%)	0.15	8 (2%) 63 66	23, 36, 67, 102	0
1	B	377/402 (93%)	0.27	17 (4%) 33 34	21, 37, 72, 111	0
1	C	381/402 (94%)	0.27	18 (4%) 31 32	23, 37, 71, 104	0
All	All	1135/1206 (94%)	0.23	43 (3%) 40 42	21, 37, 71, 111	0

The worst 5 of 43 RSRZ outliers are listed below:

Mol	Chain	Res	Type	RSRZ
1	B	301	VAL	10.6
1	B	303	THR	9.6
1	A	301	VAL	7.9
1	B	302	ALA	7.7
1	C	307	THR	7.6

### 6.2 Non-standard residues in protein, DNA, RNA chains [i](#)

There are no non-standard protein/DNA/RNA residues in this entry.

### 6.3 Carbohydrates [i](#)

There are no carbohydrates in this entry.

### 6.4 Ligands [i](#)

In the following table, the Atoms column lists the number of modelled atoms in the group and the number defined in the chemical component dictionary. The B-factors column lists the minimum, median, 95<sup>th</sup> percentile and maximum values of B factors of atoms in the group. The column labelled ‘Q < 0.9’ lists the number of atoms with occupancy less than 0.9.

Mol	Type	Chain	Res	Atoms	RSCC	RSR	B-factors( $\text{\AA}^2$ )	Q<0.9
3	SO4	B	502	5/5	0.95	0.27	77,77,78,79	0
3	SO4	C	402	5/5	0.96	0.10	57,57,58,59	0
2	BXD	C	401	40/40	0.97	0.13	26,30,45,50	0
2	BXD	B	501	40/40	0.97	0.13	26,30,49,53	0
2	BXD	A	501	40/40	0.97	0.14	25,30,48,51	0

## 6.5 Other polymers [i](#)

There are no such residues in this entry.