



# Full wwPDB X-ray Structure Validation Report ⓘ

Mar 8, 2018 – 08:17 pm GMT

PDB ID : 1DB1  
Title : CRYSTAL STRUCTURE OF THE NUCLEAR RECEPTOR FOR VITAMIN D COMPLEXED TO VITAMIN D  
Authors : Rochel, N.; Wurtz, J.M.; Mitschler, A.; Klaholz, B.; Moras, D.  
Deposited on : 1999-11-02  
Resolution : 1.80 Å(reported)

This is a Full wwPDB X-ray Structure Validation Report for a publicly released PDB entry.

We welcome your comments at [validation@mail.wwpdb.org](mailto:validation@mail.wwpdb.org)

A user guide is available at

<https://www.wwpdb.org/validation/2017/XrayValidationReportHelp>

with specific help available everywhere you see the ⓘ symbol.

---

The following versions of software and data (see [references ⓘ](#)) were used in the production of this report:

MolProbity : 4.02b-467  
Mogul : 1.7.3 (157068), CSD as539be (2018)  
Xtriage (Phenix) : 1.13  
EDS : trunk30967  
Percentile statistics : 20171227.v01 (using entries in the PDB archive December 27th 2017)  
Refmac : 5.8.0158  
CCP4 : 7.0 (Gargrove)  
Ideal geometry (proteins) : Engh & Huber (2001)  
Ideal geometry (DNA, RNA) : Parkinson et al. (1996)  
Validation Pipeline (wwPDB-VP) : trunk30967

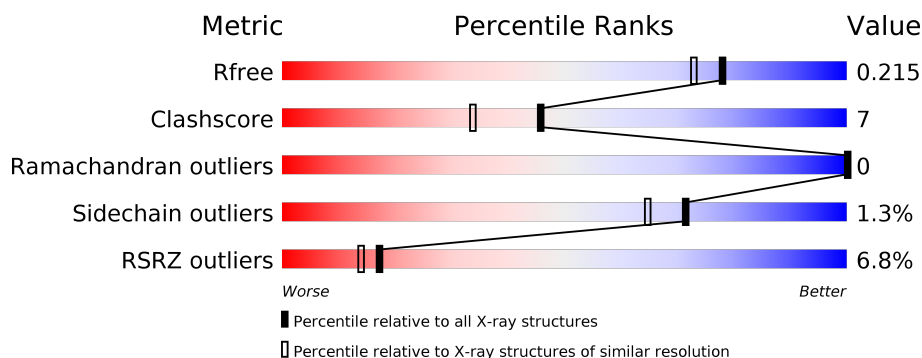
# 1 Overall quality at a glance

The following experimental techniques were used to determine the structure:

*X-RAY DIFFRACTION*

The reported resolution of this entry is 1.80 Å.

Percentile scores (ranging between 0-100) for global validation metrics of the entry are shown in the following graphic. The table shows the number of entries on which the scores are based.



Metric	Whole archive (#Entries)	Similar resolution (#Entries, resolution range(Å))
$R_{free}$	111664	5253 (1.80-1.80)
Clashscore	122126	6077 (1.80-1.80)
Ramachandran outliers	120053	6011 (1.80-1.80)
Sidechain outliers	120020	6010 (1.80-1.80)
RSRZ outliers	108989	5157 (1.80-1.80)

The table below summarises the geometric issues observed across the polymeric chains and their fit to the electron density. The red, orange, yellow and green segments on the lower bar indicate the fraction of residues that contain outliers for  $\geq 3$ , 2, 1 and 0 types of geometric quality criteria. A grey segment represents the fraction of residues that are not modelled. The numeric value for each fraction is indicated below the corresponding segment, with a dot representing fractions  $\leq 5\%$ . The upper red bar (where present) indicates the fraction of residues that have poor fit to the electron density. The numeric value is given above the bar.

Mol	Chain	Length	Quality of chain
1	A	259	<div> <div>7%</div> <div>83%</div> <div>13%</div> <div>••</div> </div>

## 2 Entry composition [i](#)

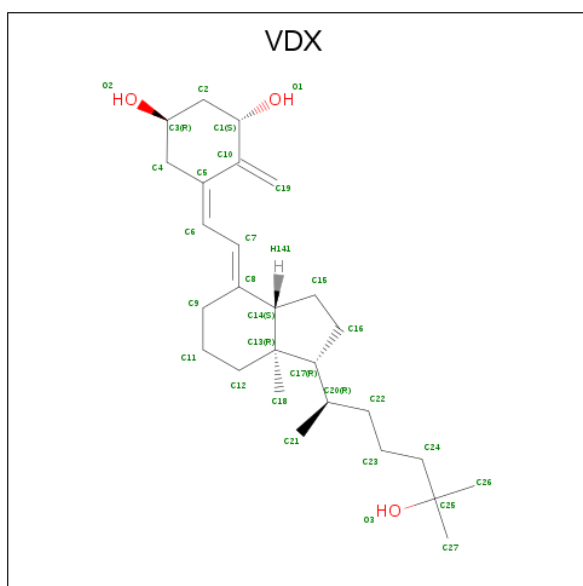
There are 3 unique types of molecules in this entry. The entry contains 2186 atoms, of which 0 are hydrogens and 0 are deuteriums.

In the tables below, the ZeroOcc column contains the number of atoms modelled with zero occupancy, the AltConf column contains the number of residues with at least one atom in alternate conformation and the Trace column contains the number of residues modelled with at most 2 atoms.

- Molecule 1 is a protein called VITAMIN D NUCLEAR RECEPTOR.

Mol	Chain	Residues	Atoms					ZeroOcc	AltConf	Trace
			Total	C	N	O	S			
1	A	250	1992	1267	340	371	14	0	0	0

- Molecule 2 is 5-{2-[1-(5-HYDROXY-1,5-DIMETHYL-HEXYL)-7A-METHYL-OCTAHYDRO-INDEN-4-YLIDENE]-ETHYLIDENE}-4-METHYLENE-CYCLOHEXANE-1,3-DIOL (three-letter code: VDX) (formula: C<sub>27</sub>H<sub>44</sub>O<sub>3</sub>).



Mol	Chain	Residues	Atoms			ZeroOcc	AltConf
			Total	C	O		
2	A	1	30	27	3	0	0

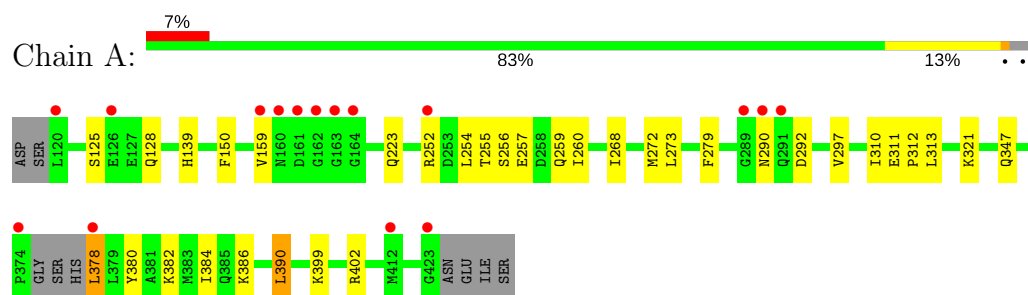
- Molecule 3 is water.

Mol	Chain	Residues	Atoms		ZeroOcc	AltConf
3	A	164	Total	O	0	0
			164	164		

### 3 Residue-property plots

These plots are drawn for all protein, RNA and DNA chains in the entry. The first graphic for a chain summarises the proportions of the various outlier classes displayed in the second graphic. The second graphic shows the sequence view annotated by issues in geometry and electron density. Residues are color-coded according to the number of geometric quality criteria for which they contain at least one outlier: green = 0, yellow = 1, orange = 2 and red = 3 or more. A red dot above a residue indicates a poor fit to the electron density ( $RSRZ > 2$ ). Stretches of 2 or more consecutive residues without any outlier are shown as a green connector. Residues present in the sample, but not in the model, are shown in grey.

#### • Molecule 1: VITAMIN D NUCLEAR RECEPTOR



## 4 Data and refinement statistics

Property	Value	Source
Space group	P 21 21 21	Depositor
Cell constants a, b, c, $\alpha$ , $\beta$ , $\gamma$	45.19Å 52.44Å 133.29Å 90.00° 90.00° 90.00°	Depositor
Resolution (Å)	20.00 – 1.80 19.94 – 1.80	Depositor EDS
% Data completeness (in resolution range)	95.6 (20.00-1.80) 95.6 (19.94-1.80)	Depositor EDS
$R_{merge}$	0.06	Depositor
$R_{sym}$	(Not available)	Depositor
$\langle I/\sigma(I) \rangle$ <sup>1</sup>	5.03 (at 1.80Å)	Xtriage
Refinement program	CNS	Depositor
R, $R_{free}$	0.191 , 0.214 0.192 , 0.215	Depositor DCC
$R_{free}$ test set	2929 reflections (9.98%)	wwPDB-VP
Wilson B-factor (Å <sup>2</sup> )	28.1	Xtriage
Anisotropy	0.153	Xtriage
Bulk solvent $k_{sol}$ (e/Å <sup>3</sup> ), $B_{sol}$ (Å <sup>2</sup> )	0.35 , 48.2	EDS
L-test for twinning <sup>2</sup>	$\langle  L  \rangle = 0.49$ , $\langle L^2 \rangle = 0.32$	Xtriage
Estimated twinning fraction	No twinning to report.	Xtriage
$F_o, F_c$ correlation	0.96	EDS
Total number of atoms	2186	wwPDB-VP
Average B, all atoms (Å <sup>2</sup> )	32.0	wwPDB-VP

Xtriage's analysis on translational NCS is as follows: *The largest off-origin peak in the Patterson function is 6.13% of the height of the origin peak. No significant pseudotranslation is detected.*

<sup>1</sup>Intensities estimated from amplitudes.

<sup>2</sup>Theoretical values of  $\langle |L| \rangle$ ,  $\langle L^2 \rangle$  for acentric reflections are 0.5, 0.333 respectively for untwinned datasets, and 0.375, 0.2 for perfectly twinned datasets.

## 5 Model quality

### 5.1 Standard geometry

Bond lengths and bond angles in the following residue types are not validated in this section: VDX

The Z score for a bond length (or angle) is the number of standard deviations the observed value is removed from the expected value. A bond length (or angle) with  $|Z| > 5$  is considered an outlier worth inspection. RMSZ is the root-mean-square of all Z scores of the bond lengths (or angles).

Mol	Chain	Bond lengths		Bond angles	
		RMSZ	$\# Z  > 5$	RMSZ	$\# Z  > 5$
1	A	0.35	1/2030 (0.0%)	0.52	0/2745

All (1) bond length outliers are listed below:

Mol	Chain	Res	Type	Atoms	Z	Observed(Å)	Ideal(Å)
1	A	378	LEU	C-N	9.77	1.56	1.34

There are no bond angle outliers.

There are no chirality outliers.

There are no planarity outliers.

### 5.2 Too-close contacts

In the following table, the Non-H and H(model) columns list the number of non-hydrogen atoms and hydrogen atoms in the chain respectively. The H(added) column lists the number of hydrogen atoms added and optimized by MolProbity. The Clashes column lists the number of clashes within the asymmetric unit, whereas Symm-Clashes lists symmetry related clashes.

Mol	Chain	Non-H	H(model)	H(added)	Clashes	Symm-Clashes
1	A	1992	0	2024	28	0
2	A	30	0	44	0	0
3	A	164	0	0	5	0
All	All	2186	0	2068	28	0

The all-atom clashscore is defined as the number of clashes found per 1000 atoms (including hydrogen atoms). The all-atom clashscore for this structure is 7.

All (28) close contacts within the same asymmetric unit are listed below, sorted by their clash magnitude.

Atom-1	Atom-2	Interatomic distance (Å)	Clash overlap (Å)
1:A:159:VAL:HG21	1:A:223:GLN:NE2	1.91	0.85
1:A:378:LEU:HG	1:A:382:LYS:HE3	1.53	0.85
1:A:254:LEU:HD23	1:A:351:LEU:HD13	1.70	0.73
1:A:297:VAL:HG13	1:A:310:ILE:HG21	1.71	0.72
1:A:378:LEU:CG	1:A:382:LYS:HE3	2.24	0.67
1:A:290:ASN:OD1	1:A:292:ASP:HB2	1.96	0.65
1:A:273:LEU:HG	1:A:390:LEU:HD21	1.87	0.57
1:A:159:VAL:HG21	1:A:223:GLN:HE22	1.68	0.56
1:A:311:GLU:HB2	1:A:312:PRO:HD3	1.90	0.53
1:A:125:SER:H	1:A:128:GLN:HE21	1.58	0.52
1:A:378:LEU:CD2	1:A:382:LYS:HE3	2.41	0.51
1:A:256:SER:O	1:A:260:ILE:HG12	2.12	0.50
1:A:252:ARG:HG3	3:A:520:HOH:O	2.11	0.50
1:A:347:GLN:HG2	3:A:625:HOH:O	2.11	0.49
1:A:159:VAL:HG21	1:A:223:GLN:HE21	1.72	0.49
1:A:279:PHE:O	1:A:321:LYS:HE3	2.13	0.48
1:A:257:GLU:HG2	3:A:625:HOH:O	2.13	0.48
1:A:139:HIS:HD2	3:A:504:HOH:O	1.97	0.47
1:A:255:THR:O	1:A:259:GLN:HG3	2.14	0.47
1:A:125:SER:H	1:A:128:GLN:NE2	2.14	0.45
1:A:370:ARG:HH11	1:A:370:ARG:HG3	1.82	0.44
1:A:380:TYR:O	1:A:384:ILE:HG12	2.18	0.43
1:A:399:LYS:HA	1:A:402:ARG:NH1	2.35	0.42
1:A:386:LYS:HE2	3:A:564:HOH:O	2.20	0.40
1:A:268:ILE:O	1:A:272:MET:HG3	2.21	0.40
1:A:399:LYS:HA	1:A:402:ARG:HH12	1.86	0.40
1:A:402:ARG:HB2	1:A:402:ARG:NH1	2.35	0.40
1:A:150:PHE:CD1	1:A:150:PHE:N	2.89	0.40

There are no symmetry-related clashes.

## 5.3 Torsion angles [i](#)

### 5.3.1 Protein backbone [i](#)

In the following table, the Percentiles column shows the percent Ramachandran outliers of the chain as a percentile score with respect to all X-ray entries followed by that with respect to entries of similar resolution.

The Analysed column shows the number of residues for which the backbone conformation was analysed, and the total number of residues.

Mol	Chain	Analysed	Favoured	Allowed	Outliers	Percentiles	
1	A	246/259 (95%)	240 (98%)	6 (2%)	0	100	100

There are no Ramachandran outliers to report.

### 5.3.2 Protein sidechains ⓘ

In the following table, the Percentiles column shows the percent sidechain outliers of the chain as a percentile score with respect to all X-ray entries followed by that with respect to entries of similar resolution.

The Analysed column shows the number of residues for which the sidechain conformation was analysed, and the total number of residues.

Mol	Chain	Analysed	Rotameric	Outliers	Percentiles	
1	A	228/236 (97%)	225 (99%)	3 (1%)	71	65

All (3) residues with a non-rotameric sidechain are listed below:

Mol	Chain	Res	Type
1	A	313	LEU
1	A	351	LEU
1	A	390	LEU

Some sidechains can be flipped to improve hydrogen bonding and reduce clashes. All (11) such sidechains are listed below:

Mol	Chain	Res	Type
1	A	128	GLN
1	A	129	GLN
1	A	139	HIS
1	A	140	HIS
1	A	223	GLN
1	A	239	GLN
1	A	259	GLN
1	A	291	GLN
1	A	364	GLN
1	A	385	GLN
1	A	407	GLN

### 5.3.3 RNA ⓘ

There are no RNA molecules in this entry.

## 5.4 Non-standard residues in protein, DNA, RNA chains [i](#)

There are no non-standard protein/DNA/RNA residues in this entry.

## 5.5 Carbohydrates [i](#)

There are no carbohydrates in this entry.

## 5.6 Ligand geometry [i](#)

1 ligand is modelled in this entry.

In the following table, the Counts columns list the number of bonds (or angles) for which Mogul statistics could be retrieved, the number of bonds (or angles) that are observed in the model and the number of bonds (or angles) that are defined in the Chemical Component Dictionary. The Link column lists molecule types, if any, to which the group is linked. The Z score for a bond length (or angle) is the number of standard deviations the observed value is removed from the expected value. A bond length (or angle) with  $|Z| > 2$  is considered an outlier worth inspection. RMSZ is the root-mean-square of all Z scores of the bond lengths (or angles).

Mol	Type	Chain	Res	Link	Bond lengths			Bond angles		
					Counts	RMSZ	$\# Z  > 2$	Counts	RMSZ	$\# Z  > 2$
2	VDX	A	428	-	31,32,32	3.12	15 (48%)	45,48,48	2.29	16 (35%)

In the following table, the Chirals column lists the number of chiral outliers, the number of chiral centers analysed, the number of these observed in the model and the number defined in the Chemical Component Dictionary. Similar counts are reported in the Torsion and Rings columns. '-' means no outliers of that kind were identified.

Mol	Type	Chain	Res	Link	Chirals	Torsions	Rings
2	VDX	A	428	-	-	0/15/60/60	0/3/3/3

All (15) bond length outliers are listed below:

Mol	Chain	Res	Type	Atoms	Z	Observed(Å)	Ideal(Å)
2	A	428	VDX	C2-C1	2.11	1.55	1.52
2	A	428	VDX	C7-C6	2.47	1.51	1.42
2	A	428	VDX	C19-C10	2.51	1.37	1.32
2	A	428	VDX	C13-C14	2.80	1.60	1.56
2	A	428	VDX	C21-C20	2.96	1.60	1.53
2	A	428	VDX	C20-C17	3.29	1.60	1.54
2	A	428	VDX	C12-C11	3.45	1.61	1.52
2	A	428	VDX	C11-C9	3.76	1.64	1.52

*Continued on next page...*

*Continued from previous page...*

Mol	Chain	Res	Type	Atoms	Z	Observed(Å)	Ideal(Å)
2	A	428	VDX	C4-C3	3.95	1.59	1.52
2	A	428	VDX	C2-C3	3.95	1.59	1.51
2	A	428	VDX	C9-C8	4.13	1.61	1.50
2	A	428	VDX	C15-C14	4.95	1.67	1.54
2	A	428	VDX	C12-C13	6.12	1.65	1.54
2	A	428	VDX	C5-C10	6.19	1.55	1.48
2	A	428	VDX	C18-C13	7.75	1.68	1.54

All (16) bond angle outliers are listed below:

Mol	Chain	Res	Type	Atoms	Z	Observed(°)	Ideal(°)
2	A	428	VDX	C21-C20-C17	-5.43	104.48	112.94
2	A	428	VDX	C21-C20-C22	-4.83	102.74	110.34
2	A	428	VDX	C13-C17-C20	-4.67	111.96	119.47
2	A	428	VDX	C18-C13-C12	-4.00	104.10	110.59
2	A	428	VDX	C15-C14-C13	-3.05	101.42	104.19
2	A	428	VDX	C14-C13-C17	-2.43	97.09	99.72
2	A	428	VDX	C6-C5-C10	-2.20	121.99	124.93
2	A	428	VDX	C4-C5-C10	-2.00	111.48	114.31
2	A	428	VDX	C18-C13-C14	2.45	114.17	110.17
2	A	428	VDX	C24-C23-C22	2.58	118.25	112.82
2	A	428	VDX	C11-C12-C13	2.82	116.75	113.20
2	A	428	VDX	C18-C13-C17	3.24	117.86	111.72
2	A	428	VDX	C22-C20-C17	3.67	117.96	110.28
2	A	428	VDX	C16-C17-C20	3.70	118.05	112.15
2	A	428	VDX	C4-C5-C6	3.98	126.53	120.50
2	A	428	VDX	C7-C6-C5	4.50	133.72	126.44

There are no chirality outliers.

There are no torsion outliers.

There are no ring outliers.

No monomer is involved in short contacts.

## 5.7 Other polymers [i](#)

There are no such residues in this entry.

## 5.8 Polymer linkage issues [i](#)

There are no chain breaks in this entry.

## 6 Fit of model and data [i](#)

### 6.1 Protein, DNA and RNA chains [i](#)

In the following table, the column labelled ‘#RSRZ> 2’ contains the number (and percentage) of RSRZ outliers, followed by percent RSRZ outliers for the chain as percentile scores relative to all X-ray entries and entries of similar resolution. The OWAB column contains the minimum, median, 95<sup>th</sup> percentile and maximum values of the occupancy-weighted average B-factor per residue. The column labelled ‘Q< 0.9’ lists the number of (and percentage) of residues with an average occupancy less than 0.9.

Mol	Chain	Analysed	<RSRZ>	#RSRZ>2	OWAB(Å <sup>2</sup> )	Q<0.9
1	A	250/259 (96%)	0.09	17 (6%) <b>17</b> <b>14</b>	19, 30, 45, 57	0

All (17) RSRZ outliers are listed below:

Mol	Chain	Res	Type	RSRZ
1	A	378	LEU	6.6
1	A	374	PRO	4.7
1	A	159	VAL	4.5
1	A	423	GLY	4.2
1	A	162	GLY	3.8
1	A	373	PRO	3.4
1	A	163	GLY	3.3
1	A	160	ASN	3.1
1	A	164	GLY	2.6
1	A	412	MET	2.6
1	A	126	GLU	2.6
1	A	291	GLN	2.5
1	A	120	LEU	2.2
1	A	289	GLY	2.2
1	A	161	ASP	2.1
1	A	252	ARG	2.1
1	A	290	ASN	2.0

### 6.2 Non-standard residues in protein, DNA, RNA chains [i](#)

There are no non-standard protein/DNA/RNA residues in this entry.

### 6.3 Carbohydrates [i](#)

There are no carbohydrates in this entry.

## 6.4 Ligands

In the following table, the Atoms column lists the number of modelled atoms in the group and the number defined in the chemical component dictionary. The B-factors column lists the minimum, median, 95<sup>th</sup> percentile and maximum values of B factors of atoms in the group. The column labelled 'Q< 0.9' lists the number of atoms with occupancy less than 0.9.

Mol	Type	Chain	Res	Atoms	RSCC	RSR	B-factors( $\text{\AA}^2$ )	Q<0.9
2	VDX	A	428	30/30	0.95	0.16	20,21,24,25	0

## 6.5 Other polymers

There are no such residues in this entry.