



wwPDB X-ray Structure Validation Summary Report ⓘ

Aug 25, 2018 – 12:58 PM EDT

PDB ID : 6E4U
Title : Structure of AMPK bound to activator
Authors : Calabrese, M.F.; Kurumbail, R.G.
Deposited on : 2018-07-18
Resolution : 3.27 Å(reported)

This is a wwPDB X-ray Structure Validation Summary Report for a publicly released PDB entry.

We welcome your comments at validation@mail.wwpdb.org

A user guide is available at

<https://www.wwpdb.org/validation/2017/XrayValidationReportHelp>

with specific help available everywhere you see the ⓘ symbol.

The following versions of software and data (see [references ⓘ](#)) were used in the production of this report:

MolProbity : 4.02b-467
Mogul : 1.7.3 (157068), CSD as539be (2018)
Xtriage (Phenix) : 1.13
EDS : rb-20031172
Percentile statistics : 20171227.v01 (using entries in the PDB archive December 27th 2017)
Refmac : 5.8.0158
CCP4 : 7.0 (Gargrove)
Ideal geometry (proteins) : Engh & Huber (2001)
Ideal geometry (DNA, RNA) : Parkinson et al. (1996)
Validation Pipeline (wwPDB-VP) : rb-20031172

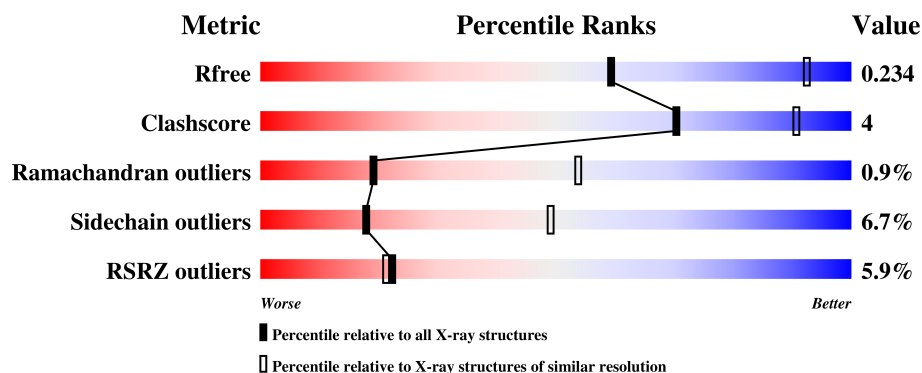
1 Overall quality at a glance

The following experimental techniques were used to determine the structure:

X-RAY DIFFRACTION

The reported resolution of this entry is 3.27 Å.

Percentile scores (ranging between 0-100) for global validation metrics of the entry are shown in the following graphic. The table shows the number of entries on which the scores are based.



Metric	Whole archive (#Entries)	Similar resolution (#Entries, resolution range(Å))
R_{free}	111664	1138 (3.34-3.22)
Clashscore	122126	1055 (3.32-3.24)
Ramachandran outliers	120053	1037 (3.32-3.24)
Sidechain outliers	120020	1036 (3.32-3.24)
RSRZ outliers	108989	1104 (3.34-3.22)

The table below summarises the geometric issues observed across the polymeric chains and their fit to the electron density. The red, orange, yellow and green segments on the lower bar indicate the fraction of residues that contain outliers for ≥ 3 , 2, 1 and 0 types of geometric quality criteria. A grey segment represents the fraction of residues that are not modelled. The numeric value for each fraction is indicated below the corresponding segment, with a dot representing fractions $\leq 5\%$. The upper red bar (where present) indicates the fraction of residues that have poor fit to the electron density. The numeric value is given above the bar.

Mol	Chain	Length	Quality of chain
1	A	503	<div> <div>3%</div> <div>62%</div> <div>10%</div> <div>27%</div> </div>
2	B	204	<div> <div>2%</div> <div>60%</div> <div>17%</div> <div>21%</div> </div>
3	C	330	<div> <div>8%</div> <div>77%</div> <div>8%</div> <div>14%</div> </div>

2 Entry composition

There are 9 unique types of molecules in this entry. The entry contains 6340 atoms, of which 0 are hydrogens and 0 are deuteriums.

In the tables below, the ZeroOcc column contains the number of atoms modelled with zero occupancy, the AltConf column contains the number of residues with at least one atom in alternate conformation and the Trace column contains the number of residues modelled with at most 2 atoms.

- Molecule 1 is a protein called 5'-AMP-activated protein kinase catalytic subunit alpha-1.

Mol	Chain	Residues	Atoms						ZeroOcc	AltConf	Trace
1	A	366	Total	C	N	O	P	S	0	0	0
			2884	1849	494	522	1	18			

There are 9 discrepancies between the modelled and reference sequences:

Chain	Residue	Modelled	Actual	Comment	Reference
A	-1	GLY	-	expression tag	UNP P54645
A	517	ALA	-	linker	UNP P54645
A	518	SER	-	linker	UNP P54645
A	519	GLY	-	linker	UNP P54645
A	520	GLY	-	linker	UNP P54645
A	521	PRO	-	linker	UNP P54645
A	522	GLY	-	linker	UNP P54645
A	523	GLY	-	linker	UNP P54645
A	524	SER	-	linker	UNP P54645

- Molecule 2 is a protein called 5'-AMP-activated protein kinase subunit beta-1.

Mol	Chain	Residues	Atoms						ZeroOcc	AltConf	Trace
2	B	161	Total	C	N	O	P	S	0	0	0
			1242	805	208	226	1	2			

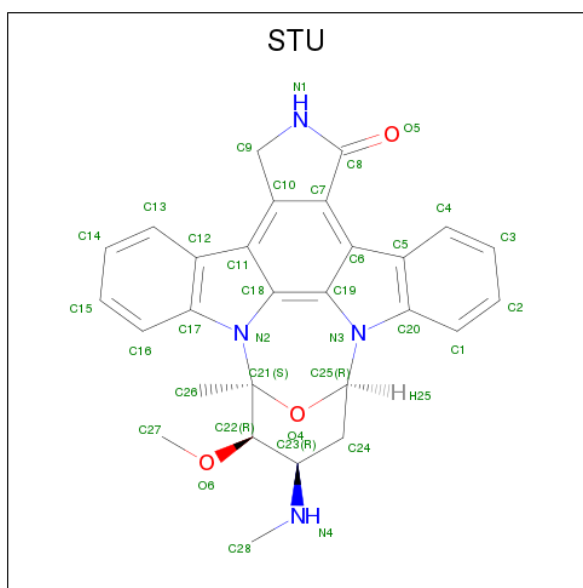
There is a discrepancy between the modelled and reference sequences:

Chain	Residue	Modelled	Actual	Comment	Reference
B	67	MET	-	initiating methionine	UNP P80386

- Molecule 3 is a protein called 5'-AMP-activated protein kinase subunit gamma-1.

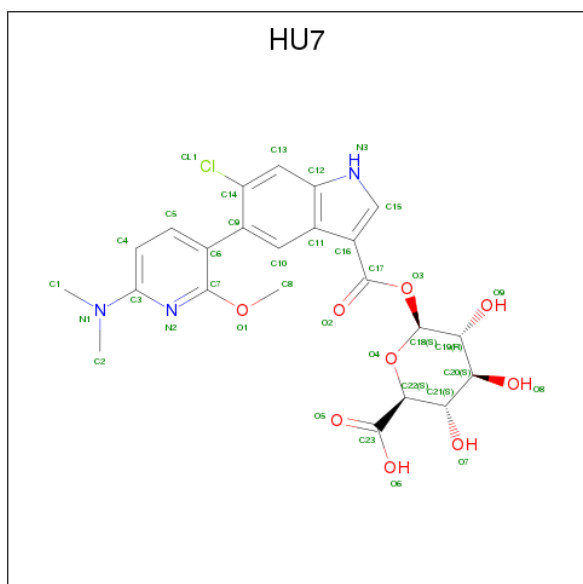
Mol	Chain	Residues	Atoms					ZeroOcc	AltConf	Trace
3	C	283	Total	C	N	O	S	0	0	0
			2061	1329	350	377	5			

- Molecule 4 is STAUROSPORINE (three-letter code: STU) (formula: $C_{28}H_{26}N_4O_3$).



Mol	Chain	Residues	Atoms				ZeroOcc	AltConf
4	A	1	Total	C	N	O	0	0
			35	28	4	3		

- Molecule 5 is 1-O-{6-chloro-5-[6-(dimethylamino)-2-methoxypyridin-3-yl]-1H-indole-3-carbonyl}-beta-D-glucopyranuronic acid (three-letter code: HU7) (formula: $C_{23}H_{24}ClN_3O_9$).

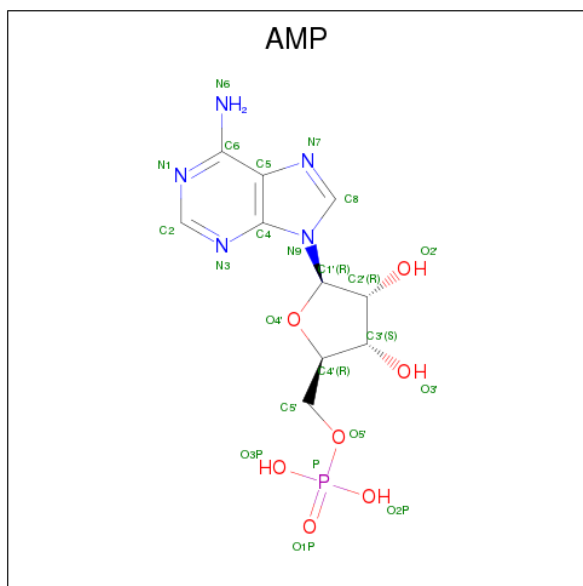


Mol	Chain	Residues	Atoms					ZeroOcc	AltConf
5	A	1	Total	C	Cl	N	O	0	0
			36	23	1	3	9		

- Molecule 6 is CHLORIDE ION (three-letter code: CL) (formula: Cl).

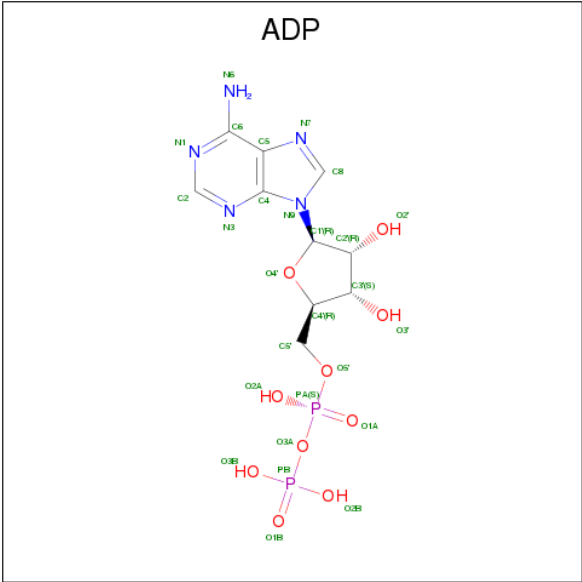
Mol	Chain	Residues	Atoms	ZeroOcc	AltConf
6	A	4	Total Cl 4 4	0	0

- Molecule 7 is ADENOSINE MONOPHOSPHATE (three-letter code: AMP) (formula: C₁₀H₁₄N₅O₇P).



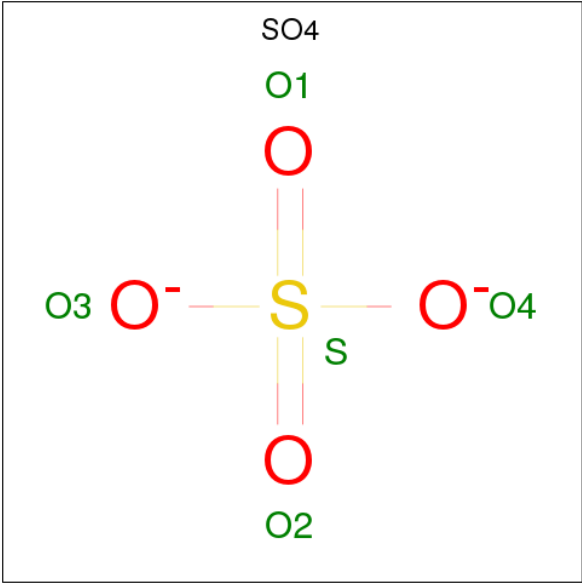
Mol	Chain	Residues	Atoms	ZeroOcc	AltConf
7	C	1	Total C N O P 23 10 5 7 1	0	0
7	C	1	Total C N O P 23 10 5 7 1	0	0

- Molecule 8 is ADENOSINE-5'-DIPHOSPHATE (three-letter code: ADP) (formula: C₁₀H₁₅N₅O₁₀P₂).



Mol	Chain	Residues	Atoms					ZeroOcc	AltConf
8	C	1	Total	C	N	O	P	0	0
			27	10	5	10	2		

- Molecule 9 is SULFATE ION (three-letter code: SO4) (formula: O₄S).

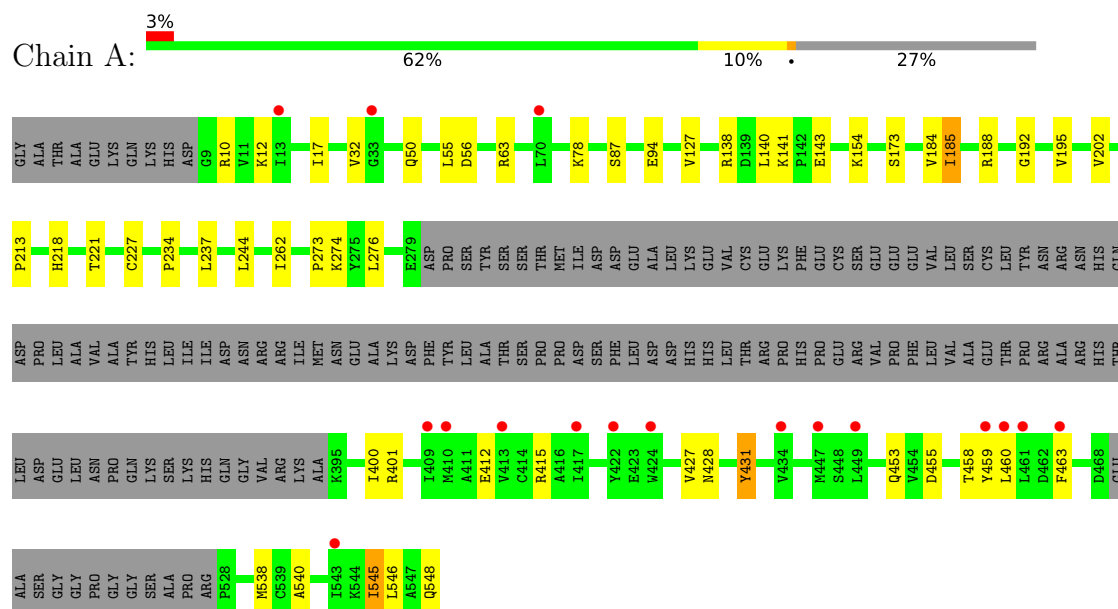


Mol	Chain	Residues	Atoms			ZeroOcc	AltConf
9	C	1	Total	O	S	0	0
			5	4	1		

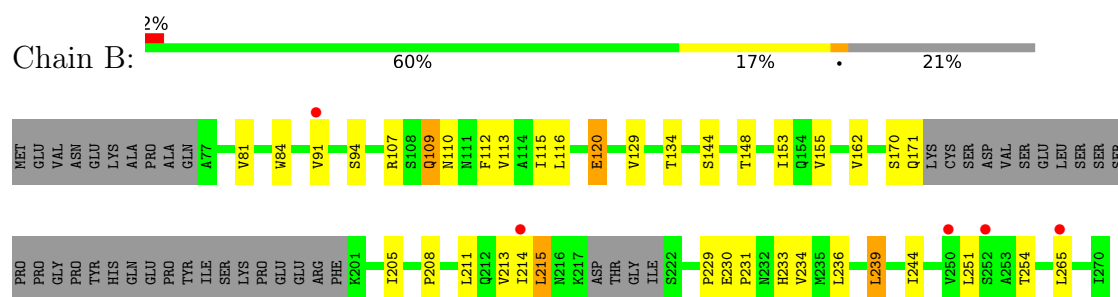
3 Residue-property plots [i](#)

These plots are drawn for all protein, RNA and DNA chains in the entry. The first graphic for a chain summarises the proportions of the various outlier classes displayed in the second graphic. The second graphic shows the sequence view annotated by issues in geometry and electron density. Residues are color-coded according to the number of geometric quality criteria for which they contain at least one outlier: green = 0, yellow = 1, orange = 2 and red = 3 or more. A red dot above a residue indicates a poor fit to the electron density ($RSRZ > 2$). Stretches of 2 or more consecutive residues without any outlier are shown as a green connector. Residues present in the sample, but not in the model, are shown in grey.

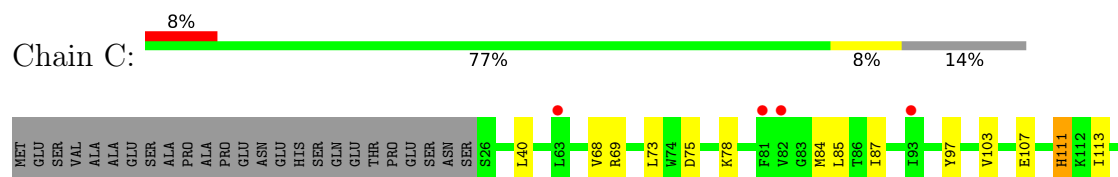
- Molecule 1: 5'-AMP-activated protein kinase catalytic subunit alpha-1

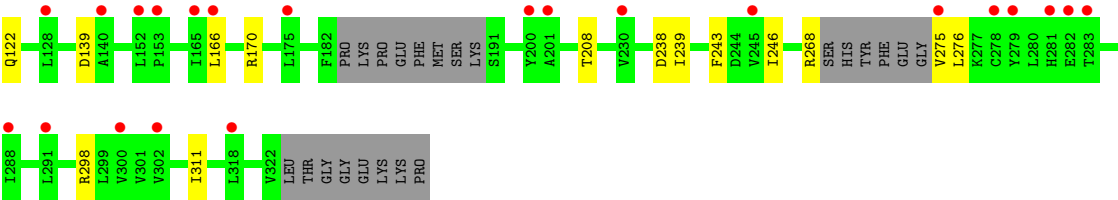


- Molecule 2: 5'-AMP-activated protein kinase subunit beta-1



- Molecule 3: 5'-AMP-activated protein kinase subunit gamma-1





4 Data and refinement statistics

Property	Value	Source
Space group	P 61 2 2	Depositor
Cell constants a, b, c, α , β , γ	124.50Å 124.50Å 402.78Å 90.00° 90.00° 120.00°	Depositor
Resolution (Å)	107.82 – 3.27 104.15 – 3.35	Depositor EDS
% Data completeness (in resolution range)	92.9 (107.82-3.27) 99.9 (104.15-3.35)	Depositor EDS
R_{merge}	0.14	Depositor
R_{sym}	(Not available)	Depositor
$\langle I/\sigma(I) \rangle$ ¹	3.09 (at 3.33Å)	Xtriage
Refinement program	BUSTER 2.11.7	Depositor
R, R_{free}	0.212 , 0.231 0.211 , 0.234	Depositor DCC
R_{free} test set	1369 reflections (4.98%)	wwPDB-VP
Wilson B-factor (Å ²)	81.1	Xtriage
Anisotropy	0.563	Xtriage
Bulk solvent k_{sol} (e/Å ³), B_{sol} (Å ²)	0.35 , 85.4	EDS
L-test for twinning ²	$\langle L \rangle = 0.48$, $\langle L^2 \rangle = 0.31$	Xtriage
Estimated twinning fraction	No twinning to report.	Xtriage
F_o, F_c correlation	0.92	EDS
Total number of atoms	6340	wwPDB-VP
Average B, all atoms (Å ²)	100.0	wwPDB-VP

Xtriage's analysis on translational NCS is as follows: *The largest off-origin peak in the Patterson function is 4.28% of the height of the origin peak. No significant pseudotranslation is detected.*

¹Intensities estimated from amplitudes.

²Theoretical values of $\langle |L| \rangle$, $\langle L^2 \rangle$ for acentric reflections are 0.5, 0.333 respectively for untwinned datasets, and 0.375, 0.2 for perfectly twinned datasets.

5 Model quality

5.1 Standard geometry

Bond lengths and bond angles in the following residue types are not validated in this section: ADP, CL, TPO, SEP, STU, HU7, SO4, AMP

The Z score for a bond length (or angle) is the number of standard deviations the observed value is removed from the expected value. A bond length (or angle) with $|Z| > 5$ is considered an outlier worth inspection. RMSZ is the root-mean-square of all Z scores of the bond lengths (or angles).

Mol	Chain	Bond lengths		Bond angles	
		RMSZ	# Z >5	RMSZ	# Z >5
1	A	0.40	0/2939	0.65	0/3982
2	B	0.37	0/1265	0.63	0/1730
3	C	0.41	0/2099	0.60	0/2880
All	All	0.40	0/6303	0.63	0/8592

There are no bond length outliers.

There are no bond angle outliers.

There are no chirality outliers.

There are no planarity outliers.

5.2 Too-close contacts

In the following table, the Non-H and H(model) columns list the number of non-hydrogen atoms and hydrogen atoms in the chain respectively. The H(added) column lists the number of hydrogen atoms added and optimized by MolProbity. The Clashes column lists the number of clashes within the asymmetric unit, whereas Symm-Clashes lists symmetry related clashes.

Mol	Chain	Non-H	H(model)	H(added)	Clashes	Symm-Clashes
1	A	2884	0	2812	21	0
2	B	1242	0	1202	13	0
3	C	2061	0	1938	11	0
4	A	35	0	26	6	0
5	A	36	0	0	0	0
6	A	4	0	0	0	0
7	C	46	0	24	2	0
8	C	27	0	12	0	0
9	C	5	0	0	0	0
All	All	6340	0	6014	48	0

The all-atom clashscore is defined as the number of clashes found per 1000 atoms (including hydrogen atoms). The all-atom clashscore for this structure is 4.

The worst 5 of 48 close contacts within the same asymmetric unit are listed below, sorted by their clash magnitude.

Atom-1	Atom-2	Interatomic distance (Å)	Clash overlap (Å)
4:A:601:STU:H272	4:A:601:STU:H283	1.27	1.09
4:A:601:STU:H16	4:A:601:STU:H261	1.51	0.91
4:A:601:STU:C28	4:A:601:STU:H272	2.02	0.90
4:A:601:STU:C27	4:A:601:STU:H283	2.05	0.85
1:A:455:ASP:HB2	1:A:458:THR:HG22	1.76	0.66

There are no symmetry-related clashes.

5.3 Torsion angles [i](#)

5.3.1 Protein backbone [i](#)

In the following table, the Percentiles column shows the percent Ramachandran outliers of the chain as a percentile score with respect to all X-ray entries followed by that with respect to entries of similar resolution.

The Analysed column shows the number of residues for which the backbone conformation was analysed, and the total number of residues.

Mol	Chain	Analysed	Favoured	Allowed	Outliers	Percentiles	
1	A	359/503 (71%)	345 (96%)	12 (3%)	2 (1%)	27	62
2	B	154/204 (76%)	141 (92%)	9 (6%)	4 (3%)	6	31
3	C	277/330 (84%)	265 (96%)	11 (4%)	1 (0%)	36	69
All	All	790/1037 (76%)	751 (95%)	32 (4%)	7 (1%)	19	54

5 of 7 Ramachandran outliers are listed below:

Mol	Chain	Res	Type
1	A	56	ASP
3	C	122	GLN
2	B	120	GLU
2	B	162	VAL
2	B	170	SER

5.3.2 Protein sidechains ⓘ

In the following table, the Percentiles column shows the percent sidechain outliers of the chain as a percentile score with respect to all X-ray entries followed by that with respect to entries of similar resolution.

The Analysed column shows the number of residues for which the sidechain conformation was analysed, and the total number of residues.

Mol	Chain	Analysed	Rotameric	Outliers	Percentiles	
1	A	308/448 (69%)	292 (95%)	16 (5%)	25	58
2	B	132/184 (72%)	117 (89%)	15 (11%)	6	25
3	C	202/299 (68%)	190 (94%)	12 (6%)	21	54
All	All	642/931 (69%)	599 (93%)	43 (7%)	18	49

5 of 43 residues with a non-rotameric sidechain are listed below:

Mol	Chain	Res	Type
2	B	113	VAL
2	B	153	ILE
3	C	239	ILE
2	B	116	LEU
2	B	134	THR

Some sidechains can be flipped to improve hydrogen bonding and reduce clashes. All (2) such sidechains are listed below:

Mol	Chain	Res	Type
1	A	218	HIS
2	B	216	ASN

5.3.3 RNA ⓘ

There are no RNA molecules in this entry.

5.4 Non-standard residues in protein, DNA, RNA chains ⓘ

2 non-standard protein/DNA/RNA residues are modelled in this entry.

In the following table, the Counts columns list the number of bonds (or angles) for which Mogul statistics could be retrieved, the number of bonds (or angles) that are observed in the model and the number of bonds (or angles) that are defined in the Chemical Component Dictionary. The Link column lists molecule types, if any, to which the group is linked. The Z score for a bond

length (or angle) is the number of standard deviations the observed value is removed from the expected value. A bond length (or angle) with $|Z| > 2$ is considered an outlier worth inspection. RMSZ is the root-mean-square of all Z scores of the bond lengths (or angles).

Mol	Type	Chain	Res	Link	Bond lengths			Bond angles		
					Counts	RMSZ	$\# Z > 2$	Counts	RMSZ	$\# Z > 2$
1	TPO	A	172	1	9,10,11	1.31	2 (22%)	11,14,16	1.51	3 (27%)
2	SEP	B	108	2	9,9,10	1.03	1 (11%)	9,12,14	4.01	3 (33%)

In the following table, the Chirals column lists the number of chiral outliers, the number of chiral centers analysed, the number of these observed in the model and the number defined in the Chemical Component Dictionary. Similar counts are reported in the Torsion and Rings columns. '-' means no outliers of that kind were identified.

Mol	Type	Chain	Res	Link	Chirals	Torsions	Rings
1	TPO	A	172	1	-	0/8/11/13	0/0/0/0
2	SEP	B	108	2	-	0/5/8/10	0/0/0/0

All (3) bond length outliers are listed below:

Mol	Chain	Res	Type	Atoms	Z	Observed(Å)	Ideal(Å)
1	A	172	TPO	P-OG1	-2.73	1.54	1.59
2	B	108	SEP	CA-C	2.05	1.52	1.50
1	A	172	TPO	CA-C	2.20	1.53	1.50

The worst 5 of 6 bond angle outliers are listed below:

Mol	Chain	Res	Type	Atoms	Z	Observed(°)	Ideal(°)
1	A	172	TPO	P-OG1-CB	-2.48	115.71	123.21
2	B	108	SEP	O3P-P-O1P	-2.18	102.09	110.60
1	A	172	TPO	O-C-CA	-2.10	120.18	125.09
1	A	172	TPO	C-CA-N	2.47	114.85	109.86
2	B	108	SEP	O2P-P-OG	2.79	114.16	106.73

There are no chirality outliers.

There are no torsion outliers.

There are no ring outliers.

No monomer is involved in short contacts.

5.5 Carbohydrates ⓘ

There are no carbohydrates in this entry.

5.6 Ligand geometry

Of 10 ligands modelled in this entry, 4 are monoatomic - leaving 6 for Mogul analysis.

In the following table, the Counts columns list the number of bonds (or angles) for which Mogul statistics could be retrieved, the number of bonds (or angles) that are observed in the model and the number of bonds (or angles) that are defined in the Chemical Component Dictionary. The Link column lists molecule types, if any, to which the group is linked. The Z score for a bond length (or angle) is the number of standard deviations the observed value is removed from the expected value. A bond length (or angle) with $|Z| > 2$ is considered an outlier worth inspection. RMSZ is the root-mean-square of all Z scores of the bond lengths (or angles).

Mol	Type	Chain	Res	Link	Bond lengths			Bond angles		
					Counts	RMSZ	# Z > 2	Counts	RMSZ	# Z > 2
4	STU	A	601	-	30,42,42	2.48	11 (36%)	30,68,68	2.02	11 (36%)
5	HU7	A	602	-	35,39,39	1.10	2 (5%)	47,58,58	0.69	1 (2%)
7	AMP	C	401	-	22,25,25	0.55	0	23,38,38	1.19	1 (4%)
7	AMP	C	402	-	22,25,25	0.62	0	23,38,38	1.23	2 (8%)
8	ADP	C	403	-	25,29,29	0.66	0	25,45,45	0.78	0
9	SO4	C	404	-	4,4,4	0.12	0	6,6,6	0.13	0

In the following table, the Chirals column lists the number of chiral outliers, the number of chiral centers analysed, the number of these observed in the model and the number defined in the Chemical Component Dictionary. Similar counts are reported in the Torsion and Rings columns. '-' means no outliers of that kind were identified.

Mol	Type	Chain	Res	Link	Chirals	Torsions	Rings
4	STU	A	601	-	-	0/4/42/42	0/0/8/8
5	HU7	A	602	-	-	0/18/42/42	0/4/4/4
7	AMP	C	401	-	-	0/6/26/26	0/3/3/3
7	AMP	C	402	-	-	0/6/26/26	0/3/3/3
8	ADP	C	403	-	-	0/12/32/32	0/3/3/3
9	SO4	C	404	-	-	0/0/0/0	0/0/0/0

The worst 5 of 13 bond length outliers are listed below:

Mol	Chain	Res	Type	Atoms	Z	Observed(Å)	Ideal(Å)
4	A	601	STU	C9-C10	-5.37	1.46	1.50
5	A	602	HU7	C16-C11	2.43	1.44	1.42
4	A	601	STU	O5-C8	2.72	1.28	1.23
4	A	601	STU	C6-C19	3.02	1.46	1.42
4	A	601	STU	C19-C18	3.15	1.49	1.42

The worst 5 of 15 bond angle outliers are listed below:

Mol	Chain	Res	Type	Atoms	Z	Observed(°)	Ideal(°)
4	A	601	STU	O5-C8-C7	-4.41	124.08	129.32
4	A	601	STU	C9-N1-C8	-4.40	109.04	113.78
4	A	601	STU	C1-C20-C5	-2.77	116.73	120.73
5	A	602	HU7	N2-C3-N1	-2.53	115.50	116.86
4	A	601	STU	C3-C4-C5	-2.47	116.58	120.83

There are no chirality outliers.

There are no torsion outliers.

There are no ring outliers.

2 monomers are involved in 8 short contacts:

Mol	Chain	Res	Type	Clashes	Symm-Clashes
4	A	601	STU	6	0
7	C	402	AMP	2	0

5.7 Other polymers [i](#)

There are no such residues in this entry.

5.8 Polymer linkage issues [i](#)

There are no chain breaks in this entry.

6 Fit of model and data [i](#)

6.1 Protein, DNA and RNA chains [i](#)

In the following table, the column labelled ‘#RSRZ > 2’ contains the number (and percentage) of RSRZ outliers, followed by percent RSRZ outliers for the chain as percentile scores relative to all X-ray entries and entries of similar resolution. The OWAB column contains the minimum, median, 95th percentile and maximum values of the occupancy-weighted average B-factor per residue. The column labelled ‘Q < 0.9’ lists the number of (and percentage) of residues with an average occupancy less than 0.9.

Mol	Chain	Analysed	<RSRZ>	#RSRZ>2	OWAB(Å ²)	Q<0.9
1	A	365/503 (72%)	0.68	17 (4%) 31 29	45, 73, 154, 175	0
2	B	160/204 (78%)	0.68	5 (3%) 49 48	53, 88, 125, 141	0
3	C	283/330 (85%)	0.69	26 (9%) 9 9	72, 128, 183, 193	0
All	All	808/1037 (77%)	0.68	48 (5%) 22 21	45, 92, 176, 193	0

The worst 5 of 48 RSRZ outliers are listed below:

Mol	Chain	Res	Type	RSRZ
1	A	422	TYR	4.4
3	C	300	VAL	4.3
3	C	318	LEU	4.1
3	C	278	CYS	3.7
3	C	166	LEU	3.3

6.2 Non-standard residues in protein, DNA, RNA chains [i](#)

In the following table, the Atoms column lists the number of modelled atoms in the group and the number defined in the chemical component dictionary. The B-factors column lists the minimum, median, 95th percentile and maximum values of B factors of atoms in the group. The column labelled ‘Q < 0.9’ lists the number of atoms with occupancy less than 0.9.

Mol	Type	Chain	Res	Atoms	RSCC	RSR	B-factors(Å ²)	Q<0.9
2	SEP	B	108	10/11	0.87	0.21	73,78,83,84	0
1	TPO	A	172	11/12	0.95	0.23	75,78,80,81	0

6.3 Carbohydrates [i](#)

There are no carbohydrates in this entry.

6.4 Ligands [i](#)

In the following table, the Atoms column lists the number of modelled atoms in the group and the number defined in the chemical component dictionary. The B-factors column lists the minimum, median, 95th percentile and maximum values of B factors of atoms in the group. The column labelled 'Q< 0.9' lists the number of atoms with occupancy less than 0.9.

Mol	Type	Chain	Res	Atoms	RSCC	RSR	B-factors(Å ²)	Q<0.9
6	CL	A	606	1/1	0.40	0.17	113,113,113,113	0
7	AMP	C	402	23/23	0.78	0.38	169,180,196,198	0
6	CL	A	605	1/1	0.87	0.24	88,88,88,88	0
8	ADP	C	403	27/27	0.89	0.48	165,175,187,190	0
6	CL	A	603	1/1	0.90	0.27	61,61,61,61	0
7	AMP	C	401	23/23	0.91	0.25	143,162,168,173	0
5	HU7	A	602	36/36	0.93	0.31	53,70,102,103	0
9	SO4	C	404	5/5	0.94	0.20	157,158,158,158	0
6	CL	A	604	1/1	0.97	0.20	54,54,54,54	0
4	STU	A	601	35/35	0.97	0.40	49,51,55,57	0

6.5 Other polymers [i](#)

There are no such residues in this entry.