



# Full wwPDB X-ray Structure Validation Report ⓘ

Mar 9, 2018 – 12:12 am GMT

PDB ID : 2E6Y  
Title : Covalent complex of orotidine 5'-monophosphate decarboxylase (ODCase) with 6-Iodo-UMP  
Authors : Fujihashi, M.; Bello, A.M.; Kotra, L.P.; Pai, E.F.  
Deposited on : 2007-01-05  
Resolution : 1.60 Å(reported)

This is a Full wwPDB X-ray Structure Validation Report for a publicly released PDB entry.

We welcome your comments at [validation@mail.wwpdb.org](mailto:validation@mail.wwpdb.org)

A user guide is available at

<https://www.wwpdb.org/validation/2017/XrayValidationReportHelp>

with specific help available everywhere you see the ⓘ symbol.

---

The following versions of software and data (see [references ⓘ](#)) were used in the production of this report:

MolProbity : 4.02b-467  
Mogul : 1.7.3 (157068), CSD as539be (2018)  
Xtriage (Phenix) : 1.13  
EDS : trunk30967  
Percentile statistics : 20171227.v01 (using entries in the PDB archive December 27th 2017)  
Refmac : 5.8.0158  
CCP4 : 7.0 (Gargrove)  
Ideal geometry (proteins) : Engh & Huber (2001)  
Ideal geometry (DNA, RNA) : Parkinson et al. (1996)  
Validation Pipeline (wwPDB-VP) : trunk30967

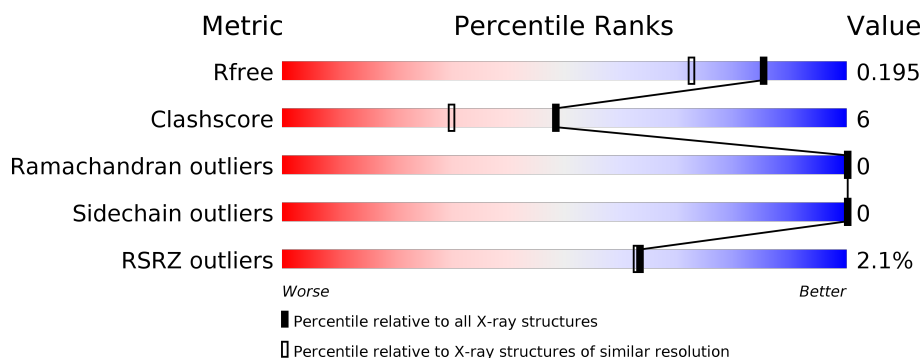
# 1 Overall quality at a glance

The following experimental techniques were used to determine the structure:

*X-RAY DIFFRACTION*

The reported resolution of this entry is 1.60 Å.

Percentile scores (ranging between 0-100) for global validation metrics of the entry are shown in the following graphic. The table shows the number of entries on which the scores are based.



Metric	Whole archive (#Entries)	Similar resolution (#Entries, resolution range(Å))
$R_{free}$	111664	2957 (1.60-1.60)
Clashscore	122126	3202 (1.60-1.60)
Ramachandran outliers	120053	3117 (1.60-1.60)
Sidechain outliers	120020	3116 (1.60-1.60)
RSRZ outliers	108989	2883 (1.60-1.60)

The table below summarises the geometric issues observed across the polymeric chains and their fit to the electron density. The red, orange, yellow and green segments on the lower bar indicate the fraction of residues that contain outliers for  $\geq 3$ , 2, 1 and 0 types of geometric quality criteria. A grey segment represents the fraction of residues that are not modelled. The numeric value for each fraction is indicated below the corresponding segment, with a dot representing fractions  $\leq 5\%$ . The upper red bar (where present) indicates the fraction of residues that have poor fit to the electron density. The numeric value is given above the bar.

Mol	Chain	Length	Quality of chain
1	A	252	<div> <div>2%</div> <div> <div></div> <div>79%</div> <div>6%</div> <div>15%</div> </div> </div>
1	B	252	<div> <div>2%</div> <div> <div></div> <div>79%</div> <div>6%</div> <div>15%</div> </div> </div>

## 2 Entry composition

There are 4 unique types of molecules in this entry. The entry contains 3758 atoms, of which 0 are hydrogens and 0 are deuteriums.

In the tables below, the ZeroOcc column contains the number of atoms modelled with zero occupancy, the AltConf column contains the number of residues with at least one atom in alternate conformation and the Trace column contains the number of residues modelled with at most 2 atoms.

- Molecule 1 is a protein called Orotidine 5'-phosphate decarboxylase.

Mol	Chain	Residues	Atoms					ZeroOcc	AltConf	Trace
1	A	215	Total	C	N	O	S	0	18	0
			1707	1071	300	325	11			
1	B	215	Total	C	N	O	S	0	15	0
			1696	1066	298	321	11			

There are 54 discrepancies between the modelled and reference sequences:

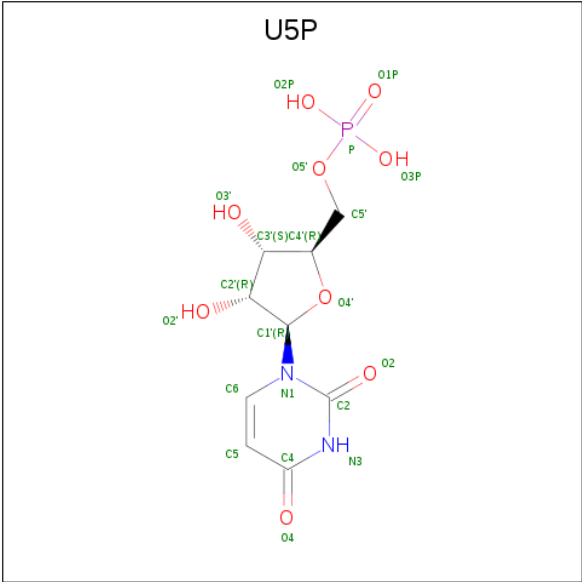
Chain	Residue	Modelled	Actual	Comment	Reference
A	-2	GLY	-	CLONING ARTIFACT	UNP O26232
A	-1	SER	-	CLONING ARTIFACT	UNP O26232
A	0	HIS	-	CLONING ARTIFACT	UNP O26232
A	101	PRO	ARG	SEE REMARK 999	UNP O26232
A	226	ARG	LEU	ENGINEERED	UNP O26232
A	227	ILE	ASN	ENGINEERED	UNP O26232
A	229	GLU	-	CLONING ARTIFACT	UNP O26232
A	230	ASP	-	CLONING ARTIFACT	UNP O26232
A	231	PRO	-	CLONING ARTIFACT	UNP O26232
A	232	ALA	-	CLONING ARTIFACT	UNP O26232
A	233	ALA	-	CLONING ARTIFACT	UNP O26232
A	234	ASN	-	CLONING ARTIFACT	UNP O26232
A	235	LYS	-	CLONING ARTIFACT	UNP O26232
A	236	ALA	-	CLONING ARTIFACT	UNP O26232
A	237	ARG	-	CLONING ARTIFACT	UNP O26232
A	238	LYS	-	CLONING ARTIFACT	UNP O26232
A	239	GLU	-	CLONING ARTIFACT	UNP O26232
A	240	ALA	-	CLONING ARTIFACT	UNP O26232
A	241	GLU	-	CLONING ARTIFACT	UNP O26232
A	242	LEU	-	CLONING ARTIFACT	UNP O26232
A	243	ALA	-	CLONING ARTIFACT	UNP O26232
A	244	ALA	-	CLONING ARTIFACT	UNP O26232
A	245	ALA	-	CLONING ARTIFACT	UNP O26232
A	246	THR	-	CLONING ARTIFACT	UNP O26232
A	247	ALA	-	CLONING ARTIFACT	UNP O26232

*Continued on next page...*

*Continued from previous page...*

Chain	Residue	Modelled	Actual	Comment	Reference
A	248	GLU	-	CLONING ARTIFACT	UNP O26232
A	249	GLN	-	CLONING ARTIFACT	UNP O26232
B	998	GLY	-	CLONING ARTIFACT	UNP O26232
B	999	SER	-	CLONING ARTIFACT	UNP O26232
B	1000	HIS	-	CLONING ARTIFACT	UNP O26232
B	1101	PRO	ARG	SEE REMARK 999	UNP O26232
B	1226	ARG	LEU	ENGINEERED	UNP O26232
B	1227	ILE	ASN	ENGINEERED	UNP O26232
B	1229	GLU	-	CLONING ARTIFACT	UNP O26232
B	1230	ASP	-	CLONING ARTIFACT	UNP O26232
B	1231	PRO	-	CLONING ARTIFACT	UNP O26232
B	1232	ALA	-	CLONING ARTIFACT	UNP O26232
B	1233	ALA	-	CLONING ARTIFACT	UNP O26232
B	1234	ASN	-	CLONING ARTIFACT	UNP O26232
B	1235	LYS	-	CLONING ARTIFACT	UNP O26232
B	1236	ALA	-	CLONING ARTIFACT	UNP O26232
B	1237	ARG	-	CLONING ARTIFACT	UNP O26232
B	1238	LYS	-	CLONING ARTIFACT	UNP O26232
B	1239	GLU	-	CLONING ARTIFACT	UNP O26232
B	1240	ALA	-	CLONING ARTIFACT	UNP O26232
B	1241	GLU	-	CLONING ARTIFACT	UNP O26232
B	1242	LEU	-	CLONING ARTIFACT	UNP O26232
B	1243	ALA	-	CLONING ARTIFACT	UNP O26232
B	1244	ALA	-	CLONING ARTIFACT	UNP O26232
B	1245	ALA	-	CLONING ARTIFACT	UNP O26232
B	1246	THR	-	CLONING ARTIFACT	UNP O26232
B	1247	ALA	-	CLONING ARTIFACT	UNP O26232
B	1248	GLU	-	CLONING ARTIFACT	UNP O26232
B	1249	GLN	-	CLONING ARTIFACT	UNP O26232

- Molecule 2 is URIDINE-5'-MONOPHOSPHATE (three-letter code: U5P) (formula:  $C_9H_{13}N_2O_9P$ ).



Mol	Chain	Residues	Atoms					ZeroOcc	AltConf
2	A	1	Total	C	N	O	P	0	0
			21	9	2	9	1		
2	B	1	Total	C	N	O	P	0	0
			21	9	2	9	1		

- Molecule 3 is GLYCEROL (three-letter code: GOL) (formula: C<sub>3</sub>H<sub>8</sub>O<sub>3</sub>).



Mol	Chain	Residues	Atoms			ZeroOcc	AltConf
3	A	1	Total	C	O	0	0
			6	3	3		
3	A	1	Total	C	O	0	0
			6	3	3		

Continued on next page...

*Continued from previous page...*

Mol	Chain	Residues	Atoms			ZeroOcc	AltConf
3	A	1	Total	C	O	0	0
			6	3	3		
3	B	1	Total	C	O	0	0
			6	3	3		

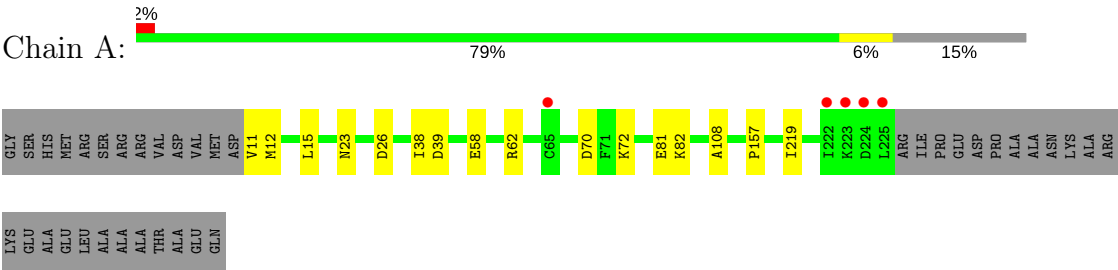
- Molecule 4 is water.

Mol	Chain	Residues	Atoms		ZeroOcc	AltConf
4	A	141	Total	O	0	0
			141	141		
4	B	148	Total	O	0	0
			148	148		

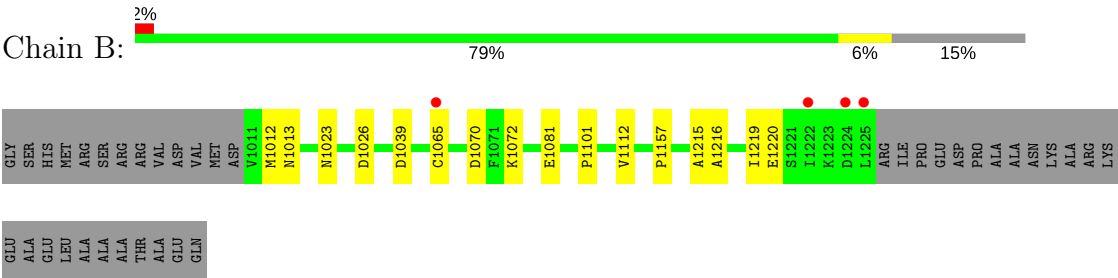
### 3 Residue-property plots i

These plots are drawn for all protein, RNA and DNA chains in the entry. The first graphic for a chain summarises the proportions of the various outlier classes displayed in the second graphic. The second graphic shows the sequence view annotated by issues in geometry and electron density. Residues are color-coded according to the number of geometric quality criteria for which they contain at least one outlier: green = 0, yellow = 1, orange = 2 and red = 3 or more. A red dot above a residue indicates a poor fit to the electron density ( $RSRZ > 2$ ). Stretches of 2 or more consecutive residues without any outlier are shown as a green connector. Residues present in the sample, but not in the model, are shown in grey.

- Molecule 1: Orotidine 5'-phosphate decarboxylase



- Molecule 1: Orotidine 5'-phosphate decarboxylase



## 4 Data and refinement statistics

Property	Value	Source
Space group	P 1 21 1	Depositor
Cell constants a, b, c, $\alpha$ , $\beta$ , $\gamma$	58.16Å 74.06Å 59.24Å 90.00° 119.39° 90.00°	Depositor
Resolution (Å)	23.97 – 1.60 23.97 – 1.60	Depositor EDS
% Data completeness (in resolution range)	99.8 (23.97-1.60) 99.9 (23.97-1.60)	Depositor EDS
$R_{merge}$	0.05	Depositor
$R_{sym}$	(Not available)	Depositor
$\langle I/\sigma(I) \rangle$ <sup>1</sup>	5.16 (at 1.60Å)	Xtriage
Refinement program	CNS 1.1	Depositor
R, $R_{free}$	0.162 , 0.187 0.174 , 0.195	Depositor DCC
$R_{free}$ test set	2839 reflections (4.92%)	wwPDB-VP
Wilson B-factor (Å <sup>2</sup> )	12.6	Xtriage
Anisotropy	0.359	Xtriage
Bulk solvent $k_{sol}$ (e/Å <sup>3</sup> ), $B_{sol}$ (Å <sup>2</sup> )	0.40 , 34.2	EDS
L-test for twinning <sup>2</sup>	$\langle  L  \rangle = 0.50$ , $\langle L^2 \rangle = 0.34$	Xtriage
Estimated twinning fraction	0.011 for -h-l,k,h 0.011 for l,k,-h-l 0.488 for h,-k,-h-l 0.012 for -h-l,-k,l 0.012 for l,-k,h	Xtriage
$F_o, F_c$ correlation	0.97	EDS
Total number of atoms	3758	wwPDB-VP
Average B, all atoms (Å <sup>2</sup> )	16.0	wwPDB-VP

Xtriage's analysis on translational NCS is as follows: *The largest off-origin peak in the Patterson function is 6.49% of the height of the origin peak. No significant pseudotranslation is detected.*

<sup>1</sup>Intensities estimated from amplitudes.

<sup>2</sup>Theoretical values of  $\langle |L| \rangle$ ,  $\langle L^2 \rangle$  for acentric reflections are 0.5, 0.333 respectively for untwinned datasets, and 0.375, 0.2 for perfectly twinned datasets.



## 5 Model quality [i](#)

### 5.1 Standard geometry [i](#)

Bond lengths and bond angles in the following residue types are not validated in this section: GOL, U5P

The Z score for a bond length (or angle) is the number of standard deviations the observed value is removed from the expected value. A bond length (or angle) with  $|Z| > 5$  is considered an outlier worth inspection. RMSZ is the root-mean-square of all Z scores of the bond lengths (or angles).

Mol	Chain	Bond lengths		Bond angles	
		RMSZ	$\# Z  > 5$	RMSZ	$\# Z  > 5$
1	A	0.58	0/1802	0.76	1/2432 (0.0%)
1	B	0.59	0/1779	0.74	1/2400 (0.0%)
All	All	0.59	0/3581	0.75	2/4832 (0.0%)

There are no bond length outliers.

All (2) bond angle outliers are listed below:

Mol	Chain	Res	Type	Atoms	Z	Observed(°)	Ideal(°)
1	B	1157	PRO	N-CA-C	5.12	125.40	112.10
1	A	157	PRO	N-CA-C	5.03	125.17	112.10

There are no chirality outliers.

There are no planarity outliers.

### 5.2 Too-close contacts [i](#)

In the following table, the Non-H and H(model) columns list the number of non-hydrogen atoms and hydrogen atoms in the chain respectively. The H(added) column lists the number of hydrogen atoms added and optimized by MolProbity. The Clashes column lists the number of clashes within the asymmetric unit, whereas Symm-Clashes lists symmetry related clashes.

Mol	Chain	Non-H	H(model)	H(added)	Clashes	Symm-Clashes
1	A	1707	0	1656	22	0
1	B	1696	0	1666	23	0
2	A	21	0	10	0	0
2	B	21	0	10	1	0
3	A	18	0	24	0	0
3	B	6	0	8	0	0
4	A	141	0	0	1	0

*Continued on next page...*

*Continued from previous page...*

Mol	Chain	Non-H	H(model)	H(added)	Clashes	Symm-Clashes
4	B	148	0	0	1	0
All	All	3758	0	3374	45	0

The all-atom clashscore is defined as the number of clashes found per 1000 atoms (including hydrogen atoms). The all-atom clashscore for this structure is 6.

All (45) close contacts within the same asymmetric unit are listed below, sorted by their clash magnitude.

Atom-1	Atom-2	Interatomic distance (Å)	Clash overlap (Å)
1:A:23[B]:ASN:HD21	1:A:26:ASP:CB	1.68	1.07
1:B:1023[B]:ASN:HD21	1:B:1026:ASP:N	1.53	1.05
1:A:23[B]:ASN:ND2	1:A:26:ASP:HB2	1.73	1.02
1:B:1023[B]:ASN:ND2	1:B:1026:ASP:H	1.60	0.99
1:B:1013:ASN:HB3	1:B:1219:ILE:HD12	1.50	0.94
1:B:1023[B]:ASN:ND2	1:B:1026:ASP:HB2	1.82	0.93
1:B:1023[B]:ASN:HD21	1:B:1026:ASP:H	0.93	0.91
1:B:1023[B]:ASN:ND2	1:B:1026:ASP:CB	2.36	0.89
1:A:23[B]:ASN:HD21	1:A:26:ASP:HB2	1.33	0.88
1:A:23[B]:ASN:ND2	1:A:26:ASP:CB	2.35	0.85
1:B:1023[B]:ASN:HD21	1:B:1026:ASP:CB	1.91	0.82
1:B:1012:MET:H	1:B:1039[A]:ASP:CG	1.84	0.78
1:B:1023[B]:ASN:HD21	1:B:1026:ASP:CA	1.98	0.76
1:B:1023[B]:ASN:HD22	1:B:1026:ASP:HB2	1.51	0.71
1:A:12:MET:H	1:A:39[A]:ASP:CG	1.98	0.66
1:A:23[B]:ASN:HD21	1:A:26:ASP:CG	1.99	0.66
1:A:82[A]:LYS:HE2	4:A:771:HOH:O	1.96	0.66
1:A:23[B]:ASN:HD21	1:A:26:ASP:H	1.47	0.62
1:B:1013:ASN:HB3	1:B:1219:ILE:CD1	2.29	0.61
1:A:23[B]:ASN:ND2	1:A:26:ASP:CG	2.54	0.60
1:A:23[B]:ASN:ND2	1:A:26:ASP:H	2.02	0.58
1:B:1216:ALA:O	1:B:1220:GLU:HG2	2.05	0.56
1:A:23[B]:ASN:HD22	1:A:26:ASP:HB2	1.66	0.56
1:A:23[B]:ASN:HD21	1:A:26:ASP:N	2.02	0.56
1:A:23[B]:ASN:HD21	1:A:26:ASP:CA	2.19	0.54
1:B:1023[B]:ASN:ND2	1:B:1026:ASP:N	2.32	0.53
1:B:1013:ASN:CB	1:B:1219:ILE:HD12	2.33	0.53
1:B:1012:MET:N	1:B:1039[A]:ASP:OD1	2.39	0.53
1:B:1023[B]:ASN:ND2	1:B:1026:ASP:CG	2.63	0.52
1:A:11:VAL:HG13	1:A:39[A]:ASP:OD1	2.10	0.51
1:A:12:MET:N	1:A:39[A]:ASP:OD1	2.40	0.47
1:A:58:GLU:O	1:A:62:ARG:HB2	2.15	0.47

*Continued on next page...*

*Continued from previous page...*

Atom-1	Atom-2	Interatomic distance (Å)	Clash overlap (Å)
1:B:1215:ALA:O	1:B:1219:ILE:HG12	2.16	0.46
1:B:1039[B]:ASP:O	1:B:1065:CYS:HB2	2.15	0.45
1:A:81:GLU:HG3	1:A:108:ALA:HB1	1.99	0.44
1:B:1072:LYS:HE2	2:B:302:U5P:H5	1.80	0.43
1:A:70:ASP:OD1	1:A:72:LYS:HE3	2.18	0.43
1:B:1081:GLU:HG3	1:B:1112:VAL:CG2	2.48	0.43
1:A:15:LEU:O	1:A:38[B]:ILE:HG23	2.17	0.43
1:B:1023[B]:ASN:ND2	1:B:1023[B]:ASN:O	2.52	0.43
1:B:1070:ASP:OD1	1:B:1072:LYS:HE3	2.19	0.43
1:A:23[B]:ASN:ND2	1:A:26:ASP:OD2	2.54	0.41
1:B:1101[A]:PRO:HD2	4:B:617:HOH:O	2.21	0.41

There are no symmetry-related clashes.

## 5.3 Torsion angles [i](#)

### 5.3.1 Protein backbone [i](#)

In the following table, the Percentiles column shows the percent Ramachandran outliers of the chain as a percentile score with respect to all X-ray entries followed by that with respect to entries of similar resolution.

The Analysed column shows the number of residues for which the backbone conformation was analysed, and the total number of residues.

Mol	Chain	Analysed	Favoured	Allowed	Outliers	Percentiles	
1	A	231/252 (92%)	223 (96%)	8 (4%)	0	100	100
1	B	228/252 (90%)	222 (97%)	6 (3%)	0	100	100
All	All	459/504 (91%)	445 (97%)	14 (3%)	0	100	100

There are no Ramachandran outliers to report.

### 5.3.2 Protein sidechains [i](#)

In the following table, the Percentiles column shows the percent sidechain outliers of the chain as a percentile score with respect to all X-ray entries followed by that with respect to entries of similar resolution.

The Analysed column shows the number of residues for which the sidechain conformation was analysed, and the total number of residues.

Mol	Chain	Analysed	Rotameric	Outliers	Percentiles	
1	A	185/197 (94%)	185 (100%)	0	100	100
1	B	182/197 (92%)	182 (100%)	0	100	100
All	All	367/394 (93%)	367 (100%)	0	100	100

There are no protein residues with a non-rotameric sidechain to report.

Some sidechains can be flipped to improve hydrogen bonding and reduce clashes. All (1) such sidechains are listed below:

Mol	Chain	Res	Type
1	B	1173	GLN

### 5.3.3 RNA ⓘ

There are no RNA molecules in this entry.

## 5.4 Non-standard residues in protein, DNA, RNA chains ⓘ

There are no non-standard protein/DNA/RNA residues in this entry.

## 5.5 Carbohydrates ⓘ

There are no carbohydrates in this entry.

## 5.6 Ligand geometry ⓘ

6 ligands are modelled in this entry.

In the following table, the Counts columns list the number of bonds (or angles) for which Mogul statistics could be retrieved, the number of bonds (or angles) that are observed in the model and the number of bonds (or angles) that are defined in the Chemical Component Dictionary. The Link column lists molecule types, if any, to which the group is linked. The Z score for a bond length (or angle) is the number of standard deviations the observed value is removed from the expected value. A bond length (or angle) with  $|Z| > 2$  is considered an outlier worth inspection. RMSZ is the root-mean-square of all Z scores of the bond lengths (or angles).

Mol	Type	Chain	Res	Link	Bond lengths			Bond angles		
					Counts	RMSZ	$\# Z  > 2$	Counts	RMSZ	$\# Z  > 2$
2	U5P	A	301	1	17,22,22	2.45	3 (17%)	21,33,33	3.43	2 (9%)
3	GOL	A	311	-	5,5,5	0.37	0	5,5,5	0.63	0
3	GOL	A	312	-	5,5,5	0.32	0	5,5,5	0.72	0

Mol	Type	Chain	Res	Link	Bond lengths			Bond angles		
					Counts	RMSZ	# Z  > 2	Counts	RMSZ	# Z  > 2
3	GOL	A	314	-	5,5,5	0.65	0	5,5,5	0.47	0
2	U5P	B	302	1	17,22,22	1.73	3 (17%)	21,33,33	3.47	3 (14%)
3	GOL	B	313	-	5,5,5	0.35	0	5,5,5	0.63	0

In the following table, the Chirals column lists the number of chiral outliers, the number of chiral centers analysed, the number of these observed in the model and the number defined in the Chemical Component Dictionary. Similar counts are reported in the Torsion and Rings columns. '-' means no outliers of that kind were identified.

Mol	Type	Chain	Res	Link	Chirals	Torsions	Rings
2	U5P	A	301	1	-	0/6/26/26	0/2/2/2
3	GOL	A	311	-	-	0/4/4/4	0/0/0/0
3	GOL	A	312	-	-	0/4/4/4	0/0/0/0
3	GOL	A	314	-	-	0/4/4/4	0/0/0/0
2	U5P	B	302	1	-	0/6/26/26	0/2/2/2
3	GOL	B	313	-	-	0/4/4/4	0/0/0/0

All (6) bond length outliers are listed below:

Mol	Chain	Res	Type	Atoms	Z	Observed(Å)	Ideal(Å)
2	B	302	U5P	O4'-C1'	2.92	1.45	1.41
2	A	301	U5P	O4'-C1'	3.21	1.45	1.41
2	B	302	U5P	C4-N3	3.75	1.39	1.33
2	B	302	U5P	C6-N1	4.47	1.41	1.35
2	A	301	U5P	C4-N3	5.20	1.42	1.33
2	A	301	U5P	C6-N1	7.64	1.46	1.35

All (5) bond angle outliers are listed below:

Mol	Chain	Res	Type	Atoms	Z	Observed(°)	Ideal(°)
2	A	301	U5P	C5-C4-N3	-3.27	115.57	123.17
2	B	302	U5P	C5-C4-N3	-3.22	115.69	123.17
2	B	302	U5P	C4'-O4'-C1'	2.32	112.25	109.83
2	A	301	U5P	C4-N3-C2	14.96	127.01	114.14
2	B	302	U5P	C4-N3-C2	15.10	127.14	114.14

There are no chirality outliers.

There are no torsion outliers.

There are no ring outliers.

1 monomer is involved in 1 short contact:

Mol	Chain	Res	Type	Clashes	Symm-Clashes
2	B	302	U5P	1	0

## 5.7 Other polymers [i](#)

There are no such residues in this entry.

## 5.8 Polymer linkage issues [i](#)

There are no chain breaks in this entry.

## 6 Fit of model and data [i](#)

### 6.1 Protein, DNA and RNA chains [i](#)

In the following table, the column labelled ‘#RSRZ> 2’ contains the number (and percentage) of RSRZ outliers, followed by percent RSRZ outliers for the chain as percentile scores relative to all X-ray entries and entries of similar resolution. The OWAB column contains the minimum, median, 95<sup>th</sup> percentile and maximum values of the occupancy-weighted average B-factor per residue. The column labelled ‘Q< 0.9’ lists the number of (and percentage) of residues with an average occupancy less than 0.9.

Mol	Chain	Analysed	<RSRZ>	#RSRZ>2	OWAB(Å <sup>2</sup> )	Q<0.9
1	A	215/252 (85%)	-0.64	5 (2%) 60 59	7, 12, 30, 57	0
1	B	215/252 (85%)	-0.65	4 (1%) 66 66	8, 12, 30, 54	0
All	All	430/504 (85%)	-0.65	9 (2%) 63 63	7, 12, 30, 57	0

All (9) RSRZ outliers are listed below:

Mol	Chain	Res	Type	RSRZ
1	B	1225	LEU	4.8
1	A	225	LEU	4.4
1	A	222	ILE	3.1
1	A	224	ASP	2.8
1	B	1065	CYS	2.6
1	A	65	CYS	2.5
1	B	1222	ILE	2.2
1	A	223	LYS	2.1
1	B	1224	ASP	2.0

### 6.2 Non-standard residues in protein, DNA, RNA chains [i](#)

There are no non-standard protein/DNA/RNA residues in this entry.

### 6.3 Carbohydrates [i](#)

There are no carbohydrates in this entry.

### 6.4 Ligands [i](#)

In the following table, the Atoms column lists the number of modelled atoms in the group and the number defined in the chemical component dictionary. The B-factors column lists the minimum,

median, 95<sup>th</sup> percentile and maximum values of B factors of atoms in the group. The column labelled 'Q< 0.9' lists the number of atoms with occupancy less than 0.9.

Mol	Type	Chain	Res	Atoms	RSCC	RSR	B-factors(Å <sup>2</sup> )	Q<0.9
3	GOL	A	311	6/6	0.73	0.18	33,37,40,43	0
3	GOL	A	312	6/6	0.76	0.19	32,36,39,44	0
3	GOL	B	313	6/6	0.86	0.21	23,35,37,42	0
3	GOL	A	314	6/6	0.90	0.19	21,34,37,39	0
2	U5P	B	302	21/21	0.99	0.04	7,8,9,10	0
2	U5P	A	301	21/21	0.99	0.04	6,8,9,10	0

## 6.5 Other polymers [i](#)

There are no such residues in this entry.